

# PERSONAL NAVIGATOR



Sunrise: 7:12 am Sunset: 8:11 pm  
Evening Attire: Cruise Casual

Today: Partly Sunny High: 82°F/28°C  
Tomorrow: Cloudy High: 82°F/28°C

FRIDAY, SEPTEMBER 2, 2016

DAY AT SEA

## Disney DREAMS

AN ENCHANTED CLASSIC

*In this spectacular fantasy, a little girl discovers the power of her dreams. Fly through the air with Peter Pan, your imagination, and many of your favorite Disney stories – including Disney's newest classic, Frozen! With a little Faith, Trust and Pixie Dust, you'll see that dreams really can come true!*

WALT DISNEY THEATRE

Deck 4, Forward

6:30 pm & 8:45 pm

As a courtesy to all Guests, we kindly advise that the saving of seats is **not** permitted in the Walt Disney Theatre.



Assistance available at the entrance to the Walt Disney Theatre 30 minutes prior to show time.

## Disney MAGIC Fun Facts

Most cruise ships of this size usually have 10 to 12 different carpet styles or patterns; However, the Disney Magic® has well over 100 different custom themed carpets.

There are over 27,000 signs, plaques and marquees. That's more than double the number used in all of Disney's Animal Kingdom Theme Park.

The Disney Magic's® sister ship the Disney Wonder® is Art Nouveaux in style but the Disney Magic® is Art Deco. This style of decoration and architecture is from the late 19th and early 20th centuries, was the springboard for Art Deco. Art Nouveaux has a more organic flowing, almost sinuous use of lines that often depict flowers and leaves.

As you walk up the stairs between stateroom decks 6, 7 & 8 you will notice a progression on the Magic from rough animation to finished animation.

### 'TIL WE MEET AGAIN

#### FAREWELL SHOW

The world-famous Disney Characters and some of your new friends from the Walt Disney Theatre stage shows bid you a charming farewell.

Lobby Atrium,  
Deck 3, Midship,  
10:15 pm

## Don't Miss:

#### Good Morning Disney Magic

Tune in to channel 24-2 as your Cruise Director highlights the upcoming events and activities for the day.

#### Captain's Signing

*White Caps, Deck 4, Forward - 12:15 pm*

Meet the Master of the Disney Magic and have your cruise memories signed.

#### Family Variety: Stringfever

*Walt Disney Theatre, Deck 4, Forward - 1:45 pm*

Featuring the Unique String Quartet Stylings of Stringfever, as they entertain the entire family in this fun-filled show.

#### Fun Time with JunNk

*Fathoms, Deck 3, Forward - 7:45 pm*

Join the members of JunNk for some drumming songs, games and laughs in this fun family event.

#### 80's Flashback (18+)

*Fathoms, Deck 3, Forward - 10:15 pm*

The 80's are back! Join your Cruise Staff team, in testing your 80's knowledge in this high energy 80's revival.

#### Debark Talk Broadcast

Important information regarding disembarkation procedures for your journey home will be covered in this debarkation briefing. The broadcast will be shown continuously on channel 24-2 of your stateroom television for your convenience.

Thank you in advance for completing your comment card.

## DINNER MENU

Animator's Palate: 'Til We Meet Again  
Carioca's: 'Til We Meet Again  
Lumiere's: 'Til We Meet Again

## DRINK OF THE DAY

Yellow Bird (Alcoholic)  
Coco Bali (Non-Alcoholic)

## IMPORTANT NUMBERS

Fire/Security: 7-3001  
Medical Emergency: 7-3000  
Health Center: 7-1923



# ADULT ACTIVITY HIGHLIGHTS

## SENSES SPA FITNESS CLASSES & SEMINARS



*Sunrise Stretch* - Senses Spa Fitness Center - 7:00 am  
*Fab Abs* - Senses Spa Fitness Center - 7:30 am  
*Body Sculpt Boot Camp* (Nom. Fee) - Senses Spa Fitness Center - 8:00 am  
*Group Cycling* (Sign-Up Required) - Senses Spa Fitness Center - 9:00 am  
*Secrets to a Flatter Stomach* - Senses Spa & Salon - 11:00 am  
*Yoga* (Sign-Up Required) - Senses Spa Fitness Center - 3:00 pm  
*Complimentary Footprint Analysis* - Senses Spa & Salon - 5:00 pm

## TASTING CLASSES

*Stem to Stern Wine Tasting* (18+) - Keys - 12:15 pm  
*Tequila & Margarita Tasting* (18+) - Keys - 2:00 pm  
*Mojito & Caipirinha Tasting* (18+) - Keys - 4:00 pm  
 Please make reservations for tastings at Guest Services for a nominal fee.  
 Tasting Seminars are only for Guests 18 and older.

### 1820 SOCIETY: LUNCH

*Lumiere's, Deck 3, Midship - 12:00 pm*  
 Get to know your fellow Society members over lunch.



### 1820 SOCIETY: SMOOTHIE TIME

*Promenade Lounge, Deck 3, Aft - 5:15 pm*  
 Join us for some smoothies.

### 1820 SOCIETY: FAREWELL

*O'Gills Pub, Deck 3, Forward - 10:00 pm*  
 Join your Cruise Staff and your new friends in this last gathering for some fun.

### ANYONE CAN COOK: APPLE STRUDEL

*D Lounge, Deck 4, Midship - 10:30 am*  
 From our galley to yours. Join our chefs as they show you how to prepare delicious dishes. Today's Menu - Apple Strudel.



### NAPKIN FOLDING

*D Lounge, Deck 4, Midship - 11:15 am*  
 Learn how to fold a napkin to impress your guests at your next dinner party.



### DISNEY INNOVATIONS: THEME PARKS

*O'Gills Pub, Deck 3, Forward - 1:45 pm*  
 Join us for our presentation showing the "Top 10" greatest innovations that the Walt Disney Company has introduced to theme parks.

### 90'S MUSIC TRIVIA

*O'Gills Pub, Deck 3, Forward - 7:45 pm*  
 "If you Wannabe" the winner, then join us as we test your 90's music knowledge.



### 80'S FLASHBACK

*Fathoms, Deck 3, Forward - 10:15 pm*  
 The 80's are back! Join your Cruise Staff team, in testing your 80's knowledge in this high energy 80's revival.



# FUN FOR ALL AGES HIGHLIGHTS



### GOOD MORNING DISNEY MAGIC

Tune in to channel 24-2 as your Cruise Director highlights the upcoming events and activities for the day.

### FAMILY MOVIE FUN TIME: ALICE THROUGH THE LOOKING GLASS - (PG)



*Buena Vista Theatre, Deck 5, Aft - 8:15 am*

Come join us for a special opportunity to enjoy Alice Through the Looking Glass in the Buena Vista Theatre. We will leave some lights on and turn the volume down as audience members are welcome to talk, leave their seats, move about and (most importantly) have fun!

### \$10,000 MEGA JACKPOT BINGO

*Bingo Pre-Sales start at 11:00 am*

*Fathoms, Deck 3, Forward - 11:15 am*

It's Big, it's Massive, it's Supersized! It's \$10,000 MEGA Jackpot Bingo! Take home \$10,000 if you can cover your card in 46 numbers or less. If not, we carry on to play for the biggest cash prize of the session. Pre-Sales start 15 minutes prior to game.



### DISNEY MOVIE CHALLENGE POOLSIDE

*Deck 9 Stage, Deck 9, Midship - 12:15 pm*

So you like movies? And you like bingo? This deck party has them both! Come on out to watch all your favorite movie clips and just maybe your team will win the opportunity to choose the movie played by the pool today!



### TOWEL FOLDING

*D Lounge, Deck 4, Midship - 2:00 pm*

Learn to create those amazing towel creatures you've seen in your stateroom all cruise long.

### FINAL JACKPOT BINGO

*Bingo Pre-Sales start at 3:00 pm*

*Fathoms, Deck 3, Forward - 3:30 pm*

The snowball jackpot MUST BE WON at this final session! Beat the line and get your cards early. Who will be the lucky winner? It could be you! Pre-Sales start 30 minutes prior to game.



### FRIENDSHIP ROCKS

*Walt Disney Theatre, Deck 4, Forward - 5:00 pm*

Come and celebrate with all the children from the Oceaneer Club and Oceaneer Lab in the Jammin' performance of Friendship Rocks! You won't want to miss any of the fun.



### JEWISH SABBATH

*Keys, Deck 3, Forward - 5:15 pm*

A quiet space is reserved for those wishing to conduct their own service.

### FAMILY TALENT SHOW

*D Lounge, Deck 4, Midship - 7:45 pm*

Your fellow Guests have rehearsed and are ready to show off their talents. A rehearsal time for those registered for our show will take place today at 3:00 pm in D Lounge, Deck 4, Midship.



### FAREWELL KARAOKE

*D Lounge, Deck 4, Midship - 10:45 pm*

Bring along the entire family for one more round of karaoke. This is your last opportunity to grab the mic and sing along to your favorite song.





# YOUTH ACTIVITIES HIGHLIGHTS

## DINE & PLAY

As a convenience for families dining at 8:45 p.m., our Youth Activities Counselors will be available at 9:45 p.m. at the entrance of Lumiere's, Carioca's and Animator's Palate to bring registered children to join the fun in Disney's Oceaneer Club and Disney's Oceaneer Lab.



Deck 5, Aft (7-5864)

9:00 am - 11:00 pm

Infants and Toddlers can enjoy toys and activities at It's a small world nursery. Reservations are first come, first served so please stop by!



Deck 5, Midship (7-1439)  
(3-12 years old)

9:00 am - 12:00 am

## MARVEL AVENGERS ACADEMY

11:00 am

Young Heroes Assemble! S.H.I.E.L.D and The Avengers need your help in defeating the evil Red Skull and his dreaded Cabal.

## FRIENDSHIP ROCKS

5:00 pm

Come and celebrate with all the children from the Oceaneer Club and Lab in the jammin' performance of Friendship Rocks! You won't want to miss any of the fun.



Deck 5, Midship (7-1445)  
(3-12 years old)

9:00 am - 12:00 am

## GOOFY FILES

11:30 am

This fascinating activity takes you into the invisible world of forensics where you will discover different ways to identify the suspect of a crime.

## ANYONE CAN COOK (EN ESPAÑOL)

7:30 pm

De nuestra cocina a la tuya. Únete a nuestros chefs para que te enseñen cómo preparar deliciosos platillos.

## SUPER SLOPPY SCIENCE

10:15 pm

Join Professor Make-O-Mess in some of the most extreme experiments you will ever see in the world of Super Sloppy Science!



Deck 9, Midship (7-5816)  
(11-14 years old)

10:00 am - 12:00 am

## ANYONE CAN COOK

2:45 pm

Anyone can cook as we work together to create some of our favorite treats.

## HOW WELL DO YOU KNOW YOUR COUNSELOR?

10:00 pm

Do you think you know all there is to know about your counselors? Come test out your knowledge with all of your friends!



Deck 10, Midship (7-18517)  
(14-17 years old)

10:30 am - 1:00 am

## GOTCHA

12:00 pm

You will try to eliminate your victim by various methods collecting points throughout the day, last person standing with the most points wins.

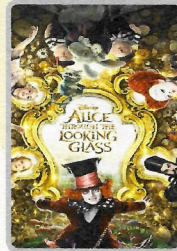
## ZOMBIFIED PREMIERE

10:30 pm

It's premiere night for the latest zombie movie starring YOU!

# BUENA VISTA THEATRE

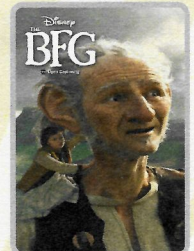
Deck 5, Aft  
Today's Movies



Family Fun Movie  
8:15 am  
Duration:  
1 hr 48 mins  
Rating: PG



**DOLBY 3D**  
10:45 am  
Duration:  
1 hr 42 mins  
Rating: PG



**OC Open Captioning**  
12:45 pm  
Duration:  
1 hr 55 mins  
Rating: PG

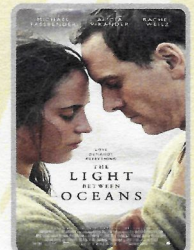


Subtítulos en Español

3:00 pm  
Duration:  
2 hrs 27 mins  
Rating: PG-13



5:45 pm & 8:00 pm  
Duration:  
1 hr 45 mins  
Rating: PG



Viewer Discretion Advised

11:00 pm  
Duration:  
2 hrs 10 mins  
Rating: PG-13



## FAMILY VARIETY ACT

Featuring the unique String Quartet stylings of Stringfever, in this fun-filled show!

Walt Disney Theatre,  
Deck 4, Forward  
1:45 pm  
(Doors open at 1:30 pm)



## VARIETY ACT

Featuring the Comedy & Rhythm of JunNk.  
Rhythm Workshop  
Fathoms,  
Deck 3, Forward  
7:45 pm

Adult Exclusive Show  
Fathoms (18+),  
Deck 3, Forward  
10:45 pm

## YOUTH ACTIVITIES OPEN HOUSE

Open House is an opportunity for all to come and participate in a variety of exciting activities and free time in the Oceaneer Club, Oceaneer Lab, it's a small world nursery, Vibe and Edge throughout the cruise. During these times secured programming will still be offered in the other venue for those looking to check their children into care.

Edge: 10:00 am - 11:00 am & 7:30 pm - 9:00 pm

Vibe: 11:00 am - 12:00 pm & 6:00 pm - 7:30 pm

Disney's Oceaneer Club: 9:00 am - 10:30 am & 6:00 pm - 7:00 pm

Disney's Oceaneer Lab: 2:00 pm - 3:30 pm



# MORE TO ENJOY WHILE ONBOARD



**BOOK YOUR NEXT DISNEY VACATION TODAY!**  
If you're thinking about booking a future Disney cruise or Adventures by Disney trip, today is your last chance to save with special offers only available onboard! Visit the Disney Vacation Planning desk, Deck 4, Midship, for more information.



**DISNEY VACATION CLUB® GROUP PREVIEW**  
Want to learn more about taking magical vacations year after year? Please see a Disney Vacation Club representative on Deck 4, Midship, or call 7-2805 from your stateroom phone for more information about our interactive group presentation.



**PORT SHOPPING INFORMATION**  
Come see Michael, your Port Shopping Guide at the Port Shopping Desk, Deck 3, Midship between 7:30 pm - 8:30 pm. Michael will help you find that once in a life time keepsake to commemorate your cruise vacation.

## Connect @ Sea

We are now offering a NEW and improved Internet service to stay connected on your cruise like no other in the industry! Internet packages range from \$0.25 per MB - \$89.00 (1000 MB package). For more information contact your Connect@Sea Expert or Guest Services onboard. Possible service interruptions due to area configuration.

## EXPRESS CHECK OUT

If you have a credit card on file, you qualify for express check out. No need to visit Guest Services to settle your account.

## EXPRESS WALK OFF

This option allows you to take your luggage off the ship at your leisure once the ship has been cleared by the local authorities. You won't need to wait for your luggage to enter the terminal and there is no need to claim it inside the terminal building. Please note that no assistance with luggage is provided for this option.



## GO SMILE TEETH WHITENING

Come and learn about our amazing onboard GO Smile teeth whitening service, where we can lift the shade of your teeth from 1-6 shades.  
Single - \$149  
Couples - \$258

Senses Spa & Salon, Deck 9, Forward, Extension 7-1465



Ask about our Barcelona Debarking Tours like the Montserrat half-day. On this tour you will ascend the towering Montserrat Mountain range via railway and tour the world famous monastery including the Shrine of Our Lady of Montserrat or "La Moreneta." Then enjoy some free time for souvenir shopping before heading to your Disney Cruise Line Hotel. Ask about availability of tours at the **Port Adventures Desk, Deck 3, Midship.**



## PANDORA

Featuring hand-finished .925 sterling silver and 14K gold charms inspired by some of Disney's most beloved characters.



WHITE CAPS | DECK 4, FORWARD

## SHOPPING

### TRAVEL COLLECTION

Find the perfect souvenir that pays homage to Walt's love of sailing with the Disney Cruise Line Travel Collection. White Caps, Deck 4, Forward.

### CAPTAIN'S SIGNING

Stop by White Caps at 12:15 pm to meet the Master of the Disney Magic and have your cruise mementos signed! Stunning replica ships are available in White Caps, Deck 4, Forward. Beautiful Disney Cruise Line prints are available in the Vista Gallery, Deck 4, Midship.

### ATLANTIS GEMS PRESENTATION

Take part in a special Atlantis Gems presentation and learn more about the imaginative creations of Morganite, Tanzanite and custom cut gems. Today at 10:30 am in O'Gills Pub, Deck 3, Forward.

### LAST CHANCE TO VISIT THE VISTA GALLERY

Don't miss your last chance to visit the Vista Gallery where you can admire beautiful artwork created by various celebrated artists and featuring some of your favorite Disney characters. From original canvas paintings to smaller print copies, the Vista Gallery offers the opportunity for you to take some of the magic home! Deck 4, Midship.

### CELEBRATE WITH THE BIBBIDI BOBBIDI BOUTIQUE!

There's always a reason to celebrate when sailing onboard the Disney Magic Cruise Ship! Join the celebration with the Bibbidi Bobbidi Boutique Celebration package that includes an exclusive Disney Cruise Line t-shirt and matching tutu. Make your reservation by visiting Bibbidi Bobbidi Boutique, Deck 10, Forward, Port Side, or dialing extension 7-1492. Limited space available.

### GUESS THE CARAT WEIGHT

Whoever guesses closest wins a fine jewelry piece from Atlantis Gems! Winner announced at 7:45 pm. Must be present to win. White Caps, Deck 4, Forward.



## FINAL DAY TO PURCHASE YOUR CRUISE MEMORIES

Today and tonight will be your last chance to purchase your digital photo packages, photo prints and Photo books. Shutters on Deck 4, Aft will be open until 11:00 pm, so don't miss out on bringing home all those cruise memories!

## IMPORTANT INFORMATION

### Security Notice

All Guests (including Children) who wish to disembark or embark the ship are required to present their Key to the World card at the gangway. A photo ID is also required for those Guests who are 18 years of age or older. Guests under the age of 18 are required to have a parent, guardian or other responsible adult sign an authorization form at the Guest Service Desk if they wish to go ashore unaccompanied or with any adult from another stateroom.

### Insect Repellent Advisory

Protect against mosquito bites and related illnesses when going ashore. Insect repellent is available for purchase in White Caps. When using both sunscreen and insect repellent, use sunscreen first and apply insect repellent on top of sunscreen.

### Cold and Flu Reminder

Please wash hands frequently and thoroughly, particularly before meals. Contact the Health Center by dialing 7-1923, should anyone in your party become ill.

### Inclement Weather

For the safety of all Guests, outdoor events may be changed due to unforeseen weather conditions.

### Corridor Quiet Hours

As a courtesy to all our Guests, please recognize quiet hallway hours from 10:00 p.m. til 8:00 a.m.

### Environmental Message

With Disney's commitment to the Environment please refrain from throwing anything over the Ship's side. Thank you.

### No Reserved Seats Policy

As a courtesy to all Guests we kindly advise that the saving of seats is not permitted in the Walt Disney Theatre, and the saving of the sun loungers is not permitted on Deck 9 and 10. Items left unattended will be returned to lost and found at Guest Services, Deck 3, Midship.

### Smoking

For the comfort of our guests, the following areas are designated as smoking areas:

- Deck 9 Forward, Port Side
- Deck 4, Starboard Side from 6:00 p.m. to 6:00 a.m. only (all of Deck 4 is non-smoking from 6:00 a.m. to 6:00 p.m.)

Smoking is prohibited inside all guest staterooms and on stateroom verandahs. Guests found smoking in their staterooms or on their verandahs will be charged a \$250 stateroom recovery fee.

### Walt Disney Theatre

Theatrical performances may use artificial fog, strobe lights, pyrotechnics and other special effects. For the safety of our performers and the comfort of those around you, the use of any photography or video recording device or any electronic equipment is prohibited.

### Verandah Safety

Please do not leave any combustible materials on your balcony when not present in your stateroom for safety reasons.