



Magic Is Here



Know Before You Go

Learn what you can expect during your next Disney cruise—and be sure to check back soon as information is frequently updated.

Last Updated on October 7, 2022

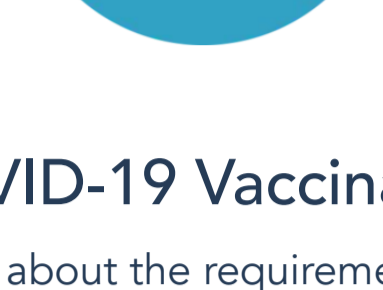
Welcome to an Unforgettable Vacation at Sea

Health and Safety Update:

Beginning October 7, 2022, for sailings departing from Florida ports, Guests are no longer required to provide proof of COVID-19 vaccination to sail. Guests who choose to provide proof of vaccination are exempt from testing requirements.

Top Things You Need to Know

Explore the most important things you need to be aware of as you prepare for your Disney Cruise Line vacation.



COVID-19 Vaccination

Learn about the requirements for COVID-19 vaccination at the time of sailing.

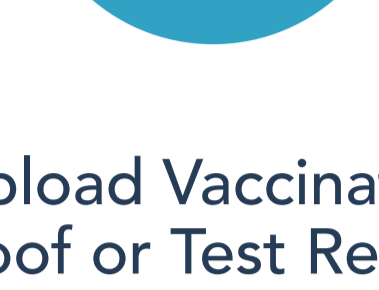
[Read Less](#)



COVID-19 Testing

Learn about the COVID-19 tests that are required for Guests.

[Read More](#)



Upload Vaccination Proof or Test Results

Order tests and upload documentation to Inspire Diagnostics Safe Passage website.

[Read More](#)

COVID-19 Vaccination

Learn about the requirements for COVID-19 vaccination at the time of sailing.

Vaccination and testing requirements differ for sailings from New York aboard the Disney Magic from September 30, 2022, through October 21, 2022. For information about sailings to Bermuda, view the "Ports of Call" section on this page. For the voyage departing from New York on October 10, 2022, please review our [Canada Sailings page](#).

Through October 13, 2022

GUESTS AGES 12 AND OLDER

- Full vaccination required
 - *Note: Guests on sailings from Florida are no longer required to be fully vaccinated or provide proof of vaccination.*
- Testing not required

GUESTS AGES 5 TO 11

- Full vaccination not required but highly recommended
- Testing for fully vaccinated Guests not required
- Testing for unvaccinated Guests required
 - *COVID-19 test taken 1 to 3 days before the sail date. The test must be a rapid or lab-based PCR test, or nucleic acid amplification test (NAAT). Rapid antigen tests will not be accepted.*

GUESTS AGES 4 AND YOUNGER

- Full vaccination not required but highly recommended
- Testing for fully vaccinated Guests not required
- Testing for unvaccinated Guests required
 - *COVID-19 test taken 1 to 3 days before the sail date. The test must be a rapid or lab-based PCR test, or nucleic acid amplification test (NAAT). Rapid antigen tests will not be accepted.*

Beginning October 14, 2022

(Disney Wish, Disney Dream, Disney Fantasy and Disney Wonder)

This policy will apply to **Disney Magic sailings beginning November 7, 2022.**

GUESTS AGES 12 AND OLDER

- Full vaccination not required but highly recommended
- Testing for fully vaccinated Guests not required
 - *To be exempt from testing requirements, fully vaccinated Guests must upload their proof of vaccination to the Inspire Diagnostics Safe Passage website by midnight prior to embarkation day.*
- Testing for unvaccinated Guests required
 - *Unvaccinated Guests must provide results of a COVID-19 test taken 1 to 2 days before sail date. The test may be an observed antigen test through a proctored telehealth service with digital results. A rapid or lab-based PCR test, or Nucleic Acid Amplification Test (NAAT) are also acceptable.*

GUESTS AGES 5 TO 11

- Full vaccination not required but highly recommended
- Testing for fully vaccinated Guests not required
 - *To be exempt from testing requirements, fully vaccinated Guests must upload their proof of vaccination to the Inspire Diagnostics Safe Passage website by midnight prior to embarkation day.*
- Testing for unvaccinated Guests required
 - *Unvaccinated Guests must provide results of a COVID-19 test taken 1 to 2 days before sail date. The test may be an observed antigen test through a proctored telehealth service with digital results. A rapid or lab-based PCR test, or Nucleic Acid Amplification Test (NAAT) are also acceptable.*

GUESTS AGES 4 AND YOUNGER

- Full vaccination not required but highly recommended
- Testing not required

In consideration of guidance from the CDC and the World Health Organization, Disney Cruise Line accepts the following vaccine types for Guests ages 5 and older: Pfizer, Moderna, Johnson & Johnson, AstraZeneca, Covishield, Novavax, Sinopharm BBIBP-CorV (VeroCell), Sinovac-CoronaVac and Covaxin (Bharat Biotech).

For Guests ages 5 and older, the Centers for Disease Control and Prevention (CDC) defines fully vaccinated as 14 days after receiving one of the following:

- A single dose of an accepted 1-dose vaccine.
- The second dose of an accepted 2-dose vaccine.
- The full series of an active (not placebo) COVID-19 vaccine in the US-based AstraZeneca or Novavax COVID-19 vaccine trials.
- The second dose of any "mix and match" combination of accepted COVID-19 vaccines (administered at least 17 days apart).

Disney Cruise Line accepts Pfizer and Moderna for Guests ages 4 and younger; Sinopharm (BBIBP-CorV, VeroCell) for Guests ages 3 through 4 years of age; and Sinovac (CoronaVac) for Guests ages 6 months through 3 years.

For Guests ages 4 and younger, the CDC defines fully vaccinated as 14 days after receiving one of the following:

- 3 doses of Pfizer: the second dose administered 21 days after the first; and the third dose administered 56 days after the second.
- 2 doses of Moderna: the second dose administered one month after the first.
- 2 doses of Sinopharm BBIBP-CorV (VeroCell): the second dose administered 21 to 28 days after the first.
- 2 doses of Sinovac-CoronaVac: the second dose administered 14 to 28 days after the first.

Guests who are not fully vaccinated are considered unvaccinated and should follow the appropriate guidelines.

[Read Our Privacy Policy](#)



Face Coverings

Learn more about where face coverings are required aboard the ship.

[Read More](#)



Online Check-In

Before setting sail, download the Disney Cruise Line Navigator app—then complete your Online Check-In and select a port arrival time.

[Read More](#)



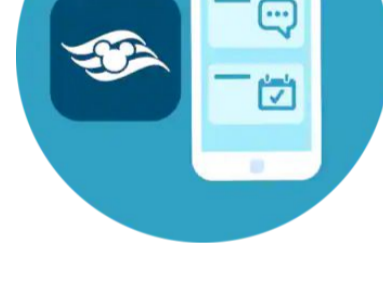
Book with Confidence

Enjoy peace of mind when booking your cruise, knowing there are options available that allow you to change or cancel your booking flexibly.

[Read More](#)

While On Board

Learn more about what to expect on board the ship—including enhanced cleaning protocols and temporarily impacted venues and activities.



Stateroom and Mandatory Emergency Drill

Your stateroom will be ready at 2:00 PM. Before heading there, you will need to take part in our Mandatory Emergency Drill.

[Read More](#)



Enhanced Cleaning & Crew Training

We've updated our protocols for cleanliness throughout our ships.

[Read More](#)



Ports of Call

Before making your way off the ship to explore a port of call on your cruise itinerary, take a moment to review these important things you'll need to know.

[Read More](#)

Your Guide to Updated Experiences



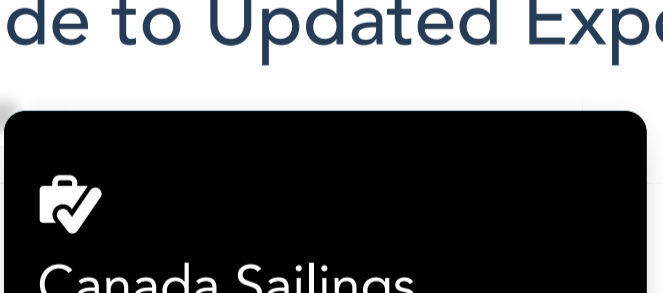
Know Before You Go

Discover the top things you need to know before embarking on your Disney cruise.



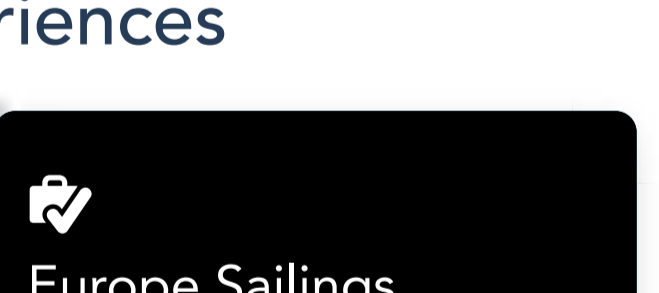
Pre-Cruise Checklist

View and keep track of everything you'll need to do in order to set sail.



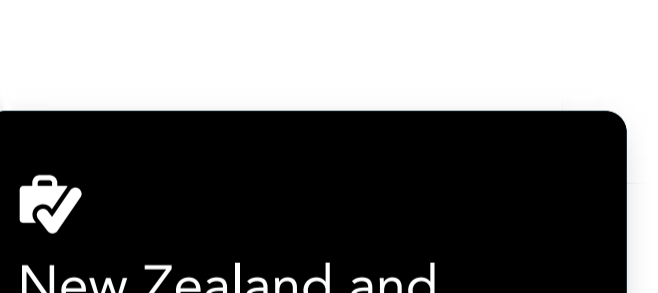
Canada Sailings

Learn more about sailings arriving to and departing from Canada.



Europe Sailings

Explore what you need to know for cruises sailing through Europe.



New Zealand and Australia Sailings

Find out what you need to know for sailings Down Under.

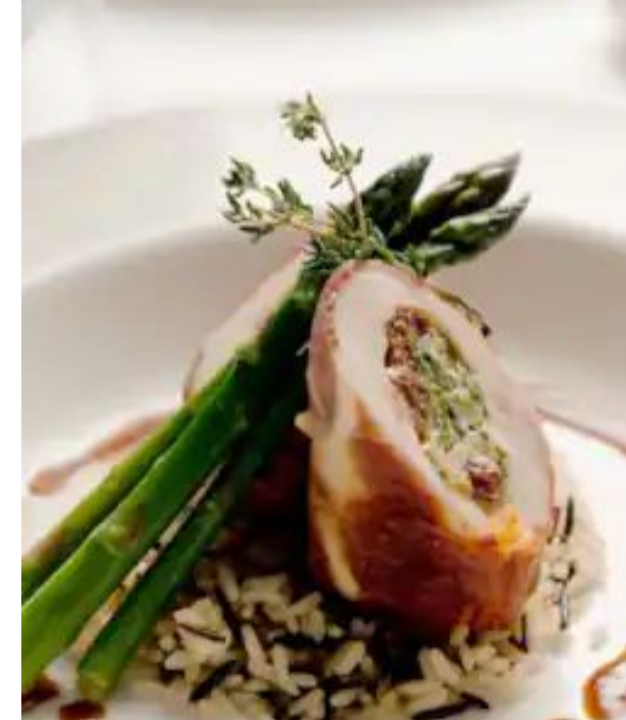
What to Expect on Your Next Disney Cruise

Our cruises are tailored to our times with all the care you'd expect from Disney. Legendary service, renowned attention to detail and Disney storytelling.



Enchanting Entertainment

From Broadway-style live musicals and appearances by Disney Characters to dazzling fireworks at sea, entertainment that thrills is always front and center.



Outstanding Dining

Delight in mouthwatering, artfully prepared meals and snacks in wondrously themed dining rooms and throughout the ship each and every day of your cruise.



Pools & Waterslides

Whether you're looking to cool down or simply relax the day away, make waves at refreshing pools, splash zones and water slides for the entire family.



Youth Activities

Children of all ages are sure to find something to love at age-appropriate kids clubs—thanks to fun-filled activities, games, surprises and more.



Our Private Island

Reserved for our Bahamian and Caribbean cruises, Disney Castaway Cay is our private port-of-call paradise. Enjoy tropical activities with a ray of Disney magic.

For assistance with your Disney Cruise, or please call (800) 951-3532.

Guests under 18 years of age must have parent or guardian permission to call.

Things to Do

- Onboard Activities
- Character Experiences
- Deck Parties
- Dining
- Live Shows & Entertainment
- Nightclubs & Lounges
- Spa & Fitness
- Youth Clubs
- Pools

Ships

- Disney Magic
- Disney Wonder
- Disney Dream
- Disney Fantasy
- Disney Wish

Staterooms

- Disney Magic Staterooms
- Disney Wonder Staterooms
- Disney Dream Staterooms
- Disney Fantasy Staterooms
- Disney Wish Staterooms

Cruises & Destinations

- Find a Cruise
- Departure Ports
- Special Offers
- Land and Sea Vacations
- Florida Cruises
- Port Adventures
- Adventures by Disney
- Vacation Packages

Interactive Deck Plans

- Disney Magic
- Disney Wonder
- Disney Dream
- Disney Fantasy
- Disney Wish

Help

- Frequently Asked Questions
- Guest Services
- planDisney
- Contact Us
- Guests with Disabilities
- Site Map
- Website Terms and Conditions
- Booking Security and Conditions
- Safety and Security
- Disney Cruise Line Vacation Protection Plan
- Your Key Rights and Financial Protection
- Cruise Contract

Plan & Manage

- My Reservations
- My Online Check-In
- My Cruise Activities
- Make a Payment
- Travel Agent Login
- Cruise-Planning Tools
- New to Cruising Tips
- My Account
- My Profile
- My Family & Friends
- Castaway Club
- My Cruise Photos
- Before You Go
- Disney Cruise Line Navigator App
- Photography
- Onboard Gifts
- Travel Documentation
- News & Press
- Disney Cruise Line News
- Disney Cruise Line Awards

Stay Connected



Disney Parks



Vacation Planning Video



Related Disney Sites

- Walt Disney World
- Disney® Premier Visa® Card
- planDisney
- Disney+
- Disneyland
- Disney Gift Card
- Disney PhotoPass Service
- Disney Meetings & Events
- Disney Vacation Club
- Adventures by Disney
- Disney Youth Programs
- Golden Oak
- Disney Institute
- ESPN Wide World of Sports
- runDisney
- Disney's Fairy Tale Weddings & Honeymoons



Magic Is Here



Know Before You Go

Learn what you can expect during your next Disney cruise—and be sure to check back soon as information is frequently updated.

Last Updated on October 7, 2022

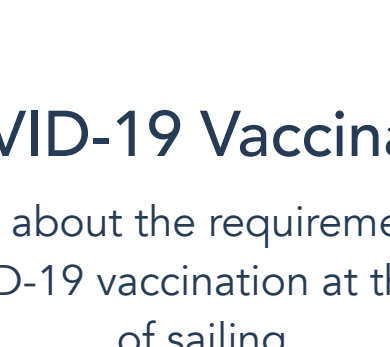
Welcome to an Unforgettable Vacation at Sea

Health and Safety Update:

Beginning October 7, 2022, for sailings departing from Florida ports, Guests are no longer required to provide proof of COVID-19 vaccination to sail. Guests who choose to provide proof of vaccination are exempt from testing requirements.

Top Things You Need to Know

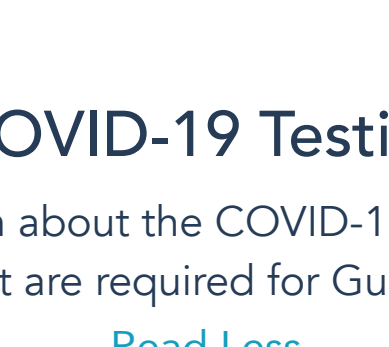
Explore the most important things you need to be aware of as you prepare for your Disney Cruise Line vacation.



COVID-19 Vaccination

Learn about the requirements for COVID-19 vaccination at the time of sailing.

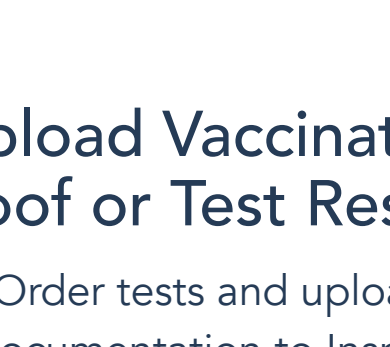
[Read More](#)



COVID-19 Testing

Learn about the COVID-19 tests that are required for Guests.

[Read Less](#)



Upload Vaccination Proof or Test Results

Order tests and upload documentation to Inspire Diagnostics Safe Passage website.

[Read More](#)

COVID-19 Testing

Learn about the COVID-19 tests that are required for Guests.

Guests who are not fully vaccinated are considered unvaccinated and should follow the appropriate guidelines.

Vaccination and testing requirements differ for sailings from New York aboard the Disney Magic from September 30, 2022, through October 21, 2022. For information about sailings to Bermuda, view the "Ports of Call" section on this page. For the voyage departing from New York on October 10, 2022, please review our [Canada Sailings](#) page.

Through October 13, 2022

GUESTS AGES 12 AND OLDER

- Full vaccination required
 - *Note: Guests on sailings from Florida are no longer required to be fully vaccinated or provide proof of vaccination.*
- Testing not required

GUESTS AGES 5 TO 11

- Full vaccination not required but highly recommended
- Testing for fully vaccinated Guests not required
- Testing for unvaccinated Guests required
 - *COVID-19 test taken 1 to 3 days before the sail date. The test must be a rapid or lab-based PCR test, or nucleic acid amplification test (NAAT). Rapid antigen tests will not be accepted.*

GUESTS AGES 4 AND YOUNGER

- Full vaccination not required but highly recommended
- Testing for fully vaccinated Guests not required
- Testing for unvaccinated Guests required
 - *COVID-19 test taken 1 to 3 days before the sail date. The test must be a rapid or lab-based PCR test, or nucleic acid amplification test (NAAT). Rapid antigen tests will not be accepted.*

Beginning October 14, 2022

(Disney Wish, Disney Dream, Disney Fantasy, and Disney Wonder)

This policy will apply to the **Disney Magic sailings beginning November 7, 2022.**

GUESTS AGES 12 AND OLDER

- Full vaccination not required but highly recommended
- Testing for fully vaccinated Guests not required
 - *To be exempt from testing requirements, fully vaccinated Guests must upload their proof of vaccination to the Inspire Diagnostics Safe Passage website by midnight prior to embarkation day.*
- Testing for unvaccinated Guests require
 - *Unvaccinated Guests must provide results of a COVID-19 test taken 1 to 2 days before sail date. The test may be an observed antigen test through a proctored telehealth service with digital results. A rapid or lab-based PCR test, or Nucleic Acid Amplification Test (NAAT) are also acceptable.*

GUESTS AGES 5 TO 11

- Full vaccination not required but highly recommended
- Testing for fully vaccinated Guests not required
 - *To be exempt from testing requirements, fully vaccinated Guests must upload their proof of vaccination to the Inspire Diagnostics Safe Passage website by midnight prior to embarkation day.*
- Testing for unvaccinated Guests required
 - *Unvaccinated Guests must provide results of a COVID-19 test taken 1 to 2 days before sail date. The test may be an observed antigen test through a proctored telehealth service with digital results. A rapid or lab-based PCR test, or Nucleic Acid Amplification Test (NAAT) are also acceptable.*

GUESTS AGE 4 AND YOUNGER

- Full vaccination not required but highly recommended
- Testing not required

Back-to-Back Sailings

All unvaccinated Guests on consecutive, back-to-back sailings will be required to complete a COVID-19 test between sailings, paid for by Disney Cruise Line.

Guests Recently Recovered from COVID-19

In some cases, people who have recently recovered from COVID-19 may still test positive for the SARS-CoV-2 virus. Guests who have tested positive for SARS-CoV-2 within 11 to 90 days of their scheduled sail date may qualify to be considered as "90-Day-Recovered." With the appropriate documentation and subsequent approval, Guests considered "90-Day-Recovered" are not required to participate in COVID-19 testing during the Pre-Sail, Embarkation or Debarkation phases of their voyage. **(This 90-day-recovered exemption does not apply to sailings to Bermuda.)**

If you have tested positive for COVID-19 within 11 to 90 days of your sail date and would like to be identified as 90-Day-Recovered, please upload the following to the Safe Passage website and bring the hard copies with you to the terminal on embarkation day:

- A copy of your professionally documented positive COVID-19 test result. The test must be taken greater than 11 days and less than 90 days from your scheduled sail date. The test must be an antigen, nucleic acid amplification test (NAAT), rapid PCR or lab-based PCR. The official test result must have been provided by a professional testing service and include your date of birth.
- A signed letter (on official letterhead that shows the name, address and phone number of a licensed healthcare provider or public health official) stating that you have recovered from COVID-19 in the last 90 days. The letter must be dated no earlier than 5 days after the date of your professionally documented positive COVID-19 test result.
- Vaccinated Guests must also upload proof of vaccination in addition to their 90-Day-Recovered documentation.

UNVACCINATED GUESTS HAVE OPTIONS FOR COVID-19 TESTING

At-Home Proctored Antigen Test from Inspire Diagnostics

This option is available to unvaccinated Guests who reside in the United States only. The test can be purchased directly from the Inspire Diagnostics [Safe Passage website](#) and must be completed 1 to 2 days before your sail date. Guests choosing to order testing kits from Inspire Diagnostics should order far enough in advance to arrive no more than 6 days before setting sail. Kits will come with instructions describing the steps to complete the observed antigen test via Inspire Diagnostics telehealth services. Results for tests proctored by Inspire Diagnostics will be automatically uploaded into Safe Passage on your behalf.

In-person Testing Near the Terminal Prior to Your Sail Date

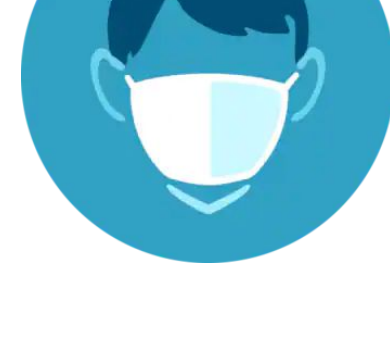
Guests can use the [Safe Passage website](#) to purchase and schedule in-person testing prior to their sail date at a location set up for Disney Cruise Line Guests near the cruise terminal. View testing locations on the [Safe Passage website](#).

Independent Testing Provider

Guests may obtain their COVID-19 test from any independent testing provider. When selecting an independent testing provider, please choose a provider with the fastest processing time. If submitting your test sample to an independent provider by mail, overnight mail is recommended. To upload your test results from an independent testing provider, log in to the Inspire Diagnostics [Safe Passage website](#) and follow the prompts for submitting your COVID-19 PCR test results. To avoid delay, test results should be uploaded as an image file (PDF, JPG, TIFF, etc.) no later than midnight prior to embarkation day. We also recommend that Guests bring hard copies of their negative COVID-19 test results with them to the terminal on embarkation day.

Guests with questions about the testing process should contact Inspire Diagnostics at (877) 250-5132, available 7 days a week, 8:00 AM to 8:00 PM, EST. You can also contact Inspire by email at DCLSupport@inspirediagnostics.com. In the subject line, please indicate that you are a Disney Cruise Line Guest. In the body of the email, please include your full name, reservation number and contact number, followed by your question.

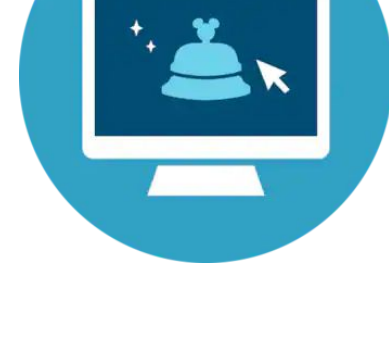
[Read Our Privacy Policy.](#)



Face Coverings

Learn more about where face coverings are required aboard the ship.

[Read More](#)



Online Check-In

Before setting sail, download the Disney Cruise Line Navigator app—then complete your Online Check-In and select a port arrival time.

[Read More](#)



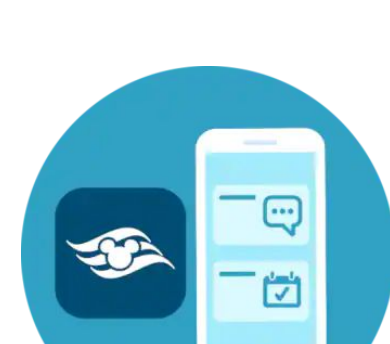
Book with Confidence

Enjoy peace of mind when booking your cruise, knowing there are options available that allow you to change or cancel your booking flexibly.

[Read More](#)

While On Board

Learn more about what to expect on board the ship—including enhanced cleaning protocols and temporarily impacted venues and activities.



Stateroom and Mandatory Emergency Drill

Your stateroom will be ready at 2:00 PM. Before heading there, you will need to take part in our Mandatory Emergency Drill.

[Read More](#)



Enhanced Cleaning & Crew Training

We've updated our protocols for cleanliness throughout our ships.

[Read More](#)



Ports of Call

Before making your way off the ship to explore a port of call on your cruise itinerary, take a moment to review these important things you'll need to know.

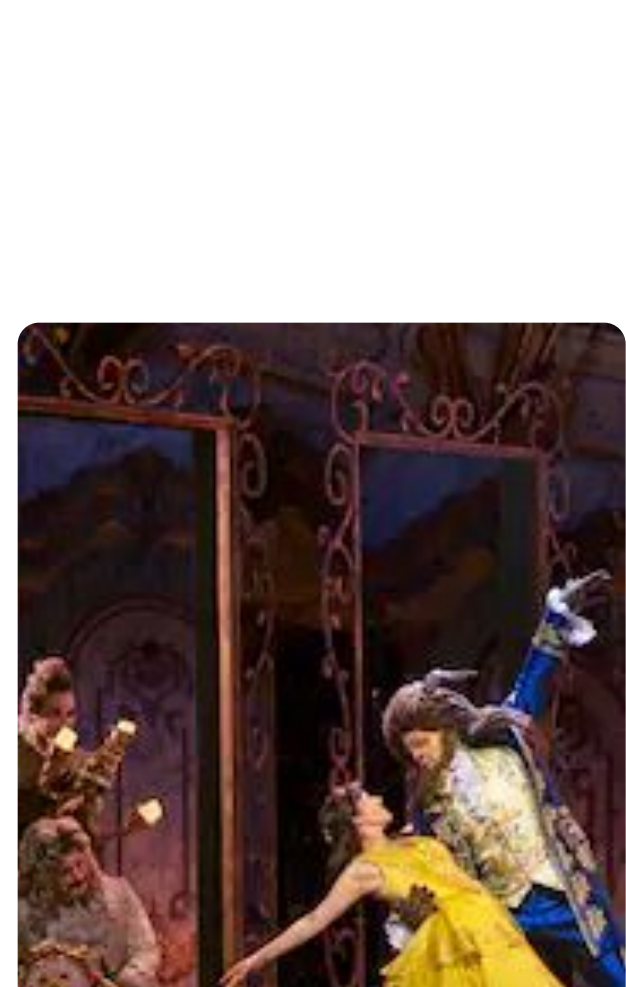
[Read More](#)

Your Guide to Updated Experiences

<p>Know Before You Go</p> <p>Discover the top things you need to know before embarking on your Disney cruise.</p>	<p>Pre-Cruise Checklist</p> <p>View and keep track of everything you'll need to do in order to set sail.</p>	<p>Canada Sailings</p> <p>Learn more about sailings arriving to and departing from Canada.</p>	<p>Europe Sailings</p> <p>Explore what you need to know for cruises sailing through Europe.</p>	<p>New Zealand and Australia Sailings</p> <p>Find out what you need to know for sailings Down Under.</p>
--	---	---	--	---

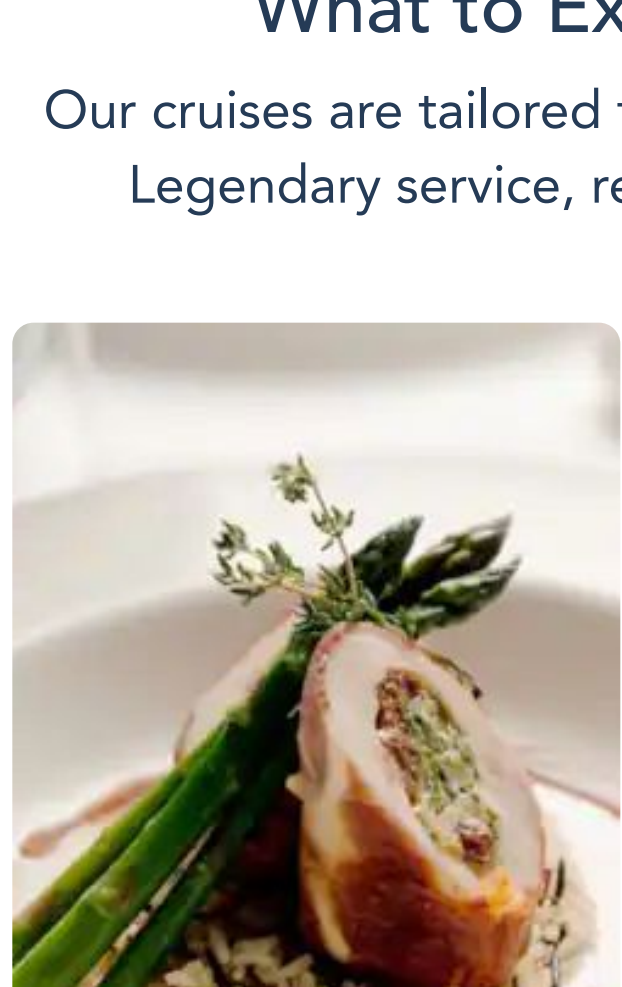
What to Expect on Your Next Disney Cruise

Our cruises are tailored to our times with all the care you'd expect from Disney. Legendary service, renowned attention to detail and Disney storytelling.



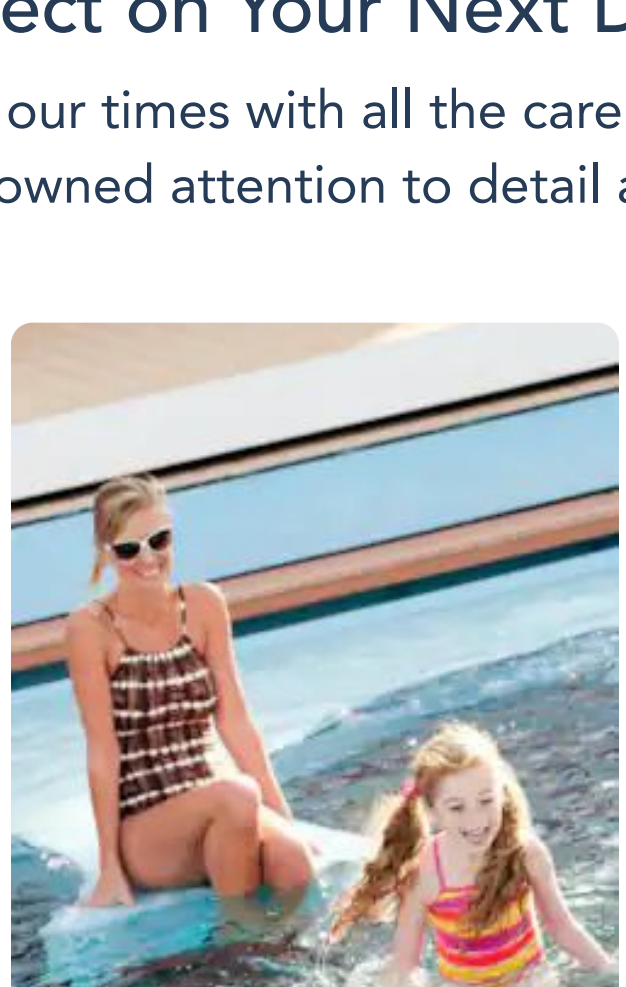
Enchanting Entertainment

From Broadway-style live musicals and appearances by Disney Characters to dazzling fireworks at sea, entertainment that thrills is always front and center.



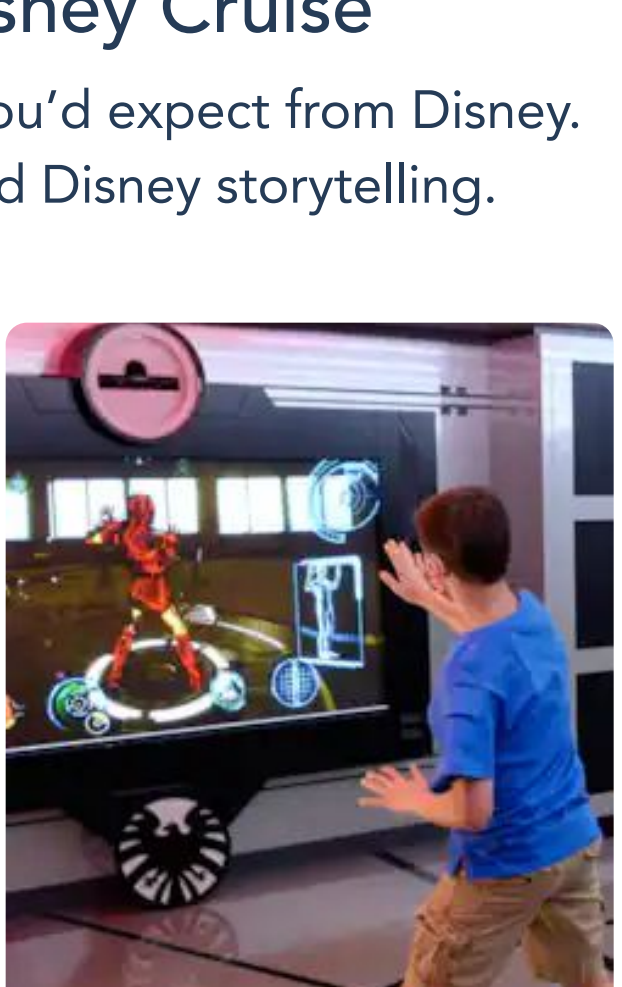
Outstanding Dining

Delight in mouthwatering, artfully prepared meals and snacks in wondrously themed dining rooms and throughout the ship each and every day of your cruise.



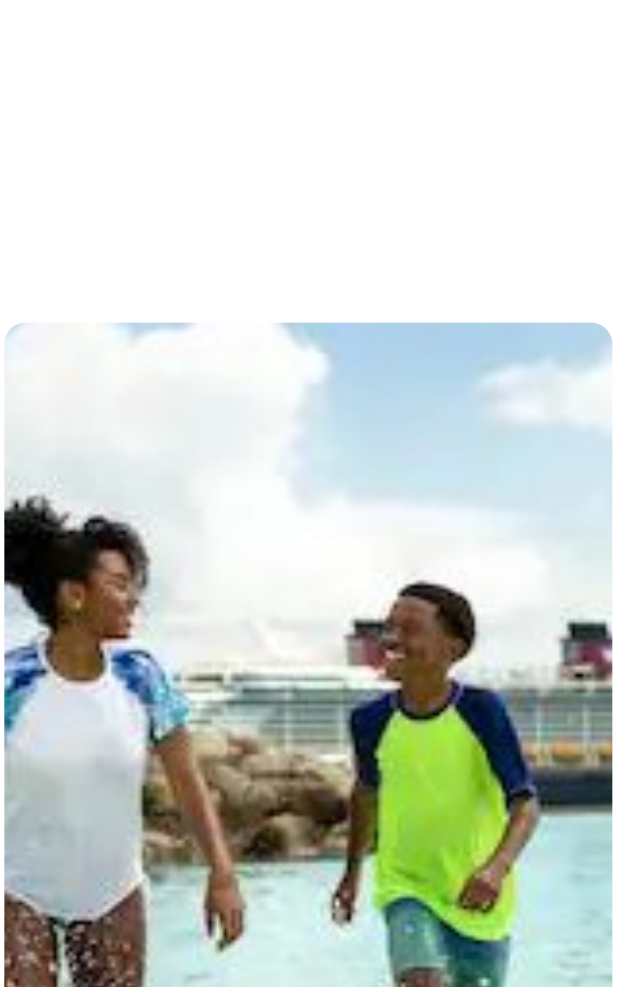
Pools & Waterslides

Whether you're looking to cool down or simply relax the day away, make waves at refreshing pools, splash zones and water slides for the entire family.



Youth Activities

Children of all ages are sure to find something to love at age-appropriate kids clubs—thanks to fun-filled activities, games, surprises and more.



Our Private Island

Reserved for our Bahamian and Caribbean cruises, Disney Castaway Cay is our private port-of-call paradise. Enjoy tropical activities with a ray of Disney magic.

For families with young children, please call (800) 951-3532.

Guests under 18 years of age must have parent or guardian permission to call.

<p>Things to Do</p> <ul style="list-style-type: none"> Onboard Activities Character Experiences Deck Parties Dining Live Shows & Entertainment Nightclubs & Lounges Spa & Fitness Youth Clubs Pools <p>Ships</p> <ul style="list-style-type: none"> Disney Magic Disney Wonder Disney Dream Disney Fantasy Disney Wish 	<p>Staterooms</p> <ul style="list-style-type: none"> Disney Magic Staterooms Disney Wonder Staterooms Disney Dream Staterooms Disney Fantasy Staterooms Disney Wish Staterooms <p>Cruises & Destinations</p> <ul style="list-style-type: none"> Find a Cruise Departure Ports Special Offers Land and Sea Vacations Florida Cruises Port Adventures Adventures by Disney Vacation Packages 	<p>Interactive Deck Plans</p> <ul style="list-style-type: none"> Disney Magic Disney Wonder Disney Dream Disney Fantasy Disney Wish <p>Help</p> <ul style="list-style-type: none"> Frequently Asked Questions Guest Services planDisney Contact Us Guests with Disabilities Site Map Website Terms and Conditions Booking Terms and Conditions Safety and Security Disney Cruise Line Vacation Protection Plan Your Key Rights and Financial Protection Cruise Contract 	<p>Plan & Manage</p> <ul style="list-style-type: none"> My Reservations My Online Check-In My Cruise Activities Make a Payment Travel Agent Login Cruise-Planning Tools New to Cruising Tips <p>My Account</p> <ul style="list-style-type: none"> My Profile My Family & Friends Castaway Club My Cruise Photos <p>Before You Go</p> <ul style="list-style-type: none"> Disney Cruise Line Navigator App Photography Onboard Gifts Travel Documentation <p>News & Press</p> <ul style="list-style-type: none"> Disney Cruise Line News Disney Safe Passage Awards
--	---	--	--

<p>Stay Connected</p>	<p>Disney Parks</p>	<p>Vacation Planning Video</p> <p>Start preparing for your dream Disney cruise. Watch Now</p>
------------------------------	----------------------------	--

<p>Related Disney Sites</p> <ul style="list-style-type: none"> Walt Disney World Disneyland Disney Vacation Club Disney Institute 	<ul style="list-style-type: none"> Disney® Premier View® Card Disney Gift Card Adventures by Disney ESPN Wide World of Sports 	<ul style="list-style-type: none"> planDisney Disney PhotoPass Service Disney Youth Programs rurDisney 	<ul style="list-style-type: none"> Disney+ Disney Meetings & Events Golden Oak Disney's Fairy Tale Weddings & Honeymoons
--	---	--	--



Magic Is Here



Know Before You Go

Learn what you can expect during your next Disney cruise—and be sure to check back soon as information is frequently updated.

Last Updated on **October 7, 2022**

Welcome to an Unforgettable Vacation at Sea

Health and Safety Update:

Beginning October 7, 2022, for sailings departing from Florida ports, Guests are no longer required to provide proof of COVID-19 vaccination to sail. Guests who choose to provide proof of vaccination are exempt from testing requirements.

Top Things You Need to Know

Explore the most important things you need to be aware of as you prepare for your Disney Cruise Line vacation.



COVID-19 Vaccination

Learn about the requirements for COVID-19 vaccination at the time of sailing.

[Read More](#)



COVID-19 Testing

Learn about the COVID-19 tests that are required for Guests.

[Read More](#)



Upload Vaccination Proof or Test Results

Order tests and upload documentation to Inspire Diagnostics Safe Passage website.

[Read Less](#)

Upload Vaccination Proof or Test Results

Order tests and upload documentation to Inspire Diagnostics Safe Passage website.

Register with Safe Passage

In order to sail, Guests ages 18 and older must individually create an account associated with their reservation(s) on the Inspire Diagnostics [Safe Passage website](#) and upload their proof of vaccination and/or negative COVID-19 test results no later than midnight prior to their sail date. Results from tests proctored by Inspire Diagnostics will be automatically uploaded into Safe Passage on your behalf. Inspire Diagnostics is Disney Cruise Line's third-party partner for COVID-19 testing and vaccination verification. A parent or legal guardian will need to use their own account to provide this information on behalf of minors. An account cannot be created sooner than 15 days prior to sailing.

Upload Proof of Vaccination

Vaccination documentation must reflect the following:

- Full name, matching the name on your Disney Cruise Line reservation
- Date of birth
- Name of first vaccine and the date of your first dose
- Name of second vaccine and the date of your second dose

If your information is listed in multiple documents, upload images of all. Please also bring hard copies of your documentation to the cruise terminal on debarkation day.

CHECK TO ENSURE YOUR PARTY IS CLEARED FOR TRAVEL

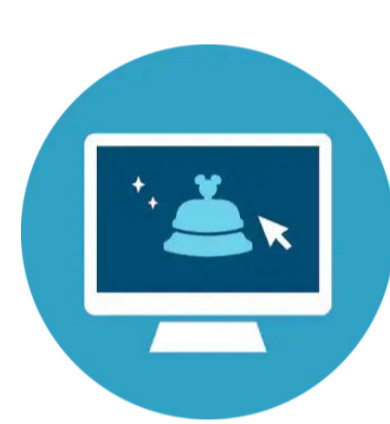
Guests may be denied boarding if Inspire Diagnostics has not received the required documentation and/or pre-arrival test results needed to sail. Check the Inspire Diagnostics [Safe Passage website](#) to ensure your account indicates everyone in your travel party is "Cleared to Arrive" or "Clear to Sail."



Face Coverings

Learn more about where face coverings are required aboard the ship.

[Read More](#)



Online Check-In

Before setting sail, download the Disney Cruise Line Navigator app—then complete your Online Check-In and select a port arrival time.

[Read More](#)



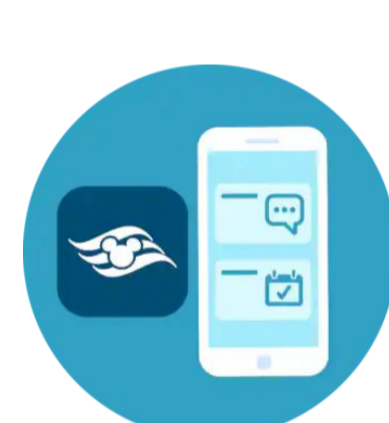
Book with Confidence

Enjoy peace of mind when booking your cruise, knowing there are options available that allow you to change or cancel your booking flexibly.

[Read More](#)

While On Board

Learn more about what to expect on board the ship—including enhanced cleaning protocols and temporarily impacted venues and activities.



Stateroom and Mandatory Emergency Drill

Your stateroom will be ready at 2:00 PM. Before heading there, you will need to take part in our Mandatory Emergency Drill.

[Read More](#)



Enhanced Cleaning & Crew Training

We've updated our protocols for cleanliness throughout our ships.

[Read More](#)



Ports of Call

Before making your way off the ship to explore a port of call on your cruise itinerary, take a moment to review these important things you'll need to know.

[Read More](#)

Your Guide to Updated Experiences

Know Before You Go

Discover the top things you need to know before embarking on your Disney cruise.

Pre-Cruise Checklist

View and keep track of everything you'll need to do in order to set sail.

Canada Sailings

Learn more about sailings arriving to and departing from Canada.

Europe Sailings

Explore what you need to know for cruises sailing through Europe.

New Zealand and Australia Sailings

Find out what you need to know for sailings Down Under.

What to Expect on Your Next Disney Cruise

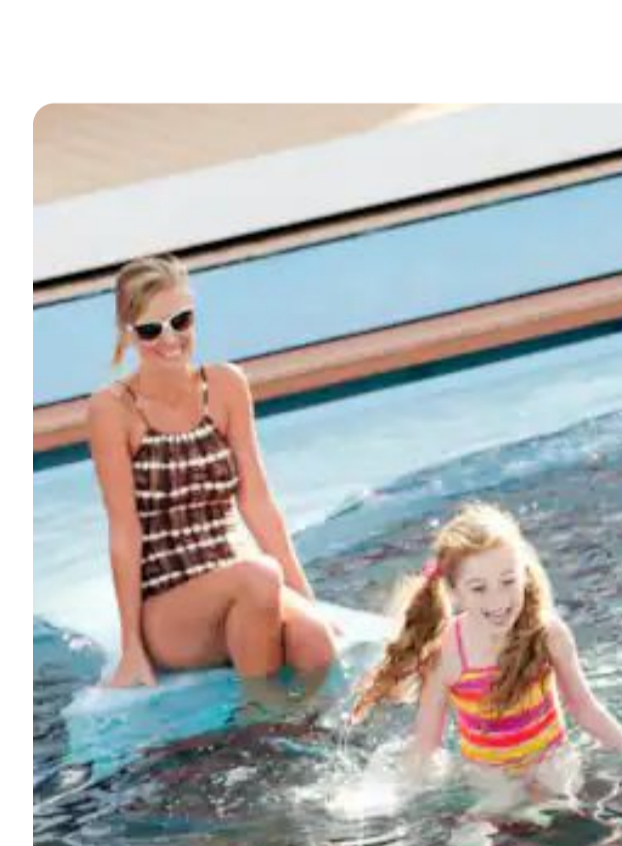
Our cruises are tailored to our times with all the care you'd expect from Disney. Legendary service, renowned attention to detail and Disney storytelling.



Enchanting Entertainment
From Broadway-style live musicals and appearances by Disney Characters to dazzling fireworks at sea, entertainment that thrills is always front and center.



Outstanding Dining
Delight in mouthwatering, artfully prepared meals and snacks in wondrously themed dining rooms and throughout the ship each and every day of your cruise.



Pools & Waterslides
Whether you're looking to cool down or simply relax the day away, make waves at refreshing pools, splash zones and water slides for the entire family.



Youth Activities
Children of all ages are sure to find something to love at age-appropriate kids clubs—thanks to fun-filled activities, games, surprises and more.



Our Private Island
Reserved for our Bahamian and Caribbean cruises, Disney Castaway Cay is our private port-of-call paradise. Enjoy tropical activities with a ray of Disney magic.

For assistance with your Disney Cruise, please call **(800) 951-3532**.

Guests under 18 years of age must have parent or guardian permission to call.

Things to Do

Onboard Activities
Character Experiences
Deck Parties
Dining
Live Shows & Entertainment
Nightclubs & Lounges
Spa & Fitness
Youth Clubs
Pools

Ships

Disney Magic
Disney Wonder
Disney Dream
Disney Fantasy
Disney Wish

Staterooms

Disney Magic Staterooms
Disney Wonder Staterooms
Disney Dream Staterooms
Disney Fantasy Staterooms
Disney Wish Staterooms

Cruises & Destinations

Find a Cruise
Departure Ports
Special Offers
Land and Sea Vacations
Florida Cruises
Port Adventures
Adventures by Disney
Vacation Packages

Interactive Deck Plans

Disney Magic
Disney Wonder
Disney Dream
Disney Fantasy
Disney Wish

Help

Frequently Asked Questions
Guest Services
planDisney
Contact Us
Guests with Disabilities
Site Map
Website Terms and Conditions
Booking Terms and Conditions
Safety and Security
Disney Cruise Line Vacation Protection Plan
Your Key Rights and Financial Protection
Cruise Contract

Plan & Manage

My Reservations
My Online Check-In
My Cruise Activities
Make a Payment
Travel Agent Login
Cruise-Planning Tools
New to Cruising Tips

My Account

My Profile
My Family & Friends
Castaway Club
My Cruise Photos

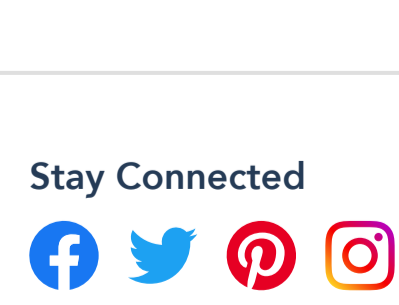
Before You Go

Disney Cruise Line Navigator App
Photography
Onboard Gifts
Travel Documentation

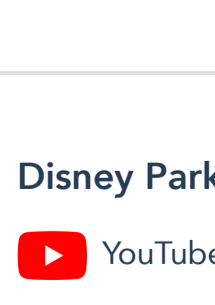
News & Press

Disney Cruise Line News
Disney Cruise Line Awards

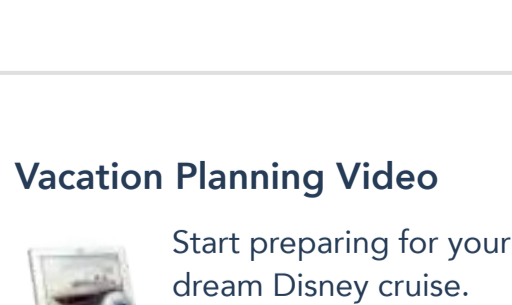
Stay Connected



Disney Parks



Vacation Planning Video



Related Disney Sites

Walt Disney World
Disneyland

Disney Vacation Club
Disney Institute

Disney® Premier Visa® Card
Disney Gift Card

Adventures by Disney
ESPN Wide World of Sports

planDisney
Disney PhotoPass Service

Disney Youth Programs
runDisney

Disney+

Disney Meetings & Events
Golden Oak
Disney's Fairy Tale Weddings & Honeymoons