

Important Information
Some images and content on this website may not represent the latest operational guidelines or health and safety measures that will be in place during future sailings. Health and safety measures, ports of call and offerings may change at any time without notice. Certain onboard venues, experiences and other offerings will be modified or unavailable, will have limited capacity and will be subject to limited availability, advance reservations or even closure.

COVID-19 Warning
An inherent risk of exposure to COVID-19 exists in any public place where people are present. [View important details.](#)



Magic Is Here



Know Before You Go

As we set sail again, discover what you can expect—and be sure to check back as information is frequently updated.

Last Updated on August 15, 2022

Welcome to an Unforgettable Vacation at Sea

We are pleased to share our plans for a phased relaunch of Disney Cruise Line.

While our cruise experience may have changed a bit, we've come up with new and exciting offerings to create magical memories together—tailored to our times and presented with all the care you've come to expect from Disney Cruise Line. From original live shows inside the lavish Walt Disney Theatre to innovative new ways to see and interact with Disney Characters throughout the ship, storytelling springs to life on a Disney cruise.

As we set sail again, the health and safety of our Guests, Cast Members and Crew Members is a top priority. Our focus remains on operating our ships in a responsible way that continues to create magic for all on board. We are resuming sailing in a gradual, phased approach that emphasizes multiple layers of health and safety measures, considering guidance from the US Centers for Disease Control and Prevention and other medical experts. Under this guidance, we've reimaged your cruise experience so we all can enjoy the magic responsibly.

Additionally, enjoy peace of mind when booking your cruise, knowing there are options available that allow you to change or cancel your booking flexibly.

Navigating Together: Our Enhanced Health & Safety Measures

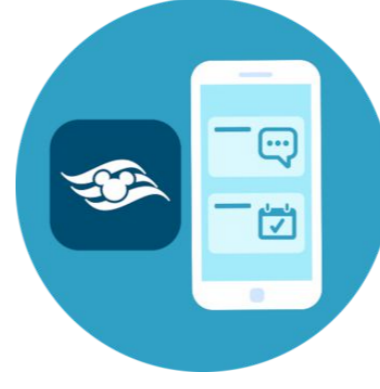
Our approach brings together 5 elements that help us promote health and safety for all Guests, Crew Members and Cast Members, something we at Disney Cruise Line take very seriously. [Read our Privacy Policy.](#)



Health & Wellness
We're emphasizing a combination of measures to help promote health and wellness on our ships. [Read More](#)



Enhanced Cleaning
We've updated our protocols for cleanliness throughout our ships. [Read More](#)



Innovative Technology
We're harnessing the power of the Disney Cruise Line Navigator app. [Read More](#)



Crew Member Training
Health and safety starts with our Crew, so we've adopted a number of additional policies and protocols. [Read More](#)



Working Together
We're giving Guests the information they need to navigate our new policies and do their part. [Read More](#)

Top Things You Need to Know

Here are the most important things you need to be aware of as you prepare for your Disney Cruise Line vacation.



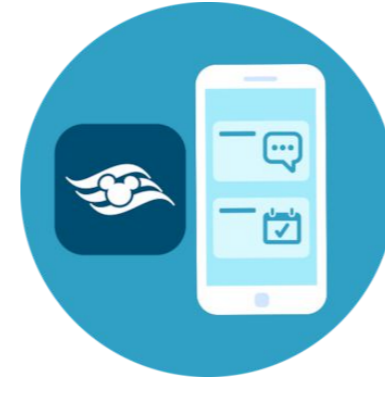
COVID-19 Vaccination
Learn about the requirements for COVID-19 vaccination at the time of sailing. [Read More](#)



COVID-19 Testing
Learn about the COVID-19 tests that are required for Guests before leaving home and at the terminal for sailings departing US and Canadian ports. [Read More](#)



Face Coverings
Learn more about where face coverings are required aboard the ship. [Read More](#)



Disney Cruise Line Navigator App
Download the latest version of our app on your mobile device, with location services and notifications enabled. [Read More](#)



Online Check-In
Be sure to complete your Online Check-In at least one day prior to the date you set sail. [Read More](#)

Your Guide to Updated Experiences

<p>Know Before You Go Read about our enhanced health and safety measures, and discover the top things you'll need to know for your cruise.</p>	<p>Pre-Cruise Checklist View and keep track of everything you'll need to do in order to set sail.</p>	<p>Before Leaving Home Check out what you'll need to do prior to making your way to the cruise terminal.</p>
<p>Embarkation Day Learn what you can expect at the cruise terminal, before you board the ship.</p>	<p>On the Ship Discover the latest information regarding dining, entertainment, recreation and more.</p>	<p>Ports of Call Find out about Port Adventures and what you can expect when exploring cruise destinations.</p>
<p>Debarcation Day View valuable information about your final cruise day as you leave the ship.</p>		

Important Information

Health and safety measures, ports of call and offerings may change at any time without notice. Upon reopening, certain onboard venues, experiences and other offerings will be modified or unavailable, will have limited capacity and will be subject to limited availability, advance reservations or even closure. We reserve the right to cancel any reservations or purchases—please review your rights in our Terms and Conditions. Subject to government approval.

COVID-19 Warning

An inherent risk of exposure to COVID-19 exists in any public place where people are present. COVID-19 is an extremely contagious disease that can lead to severe illness and death. According to the Centers for Disease Control and Prevention, senior citizens and Guests with underlying medical conditions are especially vulnerable.

By sailing with Disney Cruise Line you voluntarily assume all risks related to exposure to COVID-19.

Help keep each other healthy.

Health Acknowledgement

Please make sure that you have reviewed and follow any advisories or restrictions that may be in place for travel, including those posted on Florida COVID-19 website. Guests who are or may be at increased risk of severe illness due to contracting COVID-19 should consult with their health care provider before sailing.

By boarding a Disney Cruise Line ship, you are confirming that you and all persons in your party have not been in close contact with someone confirmed or suspected of COVID-19 within the last 14 days and are not experiencing any of the following symptoms of COVID-19 identified by the US Centers for Disease Control and Prevention including:

- Fever or chills
- Cough
- Shortness of breath or difficulty breathing
- Fatigue
- Muscle or body aches
- Headache
- New loss of taste or smell
- Sore throat
- Congestion or runny nose
- Nausea or vomiting
- Diarrhea

You must report to Disney Cruise Line if you experience any COVID-19 symptoms while on board. Guests who cannot confirm all of the above criteria must not board the ship. If at any point during their cruise a Guest does not meet all of the above criteria, they—and their traveling party and close contacts—will be required to isolate.

If you need to reschedule your sailing, please call (800) 951-3532.

By boarding a Disney Cruise Line ship, you acknowledge that you understand and will abide by the above health and safety requirements.

What to Expect on Your Next Disney Cruise

Our cruises are tailored to our times with all the care you'd expect from Disney. Legendary service, renowned attention to detail and Disney storytelling.

<p>Enchanting Entertainment From Broadway-style live musicals and appearances by Disney Characters to dazzling fireworks at sea, entertainment that thrills is always front and center.</p>	<p>Outstanding Dining Delight in mouthwatering, artfully prepared meals and snacks in wondrously themed dining rooms and throughout the ship each and every day of your cruise.</p>	<p>Pools & Waterslides Whether you're looking to cool down or simply relax the day away, make waves at refreshing pools, splash zones and water slides for the entire family.</p>	<p>Youth Activities Children of all ages are sure to find something to love at age-appropriate kids clubs—thanks to fun-filled activities, games, surprises and more.</p>	<p>Our Private Island Reserved for our Bahamian and Caribbean cruises, Disney Castaway Cay is our private port-of-call paradise. Enjoy tropical activities with a ray of Disney magic.</p>
--	--	--	--	---

For assistance with your Disney Cruise, please call (800) 951-3532. Monday through Friday, 8:00 AM to 10:00 PM Eastern time; Saturday and Sunday, 10:00 AM to 10:00 PM Eastern time. Guests under 18 years of age must have parent or guardian permission to call.

Things to Do Onboard Activities Character Experiences Deck Parties Dining Live Shows & Entertainment Nightclubs & Lounges Spa & Fitness Youth Clubs Ports of Call Ships Disney Magic Disney Wonder Disney Dream Disney Fantasy Disney Wish	Staterooms Disney Magic Staterooms Disney Wonder Staterooms Disney Dream Staterooms Disney Fantasy Staterooms Disney Wish Staterooms Cruises & Destinations Find a Cruise Destination Ports Special Offers Land and Sea Vacations Florida Cruises Port Adventures Adventures by Disney Vacation Packages	Interactive Deck Plans Disney Magic Disney Wonder Disney Dream Disney Fantasy Disney Wish Help Frequently Asked Questions Guest Services planDisney Contact Us Guests with Disabilities Site Map Website Terms and Conditions Safety and Security Booking Terms and Conditions Disney Cruise Line Vacation Protection Plan Your Age, Rights and Financial Protection Cruise Contract	Plan & Manage My Reservations My Online Check-In My Cruise Activities Make a Payment Travel Agent Login Cruise Planning Tools New to Cruising Tips My Account My Profile My Family & Friends Golden Oak My Cruise Photos Before You Go Disney Cruise Line Navigator App Photography Onboard Gifts Travel Documentation News & Press Disney Cruise Line News Disney Cruise Line Awards
---	--	--	--

Stay Connected 	Disney Parks 	Vacation Planning Video <p>Start preparing for your dream Disney cruise. Watch now</p>
---------------------------	-------------------------	--

Related Disney Sites Walt Disney World Disneyland Disney Vacation Club Disney Institute	Disney Gift Card Adventures by Disney ESPN Wide World of Sports	planDisney Disney PhotoPass Service Disney Youth Programs railDisney	Disney+ Disney Meetings & Events Golden Oak Disney's Fairy Tale Weddings & Honeymoons
--	---	---	--