

PERSONAL NAVIGATOR

Sunrise: 7:02 am Sunset: 5:54 pm
Evening Attire: Cruise Casual

Today: Cloudy High: 72°F/22°C
Tomorrow: Sunny High: 68°F/16°C

THURSDAY, JANUARY 28, 2016


DAY AT SEA

Disney's Believe

Genie from Aladdin and many of Disney's most beloved magic makers take a father on a magical journey to show him that anything is possible if you just believe.

WALT DISNEY THEATRE
DECK 3 & 4, FORWARD
6:15 pm & 8:30 pm

As a courtesy to all Guests, we kindly advise that the saving of seats is **not** permitted in the Walt Disney Theatre.

 Assistance available at the entrance to the Walt Disney Theatre 30 minutes prior to show time.



Disney DREAM Fun Facts

Tonnage: 129,690
Height: 66.13 m (217 feet)
Length: 339.8 m (1114.7 feet)

Important Dates

Name Announcement: March 2009
Steel Cutting: March 2009
Keel Laying: August 2009
Delivery: December 2010

Did you know?

The Sorcerer Mickey Mouse on the Disney Dream's stern is about 14 feet long. Constructed of stainless steel and fiberglass, it weighs approximately 2,500 pounds.



Debark Talk Broadcast

Important information regarding disembarkation procedures for your journey home will be covered in this debarkation briefing. The broadcast will be shown continuously on channel 5 of your stateroom television for your convenience. Please place your luggage outside your stateroom between 8:30 - 10:30 pm.

Thank you in advance for completing your comment card.



SEA YA' REAL SOON!

Mickey and Minnie along with the rest of the Walt Disney Characters invite you to join them in the ship's atrium for Sea Ya Real Soon. You won't want to miss this very special farewell presentation.

Lobby Atrium,
Deck 3, Midship,
10:15 pm

Don't Miss:

Good Morning Disney Dream
Tune in to channel 8 as your Cruise Director highlights the upcoming events, activities and port information for the day.

Making of the Dream
Evolution, Deck 4, Aft - 9:45 am
Explore the origins of Disney Cruise Line and the latest and greatest innovations conjured especially for the Disney Dream in this fascinating and entertaining behind-the-scenes program.

Anyone Can Cook - Apple Strudel
D Lounge, Deck 4, Midship - 10:30 am
From our galley to yours. Join our chefs as they show you how to prepare delicious dishes. Today's Menu - Apple Strudel.

Jack-Jack's Incredible Diaper Dash
Lobby Atrium, Deck 3, Midship - 11:30 am
Calling all baby cruisers! It's time to take to the mat to see who's the fastest crawler of the seven seas! Register your baby 15 minutes prior to the big race.



Book Your Next Disney Vacation Today!

If you're thinking about booking a future Disney vacation, today is your last chance to save with special offers only available onboard! The last day of the cruise tends to get busy in the evening, so don't miss this opportunity to plan your next Disney vacation. Visit the Disney Vacation Planning Center, Deck 4, Midship, for more information.

DINNER MENU

Animator's Palate: Pacific Rim Crusine
Enchanted Garden: Continental Market
Royal Palace: French Dinner

DRINK OF THE DAY

High Tide (Alcoholic)
Princess Delight (Non Alcoholic)

IMPORTANT NUMBERS

Fire/Security: 7-3001
Medical Emergency: 7-3000
Health Center: 7-1923

ADULT ACTIVITY HIGHLIGHTS

SENSES SPA FITNESS CLASSES & SEMINARS

Wake Up & Stretch Class - Senses Fitness Center - 7:00 am
Fab Abs - Senses Fitness Center - 7:30 am
Body Sculpt Boot Camp (Nom. Fee) - Senses Fitness Center - 8:00 am
Group Cycling (Sign-Up Required) - Senses Fitness Center - 9:00 am
Introduction to Acupuncture - Senses Fitness Center - 9:30 am
How to Increase Your Metabolism - District Lounge - 11:00 am
Good Feet: Relieving Back Pain - Senses Fitness Center - 2:00 pm
Acupuncture: Chinese Herbs - Senses Fitness Center - 3:00 pm



TASTING CLASSES

Chocolate & Liquor Tasting (21+) - Pink: Wine and Champagne Bar - 11:15 am
Stem to Stern Wine Tasting (21+) - Pink: Wine and Champagne Bar - 1:00 pm
Martini Tasting (21+) - Meridian - 1:30 pm
Mojito & Caipirinha Tasting (21+) - District Lounge - 3:00 pm
Mixology (21+) - Meridian - 3:30 pm
Champagne Tasting (21+) - Pink: Wine and Champagne Bar - 3:30 pm
 Please make reservations for tastings at Guest Services for a nominal fee. Tasting Seminars are only for Guests 21 and older.

1820 SOCIETY: LUNCH

Royal Palace, Deck 3, Midship - 12:30 pm
 Get to know your fellow Society members over lunch.



1820 SOCIETY: JENGA CHALLENGE

Pub 687, Deck 4, Aft - 4:30 pm
 Have some fun with this classic game.

1820 SOCIETY: FAREWELL

Evolution, Deck 4, Aft - 9:45 pm
 Join your Cruise Staff and your new friends in this last gathering for some fun.

ANYONE CAN COOK: LOBSTER RAVIOLI

D Lounge, Deck 4, Midship - 3:00 pm
 From our galley to yours. Join our chefs as they show you how to prepare delicious dishes. Today's Menu - Lobster Ravioli



80'S MUSIC CHALLENGE

Evolution, Deck 4, Aft - 10:15 pm
 "Moon Walk" back to the 80's as we put your musical knowledge of the decade to the test.



FUN FOR ALL AGES HIGHLIGHTS



FAMILY MOVIE FUN TIME: INSIDE OUT - (PG)

Buena Vista Theatre, Deck 4 & 5, Midship - 8:30 am
 Come join us for a special opportunity to enjoy Inside Out in the Buena Vista Theatre. We will leave some lights on and turn the volume down as audience members are welcome to talk, leave their seats, move about and (most importantly) have fun!



\$10,000 MEGA JACKPOT BINGO

Bingo Pre-Sales start at 11:00 am
Evolution, Deck 4, Aft - 11:15 am
 It's Big, it's Massive, it's Supersized! It's \$10,000 MEGA Jackpot Bingo! Take home \$10,000 if you can cover your card in 46 numbers or less. If not, we carry on to play for the biggest cash prize of the session. Pre-Sales start 15 minutes prior to game.



JACK-JACK'S INCREDIBLE DIAPER DASH

Lobby Atrium, Deck 3, Midship - 11:30 am
 Calling all baby cruisers! It's time to take to the mat to see who's the fastest crawler of the seven seas! Register your baby 15 minutes prior to the big race.



DISNEY VACATION CLUB GROUP PREVIEW

D Lounge, Deck 4, Midship - 12:15 pm & 4:15 pm
 Want to learn more about taking magical vacations year after year? Please see a Disney Vacation Club representative on Deck 4, Midship, or call 7-2805 from your stateroom phone for more information about our interactive group presentation.



DISNEY ANIMATION: CREATING A CHARACTER

D Lounge, Deck 4, Midship - 1:15 pm
 Go behind the scenes at Walt Disney Animation Studios as Walt Disney himself talks about his most famous characters, then learn the basic techniques of drawing your favorite pals in this fun and interesting enrichment program.

TOWEL FOLDING

D Lounge, Deck 4, Midship - 2:00 pm
 Learn to create those amazing towel creatures you've seen in your stateroom all cruise long.



MICKEY 200

Evolution, Deck 4, Aft - 3:15 pm
 Don't eat your vegetables... race them in this wild and wacky charge to the finish line. May the best veggie win! (Limited Availability)



FINAL JACKPOT BINGO

Bingo Pre-Sales start at 4:00 pm
Buena Vista Theatre, Deck 4 & 5, Midship - 4:30 pm
 The snowball jackpot MUST BE WON at this final session! Beat the line and get your cards early. Who will be the lucky winner? It could be you! Pre-Sales start 30 minutes prior to game.

OFFICER PIN TRADING

Preludes, Deck 3, Forward - 7:15 pm
 Come trade pins with the Officers of the Disney Dream.



CLUB NEW YEAR'S EVE

Evolution, Deck 4, Aft - 7:30 pm
 Club New Year's Eve, you won't want to miss this journey of musical genres in history and performances by some of your favorite Cruise Staff. Bring your family and help us count down to a brand new year!

DREAM QUEST

D Lounge, Deck 4, Midship - 9:45 pm
 Enjoy the wildest and wackiest scavenger team event on the seven seas!



CLUB D DANCE PARTY

D Lounge, Deck 4, Midship - 10:15 pm
 Join your Cruise Staff as we turn D Lounge into an electrifying family nightclub. Club D, where everyone is a VIP!



FAMILY SUPERSTAR KARAOKE

D Lounge, Deck 4, Midship - 10:45 pm
 Join your Cruise Staff in D Lounge tonight and sing along to your favorite song - fun for everyone.

YOUTH ACTIVITIES HIGHLIGHTS

Dine & Play

A convenience for families dining at 8:15 pm, our Youth Activities counselors will be available at 9:15 pm at the entrance of Royal Palace, Enchanted Garden and Animator's Palate dining rooms to bring registered children to join the fun in the Youth Activities areas.



Deck 5, Midship (7-1440)
(3 - 12 years old)

10:30 am - 12:00 am

JEDI TRAINING - EXPERIENCE THE FORCE

11:00 am

Become one with the Force as you take your first step into a larger world. Kids will learn the ways of the Force in this exciting program led by a Jedi.

MICKEY'S PUZZLE PLAYTIME

1:15 pm

Come and play with Mickey & friends as they share their favorite games, puzzles and dances!



Deck 5, Midship (7-1445)
(3 - 12 years old)

9:00 am - 12:00 am

GET THE HOOK

1:15 pm

A villainous villain has stolen Captain Hook's prized golden hook. Become a member of the Top Deck Detective Agency and help solve the clues to retrieve Hook's hook.

STITCH'S FINAL FAREWELL

2:00 pm

We'll get a very special guest as we celebrate the grand finale to this cruise!



Deck 13, Midship (7-9743)
(11 - 14 years old)

10:00 am - 12:00 am

SUPER SLOPPY SCIENCE

11:30 am

Join Professor Make-O-Mess in some of the most extreme experiments you will ever see in the world of Super Sloppy Science!

HOW WELL DO YOU KNOW YOUR COUNSELOR?

7:45 pm

Do you think you know all there is to know about your counselors? Come test out your knowledge with all of your friends!



Entrance on Deck 4, Forward (7-9417)
(14 - 17 years old)

11:00 am - 1:00 am

THAT'S HILARIOUS

5:00 pm

Ever wanted to show off your comedy skills? Then be a part of the cast for the crazy improv show "That's Hilarious" and put on a live show for your friends.

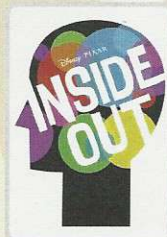
MIX AND MATCH

11:15 pm

Try to find your "perfect match" in Disney's very own "Dating" game.

BUENA VISTA THEATRE

Deck 4 & 5, Midship
Today's Movies



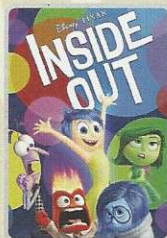
FAMILY MOVIE
FUN TIME
8:30 am
Duration:
1 hr 42 mins
Rating: PG



DOLBY 3D
10:45 am
Duration:
1 hr 40 mins
Rating: PG



1:00 pm
Duration:
2 hrs 16 mins
Rating: PG-13



DOLBY 3D
6:00 pm & 8:15 pm
Duration:
1 hr 42 mins
Rating: PG



(Viewer Discretion is Advised)
12:01 am
Duration:
1 hr 49 mins
Rating: PG-13

Disney CRUISE LINE ANYONE CAN COOK (Culinary Series)

FAMILY CULINARY SERIES

From our galley to yours.
Join our chefs as they
show you how to prepare
delicious dishes.

Today's Menu
Apple Strudel

D Lounge,
Deck 4, Midship,
10:30 am



ADULT VARIETY ACT

Repeat Show:
Featuring the
Comedy & Ventriloquism
of Taylor Mason,
as he entertains you in this
adult exclusive show.

Evolution (18+),
Deck 4, Aft,
10:45 pm

YOUTH ACTIVITIES OPEN HOUSE

Open House is an opportunity for all to come and participate in a variety of exciting activities and free time in the Oceaneer Club, Oceaneer Lab, Edge and Vibe throughout the cruise. During these times secured programming will still be offered in the other venues for those looking to check their children into care.

Disney's Oceaneer Club: 9:00 am - 10:30 am
Disney's Oceaneer Lab: 4:00 pm - 5:30 pm
Edge: 9:00 am - 10:00 am & 5:30 pm - 7:00 pm
Vibe: 10:00 am - 11:30 am & 7:30 pm - 8:45 pm

MORE TO ENJOY WHILE ONBOARD

SPECIAL DISNEY CRUISE LINE SAVINGS



The Mediterranean. Northern Europe. The Caribbean. Even Alaska! Find out all about special onboard savings on your next Disney Cruise Line vacation! Visit the Disney Vacation Planning Center, Deck 4, Midship.

DISNEY VACATION CLUB® GROUP PREVIEW



Want to learn more about taking magical vacations year after year? Please see a Disney Vacation Club representative on Deck 4, Midship, or call 7-2805 from your stateroom phone for more information about our interactive group presentation.

STAY CONNECTED WITH CELLULAR SERVICE

Cell phone and wireless PDA service is available in Guest staterooms through most plans. Pricing varies depending upon your wireless provider and usually includes International roaming rates.

SENSES

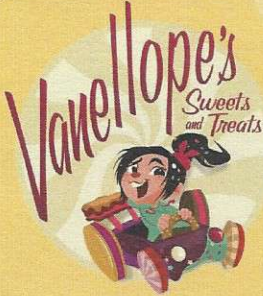
SPA & SALON

20.20.20 SPECIAL

20 minute back neck and shoulder massage, 20 minute scalp massage and 20 minute foot and ankle massage.

60 minutes for \$99.

Senses Spa & Salon, Deck 11, Forward, Ext. 7-1465



Race on over to Vanellope's Sweets & Treats where you can have your fill of assorted candy, delectable novelty treats, and handmade gelato and ice cream!

DECK 11, AFT

Shutters

PROFESSIONAL PORTRAITS TONIGHT!

Grand Staircase – Groups Accommodated

5:15 pm – 6:30 pm
7:15 pm – 8:30 pm

Visit Shutters for everything you need to capture your cruise photo memories. Now is the time to save on cameras and accessories with the best deals of the year! Extra special savings and gifts available with purchase, all at tax and duty free prices.

EXPRESS WALK-OFF

This option allows you to take your luggage off the ship at your leisure once the ship has been cleared by the local authorities. You won't need to wait for your luggage to enter the terminal and there is no need to claim it inside the terminal building. Please note that no assistance with luggage is provided for this option.

MIDSHIP DETECTIVE AGENCY

Use your detective know-how and our special detective "badge" to search the ship and catch your criminal! Deck 2 & 5, Midship Kiosks.

Connect@Sea

We are now offering a NEW and improved Internet service to stay connected on your cruise like no other in the industry! Internet packages range from \$0.25 per MB - \$89.00 (1000 MB package). For more information contact your Connect@Sea Expert or Guest Services onboard.

FREE ON DEMAND TV

Watch Disney movies, Hollywood features, and even captioned content, plus much more "On Demand" for FREE in the comfort of your stateroom! Bookmark your movie and come back to watch it later. Press MENU on your stateroom television remote control and follow the prompts.

SHOPPING

VANELLOPE'S SWEETS AND TREATS

Race on over to Vanellope's Sweets and Treats where you can have your fill of assorted candy, delectable novelty treats, and handmade gelato and ice cream! Deck 11, Aft.

SOPHIA FIORI GUESS THE CARAT WEIGHT

Whoever guesses closest wins a Sophia Fiori fine jewelry piece! 9:30 am - 7:15 pm, Winners Announced tonight at 7:30 pm. Must be present to win. White Caps, Deck 3, Forward.

CELEBRATE WITH THE BIBBIDI BOBBIDI BOUTIQUE!

There's always a reason to celebrate when sailing onboard the Disney Dream Cruise Ship! Join the celebration with the Bibbidi Bobbidi Boutique Celebration package that includes an exclusive Disney Cruise Line t-shirt and matching tutu. Make your reservation by visiting Bibbidi Bobbidi Boutique, Deck 5, Midship or dialing extension 7-9438. Limited space available.

INNOVATIVE DESIGNS BY CITIZEN WATCHES

It starts with a simple, yet revolutionary concept: a watch that never needs a battery. Citizen Eco-Drive technology harnesses the power of light from any natural or artificial light source and converts to energy. See the Collection of Men's and Ladies' watches available in White Caps, Deck 3, Forward.

CAPTAIN'S SIGNING

Come to White Caps at 7:15 pm to have your cruise merchandise signed by the Master of the Disney Dream Cruise Ship, Captain Daniele. Stunning replica ships are available in Sea Treasures, Deck 3, Forward. Beautiful Disney Cruise Line prints are available in the Vista Gallery, Deck 4, Midship.

OFFICER PIN TRADING

Check out the Disney Cruise Line pins when you visit Mickey's Mainsail. Later, join the Officers of the Disney Dream Cruise Ship for pin trading fun at 7:15 pm in Preludes. Deck 3, Forward.

STAR WARS MERCHANDISE

No need to travel to a galaxy far, far away to gear up on all things Star Wars! From graphic tees for the whole family to stylish Dooney & Bourke handbags with a unique Star Wars themed pattern, head to the onboard shops where you'll find an array of commemorative Star Wars merchandise. Deck 3, Forward.

IMPORTANT INFORMATION

Security Notice

All Guests (including children) who wish to disembark the ship are required to present their Key to the World card at the gangway. A photo ID is also required for those Guests who are 18 years of age or older. Guests under the age of 18 are required to have a parent, guardian or other responsible adult sign an authorization form at the Guest Service Desk if they wish to go ashore unaccompanied or with any adult from another stateroom.

Inclement Weather

For the safety of all Guests, outdoor events may be changed due to unforeseen weather conditions.

Cold and Flu Reminder

Please wash hands frequently and thoroughly, particularly before meals. Contact the Health Center by dialing 7-1923, should anyone in your party become ill.

Corridor Quiet Hours

As a courtesy to all our Guests, please recognize quiet hallway hours from 10:00 pm - 8:00 am.

Insect Repellent Advisory

Protect against mosquito bites and related illnesses when going ashore. Insect repellent is available for purchase in White Caps. When using both sunscreen and insect repellent, use sunscreen first and apply insect repellent on top of sunscreen.

Environmental Message

With Disney's commitment to the environment, please refrain from throwing anything over the ship's side. Thank you!

No Reserved Seats Policy

As a courtesy to all our Guests, we kindly advise that the saving of seats is not permitted in the Walt Disney Theatre, and the saving of the sun deck loungers is not permitted on Deck 11, 12 and 13. Items left unattended will be returned to lost and found at Guest Services, Deck 3, Midship.

Smoking

For the comfort of our guests the following areas are designated as Smoking areas:
• Deck 13, Forward, port side, by "Currents"
• Deck 12, Aft, port side outdoor area that is accessible through the Meridian Lounge
• Deck 4, Aft, port side, the outside Promenade Deck from 6:00 pm to 6:00 am only (all of Deck 4 is no smoking from 6:00 am to 6:00 pm).
-Smoking is prohibited inside all Guest staterooms and on stateroom verandahs. Guests found smoking in their staterooms or on their verandahs will be charged a \$250 stateroom recovery fee. Electronic cigarettes may only be used in designated smoking areas.

Walt Disney Theatre

Theatrical performances may use artificial fog, strobe lights, pyrotechnics and other special effects. For the safety of our performers and the comfort of those around you, the use of any photography, video recording devices or any electronic equipment is prohibited.

Verandah Safety

Please do not leave any combustible materials on your balcony when not present in your stateroom for safety reasons.

Morning	8:30	8:45	9:00	9:15	9:30	9:45	10:00	10:15	10:30	10:45	11:00	11:15	11:30	11:45	12:00	12:15	12:30	12:45	1:00	1:15	1:30
FUNNEL VISION	Lady and the Tramp (G) Funnel Vision						The Princess and the Frog (G) Funnel Vision						Movie Challenge Poolside Funnel Vision								
BUENA VISTA THEATRE	Family Movie Fun Time: Inside Out (PG) Duration: 1 Hour 42 Minutes									The Good Dinosaur (PG) DOLBY 3D Duration: 1 Hour 40 Minutes						Zootopia Preview		Star Wars: The Force Awakens (PG-13) Duration: 2 Hours 16 Minutes			
CHARACTERS			Minnie Deck 4, Balcony Lobby Atrium (V)	Woody Lobby Atrium (V)	Mickey Preludes	Stitch Preludes	Sofia Deck 4, Balcony	Character Dance Party Lobby Atrium													
FUN FOR ALL AGES			Morning Walk Deck 4, Portside	Family Crafts D Lounge	Making of the Dream Evolution 			Bingo Pre-Sales Evolution	\$10,000 Mega Jackpot BINGO Evolution			Movie Challenge Poolside Deck 11, Stage									
ADULTS	Friends of Bill W. Meridian	Art of The Theme Show Tour Meridian			Crafts: 3D Crafts Pub 687			ESPN Dream Team Draft Day - Baseball Pub 687			Disney Vacation Club D Lounge - Group Preview		Cruise Staff Lunch Royal Palace		Stem to Stem Wine Tasting (21+) Pink: Wine and Champagne Bar						
VIBE 14-17 YEARS OLD	Youth Activities Open House						Wii Challenge			GAGA Ball			Foosball Tournament		Smoothie Time		Craft Corner				
EDGE 11-14 YEARS OLD	Youth Activities Open House						Wii Challenge			Bingo			Super Sloppy Science		Ice Cream Social		Craft Corner				
OCEANEER LAB 3-12 YEARS OLD	Playmation						Super Sloppy Science			Stitch's Adventure Squad						Get the Hook					
OCEANEER CLUB 3-12 YEARS OLD	Youth Activities Open House						Disney Racers			Little Einstein's Adventure			Jedi Training - Experience the Force			Disney Infinity Challenge			Mickey's Puzzle Playtime		

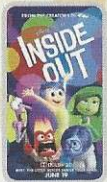
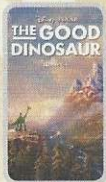
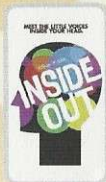
Afternoon	1:45	2:00	2:15	2:30	2:45	3:00	3:15	3:30	3:45	4:00	4:15	4:30	4:45	5:00	5:15	5:30	5:45	6:00	6:15	6:30	6:45	
FUNNEL VISION	Frozen (PG) Funnel Vision						Tangled (PG) Funnel Vision															
BUENA VISTA THEATRE	Star Wars: The Force Awakens (PG-13) Duration: 2 Hours 16 Minutes (Movie Starts at 1:00 pm)									Zootopia Preview			Inside Out (PG) DOLBY 3D Duration: 1 Hour 42 Minutes									
CHARACTERS	Cinderella Lobby Atrium (P)			Belle Lobby Atrium (P)			Donald Deck 4, Balcony			Daisy Deck 4, Balcony			Mickey Mouse Deck 4, Balcony			Pluto Lobby Atrium (V)						
FUN FOR ALL AGES	Towel Folding D Lounge		The Comedy & Ventriloquism of TAYLOR MASON Walt Disney Theatre						Bingo Pre Sales		Final Jackpot BINGO Buena Vista Theatre		Live Music with EnharmoniQ Lobby Atrium									
ADULTS	90's Music Trivia Pub 687			Relieving Back Pain Senses Fitness Center			Disney Tunes Trivia District Lounge			Disney Vacation Club D Lounge - Group Preview			Ultimate Disney Trivia Pub 687			Cruisin' Solo Gathering Cove Cafe						
VIBE 14-17 YEARS OLD	Craft Corner		Sun Deck Fun			Anyone Can Cook: Cupcakes			Teen Choice			That's Hilarious			Gender Wars		Karaoke					
EDGE 11-14 YEARS OLD	Craft Corner		GAGA Ball			Tween Choice			Chillin' in Edge			Game Challenge			Tween Choice			Youth Activities Open House				
OCEANEER LAB 3-12 YEARS OLD	Stitch's Final Farewell			Disney Animation: Creating a Character			Youth Activities Open House			Anyone Can Cook			Dinner						Magic PlayFloor		Playmation	
OCEANEER CLUB 3-12 YEARS OLD	Magic PlayFloor			Disney Infinity Challenge			Journey to Neverland			Star Wars Galaxy Designers			Disney Infinity: How to Draw the Characters									

Evening	7:00	7:15	7:30	7:45	8:00	8:15	8:30	8:45	9:00	9:15	9:30	9:45	10:00	10:15	10:30	10:45	11:00	11:15	11:30	11:45	12:00			
FUNNEL VISION	Toy Story 3 (G) Funnel Vision						Ratatouille (G) Funnel Vision						Remember the Titans (PG) Funnel Vision											
BUENA VISTA THEATRE	Inside Out (PG) DOLBY 3D Duration: 1 Hour 42 Minutes									The Finest Hours Movie Starts at 12:01 am														
CHARACTERS	Mickey Mouse Deck 4, Balcony			Minnie Mouse Lobby Atrium (V)																				
FUN FOR ALL AGES	Pin Trading Preludes								Dream Quest D Lounge															
ADULTS	2000's Music Trivia Pub 687			NCAA Basketball: Cincinnati vs. Connecticut Pub 687 (Subject to Satellite Reception & Availability)			Crafts: Memory Pages D Lounge			Live Music with The Get Ups District Lounge			1820 Society: Farewell Evolution						Cruise Staff DJ District Lounge					
VIBE 14-17 YEARS OLD	Karaoke		Youth Activities Open House						Game Challenge			Animation Antics			Chillin' in Vibe		Mix and Match							
EDGE 11-14 YEARS OLD	Cards Tournament		How Well Do You Know Your Counselor?			Game Challenge			That's Hilarious			Bring It!			Gender Wars		Final Farewell							
OCEANEER LAB 3-12 YEARS OLD	Playmation		Anyone Can Cook			Monster's Inc: Open "Mike" Night			Super Sloppy Science			Video Game Challenge			Dance Party		GAGA Ball							
OCEANEER CLUB 3-12 YEARS OLD	Create a Postcard			Star Wars Saga - Tales from a Galaxy Far Far Away			Parachute Games			Disney Racers			Magic PlayFloor			Dance Party								

Symbol for activities that will be repeated during the cruise
 FOLD
 Fold along the dotted lines and take me with you so you don't miss any of the fun!
 FOLD
 IN THE SPOTLIGHT SERIES
 SOLVE IT SERIES
 JUMP UP! SERIES
 CREATE & INVENT SERIES
 OPEN HOUSE
 CLUBHOUSE SERIES
 STORYBOOK SERIES

BUENA VISTA THEATRE

Deck 4 & 5, Midship



DOLBY 3D

DOLBY 3D

8:30 am Duration: 1 hr 42 mins Rating: PG	10:45 am Duration: 1 hr 40 mins Rating: PG	1:00 pm Duration: 2 hrs 16 mins Rating: PG-13	6:00 pm & 8:15 pm Duration: 1 hr 42 mins Rating: PG	12:01 am Duration: 1 hr 49 mins Rating: PG-13
--	---	--	---	--

Character Appearances

MINNIE MOUSE

Deck 4, Balcony
9:00 am & 10:00 am
Lobby Atrium (V) - 7:30 pm

WOODY

Lobby Atrium (V)
9:15 am & 10:30 am

DONALD DUCK

Preludes - 9:15 am
Deck 4, Balcony - 4:15 pm

PRINCESS SOFIA

Deck 4, Balcony
9:30 am & 10:30 am

MICKEY MOUSE

Preludes - 9:45 am
Deck 4, Balcony
5:15 pm & 7:30 pm

STITCH

Preludes - 10:15 am

CHARACTER DANCE PARTY

Lobby Atrium - 12:15 pm

RAPUNZEL

Deck 4, Balcony - 2:30 pm

CINDERELLA

Lobby Atrium (P) - 2:30 pm

SNOW WHITE

Deck 4, Balcony - 3:15 pm

BELLE

Lobby Atrium (P) - 3:15 pm

CHIP & DALE

Lobby Atrium (V) - 4:30 pm

DAISY DUCK

Deck 4, Balcony - 4:45 pm

GOOFY

Lobby Atrium (V) - 5:00 pm

PLUTO

Lobby Atrium (V) - 5:30 pm

PRINCESS APPEARANCES

D Lounge - 7:30 pm

SEA YA REAL SOON

Lobby Atrium - 10:15 pm

(H) Hallway - (S) Starboard Side - (P) Port Side - (V) Vestibule
For details of daily Disney character appearances, refer to the character line on your Navigator Grid, or the digital character board in the Lobby Atrium.

YOUTH ACTIVITIES THEMED EXPERIENCES

CLUBHOUSE SERIES
focuses on movement and features content which appeals to younger children.

JUMP UP! SERIES
includes large group games & movement-oriented activities.

IN THE SPOTLIGHT SERIES
focuses on children's stage presence with lots of activities and enthusiasm.

STORYBOOK SERIES
is designed with a strong connection to the Disney classic stories.

CREATE & INVENT SERIES
will have a tactile focus allowing children to create and admire their work.

SOLVE IT! SERIES
are less active, but will challenge children with problem/solutions-based activities.

OPEN HOUSE

activities for families, adults and children of all ages to enjoy together.

SHIP DIRECTORY

YOUTH ACTIVITIES

DISNEY'S OCEANEER CLUB	DECK 5, MID	10:30 AM - 12:00 AM
DISNEY'S OCEANEER LAB	DECK 5, MID	9:00 AM - 12:00 AM
EDGE	DECK 13, MID	10:00 AM - 12:00 AM
VIBE	DECK 4, FWD	11:00 AM - 1:00 AM
IT'S A SMALL WORLD NURSERY	DECK 5, MID	9:00 AM - 12:00 AM

POOLS & MORE

* Children under 12 must have adult supervision in pool areas.

AQUADUCK	DECK 12, AFT	9:00 AM - 10:00 PM
DONALD'S POOL	DECK 11, MID	9:00 AM - 6:00 PM
		8:00 PM - 10:00 PM
FUNNEL PUDDLE	DECK 12, FWD	8:00 AM - 6:00 PM
MICKEY'S POOL	DECK 11, MID	8:30 AM - 10:00 PM
MICKEY'S SLIDE	DECK 11, MID	9:00 AM - 6:00 PM
NEMO'S REEF	DECK 11, MID	9:00 AM - 6:00 PM
QUIET COVE POOL (18+)	DECK 11, FWD	8:00 AM - 10:00 PM
SATELLITE FALLS (18+)	DECK 13, FWD	8:00 AM - 8:00 PM

Complimentary pool vests are available for children to use in the pools onboard.

RECREATION

GOLF/SPORTS SIMULATOR	DECK 13, AFT	9:00 AM - 6:00 PM
GOOFY GOLF	DECK 13, AFT	8:00 AM - 10:00 PM
GOOFY'S SPORTS DECK	DECK 13, AFT	12:00 AM - 10:00 AM
		1:00 PM - 6:00 PM
MIDSHIP DETECTIVE AGENCY	DECK 2 & 5, MID	8:00 AM - 11:00 PM
PORT ADVENTURES DESK	DECK 5, MID	
SENSES FITNESS CENTER (18+)	DECK 11, FWD	6:00 AM - 10:00 PM

GENERAL INFORMATION

BUENA VISTA THEATRE	DECK 4 & 5, MID	SHOWTIMES
DISNEY VACATION PLANNING CENTER	DECK 4, MID	9:00 AM - 12:00 PM
		2:00 PM - 10:00 PM
GUEST SERVICES	DECK 3, MID	24 HOURS
HAIRBRAIDING	DECK 11, MID	8:00 AM - 9:30 PM
MEDICAL HEALTH CENTER	DECK 1, FWD	9:30 AM - 11:00 AM
		4:30 PM - 7:00 PM
PORT & SHOPPING DESK	DECK 4, MID	
PRELUDES	DECK 3, FWD	5:30 PM - 9:00 PM
SENSES SPA AND SALON	DECK 11, FWD	8:00 AM - 10:00 PM
SHUTTERS PHOTO GALLERY	DECK 4, MID	10:00 AM - 11:30 PM
WALT DISNEY THEATRE	DECK 3 & 4, FWD	SHOWTIMES

SHOPPING

BIBBIDI BOBBIDI BOUTIQUE	DECK 5, MID	9:00 AM - 9:00 PM
MICKEY'S MAINSAIL	DECK 3, FWD	9:30 AM - 11:00 PM
SEA TREASURES	DECK 3, FWD	9:30 AM - 11:00 PM
QUACKS	DECK 11, MID	
VISTA GALLERY	DECK 4, MID	9:30 AM - 11:00 PM
WHITE CAPS	DECK 3, FWD	9:30 AM - 11:00 PM
WHOZITS & WHATZITS	DECK 11, MID	10:00 AM - 4:00 PM
		7:00 PM - 11:00 PM

IMPORTANT NUMBERS

Fire/Security: 7-3001
Medical Emergency: 7-3000
Health Center: 7-1923

DINNER MENU

Animator's Palate: Pacific Rim Cuisine
Enchanted Garden: Continental Market Cuisine
Royal Palace: French Dinner
Dining Times: 5:45 pm & 8:15 pm

DRINK OF THE DAY

High Tide (Alcoholic)
Princess Delight (Non Alcoholic)

WEATHER FORECAST

Today: Cloudy
High: 72 F/22 C
Tomorrow: Sunny
High: 68 F/16 C

Evening Attire: Cruise Casual

DINING & LOUNGES

BREAKFAST

CABANAS CONTINENTAL	DECK 11, AFT	7:00 AM - 7:30 AM
CABANAS	DECK 11, AFT	7:30 AM - 10:45 AM
ENCHANTED GARDEN	DECK 2, MID	9:00 AM - 12:00 PM
ROYAL PALACE	DECK 3, MID	8:00 AM - 9:30 AM

LUNCH

CABANAS	DECK 11, AFT	11:45 AM - 2:15 PM
FILLMORE'S FAVORITES	DECK 11, MID	10:30 AM - 6:00 PM
LUIGI'S PIZZA	DECK 11, MID	10:30 AM - 6:00 PM
ROYAL PALACE	DECK 3, MID	12:00 PM - 1:30 PM
TOW MATER'S GRILL	DECK 11, MID	10:30 AM - 6:00 PM

DINNER

ANIMATOR'S PALATE	DECK 3, AFT	5:45 PM & 8:15 PM
ENCHANTED GARDEN	DECK 2, MID	5:45 PM & 8:15 PM
PALO (18+) (RESERVATIONS REQ. & NOM. FEE APPLIES)	DECK 12, AFT	6:00 PM - 8:30 PM
REMY (18+) (RESERVATIONS REQ. & NOM. FEE APPLIES)	DECK 12, AFT	6:00 PM - 8:30 PM
ROYAL PALACE	DECK 3, MID	5:45 PM & 8:15 PM
TOW MATER'S GRILL	DECK 11, MID	6:00 PM - 11:00 PM

LATE NIGHT SNACKS

LUIGI'S PIZZA	DECK 11, MID	9:30 PM - 12:00 AM
---------------	--------------	--------------------

ADDED FEATURES

BEVERAGE STATION	DECK 11, MID	24 HOURS
EYE SCREAM	DECK 11, MID	10:30 AM - 12:00 AM
ROOM SERVICE	DIAL 0	CLOSES AT 1:30 AM
VANELLOPE'S SWEETS AND TREATS	DECK 11, AFT	12:00 PM - 10:30 PM

ENTERTAINMENT - LOUNGES - BARS

Adults must be 21 and older to consume alcoholic beverages.

BON VOYAGE	DECK 3, MID	9:00 AM - 11:00 PM
COVE BAR (18+)	DECK 11, FWD	10:00 AM - 10:30 PM
COVE CAFE (18+)	DECK 11, FWD	7:00 AM - 12:00 AM
CURRENTS (18+)	DECK 13, FWD	10:00 AM - 11:00 PM
D LOUNGE	DECK 4, MID	SHOWTIMES
DISTRICT LOUNGE (18+ AFTER 9:00 PM)	DECK 4, AFT	12:00 PM - 2:00 AM
EVOLUTION (18+)	DECK 4, AFT	9:30 PM - 12:00 AM
FROZONE TREATS	DECK 11, MID	10:00 AM - 6:00 PM
MERIDIAN (18+)	DECK 12, AFT	5:30 PM - 12:00 AM
OUTLOOK (18+)	DECK 14, MID	
PINK WINE AND CHAMPAGNE BAR (18+)	DECK 4, AFT	5:00 PM - 12:00 AM
PUB 687 (18+ AFTER 9:00 PM)	DECK 4, AFT	12:00 PM - 12:00 AM
SENSES JUICE BAR	DECK 11, FWD	6:00 AM - 10:00 PM
SKYLINE (18+)	DECK 4, AFT	5:30 PM - 12:00 AM
VISTA CAFE	DECK 4, MID	7:00 AM - 11:00 PM
WAVES	DECK 12, AFT	10:00 AM - 6:00 PM

Public Health Advisory: Consuming raw or under-cooked meats, poultry, seafood, shellfish, or eggs may increase your risk for food borne illness, especially if you have certain medical condition.



CHARACTER DANCE PARTY

Put your dancing shoes on and join some of your favorite Disney Friends in the Lobby Atrium, Deck 3, Midship for fun and dancing.
12:15 pm