

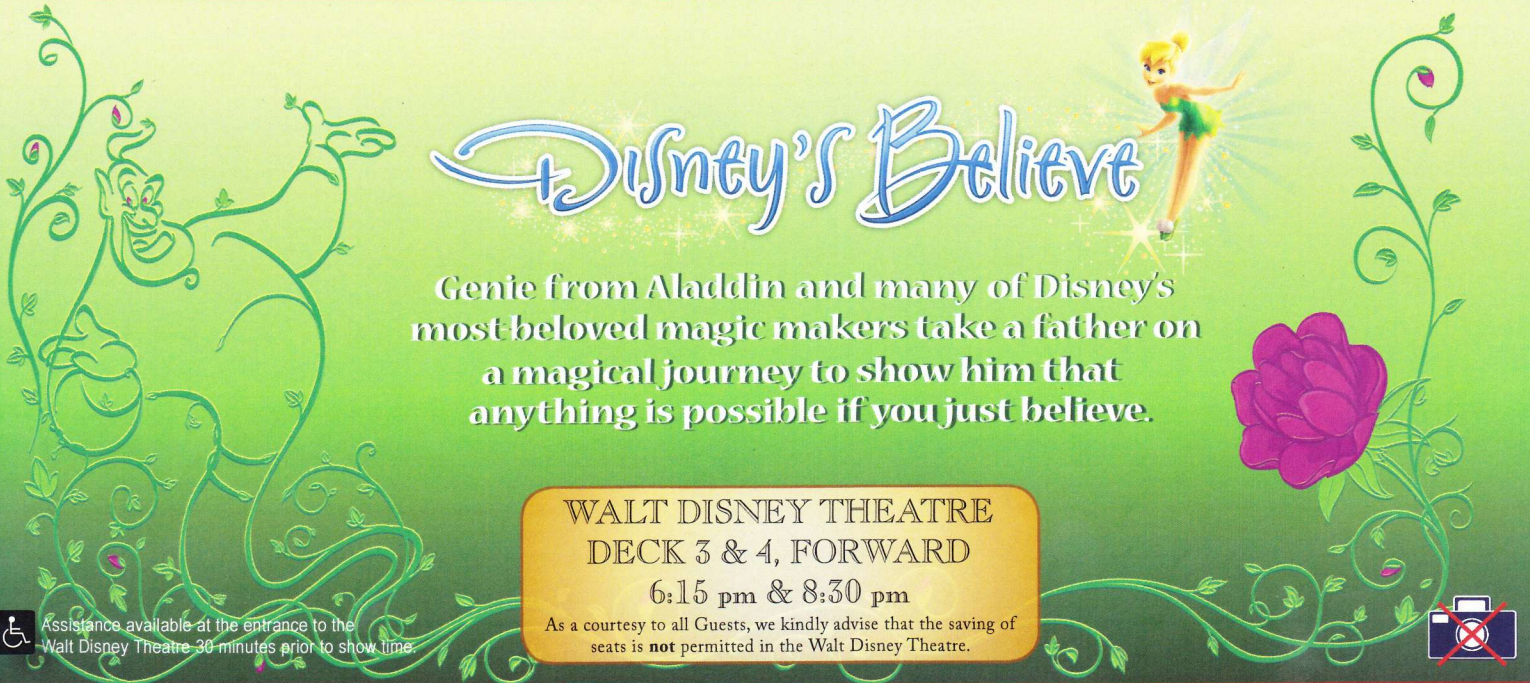
PERSONAL NAVIGATOR

Sunrise: 6:56 am Sunset: 7:33 pm
Evening Attire: Cruise Casual

Today: Partly Sunny High: 84°F/29°C
Tomorrow: Cloudy High: 88°F/31°C

THURSDAY, SEPTEMBER 3, 2015

DAY AT SEA




Disney's Believe

Genie from Aladdin and many of Disney's most beloved magic makers take a father on a magical journey to show him that anything is possible if you just believe.

WALT DISNEY THEATRE
DECK 3 & 4, FORWARD
6:15 pm & 8:30 pm

As a courtesy to all Guests, we kindly advise that the saving of seats is **not** permitted in the Walt Disney Theatre.

Assistance available at the entrance to the Walt Disney Theatre 30 minutes prior to show time.



Disney Dream Fun Facts

Tonnage: 129, 690
Height: 66.13 m (217 feet)
Length: 339.8 m (1114.7 feet)

Important Dates

Name Announcement: March 2009
Steel Cutting: March 2009
Keel Laying: August 2009
Delivery: December 2010

Did you know?

The Sorcerer Mickey Mouse on the Disney Dream's stern is about 14 feet long. Constructed of stainless steel and fiberglass, it weighs approximately 2,500 pounds.



SEA YA REAL SOON!

Mickey and Minnie along with the rest of the Walt Disney Characters invite you to join them in the ship's atrium for Sea Ya Real Soon. You won't want to miss this very special farewell presentation.

**Lobby Atrium,
Deck 3, Midship,
10:15 pm**

Don't Miss:

ESPN Dream Team Draft Day - Baseball (18+)
Pub 687, Deck 4, Aft - 11:00 am
Play ball! Join the "Commissioner" and engage in this interactive fantasy baseball draft unlike anything you've ever seen! Can YOU draft the greatest baseball team of all-time?

Jack-Jack's Incredible Diaper Dash
Lobby Atrium, Deck 3, Midship - 11:30 am
Calling all baby cruisers! It's time to take to the mat to see who's the fastest crawler of the seven seas! Register your baby 15 minutes prior to the big race.

Disney Animation: Creating a Character
D Lounge, Deck 4, Midship - 1:15 pm
Go behind the scenes at Walt Disney Animation Studios as Walt Disney himself talks about his most famous characters, then learn the basic techniques of drawing your favorite pals in this fun and interesting enrichment program.

80's Music Challenge (18+)
Evolution, Deck 4, Aft - 10:15 pm
"Moon Walk" back to the 80's as we put your musical knowledge of the decade to the test.

Debarb Talk Broadcast

Important information regarding disembarkation procedures for your journey home will be covered in this debarkation briefing. The broadcast will be shown continuously on channel 5 of your stateroom television for your convenience. Please place your luggage outside your stateroom between 8:30 - 10:30 pm.

Thank you in advance for completing your comment card.



Visit The Onboard Sales Desk Early Today

Please visit the Onboard Sales Desk, Deck 4, Midship, as early as possible today. The last day of the cruise tends to get busy in the evening, and we want to be sure you have the opportunity to save 10% on your next cruise, receive up to a \$200 onboard credit, and pay a reduced deposit!

DINNER MENU

Animator's Palate: Pacific Rim Crusine
Enchanted Garden: Continental Market
Royal Palace: French Dinner

DRINK OF THE DAY

High Tide (Alcoholic)
Princess Delight (Non Alcoholic)

IMPORTANT NUMBERS

Fire/Security: 7-3001
Medical Emergency: 7-3000
Health Center: 7-1923

ADULT ACTIVITY HIGHLIGHTS

SENSES SPA FITNESS CLASSES & SEMINARS

Wake Up & Stretch Class - Senses Fitness Center - 7:00 am
Fab Abs - Senses Fitness Center - 7:30 am
Body Sculpt Boot Camp (Nom. Fee) - Senses Fitness Center - 8:00 am
Group Cycling (Sign-Up Required) - Senses Fitness Center - 9:00 am
Introduction to Acupuncture - Senses Fitness Center - 9:30 am
Yoga - Senses Fitness Center - 10:00 am
Acupuncture Pain Relief - Senses Fitness Center - 10:15 am
Detox for Health & Weight Loss - Senses Fitness Center - 11:00 am
Good Feet: Relieving Back Pain - Senses Fitness Center - 2:00 pm



TASTING CLASSES

Chocolate & Liquor Tasting (21+) - Pink: Wine and Champagne Bar - 11:15 am
Stem to Stern Wine Tasting (21+) - Pink: Wine and Champagne Bar - 1:00 pm
Martini Tasting (21+) - Meridian - 2:00 pm
Mixology (21+) - Skyline - 2:00 pm; Meridian - 4:00 pm
Mojito & Caipirinha Tasting (21+) - District Lounge - 3:00 pm
 Please make reservations for tastings at Guest Services for a nominal fee. Tasting Seminars are only for Guests 21 and older.

1820 SOCIETY: LUNCH

Royal Palace, Deck 3, Midship - 12:30 pm
 Get to know your fellow Society members over lunch.

1820 SOCIETY: JENGA CHALLENGE

Pub 687, Deck 4, Aft - 4:30 pm
 Have some fun with this classic game.

1820 SOCIETY: FAREWELL

Evolution, Deck 4, Aft - 9:45 pm
 Join your Cruise Staff and your new friends in this last gathering for some fun.

MOVIE QUOTES TRIVIA

Pub 687, Deck 4, Aft - 1:15 pm
 "Life is like a box of Chocolates" Know the movie? Join your Cruise Staff and test your Movie Quote knowledge.

90'S MUSIC TRIVIA

Pub 687, Deck 4, Aft - 2:15 pm
 "If you Wannabe" the winner, then join us as we test your 90's music knowledge.

ANYONE CAN COOK - LOBSTER RAVIOLI

D Lounge, Deck 4, Midship - 3:00 pm
 From our galley to yours. Join our chefs as they show you how to prepare delicious dishes. Today's Menu - Lobster Ravioli.



FUN FOR ALL AGES HIGHLIGHTS

PLAYMATION (6+)

D Lounge, Deck 4, Midship - 9:15 am
 The Avengers Need You: The battle begins October 4, but recruits can reserve their gear onboard today!



\$10,000 MEGA JACKPOT BINGO

Bingo Pre-Sales start at 10:45 am
Evolution, Deck 4, Aft - 11:15 am
 It's Big, it's Massive, it's Supersized! It's \$10,000 MEGA Jackpot Bingo! Take home \$10,000 if you can cover your card in 46 numbers or less. If not, we carry on to play for the biggest cash prize of the session, plus today's Disney Vacation Club sponsored raffle includes a \$100 Onboard Credit and prize-packs.



JACK-JACK'S INCREDIBLE DIAPER DASH

Lobby Atrium, Deck 3, Midship - 11:30 am
 Calling all baby cruisers! It's time to take to the mat to see who's the fastest crawler of the seven seas! Register your baby 15 minutes prior to the big race.



DISNEY VACATION CLUB GROUP PREVIEW

D Lounge, Deck 4, Midship - 12:15 pm
 Want to learn more about taking magical vacations year after year? Please see a Disney Vacation Club representative on Deck 4, Midship, or call 7-2805 from your stateroom phone for more information about our interactive group presentation.



DISNEY ANIMATION: CREATING A CHARACTER

D Lounge, Deck 4, Midship - 1:15 pm
 Go behind the scenes at Walt Disney Animation Studios as Walt Disney himself talks about his most famous characters, then learn the basic techniques of drawing your favorite pals in this fun and interesting enrichment program.



MICKEY 200

Evolution, Deck 4, Aft - 2:30 pm
 Don't eat your vegetables... race them in this wild and wacky charge to the finish line. May the best veggie win! (Limited Availability)



FINAL JACKPOT BINGO

Bingo Pre-Sales start at 3:45 pm
D Lounge, Deck 4, Midship - 4:15 pm
 The snowball jackpot MUST BE WON at this final session! Beat the line and get your cards early. Who will be the lucky winner? It could be you! Pre-Sales start 30 minutes prior to game.



SUNSHINE TRIO - UNPLUGGED

District Lounge, Deck 4, Aft - 5:15 pm & 7:30 pm
 Join Sunshine Trio as they perform an acoustic set for your listening pleasure.



OFFICER PIN TRADING

Preludes, Deck 3, Forward - 7:15 pm
 Come trade pins with the Officers of the Disney Dream.

CLUB NEW YEAR'S EVE

Evolution, Deck 4, Aft - 7:30 pm
 Club New Year's Eve, you won't want to miss this journey of musical genres in history and performances by some of your favorite Cruise Staff. Bring your family and help us count down to a brand new year!



FAMILY DREAM QUEST

D Lounge, Deck 4, Midship - 10:15 pm
 Enjoy the wildest and wackiest scavenger team event on the seven seas!

FAMILY SUPERSTAR KARAOKE

D Lounge, Deck 4, Midship - 10:45 pm
 Join your Cruise Staff in D Lounge tonight and sing along to your favorite song - fun for everyone.



YOUTH ACTIVITIES HIGHLIGHTS

Dine & Play

A convenience for families dining at 8:15 pm, our Youth Activities counselors will be available at 9:15 pm at the entrance of Royal Palace, Enchanted Garden and Animator's Palate dining rooms to bring registered children to join the fun in the Youth Activities areas.



Deck 5, Midship (7-1440)
(3 - 12 years old)

10:30 am - 11:30 pm

TOY STORY BOOT CAMP

11:00 am

Join Corporal Green in our own version of boot camp as we learn how to have fun - The Toy Story way!

DRESS UP FUN

2:30 pm

Come join us and dress up as your favorite Princess, Superhero or Pirate!



Deck 5, Midship (7-1445)
(3 - 12 years old)

9:00 am - 12:00 am

SPORTS DECK FUN

10:00 am

Take over the Sports Deck with some fun and friendly competition.

STITCH'S FINAL FAREWELL

7:30 pm

We'll get a very special guest as we celebrate the grand finale to this cruise!



Deck 13, Midship (7-9743)
(11 - 14 years old)

10:00 am - 12:00 am

SUPER SLOPPY SCIENCE

11:30 am

Join Professor Make-O-Mess in some of the most extreme experiments you will ever see in the world of Super Sloppy Science!

THAT'S HILARIOUS

10:15 pm

Ever wanted to show off your comedy skills? Then be a part of the cast for the crazy improv show "That's Hilarious" and put on a live show for your friends.



Entrance on Deck 4, Forward (7-9417)
(14 - 17 years old)

11:00 am - 1:00 am

ZOMBIFIED

12:15 pm

A big movie producer is looking for zombies to help him film the finale to his latest masterpiece, Zombified.

ZOMBIFIED PREMIERE

10:30 pm

It's premiere night for the latest zombie movie starring YOU!

BUENA VISTA THEATRE

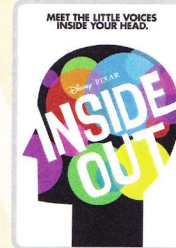
Deck 4 & 5, Midship
Today's Movies

DOLBY 3D



8:30 am
Duration:
1 hr 48 mins
Rating: PG

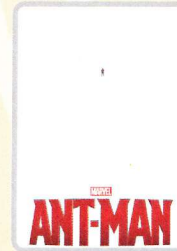
DOLBY 3D



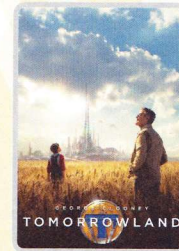
11:15 am
Duration:
1 hr 42 mins
Rating: PG



1:45 pm
Duration:
1 hr 57 mins
Rating: PG-13



5:15 pm & 8:15 pm
Duration: 1 hr 57 mins
Rating: PG-13



11:00 pm
Duration: 2 hrs 10 mins
Rating: PG

Disney CRUISE LINE ANYONE CAN COOK (Culinary Series)

FAMILY CULINARY SERIES

From our galley to yours.
Join our chefs as they
show you how to prepare
delicious dishes.

Today's Menu
Apple Strudel

D Lounge,
Deck 4, Midship,
10:30 am



ADULT VARIETY ACT

Repeat Show:
Featuring the
Comedy & Ventriloquism
of Taylor Mason,
as he entertains you in this
adult exclusive show.

Evolution (18+),
Deck 4, Aft,
10:45 pm

YOUTH ACTIVITIES OPEN HOUSE

Open House is an opportunity for all to come and participate in a variety of exciting activities and free time in the Oceaneer Club, Oceaneer Lab, Edge and Vibe throughout the cruise.

During these times secured programming will still be offered in the other venues for those looking to check their children into care.

Disney's Oceaneer Club: 9:00 am - 10:30 am & 11:30 pm - 12:00 am

Disney's Oceaneer Lab: 4:00 pm - 5:30 pm

Edge: 9:00 am - 10:00 am & 5:30 pm - 7:00 pm

Vibe: 10:00 am - 11:00 am & 7:30 pm - 8:45 pm

MORE TO ENJOY WHILE ONBOARD

BOOK ONBOARD AND SAVE!

Explore all the itineraries Disney Cruise Line offers - from the Caribbean and Bahamas to Alaska or Europe. Save when you book your next family adventure onboard! Visit the Onboard Sales Desk for more information.



DISNEY VACATION CLUB® GROUP PREVIEW

Want to learn more about taking magical vacations year after year? Please see a Disney Vacation Club representative on Deck 4, Midship, or call 7-2805 from your stateroom phone for more information about our interactive group presentation.



STAY CONNECTED WITH CELLULAR SERVICE

Cell phone and wireless PDA service is available in Guest staterooms through most plans. Pricing varies depending upon your wireless provider and usually includes International roaming rates.

EXPRESS WALK-OFF

This option allows you to take your luggage off the ship at your leisure once the ship has been cleared by the local authorities. You won't need to wait for your luggage to enter the terminal and there is no need to claim it inside the terminal building. Please note that no assistance with luggage is provided for this option.

MIDSHIP DETECTIVE AGENCY

Use your detective know-how and our special detective "badge" to search the ship and catch your criminal! Deck 5, Midship Kiosks.

Connect@Sea

We are now offering a NEW and improved Internet service to stay connected on your cruise like no other in the industry! Internet packages range from \$0.25 per MB - \$89.00 (1000 MB package). For more information contact your Connect@Sea Expert or Guest Services onboard.

FREE ON DEMAND TV

Watch Disney movies, Hollywood features, and even captioned content, plus much more "On Demand" for FREE in the comfort of your stateroom! Bookmark your movie and come back to watch it later. Press MENU on your stateroom television remote control and follow the prompts.

SHOPPING

MIDNIGHT RELEASE OF NEW STAR WARS MERCHANDISE!

The Force has awoken onboard the Disney Dream Cruise Ship! Head to Mickey's Mainsail on Deck 3, Forward, tonight for the special midnight release of the new "Star Wars: Episode VII - The Force Awakens" merchandise that the whole family will love. Where will your alliance fall?

SOPHIA FIORI DISNEY INSPIRED JEWELRY

Don't miss your final chance to take home one of the sparkling diamond jewelry pieces from the Sophia Fiori Disney inspired diamond jewelry by visiting White Caps today! Deck 3, Forward.

CAPTAIN'S SIGNING

Come to White Caps at 12:15 pm and 7:15 pm to have your Disney Dream merchandise signed by the Master of the Disney Dream, Captain Guus. Stunning replica ships are available in Sea Treasures, Deck 3, Forward. Beautiful Disney Cruise Line® prints are available in the Vista Gallery, Deck 4, Midship.

OFFICER PIN TRADING

Check out the Disney Cruise Line pins when you visit Mickey's Mainsail. Later, join the Officers of the Disney Dream Cruise Ship for pin trading fun at 7:15 pm in Preludes. Deck 3, Forward.

THE DISNEY PARKS | PANDORA JEWELRY COLLECTION

The Disney Parks | PANDORA Jewelry Collection features hand-finished .925 sterling silver and 14K gold charms inspired by some of the most beloved Disney Characters and icons, such as the Disney Cruise Line logo. Stop by White Caps and discover these beautiful charms, such as the new Disney Cruise Line heart charm in sterling silver with 3 bezel-set red cubic zirconia and dark blue enamel or the new Disney Cruise Line anchor dangle charm with 14K gold Mickey silhouette and dark blue enamel. Deck 3, Forward.

STYLISH WATCHES ONBOARD

Whether you need a tool for strict timekeeping or a fun fashion accessory, visit White Caps and browse the wide selection of stylish watches available including popular brands such as Skagen, Tissot, and Shinola. Deck 3, Forward.



SALON TASTER SPECIAL

Choose from a scalp massage, European facial, hand treatment, sunglow make-over, hair treatment, eye-collagen treatment, foot and ankle massage and neck and shoulder massage.

Three for \$99, five for \$119, and eight for \$139.

Senses Spa & Salon, Deck 11, Forward, Ext. 7-1465

DISNEY INSPIRED DIAMOND COLLECTION

by SOPHIA FIORI DIAMONDS

ONLY AVAILABLE ONBOARD



PROFESSIONAL PORTRAITS TONIGHT!

Grand Staircase - Groups Accommodated

5:15 pm - 6:30 pm
7:15 pm - 8:30 pm

Visit Shutters for everything you need to capture your cruise photo memories. Now is the time to save on cameras and accessories with the best deals of the year! Extra special savings and gifts available with purchase, all at tax and duty free prices.

IMPORTANT INFORMATION

Security Notice

All Guests (including children) who wish to disembark the ship are required to present their Key to the World card at the gangway. A photo ID is also required for those Guests who are 18 years of age or older. Guests under the age of 18 are required to have a parent, guardian or other responsible adult sign an authorization form at the Guest Service Desk if they wish to go ashore unaccompanied or with any adult from another stateroom.

Inclement Weather

For the safety of all Guests, outdoor events may be changed due to unforeseen weather conditions.

Cold and Flu Reminder

Please wash hands frequently and thoroughly, particularly before meals. Contact the Health Center by dialing 7-1923, should anyone in your party become ill.

Corridor Quiet Hours

As a courtesy to all our Guests, please recognize quiet hallway hours from 10:00 pm - 8:00 am.

Sunscreen/Insect Repellent Advisory

Use sunscreen first and protect against mosquito bites and related illnesses by applying insect repellent on top of sunscreen when going ashore. Insect repellent is available for purchase in White Caps.

Environmental Message

With Disney's commitment to the environment, please refrain from throwing anything over the ship's side. Thank you!

No Reserved Seats Policy

As a courtesy to all our Guests, we kindly advise that the saving of seats is not permitted in the Walt Disney Theatre, and the saving of the sun loungers is not permitted on Deck 11, 12 and 13. Items left unattended will be returned to lost and found at Guest Services, Deck 3, Midship.

Smoking

For the comfort of our guests the following areas are designated as Smoking areas:

- Deck 13, Forward, port side, by "Currents"
- Deck 12, Aft, port side outdoor area that is accessible through the Meridian Lounge
- Deck 4, Aft, port side, the outside Promenade Deck from 6:00 pm to 6:00 am only (all of Deck 4 is no smoking from 6:00 am to 6:00 pm).
- Smoking is prohibited inside all Guest staterooms and on stateroom verandahs. Guests found smoking in their staterooms or on their verandahs will be charged a \$250 stateroom recovery fee. Electronic cigarettes may only be used in designated smoking areas.

Walt Disney Theatre

Theatrical performances may use artificial fog, strobe lights, pyrotechnics and other special effects. For the safety of our performers and the comfort of those around you, the use of any photography, video recording devices or any electronic equipment is prohibited.

Verandah Safety

Please do not leave any combustible materials on your balcony when not present in your stateroom for safety reasons.

Morning	8:30	8:45	9:00	9:15	9:30	9:45	10:00	10:15	10:30	10:45	11:00	11:15	11:30	11:45	12:00	12:15	12:30	12:45	1:00	1:15	1:30						
FUNNEL VISION	Cars (G) Funnel Vision														Star Wars Rebels: Disney Channel XD (G) Funnel Vision	Disney Movie Challenge Poolside Funnel Vision											
BUENA VISTA THEATRE	Big Hero 6 (PG) DOLBY 3D Duration: 1 Hour 48 Minutes											Inside Out (PG) Duration: 1 Hour 42 Minutes															
CHARACTERS	Minnie Deck 4, Balcony		Woody Lobby Atrium (V)		Dopey Deck 4, Balcony		Minnie Deck 4, Balcony		Woody Lobby Atrium (V)		Dopey Deck 4, Balcony		Character Dance Party Lobby Atrium														
FUN FOR ALL AGES	Disney Junior D Lounge		Morning Walk Deck 4, Portside		PLAYMATION D Lounge (6+)		Making of the Dream Evolution		Bingo Pre-Sales Evolution		\$10,000 Mega Jackpot Evolution		Captain's Signing White Caps		Disney Movie Challenge Poolside Deck 11 Stage					Disney Animation Creating a Character D Lounge							
ADULTS	Friends of Bill W. Outlook		Group Cycling Senses Fitness Center		Introduction to Acupuncture Senses Fitness Center		Yoga Senses Fitness Center		Dream Team Draft Baseball Pub 687		D Lounge - Group Preview										Movie Quotes Trivia Pub 687						
VIBE 14-17 YEARS OLD	Art of The Theme Show Tour Meridian											Crafts: Memory Pages Pub 687		Cruise Staff Lunch Royal Palace										Wine Tasting (21+) Pink Wine and Champagne Bar			
EDGE 11-14 YEARS OLD	Youth Activities Open House											Wii Challenge		Bingo		Super Sloppy Science		Ice Cream Social									
OCEANEER LAB 3-12 YEARS OLD	Game Challenge											Sports Deck Fun										Get the Hook					
OCEANEER CLUB 3-12 YEARS OLD	Youth Activities Open House											Super Sloppy Science		Stitch's Adventure Squad		Lunch										Mickey's Puzzle Playtime	
												Little Einstein's Adventure		Toy Story Boot Camp													

Afternoon	1:45	2:00	2:15	2:30	2:45	3:00	3:15	3:30	3:45	4:00	4:15	4:30	4:45	5:00	5:15	5:30	5:45	6:00	6:15	6:30	6:45	
FUNNEL VISION	Pixar Short Films (G) Funnel Vision											The Jungle Book (G) Funnel Vision				Brave (PG) Funnel Vision						
BUENA VISTA THEATRE	Ant-Man (PG-13) DOLBY 3D Duration: 1 Hour 57 Minutes											Ant-Man (PG-13) Duration: 1 Hour 57 Minutes										
CHARACTERS	Belle Lobby Atrium (P)		Cinderella Lobby Atrium (P)		Snow White Lobby Atrium (P)		Donald Deck 4, Balcony		Daisy Deck 4, Balcony		Mickey Mouse Deck 4, Balcony		Pluto Lobby Atrium (V)									
FUN FOR ALL AGES	Towel Folding D Lounge		Mickey 2013 Evolution (Limited Availability)		Bingo Pre-Sales D Lounge		Final Jackpot BINGO D Lounge		Live Music with Midtown Lobby Atrium		Sunshine Trio - Unplugged District Lounge		Disney's Believe Walt Disney Theatre									
ADULTS	90's Music Trivia Pub 687		Relieving Back Pain Senses Fitness Center		Disney Central Doc ANYONE CAN COOK D Lounge - Lobster Ravioli		Mixology (21+) Meridian		1820 Society: Jenga Challenge Pub 687		Ultimate Disney Trivia Pub 687		Singles' Mingle Cove Cafe									
VIBE 14-17 YEARS OLD	Zombified		GOTCHA		Sun Deck Fun		Smoothie Time		Scavenger Hunt		That's Hilarious		Game Challenge		Karaoke							
EDGE 11-14 YEARS OLD	Sports Deck Fun		Scavenger Hunt		Chillin' in Edge		Game Challenge		Tween Choice		Youth Activities Open House											
OCEANEER LAB 3-12 YEARS OLD	Anyone Can Cook		Disney Animation: Creating a Character		Youth Activities Open House		Dinner										Magic PlayFloor					
OCEANEER CLUB 3-12 YEARS OLD	Magic PlayFloor		Dress Up Fun		Cruisin' with Crush		Aloha Luau		Once Upon a Time												Magic PlayFloor	

Evening	7:00	7:15	7:30	7:45	8:00	8:15	8:30	8:45	9:00	9:15	9:30	9:45	10:00	10:15	10:30	10:45	11:00	11:15	11:30	11:45	12:00			
FUNNEL VISION	Cinderella (Classic) (G) Funnel Vision											The Princess and the Frog (G) Funnel Vision				Teen Beach 2 (TV-G) Funnel Vision								
BUENA VISTA THEATRE	Ant-Man (PG-13) Duration: 1 Hour 57 Minutes											Tomorrowland (PG) Duration: 2 Hours 10 Minutes												
CHARACTERS	Mickey Deck 4, Balcony		Minnie Mouse Lobby Atrium (V)		Princess Appearances D Lounge										SEA YA! REAL SOON! Lobby Atrium									
FUN FOR ALL AGES	Captain's Signing White Caps		Disney Trivia D Lounge		Disney's Believe Walt Disney Theatre		Club D Lounge		Family Dream Quest D Lounge		Live Piano with Tom Scott Lobby Atrium													
ADULTS	Olga Altukhova Live Pink Wine and Champagne Bar		Sunshine Trio - Unplugged District Lounge		Tribute to Michael Jackson with Sunshine Trio Evolution		Live Piano with Tom Scott District Lounge		The Comedy and Ventriloquism of TAYLOR MASON Evolution		Cruise Staff DJ District Lounge													
VIBE 14-17 YEARS OLD	Karaoke		Youth Activities Open House		Gender Wars		GOTCHA		Zombified Premiere		Mix and Match													
EDGE 11-14 YEARS OLD	Cards Tournament		How Well Do You Know Your Counselor?		Game Challenge		Bring It!		That's Hilarious		Gender Wars		Final Farewell											
OCEANEER LAB 3-12 YEARS OLD	Scavenger Hunt		Stitch's Final Farewell		Monster's Inc Open "Mike" Night		Super Sloppy Science		Video Game Challenge		Glow Jam		GAGA Ball											
OCEANEER CLUB 3-12 YEARS OLD	Journey to Neverland		Memory Wall		Magic Show		Scavenger Hunt		Game Challenge		Magic PlayFloor		Open House											

Symbol for activities that will be repeated during the cruise

FOLD

Fold along the dotted lines and take me with you so you don't miss any of the fun!

FOLD

IN THE SPOTLIGHT SERIES

JUMP UP! SERIES

CREATE & INVENT SERIES

CLUBHOUSE SERIES

STORYBOOK SERIES

OPEN HOUSE

THURSDAY, SEPTEMBER 3, 2015 - DAY AT SEA

BUENA VISTA THEATRE

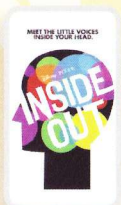
Deck 4 & 5, Midship

DOLBY 3D



8:30 am
Duration:
1 hr 48 mins
Rating: PG

DOLBY 3D



11:15 am
Duration:
1 hr 42 mins
Rating: PG



1:45 pm
Duration:
1 hr 57 mins
Rating: PG-13



5:15 pm & 8:15 pm
Duration:
1 hr 57 mins
Rating: PG-13



11:00 pm
Duration:
2 hrs 10 mins
Rating: PG

Character Appearances

PRINCESS MINNIE
Deck 4, Balcony
9:00 am & 10:00 am

WOODY
Lobby Atrium (V)
9:15 am & 10:15 am

DONALD DUCK
Preludes - 9:15 am
Deck 4, Balcony - 4:15 pm

DOPEY
Deck 4, Balcony
9:30 am & 10:30 am

MICKEY MOUSE
Preludes - 9:45 am
Deck 4, Balcony
5:15 pm & 7:15 pm

STITCH
Preludes - 10:15 am
Deck 4, Balcony - 3:15 pm

CHARACTER DANCE PARTY
Lobby Atrium - 12:15 pm

BELLE
Lobby Atrium (P) - 2:30 pm

CAPTAIN HOOK & MR SMEE
Deck 4, Balcony - 2:45 pm

CINDERELLA
Lobby Atrium (P) - 3:00 pm

SNOW WHITE
Lobby Atrium (P) - 3:30 pm

RAPUNZEL
Lobby Atrium (P) - 4:00 pm

CHIP & DALE
Lobby Atrium (V) - 4:30 pm

DAISY DUCK
Deck 4, Balcony - 4:45 pm

GOOFY
Lobby Atrium (V) - 5:00 pm

PLUTO
Lobby Atrium (V) - 5:30 pm

MINNIE MOUSE
Lobby Atrium (V) - 7:30 pm

PRINCESS APPEARANCES
D Lounge - 7:30 pm

SEA YA REAL SOON
Lobby Atrium - 10:15 pm

(H) Hallway - (S) Starboard Side - (P) Port Side - (V) Vestibule
For details of daily Disney character appearances, refer to the character line on your Navigator Grid, or the digital character board in the Lobby Atrium.

YOUTH ACTIVITIES THEMED EXPERIENCES

CLUBHOUSE SERIES
focuses on movement and features content which appeals to younger children.

STORYBOOK SERIES
is designed with a strong connection to the Disney classic stories.

JUMP UP! SERIES
includes large group games & movement-oriented activities.

CREATE & INVENT SERIES
will have a tactile focus allowing children to create and admire their work.

OPEN HOUSE

activities for families, adults and children of all ages to enjoy together.

IN THE SPOTLIGHT SERIES
focuses on children's stage presence with lots of activities and enthusiasm.

SOLVE IT! SERIES
are less active, but will challenge children with problem/solutions-based activities.

SHIP DIRECTORY

YOUTH ACTIVITIES

DISNEY'S OCEANEER CLUB	DECK 5, MID	10:30 AM - 11:30 PM
DISNEY'S OCEANEER LAB	DECK 5, MID	9:00 AM - 12:00 AM
EDGE	DECK 13, MID	10:00 AM - 12:00 AM
VIBE	DECK 4, FWD	11:00 PM - 1:00 AM
IT'S A SMALL WORLD NURSERY	DECK 5, MID	9:00 AM - 12:00 AM

POOLS & MORE

<i>* Children under 12 must have adult supervision in pool areas.</i>		
AQUADUCK	DECK 12, AFT	9:00 AM - 11:00 PM
DONALD'S POOL	DECK 11, MID	9:00 AM - 6:00 PM
		8:00 PM - 10:00 PM
MICKEY'S POOL	DECK 11, MID	8:30 AM - 10:30 PM
MICKEY'S SLIDE	DECK 11, MID	9:00 AM - 6:00 PM
NEMO'S REEF	DECK 11, MID	9:00 AM - 6:00 PM
QUIET COVE POOL (18+)	DECK 11, FWD	8:00 AM - 10:00 PM

Complimentary pool vests are available for children to use in the pools onboard.
Located on the pool deck.

RECREATION

GOLF/SPORTS SIMULATOR	DECK 13, AFT	9:00 AM - 6:00 PM
GOOFY GOLF	DECK 13, AFT	8:00 AM - 10:00 PM
GOOFY'S SPORTS DECK	DECK 13, AFT	12:00 AM - 10:00 AM
		1:00 PM - 6:00 PM
MIDSHIP DETECTIVE AGENCY	DECK 5, MID	8:00 AM - 11:00 PM
PORT ADVENTURES DESK	DECK 5, MID	9:00 AM - 10:00 AM
SENSES FITNESS CENTER (18+)	DECK 11, FWD	6:00 AM - 10:00 PM

GENERAL INFORMATION

ARR-CADE	DECK 11, AFT	24 HOURS
BUENA VISTA THEATRE	DECK 4 & 5, MID	SHOWTIMES
DISNEY VACATION CLUB	DECK 4, MID	9:00 AM - 11:00 AM
		1:30 PM - 10:00 PM
GUEST SERVICES	DECK 3, MID	24 HOURS
HAIRBRAIDING	DECK 11, MID	8:00 AM - 9:30 PM
MEDICAL HEALTH CENTER	DECK 1, FWD	9:30 AM - 11:00 AM
		4:30 PM - 7:00 PM
ONBOARD SALES DESK	DECK 4, MID	9:00 AM - 12:00 PM
		2:00 PM - 6:00 PM
		7:15 PM - 10:00 PM
PORT & SHOPPING DESK	DECK 4, MID	
PRELUDES	DECK 3, FWD	5:45 PM - 6:30 PM
		8:00 PM - 8:45 PM
SENSES SPA AND SALON	DECK 11, FWD	8:00 AM - 10:00 PM

SHOPPING

MICKEY'S MAINSAIL	DECK 3, FWD	9:30 AM - 10:00 PM
		12:00 AM - 2:00 AM
SEA TREASURES	DECK 3, FWD	9:30 AM - 10:00 PM
		12:00 AM - 2:00 AM
QUACKS	DECK 11, MID	
VISTA GALLERY	DECK 4, MID	10:00 AM - 11:00 PM
WHITE CAPS	DECK 3, FWD	9:30 AM - 10:00 PM
		12:00 AM - 2:00 AM
WHOZITS & WHATZITS	DECK 11, MID	10:00 AM - 4:00 PM
		7:00 PM - 10:00 PM

IMPORTANT NUMBERS

Fire/Security: 7-3001
Medical Emergency: 7-3000
Health Center: 7-1923

DINNER MENU

Animator's Palate: Pacific Rim Cuisine
Enchanted Garden: Continental Market Cuisine
Royal Palace: French Dinner

Dining Times: 5:45 pm & 8:15 pm

DRINK OF THE DAY

High Tide (Alcoholic)
Princess Delight (Non Alcoholic)

WEATHER FORECAST

Today: Partly Sunny
High: 84°F/29°C
Tomorrow: Cloudy
High: 88°F/31°C

Evening Attire: Cruise Casual

DINING & LOUNGES

BREAKFAST

CABANAS CONTINENTAL	DECK 11, AFT	7:00 AM - 7:30 AM
CABANAS	DECK 11, AFT	7:30 AM - 10:45 AM
ENCHANTED GARDEN	DECK 2, MID	9:00 AM - 12:00 PM
ROYAL PALACE	DECK 3, MID	8:00 AM - 9:30 AM

LUNCH

CABANAS	DECK 11, AFT	11:45 AM - 2:15 PM
FILLMORE'S FAVORITES	DECK 11, MID	10:30 AM - 6:00 PM
LUIGI'S PIZZA	DECK 11, MID	10:30 AM - 6:00 PM
ROYAL PALACE	DECK 3, MID	12:00 PM - 1:30 PM
TOW MATER'S GRILL	DECK 11, MID	10:30 AM - 6:00 PM

DINNER

ANIMATOR'S PALATE	DECK 3, AFT	5:45 PM & 8:15 PM
ENCHANTED GARDEN	DECK 2, MID	5:45 PM & 8:15 PM
PALO (18+) (RESERVATIONS REQ. & NOM. FEE APPLIES)	DECK 12, AFT	6:00 PM - 8:30 PM
REMY (18+) (RESERVATIONS REQ. & NOM. FEE APPLIES)	DECK 12, AFT	6:00 PM - 8:30 PM
ROYAL PALACE	DECK 3, MID	5:45 PM & 8:15 PM
TOW MATER'S GRILL	DECK 11, MID	6:00 PM - 11:00 PM

LATE NIGHT SNACKS

LUIGI'S PIZZA	DECK 11, MID	9:30 PM - 12:00 AM
---------------	--------------	--------------------

ADDED FEATURES

BEVERAGE STATION	DECK 11, MID	24 HOURS
EYE SCREAM	DECK 11, MID	10:30 AM - 12:00 AM
ROOM SERVICE	DIAL 0	CLOSES AT 1:30 AM

ENTERTAINMENT - LOUNGES - BARS

Adults must be 21 and older to consume alcoholic beverages.

BON VOYAGE	DECK 3, MID	9:00 AM - 11:00 PM
COVE BAR (18+)	DECK 11, FWD	10:00 AM - 10:30 PM
COVE CAFE (18+)	DECK 11, FWD	7:00 AM - 12:00 AM
CURRENTS (18+)	DECK 13, FWD	10:00 AM - 11:00 PM
D LOUNGE	DECK 4, MID	SHOWTIMES
DISTRICT LOUNGE (18+ AFTER 9:00 PM)	DECK 4, AFT	12:00 PM - 2:00 AM
EVOLUTION (18+)	DECK 4, AFT	9:30 PM - 12:00 AM
FROZONE TREATS	DECK 11, MID	10:00 AM - 10:00 PM
MERIDIAN (18+)	DECK 12, AFT	5:00 PM - 12:00 AM
OUTLOOK (18+)	DECK 14, MID	
PINK WINE AND CHAMPAGNE BAR (18+)	DECK 4, AFT	5:00 PM - 12:00 AM
PUB 687 (18+ AFTER 9:00 PM)	DECK 4, AFT	12:00 PM - 12:00 AM
SKYLINE (18+)	DECK 4, AFT	5:00 PM - 12:00 AM
VISTA CAFE	DECK 4, MID	7:00 AM - 11:00 PM
WAVES	DECK 12, AFT	10:00 AM - 6:00 PM

Public Health Advisory: Consuming raw or under-cooked meats, poultry, seafood, shellfish, or eggs may increase your risk for food borne illness, especially if you have certain medical condition.



CHARACTER DANCE PARTY

Put your dancing shoes on and join some of your favorite Disney Friends in the Lobby Atrium, Deck 3, Midship for fun and dancing.
12:15 pm