

PERSONAL NAVIGATOR



Sunrise: 6:33 a.m. Sunset: 7:54 p.m.
Evening Attire: Cruise Casual

Friday: Partly Cloudy High: 77°F/25°C
Saturday: Partly Cloudy High: 81°F/27°C

FRIDAY, AUGUST 2, 2013

DAY AT SEA

Disney's Believe



Genie from Aladdin and many of Disney's most beloved magic makers take a father on a magical journey to show him that anything is possible if you just believe.

WALT DISNEY THEATRE
DECK 3 & 4, FORWARD
3:00, 6:15 & 8:30 p.m.



Assistance available at the entrance to the Walt Disney Theatre 30 minutes prior to show time.

Disney Fantasy Fun Facts

While the cute baby elephant, Dumbo serves as a fantastic stern character, in real life he would have to gather 24,266 other adult male African elephants to match the weight of the Disney Fantasy.

A "light point" is shipbuilders' lingo for anything that's a light. There are approximately 80,000 light points on the Disney Fantasy – "double the normal number for a ship this size," according to Meyer Werft, the shipyard in Germany where the Disney Fantasy was built. The large number is the result of Disney's flair for theatrical experiences – accomplished primarily with LEDs and other "environmentally friendly" lighting.

Looking upward in the ship's Lobby Atrium brings Guest's eye-to-crystal with a glowing piece of "Art Nouveau-inspired jewelry" – a cascading chandelier flowing downward from a massive stained-glass flourish on the ceiling in peacock hues of greens and blues. The chandelier itself is more than 10 feet in diameter, a one-of-a-kind work of art evoking a peacock in stained glass and more than 60,000 clear Swarovski crystal beads.

Debark Talk Broadcast

Your Cruise Director, Clayton, presents important information including details regarding U.S. Customs and Border Protection procedures. Tune into Channel 5 of your stateroom TV.

SEA YA' REAL SOON!

Mickey and Minnie, along with the rest of the Walt Disney Characters, invite you to join them in the ship's Atrium. You won't want to miss this very special farewell meet and greet.

Bring your cameras!
Lobby Atrium,
Deck 3, Midship,
4:30 & 10:15 p.m.

Don't Miss:

The Disney Fantasy's Whistle

Will be played after today's noon announcement

The Disney Fantasy's whistle, a prominent element of the "Sailing Away" deck party at the start of the cruise, is quite the musical talent. It's able to perform not just the first musical line of "When You Wish Upon a Star" but also the second line of the song ("makes no difference who you are") plus several measures of "Yo Ho (A Pirate's Life for Me)," "It's a Small World," "Be Our Guest," "Hi Diddle Dee Dee (An Actor's Life for Me)" and "A Dream is a Wish."

Jack-Jack's Incredible Diaper Dash

Lobby Atrium, Deck 3, Midship - 10:00 a.m.

Calling all baby cruisers! The Disney Fantasy's babies take to the mat to see who's the fastest crawler of the seven seas! Register your baby from 9:45 a.m. - 10:00 a.m.

Cruise Staff Farewell (18+)

The Tube, Deck 4, Aft - 11:15 p.m.

Join your Club Host, David, and the Cruise Staff team and see our version of the funniest skit on the high seas, "If I Were Not Upon The Sea."



Visit The Future Cruise Desk Early Today

Please visit the Future Cruise Desk, Deck 4, Midship, as early as possible today. The last day of the cruise tends to get busy in the evening, and we want to be sure you have the opportunity to save 10% on your next cruise, receive up to a \$200 onboard credit, and pay a reduced deposit! Tune to Channel 8 for details.

DINNER MENU

Animator's Palate: Sea Ya' Real Soon
Enchanted Garden: Sea Ya' Real Soon
Royal Court: Sea Ya' Real Soon

DRINK OF THE DAY

High Tide (Alcoholic)
Passion Cream Freeze (Non Alcoholic)

IMPORTANT NUMBERS

Fire/Security: 7-3001
Medical Emergency: 7-3000
Health Center: 7-1923

FUN FOR ALL AGES HIGHLIGHTS



WAKE UP WITH DISNEY JUNIOR *D Lounge, Deck 4, Midship - 9:00 a.m.*

What happens when you experience unlimited fun with your favorite Disney Junior shows? You get an exciting dance party designed especially for preschoolers ages seven and under.



JACK-JACK'S INCREDIBLE DIAPER DASH *Lobby Atrium, Deck 3, Midship - 10:00 a.m.*

Calling all baby cruisers! The Disney Fantasy's babies take to the mat to see who's the fastest crawler of the seven seas! Register your baby from 9:45 a.m. - 10:00 a.m.

DISNEY VACATION CLUB GROUP PREVIEW *The Tube, Deck 4, Aft - 12:30 p.m.*

Want to learn more about taking magical vacations year after year? Please see a Disney Vacation Club representative on Deck 4, Midship, or call 7-2805 from your stateroom phone for more information about our interactive group presentation.

MAGIC WORKSHOP

D Lounge, Deck 4, Midship - 12:45 p.m.

Kyle Knight and Mistie teach you the basics of magic in this fun family event.

PLAYHOUSE D LOUNGE

D Lounge, Deck 4, Midship - 5:15 p.m.

Calling our youngest of cruisers! Here is a special playtime that is just for you. Come meet new friends; and join in on the fun as your Cruise Staff team takes you through interactive activities made just for you!

JEWISH SABBATH

Outlook, Deck 14, Midship - 5:15 p.m.

A quiet space is reserved for those wishing to conduct their own service.

FAREWELL KARAOKE

D Lounge, Deck 4, Midship - 10:30 p.m.

Bring along the entire family for one more round of karaoke. This is your last opportunity to grab the mic and sing along to your favorite song.

ADULT ACTIVITY HIGHLIGHTS

SENSES SPA FITNESS CLASSES & SEMINARS

Yoga - Donald's Pool - 7:00 a.m.

Body Sculpt Boot Camp (Nom. Fee) - Senses Fitness Center - 9:00 a.m.

Back Pain Solutions - Senses Spa & Salon - 10:30 a.m.

Detox For Health and Weight Loss - Senses Spa & Salon - 11:00 a.m.

Arthritis Solutions - Outlook - 2:15 p.m.

Seminar: Improving Your Posture-Walk in Comfort - Senses Spa & Salon - 3:00 p.m.

Group Cycling - Senses Fitness Center - 4:00 p.m.

Fitness Frenzy (13-17, Nom. Fee) - Senses Fitness Center - 7:00 p.m.



TASTING CLASSES

Chocolate Tasting (21+) - Ooh La La (Nom. Fee, Pre Book) - 12:15 p.m.

Martini Tasting (21+) - Meridian (Nom. Fee, Pre Book) - 1:00 p.m.

Old World Wine Tasting (21+) - Ooh La La (Nom. Fee, Pre Book) - 1:45 p.m.

Mixology (21+) - Skyline (Nom. Fee, Pre Book) - 2:00 p.m. & 4:00 p.m.

Rum Tasting (21+) - Meridian (Nom. Fee, Pre Book) - 3:00 p.m.

Tequila & Margarita Tasting (21+) - Ooh La La (Nom. Fee, Pre Book) - 4:45 p.m.

Please make reservations for tastings at Guest Services for a nominal fee.

Tasting Seminars are only for Guests 21 and Older.

CLUB 18*21 - 2000'S MUSIC CHALLENGE
O'Gills Pub, Deck 4, Aft - 11:30 a.m.

CLUB 18*21 - LUNCH
Royal Court, Deck 3, Midship - 12:30 p.m.

CLUB 18*21 - MIXER
O'Gills Pub, Deck 4, Aft - 10:00 p.m.

KNOW IT ALL TRIVIA

O'Gills Pub, Deck 4, Aft - 2:30 p.m.

Join your Club Host, David, if you think you've got what it takes!

BATTLE OF THE SEXES

The Tube, Deck 4, Aft - 10:15 p.m.

Join us and find out who will dominate in this hilarious battle of the sexes.

CRUISE STAFF FAREWELL

The Tube, Deck 4, Aft - 11:15 p.m.

Join your Club Host, David, and the Cruise Staff team and see our version of the funniest skit on the high seas, "If I Were Not Upon The Sea."

COULD GO JACKPOT BINGO

D Lounge, Deck 4, Midship

Card Sales - 10:45 a.m.

Game Starts - 11:00 a.m.

Four CASH prizes to be won! The snowball jackpot continues to grow and could go at this morning's session.

FINAL JACKPOT BINGO

**Buena Vista Theatre,
Deck 4 & 5, Forward**

Card Sales - 4:00 p.m.

Game Starts - 4:30 pm

The snowball jackpot **MUST BE WON** at this final session! Who will be the lucky winner? An estimated prize fund approaching \$10,000.



YOUTH ACTIVITIES HIGHLIGHTS

DINE & PLAY

A convenience for families dining at 8:15 p.m., our Youth Activities Counselors will be available at 9:15 p.m. at the entrance of Royal Court, Enchanted Garden and Animator's Palate dining rooms to bring registered children to join the fun in the Youth Activity areas.



Deck 5, Midship (7-5864) 9:00 a.m. - 11:30 p.m.

OPEN HOUSE

8:00 - 9:00 a.m.

Your chance to see our toddler space, It's A Small World Nursery.



Deck 5, Midship (7-1440) (3-12 years old) 10:30 a.m. - 12:00 mid

LITTLE EINSTEIN'S ADVENTURE

9:45 a.m.

Your junior cruisers will have the time of their lives with this program inspired by their favorite show with fun activities guaranteed to make them feel like a little genius!

TOY STORY BOOT CAMP

7:15 p.m.

Join Corporal Green in our own version of boot camp as we learn how to have fun - The Toy Story way!



Deck 5, Midship (7-1445) (3-12 years old) 9:00 a.m. - 12:00 mid

DISNEY ANIMATION: CREATING A CHARACTER

10:00 a.m.

Go behind the scenes at Walt Disney Animation Studios as Walt Disney himself talks about his most famous characters, then learn the basic techniques of drawing Mickey and Donald in this fun and interesting enrichment program.

STITCH'S FINAL FAREWELL

7:30 p.m.

We'll get a very special guest as we celebrate the grand finale to this cruise!



Deck 13, Midship (7-9743) (11-14 years old) 10:00 a.m. - 12:00 mid

ESPN DREAM TEAM DRAFT DAY - BASKETBALL

6:15 p.m.

Join the "Commissioner" and engage in this interactive fantasy basketball draft unlike anything you've ever seen! Can YOU draft the greatest basketball team of All-Time?

THAT'S HILARIOUS

9:30 p.m.

Ever wanted to show off your comedy skills? Then be a part of the cast for the crazy improv show "That's Hilarious" and put on a live show for your friends.



Entrance on Deck 4, Forward (7-9418) (14-17 years old) 10:00 a.m. - 1:00 a.m.

ZOMBIFIED

10:15 p.m.

A big movie producer is looking for zombies to help him film the finale to his latest masterpiece, Zombified.

BUENA VISTA THEATRE

Today's Movies



8:30 a.m.
Duration: 1 hr 43 mins
Rating: G

DOLBY 3D



1:45 p.m. & 10:30 p.m.
Duration: 1 hr 32 mins
Rating: G



10:45 a.m.
Duration: 2 hrs 29 mins
Rating: PG-13

DOLBY 3D



5:45 p.m. & 8:15 p.m.
Duration: 1 hr 40 mins
Rating: G



Does your family have what it takes to make their performing dreams come true?

Find out at the Disney Fantasy Family Talent Show, dare to show your family's flair!

*D Lounge,
Deck 4, Midship,
7:30 p.m.*



ADULT VARIETY ACT

Featuring the Magic and Illusion of Knight Magic, as they entertain you in this adult exclusive show.

*The Tube (18+),
Deck 4, Aft,
10:45 p.m.*

YOUTH ACTIVITIES OPEN HOUSE

Open House is an opportunity for all to come and participate in a variety of exciting activities and free time in the Oceaneer Club, Oceaneer Lab, It's A Small World Nursery, Vibe and Edge throughout the cruise. During these times secured programming will still be offered in the other venue for those looking to check their children into care.

Disney's Oceaneer Club: 9:00 a.m. - 10:30 a.m.

Vibe: 9:00 a.m. - 10:00 a.m.

Edge: 9:00 a.m. - 10:00 a.m.

MORE TO ENJOY WHILE ONBOARD

THE MUPPETS

There's a Muppet mystery onboard, and Kermit and Pepe need YOU to solve it! Search the ship for clues and use our special detective "badge" to catch the culprit!



Deck 2 & 5, Midship,
9:00 a.m. - 10:00 p.m.



PLAN YOUR NEXT CRUISE

Can't wait for your next Disney Cruise Line vacation? Don't wait to book your next cruise! You'll save 10%, receive up to a \$200 onboard credit, and pay a reduced deposit when you book today. Just visit the Future Cruise Sales Desk, Deck 4, Midship, or call 7-2848 for more information.



DISNEY VACATION CLUB® GROUP PREVIEW

Want to learn more about taking magical vacations year after year? Please see a Disney Vacation Club representative on Deck 4, Midship, or call 7-2805 from your stateroom phone for more information about our interactive group presentation.



ADVENTURES BY DISNEY

Join us for a special presentation today at 4:00 p.m. in The Tube to learn what traveling with Adventures by Disney is all about. See our Adventure Guide on Deck 4, Midship.



ARR-CADE

Where can you be a ninja, play the guitar like a rock star, race a car down the streets of Tokyo and along the way WIN some great prizes? Arr-cade located Deck 11, Aft where the pirates play.

ON DEMAND TV

Watch Disney movies, Hollywood features, ABC Shows, and even captioned content, plus much more "On Demand" for FREE in the comfort of your stateroom! Bookmark your movie and come back to watch it later. Press MENU on your stateroom television remote control, and follow the prompts.

SHOPPING

FRAGRANCE OF THE DAY

Stop by Whitecaps to test our selected fragrance today! Deck 3, Forward.

HELPFUL SHOPPING TIP

While shopping onboard, you may collect your items from all three stores before proceeding to checkout at any register. No need to have to wait in line in each store to pay for your items separately! Whitecaps, Sea Treasures, and Mickey's Mainsail, Deck 3, Forward.

BLUE GALLERY LIVE AUCTION TODAY

Start warming up your bidding muscles for today's live auction where you'll have the chance claim a beautiful piece of artwork from an array of internationally renowned artists. Also take the time to visit the Vista Gallery, Deck 4 Midship, and receive up to 50% off of US Retail Prices on Blue Gallery Artwork. FREE artwork will be given to the first 100 Guests attending the Live Auction. D Lounge, Deck 4, Midship.

GREAT OFFERS WHEN YOU SHOP ONBOARD

Here's another great reason to shop onboard! With any merchandise purchase of \$25 or more, receive a Disney Cruise Line Towel for \$14.95 and/or, with a purchase of \$30 or more, receive a Disney Cruise Line Duffle for \$17.95. Take advantage of this great offer and visit Mickey's Mainsail, Sea Treasures, and Whitecaps today! Deck 3, Midship.

MAUI DIVERS FINE ISLAND JEWELRY TRUNK SHOW

Learn more about precious black coral, when you visit Maui Divers Jewelry. The black coral featured in Maui Divers Jewelry is amongst the most dense and pure in the world. Appreciate the luster when you visit Maui Divers at Whitecaps, Deck 3, Midship.

2013 DISNEY CRUISE LINE MERCHANDISE NOW AVAILABLE

Step into Mickey's Mainsail today and commemorate your Disney Cruise with a wide selection of 2013 dated Disney Cruise Line merchandise. From t-shirts to photo albums and more, you are sure to find a special souvenir for the whole family. Deck 3, Midship.

LAST CHANCE TO TAKE HOME BEAUTIFUL ARTWORK

Don't miss your last chance to visit the Vista Gallery before reaching land! Stroll through the Vista Gallery to view some of your favorite Disney characters as interpreted by celebrated Disney artists. Also check out Blue Gallery's inspiring contemporary art collection where you can get up to 50% off US Retail Prices. For details, stop by the Vista Gallery, Deck 4 Midship.



SENSES
SPA & SALON

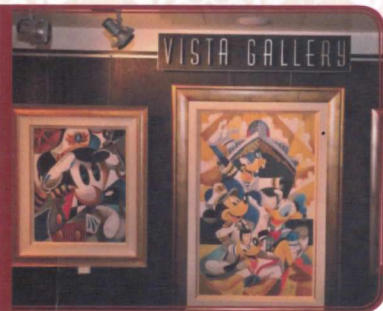
PAMPER PACKAGE

- 50 minute Full Body Massage
 - Foot & Ankle Massage
 - Indian Scalp Massage
 - 25 Minute Booster Facial
- ONLY \$149
Call Senses Spa & Salon, 7-1465

VISTA GALLERY

Your last opportunity to purchase your Disney art. Shipping available. Stop by the Vista Gallery, Deck 4, Midship, to find out more.

6:00 p.m. - 10:00 p.m.



Shutters

PHOTOBOOK

Turn your magical vacation memories into an impressive keepsake with a personalized, one-of-a-kind PhotoBook. Fill every page with wonderful memories of your family during this cruise. Visit Shutters today, as supplies are limited and orders will close at 8:00 p.m. on the last day of the cruise.

*Terms and conditions apply.

The PhotoBook is only available for purchase during this cruise.

IMPORTANT INFORMATION

Security Notice

All Guests (including children) who wish to disembark the ship are required to present their Key to the World card at the gangway. A photo ID is also required for those Guests who are 18 years of age or older. Guests under the age of 18 are required to have a Parent, Guardian or other responsible adult sign an authorization form at the time it is given out if they wish to go ashore unaccompanied. Authorization forms are available at the gangways and Guest Services.

Please Note:

Please remember to use plenty of sunscreen and mosquito repellent when venturing ashore.

Cold and Flu Reminder

Please wash hands frequently and thoroughly, particularly before meals. Contact the Health Center by dialing 7-1923, should anyone in your party become ill.

Corridor Quiet Hours

As a courtesy to all our Guests, please recognize quiet hallway hours from 10:00 p.m. to 8:00 a.m.

Inclement Weather

For the safety of all Guests, outdoor events may be changed due to unforeseen weather conditions.

Environmental Message

With Disney's commitment to the Environment, please refrain from throwing anything over the Ship's side. Thank you!

No Reserved Seats Policy

As a courtesy to all our Guests, we kindly advise that the saving of seats is not permitted in the Walt Disney Theatre, and the saving of the sun loungers is not permitted on Deck 11, 12, and 13. Items left unattended will be returned to and found at Guest Services, Deck 3 Midship.

Smoking

For the comfort of our guests the following areas are designated as Smoking areas: - Promenade Deck (Deck 4), smoking is permitted Port Side, Aft only from 6:00 p.m. to 6:00 a.m.
- Currents - Deck 13, Forward, Port Side.
- Meridian Bar - Deck 12, Aft, Port Side, outside.
- Smoking is permitted on stateroom verandahs. Smoking is prohibited inside all guest staterooms. Guests found smoking in their staterooms will be charged a \$250 stateroom recovery fee. Electronic cigarettes may only be used in designated smoking areas.

Walt Disney Theatre

Theatrical performances may use artificial fog, strobe lights, pyrotechnics and other special effects. For the safety of our performers and the comfort of those around you, the use of any photography, video recording device or any electronic equipment is prohibited.

Verandah Safety

Please do not leave any combustible materials on your balcony when not present in your stateroom for safety reasons.

| Morning | 8:30 | 8:45 | 9:00 | 9:15 | 9:30 | 9:45 | 10:00 | 10:15 | 10:30 | 10:45 | 11:00 | 11:15 | 11:30 | 11:45 | 12:00 | 12:15 | 12:30 | 12:45 | 1:00 | 1:15 | 1:30 | |
|---------------------------------|--|------|---------------------------|------|--|------|-------|-------|--|-------|---|-------|--|-------|-------------------------------------|-------|---------------------------------------|-------|---|------|------------------------------------|--|
| FUNNEL VISION | Tinker Bell (G) Funnel Vision | | | | Pocahontas (G) Funnel Vision | | | | The Princess and the Frog (G) Funnel Vision | | | | | | | | | | | | | |
| BUENA VISTA THEATRE | Monsters University (G) Duration: 1 Hour 43 Minutes | | | | | | | | | | The Lone Ranger (PG-13) Duration: 2 Hours 29 Minutes | | | | | | | | | | | |
| CHARACTER | Mickey Dk 4, Balcony | | | | Pluto Dk 4, Balcony | | | | Daisy Dk 4, Balcony | | | | Princess Gathering Lobby Atrium | | | | Character Dance Party Lobby Atrium | | | | Phineas & Ferb Lobby Atrium (H) | |
| FUN FOR ALL AGES | Open House Toddler Time It's A Small World Nursery < Starts at 8:00 a.m. | | Disney Junior D Lounge | | Disney Animation: Staging a Scene D Lounge | | | | Bingo Pre Sales | | Could Go Jackpot Bingo D Lounge | | | | Ultimate Disney Trivia La Piazza | | Teen Beach Movie Crafts La Piazza | | | | Magic Workshop D Lounge | |
| ADULTS | Friends of Bill W. Outlook | | | | Art of The Theme Show Tour Pre-Book at Guest Services | | | | Team Trivia O'Gills Pub | | | | Club 18*21 - 2000's Music Challenge O'Gills Pub | | | | Club 18*21 - Lunch Royal Court | | Martini Tasting (21+) Meridian (Nom. Fee Pre Book) | | | |
| VIBE 14-17 YEARS OLD | Youth Activities Open House | | | | Coffee Break | | | | Sun Deck Fun | | | | | | | | | | | | | |
| EDGE 11-14 YEARS OLD | Youth Activities Open House | | | | | | | | | | Ice Cream Social | | | | | | | | | | | |
| OCEANEER LAB 3-12 YEARS OLD | Human Bingo | | | | Disney Animation: Creating a Character | | | | Piston Cup Challenge | | | | Wii Challenge | | | | Lunch | | | | Craft Corner | |
| OCEANEER CLUB 3-12 YEARS OLD | Youth Activities Open House | | | | Cruisin' with Crush | | | | Journey to Neverland | | | | Tinker Bell's Talent Show | | | | | | | | | |

| Afternoon | 1:45 | 2:00 | 2:15 | 2:30 | 2:45 | 3:00 | 3:15 | 3:30 | 3:45 | 4:00 | 4:15 | 4:30 | 4:45 | 5:00 | 5:15 | 5:30 | 5:45 | 6:00 | 6:15 | 6:30 | 6:45 | | | | | |
|---------------------------------|--|------|---|------|--|------|---|------|---|------|--|------|--|------|---------------------|------|--|------|---|------|----------------------------------|--|--|--|------------|--|
| FUNNEL VISION | DJ Request Fest Funnel Vision | | | | Teen Beach Movie (G) Funnel Vision | | | | Mary Poppins (G) Funnel Vision | | | | | | | | | | | | | | | | | |
| BUENA VISTA THEATRE | Monsters University DOLBY 3D (G) Duration: 1 Hour 43 Minutes | | | | | | | | | | Bingo Pre Sales | | | | Final Jackpot Bingo | | | | Finding Nemo DOLBY 3D (G) Duration: 1 Hour 40 Minutes > 7:25 p.m. | | | | | | | |
| CHARACTER | Chip & Dale Phineas & Ferb Dk 4, Balcony | | | | Chip & Dale Phineas & Ferb Dk 4, Balcony | | | | Chip & Dale Phineas & Ferb Dk 4, Balcony | | | | Chip & Dale Phineas & Ferb Dk 4, Balcony | | | | | | | | | | | | | |
| FUN FOR ALL AGES | Cruisin' For Trivia La Piazza | | DJ Request Fest Funnel Vision | | Family Crafts: 3D Crafts La Piazza | | | | Live Art Auction D Lounge - Art Preview at 3:30 p.m. | | Live Music with Ash & Hannah Deck 12, Forward | | Playhouse D Lounge D Lounge | | | | Jewish Sabbath Outlook | | Disney's Believe Walt Disney Theatre | | | | | | | |
| ADULTS | 90's Music Trivia O'Gills Pub | | Anyone Can Cook - Lobster Ravioli D Lounge | | Chip It Golf Lobby Atrium | | Adventures By Disney Presentation The Tube | | Tequila & Margarita Tasting (21+) Ooh La La (Nom. Fee, Pre Book) | | Pub Quiz O'Gills Pub | | | | | | | | | | | | | | | |
| VIBE 14-17 YEARS OLD | Mixology (21+) Skyline (Nom. Fee, Pre Book) | | | | Know It All Trivia O'Gills Pub | | | | Live Guitar Currents | | | | 50 More Movie Quotes Trivia O'Gills Pub | | | | Group Cycling Senses Fitness Center | | | | Origami Favorites O'Gills Pub | | | | Open House | |
| EDGE 11-14 YEARS OLD | Ice Cream Social | | | | Disney Animation: Cartoon Physics | | | | Sports Deck Fun | | | | Youth Activities Open House | | | | | | | | | | | | | |
| OCEANEER LAB 3-12 YEARS OLD | Anyone Can Cook | | | | Get the Hook | | | | Games & More | | | | Parachute Games | | | | Anyone Can Cook | | | | | | | | | |
| OCEANEER CLUB 3-12 YEARS OLD | Memory Wall | | | | Craft Corner | | | | Big Top Fun Fest! | | | | Dinner | | | | Mickey's Puzzle Playtime | | | | | | | | | |

| Evening | 7:00 | 7:15 | 7:30 | 7:45 | 8:00 | 8:15 | 8:30 | 8:45 | 9:00 | 9:15 | 9:30 | 9:45 | 10:00 | 10:15 | 10:30 | 10:45 | 11:00 | 11:15 | 11:30 | 11:45 | 12:00 | | | |
|---------------------------------|---|------|------------------------|------|----------------------------------|------|-------------------|------|---|------|---|------|---------------------------------|-------|-------|-------|---|-------|-------|-------|--|--|--|--|
| FUNNEL VISION | Enchanted (PG) Funnel Vision | | | | Invincible (PG) Funnel Vision | | | | | | | | | | | | | | | | | | | |
| BUENA VISTA THEATRE | Finding Nemo DOLBY 3D (G) Duration: 1 Hour 40 Minutes | | | | | | | | | | Monsters University DOLBY 3D (G) Duration: 1 Hour 43 Minutes > 12:13 a.m. | | | | | | | | | | | | | |
| CHARACTER | Donald Dk 4, Balcony | | Goofy Dk 4, Balcony | | Ariel Preludes | | Belle Preludes | | LA VA REAL SOON! Lobby Atrium | | | | | | | | | | | | | | | |
| FUN FOR ALL AGES | Family Dance Party The Tube | | | | Family Talent Show D Lounge | | | | Disney's Believe Walt Disney Theatre | | | | Family Dance Party D Lounge | | | | Farewell Karaoke D Lounge | | | | | | | |
| ADULTS | Live Guitar with Mike Archer O'Gills Pub | | | | Pub Quiz O'Gills Pub | | | | Live Music with Ash & Hannah La Piazza | | | | Battle of the Sexes The Tube | | | | Variety Act Knight Magic The Tube - Magic | | | | Cruise Staff Farewell Followed by Going Underground The Tube | | | |
| VIBE 14-17 YEARS OLD | Youth Activities Open House | | | | Smoothie Time | | | | Open House | | | | Zombified | | | | Final Farewell | | | | | | | |
| EDGE 11-14 YEARS OLD | That's Hilarious | | | | Gender Wars | | | | Dance Party | | | | | | | | | | | | | | | |
| OCEANEER LAB 3-12 YEARS OLD | Crafts Galore | | | | Game Challenge | | | | Bingo | | | | Super Sloppy Science | | | | Magic Playfloor | | | | Dance Party | | | |
| OCEANEER CLUB 3-12 YEARS OLD | Stitch's Final Farewell | | | | Wii Challenge | | | | Magic Show | | | | GAGA Ball | | | | Pictionary | | | | | | | |
| OCEANEER CLUB 3-12 YEARS OLD | Toy Story Boot Camp | | | | So You Want to be a Pirate? | | | | Journey to Neverland | | | | Games & More | | | | Movie Time | | | | | | | |
| | Crafts | | | | | | | | | | | | | | | | | | | | | | | |

Symbol for activities that will be repeated during the cruise
 Youth Activities Open House
 FOLD
 FOLD
 IN THE SPOTLIGHT SERIES
 SOLVE IT! SERIES
 JUMP UP! SERIES
 CREATE & INVENT SERIES
 CLUBHOUSE SERIES
 STORYBOOK SERIES

Evening Attire: Cruise Casual

BUENA VISTA THEATRE



MU 8:30 a.m. Duration: 1 hr 43 mins Rating: G
THE LONE RANGER 10:45 a.m. Duration: 2 hrs 29 mins Rating: PG-13
MONSTERS UNIVERSITY 1:45 p.m. & 10:30 p.m. Duration: 1 hr 32 mins Rating: G
NEMO 5:45 p.m. & 8:15 p.m. Duration: 1 hr 40 mins Rating: G

YOUTH ACTIVITIES THEMED EXPERIENCES

- CLUBHOUSE SERIES** focuses on movement and features content which appeals to younger children.
- JUMP UP! SERIES** includes large group games & movement-oriented activities.
- IN THE SPOTLIGHT SERIES** focuses on children's stage presence with lots of activities and enthusiasm.
- STORYBOOK SERIES** is designed with a strong connection to the Disney classic stories.
- CREATE & INVENT SERIES** will have a tactile focus allowing children to create and admire their work.
- SOLVE IT! SERIES** are less active, but will challenge children with problem/solutions-based activities.

YOUTH ACTIVITIES OPEN HOUSE

A non-secured program with activities for families, adults and children of all ages to enjoy together.

SHIP DIRECTORY

| YOUTH ACTIVITIES | | | |
|----------------------------|--------------|----------|-------------|
| DISNEY'S OCEANEER CLUB | DECK 5, MID | 10:30 AM | - 12:00 MID |
| DISNEY'S OCEANEER LAB | DECK 5, MID | 9:00 AM | - 12:00 MID |
| EDGE | DECK 13, MID | 10:00 AM | - 12:00 MID |
| VIBE | DECK 4, FWD | 10:00 AM | - 1:00 AM |
| IT'S A SMALL WORLD NURSERY | DECK 5, MID | 9:00 AM | - 11:30 PM |

| RECREATION | | | |
|--------------------------|-----------------|----------|-------------|
| AQUADUCK | DECK 12, MID | 9:00 AM | - 11:00 PM |
| AQUALAB | DECK 12, AFT | 10:00 AM | - 6:00 PM |
| DONALD'S POOL | DECK 11, MID | 6:00 AM | - 12:00 MID |
| GOLF/SPORTS SIMULATORS | DECK 13, AFT | 9:00 AM | - 6:00 PM |
| GOOFY GOLF | DECK 13, AFT | 8:00 AM | - 10:00 PM |
| GOOFY'S SPORTS DECK | DECK 13, AFT | 8:00 AM | - 6:00 PM |
| MICKEY'S POOL | DECK 11, MID | 6:00 AM | - 11:00 PM |
| MICKEY'S SLIDE | DECK 11, MID | 9:00 AM | - 6:00 PM |
| MIDSHIP DETECTIVE AGENCY | DECK 2 & 5, MID | 9:00 AM | - 10:00 PM |
| NEMO'S REEF | DECK 11, MID | 9:00 AM | - 6:00 PM |
| PORT ADVENTURES DESK | DECK 5, MID | | |
| QUIET COVE POOL | DECK 11, FWD | 6:00 AM | - 12:00 MID |
| SATELLITE FALLS | DECK 13, FWD | 6:00 AM | - 6:00 PM |
| SENSES FITNESS CENTER | DECK 11, FWD | 6:30 AM | - 10:00 PM |

| GENERAL INFORMATION | | | |
|--------------------------|--------------|----------|------------|
| ARR-CADE | DECK 11, AFT | | 24 HOURS |
| ADVENTURES BY DISNEY | DECK 4, MID | 11:30 AM | - 2:00 PM |
| DISNEY VACATION CLUB | DECK 4, MID | 9:00 AM | - 11:30 AM |
| | | 2:30 PM | - 10:00 PM |
| FUTURE CRUISE SALES DESK | DECK 4, MID | 9:00 AM | - 12:00 PM |
| | | 2:00 PM | - 6:00 PM |
| | | 7:30 PM | - 10:00 PM |
| GUEST SERVICES | DECK 3, MID | | 24 HOURS |
| MEDICAL HEALTH CENTER | DECK 1, FWD | 9:30 AM | - 11:00 AM |
| | | 4:30 PM | - 7:00 PM |
| PORT & SHOPPING DESK | DECK 4, MID | | |
| PRELUDES | DECK 3, FWD | 2:30 PM | - 3:15 PM |
| | | 5:45 PM | - 6:30 PM |
| | | 8:00 PM | - 8:45 PM |
| SENSES SPA AND SALON | DECK 11, FWD | 8:00 AM | - 10:00 PM |
| SHUTTERS PHOTO GALLERY | DECK 4, MID | 10:00 AM | - 11:00 PM |
| SHUTTERS DIGITAL | DECK 4, MID | | 24 HOURS |

| SHOPPING | | | |
|--------------------------|--------------|----------|------------|
| BIBBIDI BOBBIDI BOUTIQUE | DECK 5, MID | 9:00 AM | - 9:00 PM |
| MICKEY'S MAINSAIL | DECK 3, FWD | 9:30 AM | - 11:00 PM |
| QUACKS | DECK 11, MID | 10:00 AM | - 4:00 PM |
| SEA TREASURES | DECK 3, FWD | 9:30 AM | - 11:00 PM |
| VISTA GALLERY | DECK 4, MID | 10:00 AM | - 10:00 PM |
| WHITECAPS | DECK 3, FWD | 9:30 AM | - 11:00 PM |
| WHOZITS & WHATZITS | DECK 11, MID | 10:00 AM | - 4:00 PM |

DINING & LOUNGES

| BREAKFAST | | | |
|---------------------|--------------|---------|------------|
| CABANAS CONTINENTAL | DECK 11, AFT | 7:00 AM | - 7:30 AM |
| CABANAS | DECK 11, AFT | 7:30 AM | - 11:30 AM |
| ENCHANTED GARDEN | DECK 2, MID | 9:00 AM | - 11:00 AM |
| ROYAL COURT | DECK 3, MID | 8:00 AM | - 9:30 AM |

| LUNCH | | | |
|----------------------|--------------|----------|------------|
| CABANAS | DECK 11, AFT | 11:30 AM | - 2:00 PM |
| FILLMORE'S FAVORITES | DECK 11, MID | 11:00 AM | - 6:00 PM |
| LUIGI'S PIZZA | DECK 11, MID | 11:00 AM | - 6:00 PM |
| ROYAL COURT | DECK 3, MID | 12:00 PM | - 1:30 PM |
| TOW MATER'S GRILL | DECK 11, MID | 11:00 AM | - 11:00 PM |

| DINNER | | | |
|---|--------------|-----------|-----------|
| ANIMATOR'S PALATE | DECK 3, AFT | 5:45 PM & | 8:15 PM |
| ENCHANTED GARDEN | DECK 2, MID | 5:45 PM & | 8:15 PM |
| ROYAL COURT | DECK 3, MID | 5:45 PM & | 8:15 PM |
| PALO (18+) (RESERVATIONS REQ. & NOM. FEE APPLIES) | DECK 12, AFT | 6:00 PM | - 8:30 PM |
| REMY (18+) (RESERVATIONS REQ. & NOM. FEE APPLIES) | DECK 12, AFT | 6:00 PM | - 8:30 PM |

| LATE NIGHT SNACKS | | | |
|-------------------|--------------|----------|------------|
| LA PIAZZA (18+) | DECK 4, AFT | 10:45 PM | - 11:45 PM |
| LUIGI'S PIZZA | DECK 11, MID | 9:30 PM | - 12:00 AM |

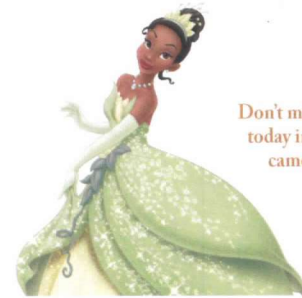
| ADDED FEATURES | | | |
|------------------|--------------|----------|-------------------|
| BEVERAGE STATION | DECK 11, MID | | 24 HOURS |
| EYE SCREAM | DECK 11, MID | 11:00 AM | - 11:00 PM |
| ROOM SERVICE | DIAL 0 | | CLOSES AT 1:30 AM |

ENTERTAINMENT - LOUNGES - BARS

Adults must be 21 and older to consume alcoholic beverages.

| | | | |
|---------------------------------|--------------|----------|--------------|
| BON VOYAGE | DECK 3, MID | 10:00 AM | - 11:00 PM |
| COVE BAR (18+) | DECK 11, FWD | 10:00 AM | - 11:00 PM |
| COVE CAFE (18+) | DECK 11, FWD | 7:00 AM | - 12:00 MID |
| CURRENTS (18+) | DECK 13, FWD | 10:30 AM | - 11:00 PM |
| D LOUNGE | DECK 4, MID | | SHOWTIMES |
| FROZENE TREATS | DECK 11, MID | 10:00 AM | - 10:00 PM |
| LA PIAZZA | DECK 4, AFT | 3:00 PM | - 12:00 MID |
| MERIDIAN (18+) | DECK 12, AFT | 10:00 AM | - 12:00 MID |
| O'GILLS PUB (18+ AFTER 9:00 PM) | DECK 4, AFT | 12:00 PM | - 12:00 MID |
| OOH LA LA (18+) | DECK 4, AFT | 5:30 PM | - 12:00 MID |
| OUTLOOK | DECK 14, MID | | SUNSET TIMES |
| SKYLINE (18+) | DECK 4, AFT | 5:30 PM | - 12:00 MID |
| THE TUBE (18+) | DECK 4, AFT | 10:00 PM | - 1:00 AM |
| VISTA CAFE | DECK 4, MID | 7:30 AM | - 11:00 PM |
| WAVES | DECK 12, AFT | 10:00 AM | - 6:00 PM |

Consumers who order raw or partially cooked, ready-to-eat food of animal origin, are hereby informed that the food is not sufficiently cooked to ensure its safety.



PRINCESS GATHERING
 Don't miss your chance to see this Royal gathering today in the Lobby Atrium and don't forget your camera to capture those magical moments.
 11:00 a.m.

Character Appearances

- MICKEY MOUSE** Deck 4 Balcony, Midship 9:15 a.m.
- CHIP & DALE** Deck 4 Balcony, Midship 2:00 p.m. & 5:30 p.m.
- GOOFY** Deck 4 Balcony, Midship 9:45 a.m. & 7:45 p.m.
- SEA YA REAL SOON** Lobby Atrium 4:30 p.m. & 10:15 p.m.
- PLUTO** Deck 4 Balcony, Midship 10:15 a.m.
- DONALD DUCK** Deck 4 Balcony, Midship 7:15 p.m.
- DAISY DUCK** Deck 4 Balcony, Midship 10:45 a.m.
- ARIEL** Preludes - 7:30 p.m.
- PRINCESS GATHERING** Lobby Atrium - 11:00 a.m.
- BELLE** Preludes - 8:00 p.m.
- PRINCESS MINNIE** Deck 4 Balcony, Midship 11:15 a.m.
- CHARACTER DANCE PARTY** Lobby Atrium - 1:00 p.m.
- PHINEAS & FERB** Lobby Atrium (H) 1:30 p.m. & 2:30 p.m.

(H) Hallway - (S) Starboard Side - (P) Port Side - (V) Vestibule

Don't forget your Camera to capture those magical moments!

For details of daily Disney character appearances, refer to the character line in your Navigator Grid, or the digital character board in the Lobby Atrium.