

PERSONAL NAVIGATOR

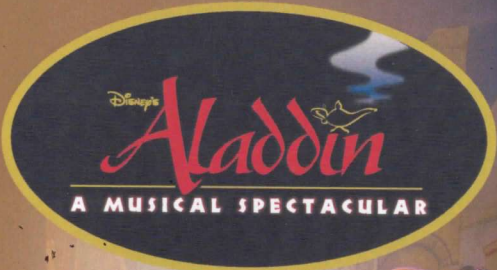


Sunrise: 6:29 a.m. Sunset: 7:37 p.m.
Evening Attire: Formal

Monday: Overcast High: 79°F/26°C
Tuesday: Overcast High: 82°F/28°C

MONDAY, JULY 29, 2013

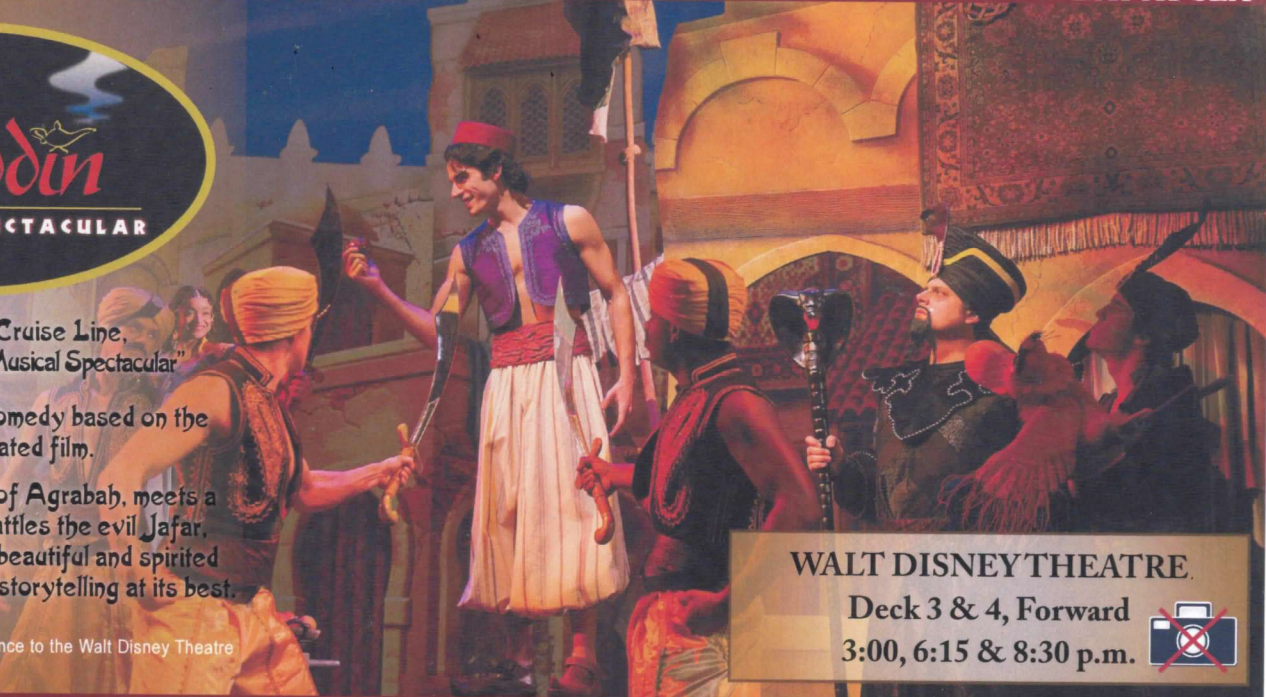
DAY AT SEA



New to Disney Cruise Line.
"Disney's Aladdin - A Musical Spectacular"

A fast-paced, musical comedy based on the beloved animated film.


Aladdin, the "street rat" of Agrabah, meets a wise-cracking Genie, baffles the evil Jafar, and falls in love with the beautiful and spirited Princess Jasmine. Disney storytelling at its best.



WALT DISNEY THEATRE

Deck 3 & 4, Forward
3:00, 6:15 & 8:30 p.m.



 Assistance available at the entrance to the Walt Disney Theatre 30 minutes prior to show time.

Disney FANTASY Fun Facts

Tonnage: 130,000 Gross Tons
Height: 216 Feet
Length: 1115 Feet

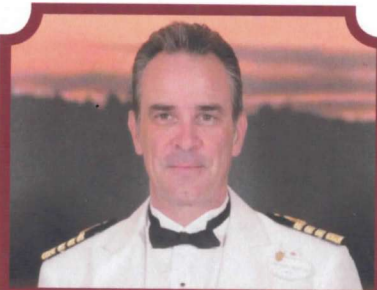
Important Dates

Name Announcement: March 10, 2009
Steel Cutting: March 16, 2010
Keel Laying: February 11, 2011
Delivery: February 9, 2012

Almost four football fields in length, the Disney Fantasy is longer than the height of the Eiffel Tower in Paris (1,063 feet). She is also longer than the height of New York City's famous Chrysler building (1,047 feet).

Disney Fantasy's Whistle

Will be played after today's noon announcement
The Disney Fantasy's whistle, a prominent element of the "Sailing Away" deck party at the start of the cruise, is quite the musical talent. It's able to perform not just the first musical line of "When You Wish Upon a Star" but also the second line of the song ("makes no difference who you are") plus several measures of "Yo Ho (A Pirate's Life for Me)," "It's a Small World," "Be Our Guest," "Hi Diddle Dee Dee (An Actor's Life for Me)" and "A Dream is a Wish."



CAPTAIN'S RECEPTION

Enjoy live music and a cocktail while meeting some of the ships officers.

Lobby Atrium, Deck 3, Midship,
5:00 & 7:30 p.m.

Enjoy an exclusive photo opportunity with Captain Marco at
5:15 & 7:30 p.m., Lobby Atrium

Don't Miss:

ESPN Dream Team Draft Day - Baseball (18+)
O'Gills Pub, Deck 4, Aft - 11:15 a.m.

Play ball! Join the "Commissioner" and engage in this interactive fantasy baseball draft unlike anything you've ever seen! Can YOU draft the greatest baseball team of All-Time?

Disney's Behind the Scenes: John Saade - ABC TV
Buena Vista Theatre, Deck 4 & 5, Midship - 2:00 p.m.

Join John for a behind-the-scenes look at the reality shows of ABC, giving first hand insights into how the shows were developed, how they evolved, and interesting unknown tidbits and secrets.

Anyone Can Cook - Apple Strudel
D Lounge, Deck 4, Midship - 2:15 p.m.

From our galley to yours. Join our chefs as they show you how to prepare delicious dishes. Today's Menu - Apple Strudel.

Majority Rules (18+)
The Tube, Deck 4, Aft - 10:00 p.m.

Join your Club Host, David, to find out who really rules!



Visit Shutters for all your photographic needs, from Digital cameras, batteries, binoculars and accessories. All photos taken during this cruise will be available for viewing on our photo kiosks at Shutters Digital, as well as in your photo folder at Shutters, Deck 4, Midship.

DINNER MENU

Animator's Palate: Pacific Rim Cuisine
Enchanted Garden: Continental Market Cuisine
Royal Court: French Cuisine

DRINK OF THE DAY

Bahama Mama (Alcoholic)
Coco Bali (Non Alcoholic)

IMPORTANT NUMBERS

Fire/Security: 7-3001
Medical Emergency: 7-3000
Health Center: 7-1923

FUN FOR ALL AGES HIGHLIGHTS



WAKE UP WITH DISNEY JUNIOR

D Lounge, Deck 4, Midship - 8:30 a.m.

What happens when you experience unlimited fun with your favorite Disney Junior shows? You get an exciting dance party designed especially for preschoolers ages seven and under.

DISNEY ANIMATION: CREATING A CHARACTER

D Lounge, Deck 4, Midship - 9:45 a.m. & 12:45 p.m.

Go behind the scenes at Walt Disney Animation Studios as Walt Disney himself talks about his most famous characters, then learn the basic techniques of drawing Mickey and Donald in this fun and interesting enrichment program.

PORT & SHOPPING TALK

Buena Vista Theatre, Deck 4 & 5, Forward - 11:30 a.m.

Join your Port and Shopping Guide Candice to learn about the incredible shopping ashore this cruise. Over \$1000 in Prizes & Giveaways!



JACK-JACK'S INCREDIBLE DIAPER DASH

Lobby Atrium, Deck 3, Midship - 12:00 p.m.

Calling all baby cruisers! The Disney Fantasy's babies take to the mat to see who's the fastest crawler of the seven seas! Register your baby from 11:45 a.m. - 12:00 p.m.

DISNEY VACATION CLUB GROUP PREVIEW

The Tube, Deck 4, Aft - 12:30 p.m.

Want to learn more about taking magical vacations year after year? Please see a Disney Vacation Club representative on Deck 4, Midship, or call 7-2805 from your stateroom phone for more information about our interactive group presentation.



CLUB D DANCE PARTY

D Lounge, Deck 4, Midship - 7:30 p.m. & 9:45 p.m.

Where everyone is a V.I.P! Join your snazzy Cruise Staff as we turn D-Lounge upside down in this electrifying family nightclub featuring appearances from some of your favorite Disney Characters. Club D, where everyone is a V.I.P!

FAMILY SUPERSTAR KARAOKE

D Lounge, Deck 4, Midship - 8:30 p.m. & 10:30 p.m.

Join your Cruise Staff in D Lounge tonight and sing along to your favorite song - fun for everyone.



ADULT ACTIVITY HIGHLIGHTS

SENSES SPA FITNESS CLASSES & SEMINARS

Yoga - Donald's Pool - 7:00 a.m.

Body Sculpt Boot Camp (Nom. Fee) - Senses Fitness Center - 9:00 a.m.

Introduction to Acupuncture - Senses Spa & Salon - 10:30 a.m.

Detox For Health and Weight Loss - Senses Spa & Salon - 11:00 a.m.

Arthritis Solutions - Outlook - 2:15 p.m.

Seminar: Improving Your Posture-Walk in Comfort - Senses Spa & Salon - 3:00 p.m.

Group Cycling - Senses Fitness Center - 4:00 p.m.

Fitness Frenzy (13-17, Nom. Fee) - Senses Fitness Center - 7:00 p.m.



TASTING CLASSES

Champagne Tasting (21+) - Ooh La La (Nom. Fee, Pre Book) - 12:15 p.m.

Martini Tasting (21+) - Meridian (Nom. Fee Pre Book) - 1:00 p.m.

New World Wine Tasting (21+) - Ooh La La (Nom. Fee, Pre Book) - 1:45 p.m.

Mixology (21+) - Skyline (Nom. Fee, Pre Book) - 2:00 p.m. & 4:00 p.m.

Italian Cocktail Tasting (21+) - La Piazza (Nom. Fee, Pre Book) - 4:45 p.m.

Tequila & Margarita Tasting (21+) - Ooh La La (Nom. Fee, Pre Book) - 4:45 p.m.

Cognac Tasting (21+) - Cove Cafe (Nom. Fee, Pre Book) - 10:00 p.m.

Whiskey Tasting (21+) - Meridian (Nom. Fee Pre Book) - 10:30 p.m.

Please make reservations for tastings at Guest Services for a nominal fee.

Tasting Seminars are only for Guests 21 and Older.



CLUB 18*21 - LUNCH

Royal Court, Deck 3, Midship - 12:15 p.m.

CLUB 18*21 - GIANT JENGA

O'Gills Pub, Deck 4, Aft - 4:00 p.m.

CLUB 18*21 - MIXER

O'Gills Pub, Deck 4, Aft - 10:15 p.m.

PUB QUIZ

O'Gills Pub, Deck 4, Aft - 7:45 p.m.

Join us as we test your knowledge against your fellow Guests at our Pub Quiz challenge.

MAJORITY RULES

The Tube, Deck 4, Aft - 10:00 p.m.

Join your Club Host, David, to find out who really rules!

LATIN DANCE FIESTA FEAT. LIVE MUSIC & GUEST DJ IMMORTAL

The Tube, Deck 4, Aft - 10:30 p.m. & 11:15 p.m.

Join your Cruise Staff for our Latin Dance Fiesta featuring the live music of Andrea & Rafaela and Guest DJ Immortal.

DIAMOND JACKPOT BINGO

D Lounge, Deck 4, Midship

Card Sales - 10:30 a.m.

Game Starts - 10:45 a.m.

Join us for 4 cash prize games and your chance to win a Diamond Heart Pendant! Everyone attending will also receive a voucher to double their chances to win at the Port & Shopping Show.

\$5,000 MEGA JACKPOT BINGO

D Lounge, Deck 4, Midship

Card Sales - 4:00 p.m.

Game Starts - 4:15 p.m.

It's massive, it's supersized. It's \$5,000 MEGA jackpot bingo! Take home \$5,000 if you can cover your card in 46 numbers or less. If not, we carry on to play for the biggest cash prize of the session. It's big, it's massive, it's supersized. It's \$5,000 MEGA jackpot bingo! Take home \$5,000 if you can cover your card in 46 numbers or less. If not, we carry on to play for the biggest cash prize of the session.

YOUTH ACTIVITIES HIGHLIGHTS

DINE & PLAY

A convenience for families dining at 8:15 p.m., our Youth Activities Counselors will be available at 9:15 p.m. at the entrance of Royal Court, Enchanted Garden and Animator's Palate dining rooms to bring registered children to join the fun in the Youth Activity areas.



Deck 5, Midship (7-5864) 9:00 a.m. - 11:30 p.m.

OPEN HOUSE

8:00 a.m. - 9:00 a.m.

Your chance to see our toddler space, It's A Small World Nursery.



*Deck 5, Midship (7-1440)
(3-12 years old) 9:00 a.m. - 12:00 mid*

TOY STORY BOOT CAMP

3:00 p.m.

Join Corporal Green in our own version of boot camp as we learn how to have fun - The Toy Story way!

PICTURE THIS

3:45 p.m.

Create your own professional picture frame and take a photo with a special guest.



*Deck 5, Midship (7-1445)
(3-12 years old) 9:00 a.m. - 1:00 a.m.*

SUPER SLOPPY SCIENCE

10:30 a.m.

Join Professor Make-O-Mess in some of the most extreme experiments you will ever see in the world of Super Sloppy Science!

GET THE HOOK

4:45 p.m.

A villainous villain has stolen Captain Hook's prized golden hook. Become a member of the Top Deck Detective Agency and help solve the clues to retrieve Hook's hook.



*Deck 13, Midship (7-9743)
(11-14 years old) 10:00 a.m. - 1:00 a.m.*

SUPER SLOPPY SCIENCE - FLUBBER

3:00 p.m.

Join Professor Make-O-Mess in some of the most extreme experiments you will ever seen in the world of Super Sloppy Science!

THAT'S HILARIOUS

9:30 p.m.

Ever wanted to show off your comedy skills? Then be a part of the cast for the crazy improv show "That's Hilarious" and put on a live show for your friends.



*Entrance on Deck 4, Forward (7-9418)
(14-17 years old) 10:00 a.m. - 2:00 a.m.*

ZOMBIFIED

12:30 p.m.

A big movie producer is looking for zombies to help him film the finale to his latest masterpiece, Zombified.

GENDER WARS

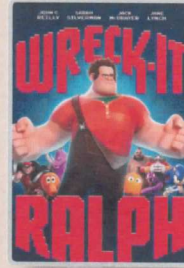
10:15 p.m.

It's the battle of girls vs. boys... Who will dominate to win the ultimate battle?

BUENA VISTA THEATRE

Today's Movies

DOLBY 3D



8:30 a.m.
Duration: 1 hr 53 mins
Rating: PG



3:15 p.m.
Duration: 2 hrs 29 mins
Rating: PG-13

DOLBY 3D



6:00 p.m. & 8:15 p.m.
Duration: 1 hr 41 mins
Rating: PG

DOLBY 3D



10:45 p.m.
Duration: 2 hrs 10 mins
Rating: PG-13



FAMILY VARIETY ACT

Featuring the Comedy & Juggling of Mike Price, as he entertains the entire family in this fun-filled show.

*The Tube,
Deck 4, Aft,
7:30 p.m.*



ADULT VARIETY ACT

Featuring the Comedy & Ventriloquism of Lynn Trefzger, as she entertains you in this adult exclusive show.

*Walt Disney Theatre (18+),
Deck 3 & 4, Forward,
10:45 p.m.
(Doors open at 10:30 p.m.)*

YOUTH ACTIVITIES OPEN HOUSE

Open House is an opportunity for all to come and participate in a variety of exciting activities and free time in the Oceaneer Club, Oceaneer Lab, It's A Small World Nursery, Vibe and Edge throughout the cruise. During these times secured programming will still be offered in the other venue for those looking to check their children into care.

Disney's Oceaneer Lab: 7:15 p.m. - 8:30 p.m.
Disney's Oceaneer Club: 9:00 a.m. - 10:00 a.m.

Vibe: 9:00 a.m. - 10:00 a.m.
Edge: 9:00 a.m. - 10:00 a.m.

MORE TO ENJOY WHILE ONBOARD

PLAN YOUR NEXT CRUISE



Another Disney Cruise Line vacation is in your future! Book a future cruise today and you'll save 10%, receive up to a \$200 onboard credit, and pay a reduced deposit! Visit the Future Cruise Sales Desk, Deck 4, Midship. Book by 8:30 p.m. Monday for a chance to win \$100 Onboard Credit for this cruise!

DISNEY VACATION CLUB® MEMBERS CELEBRATION



Members! Mix and mingle with other Members and learn how you can enhance your Membership! Please see a Disney Vacation Club representative on Deck 4, Midship, or call 7-2805 from your stateroom phone for more information.

PORT & SHOPPING SHOW

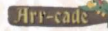


The Buena Vista Theatre, Deck 4 Forward 11:30 a.m. Join your Shopping Guide Candice to learn about the incredible tax & duty free shopping in San Juan & St. Thomas. All in attendance will receive a FREE Caribbean Charm Bracelet and be entered to win over \$1000 in prizes and giveaways! FREE Coupon Book & Cruise Ship Charm for the 1st 150 guests in attendance!

ONBOARD AIRLINE CHECK IN

If you would like to have your boarding passes printed for you onboard and have your luggage taken to the airport for you, register before Wednesday. If you have a Disney Cruise Line airport transfer to Orlando International Airport and fly with one of the participating airlines, stop at Guest Services, Deck 3, Midship to register.

ARR-CADE



Where can you be a ninja, play the guitar like a rock star, race a car down the streets of Tokyo and along the way WIN some great prizes? Arr-CADE located Deck 11, Aft where the pirates play.

ON DEMAND TV

Watch Disney movies, Hollywood features, ABC Shows, and even captioned content, plus much more "On Demand" for FREE in the comfort of your stateroom! Bookmark your movie and come back to watch it later. Press MENU on your stateroom television remote control, and follow the prompts.

Disney Cruise Line. PORT ADVENTURES

Port Adventures provide you and your family with the very best recreation, leisure and sightseeing in San Juan and St. Thomas. Sail into the horizon on the Castaway Catamaran Sail & Snorkel, explore coral reefs on the Captain Nautica Snorkeling Expedition or visit Casa Bacardi, the largest rum distillery in the world during the San Juan Bacardi Rum Distillery & Old San Juan City Tour. Whatever it is you choose to do, there is adventure waiting for you in each port. Visit our friendly Port Adventures Team located Deck 5, Midship, for reservations and questions about these and many other offerings.

SHOPPING

FRAGRANCE OF THE DAY

Stop by Whitecaps to test our selected fragrance today! Deck 3, Forward.

THOMAS KINKADE: HIDDEN CHARACTER CHALLENGE!

Known as the "Painter of Light," Thomas Kinkade is one Disney's most celebrated artists having created an array of enchanting artwork. Stop by the Vista Gallery today to view his unique collection of paintings featuring some of your favorite Disney characters! Also, take the time to try and find all of the hidden Disney characters scattered throughout his paintings. Are you up to the challenge? Deck 4, Midship.

TAX FREE SHOPPING? YES, PLEASE!

That's right! Do all of your tax and duty free shopping right on board by visiting Whitecaps, Sea Treasures, and Mickey's Mainsail. Deck 3, Forward.

EVERYTHING PRINCESS AT MICKEY'S MAINSAIL

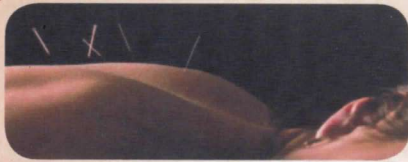
Are you cruising with a young, aspiring Princess? Stop by Mickey's Mainsail for all things Disney Princess including dresses and accessories. Whether your princess is inspired by Cinderella, Belle, Merida, or Tiana, Mickey's Mainsail has everything you need to be royal ready! Deck 3, Midship.

BLUE GALLERY LIVE AUCTION

Any art lovers onboard? Don't miss out on today's onboard Live Auction at 4:00 p.m. held in the Tube, Deck 4, where you'll have the chance to claim and take home artwork from a wide spectrum of internationally renowned artists from Blue Gallery. Also take the time to stroll through the Vista Gallery, Deck 4, and receive up to 50% off of US Retail Prices on Blue Gallery Artwork. Receive FREE artwork for being one of the first 100 Guests to attend the Live Auction!

PICK-A-PEARL WITH MAUI DIVERS

Enjoy Hawaii's most popular way to create your own jewelry when you pick-a-pearl with Maui Divers. A luminescent jewel emerges from its shell right before your eyes as you select a setting that fits your personal style. Join the excitement today at Whitecaps, Deck 3, Midship.



SENSES
SPA & SALON

ACUPUNCTURE

Acupuncture allows your body to heal itself. It is painless, deeply relaxing and rejuvenating for mind and body, and is effective for various conditions. See your onboard Acupuncture Therapist for your complimentary consultation.

Senses Spa & Salon, 7-1465

BIBBIDI BOBBIDI BOUTIQUE

Becoming the princess of your dreams creates memories for a lifetime. Where Fairy Godmothers in training are ready with Pixie Dust and Magic! Make your reservations for princess makeovers and the Pirate League today. Limited space available. Bibbidi Bobbidi Boutique is located on Deck 5, Midship, or call ext. 9438 to make a reservation.



FORMAL PORTRAITS TONIGHT!

Moon, Mural & Bow - Six guests maximum please
Grand Staircase & Minnie Statue - Groups accommodated

5:00 p.m. - 6:00 p.m.

7:15 p.m. - 8:30 p.m.

9:30 p.m. - 10:30 p.m.

*Please note that photos are available for viewing on our interactive photo kiosks approximately five hours after being taken and are only available for purchase during this cruise.

IMPORTANT INFORMATION

Security Notice

All Guests (including children) who wish to disembark the ship are required to present their Key to the World card at the gangway. A photo ID is also required for those Guests who are 18 years of age or older. Guests under the age of 18 are required to have a Parent, Guardian or other responsible adult sign an authorization form at the time it is given out if they wish to go ashore unaccompanied. Authorization forms are available at the gangways and Guest Services.

Please Note:

Please remember to use plenty of sunscreen and mosquito repellent when venturing ashore.

Cold and Flu Reminder

Please wash hands frequently and thoroughly, particularly before meals. Contact the Health Center by dialing 7-1923, should anyone in your party become ill.

Corridor Quiet Hours

As a courtesy to all our Guests, please recognize quiet hallway hours from 10:00 p.m. til 8:00 a.m.

Inclement Weather

For the safety of all Guests, outdoor events may be changed due to unforeseen weather conditions.

Environmental Message

With Disney's commitment to the Environment, please refrain from throwing anything over the Ship's side. Thank you!

No Reserved Seats Policy

As a courtesy to all our Guests, we kindly advise that the saving of seats is not permitted in the Walt Disney Theatre, and the saving of the sun loungers is not permitted on Deck 11, 12, and 13. Items left unattended will be returned to lost and found at Guest Services, Deck 3 Midship.

Smoking

For the comfort of our guests the following areas are designated as Smoking areas: - Promenade Deck (Deck 4), smoking is permitted Port Side, Aft only from 6:00 p.m. to 6:00 a.m.
- Currents - Deck 13, Forward, Port Side.
- Meridian Bar - Deck 12, Aft, Port Side, outside.
- Smoking is permitted on stateroom verandahs. Smoking is prohibited inside all guest staterooms. Guests found smoking in their staterooms will be charged a \$250 stateroom recovery fee. Electronic cigarettes may only be used in designated smoking areas.

Walt Disney Theatre

Theatrical performances may use artificial fog, strobe lights, pyrotechnics and other special effects. For the safety of our performers and the comfort of those around you, the use of any photography, video recording device or any electronic equipment is prohibited.

Verandah Safety

Please do not leave any combustible materials on your balcony when not present in your stateroom for safety reasons.

Morning	8:30	8:45	9:00	9:15	9:30	9:45	10:00	10:15	10:30	10:45	11:00	11:15	11:30	11:45	12:00	12:15	12:30	12:45	1:00	1:15	1:30															
FUNNEL VISION	A Goofy Movie (G) Funnel Vision						Aladdin (G) Funnel Vision						Movie Challenge Poolside Funnel Vision																							
BUENA VISTA THEATRE	Wreck-It Ralph (PG) Duration: 1 Hour 53 Minutes												Port & Shopping Talk																							
CHARACTER	Donald Dk 4, Balcony			Princess Gathering Lobby Atrium			Daisy Dk 4, Balcony			Minnie Dk 4, Balcony			Buzz Lobby Atrium (V)		Goofy Goofy's Sports Deck		Mickey Dk 4, Balcony		Woody Lobby Atrium (V)		Stitch Dk 4, Balcony		Phineas & Ferb Lobby Atrium (H)													
FUN FOR ALL AGES	Open House - Toddler Time It's A Small World Nursery		Walking Ship Tour Meet at Preludes		Disney Animation: Creating a Character D Lounge		Bingo Pre Sales		Diamond Jackpot Bingo D Lounge		Walking Ship Tour Meet at Preludes				Movie Challenge Poolside Deck Stage		Disney Vacation Club Group Preview The Tube																			
ADULTS	Friends of Bill W. Outlook		Boot Camp (Nom. Fee) Senses Fitness Center		Art of The Theme Show Tour Pre-Book at Guest Services		Introduction to Acupuncture Senses Spa & Salon		ESPN Dream Team Draft Day - Baseball O'Gills Pub		Club 18*21 - Lunch Royal Court		TV Tunes Trivia O'Gills Pub																							
VIBE 14-17 YEARS OLD	Youth Activities Open House						Coffee Break						Sun Deck Fun						Zombified																	
EDGE 11-14 YEARS OLD	Youth Activities Open House						Pictionary						Magic Show						Human Bingo						GAGA Ball											
OCEANEER LAB 3-12 YEARS OLD	Stitch's Adventure Squad						Human Bingo																													
OCEANEER CLUB 3-12 YEARS OLD	Youth Activities Open House and Registration						Memory Wall						Aloha Luau						Craft Corner						Lunch						Cruisin' with Crush					

Afternoon	1:45	2:00	2:15	2:30	2:45	3:00	3:15	3:30	3:45	4:00	4:15	4:30	4:45	5:00	5:15	5:30	5:45	6:00	6:15	6:30	6:45	
FUNNEL VISION	Teen Beach Movie (G) Funnel Vision												The Princess Diaries (PG) Funnel Vision									
BUENA VISTA THEATRE	Disney's Behind the Scenes: John Saade						The Lone Ranger (PG-13) Duration: 2 Hours 29 Minutes						Brave (PG) Duration: 1 Hour 41 Minutes > 7:41 p.m.									
CHARACTER	Goofy Goofy's Sports Deck		Max Sports Deck		Phineas & Ferb Lobby Atrium (H)		Pluto Goofy's Sports Deck		Minnie Preludes		Chip & Dale Dk 4, Balcony		Goofy Preludes		Minnie Preludes		Donald Dk 4, Balcony					
FUN FOR ALL AGES	Disney Trivia La Piazza		Anyone Can Cook D Lounge - Apple Strudel				Bingo Pre Sales		\$5,000 MEGA Jackpot Bingo D Lounge		Captain's Welcome Reception Lobby Atrium		Live Music with Andrea & Rafaela Lobby Atrium		Playhouse D Lounge D Lounge							
ADULTS	Diamond & Gemstone Seminar The Tube		Seminar: Improving Your Posture Senses Spa & Salon		Club 18*21 - Giant Jenga O'Gills Pub		50's and 60's Music Trivia O'Gills Pub		Know It All Trivia O'Gills Pub		Art Preview The Tube		Live Art Auction The Tube		Tequila & Margarita Tasting (21+) Ooh La La (Nom. Fee, Pre Book)							
VIBE 14-17 YEARS OLD	Zombified		Ship Factor		Dive into DJ'ing		Foosball Tournament		Scavenger Hunt		Xbox Kinect Tournament											
EDGE 11-14 YEARS OLD	Scavenger Hunt		Super Sloppy Science - Flubber		Mad Gab		Youth Activities Open House															
OCEANEER LAB 3-12 YEARS OLD	Anyone Can Cook		Disney Animation: Creating a Character		Wacky Relay Races																	
OCEANEER CLUB 3-12 YEARS OLD	Tinker Bell's Talent Show		Toy Story Boot Camp		Picture This		Wacky Relays		Dinner		Monster's Inc Open "Mike" Night		Magic Playfloor		Color Yourself Heroic							
	Games & More						Memory Wall				Wii Challenge											

Evening	7:00	7:15	7:30	7:45	8:00	8:15	8:30	8:45	9:00	9:15	9:30	9:45	10:00	10:15	10:30	10:45	11:00	11:15	11:30	11:45	12:00	
FUNNEL VISION	Gnomeo & Juliet (G) Funnel Vision						Remember the Titans (PG) Funnel Vision						Iron Man 3 (PG-13) Duration: 2 Hours 10 Minutes > 12:55 a.m.									
BUENA VISTA THEATRE	Brave (PG) Duration: 1 Hour 41 Minutes <Starts 6:00 p.m.						Brave (PG) Duration: 1 Hour 41 Minutes						Iron Man 3 (PG-13) Duration: 2 Hours 10 Minutes > 12:55 a.m.									
CHARACTER	Cinderella Preludes		Mickey Dk 4, Balcony		Goofy Dk 4, Balcony		Minnie Preludes		Minnie Dk 4, Balcony		Mickey Dk 4, Balcony											
FUN FOR ALL AGES	Captain's Welcome Reception Lobby Atrium				Club D Dance Party D Lounge		Family Superstar Karaoke D Lounge		Live Piano with Lawrence J. Blackler Lobby Atrium		Live Piano with Lawrence J. Blackler Lobby Atrium											
ADULTS	Live Guitar with Mike Archer O'Gills Pub		Pub Quiz O'Gills Pub		Majority Rules The Tube		Latin Dance Fiesta The Tube		Variety Act Lynn Trefzger Walt Disney Theatre - Ventriloquism (Doors open at 10:30 p.m.)		Latin Dance Fiesta Feat. Live Music and Guest DJ Immortal The Tube											
VIBE 14-17 YEARS OLD	Youth Activities Open House						Smoothie Time		Crowning the Couch Potato		Gender Wars		Chillin' in Vibe		Mirror, Mirror							
EDGE 11-14 YEARS OLD	Four Square		Wii Challenge		Ice Breakers		That's Hilarious		Gender Wars		GAGA Ball		Mirror, Mirror									
OCEANEER LAB 3-12 YEARS OLD	Youth Activities Open House		Disney Cruise Line Trivia		Glow Jam																	
OCEANEER CLUB 3-12 YEARS OLD	Anyone Can Cook		Detective School		Magic Playfloor																	
	Once Upon a Time		Scavenger Hunt		Heffalump Expodishun		Movie Time															
	Games and More																					

Symbol for activities that will be repeated during the cruise

Youth Activities Open House

FOLD

Fold along the dotted lines and take me with you so you don't miss any of the fun!

FOLD

IN THE SPOTLIGHT SERIES

SOLVE IT! SERIES

JUMP UP! SERIES

CREATE & INVENT SERIES

CLUBHOUSE SERIES

STORYBOOK SERIES

BUENA VISTA THEATRE

DOLBY 3D	DOLBY 3D	DOLBY 3D	DOLBY 3D
			
8:30 a.m. Duration: 1 hr 53 mins Rating: PG	3:15 p.m. Duration: 2 hrs 29 mins Rating: PG-13	6:00 p.m. & 8:15 p.m. Duration: 1 hr 41 mins Rating: PG	10:45 p.m. Duration: 2 hrs 10 mins Rating: PG-13

Character Appearances

- | | |
|--|--|
| <p>DONALD DUCK
Deck 4 Balcony, Midship
9:15 a.m., 1:45 p.m. & 6:00 p.m.</p> <p>PRINCESS GATHERING
Lobby Atrium - 10:00 a.m.</p> <p>MINNIE MOUSE
Deck 4 Balcony, Midship
10:15 a.m., 5:00 p.m.,
7:15 p.m. & 10:15 p.m.
Preludes - 4:00 p.m.,
5:45 p.m. & 9:30 p.m.</p> <p>DAISY DUCK
Deck 4 Balcony, Midship
10:45 a.m.</p> <p>PRINCESS MINNIE
Deck 4 Balcony, Midship
11:15 a.m.</p> <p>STITCH
Deck 4 Balcony, Midship
12:45 p.m.</p> <p>BUZZ LIGHTYEAR
Lobby Atrium (V)
12:45 p.m. & 2:15 p.m.</p> <p>GOOFOY
Goofy's Sports Deck
1:00 p.m. & 2:00 p.m.
Preludes - 5:15 p.m.
Deck 4 Balcony, Midship
8:15 p.m.</p> | <p>MICKEY MOUSE
Deck 4 Balcony, Midship
1:15 p.m., 5:30 p.m.,
7:45 p.m. & 9:45 p.m.</p> <p>WOODY
Lobby Atrium (V)
1:30 p.m. & 2:45 p.m.</p> <p>PHINEAS & FERB
Lobby Atrium (H)
1:30 p.m. & 2:45 p.m.</p> <p>MAX
Goofy's Sports Deck
2:30 p.m.</p> <p>PLUTO
Goofy's Sports Deck
3:00 p.m. & 4:00 p.m.</p> <p>CHIP & DALE
Deck 4 Balcony, Midship
4:30 p.m.</p> <p>CINDERELLA
Preludes - 7:15 p.m.</p> <p>ARIEL
Preludes - 8:00 p.m.</p> |
|--|--|

(H) Hallway - (S) Starboard Side - (P) Port Side - (V) Vestibule
For details of daily Disney character appearances, refer to the character line on your Navigator Grid, or the digital character board in the Lobby Atrium.

IMPORTANT NUMBERS

Fire/Security: 7-3001
Medical Emergency: 7-3000
Health Center: 7-1923

YOUTH ACTIVITIES THEMED EXPERIENCES

- CLUBHOUSE SERIES** focuses on movement and features content which appeals to younger children.
- JUMP UP! SERIES** includes large group games & movement-oriented activities.
- IN THE SPOTLIGHT SERIES** focuses on children's stage presence with lots of activities and enthusiasm.
- STORYBOOK SERIES** is designed with a strong connection to the Disney classic stories.
- CREATE & INVENT SERIES** will have a tactile focus allowing children to create and admire their work.
- SOLVE IT! SERIES** are less active, but will challenge children with problem/solutions-based activities.
- YOUTH ACTIVITIES OPEN HOUSE** A non-secured program with activities for families, adults and children of all ages to enjoy together.

SHIP DIRECTORY

YOUTH ACTIVITIES			
DISNEY'S OCEANEER CLUB	DECK 5, MID	9:00 AM - 12:00 MID	
DISNEY'S OCEANEER LAB	DECK 5, MID	9:00 AM - 1:00 AM	
EDGE	DECK 13, MID	10:00 AM - 1:00 AM	
VIBE	DECK 4, FWD	10:00 AM - 2:00 AM	
IT'S A SMALL WORLD NURSERY	DECK 5, MID	9:00 AM - 11:30 PM	
RECREATION			
AQUADUCK	DECK 12, MID	9:00 AM - 11:00 PM	
AQUALAB	DECK 12, AFT	9:00 AM - 6:00 PM	
DONALD'S POOL	DECK 11, MID	6:00 AM - 12:00 MID	
GOLF/SPORTS SIMULATORS	DECK 13, AFT	9:00 AM - 6:00 PM	
GOOFOY GOLF	DECK 13, AFT	8:00 AM - 10:00 PM	
GOOFOY'S SPORTS DECK	DECK 13, AFT	8:00 AM - 6:00 PM	
MICKEY'S POOL	DECK 11, MID	6:00 AM - 11:00 PM	
MICKEY'S SLIDE	DECK 11, MID	9:00 AM - 6:00 PM	
MIDSHIP DETECTIVE AGENCY	DECKS 2 & 5, MID	9:00 AM - 10:00 PM	
NEMO'S REEF	DECK 11, MID	9:00 AM - 6:00 PM	
PORT ADVENTURES DESK	DECK 5, MID	9:00 AM - 5:00 PM	
		7:00 PM - 10:00 PM	
QUIET COVE POOL	DECK 11, FWD	6:00 AM - 12:00 MID	
SATELLITE FALLS	DECK 13, FWD	6:00 AM - 6:00 PM	
SENSES FITNESS CENTER	DECK 11, FWD	6:30 AM - 10:00 PM	
GENERAL INFORMATION			
ARR-CADE	DECK 11, AFT		24 HOURS
ADVENTURES BY DISNEY	DECK 4, MID	12:00 PM - 3:00 PM	
DISNEY VACATION CLUB	DECK 4, MID	2:30 PM - 10:00 PM	
FUTURE CRUISE SALES DESK	DECK 4, MID	10:00 AM - 12:00 PM	
		2:00 PM - 6:00 PM	
		7:30 PM - 8:30 PM	
GUEST SERVICES	DECK 3, MID		24 HOURS
MEDICAL HEALTH CENTER	DECK 1, FWD	9:30 AM - 11:00 AM	
		4:30 PM - 7:00 PM	
PORT & SHOPPING DESK	DECK 4, MID	7:30 PM - 8:30 PM	
PRELUDES	DECK 3, FWD	2:30 PM - 3:15 PM	
		5:45 PM - 6:30 PM	
		8:00 PM - 8:45 PM	
SENSES SPA AND SALON	DECK 11, FWD	8:00 AM - 10:00 PM	
SHUTTERS PHOTO GALLERY	DECK 4, MID	10:00 AM - 12:30 PM	
		7:30 PM - 11:00 PM	
SHUTTERS DIGITAL	DECK 4, MID		24 HOURS
SHOPPING			
BIBBIDI BOBBIDI BOUTIQUE	DECK 5, MID	9:00 AM - 9:00 PM	
MICKEY'S MAINSAIL	DECK 3, FWD	9:30 AM - 11:00 PM	
QUACKS	DECK 11, MID	10:00 AM - 4:00 PM	
SEA TREASURES	DECK 3, FWD	9:30 AM - 11:00 PM	
VISTA GALLERY	DECK 4, MID	10:00 AM - 10:00 PM	
WHITECAPS	DECK 3, FWD	9:30 AM - 11:00 PM	
WHOZITS & WHATZITS	DECK 11, MID	10:00 AM - 4:00 PM	

DINNER MENU	Animator's Palate: Pacific Rim Cuisine	DRINK OF THE DAY	Bahama Mama (Alcoholic)	WEATHER FORECAST	Monday: Overcast
	Enchanted Garden: Continental Market Cuisine		Coco Bali (Non Alcoholic)		High: 79 F/26 C
	Royal Court: French Cuisine				Tuesday: Overcast
Dining Times: 5:45 p.m. & 8:15 p.m.				High: 82 F/28 C	

Evening Attire: Formal

DINING & LOUNGES

BREAKFAST			
CABANAS CONTINENTAL	DECK 11, AFT	7:00 AM - 7:30 AM	
CABANAS	DECK 11, AFT	7:30 AM - 11:30 AM	
ENCHANTED GARDEN	DECK 2, MID	8:30 AM - 10:45 AM	
ROYAL COURT	DECK 3, MID	8:00 AM - 9:30 AM	
LUNCH			
CABANAS	DECK 11, AFT	11:30 AM - 2:00 PM	
FILLMORE'S FAVORITES	DECK 11, MID	11:00 AM - 6:00 PM	
LUIGI'S PIZZA	DECK 11, MID	11:00 AM - 6:00 PM	
ROYAL COURT	DECK 3, MID	12:00 PM - 1:30 PM	
TOW MATER'S GRILL	DECK 11, MID	11:00 AM - 11:00 PM	

DINNER			
ANIMATOR'S PALATE	DECK 3, AFT	5:45 PM & 8:15 PM	
ENCHANTED GARDEN	DECK 2, MID	5:45 PM & 8:15 PM	
ROYAL COURT	DECK 3, MID	5:45 PM & 8:15 PM	
CABANAS TABLE SERVICE	DECK 11, AFT	6:30 PM - 8:30 PM	
PALO (18+) (RESERVATIONS REQ. & NOM. FEE APPLIES)	DECK 12, AFT	6:00 PM - 8:30 PM	
REMY (18+) (RESERVATIONS REQ. & NOM. FEE APPLIES)	DECK 12, AFT	6:00 PM - 8:30 PM	

LATE NIGHT SNACKS			
LA PIAZZA (18+)	DECK 4, AFT	10:45 PM - 11:45 PM	
LUIGI'S PIZZA	DECK 11, MID	9:30 PM - 12:30 AM	

ADDED FEATURES			
BEVERAGE STATION	DECK 11, MID		24 HOURS
EYE SCREAM	DECK 11, MID	11:00 AM - 11:00 PM	
ROOM SERVICE	DIAL 0		24 HOURS

ENTERTAINMENT - LOUNGES - BARS			
Adults must be 21 and older to consume alcoholic beverages.			
BON VOYAGE	DECK 3, MID	9:00 AM - 11:00 PM	
COVE BAR (18+)	DECK 11, FWD	10:00 AM - 11:00 PM	
COVE CAFE (18+)	DECK 11, FWD	7:00 AM - 12:00 MID	
CURRENTS (18+)	DECK 13, FWD	10:00 AM - 11:00 PM	
D LOUNGE	DECK 4, MID		SHOWTIMES
FROZEN TREATS	DECK 11, MID	10:00 AM - 10:00 PM	
LA PIAZZA	DECK 4, AFT	3:00 PM - 12:00 MID	
MERIDIAN (18+)	DECK 12, AFT	10:00 AM - 12:00 MID	
O'GILLS PUB (18+ AFTER 9:00 A.M.)	DECK 4, AFT	12:00 PM - 12:00 MID	
OOH LA LA (18+)	DECK 4, AFT	5:30 PM - 12:00 MID	
OUTLOOK	DECK 14, MID		SUNSET TIMES
SKYLINE (18+)	DECK 4, AFT	5:30 PM - 12:00 MID	
THE TUBE (18+)	DECK 4, AFT	10:00 PM - 2:00 AM	
VISTA CAFE	DECK 4, MID	7:30 AM - 11:00 PM	
WAVES	DECK 12, AFT	10:00 AM - 6:00 PM	

Consumers who order raw or partially cooked, ready-to-eat food of animal origin, are hereby informed that the food is not sufficiently cooked to ensure its safety.

GOOFOY'S SPORTS

Digital Simulators

 <p>Sports Simulator (Basketball, Baseball, Hockey, Football or Soccer) \$12 / half hr, \$20 / hr</p>	 <p>Golf Simulator \$25 / half hr, \$45 / hr.</p>
---	---

Reservations can be made at the Port Adventures Desk, Deck 5, Midship or at the Simulators, Deck 13, Aft.