

PERSONAL NAVIGATOR



SUNDAY, JULY 28, 2013

Sunrise: 6:29 a.m. Sunset: 7:37 p.m.
 Evening Attire: Cruise Casual
 All Ashore: 8:30 a.m.
 All Aboard: 5:00 p.m.
 Sunday: Overcast High: 79°F/26°C
 Monday: Overcast High: 79°F/26°C

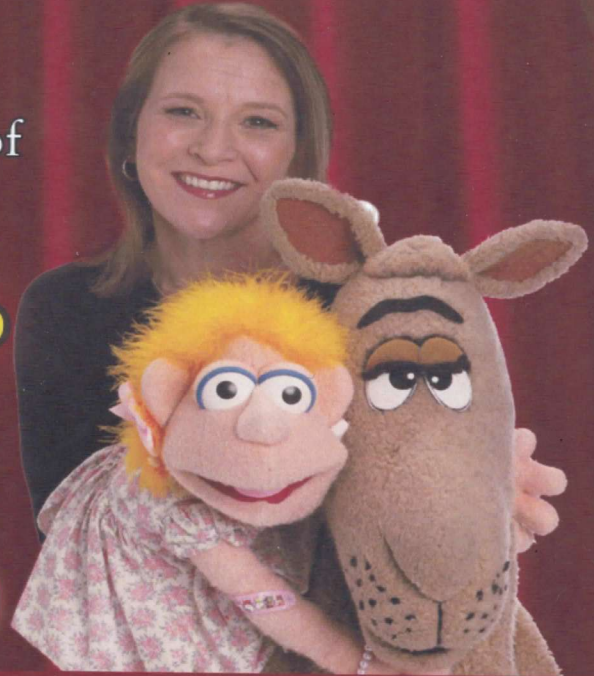
DISNEY'S CASTAWAY CAY


SHOWTIME

featuring the comedy & ventriloquism of

Lynn Trefzger

Walt Disney Theatre
 Deck 3 & 4, Forward
 6:15 p.m. & 8:30 p.m.



 Assistance available at the entrance to the Walt Disney Theatre 30 minutes prior to show time.

Disney's Castaway Cay

Reserved exclusively for Guests on Disney Cruise Line Bahamian and Caribbean cruise vacations, Castaway Cay is Disney's private port-of-call paradise. On this island, enjoy tropical leisure activities, such as snorkeling, boating, swimming and sunbathing.

Friendly Reminders

- You will need your Key To The World Card for all transactions on Disney's Castaway Cay except for the Post Office.
- For your convenience, beach towels are available as you leave the ship; please return them at the gangway at the end of your day.
- Serenity Bay is reserved for Guests 18 and older.
- A limited number of all-terrain wheelchairs across from Scuttle's Cove.
- Due to our commitment to the environment, we ask that seashells, coral and other natural treasures be left undisturbed at Disney's Castaway Cay for all to enjoy.



Tune IN and rock with us at this new family dance party! Spread the word, there will be cool music, new dances, contests and a chance to win great prizes!

D Lounge,
 Deck 4, Midship,
 10:15 p.m.

Don't Miss:

The Disney Fantasy's Whistle

Will be played at 5:15 p.m. today as we set sail from Castaway Cay
 The Disney Fantasy's whistle, a prominent element of the "Sailing Away" deck party at the start of the cruise, is quite the musical talent. It's able to perform not just the first musical line of "When You Wish Upon a Star" but also the second line of the song ("makes no difference who you are") plus several measures of "Yo Ho (A Pirate's Life for Me)," "It's a Small World," "Be Our Guest," "Hi Diddle Dee Dee (An Actor's Life for Me)" and "A Dream is a Wish."

runDisney: Castaway Cay 5K (12+)

Meet in The Tube - 8:00 a.m., Deck 4, Aft (Departs at 8:30 a.m.)
 Runners meet in The Tube, Deck 4, Aft, at 8:00 a.m. (12+). We will depart the ship at 8:30 a.m. and make our way to the Bike Rentals where the run will begin.

Crab Races

Island Gazebo 1, Disney's Castaway Cay, - 11:45 a.m.
Island Gazebo 2, Disney's Castaway Cay, - 12:45 p.m.
 Watch some local sea creatures make a break for the finish line.

Family Superstar Karaoke

D Lounge, Deck 4, Midship - 10:45 p.m.
 Join your Cruise Staff in D Lounge tonight and sing along to your favorite song - fun for everyone.



Please check your tour tickets for meeting times and locations. Visit the Port Adventures Desk, Deck 5, Midship for any questions.

DINNER MENU

Animator's Palate: Pacific Rim Cuisine
 Enchanted Garden: Continental Market Cuisine
 Royal Court: French Cuisine

DRINK OF THE DAY

Stingray (Alcoholic)
 Parrot Song (Non Alcoholic)

IMPORTANT NUMBERS

Fire/Security: 7-3001
 Medical Emergency: 7-3000
 Health Center: 7-1923

FUN FOR ALL AGES HIGHLIGHTS

RUNDISNEY: CASTAWAY CAY 5K (12+)

Meet in *The Tube* - 8:00 a.m., Deck 4, Aft (Departs at 8:30 a.m.)
Runners meet in *The Tube*, Deck 4, Aft, at 8:00 a.m. (12+). We will depart the ship at 8:30 a.m. and make our way to the Bike Rentals where the run will begin.

ISLAND POWER WALK

Meet on the pier by the showers, - 9:30 a.m. (Departs at 9:45 a.m.)
Join your Cruise Staff for a brisk walk around the island. Meet outside, on the pier by the showers. Meet time is 9:30 a.m., Walk leaves promptly at 9:45 a.m.

BEACH VOLLEYBALL

Sports Beach, Disney's Castaway Cay - 11:00 a.m.
Have some fun in the sand and join in a game of beach volleyball.

FAMILY WHALE DIG

Monstro Point, Disney's Castaway Cay, - 1:00 p.m.
Our island paleontologist leads us in the excavation of a giant whale skeleton and other fossilized treasures! Make no bones about it, this is an adventure every beachcomber is sure to dig!

DISNEY VACATION CLUB GROUP PREVIEW

The Tube, Deck 4, Aft - 4:30 p.m.
Want to learn more about taking magical vacations year after year? Please see a Disney Vacation Club representative on Deck 4, Midship, or call 7-2805 from your stateroom phone for more information about our interactive group presentation.

PLAYHOUSE D LOUNGE

D Lounge, Deck 4, Midship - 5:00 p.m.
Calling our youngest of cruisers! Here is a special playtime that is just for you. Come meet new friends; and join in on the fun as your Cruise Staff team takes you through interactive activities made just for you!

DISNEY TRIVIA

D Lounge, Deck 4, Midship - 9:45 p.m.
Navigate your way through another round of questions to test how much you really know about Disney.



ADULT ACTIVITY HIGHLIGHTS



SENSES SPA FITNESS CLASSES & SEMINARS

Sunrise Stretch - Donald's Pool - 7:00 a.m.
Body Sculpt Boot Camp (Nom. Fee) - Senses Fitness Center - 8:00 a.m.
Yoga on the Beach - Serenity Bay - 11:00 a.m.
Fab Abs - Donald's Pool - 7:30 a.m.; Senses Fitness Center - 5:00 p.m.

TASTING CLASSES

Beer Tasting (21+) - O'Gills Pub (Nom. Fee, Pre Book) - 4:30 p.m.
Please make reservations for tastings at Guest Services for a nominal fee.
Tasting Seminars are only for Guests 21 and Older.

CLUB 18*21 - BASKETBALL FREE THROW
In Da Shade Game Pavilion, - 1:00 p.m.

CLUB 18*21 - MIXER
O'Gills Pub, Deck 4, Aft - 10:00 p.m.

PUB QUIZ

O'Gills Pub, Deck 4, Aft - 6:30 p.m. & 8:45 p.m.
Join us as we test your knowledge against your fellow Guests at our Pub Quiz challenge.

THE QUEST

The Tube, Deck 4, Aft - 10:00 p.m.
Enjoy the wildest and wackiest scavenger team event on the seven seas!

70'S REMIX WITH GUEST DJ IMMORTAL

The Tube, Deck 4, Aft - 11:00 p.m.
Hold onto the handrails as we take you underground with our Guest DJ Immortal.

MEGA RAFFLE JACKPOT BINGO

D Lounge, Deck 4, Midship

Card Sales - 7:15 p.m.

Game Starts - 7:30 p.m.

Join your Cruise Staff for family Bingo fun! Four cash prize games and great raffle prize packs to be won. Plus free Disney goodies for all in attendance! Don't miss out on the fun!

YOUTH ACTIVITY HIGHLIGHTS

DINE & PLAY

A convenience for families dining at 8:15 p.m., our Youth Activities Counselors will be available at 9:15 p.m. at the entrance of Royal Court, Enchanted Garden and Animator's Palate dining rooms to bring registered children to join the fun in the Youth Activity areas.



Deck 5, Midship (7-1440)
(3-12 years old) 4:30 p.m. - 12:00 mid

BIG TOP FUN FEST!

6:00 p.m.
It's the greatest show on Earth. Come re-discover the circus Disney style with clowns, jugglers and classic Disney cartoons.

SO YOU WANT TO BE A PIRATE?

8:15 p.m.
Have you learned about life on the high seas? Do you have what it takes to be a pirate? Join Captain Hook and friends to find out!



Deck 5, Midship (7-1445)
(3-12 years old) 4:00 p.m. - 12:00 mid

STITCH'S ADVENTURE SQUAD

7:30 p.m.
Stitch, everyone's favorite alien, is making an appearance to share some of his mischievous games and activities.

SUPER SLOPPY SCIENCE

8:15 p.m.
Join Professor Make-O-Mess in some of the most extreme experiments you will ever see in the world of Super Sloppy Science!



Deck 13, Midship (7-9743)
(11-14 years old) 4:30 p.m. - 12:00 mid

DISNEY ANIMATION: PERSISTENCE OF VISION

6:00 p.m.
Go behind the scenes at Walt Disney Animation Studios and learn the principles that make animation work, and try your hand at creating your own easy animation demonstration in this fun and fascinating enrichment program.

THAT'S HILARIOUS

9:30 p.m.
Ever wanted to show off your comedy skills? Then be a part of the cast for the crazy improv show "That's Hilarious" and put on a live show for your friends.



Entrance on Deck 4, Forward (7-9418)
(14-17 years old) 4:30 p.m. - 1:00 a.m.

CAPTURE THE FLAG

2:00 p.m.
This fast-paced field game teams kids up and challenges them to use strategy, speed, and skill. Which team will be most successful as they Capture The Flag of their opponent and win the game?

DREAM NOW! SEA HOW! - ANIMAL, SCIENCE AND ENVIRONMENT

3:30 p.m.
Ever wonder how man and animal connect and live in harmony? In an interactive session you will dive into their background, education, mentors, and the dream that lead them on their path toward working with animals.

BUENA VISTA THEATRE

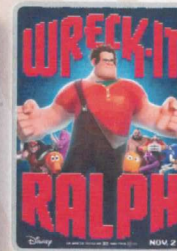
Today's Movies

DOLBY 3D

OC - Open Captioning



8:00 a.m.
Duration:
1 hr 41 mins
Rating: PG



10:00 a.m.
Duration:
1 hr 53 mins
Rating: PG



12:15 p.m.
Duration:
2 hrs 10 mins
Rating: PG-13

DOLBY 3D

DOLBY 3D



2:45 p.m.
Duration:
2 hrs 7 mins
Rating: PG



5:15 p.m. & 8:00 p.m.
Duration:
2 hrs 22 mins
Rating: PG-13



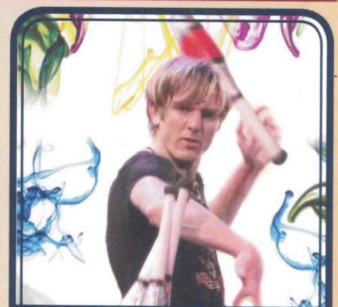
10:45 p.m.
Duration:
2 hrs 29 mins
Rating: PG-13



FAMILY DANCE PARTY

Tune IN and rock with us at this new family dance party! Spread the word, there will be cool music, new dances, contests and a chance to win great prizes!

*D Lounge,
Deck 4, Midship,
10:15 p.m.*



ADULT VARIETY ACT

Featuring the Comedy & Juggling of Mike Price, as he entertains you in this adult exclusive show.

*The Tube (18+),
Deck 4, Aft,
10:30 p.m.*

YOUTH ACTIVITIES OPEN HOUSE

Open House is an opportunity for all to come and participate in a variety of exciting activities and free time in the Oceaneer Club, Oceaneer Lab, It's A Small World Nursery, Vibe and Edge throughout the cruise. During these times secured programming will still be offered in the other venue for those looking to check their children into care.

Disney's Oceaneer Lab: 12:00 p.m. - 4:30 p.m.
Disney's Oceaneer Club: 9:30 a.m. - 12:00 p.m.
Vibe: 9:45 p.m. - 10:15 p.m.

MORE TO ENJOY WHILE ONBOARD

PORT & SHOPPING INFORMATION

Learn all about San Juan and St. Thomas, the most famous tax & duty free shopping port in the world. Don't miss tomorrow's Port & Shopping Show in the Buena Vista Theatre at 11:30 a.m. Over \$1000 in Give-A-Ways! Meet your Shopping Guide, Candice at her Desk, Deck 4, Midship 7:30 p.m. - 8:30 p.m. tonight.

PLAN YOUR NEXT CRUISE

Another Disney Cruise Line vacation is in your future! Book a future cruise today and you'll save 10%, receive up to a \$200 onboard credit, and pay a reduced deposit! Visit the Future Cruise Sales Desk, Deck 4, Midship, Book by 8:30 p.m. Monday for a chance to win \$100 Onboard Credit for this cruise!

DISNEY VACATION CLUB® GROUP PREVIEW

Want to learn more about taking magical vacations year after year? Please see a Disney Vacation Club representative on Deck 4, Midship, or call 7-2805 from your stateroom phone for more information about our interactive group presentation.



Disney CRUISE LINE. PORT ADVENTURES

Welcome to Disney's Island Paradise Castaway Cay. Today is the day to relax in an inner tube, snorkel in the Caribbean blue, get up-close and personal to real life stingrays or fly high in the sky on a parasail excursion during a breathtaking aerial adventure. Visit Marge's Barges or one of the rental locations and our friendly team will assist in making any last minute bookings.

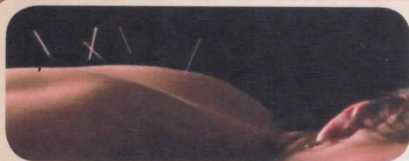
PORT ADVENTURES MEETING TIMES AND LOCATIONS

| | | |
|---------------|--------------------------------------|----------------|
| As per ticket | Castaway Ray's Stingray Adventure | Stingray Hut |
| As per ticket | Castaway Cay Bottom Fishing | Marge's Barges |
| As per ticket | Glass Bottom Boat | Marge's Barges |
| As per ticket | Nature Walk and Kayaking | As per ticket |
| As per ticket | Parasailing | Marge's Barges |
| As per ticket | Seahorse Catamaran Snorkel Adventure | Marge's Barges |
| 9:30 a.m. | Teen Wild Side | Vibe |
| As per ticket | Watercraft Ski Adventure | Boat Beach |

CASTAWAY CAY ISLAND RENTALS

| | | |
|-----------------|-----------------------|--|
| Bicycles | 9:30 a.m. - 4:00 p.m. | Near Cookies Too / Windsock |
| Boats | 9:30 a.m. - 4:00 p.m. | Boat Beach |
| Snorkeling Gear | 9:30 a.m. - 3:30 p.m. | Gil's Fins and Boats / Flippers and Floats |
| Float | 9:30 a.m. - 3:30 p.m. | Gil's Fins and Boats / Flippers and Floats |
| Getaway Package | 9:30 a.m. - 3:30 p.m. | Gil's Fins and Boats / Flippers and Floats |

Reservations can be made on the island at each rental location. Castaway Ray's walk up reservations can be made at Gil's Fins and Boats on Family Beach.



SENSES
SPA & SALON

ACUPUNCTURE

Acupuncture allows your body to heal itself. It is painless, deeply relaxing and rejuvenating for mind and body, and is effective for various conditions. See your onboard Acupuncture Therapist for your complimentary consultation. Senses Spa & Salon, 7-1465

VISTA GALLERY

Your last opportunity to purchase your Disney art. Shipping available. Stop by the Vista Gallery, Deck 4, Midship, to find out more. 6:00 p.m. - 10:00 p.m.



Shutters

GET THE PICTURE!

Ask a friendly photographer about Get the Picture! Plus the incredible value of an unlimited digital photo package, which includes all of your stateroom's photos. Visit Shutters today, as supplies are limited. *Terms and conditions apply. Photos captured on your vacation are only available for purchase during this cruise.

*Please note that photos are available for viewing on our interactive photo kiosks approximately five hours after being taken and are only available for purchase during this cruise.

SHOPPING

FRAGRANCE OF THE DAY

Stop by Whitecaps to test our selected fragrance today! Deck 3, Forward.

CELEBRATING 15 YEARS WITH DISNEY CRUISE LINE

Happy Anniversary, Disney Cruise Line! Disney Cruise Line is celebrating its 15th year with an assortment of special edition items such as graphic tees, photo albums, and more! Available for a limited time only, swing by Sea Treasures and pick up your own commemorative item! Deck 3, Midship.

MAUI DIVERS FINE ISLAND JEWELRY TRUNK SHOW

With most of Maui Divers' jewelry created in beautiful Honolulu, you can be sure your island memories are captured in an authentic piece of paradise. Choose from fragrant plumerias, Hawaiian honu (turtles), and more. Available at Whitecaps, Deck 3, Midship.

UNIQUE DISNEY ART AT THE VISTA GALLERY

Stop by the Vista Gallery to view original artwork by a variety of celebrated Disney artists featuring some of your favorite Disney characters. Also check out unique Disney art painted on original dessert plates from the Animator's Palate Restaurants on the Disney Magic® Cruise Ship and Disney Wonder® Cruise Ship. Created by popular Disney artists, Mark Seppala and Joe Kaminski, these one-of-a-kind plates are available exclusively on Disney Cruise Line® while supplies last. Deck 4, Midship.

HELPFUL SHOPPING TIP

Avoid getting sand and water on your souvenirs by placing your newly purchased items from Castaway Cay on hold at She Sells Seashells and Everything Else and at Buy the Seashore. Your items will then be delivered to Whitecaps on Deck 3 for pick up.

Due to port regulations, when the ship is docked, the stores will remain closed.

IMPORTANT INFORMATION

Security Notice

All Guests (including children) who wish to disembark the ship are required to present their Key to the World card at the gangway. A photo ID is also required for those Guests who are 18 years of age or older. Guests under the age of 18 are required to have a Parent, Guardian or other responsible adult sign an authorization form at the time it is given out if they wish to go ashore unaccompanied. Authorization forms are available at the gangways and Guest Services.

Please Note:

Please remember to use plenty of sunscreen and mosquito repellent when venturing ashore.

Cold and Flu Reminder

Please wash hands frequently and thoroughly; particularly before meals. Contact the Health Center by dialing 7-1923, should anyone in your party become ill.

Corridor Quiet Hours

As a courtesy to all our Guests, please recognize quiet hallway hours from 10:00 p.m. til 8:00 a.m.

Inclement Weather

For the safety of all Guests, outdoor events may be changed due to unforeseen weather conditions.

Environmental Message

With Disney's commitment to the Environment, please refrain from throwing anything over the Ship's side. Thank you!

No Reserved Seats Policy

As a courtesy to all our Guests, we kindly advise that the saving of seats is not permitted in the Walt Disney Theatre, and the saving of the sun loungers is not permitted on Deck 11, 12, and 13. Items left unattended will be returned to lost and found at Guest Services, Deck 3 Midship.

Smoking

For the comfort of our guests the following areas are designated as Smoking areas: - Promenade Deck (Deck 4), smoking is permitted Port Side, Aft only from 6:00 p.m. to 6:00 a.m. - Currents - Deck 13, Forward, Port Side. - Meridian Bar - Deck 12, Aft, Port Side, outside. - Smoking is permitted on stateroom verandahs. - Smoking is prohibited inside all guest staterooms. Guests found smoking in their staterooms will be charged a \$250 stateroom recovery fee. Electronic cigarettes may only be used in designated smoking areas.

Walt Disney Theatre

Theatrical performances may use artificial fog, strobe lights, pyrotechnics and other special effects. For the safety of our performers and the comfort of those around you, the use of any photography, video recording device or any electronic equipment is prohibited.

Verandah Safety

Please do not leave any combustible materials on your balcony when not present in your stateroom for safety reasons.

| Morning | 8:30 | 8:45 | 9:00 | 9:15 | 9:30 | 9:45 | 10:00 | 10:15 | 10:30 | 10:45 | 11:00 | 11:15 | 11:30 | 11:45 | 12:00 | 12:15 | 12:30 | 12:45 | 1:00 | 1:15 | 1:30 | | | | | | | | | | | | | | | | | |
|--|---|------|-----------------------------|------|-------------------------|------|---|-------|--------------------|-------|-----------------|-------|--|-------|---------------------|-------|--------------------------------|-------|---|------|---|--|----------------------|--|------------------------------|--|--|--|--|--|---------------------|--|--|--|--|--|--|--|
| FUNNEL VISION | Lilo & Stitch (PG) Funnel Vision | | | | | | Cars (G) Funnel Vision | | | | | | Finding Nemo (G) Funnel Vision | | | | | | | | | | | | | | | | | | | | | | | | | |
| BUENA VISTA THEATRE | Brave DOLBY 3D (PG) Duration: 1 Hour 41 Minutes < Starts at 8:00 a.m. | | | | | | Wreck-It Ralph CC (PG) - With Open Captioning Duration: 1 Hour 53 Minutes | | | | | | Iron Man 3 (PG-13) Duration: 2 Hours 10 Minutes > 2:25 p.m. | | | | | | | | | | | | | | | | | | | | | | | | | |
| CHARACTER | Donald Post Office | | Jack Sparrow Marge's Barges | | Chip & Dale Post Office | | Minnie Scuttles Cove | | Donald Post Office | | Mickey Rustmore | | Jack Sparrow Post Office | | Goofy Scuttles Cove | | Character Dance Party Gazebo 1 | | | | | | | | | | | | | | | | | | | | | |
| FUN FOR ALL AGES | Meet in The Tube @ 8:00 a.m. (Departs at 8:30 a.m.) (12+) | | | | | | Island Power Walk Meet on the pier by the showers (Departs at 9:45 a.m.) | | | | | | Crab Races Gazebo 1 | | | | | | Live Guitar Gazebo 2 | | Crab Races Gazebo 2 | | Live Guitar Gazebo 1 | | | | | | | | | | | | | | | |
| | Interdenominational Service Outlook | | | | | | Youth Activities Open House Disney's Oceaneer Club | | | | | | Beach Volleyball Sports Beach | | | | | | Basketball Free Throw In Da Shade Game Pavilion | | Family Whale Dig Monstro Point, Disney's Castaway Cay | | | | | | | | | | | | | | | | | |
| ADULTS | Friends of Bill W. Outlook | | | | | | Yoga on the Beach Serenity Bay | | | | | | Club 18*21 - Basketball Free Throw In Da Shade Game Pavilion | | | | | | | | | | | | | | | | | | | | | | | | | |
| Books and Magazines available in Cove Cafe | | | | | | | | | | | | | | | | | | | | | | | | | | | | | | | | | | | | | | |
| VIBE 14-17 YEARS OLD | Meet At Teen Hideout | | | | | | Beach Volleyball | | | | | | Ping Pong | | | | | | Sand Soccer | | | | | | | | | | | | | | | | | | | |
| EDGE 11-14 YEARS OLD | Meet At Marge's Barges | | | | | | Meet At In Da Shade | | | | | | Sand Soccer | | | | | | Lunch at Cookies Too | | | | | | Pelican Plunge | | | | | | | | | | | | | |
| SCUTTLES COVE | Sand Crafts Scuttles Cove | | | | | | The Dig at Monstro's Point Scuttles Cove | | | | | | Water Relays Scuttles Cove | | | | | | The Dig at Monstro's Point Scuttles Cove | | | | | | Fun In the Sun Scuttles Cove | | | | | | Lunch Scuttles Cove | | Vacation Crafts Scuttles Cove, Disney's Castaway Cay | | | | | |
| OCEANEER LAB 3-12 YEARS OLD | Youth Activities Open House | | | | | | | | | | | | | | | | | | | | | | | | | | | | | | | | | | | | | |
| OCEANEER CLUB 3-12 YEARS OLD | Youth Activities Open House | | | | | | | | | | | | | | | | | | | | | | | | | | | | | | | | | | | | | |

| Afternoon | 1:45 | 2:00 | 2:15 | 2:30 | 2:45 | 3:00 | 3:15 | 3:30 | 3:45 | 4:00 | 4:15 | 4:30 | 4:45 | 5:00 | 5:15 | 5:30 | 5:45 | 6:00 | 6:15 | 6:30 | 6:45 | | | | | | |
|------------------------------|--|------|-------------------------|------|--------------------------------------|------|---|------|------|------|-----------------------------|------|--|------|-----------------------------|------|-------------------------------|------|--|------|------|--|----------------------|--|--|--|--|
| FUNNEL VISION | Toy Story 3 (G) Funnel Vision | | | | | | Cars 2 (G) Funnel Vision | | | | | | Up (PG) Funnel Vision | | | | | | | | | | | | | | |
| BUENA VISTA THEATRE | Iron Man 3 (PG-13) Duration: 2 Hours 10 Minutes < Starts 12:15 p.m. | | | | | | Oz The Great and Powerful DOLBY 3D (PG) Duration: 2 Hours 7 Minutes | | | | | | The Avengers DOLBY 3D (PG-13) Duration: 2 Hours 22 Minutes > 7:38 p.m. | | | | | | | | | | | | | | |
| CHARACTER | Chip & Dale Gangway | | Hook & Smee Gangway | | Daisy Gangway | | Hook & Smee Dk 4, Balcony | | | | | | Chip & Dale Dk 4, Balcony | | Donald Lobby Atrium (V) | | | | | | | | | | | | |
| FUN FOR ALL AGES | Midship Detective Agency Deck 2 & 5 | | | | | | Family Crafts - Button Making La Piazza | | | | | | Live Piano with Lawrence J. Blackler Lobby Atrium | | | | | | Comedy & Ventriloquism of Lynn Trefzger Walt Disney Theatre | | | | | | | | |
| | Board Games Available in O'Gills Pub | | | | | | | | | | | | Disney Vacation Club Group Preview The Tube | | Playhouse D Lounge D Lounge | | Fab Abs Senses Fitness Center | | | | | | Pub Quiz O'Gills Pub | | | | |
| ADULTS | Beer Tasting (21+) O'Gills Pub (Nom. Fee, Pre Book) | | | | | | Check Out The Navigator You Created! Youth Activities Open House | | | | | | Open House | | | | | | | | | | | | | | |
| VIBE 14-17 YEARS OLD | Sand Soccer | | Capture the Flag | | Check Out The Navigator You Created! | | | | | | Open House | | | | | | | | | | | | | | | | |
| EDGE 11-14 YEARS OLD | Pelican Plunge | | Hangin' at Teen Hideout | | Check Out The Navigator You Created! | | | | | | Youth Activities Open House | | | | | | | | | | | | | | | | |
| SCUTTLES COVE | Caribbean Beach Party Scuttles Cove, Disney's Castaway Cay | | | | | | Sand Soccer Scuttles Cove, Disney's Castaway Cay | | | | | | Open for Secured Activities | | | | | | Dinner | | | | | | | | |
| OCEANEER LAB 3-12 YEARS OLD | Open for Secured Activities | | | | | | | | | | | | | | | | | | | | | | | | | | |
| OCEANEER CLUB 3-12 YEARS OLD | Youth Activities Open House | | | | | | Open For Secured Activities | | | | | | Dinner | | | | | | Picture This | | | | | | | | |

| Evening | 7:00 | 7:15 | 7:30 | 7:45 | 8:00 | 8:15 | 8:30 | 8:45 | 9:00 | 9:15 | 9:30 | 9:45 | 10:00 | 10:15 | 10:30 | 10:45 | 11:00 | 11:15 | 11:30 | 11:45 | 12:00 |
|------------------------------|--|------|--|------|----------------------|------|---|------|---|------|---|------|--|-------|--------------------------|-------|----------------------|-------|------------|-------|-------|
| FUNNEL VISION | The Muppets (PG) Funnel Vision | | | | | | Old Dogs (PG) Funnel Vision | | | | | | | | | | | | | | |
| BUENA VISTA THEATRE | The Avengers DOLBY 3D (PG-13) Duration: 2 Hours 22 Minutes | | | | | | The Lone Ranger (PG-13) Duration: 2 Hours 29 Minutes > 1:14 a.m. | | | | | | | | | | | | | | |
| CHARACTER | Pluto Lobby Atrium (V) | | Goofy Preludes | | Tiana Preludes | | Goofy Lobby Atrium (V) | | | | | | Mickey Lobby Atrium (V) | | Snow White Dk 4, Balcony | | | | | | |
| FUN FOR ALL AGES | Bingo Pre Sales | | Comedy & Ventriloquism of Lynn Trefzger Walt Disney Theatre | | | | | | Disney Trivia D Lounge | | D Lounge | | Family Superstar Karaoke D Lounge | | | | | | | | |
| | Family Dance Party with DJ Immortal The Tube | | Live Music with Ash & Hannah La Piazza | | | | | | Live Music with Andrea & Rafaela Lobby Atrium | | Live Music with Andrea & Rafaela Lobby Atrium | | | | | | | | | | |
| ADULTS | Live Guitar with Mike Archer O'Gills Pub | | Pub Quiz O'Gills Pub | | The Quest The Tube | | Club 18*21 - Mixer O'Gills Pub | | Variety Act Mike Price The Tube - Juggling | | 70's Remix with Guest DJ Immortal The Tube | | Live Music with Ash & Hannah La Piazza | | | | | | | | |
| VIBE 14-17 YEARS OLD | Youth Activities Open House | | | | | | Smoothie Time | | Check Out The Navigator You Created! | | | | | | | | | | | | |
| EDGE 11-14 YEARS OLD | That's Hilarious | | Check Out The Navigator You Created! | | | | | | Ship Factor | | Check Out The Navigator You Created! | | | | | | | | | | |
| OCEANEER LAB 3-12 YEARS OLD | Anyone Can Cook | | Get the Hook | | Super Sloppy Science | | Magic Playfloor | | GAGA Ball | | | | | | | | | | | | |
| OCEANEER CLUB 3-12 YEARS OLD | Wii Challenge | | Jenga | | Disney Crafts | | Craft Corner | | | | | | Make Your Own Wand | | Magic Playfloor | | Pluto's Pajama Party | | Movie Time | | |
| OCEANEER CLUB 3-12 YEARS OLD | Big Top Fun Fest! | | Games & More | | | | | | | | | | | | | | | | | | |

Symbol for activities that will be repeated during the cruise



Youth Activities Open House



FOLD



FOLD



Fold along the dotted lines and take me with you so you don't miss any of the fun!

FOLD



IN THE SPOTLIGHT SERIES



SOLVE IT! SERIES



JUMP UP! SERIES



CREATE & INVENT SERIES



CLUBHOUSE SERIES



STORYBOOK SERIES



BUENA VISTA THEATRE



| | | | | | |
|--|---|---|--|--|---|
| 8:00 a.m. Duration: 1 hr 41 mins Rating: PG | 10:00 a.m. Duration: 1 hr 53 mins Rating: PG | 12:15 p.m. Duration: 2 hrs 10 mins Rating: PG-13 | 2:45 p.m. Duration: 2 hrs 7 mins Rating: PG | 5:15 p.m. & 8:00 p.m. Duration: 2 hrs 22 mins Rating: PG-13 | 10:45 p.m. Duration: 2 hrs 29 mins Rating: PG-13 |
|--|---|---|--|--|---|

Character Appearances

DONALD DUCK

Post Office, Disney's Castaway Cay
9:30 a.m. & 10:30 a.m.
Lobby Atrium (V)
5:45 p.m.

DAISY DUCK

Gangway - 9:30 a.m.,
10:30 a.m. & 3:30 p.m.
Lobby Atrium (V)
7:30 p.m.

PLUTO

Mt. Rustmore, Disney's Castaway Cay
9:45 a.m.
Scuttle's Cove, Disney's Castaway Cay
10:45 a.m.
Lobby Atrium (V)
7:00 p.m.

CAPTAIN JACK SPARROW

Marge's Barges, Disney's
Castaway Cay - 9:45 a.m.
Pelican Point Tram Stop -
11:00 a.m.

MICKEY MOUSE

Scuttle's Cove, Disney's Castaway Cay
9:45 a.m.
Mt. Rustmore, Disney's Castaway Cay
10:45 a.m.
Deck 4 Balcony, Midship
8:00 p.m.
Lobby Atrium (V)
9:45 p.m.

CHIP & DALE

Post Office, Disney's Castaway Cay
10:00 a.m. & 11:00 a.m.
Gangway - 2:30 p.m.
Deck 4 Balcony, Midship
5:30 p.m.

GOOFOY

Mt. Rustmore, Disney's Castaway Cay
10:15 a.m.
Scuttle's Cove, Disney's Castaway Cay
11:15 a.m.

MINNIE MOUSE

Precludes - 7:15 p.m.
Lobby Atrium (V)
9:15 p.m.

CAPTAIN HOOK & MR SMEE

Scuttle's Cove, Disney's Castaway Cay
10:15 a.m.
Mt. Rustmore, Disney's Castaway Cay
11:15 a.m.
Deck 4 Balcony, Midship
7:30 p.m.

CHARACTER DANCE PARTY

Island Gazebo 1, Disney's
Castaway Cay - 12:15 p.m.
Deck 4 Balcony, Midship
5:00 p.m.

PRINCESS TIANA

Precludes - 7:45 p.m.

SNOW WHITE

Deck 4 Balcony, Midship
9:30 p.m.

Don't forget your Camera to capture those magical moments!
For details of daily Disney character appearances, refer to the
character line in your Navigator Grid.

YOUTH ACTIVITIES THEMED EXPERIENCES

CLUBHOUSE SERIES
focuses on movement and
features content which appeals
to younger children.

JUMP UP! SERIES
includes large group games &
movement-oriented activities.

IN THE SPOTLIGHT SERIES
focuses on children's stage
presence with lots of activities
and enthusiasm.

STORYBOOK SERIES
is designed with a strong
connection to the Disney
classic stories.

CREATE & INVENT SERIES
will have a tactile focus allowing
children to create and admire
their work.

SOLVE IT! SERIES
are less active, but will challenge
children with problem/solutions-
based activities.

YOUTH ACTIVITIES OPEN HOUSE

A non-secured program with activities for families, adults and children of all ages to enjoy together.

SHIP DIRECTORY

YOUTH ACTIVITIES

| | | |
|----------------------------|--------------|---------------------|
| DISNEY'S OCEANEER CLUB | DECK 5, MID | 4:30 PM - 12:00 MID |
| DISNEY'S OCEANEER LAB | DECK 5, MID | 4:00 PM - 12:00 MID |
| EDGE | DECK 13, MID | 4:30 PM - 12:00 MID |
| VIBE | DECK 4, FWD | 4:30 PM - 1:00 AM |
| IT'S A SMALL WORLD NURSERY | DECK 5, MID | 9:00 AM - 11:00 PM |
| SCUTTLE'S COVE | CASTAWAY CAY | 9:00 AM - 4:00 PM |

RECREATION

| | | |
|--------------------------|-----------------|---------------------|
| AQUADUCK | DECK 12, MID | 1:00 PM - 11:00 PM |
| AQUALAB | DECK 12, AFT | 1:00 PM - 7:00 PM |
| DONALD'S POOL | DECK 11, MID | 9:00 AM - 12:00 MID |
| GOLF/SPORTS SIMULATORS | DECK 13, AFT | 1:00 PM - 5:00 PM |
| GOOFOY GOLF | DECK 13, AFT | 8:00 AM - 10:00 PM |
| GOOFOY'S SPORTS DECK | DECK 13, AFT | 8:00 AM - 6:00 PM |
| MARGE'S BARGES | CASTAWAY CAY | 8:30 AM - 3:30 PM |
| MICKEY'S POOL | DECK 11, MID | 9:00 AM - 12:00 MID |
| MICKEY'S SLIDE | DECK 11, MID | 10:00 AM - 6:00 PM |
| MIDSHIP DETECTIVE AGENCY | DECK 2 & 5, MID | 9:00 AM - 10:00 PM |
| NEMO'S REEF | DECK 11, MID | 10:00 AM - 6:00 PM |
| PORT ADVENTURES DESK | DECK 5, MID | 2:00 PM - 10:00 PM |
| QUIET COVE POOL | DECK 11, FWD | 6:00 AM - 12:00 MID |
| SATELLITE FALLS | DECK 13, FWD | 6:00 AM - 6:00 PM |
| SENSES FITNESS CENTER | DECK 11, FWD | 6:30 AM - 10:00 PM |

GENERAL INFORMATION

| | | |
|--------------------------|--------------|--|
| ARR-CADE | DECK 11, AFT | 24 HOURS |
| ADVENTURES BY DISNEY | DECK 4, MID | 9:00 AM - 10:00 AM 3:00 PM - 6:00 PM |
| DISNEY VACATION CLUB | DECK 4, MID | 6:00 PM - 10:00 PM |
| FUTURE CRUISE SALES DESK | DECK 4, MID | 8:30 AM - 10:00 AM 4:00 PM - 6:00 PM 7:30 PM - 8:30 PM |
| GUEST SERVICES | DECK 3, MID | 24 HOURS |
| MEDICAL HEALTH CENTER | DECK 1, FWD | 9:30 AM - 11:00 AM 4:30 PM - 7:00 PM |
| PORT & SHOPPING DESK | DECK 4, MID | |
| PRELUDES | DECK 3, FWD | 5:45 PM - 6:30 PM 8:00 PM - 8:45 PM |
| SENSES SPA AND SALON | DECK 11, FWD | |
| SHUTTERS PHOTO GALLERY | DECK 4, MID | 3:30 PM - 11:30 PM |
| SHUTTERS DIGITAL | DECK 4, MID | 12:00 MID - 11:30 PM |

SHOPPING

| | | |
|--------------------------|--------------|---|
| BIBBIDI BOBBIDI BOUTIQUE | DECK 5, MID | 9:00 AM - 11:00 AM 3:30 PM - 9:00 PM |
| MICKEY'S MAINSAIL | DECK 3, FWD | 5:30 PM - 11:00 PM |
| QUACKS | DECK 11, MID | |
| SEA TREASURES | DECK 3, FWD | 5:30 PM - 11:00 PM |
| VISTA GALLERY | DECK 4, MID | 5:30 PM - 10:00 PM |
| WHITECAPS | DECK 3, FWD | 5:30 PM - 11:00 PM |
| WHOOZITS & WHATZITS | DECK 11, MID | |

DINNER MENU

Animator's Palate: Pacific Rim Cuisine
Enchanted Garden: Continental Market Cuisine
Royal Court: French Cuisine
Dining Times: 5:45 p.m. & 8:15 p.m.

DRINK OF THE DAY

Sringray (Alcoholic)
Parrot Song (Non Alcoholic)

WEATHER FORECAST

Sunday: Overcast
High: 79°F/26°C
Monday: Overcast
High: 79°F/26°C

Evening Attire: Cruise Casual

DINING & LOUNGES

BREAKFAST

| | | |
|---------------------|--------------|--------------------|
| CABANAS CONTINENTAL | DECK 11, AFT | 6:30 AM - 7:00 AM |
| CABANAS | DECK 11, AFT | 7:00 AM - 10:45 AM |
| ENCHANTED GARDEN | DECK 2, MID | 7:15 AM - 10:00 AM |
| ROYAL COURT | DECK 3, MID | 8:00 AM - 9:30 AM |

LUNCH

| | | |
|----------------------|--------------|---------------------|
| CABANAS | DECK 11, AFT | 12:00 PM - 1:30 PM |
| COOKIES | CASTAWAY CAY | 11:30 AM - 2:00 PM |
| COOKIES TOO | CASTAWAY CAY | 11:30 AM - 2:00 PM |
| FILLMORE'S FAVORITES | DECK 11, MID | 11:00 AM - 6:00 PM |
| LUIGI'S PIZZA | DECK 11, MID | 11:00 AM - 6:00 PM |
| TOW MATER'S GRILL | DECK 11, MID | 11:00 AM - 10:00 PM |

DINNER

| | | |
|---|--------------|-------------------|
| ANIMATOR'S PALATE | DECK 3, AFT | 5:45 PM & 8:15 PM |
| ENCHANTED GARDEN | DECK 2, MID | 5:45 PM & 8:15 PM |
| ROYAL COURT | DECK 3, MID | 5:45 PM & 8:15 PM |
| PALO (18+) (RESERVATIONS REQ. & NOM. FEE APPLIES) | DECK 12, AFT | 6:00 PM - 8:30 PM |
| REMY (18+) (RESERVATIONS REQ. & NOM. FEE APPLIES) | DECK 12, AFT | 6:00 PM - 8:30 PM |

LATE NIGHT SNACKS

| | | |
|-----------------|--------------|---------------------|
| LA PIAZZA (18+) | DECK 4, AFT | 10:45 PM - 11:45 PM |
| LUIGI'S PIZZA | DECK 11, MID | 9:30 PM - 12:00 MID |

ADDED FEATURES

| | | |
|------------------|--------------|---------------------|
| BEVERAGE STATION | DECK 11, MID | 24 HOURS |
| EYE SCREAM | DECK 11, MID | 11:00 AM - 11:00 PM |
| ROOM SERVICE | DIAL 0 | 24 HOURS |

ENTERTAINMENT - LOUNGES - BARS

Adults must be 21 and older to consume alcoholic beverages.

| | | |
|---------------------------------|--------------|---------------------|
| BON VOYAGE | DECK 3, MID | 3:30 PM - 10:00 PM |
| COVE BAR (18+) | DECK 11, FWD | 11:30 AM - 10:30 PM |
| COVE CAFE (18+) | DECK 11, FWD | 7:00 AM - 12:00 MID |
| CURRENTS (18+) | DECK 13, FWD | 12:00 PM - 11:00 PM |
| D LOUNGE | DECK 4, MID | SHOWTIMES |
| FROZONE TREATS | DECK 11, MID | 11:00 AM - 10:00 PM |
| LA PIAZZA | DECK 4, AFT | 4:00 PM - 12:00 MID |
| MERIDIAN (18+) | DECK 12, AFT | 5:00 PM - 12:00 MID |
| O'GILLS PUB (18+ AFTER 9:00 PM) | DECK 4, AFT | 4:00 PM - 12:00 MID |
| OOH LA LA (18+) | DECK 4, AFT | 5:00 PM - 12:00 MID |
| OUTLOOK | DECK 14, MID | SUNSET TIMES |
| SKYLINE (18+) | DECK 4, AFT | 5:00 PM - 12:00 MID |
| THE TUBE (18+) | DECK 4, AFT | 10:00 PM - 2:00 AM |
| VISTA CAFE | DECK 4, MID | 7:30 AM - 11:00 PM |
| WAVES | DECK 12, AFT | |

CASTAWAY CAY BARS

| | | |
|------------------|--------------|-------------------|
| CONCHED OUT BAR | CASTAWAY CAY | 8:30 AM - 4:00 PM |
| CASTAWAY AIR BAR | CASTAWAY CAY | 8:30 AM - 3:30 PM |
| HEADS UP BAR | CASTAWAY CAY | 8:30 AM - 3:30 PM |
| SAND BAR | CASTAWAY CAY | 8:30 AM - 4:00 PM |

Consumers who order raw or partially cooked, ready-to-eat food of animal origin, are hereby informed that the food is not sufficiently cooked to ensure its safety.

IMPORTANT NUMBERS

| | |
|--------------------|--------|
| Fire/Security: | 7-3001 |
| Medical EMERGENCY: | 7-3000 |
| Health Center: | 7-1923 |

All Ashore:
Approx. 8:30 a.m.

All Aboard:
5:00 p.m.