

# PERSONAL NAVIGATOR



SATURDAY, JULY 27, 2013

Sunrise: 6:41 a.m. Sunset: 8:15 p.m.  
Evening Attire: Cruise Casual  
All Aboard: 3:45 p.m.

Saturday: Sunny High: 81°F/27°C  
Sunday: Overcast High: 81°F/27°C

PORT CANAVERAL, FLORIDA



Join us tonight in the beautiful Walt Disney Theatre for a magical, musical journey through the wonderland of the Disney Fantasy featuring the Walt Disney Theatre Cast; World Famous Disney Characters and the Comedy and Juggling of Mike Price.

**WALT DISNEY THEATRE  
DECK 3 & 4, FORWARD  
6:15 p.m. & 8:30 p.m.**



Assistance available at the entrance to the Walt Disney Theatre 30 minutes prior to show time.

## Welcome Aboard!

### Your Stateroom & Luggage

Staterooms will be ready at 1:30 p.m. Stateroom hosts will deliver luggage throughout the day until 5:30 p.m.

### Staterooms with Bunk Beds

Bunk beds are recessed into the ceiling and will be prepared during evening turndown service by your Stateroom Host/ess.

### To Change Dining Assignment

Requests for different seating times will be taken today:

- 1:00 - 3:15 p.m. - Royal Court
- 3:15 - 5:00 p.m. - Please dial 7-1831/ 7-1832/ 7-1833

### Palo & Remy Dining Reservations

Reservations are required and will be taken on a first come basis today at:

- 1:00 p.m. - 3:15 p.m. Palo & Remy
- 3:15 - 5:00 p.m. Please leave a voice mail at 7-9735 for Palo or 7-9734 for Remy.

### Dinner.

Please check your dining tickets for details of your dining rotation, and bring them to your specific dining location. There is no need to wait in line prior to dinner. Dining Rooms open at designated seating times and your table is reserved each night of your cruise.

- 5:45 p.m. - First seating
- 8:15 p.m. - Second seating

## SAILING AWAY

It's time to go Sailing Away! Join Mickey and Minnie, along with Tinker Bell and the rest of the gang, as they welcome you aboard the Disney Fantasy.

**Deck Stage,  
Deck 11, Midship,  
4:30 p.m.**

## Don't Miss:

### Disney Fantasy - Talent Show Sign Ups

*Guest Services, Deck 3, Midship*

Does your family have what it takes to make their performing dreams come true? Find out at the Disney Fantasy Family Talent Show - dare to show your family's flair! Pre-register at the Guest Services Desk, Deck 3, Midship. Your last chance to sign up is at 4:00 p.m. on Thursday.

### Walking Ship Tour

*Meet at Preludes, Deck 3, Forward - 1:00 p.m. & 2:00 p.m.*

Enjoy the beauty of the Disney Fantasy with your Cruise Staff in this guided tour.

### Mirror, Mirror

*D Lounge, Deck 4, Midship - 10:15 p.m.*

Head to D Lounge for the fairest game show of them all, Mirror, Mirror featuring the Magic Mirror and everyone's favorite dwarf, Dopey.

### Match Your Mate (18+)

*The Tube, Deck 4, Aft - 10:30 p.m.*

It's time to play everyone's favorite couples game show - Match Your Mate!



Visit Shutters for all your photographic needs, from Digital cameras, batteries and accessories. All photos taken during this cruise will be available for viewing on our photo kiosks at Shutters Digital, as well as in your photo folder at Shutters, Deck 4, Midship.

## DINNER MENU

Animator's Palate: Pacific Rim Cuisine  
Enchanted Garden: Continental Market  
Royal Court: French Dinner

## DRINK OF THE DAY

Ooh La La (Alcoholic)  
Purple Basil Lemonade  
(Non Alcoholic)

## IMPORTANT NUMBERS

Fire/Security: 7-3001  
Medical Emergency: 7-3000  
Health Center: 7-1923



# FUN FOR ALL AGES HIGHLIGHTS

## WALKING SHIP TOUR

Meet at Preludes, Deck 3, Forward - 1:00 p.m. & 2:00 p.m.

Enjoy the beauty of the Disney Fantasy with your Cruise Staff in this guided tour.

## POOL SIDE JAMS WITH CRUISE STAFF DJ MARCUS

Deck Stage, Deck 11, Midship, - 1:45 p.m.

Join DJ Marcus as he spins the tunes to get your cruise started.

## DISNEY VACATION CLUB® MEMBERS CELEBRATION

The Tube, Deck 4, Aft - 2:30 p.m.

Members! Mix and mingle with other Members and learn how you can enhance your Membership! Please see a Disney Vacation Club representative on Deck 4, Midship, or call 7-2805 from your stateroom phone for more information.

## FAMILY DANCE PARTY

D Lounge, Deck 4, Midship - 9:30 p.m.

Bring the whole family and dance your cares away to some of your favorite hits!



## MIRROR, MIRROR

D Lounge, Deck 4, Midship - 10:15 p.m.

Head to D Lounge for the fairest game show of them all, Mirror, Mirror featuring the Magic Mirror and everyone's favorite dwarf, Dopey.

## FAMILY SUPERSTAR KARAOKE

D Lounge, Deck 4, Midship - 10:45 p.m.

Join your Cruise Staff in D Lounge tonight and sing along to your favorite song - fun for everyone.

# KICK OFF SENSES SPA BINGO

## D Lounge, Deck 4, Midship

Card Sales - 7:15 p.m.

Game Starts - 7:30 p.m.

Join us for our first session of Jackpot Bingo, with four CASH prizes to be won! Everyone in attendance will receive a FREE bingo card for one of the four cash prize games. Plus great spa prizes that will pamper you, including a mini facial and massages. All courtesy of the Senses Spa and Salon.



# ADULT ACTIVITY HIGHLIGHTS



## FITNESS CLASSES

Senses Spa and Salon has a variety of seminars and fitness classes available throughout the cruise.

## BEVERAGE SEMINARS

Your Beverage team has a host of tastings and seminars to entertain and educate you. Stop by La Piazza, Deck 4, Aft to pre-book these experiences (nominal fee applies).

Mixology - Wine Tasting - Martini Tasting - Champagne Tasting - Beer Tasting - Cognac Tasting - Whisky Tasting - Italian Cocktail Tasting - Tequila & Margarita Tasting - Wine and Chocolate Tasting - Rum Tasting

## ART OF THE THEME SHOW TOUR

18+ Meet at Meridian, Deck 12, Aft - Pre-Book at Guest Services

Sunday, Monday, Wednesday and Thursday

Join us on a guided ship tour and discover the key ingredients that make the Disney Fantasy one-of-a-kind. Pre-book at Guest Services, Deck 3, Midship.

## CLUB 18\*21 - ICE BREAKER

O'Gills Pub, Deck 4, Aft - 10:00 p.m.

Club 18\*21 is an exclusive gathering for young adult Guests. Come meet fellow cruisers and learn about the great activities Disney has to offer to help create the perfect cruise experience.

CLUB  
18\*21

# FEATURED VARIETY ACTS THIS VOYAGE



## THE COMEDY & VENTRILOQUISM OF LYNN TREFZGER

Lynn is a ventriloquist/comedienne with a trunk full of zany characters. Audiences are treated to Lynn's vocal illusion talents, when they may meet a drunken and lovable camel, a grumpy old man, a feisty little girl, and may even see some other audience members who are brought up for the action! Her off-the-wall audience interplay is tailored for both family and adult audiences.



## THE COMEDY & JUGGLING OF MIKE PRICE

Mike Price's ability to invent and perform the most technically difficult tricks in the world allowed him to capture the gold medal at the International Juggling Championships in Montreal, Canada. Mike has performed his show at some of the hottest and most famous nightclubs throughout the United States and Europe, including the Club Island Paradise Ibiza. He has traveled and performed at more shows than most jugglers do in a lifetime and he has made people from all over the world and from all age groups become fans of juggling.



## THE MAGIC & ILLUSION OF KNIGHT MAGIC

Las Vegas based illusionists, Kyle Knight and Mistie, have traveled the world sharing their own unique style of illusions, and giving their audiences a completely different perspective of the art of magic. Together Kyle and Mistie utilize video screens for a close up view of sleight of hand, demonstrate amazing mental miracles, and perform their illusions with a bold and modern style. They surprise their audience with a different approach to magic as they reveal guarded secrets, perform impossible feats while being totally surrounded, and allow their audience to get up close and involved in ways they've never seen before.



## GUEST DJ IMMORTAL

With over 15 years of experience, Immortal is one of the world's top performance DJs and the Director of Scratch Academy Miami. DJ Immortal is most known for winning countless DJ competitions. From clubs in Miami, festivals in Brazil & beach parties in the Caribbean, Immortal is sure to rock any crowd! When it comes to Disney, Peter Pan is Immortal's favorite character.



# YOUTH ACTIVITIES HIGHLIGHTS



12:00 p.m. - 3:00 p.m.  
4:30 p.m. - 11:00 p.m.

Deck 5, Midship (7-5864)

Infants and Toddlers can enjoy toys and activities at It's A Small World Nursery. Reservations are first come, first served so please stop by!



Deck 5, Midship (7-1440)  
(3-12 years old)  
12:00 p.m. - 3:00 p.m.  
4:30 p.m. - 12:00 mid



Deck 5, Midship (7-1445)  
(3-12 years old)  
12:00 p.m. - 3:00 p.m.  
4:30 p.m. - 12:00 mid

## REGISTRATION FOR 3-12 YEAR OLDS

Meet the Youth Activities Team in the Oceaneer Lab and Oceaneer Club, complete your registration & learn all the Themed Experiences this cruise!

- CLUBHOUSE SERIES** - The Clubhouse Themed Experiences focus on movement and feature content which appeals to younger children. *Recommended for children seven years and younger.*
- STORYBOOK SERIES** - The Storybook Series Themed Experiences are designed with a strong connection to the Disney classic stories. *Recommended for children seven years and younger.*
- JUMP UP! SERIES** - The Jump Up! Themed Experiences will include large group games & movement-oriented activities.
- CREATE & INVENT SERIES** - The Create & Invent Themed Experiences will have a tactile focus allowing children to create and admire their work.
- IN THE SPOTLIGHT SERIES** - The In The Spotlight Themed Experiences focus on children's stage presence with lots of activities and enthusiasm. *Recommended for children seven years and older.*
- SOLVE IT! SERIES** - The Solve It! Themed Experiences are less active, but will challenge children with problem/solutions-based activities. *Recommended for children seven years and older.*
- YOUTH ACTIVITIES OPEN HOUSE** - Activities for families, adults and children of all ages to enjoy together.

### DINE & PLAY

A convenience for families dining at 8:15 p.m., our Youth Activities Counselors will be available at 9:15 p.m. at the entrance of Royal Court, Enchanted Garden and Animator's Palate dining rooms to bring registered children to join the fun in the Youth Activity areas.

### YOUTH ACTIVITIES OPEN HOUSE

Open House is an opportunity for all to come and participate in a variety of exciting activities and free time in It's A Small World Nursery, Oceaneer Club, Lab, Edge and Vibe throughout the cruise. During these times secured programming will still be offered in the other venue for those looking to check their children into care.



Deck 13, Midship (7-9743)  
(11-14 years old)

12:00 p.m. - 3:00 p.m.  
4:30 p.m. - 12:00 mid

### TAKING IT TO THE EDGE

10:15 p.m.  
Come to Edge and get all the info you need to squeeze every bit of fun out of your stay onboard.



Entrance Deck 4, Forward (7-9418)  
(14-17 years old) 12:00 p.m. - 3:00 p.m.  
4:30 p.m. - 1:00 a.m.

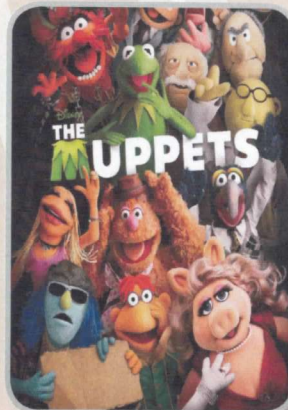
### THE DOWNLOAD

10:30 p.m.  
Come up to Vibe and help plan all the fun activities you will be doing this cruise with your new friends!

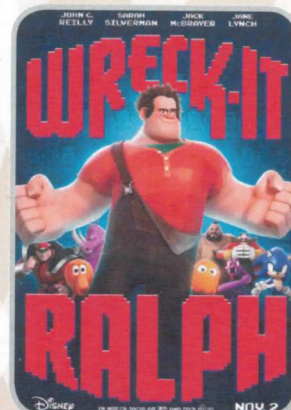
# BUENA VISTA THEATRE

## Today's Movies

DOLBY 3D



5:30 p.m. & 8:00 p.m.  
Duration: 1 hr 43 mins  
Rating: PG



10:15 p.m.  
Duration: 1 hr 53 mins  
Rating: PG



### FAMILY GAME SHOW

Head to D Lounge for the fairest game show of them all, Mirror, Mirror featuring the Magic Mirror and everyone's favorite dwarf, Dopey.

D Lounge,  
Deck 4, Midship,  
10:15 p.m.



It's time to play everyone's favorite couple's game show, Match your Mate!

The Tube (18+),  
Deck 4, Aft,  
10:30 p.m.

### YOUTH ACTIVITIES OPEN HOUSE

Open House is an opportunity for all to come and participate in a variety of exciting activities and free time in the Oceaneer Club, Oceaneer Lab, It's A Small World Nursery, Vibe and Edge throughout the cruise. During these times secured programming will still be offered in the other venue for those looking to check their children into care.

Vibe: 12:00 p.m. - 3:00 p.m.  
Edge: 12:00 p.m. - 3:00 p.m.

Disney's Oceaneer Lab: 12:00 p.m. - 2:15 p.m.  
Disney's Oceaneer Club: 12:00 p.m. - 2:15 p.m.



# MORE TO ENJOY WHILE ONBOARD



## ADVENTURES BY DISNEY

Join us for a special presentation on Thursday to learn what traveling with Adventures by Disney is all about. See our Adventure Guide on Deck 4, Midship.

## PLAN YOUR NEXT CRUISE

Another Disney Cruise Line vacation is in your future! Book a future cruise today and you'll save 10%, receive up to a \$200 onboard credit, and pay a reduced deposit! Visit the Future Cruise Sales Desk, Deck 4, Midship. Book by 8:30 p.m. Monday for a chance to win \$100 Onboard Credit for this cruise!

## PORT & SHOPPING INFORMATION

St. Maarten & St. Thomas are the most famous tax & duty free shopping ports in the world! Don't miss tomorrow's Port & Shopping Show in the Buena Vista Theatre at 1:30 p.m. Over \$1000 in Give-A-Ways! Meet your Shopping Guides, Candice & Mark at their Desk, Deck 4, Midship 7:30 p.m. - 8:30 p.m. tonight, and get your extra raffle tickets for the Shopping Show.

## ONBOARD AIRLINE CHECK IN

If you would like to have your boarding passes printed for you onboard and have your luggage taken to the airport for you, register before midnight on Wednesday. If you have Disney Cruise Line airport transfer to Orlando International Airport and fly with one of the participating airlines, stop at Guest Services, Deck 3, Midship to register.

## SURF @ SEA

\$0.75 per minute, or save money by buying blocks of time. \$55.00 for 100 minutes, \$100.00 for 250 minutes and \$150.00 for 500 minutes. Wireless information sheets are available at Guest Services, Deck 3, Midship.

*Please note: Due to satellite connectivity, onboard internet service will be noticeably slower than you may be accustomed to and may at times be interrupted or unavailable.*

## ON DEMAND TV

Watch Disney movies, Hollywood features, ABC Shows, and even captioned content, plus much more "On Demand" for FREE in the comfort of your stateroom! Bookmark your movie and come back to watch it later. Press MENU on your stateroom television remote control, and follow the prompts.



## SPA SPECIAL



Book and receive your treatment today and you will receive a complimentary extra 15 minute treatment of your choice.

Call Senses Spa & Salon  
7-1465



Port Adventures are designed to ensure that you see the best that our ports have to offer. Explore the two nations of St. Maarten on a land tour or take an exhilarating RIB boat ride from the Dutch to the French side. From St. Thomas you can enjoy the scenic splendor of St. John or snorkel in the beautiful waters of the U.S.V.I. Our friendly Port Adventures team will help you find the best choices for your family at the Port Adventures Desk, Deck 5, Midship.

## SHOPPING

### FRAGRANCE OF THE DAY

Stop by Whitecaps to test our selected fragrance today! Deck 3, Forward.

### DISNEY STORYTELLERS SERIES AT THE VISTA GALLERY

With artists who have been instrumental in creating the worlds of popular Disney films, stop by the Vista Gallery today for the Disney Storytellers Series and admire the unique interpretations of your favorite Disney characters by these talented artists. Deck 4, Midship.

### MAUI DIVERS FINE ISLAND JEWELRY TRUNK SHOW

Established in 1959, Maui Divers is Hawaii's largest designer and retailer of fine island jewelry. Choose from the Pacific's largest selection of exclusive 14 karat gold designs, exotic pearls, and much more. Come see for yourself at Whitecaps, Deck 3, Midship.

### BLUE GALLERY COLLECTIONS AT THE VISTA GALLERY

Blue Gallery's beautiful contemporary art collection features some of the most recognizable artists of today. Stop by Vista Gallery to view these great works at great prices with up to 50% off of US Retail Prices on Blue Gallery Artwork! Vista Gallery, Deck 4, Midship.

### GREAT OFFERS WHEN YOU SHOP ONBOARD

Here's another great reason to shop onboard! With any merchandise purchase of \$25 or more, receive a Disney Cruise Line Towel for \$14.95 and/or, with a purchase of \$30 or more, receive a Disney Cruise Line Duffel for \$17.95. Take advantage of this great offer and visit Mickey's Mainsail, Sea Treasures, and Whitecaps today! Deck 3, Midship.

Due to port regulations, when the ship is docked, the stores will remain closed.

## BIBBIDI BOBBIDI BOUTIQUE

Becoming the princess of your dreams creates memories for a lifetime. Where Fairy Godmothers in training are ready with Pixie Dust and Magic! Make your reservations for princess makeovers and the Pirate League today. Limited space available. Bibbidi Bobbidi Boutique is located on Deck 5, Midship, or call ext. 9438 to make a reservation.



## WELCOME ABOARD RAFFLE

Your Embarkation photos will be available for viewing at 7:00 p.m. Visit Shutters and fill in a raffle to enter for a chance to win two 8x10 photos!

*\*Please note that photos are available for viewing on our interactive photo kiosks approximately five hours after being taken and are only available for purchase during this cruise.*

## IMPORTANT INFORMATION

### Security Notice

All Guests (including children) who wish to disembark the ship are required to present their Key to the World card at the gangway. A photo ID is also required for those Guests who are 18 years of age or older. Guests under the age of 18 are required to have a Parent, Guardian or other responsible adult sign an authorization form at the time it is given out if they wish to go ashore unaccompanied. Authorization forms are available at the gangways and Guest Services.

### Please Note:

Please remember to use plenty of sunscreen and mosquito repellent when venturing ashore.

### Cold and Flu Reminder

Please wash hands frequently and thoroughly, particularly before meals. Contact the Health Center by dialing 7-1923, should anyone in your party become ill.

### Corridor Quiet Hours

As a courtesy to all our Guests, please recognize quiet hallway hours from 10:00 p.m. til 8:00 a.m.

### Inclement Weather

For the safety of all Guests, outdoor events may be changed due to unforeseen weather conditions.

### Environmental Message

With Disney's commitment to the Environment, please refrain from throwing anything over the Ship's side. Thank you!

### No Reserved Seats Policy

As a courtesy to all our Guests, we kindly advise that the saving of seats is not permitted in the Walt Disney Theatre, and the saving of the sun loungers is not permitted on Deck 11, 12, and 13. Items left unattended will be returned to lost and found at Guest Services, Deck 3 Midship.

### Smoking

For the comfort of our guests the following areas are designated as Smoking areas: - Promenade Deck (Deck 4), smoking is permitted Port Side, Aft only from 6:00 p.m. to 6:00 a.m.  
- Currents - Deck 13, Forward, Port Side.  
- Meridian Bar - Deck 12, Aft, Port Side, outside.  
- Smoking is permitted on stateroom verandahs. Smoking is prohibited inside all guest staterooms. Guests found smoking in their staterooms will be charged a \$250 stateroom recovery fee. Electronic cigarettes may only be used in designated smoking areas.

### Walt Disney Theatre

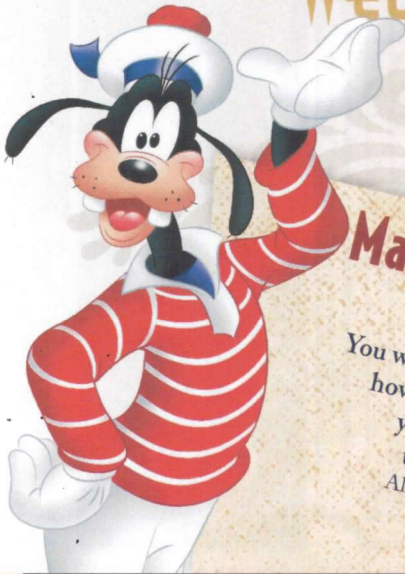
Theatrical performances may use artificial fog, strobe lights, pyrotechnics and other special effects. For the safety of our performers and the comfort of those around you, the use of any photography, video recording device or any electronic equipment is prohibited.

### Verandah Safety

Please do not leave any combustible materials on your balcony when not present in your stateroom for safety reasons.



# WELCOME ABOARD!



## Mandatory Life Boat Drill

**4:00 PM**  
 (All Guests must attend)  
 You will not need to wear your life jacket,  
 however it is critical that you bring  
 your Key To The World card  
 to your Assembly Station.  
 All ship services will be suspended  
 between 3:45 and 4:30 p.m.

Your Assembly Station is indicated on your Key To The World card.



It's time to go Sailing Away!  
 Join Mickey and Minnie along  
 with Tinker Bell and the rest of  
 the gang as they welcome you  
 aboard the Disney Fantasy.

**Deck Stage,  
 Deck 11, Midship,  
 4:30 p.m.**

Afternoon	1:45	2:00	2:15	2:30	2:45	3:00	3:15	3:30	3:45	4:00	4:15	4:30	4:45	5:00	5:15	5:30	5:45	6:00	6:15	6:30	6:45			
FUNNEL VISION																						Tarzan (PG) Funnel Vision		
BUENA VISTA THEATRE																						The Muppets (PG) Duration: 1 Hour 43 Minutes > 7:13 p.m.		
CHARACTER																						Mickey Lobby Atrium (V)	Snow White Dk 4, Balcony	Donald Lobby Atrium (V)
FUN FOR ALL AGES																								
ADULTS																								
VIBE 14-17 YEARS OLD																								
EDGE 11-14 YEARS OLD																								
OCEANEER LAB 3-12 YEARS OLD																								
OCEANEER CLUB 3-12 YEARS OLD																								



Evening	7:00	7:15	7:30	7:45	8:00	8:15	8:30	8:45	9:00	9:15	9:30	9:45	10:00	10:15	10:30	10:45	11:00	11:15	11:30	11:45	12:00		
FUNNEL VISION																							
BUENA VISTA THEATRE																							
CHARACTER																							
FUN FOR ALL AGES																							
ADULTS																							
VIBE 14-17 YEARS OLD																							
EDGE 11-14 YEARS OLD																							
OCEANEER LAB 3-12 YEARS OLD																							
OCEANEER CLUB 3-12 YEARS OLD																							

Symbol for activities that will be repeated during the cruise

Youth Activities Open House



FOLD

Fold along the dotted lines and take me with you so you don't miss any of the fun!

FOLD

IN THE SPOTLIGHT SERIES  
 SOLVE IT! SERIES

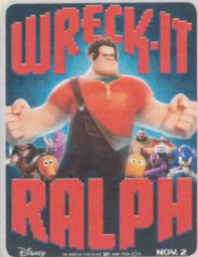
JUMP UP! SERIES  
 CREATE & INVENT SERIES

CLUBHOUSE SERIES  
 STORYBOOK SERIES



# BUENA VISTA THEATRE

DOLBY 3D



5:30 p.m. & 8:00 p.m.  
Duration: 1 hr 43 mins  
Rating: PG

10:15 p.m.  
Duration: 1 hr 53 mins  
Rating: PG

## Character Appearances

### MICKEY MOUSE

Lobby Atrium (V)  
5:15 p.m. & 10:00 p.m.  
Preludes - 7:15 p.m.

### PRINCESS TIANA

Lobby Atrium (P) - 9:30 p.m.

### PETER PAN

Deck 4 Balcony, Midship  
10:00 p.m.

### SNOW WHITE

Deck 4 Balcony, Midship  
5:30 p.m.  
Preludes - 7:45 p.m.

### DONALD DUCK

Lobby Atrium (V) - 5:45 p.m.

### PLUTO

Lobby Atrium (V) - 7:15 p.m.

### PRINCESS AURORA

Deck 4 Balcony, Midship  
7:15 p.m.

### BELLE

Deck 4 Balcony, Midship  
7:45 p.m. & 9:30 p.m.

### GOOFY

Lobby Atrium (V)  
7:45 p.m. & 9:30 p.m.



(H) Hallway - (S) Starboard Side - (P) Port Side - (V) Vestibule

For details of daily Disney character appearances, refer to the character line on your Navigator Grid, or the digital character board in the Lobby Atrium.

## YOUTH ACTIVITIES THEMED EXPERIENCES

### CLUBHOUSE SERIES

focuses on movement and features content which appeals to younger children.

### JUMP UP! SERIES

includes large group games & movement-oriented activities.

### IN THE SPOTLIGHT SERIES

focuses on children's stage presence with lots of activities and enthusiasm!

### STORYBOOK SERIES

is designed with a strong connection to the Disney classic stories.

### CREATE & INVENT SERIES

will have a tactile focus allowing children to create and admire their work.

### SOLVE IT! SERIES

are less active, but will challenge children with problem/solutions-based activities.

### YOUTH ACTIVITIES OPEN HOUSE

A non-secured program with activities for families, adults and children of all ages to enjoy together.

## SHIP DIRECTORY

### YOUTH ACTIVITIES

DISNEY'S OCEANEER CLUB	DECK 5, MID	12:00 PM - 3:00 PM 4:30 PM - 12:00 MID
DISNEY'S OCEANEER LAB	DECK 5, MID	12:00 PM - 3:00 PM 4:30 PM - 12:00 MID
EDGE	DECK 13, MID	12:00 PM - 3:00 PM 4:30 PM - 12:00 MID
VIBE	DECK 4, FWD	12:00 PM - 3:00 PM 4:30 PM - 1:00 AM
IT'S A SMALL WORLD NURSERY	DECK 5, MID	12:00 PM - 3:00 PM 4:30 PM - 11:00 PM

### RECREATION

AQUADUCK	DECK 12, MID	12:00 PM - 3:00 PM 4:30 PM - 10:00 PM
AQUALAB	DECK 12, AFT	12:00 PM - 3:45 PM 5:00 PM - 7:00 PM
DONALD'S POOL	DECK 11, MID	12:00 PM - 3:30 PM 5:30 PM - 12:00 MID
GOLF/SPORTS SIMULATORS	DECK 13, AFT	12:00 PM - 3:30 PM 4:30 PM - 6:00 PM
GOOFY GOLF	DECK 13, AFT	5:00 PM - 10:00 PM
GOOFY'S SPORTS DECK	DECK 13, AFT	12:00 PM - 6:00 PM
MICKEY'S POOL	DECK 11, MID	12:00 PM - 11:00 PM
MICKEY'S SLIDE	DECK 11, MID	12:00 PM - 3:30 PM 4:30 PM - 6:00 PM
MIDSHIP DETECTIVE AGENCY	DECK 2 & 5, MID	11:30 AM - 10:00 PM
NEMO'S REEF	DECK 11, MID	12:00 PM - 3:30 PM 4:30 PM - 6:00 PM
PORT ADVENTURES DESK	DECK 5, MID	12:00 PM - 3:30 PM 4:30 PM - 8:30 PM
QUIET COVE POOL	DECK 11, FWD	12:00 PM - 12:00 MID
SATELLITE FALLS	DECK 13, FWD	12:00 PM - 6:00 PM
SENSES FITNESS CENTER	DECK 11, FWD	11:30 AM - 10:00 PM

### GENERAL INFORMATION

ARR-CADE	DECK 11, AFT	24 HOURS
ADVENTURES BY DISNEY	DECK 4, MID	
DISNEY VACATION CLUB	DECK 4, MID	5:00 PM - 8:00 PM
FUTURE CRUISE SALES DESK	DECK 4, MID	7:30 PM - 8:30 PM
GUEST SERVICES	DECK 3, MID	24 HOURS
MEDICAL HEALTH CENTER	DECK 1, FWD	4:30 PM - 7:00 PM
PORT & SHOPPING DESK	DECK 4, MID	7:30 PM - 8:30 PM
PRELUDES	DECK 3, FWD	5:45 PM - 6:30 PM 8:00 PM - 8:45 PM
SENSES SPA AND SALON	DECK 11, FWD	11:30 AM - 10:00 PM
SHUTTERS PHOTO GALLERY	DECK 4, MID	7:00 PM - 11:00 PM
SHUTTERS DIGITAL	DECK 4, MID	OPENS AT 5:00 PM

### SHOPPING

BIBBIDI BOBBIDI BOUTIQUE	DECK 5, MID	12:00 PM - 3:00 PM 5:00 PM - 9:00 PM
MICKEY'S MAINSAIL	DECK 3, FWD	5:45 PM - 11:00 PM
SEA TREASURES	DECK 3, FWD	5:45 PM - 11:00 PM
VISTA GALLERY	DECK 4, MID	6:00 PM - 10:00 PM
WHITECAPS	DECK 3, FWD	5:45 PM - 11:00 PM

### DINNER MENU

Animator's Palate: Pacific Rim Cuisine  
Enchanted Garden: Continental Market  
Royal Court: French Dinner  
Dining Times: 5:45 p.m. & 8:15 p.m.

### DRINK OF THE DAY

Ooh La La (Alcoholic)  
Espresso Chiller (Non Alcoholic)

### WEATHER FORECAST

Saturday: Sunny High: 81°F/27°C  
Sunday: Overcast High: 81°F/27°C

Evening Attire: Cruise Casual

## DINING & LOUNGES

### LUNCH

CABANAS	DECK 11, AFT	12:00 PM - 3:00 PM
ENCHANTED GARDEN	DECK 2, MID	12:00 PM - 2:00 PM
FILLMORE'S FAVORITES	DECK 11, MID	12:00 PM - 3:30 PM 4:15 PM - 7:00 PM
LUIGI'S PIZZA	DECK 11, MID	12:00 PM - 3:30 PM 4:15 PM - 6:00 PM
TOW MATER'S GRILL	DECK 11, MID	12:00 PM - 3:30 PM 4:15 PM - 10:00 PM

### DINNER

ANIMATOR'S PALATE	DECK 3, AFT	5:45 PM & 8:15 PM
ENCHANTED GARDEN	DECK 2, MID	5:45 PM & 8:15 PM
ROYAL COURT	DECK 3, MID	5:45 PM & 8:15 PM
PALO (18+) (RESERVATIONS REQ. & NOM. FEE APPLIES)	DECK 12, AFT	6:00 PM - 8:30 PM
REMY (18+) (RESERVATIONS REQ. & NOM. FEE APPLIES)	DECK 12, AFT	6:00 PM - 8:30 PM

### LATE NIGHT SNACKS

LA PIAZZA (18+)	DECK 4, AFT	10:45 PM - 11:45 PM
LUIGI'S PIZZA	DECK 11, MID	9:30 PM - 12:00 MID

### ADDED FEATURES

BEVERAGE STATION	DECK 11, MID	24 HOURS
EYE SCREAM	DECK 11, MID	12:00 PM - 11:00 PM
ROOM SERVICE	DIAL 0	24 HOURS

### ENTERTAINMENT - LOUNGES - BARS

Adults must be 21 and older to consume alcoholic beverages.

BON VOYAGE	DECK 3, MID	11:30 AM - 10:30 PM
COVE BAR (18+)	DECK 11, FWD	11:30 AM - 11:00 PM
COVE CAFE (18+)	DECK 11, FWD	11:30 AM - 12:00 MID
CURRENTS (18+)	DECK 13, FWD	11:30 AM - 10:30 PM
D LOUNGE	DECK 4, MID	SHOWTIMES
FROZEN TREATS	DECK 11, MID	11:30 AM - 11:00 PM
LA PIAZZA	DECK 4, AFT	11:30 AM - 12:00 MID
MERIDIAN (18+)	DECK 12, AFT	5:00 PM - 12:00 MID
O'GILLS PUB (18+ AFTER 9:00 PM)	DECK 4, AFT	11:30 AM - 11:30 PM
OOH LA LA (18+)	DECK 4, AFT	5:00 PM - 12:00 MID
OUTLOOK	DECK 14, MID	SUNSET TIMES
SKYLINE (18+)	DECK 4, AFT	5:00 PM - 12:00 MID
THE TUBE (18+)	DECK 4, AFT	10:00 PM - 2:00 AM
VISTA CAFE	DECK 4, MID	11:30 AM - 11:00 PM
WAVES	DECK 12, AFT	11:30 AM - 7:00 PM

Consumers who order raw or partially cooked, ready-to-eat food of animal origin, are hereby informed that the food is not sufficiently cooked to ensure its safety.

## GOOFY'S SPORTS

### Digital Simulators

<b>Sports Simulator</b> (Basketball, Baseball, Hockey, Football or Soccer) \$12 / half hr, \$20 / hr	<b>Golf Simulator</b> \$25 / half hr, \$45 / hr
---	--

Reservations can be made at the Port Adventures Desk, Deck 5, Midship or at the Simulators, Deck 13, Aft.



Visit the Port Adventures Desk, Deck 5, Midship, for bookings & questions.

## IMPORTANT NUMBERS

Fire/Security:	7-3001
Medical/Emergency:	7-3000
Health Center:	7-1923