

PERSONAL NAVIGATOR



WEDNESDAY, APRIL 30, 2014

Sunrise 6:19 a.m. Sunset: 7:12 p.m.
Evening Attire: Pirate or Cruise Casual
All Aboard: 5:45 p.m.

Today: Partly Cloudy High: 86°F/30°C
Tomorrow: Showers High: 86°F/30°C

COZUMEL, MEXICO

MARVEL
CAPTAIN AMERICA
THE WINTER SOLDIER

WALT DISNEY THEATRE
Deck 3 & 4, Forward
5:00 p.m. & 8:00 p.m. - **DOLBY 3D**

Duration: 2 hr 16 minutes - Rating (PG-13)

As a courtesy to all Guests, we kindly advise that the saving of seats is **not** permitted in the Walt Disney Theatre.

Assistance available at the entrance to the Walt Disney Theatre 30 minutes prior to show time.

Disney
MUPPETS
MOST WANTED

BUENA VISTA THEATRE
Deck 4 & 5, Midship
5:15 p.m. & 8:15 p.m.
Duration: 1 hr 52 minutes - Rating (PG)

Cozumel Port Information

Cozumel, Mexico is an invigorating port of call on a Caribbean Cruise vacation. An island and a city off the eastern coast of Mexico's Yucatan Peninsula, Cozumel is known for some of the world's healthiest coral reefs and rarest natural recreation. This island in the Caribbean Sea is an extremely popular destination for scuba-diving and snorkeling enthusiasts.

The Mayans considered the site sacred to the Moon Goddess, Ixchel, and women would make regular pilgrimages there to pay tribute and to wish for fertility in return.

The arrival of the Spanish in 1518 brought disease and devastation, nearly wiping out the Mayans and leaving the island all but deserted by 1570. It was an outpost for pirates until 1848, when warfare in the Yucatan drove refugees to settle there. A boom in visitors to the island came after 1959, when the famed Jacques Cousteau publicized Cozumel's coral reefs as among the best in the world for scuba diving.

Today, Guests can let their imaginations take flight in the island the Mayans named Cozumel—the "Island of the Swallows"—so long ago.

DOCKING

The ship will dock at the Punta Langosta pier. The pier is located downtown, with walk off access right into the city of Cozumel.

Disney's
PIRATES
of the
CARIBBEAN

It's a Pirate Celebration, me hearties! Come experience all the pirate fun alongside Captain Mickey Mouse and his famous Pirate Crew.
(Weather Permitting)
7:45 p.m.

Deck 11 & 12 marks the spot

Buccaneer Blast
Fireworks
10:30 p.m.
Deck 11 & 12
marks the spot
(Weather Permitting)

Don't Miss:

Pirate Trivia

D Lounge, Deck 4, Midship - 3:15 p.m.
Test the depths of your pirate knowledge with your Cruise Staff at this swashbuckling trivia event.

Pirate Palooza

D Lounge, Deck 4, Midship - 5:00 p.m.
Yo ho, matey's! Jump aboard, junior pirates, and get ready to set sail for fun and games at our Pirate Palooza!

A Pirate's Life For Me

D Lounge, Deck 4, Midship - 6:30 p.m. & 9:30 p.m.
Calling all Pirates, we be! If ye have an adventurous spirit or pirate savvy, come spin the "Wheel of Destiny" for a treasure trove of fun be ripe for the takin' in this action packed pirate game show.



TIME ZONE CHANGE

Remember to turn your clocks **FORWARD 1 HOUR** upon retiring on **WEDNESDAY** evening or first thing **THURSDAY** morning.

Disney Cruise Line PORT ADVENTURES

Please check your tour tickets for meeting times and locations. Visit the Port Adventures Desk, Deck 5, Midship for any questions.

DINNER MENU

Animator's Palate: Pirates Menu
Enchanted Garden: Pirates Menu
Royal Court: Pirates Menu

DRINK OF THE DAY

Sunken Treasure (Alcoholic)
Princess Delight (Non Alcoholic)

IMPORTANT NUMBERS

Fire/Security: 7-3001
Medical Emergency: 7-3000
Health Center: 7-1923

ADULT ACTIVITY HIGHLIGHTS



SENSES SPA FITNESS CLASSES & SEMINARS

Sunrise Stretch - Donald's Pool - 7:00 a.m.
Fab Abs - Donald's Pool - 7:30 a.m.
Body Sculpt Boot Camp (Nom. Fee) - Senses Fitness Center - 8:00 a.m.
Pilates - Senses Fitness Center - 4:00 p.m.
Complimentary Footprint Analysis - Senses Spa & Salon - 5:00 p.m.

CLUB 18*21 - MIXER

Currents, Deck 13, Forward - 10:00 p.m.
Club 18*21 is an exclusive gathering for young adult Guests. Come meet some of your fellow cruisers and share stories of your cruise thus far, before we head up on deck for Buccaneer Blast and Club Pirate.

CLUB
18*21

LIVE PIANO WITH MICHAEL GODWIN

La Piazza, Deck 4, Aft - 7:00 p.m. & 9:30 p.m.
Join Michael Godwin as he plays piano live for your listening pleasure.

LIVE GUITAR WITH DAVID KENNY

O'Gills Pub, Deck 4, Aft - 7:00 p.m. & 9:30 p.m.
Join David Kenny as he plays live for your listening pleasure.

TEAM TRIVIA

O'Gills Pub, Deck 4, Aft - 7:45 p.m.
Think you have the best team to win? Come and join your Cruise Staff team for this fun Team Trivia.

KRAZY KARAOKE FOLLOWED BY CLUB DJ CLINT KUPER

The Tube, Deck 4, Aft - 11:00 p.m.
Take to the stage, grab a microphone and sing your favorite tunes with your Club Host and Cruise Staff DJ. After join Club DJ Clint Kuper as he rocks the night away.



FUN FOR ALL AGES HIGHLIGHTS

PIRATE TRIVIA

D Lounge, Deck 4, Midship - 3:15 p.m.
Test the depths of your pirate knowledge with your Cruise Staff at this swashbuckling trivia event.



CHIP-IT GOLF (12+)

Lobby Atrium, Deck 3, Midship - 3:45 p.m.
It's par for the course for our Guests 12 and older to compete on our special "greens" in this fun tournament.

PIRATE PALOOZA

D Lounge, Deck 4, Midship - 5:00 p.m.
Yo ho, matey's! Jump aboard, junior pirates, and get ready to set sail for fun and games at our Pirate Palooza!

A PIRATE'S LIFE FOR ME

D Lounge, Deck 4, Midship - 6:30 p.m. & 9:30 p.m.
Calling all Pirates, we be! If ye have an adventurous spirit or pirate savvy, come spin the "Wheel of Destiny" fer a treasure trove of fun be ripe for the takin' in this action packed pirate game show.



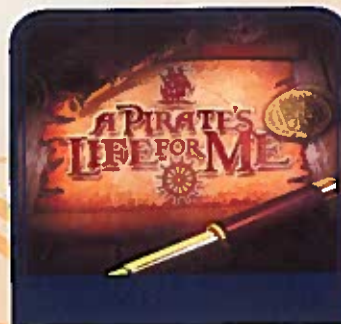
MICKEY'S PIRATES IN THE CARIBBEAN

Deck Stage, Deck 11, Midship - 7:45 p.m.
It's a Pirate Celebration, me hearties! Come experience all the pirate fun alongside Captain Mickey Mouse and his famous Pirate Crew. Play, dance and acquire all the pirate skills needed to become an official member of Mickey's Pirate Crew! (Weather Permitting)



FAMILY SUPERSTAR KARAOKE

D Lounge, Deck 4, Midship - 8:30 p.m.
Join your Cruise Staff in D Lounge tonight and sing along to your favorite song - fun for everyone.



Calling all Pirates, we be! If ye have an adventurous spirit or pirate savvy, come spin the "Wheel of Destiny," fer a treasure trove of fun be ripe for the takin' in this action packed pirate game show.

*D Lounge,
Deck 4, Midship,
6:30 p.m. & 9:30 p.m.*



Take to the stage, grab a microphone and sing your favorite song with your Club Hostess, Jo, and DJ Marius.

*The Tube (18+),
Deck 4, Aft,
11:00 p.m.*

YOUTH ACTIVITY HIGHLIGHTS

DINE & PLAY

A convenience for families dining at 8:15 p.m., our Youth Activities Counselors will be available at 9:15 p.m. at the entrance of Royal Court, Enchanted Garden and Animator's Palate dining rooms to bring registered children to join the fun in the Youth Activity areas.



Deck 5, Midship (7-1440)
(3-12 years old) 8:00 a.m. - 10:30 p.m.

HEFFALUMP EXPODISHUN

9:15 a.m.
The Heffalump is missing! Help us find him before the Wozzles do!

JOURNEY TO NEVERLAND

6:15 p.m.
Join Peter Pan as he takes you on an adventure on the Magic Playfloor.



Deck 5, Midship (7-1445)
(3-12 years old) 9:00 a.m. - 12:00 mid

STITCH'S ADVENTURE SQUAD

3:30 p.m.
Stitch, everyone's favorite alien, is making an appearance to share some of his mischievous games and activities.

GLOW JAM

11:00 p.m.
Join us for a glow-in-the-dark party with lots of games, fun and dancing for all.



Deck 13, Midship (7-9743)
(11-14 years old) 9:00 a.m. - 1:00 a.m.

VIDEO SCAVENGER HUNT

1:45 p.m.
We have a list of items for you to collect at various locations throughout the ship, first person to collect all these items wins.

GENDER WARS

11:00 p.m.
Join us as we find out who really are the king or queen of the castle.



Entrance on Deck 4, Forward (7-9418)
(14-17 years old) 11:00 a.m. - 2:00 a.m.

ESPN DREAM TEAM DRAFT DAY - BASEBALL

4:15 p.m.
Play ball! Join the "Commissioner" and engage in this interactive fantasy baseball draft unlike anything you've ever seen! Can YOU draft the greatest baseball team of All-Time?

A PIRATE'S LIFE FOR ME

11:45 p.m.
Yo ho, yo ho, a Pirate's Life for Me! Aarrgh me mateys! Put your knowledge to the test!

YOUTH ACTIVITIES OPEN HOUSE

Open House is an opportunity for all to come and participate in a variety of exciting activities and free time in the Oceaneer Club, Oceaneer Lab, It's A Small World Nursery, Vibe and Edge throughout the cruise. During these times secured programming will still be offered in the other venue for those looking to check their children into care.

Disney's Oceaneer Lab: 9:00 a.m. - 11:00 a.m.
Vibe: 11:00 a.m. - 12:00 p.m. & 6:45 p.m. - 8:30 p.m.
Edge: 9:00 a.m. - 10:00 a.m. & 5:00 p.m. - 6:30 p.m.



7:45 p.m.
Pirate Games start at 7:30 p.m.
Deck 11 & 12 Mark the Spot
It's a Pirate Celebration, me hearties!
Come experience all the pirate fun alongside Captain Mickey Mouse and his famous Pirate Crew.
(Weather Permitting)



Buccaneer Blast Fireworks
What's a pirate party without some fireworks to remind the other ships who be ruling the oceans blue?

10:30 p.m.
Deck 11 & 12 Mark the Spot

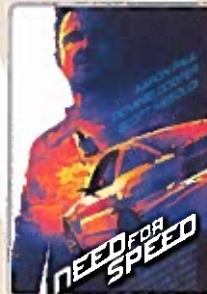
Fireworks will be on display Starboard side
Seen best from Deck 11, center pool area, and on Deck 12.
(Weather Permitting)

Club Pirate

If ye be a fan of Pirates of the Caribbean, tis time to revel in the night at the hottest dance club in all the seven seas.
(Immediately following Buccaneer Blast) (Weather Permitting)

BUENA VISTA THEATRE

Deck 4 & 5, Midship
Today's Movies



12:00 p.m.
Duration: 2 hrs 10 mins
Rating: PG-13



2:30 p.m. & 11:00 p.m.
Duration: 2 hrs 16 mins
Rating: PG-13



5:15 p.m. & 8:15 p.m.
Duration: 1 hr 52 mins
Rating: PG

MORE TO ENJOY WHILE ONBOARD

PORT AND SHOPPING INFORMATION

Join Johan at Diamonds International at the end of the pier and find out what makes Cozumel the most famous shopping port in the Western Caribbean. Don't miss Del Sol & Carlolha for all your Cozumel souvenirs! Make sure to pick up your Map & Shopping Coupons on the Gangway.



EASTERN, WESTERN OR SOUTHERN CARIBBEAN

Set your compass for the Caribbean! Disney Cruise Line offers a variety of 7-night sailings to exotic ports in the Eastern, Western or Southern Caribbean. Visit the Onboard Sales Desk today to explore options. Remember to ask about our special onboard booking offer!



DISNEY VACATION CLUB® GROUP PREVIEW

Want to learn more about taking magical vacations year after year? Please see a Disney Vacation Club representative on Deck 4, Midship, or call 7-2805 from your stateroom phone for more information about our interactive group presentation.



ONBOARD AIRLINE CHECK IN

If you would like to have your boarding passes printed for you onboard and have your luggage taken to the airport for you, register by midnight tonight. If you have a Disney Cruise Line airport transfer to Orlando International Airport and fly with one of the participating airlines, stop at Guest Services, Deck 3, Midship to register.

Connect@Sea

We are now offering a NEW and improved Internet service to stay connected on your cruise like no other in the industry! Internet packages range from \$0.25 per MB - \$89.00 (1000 MB package). For more information contact your Connect@Sea Expert or Guest Services onboard.

FREE ON DEMAND TV

Watch Disney movies, Hollywood features and even captioned content, plus much more "On Demand" for FREE in the comfort of your stateroom! Bookmark your movie and come back to watch it later. Press MENU on your stateroom television remote control, and follow the prompts.

Disney Cruise Line PORT ADVENTURES

Hola! We have arrived at the island paradise of Cozumel just off the coast of Mexico. This is the perfect day to enjoy the beach on Cozumel or take a tour to visit the ancient Mayan ruins of Tulum on the Mexican mainland. There is a myriad of options so make sure to book your place at the Port Adventures Desk, Deck 5, Midship.



SENSES
SINCE 1984

SPA TASTER SPECIAL

TWILIGHT TREATMENTS

- Wellbeing Massage
- Skin Bliss Facial
- Slimming Treatment
- Spa Taster

Choose any 50 min. service for only \$99

PIRATE'S LEAGUE

Come and join Captain Jack Sparrow's crew and get your piratical transformation, when pirates ransack the Bibbidi Bobbidi Boutique. Learn how to be a true and honest pirate! Located on Deck 5, Midship, across from the Port Adventures Desk.



Shutters GET THE PICTURE

Order a Get the Picture! photo disc and share your vacation memories digitally! No need to decide which photos to take home now, select your photos from the comfort of your home. Print, send and share your photos easily! Hurry as supplies are limited.

Terms and conditions apply. Photos captured on your vacation are only available for purchase during this cruise.

SHOPPING

UNIQUE SEA BAGS MADE FROM RECYCLED SAILS

Crafted in Portland, Maine, from real sails collected from sailing communities all over the world, breathing new life into recently retired sails, our totes embody the magic of the sea and bring to every Sea Bags owner a bit of the mystery surrounding the specific sail used in the making of their tote. Visit White Caps today to view the entire collection. Deck 3, Forward.

PETITE ART PRINTS AT THE VISTA GALLERY

Are you an art lover on a budget? Do you have limited space in your suitcase or on your walls at home? There's no need to miss out on owning inspiring creations by some of Disney's greatest artists! Stop by the Vista Gallery and check out the various petite prints of artwork created by these celebrated artists. Deck 4, Midship.

LIGHT UP THE NIGHT

Glow merchandise is only available on Pirate Night! Don't miss your opportunity to light up the night! Stop by Quacks, Deck 11, Starboard to complete your pirate attire!

PIRATE PARTY GEAR

Arrgh...It's time to embrace your inner pirate! Make your way to Mickey's Mainsail, Deck 3, Forward, to find a treasure trove of pirate gear! Everything from costumes and apparel to hats and accessories!

EFFY JEWELRY SPECIAL OFFER

Famous for the use of vibrant colored gemstones, Effy designs fine jewelry collections for those in search of bold, stylish looks. Receive a complimentary Effy scarf and jewelry pouch with each Effy jewelry purchase. While supplies last. Offer is not affiliated with Disney Cruise Line®. White Caps, Deck 3 Forward.

Due to port regulations, when the ship is docked, the stores will remain closed.

IMPORTANT INFORMATION

Security Notice

All Guests (including children) who wish to disembark the ship are required to present their Key to the World card at the gangway. A photo ID is also required for those Guests who are 18 years of age or older. Guests under the age of 18 are required to have a parent, guardian or other responsible adult sign an authorization form at the Guest Service Desk if they wish to go ashore unaccompanied or with any adult from another stateroom.

Sunscreen/Insect Repellent Advisory

Use sunscreen first and protect against mosquito borne illnesses by applying insect repellent on top of sunscreen when going ashore.

Cold and Flu Reminder

Please wash hands frequently and thoroughly, particularly before meals. Contact the Health Center by dialing 7-1923, should anyone in your party become ill.

Corridor Quiet Hours

As a courtesy to all our Guests, please recognize quiet hallway hours from 10:00 p.m. til 8:00 a.m.

Inclement Weather

For the safety of all Guests, outdoor events may be changed due to unforeseen weather conditions.

Environmental Message

With Disney's commitment to the Environment, please refrain from throwing anything over the Ship's side. Thank you!

No Reserved Seats Policy

As a courtesy to all our Guests, we kindly advise that the saving of seats is not permitted in the Walt Disney Theatre, and the saving of the sun loungers is not permitted on Deck 11, 12, and 13. Items left unattended will be returned to lost and found at Guest Services, Deck 3 Midship.

Smoking

For the comfort of our guests, the following areas are designated as smoking areas:

- Deck 13, forward, port side by Currents
- Deck 12, aft, port side outdoor area that is accessible through the Meridian Lounge
- Deck 4, aft, port side from 6:00 p.m. to 6:00 a.m. only (all of Deck 4 is non-smoking from 6:00 a.m. to 6:00 p.m.) Smoking is prohibited inside all guest staterooms and on stateroom verandahs. Guest found smoking in their staterooms or on their verandahs will be charged a \$250 stateroom recovery fee.

Walt Disney Theatre

Theatrical performances may use artificial fog, strobe lights, pyrotechnics and other special effects. For the safety of our performers and the comfort of those around you, the use of any photography, video recording device or any electronic equipment is prohibited.

Verandah Safety

Please do not leave any combustible materials on your balcony when not present in your stateroom for safety reasons.

Morning	8:30	8:45	9:00	9:15	9:30	9:45	10:00	10:15	10:30	10:45	11:00	11:15	11:30	11:45	12:00	12:15	12:30	12:45	1:00	1:15	1:30															
FUNNEL VISION	Atlantis: The Lost Empire (PG) Funnel Vision						The Emperor's New Groove (G) Funnel Vision						Treasure Planet (PG) Funnel Vision																							
BUENA VISTA THEATRE	Need for Speed (PG-13) Duration: 2 Hours 10 Minutes																																			
CHARACTER	Please refer to Character Board in Lobby Atrium for today's Character Appearances Don't forget your Camera to capture those Magical Moments!																																			
FUN FOR ALL AGES	Port Adventures - Please check your tickets for meeting times and locations																																			
	Youth Activities Open House ☺ Oceaneer Lab						Midship Detective Agency Deck 2 & 5, Midship																													
	Youth Activities Open House ☺ Edge						Youth Activities Open House ☺ Vibe																													
ADULTS	Friends of Bill W. Outdoor												Giant Jenga O'Gills Pub																							
	Books and Magazines available in Cove Cafe																																			
VIBE 14-17 YEARS OLD							Youth Activities Open House ☺						Sun Deck Fun						Smoothie Time																	
EDGE 11-14 YEARS OLD	Youth Activities Open House ☺						Craft Corner						Xbox® Challenge						Matinee Movie																	
OCEANEER LAB 3-12 YEARS OLD	Youth Activities Open House ☺												Wii Challenge						Game Challenge																	
	Craft Corner ♡						Clarabelle's Moo Juice ♡						Lunch						Pictionary																	
OCEANEER CLUB 3-12 YEARS OLD	Craft Corner ♡						Heffalump Expodishun ♡						Wii Challenge						Magic PlayFloor						Parachute Games						Little Einstein's Adventure					

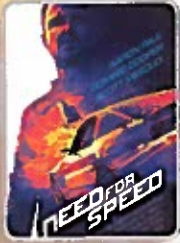
Afternoon	1:45	2:00	2:15	2:30	2:45	3:00	3:15	3:30	3:45	4:00	4:15	4:30	4:45	5:00	5:15	5:30	5:45	6:00	6:15	6:30	6:45															
FUNNEL VISION	Wreck-It Ralph (PG) Funnel Vision						Peter Pan (G) Funnel Vision																													
BUENA VISTA THEATRE	Captain America: The Winter Soldier (PG-13) Duration: 2 Hours 16 Minutes												Muppets Most Wanted (PG) Duration: 1 Hour 52 Minutes																							
CHARACTERS							Captain America Preludes						Hook & Smee Lobby Atrium (S)						Minnie Lobby Atrium (I)						Goofy Lobby Atrium (S)											
							Peter Pan Lobby Atrium (P)						Mickey Lobby Atrium (P)						Donald Dk 4, Bakery																	
FUN FOR ALL AGES	Pictionary Challenge D Lounge						Coke Lobby Atrium (12+)						Captain America: The Winter Soldier (PG-13) DOLBY 3D Walt Disney Theatre Duration: 2 Hours 16 Minutes																							
							Pirate Trivia D Lounge						Pirate Crafts La Piazza						Pirate Palooza D Lounge						A Pirate's Life For Me D Lounge											
ADULTS	Xbox Kinect™ - Wipeout Challenge O'Gills Pub						Footprint Analysis Senses Spa & Salon																													
	Board Games Available in O'Gills Pub												Pilates Senses Fitness Center						Live Guitar with David Kenny Deck 12, Forward																	
VIBE 14-17 YEARS OLD	Anyone Can Cook: Pizza						Photo Hunt						ESPN Dream Team Draft Day - Baseball						Sports Deck Fun						FIFA Challenge						Open House					
EDGE 11-14 YEARS OLD	Video Scavenger Hunt						Brains and Brawns						Sports Deck Fun						Game Challenge						Youth Activities Open House ☺						Wii Challenge					
OCEANEER LAB 3-12 YEARS OLD	Game Challenge												Craft Corner ♡												Craft Corner ♡											
							Float Fun Trivia						Sitch's Adventure Squad						Game Challenge						Dinner						A Pirate's Life For Me					
OCEANEER CLUB 3-12 YEARS OLD	Craft Corner ♡						Little Einstein's Adventure						Disney Animation: Creating a Character						Game Challenge						Jake and the Neverland Pirates						Journey to Neverland					

Evening	7:00	7:15	7:30	7:45	8:00	8:15	8:30	8:45	9:00	9:15	9:30	9:45	10:00	10:15	10:30	10:45	11:00	11:15	11:30	11:45	12:00																											
FUNNEL VISION	Muppet Treasure Island (G) Funnel Vision												Buccaneer Blast & Club Pirate Funnel Vision						Pirates of the Caribbean I (PG-13) Funnel Vision																													
BUENA VISTA THEATRE	Muppets Most Wanted (PG) Duration: 1 Hour 52 Minutes												Captain America: The Winter Soldier (PG-13) Duration: 2 Hours 16 Minutes																																			
CHARACTERS	Stitch Dk 4, Bakery		Captain America Preludes		Pirates Deck Stage				Daisy Lobby Atrium (S)				Minnie Lobby Atrium (S)																																			
	Mickey Lobby Atrium (P)						Family Superstar Karaoke D Lounge				Donald Lobby Atrium (P)		Mickey Lobby Atrium (P)																																			
FUN FOR ALL AGES	Pirate Games Dk Stage				Captain America: The Winter Soldier (PG-13) DOLBY 3D Walt Disney Theatre Duration: 2 Hours 16 Minutes				A Pirate's Life For Me D Lounge				Buccaneer Blast followed by Club Pirate Deck Stage, Deck 11, Midship																																			
ADULTS	Live Guitar with David Kenny O'Gills Pub		Team Trivia O'Gills Pub						David Kenny LIVE (Club 18*21 - Mixer) O'Gills Pub												Krazy Karaoke followed by Club DJ Clint Kuper The Tube																											
	Live Piano with Michael Godwin La Piazza								Live Piano with Michael Godwin La Piazza																																							
VIBE 14-17 YEARS OLD	Youth Activities Open House ☺						Aquaduck Fun						Gotcha Registration						Pirate Prep						Fireworks						Deck Party						A Pirate's Life For Me											
EDGE 11-14 YEARS OLD	Wii Challenge						Game Challenge						Aquaduck Fun						Pirate Prep						Pirate Games						Fireworks						Gender Wars						A Pirate's Life For Me					
OCEANEER LAB 3-12 YEARS OLD	Magic PlayFloor ♡						Pirate Games ♡												Craft Corner ♡						Glow Jam ♡																							
	Game Challenge						Pirate Prep ♡						Craft Corner ♡						Pirates of the Caribbean Tides of Fortune																													
OCEANEER CLUB 3-12 YEARS OLD	Disney Cruise Line Trivia						Pirate Prep ♡						Game Challenge																																			
	Scavenger Hunt												So You Want to be a Pirate?																																			

Symbol for activities that will be repeated during the cruise
 Youth Activities Open House
 Fold along the dotted lines and take me with you so you don't miss any of the fun!
 IN THE SPOTLIGHT SERIES
 SOLVE IT SERIES
 JUMP UP! SERIES
 CREATE & INVENT SERIES
 CLUBHOUSE SERIES
 STOP-BOC! SERIES

BUENA VISTA THEATRE

Deck 4 & 5, Midship



12:00 p.m.
Duration:
2 hrs 10 mins
Rating: PG-13



2:30 p.m. & 11:00 p.m.
Duration:
2 hrs 16 mins
Rating: PG-13



5:15 p.m. & 8:15 p.m.
Duration:
1 hr 52 mins
Rating: PG

YOUTH ACTIVITIES THEMED EXPERIENCES

- CLUBHOUSE SERIES** focuses on movement and features content which appeals to younger children.
- JUMP UP! SERIES** includes large group games & movement-oriented activities.
- IN THE SPOTLIGHT SERIES** focuses on children's stage presence with lots of activities and enthusiasm.
- STORYBOOK SERIES** is designed with a strong connection to the Disney classic stories.
- CREATE & INVENT SERIES** will have a tactile focus allowing children to create and admire their work.
- TAKE IT AWAY SERIES** are less active, but will challenge children with problem/solutions-based activities.

YOUTH ACTIVITIES OPEN HOUSE

A non-secured program with activities for families, adults and children of all ages to enjoy together.

SHIP DIRECTORY

YOUTH ACTIVITIES

DISNEY'S OCEANEER CLUB	DECK 5, MID	8:00 AM - 10:30 PM
DISNEY'S OCEANEER LAB	DECK 5, MID	9:00 AM - 12:00 MID
EDGE	DECK 13, MID	9:00 AM - 1:00 AM
VIBE	DECK 4, FWD	11:00 AM - 2:00 AM
IT'S A SMALL WORLD NURSERY	DECK 5, MID	8:00 AM - 11:00 PM

POOLS & MORE

*Children under 12 must have adult supervision in pool areas.

AQUADUCK	DECK 12, MID	10:00 AM - 8:30 PM 11:00 PM - 12:00 MID
AQUALAB	DECK 12, AFT	1:00 PM - 7:00 PM
DONALD'S POOL	DECK 11, MID	9:00 AM - 5:30 PM
MICKEY'S POOL	DECK 11, MID	6:00 AM - 5:30 PM
MICKEY'S SLIDE	DECK 11, MID	9:00 AM - 5:30 PM
NEMO'S REEF	DECK 11, MID	9:00 AM - 6:00 PM
QUIET COVE POOL (18+)	DECK 11, FWD	6:00 AM - 12:00 MID
SATELLITE FALLS	DECK 13, FWD	6:00 AM - 8:00 PM

RECREATION

GOLF/SPORTS SIMULATORS	DECK 13, AFT	9:00 AM - 6:00 PM
GOOFY GOLF	DECK 13, AFT	8:00 AM - 7:30 PM
GOOFY'S SPORTS DECK	DECK 13, AFT	8:00 AM - 6:00 PM
MIDSHIP DETECTIVE AGENCY	DECKS 2 & 5, MID	9:00 AM - 10:00 PM
PORT ADVENTURES DESK	DECK 5, MID	8:00 AM - 11:00 AM
SENSES FITNESS CENTER (18+)	DECK 11, FWD	6:30 AM - 10:00 PM

GENERAL INFORMATION

ARR-CADE	DECK 11, AFT	24 HOURS
DISNEY VACATION CLUB	DECK 4, MID	5:30 PM - 10:00 PM
GUEST SERVICES	DECK 3, MID	24 HOURS
MEDICAL HEALTH CENTER	DECK 1, FWD	9:30 AM - 11:00 AM 4:30 PM - 7:00 PM
ONBOARD SALES DESK	DECK 4, MID	9:00 AM - 10:00 AM 4:00 PM - 6:00 PM 7:30 PM - 10:00 PM
PORT & SHOPPING DESK	DECK 4, MID	7:30 PM - 8:30 PM
PRELUDES	DECK 3, FWD	4:45 PM - 5:30 PM 7:30 PM - 8:15 PM
SENSES SPA AND SALON	DECK 11, FWD	8:00 AM - 10:00 PM
SHUTTERS PHOTO GALLERY	DECK 4, MID	5:00 PM - 10:30 PM
SHUTTERS DIGITAL	DECK 4, MID	24 HOURS

SHOPPING

BIBBIDI BOBBIDI BOUTIQUE	DECK 5, MID	9:00 AM - 9:00 PM
MICKEY'S MAINSAIL	DECK 3, FWD	6:15 PM - 11:00 PM
QUACKS	DECK 11, MID	6:45 PM - 10:30 PM
SEA TREASURES	DECK 3, FWD	6:15 PM - 11:00 PM
VISTA GALLERY	DECK 4, MID	6:15 PM - 10:00 PM
WHITE CAPS	DECK 3, FWD	6:15 PM - 11:00 PM
WHOZITS & WHATZITS	DECK 11, MID	6:45 PM - 10:30 PM

DINNER MENU

Animator's Palate: Pirate's Menu
Enchanted Garden: Pirate's Menu
Royal Court: Pirate's Menu
Dining Times: 5:45 p.m. & 8:15 p.m.

DRINK OF THE DAY

Sunken Treasure (Alcoholic)
Princess Delight (Non-Alcoholic)

WEATHER FORECAST

Tonday: Partly Cloudy
High: 80°F/30°C
Tomorrow: Showers
High: 80°F/30°C

Evening Attire: Pirate/Cruise Casual

DINING & LOUNGES

BREAKFAST

CABANAS CONTINENTAL	DECK 11, AFT	6:30 AM - 7:00 AM
CABANAS	DECK 11, AFT	7:00 AM - 10:45 AM
ENCHANTED GARDEN	DECK 2, MID	8:00 AM - 10:30 AM
ROYAL COURT	DECK 3, MID	8:00 AM - 9:30 AM

LUNCH

CABANAS	DECK 11, AFT	12:00 PM - 2:15 PM
FILLMORE'S FAVORITES	DECK 11, MID	10:45 AM - 6:00 PM
LUIGI'S PIZZA	DECK 11, MID	10:45 AM - 6:00 PM
ROYAL COURT	DECK 3, MID	12:00 PM - 1:30 PM
TOW MATER'S GRILL	DECK 11, MID	10:45 AM - 6:00 PM

DINNER

ANIMATOR'S PALATE	DECK 3, AFT	5:45 PM & 8:15 PM
ENCHANTED GARDEN	DECK 2, MID	5:45 PM & 8:15 PM
ROYAL COURT	DECK 3, MID	5:45 PM & 8:15 PM
CABANAS TABLE SERVICE	DECK 11, AFT	6:30 PM - 8:30 PM
PALO (18+) <small>Reservations Req. & Now for Arrival</small>	DECK 12, AFT	6:00 PM - 8:30 PM
REMY (18+) <small>Reservations Req. & Now for Arrival</small>	DECK 12, AFT	6:00 PM - 8:30 PM

LATE NIGHT SNACKS

CABANAS PIRATES BUFFET	DECK 11, AFT	10:45 PM - 11:30 PM
LUIGI'S PIZZA	DECK 11, MID	9:30 PM - 12:30 AM

ADDED FEATURES

BEVERAGE STATION	DECK 11, MID	24 HOURS
EYE SCREAM	DECK 11, MID	11:00 AM - 11:00 PM
ROOM SERVICE	DIAL 0	24 HOURS

ENTERTAINMENT - LOUNGES - BARS

Adults must be 21 and older to consume alcoholic beverages.

BON VOYAGE	DECK 3, MID	3:00 PM - 10:30 PM
COVE BAR (18+)	DECK 11, FWD	11:00 AM - 11:00 PM
COVE CAFE (18+)	DECK 11, FWD	7:00 AM - 12:00 MID
CURRENTS (18+)	DECK 13, FWD	11:00 AM - 12:00 MID
D LOUNGE	DECK 4, MID	SHOWTIMES
FROZONE TREATS	DECK 11, MID	12:00 PM - 11:00 PM
LA PIAZZA (18+ AFTER 9:00 PM)	DECK 4, AFT	5:00 PM - 12:00 MID
MERIDIAN (18+)	DECK 12, AFT	12:00 PM - 12:00 MID
O'GILLS PUB (18+ AFTER 9:00 PM)	DECK 4, AFT	4:00 PM - 12:00 MID
OOH LA LA (18+)	DECK 4, AFT	5:00 PM - 12:00 MID
OUTLOOK	DECK 14, MID	SUNSET TIMES
SKYLINE (18+)	DECK 4, AFT	5:00 PM - 12:30 AM
THE TUBE (18+ AFTER 9:00 PM)	DECK 4, AFT	9:30 PM - 2:00 AM
VISTA CAFE	DECK 4, MID	7:00 AM - 10:30 PM
WAVES	DECK 12, AFT	2:00 PM - 11:00 PM

Public Health Advisory: Consuming raw or under-cooked meats, poultry, seafood, shellfish, or eggs may increase your risk for food borne illness, especially if you have certain medical condition

TIME ZONE CHANGE

Remember to turn your clocks **FORWARD 1 HOUR** upon retiring on **WEDNESDAY** evening, or first thing **THURSDAY** morning.



All Aboard: 5:45 p.m.

SHIP'S AGENT IN COZUMEL

ACS (Agencia Consignataria del Sureste), Calle 6 Norte No. 14 X
10 Y 15 Ave., Cozumel, Q. Roo., Mexico 77660. Tel. 521-987-873-9490

IMPORTANT NUMBERS

Fire/Security: 7-3001
Medical Emergency: 7-3000
Health Center: 7-1923

Character Appearances

CAPTAIN AMERICA

Preludes
4:00 p.m., 5:15 p.m.
& 7:15 p.m.

CAPTAIN HOOK & MR SMEE

Lobby Atrium (S) - 4:45 p.m.
Deck 4, Balcony - 10:00 p.m.

PIRATE CHIP & DALE

Deck 4, Balcony - 4:45 p.m.

PETER PAN

Lobby Atrium (P) - 4:45 p.m.

CAPTAIN JACK SPARROW

Lobby Atrium (V)
5:00 p.m. & 7:00 p.m.

JAKE - THE NEVERLAND PIRATE

Deck 4, Balcony - 5:15 p.m.

PIRATE MICKEY MOUSE

Lobby Atrium (P)
5:15 p.m., 7:00 p.m.
& 10:00 p.m.

PIRATE MINNIE MOUSE

Lobby Atrium (S)
5:15 p.m. & 10:00 p.m.

PIRATE DONALD

Deck 4, Balcony - 5:45 p.m.
Lobby Atrium (P) - 9:30 p.m.

PIRATE GOOFY

Lobby Atrium (S) - 5:45 p.m.
Deck 4, Balcony - 9:30 p.m.

PIRATE STITCH

Deck 4, Balcony - 7:00 p.m.

MICKEY'S PIRATES

Deck 11, Midship - 7:45 p.m.

PIRATE DAISY DUCK

Lobby Atrium (S) - 9:30 p.m.



(H) Hallway - (S) Starboard Side - (P) Port Side - (V) Vestibule

For details of daily Disney character appearances, refer to the character line in your Navigator Grid or the digital character board in the Lobby Atrium.