

# PERSONAL NAVIGATOR



MONDAY, APRIL 28, 2014

Sunrise 5:59 a.m. Sunset 6:47 p.m.  
Evening Attire: Cruise Casual  
All Ashore: 11:15 a.m. All Aboard: 5:00 p.m.

Today: Partly Cloudy High: 80°F/27°C  
Tomorrow: Partly Sunny High: 88°F/31°C

GRAND CAYMAN, CAYMAN ISLANDS

The Music & Comedy of

# John Charles



WALT DISNEY THEATRE

Deck 3 & 4 Forward  
6:15 p.m. & 8:30 p.m.



As a courtesy to all Guests, we kindly advise that the saving of seats is not permitted in the Walt Disney Theatre.



Assistance available at the entrance to the Walt Disney Theatre 30 minutes prior to show time.

## Grand Cayman Port Information

The Cayman Islands were first sighted by European explorers in 1503, in a wayward voyage headed by Christopher Columbus. Though the two smaller islands were discovered on this fateful trip, the largest of them, Grand Cayman, would escape attention by sailors until 1655, when the area was claimed by the British. For centuries from the time of their discovery, the Cayman Islands would provide a place for ships to come ashore and rest on their journeys into the Caribbean. Crewmen on these ships would routinely replenish themselves on the meat provided by the native population of turtles.

By the 19th century, Grand Cayman was overtaken by pirates. It would take political upheaval and the establishment of a local government under British rule to transform the island into what it is today.

Discover a place that—once a welcome refuge for buccaneers—is today a treasured tourist hotspot. From sparkling surf to the bounty of local shops, whatever your pleasure, you'll find it here.



Get ready for a jammin', slammin', splashin' good time at the new Disney Channel Poolside Jam Fest at Sea! Imagine all of your favorite Disney Channel music stars coming together for an afternoon of contests, great music, and hot videos all under the Caribbean sun!

Deck Stage,  
Deck 11, Midship,  
4:30 p.m.

## Don't Miss:

### Art of the Theme Show Tour (18+)

Pre-Book at Guest Services, Deck 3, Midship  
Join us on a guided ship tour and discover the key ingredients that make the Disney Fantasy cruise ship one-of-a-kind.

### Chip-It Golf (12+)

Lobby Atrium, Deck 3, Midship - 2:30 p.m.  
It's par for the course for our Guests 12 and older to compete on our special "greens" in this fun tournament.

### Disney Animation: Cartoon Physics

D Lounge, Deck 4, Midship - 3:45 p.m.  
Go behind the scenes at Walt Disney Animation Studios and see how flat drawings and pencil lines can come to life through basic techniques such as "Stretch and Squash", and create your own "bouncing ball" animation exercise in this entertaining and fun enrichment program.

### So You Think You Know Your Family?

The Tube, Deck 4, Aft - 7:30 p.m.  
This fun-filled family game show is always full of surprises. Find out how well you know, or don't know your family!

## DOCKING - Please refer to Tender Letter

The ship anchors outside of the port and Guests take a tender to the dock. Tenders are small boats that provide transportation between the ship and the shore. Guests with special needs/disabilities wishing to leave the ship should check with Guest Services for accessible gangways.

Disney Cruise Line



## IMPORTANT INFORMATION

Please check your tour tickets for meeting times and locations.  
Visit the Port Adventures Desk, Deck 5, Midship for any questions.

## DINNER MENU

Animator's Palate: Pacific Rim Cuisine  
Enchanted Garden: Continental Market Cuisine  
Royal Court: French Dinner Cuisine

## DRINK OF THE DAY

Yellow Bird (Alcoholic)  
Lava Smoothie (Non Alcoholic)

## IMPORTANT NUMBERS

Fire/Security: 7-3001  
Medical Emergency: 7-3000  
Health Center: 7-1923



# ADULT ACTIVITY HIGHLIGHTS

## SENSES SPA FITNESS CLASSES & SEMINARS

*Sunrise Stretch* - Donald's Pool - 7:00 a.m.  
*Pub Abs* - Donald's Pool - 7:30 a.m.  
*Complimentary Footprint Analysis* - Senses Spa & Salon - 8:00 a.m.  
*Body Sculpt Boot Camp* (Nom. Fee) - Senses Fitness Center - 9:00 a.m.  
*Facial Workshop* - Senses Fitness Center - 9:15 a.m.  
*Group Cycling* - Senses Fitness Center - 4:00 p.m.  
*Fitness Frenzy* (13-17, Nom. Fee) - Senses Fitness Center - 7:00 p.m.



## TASTING CLASSES

*Cognac Tasting* (21+) - Cove Cafe - 10:00 p.m.  
*Whiskey Tasting* (21+) - Meridian - 10:30 p.m.  
Please make reservations for tastings at Guest Services for a nominal fee.  
Tasting Seminars are only for Guests 21 and Older.

## CLUB 18\*21 - MINI GOLF

*Goofy Golf, Deck 13, Aft - 4:30 p.m.*

CLUB  
18\*21

## CLUB 18\*21 - MIXER

*The Tube, Deck 4, Aft - 10:00 p.m.*

Come to join fellow cruisers your own age at our exclusive Club 18\*21 event.

## LIVE GUITAR WITH DAVID KENNY

*Deck 12, Forward - 3:00 p.m. & 4:00 p.m.*  
*O'Gills Pub - 10:00 p.m. & 11:00 p.m.*

Join David Kenny as he plays live for your listening pleasure.

## DIAMOND AND GEMSTONE SEMINAR

*La Piazza, Deck 4, Aft - 9:30 a.m.*

Join your Port and Shopping Guides, and become an educated shopper. They will teach you about the exotic gemstones found in the Caribbean. FREE Tanzanite Earrings for all who attend and a raffle to win a Gemstone Pendant!

## ICE BREAKERS

*The Tube, Deck 4, Aft - 10:00 p.m.*

Fancy some fun? Want to get to know your fellow guests? Then join us as we break the ice in this fun filled game show

## 80'S/90'S REMIX WITH CLUB DJ CLINT KUPER

*The Tube, Deck 4, Aft - 11:00 p.m.*

Join Club DJ Clint Kuper, as he spins the tunes and remix the 80's & 90's!

# FUN FOR ALL AGES HIGHLIGHTS



## JAKE & THE NEVERLAND PIRATES

*D Lounge, Deck 4, Midship - 8:30 a.m.*

A'Hooy there mates, Join us for an adventure in D Lounge with Jake and the Neverland Pirates.

## DISNEY TRIVIA

*O'Gills Pub, Deck 4, Aft - 9:15 a.m.*

Navigate your way through a round of questions to test how much you really know about Disney.

## SENSES SPA BINGO

*D Lounge, Deck 4, Midship - 9:30 a.m.*

Four CASH prizes to be won! Plus great spa prizes that will pamper you, including a mini facial and massages all courtesy of the Senses Spa and Salon. Serenity now! Pre Sales start 15 minutes prior to game.

BINGO



## CHIP-IT GOLF (12+)

*Lobby Atrium, Deck 3, Midship - 2:30 p.m.*

It's par for the course for our Guests 12 and older to compete on our special "greens" in this fun tournament.

## DISNEY ANIMATION: CARTOON PHYSICS

*D Lounge, Deck 4, Midship - 3:45 p.m.*

Go behind the scenes at Walt Disney Animation Studios and see how flat drawings and pencil lines can come to life through basic techniques such as "Stretch and Squash", and create your own "bouncing ball" animation exercise in this entertaining and fun enrichment program.



## SO YOU THINK YOU KNOW YOUR FAMILY?

*The Tube, Deck 4, Aft - 7:30 p.m.*

This fun-filled family game show is always full of surprises. Find out how well you know, or don't know your family!

## BOGO JACKPOT BINGO

*D Lounge, Deck 4, Midship - 7:30 p.m.*

That's right, it's time for Buy One Get One Free Bingo! Tonight only you can double your dollar as we play for 4 cash prizes, plus Disney Cruise Line exclusive prizes! The snowball cruise jackpot continues to grow and is also up for grabs! Pre Sales start 15 minutes prior to game.

BINGO

## FAMILY SUPERSTAR KARAOKE

*D Lounge, Deck 4, Midship - 9:30 p.m. & 10:45 p.m.*

Join your Cruise Staff in D Lounge tonight and sing along to your favorite song - fun for everyone.



## FAMILY FUSION

*D Lounge, Deck 4, Midship - 10:15 p.m.*

Bring the entire family and test your Disney knowledge in the high-tech interactive game show, Family Fusion.





# YOUTH ACTIVITY HIGHLIGHTS

## DINE & PLAY

A convenience for families dining at 8:15 p.m., our Youth Activities Counselors will be available at 9:15 p.m. at the entrance of Royal Court, Enchanted Garden and Animator's Palate dining rooms to bring registered children to join the fun in the Youth Activity areas.



**Deck 5, Midship (7-1440)**  
(3-12 years old) 9:00 a.m. - 12:00 mid

### CRUISIN' WITH CRUSH

11:15 a.m.

Be sure to check out Disney's Oceaneer Club to see Crush when he stops by!

### BIG TOP FUN FEST!

6:15 p.m.

It's the greatest show on Earth. Come re-discover the circus Disney style with clowns, jugglers and classic Disney cartoons.



**Deck 5, Midship (7-1445)**  
(3-12 years old) 9:00 a.m. - 12:00 mid

### PISTON CUP CHALLENGE

9:30 a.m.

It's Dinoco time and you're part of the pit crew! Design your own race car and see if you've got what it takes to end up in the Winner's Circle!

### SUPER SLOPPY SCIENCE

9:30 p.m.

Join Professor Make-O-Mess in some of the most extreme experiments you will ever see in the world of Super Sloppy Science!



**Deck 13, Midship (7-9743)**  
(11-14 years old) 9:00 a.m. - 1:00 a.m.

### ANIMATION CELLS

11:45 a.m.

Learn what it takes to be a Disney Animator, then put your new skills to the test as you create your very own animation cell.

### ESPN DREAM TEAM DRAFT DAY - BASEBALL

6:30 p.m.

Play ball! Join the "Commissioner" and engage in this interactive fantasy baseball draft unlike anything you've ever seen! Can YOU draft the greatest baseball team of All-Time?



**Entrance on Deck 4, Forward (7-9418)**  
(14-17 years old) 10:00 a.m. - 2:00 a.m.

### PUMP IT UP

9:00 p.m.

Join us in the Fitness Center for a Teen Only workout. Meet in Vibe to join in!

### GHOST VOYAGERS

11:30 p.m.

The ship has come upon some mysterious waters and strange things are afoot. Join a paranormal expert to help investigate the area and track down any evidence of ghostly beings on the ship.

# BUENA VISTA THEATRE

Deck 4 & 5, Midship  
Today's Movies



8:00 a.m.  
Duration: 1 hr 25 mins  
Rating: G

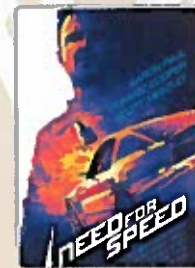


1:00 p.m.  
Duration: 1 hr 48 mins  
Rating: PG

**DOLBY 3D**



3:15 p.m. & 10:30 p.m.  
Duration: 1 hr 52 mins  
Rating: PG



5:30 p.m. & 8:00 p.m.  
Duration: 2 hrs 10 mins  
Rating: PG-13



Bring the entire family and test your Disney knowledge in the high-tech interactive game show, Family Fusion.

**D Lounge,**  
**Deck 4, Midship,**  
10:15 p.m.



### ADULT VARIETY ACT

Featuring the Magic & Mind Reading of Wayne Hoffman, as he entertains you in this adult exclusive show.

**The Tube (18+),**  
**Deck 4, Aft,**  
10:30 p.m.

## YOUTH ACTIVITIES OPEN HOUSE

Open House is an opportunity for all to come and participate in a variety of exciting activities and free time in the Oceaneer Club, Oceaneer Lab, It's A Small World Nursery, Vibe and Edge throughout the cruise. During these times secured programming will still be offered in the other venue for those looking to check their children into care.

Disney's Oceaneer Lab: 4:00 p.m. - 6:00 p.m.  
Disney's Oceaneer Club: 9:00 a.m. - 11:00 a.m.  
Vibe: 10:00 a.m. - 11:00 a.m. & 6:30 p.m. - 8:30 p.m.  
Edge: 9:00 a.m. - 10:00 a.m. & 5:00 p.m. - 6:30 p.m.



# MORE TO ENJOY WHILE ONBOARD

## PORT AND SHOPPING INFORMATION

Join Marissa and Johan at the Diamond & Gemstone Seminar in La Piazza, Deck 4 Aft at 9:30 a.m. Learn what makes a Diamond sparkle, the rarity of Amolite and why Alexandrite changes color! They will give you insider tips on shopping for gemstones in the Caribbean. Free Tanzanite Stud Earrings and a Raffle to win a Tanzanite Pendant!

## MORE MAGIC IN EUROPE

Set sail for Europe! Whether you choose the Mediterranean or northern Europe, you're sure to experience a magical voyage of culture with amazing family adventures - begin your journey today! Visit the Onboard Sales Desk to learn more about our special onboard booking offer.

## DISNEY VACATION CLUB® GROUP PREVIEW

Want to learn more about taking magical vacations year after year? Please see a Disney Vacation Club representative on Deck 4, Midship, or call 7-2805 from your stateroom phone for more information about our interactive group presentation.

## ONBOARD AIRLINE CHECK IN

If you would like to have your boarding passes printed for you onboard and have your luggage taken to the airport for you, register before Wednesday. If you have a Disney Cruise Line airport transfer to Orlando International Airport and fly with one of the participating airlines, stop at Guest Services, Deck 3, Midship to register.

## Connect @ Sea

We are now offering a NEW and improved Internet service to stay connected on your cruise like no other in the industry! Internet packages range from \$0.25 per MB - \$89.00 (1000 MB package). For more information contact your Connect@Sea Expert or Guest Services onboard.

## FREE ON DEMAND TV

Watch Disney movies, Hollywood features and even captioned content, plus much more "On Demand" for FREE in the comfort of your stateroom! Bookmark your movie and come back to watch it later. Press MENU on your stateroom television remote control, and follow the prompts.



**SENSES**  
SPA & SALON

## PAMPER PACKAGE

- 50 minute Full Body Massage
  - Foot & Ankle Massage
  - Indian Scalp Massage
  - 25 Minute Booster Facial
- ONLY \$149

Call Senses Spa & Salon, 7-1465

## BIBBIDI BOBBIDI BOUTIQUE

Deck 5, Midship

Becoming the princess of your dreams creates memories for a lifetime. Where Fairy Godmothers in training are ready with Pixie Dust and Magic! Make your reservations for princess makeovers and the Pirate League today. Limited space available. Visit Bibbidi Bobbidi Boutique or call ext. 9438 to make a reservation.



**Shutters**

## GET THE PICTURE

Order a Get the Picture! photo disc and share your vacation memories digitally! No need to decide which photos to take home now, select your photos from the comfort of your home. Print, send and share your photos easily! Hurry as supplies are limited.

*Terms and conditions apply. Photos captured on your vacation are only available for purchase during this cruise.*

## Disney Cruise Line PORT ADVENTURES

Welcome to the beautiful Cayman Islands. Take this opportunity to discover Grand Cayman's world renowned snorkeling. Dive down deep and explore the ocean floor on the Atlantis submarine or just sit back, relax and enjoy the sights and sounds of this island on the Grand Cayman Island tour. Visit our friendly Port Adventures team located Deck 5, Midship, and let us answer all your questions about Grand Cayman.

## SHOPPING

### GUESS THE CARAT WEIGHT WITH EFFY JEWELRY

Stop by White Caps anytime during store hours before 8:30 p.m. today to guess the carat weight for a chance to win a pair of Tanzanite stud earrings by Effy, whose fine jewelry designs are inspired by trends from around the globe. Winners will be announced tonight at 8:30 p.m. Also, receive a complimentary Effy scarf and jewelry pouch with each Effy jewelry purchase. While supplies last. Times subject to change without notice. Offers not affiliated with Disney Cruise Line®. Deck 3, Forward.

### VERA BRADLEY BAGS AND ACCESSORIES

With their distinctive and colorful fabrics and trims, view our collection of Vera Bradley bags and accessories including the new Vera Bradley tote bags designed especially for Disney Cruise Line® available at White Caps. Deck 3, Forward.

### UNIQUE DISNEY ART AT THE VISTA GALLERY

Stop by the Vista Gallery to view original artwork by a variety of celebrated Disney artists featuring some of your favorite Disney characters. Also check out unique Disney art painted on original dessert plates from the Animator's Palate Restaurants on the Disney Magic® Cruise Ship and Disney Wonder® Cruise Ship. Created by popular Disney artists, Mark Seppala and Joe Kaminski, these one-of-a-kind plates are available exclusively on Disney Cruise Line® while supplies last. Deck 4, Midship.

### HAIR BRAIDING ONBOARD

Add some flair to your hair when you visit a Disney Cruise Line® hair braiding station! Stop by a station today for more information and to learn all about the available braiding styles. Subject to restrictions and availability. Deck 11, Midship.

### ROYAL COURT ROYAL TEA

Hear ye, hear ye! Princes and Princesses are welcomed to join some of your favorite Disney Princesses at the Royal Court Royal Tea for an afternoon filled with music, fun, and delicious goodies! Stop by the Guest Services Desk, Deck 3, Midship, to register and to learn more about this royal event. Reservations required. Fee will apply. Limited space available.

DPR110 04 28 2014 ©DISNEY

## IMPORTANT INFORMATION

### Security Notice

All Guests (including children) who wish to disembark the ship are required to present their Key to the World card at the gangway. A photo ID is also required for those Guests who are 18 years of age or older. Guests under the age of 18 are required to have a parent, guardian or other responsible adult sign an authorization form at the Guest Service Desk if they wish to go ashore unaccompanied or with an adult from another stateroom.

### Sunscreen/Insect Repellent Advisory

Use sunscreen first and protect against mosquito borne illnesses by applying insect repellent on top of sunscreen when going ashore.

### Cold and Flu Reminder

Please wash hands frequently and thoroughly, particularly before meals. Contact the Health Center by dialing 7-1923, should anyone in your party become ill.

### Corridor Quiet Hours

As a courtesy to all our Guests, please recognize quiet hallway hours from 10:00 p.m. til 8:00 a.m.

### Inclement Weather

For the safety of all Guests, outdoor events may be changed due to unforeseen weather conditions.

### Environmental Message

With Disney's commitment to the Environment, please refrain from throwing anything over the Ship's side. Thank you!

### No Reserved Seats Policy

As a courtesy to all our Guests, we kindly advise that the saving of seats is not permitted in the Walt Disney Theatre, and the saving of the sun loungers is not permitted on Deck 11, 12, and 13. Items left unattended will be returned to lost and found at Guest Services, Deck 3 Midship.

### Smoking

For the comfort of our guests, the following areas are designated as smoking areas:  
 • Deck 13, forward, port side by Currents  
 • Deck 12, aft, port side outdoor area that is accessible through the Meridian Lounge  
 • Deck 4, aft, port side from 6:00 p.m. to 6:00 a.m. only (all of Deck 4 is non-smoking from 6:00 a.m. to 6:00 p.m.) Smoking is prohibited inside all guest staterooms and on stateroom verandahs. Guest found smoking in their staterooms or on their verandahs will be charged a \$250 stateroom recovery fee.

### Walt Disney Theatre

Theatrical performances may use artificial fog, strobe lights, pyrotechnics and other special effects. For the safety of our performers and the comfort of those around you, the use of any photographic, video recording device or any electronic equipment is prohibited.

### Verandah Safety

Please do not leave any combustible materials on your balcony when not present in your stateroom for safety reasons.



Morning	8:30	8:45	9:00	9:15	9:30	9:45	10:00	10:15	10:30	10:45	11:00	11:15	11:30	11:45	12:00	12:15	12:30	12:45	1:00	1:15	1:30	
FUNNEL VISION	Toy Story (G) Funnel Vision				Monsters, Inc. (G) Funnel Vision				Cars (G) Funnel Vision													
BUENA VISTA THEATRE	Disney Nature: Bears (G) Duration: 1 Hr 25 Min < Starts at 8:30 a.m.																		Frozen: Sing-A-Long (PG) Duration: 1 Hour 48 Minutes			
CHARACTERS	Buzz Lobby Atrium (V)		Jake DK 4, Balcony		Woody Lobby Atrium (V)		Goofy Lobby Atrium (V)		Miles & Feb Lobby Atrium (V)		Woody Lobby Atrium (V)											
FUN FOR ALL AGES	D Lounge		Bingo Pre Sales		Senses Spa BINGO D Lounge		Port Adventures - Please check your tickets for meeting times and locations.															
			Disney Trivia O Gills Pub		Midship Detective Agency Deck 2 & 5 Midship																	
ADULTS	Boot Camp (Nom. Fee) Senses Fitness Center		Diamond and Gemstone Seminar La Piazza																			
	Friends of Bill W. Outlook		Facial Workshop Senses Fitness Center		Board Games Available in O'Gills Pub																	
VIBE 14-17 YEARS OLD					Youth Activities Open House								Sun Deck Fun									
EDGE 11-14 YEARS OLD	Youth Activities Open House				Pictionary				Xbox Challenge				Animation Cells				Game Challenge					
OCEANEER LAB 3-12 YEARS OLD	Craft Corner								Human Bingo								4 square					
OCEANEER CLUB 3-12 YEARS OLD	Youth Activities Open House				Piston Cup Challenge				Craft Corner				Lunch				Craft Corner					
	Mickey's Puzzle Playtime				Magic PlayFloor				Relay Games				Cruisin' with Crush				Little Einstein's Adventure					

Afternoon	1:45	2:00	2:15	2:30	2:45	3:00	3:15	3:30	3:45	4:00	4:15	4:30	4:45	5:00	5:15	5:30	5:45	6:00	6:15	6:30	6:45			
FUNNEL VISION	Pixar Short Films (G) Funnel Vision				Jam Fest at Sea Funnel Vision				Toy Story 2 (G) Funnel Vision															
BUENA VISTA THEATRE	Frozen: Sing-A-Long (PG) Duration: 1 Hour 48 Minutes				Muppets Most Wanted (PG) Duration: 1 Hour 52 Minutes				Need for Speed (PG-13) DOLBY 3D Duration: 2 Hours 10 Minutes															
CHARACTERS	Tinker Bell Lobby Atrium (V)		Jake Lobby Atrium (V)		Mickey Lobby Atrium (V)		Peter Pan Lobby Atrium (V)		Cinderella Lobby Atrium (V)		Hook & Sneezy Lobby Atrium (V)													
FUN FOR ALL AGES	Chip 'n' Dale Lobby Atrium (12+)		Disney Animation Cartoon Physics D Lounge				Pinocchio Preludes		Stitch Preludes		Tinker Bell Lobby Atrium (V)		Aladdin DK 4, Balcony		Live Piano with Michael Godwin Lobby Atrium				The Music & Comedy of JOHN CHARLES Walt Disney Theatre					
							Deck Stage		Live Music with Fine Whines La Piazza		Family Crafts La Piazza													
ADULTS	Books and Magazines available in Cove Cafe				Group Cycling Senses Fitness Center				Club 18*21 - Mini Golf Goofy Golf															
	Board Games Available in O'Gills Pub				Live Guitar with David Kenny Deck 12, Forward				David Kenny LIVE Deck 12, Forward				Art of The Theme Show Tour Pre-Book at Guest Services											
VIBE 14-17 YEARS OLD	Video Scavenger Hunt				Anyone Can Cook				Matinee Movie				Open House											
EDGE 11-14 YEARS OLD	Float Fun Trivia				Wii Competition				Craft Corner				Sports Deck Fun				Youth Activities Open House				ESPN Dream Team Book Day - Baseball			
OCEANEER LAB 3-12 YEARS OLD	Magic PlayFloor				Disney Cruise Line Trivia				Super Sloppy Science				Pathfinders				Scavenger Hunt							
OCEANEER CLUB 3-12 YEARS OLD	Game Challenge				Dinner				Heffalump Expodishun				Big Top Fun Fest!				Little Einstein's Adventure							
	Marshmallow Olympics																							

Evening	7:00	7:15	7:30	7:45	8:00	8:15	8:30	8:45	9:00	9:15	9:30	9:45	10:00	10:15	10:30	10:45	11:00	11:15	11:30	11:45	12:00							
FUNNEL VISION	Ratatouille (G) Funnel Vision				Brave (PG) Funnel Vision																							
BUENA VISTA THEATRE	Need for Speed (PG-13) DOLBY 3D Duration: 2 Hours 10 Minutes				Muppets Most Wanted (PG) Duration: 1 Hour 52 Minutes																							
CHARACTERS	Mickey Lobby Atrium (V)		Tinker Bell Lobby Atrium (V)		Hook & Sneezy DK 4, Balcony		Aladdin Preludes		Genie Lobby Atrium (V)		Cinderella Lobby Atrium (V)		Aladdin Lobby Atrium (V)		Jake DK 4, Balcony		Genie Lobby Atrium (V)		Peter Pan DK 4, Balcony		Tinker Bell Lobby Atrium (V)		Hook & Sneezy DK 4, Balcony					
FUN FOR ALL AGES	Bingo Pre Sales		BOGO Jackpot BINGO D Lounge		The Music & Comedy of JOHN CHARLES Walt Disney Theatre				Family Superstar Karaoke D Lounge		Family Fusion D Lounge		Family Superstar Karaoke D Lounge															
	Family Dance Party The Tube		So You Think You Know Your Family? The Tube		Family Crafts La Piazza		Live Music with Andrea & Rafaela Lobby Atrium		Live Music with Andrea & Rafaela Lobby Atrium																			
ADULTS	NBA Basketball Playoffs O'Gills Pub (Subject to Satellite Availability)				DJ Requests The Tube				Ice Breakers The Tube				The Magic & Most Amazing of WAYNE HOFFMAN The Tube				80's/90's Remix with Club DJ Clint Kuper The Tube											
VIBE 14-17 YEARS OLD	Youth Activities Open House				Pump It Up				Gender Wars				Ghost Voyagers															
EDGE 11-14 YEARS OLD	Anyone Can Cook: Cupcakes				Game Challenge				Karaoke				Ghost Voyagers				Gender Wars											
OCEANEER LAB 3-12 YEARS OLD	Anyone Can Cook: Cupcakes				Pictionary				Super Sloppy Science				Xbox Challenge				Magic PlayFloor											
OCEANEER CLUB 3-12 YEARS OLD	Craft Corner				Game Challenge				Memory Wall				Once Upon a Time				Mickey's Puzzle Playtime				Camp Rocking Out!				Pathfinders			

Symbol for activities that will be repeated during the cruise  
 Youth Activities Open House  
 Youth Activities Open House  
 Fold along the dotted lines, and take me with you so you don't miss any of the fun!  
 Fold  
 IN THE SPOTLIGHT SERIES  
 SOLVE IT SERIES  
 JUMP UP! SERIES  
 CREATE & INVENT SERIES  
 CLUB-HOUSE SERIES  
 STORYBOOK SERIES



# BUENA VISTA THEATRE

Deck 4 & 5, Midship

**DOLBY 3D**



8:00 a.m.  
Duration:  
1 hr 25 mins  
Rating: G

1:00 p.m.  
Duration:  
1 hr 48 mins  
Rating: PG

3:15 & 10:30 p.m.  
Duration:  
1 hr 52 mins  
Rating: PG

5:30 & 8:00 p.m.  
Duration:  
2 hrs 10 mins  
Rating: PG-13

## Character Appearances

**CAPTAIN HOOK & MR SMEE**  
Deck 4, Balcony  
9:00 a.m., 10:00 a.m.,  
7:45 p.m. & 10:00 p.m.  
Lobby Atrium (P) - 5:45 p.m.

**GOOXY**  
Lobby Atrium (P)  
9:00 a.m. & 10:00 a.m.

**PHINEAS & FERB**  
Lobby Atrium (H)  
9:00 a.m. & 10:30 a.m.

**BUZZ LIGHTYEAR**  
Lobby Atrium (V)  
9:00 a.m. & 10:30 a.m.

**JAKE - THE NEVERLAND PIRATE**  
Deck 4, Balcony  
9:30 a.m., 10:30 a.m.,  
7:15 p.m. & 9:30 p.m.  
Lobby Atrium (P) - 4:45 p.m.

**STITCH**  
Lobby Atrium (P)  
9:30 a.m. & 10:30 a.m.  
Preludes  
5:15 p.m. & 9:30 p.m.

**WOODY**  
Lobby Atrium (V)  
9:45 a.m. & 11:00 a.m.

**MINNIE MOUSE**  
Deck 4, Balcony - 11:00 a.m.  
Lobby Atrium (H)  
5:30 p.m. & 9:30 p.m.

**DONALD DUCK**  
Lobby Atrium (P)  
11:00 a.m.  
Lobby Atrium (H)  
7:45 p.m.

**TINKER BELL**  
Lobby Atrium (V)  
4:30 p.m., 5:30 p.m.,  
7:30 p.m. & 9:30 p.m.

**PINOCCHIO**  
Preludes  
4:45 p.m. & 10:00 p.m.

**MICKEY MOUSE**  
Lobby Atrium (H)  
5:00 p.m., 7:15 p.m.  
& 10:00 p.m.

**GENIE**  
Deck 4, Balcony - 5:15 p.m.  
Preludes - 7:30 p.m.  
Lobby Atrium (P) - 9:30 p.m.

**PETER PAN**  
Lobby Atrium (P) - 5:15 p.m.  
Deck 4, Balcony - 8:15 p.m.

**CINDERELLA**  
Lobby Atrium  
5:30 p.m. & 9:45 p.m.

**ALADDIN & PRINCESS JASMINE**  
Deck 4, Balcony - 5:45 p.m.  
Preludes - 8:00 p.m.  
Lobby Atrium (P)  
10:00 p.m.

Don't forget your Camera to capture those Magical Moments!  
(H) Hallway - (S) Starboard Side - (P) Port Side - (V) Vestibule

## YOUTH ACTIVITIES THEMED EXPERIENCES

- CLUBHOUSE SERIES** focuses on movement and features content which appeals to younger children.
- JUMP UP! SERIES** includes large group games & movement-oriented activities.
- IN THE SPOTLIGHT SERIES** focuses on children's stage presence with lots of activities and enthusiasm.
- STORYBOOK SERIES** is designed with a strong connection to the Disney classic stories.
- CREATE & INVENT SERIES** will have a tactile focus allowing children to create and admire their work.
- SOLVE IT! SERIES** are less active, but will challenge children with problem/solutions-based activities.
- YOUTH ACTIVITIES OPEN HOUSE** is a non-secured program with activities for families, adults and children of all ages to enjoy together.

## SHIP DIRECTORY

YOUTH ACTIVITIES		
DISNEY'S OCEANEER CLUB	DECK 5, MID	9:00 AM - 12:00 MID
DISNEY'S OCEANEER LAB	DECK 5, MID	9:00 AM - 12:00 MID
EDGE	DECK 13, MID	9:00 AM - 1:00 AM
VIBE	DECK 4, FWD	10:00 AM - 2:00 AM
IT'S A SMALL WORLD NURSERY	DECK 5, MID	9:00 AM - 11:00 PM

## POOLS & MORE

\* Children under 12 must have adult supervision in pool areas.

AQUADUCK	DECK 12, MID	9:00 AM - 11:00 PM
AQUALAB	DECK 12, AFT	10:00 AM - 6:00 PM
DONALD'S POOL	DECK 11, MID	9:00 AM - 6:00 PM 8:00 PM - 10:00 PM
MICKEY'S POOL	DECK 11, MID	6:00 AM - 11:30 PM
MICKEY'S SLIDE	DECK 11, MID	9:00 AM - 6:00 PM
NEMO'S REEF	DECK 11, MID	9:00 AM - 6:00 PM
QUIET COVE POOL (18+)	DECK 11, FWD	6:00 AM - 12:00 MID
SATELLITE FALLS	DECK 13, FWD	6:00 AM - 8:00 PM

## RECREATION

GOLF/SPORTS SIMULATORS	DECK 13, AFT	9:00 AM - 6:00 PM
GOOXY GOLF	DECK 13, AFT	8:00 AM - 10:00 PM
GOOXY'S SPORTS DECK	DECK 13, AFT	8:00 AM - 6:00 PM
MIDSHIP DETECTIVE AGENCY	DECKS 2 & 5, MID	9:00 AM - 10:00 PM
PORT ADVENTURES DESK	DECK 5, MID	9:00 AM - 12:30 PM 7:00 PM - 8:30 PM
SENSES FITNESS CENTER (18+)	DECK 11, FWD	6:30 AM - 10:00 PM

## GENERAL INFORMATION

ARR-CADE	DECK 11, AFT	24 HOURS
DISNEY VACATION CLUB	DECK 4, MID	5:00 PM - 10:00 PM
GUEST SERVICES	DECK 3, MID	24 HOURS
MEDICAL HEALTH CENTER	DECK 1, FWD	9:30 AM - 11:00 AM 4:30 PM - 7:00 PM
ONBOARD SALES DESK	DECK 4, MID	9:00 AM - 11:00 AM 4:00 PM - 6:00 PM 7:30 PM - 10:00 PM
PORT & SHOPPING DESK	DECK 4, MID	9:30 AM - 10:30 AM 7:30 PM - 8:30 PM
PRELUDES	DECK 3, FWD	6:15 PM - 6:30 PM 8:00 PM - 8:45 PM 10:30 PM - 11:00 PM
SENSES SPA AND SALON	DECK 11, FWD	9:00 AM - 10:00 PM
SHUTTERS PHOTO GALLERY	DECK 4, MID	5:00 PM - 10:30 PM
SHUTTERS DIGITAL	DECK 4, MID	24 HOURS

## SHOPPING

BIBBIDI BOBBIDI BOUTIQUE	DECK 5, MID	9:00 AM - 9:00 PM
MICKEY'S MAINSAIL	DECK 3, FWD	5:45 PM - 11:00 PM
QUACKS	DECK 11, MID	
SEA TREASURES	DECK 3, FWD	5:45 PM - 11:00 PM
VISTA GALLERY	DECK 4, MID	5:45 PM - 10:00 PM
WHITE CAPS	DECK 3, FWD	5:45 PM - 11:00 PM
WHOZITS & WHATZITS	DECK 11, MID	9:00 AM - 10:30 AM

<b>DINNER MENU</b>	Animator's Palate - Pacific Rim	<b>DRINK OF THE DAY</b>	Yellow Bird (Alcoholic)	<b>WEATHER FORECAST</b>	Today: Partly Cloudy
	Enchanted Garden - Continental Market Cuisine		Lava Smoothie (Non-Alcoholic)		High: 80°F/27°C
	Royal Court - French Cuisine				Tomorrow: Partly Sunny
	Dining Times: 5:45 p.m. & 8:15 p.m.				High: 88°F/31°C

**Evening Attire: Cruise Casual**

## DINING & LOUNGES

BREAKFAST		
CABANAS CONTINENTAL	DECK 11, AFT	6:30 AM - 7:30 AM
CABANAS	DECK 11, AFT	7:00 AM - 11:30 AM
ROYAL COURT	DECK 3, MID	8:00 AM - 9:30 AM

LUNCH		
CABANAS	DECK 11, AFT	11:30 AM - 2:15 PM
FILMORE'S FAVORITES	DECK 11, MID	10:30 AM - 6:00 PM
LUIGI'S PIZZA	DECK 11, MID	10:30 AM - 6:00 PM
ROYAL COURT	DECK 3, MID	12:00 PM - 1:30 PM
TOW MATER'S GRILL	DECK 11, MID	10:30 AM - 11:00 PM

DINNER		
ANIMATOR'S PALATE	DECK 3, AFT	5:45 PM & 8:15 PM
ENCHANTED GARDEN	DECK 2, MID	5:45 PM & 8:15 PM
ROYAL COURT	DECK 3, MID	5:45 PM & 8:15 PM
CABANAS TABLE SERVICE	DECK 11, AFT	6:30 PM - 8:30 PM
PALO (18+) (Reservations Req. & Not For Adults)	DECK 12, AFT	6:00 PM - 8:30 PM
REMY (18+) (Reservations Req. & Not For Adults)	DECK 12, AFT	6:00 PM - 8:30 PM

LATE NIGHT SNACKS		
LA PIAZZA (18+)	DECK 4, AFT	10:45 PM - 11:45 PM
LUIGI'S PIZZA	DECK 11, MID	9:30 PM - 12:30 AM

ADDED FEATURES		
BEVERAGE STATION	DECK 11, MID	24 HOURS
EYE SCREAM	DECK 11, MID	11:00 AM - 11:00 PM
ROOM SERVICE	DIAL 0	24 HOURS

## ENTERTAINMENT - LOUNGES - BARS

Adults must be 21 and older to consume alcoholic beverages.

BON VOYAGE	DECK 3, MID	10:00 AM - 11:00 PM
COVE BAR (18+)	DECK 11, FWD	11:00 AM - 11:00 PM
COVE CAFE (18+)	DECK 11, FWD	7:00 AM - 12:00 MID
CURRENTS (18+)	DECK 13, FWD	10:00 AM - 11:00 PM
D LOUNGE	DECK 4, MID	SHOWTIMES
FROZONE TREATS	DECK 11, MID	10:00 AM - 10:00 PM
LA PIAZZA (18+ AFTER 9:00 PM)	DECK 4, AFT	3:00 PM - 12:00 MID
MERIDIAN (18+)	DECK 12, AFT	12:00 PM - 12:00 MID
O'GILLS PUB (18+ AFTER 9:00 PM)	DECK 4, AFT	2:00 PM - 12:00 MID
OQH LA LA (18+)	DECK 4, AFT	5:00 PM - 12:00 MID
OUTLOOK	DECK 14, MID	SUNSET TIMES
SKYLINE (18+)	DECK 4, AFT	5:00 PM - 12:30 AM
THE TUBE (18+ AFTER 9:00 PM)	DECK 4, AFT	9:30 PM - 2:00 AM
VISTA CAFE	DECK 4, MID	7:00 AM - 11:00 PM
WAVES	DECK 12, AFT	10:00 AM - 6:00 PM

Public Health Advisory: Consuming raw or under-cooked meats, poultry, seafood, shellfish, or eggs may increase your risk for food borne illness, especially if you have certain medical condition

## PORT ADVENTURES IMPORTANT INFORMATION

Please check your tour tickets for meeting times and locations.  
Visit the Port Adventures Desk, Deck 5, Midship, for any questions.

**All Ashore: Approx. 11:15 a.m.**  
**Last Tender: Approx. 5:00 p.m.**

<b>Ship's Agent In Grand Cayman</b> Bodden Shipping Agency, Fifth Floor, Room 508, Corning Avenue, GT Grand Cayman, Tel 345-949-6254 or 345-949-7424	<b>IMPORTANT NUMBERS</b> Fire/Security: 7-3001 Medical EMERGENCY: 7-3000 Health Center: 7-1923
--	---