

# PERSONAL NAVIGATOR

Sunrise: 6:22 a.m. Sunset: 7:18 p.m.  
Evening Attire: Formal

Today: Sunny High: 86°F/30°C  
Tomorrow: Sunny High: 80°F/27°C

SUNDAY, APRIL 27, 2014

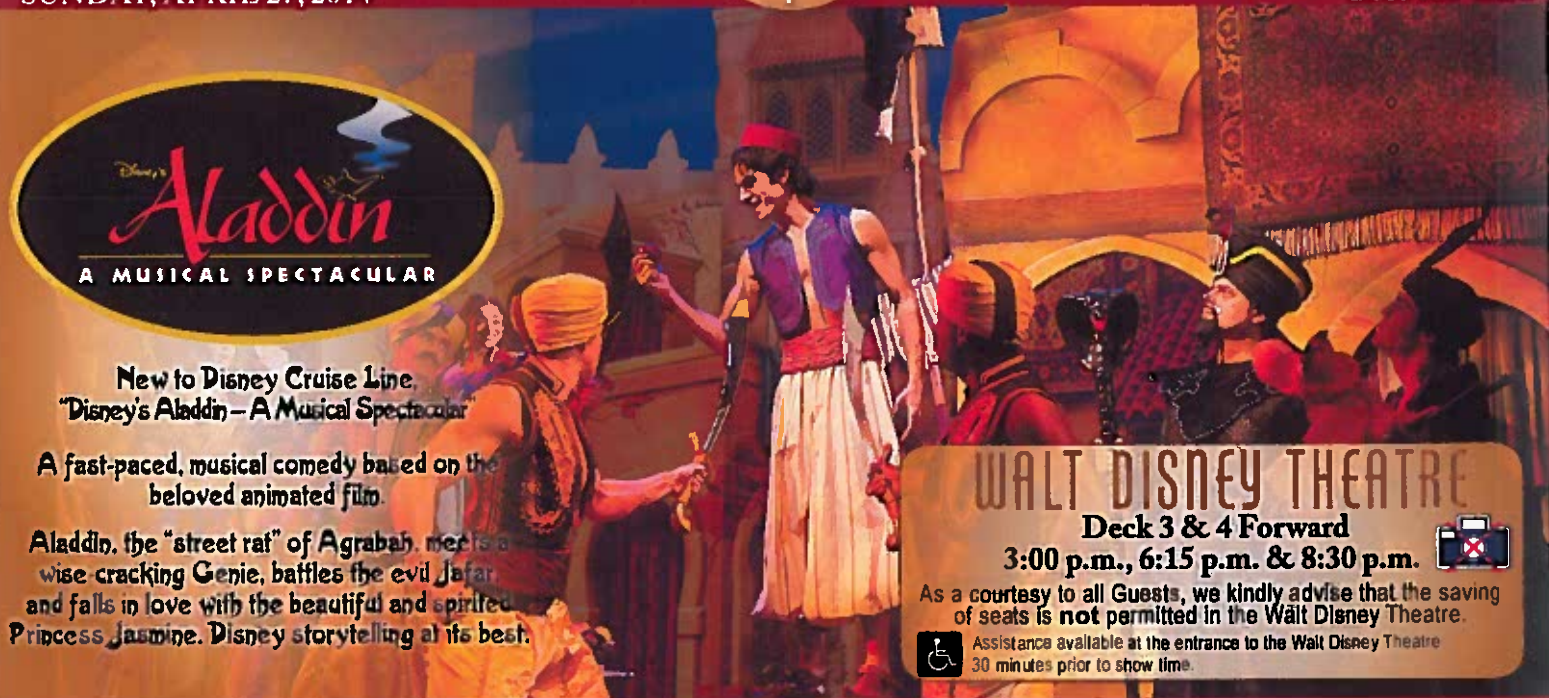
DAY AT SEA



New to Disney Cruise Line.  
"Disney's Aladdin - A Musical Spectacular"


A fast-paced, musical comedy based on the beloved animated film.

Aladdin, the "street rat" of Agrabah, meets a wise-cracking Genie, battles the evil Jafar and falls in love with the beautiful and spirited Princess Jasmine. Disney storytelling at its best.




## WALT DISNEY THEATRE

Deck 3 & 4 Forward

3:00 p.m., 6:15 p.m. & 8:30 p.m. 

As a courtesy to all Guests, we kindly advise that the saving of seats is **not** permitted in the Walt Disney Theatre.

 Assistance available at the entrance to the Walt Disney Theatre 30 minutes prior to show time.

## Disney FANTASY Fun Facts

**Tonnage:** 130,000 Gross Tons  
**Height:** 216 Feet  
**Length:** 1115 Feet

### Important Dates

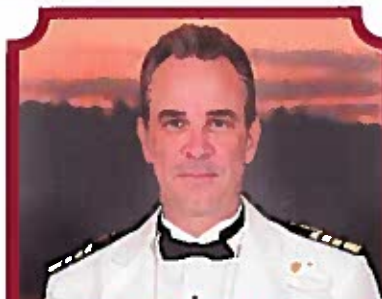
**Name Announcement:** March 10, 2009  
**Steel Cutting:** March 16, 2010  
**Keel Laying:** February 11, 2011  
**Delivery:** February 9, 2012

Almost four football fields in length, the Disney Fantasy is longer than the height of the Eiffel Tower in Paris (1,063 feet). She is also longer than the height of New York City's famous Chrysler building (1,047 feet).

### Disney Fantasy's Whistle

*Will be played after today's noon announcement*

The Disney Fantasy's whistle, a prominent element of the "Sailing Away" deck party at the start of the cruise, is quite the musical talent. It's able to perform not just the first musical line of "When You Wish Upon a Star" but also the second line of the song ("makes no difference who you are") plus several measures of "Yo Ho (A Pirate's Life for Me)," "It's a Small World," "Be Our Guest," "Hi Diddle Dee Dee (An Actor's Life for Me)" and "A Dream is a Wish."



## CAPTAIN'S RECEPTION

Enjoy live music and a cocktail while meeting some of the ship's officers.

Lobby Atrium, Deck 3, Midship,  
5:00 & 7:30 p.m.

Enjoy an exclusive photo opportunity with Captain Marco at  
5:15 & 7:30 p.m., Lobby Atrium

## Don't Miss:

### Walking Ship Tour

Meet at Preludes, Deck 3, Forward - 9:15 a.m. & 11:30 a.m.  
Enjoy the beauty of the Disney Fantasy with your Cruise Staff in this guided tour.

### Art of The Theme Show Tour (18+)

Pre-Book at Guest Services, Deck 3, Midship  
Join us on a guided ship tour and discover the key ingredients that make the Disney Fantasy cruise ship one-of-a-kind.

### Effy Jewelry Presentation

Buena Vista Theatre, Deck 4 & 5, Forward - 11:00 a.m.  
A special presentation where you'll learn about the inspiration and creation of Effy jewelry.

### Anyone Can Cook - Apple Strudel

D Lounge, Deck 4, Midship - 2:15 p.m.  
From our galley to yours. Join our chefs as they show you how to prepare delicious dishes.  
Today's Menu - Apple Strudel

### Club D Dance Party

D Lounge, Deck 4, Midship - 7:30 p.m. & 9:45 p.m.  
Join your snazzy Cruise Staff as we turn D-Lounge into an electrifying family nightclub featuring appearances from some of your favorite Disney Characters. Club D, where everyone is a V.I.P!



## TIME ZONE CHANGE

Remember to turn your clocks **BACK 1 HOUR** upon retiring on **SUNDAY** evening, or first thing **MONDAY** morning.

## DINNER MENU

Animator's Palate: Pacific Rim Cuisine  
Enchanted Garden: Continental Market Cuisine  
Royal Court: French Cuisine

## DRINK OF THE DAY

Bahama Mama (Alcoholic)  
Coco Bali (Non Alcoholic)

## IMPORTANT NUMBERS

Fire/Security: 7-3001  
Medical Emergency: 7-3000  
Health Center: 7-1923



# ADULT ACTIVITY HIGHLIGHTS

## SENSES SPA FITNESS CLASSES & SEMINARS

*Yoga* - Donald's Pool - 7:00 a.m.  
*Body Sculpt Boot Camp* (Nom. Fee) - Senses Fitness Center - 9:00 a.m.  
*Secrets to a Flatter Stomach* - Senses Spa & Salon - 11:00 a.m.  
*Introduction to Acupuncture* - Senses Fitness Center - 12:15 p.m.  
*Back Pain Solutions* - Senses Spa & Salon - 1:00 p.m.  
*Tongue & Pulse Analysis* - Senses Spa & Salon - 3:15 p.m.  
*Group Cycling* - Senses Fitness Center - 4:00 p.m.  
*Complimentary Footprint Analysis* - Senses Spa & Salon - 5:00 p.m.  
*Fitness Prenzy* (13-17, Nom. Fee) - Senses Fitness Center - 7:00 p.m.



## TASTING CLASSES

*Champagne Tasting* (21+) - Ooh La La - 12:15 p.m.  
*Stem to Stern Wine Tasting* (21+) - Ooh La La - 1:45 p.m.  
*Mixology* (21+) - Skyline - 2:00 p.m. & 4:00 p.m.  
*Martini Tasting* (21+) - Meridian - 4:00 p.m.  
*Tequila & Margarita Tasting* (21+) - Ooh La La - 4:45 p.m.  
*Whiskey Tasting* (21+) - Cove Cafe - 10:00 p.m.  
*Cognac Tasting* (21+) - Meridian - 10:30 p.m.  
 Please make reservations for tastings at Guest Services for a nominal fee.  
 Tasting Seminars are only for Guests 21 and Older.

## CLUB 18\*21 - LUNCH

*Royal Court, Deck 3, Midship - 12:15 p.m.*

## CLUB 18\*21 - MINI GOLF

*Goofy Golf, Deck 13, Aft - 4:00 p.m.*

## CLUB 18\*21 - MIXER

*The Tube, Deck 4, Aft - 10:00 p.m.*

CLUB  
18\*21



## ESPN DREAM TEAM DRAFT DAY - FOOTBALL

*O'Gills Pub, Deck 4, Aft - 11:15 a.m.*  
 Join the "Commissioner" and engage in this interactive fantasy football draft unlike anything you've ever seen! Can YOU draft the greatest football team of All-Time?

## THE QUEST

*The Tube, Deck 4, Aft - 10:15 p.m.*  
 Enjoy the wildest and wackiest scavenger team event on the seven seas!

## 70'S REMIX WITH CLUB DJ CLINT KUPER

*The Tube, Deck 4, Aft - 11:45 p.m.*  
 Join Club DJ Clint Kuper, as he takes you back and remixes 70's hits to keep you dancing.



# FUN FOR ALL AGES HIGHLIGHTS

## WAKE UP WITH DISNEY JUNIOR

*D Lounge, Deck 4, Midship - 8:30 a.m.*  
 What happens when you experience unlimited fun with your favorite Disney Junior shows? You get an exciting dance party designed especially for preschoolers ages seven and under.



## DISNEY ANIMATION: CREATING A CHARACTER

*D Lounge, Deck 4, Midship - 9:45 a.m. & 12:45 p.m.*  
 Go behind the scenes at Walt Disney Animation Studios as Walt Disney himself talks about his most famous characters, then learn the basic techniques of drawing Mickey and Donald in this fun and interesting enrichment program.



## DIAMOND JACKPOT BINGO

*D Lounge, Deck 4, Midship - 11:00 a.m.*  
 Join us for 4 cash prize games and your chance to win a Diamond Pendant! Everyone attending will also receive a voucher to collect a free Diamonds International charm bracelet! Pre Sales start 15 minutes prior to game.



## DISNEY VACATION CLUB GROUP PREVIEW

*The Tube, Deck 4, Aft - 12:00 p.m.*  
 Want to learn more about taking magical vacations year after year? Please see a Disney Vacation Club representative on Deck 4, Midship, or call 7-2805 from your stateroom phone for more information about our interactive group presentation.



## JACK-JACK'S INCREDIBLE DIAPER DASH

*Lobby Atrium, Deck 3, Midship - 12:15 p.m.*  
 Calling all baby Cruisers! It's time to take to the mat to see who's the fastest crawler of the seven seas! Register your baby 15 minutes prior to the big race.



## PORT & SHOPPING SHOW

*Buena Vista Theatre, Deck 4 & 5, Forward - 1:45 p.m.*  
 Join your Port and Shopping Guides to learn about the incredible Tax & duty free shopping ashore this cruise! Free charm bracelet for all in attendance and a raffle to win a Diamond Pendant!

## GIFT PACK JACKPOT BINGO

*D Lounge, Deck 4, Midship - 4:15 p.m.*  
 Four cash prize games and exclusive Disney Cruise Line® and EFFY prizes to be won. The jackpot continues to grow and could go at any time! Pre Sales start 15 minutes prior to game.



## PLAYHOUSE D LOUNGE

*D Lounge, Deck 4, Midship - 5:15 p.m.*  
 Calling our youngest of cruisers! Here is a special playtime that is just for you. Come meet new friends; and join in on the fun as your Cruise Staff team takes you through interactive activities made just for you!

## FAMILY SUPERSTAR KARAOKE

*D Lounge, Deck 4, Midship - 8:30 p.m. & 10:30 p.m.*  
 Join your Cruise Staff in D Lounge tonight and sing along to your favorite song - fun for everyone.



# YOUTH ACTIVITIES HIGHLIGHTS

## DINE & PLAY

A convenience for families dining at 8:15 p.m., our Youth Activities Counselors will be available at 9:15 p.m. at the entrance of Royal Court, Enchanted Garden and Animator's Palate dining rooms to bring registered children to join the fun in the Youth Activity areas.



Deck 5, Midship (7-5864) 9:00 a.m. - 11:30 p.m.

## OPEN HOUSE

8:00 a.m. - 9:00 a.m.

Your chance to see our toddler space, It's A Small World Nursery.



Deck 5, Midship (7-1440)  
(3-12 years old) 9:00 a.m. - 12:00 mid

## ALOHA LUAU

10:30 a.m.

It's party time, Hawaiian style! Come join us for a Luau experience and learn how to dance like Lilo & Stitch.

## SCAVENGER HUNT

8:15 p.m.

A little friendly competition exploring the ship; see if you can solve the clues and finish first.



Deck 5, Midship (7-1445)  
(3-12 years old) 9:00 a.m. - 1:00 a.m.

## STITCH'S ADVENTURE SQUAD

9:30 a.m.

Stitch, everyone's favorite alien, is making an appearance to share some of his mischievous games and activities.

## DISNEY ANIMATION: CREATING A CHARACTER

7:30 p.m.

Go behind the scenes at Walt Disney Animation Studios as Walt Disney himself talks about his most famous characters, then learn the basic techniques of drawing Mickey and Donald in this fun and interesting enrichment program.



Deck 13, Midship (7-9743)  
(11-14 years old) 9:00 a.m. - 1:00 a.m.

## MAGIC SHOW

11:30 a.m.

The Magnificent Magician will demonstrate to you some of the best known magic tricks on the sea.

## THAT'S HILARIOUS

9:45 p.m.

Ever wanted to show off your comedy skills? Then be a part of the cast for the crazy improv show "That's Hilarious" and put on a live show for your friends.



Entrance on Deck 4, Forward (7-9418)  
(14-17 years old) 9:00 a.m. - 2:00 a.m.

## ZOMBIFIED

1:15 p.m.

A big movie producer is looking for zombies to help him film the finale to his latest masterpiece, Zombified.

## GENDER WARS

10:15 p.m.

Join us as we find out who really are the king or queen of the castle.

# BUENA VISTA THEATRE

Deck 4 & 5, Midship  
Today's Movies



8:00 a.m.  
Duration: 1 hr 48 mins  
Rating: PG



3:30 p.m.  
Duration: 1 hr 25 mins  
Rating: G

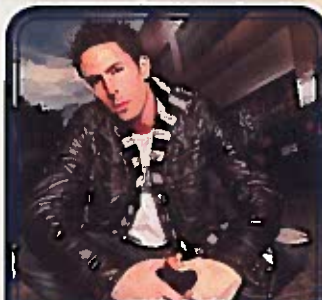
DOLBY 3D



5:30 p.m. & 8:15 p.m.  
Duration: 1 hr 48 mins  
Rating: PG



10:30 p.m.  
Duration: 2 hrs 29 mins  
Rating: PG-13



## FAMILY VARIETY ACT

Featuring the Magic & Mind Reading of Wayne Hoffman, as he entertains the entire family in this fun-filled show.

*The Tube,  
Deck 4, Aft,  
7:30 p.m.*



## ADULT VARIETY ACT

Featuring the Comedy & Music of John Charles, as he entertains you in this adult exclusive show.

*Walt Disney Theatre (18+),  
Deck 3 & 4, Forward,  
11:00 p.m.  
(Doors Open At 10:45 p.m.)*

## YOUTH ACTIVITIES OPEN HOUSE

Open House is an opportunity for all to come and participate in a variety of exciting activities and free time in the Oceaneer Club, Oceaneer Lab, It's A Small World Nursery, Vibe and Edge throughout the cruise. During these times secured programming will still be offered in the other venue for those looking to check their children into care.

Vibe: 9:00 a.m. - 10:30 a.m. & 6:30 p.m. - 8:30 p.m.  
Edge: 9:00 a.m. - 10:00 a.m. & 5:00 p.m. - 6:30 p.m.  
Disney's Oceaneer Club: 9:00 a.m. - 10:00 a.m.



# MORE TO ENJOY WHILE ONBOARD

## PLAN YOUR NEXT GETAWAY NOW

Our 3 and 4 night Bahamian Cruises are a perfect way to get an instant tropical recharge! Departing from Miami or Port Canaveral, most Bahamian cruises include a stop at Disney's private island, Castaway Cay. Visit the Onboard Sales Desk today and ask about our special onboard booking offer.

## PORT AND SHOPPING INFORMATION

Learn about the incredible shopping in the Caribbean at the Port and Shopping Show at 1:45 p.m. in the Buena Vista Theatre, Deck 4 Midship. Everything will be covered from Diamonds to T-Shirts, Watches to Tanzanite. A free Charm Bracelet and a chance to win a Diamond Pendant for all in attendance! The first 100 Guests in will receive a Ship Charm. Don't miss the Fine Watch Seminar at 4:15 p.m. La Piazza Deck 4 Aft.

## DISNEY VACATION CLUB® GROUP PREVIEW

Want to learn more about taking magical vacations year after year? Please see a Disney Vacation Club representative on Deck 4, Midship, or call 7-2805 from your stateroom phone for more information about our interactive group presentation.



## ONBOARD AIRLINE CHECK IN

If you would like to have your boarding passes printed for you onboard and have your luggage taken to the airport for you, register before Wednesday. If you have a Disney Cruise Line airport transfer to Orlando International Airport and fly with one of the participating airlines, stop at Guest Services, Deck 3, Midship to register.

## ARR-CADE

Where can you be a ninja, play the guitar like a rock star, race a car down the streets of Tokyo and along the way WIN some great prizes? Arr-CADE located Deck 11, Aft where the pirates play.

## runDisney® CASTAWAY CAY 5K REGISTRATION (10+)

Sign up today for the runDisney: Castaway Cay 5K! Please visit the Port Adventures Desk or the Guest Services Desk to register at anytime prior to our arrival at Disney's Castaway Cay. Please note that runners must be 10 years of age or older to participate.



## MIDSHIP DETECTIVE AGENCY

The puppies from 101 Dalmatians have gone missing! Use your special detective "badge" to track down the puppies and catch the villain who took them. Decks 2 & 5, Midship.



Limited spaces are available for our most popular tours, so visit the Port Adventures Desk today to reserve your place. Why not explore the Chacchoben Mayan Ruins in Costa Maya, an awe-inspiring reminder of this fascinating civilization. For the families, we offer Dolphin experiences in Grand Cayman, Costa Maya and Cozumel, so why not let this cruise be the time to enjoy this once in a lifetime experience.

## SHOPPING

### FRAGRANCE OF THE DAY

Stop by White Caps to test our selected fragrance today! Deck 3, Forward.

### STYLISH EFFY JEWELRY

Head to the Buena Vista Theatre, Deck 4 Forward, at 11:00 a.m. for a special presentation where you'll learn about the inspiration and creation of Effy jewelry. Later, don't miss an opportunity for a chance to win a pair of Effy Tanzanite stud earrings at this afternoon's bingo at 4:15 p.m. with card sales beginning at 4:00 p.m. in D Lounge, Deck 4 Midship.

### ROYAL COURT ROYAL TEA

Hear ye, hear ye! Princes and Princesses are welcomed to join some of your favorite Disney Princesses at the Royal Court Royal Tea for an afternoon filled with music, fun, and delicious goodies! Stop by the Guest Services Desk, Deck 3, Midship, to register and to learn more about this royal event. Reservations required. Fee will apply. Limited space available.

### BIBBIDI BOBBIDI BOUTIQUE

Young Princesses and Princes can get ready for a formal evening with a makeover at the Bibbidi Bobbidi Boutique. Make your reservations by visiting Bibbidi Bobbidi Boutique, Deck 5, Midship or dialing extension 7-9438. Limited space available.

### HIDDEN CHARACTERS IN THOMAS KINKADE ART!

Known as the "Painter of Light," Thomas Kinkade is one Disney's most celebrated artists having created an array of enchanting artwork. Stop by the Vista Gallery today to view his unique collection of paintings featuring some of your favorite Disney characters! Also, take the time to try and find all of the hidden Disney characters scattered throughout his paintings. Are you up to the challenge? Deck 4, Midship.



**SENSES**  
SPA & SALON

## SPA SPECIAL

### IONITHERMY

Would you like to lose between 1 – 8 inches?  
Speed up your metabolism?  
Firm your muscle tone?  
Improve appearance of cellulite?  
If so, then Ionithermy is the best treatment for you!  
50 min. \$155

## FINE JEWELRY COLLECTIONS BY EFFY

Deck 3, Forward

Visit White Caps and discover the fine jewelry collections by Effy. With designs inspired by global trends and famous for their use of vibrant colored gemstones, the stylish and bold pieces by Effy allows you to create a look that's all your own. Deck 3, Forward.



## Shutters FORMAL PORTRAITS TONIGHT!

Now that the family is dressed up and ready to enjoy the evening, capture the memories in your formal attire by visiting our professional portrait studios located in the Lobby Atrium, Deck 3, Midship.

5:00 p.m. - 6:00 p.m.  
7:15 p.m. - 8:30 p.m.  
9:30 p.m. - 10:30 p.m.

*\*Please note that photos are available for viewing on our interactive photo kiosks approximately five hours after being taken and are only available for purchase during this cruise.*

DPC110 04 27 2014 ©DISNEY

## IMPORTANT INFORMATION

### Security Notice

All Guests (including children) who wish to disembark the ship are required to present their Key to the World card at the gangway. A photo ID is also required for those Guests who are 18 years of age or older. Guests under the age of 18 are required to have a parent, guardian or other responsible adult sign an authorization form at the Guest Service Desk if they wish to go ashore unaccompanied or with any adult from another stateroom.

### Sunscreen/Insect Repellent Advisory

Use sunscreen first and protect against mosquito borne illnesses by applying insect repellent on top of sunscreen when going ashore.

### Cold and Flu Reminder

Please wash hands frequently and thoroughly, particularly before meals. Contact the Health Center by dialing 7-1923, should anyone in your party become ill.

### Corridor Quiet Hours

As a courtesy to all our Guests, please recognize quiet hallway hours from 10:00 p.m. til 8:00 a.m.

### Inclément Weather

For the safety of all Guests, outdoor events may be changed due to unforeseen weather conditions.

### Environmental Message

With Disney's commitment to the Environment, please refrain from throwing anything over the Ship's side. Thank you!

### No Reserved Seats Policy

As a courtesy to all our Guests, we kindly advise that the saving of seats is not permitted in the Walt Disney Theatre, and the saving of the sun loungers is not permitted on Deck 11, 12, and 13. Items left unattended will be returned to lost and found at Guest Services, Deck 3 Midship.

### Smoking

For the comfort of our guests, the following areas are designated as smoking areas:  
• Deck 13, forward, port side by Currents  
• Deck 12, aft, port side outdoor area that is accessible through the Meridian Lounge  
• Deck 4, aft, port side from 6:00 p.m. to 6:00 a.m. only (all of Deck 4 is non-smoking from 6:00 a.m. to 6:00 p.m.) Smoking is prohibited inside all guest staterooms and on stateroom verandahs. Guest found smoking in their staterooms or on their verandahs will be charged a \$250 stateroom recovery fee.

### Walt Disney Theatre

Theatrical performances may use artificial fog, strobe lights, pyrotechnics and other special effects. For the safety of our performers and the comfort of those around you, the use of any photography, video recording device or any electronic equipment is prohibited.

### Verandah Safety

Please do not leave any combustible materials on your balcony when not present in your stateroom for safety reasons.



Morning	8:30	8:45	9:00	9:15	9:30	9:45	10:00	10:15	10:30	10:45	11:00	11:15	11:30	11:45	12:00	12:15	12:30	12:45	1:00	1:15	1:30
FUNNEL VISION	A Goofy Movie (G) Funnel Vision						Aladdin (G) Funnel Vision						Disney Movie Challenge Poolside Funnel Vision								
BUENA VISTA THEATRE	Frozen (PG) Duration: 1 Hour 48 Minutes < Starts at 8:00 a.m.												Effy Jewelry Presentation								
CHARACTERS	Daisy Dk 4, Balcony			Princess Gathering Lobby Atrium			Minnie Dk 4, Balcony			Sofia Dk 4, Balcony			Stitch Dk 4, Balcony			Chip & Dale Dk 4, Balcony					
FUN FOR ALL AGES	Disney Junior D Lounge		Walking Ship Tour Meet at Preludes			Crafts: 3D Crafts La Piazza			Bingo Pre Sales			Diamond Jackpot BINGO D Lounge			Crafts: Door Hangers La Piazza			Disney Animation Creating a Character D Lounge			
	Open House Toddler Time It's A Small World Nursery < Starts at 8:00 a.m.		International Service Outdoor			Toddler Time Goofy's Sports Deck															
ADULTS	Friends of Bill W. Outdoor		Xbox Kinect™ - Workout Challenge O'Gills Pub			Crafts - Tile Coasters O'Gills Pub			Effy Jewelry Presentation Buena Vista Theatre			Club 18*21 Lunch Royal Court									
			Boot Camp (Nom. Fee) Senses Fitness Center			Art of The Theme Show Tour Pre-Book at Guest Services			ESPN Dream Team Draft Day - Football O'Gills Pub			Singles Lunch Royal Court			NBA Playoffs O'Gills Pub (Subject to Satellite Availability)						
VIBE 14-17 YEARS OLD	Youth Activities Open House						Coffee Break			Sun Deck Fun						Zombified					
EDGE 11-14 YEARS OLD	Youth Activities Open House						Game Challenge			Animation Cells			Magic Show			A to Z Scavenger Hunt					
OCEANEER LAB 3-11 YEARS OLD				Craft Corner			Human Bingo			GAGA Ball						Bingo					
				Stitch's Adventure Squad			Super Sloppy Science			Wii Challenge											
OCEANEER CLUB 3-12 YEARS OLD	Open House and Registration									Craft Corner			Lunch								
	Mickey's Puzzle Palace			Memory Wall			Aloha Luau			Magic PlayFloor						Tinker Bell's Talent Show					

Afternoon	1:45	2:00	2:15	2:30	2:45	3:00	3:15	3:30	3:45	4:00	4:15	4:30	4:45	5:00	5:15	5:30	5:45	6:00	6:15	6:30	6:45		
FUNNEL VISION							The Hunchback of Notre Dame (G) Funnel Vision						The Princess Diaries (PG) Funnel Vision										
BUENA VISTA THEATRE	Port & Shopping Show						Disney Nature: Bears (G) Duration: 1 Hour 25 Minutes						Frozen (PG) <b>DOLBY 3D</b> Duration: 1 Hour 48 Minutes										
CHARACTERS	Mickey Dk 4, Balcony		Minnie Dk 4, Balcony				Minnie Preludes		Daisy Preludes		Goofy Preludes		Mickey Dk 4, Balcony		Donald Dk 4, Balcony								
FUN FOR ALL AGES	Port & Shopping Show Buena Vista Theatre		Any One Can Cook D Lounge - Apple Strudel			Aladdin A MUSICAL THEATRICAL Walt Disney Theatre			Bingo Pre Sales			Gift Pack Jackpot BINGO D Lounge			Captain's Welcome Reception Lobby Atrium			Live Music with Fine Whines Lobby Atrium			Aladdin A MUSICAL THEATRICAL Walt Disney Theatre		
	Crafts: Paper Plane Making La Piazza		Mickey 200 The Tube (Limited Availability)			Disney Tunes Trivia La Piazza						Playhouse D Lounge D Lounge											
ADULTS	Wine Tasting (21+) Ooh La La					Tongue & Pulse Analysis Senses Spa & Salon			Watch Seminar La Piazza			Footprint Analysis Senses Spa & Salon											
	NBA Playoffs O'Gills Pub (Subject to Satellite Availability)								Club 18*21 - Mini Golf Goofy Golf			Tequila & Margarita Tasting (21+) Ooh La La											
VIBE 14-17 YEARS OLD	Zombified						Dive into DJ'ing			Football Tournament			Guitar Hero Challenge			Open House							
EDGE 11-14 YEARS OLD	Flubber						Brains and Brawns			Sports Deck Fun			Youth Activities Open House			Wii Challenge							
OCEANEER LAB 3-11 YEARS OLD				Relay Games									GAGA Ball			Craft Corner							
	Anyone Can Cook			Game Challenge			Get the Hook									Magic PlayFloor							
OCEANEER CLUB 3-12 YEARS OLD	Parachute Games						Game Challenge			Dinner						Craft Corner							
	Cruisin' with Crush			Relay Games			Toy Story Boot Camp			Picture This						Wii Challenge							

Evening	7:00	7:15	7:30	7:45	8:00	8:15	8:30	8:45	9:00	9:15	9:30	9:45	10:00	10:15	10:30	10:45	11:00	11:15	11:30	11:45	12:00	
FUNNEL VISION							Bolt (PG) Funnel Vision						The Avengers (PG-13) Funnel Vision									
BUENA VISTA THEATRE							Frozen (PG) <b>DOLBY 3D</b> Duration: 1 Hour 48 Minutes						The Lone Ranger (PG-13) Duration: 2 Hours 29 Minutes									
CHARACTERS	Cinderella Preludes		Ariel Preludes		Donald Dk 4, Balcony		Minnie Preludes		Mickey Dk 4, Balcony		Minnie Dk 4, Balcony											
FUN FOR ALL AGES	Family Dance Party The Tube		Captain's Welcome Reception Lobby Atrium			Aladdin A MUSICAL THEATRICAL Walt Disney Theatre			Club D Dance Party D Lounge			Family Superstar Karaoke D Lounge										
	Club D Dance Party D Lounge		Variety: Wayne Hoffman The Tube			Family Superstar Karaoke D Lounge			Live Music with Fine Whines Lobby Atrium			Live Piano with Michael Godwin Lobby Atrium										
ADULTS			Live Guitar with David Kenny O'Gills Pub						DJ Requests The Tube			The Quest The Tube			The Music & Comedy of <b>JOHN CHARLES</b> Walt Disney Theatre			70's Remix with Club DJ Clint Kuper The Tube				
VIBE 14-17 YEARS OLD	Youth Activities Open House						Pump It Up						Gender Wars			Mirror, Mirror						
EDGE 11-14 YEARS OLD	Wii Challenge		Four Square		GAGA Ball		Tween Choice			That's Hilarious			Gender Wars			Mirror, Mirror						
OCEANEER LAB 3-11 YEARS OLD	Craft Corner		Bingo		Disney Cruise Line Trivia						Glow Jam			Four Square								
			Disney Animation: Creating a Character			Pathfinders			Detective School			Magic PlayFloor										
OCEANEER CLUB 3-12 YEARS OLD	Craft Corner		Scavenger Hunt			Game Challenge																
			Once Upon a Time Craft Corner						Magic PlayFloor			Movie Time										

Symbol for activities that will be repeated during the cruise  
 Youth Activities Open House  
 Fold along the dotted lines and take me with you so you don't miss any of the fun!  
 IN THE SPOTLIGHT SERIES  
 JUMP UP! SERIES  
 CREATE A WERTHER SERIES  
 CLUBHOUSE SERIES  
 STORYBOOK SERIES



# BUENA VISTA THEATRE

Deck 4 & 5, Midship

**DOLBY 3D**



8:00 a.m.  
Duration:  
1 hr 48 mins  
Rating: PG



3:30 p.m.  
Duration:  
1 hr 25 mins  
Rating: G



5:30 & 8:15 p.m.  
Duration:  
1 hr 48 mins  
Rating: PG



10:30 p.m.  
Duration:  
2 hrs 29 mins  
Rating: PG-13

## Character Appearances

**DAISY DUCK**  
Deck 4, Balcony - 9:15 a.m.  
Preludes - 4:45 p.m.

**PRINCESS GATHERING**  
Lobby Atrium - 10:00 a.m.

**PRINCESS SOFIA**  
Deck 4, Balcony  
10:15 a.m. & 11:30 a.m.

**PRINCESS MINNIE**  
Deck 4, Balcony - 11:00 a.m.

**STITCH**  
Deck 4, Balcony - 12:45 p.m.

**BUZZ LIGHTYEAR**  
Lobby Atrium (V)  
12:45 p.m. & 1:45 p.m.

**WOODY**  
Lobby Atrium (V)  
1:15 p.m. & 2:15 p.m.

**CHIP & DALE**  
Deck 4, Balcony  
1:15 p.m. & 4:30 p.m.

**MICKEY MOUSE**  
Deck 4, Balcony  
1:45 p.m., 2:45 p.m., 5:30 p.m.,  
7:45 p.m. & 9:45 p.m.

**MINNIE MOUSE**  
Deck 4, Balcony  
2:15 p.m., 5:00 p.m.,  
7:15 p.m. & 10:15 p.m.  
Preludes  
4:15 p.m., 5:45 p.m.  
& 9:30 p.m.

**GOOFLY**  
Preludes - 5:15 p.m.

**DONALD DUCK**  
Deck 4, Balcony  
6:00 p.m. & 8:15 p.m.

**CINDERELLA**  
Preludes - 7:15 p.m.

**ARIEL**  
Preludes - 7:45 p.m.

(H) Hallway - (S) Starboard Side - (P) Port Side - (V) Vestibule

For details of daily Disney character appearances, refer to the character line on your Navigator Grid, or the digital character board in the Lobby Atrium.

## YOUTH ACTIVITIES THEMED EXPERIENCES

**CLUBHOUSE SERIES**  
focuses on movement and features content which appeals to younger children.

**JUMP UP! SERIES**  
includes large group games & movement-oriented activities.

**IN THE SPOTLIGHT SERIES**  
focuses on children's stage presence with lots of activities and enthusiasm.

**STORYBOOK SERIES**  
is designed with a strong connection to the Disney classic stories.

**CREATE & INVENT SERIES**  
will have a tactile focus allowing children to create and admire their work.

**SOLVE IT! SERIES**  
are less active, but will challenge children with problem/solutions-based activities.

### YOUTH ACTIVITIES OPEN HOUSE

A non-secured program with activities for families, adults and children of all ages to enjoy together.

## SHIP DIRECTORY

### YOUTH ACTIVITIES

DISNEY'S OCEANEER CLUB	DECK 5, MID	9:00 AM - 12:00 MID
DISNEY'S OCEANEER LAB	DECK 5, MID	9:00 AM - 1:00 AM
EDGE	DECK 13, MID	9:00 AM - 1:00 AM
VIBE	DECK 4, FWD	9:00 AM - 2:00 AM
IT'S A SMALL WORLD NURSERY	DECK 5, MID	9:00 AM - 11:30 PM

### POOLS & MORE

\*Children under 12 must have adult supervision in pool areas.

AQUADUCK	DECK 12, MID	9:00 AM - 11:00 PM
AQUALAB	DECK 12, AFT	10:00 AM - 6:00 PM
DONALD'S POOL	DECK 11, MID	9:00 AM - 6:00 PM 8:00 PM - 10:00 PM
MICKEY'S POOL	DECK 11, MID	6:00 AM - 11:30 PM
MICKEY'S SLIDE	DECK 11, MID	9:00 AM - 6:00 PM
NEMO'S REEF	DECK 11, MID	9:00 AM - 6:00 PM
QUIET COVE POOL (18+)	DECK 11, FWD	6:00 AM - 12:00 MID
SATELLITE FALLS	DECK 13, FWD	6:00 AM - 8:00 PM

### RECREATION

GOLF/SPORTS SIMULATORS	DECK 13, AFT	9:00 AM - 6:00 PM
GOOFLY GOLF	DECK 13, AFT	8:00 AM - 10:00 PM
GOOFLY'S SPORTS DECK	DECK 13, AFT	8:00 AM - 6:00 PM
MIDSHIP DETECTIVE AGENCY	DECKS 2 & 5, MID	9:00 AM - 9:00 PM
PORT ADVENTURES DESK	DECK 5, MID	9:00 AM - 5:00 PM 7:00 PM - 8:30 PM
SENSSES FITNESS CENTER (18+)	DECK 11, FWD	6:30 AM - 10:00 PM

### GENERAL INFORMATION

ARR-CADE	DECK 11, AFT	24 HOURS
DISNEY VACATION CLUB	DECK 4, MID	9:00 AM - 11:30 AM 2:30 PM - 10:00 PM
GUEST SERVICES	DECK 3, MID	24 HOURS
MEDICAL HEALTH CENTER	DECK 1, FWD	9:30 AM - 11:00 AM 4:30 PM - 7:00 PM
ONBOARD SALES DESK	DECK 4, MID	10:00 AM - 12:00 PM 2:00 PM - 6:00 PM 7:30 PM - 8:30 PM
PORT & SHOPPING DESK	DECK 4, MID	7:30 PM - 8:30 PM
PRELUDES	DECK 3, FWD	2:30 PM - 3:15 PM 5:45 PM - 6:30 PM 8:00 PM - 8:45 PM
SENSSES SPA AND SALON	DECK 11, FWD	8:00 AM - 10:00 PM
SHUTTERS PHOTO GALLERY	DECK 4, MID	9:30 AM - 12:00 PM 7:00 PM - 11:00 PM
SHUTTERS DIGITAL	DECK 4, MID	24 HOURS

### SHOPPING

BIBBIDI BOBBIDI BOUTIQUE	DECK 5, MID	9:00 AM - 9:00 PM
MICKEY'S MAINSAIL	DECK 3, FWD	9:30 AM - 11:00 PM
QUACKS	DECK 11, MID	10:00 AM - 4:00 PM
SEA TREASURES	DECK 3, FWD	9:30 AM - 11:00 PM
VISTA GALLERY	DECK 4, MID	10:00 AM - 10:00 PM
WHITE CAPS	DECK 3, FWD	9:30 AM - 11:00 PM
WHOZITS & WHATZITS	DECK 11, MID	10:00 AM - 4:00 PM

<b>DINNER MENU</b>	Animator's Palate Pacific Rim Cuisine	<b>DRINK OF THE DAY</b>	Bahama Mamas (Alcoholic)	<b>WEATHER FORECAST</b>	Tuesday, 5:00pm - 11:00pm
	Enchanted Garden Continental Vicer Cuisine		Coco Rab (Non-Alcoholic)		High: 89°/70° Tomorrow: Sunny High: 80°/72°
	Royal Court French Cuisine				
	During Times 5:45 pm - 8:15 pm				

Evening Attire: Formal

## DINING & LOUNGES

### BRACEFAST

CABANAS CONTINENTAL	DECK 11, AFT	7:00 AM - 7:30 AM
CABANAS	DECK 11, AFT	7:30 AM - 11:30 AM
ROYAL COURT	DECK 3, MID	8:00 AM - 9:30 AM

### LUNCH

CABANAS	DECK 11, AFT	11:30 AM - 2:00 PM
FILMORE'S FAVORITES	DECK 11, MID	11:00 AM - 6:00 PM
LUIGI'S PIZZA	DECK 11, MID	11:00 AM - 6:00 PM
ROYAL COURT	DECK 3, MID	12:00 PM - 1:30 PM
TOW MATER'S GRILL	DECK 11, MID	11:00 AM - 11:00 PM

### DINNER

ANIMATOR'S PALATE	DECK 3, AFT	5:45 PM & 8:15 PM
ENCHANTED GARDEN	DECK 2, MID	5:45 PM & 8:15 PM
ROYAL COURT	DECK 3, MID	5:45 PM & 8:15 PM
CABANAS TABLE SERVICE	DECK 11, AFT	6:30 PM - 8:30 PM
PALO (18+) (Reservations Req. & Now For Arrival)	DECK 12, AFT	6:00 PM - 8:30 PM
REMY (18+) (Reservations Req. & Now For Arrival)	DECK 12, AFT	6:00 PM - 8:30 PM

### LATE NIGHT SNACKS

LA PIAZZA (18+)	DECK 4, AFT	10:45 PM - 11:45 PM
LUIGI'S PIZZA	DECK 11, MID	9:30 PM - 12:30 AM

### ADDED FEATURES

BEVERAGE STATION	DECK 11, MID	24 HOURS
EYE SCREAM	DECK 11, MID	11:00 AM - 11:00 PM
ROOM SERVICE	DIAL 0	24 HOURS

### ENTERTAINMENT - LOUNGES - BARS

Adults must be 21 and older to consume alcoholic beverages.

BON VOYAGE	DECK 3, MID	9:00 AM - 11:30 PM
COVE BAR (18+)	DECK 11, FWD	10:00 AM - 11:00 PM
COVE CAFE (18+)	DECK 11, FWD	7:00 AM - 12:00 MID
CURRENTS (18+)	DECK 13, FWD	10:00 AM - 11:00 PM
D LOUNGE	DECK 4, MID	SHOWTIMES
FROZZONE TREATS	DECK 11, MID	10:00 AM - 10:30 PM
LA PIAZZA (18+ AFTER 9:00 P.M.)	DECK 4, AFT	12:00 PM - 12:00 MID
MERIDIAN (18+)	DECK 12, AFT	10:00 AM - 12:00 MID
O'GILLS PUB (18+ AFTER 9:00 P.M.)	DECK 4, AFT	12:00 PM - 12:00 MID
OOH LA LA (18+)	DECK 4, AFT	5:30 PM - 12:00 MID
OUTLOOK	DECK 14, MID	SUNSET TIMES
SKYLINE (18+)	DECK 4, AFT	5:30 PM - 12:30 PM
THE TUBE (18+ AFTER 9:00 P.M.)	DECK 4, AFT	9:30 PM - 2:00 AM
VISTA CAFE	DECK 4, MID	7:00 AM - 10:30 PM
WAVES	DECK 12, AFT	10:00 AM - 6:00 PM

Public Health Advisory: Consuming raw or under-cooked meats, poultry, seafood, shellfish, or eggs may increase your risk for food borne illness, especially if you have certain medical conditions.



## TIME ZONE CHANGE

Remember to turn your clocks **BACK 1 HOUR** upon retiring on **SUNDAY** evening, or first thing **MONDAY** morning.

### IMPORTANT NUMBERS

Fire/Security:	7-3001
Medical Emergency:	7-3000
Health Center:	7-1923