

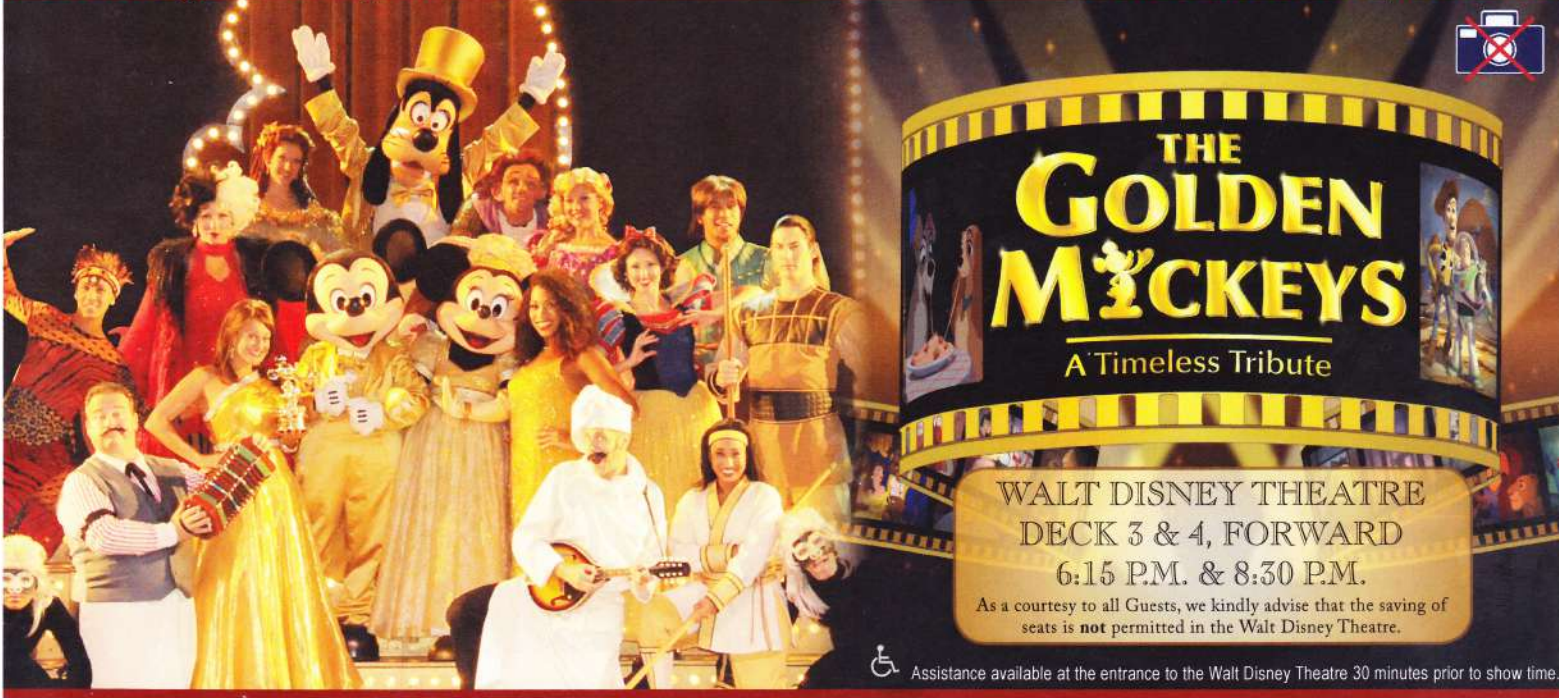
PERSONAL NAVIGATOR

SUNDAY, JANUARY 5, 2014

Sunrise: 7:14 a.m. Sunset: 5:42 p.m.
Evening Attire: Cruise Casual
All Aboard: 3:45 p.m.

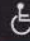
Sunday: Partly Sunny High: 73°F/23°C
Monday: Partly Sunny High: 77°F/25°C

PORT CANAVERAL, FLORIDA



WALT DISNEY THEATRE
DECK 3 & 4, FORWARD
6:15 P.M. & 8:30 P.M.

As a courtesy to all Guests, we kindly advise that the saving of seats is **not** permitted in the Walt Disney Theatre.

 Assistance available at the entrance to the Walt Disney Theatre 30 minutes prior to show time.

Welcome Aboard!

Your Stateroom & Luggage

Staterooms will be ready at 1:30 p.m. Stateroom hosts will deliver luggage throughout the day until 5:30 p.m.

Staterooms with Bunk Beds

Bunk beds are recessed into the ceiling and will be prepared during evening turndown service by your Stateroom Host/ess.

Stateroom Safe

Each stateroom is equipped with a secured storage safe. Instructions for use are located on the safe.

To Change Dining Assignment

Requests for a different seating will be taken today:

- 1:00 p.m. - 3:30 p.m.; Book in Royal Palace
- 3:30 p.m. - 4:30 p.m.; Please call 7-1831, 7-1832, or 7-1833

Remy & Palo Dining Reservations for Brunch & Dinner

Bookings will be taken on a first come basis today at:

- 1:00 p.m. - 3:30 p.m., Palo; Book in Royal Palace
- 1:00 p.m. - 3:30 p.m., Remy; Book in Royal Palace

Reservations required & cover charge applicable.


Please dial 7-9734, or 7-9735 for more information.

Openings still available for tonight!

Dinner

Please check your dining tickets for details of your dining rotation, and bring them to your specific dining location. There is no need to wait in line prior to dinner. Dining Rooms open at designated seating times and your table is reserved each night of your cruise.

- 5:45 p.m. - First seating
- 8:15 p.m. - Second seating



It's time to go Sailing Away!
Join Mickey and Minnie, along with Tinker Bell and the rest of the gang, as they welcome you aboard the Disney Dream.

4:30 p.m.
Deck Stage,
Deck 11, Midship

Don't Miss:

Walking Ship Tour

Meet at Preludes, Deck 3, Forward - 1:00 p.m. & 2:00 p.m.
(El tour del barco en Español sale a la 1:30 p.m. desde Preludes, Piso 3, Forward)

Enjoy the beauty of the Disney Dream with your Cruise Staff in this guided tour.

Family Dance Party

Evolution, Deck 4, Aft - 7:30 p.m.

Bring the whole family and dance your cares away to some of your favorite hits!

Match Your Mate (18+)

Evolution, Deck 4, Aft - 10:30 p.m.

It's time to play everyone's favorite couples game show, Match Your Mate!

Family Superstar Karaoke

D Lounge, Deck 4, Midship - 10:45 p.m.

Join your Cruise Staff in D Lounge tonight and sing along to your favorite song - fun for everyone.



GET THE PICTURE!

Visit Shutters today and ask your friendly Shutters staff about the GET THE PICTURE! Unlimited digital package which includes all your stateroom photos on one photo disc. For best value, upgrade to include all printed photos, too! Visit Shutters on Deck 4 Midship for more information. Don't wait until the last day. Beat the rush and order yours now! Terms and conditions apply.

DINNER MENU

Animator's Palate: Pacific Rim Cuisine
Enchanted Garden: Continental Market
Royal Palace: French Dinner

DRINK OF THE DAY

Paradise Cocktail (Alcoholic)
Espresso Chiller (Non Alcoholic)

IMPORTANT NUMBERS

Fire/Security: 7-3001
Medical Emergency: 7-3000
Health Center: 7-1923

FUN FOR ALL AGES HIGHLIGHTS



FAMILY FUSION

D Lounge, Deck 4, Midship - 9:45 p.m.

Bring the entire family and test your Disney knowledge in the high-tech interactive game show, Family Fusion.



CLUB NEW YEAR'S EVE

D Lounge, Deck 4, Midship - 10:15 p.m.

"The party don't start, till you walk in." Club New Year's Eve, you won't want to miss this journey of musical genres in history and performances by some of your favorite Cruise Staff. Bring your family and help us count down to a brand new year!

RUNDISNEY: CASTAWAY CAY 5K (12+)

Sign up today for the runDisney: Castaway Cay 5K! Please visit the Port Adventures Desk or the Guest Services Desk to register at anytime prior to our arrival at Disney's Castaway Cay. Please note that runners must be 12 years of age or older to participate.

CRUISE HIGHLIGHTS

Sunday
PORT CANAVERAL
Port Departure: 4:45 pm
All Aboard: 3:45 pm
Attire: Cruise Casual

THE GOLDEN MICKEYS
Walt Disney Theatre
 6:15 p.m. & 8:30 p.m.

Monday
NASSAU
All Ashore: 9:30 am
All Aboard: 5:45 pm
Attire: Optional Dress Up

VILLAINS TONIGHT!
Walt Disney Theatre
 6:15 p.m. & 8:30 p.m.

Tuesday
DISNEY'S CASTAWAY CAY
All Ashore: 8:30 am
All Aboard: 5:00 pm
Attire: Pirate or Cruise Casual

SHOWTIME:
TAYLOR MASON
Walt Disney Theatre
 6:15 p.m. & 8:30 p.m.

Wednesday
DAY AT SEA
Attire: Cruise Casual

DISNEY'S BELIEVE
Walt Disney Theatre
 6:15 p.m. & 8:30 p.m.

Subject to change.



ADULT ACTIVITY HIGHLIGHTS



FITNESS CLASSES

Senses Spa and Salon has a variety of seminars and fitness classes available throughout the cruise.

Spa Tours - Senses Spa & Salon, 12:00 p.m. - 4:00 p.m.

Spa Raffle - Senses Spa & Salon, 3:00 p.m.

Complimentary Foot Print Analysis - Senses Fitness Center, 4:30 p.m.

BEVERAGE SEMINARS

Your Beverage team has a host of tastings and seminars to entertain and educate you. Stop by Guest Services, Deck 3, Midship to pre-book these experiences (nominal fee applies). Tasting Seminars are only for Guests 21 and Older.

Whiskey Tasting - Wine Tasting - Martini Tasting
 Cognac Tasting - Tequila & Margarita Tasting - Mixology

Whiskey Tasting (21+) - Meridian (Pre Book, Nom. Fee) - 10:00 p.m.



CLUB 18*21 - ICE BREAKER

Evolution, Deck 4, Aft - 10:00 p.m.

Club 18*21 is an exclusive gathering for young adult Guests. Come meet fellow cruisers and learn about the great activities Disney has to offer to help create the perfect cruise experience.

70'S MUSIC TRIVIA

687 Pub, Deck 4, Aft - 7:30 p.m.

Let's step back in time and visit Studio 54 as we test your 70's music knowledge.

REWIND FEATURING GUEST DJ RANDY

Evolution, Deck 4, Aft - 11:15 p.m.

Join your Club Host and the Cruise Staff as our Guest DJ Randy plays amazing mixes of your favorite 70's and 80's tunes - it'll be like being back in college again!

FEATURED VARIETY ACT THIS VOYAGE



THE COMEDY & VENTRILOQUISM OF TAYLOR MASON

Combining music, ventriloquism, comedy and audience participation sounds like a musical theater production, but it's really one man, Taylor Mason.

Taylor Mason makes people of all ages laugh and laugh hard. His quick wit, flawless delivery & polished material make him a hit with Guests of all ages.

Taylor Mason has a list of credits any A-list celebrity would covet: Disney, Time-Warner, Coke, McDonalds, NBC, CBS, HBO, Carnegie Hall, The Second City Theater, every major comedy club in the USA and more than 500 standing ovations in churches across the land including Saddleback, First Baptist Church Atlanta, Bayside Church to name a few. He brings it all together in a faith-based performance that can be enjoyed by every member of your community regardless of age, race, background or demographic.

DIAMOND JACKPOT BINGO



D Lounge, Deck 4, Midship
Card Sales - 7:15 p.m.
Game Starts - 7:30 p.m.

Join us for 4 cash prize games and your chance to win a Diamond Pendant! Everyone attending will also receive a voucher to collect a free Diamonds International charm bracelet! Complete the Big X in 20 numbers or less, and \$500 could be yours. If not we continue to play for the highest cash prize of the session!

YOUTH ACTIVITIES HIGHLIGHTS



Deck 5, Midship (7-5864) 5:30 p.m. - 12:00 mid

Infants and Toddlers can enjoy toys and activities at It's A Small World Nursery. Reservations are first come, first served so please stop by!



**Deck 5, Midship (7-1440)
6:45 p.m. - 12:00 mid**



**Deck 5, Midship (7-1445)
5:30 p.m. - 12:30 a.m.**

REGISTRATION FOR 3-12 YEAR OLDS

Meet the Youth Activities Team in Disney's Oceaneer Lab and Disney's Oceaneer Club. Complete your registration and learn all about the Themed Experiences this cruise!

CLUBHOUSE SERIES - The Clubhouse Themed Experiences focus on movement and feature content which appeals to younger children. *Recommended for children seven years and younger.*

STORYBOOK SERIES - The Storybook Series Themed Experiences are designed with a strong connection to the Disney classic stories. *Recommended for children seven years and younger.*

JUMP UP! SERIES - The Jump Up! Themed Experiences will include large group games & movement-oriented activities.

CREATE & INVENT SERIES - The Create & Invent Themed Experiences will have a tactile focus allowing children to create and admire their work.

IN THE SPOTLIGHT SERIES - The In The Spotlight Themed Experiences focus on children's stage presence with lots of activities and enthusiasm. *Recommended for children seven years and older.*

SOLVE IT! SERIES - The Solve It! Themed Experiences are less active, but will challenge children with problem/solutions-based activities. *Recommended for children seven years and older.*

YOUTH ACTIVITIES OPEN HOUSE - Activities for families, adults and children of all ages to enjoy together.

Dine & Play

A convenience for families dining at 8:15 p.m., our Youth Activities Counselors will be available at 9:15 p.m. at the entrance of Royal Palace, Enchanted Garden and Animator's Palate dining rooms to bring registered children to join the fun in the Youth Activity areas.

Youth Activities Open House

Open House is an opportunity for all to come and participate in a variety of exciting activities and free time in the Oceaneer Club, Oceaneer Lab, Edge and Vibe throughout the cruise. During these times secured programming will still be offered in the other venue for those looking to check their children into care.



Deck 13, Midship (7-9743) 6:00 p.m. - 1:00 a.m.
(11-14 YEAR OLDS)

TAKING IT TO THE EDGE

10:00 p.m.
Come to Edge and get all the info you need to squeeze every bit of fun out of your stay onboard.



**Entrance on Deck 4, Forward (7-9417)
6:00 p.m. - 1:00 a.m.**
(14-17 YEAR OLDS)

THE DOWNLOAD

10:30 p.m.
Come up to Vibe and help plan all the fun activities you will be doing this cruise with your new friends!

BUENA VISTA THEATRE

Feature Movies this Voyage

SUNDAY - PORT CANAVERAL

5:30 p.m.	G	Monsters University	
8:30 p.m.	G	Monsters University	
10:30 p.m.	PG	Frozen	

MONDAY - NASSAU

11:30 a.m.	PG-13	Saving Mr. Banks	
2:15 p.m.	PG	Frozen	
5:45 p.m.	PG	Frozen	
8:15 p.m.	PG	Frozen	
11:00 p.m.	PG-13	Thor: The Dark World	

TUESDAY - DISNEY'S CASTAWAY CAY

8:45 a.m.	PG	Frozen	
2:00 p.m.	PG-13	Thor: The Dark World	
5:15 p.m.	PG-13	Saving Mr. Banks	
8:15 p.m.	PG-13	Saving Mr. Banks	
11:00 p.m.	PG-13	Thor: The Dark World	

WEDNESDAY - DAY AT SEA

8:00 a.m.	PG	Frozen	
10:15 a.m.	G	Monsters University	
12:45 p.m.	PG-13	Saving Mr. Banks	
3:30 p.m.	PG	Frozen	
5:30 p.m.	PG-13	Thor: The Dark World	
8:15 p.m.	PG-13	Thor: The Dark World	
10:45 p.m.	PG-13	Saving Mr. Banks	



Bring the entire family and test your Disney knowledge in the high-tech interactive game show, Family Fusion.

**D Lounge,
Deck 4, Midship,
9:45 p.m.**



It's time to play everyone's favorite couple's game show, Match your Mate!

**Evolution (18+),
Deck 4, Aft,
10:30 p.m.**

MORE TO ENJOY WHILE ONBOARD



DISNEY VACATION CLUB® MEMBERS CELEBRATION

Members! Mix and mingle with other Members and learn how you can enhance your Membership! Please see a Disney Vacation Club representative on Deck 4, Midship, or call 7-2805 from your stateroom phone for more information.

NEW IN 2014!

The choice is yours! Set sail for the Southern Caribbean from fabulous San Juan, Puerto Rico. Journey to Alaska and explore historic Sitka. Visit the Greek Isles and Venice. Begin your exploration today! Stop by the Future Cruise Sales Desk and ask about our special onboard booking offer.

PORT & SHOPPING INFORMATION

Join your Shopping Guides Scott and Ashley today at 2:45 p.m. in the Buena Vista Theatre to learn about the incredible shopping ashore in Nassau! Over \$1,000 in give-a-ways and prizes! Arrive early for free gifts and more!



RAINFOREST DELUXE CRUISE PASS

Enjoy our scented showers, aroma steam, sauna rooms and private jacuzzi overlooking the ocean. Also, read a nice book on the warm loungers! Unlimited entry when you purchase your cruise pass today!

Couples \$144.00 and Singles \$101.00
Limited number of passes on sale!

*Senses Spa & Salon, Deck 11, Forward
Ext. 7-1465*

TODAY'S SHOPPING SPECIAL

Swiss made watches with intricate details. Purchase face and band separately to personalize the look. Available ONLY in Whitecaps.



WHITECAPS
Deck 3, Forward



SAY CHEESE!

Professional Portraits, Lobby Atrium, Deck 3, Midship.

Lifestyle - Six Guests maximum

7:15 p.m. - 8:30 p.m. & 9:30 p.m. - 10:15 p.m.

Larger Groups - Please contact the Shutters team on Deck 4 for an appointment

**Please note that photos are available for viewing on our interactive photo kiosks approximately five hours after being taken and are only available for purchase during this cruise.*

BEVERAGE SEMINARS AT SEA

Indulge in the world of beverage! Our beverage team is sharing all their secrets about your favorite drinks. Please visit District Lounge between 12:00 p.m. and 3:30 p.m. to secure your spot. Tasting seminars are for Guests 21 and over. Limited availability.

FOUR-NIGHT WINE PACKAGES:

THE CLASSIC WINE PACKAGE & THE PREMIUM WINE PACKAGE

These four-night packages entitle you to select fine wines from our specially designed wine list with up to 25% savings over regular prices. Your dining server will provide more details.

WIRELESS INTERNET: KEEPING YOU CONNECTED AT SEA

\$0.75 per minute, or save money by buying blocks of time. \$27.50 for 50 minutes, \$40 for 100 minutes and \$75 for 250 minutes. Wireless information sheets are available at Guest Services, Deck 3, Midship. Please note: Due to satellite connectivity, onboard internet service will be noticeably slower than you may be accustomed to and may at times be interrupted or unavailable.



From a visit to the world-renowned Atlantis Resort in Nassau to parasailing high above the turquoise waters around Castaway Cay, there is an adventure for everyone on your Disney Dream cruise. Visit the friendly team at the Port Adventures Desk, Deck 5, Midship, to learn more about these, and many more Port Adventures.

SHOPPING

VISTA GALLERY FINE ART

Come experience the Storytellers collection featuring art from the influential and inspired artists of the Walt Disney Animation Studios. Also view pieces from the silent auction that will close on the final night of the cruise. Vista Gallery, Deck 4, Midship.

MAGICAL MAKEOVERS WITH GLITTER & GO

Fairy Godmothers-in-Training have boarded the Disney Dream and are anxiously awaiting to give you a sparkly transformation with the Glitter & Go makeover experience. Guests ages 3-12 will have the opportunity to allow their inner princess to shine through in time for dinner or for meeting the lovely Disney Princesses themselves! For more information, please see a Merchandise Crew Member at Mickey's Mainsail, Deck 3 Forward.

GREAT REASON TO SHOP ONBOARD!

Stop by Whitecaps, Deck 3 Forward, and receive a Disney Cruise Line® Pillow for \$16.95 with any merchandise purchase of \$30.00 or more, or receive a Chamilia Ship Charm for \$30.00 with any merchandise purchase of \$40.00 or more. While supplies last. Offer not valid on previous purchases. Offer subject to change without notice.

TAX AND DUTY FREE HIGHLIGHT

A great range of jewelry, fragrances, and liquor all at competitive prices is available. Find the TAG Heuer watch to suit your style from our onboard collection. Whitecaps, Deck 3, Forward.

VERA BRADLEY BAGS AND ACCESSORIES

With their distinctive and colorful fabrics and trims, view our collection of Vera Bradley bags and accessories including the new Vera Bradley tote bags designed especially for Disney Cruise Line® available at Whitecaps. Deck 3, Forward.

IMPORTANT NOTICE FOR NASSAU

Please note that it is important to get all of your shipboard, poolside, and island essentials this evening as tomorrow our merchandise locations will not open until after we have left the port. This is due to port regulations, so please consider your needs for tomorrow today.

Due to port regulations, when the ship is docked, the stores will remain closed.

IMPORTANT INFORMATION

Security Notice

All Guests (including children) who wish to disembark the ship are required to present their Key to the World card at the gangway. A photo ID is also required for those Guests who are 18 years of age or older. Guests under the age of 18 are required to have a parent, guardian or other responsible adult sign an authorization form at the Guest Service Desk if they wish to go ashore unaccompanied or with any adult from another stateroom.

Sunscreen/Insect Repellent Advisory
Please remember to use plenty of sunscreen and mosquito repellent when venturing ashore.

Cold and Flu Reminder

Please wash hands frequently and thoroughly, particularly before meals. Contact the Health Center by dialing 7-1923, should anyone in your party become ill.

Corridor Quiet Hours

As a courtesy to all our Guests, please recognize quiet hallway hours from 10:00 p.m. til 8:00 a.m.

Inclement Weather

For the safety of all Guests, outdoor events may be changed due to unforeseen weather conditions.

Environmental Message

With Disney's commitment to the environment, please refrain from throwing anything over the ship's side. Thank you!

No Reserved Seats Policy

As a courtesy to all our Guests, we kindly advise that the saving of seats is not permitted in the Walt Disney Theatre, and the saving of the sun loungers is not permitted on Deck 11, 12 and 13. Items left unattended will be returned to lost and found at Guest Services, Deck 3, Midship.

Smoking

For the comfort of our guests the following areas are designated as Smoking areas:

- Deck 13, Forward, port side, by "Currents"
- Deck 12, Aft, port side outdoor area that is accessible through the Meridian Lounge
- Deck 4, Aft, port side from 6:00 p.m. to 6:00 a.m. only (all of Deck 4 is no smoking from 6:00 a.m. to 6:00 p.m.)

-Smoking is prohibited inside all guest staterooms and on stateroom verandahs. Guests found smoking in their staterooms or on their verandahs will be charged a \$250 stateroom recovery fee. Electronic cigarettes may only be used in designated smoking areas.

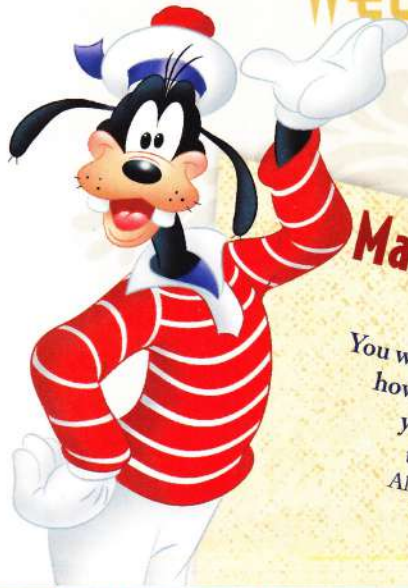
Walt Disney Theatre

Theatrical performances may use artificial fog, strobe lights, pyrotechnics and other special effects. For the safety of our performers and the comfort of those around you, the use of any photography, video recording devices or any electronic equipment is prohibited.

Verandah Safety

Please do not leave any combustible materials on your balcony when not present in your stateroom for safety reasons.

WELCOME ABOARD!



Mandatory Life Boat Drill

4:00 PM
 (All Guests must attend)
 You will not need to wear your life jacket,
 however it is critical that you bring
 your Key To The World card
 to your Assembly Station.
 All ship services will be suspended
 between 3:45 and 4:30 p.m.

Your Assembly Station
 is indicated on your
 Key To The World card.



SAILING AWAY

It's time to go Sailing Away!
 Join Mickey and Minnie along
 with Tinker Bell and the rest of
 the gang as they welcome you
 aboard the Disney Dream.

**4:30 p.m.,
 Deck Stage,
 Deck 11, Midship**

Afternoon	1:45	2:00	2:15	2:30	2:45	3:00	3:15	3:30	3:45	4:00	4:15	4:30	4:45	5:00	5:15	5:30	5:45	6:00	6:15	6:30	6:45							
FUNNEL VISION	Virtual Tours <small>Funnel Vision</small>																				Toy Story (G) <small>Funnel Vision</small>							
BUENA VISTA THEATRE					Port & Shopping Show																		Monsters University (G) DOLBY 3D <small>Duration: 1 Hour 43 Minutes</small>					
CHARACTER																												
FUN FOR ALL AGES	Walking Ship Tour <small>Meet at PreLudes (Earlier Tour at 1:00 p.m.)</small>		Port & Shopping Show <small>Buena Vista Theatre</small>																		SAILING AWAY <small>Deck Stage</small>		Live Music with The Dreamers <small>Lobby Atrium</small>		Red Carpet Arrivals		THE GOLDEN MICKEYS <small>A Timeless Tribute</small> <small>Walt Disney Theatre</small>	
	Poolside Jams <small>Deck Stage, Deck 11, Midship</small>																											
	Live Piano with Tom Scott <small>Lobby Atrium</small>		Disney Vacation Club Members Celebration <small>D Lounge</small>																		Youth Activities Open House <small>Edge and Vibe</small>							
ADULTS	NFL Football: San Diego vs. Cincinnati <small>< Starts 1:00 p.m. 687 Pub (Subject to Satellite Availability)</small>				Spa Raffle <small>Senses Spa & Salon</small>																		Footprint Analysis <small>Senses Fitness Center</small>		NFL Football: San Francisco vs. Green Bay Packers <small>687 Pub (Subject to Satellite Availability)</small>			
VIBE <small>14-17 YEARS OLD</small>	Youth Activities Open House																											
EDGE <small>11-14 YEARS OLD</small>	Youth Activities Open House																											
OCEANEER LAB <small>3-12 YEARS OLD</small>	Youth Activities Open House & Registration																											
OCEANEER CLUB <small>3-12 YEARS OLD</small>	Youth Activities Open House & Registration																											

All ship services will be suspended during this time for the mandatory Boat Drill scheduled for 4:00 p.m.

Please refer to the posted drill instructions prior to heading to your Assembly Station.



Evening	7:00	7:15	7:30	7:45	8:00	8:15	8:30	8:45	9:00	9:15	9:30	9:45	10:00	10:15	10:30	10:45	11:00	11:15	11:30	11:45	12:00					
FUNNEL VISION					Mulan (G) <small>Funnel Vision</small>																		Disneynature: Earth (G) <small>Funnel Vision</small>			
BUENA VISTA THEATRE									Monsters University (G) DOLBY 3D <small>Duration: 1 Hour 43 Minutes</small>								Frozen (PG) <small>Duration: 1 Hour 48 Minutes</small>									
CHARACTER	Minnie Mouse <small>Lobby Atrium (H)</small>								Donald Duck <small>Lobby Atrium (H)</small>																	
FUN FOR ALL AGES	Bingo Pre Sales		Diamond Jackpot BINGO <small>D Lounge</small>		Red Carpet Arrivals		THE GOLDEN MICKEYS <small>A Timeless Tribute</small> <small>Walt Disney Theatre</small>		Family Fusion <small>D Lounge</small>		Pluto <small>Lobby Atrium (P)</small>		Family Superstar Karaoke <small>D Lounge</small>		Live Music with The Dreamers <small>Lobby Atrium</small>		Family Superstar Karaoke <small>D Lounge</small>									
ADULTS	70's Music Trivia <small>687 Pub</small>				NCAA Football: Arkansas vs. Ball State <small>687 Pub (Subject to Satellite Availability)</small>				Club 18*21 - Ice Breaker <small>Evolution</small>				Whiskey Tasting (21+) <small>Meridian (Pre Book, Nom. Fee)</small>				MATCH MAKERS <small>Evolution</small>		Rewind Featuring Guest DJ Randy <small>Evolution</small>							
VIBE <small>14-17 YEARS OLD</small>	Game Challenge																									
EDGE <small>11-14 YEARS OLD</small>	Guesstures				Profiles		Ice Breakers		Taking it to The Edge		Choose Your Cruise		Zombified				Gender Wars									
OCEANEER LAB <small>3-12 YEARS OLD</small>	Choose Your Cruise																									
OCEANEER CLUB <small>3-12 YEARS OLD</small>	Open for Secured Activities		Toy Story Boot Camp		Picture This		Choose Your Cruise		Human Bingo		Phrases of the Caribbean: Ties of Fortune		Meet Your Counselors		Memory Wall											

Symbol for activities that will be repeated during the cruise

Fold along the dotted lines and take me with you so you don't miss any of the fun!

IN THE SPOTLIGHT SERIES

SOLVE IT! SERIES

RAMP UP! SERIES

CREATE & INVENT SERIES

OPEN HOUSE

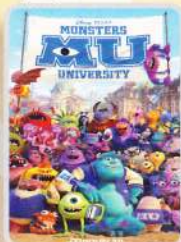
CLUBHOUSE SERIES

STORYBOOK SERIES

SUNDAY, JANUARY 5, 2014 - PORT CANAVERAL

BUENA VISTA THEATRE

DOLBY 3D



5:30 p.m. & 8:30 p.m.
Duration: 1 hr 43 mins
Rating: G



10:30 p.m.
Duration: 1 hr 48 mins
Rating: PG

Character Appearances

PLUTO

Deck 4, Balcony
12:00 p.m. & 1:00 p.m.
Lobby Atrium (V)
7:30 p.m.
Lobby Atrium (P)
9:45 p.m.

GOOFY

Lobby Atrium (V)
8:00 p.m.
Lobby Atrium (P)
10:15 p.m.

DONALD DUCK

Deck 4, Balcony
12:30 p.m. & 1:30 p.m.
Lobby Atrium (H)
9:30 p.m.

SAILING AWAY!

Deck Stage
Deck 11, Midship
4:30 p.m.

MICKEY MOUSE

Deck 4, Balcony
7:30 p.m. & 9:45 p.m.

MINNIE MOUSE

Lobby Atrium (H)
7:15 p.m.



(H) Hallway - (S) Starboard Side - (P) Port Side - (V) Vestibule

For details of daily Disney character appearances, refer to the character line on your Navigator Grid, or the digital character board in the Lobby Atrium.

YOUTH ACTIVITIES THEMED EXPERIENCES

CLUBHOUSE SERIES
focuses on movement and features content which appeals to younger children.

STORYBOOK SERIES
is designed with a strong connection to the Disney classic stories.

JUMP UP! SERIES
includes large group games & movement-oriented activities.

CREATE & INVENT SERIES
will have a tactile focus allowing children to create and admire their work.

IN THE SPOTLIGHT SERIES
focuses on children's stage presence with lots of activities and enthusiasm.

SOLVE IT! SERIES
are less active, but will challenge children with problem/solutions-based activities.

OPEN HOUSE

are activities for families, adults and children of all ages to enjoy together.

SHIP DIRECTORY

YOUTH ACTIVITIES

DISNEY'S OCEANEER CLUB	DECK 5, MID	6:45 PM - 12:00 MID
DISNEY'S OCEANEER LAB	DECK 5, MID	5:30 PM - 12:30 AM
EDGE	DECK 13, MID	6:00 PM - 1:00 AM
VIBE	DECK 4, FWD	6:00 PM - 1:00 AM
IT'S A SMALL WORLD NURSERY	DECK 5, MID	5:30 PM - 12:00 MID

POOLS & MORE

* Children under 12 must have adult supervision in pool areas.

AQUADUCK	DECK 12, MID	11:45 AM - 3:00 PM 4:30 PM - 10:00 PM
DONALD'S POOL	DECK 11, MID	12:00 PM - 3:30 PM 8:00 PM - 10:00 PM
MICKEY'S POOL	DECK 11, MID	12:00 PM - 12:00 MID
MICKEY'S SLIDE	DECK 11, MID	12:00 PM - 3:30 PM 4:30 PM - 6:00 PM
NEMO'S REEF	DECK 11, MID	12:00 PM - 3:30 PM 4:30 PM - 6:00 PM
QUIET COVE POOL	DECK 11, FWD	12:00 PM - 12:00 MID

RECREATION

GOLF/SPORTS SIMULATORS	DECK 13, AFT	12:30 PM - 3:30 PM 4:30 PM - 6:00 PM
GOOFY GOLF	DECK 13, AFT	5:30 PM - 10:00 PM
GOOFY'S SPORTS DECK	DECK 13, AFT	12:00 PM - 6:00 PM
MIDSHIP DETECTIVE AGENCY	DECK 5, MID	11:00 AM - 11:00 PM
PORT ADVENTURES DESK	DECK 5, MID	12:00 PM - 3:30 PM 4:30 PM - 6:00 PM 7:00 PM - 10:00 PM
SENSES FITNESS CENTER	DECK 11, FWD	12:00 PM - 10:00 PM

GENERAL INFORMATION

ARR-CADE	DECK 11, AFT	24 HOURS
BUENA VISTA THEATRE	DECK 4 & 5, MID	SHOWTIMES
DISNEY VACATION CLUB	DECK 4, MID	5:00 PM - 10:00 PM
FUTURE CRUISE SALES DESK	DECK 4, MID	6:30 PM - 8:30 PM
GUEST SERVICES	DECK 3, MID	24 HOURS
HAIRBRAIDING	DECK 11, MID	4:30 PM - 10:00 PM
MEDICAL HEALTH CENTER	DECK 1, FWD	4:30 PM - 7:00 PM
PORT & SHOPPING DESK	DECK 4, MID	5:00 PM - 10:00 PM
PRELUDES	DECK 3, FWD	5:45 PM - 6:30 PM 8:00 PM - 8:45 PM
SENSES SPA AND SALON	DECK 11, FWD	12:00 PM - 10:00 PM
SHUTTERS PHOTO GALLERY	DECK 4, MID	7:00 PM - 11:00 PM
WALT DISNEY THEATRE	DECK 3 & 4, FWD	SHOWTIMES

SHOPPING

MICKEY'S MAINSAIL	DECK 3, FWD	6:00 PM - 11:00 PM
SEA TREASURES	DECK 3, FWD	6:00 PM - 11:00 PM
QUACKS	DECK 11, MID	
VISTA GALLERY	DECK 4, MID	6:00 PM - 11:00 PM
WHITECAPS	DECK 3, FWD	6:00 PM - 11:00 PM
WHOZITS & WHATZITS	DECK 11, MID	6:15 PM - 10:00 PM

DUE TO PORT REGULATIONS, WHEN THE SHIP IS DOCKED, THE STORES MUST REMAIN CLOSED.

DINNER MENU

Animator's Palate: Pacific Rim Cuisine
Enchanted Garden: Continental Market
Royal Palace: French Dinner
Dining Times: 5:45 p.m. & 8:15 p.m.

DRINK OF THE DAY

Paradise Cocktail (Alcoholic)
Espresso Chiller (Non Alcoholic)

WEATHER FORECAST

Sunday:
Partly Sunny
High: 73°F/23°C
Monday:
Partly Sunny
High: 77°F/25°C

Evening Attire: Cruise Casual

DINING & LOUNGES

LUNCH

CABANAS	DECK 11, AFT	11:45 AM - 3:00 PM
ENCHANTED GARDEN	DECK 2, MID	12:15 PM - 2:00 PM
FILLMORE'S FAVORITES	DECK 11, MID	12:00 PM - 3:15 PM 4:30 PM - 6:00 PM
LUIGI'S PIZZA	DECK 11, MID	12:00 PM - 3:15 PM 4:30 PM - 6:00 PM
TOW MATER'S GRILL	DECK 11, MID	12:00 PM - 3:15 PM 4:30 PM - 6:00 PM

DINNER

ANIMATOR'S PALATE	DECK 3, AFT	5:45 PM & 8:15 PM
ENCHANTED GARDEN	DECK 2, MID	5:45 PM & 8:15 PM
ROYAL PALACE	DECK 3, MID	5:45 PM & 8:15 PM
TOW MATER'S GRILL	DECK 11, MID	6:00 PM - 11:00 PM
PALO & REMY (18+)	DECK 12, AFT	6:00 PM - 9:00 PM

(RESERVATIONS REQUIRED & COVER CHARGE APPLICABLE, DIAL#7-9734)

LATE NIGHT SNACKS

LUIGI'S PIZZA	DECK 11, MID	9:30 PM - 12:00 MID
THE DISTRICT	DECK 4, AFT	10:45 PM - 11:45 PM

ADDED FEATURES

BEVERAGE STATION	DECK 11, MID	24 HOURS
EYE SCREAM	DECK 11, MID	12:00 PM - 12:00 MID
ROOM SERVICE	DIAL 0	24 HOURS

ENTERTAINMENT - LOUNGES - BARS

Adults must be 21 and older to consume alcoholic beverages.

687 PUB (18+ AFTER 9:00 PM)	DECK 4, AFT	12:00 PM - 12:00 MID
BON VOYAGE	DECK 3, MID	11:30 AM - 11:00 PM
COVE BAR (18+)	DECK 11, FWD	12:00 PM - 11:00 PM
COVE CAFE (18+)	DECK 11, FWD	11:30 AM - 12:00 MID
CURRENTS (18+)	DECK 13, FWD	12:00 PM - 11:00 PM
D LOUNGE	DECK 4, MID	SHOWTIMES
DISTRICT LOUNGE (18+ AFTER 9:00 PM)	DECK 4, AFT	12:00 PM - 12:00 MID
EVOLUTION	DECK 4, AFT	9:30 PM - 2:00 AM
FROZONE TREATS	DECK 11, MID	11:30 AM - 11:00 PM
MERIDIAN (18+)	DECK 12, AFT	5:00 PM - 12:00 MID
OUTLOOK	DECK 14, MID	
PINK (18+)	DECK 4, AFT	5:00 PM - 12:00 MID
SKYLINE (18+)	DECK 4, AFT	5:00 PM - 12:00 MID
VISTA CAFE	DECK 4, MID	12:00 PM - 11:00 PM
WAVES	DECK 12, AFT	12:00 PM - 7:00 PM

Consumers who order raw or partially cooked, ready-to-eat food of animal origin, are hereby informed that the food is not sufficiently cooked to ensure its safety.



MIDSHIP DETECTIVE AGENCY

Use your detective know-how and our special detective "badge" to search the ship and catch your criminal! Deck 5, Midship Kiosks.

Disney Cruise Line
PORT ADVENTURES

Visit the Port Adventures Desk,
Deck 5, Midship, for bookings & questions.

IMPORTANT NUMBERS

Fire/Security: 7-3001
Medical Emergency: 7-3000
Health Center: 7-1923