

PERSONAL NAVIGATOR

TUESDAY, MARCH 5, 2013

Sunrise 7:06 a.m. Sunset: 6:56 p.m.
Evening Attire: Cruise Casual
All Ashore: 8:30 a.m. All Aboard: 12:30 a.m.

Tuesday: Cloudy High: 68°F/20°C
Wednesday: Partly Cloudy High: 78°F/26°C

COSTA MAYA, MEXICO


Disney WISHES

On the eve of their graduation, three best friends go on a magical journey down the wishing well. A host of Disney characters help them discover the connection between children who are becoming adults, and adults who stay in touch with being a kid at heart.

Walt Disney Theatre
Decks 3 & 4, Forward
6:15 p.m. & 8:30 p.m.



As a courtesy to all guests, we kindly advise that the saving of seats is **not** permitted in the Walt Disney Theatre.

 Assistance available at the entrance to the Walt Disney Theatre 30 minutes prior to show time.



Costa Maya Port Information

Costa Maya is a tourist region located on the Yucatán Peninsula 100 miles south of Playa del Carmen near the border of Belize in Mexico. Comprised of two small villages, Mahahual and Xcalak, Costa Maya provides a picture-perfect getaway the entire family is sure to love.

Early Mayans were predominant in the area from 200 B.C. to 900 A.D. In the 16th century, English pirates ravaged the coast and battled the Spanish for control of the region. At the end of the 19th century, the Mexican Navy took over the land. A treaty with Britain was signed soon after limiting the territorial rights of Mexico, thereby forcing Mexico to build a new trade port in Xcalak.

By the 1950's, the economy was flourishing as businesses - including stone and wood construction companies - made the area a supply center for the region. Steady growth continued until the mid-1990's when the government outlined a plan to make Costa Maya a tourist destination. Today, tourism is Costa Maya's main economic revenue stream and it's easy to understand why, thanks to the island's plethora of unspoiled natural beauty that has remained untouched for thousands of years.

DOCKING

The ship will dock at the Puerto Costa Maya, located approximately 1/2 mile north of Mahahual.



FAMILY CABARET

Featuring the Comedy & Hypnotism of Dale K, as he entertains the entire family in this fun-filled show.

The Tube,
Deck 4, Aft,
7:30 p.m.

Don't Miss:

Disney Channel on Deck

Deck Stage, Deck 11, Midship - 4:00 p.m.

Don't change that channel! It's time for a Disney Channel pool party! Your Cruise Staff will host an exciting day of games and contests in between your favorite Disney Channel shows! So sit back, relax, and enjoy the sun!

50 Movie Quotes Trivia (18+)

O'Gills Pub, Deck 4, Aft - 4:00 p.m.

"Life is like a box of Chocolates" Know the movie? Join your Cruise Staff and test your Movie Quote knowledge.

Saludos Amigos Fiesta

D Lounge, Deck 4, Midship - 10:15 p.m.

Bring the family out to this interactive dance party featuring The Three Amigos. We will party with Donald Duck, learn Salsa, Merengue and have a Latin good time!

80's Music Challenge (18+)

The Tube, Deck 4, Aft - 10:30 p.m.

"Moon Walk" back to the 80's, as we put your musical knowledge of the decade to the test.



Please check your tour tickets for meeting times and locations.
Visit the Port Adventures Desk, Deck 5, Midship for any questions.

DINNER MENU Animator's Palate: Prince & Princess Menu
Enchanted Garden: Prince & Princess Menu
Royal Court: Prince & Princess Menu

DRINK OF THE DAY Key Lime Margarita (Alcoholic)
Cranberry NO-Jito (Non Alcoholic)

IMPORTANT NUMBERS

Fire/Security: 7-3001
Medical Emergency: 7-3000
Health Center: 7-1923

FUN FOR ALL AGES HIGHLIGHTS

ADULT ACTIVITY HIGHLIGHTS



DISNEY CHANNEL ON DECK

Deck Stage, Deck 11, Midship - 4:00 p.m.

Don't change that channel! It's time for a Disney Channel pool party! Your Cruise Staff will host an exciting day of games and contests in between your favorite Disney Channel shows! So sit back, relax, and enjoy the sun!

DISNEY VACATION CLUB GROUP PREVIEW

The Tube, Deck 4, Aft - 4:30 p.m.

Want to learn more about taking magical vacations year after year? Stop by our interactive group presentation to find out more information from a Disney Vacation Club representative.

PLAYHOUSE D LOUNGE

D Lounge, Deck 4, Midship - 5:00 p.m.

Calling our youngest of cruisers! Here is a special Playtime that is just for you. Come meet new friends and join in on the fun as your Cruise Staff team takes you through interactive activities made just for you!

OFFICER PIN TRADING

Preludes, Deck 3, Forward - 7:30 p.m.

Come trade pins with the officers of the Disney Fantasy.

DISNEY TRIVIA

D Lounge, Deck 4, Midship - 9:45 p.m.

Navigate your way through another round of questions to test how much you really know about Disney.

FAMILY SUPERSTAR KARAOKE

D Lounge, Deck 4, Midship - 10:45 p.m.

Join your Cruise Staff in D Lounge tonight and sing along to your favorite song - fun for everyone.

SENSES SPA FITNESS CLASSES & SEMINARS

Sunrise Stretch - Senses Fitness Center - 7:00 a.m.

Fab Abs - Senses Fitness Center - 7:30 a.m. & 5:00 p.m.

Body Sculpt Boot Camp (Nom. Fee) - Senses Fitness Center - 9:00 a.m.

Facial Workshop - Senses Spa & Salon - 11:00 a.m.

Pathway to Yoga - Senses Fitness Center - 4:00 p.m.



TASTING CLASSES

Whiskey Tasting (21+) - Meridian (Nom. Fee Pre Book) - 10:30 p.m.

Please make reservations for tastings at Guest Services for a nominal fee.

Tasting Seminars are only for Guest's 21 and Older.

CLUB
18*21

CLUB 18*21 - SOCIAL

Cove Cafe, Deck 11, Forward - 11:45 a.m.

CLUB 18*21 - ARR-CADE HANGOUT

Arr-Cade, Deck 11, Aft - 5:00 p.m.

CLUB 18*21 - MIXER

O'Gills Pub, Deck 4, Aft - 10:00 p.m.

50 MOVIE QUOTES TRIVIA

O'Gills Pub, Deck 4, Aft - 4:00 p.m.

"Life is like a box of Chocolates" Know the movie? Join your Cruise Staff and test your Movie Quote knowledge.

LIVE MUSIC WITH JUNE GYPSIES

La Piazza, Deck 3, Aft - 9:45 p.m. & 10:45 p.m.

Join June Gypsies for live music in La Piazza for their first set of the evening at 9:45 p.m. Then enjoy a tribute to The Beatles at 10:45 p.m.

POP!

The Tube, Deck 4, Aft - 10:00 p.m.

Have you been told you are full of useless information about pop culture? If the answer is "Yes", then you have what it takes to play the high energy game show all about the world of Pop!

80'S/90'S REMIX WITH GUEST DJ STREAK

The Tube, Deck 4, Aft - 11:00 p.m.

Join Guest DJ Streak, as he spins the tunes and remix the 80's & 90's!



\$5,000 MEGA JACKPOT BINGO

D Lounge, Deck 4, Midship

Card Sales - 7:15 p.m.

Game Starts - 7:30 p.m.

It's big, it's massive, it's supersized. It's \$5,000 MEGA Jackpot Bingo! Take home \$5,000 if you can cover your card in 46 numbers or less. If not, we carry on to play for the biggest cash prize of the session.



YOUTH ACTIVITY HIGHLIGHTS

DINE & PLAY

A convenience for families dining at 8:15 p.m., our Youth Activities Counselors will be available at 9:15 p.m. at the entrance of Royal Court, Enchanted Garden and Animator's Palate dining rooms to bring registered children to join the fun in the Youth Activity areas.

CLUBHOUSE KIDS

Is a structured play time offered during secured programming, and is recommended for children ages 3-7. During Clubhouse Kids time in the Oceaneer Club, Counselors will be able to interact and encourage the youngest cruisers in specific activities, ensuring they are engaged.



Deck 5, Midship (7-1440)
(3-12 years old) **8:00 a.m. - 11:00 p.m.**

DISNEY ANIMATION: CREATING A CHARACTER

2:00 p.m.
Go behind the scenes at Walt Disney Animation Studios as Walt Disney himself talks about his most famous characters, then learn the basic techniques of drawing Mickey and Donald in this fun and interesting enrichment program.

CAMP ROCKING OUT!

9:15 p.m.
Discover your inner Jonas Brother and relive the fun of the Camp Rock films. Singing, Dancing, tents it's more fun than you ever thought was possible!



Deck 5, Midship (7-1445)
(3-12 years old) **9:00 a.m. - 12:00 mid**

SUPER SLOPPY SCIENCE -EGGSPERIMENTS

9:30 a.m.
Join Professor Make-O-Mess in some of the most extreme experiments you will ever seen in the world of Super Sloppy Science!

PISTON CUP CHALLENGE

8:30 p.m.
It's Dinoco time and you're part of the pit crew! Design your own race car and see if you've got what it takes to end up in the Winner's Circle!



Deck 13, Midship (7-9743)
(11-14 years old) **10:00 a.m. - 1:00 a.m.**

ANYONE CAN COOK: PIZZA

2:30 p.m.
Anyone can cook as we work together to create some of our favorite treats. From our galley to yours; join our Chef as they show you how to create pizza!

THAT'S HILARIOUS

7:30 p.m.
Ever wanted to show off your comedy skills? Then be a part of the cast for the crazy improv show "That's Hilarious" and put on a live show for your friends.



Entrance on Deck 4, Forward (7-9418)
(14-17 years old) **10:00 a.m. - 2:00 a.m.**

ANYONE CAN COOK: CUPCAKES

6:00 p.m.
Anyone can cook as we work together to create some of our favorite treats. From our galley to yours; join our Chef as they show you how to create cupcakes!

ESPN DREAM TEAM DRAFT DAY - FOOTBALL

7:15 p.m.
Join the "Commissioner" and engage in this interactive fantasy football draft unlike anything you've ever seen! Can YOU draft the greatest football team of All-Time?

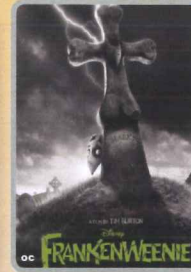
BUENA VISTA THEATRE

Today's Movies

DOLBY.3D **OC** - Open Captioning



10:00 a.m.
Run Time: 1 hr 40 min
Rating: G



1:45 p.m.
Run Time: 1 hr 24 min
Rating: PG



3:45 p.m.
Run Time: 1 hr 41 min
Rating: PG

DOLBY.3D



5:45 p.m. & 8:15 p.m.
Run Time: 1 hr 24 min
Rating: PG

DOLBY.3D



10:30 p.m.
Run Time: 2 hr 22 min
Rating: PG-13



Have you been told you are full of useless information about pop culture? If the answer is "Yes", then you have what it takes to play the high energy game show all about the world of Pop!

**The Tube (18+),
Deck 4, Aft,
10:00 p.m.**



Bring the family out to this interactive dance party featuring The Three Amigos. We will party with Donald Duck, learn Salsa, Merengue and have a Latin good time!

**D Lounge,
Deck 4, Midship,
10:15 p.m.**

YOUTH ACTIVITIES OPEN HOUSE

Open House is an opportunity for all to come and participate in a variety of exciting activities and free time in the Oceaneer Club, Lab and Edge throughout the cruise. During these times secured programming will still be offered in the other venue for those looking to check their children into care.

Disney's Oceaneer Lab: 1:00 p.m. - 2:30 p.m.
Disney's Oceaneer Club: 9:00 a.m. - 10:30 a.m.

Edge: 9:00 a.m. - 10:00 a.m.
Vibe: 7:15 p.m. - 8:30 p.m.

MORE TO ENJOY WHILE ONBOARD



ADVENTURES BY DISNEY

Join us for a special presentation on Thursday to learn what traveling with Adventures by Disney is all about. See our Adventure Guide on Deck 4, Midship.



DISNEY VACATION CLUB® GROUP PREVIEW

Want to learn more about taking magical vacations year after year? Please see a Disney Vacation Club representative on Deck 4, Midship, or call 7-2805 from your stateroom phone for more information about our interactive group presentation.



COSTA MAYA SHOPPING

Shopping Guides Johan & Marissa will be available on the gangway from 8:00 a.m. – 9:00 a.m. for last minute shopping questions. Make sure to pick up your Shopping Coupons and VIP cards and don't miss the Shopping Party going on at Diamonds International #1a on your Shopping Map from 9:30 a.m. - 12:00 p.m.

ONBOARD AIRLINE CHECK IN

If you would like to have your boarding passes printed for you onboard and have your luggage taken to the airport for you, register by midnight tomorrow. If you have a Disney Cruise Line airport transfer to Orlando International Airport and fly with one of the participating airlines, stop at Guest Services, Deck 3, Midship to register.

ARR-CADE

Where can you be a ninja, play the guitar like a rock star, race a car down the streets of Tokyo and along the way WIN some great prizes? Arr-CADE located Deck 11, Aft, where the pirates play.

ON DEMAND TV

Watch Disney movies, Hollywood features, ABC Shows, and even captioned content, plus much more "On Demand" for FREE in the comfort of your stateroom! Bookmark your movie and come back to watch it later. Press MENU on your stateroom television remote control, and follow the prompts.



Welcome to Costa Maya, a secluded destination on Mexico's stunning Riviera Maya! The port of Costa Maya is booming and there are many amazing new Port Adventures to choose from. There is limited availability on tours, so stop by the Port Adventures Desk, Deck 5, Midship, to reserve your place. Don't forget to plan ahead for Castaway Cay, where only a few Stingray encounters remain available.

SHOPPING

STORES WILL REMAIN CLOSED ALL DAY TODAY
Due to our late departure from Costa Maya today, the stores will remain closed all day as per port regulations. The stores will open again tomorrow as usual once we have left Cozumel. Thank you for your understanding and we look forward to seeing you in store tomorrow.

VISTA ART GALLERY

Stop by the Vista Art Gallery today to view our selection of Thomas Kinkadee Limited Edition Disney paintings. While there, see if you can find some hidden characters in the artwork. Deck 4, Midship.

OFFICER PIN TRADING

Come and trade pins with the officers of the Disney Fantasy at 7:30 p.m. in Preludes, Deck 3, Forward.

O'GILLS PUB MERCHANDISE

Get your very own O'Gills T-shirts, hats, mugs and O'Gills Irish Cream liquor. A great way to remember your sailing on the Disney Fantasy! Available in White Caps and Sea Treasures, Deck 3, Forward.

CHAMILIA EXCLUSIVE!

Remember your Disney Cruise forever! Get 10% off the Disney ship charm when you purchase a Chamilia bracelet, necklace or pair of earrings. Offer only available in White Caps, Deck 3, Forward

BIBBIDI BOBBIDI BOUTIQUE

Make your Princesses' Fantasies come true with the Fantasy package. She receives a headband, tutu and T-shirt. Bibbidi Bobbidi Boutique, Deck 5, Midship.

Due to port regulations, when the ship is docked, the stores will remain closed.

SENSES SPA & SALON

SALON TASTER SPECIAL

- Scalp Massage
- European Facial
- Hand Treatment
- Sunglow Makeover
- Conditioning Hair Treatment
- Eye Collagen Treatment
- Foot & Ankle Massage
- Neck & Shoulder Massage

Three for 99.00
Five for 119.00
All Eight for 139.00

BIBBIDI BOBBIDI BOUTIQUE

Becoming the princess of your dreams creates memories for a lifetime. Where Fairy Godmothers in training are ready with Pixie Dust and Magic! Make your reservations for princess makeovers and the Pirate League today. Limited space available. Bibbidi Bobbidi Boutique is located on Deck 5, Midship, or call ext. 9438 to make a reservation.

Shutters DIGITAL PACKAGES

Do you only need a small number of digital images of your photos? We now offer two digital packages where you can choose your selected images in the comfort of your own home! Send them to friends or upload them on social media sites, the choice is yours! Please see one of our friendly Shutters staff to explain this great new product. Your photos will be available for viewing on our interactive kiosks in Shutters Digital as well as in your personal photo folder in Shutters, Deck 4 Midship, Conditions applies.

**Please note that photos are available for viewing on our interactive photo kiosks approximately five hours after being taken and are only available for purchase during this cruise.*

IMPORTANT INFORMATION

Security Notice
All Guests (including children) who wish to disembark the ship are required to present their Key to the World card at the gangway. A photo ID is also required for those Guests who are 18 years of age or older. Guests under the age of 18 are required to have a Parent, Guardian or other responsible adult sign an authorization form at the time it is given out if they wish to go ashore unaccompanied. Authorization forms are available at the gangways and Guest Services.
Please Note:
Please remember to use plenty of sunscreen & mosquito/ Insect repellent when venturing ashore.

Cold and Flu Reminder
Please wash hands frequently and thoroughly, particularly before meals. Contact the Health Center by dialing 7-1923, should anyone in your party become ill.

Corridor Quiet Hours
As a courtesy to all our Guests, please recognize quiet hallway hours from 10:00 p.m. til 8:00 a.m.

Inclement Weather
For the safety of all Guests, outdoor events may be changed due to unforeseen weather conditions.

Environmental Message
With Disney's commitment to the Environment, please refrain from throwing anything over the Ship's side. Thank you!

No Reserved Seats Policy
As a courtesy to all our Guests, we kindly advise that the saving of seats is not permitted in the Walt Disney Theatre, and the saving of the sun loungers is not permitted on Deck 11, 12, and 13. Items left unattended will be returned to lost and found at Guest Services, Deck 3 Midship.

Smoking
For the comfort of our guests the following areas are designated as Smoking areas: - Promenade Deck (Deck 4), smoking is permitted Port Side, Aft only from 6:00 p.m. to 6:00 a.m.
- Currents - Deck 13, Forward, Port Side.
- Meridian Bar - Deck 12, Aft, Port Side, outside.
-Smoking is permitted on stateroom verandahs. Smoking is prohibited inside all guest staterooms. Guests found smoking in their staterooms will be charged a \$250 stateroom recovery fee.

Walt Disney Theatre
Theatrical performances may use artificial fog, strobe lights, pyrotechnics and other special effects. For the safety of our performers and the comfort of those around you, the use of any photography, video recording device or any electronic equipment is prohibited.

Verandah Safety
Please do not leave any combustible materials on your balcony when not present in your stateroom for safety reasons.

D00050 03-05-2013 ©DISNEY

Morning	8:30	8:45	9:00	9:15	9:30	9:45	10:00	10:15	10:30	10:45	11:00	11:15	11:30	11:45	12:00	12:15	12:30	12:45	1:00	1:15	1:30	
FUNNEL VISION			Dumbo (G) Funnel Vision				Pixar Short Films (G) Funnel Vision						Monsters, Inc. (G) Funnel Vision									
MOVIES							Finding Nemo (G) Buena Vista Theatre															
CHARACTER			Mickey Dk 4, Mid		Minnie Dk 4, Mid		Goofy Goofy's Sports Deck		Tinker Bell Lobby Atrium (V)		Stitch Dk 4, Mid											
FUN FOR ALL AGES	Last Minute Shopping Advice Gangway						Board Games Available in O'Gills Pub															
	Port Adventures - Please check your tickets for meeting times and locations																					
	Midship Detective Agency Deck 2 & 5, Midship																					
ADULTS	Friends of Bill W. Outlook, Deck 14, Mid		Books and Magazines Available in Cove Cafe								Club 18*21 - Social Cove Cafe											
			Boot Camp (Nom. Fee) Senses Fitness Center								Facial Workshop Senses Spa & Salon											
VIBE 14-17 YEARS OLD							Coffee Break			Brain Teasers			Sun Deck Fun									
EDGE 11-14 YEARS OLD			Open House		Checkers Challenge			Four Square			Animation Cells			Chillin' in the Edge								
OCEANEER LAB 3-12 YEARS OLD			Super Sloppy Science			GAGA Ball		Craft Corner			Youth Lunch											
					Human Bingo		Magic Show															
OCEANEER CLUB 3-12 YEARS OLD	Play-Doh		Open House				Play-Doh Creations		Make Your Own Puppet			Open House Magic Playfloor Parachute Games Matinee Movie										
	Morning Stretches		Aloha Luau						Puzzle Playtime with Mickey & Friends													

Afternoon	1:45	2:00	2:15	2:30	2:45	3:00	3:15	3:30	3:45	4:00	4:15	4:30	4:45	5:00	5:15	5:30	5:45	6:00	6:15	6:30	6:45	
FUNNEL VISION		Up (PG) Funnel Vision						Disney Channel on Deck Funnel Vision				The Emperor's New Groove (G) Funnel Vision										
MOVIES	Frankenweenie (PG) - with Open Captioning Buena Vista Theatre						Brave (PG) Buena Vista Theatre						Frankenweenie (PG) Buena Vista Theatre									
CHARACTER			Mickey Dk 4, Mid				Mickey Dk 4, Mid				Pinocchio Buzz Dk 4, Mid Lobby Atrium (V)		Tiana Dk 4, Mid		Phineas & Ferb Lobby Atrium (H)		Belle Lobby Atrium (P)					
FUN FOR ALL AGES	Board Games Available in O'Gills Pub						Disney Vacation Club Group Preview The Tube						Live Music with The Switch Lobby Atrium		Live Piano Lobby Atrium		WISHES Walt Disney Theatre					
	Family Crafts - Paper Plane Making La Piazza						Disney Cruise Line Deck Stage, Deck 11, Midship		Playhouse D Lounge D Lounge		Xbox® Kinect™ - Wipeout Challenge O'Gills Pub											
ADULTS	Books and Magazines Available in Cove Cafe						50 Movie Quotes Trivia O'Gills Pub				Club 18*21 Arr-Cade Social Arr-Cade				Pub Quiz O'Gills Pub							
							Pathway to Yoga Senses Fitness Center				Live Guitar with Terry Dobson Deck 12, Forward											
VIBE 14-17 YEARS OLD	Animation Cells			Smoothie Time			Dive into DJ'ing			Disney Animation: Creating a Character			Anyone Can Cook: Cupcakes									
EDGE 11-14 YEARS OLD	Chillin' in the Edge		Anyone Can Cook: Pizza			Pizza Party		GAGA Ball			Ninja		Disney Sing It									
OCEANEER LAB 3-12 YEARS OLD	Open House		Craft Madness		Detective School			Marshmallow Olympics			Youth Dinner			Wii Challenge								
			Xbox Kinect		Bingo									Parachute Games								
OCEANEER CLUB 3-12 YEARS OLD	Matinee Movie		Journey to Neverland		Memory Wall		Once Upon a Time		Monster's Game Galore			Connect Four Challenge		Picture This								
	Disney Animation: Creating a Character																					
OUT AND ABOUT	Basketball Challenge Goofy's Sports Deck																					

Evening	7:00	7:15	7:30	7:45	8:00	8:15	8:30	8:45	9:00	9:15	9:30	9:45	10:00	10:15	10:30	10:45	11:00	11:15	11:30	11:45	12:00
FUNNEL VISION					Bolt (PG) Funnel Vision				The Game Plan (PG) Funnel Vision												
MOVIES	Frankenweenie (PG) Buena Vista Theatre						The Avengers (PG-13) Buena Vista Theatre														
CHARACTER	Minnie Dk 4, Mid	Buzz Lobby Atrium (V)	Mickey Dk 4, Mid	Tiana Lobby Atrium (P)					Woody Lobby Atrium (V)	Phineas & Ferb Lobby Atrium (H)	Goofy Dk 4, Mid										
FUN FOR ALL AGES	Bingo Pre Sales	\$5000 Mega Jackpot Bingo D Lounge			WISHES Walt Disney Theatre				Disney Trivia D Lounge		Family Superstar Karaoke D Lounge		Viva Fiesta D Lounge								
	Cabaret: Dale K The Tube - Hypnotist		Live Piano Lobby Atrium		Officer Pin Trading Preludes				Live Music with The Switch Lobby Atrium		Jazz Ballads with The Switch Lobby Atrium										
ADULTS					Pub Quiz O'Gills Pub		Live Music La Piazza		Pop! The Tube		80's Music Challenge The Tube		80's/90's Remix with Guest DJ Streak The Tube								
	Live Guitar with Terry Dobson O'Gills Pub								Club 18*21 Mixer O'Gills Pub		Whiskey Tasting (21+) Meridian (Nom. Fee Pre Book)		Live Guitar O'Gills Pub								
VIBE 14-17 YEARS OLD	ESPN Dream Team Draft Day - Football		Open House		Chillin in Vibe		Pump It Up		Mad Gab				Gender Wars								
EDGE 11-14 YEARS OLD	Elephant Soccer		That's Hilarious		Magic Show		Photo Hunt		Picture This		Gender Wars		GAGA Ball								
OCEANEER LAB 3-12 YEARS OLD	Friendship Bracelets		Charades		Stop The Boat		Games Galore		Get the Hook		4 Corners		Cartoon Corner								
	Anyone Can Cook				Piston Cup Challenge																
OCEANEER CLUB 3-12 YEARS OLD	Create A Picture Frame		Bingo		Coloring Corner		Camp Rocking Out!		Cartoon Corner												
	Magic Playfloor				Dance Party																
OUT AND ABOUT	Go Fetch																				

Symbol for activities that will be repeated during the cruise

YOUTH ACTIVITIES OPEN HOUSE

FOLD

Fold along the dotted lines and take me with you so you don't miss any of the fun!

FOLD

IN THE SPOTLIGHT SERIES

SOLVE IT! SERIES

JUMP! SERIES

CREATE & INVENT SERIES

CLUBHOUSE SERIES

STORYBOOK SERIES

TUESDAY, MARCH 5, 2013 - COSTA MAYA

BUENA VISTA THEATRE

DD DOLBY 3D **CC** - Open Captioning



10:00 a.m.
Run Time:
1 hr 40 min
Rating: G



1:45 p.m.
Run Time:
1 hr 24 min
Rating: PG



3:45 p.m.
Run Time:
1 hr 41 min
Rating: PG



5:45 & 8:15 p.m.
Run Time:
1 hr 24 min
Rating: PG



10:30 p.m.
Run Time:
2 hr 22 min
Rating: PG-13

Character Appearances

MICKEY MOUSE

Deck 4, Balcony
9:00 a.m., 3:00 p.m.
3:30 p.m. & 7:45 p.m.
Lobby Atrium (P)
4:45 p.m. & 10:00 p.m.

BUZZ LIGHTYEAR

Lobby Atrium (V)
5:00 p.m., 7:30 p.m. & 10:00 p.m.

PRINCESS TIANA

Deck 4, Balcony - 5:15 p.m.
Lobby Atrium (P) - 8:00 p.m.

MINNIE MOUSE

Deck 4, Balcony
9:30 a.m. & 7:15 p.m.
Lobby Atrium (P) - 9:30 p.m.

CINDERELLA

Lobby Atrium (P)
5:15 p.m. & 7:15 p.m.

TINKER BELL

Lobby Atrium (V)
9:30 a.m. & 10:30 a.m.

PHINEAS & FERB

Lobby Atrium (H)
5:30 p.m., 7:45 p.m. & 9:45 p.m.

PLUTO

Deck 4, Balcony - 10:00 a.m.

WOODY & JESSIE

Lobby Atrium (V)
5:30 p.m., 8:00 p.m. & 9:30 p.m.

GOOFY

Goofy's Sports Deck - 10:00 a.m.
Deck 4, Balcony - 10:00 p.m.

BELLE

Lobby Atrium (P) - 5:45 p.m.

STITCH

Deck 4, Balcony - 11:00 a.m.

DONALD DUCK

Deck 4, Balcony
5:45 p.m. & 9:30 p.m.

DISNEY FRIENDS

Lobby Atrium - 3:00 p.m.

PINOCCHIO

Deck 4, Balcony - 4:45 p.m.

(H) Hallway - (S) Starboard Side - (P) Port Side - (V) Vestibule

For details of daily Disney character appearances, refer to the character line in your Navigator Grid or the digital character board in the Lobby Atrium.

YOUTH ACTIVITIES THEMED EXPERIENCES

CLUBHOUSE SERIES focuses on movement and features content which appeals to younger children.

JUMP UP! SERIES includes large ground games & movement-oriented activities.

IN THE SPOTLIGHT SERIES focuses on children's stage presence with lots of activities and enthusiasm.

STORYBOOK SERIES is designed with a strong connection to the Disney classic stories.

CREATE & INVENT SERIES will have a tactile focus allowing children to create and admire their work.

SOLVE IT! SERIES are less active, but will challenge children with problem/solutions-based activities.

YOUTH ACTIVITIES OPEN HOUSE

A non-secured program with activities for families, adults and children of all ages to enjoy together.

SHIP DIRECTORY

YOUTH ACTIVITIES

DISNEY'S OCEANEER CLUB	DECK 5, MID	8:00 AM - 11:00 PM
DISNEY'S OCEANEER LAB	DECK 5, MID	9:00 AM - 12:00 MID
EDGE	DECK 13, MID	10:00 AM - 1:00 AM
VIBE	DECK 4, FWD	10:00 AM - 2:00 AM
IT'S A SMALL WORLD NURSERY	DECK 5, MID	8:00 AM - 11:30 PM

RECREATION

AQUADUCK	DECK 12, MID	9:00 AM - 10:00 PM
AQUALAB	DECK 12, AFT	1:00 PM - 6:00 PM
DONALD'S POOL	DECK 11, MID	6:00 AM - 12:00 MID
GOLF/SPORTS SIMULATORS	DECK 13, AFT	9:00 AM - 6:00 PM
GOOFY GOLF	DECK 13, AFT	8:00 AM - 10:00 PM
GOOFY'S SPORTS DECK	DECK 13, AFT	8:00 AM - 6:00 PM
MICKEY'S POOL	DECK 11, MID	6:00 AM - 11:00 PM
MICKEY'S SLIDE	DECK 11, MID	9:00 AM - 6:00 PM
MIDSHIP DETECTIVE AGENCY	DECK 2 & 5, MID	9:00 AM - 10:00 PM
NEMO'S REEF	DECK 11, MID	9:00 AM - 7:00 PM
PORT ADVENTURES DESK	DECK 5, MID	8:00 AM - 1:00 PM 7:00 PM - 8:30 PM
QUIET COVE POOL	DECK 11, FWD	6:00 AM - 12:00 MID
SATELLITE FALLS	DECK 13, FWD	6:00 AM - 6:00 PM
SENSES FITNESS CENTER	DECK 11, FWD	6:30 AM - 10:00 PM

GENERAL INFORMATION

ARR-CADE	DECK 11, AFT	24 HOURS
ADVENTURES BY DISNEY	DECK 4, MID	9:00 AM - 12:00 PM
DISNEY VACATION CLUB	DECK 4, MID	5:30 PM - 10:00 PM
FUTURE CRUISE SALES DESK	DECK 4, MID	9:00 AM - 10:00 AM 4:00 PM - 6:00 PM 7:30 PM - 10:00 PM
GUEST SERVICES	DECK 3, MID	24 HOURS
MEDICAL HEALTH CENTER	DECK 1, FWD	9:30 AM - 11:00 AM 4:30 PM - 7:00 PM
PORT & SHOPPING DESK	DECK 4, MID	7:30 PM - 8:30 PM
PRELUDES	DECK 3, FWD	5:45 PM - 6:30 PM 8:00 PM - 8:45 PM
SENSES SPA AND SALON	DECK 11, FWD	8:00 AM - 10:00 PM
SHUTTERS PHOTO GALLERY	DECK 4, MID	5:00 PM - 10:30 PM
SHUTTERS DIGITAL	DECK 4, MID	24 HOURS

SHOPPING

BIBBIDI BOBBIDI BOUTIQUE	DECK 5, MID	9:00 AM - 9:00 PM
MICKEY'S MAINSAIL	DECK 3, FWD	
QUACKS	DECK 11, MID	
SEA TREASURES	DECK 3, FWD	
VISTA GALLERY	DECK 4, MID	
WHITE CAPS	DECK 3, FWD	
WHOZITS & WHATZITS	DECK 11, MID	

DINNER MENU

Animator's Palate: Prince & Princess
Enchanted Garden: Prince & Princess
Royal Court: Prince & Princess
Dining Times: 5:45 p.m. & 8:15 p.m.

DRINK OF THE DAY

Key Lime Margarita (Alcoholic)
Cranberry No-Jito (Non Alcoholic)

WEATHER FORECAST

Tuesday: Cloudy
High: 68°F/20°C
Wednesday: Partly Cloudy
High: 78°F/26°C

Evening Attire: Cruise Casual

DINING & LOUNGES

BREAKFAST

CABANAS CONTINENTAL	DECK 11, AFT	6:30 AM - 7:00 AM
CABANAS	DECK 11, AFT	7:00 AM - 11:30 AM
ENCHANTED GARDEN	DECK 2, MID	7:30 AM - 10:30 AM
ROYAL COURT	DECK 3, MID	8:00 AM - 9:30 AM

LUNCH

CABANAS	DECK 11, AFT	11:30 AM - 2:15 PM
FILLMORE'S FAVORITES	DECK 11, MID	10:30 AM - 6:00 PM
LUIGI'S PIZZA	DECK 11, MID	10:30 AM - 6:00 PM
ROYAL COURT	DECK 3, MID	12:00 PM - 1:30 PM
TOW MATER'S GRILL	DECK 11, MID	10:30 AM - 11:00 PM

DINNER

ANIMATOR'S PALATE	DECK 3, AFT	5:45 PM & 8:15 PM
ENCHANTED GARDEN	DECK 2, MID	5:45 PM & 8:15 PM
ROYAL COURT	DECK 3, MID	5:45 PM & 8:15 PM
CABANAS TABLE SERVICE	DECK 11, AFT	6:30 PM - 8:30 PM
PALO (18+) (RESERVATIONS REQ. & NOM. FEE APPLIES)	DECK 12, AFT	6:00 PM - 8:30 PM
REMY (18+) (RESERVATIONS REQ. & NOM. FEE APPLIES)	DECK 12, AFT	6:00 PM - 8:30 PM

LATE NIGHT SNACKS

LA PIAZZA (18+)	DECK 4, AFT	10:45 PM - 11:45 PM
LUIGI'S PIZZA	DECK 11, MID	9:30 PM - 12:30 AM

ADDED FEATURES

BEVERAGE STATION	DECK 11, MID	24 HOURS
EYE SCREAM	DECK 11, MID	11:00 AM - 11:00 PM
ROOM SERVICE	DIAL 0	24 HOURS

ENTERTAINMENT - LOUNGES - BARS

Adults must be 21 and older to consume alcoholic beverages.

BON VOYAGE	DECK 3, MID	10:30 AM - 11:00 PM
COVE BAR (18+)	DECK 11, FWD	10:00 AM - 11:00 PM
COVE CAFE (18+)	DECK 11, FWD	7:00 AM - 12:00 MID
CURRENTS (18+)	DECK 13, FWD	10:00 AM - 11:00 PM
D LOUNGE	DECK 4, MID	SHOWTIMES
FROZONE TREATS	DECK 11, MID	10:00 AM - 10:00 PM
LA PIAZZA	DECK 4, AFT	4:30 PM - 12:00 MID
MERIDIAN (18+)	DECK 12, AFT	5:00 PM - 12:00 MID
O'GILLS PUB	DECK 4, AFT	4:00 PM - 12:00 MID
OOH LA LA (18+)	DECK 4, AFT	5:00 PM - 12:00 MID
OUTLOOK	DECK 14, MID	SUNSET TIMES
SKYLINE (18+)	DECK 4, AFT	5:00 PM - 12:00 MID
THE TUBE (18+)	DECK 4, AFT	10:00 PM - 2:00 AM
VISTA CAFE	DECK 4, MID	7:30 AM - 10:00 PM
WAVES	DECK 12, AFT	10:00 AM - 6:30 PM

Consumers who order raw or partially cooked, ready-to-eat food of animal origin, are hereby informed that the food is not sufficiently cooked to ensure its safety.

All Ashore: Approx. 8:30 a.m.
All Aboard: 12:30 a.m.

IMPORTANT INFORMATION

Please check your Port Adventure tour tickets for meeting times and locations. Visit the Port Adventures Deck 5, Midship, for any questions.

SHIP'S AGENT IN COSTA MAYA - IMPORTANT NUMBERS

Sr. Marco Souza
Carmichel, Coordinador General,
Aconsur, Mahahual, Q. Roo, México
Tel: 52 983 834 5674 or 521 9837005253

Fire/Security: 7-3001
Medical Emergency: 7-3000
Health Center: 7-1923