

PERSONAL NAVIGATOR



THURSDAY, DECEMBER 27, 2012

Sunrise: 6:54 a.m. Sunset: 5:24 p.m.

Evening Attire: Cruise Casual

All Ashore: Approx. 8:30 a.m.

All Aboard: 5:00 p.m.

Gangway: Deck 1, Midship, & Deck 1, Aft

Thursday: Sunny High: 68°F/20°C

Friday: Partly Sunny High: 70°F/21°C

DISNEY'S CASTAWAY CAY

Disney's Believe



Genie from Aladdin and many of Disney's most beloved magic makers take a father on a magical journey to show him that anything is possible if you just believe.

WALT DISNEY THEATRE
Decks 3 & 4 Forward
4:00, 6:15 & 8:30 P.M.



Assistance available at the entrance to the Walt Disney Theatre 30 minutes prior to show time.



Disney's Castaway Cay

Reserved exclusively for Guests on Disney Cruise Line Bahamian and Caribbean cruise vacations, Castaway Cay is Disney's private port-of-call paradise. On this island, enjoy tropical leisure activities, such as snorkeling, boating, swimming and sunbathing.

Friendly Reminders

- Serenity Bay is reserved for Guests 18 and older.
- Your Key To The World Card will need to be used for all transactions on Disney's Castaway Cay except for the Post Office.
- A limited number of all-terrain wheelchairs are available across from Scuttle's Cove.
- For your convenience, beach towels are available as you leave the ship; please return them at the gangway at the end of your day.
- Due to our commitment to the environment, we ask that seashells, coral and other natural treasures be left undisturbed at Disney's Castaway Cay for all to enjoy.

Debark Talk Broadcast

Your Cruise Director, Natalie, presents important information, including U.S. Customs and Border Protection procedures. Tune in to Channel 5 of your stateroom TV. Please place your luggage outside your stateroom between 8:30 - 10:30 p.m.

Thank you in advance for completing your comment card.

SEA YA' REAL SOON!

Mickey and some of his Disney friends, invite you to join them in the ship's Atrium. You won't want to miss this very special farewell meet and greet.

Bring your cameras!

10:15 p.m.
Lobby Atrium,
Deck 3, Midship

Don't Miss:

Captain's Signing

White Caps, Deck 3, Forward - 7:15 p.m.

Come and have your Disney Dream merchandise signed by the Master of the Disney Dream, Captain Guus.

Adult Cabaret: Knight Magic

Evolution (18+), Deck 4, Aft - 10:45 p.m.

Featuring the Magic & Illusion of Kyle Knight & Mistie: Knight Magic, as they entertain you in this adult cabaret-style show.

Cruise Staff Farewell

Evolution (18+), Deck 4, Aft - 11:15 p.m.

Join your Club Host, Nick, and the Cruise Staff team to see our version of the funniest skit on the high seas, "If I Were Not Upon The Sea."

RELIGIOUS SERVICES

Daily Mass with Fr. George Piggford
Buena Vista Theatre, Decks 4 & 5, Midship - 8:00 a.m.



Visit The Future Cruise Desk Early Today

Please visit the Future Cruise Desk, Deck 4, Midship, as early as possible today. The last day of the cruise tends to get busy in the evening, and we want to be sure you have the opportunity to save 10% on your next cruise, receive up to a \$200 onboard credit, and pay a reduced deposit! Tune to Channel 8 for details.

DINNER MENU

Animator's Palate: Sea Ya' Real Soon
Enchanted Garden: Sea Ya' Real Soon
Royal Palace: Sea Ya' Real Soon

DRINK OF THE DAY

Bahama Mama (Alcoholic)
Princess Delight (Non Alcoholic)

IMPORTANT NUMBERS

Fire/Security: 7-3001
Medical Emergency: 7-3000
Health Center: 7-1923

FAMILY ACTIVITY HIGHLIGHTS



RUN DISNEY: CASTAWAY CAY 5K

Meet in Evolution (12+), Deck 4, Aft - 8:15 a.m.
Runners meet in Evolution, Deck 4, Aft, at 8:15 a.m. We will depart the ship at 8:30 a.m., and make our way to the Bike Rentals where the run will begin. Come cheer on your friends and family as they cross the finish line!

ISLAND POWER WALK

Meet at the Post Office, Castaway Cay - 9:30 a.m.
Join your Cruise Staff for a brisk walk around the island. Meet outside, by the Post Office. Meet time is 9:30 a.m. Walk leaves promptly at 9:45 a.m.

CRAB RACES

Castaway Cay, Gazebo 1, (Near Cookies BBQ) - 11:45 a.m.
Watch some local sea creatures make a break for the finish line.

BASKETBALL FREE THROW

In Da Shade Games, Castaway Cay - 12:00 p.m.
Join your Cruise Staff in this fun tournament and see how many you can sink in 30 seconds!

FAMILY WHALE DIG

Monstro Point, Castaway Cay - 1:00 p.m.
Our island paleontologist leads us in the excavation of a giant whale skeleton and other fossilized treasures!

MAKING OF THE DREAM

Evolution, Deck 4, Aft - 2:30 p.m.
Learn about the latest and greatest innovations for the Disney Dream in this entertaining behind-the-scenes program.

OFFICER PIN TRADING

Preludes, Deck 3, Midship - 7:30 p.m.
Your chance to come and trade pins with the officers of the Disney Dream.

FAMILY DANCE PARTY

Evolution, Deck 4, Aft - 7:30 p.m.
Grab your dancing shoes and hit the dance floor as DJ Marius spins the tunes.



DISNEY DISCO

D Lounge, Deck 4, Midship - 10:15 p.m.
Join your Cruise Staff and dance along to some of your favorite tunes.

ADULT ACTIVITY HIGHLIGHTS



SENSES SPA SEMINARS

Body Sculpt Boot Camp (Fee Applies) - Basketball Court, 7:30 a.m.
Wake Up & Stretch - Senses Fitness Center, 8:00 a.m.
Yoga on the Beach - Serenity Bay, 10:30 a.m.
Seminar: Burn Fat Faster - Senses Fitness Center, 3:00 p.m.
Seminar: Acupuncture and Chinese Herbs - Senses Fitness Center, 4:00 p.m.
Good Feet Seminar: Relieving Back Pain - Senses Fitness Center, 4:30 p.m.
Total Body Conditioning - Senses Fitness Center, 5:30 p.m.

BEVERAGE SEMINARS

Tequila & Margarita Tasting - Skyline, 5:00 p.m.
Please make reservations for tastings at Guest Services for a nominal fee. Beverage seminars are only for Guests 21 and over.

CLUB
18*21

VOLLEYBALL

Sports Beach, Castaway Cay, 11:45 a.m.

BASKETBALL CHALLENGE

In Da Shade Games, Castaway Cay, 1:00 p.m.

90'S MUSIC TRIVIA

687 Pub, Deck 4, Aft, 5:00 p.m.

FAREWELL

Evolution, Deck 4, Aft, 10:15 p.m.

50 MORE MOVIE QUOTES TRIVIA

687 Pub, Deck 4, Aft - 3:00 p.m.

"Nobody puts baby in the corner"...know the movie? Then join your Cruise Staff as they test your movie quote knowledge.

DISNEY VACATION CLUB® GROUP PRESENTATION

Evolution, Deck 4, Aft - 4:30 p.m.

Want to learn more about taking magical vacations year after year? Stop by our interactive group presentation to find out more information from a Disney Vacation Club representative.

LET THE NIGHT EVOLVE WITH DJ MARIUS

Evolution, Deck 4, Aft - 11:30 p.m.

Evolution Nightclub comes alive with our Cruise Staff DJ Marius!



BINGO

FINAL
JACKPOT BINGO

Join your Cruise staff team for our FINAL Session of Bingo! Cash Prize games and the Snowball Jackpot continues to grow and is Guaranteed to be won today!

*D Lounge
Deck 4, Midship
Pre Sales - 4:00 p.m.
Game Starts - 4:30 p.m.*

YOUTH ACTIVITIES HIGHLIGHTS

DINE & PLAY

A convenience for families dining at 8:15 p.m., our Youth Activities Counselors will be available at 9:15 p.m. at the entrance of Royal Palace, Enchanted Garden and Animator's Palate dining rooms to bring registered children to join the fun in the Youth Activity areas.



Deck 5 Midship (7-5864) 9:00 a.m. - 12:00 a.m.

OPEN HOUSE

8:00 - 9:00 a.m.

Your chance to see our toddler space, It's A Small World Nursery.



Deck 5 Midship (7-1440) 5:00 p.m. - 12:00 Mid.
(3 - 12 years old)

LITTLE EINSTEINS

7:45 p.m.

Your junior cruisers will have the time of their lives with this program inspired by their favorite show with fun activities guaranteed to make them feel like a little genius!

PLUTO'S PJ PARTY

8:45 p.m.

Bring the little ones in their pajamas but there will be anything but sleep when Pluto and friends host the ultimate slumber party!



Deck 5 Midship (7-1445) 1:00 p.m. - 12:00 Mid.
(3 - 12 years old)

PISTON CUP CHALLENGE

6:15 p.m.

It's Dinoco time and you're part of the pit crew! Design your own race car and see if you've got what it takes to end up in the Winner's Circle!

ANYONE CAN COOK

8:45 p.m.

Anyone can cook as we work together to create some of our favorite treats.



Deck 13 Midship (7-9743) 3:00 p.m. - 12:00 Mid.
(11 - 14 years old)

GHOST VOYAGERS

9:15 p.m.

The ship has come upon some mysterious waters and strange things are afoot. Join a team of paranormal experts to help investigate the area and track down any evidence of ghostly beings on the ship.

FAREWELL DANCE PARTY

11:00 p.m.

Come say goodbye to your new found friends, and dance the night away.



Entrance on Deck 4 Forward (7-9417)
4:00 p.m. - 1:00 a.m.
(14 - 17 years old)

THAT'S HILARIOUS

7:30 p.m.

Ever wanted to show off your comedy skills? Then be a part of the cast for the crazy improv show "That's Hilarious"

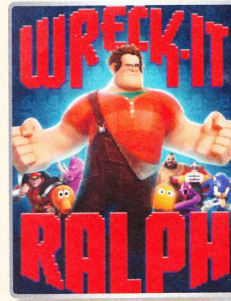
ZOMBIFIED PREMIERE

11:00 p.m.

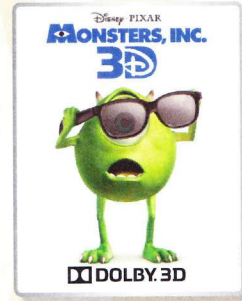
Join the Producer and Jessie to watch the preview of the final version of the film and join us for a celebration Party.

BUENA VISTA THEATRE

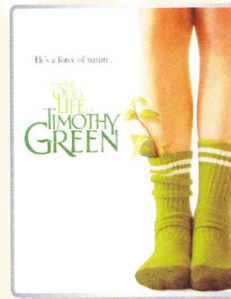
Today's Movies



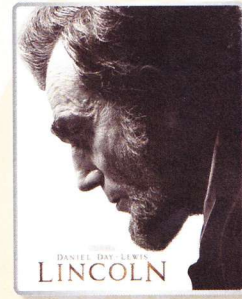
8:45 a.m. - 2D Version **PG**
3:15 p.m. - 2D Version
5:30 p.m. & 8:15 p.m. - **DOLBY.3D**
Run Time: 1 hr 51 mins
Rating: PG



11:00 a.m.
Run Time: 1 hr 32 mins
Rating: G



1:00 p.m. - **PG**
Run Time: 1 hr 49 mins
Rating: PG



10:30 p.m.
Run Time: 2 hrs 32 mins
Rating: PG-13

MOVIE CHALLENGE POOLSIDE

Come on out to watch all your favorite movie clips and just maybe your team will win the opportunity to choose the movie played by the pool today!

**Deck Stage,
Deck 11, Midship
3:00 p.m.**

Repeat Show!



ADULT CABARET

Featuring the Magic & Illusion of Kyle Knight & Mistie: Knight Magic, as they entertain you in this adult cabaret-style show.

**Evolution (18+), Deck 4, Aft
10:45 p.m.**

YOUTH ACTIVITIES OPEN HOUSE

Open House is an opportunity for all to come and participate in a variety of exciting activities and free time in the Oceaneer Club, Lab, Edge & Vibe throughout the cruise. During these times secured programming will still be offered in the other venue for those looking to check their children into care.

MORE TO ENJOY WHILE ONBOARD

EXPRESS WALK-OFF

Guests now have the option to take your luggage off the ship at your leisure once the ship has been cleared by the local authorities. You do not need to wait for your luggage to enter the terminal and there is no need to claim it inside the terminal building. Please note that no assistance with luggage is provided for this option.

DISNEY VACATION CLUB® GROUP PREVIEW

Want to learn more about taking magical vacations year after year? Please see a Disney Vacation Club representative on Deck 4, Midship, or call 7-2805 from your stateroom phone for more information about our interactive group presentation.

PROTECT YOUR PURCHASES

Don't forget to activate your 60 day buyer's guarantee form for your purchases in Nassau. It's free and confidential. Pick one up at the Shopping Desk, Deck 4, Midship.



SALON TASTER SPECIAL

Choose from scalp massage, European facial, hand treatment, sunglow make-over, hair treatment, eye-collagen treatment, foot & ankle massage and neck & shoulder massage.

Three for \$99, five for \$119, and eight for \$139.

*Senses Spa & Salon, Deck 11, Forward
Ext. 7-1465*

TODAY'S SHOPPING SPECIAL

Sophia Fiori are industry leaders in vivid colored Diamonds, and more specifically Caribbean blue Diamonds. Ask our trunk show representatives for the special Holiday Sale

*White Caps,
Deck 3, Forward*



PORTRAITS TONIGHT!

Grand Staircase – Groups accommodated

*Lobby Atrium, Deck 3, Midship
5:00 p.m. – 6:30 p.m.*

Create a personal storybook of your cruise to share with family and friends. Photobook orders close at 10:00 p.m.

*Please note that photos are available for viewing on our interactive photo kiosks approximately three hours after being taken and are only available for purchase during this cruise.



Welcome back to Disney's Island Paradise Castaway Cay. Today is the day to relax in an inner tube, snorkel in the Caribbean blue, get up-close and personal to real life stingrays or fly high in the sky on a parasail excursion during a breathtaking aerial adventure.

Visit Marge's Barges or one of the rental locations and our friendly team will assist in making any last minute bookings.

PORT ADVENTURES MEETING TIMES AND LOCATIONS

As per ticket	Castaway Ray's Stingray Adventure	Gil's Fins and Boats
As per ticket	Glass Bottom Boat	Marge's Barges
As per ticket	Castaway Cay Bottom Fishing	Marge's Barges
As per ticket	Nature Walk and Kayaking	Marge's Barges
As per ticket	Parasailing	Marge's Barges
9:00 a.m.	Teen Wild Side	Vibe
As per ticket	Single & Double Watercraft	Boat Beach

CASTAWAY CAY ISLAND RENTALS

Bicycles	9:00 a.m. - 4:00 p.m.	Bike Rentals
Boats	9:00 a.m. - 4:00 p.m.	Boat Beach
Snorkeling Gear	9:00 a.m. - 3:30 p.m.	Gil's Fins and Boats / Flippers and Floats
Float	9:00 a.m. - 3:30 p.m.	Gil's Fins and Boats / Flippers and Floats
Getaway Package	9:00 a.m. - 3:30 p.m.	Gil's Fins and Boats / Flippers and Floats

Reservations can be made on the island at each rental location. Castaway Ray's walk up reservations can be made at Gil's Fins and Boats on Family Beach.

SHOPPING

CAPTAIN'S SIGNING

Come to White Caps at 7:15 p.m. and have your Disney Dream merchandise signed by the Master of the Disney Dream, Captain Guus. Stunning replica ships are available in Sea Treasures. Deck 3, Forward.

MAROONED IN PARADISE

Welcome to Disney's Castaway Cay! She Sells Seashells And Everything Else and Buy The Seashore are your island memory destinations. Get your Run Disney Castaway Cay 5K tee exclusively at Buy The Seashore. Also exclusive to the island, when you spend \$40 or more, purchase a Castaway Cay beach bag for \$14.95, while supplies last.

SOPHIA FIORI GUESS THE CARAT WEIGHT

Enter this fun competition right now! Whoever guesses closest wins a 8 carat Midnight Sapphire! Winners Draw today 8:00 pm. Must be present to win. White Caps, Deck 3, Forward. This offer is not affiliated with Disney Cruise Line.

GOING ONCE, GOING TWICE, YOURS!

The silent auction closes this evening at 6:00 p.m. and you want to make sure your bid is in on your favorite piece. Be the proud owner of fantastic Disney art that will always remind you of your time with us onboard the Disney Dream. Explore all that the Vista Gallery has to offer with beautiful paintings of your favorite characters and films. Discounted shipping available on two or more pieces of art. Vista Gallery, Deck 4, Midship.

LAST CHANCE OPPORTUNITIES!

Available on purchases in the merchandise locations onboard, while supplies last. With every \$30.00 spent, you can purchase a Disney Cruise Line watch for \$14.95. With every \$25.00 spent, you can purchase a Disney Plush Ship for \$24.95.

TAX AND DUTY FREE

Tax and duty free shopping right here onboard! Buy liquor onboard and we will package it safely for your journey home. White Caps, Deck 3, Forward.

Due to port regulations, when the ship is docked, the stores will remain closed.

DD 187 12 27 2012 ©DISNEY

IMPORTANT INFORMATION

Security Notice

All Guests (including children) who wish to disembark the ship are required to present their Key to the World card at the gangway. A photo ID is also required for those Guests who are 18 years of age or older. Guests under the age of 18 are required to have a Parent, Guardian or other responsible adult sign an authorization form at the time it is given out if they wish to go ashore unaccompanied. Authorization forms are available at the gangways and Guest Services.

Please Note:

Please remember to use plenty of sunscreen and mosquito repellent when venturing ashore.

Cold and Flu Reminder

Please wash hands frequently and thoroughly, particularly before meals. Contact the Health Center by dialing 7-1923, should anyone in your party become ill.

Corridor Quiet Hours

As a courtesy to all our Guests, please recognize quiet hallway hours from 10:00 p.m. til 8:00 a.m.

Inclement Weather

For the safety of all Guests, outdoor events may be changed due to unforeseen weather conditions.

Environmental Message

With Disney's commitment to the Environment, please refrain from throwing anything over the Ship's side. Thank you!

No Reserved Seats Policy

As a courtesy to all our Guests, we kindly advise that the saving of seats is not permitted in the Walt Disney Theatre, and the saving of the sun loungers is not permitted on Deck 11, 12, and 13. Items left unattended will be returned to lost and found at Guest Services, Deck 3 Midship.

Smoking

For the comfort of our guests the following areas are designated as Smoking areas:
-Deck 13, Forward, port side, by "Currents"
-Deck 12, Aft, port side outdoor area that is accessible through the Meridian Lounge
-Deck 4, Aft, port side from 6:00 p.m. to 6:00 a.m. only (all of Deck 4 is no smoking from 6:00 a.m. to 6:00 p.m.)
-Smoking is permitted on stateroom verandahs. Smoking is prohibited inside all guest staterooms. Guests found smoking in their staterooms will be charged a \$250 stateroom recovery fee.

Walt Disney Theatre

Theatrical performances may use artificial fog, strobe lights, pyrotechnics and other special effects. For the safety of our performers and the comfort of those around you, the use of any photography, video recording device or any electronic equipment is prohibited.

Verandah Safety

Please do not leave any combustible materials on your balcony when not present in your stateroom for safety reasons.

DD/NB/SD/187/12.22.2012/MJM/C/DISNEY