

# PERSONAL NAVIGATOR



Sunrise: 6:56 a.m. Sunset: 5:26 p.m.

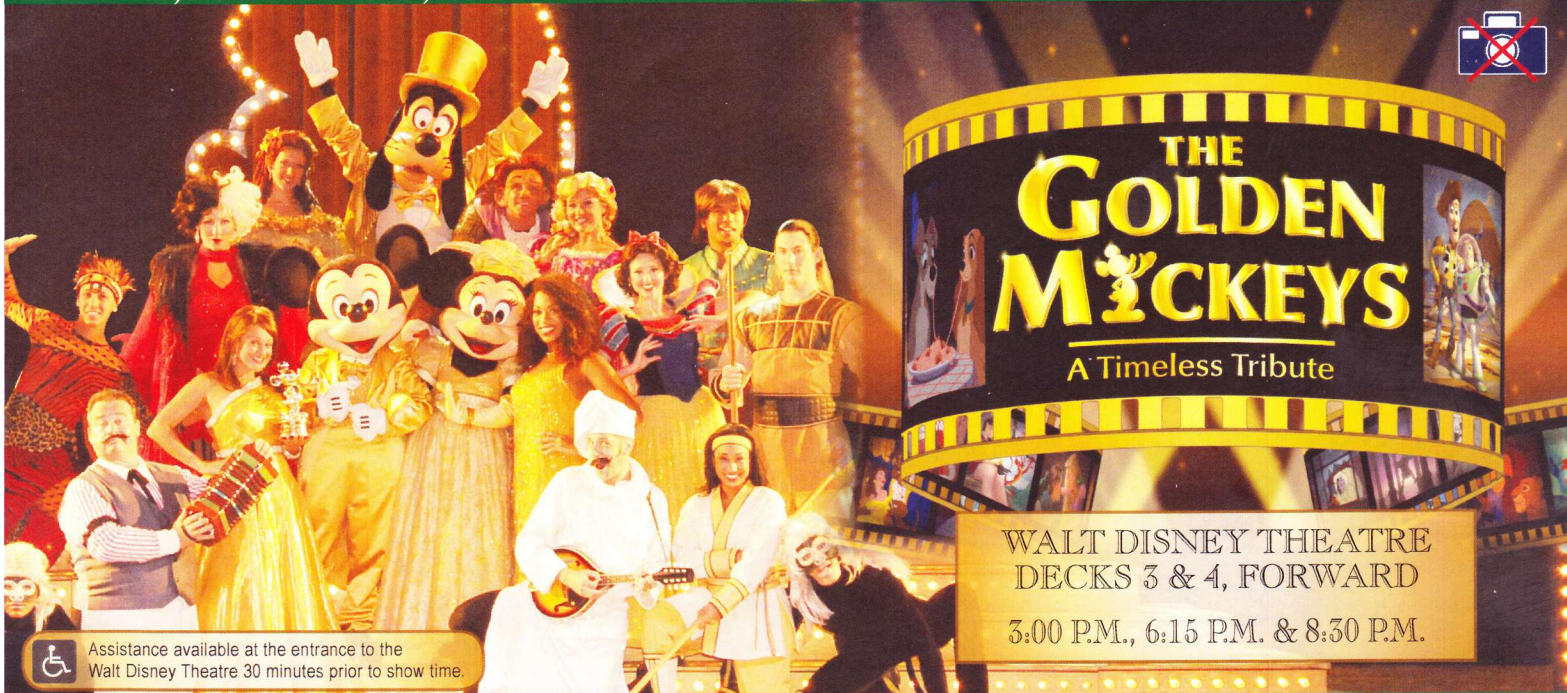
Evening Attire: Formal

Tuesday: Partly Cloudy High: 75°F/24°C

Wednesday: Partly Sunny High: 75°F/24°C

TUESDAY, DECEMBER 25, 2012

DAY AT SEA



## THE GOLDEN MICKKEYS

A Timeless Tribute

WALT DISNEY THEATRE  
DECKS 3 & 4, FORWARD

3:00 P.M., 6:15 P.M. & 8:30 P.M.



Assistance available at the entrance to the Walt Disney Theatre 30 minutes prior to show time.

CHRISTMAS DAY

## MERRY CHRISTMAS

**SANTA CLAUS VISITS THE DISNEY DREAM**  
*Lobby Atrium, Deck 3, Midship, 8:00 - 11:30 a.m.*

**HOLIDAY TREATS, DRINKS & FACE PAINTING**  
*Lobby Atrium, Deck 3, Midship, 8:00 - 11:30 a.m.*

**DISNEY CHRISTMAS DAY PARADE**  
*Funnel Vision, Deck 11, Midship, 10:00 a.m.*

**CHILDRENS CAROLING**  
*Lobby Atrium, Deck 3, Midship, 2:45 p.m.*

**PHOTOGRAPHS WITH CAPTAIN GUUS**  
*Lobby Atrium, Deck 3, Midship, 7:30 p.m. - 8:15 p.m.*

## RELIGIOUS SERVICES

**CHRISTMAS DAY CATHOLIC MASS**  
*8:00 a.m., Walt Disney Theatre, Decks 3 & 4 Midship*

**INTERDENOMINATIONAL SERVICE**  
*9:30 a.m., Walt Disney Theatre, Decks 3 & 4 Midship*



## GAME SHOW

Bring the entire family and test your Disney knowledge in this interactive, family game show.

7:30 p.m.  
D Lounge,  
Deck 4, Midship

## Don't Miss:

### Anyone Can Cook

*D Lounge, Deck 4, Midship*  
11:00 a.m. - Apple Strudel (Families)  
3:00 p.m. - Lobster Ravioli (Adults - 18+)

From our galley to yours; join our chefs as they show you how to prepare some delicious dishes.

### Jack-Jack's Incredible Diaper Dash

*Lobby Atrium, Deck 3, Midship - 11:30 a.m.*

Calling all baby cruisers! The Disney Dream's babies take to the mat to see who's the fastest crawler on the seven seas!

### Captain's Signing

*White Caps, Deck 3, Forward - 12:15 p.m.*

Come and have your Disney Dream merchandise signed by the Master of the Disney Dream, Captain Guus.

### Match Your Mate

*Evolution (18+), Deck 4, Aft - 10:30 p.m.*

It's time to play everyone's favorite couples game show Match Your Mate!

## Plan Your Next Cruise



Please visit the Future Cruise Desk, Deck 4, Midship, as early as possible today. We want to be sure you have the opportunity to save 10% on your next cruise, receive up to a \$200 onboard credit, and pay a reduced deposit! Tune to Channel 8 for details.

## DINNER MENU

Animator's Palate: Christmas Dinner  
Enchanted Garden: Christmas Dinner  
Royal Palace: Christmas Dinner

## DRINK OF THE DAY

Caribbean Christmas (Alcoholic)  
Mango Smoothie (Non Alcoholic)

## IMPORTANT NUMBERS

Fire/Security: 7-3001  
Medical Emergency: 7-3000  
Health Center: 7-1923



# FAMILY ACTIVITY HIGHLIGHTS



## WAKE UP WITH DISNEY JUNIOR

*D Lounge, Deck 4, Midship - 9:00 a.m.*

What happens when you experience unlimited fun with your favorite Disney Junior shows? An exciting dance party designed especially for pre-schoolers ages seven and under.

## DISNEY VACATION CLUB® GROUP PRESENTATION

*Evolution, Deck 4, Aft - 12:30 p.m.*

Want to learn more about taking magical vacations year after year? Stop by our interactive group presentation to find out more information from a Disney Vacation Club representative.

## DISNEY ANIMATION: CREATING A CHARACTER

*D Lounge, Deck 4, Midship - 1:00 p.m.*

Go behind the scenes at Walt Disney Animation Studios and learn the principles that make animation work. Try your hand at creating your own easy animation demonstration in this fun and fascinating enrichment program.

## ANIMAL TOWEL FOLDING

*D Lounge, Deck 4, Midship - 2:00 p.m.*

Join a member of our Housekeeping team as they show you the secrets to transforming an ordinary bath towel into a cute animal!

## MICKEY 200

*Evolution, Deck 4, Aft - 3:15 p.m.*

Does your family have what it takes? Can a carrot and a potato be turned into the fastest hot-rod on the seven seas? Find out in the Mickey 200! Limited availability.

## FAMILY SUPERSTAR KARAOKE

*D Lounge, Deck 4, Midship - 9:30 & 11:15 p.m.*

Calling all singing superstars! Join your Cruise Staff in D Lounge and sing along to your favorite song!

## FAMILY DREAM QUEST

*D Lounge, Deck 4, Midship - 10:15 p.m.*

Enjoy the wildest and wackiest scavenger team event on the seven seas!

# ADULT ACTIVITY HIGHLIGHTS

## SENSES SPA SEMINARS

*Body Sculpt Boot Camp (Fee Applies) - Goofy's Sports Deck, 7:30 a.m.*

*Wake Up & Stretch - Senses Fitness Center, 8:00 a.m.*

*Pathway to Yoga - Senses Fitness Center, 9:00 a.m.*

*Detox for Health & Weight Loss - Senses Spa & Salon, 10:00 a.m.*

*Seminar: Acupuncture for Health & Well Being - Senses Spa & Salon, 11:00 a.m.*

*Seminar: Walking in Comfort - Senses Spa & Salon, 12:00 p.m.*

*Seminar: How to Increase Your Metabolism - Senses Spa & Salon, 2:00 p.m.*

*Group Cycling (Sign Up Required) - Senses Fitness Center, 4:00 p.m.*



## BEVERAGE SEMINARS AT SEA

*Champagne Tasting - Pink, 12:15 p.m.*

*Martini Tasting - Meridian, 4:00 p.m.*

*Whiskey Tasting - Meridian, 9:15 p.m.*

*Wine Tasting - Pink, 1:30 p.m.*

*Tequila Margarita Tasting - Evolution, 5:00 p.m.*

Please make reservations for tastings at Guest Services for a nominal fee. Tastings are only for Guests 21 and older.

## LUNCH

*Royal Palace, Deck 2, Midship - 12:30 p.m.*

## BASKETBALL

*Goofy's Sports Deck, Deck 13, Aft - 4:30 p.m.*

## MIXER

*Evolution, Deck 4, Aft - 10:00 p.m.*



## SINGLE'S LUNCH

*Royal Palace, Deck 3, Midship - 12:15 p.m.*

Single, single parent, or travelling alone? Join your Cruise Staff for an informal lunch in Royal Palace.

## MAKING OF THE DREAM

*Evolution, Deck 4, Aft - 2:00 p.m.*

Explore the origins of Disney Cruise Line - and the latest and greatest innovations conjured especially for the Disney Dream, in this fascinating and entertaining behind-the-scenes program.



## ROADHOUSE FOLLOWED BY EVOLUTION NIGHTCLUB WITH GUEST DJ AUTOMATIC

*Evolution, Deck 4, Aft - 11:15 p.m.*

Join your Club Host, Nick, and the Cruise Staff team, as they round up the greatest classic rock and urban country hits. With a special appearance by the Evolution Dancers.



# \$5,000 MEGA JACKPOT BINGO

**D Lounge,  
Deck 4, Midship  
Card Sales - 4:00 p.m.**

**Game Starts - 4:15 p.m.**

Join your Cruise Staff for four CASH prize games. Cover your card in 46 numbers or less, and \$5,000 could be yours. If not, we continue to play for the highest cash prize of the session!





# YOUTH ACTIVITIES HIGHLIGHTS

## DINE & PLAY

A convenience for families dining at 8:15 p.m., our Youth Activities Counselors will be available at 9:15 p.m. at the entrance of Royal Palace, Enchanted Garden and Animator's Palate dining rooms to bring registered children to join the fun in the Youth Activity areas.



**Deck 5 Midship (7-5864)** 9:00 a.m. - 12:00 Mid.

## OPEN HOUSE

8:00 - 9:00 a.m.

Your chance to see our toddler space, It's A Small World Nursery.



**Deck 5 Midship (7-1440)** 9:00 a.m. - 11:30 p.m.  
(3 - 12 years old)

## TOY STORY BOOT CAMP

2:45 p.m.

Ten-hut! The Green Army Men are holding a boot camp and your junior cruiser is invited to join in the fun.

## CAMP ROCKING OUT

7:45 p.m.

Discover your inner Jonas Brother and relive the fun of the Camp Rock films. Singing, dancing, tents - it's more fun than you ever thought was possible!



**Deck 5 Midship (7-1445)** 9:00 a.m. - 1:00 a.m.  
(3 - 12 years old)

## MONSTERS INC. OPEN "MIKE" NIGHT

6:00 P.M.

The Monsters of Monstropolis have all lost their voices and it's up to YOU to save the day. Participate in Mike Wazowski's Comedy School and a special show to help collect enough laughs to power up the city.

## PISTON CUP CHALLENGE

10:30 p.m.

It's Dinoco time and you're part of the pit crew! Design your own race car and see if you've got what it takes to end up in the Winner's Circle!



**Deck 13 Midship (7-9743)** 10:00 a.m. - 1:00 a.m.  
(11 - 14 years old)

## DREAM FACTOR

2:00 p.m.

Time to see if you are up to the challenge for one of the toughest competitions onboard. Prepare yourself for "Dream Factor!"

## THAT'S HILARIOUS

8:45 p.m.

Ever wanted to show off your comedy skills? Then be a part of the cast for the crazy improv show "That's Hilarious" and put on a live show.



**Entrance on Deck 4 Forward (7-9417)**  
10:00 a.m. - 1:00 a.m.  
(14 - 17 years old)

## ZOMBIFIED

12:00 p.m.

A big movie producer is looking for a few good zombies to help him film the finale to his latest masterpiece, *Zombified*.

## GHOST VOYAGERS

10:30 p.m.

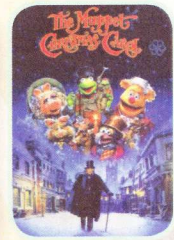
The ship has come upon some mysterious waters and strange things are afoot. Join a team of paranormal experts to help investigate the area and track down any evidence of ghostly beings on the ship.

# BUENA VISTA THEATRE

## Today's Movies



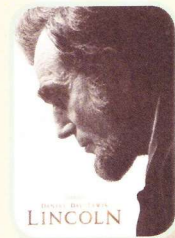
8:30 a.m.  
Run Time: 1 hr 03 min  
Rated: G



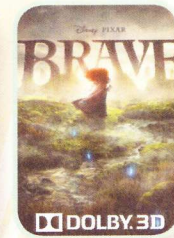
10:00 a.m.  
Run Time: 1 hr 28 min  
Rated: G



12:15 p.m.  
Run Time: 1 hr 37 min  
Rated: G



2:30 p.m.  
Run Time: 2 hr 32 min  
Rated: PG-13



5:30 & 8:15 p.m.  
Run Time: 1 hr 45 min  
Rated: PG



10:30 p.m.  
Run Time: 1 hr 32 min  
Rated: G



## D TUNES FAM JAM

Find out what's **HOT** at this fun dance party, featuring great Disney music, family dances, and a chance to win awesome prizes!

**D Lounge,  
Deck 4, Midship  
10:45 p.m.**



## GAME SHOW

It's time to play everyone's favorite couples game show **Match Your Mate!**

**Evolution (18+),  
Deck 4, Aft  
10:30 p.m.**

## YOUTH ACTIVITIES OPEN HOUSE

Open House is an opportunity for all to come and participate in a variety of exciting activities and free time in the Oceaneer Club, Lab, Edge and Vibe throughout the cruise. During these times secured programming will still be offered in the other venue for those looking to check their children into care.



# MORE TO ENJOY WHILE ONBOARD



## PLAN YOUR NEXT CRUISE

Please visit the Future Cruise Desk, Deck 4, Midship, as early as possible today. We want to be sure you have the opportunity to save 10% on your next cruise, receive up to a \$200 onboard credit, and pay a reduced deposit! Tune to Channel 8 for details.



## DISNEY VACATION CLUB® GROUP PREVIEW

Want to learn more about taking magical vacations year after year? Please see a Disney Vacation Club representative on Deck 4, Midship, or call 7-2805 from your stateroom phone for more information about our interactive group presentation.



## BUYERS GUARANTEE FORM

Pick up your Buyer's Guarantee form at the Shopping Ashore Desk. Fill this form out and leave it at the desk to activate your Free 60 Day Guarantee.



## MIDSHIP DETECTIVE AGENCY

Use your detective know-how and our special detective "badge" to search the ship and catch your criminal! Deck 5, Midship Kiosks.

## FINE DINING RESERVATIONS

Treat yourself to the ultimate culinary experience at sea. At Remy and Palo, the enchantment of sea meets with elegance for a once-in-a-lifetime dining experience. Service/Cover charges will apply, please call 7-9734 for reservations to secure the last available spots.

## SURF @ SEA

\$0.75 per minute, or save money by buying blocks of time. \$27.50 for 50 minutes, \$40 for 100 minutes and \$75 for 250 minutes. Wireless information sheets are available at Guest Services, Deck 3, Midship. **Please note: Due to satellite connectivity, onboard internet service will be noticeably slower than you may be accustomed to and may at times be interrupted or unavailable.**

## ON DEMAND TV

Watch Disney movies, Hollywood features, ABC Shows, and even captioned content, plus much more "On Demand" for FREE in the comfort of your stateroom! Bookmark your movie and come back to watch it later. Press MENU on your stateroom television remote control and follow the prompts.

## SHOPPING

### CAPTAIN'S SIGNING

Come to White Caps at 12:15 p.m. and have your Disney Dream merchandise signed by the Master of the Disney Dream, Captain Guus. Stunning replica ships are available in Sea Treasures, Deck 3, Forward.

### DOONEY & BOURKE ON THE DREAM

Disney Cruise Line has inspired these quality bags once again. Our nautical and four ships collections will be a great accessory to bring to your Disney Cruise Line memories. White Caps, Deck 3 Forward

### A PICTURE PAINTS A THOUSAND WORDS

Re-live your cruise experience for years to come with a piece of exclusive Disney Cruise Line art. The gallery is your home to art by famous Disney artists like Thomas Kinkade and Britto. Celebrate Holidays with our newly arrived Mickey Santa figurine. Discounted shipping available on two or more pieces of art. Vista Gallery, Deck 4, Midship.

### DISNEY CRUISE LINE FALL FASHIONS

Celebrate a day at sea in style by visiting Sea Treasures to experience our newly released fall line. Nautical-inspired attire for the whole family that will showcase your unique personality with many looks for everyone. Sea Treasures, Deck 3, Forward.

### POOLSIDE SHOPPING

Whozits & Whatzits and Quacks, Starboard Side are the shopping locations for all of your poolside needs. Four Ships and Itinerary tees available at Quacks. Aquaduck merchandise and name branded sunglasses available at Whozits & Whatzits, Deck 11, Midship.

### GREAT GIFT IDEAS

Available on purchases in the merchandise locations onboard, while supplies last. With every \$30.00 spent, you can purchase a Disney Cruise Line watch for \$14.95. With every \$25.00 spent, you can purchase a Disney Plush Ship for \$24.95.

### MEMORIES FROM ACROSS THE MAP

Come try on one of our quality designer fragrances from all over the world! Chanel, Gucci, Jimmy Choo, and many more for men and women. White Caps, Deck 3, Forward.



## OXYDERMIE FACIAL

It is collagen boosting, oxygen infusing and removes dead skin. This facial targets fine lines & wrinkles, scars, sun damage, age spots and blemishes and works well on every skin type.

**Senses Spa, Deck 11, Forward, Ext 7-1465**

## TODAY'S SHOPPING SPECIAL

Sophia Fiori are industry leaders in vivid colored Diamonds, and more specifically Caribbean blue Diamonds. Ask our trunk show representatives for the special Holiday Sale

**White Caps,  
Deck 3, Forward**

*Sophia Fiori*



## PROFESSIONAL PORTRAITS

Night Ship & Lifestyle – Six Guests maximum  
Grand Staircase – Groups accommodated

**5:15 p.m. - 6:00 p.m.**

**7:15 p.m. - 8:30 p.m.**

**9:30 p.m. - 10:30 p.m.**

*\*Please note that photos are available for viewing on our interactive photo kiosks approximately five hours after being taken and are only available for purchase during this cruise.*

## IMPORTANT INFORMATION

### Security Notice

All Guests (including children) who wish to disembark the ship are required to present their Key to the World card at the gangway. A photo ID is also required for those Guests who are 18 years of age or older. Guests under the age of 18 are required to have a Parent, Guardian or other responsible adult sign an authorization form at the time it is given out if they wish to go ashore unaccompanied. Authorization forms are available at the gangways and Guest Services.

### Please Note:

Please remember to use plenty of sunscreen and mosquito repellent when venturing ashore.

### Cold and Flu Reminder

Please wash hands frequently and thoroughly, particularly before meals. Contact the Health Center by dialing 7-1923, should anyone in your party become ill.

### Corridor Quiet Hours

As a courtesy to all our Guests, please recognize quiet hallway hours from 10:00 p.m. til 8:00 a.m.

### Inclement Weather

For the safety of all Guests, outdoor events may be changed due to unforeseen weather conditions.

### Environmental Message

With Disney's commitment to the Environment, please refrain from throwing anything over the Ship's side. Thank you!

### No Reserved Seats Policy

As a courtesy to all our Guests, we kindly advise that the saving of seats is not permitted in the Walt Disney Theatre, and the saving of the sun loungers is not permitted on Deck 11, 12, and 13. Items left unattended will be returned to lost and found at Guest Services, Deck 3 Midship.

### Smoking

For the comfort of our guests the following areas are designated as Smoking areas:

- Deck 13, Forward, port side, by "Currents"
  - Deck 12, Aft, port side outdoor area that is accessible through the Meridian Lounge
  - Deck 4, Aft, port side from 6:00 p.m. to 6:00 a.m. only (all of Deck 4 is no smoking from 6:00 a.m. to 6:00 p.m.)
- Smoking is permitted on stateroom verandahs. Smoking is prohibited inside all guest staterooms. Guests found smoking in their staterooms will be charged a \$250 stateroom recovery fee.

### Walt Disney Theatre

Theatrical performances may use artificial fog, strobe lights, pyrotechnics and other special effects. For the safety of our performers and the comfort of those around you, the use of any photography, video recording device or any electronic equipment is prohibited.

### Verandah Safety

Please do not leave any combustible materials on your balcony when not present in your stateroom for safety reasons.

DD/NB/5D/144/7.13.12/MJM/©DISNEY



| Morning          | 8:30  | 8:45 | 9:00   | 9:15 | 9:30   | 9:45 | 10:00   | 10:15 | 10:30                                  | 10:45 | 11:00                                      | 11:15 | 11:30   | 11:45 | 12:00  | 12:15 | 12:30                   | 12:45 | 1:00 | 1:15 | 1:30 |
|------------------|---|------|--|------|--|------|---|-------|--|-------|--|-------|---|-------|--|-------|-------------------------|-------|------|------|------|
| FUNNEL VISION    | Mickey's Once Upon a Christmas (G)<br>Funnel Vision                       |      |  |      |  |      | Disney Christmas Day Parade (G)<br>Funnel Vision      |       |  |       |  |       | Guest DJ Automatic Spins by the Pool<br>Deck 11, Midship                    |       |  |       |                         |       |      |      |      |
| MOVIES           | Winnie the Pooh: Seasons of Giving (G)<br>Buena Vista Theatre             |      |  |      |  |      | The Muppet Christmas Carol (G)<br>Buena Vista Theatre |       |  |       |  |       | The Santa Clause (PG)<br>Buena Vista Theatre >1:52 p.m.                     |       |  |       |                         |       |      |      |      |
| CHARACTER        |   |      |  |      |  |      |   |       |  |       |  |       | Dance Party<br>Lobby Atrium   |       | Princess Gathering<br>Lobby Atrium             |       | Minnie<br>Dk 4, Balcony |       |      |      |      |
| FUN FOR ALL AGES | Christmas Day Catholic Mass<br>Walt Disney Theatre <8:00 a.m.             |      |  |      | Interdenominational Service<br>Walt Disney Theatre |      |   |       |  |       |  |       | Captain's Signing<br>White Caps   |       | Animation: Creating a Character<br>D Lounge    |       |                         |       |      |      |      |
|                  | Coloring Time<br>D Lounge   |      | Wake Up With Disney Jr.<br>D Lounge            |      | Family Holiday Crafts<br>D Lounge                  |      |   |       |  |       |  |       | Disney Trivia<br>D Lounge   |       | Disney Vacation Club Presentation<br>Evolution |       |                         |       |      |      |      |
|                  | Holiday Treats, Drinks and Face Painting<br>Lobby Atrium, Deck 3, Midship |      |  |      |  |      |   |       |  |       |  |       | NBA Basketball<br>687 Pub (Subject to satellite availability and blackouts) |       |  |       |                         |       |      |      |      |
| ADULTS           | Rise & Shine Club<br>Cove Cafe  |      | Art of the Theme Show Tour<br>Meet at Meridian |      | 50 Movie Quotes Trivia<br>687 Pub                  |      |   |       | Singles Lunch<br>Royal Palace          |       | TV Catchphrase Trivia<br>D District Lounge |       |   |       |  |       |                         |       |      |      |      |
| VIBE             |   |      |  |      |  |      |   |       |  |       |  |       | Zombified   |       |  |       |                         |       |      |      |      |
| EDGE             |   |      |  |      |  |      |   |       |  |       |  |       | Super Sloppy Science  |       | Ice Cream Social                               |       |                         |       |      |      |      |
| OCEANEER LAB     |   |      |  |      |  |      |   |       |  |       | Lunch                                      |       |   |       |  |       |                         |       |      |      |      |
| OCEANEER CLUB    |   |      |  |      |  |      |   |       |  |       |  |       |   |       | Lunch  |       |                         |       |      |      |      |
|                  | "Magic Playfloor"<br>9:15 a.m. - 9:45 a.m.                                |      |  |      | "Big Top Fun Fest"<br>10:15 a.m. - 10:45 a.m.      |      |   |       | "Animation"<br>11:00 a.m. - 11:45 a.m. |       |  |       |   |       |  |       |                         |       |      |      |      |

Symbol for activities that will be repeated during the cruise

| Afternoon        | 1:45  | 2:00 | 2:15                               | 2:30 | 2:45   | 3:00 | 3:15                                    | 3:30 | 3:45   | 4:00 | 4:15  | 4:30 | 4:45  | 5:00 | 5:15                         | 5:30 | 5:45 | 6:00 | 6:15 | 6:30 | 6:45 |
|------------------|---|------|------------------------------------|------|--|------|---|------|--|------|---|------|---|------|------------------------------|------|------|------|------|------|------|
| FUNNEL VISION    | Mickey's Twice Upon a Christmas (G)<br>Funnel Vision  |      |                                    |      |  |      | The Santa Clause 2 (G)<br>Funnel Vision |      |  |      |   |      | The Santa Clause 3: The Escape Clause (G)<br>Funnel Vision        |      |                              |      |      |      |      |      |      |
| MOVIES           | Lincoln (PG-13)<br>Buena Vista Theatre                |      |                                    |      |  |      | Brave (PG)                              |      |  |      |   |      | >7:15 p.m.  |      |                              |      |      |      |      |      |      |
| CHARACTER        | Daisy<br>Dk 4, Balcony                                |      | Max<br>Sports Deck                 |      | Max<br>Sports Deck                             |      | Goofy<br>Dk 4, Balcony                  |      | Mickey<br>Dk 4, Balcony                              |      | Minnie<br>Atrium  |      | Minnie<br>Atrium  |      | Daisy<br>Atrium              |      |      |      |      |      |      |
| FUN FOR ALL AGES | Animal Towel Folding<br>D Lounge                      |      | Red Carpet Arrivals Preludes       |      |  |      |   |      | Bingo Pre Sales                                      |      |   |      | EnharmoniQ LIVE<br>Lobby Atrium - Live Music                      |      | Red Carpet Arrivals Preludes |      |      |      |      |      |      |
|                  | Pictionary Challenge<br>District Lounge               |      | Childrens Caroling<br>Lobby Atrium |      | Mickey 200<br>Evolution (Limited availability) |      |   |      |  |      | Ping Pong<br>Goofy's Sports Deck  |      |   |      |                              |      |      |      |      |      |      |
| ADULTS           | Making of the Dream<br>Evolution                      |      |                                    |      |  |      |   |      | Group Cycling<br>Senses Fitness Center               |      | NBA Basketball<br>687 Pub (Subject to satellite availability and blackouts) |      |   |      |                              |      |      |      |      |      |      |
|                  | How To Increase Your Metabolism<br>Senses Spa & Salon |      |                                    |      | D Lounge                                       |      |   |      | Martini Tasting (21+)<br>Meridian (Pre Book/Nom Fee) |      | 18*21 Basketball<br>Goofy's Sports Deck                                     |      | Tequila & Margarita Tasting (21+)<br>Evolution (Pre Book/Nom Fee) |      |                              |      |      |      |      |      |      |
| VIBE             | DJ Training   |      |                                    |      | Dream Factor                                   |      |   |      | Pool Party   |      |   |      | Sports Deck   |      | Gingerbread House Making     |      |      |      |      |      |      |
| EDGE             | Dream Factor  |      |                                    |      | Gingerbread House Making                       |      |   |      | Sports Deck  |      |   |      | Mini Golf   |      |                              |      |      |      |      |      |      |
| OCEANEER LAB     | Holiday Caroling Rehearsal                            |      | Childrens Caroling<br>Lobby Atrium |      |  |      |   |      |  |      | Dinner  |      |   |      |                              |      |      |      |      |      |      |
| OCEANEER CLUB    |   |      |                                    |      | Picture This                                   |      | Memory Wall                             |      |  |      | Dinner  |      |   |      |                              |      |      |      |      |      |      |

Fold along the dotted lines and take me with you so you don't miss any of the fun!

| Evening          | 7:00  | 7:15 | 7:30                    | 7:45 | 8:00  | 8:15 | 8:30   | 8:45 | 9:00  | 9:15 | 9:30                                 | 9:45 | 10:00   | 10:15 | 10:30  | 10:45 | 11:00                                | 11:15 | 11:30           | 11:45 | 12:00 |  |
|------------------|---|------|-------------------------|------|---|------|--|------|---|------|--------------------------------------|------|---|-------|--|-------|--------------------------------------|-------|-----------------|-------|-------|--|
| FUNNEL VISION    | Disney Holiday Classics Vol.8 (G)<br>Funnel Vision                          |      |                         |      |   |      | Disney Holiday Classics Vol.9 (G)<br>Funnel Vision |      |   |      |                                      |      | Enchanted (PG)<br>Funnel Vision                   |       |  |       |                                      |       |                 |       |       |  |
| MOVIES           | Brave (PG)  |      |                         |      |   |      | Buena Vista Theatre                                |      |   |      |                                      |      |   |       |  |       |                                      |       |                 |       |       |  |
| CHARACTER        | Mickey<br>Dk 4, Balcony   |      | Mickey<br>Dk 4, Balcony |      | Tiana<br>Atrium                                   |      | Donald<br>Atrium                                   |      | Minnie<br>Atrium                                  |      | Mickey<br>Dk 4, Balcony              |      | Minnie<br>Atrium                                  |       | Mickey<br>Dk 4, Balcony                                |       | Aurora<br>Atrium                     |       | Daisy<br>Atrium |       |       |  |
| FUN FOR ALL AGES |   |      |                         |      | Red Carpet Arrivals Preludes                      |      |  |      |   |      | Family Superstar Karaoke<br>D Lounge |      | Family Dream Quest<br>D Lounge                    |       |  |       | Family Superstar Karaoke<br>D Lounge |       |                 |       |       |  |
|                  | Family Dance Party<br>Evolution   |      |                         |      |   |      |  |      | EnharmoniQ LIVE<br>Lobby Atrium                   |      |                                      |      |   |       |  |       |                                      |       |                 |       |       |  |
| ADULTS           | NBA Basketball<br>687 Pub (Subject to satellite availability and blackouts) |      |                         |      |   |      | 18*21 Mixer<br>Evolution                           |      |   |      |                                      |      | Match Your Mate<br>Evolution                      |       | Roadhouse, followed by Guest DJ Automatic<br>Evolution |       |                                      |       |                 |       |       |  |
|                  | Electrix Duo LIVE<br>District Lounge - Live Music                           |      |                         |      | Electrix Duo LIVE<br>District Lounge - Live Music |      |  |      | Electrix Duo LIVE<br>District Lounge - Live Music |      |                                      |      | Electrix Duo LIVE<br>District Lounge - Live Music |       |  |       |                                      |       |                 |       |       |  |
| VIBE             |   |      |                         |      |   |      | Pump It Up   |      |   |      |                                      |      | Ghost Voyagers                                    |       |  |       | Invade Club                          |       |                 |       |       |  |
| EDGE             | That's Hilarious  |      |                         |      |   |      | Invade Vibe  |      |   |      |                                      |      |   |       |  |       |                                      |       |                 |       |       |  |
| OCEANEER LAB     |   |      |                         |      |   |      |  |      |   |      |                                      |      |   |       |  |       |                                      |       |                 |       |       |  |
| OCEANEER CLUB    |   |      |                         |      |   |      |  |      |   |      |                                      |      |   |       |  |       |                                      |       |                 |       |       |  |

IN THE SPOTLIGHT SERIES  
 SOLVE IT! SERIES  
 JUMP UP! SERIES  
 CREATE & INVENT SERIES  
 OPEN HOUSE  
 CLUBHOUSE SERIES  
 STORYBOOK SERIES



TUESDAY, DECEMBER 25, 2012 - DAY AT SEA

# BUENA VISTA THEATRE



|   |  |  |   |   |  |
|---|--|--|---|---|--|
| 8:30 a.m.<br>Run Time:<br>1 hr 03 min<br>Rated: G | 10:00 a.m.<br>Run Time:<br>1 hr 28 min<br>Rated: G | 12:15 p.m.<br>Run Time:<br>1 hr 37 min<br>Rated: G | 2:30 p.m.<br>Run Time:<br>2 hr 32 min<br>Rated: PG-13 | 5:30 & 8:15 p.m.<br>Run Time:<br>1 hr 45 min<br>Rated: PG | 10:30 p.m.<br>Run Time:<br>1 hr 32 min<br>Rated: G |
|---|--|--|---|---|--|

## Character Appearances

**SANTA CLAUS**  
Lobby Atrium - 8:30 a.m.

**GOOFY**  
Lobby Atrium - 9:00 a.m.,  
10:00 a.m. & 11:00 a.m.  
Deck 4, Balcony  
4:45 p.m. & 9:15 p.m.

**WOODY & JESSIE**  
Lobby Atrium  
9:00 a.m. & 10:00 a.m.

**MICKEY MOUSE**  
Deck 4, Balcony - 9:00 a.m.,  
10:00 a.m., 5:15 p.m., 5:45 p.m.,  
7:15 p.m., 7:45 p.m., 9:45 p.m.,  
& 10:15 p.m.

**MRS. INCREDIBLE**  
Preludes  
9:00 a.m. & 10:00 a.m.

**MINNIE MOUSE**  
Deck 4, Balcony  
9:30 a.m. & 10:00 a.m.  
Lobby Atrium - 5:15 p.m.,  
5:45 p.m., 7:15 p.m., 7:45 p.m.,  
9:30 p.m. & 10:00 p.m.

**BUZZ LIGHTYEAR**  
Lobby Atrium  
9:30 a.m. & 10:30 a.m.

**MR. INCREDIBLE**  
Preludes  
9:30 a.m. & 10:30 a.m.

**CHARACTER DANCE PARTY**  
Lobby Atrium - 12:15 p.m.

**PRINCESS GATHERING**  
Lobby Atrium - 1:15 p.m.

**PRINCESS MINNIE**  
Deck 4, Balcony - 1:30 p.m.

**DAISY DUCK**  
Deck 4, Balcony - 2:30 p.m.  
Lobby Atrium  
6:15 p.m. & 10:30 p.m.

**MAX**  
Goofy's Sports Deck  
3:30 p.m. & 4:30 p.m.

**DONALD DUCK**  
Lobby Atrium  
4:45 p.m. & 8:15 p.m.

**CINDERELLA**  
Lobby Atrium  
7:15 p.m. & 9:30 p.m.

**PRINCESS TIANA**  
Lobby Atrium - 8:00 p.m.

**PRINCESS AURORA**  
Lobby Atrium - 10:15 p.m.



For details of daily Disney character appearances, refer to the character line in on Navigator Grid, or the digital character board in the Lobby Atrium.

## YOUTH ACTIVITIES THEMED EXPERIENCES

**CLUBHOUSE SERIES**  
focuses on movement and features content which appeals to younger children.

**JUMP UP! SERIES**  
includes large ground games & movement-oriented activities.

**IN THE SPOTLIGHT SERIES**  
focuses on children's stage presence with lots of activities and enthusiasm.

**STORYBOOK SERIES**  
is designed with a strong connection to the Disney classic stories.

**CREATE & INVENT SERIES**  
will have a tactile focus allowing children to create and admire their work.

**SOLVE IT! SERIES**  
are less active, but will challenge children with problem/solutions based activities.

### OPEN HOUSE

activities for families, adults and children of all ages to enjoy together.

## SHIP DIRECTORY

### YOUTH ACTIVITIES

|                            |              |                        |
|----------------------------|--------------|------------------------|
| DISNEY'S OCEANEER CLUB     | DECK 5, MID  | 9:00 A.M. - 11:30 P.M. |
| DISNEY'S OCEANEER LAB      | DECK 5, MID  | 9:00 A.M. - 1:00 A.M.  |
| EDGE                       | DECK 13, MID | 10:00 A.M. - 1:00 A.M. |
| VIBE                       | DECK 4, FWD  | 10:00 A.M. - 1:00 A.M. |
| IT'S A SMALL WORLD NURSERY | DECK 5, MID  | 9:00 A.M. - 12:00 MID. |

### RECREATION

|                          |              |  |
|--------------------------|--------------|--|
| AQUADUCK                 | DECK 12, MID | 9:00 A.M. - 11:00 P.M.   |
| DONALD'S POOL            | DECK 11, MID | 6:00 A.M. - 12:00 MID.   |
| GOLF/SPORTS SIMULATOR    | DECK 13, AFT | 9:00 A.M. - 6:00 P.M.  |
| GOOFY & MAX'S MINI GOLF  | DECK 13, AFT | 8:00 A.M. - 10:00 P.M.   |
| GOOFY'S SPORTS DECK      | DECK 13, AFT | 11:30 P.M. - 6:00 P.M.   |
| MICKEY'S POOL            | DECK 11, MID | 6:00 A.M. - 12:00 MID.   |
| MICKEY'S SLIDE           | DECK 11, MID | 9:00 A.M. - 6:00 P.M.  |
| MIDSHIP DETECTIVE AGENCY | DECK 5, MID  | 8:00 A.M. - 11:00 P.M.   |
| NEMO'S REEF              | DECK 11, MID | 9:00 A.M. - 6:00 P.M.  |
| PORT ADVENTURES DESK     | DECK 5, MID  | 9:00 A.M. - 12:00 P.M.<br>2:00 P.M. - 5:00 P.M.<br>7:00 P.M. - 8:30 P.M. |
| QUIET COVE POOL          | DECK 11, FWD | 6:00 A.M. - 12:00 MID.   |
| SENSES FITNESS CENTER    | DECK 11, FWD | 6:00 A.M. - 10:00 P.M.   |

### GENERAL INFORMATION

|                          |              |  |
|--------------------------|--------------|--|
| ARR-CADE                 | DECK 11, AFT | 24 HOURS   |
| DISNEY VACATION CLUB     | DECK 4, MID  | 9:00 A.M. - 12:00 P.M.<br>2:30 P.M. - 10:00 P.M. |
| FUTURE CRUISE SALES DESK | DECK 4, MID  | 9:00 A.M. - 12:00 P.M.<br>2:30 P.M. - 9:00 P.M.  |
| GUEST SERVICES           | DECK 3, MID  | 24 HOURS   |
| HAIR BRAIDING            | DECK 11, MID | 8:00 A.M. - 9:30 P.M.                            |
| MEDICAL HEALTH CENTER    | DECK 1, FWD  | 9:30 A.M. - 11:00 A.M.<br>4:30 P.M. - 7:00 P.M.  |
| PORT & SHOPPING DESK     | DECK 4, MID  | 5:00 P.M. - 8:00 P.M.<br>9:30 P.M. - 10:30 P.M.  |
| PRELUDES                 | DECK 3, FWD  | 5:45 P.M. - 6:30 P.M.<br>8:00 P.M. - 8:45 P.M.   |
| SENSES SPA AND SALON     | DECK 11, FWD | 8:00 A.M. - 10:00 P.M.                           |
| SHUTTERS PHOTO GALLERY   | DECK 4, MID  | 10:00 A.M. - 11:00 P.M.                          |

### SHOPPING

|                    |              |  |
|--------------------|--------------|--|
| MICKEY'S MAINSAIL  | DECK 3, FWD  | 9:00 A.M. - 11:00 P.M.                           |
| QUACKS             | DECK 11, MID | 10:00 A.M. - 3:00 P.M.<br>7:00 P.M. - 11:00 P.M. |
| SEA TREASURES      | DECK 3, FWD  | 9:00 A.M. - 11:00 P.M.                           |
| VISTA GALLERY      | DECK 4, MID  | 10:00 A.M. - 11:00 P.M.                          |
| WHITE CAPS         | DECK 3, FWD  | 9:00 A.M. - 11:00 P.M.                           |
| WHOZITS & WHATZITS | DECK 11, MID | 10:00 A.M. - 4:00 P.M.<br>7:00 P.M. - 11:00 P.M. |

### IMPORTANT NUMBERS

Fire/Security: 7-3001  
Medical Emergency: 7-3000  
Health Center: 7-1923

|                    |                                     |                         |                                 |                        |
|--------------------|-------------------------------------|-------------------------|---------------------------------|------------------------|
| <b>DINNER MENU</b> | Animator's Palate: Christmas Dinner | <b>DRINK OF THE DAY</b> | Caribbean Christmas (Alcoholic) | Tuesday: Partly Cloudy |
|                    | Enchanted Garden: Christmas Dinner  |                         | Mango Smoothie (Non Alcoholic)  | High: 75°F/24°C        |
|                    | Royal Palace: Christmas Dinner      |                         | Wednesday: Partly Sunny         | High: 75°F/24°C        |
|                    | Dining Times: 5:45 p.m. & 8:15 p.m. |                         | <b>Evening Attire: Formal</b>   |                        |

## DINING & LOUNGES

### BREAKFAST

|                                |              |                        |
|--------------------------------|--------------|------------------------|
| CABANAS CONTINENTAL(PORT SIDE) | DECK 11, AFT | 7:00 A.M. - 7:30 A.M.  |
| CABANAS                        | DECK 11, AFT | 7:30 A.M. - 11:30 A.M. |
| ENCHANTED GARDEN               | DECK 2, MID  | 9:00 A.M. - 10:30 A.M. |
| ROYAL PALACE                   | DECK 3, MID  | 8:00 A.M. - 9:30 A.M.  |

### LUNCH

|                      |              |                        |
|----------------------|--------------|------------------------|
| CABANAS              | DECK 11, AFT | 12:00 P.M. - 2:00 P.M. |
| ENCHANTED GARDEN     | DECK 2, MID  | 12:00 P.M. - 1:30 P.M. |
| FILLMORE'S FAVORITES | DECK 11, MID | 11:00 A.M. - 6:00 P.M. |
| LUIGI'S PIZZERIA     | DECK 11, MID | 11:00 A.M. - 6:00 P.M. |
| ROYAL PALACE         | DECK 3, MID  | 12:00 P.M. - 1:30 P.M. |
| TOW MATER'S GRILL    | DECK 11, MID | 12:00 P.M. - 6:00 P.M. |

### DINNER

|  |              |                         |
|--|--------------|-------------------------|
| ANIMATOR'S PALATE  | DECK 3, AFT  | 5:45 P.M. & 8:15 P.M.   |
| ENCHANTED GARDEN   | DECK 2, MID  | 5:45 P.M. & 8:15 P.M.   |
| ROYAL PALACE   | DECK 3, MID  | 5:45 P.M. & 8:15 P.M.   |
| CABANAS TABLE SERVICE  | DECK 11, AFT | 6:30 P.M. - 8:30 P.M.   |
| PALO & REMY (18+)  | DECK 12, AFT | 6:00 P.M. - 9:00 P.M.   |
| (RESERVATION REQUIRED & COVER CHARGE APPLICABLE. DIAL #7-9734) |              |                         |
| TOW MATER'S GRILL  | DECK 11, MID | 11:00 A.M. - 11:00 P.M. |

### LATE NIGHT SNACKS

|                  |              |                         |
|------------------|--------------|-------------------------|
| LUIGI'S PIZZERIA | DECK 11, MID | 9:30 P.M. - 12:30 A.M.  |
| THE DISTRICT     | DECK 4, AFT  | 10:45 P.M. - 11:45 P.M. |

### ADDED FEATURES

|                  |              |                         |
|------------------|--------------|-------------------------|
| BEVERAGE STATION | DECK 11, AFT | 24 HOURS                |
| EYE SCREAM       | DECK 11, MID | 11:00 A.M. - 11:00 P.M. |
| ROOM SERVICE     | DIAL 0       | 24 HOURS                |

### ENTERTAINMENT - LOUNGES - BARS

Adults must be 21 and older to consume alcoholic beverages.

|                       |              |                         |
|-----------------------|--------------|-------------------------|
| 687                   | DECK 4, AFT  | 10:00 A.M. - 9:00 P.M.  |
| 687 (18+)             | DECK 4, AFT  | 9:00 P.M. - 12:30 A.M.  |
| BON VOYAGE            | DECK 3, MID  | 9:00 A.M. - 11:00 P.M.  |
| COVE BAR (18+)        | DECK 11, FWD | 9:30 A.M. - 11:00 P.M.  |
| COVE CAFE (18+)       | DECK 11, FWD | 7:00 A.M. - 6:00 P.M.   |
| CURRENTS              | DECK 13, FWD | 10:00 A.M. - 12:00 MID. |
| D LOUNGE              | DECK 4, MID  | SHOWTIMES               |
| DISTRICT LOUNGE       | DECK 4, AFT  | 10:00 A.M. - 9:00 P.M.  |
| DISTRICT LOUNGE (18+) | DECK 4, AFT  | 9:00 P.M. - 12:00 MID.  |
| EVOLUTION (18+)       | DECK 4, AFT  | 10:00 P.M. - 2:00 A.M.  |
| FROZONE TREATS        | DECK 11, MID | 11:00 A.M. - 11:00 P.M. |
| MERIDIAN (18+)        | DECK 12, AFT | 10:00 A.M. - 12:30 A.M. |
| OUTLOOK               | DECK 14, MID | SUNSET TIMES            |
| PINK                  | DECK 4, AFT  | 5:00 P.M. - 12:00 MID.  |
| SKYLINE (18+)         | DECK 4, AFT  | 5:00 P.M. - 1:00 A.M.   |
| VISTA CAFE            | DECK 4, MID  | 7:30 A.M. - 11:00 P.M.  |
| WAVES                 | DECK 12, AFT | 10:00 A.M. - 7:00 P.M.  |

Consumers who order raw or partially cooked, ready-to-eat food of animal origin, are hereby informed that the food is not sufficiently cooked to ensure its safety.



**SANTA CLAUS**  
Don't miss your chance to see Santa today in the Lobby Atrium!  
8:00 a.m. - 11:30 a.m.

**CHARACTER DANCE PARTY**  
Put your dancing shoes on and join some of your favorite Disney Friends in the Lobby Atrium, Deck 3, Midship for fun and dancing.  
12:15 p.m.