

# PERSONAL NAVIGATOR



MONDAY, DECEMBER 24, 2012

Sunrise: 6:52 a.m. Sunset: 5:27 p.m.

Evening Attire: Cruise Casual

All Ashore: 9:45 a.m.

All Aboard: 6:00 p.m.

Gangway: Deck 1, Midship, & Deck 1, Forward

Monday: Partly Sunny High: 75 °F/24 °C

Tuesday: Partly Sunny High: 75 °F/24 °C

NASSAU

## The Magic & Illusion of Knight Magic

WALT DISNEY THEATRE

Decks 3 & 4 Forward  
6:15 P.M. & 8:30 P.M.



Assistance available at the Deck 3 entrance 30 minutes prior to show time.



CHRISTMAS EVE

### Nassau Port Information

While you will find many great experiences in Nassau, there have been reports of increased crime, including assaults and robberies involving tourists in the area. As in any large city, you'll want to take some basic precautions to make the most of your time ashore.

- Be aware of your surroundings at all times, just as you would in your normal daily activities.
- Avoid short cuts, narrow alleys or poorly lit streets. We recommend that guests only visit the downtown shopping areas and other tourist locations.
- Leave valuables in your room safe and avoid carrying large amounts of cash. Exercise caution when using ATMs. Cameras and handbags should be carried out of sight and secured to your person with a strap.
- Leave passports, air transportation tickets and other travel documents in your room safe. When going ashore, each adult is required to carry a Driver's license, copy of passport or other government-issued photo ID.
- If traveling by taxi, use only licensed taxi operators.
- In general, use the same level of precaution you would use in any tourist destination.
- Most crimes are easier to commit in dark unlit areas. You should stay out of these types of areas and consider returning to the ship before nightfall. If you stay out at night, please be extra vigilant about your personal safety.

Disney's  
**Mirror Mirror**  
GAME SHOW

Join the Magic Mirror and Dopey in the fairest game show of them all, Mirror, Mirror. There's trivia, singing and even a relay race. Hi Ho, Hi Ho, its off to play we go!

5:30 & 10:15 p.m.  
D Lounge  
Deck 4, Midship

### Don't Miss:

#### Making of the Dream

Evolution, Deck 4, Aft - 11:30 a.m. (Families)

Evolution (18+), Deck 4, Aft - 2:00 p.m. (Adults)

Explore the origins of Disney Cruise Line — and the latest and greatest innovations conjured especially for the Disney Dream, in this fascinating and entertaining behind-the-scenes program.

#### Dream Quest

Evolution, Deck 4, Midship - 7:30 p.m. (Families)

Evolution (18+), Deck 4, Midship - 10:00 p.m. (Adults)

Enjoy the wildest and wackiest scavenger team event on the seven seas!

#### 80's Music Challenge

Evolution (18+), Deck 4, Aft - 10:30 p.m.

Join your Club Host, Nick, and the Cruise Staff team as they test your 80's music knowledge in this interactive challenge.

#### RELIGIOUS SERVICES

Daily Mass with Fr. George Piggford

Buena Vista Theatre, Decks 4 & 5, Midship - 8:00 a.m.

Midnight Mass with Fr. George Piggford

Walt Disney Theatre, Decks 3 & 4, Forward - 12:00 a.m.



Welcome to Nassau, capital of the Bahamas. It is not too late to book an amazing adventure to Blue Lagoon Island, Atlantis, or you could book a semi-submarine ride.

All Port Adventures meet onboard the ship in Nassau. Please check your tour tickets for meeting times and locations.

### DINNER MENU

Animator's Palate: Pacific Rim Cuisine  
Enchanted Garden: Continental Market  
Royal Palace: French Dinner

### DRINK OF THE DAY

Mistletoe Mojito (Alcoholic)  
Coco Bali (Non Alcoholic)

### IMPORTANT NUMBERS

Fire/Security: 7-3001  
Medical Emergency: 7-3000  
Health Center: 7-1923



# FAMILY ACTIVITY HIGHLIGHTS

## FAMILY CRAFTS

*D Lounge, Deck 4, Midship - 1:15 p.m.*

Create a fun holiday souvenir with your Cruise Staff that is yours to keep.

## DISNEY ANIMATION: CREATING A CHARACTER

*D Lounge, Deck 4, Aft - 2:00 p.m.*

Go behind the scenes at Walt Disney Animation Studios and learn the principles that make animation work, and try your hand at creating your own easy animation demonstration in this fun and fascinating enrichment program.



## CHIP IT GOLF (12+)

*Lobby Atrium, Deck 3, Midship - 2:00 p.m.*

It's par for the course for our Guests 12 and older to compete on our special "greens" in this fun tournament.

## DISNEY VACATION CLUB® GROUP PRESENTATION

*Evolution, Deck 4, Aft - 3:00 p.m.*

Want to learn more about taking magical vacations year after year? Stop by our interactive group presentation to find out more information from a Disney Vacation Club representative.

## HOLIDAY TRADITIONS STORYTELLING

*Lobby Atrium, Deck 3, Midship - 4:00 p.m.*

Join us for some classic Yule Tide tales in the holly-decorated heart of the Disney Dream - the Lobby Atrium.

## FAMILY SUPERSTAR KARAOKE

*D Lounge, Deck 4, Midship - 9:30 & 11:15 p.m.*

Calling all singing superstars! Join your Cruise Staff in D Lounge and sing along to your favorite song - fun for everyone.



## CLUB NEW YEAR'S EVE

*D Lounge, Deck 4, Midship - 10:45 p.m.*

"The party don't start till you walk in" - to Club New Year's Eve! Bring your family and help us count down to a brand new year!



# ADULT ACTIVITY HIGHLIGHTS

## SENSES SPA SEMINARS

*Body Sculpt Boot Camp (Fee Applies) - Goofy's Sports Deck, 7:30 a.m.*

*Wake Up & Stretch - Senses Fitness Center, 8:00 a.m.*

*Group Cycling (Sign-Up Required) - Senses Fitness Center, 8:30 a.m.*

*Seminar: Burn Fat Faster - Senses Spa & Salon, 9:30 a.m.*

*Good Feet Seminar: Relieving Back Pain - Senses Spa & Salon, 3:00 p.m.*

*Acupuncture: A Life Changing Experience - Senses Spa & Salon, 4:00 p.m.*

*Pathway to Yoga - Senses Fitness Center, 5:00 p.m.*



## TASTING SEMINARS

*Champagne Tasting - Pink, 1:00 p.m.*

*Mixology - Skyline, 4:30 p.m.*

*Cognac Tasting - Meridian, 10:30 p.m.*

Please make reservations for tastings at Guest Services for a nominal fee.

Tasting Seminars are only for Guest's 21 and Older.

*Martini Tasting - Meridian, 4:00 p.m.*

*Whiskey Tasting - Meridian, 9:00 p.m.*



## MINI GOLF CHALLENGE

*Goofy's Sports Deck, Deck 13, Aft, 4:30 p.m.*

## MIXER

*Evolution, Deck 4, Aft, 10:00 p.m.*

## ART OF THE THEME SHOW TOUR

*Meet at Meridian, Deck 12, Aft - 2:45 p.m.*

Join us on a guided ship tour and discover the key ingredients that make the Disney Dream cruise ship one-of-a-kind.

## NAME THAT 70'S TUNE

*687 Pub, Deck 4, Aft - 7:30 p.m.*

"At first I was afraid... I was petrified"... know this tune? If so, join your Club Host, Nick, as he tests your knowledge of 70's classics.



## BTRAX (70'S REMIX)

## FOLLOWED BY GUEST DJ AUTOMATIC

*Evolution, Deck 4, Aft - 11:00 p.m.*

Join your Club Host, Nick, & the Cruise Staff for a 70's disco fever epidemic. With a special appearance by the Evolution Dancers.

# DOUBLE-UP MEGA RAFFLE BINGO

**D Lounge, Deck 4, Midship**

**Card Sales - 4:00 p.m. ~ Game Starts - 4:15 p.m.**

Join your Cruise Staff for four huge CASH prize games! You have the chance to win some fantastic raffle prizes in the first three games just for playing. Plus, all electronic chances are doubled at this session!

# SENSES SPA BINGO

**D Lounge, Deck 4, Midship**

**Card Sales - 7:15 p.m.**

**Game Starts - 7:30 p.m.**

Four cash prizes up for grabs, plus great spa prizes to be won, including facials and massages courtesy of the Senses Spa & Salon. Also, the snowball jackpot continues to grow and could be won today!





# YOUTH ACTIVITIES HIGHLIGHTS

## DINE & PLAY

A convenience for families dining at 8:15 p.m., our Youth Activities Counselors will be available at 9:15 p.m. at the entrance of Royal Palace, Enchanted Garden and Animator's Palate dining rooms to bring registered children to join the fun in the Youth Activity areas.



**Deck 5 Midship (7-5864)** 9:00 a.m. - 12:00 Mid.

## OPEN HOUSE

8:00 - 9:00 a.m.

Your chance to see our toddler space, It's A Small World Nursery.



**Deck 5 Midship (7-1440)** 11:00 a.m. - 12:00 a.m.  
(3 - 12 years old)

## ONCE UPON A TIME

5:00 p.m.

Join Beverley the Bookmaker for a magical, musical story time featuring a Disney Princess!

## TOY STORY BOOT CAMP

8:15 p.m.

Ten-hut! The Green Army Men are holding a boot camp and your junior cruiser is invited to join in the fun.



**Deck 5 Midship (7-1445)** 9:00 a.m. - 1:00 a.m.  
(3 - 12 years old)

## STITCH'S ADVENTURE SQUAD

1:00 p.m.

Stitch, everyone's favorite alien, is making an appearance to share some of his mischievous games and activities.

## GET THE HOOK

4:00 & 8:45 p.m.

A villainous villain has stolen Captain Hook's prized golden hook. Become a member of the Top Deck Detective Agency and help solve the clue's to retrieve Hook's hook.



**Deck 13 Midship (7-9743)** 10:00 a.m. - 1:00 a.m.  
(11 - 14 years old)

## ANIMATION ANTICS

3:00 p.m.

Learn simple animation techniques and then put your new skills to use by drawing some of your favorite Disney characters.

## ANYONE CAN COOK

7:30 p.m.

Create a delicious dish together. Fun for everyone!



**Entrance on Deck 4 Forward (7-9417)**  
11:00 a.m. - 2:00 a.m.  
(14 - 17 years old)

## SUPER SLOPPY SCIENCE

5:45 p.m.

Join Professor Make-O-Mess in some of the most extreme experiments you will ever seen in the world of Super Sloppy Science!

## MAGIC SHOW

10:30 p.m.

Put some magic and wonder in your Dream vacation. Say, "Abracadabra!" and fun is sure to appear!

# BUENA VISTA THEATRE

## Today's Movies



10:15 a.m. & 10:30 p.m.  
Run Time: 1 hr 49 min  
Rating: PG



12:30, 5:45 & 8:30 p.m.  
Run Time: 1 hr 32 min  
Rating: G

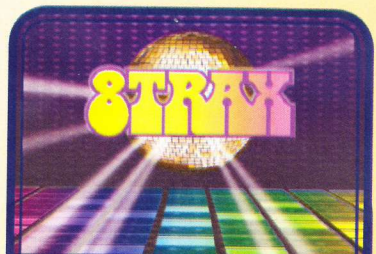


2:30 p.m. - **HD**  
Run Time: 2 hr 32 min  
Rating: PG-13



Get ready for a jammin', slammin', splash splashin' good time at the new Disney Channel Poolside Jam Fest at Sea! Imagine all of your favorite Disney Channel music stars coming together for an afternoon of contests, great music and hot videos, all under the Caribbean sun!

**Deck Stage,  
Deck 11, Midship**  
1:15 p.m.



## 8 TRAX REMIX

Join your Club Host, Nick, & the Cruise Staff for a 70's disco fever epidemic. With a special appearance by the Evolution Dancers.

**Evolution,  
Deck 4, Aft**  
11:00 p.m.

## YOUTH ACTIVITIES OPEN HOUSE

Open House is an opportunity for all to come and participate in a variety of exciting activities and free time in the Oceaneer Club, Lab, Edge and Vibe throughout the cruise. During these times secured programming will still be offered in the other venue for those looking to check their children into care.



# MORE TO ENJOY WHILE ONBOARD



## BOOK YOUR NEXT CRUISE TODAY AND SAVE

Don't waste time, book your next cruise today. You'll save 10%, receive up to a \$200 onboard credit, and pay a reduced deposit! Tune to Channel 8 on your stateroom TV for details and visit the Future Cruise Sales Desk, Deck 4, Midship.



## DISNEY VACATION CLUB® GROUP PREVIEW

Want to learn more about taking magical vacations year after year? Please see a *Disney Vacation Club* representative on Deck 4, Midship, or call 7-2805 from your stateroom phone for more information about our interactive group presentation.



## DIAMONDS FOR BREAKFAST - NASSAU SHOPPING

8:00 a.m. to 10:00 a.m. Shopping Desk, Deck 4, Midship. This is your last chance to see Summer and Vlad! Make sure you collect your FREE Savings Ashore Kit and VIP Cards before going ashore. Summer and Vlad are also your onboard diamond & gemstone specialists and are here to ensure you are well taken care of in Nassau and get the highest quality merchandise and best deals possible.

## ONBOARD AIRLINE CHECK IN

If you would like to have your boarding passes printed for you onboard and have your luggage taken to the airport for you, today at 8:00 p.m. is the last chance to enroll. If you have Disney Cruise Line airport transfer to Orlando International Airport and are flying with one of the participating airlines, please come to the Guest Services Desk on Deck 3, Midship.

## FINE DINING RESERVATIONS

Treat yourself to the ultimate culinary experience at sea. At Remy and Palo the enchantment of sea meets with elegance for a once-in-a-lifetime dining experience. Service/Cover charges will apply, please call 7-9734 for reservations to secure the last available spots.

## SURF @ SEA

\$0.75 per minute, or save money by buying blocks of time. \$27.50 for 50 minutes, \$40 for 100 minutes and \$75 for 250 minutes. Wireless information sheets are available at Guest Services, Deck 3, Midship. **Please note: Due to satellite connectivity, onboard internet service will be noticeably slower than you may be accustomed to and may at times be interrupted or unavailable.**



Welcome to Nassau, capital of the Bahamas. It is not too late to book an amazing adventure to Blue Lagoon Island, Atlantis, or you could book a semi-submarine ride. And don't forget, we will be arriving to Disney's Castaway Cay in two days, so plan ahead to ensure your first choice of adventure is available. Also, ask our team about the exclusive Getaway Packages, available onboard only.

All Port Adventures meet onboard the ship in Nassau. Please check your tour tickets for meeting times and locations.



**SENSES**  
SPA & SALON

## AROMA STONE MASSAGE THERAPY

Full body massage, from head to toe with warm basalt stones and combined with Swedish Massage techniques to de-stress and relax your body. Scalp massage and foot & ankle massage included.

*Senses Spa, Deck 11, Forward, Ext 7-1465*

## TODAY'S SHOPPING SPECIAL

Sophia Fiori is an LA based designer, wholesaler, and one of Hollywood's favorite designers. Industry leaders in vivid colored Diamonds, and more specifically Caribbean blue Diamonds.

*White Caps,  
Deck 3, Forward*



## SHOPPING

### NEWLY ARRIVED COLLECTION - LESPORTSAC

Explore the whimsy of these chic functional bags by LeSportsac. These colorful bags feature bright patterns with LeSportsac's signature ribbon logo. Hand bags, totes, backpacks, attaches, and more! Available in White Caps, Deck 3, Forward

### HAVE YOU SEEN MAUI JIM?

See the world the way it was meant to be seen with Maui Jim's polarized, two lens technology eyewear which provides unmatched protection and comfort. White Caps, Deck 3, Forward.

### TAG HEUER TIMEPIECES

Over 150 years of excellence in keeping time, proudly worn all over the world, and available here on the Disney Dream. White Caps, Deck 3, Forward.

### NIKE APPAREL DEAL

Golfers, it's time to 'Tee-Up!' Polos, shorts, and caps available. Buy one piece of any Nike apparel and get another Nike piece 20% off. You are sure to hit a hole-in-one with this amazing offer! Sea Treasures, Deck 3, Forward.

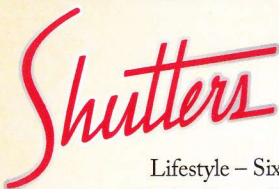
### DISCOVER THE VISTA GALLERY SILENT AUCTION

Come place your bid on exquisite, newly arrived auction pieces of some of your favorite Disney characters! Bidding closes at 6:00 p.m. on the final night of the cruise. Be sure to explore everything the Vista Gallery has to offer, including beautiful pieces by Britto, Thomas Kinkade, and many more. Vista Gallery, Deck 4, Midship.

### TAX AND DUTY FREE

Tax and duty free shopping right here onboard! The best brands in everything you desire. Fossil watches, Effy jewelry, Chanel fragrances, and more. Buy onboard and we will package it safely for your journey home. White Caps, Deck 3, Forward.

Due to port regulations, when the ship is docked, the stores will remain closed.



## PROFESSIONAL PORTRAITS TONIGHT!

Lifestyle - Six Guests maximum  
Night Ship - Six Guests maximum

5:15 p.m. - 6:00 p.m.  
7:15 p.m. - 8:30 p.m.  
9:30 p.m. - 10:30 p.m.

*\*Please note that photos are available for viewing on our interactive photo kiosks approximately five hours after being taken and are only available for purchase during this cruise.*

## IMPORTANT INFORMATION

### Security Notice

All Guests (including children) who wish to disembark the ship are required to present their Key to the World card at the gangway. A photo ID is also required for those Guests who are 18 years of age or older. Guests under the age of 18 are required to have a Parent, Guardian or other responsible adult sign an authorization form at the time it is given out if they wish to go ashore unaccompanied. Authorization forms are available at the gangways and Guest Services.

### Cold and Flu Reminder

Please wash hands frequently and thoroughly, particularly before meals. Contact the Health Center by dialing 7-1923, should anyone in your party become ill.

### Corridor Quiet Hours

As a courtesy to all our Guests, please recognize quiet hallway hours from 10:00 p.m. til 8:00 a.m.

### Inclement Weather

For the safety of all Guests, outdoor events may be changed due to unforeseen weather conditions.

### Environmental Message

With Disney's commitment to the Environment, please refrain from throwing anything over the Ship's side. Thank you!

### No Reserved Seats Policy

As a courtesy to all our Guests, we kindly advise that the saving of seats is not permitted in the Walt Disney Theatre, and the saving of the sun loungers is not permitted on Deck 11, 12 and 13. Items left unattended will be returned to lost and found at Guest Services, Deck 3 Midship.

### Smoking

For the comfort of our guests the following areas are designated as Smoking areas:

- Deck 13, Forward, port side, by "Currents"
  - Deck 12, Aft, port side outdoor area that is accessible through the Meridian Lounge
  - Deck 4, Aft, port side from 6:00 p.m. to 6:00 a.m. only (all of Deck 4 is no smoking from 6:00 a.m. to 6:00 p.m.)
- Smoking is permitted on stateroom verandahs. Smoking is prohibited inside all guest staterooms. Guests found smoking in their staterooms will be charged a \$250 stateroom recovery fee.

### Walt Disney Theatre

Theatrical performances may use artificial fog, strobe lights, pyrotechnics and other special effects. For the safety of our performers and the comfort of those around you, the use of any photography, video recording devices or any electronic equipment is prohibited.

### Verandah Safety

Please do not leave any combustible materials on your balcony when not present in your stateroom for safety reasons.

DD/NB/SD/187/12.2312/MJM/©DISNEY



Morning	8:30	8:45	9:00	9:15	9:30	9:45	10:00	10:15	10:30	10:45	11:00	11:15	11:30	11:45	12:00	12:15	12:30	12:45	1:00	1:15	1:30			
FUNNEL VISION	Virtual Tours		Bolt (G) Funnel Vision							Finding Nemo (G) Funnel Vision							Prep & Landing (G) Funnel Vision			Jam Fest at Sea				
MOVIES	The Odd Life of Timothy Green (PG) Buena Vista Theatre										Buena Vista Theatre MONSTERS, INC. 3D Rated: G - DOLBY 3D > 2:02 p.m.													
CHARACTER	Princess Gathering Lobby Atrium		Daisy Dk 4, Balcony		Minnie Dk 4, Balcony								Donald Dk 4, Balcony											
FUN FOR ALL AGES	Daily Mass Buena Vista Theatre Starts at 8:00 a.m.		Youth Activities Open House Edge				Youth Activities Open House Vibe				Making of the Dream Evolution				Disney Cruise Line Trivia 687 Pub		JUMP FEST Deck Stage, Dk 11, Mid							
	Last Minute Shopping Advice with Summer and Vlad Shopping Desk, Deck 4, Midship										Family Crafts D Lounge													
ADULTS	Friends of Bill W. Outlook														Sports Trivia 687 Pub									
	Group Cycling Senses Fitness Center		Burn Fat Faster Senses Spa & Salon												Champagne Tasting (21+) Pink (Pre Book/Nom Fee)									
VIBE	CH Youth Activities Open House																							
EDGE	CH Youth Activities Open House										Gender Wars													
OCEANEER LAB	Magic Playfloor		Piston Cup Challenge								Super Sloppy Science		Lunch		Stitch's Adventure Squad									
OCEANEER CLUB	CH Youth Activities Open House "Puzzle Playtime" 9:45 a.m. - 10:15 a.m.										Big Top Fun Fest		Cruisin' with Crush		Lunch		Memory Wall							

Symbol for activities that will be repeated during the cruise



Afternoon	1:45	2:00	2:15	2:30	2:45	3:00	3:15	3:30	3:45	4:00	4:15	4:30	4:45	5:00	5:15	5:30	5:45	6:00	6:15	6:30	6:45	
FUNNEL VISION	Pixar Shorts Funnel Vision										WALL-E (G) Funnel Vision										Ratatouille (G) Funnel Vision	
MOVIES	Lincoln (PG-13) Buena Vista Theatre										Buena Vista Theatre MONSTERS, INC. 3D Rated: G - DOLBY 3D > 7:17 p.m.											
CHARACTER			Mickey Mouse Dk 4, Balcony								Goofy Atrium		Mickey Dk 4, Balcony		Daisy Preludes		Buzz Atrium		Cinderella Preludes		Ariel Dk 4, Balcony	
FUN FOR ALL AGES	Disney Animation: Creating a Character D Lounge		Super Sloppy Science Oceaneer Lab		Disney Vacation Club Presentation Evolution		Bingo Pre Sales		Double-Up Mega Raffle D Lounge						Disney's MIRROR D Lounge		The Magic & Illusion of Knight Magic Walt Disney Theatre				X-Box Challenge D Lounge	
	Chip It Golf (12+) Lobby Atrium						Holiday Storytime Lobby Atrium		Electrix Duo LIVE Lobby Atrium - Live Music													
ADULTS			Art of The Theme Show Tour Meet at Meridian				Martini Tasting (21+) Meridian (Nom Fee)		18*21 Mini Golf Goofy's Sports Deck		EPSN MNF Call It! 687 Pub											
	Making of the Dream Evolution		Relieving Back Pain Senses Spa & Salon		Tony Delaney Quiet Cove - Live Guitar		Acupuncture Seminar Senses Spa & Salon		Tony Delaney Quiet Cove - Live Guitar		Tom Scott LIVE District Lounge - Live Piano											
VIBE	Smoothie Time		Animation Antics						Sports Deck		Super Sloppy Science		CH Open House									
EDGE	Gingerbread House Making		Animation Antics						Sports Deck													
OCEANEER LAB	CH Youth Activities Open House "Super Sloppy Science" 2:45 p.m. - 3:30 p.m.										Get the Hook		Mirror, Mirror D Lounge		Dinner							
OCEANEER CLUB	Aloha Luau						Tinker Bell's Talent Show		Once Upon a Time		Dinner		Animation Antics									

Fold along the dotted lines, and take me with you so you don't miss any of the fun!

FOLD

Evening	7:00	7:15	7:30	7:45	8:00	8:15	8:30	8:45	9:00	9:15	9:30	9:45	10:00	10:15	10:30	10:45	11:00	11:15	11:30	11:45	12:00	
FUNNEL VISION	Up (G) Funnel Vision										A Bug's Life (G) Funnel Vision										The Nightmare Before Christmas (PG) Funnel Vision	
MOVIES	Buena Vista Theatre MONSTERS, INC. 3D Rated: G - DOLBY 3D										The Odd Life of Timothy Green (PG) Buena Vista Theatre > 12:19 a.m.											
CHARACTER	Mickey Dk 4, Balcony	Tinker Bell Atrium	Mickey Atrium	Buzz Atrium	Goofy Atrium		Chip & Dale Dk 4, Balcony	Snow White Preludes	Mickey Dk 4, Balcony	Tinker Bell Atrium	Buzz Atrium											
FUN FOR ALL AGES	Bingo Pre Sales		Senses Spa BINGO D Lounge		The Magic & Illusion of Knight Magic Walt Disney Theatre		Family Superstar Karaoke D Lounge		Disney's MIRROR D Lounge		Midnight Mass Starts at 12:00 a.m. Walt Disney Theatre											
			Family Dream Quest Evolution		X-Box Challenge D Lounge																	
ADULTS	Name That 70's Tune 687 Pub		NCAA Football 687 Pub (Subject to satellite availability and blackouts)				Dream Quest Evolution		80's Music Challenge Evolution		8 Trax with Guest DJ Automatic & the Evolution Dancers											
	EnharmoniQ LIVE District Lounge - Live Music		Tom Scott LIVE District Lounge - Live Piano		Whiskey Tasting (21+) Meridian (Pre Book/Nom Fee)		EnharmoniQ LIVE District Lounge - Live Music		18*21 Mixer Evolution		EnharmoniQ LIVE District Lounge - Live Music		EnharmoniQ LIVE District Lounge - Live Music									
VIBE	CH Open House		AquaDuck		Pump It Up		Magic Show															
EDGE	Anyone Can Cook		AquaDuck		That's Hilarious																	
OCEANEER LAB	Anyone Can Cook		Get the Hook		Magic Show		Super Sloppy Science		Magic Playfloor													
OCEANEER CLUB	Dance Party		Toy Story Boot Camp		Magic Playfloor		Pluto's PJ Party															

THE SPOTLIGHT SERIES  
SOLVE IT! SERIES

JUMP UP! SERIES  
CREATE & INVENT SERIES

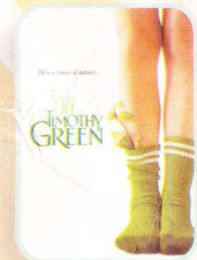
CLUBHOUSE SERIES  
STORYBOOK SERIES



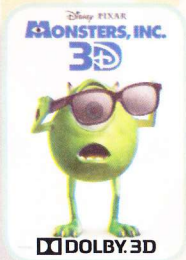


MONDAY, DECEMBER 24, 2012 - NASSAU

# BUENA VISTA THEATRE



10:15 a.m. & 10:30 p.m.  
Run Time: 1 hr 49 min  
Rating: PG



12:30, 5:45 & 8:30 p.m.  
Run Time: 1 hr 32 min  
Rating: G



2:30 p.m. - **CC**  
Run Time: 2 hr 32 min  
Rating: PG-13

## Character Appearances

### PRINCESS GATHERING

Lobby Atrium - 9:00 a.m.

### DAISY DUCK

Deck 4, Balcony - 9:45 a.m.  
Preludes - 5:15 p.m.

### PRINCESS MINNIE

Deck 4, Balcony - 10:15 a.m.

### DONALD DUCK

Deck 4, Balcony - 1:00 p.m.

### DISNEY FRIENDS

Lobby Atrium - 3:00 p.m.

### MICKY MOUSE

Deck 4, Balcony  
3:00 p.m., 5:00 p.m.,  
7:15 p.m. & 9:45 p.m.

### GOOFY

Lobby Atrium  
4:45 p.m. & 8:15 p.m.

### WOODY & JESSIE

Lobby Atrium - 5:00 p.m.,  
7:30 p.m., & 9:45 p.m.

### TINKER BELL

Lobby Atrium - 5:15 p.m.,  
7:30 p.m. & 9:45 p.m.

### MINNIE MOUSE

Lobby Atrium - 5:15 p.m.,  
7:15 p.m., & 9:45 p.m.

### BELLE

Lobby Atrium - 5:15 p.m.

### BUZZ LIGHTYEAR

Lobby Atrium - 5:30 p.m.,  
8:00 p.m., & 10:15 p.m.

### CINDERELLA

Preludes - 5:45 p.m.

### ARIEL

Deck 4, Balcony - 6:00 p.m.

### SNOW WHITE & DOPEY

Preludes  
7:30 p.m. & 9:30 p.m.

### PINOCCHIO & JIMINY CRICKET

Preludes  
8:00 p.m. & 10:00 p.m.

### PLUTO

Deck 4, Balcony - 8:15 p.m.

### CHIP & DALE

Deck 4, Balcony - 9:15 p.m.



For details of daily Disney character appearances, refer to the character line in your Navigator Grid or the digital character board in the Lobby Atrium.

## YOUTH ACTIVITIES THEMED EXPERIENCES

**CLUBHOUSE SERIES**  
focuses on movement and features content which appeals to younger children.

**STORYBOOK SERIES**  
is designed with a strong connection to the Disney classic stories.

**JUMP UP! SERIES**  
includes large ground games & movement-oriented activities.

**CREATE & INVENT SERIES**  
will have a tactile focus allowing children to create and admire their work.

**IN THE SPOTLIGHT SERIES**  
focuses on children's stage presence with lots of activities and enthusiasm!

**SOLVE IT! SERIES**  
are less active, but will challenge children with problem/solutions based activities.

### OH OPEN HOUSE

activities for families, adults and children of all ages to enjoy together.

## SHIP DIRECTORY

### YOUTH ACTIVITIES

DISNEY'S OCEANEER CLUB	DECK 5, MID	11:00 A.M. - 12:00 MID.
DISNEY'S OCEANEER LAB	DECK 5, MID	9:00 A.M. - 1:00 A.M.
EDGE	DECK 13, MID	10:00 A.M. - 1:00 A.M.
VIBE	DECK 4, FWD	11:00 A.M. - 2:00 A.M.
IT'S A SMALL WORLD NURSERY	DECK 5, MID	9:00 A.M. - 12:00 MID.

### RECREATION

AQUADUCK	DECK 12, MID	9:00 A.M. - 11:00 P.M.
DONALD'S POOL	DECK 11, MID	6:00 A.M. - 12:00 MID
GOLF/SPORTS SIMULATORS	DECK 13, AFT	11:00 A.M. - 6:00 P.M.
GOOFY & MAX'S MINI GOLF	DECK 13, AFT	8:00 A.M. - 10:00 P.M.
GOOFY'S SPORTS DECK	DECK 13, AFT	11:30 P.M. - 6:00 P.M.
MICKEY'S POOL	DECK 11, MID	6:00 A.M. - 12:00 MID
MICKEY'S SLIDE	DECK 11, MID	9:00 A.M. - 6:00 P.M.
MIDSHIP DETECTIVE AGENCY	DECK 5, MID	8:00 A.M. - 11:00 P.M.
NEMO'S REEF	DECK 11, MID	9:00 A.M. - 6:00 P.M.
PORT ADVENTURES DESK	DECK 5, MID	8:00 A.M. - 11:00 P.M.
		7:00 P.M. - 8:30 P.M.
QUIET COVE POOL	DECK 11, FWD	6:00 A.M. - 12:00 MID
SENSES FITNESS CENTER	DECK 11, FWD	6:00 A.M. - 10:00 P.M.

### GENERAL INFORMATION

ARR-CADE	DECK 11, AFT	24 HOURS
DISNEY VACATION CLUB	DECK 4, MID	9:00 A.M. - 11:00 A.M. 5:30 P.M. - 10:00 P.M.
FUTURE CRUISE SALES DESK	DECK 4, MID	8:00 A.M. - 10:00 A.M. 2:00 P.M. - 8:30 P.M.
GUEST SERVICES	DECK 3, MID	24 HOURS
MEDICAL HEALTH CENTER	DECK 1, FWD	9:30 A.M. - 11:00 A.M. 4:30 P.M. - 7:00 P.M.
PORT & SHOPPING DESK	DECK 4, MID	8:00 A.M. - 10:00 A.M.
PRELUDES	DECK 3, FWD	5:45 P.M. - 6:30 P.M. 8:00 P.M. - 8:45 P.M.
SENSES SPA AND SALON	DECK 11, FWD	8:00 A.M. - 10:00 P.M.
SHUTTERS PHOTO GALLERY	DECK 4, MID	5:00 P.M. - 11:00 P.M.

### SHOPPING

MICKY'S MAINSAIL	DECK 3, FWD	7:00 P.M. - 11:00 P.M.
SEA TREASURES	DECK 3, FWD	7:00 P.M. - 11:00 P.M.
VISTA GALLERY	DECK 4, MID	7:00 P.M. - 11:00 P.M.
WHITECAPS	DECK 3, FWD	7:00 P.M. - 11:00 P.M.
WHOZITS & WHATZITS	DECK 11, MID	7:00 P.M. - 10:00 P.M.

All Ashore: Approx. 9:45 a.m.

All Aboard: 6:00 p.m.

### SHIP'S AGENT IN NASSAU

Nassau, Bahamas  
R.H. Curry & Company, 303 Shirley St.,  
P.O. Box N8168 Nassau, Bahamas  
242-323-8425 or 242-357-9218

### IMPORTANT NUMBERS

Fire/Security: 7-3001  
Medical Emergency: 7-3000  
Health Center: 7-1923

### DINNER MENU

Animator's Palate: Pacific Rim Cuisine  
Enchanted Garden: Continental Market  
Royal Palace: French Dinner  
Dining Times: 5:45 p.m. & 8:15 p.m.

### DRINK OF THE DAY

Mistletoe Mojito (Alcoholic)  
Coco Ball (Non Alcoholic)

### WEATHER FORECAST

Monday: Partly Sunny  
High: 75°F/24°C  
Tuesday: Partly Sunny  
High: 75°F/24°C

Evening Attire: Cruise Casual

## DINING & LOUNGES

### BREAKFAST

CABANAS CONTINENTAL	DECK 11, AFT	7:00 A.M. - 7:30 A.M.
CABANAS	DECK 11, AFT	7:30 A.M. - 10:30 A.M.
ENCHANTED GARDEN	DECK 2, MID	8:00 A.M. - 10:30 A.M.
ROYAL PALACE	DECK 3, MID	8:00 A.M. - 9:30 A.M.

### LUNCH

CABANAS	DECK 11, AFT	12:00 P.M. - 2:00 P.M.
CABANAS PIZZA	DECK 11, AFT	2:00 P.M. - 4:00 P.M.
FILLMORE'S FAVORITES	DECK 11, MID	11:00 A.M. - 6:00 P.M.
LUIGI'S PIZZA	DECK 11, MID	11:00 A.M. - 6:00 P.M.
ROYAL PALACE	DECK 3, MID	12:00 P.M. - 1:30 P.M.
TOW MATER'S GRILL	DECK 11, MID	11:00 A.M. - 6:00 P.M.

### DINNER

ANIMATOR'S PALATE	DECK 3, AFT	5:45 P.M. & 8:15 P.M.
ENCHANTED GARDEN	DECK 2, MID	5:45 P.M. & 8:15 P.M.
ROYAL PALACE	DECK 3, MID	5:45 P.M. & 8:15 P.M.
TOW MATER'S GRILL	DECK 11, MID	6:00 P.M. - 11:00 P.M.
PALO & REMY (18+)	DECK 12, AFT	6:00 P.M. - 9:00 P.M.

(RESERVATION REQUIRED & COVER CHARGE APPLICABLE. DIAL #7-9734)

### LATE NIGHT SNACKS

LUIGI'S PIZZA	DECK 11, MID	9:30 P.M. - 12:30 A.M.
THE DISTRICT	DECK 4, AFT	10:45 P.M. - 11:45 P.M.

### ADDED FEATURES

BEVERAGE STATION	DECK 11, AFT	24 HOURS
EYE SCREAM	DECK 11, MID	11:00 A.M. - 11:00 P.M.
ROOM SERVICE	DIAL 0	24 HOURS

### ENTERTAINMENT - LOUNGES - BARS

Adults must be 21 and older to consume alcoholic beverages.

687 PUB	DECK 4, AFT	5:00 P.M. - 9:00 P.M.
687 PUB (18+)	DECK 4, AFT	9:00 P.M. - 12:30 A.M.
BON VOYAGE	DECK 3, MID	9:00 A.M. - 11:00 P.M.
COVE BAR (18+)	DECK 11, FWD	10:30 A.M. - 11:00 P.M.
COVE CAFE (18+)	DECK 11, FWD	7:00 A.M. - 6:00 P.M.
CURRENTS (18+)	DECK 13, FWD	11:00 A.M. - 12:00 A.M.
D LOUNGE	DECK 4, MID	SHOWTIMES
DISTRICT LOUNGE	DECK 4, AFT	4:00 P.M. - 9:00 P.M.
DISTRICT LOUNGE (18+)	DECK 4, AFT	9:00 P.M. - 12:00 MID
EVOLUTION (18+)	DECK 4, AFT	10:00 P.M. - 2:00 A.M.
FROZONE TREATS	DECK 11, MID	11:00 A.M. - 11:00 P.M.
MERIDIAN (18+)	DECK 12, AFT	5:00 P.M. - 12:30 A.M.
PINK (18+)	DECK 4, AFT	5:00 P.M. - 12:30 A.M.
OUTLOOK	DECK 14, MID	SUNSET TIME
SKYLINE (18+)	DECK 4, AFT	5:00 P.M. - 1:00 A.M.
VISTA CAFE	DECK 4, MID	7:30 A.M. - 11:00 P.M.
WAVES	DECK 12, AFT	12:00 P.M. - 7:00 P.M.

Consumers who order raw or partially cooked, ready-to-eat food of animal origin, are hereby informed that the food is not sufficiently cooked to ensure its safety.



### IMPORTANT INFORMATION

Please check your Port Adventure tour tickets for meeting times and locations. Visit the Port Adventures Deck 5, Midship, for any questions.