

# PERSONAL NAVIGATOR

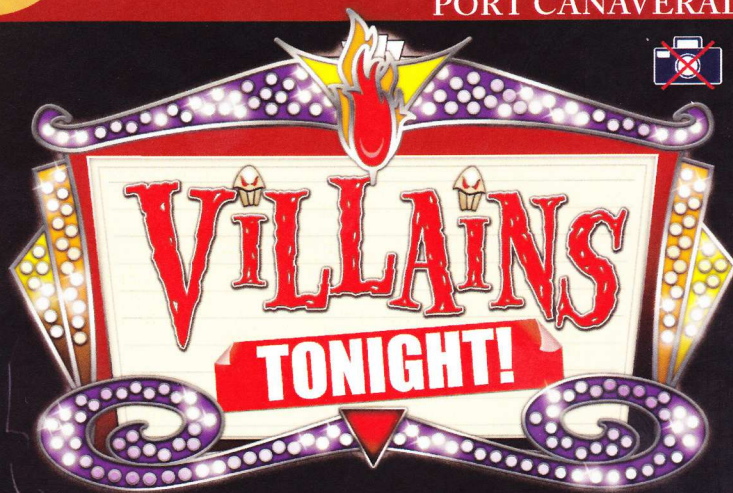


Sunrise: 7:12 a.m. Sunset: 5:42 p.m.  
 Evening Attire: Cruise Casual  
 All Aboard: 3:45 p.m.

Sunday: Cloudy High: 61°F/16°C  
 Monday: Partly Sunny High: 73°F/23°C

SUNDAY, DECEMBER 23, 2012

PORT CANAVERAL



WALT DISNEY THEATRE  
 DECKS 3 & 4, FORWARD  
 6:15 P.M. & 8:30 P.M.

Assistive listening devices are available at the entrance to the Walt Disney Theatre 30 minutes prior to show time.

## Welcome Aboard!

### Your Stateroom & Luggage

Staterooms will be ready at 1:30 p.m. Stateroom hosts will deliver luggage throughout the day until 5:30 p.m.

### Staterooms with Bunk Beds

Bunk beds are recessed into the ceiling and will be prepared during evening turndown service by your Stateroom Host/ess.

### Stateroom Safe

Each stateroom is equipped with a secured storage safe. Instructions for use are located on the safe.

### To Change Dining Assignment

Requests for a different seating will be taken today:

- 1:00 - 3:30 p.m.; Book at Royal Palace
- 3:30 - 4:30 p.m.; Please call 7-1831, 7-1832, or 7-1833

### Remy & Palo Bookings for Brunch & Dinner

There are still spaces available for booking:

- 1:00 - 3:30 p.m., Palo; Book at Royal Palace
- 1:00 - 3:30 p.m., Remy; Book at Royal Palace

Reservations required & cover charge applicable. Please dial 7-9734, or 7-9735 for more information.

### Dinner

- 5:45 p.m. - First seating
- 8:15 p.m. - Second seating

Please check your dining tickets for details of your dining rotation, and bring them to your specific dining location. There is no need to wait in line prior to dinner. Dining Rooms open at designated seating times & your table is reserved each night of your cruise.

It's time to go Sailing Away!  
 Join Mickey and Minnie, along with Tinker Bell and the rest of the gang, as they welcome you aboard the Disney Dream.

4:30 p.m.  
 Deck Stage,  
 Deck 11, Midship

## Don't Miss:

### Welcome Aboard Ship Tour

Meet at Preludes, Deck 3, Forward - 1:00 & 2:00 p.m.

Enjoy the beauty of the Disney Dream with your Cruise Staff in this guided tour.

### King Triton's Tree Lighting Decree

Lobby Atrium, Deck 3, Midship - 7:30 p.m.

Join the Royal Court and some of your Disney friends for this maritime tradition as we light our Christmas Tree.

### Family Fusion Game Show

D Lounge, Deck 4, Midship - 10:15 p.m.

Bring the entire family and test your Disney knowledge in this interactive, family game show.

### Adult Cabaret: Knight Magic

Evolution (18+), Deck 4, Aft - 10:30 p.m.

Featuring the Magic & Illusion of Knight Magic, as they entertain you in this adult cabaret-style show.

## Shutters

Visit Shutters for all your photographic needs, from Digital cameras, batteries, binoculars and accessories. All photos taken during this cruise will be available for viewing on our photo kiosks at Shutters Digital, as well as in your photo folder at Shutters, Deck 4, Midship.

## DINNER MENU

Animator's Palate: Pacific Rim Cuisine  
 Enchanted Garden: Continental Market  
 Royal Palace: French Dinner

## DRINK OF THE DAY

Paradise Cocktail (Alcoholic)  
 Espresso Chiller (Non Alcoholic)

## IMPORTANT NUMBERS

Fire/Security: 7-3001  
 Medical Emergency: 7-3000  
 Health Center: 7-1923



# FAMILY ACTIVITY HIGHLIGHTS

## FAMILY SUPERSTAR KARAOKE

*D Lounge, Deck 4, Midship - 9:30 p.m.*

Join your Cruise Staff in D Lounge tonight and sing along to your favorite song - fun for everyone.

## SALUDOS AMIGOS FIESTA

*D Lounge, Deck 4, Midship - 10:45 p.m.*

Hola Amigos! Consider this your exclusive invitation to a Latin dance party, that has all the trimmings of a proper fiesta. Learn to Salsa, Merengue and have a Latin good time, just don't tell Donald about the party - it's a surprise!

## Cruise Highlights

**Sunday**

**PORT CANAVERAL**  
*All Aboard: 3:45 p.m.*  
*Attire: Cruise Casual*

**VILLAINS TONIGHT!**  
*Walt Disney Theatre*  
6:15 & 8:30 p.m.

**Monday**

**NASSAU**  
*All Ashore: 9:45 a.m.*  
*All Aboard: 6:00 p.m.*  
*Attire: Cruise Casual*

**CABARET: KNIGHT MAGIC**  
*Walt Disney Theatre*  
6:15 & 8:30 p.m.

**Tuesday**

**DAY AT SEA (Christmas Day)**  
*Attire: Formal*

**THE GOLDEN MICKEYS**  
*Walt Disney Theatre*  
3:00, 6:15 & 8:30 p.m.

**Wednesday**

**DISNEY'S CASTAWAY CAY**  
*All Ashore: 8:30 a.m.*  
*All Aboard: 5:00 p.m.*  
*Attire: Pirate/ Cruise Casual*

**MOVIE SPECIAL:  
WRECK-IT RALPH**  
*Walt Disney Theatre*  
5:30, 8:15 & 11:00 p.m.

**Thursday**

**DISNEY'S CASTAWAY CAY**  
*All Ashore: 8:30 a.m.*  
*All Aboard: 5:00 p.m.*  
*Attire: Cruise Casual*

**DISNEY'S BELIEVE**  
*Walt Disney Theatre*  
6:15 & 8:30 p.m.

Subject to change.



# ADULT ACTIVITY HIGHLIGHTS

## FITNESS CLASSES

*Senses Spa and Salon has a variety of seminars and fitness classes available throughout the cruise.*



*Spa Tours - Senses Spa & Salon, 12:00 p.m. - 4:00 p.m.*  
*Spa Raffle - Senses Spa & Salon, 3:00 p.m.*

## BEVERAGE SEMINARS

*Your Beverage team has a host of tastings and seminars to entertain and educate you. Stop by Guest Services, Deck 3, Midship to pre-book these experiences. Nominal fees apply.*

*Whiskey Tasting - Meridian - 9:00 p.m.*

*Cognac Tasting - Meridian - 10:30 p.m.*

## LIVE MUSIC WITH "ENHARMONIQ"

*District Lounge, Deck 4, Aft - 7:30, 9:30, 10:30 p.m. & 11:15 p.m.*  
Join our musical trio as they play live in District Lounge for your listening pleasure.



## CLUB 18\*21 ICE BREAKERS

*Evolution, Deck 4, Aft - 10:00 p.m.*

Club 18\*21 is an exclusive gathering for young adult Guests. Come meet fellow cruisers and learn about the great activities the Disney Dream has to offer to help create the perfect cruise experience.

## FEATURED CABARET ACT THIS VOYAGE



### THE MAGIC & ILLUSION OF KNIGHT MAGIC

Las Vegas based illusionists, Kyle Knight and Mistie, have traveled the world sharing their own unique style of illusions, and giving their audiences a completely different perspective of the art of magic. Together Kyle and Mistie utilize video screens for a close-up view of sleight of hand, demonstrate amazing mental miracles, and perform their illusions with a bold and modern style. They surprise their audience with a different approach to magic as they reveal guarded secrets, perform impossible feats while being totally surrounded, and allow their audience to get up close and involved in ways they've never seen before!

## DIAMOND BINGO

**D Lounge, Deck 4, Midship**

**Card Sales - 7:30 p.m.**

**Game Starts - 7:45 p.m.**

Join us for CASH prizes and your chance to win a Diamond heart-shaped necklace, courtesy of your shopping guides, Summer & Vlad. Complete the Big X in 20 numbers or less, and \$500 could be yours. If not we continue to play for the highest CASH prize of the session!





# YOUTH ACTIVITIES HIGHLIGHTS



**Deck 5 Midship (7-5864) 5:30 p.m. - 12:00 Mid**  
 Infants and Toddlers can enjoy toys and activities at It's A Small World Nursery. Reservations are first come, first served so please stop by!



**Deck 5, Midship (7-1440)  
 6:45 p.m. - 12:00 Mid.**



**Deck 5, Midship (7-1445)  
 5:30 p.m. - 1:00 a.m.**

## REGISTRATION FOR 3-12 YEAR OLDS

Meet the Youth Activities Team in the Oceaneer Lab and Oceaneer Club, complete your registration & learn all about the Themed Experiences this cruise!

**CLUBHOUSE SERIES** - The Clubhouse Themed Experiences focus on movement and feature content which appeals to younger children. *Recommended 7 yrs & younger.*

**STORYBOOK SERIES** - The Storybook Series Themed Experiences are designed with a strong connection to the Disney classic stories. *Recommended 7 yrs & younger.*

**JUMP UP! SERIES** - The Let's Move! Themed Experiences will include large ground games & movement-oriented activities.

**CREATE & INVENT SERIES** - The Create & Invent Themed Experiences will have a tactile focus allowing children to create and admire their work.

**IN THE SPOTLIGHT SERIES** - The In The Spotlight Themed Experiences focus on children's stage presence with lots of activities and enthusiasm. *Recommended 7 yrs & older.*

**SOLVE IT! SERIES** - The Solve It! Themed Experiences are less active, but will challenge children with problem/solutions-based activities. *Recommended 7 yrs & older.*

**YOUTH ACTIVITIES OPEN HOUSE** - Activities for families, adults and children of all ages to enjoy together.

## DINE & PLAY

A convenience for families dining at 8:15 p.m., our Youth Activities Counselors will be available at 9:15 p.m. at the entrance of Royal Palace, Enchanted Garden and Animator's Palate dining rooms to bring registered children to join the fun in the Youth Activity areas.

## YOUTH ACTIVITIES OPEN HOUSE

Open House is an opportunity for all to come and participate in a variety of exciting activities and free time in the Oceaneer Club, Lab, Edge and Vibe throughout the cruise. During these times secured programming will still be offered in the other venue for those looking to check their children into care.

**Deck 13 Midship (7-9743) - 6:00 p.m. - 1:00 a.m.**

## EDGE (11- 14 YEAR OLDS)

Edge is an interactive play space: play video games, watch television and participate in arts and crafts with kids their own age.

## TAKING IT TO THE EDGE

**10:00 p.m. Edge**

Come and meet your counselors and fellow tweens as we get to know each other and what there is for you to do all week long in Edge.



**Entrance on Deck 4 Forward (7- 9417)  
 6:00 p.m. - 2:00 a.m.**

## THE DOWNLOAD (14-17 YEAR OLDS)

**10:30 p.m. Vibe**

Come up to Vibe and help plan all the fun activities you will be doing this cruise with your new friends!

# BUENA VISTA THEATRE

## Feature Movies this Voyage

### SUNDAY - PORT CANAVERAL

5:30 p.m.	PG	Brave	<b>DOLBY.3D</b>
8:15 p.m.	PG	Brave	<b>DOLBY.3D</b>
10:30 p.m.	PG-13	Lincoln	

### MONDAY - NASSAU

10:15 a.m.	PG	The Odd Life of Timothy Green	
12:30 p.m.	G	Monsters, INC.	<b>DOLBY.3D</b>
2:30 p.m.	PG-13	Lincoln	<b>cc</b>
5:45 p.m.	G	Monsters, INC.	<b>DOLBY.3D</b>
8:30 p.m.	G	Monsters, INC.	<b>DOLBY.3D</b>
10:30 p.m.	PG	The Odd Life of Timothy Green	

### TUESDAY - DAY AT SEA

8:30 a.m.	G	Winnie the Pooh - Seasons of Giving	
10:00 p.m.	G	A Muppet Christmas Carol	
12:15 p.m.	G	The Santa Clause	
2:30 p.m.	PG-13	Lincoln	
5:30 p.m.	PG	Brave	<b>DOLBY.3D</b>
8:15 p.m.	PG	Brave	<b>DOLBY.3D</b>
10:30 p.m.	G	Monsters, INC.	<b>DOLBY.3D</b>

### WEDNESDAY - DISNEY'S CASTAWAY CAY

9:30 a.m.	PG-13	Lincoln	
12:30 p.m.	PG-13	The Avengers - 2D Version	
3:30 p.m.	G	Monsters, INC.	<b>DOLBY.3D</b>
5:30 p.m.	PG	The Odd Life of Timothy Green	
8:15 p.m.	PG	The Odd Life of Timothy Green	
11:00 p.m.	PG	Wreck-It Ralph - 2D Version	

### THURSDAY - DISNEY'S CASTAWAY CAY

8:45 a.m.	PG	Wreck-It Ralph - 2D Version	<b>cc</b>
11:00 a.m.	G	Monsters, INC.	<b>DOLBY.3D</b>
1:00 p.m.	PG	The Odd Life of Timothy Green	<b>cc</b>
3:15 p.m.	PG	Wreck-It Ralph - 2D Version	
5:30 p.m.	PG	Wreck-It Ralph	<b>DOLBY.3D</b>
8:15 p.m.	PG	Wreck-It Ralph	<b>DOLBY.3D</b>
10:30 p.m.	PG-13	Lincoln	

Subject to change.



Bring the entire family and test your Disney knowledge in this interactive game show, Family Fusion.

**D Lounge,  
 Deck 4, Midship  
 10:15 p.m.**



## ADULT CABARET

Featuring the Magic & Illusion of Knight Magic, as they entertain you in this adult cabaret-style show.

**Evolution (18+), Deck 4, Aft  
 10:30 p.m.**



# MORE TO ENJOY WHILE ONBOARD

## PLAN YOUR NEXT CRUISE



Book a future cruise today and you'll save 10%, receive up to a \$200 onboard credit, and pay a reduced deposit! Tune to Channel 8 on your stateroom TV for details and visit the Future Cruise Sales Desk, Deck 4, Midship.

## DISNEY VACATION CLUB® MEMBER CELEBRATION



Members! Mix and mingle with other Members and learn how you can enhance your Membership! Please see a *Disney Vacation Club* representative on Deck 4, Midship, or call 7-2805 from your stateroom phone for more information.

## PORT & SHOPPING SHOW - 2:45 P.M. BUENA VISTA THEATRE

This presentation is an absolute must! Fun, informative and interactive with crucial information to help you enjoy every moment in Nassau. Free jewelry, gemstones and color changing gifts for all who attend, as well as a savings coupon book and a raffle for a Tanzanite slide and matching omega. This presentation will ensure you know all the insider tips & secrets to getting the best deals in Nassau.



## BEVERAGE SEMINARS AT SEA

Indulge in the world of beverage! Our beverage team is sharing all their secrets about your favorite drinks. Please visit District Lounge between 12:00 p.m. and 3:00 p.m. to secure your spot. Tasting seminars are for Guests 21 and over. Limited availability.

## FIVE-NIGHT WINE PACKAGES:

### THE CLASSIC WINE PACKAGE & THE PREMIUM WINE PACKAGE

These five-night packages entitle you to select fine wines from our specially designed wine list with up to 25% savings over regular prices. Your dining server will provide more details.

## VALUE WATER PACKAGES

Purchase 24 chilled bottles of Evian water and save over regular prices. For delivery, dial Room Service from your stateroom telephone.

## GINGERBREAD HOUSE DECORATING

Join your Cruise Staff and our Pastry Chef as you decorate your own Gingerbread House. Limited availability, visit Guest Services to sign-up!



## RAINFOREST DELUXE CRUISE PASS

Enjoy our scented showers, aroma steam, sauna rooms and private jacuzzi overlooking the ocean. Also, read a nice book on the warm loungers! Unlimited entry when you purchase your cruise pass today!

Couples \$169.00 and Singles \$124.00  
Limited number of passes on sale!

*Senses Spa & Salon, Deck 11, Forward  
Ext. 7-1465*



From a visit to the world-renowned Atlantis Resort in Nassau to Parasailing high above the turquoise waters around Castaway Cay, there is an adventure for everyone on your Disney Dream cruise. Take advantage of the Two-Day Castaway Cay rentals specials and save 75% on the same rentals for your return trip to Castaway Cay. Visit the friendly team at the Port Adventures Desk, Deck 5, Midship, to learn more about these, and many more Port Adventures.

*Port Adventures Desk, Deck 5, Midship*

## SHOPPING

### IMPORTANT NOTICE FOR NASSAU

Please note that it is important to get all of your shipboard, poolside, and island essentials this evening as tomorrow our merchandise locations will not open until 7:00 p.m. Due to port regulations, our shops are only allowed to open after we have left the port, so please consider your needs for tomorrow, today.

### TODAY'S TOP FEATURE

Remember your Disney Cruise forever with Chamilia, today you will get 10% off the Disney Ship Charm when you purchase a Chamilia bracelet, necklace or pair of earrings. This is only available in our shops onboard. White Caps, Deck 3, Forward.

### DISCOVER THE VISTA GALLERY

Disney Cruise Line exclusive Art. Vista Gallery is your location to immerse yourself in the world of fine art. Celebrate holidays with the new Mickey Santa figurine by Britto. Don't forget to enter the excitement of bidding on the silent auction, bids close at 6:00 p.m. last night of cruise. Vista Gallery, Deck 4, Midship.

### NEWLY ARRIVED PHILIP STEIN WATCHES

Founded in 2002, the Philip Stein Company has brought an innovative outlook to the world of luxury products. The Natural Frequency Technology inside Philip Stein mimics frequencies which are believed to be beneficial to life and overall well-being. Available in White Caps, Deck 3, Forward.

### RED CARPET SOPHIA FIORI DIAMONDS UNVEILING

Drop in at the Whitecaps today to meet our diamond specialist and jeweler to the stars and find out why Sophia Fiori is Hollywood's first choice in diamonds! White Caps, Deck 3, Forward.

### SHOPPING ONBOARD

Tax and duty free shopping right here onboard. A great range of jewelry, fragrances and liquor all at competitive prices is available. Buy onboard and we will package it safely for your journey home. White Caps, Deck 3, Forward.

Due to port regulations, when the ship is docked, the stores will remain closed.

## TODAY'S SHOPPING SPECIAL

Sophia Fiori, Hollywood's first choice in diamonds has boarded the Disney Dream to premier their new collection of white & colored diamonds worn at the Oscars, Golden Globes, Emmy and Grammy Awards.

*White Caps, Deck 3, Forward*

*Sophia Fiori*



*Shutters*

## SAY CHEESE!

Professional Portraits, Lobby Atrium, Deck 3, Midship.

Lifestyle - Six Guests maximum

7:15 - 8:30 p.m. & 9:30 - 10:30 p.m.

**Larger Groups - Please contact the Shutters team on Deck 4 for an appointment**

*\*Please note that photos are available for viewing on our interactive photo kiosks approximately five hours after being taken and are only available for purchase during this cruise.*

DD 187 12.23.2012 ©DISNEY

## IMPORTANT INFORMATION

### Security Notice

All Guests (including children) who wish to disembark the ship are required to present their Key to the World card at the gangway. A photo ID is also required for those Guests who are 18 years of age or older. Guests under the age of 18 are required to have a Parent, Guardian or other responsible adult sign an authorization form at the time it is given out if they wish to go ashore unaccompanied. Authorization forms are available at the gangways and Guest Services.

### Cold and Flu Reminder

Please wash hands frequently and thoroughly, particularly before meals. Contact the Health Center by dialing 7-1923, should anyone in your party become ill.

### Corridor Quiet Hours

As a courtesy to all our Guests, please recognize quiet hallway hours from 10:00 p.m. til 8:00 a.m.

### Inclement Weather

For the safety of all Guests, outdoor events may be changed due to unforeseen weather conditions.

### Environmental Message

With Disney's commitment to the Environment, please refrain from throwing anything over the Ship's side. Thank you!

### No Reserved Seats Policy

As a courtesy to all our Guests, we kindly advise that the saving of seats is not permitted in the Walt Disney Theatre, and the saving of the sun loungers is not permitted on Deck 11, 12 and 13. Items left unattended will be returned to hotel and found at Guest Services, Deck 3 Midship.

### Smoking

For the comfort of our guests the following areas are designated as Smoking areas:

- Deck 13, Forward, port side, by "Currents"
- Deck 12, Aft, port side outdoor area that is accessible through the Meridian Lounge
- Deck 4, Aft, port side from 6:00 p.m. to 6:00 a.m. only (all of Deck 4 is no smoking from 6:00 a.m. to 6:00 p.m.)

•Smoking is permitted on stateroom verandahs. Smoking is prohibited inside all guest staterooms. Guests found smoking in their staterooms will be charged a \$250 stateroom recovery fee.

### Walt Disney Theatre

Theatrical performances may use artificial fog, strobe lights, pyrotechnics and other special effects. For the safety of our performers and the comfort of those around you, the use of any photography, video recording devices or any electronic equipment is prohibited.

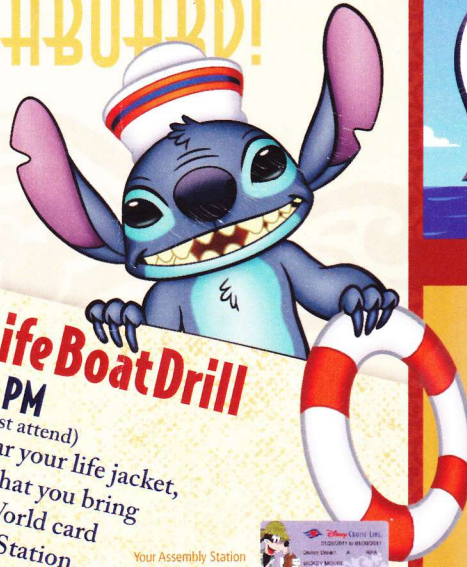
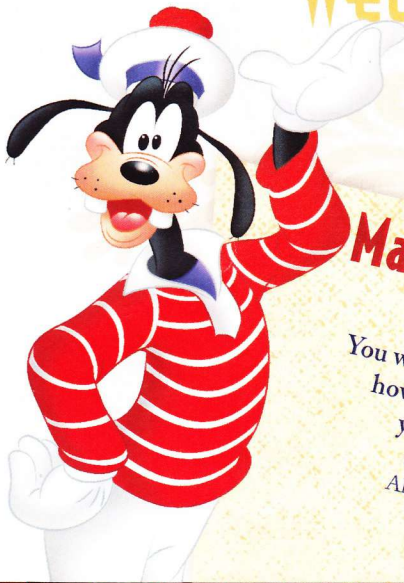
### Verandah Safety

Please do not leave any combustible materials on your balcony when not present in your stateroom for safety reasons.

DD/NB/SD/187/12.23.2012/MJM/©DISNEY



# WELCOME ABOARD!



## Mandatory Life Boat Drill

**4:00 PM**  
 (All Guests must attend)  
 You will not need to wear your life jacket,  
 however it is critical that you bring  
 your Key To The World card  
 to your Assembly Station.  
 All ship services will be suspended  
 between 3:45 and 4:30 p.m.

Your Assembly Station  
 is indicated on your  
 Key To The World card



### SAILING AWAY

It's time to go Sailing Away!  
 Join Mickey and Minnie along  
 with Tinker Bell and the rest of  
 the gang as they welcome you  
 aboard the Disney Dream.

**4:30 p.m.,  
 Deck Stage,  
 Deck 11, Midship**

Afternoon	1:45	2:00	2:15	2:30	2:45	3:00	3:15	3:30	3:45	4:00	4:15	4:30	4:45	5:00	5:15	5:30	5:45	6:00	6:15	6:30	6:45											
FUNNELVISION	Virtual Tour	<b>All ship services will be suspended during this time for the mandatory Boat Drill scheduled for 4:00 p.m.</b>  Please refer to the posted drill instructions prior to heading to your Assembly Station.											The Emperor's New Groove (G) FunnelVision																			
MOVIES													Brave (PG) <b>DOLBY 3D</b> Buena Vista Theatre >7:11 p.m.																			
CHARACTER													Sailing Away Deck Stage, Deck 11, Midship										Mickey Mouse Deck 4, Balcony									
FUN FOR ALL AGES													Ship Tour (Earlier tour also at 1:00 p.m.) Preludes, Deck 3, Forward				Port & Shopping Show Buena Vista Theatre							Walt Disney Theatre								
		DJ Marius Deck Stage, Dk 11, Mid		Disney Vacation Club Member Celebration D Lounge								Live Music with Electrix Duo Lobby Atrium - Live Music																				
	Sunday NFL Football 687 Pub (Subject to satellite availability and blackouts)																															
ADULTS	Longest Drive Competition Golf Simulator											Spa Raffle Senses Spa & Salon																				
VIBE	Open House											Chillin' in Vibe																				
EDGE	Open House											Chillin' in Edge																				
OCEANEER LAB	Open House and Registration											Open for Secured Activities																				
OCEANEER CLUB	Open House and Registration											Open House																				



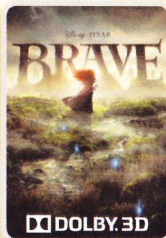
Evening	7:00	7:15	7:30	7:45	8:00	8:15	8:30	8:45	9:00	9:15	9:30	9:45	10:00	10:15	10:30	10:45	11:00	11:15	11:30	11:45	12:00												
FUNNELVISION	NFL: San Diego Chargers vs. New York Jets FunnelVision (Subject to satellite availability and blackouts)											Lincoln (PG-13) Buena Vista Theatre > 1:02 a.m.																					
MOVIES	Brave (PG) <b>DOLBY 3D</b> Buena Vista Theatre											Mickey Dk 4, Balcony																					
CHARACTER	Tree Lighting Decree Lobby Atrium				Chip & Dale Preludes				Minnie Atrium				Goofy Atrium				Chip & Dale Atrium																
FUN FOR ALL AGES	Bingo Pre Sales		Diamond Bingo D Lounge		Walt Disney Theatre											Live Music with Electrix Duo Lobby Atrium - Live Music				D Lounge				D Lounge									
	Family Dance Party Evolution				NFL: San Diego Chargers vs. New York Jets 687 Pub (Subject to satellite availability and blackouts)											Club 18*21 Ice Breaker Evolution				Knight Magic Evolution - Illusionists				Evolution Nightclub with Guest DJ Automatic Evolution									
ADULTS	Enharmoniq LIVE District Lounge - Live Music											Whiskey Tasting (21+) (Meridian Pre Book/Nom Fee)										Enharmoniq LIVE District Lounge - Live Music				Enharmoniq LIVE District Lounge - Live Music				Enharmoniq - After Dark District Lounge - Live Music			
VIBE	Hangin' in Vibe											The Download										Zombified											
EDGE	Hangin' in Edge											Profiles				Ice Breakers				Taking it to The Edge				Choose Your Cruise				Hangin' in Edge					
OCEANEER LAB	Open for Secured Activities - until 1:00 a.m.											Choose Your Cruise										POTC: Tides of Fortune				Magic Playfloor							
OCEANEER CLUB	Open for Secured Activities											Aloha Luau				Choose Your Cruise				Magic Playfloor													

FOLD along the dotted lines and take me with you so you don't miss any of the fun!  
  
 Symbol for activities that will be repeated during the cruise  
  
 FOLD  
  
 IN THE SPOTLIGHT SERIES  
 SOAVE ITI SERIES  
  
 HUMP UP! SERIES  
 CREATE & INVENT SERIES  
 OPEN HOUSE  
  
 CLUBHOUSE SERIES  
 STOREROOM SERIES



SUNDAY, DECEMBER 22, 2012 - PORT CANAVERAL

# BUENA VISTA THEATRE



5:30 p.m. & 8:15 p.m.  
Run Time: 1 hr 41 mins  
Rating: PG



10:30 p.m.  
Run Time: 2 hr 32 min  
Rating: PG-13

## Character Appearances

### DONALD DUCK

Deck 4, Balcony  
12:00 p.m. & 1:00 p.m.  
Preludes  
7:45 p.m. & 9:30 p.m.

### PLUTO

Deck 4, Balcony  
12:30 p.m. & 1:30 p.m.  
Lobby Atrium  
7:30 p.m. & 9:45 p.m.

### MICKY MOUSE

Deck 4, Balcony - 5:30 p.m.,  
7:45 p.m. & 9:45 p.m.

### AURORA

Preludes - 5:45 p.m.

### CHIP & DALE

Preludes - 8:15 p.m.  
Lobby Atrium - 10:30 p.m.

### MINNIE MOUSE

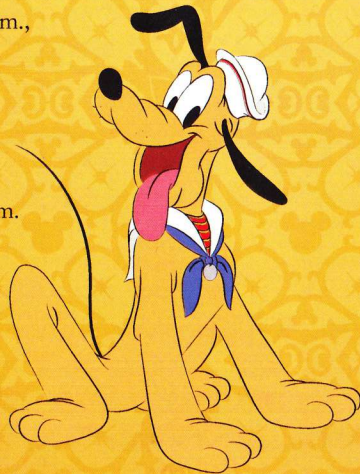
Lobby Atrium  
7:45 p.m. & 9:30 p.m.

### BELLE

Lobby Atrium  
7:45 p.m. & 9:30 p.m.

### GOOFY

Lobby Atrium - 10:15 p.m.



For details of daily Disney character appearances, refer to the character line on your Navigator Grid, or the digital character board in the Lobby Atrium.

## YOUTH ACTIVITIES THEMED EXPERIENCES

**CLUBHOUSE SERIES**  
focuses on movement and features content which appeals to younger children.

**JUMP UP! SERIES**  
includes large ground games & movement-oriented activities.

**IN THE SPOTLIGHT SERIES**  
focuses on children's stage presence with lots of activities and enthusiasm.

**STORYBOOK SERIES**  
is designed with a strong connection to the Disney classic stories.

**CREATE & INVENT SERIES**  
will have a tactile focus allowing children to create and admire their work.

**SOLVE IT! SERIES**  
are less active, but will challenge children with problem/solutions-based activities.

### OPEN HOUSE

are activities for families, adults and children of all ages to enjoy together.

## SHIP DIRECTORY

### YOUTH ACTIVITIES

DISNEY'S OCEANEER CLUB	DECK 5, MID	6:45 P.M. - 12:00 MID.
DISNEY'S OCEANEER LAB	DECK 5, MID	5:30 P.M. - 1:00 A.M.
EDGE	DECK 13, MID	6:00 P.M. - 1:00 A.M.
VIBE	DECK 4, FWD	6:00 P.M. - 2:00 A.M.
IT'S A SMALL WORLD NURSERY	DECK 5, MID	5:30 P.M. - 12:00 MID.

### RECREATION

AQUADUCK	DECK 12, MID	12:00 P.M. - 3:00 P.M. 4:30 P.M. - 11:00 P.M.
DONALD'S POOL	DECK 11, MID	11:45 A.M. - 3:30 P.M. 5:30 P.M. - 12:00 MID.
GOLF/SPORTS SIMULATORS	DECK 13, AFT	12:00 P.M. - 3:30 P.M. 4:30 P.M. - 6:00 P.M.
GOOFY & MAX'S MINI GOLF	DECK 13, AFT	11:00 A.M. - 10:00 P.M.
GOOFY'S SPORTS DECK	DECK 13, AFT	11:30 P.M. - 6:00 P.M.
MICKEY'S POOL	DECK 11, MID	11:45 A.M. - 12:00 MID.
MICKEY'S SLIDE	DECK 11, MID	12:30 P.M. - 3:30 P.M. 4:30 P.M. - 6:00 P.M.
MIDSHIP DETECTIVE AGENCY	DECK 5, MID	11:00 A.M. - 11:00 P.M.
NEMO'S REEF	DECK 11, MID	12:00 P.M. - 3:30 P.M. 4:30 P.M. - 6:00 P.M.
PORT ADVENTURES DESK	DECK 5, MID	12:00 P.M. - 3:30 P.M. 4:30 P.M. - 10:30 P.M.
QUIET COVE POOL	DECK 11, FWD	12:00 P.M. - 12:00 MID.
SENSES FITNESS CENTER	DECK 11, FWD	12:00 P.M. - 10:00 P.M.

### GENERAL INFORMATION

ARR-CADE	DECK 11, AFT	24 HOURS
DISNEY VACATION CLUB	DECK 4, MID	5:00 P.M. - 10:00 P.M.
FUTURE CRUISE DESK	DECK 4, MID	6:00 P.M. - 8:00 P.M.
GUEST SERVICES	DECK 3, MID	24 HOURS
HAIRBRAIDING	DECK 11, MID	4:30 P.M. - 10:00 P.M.
HEALTH CENTER	DECK 1, MID	4:30 P.M. - 7:00 P.M.
PORT & SHOPPING DESK	DECK 4, MID	6:00 P.M. - 8:00 P.M. 9:30 P.M. - 10:30 P.M.
PRELUDES	DECK 3, FWD	5:45 P.M. - 6:30 P.M. 8:00 P.M. - 8:45 P.M.
SENSES SPA AND SALON	DECK 11, FWD	12:00 P.M. - 10:00 P.M.
SHUTTERS PHOTO GALLERY	DECK 4, MID	7:00 P.M. - 11:00 P.M.

### SHOPPING

MICKY'S MAINSAIL	DECK 3, FWD	6:00 P.M. - 10:30 P.M.
SEA TREASURES	DECK 3, FWD	6:00 P.M. - 10:30 P.M.
VISTA GALLERY	DECK 4, MID	6:00 P.M. - 10:30 P.M.
WHITCAPS	DECK 3, FWD	6:00 P.M. - 10:30 P.M.
WHOZITS & WHATZITS	DECK 11, MID	6:00 P.M. - 10:00 P.M.

### DINNER MENU

Animator's Palate: Pacific Rim Cuisine  
Enchanted Garden: Continental Market  
Royal Palace: French Dinner  
Dining Times: 5:45 p.m. & 8:15 p.m.

### DRINK OF THE DAY

Paradise Cocktail (Alcoholic)  
Espresso Chiller (Non Alcoholic)

### WEATHER FORECAST

Sunday: Cloudy  
High: 61°F/16°C  
Monday: Partly Sunny  
High: 73°F/23°C

Evening Attire: Cruise Casual

## DINING & LOUNGES

### LUNCH

CABANAS FOOD COURT (PORT SIDE)	DECK 11, AFT	11:30 A.M. - 3:15 P.M.
CABANAS FOOD COURT (STARBOARD)	DECK 11, AFT	12:00 P.M. - 3:00 P.M.
ENCHANTED GARDEN	DECK 2, MID	12:15 P.M. - 2:00 P.M.
FILMORE'S FAVORITES	DECK 11, MID	12:00 P.M. - 7:00 P.M.
LUIGI'S PIZZA	DECK 11, MID	12:00 P.M. - 6:00 P.M.
TOW MATER'S GRILL	DECK 11, MID	12:00 P.M. - 6:00 P.M.

### DINNER

ANIMATOR'S PALATE	DECK 3, AFT	5:45 P.M. & 8:15 P.M.
ENCHANTED GARDEN	DECK 2, MID	5:45 P.M. & 8:15 P.M.
ROYAL PALACE	DECK 3, MID	5:45 P.M. & 8:15 P.M.
TOW MATER'S GRILL	DECK 11, MID	6:00 P.M. - 11:00 P.M.
PALO & REMY (18+)	DECK 12, AFT	6:00 P.M. - 9:00 P.M.

(RESERVATION REQUIRED & COVER CHARGE APPLICABLE. DIAL #7-9734)

### LATE NIGHT SNACKS

LUIGI'S PIZZA	DECK 11, MID	9:30 P.M. - 12:00 MID.
THE DISTRICT	DECK 4, AFT	10:45 P.M. - 11:45 P.M.

### ADDED FEATURES


BEVERAGE STATION	DECK 11, AFT	24 HOURS
EYE SCREAM	DECK 11, MID	12:00 P.M. - 11:00 P.M.
ROOM SERVICE	DIAL 0	24 HOURS

## ENTERTAINMENT - LOUNGES - BARS

Adults must be 21 and older to consume alcoholic beverages.

687 PUB	DECK 4, AFT	12:00 P.M. - 9:00 P.M.
687 PUB (18+)	DECK 4, AFT	9:00 P.M. - 12:00 MID.
BON VOYAGE	DECK 3, MID	11:30 A.M. - 11:00 P.M.
COVE BAR (18+)	DECK 11, FWD	12:00 P.M. - 11:00 P.M.
COVE CAFE (18+)	DECK 11, FWD	7:00 A.M. - 6:00 P.M.
CURRENTS	DECK 13, FWD	12:00 P.M. - 11:00 P.M.
D LOUNGE	DECK 4, MID	SHOWTIMES
DISTRICT LOUNGE	DECK 4, AFT	12:00 P.M. - 9:00 P.M.
DISTRICT LOUNGE (18+)	DECK 4, AFT	9:00 P.M. - 12:00 MID.
EVOLUTION (18+)	DECK 4, AFT	10:00 P.M. - 2:00 A.M.
FROZONE TREATS	DECK 11, MID	11:30 A.M. - 11:00 P.M.
MERIDIAN (18+)	DECK 12, AFT	5:00 P.M. - 12:30 A.M.
OUTLOOK	DECK 14, MID	SUNSET TIMES
PINK (18+)	DECK 4, AFT	5:00 P.M. - 12:30 A.M.
SKYLINE (18+)	DECK 4, AFT	5:00 P.M. - 1:00 A.M.
VISTA CAFE	DECK 4, MID	11:30 A.M. - 11:00 P.M.
WAVES	DECK 12, AFT	12:00 P.M. - 7:00 P.M.

Consumers who order raw or partially cooked, ready-to-eat food of animal origin, are hereby informed that the food is not sufficiently cooked to ensure its safety.



## GOOFY'S SPORTS Digital Simulators

**Sports Simulator**  
(Basketball, Baseball, Hockey, or Soccer)  
\$12 / half hr, \$20 / hr

**Golf Simulator**  
\$25 / half hr, \$45 / hr

Reservations can be made at the Port Adventures Desk, Deck 5, Midship or at the Simulators, Deck 13, Aft