

Disney MAGIC

— PERSONAL NAVIGATOR —

NASSAU: TUESDAY, JULY 3, 2012

Sunrise: 6:24 a.m. Sunset: 8:03 p.m.

Evening Attire: Pirate or Cruise Casual

All Ashore: 9:30 a.m. All Aboard: 6:00 p.m.

WALT DISNEY THEATRE

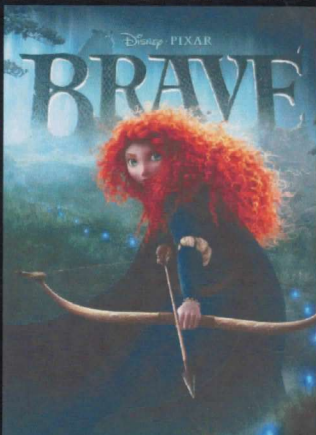
Walt Disney
Movie PremEar

5:30 P.M.
AND 8:00 P.M.

DOLBY 3D

RATED
PG

Assistance available at the entrance to the Walt Disney Theatre
30 minutes prior to show time.



WELCOME TO NASSAU

PIRATE FUN

3:30 p.m., Promenade Lounge

Family Pirate Crafts

4:30 p.m., Promenade Lounge

Pirate Trivia Quest

9:25 p.m., Goofy's Pool Stage

The Challenge of Davy Jones

9:45 p.m., Goofy's Pool Stage

Pirates in the Caribbean Deck Party

A PIRATE'S LIFE FOR ME

7:30 p.m., Studio Sea

Aargh you ready to be a pirate? Come spin the
"Wheel of Destiny" and capture the Pearl.

ADULT CABARET: JOHN CASSIDY

11:00 p.m., Rockin' Bar D (Guests 18 years and older)

Featuring the Physical Comedy of John Cassidy in this
adult-exclusive show.

TRAVEL SAFETY TIPS

While you will find many great experiences in Nassau, there have been reports of increased crime, including assaults and robberies involving tourists in the area. As in any large city, you'll want to take some basic precautions to make the most of your time ashore.

- Be aware of your surroundings at all times, just as you would in your normal daily activities.
- Avoid short cuts, narrow alleys or poorly lit streets. We recommend that guests only visit the downtown shopping areas and other tourist locations.
- Leave valuables in your room safe and avoid carrying large amounts of cash. Exercise caution when using ATMs. Cameras and handbags should be carried out of sight and secured to your person with a strap.
- Leave passports, air transportation tickets and other travel documents in your room safe. When going ashore, each adult is required to carry a Driver's license, copy of passport or other government-issued photo ID.
- If traveling by taxi, use only licensed taxi operators. In general, use the same level of precaution you would use in any tourist destination.
- Most crimes are easier to commit in dark unlit areas. You should stay out of these types of areas and consider returning to the ship before nightfall. If you stay out at night, please be extra vigilant about your personal safety.

PORT AGENT - NASSAU: R.H. Curry & Company; 303 Shirley St., P.O. Box N8168; Nassau, Bahamas; 242-322-8681 or 242-357-9218

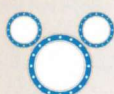
BINGO

Brave Double Up Jackpot Bingo

7:15 p.m., Rockin' Bar D

Special double up session: All electronic cards purchased will be doubled. Four CASH prizes and special "Brave" gifts are up for grabs. The Snowball Jackpot is over \$2,000 and could be won at any time! First game starts at 7:30 p.m.

mickey's mates



So You Want To Be A Pirate?

Come to Mickey's Mates and get
your outfit and accessories
for tonight's deck party.
Costumes, shirts, hats,
bandanas and much more available.



Pirates IN the Caribbean Deck Party

All you Buccaneers!
Join Goofy and his Pirate friends
as you shake your bones all
night long. There be surprises; just
don't invite Captain Hook

(Weather Permitting).

9:45 p.m. Decks 9 and 10
mark the spot.

Viewing areas located Deck 9 Midship port side gazebo
and next to Pinocchio's Pizzeria port side.

DINNER MENU Pirates IN the Caribbean

DRINK OF THE DAY Sunken Treasure (Alcoholic)
Pirates Surprise (Non Alcoholic)

WEATHER FORECAST Today: Partly Cloudy
High: 84°F/29°C

IMPORTANT NUMBERS

| | |
|-------------------|--------|
| Fire / Security | 7-3001 |
| Medical EMERGENCY | 7-3000 |
| Health Center | 7-1923 |

| | | | | | | | | | | | | | | | | | | | | | | | | | | |
|------------------------------|---|------|---|--|---|------|-----------------------------|-------|---|-------|--|-------|---|-------|--|-------|---|-------|---|-------|--|------------|-------------------------------------|--|--|--|
| | 8:30 | 8:45 | 9:00 | 9:15 | 9:30 | 9:45 | 10:00 | 10:15 | 10:30 | 10:45 | 11:00 | 11:15 | 11:30 | 11:45 | 12:00 | 12:15 | 12:30 | 12:45 | 1:00 | 1:15 | 1:30 | | | | | |
| SPECIAL | | | | | Movie: Hercules(G) Funnel Vision | | | | | | Movie: Atlantis (G) Funnel Vision | | | | | | Movie: Peter Pan (G) Funnel Vision >2:17pm | | | | | | | | | |
| CHARACTER | Minnie Lobby | | | | Mickey Lobby | | | | | | | | | | | | | | | | | | | | | |
| BUENA VISTA THEATRE, Dk.5 | | | | | | | | | | | | | | | Real Steel (PG-13) Duration: 2 hours, 7 minutes | | | | | | | >2:07 p.m. | | | | |
| FAMILY | Last Minute Shopping Advice with Summer Shopping Guide Desk, Deck 3, Mid | | | | | | | | | | | | | | | | | | | | | | | | | |
| FAMILY | Toddler Time Promenade Lounge | | | Shipboard announcements can be heard by tuning into channel 201 on your stateroom television. | | | | | | | | | Cruisin' For Trivia Promenade Lounge | | | | | | | | | | | | | |
| FAMILY | | | | Edge Open House Edge | | | | | | | | | | | | | | | | | | | | | | |
| ADULTS | Friends of Bill W. Animator's Palate | | Books and magazines available at Cove Cafe. | | | | | | | | | | | | | | | | | | | | | | | |
| ADULTS | Stretch & Relax ~7:30am Vista Spa | | Boot Camp ~8:00am Vista Spa | | | | | | | | | | | | | | | | | | | | | | | |
| Vibe, Deck 11 | | | | | | | | | | | | | | | Matinee Movie | | | | Lizzard Key Chains | | | | | | | |
| Edge, Deck 2 | | | | | YA Open House | | | | Guitar Hero Challenge | | | | Just Dance | | Button Monsters | | Ultimate Scavenger Hunt | | | | | | | | | |
| Out and About | | | | | ♥ YA Open House Edge | | | | | | | | | | | | | | | | | | | | | |
| Oceaneer Lab, Deck 5 | Hangin' in the Lab | | | | Story Time | | ♥ Animation Antics | | ♥ Wii Sing It | | | | | | Lunch | | Top This! | | | | | | | | | |
| | ♥ Oceaneer Rangers | | | | Make an Instrument | | | | Board Games Galore | | | | | | | | | | ♥ Pathfinders | | Cards | | | | | |
| Oceaneer Club, Deck 5 | ♥ Rise and Shine its Playtime | | | | ♥ Parachute Games | | Cartoon Corner | | Mickey Crafts | | Transition | | | | | | Lunch in the Lab | | ♥ Playdough Fun | | Einstein | | | | | |
| | Guess Who? in Captain's Closet | | | | All About Me Crafts | | | | Afternoon Toons | | Transition | | | | | | | | Maraca Making | | | | | | | |
| | 1:45 | 2:00 | 2:15 | 2:30 | 2:45 | 3:00 | 3:15 | 3:30 | 3:45 | 4:00 | 4:15 | 4:30 | 4:45 | 5:00 | 5:15 | 5:30 | 5:45 | 6:00 | 6:15 | 6:30 | 6:45 | | | | | |
| SPECIAL | Movie: Peter Pan (G) Funnel Vision <1:00pm | | | | | | | | Movie: Muppets Treasure Island (G) Funnel Vision >4:39pm | | | | | | Hook, Smee Lobby | | Jack Sparrow Deck 4, Mid | | Peter Pan Lobby | | Chip & Dale Lobby | | Movie: Jump In (G) Funnel Vision | | | |
| CHARACTER | Please note: To avoid disappointment, arrive at the start time of character appearances. | | | | | | | | | | | | Chip, Dale Lobby | | Minnie Preludes | | Stitch Lobby | | Mickey Preludes | | Dale Lobby | | Minnie Preludes | | | |
| BUENA VISTA THEATRE, Dk.5 | | | | | The Avengers (PG-13) Duration: 2 hours, 23 minutes | | | | | | | | | | | | Brave (PG) Duration: 1 hour, 41 minutes | | | | | | | | | |
| FAMILY | | | | | Gameshow: Disney Wheel Promenade Lounge | | | | Chip It Golf Lobby (12 & Older) | | | | | | | | War Disney Prem Ear Brave Walt Disney Theatre DOLBY 3D | | | | | | | | | |
| FAMILY | Paper Plane Making Promenade Lounge | | | | | | | | Family Crafts: Pirate Crafts Promenade Lounge | | | | | | | | | | | | | | | | | |
| FAMILY | Wide World of Sports Deck is open for your enjoyment Basketball courts, ping pong tables and more. | | | | | | | | | | | | Pirate Trivia Quest Promenade Lounge | | | | Midtown Duo Promenade Lounge | | Pirate Trivia Challenge Promenade Lounge | | | | | | | |
| ADULTS | Books and magazines available at Cove Cafe and Promenade Lounge. | | | | | | | | | | Facial Workshop Vista Spa | | | | | | | | | | | | | | | |
| ADULTS | | | | | | | | | Informal Card Play Diversions | | Singles Mingle Cove Cafe | | Pain, Pain Go Away ~4:30pm Studio Sea | | College Club Wii Challenge Diversions (18-21 yrs) | | | | Pub Quiz Diversions | | | | | | | |
| Vibe, Deck 11 | Key | | Madden Challenge | | | | Scene It | | | | Disney Trivia | | | | 4 Square | | Apples to Apples | | | | | | | | | |
| Edge, Deck 2 | Hunt | | Think Fast | | | | Stained Glass Windows | | | | Lava Flow | | | | Tissue Paper Crafts | | | | Wii Challenge | | Design your own Painting | | | | | |
| Out and About | | | | | | | | | | | | | ♥ Ping Pong Sports Deck | | | | | | ♥ Hoop it Up Wide World of Sports Deck | | | | | | | |
| Oceaneer Lab, Deck 5 | Paper Planes | | ♥ Digital Postcards | | | | Giant Murals | | | | Nemos Challenges | | Transition | | ♥ Flubber YA Open House | | ♥ Face Painting YA Open House | | ♥ Origami YA Open House | | | | | | | |
| | Cards | | ♥ All About Me | | | | Mail a Postcard | | | | Karaoke | | | | Transition | | ♥ Board Games Galore YA Open House | | ♥ Say What? YA Open House | | ♥ Create Your Own Pirate Ship YA Open House | | | | | |
| Oceaneer Club, Deck 5 | ♥ Little Einsteins | | Coloring Fun | | ♥ Hats off to Peter Pan | | Games Galore | | Story Time | | ♥ Pixie Hollow Crafts | | | | | | Dinner | | Pirate Fun | | | | | | | |
| | Wii Bowling | | | | Slide Fun | | ♥ Let's Build a Fort! | | ♥ Where's Tink? | | Gaga Ball | | Potato Heads | | | | | | Pirate Crafts | | | | | | | |
| | 7:00 | 7:15 | 7:30 | 7:45 | 8:00 | 8:15 | 8:30 | 8:45 | 9:00 | 9:15 | 9:30 | 9:45 | 10:00 | 10:15 | 10:30 | 10:45 | 11:00 | 11:15 | 11:30 | 11:45 | 12:00 | | | | | |
| SPECIAL | Jack Sparrow Deck 4, Mid | | Pin Station Deck 4, Midship | | Peter Pan Lobby | | Jack Sparrow Deck 4, Mid | | Challenge of Davy Jones Goofy's Pool Stage | | Pirates IN the Caribbean Deck Party Goofy's Pool Stage | | | | Movie: Pirates of the Caribbean: Curse of The Black Pearl Funnel Vision (PG-13) >1:05 a.m. | | | | | | | | | | | |
| CHARACTER | Hook, Smee Lobby | | Stitch Lobby | | Mickey Preludes | | Chip, Dale Lobby | | Stitch Lobby | | | | | | Please Note: All characters appearances are subject to change without prior notice. | | | | | | | | | | | |
| BUENA VISTA THEATRE, Dk.5 | | | | | Brave (PG) Duration: 1 hour, 41 minutes | | | | | | | | | | | | The Muppets (PG) Duration: 2 hour, 7 minutes | | | | | | | | | |
| FAMILY | | | | | A Pirate's Life For Me Studio Sea | | | | War Disney Prem Ear Brave Walt Disney Theatre DOLBY 3D | | | | Pirates IN the Caribbean Deck Party Goofy's Pool Stage | | | | | | | | | | | | | |
| FAMILY | Bingo Card Pre Sales | | Brave Double Up Bingo Rockin' Bar D | | | | | | | | | | | | | | Midtown Duo Promenade Lounge | | | | | | | | | |
| FAMILY | | | | | Family Dance Party Promenade Lounge | | | | Pirate Trivia Challenge Rockin' Bar D | | Challenge of Davy Jones Goofy's Pool Stage | | Midtown Duo Promenade Lounge | | Movie: Pirates of the Caribbean: Curse of The Black Pearl Funnel Vision (PG-13) >1:05 a.m. | | | | | | | | | | | |
| ADULTS | Couples Massage Workshop Vista Spa | | | | | | | | | | | | Video Dance Rockin' Bar D | | | | Cabaret: John Cassidy Rockin' Bar D | | | | | | | | | |
| ADULTS | | | | | Micah Hulscher LIVE Sessions | | | | | | | | Music of Memphis Sessions | | | | Micah Hulscher Sessions | | Late Night Piano Sessions | | | | | | | |
| Vibe, Deck 11 | Ninja | | | | Kinnect Adventures | | | | Pirate Party Prep | | | | Pirate Deck Party 'til 11 p.m./Pirate Life for Me 11:30 p.m. 'til 12 a.m./ Studio Sea Party 'til 2 a.m. | | | | | | | | | | | | | |
| Edge, Deck 2 | Pirate Prep | | | | Pirate Crafts | | | | Pirate Flags | | Pirate Scavenger Hunt | | Pirate Deck Party Meet at Edge | | | | Pirate Movie Night | | Pirates Life For Me | | Open 'til 1am | | | | | |
| Out and About | | | | | | | | | | | | | ♥ Pirate Deck Party Meet at Edge | | | | | | ♥ Pirates Life For Me Studio Sea | | | | | | | |
| Oceaneer Lab, Deck 5 | ♥ Origami Creations YA Open House | | ♥ Pirate Crafts YA Open House | | Transition | | Pirate Games | | Mario Kart | | ♥ Pictionary | | | | Bingo | | | | | | | | | | | |
| | ♥ Animation Antics YA Open House | | ♥ Face Painting YA Open House | | Transition | | ♥ Pirates Life For Me | | Transition | | ♥ Guess Who! | | ♥ Ship Factor | | | | Chillin' in the Lab | | | | | | | | | |
| Oceaneer Club, Deck 5 | Pirate Fun | | ♥ Pirate Face Painting | | Movie Time | | | | | | | | Oceaneer Club closes at 10:00 p.m. | | | | | | | | | | | | | |
| | Pirate Crafts | | ♥ So You Want To Be A Pirate? | | Coloring Fun | | | | | | | | | | | | | | | | | | | | | |

DINE & PLAY

A convenience for families dining at 8:15 p.m., our Youth Activities Counselors will be available at 9:15 p.m. at the entrance of Lumière's, Parrot Cay and Animator's Palate dining rooms to bring registered children to join the fun in the Oceaneer Club and Oceaneer Lab.



FLOUNDER'S REEF NURSERY

Deck 5 Midship (7-5864) Open 9:00am -11:30pm



OCEANEER CLUB 3-12 YEAR OLDS

Deck 5 Midship (7-1440) Open 9:00am -10:00pm

PARACHUTE GAMES - 10:00 AM Doodles of fun playing with parachutes.

HATS OFF TO PETER PAN - 2:45 PM Pretend to be from Neverland as Peter takes you through games.

SO YOU WANT TO BE A PIRATE? - 7:30 PM Train to be a young buccaneer on the high seas.



OCEANEER LAB 3-12 YEAR OLDS

Deck 5 Midship (7-1445) Open 9:00am -12:00am

OCEANEER RANGERS - 9:00 AM Put your teamwork to the test in this challenge

PATHFINDERS - 1:00 PM A path has been chosen for you, can you find it?

PIRATES LIFE FOR ME - 8:45 PM Come and play this exiting game show where everything is about pirates. AARGH!!!!

YOUTH ACTIVITIES OPEN HOUSE

Open House is an opportunity for all to come and participate in a variety of exciting activities and free time in the Oceaneer Club, Lab and Edge throughout the cruise. During these times secured programming will still be offered in the other venue for those looking to check their children into care.



YA OPEN HOUSE OCEANEER LAB

Deck 5 Midship (7-1440) Open 5:00pm -8:30pm

FLUBBER - 5:00 PM Encounter solid, liquid, gas and make your own batch of "Flubber-like Goo" in this activity where you're the apprentice.



ACTIVITIES FOR 11-14 YEAR OLDS

Deck 2, Midship (7-5816) Open 9:00am - 1:00am

PIRATE'S LIFE FOR ME

11:30 p.m. - Studio Sea

Come and play this exiting trivia game where everything is about pirates. AARGH!!!!

ACTIVITIES FOR 14-17 YEAR OLDS

Deck 11 Midship (7-18517) Open 9:00am - 2:00am

PIRATE DECK PARTY

Join your friends for a Pirate Party up on deck!

INFORMATION ABOUT PORT CANAVERAL

Important information regarding procedures for Port Canaveral and your optional journey to and from Walt Disney World will be covered in this Port Canaveral informational broadcast. The broadcast will be shown continuously on channel 254 of your stateroom television for your convenience.

FUN FOR THE WHOLE FAMILY

FAMILY CRAFTS: PIRATE CRAFTS

3:30 p.m., Promenade Lounge

Yo ho me hearties, tis' time to get crafty and put your creative skills to use. Create your very own pirate crafts in preparation for tonight's festivities!

PIRATE TRIVIA QUEST

4:30 p.m., Promenade Lounge

Ahoj mateys, how much do ye know about pirates? Come and test ye knowledge at this fun Pirate Trivia Quest.

LIVE MUSIC WITH MIDTOWN

5:15, 7:30, 9:45, and 10:45 p.m., Promenade Lounge

Our duo, Midtown, plays live for your listening and dancing pleasure.

BRAVE DOUBLE UP JACKPOT BINGO

7:15 p.m., Rockin' Bar D

Special double up session: All electronic cards purchased will be doubled. Four CASH prizes and some special "Brave" gifts are up for grabs. The Snowball Jackpot is growing and could be won at any time! First game starts at 7:30 p.m.

A PIRATE'S LIFE FOR ME

7:30 p.m., Studio Sea

Aargh you ready to be a pirate? Come spin the "Wheel of Destiny" and capture the Pearl.

PIRATES OF THE CARIBBEAN: CHALLENGE OF DAVY JONES

9:25 p.m., Goofy's Pool Stage

Join us on deck for a brand new interactive video game experience. You'll be the crew as we find out who is the better captain... Captain Jack or Captain Barbossa.



CHARACTER APPEARANCES

PIRATE NIGHT: Come and see Pirate Stitch in the Lobby Atrium 5:15 p.m., 7:15 p.m. and 8:15 p.m.

Also, don't miss Captain Jack Sparrow in the Lobby Atrium, Deck 4 Midship at 5:15 p.m., 7:00 p.m. and 8:15 p.m.

PIRATES IN THE CARIBBEAN DECK PARTY:

Join the world-famous Disney Characters on deck for tonight's Pirates IN The Caribbean Deck Party.



ADULT EXCLUSIVE ENTERTAINMENT

(Guests 18 years and older)

COLLEGE CLUB Wii CHALLENGE

5:30 p.m., Diversions

For all those Guests 18-21 years of age, join us and test your skills for the College Club Wii Challenge.

PUB QUIZ CHALLENGE

6:30 p.m., Diversions

Join us as we test your general knowledge against your fellow Guests at our Pub Quiz Challenge.

MICAH HULSCHER

7:30, 9:30, 10:30 and 11:30 p.m., Sessions

Enjoy a relaxing evening with Micah Hulscher at the Piano and enjoy a special "Music of Memphis" set at 10:30 p.m.

ADULT CABARET: JOHN CASSIDY

11:00 p.m., Rockin' Bar D

Featuring the Physical Comedy of John Cassidy in this adult-exclusive show.

MORE TO ENJOY WHILE ONBOARD

VISTA GALLERY

Come check out our limited edition Pixar Collection. Artwork available from Toy Story, The Incredibles, Up and many more.



GET THE PICTURE!

Remember your Disney Cruise when you take home your professional photos digitally. Visit the interactive photo kiosks on Deck 3 & 4 Aft by Shutters Photo Gallery to find out more and 'Get The Picture!'



BOOK ANOTHER DCL VACATION TODAY!

Today is a great day to visit the Future Cruise Sales desk to find out how you can save 10%, receive up to a \$200 onboard credit, and pay a reduced deposit on your next cruise! Check out Channel 255 for more info.

SHOPPING IN NASSAU

Today is shopping day! The world famous tax and duty free shopping is just steps away from where we dock. Visit Summer at her desk, Deck 3 Midship from 8:30 - 9:30 a.m. for last-minute shopping tips, coupons and VIP cards. Don't forget your shopping maps!



FIND YOUR VACATION PARADISE

Visit the Disney Vacation Club Desk on Deck 4, Midship, to find out more about Disney's best kept secret.



PAMPER PACKAGE

Enjoy a 50 minute full body massage & a 25 minute facial. Relax in the Rainforest with a glass of champagne & some chocolate treats. \$149 for 75min.

OPERATING HOURS

| | | | |
|---------------------------|------------------------|--------------------------|------------------------|
| Disney Vacation Club Desk | 5:30 p.m. - 10:00 p.m. | Port Adventures Desk | 8:00 a.m. - 11:00 a.m. |
| Future Cruise Sales Desk | 9:00 a.m. - 10:00 a.m. | | 7:00 p.m. - 8:30 p.m. |
| | 4:00 p.m. - 6:00 p.m. | Port Shopping Desk | 8:30 a.m. - 9:30 a.m. |
| | 7:30 p.m. - 8:30 p.m. | | 8:00 p.m. - 8:30 p.m. |
| Goofy's Pool | 6:00 a.m. - 8:30 p.m. | Preludes (snacks) | 5:45 p.m. - 6:30 p.m. |
| Guest Services Desk | 24 Hours | | 8:00 p.m. - 8:45 p.m. |
| Health Center | 9:30 a.m. - 11:00 a.m. | Quarter Masters Arcade | 24 Hours |
| | 4:30 p.m. - 7:00 p.m. | Quiet Cove Pool | 6:00 a.m. - 12:00 mid |
| Mickey's Mates | 6:30 p.m. - 11:00 p.m. | Shutters Photo Gallery | 6:00 p.m. - 10:30 p.m. |
| Mickey's Pool | 8:00 a.m. - 8:30 p.m. | Treasure Ketch | 6:30 p.m. - 11:00 p.m. |
| Mickey's Slide | 11:30 a.m. - 5:30 p.m. | Up Beat Duty Free | 6:30 p.m. - 11:00 p.m. |
| Mickey's Splash Zone | 8:00 a.m. - 8:00 p.m. | Vista Spa and Salon | 8:00 a.m. - 10:00 p.m. |
| | | Vista Spa Fitness Center | 6:30 a.m. - 10:00 p.m. |

Dining Hours

Consuming raw or undercooked meats, seafood, shellfish, eggs, milk, or poultry may increase your risk for foodborne illness, especially if you have certain medical conditions.

BREAKFAST

| | |
|------------------------|------------------------|
| Cove Cafe | 6:45 a.m. |
| Goofy's Galley | 6:45 a.m. - 9:30 a.m. |
| Lumière's (A-la-Carté) | 8:00 a.m. - 9:30 a.m. |
| Parrot Cay (Buffet) | 8:00 a.m. - 10:45 a.m. |
| Topsider (Buffet) | 7:15 a.m. - 10:30 a.m. |

LUNCH

| | |
|------------------------|------------------------|
| Goofy's Galley | 10:45 a.m. - 6:30 p.m. |
| Lumière's (A-la-Carté) | 12:00 noon - 1:30 p.m. |
| Pinocchio's Pizzeria | 10:45 a.m. - 6:00 p.m. |
| Pluto's Dog House | 10:45 a.m. - 6:00 p.m. |
| Topsider (Buffet) | 12:00 noon - 2:00 p.m. |

DINNER

| | |
|------------------------------|-----------------------|
| Animator's Palate* | 5:45 p.m. & 8:15 p.m. |
| Lumière's* | 5:45 p.m. & 8:15 p.m. |
| Parrot Cay* | 5:45 p.m. & 8:15 p.m. |
| Pluto's Dog House | 6:00 p.m. - 9:30 p.m. |
| Topsider (A-la-Carté Dinner) | 6:30 p.m. - 8:30 p.m. |

* Pre-arranged seating assignments

ON DECK

| | |
|----------------------|------------------------|
| Cove Cafe | 6:45 a.m. - 12:00 mid |
| Pinocchio's Pizzeria | 9:00 a.m. - 12:00 mid |
| Pluto's Dog House | 12:00 noon - 6:00 p.m. |
| Signals | 10:00 a.m. - 12:00 mid |

LOUNGES

| | |
|------------------|-------------------------|
| Preludes | Open during show times |
| Promenade Lounge | 8:30 a.m. - 12:00 mid |
| Studio Sea | Open during events only |

BEAT STREET (18 and older after 9:00 p.m.)

| | |
|--------------------------------|--------------------------------|
| Diversions | 5:00 p.m. - 12:00 mid |
| Diversions 2 for 1 specials | 5:00-5:45 p.m., 7:30-8:15 p.m. |
| Rockin' Bar D | 7:00 p.m. - 2:00 a.m. |
| Sessions (Guests 18 and older) | 5:30 p.m. - 12:30 a.m. |

LATE NIGHT SNACKS

| | |
|-----------------------------|-------------------------|
| Ice Cream at Goofy's Galley | 6:00 p.m. - 9:30 p.m. |
| Pinocchio's Pizzeria | 9:30 p.m. - 12:00 mid |
| Pirate Buffet on Deck 9 | 10:30 p.m. - 11:15 p.m. |

ADDED FEATURES

| | |
|------------------|----------|
| Beverage Station | 24 hours |
| Room Service | 24 hours |

SHOPPING



Everyday there's something new at Mickey's Mates. Be sure to visit our shops often for daily onboard promotions. Deck 4, Forward.

Sophia Fiori
Dazzling Diamonds,
Tantalizing Tanzanite
& many other Jewels.



Great Gift Ideas

For every \$30 spent in stores, you can purchase a DCL character beach towel or a New York Bahamas photo album for just \$14.95.



Disposable cameras, sundries and sunscreen are available in Treasure Ketch, Deck 4, Forward.

Nike Apparel
Feature Brand of the day Nike Apparel for men cobranded with Disney Cruise Line, performance fabric perfect for your island excursions.

Diamonds Are Forever

View our fine collection of diamond jewelry, including pieces designed exclusively for Disney Cruise Line.

Shops will be closed in port due to local Customs regulations.

DCL3152/833578 909 ©DISNEY

IMPORTANT INFORMATION

Security Notice

All Guests (including Children) who wish to disembark or embark the ship are required to present their Key to the World card at the gangway. A photo ID is also required for those Guests who are 18 years of age or older. Guests under the age of 18 are required to have a Parent, Guardian or other responsible adult sign an authorization form at the time it is given out if they wish to go ashore unaccompanied. Authorization forms are available at the gangways and Guest Services.

Cold and Flu Remider

Please wash hands frequently and thoroughly, particularly before meals. Contact the Health Center by dialing 7-1923, should anyone in your party become ill.

Inclement Weather

For the safety of all Guests, outdoor events may be changed due to unforeseen weather conditions.

Sunscreen Advisory

Don't forget to apply sunscreen and insect repellent when going ashore.

Environmental Message

With Disney's commitment to the Environment please refrain from throwing anything over the Ship's side. Thank you.

No Reserved Seats Policy

As a courtesy to all Guests we kindly advise that the saving of seats is not permitted in the Walt Disney Theatre, and the saving of the sun loungers is not permitted on Deck 9 and 10. Items left unattended will be returned to lost and found at Guest Services Deck 3 Midship.

Smoking

For the comfort of our Guests the following open deck areas on the Starboard Side are designated as Smoking areas:
Deck 4 Starboard side from 6:00pm to 6:00am ONLY, Deck 9 Forward Starboard side at Quiet Cove and Deck 10 Starboard side. Smoking is prohibited in all Guest staterooms. Guests found smoking in their staterooms will be charged a \$250 stateroom recovery fee.

Corridor Quiet Hours

As a courtesy to all our Guests, please recognize quiet hallway hours from 10:00 p.m. til 8:00 a.m.

Walt Disney Theatre

Theatrical performances may use artificial fog, strobe lights, pyrotechnics and other special effects. For the safety of our performers and the comfort of those around you, the use of any photography or video recording device or any electronic equipment is prohibited.

Verandah Safety

Please do not leave any combustible materials on your balcony when not present in your stateroom for safety reasons.