

Disney WONDER

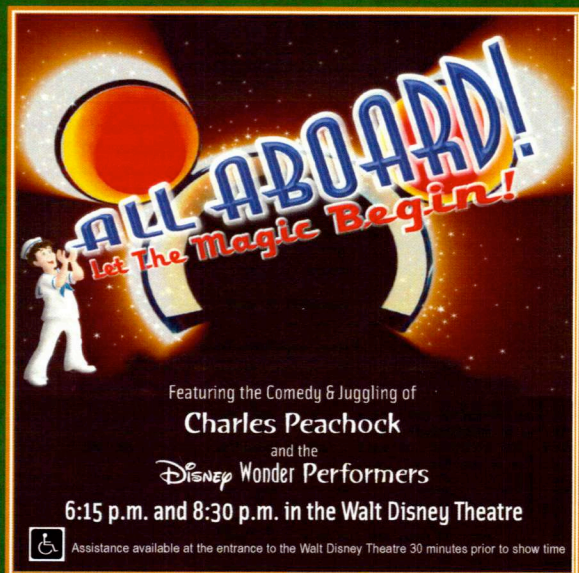
PERSONAL NAVIGATOR

SEATTLE: MONDAY, AUGUST 6, 2012

Sunrise: 5:47 a.m. Sunset: 8:44 p.m. Evening Attire: Cruise Casual

All Aboard: 3:45 p.m. Port Departure: 5:00 p.m.

PLEASE REMEMBER TO BRING YOUR KEY TO THE WORLD CARD
TO BOAT DRILL THIS AFTERNOON



WELCOME ABOARD!

UPON ARRIVAL...

YOUR STATEROOM & LUGGAGE

Staterooms will be ready at 2:00 p.m. Stateroom hosts will deliver luggage throughout the day until 5:30 p.m.

STATEROOMS WITH BUNK BEDS

Bunk beds are recessed into the ceiling and will be prepared during evening turndown service by your Stateroom Host/ess.

TO CHANGE DINING ASSIGNMENT

Requests for different seating times will be taken today:

- > 12:30 p.m. - 3:30 p.m. WaveBands
- > 3:30 p.m. - 5:00 p.m. Please dial 7-10891

PALO DINING RESERVATIONS:

Are required and will be taken on a first come basis today at:

- > 12:30 p.m. - 3:30 p.m. WaveBands
- > 3:30 p.m. - 5:00 p.m. Please leave a voicemail at 7-6843

DINNER

5:45 p.m. - First seating, 8:15 p.m. - Second seating
Please check your dining tickets for details of your dining rotation, and bring them to your specific dining location. There is no need to wait in line prior to dinner. Dining Rooms open at designated seating times & your table is reserved each night of your cruise.

DON'T MISS...

ADVENTURES AWAY

4:15 p.m. *Goofy's Pool Stage*

Earn your status as V.I.P. sailors as your Cruise Director Christiaan, Disney Pals, and the Cruise Staff officially begin your "Adventures Away."

MICKEY MANIA

7:30 p.m. & 9:30 p.m. *Studio Sea*

Join us for the ultimate test of your Disney knowledge as we play our live, interactive game show, that's "insania!"

FAMILY DANCE PARTY WITH SPEAKERBOX

7:30 p.m. *WaveBands*

Music fills WaveBands as our LIVE house band, Speakerbox, plays popular music for our family dance party.

WONDER QUEST

10:30 p.m. *WaveBands (Guests 18 years and older)*

Join your Club Host, Daniel, for the wildest and wackiest scavenger team event on the seven seas!



ADVENTURES AWAY

Earn your status as V.I.P. sailors as your Cruise Director Christiaan, Disney Pals, and the Cruise Staff officially begin your "Adventures Away."

4:30 p.m.
Goofy's Pool Stage

SMOKING IS PROHIBITED IN ALL GUEST STATEROOMS.

GUESTS FOUND SMOKING IN THEIR STATEROOMS WILL BE CHARGED A \$250 STATEROOM RECOVERY FEE.

ALL SHIP SERVICES WILL BE SUSPENDED BETWEEN 3:30 P.M. AND 4:30 P.M. DUE TO THE MANDATORY BOAT DRILL.

Get The Picture!

Take home all your stateroom photos from this cruise on a CD! Boarders are now included. Terms and conditions apply. Visit Shutters on Deck 4 and ask your friendly Shutters staff for more information.

Due to high volume of photos and limited time, we will only be accepting the first 100 orders. Hurry! Order yours now.



Celebrate your Disney Cruise
...one photo at a time.

Embarkation Special

Enter our embarkation raffle for a chance to win two 8 x 10 photos.

DINNER MENU

Animator's Palate: Show Dinner
Parrot Cay: Taste of Alaska
Triton's: French Dinner

DRINK OF THE DAY

Paradise Punch (Alcoholic)
Lava Smoothies (Non Alcoholic)

IMPORTANT NUMBERS

Fire / Security	7-3001
Medical EMERGENCY	7-3000
Health Center	7-1923

N

S





E

W

- Parrot Cay
- Pluto's Dog House
- Pinocchio's Pizzeria
- Port Adventures Desk
- Port Shopping Desk
- Preludes
- Promenade Lounge
- Quartermasters
- Quiet Cove Pool
- Shutters Photo Gallery
- Signals
- Studio Sea
- Tritons
- Treasure Ketch
- Radar Trap
- Vibe
- Vista Gallery
- Vista Spa and Fitness Center
- Walt Disney Theatre
- WaveBands
- Wide World of Sports Deck




Parrot Cay
 Pluto's Dog House
 Pinocchio's Pizzeria
 Port Adventures Desk
 Port Shopping Desk
 Preludes
 Promenade Lounge
 Quarter Masters
 Quiet Cove Pool
 Shutters Photo Gallery
 Signals
 Studio Sea
 Triton's
 Treasure Ketch
 Radar Trap
 Vibe
 Vista Gallery
 Vista Spa and Fitness
 Center
 Walt Disney Theatre
 WaveBands
 Wide World of Sports Deck


	12:00	12:15	12:30	12:45	1:00	1:15	1:30
SPECIAL							
CHARACTER	For detailed Character appearances, please dial 7-PALS or refer to the information board in the Lobby Atrium.						
MOVIES							
FUN FOR ALL AGES							
ADULTS	Welcome Aboard!						
ADULTS	Vista Spa Tours and Boot Camp Sign Up Vista Spa & Salon						
Teens							 Open House
Edge							 Open House
Oceaner Club							 Open House and Registration
Oceaner Lab							 Open House and Registration

	1:45	2:00	2:15	2:30	2:45	3:00	3:15	3:30	3:45	4:00	4:15	4:30	4:45	5:00	5:15	5:30	5:45	6:00	6:15	6:30	6:45
SPECIAL																					
CHARACTER	See some of your favorite Disney pals around the Lobby Atrium																				
MOVIES	For detailed Character appearances, please dial 7-PALS or refer to the information board in the Lobby Atrium.																				
FUN FOR ALL AGES	Open House and Registration Océanée Club and Océanée Lab																				
						Walking Ship Tour Meet Deck 10, Forward Elevators															
ADULTS																					
ADULTS	Vista Spa Shows and Reservations Vista Spa and Salon																				
Teens	OH	Open House																			
Edge	OH	Open House																			
Océanée Club	OH	Open House and Registration																			
Océanée Lab	OH	Open House and Registration																			

All ship services will be suspended during this time for the mandatory Boat Drill scheduled for 4:00 p.m. along Deck 4.

Refer to the posted drill instructions on the back of your stateroom door prior to heading to Deck 4. Please bring your Key to the World Card to boat drill.

	1:45	2:00	2:15	2:30	2:45	3:00	3:15	3:30	3:45	4:00	4:15	4:30	4:45	5:00	5:15	5:30	5:45	6:00	6:15	6:30	6:45			
													Mickey Mouse Lobby Portside			Movie: A Bug's Life (G) Funnel Vision 7:31 p.m.								
	Adventures Away Goofy's Pool Stage																All Aboard: Let the Magic Begin! Walt Disney Theatre							
													Disneyanature: Chimpanzee (G) Buena Vista Theatre 6:48 p.m.											
	Adventures Away Goofy's Pool Stage												Pre-Dinner Dance Promenade Lounge						<div>All Aboard: Let The Magic Begin! Walt Disney Theatre</div> 					
													\$500 Spa Raffle Vista Spa				Complimentary Footprint Analysis Vista Spa Gym - Sign-up required							
													OH Open House											
													OH Open House											
	Secured Programming begins at 6:00 p.m. in the Lab and Club												OH Open House and Registration				Parachute Games				Memory Wall			
													OH Junior Rangers Open House				Ice Breakers							
													OH Open House and Registration				Explore the Lab							

	7:00	7:15	7:30	7:45	8:00	8:15	8:30	8:45	9:00	9:15	9:30	9:45	10:00	10:15	10:30	10:45	11:00	11:15	11:30	11:45	12:00							
SPECIAL	Limited Edition Pin Station Preludes		Movie: The Lion King (G) 8:15 p.m. Funnel Vision						Pluto Lobby Atrium Portside		Movie: Game Plan (PG) Funnel Vision																	
CHARACTER	Goofy Lobby Portside		All Aboard: Let the Magic Begin! Walt Disney Theatre						Pluto Lobby Atrium Portside		For detailed Character appearances, please dial 7-PALS or refer to the information board in the Lobby Atrium.																	
MOVIES							Disney nature: Chimpanzee (G) Buena Vista Theatre																					
FUN FOR ALL AGES	Family Dance with Speakerbox WaveBands										Mickey Mania Studio Sea				Family Karaoke Studio Sea													
	Mickey Mania Studio Sea																											
	Jumari & Gabrielle LIVE Promenade Lounge										Jumari & Gabrielle's Chill Sounds Promenade Lounge								Late Night Music Promenade Lounge									
ADULTS													Retro Hits with Speakerbox WaveBands				DJ Wendell WaveBands											
ADULTS					Evening Standard with Alex James Cadillac Lounge								Alex James LIVE Cadillac Lounge >10:15pm				Club 18*21 Social Diversions				Wonder Quest WaveBands				Late Night with Alex Cadillac Lounge			
Teens	Teens only								Games				Break the Ice				The Download until 11:15 p.m. / Chillin' in Vibe 1:00 a.m.											
Edge	Ice Breakers						Edge Profiles and Meet your Counselors						The 411				Explore The Edge											
Oceaneer Club	Memory	Welcome Party		We have arts, crafts, games and computers happening all through out our opening times.																								
Oceaneer Lab			Welcome Party								Jr. Rangers																	
	We have arts, crafts, games and computers happening all through out our opening times.																											

YOUTH ACTIVITIES

HOURS OF OPERATION

Flounder's Reef Nursery	12:30 p.m. - 11:00 p.m.
Oceaneer Club <i>Open House</i>	12:30 p.m. - 6:00 p.m.
	<i>Secured Program</i>
Oceaneer Lab <i>Open House</i>	6:00 p.m. - 12:00 a.m.
	<i>Secured Program</i>
	12:30 p.m. - 6:00 p.m.
Edge Vibe	6:00 p.m. - 12:00 a.m.
	12:30 p.m. - 12:00 a.m.

PHONE

7-18500
7-1440
7-1440
7-1445
7-1445
7-5810
7-1456



REGISTRATION FOR 3-12 YEAR OLDS

Meet the Youth Activities Team in the Oceaneer Lab and Oceaneer Club, complete your registration & learn all about the Themed Experiences this cruise!



YOUTH ACTIVITIES OPEN HOUSE

A non secured program with activities for families, adults and children of all ages to enjoy together.



CLUBHOUSE SERIES - The Clubhouse Themed Experiences focus on movement and feature content which appeals to younger children. *Recommended 7 years and younger.*



STORYBOOK SERIES - The Storybook Series Themed Experiences are designed with a strong connection to the Disney classic stories.



JUMP UP! SERIES - The Let's Move! Themed Experiences will include large ground games & movement-oriented activities.



CREATE & INVENT SERIES - The Create & Invent Themed Experiences will have a tactile focus allowing children to create and admire their work.



IN THE SPOTLIGHT SERIES - The In The Spotlight Themed Experiences focus on children's stage presence with lots of activities and enthusiasm. *Recommended 7 years and older.*



SOLVE IT! SERIES - The Solve It! Themed Experiences are less active, but will challenge children with problem/solutions-based activities. *Recommended 7 years and older.*



OUT AND ABOUT SERIES - Set outside the designated Youth Activity spaces, The Kids Out and About Themed Experiences provides the opportunity for families to play together. *Recommended 8 years and older.*

YOUTH ACTIVITIES OPEN HOUSE

Open House is an opportunity for all to come and participate in a variety of exciting activities and free time in the Oceaneer Club and Lab throughout the cruise. During these times secured programming will still be offered in the other venue for those looking to check their children into care.

DINE & PLAY

A nightly convenience for families dining at 8:15 p.m., our Youth Activities Counselors will be available at 9:15 p.m. at the entrance of Triton's, Parrot Cay and Animator's Palate dining rooms to bring registered children to join the fun in the Oceaneer Club and Oceaneer Lab.

EDGE (11- 14 YEAR OLDS)

Deck 2, Midship (7-5810)

Edge is an interactive play space designed to meet the needs of all our Tweens on board. It's design is comfortable and cool, where kids ages 11-14 years can come to play computer games and consoles, meet new friends and participate in fun events and activities, or just hang out

10:00 PM. EDGE 411

Come and meet your counselors and fellow Tweens as we get to know each other and what there is for you to do all week long in Edge.

VIBE (14-17 YEAR OLDS)

Deck 11, Midship (7-1456)

10:30 PM. THE DOWNLOAD

Come up to Vibe and help plan all the fun activities you will be doing this cruise with your new friends!



FUN FOR ALL AGES

DISNEY FRIENDS TEA PARTY

Be sure to stop by Guest Services to reserve your special pass for an opportunity to have tea with your Disney friends. (Limited number available)

WALKING SHIP TOUR

2:30 p.m. Meet at the Deck 10 Forward Elevators

Enjoy the beauty of the Disney Wonder® with your Cruise Staff on this guided tour. (This tour will be repeated tomorrow morning)

LIVE MUSIC WITH JUMARI & GABRIELLE

5:15 p.m., 7:30 p.m., 9:30 p.m. & 10:30 p.m. Promenade Lounge

Our duo, Jumari and Gabrielle, play LIVE for your listening and dancing pleasure.

LIMITED EDITION PIN STATION

7:15 p.m. Preludes

Unique and one-of-a-kind trading pins available for purchase at our special pin station.

MICKEY MANIA

7:30 p.m. & 9:30 p.m. Studio Sea

Join us for the ultimate test of your Disney knowledge as we play our live, interactive game show, that's "insania!"

FAMILY KARAOKE

10:00 p.m. Studio Sea

Be a singing superstar when you and your family take the stage and sing along to your favorite tunes.

CHARACTER APPEARANCES

ADVENTURES AWAY

4:30 p.m. Deck 9, Midship.

Join Mickey and his friends at the Goofy Pool Stage for this fun and exciting show.

For daily Character appearances please check your Personal Navigator or dial 7-PALS.

(Guests are advised to arrive by the start time of our character appearances to avoid disappointment.)



ADULT EXCLUSIVE ENTERTAINMENT

PIANO AND VOCAL FAVORITES

7:30 p.m., 9:30 p.m., 10:30 p.m. & 11:30 p.m. Cadillac Lounge

Join Alex James in Cadillac Lounge as he plays your favorite piano hits, including a special set entitled "American Songbook" at 10:30 p.m. showcasing some of the great music Alex has to offer throughout the cruise.

SPEAKERBOX LIVE

9:45 p.m. WaveBands

Join our LIVE house band, Speakerbox, as they light up the dancefloor with retro hits from the 60's, 70's and 80's!

CLUB 18*21 SOCIAL

10:00 p.m. Diversions

Meet other 18-21-year-olds and share some laughs.

WONDER QUEST

10:30 p.m. WaveBands

Join your Club Host, Daniel, for the wildest and wackiest scavenger team event on the seven seas!

DJ WENDELL

11:00 p.m. WaveBands

Our in house DJ plays the sounds to keep you dancing through the night.

MORE TO ENJOY WHILE ONBOARD

SURF @ SEA

\$0.75 per minute or save money by buying blocks of time. \$55 for 100 minutes, \$100 for 250 minutes and \$150 for 500 minutes. Wireless information sheets are available at Guest Services, Deck 3, Midship. Due to the technology involved and satellite connectivity, the onboard internet service will be noticeably slower than you may be accustomed to and may at times be interrupted or unavailable.

STAY CONNECTED WITH CELLULAR SERVICE

Cell phone and wireless PDA service is available in Guest staterooms through most plans. Pricing varies depending upon your wireless provider and usually includes International roaming rates.

VISTA GALLERY

Visit our Vista Gallery on Deck 4, Midship from 6.00 p.m. - 9.00 p.m. to view a large selection of Disney art, including giclees on canvas and paper and even some original art pieces.

PREPARE TO SHOP!

Alaska is one of the world's top shopping destinations! Meet your personal Shopping Guide, Whitney, at her desk, Deck 3, Midship, 7:30 p.m. to 8:30 p.m. and just for stopping by you will receive an extra raffle ticket for tomorrow's jewelry raffle!

OPERATING HOURS

Disney's Vacation Club	5:00 P.M. - 10:00 P.M.	Port Adventures Desk	12:00 P.M. - 3:30 P.M.
Future Sales Desk	7:00 P.M. - 8:00 P.M.		4:30 P.M. - 5:30 P.M.
Goofy's Pool	12:00 P.M. - 3:30 P.M.		7:00 P.M. - 8:30 P.M.
	6:00 P.M. - 12:00 MID	Port & Shopping Desk	7:30 P.M. - 8:30 P.M.
Guest Services	24 HOURS	Preludes (snacks)	5:45 P.M. - 6:30 P.M.
Hair Braiding	8:00 A.M. - 10:00 P.M.		8:00 P.M. - 8:45 P.M.
Health Center	4:30 P.M. - 7:00 P.M.	Quarter Masters	24 HOURS
Mickey's Mates	6:00 A.M. - 11:00 P.M.	Quiet Cove Pool	12:00 P.M. - 3:30 P.M.
Mickey's Pool	12:00 P.M. - 3:30 P.M.		4:30 P.M. - 12:00 MID
	4:30 P.M. - 10:00 P.M.	Shutters	5:00 P.M. - 11:00 P.M.
Mickey's Slide	12:30 P.M. - 3:30 P.M.	Treasure Ketch	6:00 P.M. - 11:00 P.M.
	4:30 P.M. - 5:30 P.M.	Radar Trap	6:00 P.M. - 11:00 P.M.
Mickey's Splash Zone	12:00 P.M. - 3:30 P.M.	Vista Spa Fitness Center	12:00 P.M. - 10:00 P.M.
	4:30 P.M. - 8:00 P.M.	Vista Spa and Salon	12:00 P.M. - 10:00 P.M.
		Vista Gallery	6:00 P.M. - 9:00 P.M.

Dining Hours

Consumers who order raw or partially cooked, ready-to-eat food of animal origin, are hereby informed that the food is not sufficiently cooked to ensure its safety.

LUNCH

Beach Blanket Buffet	12:00 P.M. - 3:15 P.M.
Parrot Cay Buffet	UPON BOARDING - 2:30 P.M.
Goofy's Galley	UPON BOARDING - 3:30 P.M.
Pinocchio's Pizzeria	UPON BOARDING - 3:30 P.M.
Pluto's Dog House	UPON BOARDING - 3:30 P.M.

DINNER

Animator's Palate*	5:45 P.M. & 8:15 P.M.
Tritons*	5:45 P.M. & 8:15 P.M.
Parrot Cay*	5:45 P.M. & 8:15 P.M.
Goofy's Galley	4:30 P.M. - 7:00 P.M.
Pinocchio's Pizzeria	4:30 P.M. - 9:30 P.M.
Pluto's Dog House	4:30 P.M. - 7:00 P.M.

* Pre-arranged seating assignments

LATE NIGHT SNACKS

Diversions (Adults)	11:00 P.M. - 12:00 MID
Promenade Lounge (Family)	11:00 P.M. - 12:00 MID
Goofy's Galley (Ice Cream)	7:00 P.M. - 11:00 P.M.
Pinocchio's Pizzeria	9:30 P.M. - 12:00 MID

ADDED FEATURES

Beverage Station	24 HOURS
Room Service	24 HOURS

Bar Hours

Bars are solely for adults 18 and older, except during scheduled family events. Adults must be 21 and older to consume alcoholic beverages.

ON DECK

Cove Café	11:30 A.M. - 12:00 MID
Outlook Café & Wine Bar	11:30 A.M. - 12:00 MID
Pinocchio's Bar	11:30 A.M. - 12:00 MID
Pluto's Dog House Bar	11:30 A.M. - 7:00 P.M.
Signals Bar	11:30 A.M. - 7:00 P.M.

LOUNGES

Preludes	OPEN DURING SHOWTIMES
Promenade Lounge	11:30 A.M. - 12:00 MID
Studio Sea	11:30 A.M. - 3:30 P.M.

Route 66

18 and older after 9:00 p.m.

Cadillac Lounge (Guests 8 & Older)	6:00 P.M. - 12:00 MID
Diversions Bar	11:30 A.M. - 12:00 MID
WaveBands Bar	OPEN DURING SCHEDULED EVENTS
	OPEN TILL 1:30 A.M.

ONBOARD AIRLINE CHECK IN

Stop by Guest Services before 11:00 p.m. on Friday to see if you are eligible for Onboard Airline Check In.



GET THE PICTURE!

Receive all your cruise photos in digital format and with all boarders included on CD for \$349.95! Conditions apply. Visit Shutters Photo Gallery, Deck 4, Aft for more details.



PLAN YOUR NEXT CRUISE

Book a future cruise today and you'll save 10%, receive up to a \$200 onboard credit, and pay a reduced deposit! Visit the Future Cruise Sales desk located Deck 4, Midship, or call 7-2848.



FIND YOUR VACATION PARADISE

Learn more about the benefits of membership of one of Disney's best-kept secrets at the Disney Vacation Club Desk on Deck 4, Midship.



FORGOT TO BOOK ONLINE?

Book and receive any of our Signature treatments today ONLY and enjoy complimentary bonus treatments. Visit the Vista Spa, Deck 9, Forward, or call 7-1465.



Welcome aboard and get ready to head north for the sights and scenery that all our stops in Alaska have to offer! From whales to glaciers to dog sledding, the opportunities are endless. Our knowledgeable team is standing by to help plan your Alaskan Adventures. Come see us on Deck 3, Midship, at our Port Adventures Desk.

SHOPPING

Mickey's Mates



Sophia Fiori Trunkshow

Sophia Fiori has brought onboard over a million dollar worth of Exclusive Blue Diamonds. Come and meet Sophia Fiori representative, for a VIP card at Treasure Ketch Deck 4 Midship.

Alaska Collectables

Be a part of DCL history with an exclusive collection of Disney Wonder Alaska Merchandise. Choose from a variety of merchandise including men's and ladies fashion tees, hoodies, scrapbooks and kits, post-cards and photo albums.

Disney Cruise Line Dooney & Bourke

Visit Treasure Ketch and see this exclusive Disney Cruise Line Dooney & Bourke collection, only Available onboard Disney Cruise Line.

Limited Edition Pin Station

Unique and Limited Edition Pins available for purchase at our special pin station, join us from 7:15 p.m. to 8:15 p.m., Preludes, Deck 4.

IMPORTANT INFORMATION

Security Notice

All Guests (including Children) who wish to disembark or embark the ship are required to present their Key to the World card at the gangway. A photo ID is also required for those Guests who are 18 years of age or older. Guests under the age of 18 are required to have a Parent, Guardian or other responsible adult sign an authorization form at the time it is given out if they wish to go ashore unaccompanied. Authorization forms are available at the gangways and Guest Services.

Cold and Flu Reminder

Please wash hands frequently and thoroughly, particularly before meals. Contact the Health Center by dialing 7-1923, should anyone in your party become ill.

Corridor Quiet Hours

As a courtesy to all our Guests, please recognize quiet hallway hours from 10:00 p.m. till 8:00 a.m.

Inclement Weather

For the safety of all Guests, outdoor events may be changed due to unforeseen weather conditions.

Environmental Message

With Disney's commitment to the Environment please refrain from throwing anything over the Ship's side. Thank you.

No Reserved Seats Policy

As a courtesy to all our Guests we kindly advise that the saving of seats is not permitted in the Walt Disney Theatre, and the saving of the sun loungers is not permitted on Deck 9 and 10. Items left unattended will be returned to lost and found at Guest Services Deck 3 Midship.

Smoking

For the comfort of our guests the following areas are designated as Smoking areas: Open decks on the Starboard Side (excluding Mickey Pool area). Smoking is not permitted on Deck 4, Starboard from 6:00am to 6:00pm. Smoking is prohibited in all guest staterooms. Guests found smoking in their staterooms will be charged a \$250 stateroom recovery fee.

Internet

Due to the technology involved and satellite connectivity the onboard internet service will be noticeably slower than you may be accustomed to and may at times be interrupted or unavailable.

Walt Disney Theatre

Theatrical performances may use artificial fog, strobe lights, pyrotechnics and other special effects. For the safety of our performers and the comfort of those around you, the use of flash photography and video recording is prohibited.

Verandah Safety

Please do not leave any combustible materials on your balcony when not present in your stateroom for safety reasons.