

Shannon, Your Port Shopping Guide, has your VIP Cards.

Port Shopping Information

# CARTAGENA



Contact

WAVE TO WAVE: 36311  
STATEROOM: ADD 41+36311



Location

400 MILES NORTH OF BOGOTÁ



Population

616,231



Taxi

TAXIS ARE AVAILABLE.



Currency

THE COLOMBIAN PESO,  
USD ARE WIDELY ACCEPTED.

## SHOP. EAT. EXPLORE. ASHORE

The main shopping area is located in The Old Walled City, which is a 15 minutes taxi ride.  
Taxis are readily available at the cruise terminal.

## DOCKING

The ship will dock at the Cartagena Cruise Ship Terminal.

### MEET YOUR PORT SHOPPING GUIDE SPECIALIZING IN EVERYTHING SHOPPING ASHORE!

Expand your "to do" list to include shopping & relive your vacation later!  
This week you can do it all, see it all & commemorate it all with their expert advice!  
Take advantage of their experience, knowledge & training.  
Ask about transportation to the recommended stores.

### COLLECT YOUR VIP SHOPPING ASHORE CARDS VISIT THE PORT SHOPPING DESK

Join your Port Shopping Guide today for the fun of in-store raffles plus gifts with purchase. These complimentary cards are essential when shopping in port and will ensure you get the Disney VIP Service you deserve.

## PORT OVERVIEW

Cartagena was founded in 1533 and when the Spanish conquistadors discovered the interior of Colombia was rich in gold and emeralds, wealth of all kinds flowed to Spain. This fortune soon invited pirate attacks. In defense, the King ordered a 50' thick wall be built and the streets intentionally made narrow and crooked, designed for protection during assault. Cartagena was victim to 5 sieges during the 16th Century, the

most famous being led by Sir Francis Drake. Today Cartagena's wealth is still centered around emeralds but let's not forget coffee. The famed Juan Valdez is internationally recognized as a representation of Colombian coffee! Cartagena may have been a defensive city in the past, but it now warmly and generously welcomes all its visitors and guarantees them a wonderful time.



**DI DIAMONDS<sup>®</sup>**  
INTERNATIONAL



Luxury Stores



Local Stores



Photo Ops



Apparel & Home

**1**  
a-d

## CARIBE JEWELRY

### *Emerald Store, Museum & Jewelry Factory*

- Inside the walls of the Old City, see our extensive array of Colombian emeralds
- Four locations offer a huge selection of loose emeralds & fine jewelry
- Our jewelry is manufactured in our own factory
- See our unique collection of Colombian emeralds
- Meet "Petra", the largest Colombian emerald matrix
- This is the place to learn about emeralds, see the cutters & craftsmen at work
- Here you will find exciting stones with different shades of green
- Family owned & operated; ask for Alfredo, Ricardo or Eduardo, the brothers who started it all in 1983
- TripAdvisor Certificate of Excellence
- Friendly knowledgeable staff ready to assist you in making the perfect choice

**2**

## MISTER EMERALD

### *The Respected Place for Emeralds in Cartagena*

- In the very heart of the Walled City
- A half block from the refreshment stop on your tour
- Lee Miles, proprietor; trusted American emerald expert
- Certified Colombian emeralds in 18kt gold & sterling
- Custom in-house designs in handmade settings
- Emeralds directly sourced from the mines of Colombia
- US customer service, US phone lines, one-year guarantee
- Boutique atmosphere; reliable information, no pressure
- Very firm prices; value you can trust, no bargaining
- VIP card from your Port Shopping Guide for a special discount

**3**

## ADRIANA'S JEWELRY

### *Finest Emeralds*

- Located in the Old City San Pedro Claver street
- Unpolished "rough" emerald jewelry, beautiful & affordable
- A wide array of 18kt gold & sterling silver, unique designs
- Exquisite rings, pendants, earrings, bracelets & loose stones
- Custom designers on site to create anything you desire
- Ask for a raffle ticket - win 18kt gold emerald pendant
- All jewelry comes with a Certificate of Authenticity
- One-year guarantee & US Service Center
- Special discounts; free beer, coffee & cold drinks

**4ab**

## EMERALD CENTER

### *43 Years of Tradition, Family Owned Business*

- Since 1976, Emerald Center has a history of unbeatable care for quality
- Exquisite jewelry featuring certified, natural Colombian emeralds
- This prestigious jeweler designs unique & customized jewelry in 18kt gold & silver
- Fine jewelry collections for every occasion & every budget
- Enjoy a warm & welcoming shopping experience
- Certificate of authenticity with every purchase
- Visit us & receive a complimentary pre-Colombian pendant



Crown of Light



Hublot



Kabana



Bremont



Korite Ammolite



TAG Heuer



Safi Kilima



Breitling

# Fun Facts

## About Cartagena

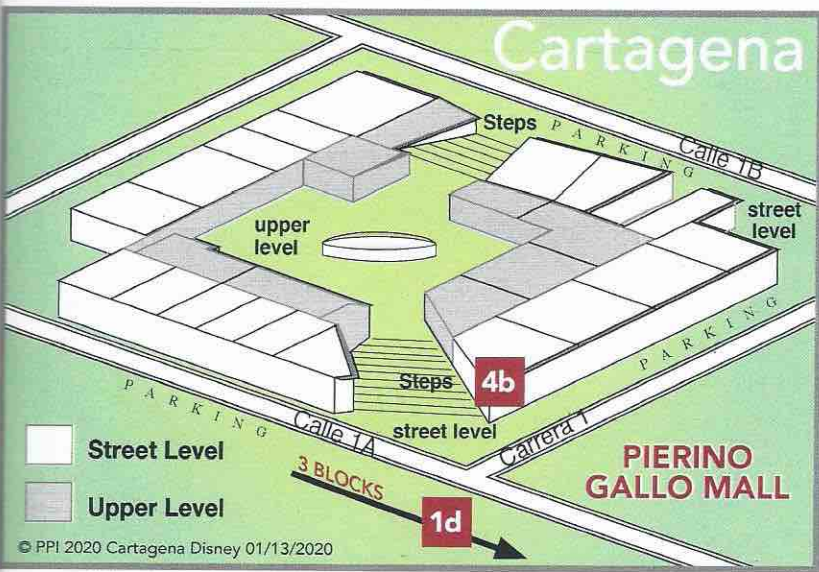
At the end of the **16th CENTURY**, Cartagena built a **7 MILE ARCHITECTURAL WONDER**: a wall to protect it from **PIRATES** and **INVADERS**.

The wall is part of a **UNESCO WORLD HERITAGE SITE**.

The **CARTAGENA FILM FESTIVAL** Film, or **FICCI**, is Latin America's **LONGEST RUNNING FILM FESTIVAL**.

In 2015, divers discovered a **SHIPWRECK** of the Spanish ship which sank over **300 YEARS AGO**. They **DISCOVERED** over **17 BILLION U.S.D.** in treasure and gold.

There is a **MUD VOLCANO** located 30 miles outside of the city.



### 5 JOYERIA COSCUEZ

*Beautiful Emerald Jewelry Created for You*

- Felipe grew up mining in Muzo, founding the company with his wife in 1997
- Our location showcases the expert craftsmanship of our jewelers
- Choose from rough or polished loose emeralds, great selection
- The emeralds are set in 18kt white/yellow gold or sterling silver
- Every piece comes with a certificate of authenticity
- Duty free jewelry & U.S. customer service

### 6 COFFEE AND...

*Finest Selection of Premium Roast Coffee in Cartagena*

- Assortment of roasts, flavored ground, whole bean & instant coffee
- Colombian chocolates, coffee candies, vanilla, soft drinks & hot sauces
- Handicrafts, T-shirts, hand painted pottery & souvenirs
- Reproduction of pre-Colombian pieces & affordable jewelry
- Pick up a gift box of premium coffee - it makes a great gift



multicolors Collection by EFFY



Mark Henry

### Treat Yourself To A Little Retail Therapy!

#### Emeralds Essentials

- Stud Earrings
- Pendant
- Bracelet
- Ring
- Brooch

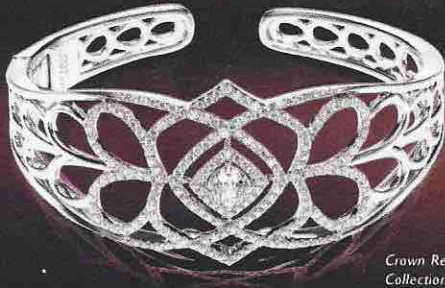
#### Watches

- For him
- For her

#### Port Essentials

- Coffee
- Local Crafts

CROWN OF LIGHT®



Crown Regal Collection

That's Beautiful

Exclusively at  
**DI DIAMONDS®**  
INTERNATIONAL

United States • Caribbean • Central America • Mexico

SAFI KILIMA  
TANZANITE

#1 SELLING TANZANITE BRAND  
IN THE WORLD.



**\$99** USD

Exclusively sold at  
Diamonds International & Tanzanite International  
SafiKilima.com

ESPY



WATERCOLORS COLLECTION

**IN CASE OF EMERGENCY** ⚠️

**Port Agent:** Rozo & Cia **Address:** Transversal 48 No. 21-85, Calle Nilo, El Bosque, Cartagena, Columbia **Agent:** Ricardo Carrasquilla Diaz  
**Phone:** 5756623221 **Cell:** 5753156864480 **Email:** operations@jaimerozogomezycia.com

**Safety Ashore Information**

While you will find many great experiences ashore, please remain vigilant about your personal safety and the safety of your belongings. As in any tourist destination, you'll want to take some basic precautions to make the most of your time ashore.

- Be aware of your surroundings at all times. Obey local traffic and pedestrian laws and signage. Please use crosswalks and mind the traffic signals or crossing guards if present. Avoid short cuts, narrow alleys and poorly lit streets.
- Avoid wandering from the main shopping and tourist areas into unfamiliar territory. If venturing out independently, have a plan, use only licensed taxi operators.
- Identity/Credit Card theft can occur anywhere. Please remain vigilant in monitoring the safe keeping of your personal information.
- Leave valuables in your room safe and avoid carrying large amounts of cash. Exercise caution when using ATMs. Cameras and handbags should be carried close to your body or concealed out of sight.
- Leave air transportation tickets and other travel documents in your room safe. When going ashore, each adult is required to carry a Driver's license, passport or other government-issued photo ID. - Note: Some ports may require Guests to carry passports ashore.
- Most crimes are easier to commit in dark unlit areas. When going ashore at night, please be extra vigilant about your personal safety.
- All Guests (including children) who wish to disembark the ship are required to present their Key To The World card at the gangway. A photo ID is also required for those Guests who are 18 years of age or older. Guest under the age of 18 are required to have a parent, guardian or other responsible adult sign an authorization form at the Guest Services desk if they wish to go ashore unaccompanied or with any adult from another stateroom.



Enjoy Cariloha's Softest Bedding on the Planet®.  
Made of Viscose from Bamboo.



CARIBBEAN • MEXICO • ALASKA • HAWAII • CONTINENTAL U.S. ...AND GROWING!

**DEL SOL**  
COLOR CHANGE

COLOR-CHANGING  
SUNGLASSES

**LIFETIME GUARANTEE**  
AGAINST THEFT, LOSS & DAMAGE

**Port Shopping Buyer's Guarantee**

Shop with confidence at each of the recommended stores. All stores listed on the map offer Disney Cruise Line's guests a Buyer's Guarantee valid for 60 days after purchase. This guarantee is valid for repair or exchange. The following conditions apply to the guarantee: Buyer's negligence and buyer's remorse are excluded. Only appraisals from independent, accredited graduate gemologists not affiliated with any retail jeweler will be considered in order to determine quality and value of jewelry related to any claims. In the case of branded diamonds and gemstones, a gemologist with knowledge of the brand must conduct the appraisal. Price paid for merchandise or verbal claims or agreements between merchant and Guest will not be grounds for returns. Electronics and watches requiring service must be returned to the respective manufacturer directly by the guest. All purchases, including fragile items, must be checked before leaving the store. Do not mail merchandise without prior authorization. Guests are responsible for postage and appraisal costs.



The Port Shopping Program is operated by PPI Group and the stores listed on this map have paid a promotional fee. For assistance e-mail Service@ppigroup.com within 60 days of purchase, or contact our Customer Service at PPI Group, 6261 NW 6th Way, Suite 100, Fort Lauderdale, FL 33309. TEL: 1.888.774.4768 or 954.377.7777