

# VOYAGE NAVIGATOR

SATURDAY  
FEBRUARY 22, 2020

TO

FRIDAY  
FEBRUARY 28, 2020

## CRUISE HIGHLIGHTS

### SATURDAY

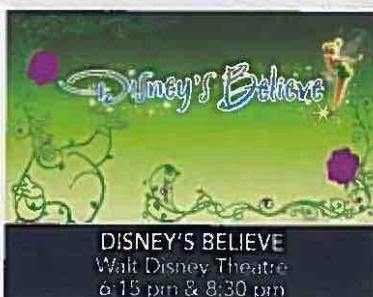
PORT CANAVERAL, FLORIDA  
Port Departure: 5:00 pm  
All Aboard: 3:45 pm  
Attire: Cruise Casual



**A FANTASY COME TRUE: WELCOME SHOW**  
Walt Disney Theatre  
6:15 pm & 8:30 pm

### SUNDAY

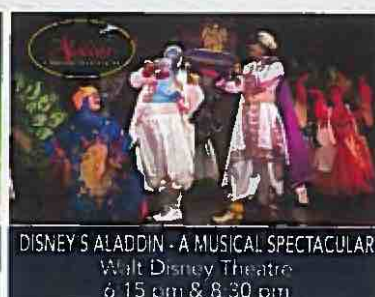
DAY AT SEA  
Attire: Formal



**DISNEY'S BELIEVE**  
Walt Disney Theatre  
6:15 pm & 8:30 pm

### MONDAY

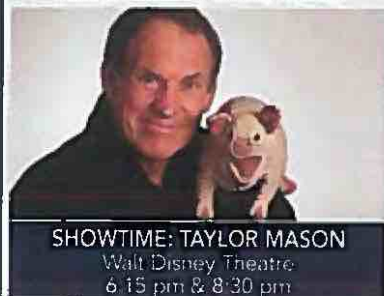
DAY AT SEA  
Attire: Cruise Casual



**DISNEY'S ALADDIN - A MUSICAL SPECTACULAR**  
Walt Disney Theatre  
6:15 pm & 8:30 pm

### TUESDAY

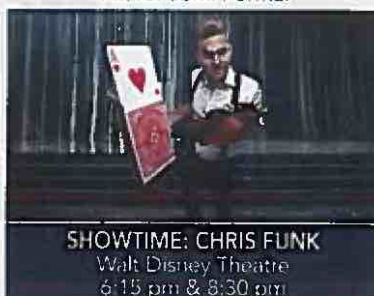
ROAD TOWN (TORTOLA), B.V.I.  
All Ashore: 7:30 am  
All Aboard: 5:45 pm  
Attire: Pirate or Cruise Casual



**SHOWTIME: TAYLOR MASON**  
Walt Disney Theatre  
6:15 pm & 8:30 pm

### WEDNESDAY

ST. THOMAS, U.S. VIRGIN ISLANDS  
All Ashore: 7:45 am  
All Aboard: 4:00 pm  
Attire: Semi Formal



**SHOWTIME: CHRIS FUNK**  
Walt Disney Theatre  
6:15 pm & 8:30 pm

### THURSDAY

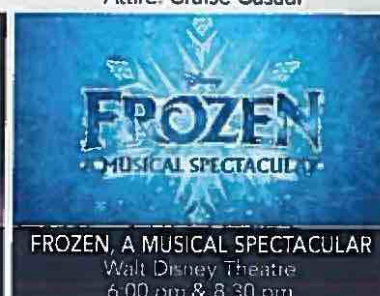
DAY AT SEA  
Attire: Star Wars/ Cruise Casual



**STAR WARS: THE RISE OF SKYWALKER**  
Walt Disney Theatre  
4:45 pm & 7:45 pm

### FRIDAY

DISNEY CASTAWAY CAY  
All Ashore: 9:30 am  
All Aboard: 4:45 pm  
Attire: Cruise Casual



**FROZEN, A MUSICAL SPECTACULAR**  
Walt Disney Theatre  
6:00 pm & 8:30 pm

Subject to change.

## WELCOME ABOARD!

### YOUR STATEROOM & LUGGAGE

Staterooms will be ready at 1:30 pm. To allow your Stateroom Host/ess time to prepare your room, please do not remove the blue stanchion straps. Stateroom hosts will deliver luggage throughout the day until 5:30 pm.

### STATEROOMS WITH BUNK BEDS

Bunk beds are recessed into the ceiling and will be prepared during evening turndown service by your Stateroom Host/ess.

### STATEROOM SAFE

Each stateroom is equipped with a secured storage safe. Instructions for use are located on the safe.

### TO CHANGE DINING ASSIGNMENT

Requests for different seating times will be taken today:

12:30 pm - 3:00 pm; Book in Enchanted Garden, Deck 2, Midship

3:00 pm - 5:00 pm; please dial 7-1831, 7-1832, or 7-1833

### REMY & PALO DINING RESERVATIONS

Reservations are required and will be taken on a first come basis today:

12:30 pm - 3:00 pm Enchanted Garden, Palo & Remy.

3:00 pm - 5:00 pm Please leave a voice mail at 7-9735 for Palo or 7-9734 for Remy.

Please dial 7-9734 for Remy or 7-9735 for Palo for more information. Cover charge applicable.

Adult Exclusive Dining Opportunity! Guests are invited to make 2 dinner reservations at our two adult-exclusive restaurants, Palo & Remy. This includes one reservation on embarkation evening and one more on another night of the cruise. Reservations are subject to availability and a specialty dining charge will apply.

### DINNER

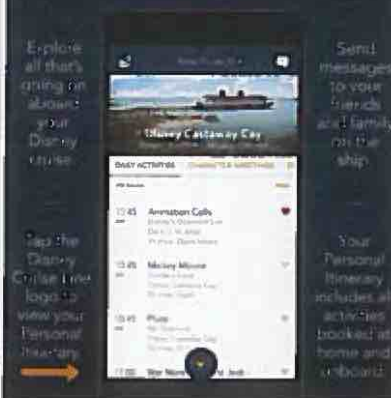
5:45 pm - Main seating 8:15 pm - Second seating

Please check your Key To The World Card or dining tickets for details of your dining rotation, and bring them to your specific dining location. There is no need to wait in line prior to dinner. Dining Rooms open at designated seating times and your table is reserved each night of your cruise.

A = Animator's Palate, Deck 3, Aft E = Enchanted Garden, Deck 2, Midship R = Royal Court, Deck 3, Midship

## DISNEY CRUISE LINE NAVIGATOR APP

BEFORE YOU SAIL AWAY



Create the most memorable experiences during your Disney Cruise Line vacation with Port Adventures! Our Port Adventures are designed for you to see the best our ports have to offer. Stop by the Port Adventures Desk, Deck 5, Midship where our friendly team will be happy to assist you plan your adventure!

There is an adventure for everyone on your Disney Fantasy® vacation.

Disney Cruise Line  
**PORT ADVENTURES**

IMPORTANT NUMBERS

Fire/Security: 7-3001

Medical Emergency: 7-3000

Health Center: 7-1927



## ADULT ACTIVITY HIGHLIGHTS



### 1820 SOCIETY (GUESTS 18-20 YEARS ONLY)

1820 Society is an exclusive option for young adult guests. Come meet fellow guests and learn about the excellent activities that the Fantasy offers to create the perfect cruise experience.



### 80'S MUSIC CHALLENGE

"Moon Walk" back to the 80's as we put your musical knowledge of the decade to the test.

### ART OF THE THEME SHOW SHIP TOUR

Join us for a guided tour highlighting the design, Imagineering and artistry of the ship. This tour is reserved for Guests 18 and over.

### CRUISIN' SOLO GATHERING

Single, single parent or just traveling alone? Join your Cruise Staff for an informal gathering.



### DISNEY AT SEA WITH D23!

Join us for an exciting look at what's new and what's next from all of Disney's wonderful worlds! From theme parks and movies, to vision, music and beyond, you won't want to miss a minute of this new show presented by D23, Disney's official fan club.



### MATCH YOUR MATE

It's time to play everyone's favorite couples game show, Match Your Mate!



Senses Spa & Salon has a variety of seminars and fitness classes available throughout the cruise. Pamper yourself with therapeutic spa treatments of heat, steam, rain and water in luxurious and tranquil private rooms. Deck 11, Forward.

### BEVERAGE SEMINARS

Your Beverage team has a host of tastings and seminars to entertain and educate you. Stop by La Piazza, Deck 4, Aft to pre-book these experiences (nominal fee applies).

Mixology - Stem to Stern Wine Tasting - Martini Tasting - Champagne Tasting - Beer Tasting - Cognac Tasting - Whisky Tasting - Amari Tasting - Tequila & Margarita Tasting - Chocolate & Liquor Tasting - Rum Tasting

## FEATURED VARIETY ACT THIS VOYAGE



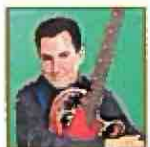
### THE HIGH ENERGY COMEDY OF HEATH HYCHE

Heath uses stand-up comedy, quick-change costumes, original music, sound effects, and cleverly constructed props and scenery to take the audience on a journey through his vivid imagination and meet a cavalcade of manic characters. Heath Hyche's TV credits include "The Tonight Show with Jay Leno", "Last Comic Standing", and two seasons on "Blue Collar TV" alongside Jeff Foxworthy, Larry the Cable Guy, and Bill Engvall. On the big screen, Heath appeared in the films "Man on the Moon" with Jim Carrey and Will Ferrell's "Talladega Nights".



### THE VENTRILOQUISM & COMEDY OF TAYLOR MASON

Combining music, ventriloquism, comedy and audience participation sounds like a musical theater production, but it's really one man! Taylor Mason makes people of all ages laugh and laugh hard. His quick wit, flawless delivery and polished material make him a hit with Guests of all ages.



### THE COMEDY & MUSIC OF JOHN CHARLES

John Charles has been performing all around the United States, Canada and Europe for most of his professional life and has established himself as one of the most sought after entertainers. With just his guitar and his incredible singing voice, John will amaze you with his ability to combine music, comedy and audience interaction.



### THE MAGIC AND MUSIC OF CHRIS FUNK

Chris Funk has performed across the globe. He's been seen on Penn & Teller Fool Us, Masters of Illusion and recently a little show called America's Got Talent. Chris blends his love of magic and his love of music into a show that's been described as hilarious, refreshing, and powerful. — this is your cure for the "common" magic show.

## FUN FOR ALL AGES HIGHLIGHTS



### ANYONE CAN COOK

Every Chef has a specialty, and ours is no exception. Get a taste of perfection with each day's recipe.



### A PIRATES LIFE FOR ME

Calling all Pirates, we be! If ye have an adventurous spirit or pirate savvy, come spin the "Wheel of Destiny" fer a treasure trove of fun be ripe for the takin' in this action packed pirate game show.



### BUCCANEER BLAST FIREWORKS

What's a pirate party without some fireworks to remind the other ships who be ruling the oceans blue?



### CASTAWAY CAY 5K (10+)

Sign up today for the Castaway Cay 5K! Please visit the information desk in the terminal to sign up before you board, and if you're registered already, to sign your waiver. You may also visit the Port Adventures Desk or the Guest Services Desk to register at any time prior to our arrival at Disney Castaway Cay. Please note that runners must be 10 years of age or older to participate.



### DISNEY VACATION CLUB GROUP PREVIEW

Want to learn more about taking magical vacations year after year? Please see a Disney Vacation Club Cast Member on Deck 4, Midship, or call 7-2805 from your stateroom phone for more information about our interactive group presentation.



### JACK-JACK'S INCREDIBLE DIAPER DASH

Calling all baby cruisers! It's time to take to the mat to see who's the fastest crawler of the seven seas! Register your baby 15 minutes prior to the big race.



### JACKPOT BINGO

CASH prizes and raffle prizes to be won in our family friendly Bingo sessions with your Cruise Staff. Those under the age of 18 must be accompanied by an adult to play.



### MICKEY 200

Don't eat your vegetables... race them in this wild and wacky charge to the finish line. May the best veggie win! (Limited Availability)



### MICKEY'S PIRATES IN THE CARIBBEAN

It's a Pirate Celebration, me hearties! Come experience all the pirate fun alongside Captain Mickey Mouse and his famous pirate crew. Play, dance and acquire all the pirate skills needed to become an official member of Mickey's Pirate Crew! (Weather Permitting)



### MIRROR MIRROR

Join the Magic Mirror in the fairest game show of them all, Mirror, Mirror. There's trivia, singing and even a relay race. Hi Ho, Hi Ho, it's off to play we go!



### SALUDOS AMIGOS FIESTA

Come see what Donald and his friends are up to this time. Bring the family out to this interactive dance party featuring fun Latin music! Your family will learn to salsa, merengue and just have a Latin good time!



### SEA YA REAL SOON

Mickey and Minnie along with the rest of the Walt Disney Characters invite you to join them in the ship's atrium for Sea Ya Real Soon. You won't want to miss this very special farewell presentation.



### SO YOU THINK YOU KNOW YOUR FAMILY?

This fun-filled family game show is always full of surprises. Find out how well you know, or don't know your family!



### WAKE UP WITH DISNEY JUNIOR

What happens when you experience unlimited fun with your favorite Disney Junior shows? You get an exciting dance party designed especially for preschoolers ages seven and under.



# YOUTH ACTIVITIES INFO & HIGHLIGHTS



## Dine & Play

A convenience for families, during your dinner, our Youth Activities counselors will be available at 6:45 pm or 9:15 pm at the entrance of Royal Court and Enchanted Garden and at 7:00 pm or 9:30 pm at the Animator's Palate dining room to bring registered children to join the fun in the Youth Activities areas.

## Pre-School Fun

Disney's Oceaneer Club is reserved for only those between 3-5 years of age. This is a time for them to become acclimated to Disney's Oceaneer Club, make new friends and join in on a lot of fun-filled programs and activities. Please note after Pre-School Fun has concluded, Disney's Oceaneer Club will be open for Secured Programming for ages 3-12.

## Pre-Tween Fun

Meet new friends! This is a time reserved exclusively for ages 9-12 where children can participate in exciting activities just for them. Please note after Pre-Tween Fun has concluded, Secured Programming for ages 3-12 may resume.

## Youth Activities Open House

Open House is an opportunity for all to come and participate in a variety of exciting activities and free time in the Oceaneer Club, Oceaneer Lab, Edge and Vibe throughout the cruise. During these times secured programming will still be offered in the other venue for those looking to check their children into care.

## Toddler Time for Families

A time for Toddlers and their families to explore and play together.



3 - 12 years old

## DOCTOR STRANGE

Unravel the mysteries of the Mystic Arts from none other than Doctor Strange.

## DOC MCSTUFFIN'S TOY HOSPITAL

Help Doc McStuffins diagnose and fix broken toys as you become a Jr. Toy Doctor at McStuffinsville Toy Hospital.

## FORCE TRAINING

Learn the ways of the Force and take on the First Order.



3 - 12 years old

## PLUTO'S PAJAMA PARTY

Bring the little ones in their pajamas but there will be anything but sleep when Pluto and friends host the ultimate slumber party!

## GET THE HOOK

A villainous villain has stolen Captain Hook's prized golden hook. Become a member of the Top Deck Detective Agency and help solve the clues to retrieve Hook's hook.

## PISTON CUP

It's Dinoco time and you're part of the pit crew! Design your own race car and see if you've got what it takes to end up in the winner's circle!



11 - 14 years old

## BRAINS AND BRAWNS

You will compete against each other to solve clues, take part in physical challenges, and reach the finish first.

## A PIRATE'S LIFE FOR ME

Calling all Pirates, we be! If ye have an adventurous spirit or pirate savvy, come spin the "Wheel of Destiny" for a treasure trove of fun be ripe for the takin' in this action packed pirate game show.



14 - 17 years old

## THAT'S HILARIOUS

Ever wanted to show off your comedy skills? Then be a part of the cast for the crazy improv show "That's Hilarious" and put on a live show for your friends.

## DIVE INTO DJ'ING

Hop on the turn tables and learn to scratch with our Cruise Staff DJ.

# BUENA VISTA THEATRE

Deck 4 & 5, Midship

## FEATURE MOVIES THIS VOYAGE

### SATURDAY - PORT CANAVERAL, FLORIDA

1:45 pm	PG	Family Movie Fun Time: Frozen II
5:15 pm	PG	The Lion King (2019)
8:15 pm	PG	The Lion King (2019)
10:45 pm	G	Toy Story 4



### SUNDAY - DAY AT SEA

12:15 pm	G	Onward Sneak Preview
12:45 pm	PG	Aladdin (2019)
6:00 pm	G	The Call of the Wild
8:30 pm	G	The Call of the Wild
11:00 pm	PG-13	Rogue One: A Star Wars Story



### MONDAY - DAY AT SEA

10:00 am	PG	Star Wars: Episode I. The Phantom Menace
12:45 pm	G	Toy Story 4
6:00 pm	PG	Maleficent: Mistress of Evil
8:30 pm	PG	Maleficent: Mistress of Evil
11:00 pm	PG	Star Wars: Episode IV. A New Hope



### TUESDAY - ROAD TOWN (TORTOLA), B.V.I.

10:15 am	PG	Star Wars: Episode II. Attack of the Clones
1:00 pm	PG	The Lion King (2019)
3:30 pm	PG	Maleficent: Mistress of Evil
6:00 pm	PG	Aladdin (2019)
8:30 pm	PG	Aladdin (2019)
11:00 pm	PG	Star Wars: Episode V. The Empire Strikes Back



### WEDNESDAY - ST. THOMAS, U.S. VIRGIN ISLANDS

9:00 am	PG-13	Star Wars: Episode III. Revenge of the Sith
11:45 am	PG	Frozen II
2:00 pm	G	The Call of the Wild
8:30 pm	G	Toy Story 4
10:45 pm	PG	Star Wars: Episode VI. Return of the Jedi



### THURSDAY - DAY AT SEA

10:00 am	PG	The Mandalorian
12:00 pm	PG-13	Star Wars: The Force Awakens
2:45 pm	PG-13	Star Wars: The Last Jedi
5:45 pm	PG-13	Star Wars: The Rise of Skywalker
8:30 pm	PG-13	The Call of the Wild
11:00 pm	PG-13	Star Wars: The Rise of Skywalker



### FRIDAY - DISNEY CASTAWAY CAY

8:30 am	PG	Maleficent: Mistress of Evil
11:00 am	PG	The Lion King (2019)
1:30 pm	PG	Aladdin (2019)
6:15 pm	PG	Frozen II
8:30 pm	PG	Frozen II
11:00 pm	PG-13	Star Wars: The Rise of Skywalker



Subject to change.



# MORE TO ENJOY ONBOARD

## NEW EARLY 2021 DISNEY CRUISE LINE ITINERARIES

New Early 2021 itineraries announced! Experience sailings to the Caribbean, The Bahamas or Mexico with your family. And returning for a limited time, tropical itineraries from New Orleans to the Caribbean or The Bahamas on the Disney Wonder. Visit Disney Vacation Planning, Deck 4, Midship for more information.

## DISNEY VACATION CLUB® MEMBER CELEBRATION

Join us as we welcome you onboard with a fun, interactive event where you can catch the latest updates at Disney Vacation Club! Please see a Disney Vacation Club Cast Member on Deck 4, Midship or call 7-2805 from your stateroom phone for more information.

## PORT SHOPPING INFORMATION

Meet Gail, your Port Shopping Guide at the Port Shopping Desk, Deck 4, Midship between 7:00 pm - 8:30 pm. Tonight, collect your FREE Cruise Ship charm and receive a bonus raffle ticket for tomorrow's Port Shopping Talk in the Buena Vista Theatre. Tune into channel 9 and don't miss tomorrow's event covering Cozumel, Grand Cayman and Falmouth, Buena Vista Theatre, Deck 4, Midship at 11:15 am.

## Connect@Sea

### FREE INTERNET EMBARKATION DAY SPECIAL

Sign up for a free 50 MB Internet package today and enjoy it throughout the cruise! This offer is only available from noon to midnight on the day your cruise begins. On your wireless device, simply find the "DCL-Guest" Wi-Fi Network, go to [www.dclguest.com](http://www.dclguest.com) to create an account, and get your free 50 MB of data to start sharing your memories even before you leave port! If you have any questions, ask our Connect@Sea Expert located at Deck 4, Midship. No purchase necessary. The free 50 MB package can only be used for the duration of the cruise. Only one free package per stateroom, but everyone can share it. Unused data from a package will not be reimbursed and it is non-transferable between voyages or ships.

### RELIGIOUS SERVICES

Groups who need a location to practice their faith may contact Guest Services for availability information.

## SENSES SPA & SALON



### DECK 11, FORWARD

Extension 7-1465

### RAINFOREST

Come enjoy our serenity lounge, with heated chairs, dry sauna, aromatherapy steam rooms and rainfall, misting showers.

\$229 for couples and \$129 for singles.

### COOLSCULPTING

Fear No Mirror with CoolSculpting. The premier non-invasive fat reduction and body contouring treatment. Eliminate fat and sculpt your body with a single treatment. Complimentary Consultations available now in the Rejuvenation Spa at Senses Spa & Salon.

### ONBOARD ACUPUNCTURE

Naturally effective for pain, arthritis, sea sickness, stress, digestion, weight loss, and much more. \$169/session.

### TRIPLE YOUR INDULGENCE

We recommend you enrich your day spa experience by choosing three of your favorite signature treatments and receive:

- 10% off your 1st signature treatment
- 20% off your 2nd signature treatment
- 30% off your 3rd signature treatment

AN 18% AUTO GRATUITY IS ADDED TO ALL SENSES SPA SERVICES.

## MERCHANDISE SHOPPING



### DECK 3, FORWARD

#### BVLGARI

We invite you to discover the latest Bvlgari jewelry, time piece and accessory collections that exemplify Italian excellence, contemporary design and exuberant craftsmanship. Join us tonight at 7:30 & 9:30pm for our Welcome Reception. BVLGARI BOUTIQUE in White Caps, Deck 3, Forward.

### EFFY JEWELRY TRUNK SHOW

Known for their bold designs, Effy jewelry is meticulously crafted with every design overseen by its founder, who plays a key role in the journey of each piece. A stylish collection of Effy jewelry pieces is now available onboard and are waiting for you to discover them in White Caps, Deck 3, Forward.

### TIFFANY & CO.

Visit Tiffany & Co on deck 4 Midship and discover a wide selection of iconic pieces including the Disney Cruise Line inspired jewelry in Sterling silver or Rose Gold! Join us tomorrow, Day at Sea 1 between 10:00 am and 11:00am for our Tiffany & Co Grand Celebration.

## SHUTTERS PHOTO GALLERY



### DECK 4, MIDSHIP

#### FAMILY PORTRAITS

Photos are taken in the lobby atrium to capture all your vacation memories. Make use of these opportunities to take a beautiful family photo by our Professional photographers and remember your cruise forever.

#### PHOTO BOOK

Turn your magical vacation memories into an impressive keepsake, a personal one of a kind Photo Book. Fill every page with memories of your cruise vacation. Orders close at 9:00 pm on the last day of the cruise.

#### PRIVATE STUDIO PORTRAITURE

Book our exclusive and contemporary Private Studio experience today and capture these memories. No obligation to purchase.

PHOTOS ARE AVAILABLE FOR VIEWING ON OUR INTERACTIVE PHOTO KIOSKS APPROXIMATELY FIVE HOURS AFTER BEING TAKEN AND ARE ONLY AVAILABLE FOR PURCHASE DURING THIS CRUISE.

## IMPORTANT INFORMATION

**Security Notice/Unaccompanied Minor Ashore**  
All Guests (including children) who wish to disembark or embark the ship are required to present their Key to the World card at the gangway. A photo ID is also required for those Guests who are 18 years of age or older. Guests under the age of 18 are required to have a Parent, Guardian or other responsible adult complete the "Traveling with Minors" section of "My Online Check-In" prior to sailing or sign an authorization form at the Guest Services Desk if they wish to go ashore unaccompanied or with any adult from another stateroom.

**Insect Repellent Advisory**  
The Centers for Disease Control and Prevention recommends wearing long-sleeved shirts and pants along with insect repellent to protect against mosquito bites and related illnesses when going ashore. Insect repellent is available for purchase in Sea Treasures. When using both sunscreen and insect repellent, use sunscreen first and apply insect repellent on top of sunscreen.

**Corridor Quiet Hours**  
As a courtesy to all our Guests, please recognize quiet hallway hours from 10:00 pm til 8:00 am.

**No Reserved Seats Policy**  
As a courtesy to all our Guests, we kindly advise that the saving of seats is not permitted in the Walt Disney Theatre, and the saving of the sun loungers is not permitted on Deck 11, 12, and 13. Items left unattended will be returned to lost and found at Guest Services, Deck 3 Midship.

**Cold and Flu Reminder**  
Please wash hands frequently and thoroughly, particularly before meals. Contact the Health Center by dialing 7-1927, should anyone in your party become ill.

**Inclement Weather**  
For the safety of all Guests, outdoor events may be changed due to unforeseen weather conditions.

**Smoking**  
For the comfort of our Guests, the following areas are designated as smoking areas:

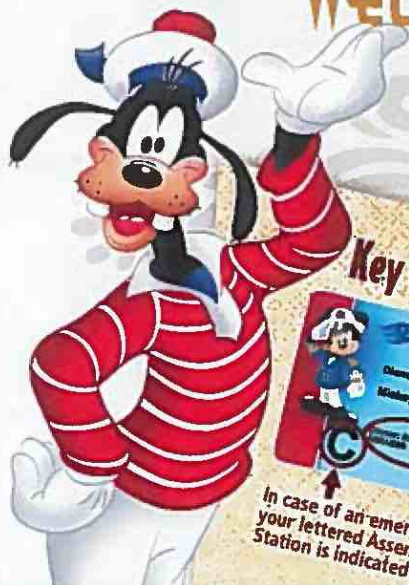
- \*Deck 13, forward, port side by Currents
  - \*Deck 12, aft, port side outdoor area that is accessible through the Meridian Lounge
  - \*Deck 4, aft, port side from 6:00 pm to 6:00 am only (all of Deck 4 is non-smoking from 6:00 am to 6:00 pm)
- Smoking is prohibited inside all Guest staterooms and on stateroom verandahs. Guests found smoking in their staterooms or on their verandahs will be charged a \$250 stateroom recovery fee. Electronic cigarettes may only be used in designated smoking areas.

**Walt Disney Theatre**  
Theatrical performances may use artificial fog, strobe lights, pyrotechnics and other special effects. For the safety of our performers and the comfort of those around you, the use of any photography, video recording device or any electronic equipment is prohibited.

**Verandah Safety**  
Please do not leave any personal items on your verandah that may be blown overboard or present a fire hazard if left unattended. Do not throw anything over the ship's side. Guests should not sit, lean or climb on the railing or leave children unattended on the verandah. Do not open the verandah and stateroom doors simultaneously as this may create a wind effect and could cause the doors to slam unexpectedly.



# WELCOME ABOARD!

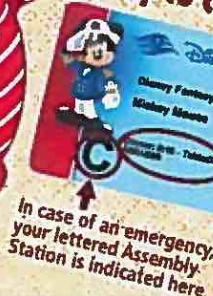


## SAILING AWAY

It's time to go Sailing Away! Join Mickey and Minnie along with Tinker Bell and the rest of the gang as they welcome you aboard the Disney Fantasy.

**Deck Stage, Deck 11, Midship, 4:30 pm**

### Key to the World Card Information



- Disney Cruise Line
- Disney Fantasy
- Mickey Mouse
- Disney Cruise Line
- Disney Cruise Line
- Dinner seatings are 5:45 pm or 8:15 pm.
- Your table number for the cruise is located after your dinner seating.
- Dinner locations and rotation are indicated by letters under your dinner time.
- A - Animator's Palette, Deck 3, Aft
- E - Enchanted Garden, Deck 2, Midship
- R - Royal Court, Deck 3, Midship

Afternoon	1:45	2:00	2:15	2:30	2:45	3:00	3:15	3:30	3:45	4:00	4:15	4:30	4:45	5:00	5:15	5:30	5:45	6:00	6:15	6:30	6:45		
FUNNELVISION	A Goofy Movie (G)  Open Captioning Funnel Vision											Mulan (G)  Open Captioning Funnel Vision											
BUENA VISTA THEATRE	Family Movie Fun Time: Frozen II (PG) Duration: 1 Hour 44 Minutes											The Lion King (2019) (PG) Duration: 1 Hour 58 Minutes											
CHARACTERS												Goofy <small>Lobby Atrium</small>											
FUN FOR ALL AGES	Walking Ship Tour <small>Preludes</small>				Disney Vacation Club Member Celebration <small>D Lounge</small>								Sailing Away Deck 11 Stage				Mickey Balcony		Minnie Balcony				
	Thor Becoming Worthy  Disney's Oceaneer Club				Walking Ship Tour  Disney's Oceaneer Club				BB-8 Recruitment  Disney's Oceaneer Club								Acoustic Violin with Irine Gamdzhashvili <small>Lobby Atrium</small>				A Fantasy Come True: Welcome Show Walt Disney Theatre		
ADULTS	Spa Open House <small>Senses Spa &amp; Salon</small>											Spa Raffle <small>Senses Spa &amp; Salon</small>											
VIBE 14-17 YEARS OLD	Youth Activities Open House & Registration																						
EDGE 11-14 YEARS OLD	Youth Activities Open House & Registration																						
OCEANEER LAB 5-12 YEARS OLD	Open House: Magic PlayFloor  Venue Tour Open House																						
OCEANEER CLUB 3-12 YEARS OLD	Thor Becoming Worthy  Open House: Venue Tour BB-8 Recruitment  Open House																						

**Mandatory**  
**Guest Assembly Drill**  
**4:00 pm**  
**(All Guests must attend)**

All ship services will be suspended during this time.

Please refer to the posted drill instructions on the back of your stateroom door prior to heading to your Assembly Station.

You will not need your life jacket for the Guest Assembly Drill.



Your Assembly Station is indicated on your Key To The World card.

Sailing Away Deck 11 Stage		Mulan (G)  Open Captioning Funnel Vision					
		The Lion King (2019) (PG) Duration: 1 Hour 58 Minutes					
		Goofy <small>Lobby Atrium</small>					
Sailing Away Deck 11 Stage		Mickey Balcony		Minnie Balcony			
		Acoustic Violin with Irine Gamdzhashvili <small>Lobby Atrium</small>				A Fantasy Come True: Welcome Show Walt Disney Theatre	
Kids MelBath Padi Party (Nom. Fee) Senses Spa & Salon		Live Lounge with FireLites La Piazza					
		Cruisin' Solo Coffee Time Cove Café				Soul Music with Kelly Jarrard <small>Quiet Cove Pool</small>	
		Top 40 Hits with Kelly Jarrard <small>Quiet Cove</small>					
Youth Activities Open House				Open for Teens		Cards Tournament	
Youth Activities Open House				Open for Tweens		Foosball Tournament	
Open House		Open for Seated Activities		Meet Your Counselors		Magic PlayFloor	
Open House		Magic Playfloor		Venue Tour		Open House	
Open House		Magic Playfloor		Venue Tour		Open House	
Open House		Magic Playfloor		Venue Tour		Open House	
Open House		Magic Playfloor		Venue Tour		Open House	
Open House		Magic Playfloor		Venue Tour		Open House	
Open House		Magic Playfloor		Venue Tour		Open House	
Open House		Magic Playfloor		Venue Tour		Open House	
Open House		Magic Playfloor		Venue Tour		Open House	
Open House		Magic Playfloor		Venue Tour		Open House	
Open House		Magic Playfloor		Venue Tour		Open House	
Open House		Magic Playfloor		Venue Tour		Open House	
Open House		Magic Playfloor		Venue Tour		Open House	
Open House		Magic Playfloor		Venue Tour		Open House	
Open House		Magic Playfloor		Venue Tour		Open House	
Open House		Magic Playfloor		Venue Tour		Open House	
Open House		Magic Playfloor		Venue Tour		Open House	
Open House		Magic Playfloor		Venue Tour		Open House	
Open House		Magic Playfloor		Venue Tour		Open House	
Open House		Magic Playfloor		Venue Tour		Open House	
Open House		Magic Playfloor		Venue Tour		Open House	
Open House		Magic Playfloor		Venue Tour		Open House	
Open House		Magic Playfloor		Venue Tour		Open House	
Open House		Magic Playfloor		Venue Tour		Open House	
Open House		Magic Playfloor		Venue Tour		Open House	
Open House		Magic Playfloor		Venue Tour		Open House	
Open House		Magic Playfloor		Venue Tour		Open House	
Open House		Magic Playfloor		Venue Tour		Open House	
Open House		Magic Playfloor		Venue Tour		Open House	
Open House		Magic Playfloor		Venue Tour		Open House	
Open House		Magic Playfloor		Venue Tour		Open House	
Open House		Magic Playfloor		Venue Tour		Open House	
Open House		Magic Playfloor		Venue Tour		Open House	
Open House		Magic Playfloor		Venue Tour		Open House	
Open House		Magic Playfloor		Venue Tour		Open House	
Open House		Magic Playfloor		Venue Tour		Open House	
Open House		Magic Playfloor		Venue Tour		Open House	
Open House		Magic Playfloor		Venue Tour		Open House	
Open House		Magic Playfloor		Venue Tour		Open House	
Open House		Magic Playfloor		Venue Tour		Open House	
Open House		Magic Playfloor		Venue Tour		Open House	
Open House		Magic Playfloor		Venue Tour		Open House	
Open House		Magic Playfloor		Venue Tour		Open House	
Open House		Magic Playfloor		Venue Tour		Open House	
Open House		Magic Playfloor		Venue Tour		Open House	
Open House		Magic Playfloor		Venue Tour		Open House	
Open House		Magic Playfloor		Venue Tour		Open House	
Open House		Magic Playfloor		Venue Tour		Open House	
Open House		Magic Playfloor		Venue Tour		Open House	
Open House							

### Mandatory Guest Assembly Drill 4:00 pm

(All Guests must attend)

All ship services will be suspended during this time.

Please refer to the posted drill instructions on the back of your stateroom door prior to heading to your Assembly Station. You will not need your life jacket for the Guest Assembly Drill.



Your Assembly Station is indicated on your Key To The World card.

## Disney FANTASY

Evening	7:00	7:15	7:30	7:45	8:00	8:15	8:30	8:45	9:00	9:15	9:30	9:45	10:00	10:15	10:30	10:45	11:00	11:15	11:30	11:45	12:00	
FUNNELVISION	Brave (PG)  Open Captioning Funnel Vision							Wreck-It Ralph (PG)  Open Captioning Funnel Vision							Bedtime Stories (PG)  Open Captioning Funnel Vision							
BUENA VISTA THEATRE								The Lion King (2019) (PG) Duration: 1 Hour 58 Minutes							Toy Story 4 (G) Duration: 1 Hour 40 Minutes							
CHARACTERS		Pluto <small>Lobby Atrium (V)</small>		Goofy <small>Lobby Atrium (V)</small>								Mickey <small>Balcony</small>		Minnie <small>Balcony</small>								
		Mickey Mouse <small>Balcony</small>								Donald <small>Lobby Atrium (V)</small>		Pluto <small>Lobby Atrium (V)</small>										
FUN FOR ALL AGES			Disney Tunes Trivia <small>D Lounge</small>					A Fantasy Come True: Welcome Show <small>Walt Disney Theatre</small>			Marvel Trivia <small>D Lounge</small>		Family Fusion <small>D Lounge</small>		Family Superstar Karaoke <small>D Lounge</small>							
			Violin Dance Party with Irine Gamdzhashvili <small>Lobby Atrium</small>								Violin Rock, Pop and R&B with Irine <small>Lobby Atrium</small>				Share the Magic! <small>Lobby Atrium</small>							
ADULTS			'70s Music Trivia <small>The Tube</small>								Cruise Staff DJ <small>The Tube</small>		Intuition <small>The Tube</small>		Variety: Heath Hyche <small>The Tube</small>		Late Night Lounge with Cruise Staff DJ <small>The Tube</small>					
			Classic Rock with Kelly <small>Quiet Cove Pool</small>			Cocktail Music with Josh Freilich <small>Ooh La La</small>								1600 Senses Spa & Salon: Head & Neck Treat <small>Cove Cafe</small>								
VIBE <small>14-17 YEARS OLD</small>		Wii Competition			Foosball Tournament				GAGA Ball			Profiles	Ice Breakers		The Download			Heroes and Villains				
EDGE <small>11-14 YEARS OLD</small>	Game Challenge				Tween Choice					Ice Breakers		Meet Your Counselors				Profiles	Taking it to The Edge		GAGA Ball		Heroes and Villains	
OCEANEER LAB <small>5-12 YEARS OLD</small>	Ice Breakers		Super Sloppy Science						Game Challenge		Human Bingo		Four Square				Detective School		Scavenger Hunt			
OCEANEER CLUB <small>3-12 YEARS OLD</small>	Parachute Games		Join the Lion Guard						Magic PlayFloor		Dress Up Fun		Once Upon a Time				Wacky Relays		Doctor Strange Defy the Dark Dimension			





Assistance available at the entrance to the Walt Disney Theatre 30 minutes prior to show time

## Character Experience Reservations

*Preludes, Deck 3, Forward - 12:00 pm - 2:00 pm*

The following appearances require a reservation. Space is limited. For Guests who did not book online, a limited number of reservations are available for:

- Princess Gathering
- Frozen Gathering
- Disney Junior Character Breakfast
- Star Wars Meet & Greet

## Character Appearances

### SAILING AWAY

Deck 11 Stage - 4:30 pm

### GOOFY

Lobby Atrium (V) - 5:30 pm & 7:45 pm

### PLUTO

Lobby Atrium (V) - 7:15 pm & 10:00 pm

### MICKY MOUSE

Balcony - 5:15 pm, 7:15 pm & 9:30 pm

### MINNIE MOUSE

Balcony - 5:45 pm & 10:00 pm

### DONALD DUCK

Lobby Atrium (V) - 9:30 pm

(H) Hallway - (S) Starboard Side - (P) Port Side - (V) Vestibule

For details of daily Disney character appearances, refer to the character line on your Navigator Grid, the Disney Cruise Line Navigator App, or the digital character board in the Lobby Atrium.

Lines close 15 minutes after given times.

## SHIP DIRECTORY

### YOUTH ACTIVITIES

DISNEY'S OCEANEER CLUB	DECK 5, MID	12:00 PM - 3:30 PM
		4:30 PM - 12:00 AM
DISNEY'S OCEANEER LAB	DECK 5, MID	12:00 PM - 3:30 PM
		4:30 PM - 12:00 AM
EDGE	DECK 13, MID	12:00 PM - 3:30 PM
		4:30 PM - 12:00 AM
IT'S A SMALL WORLD NURSERY	DECK 5, MID	12:00 PM - 3:30 PM
		4:30 PM - 11:00 PM
VIBE	DECK 4, FWD	12:00 PM - 3:30 PM
		4:30 PM - 12:00 AM

### POOLS & MORE

\* Children under 12 must have adult supervision in pool areas.

AQUADUCK	DECK 12, MID	12:00 PM - 3:00 PM
		4:30 PM - 10:00 PM
AQUALAB	DECK 12, AFT	12:00 PM - 3:15 PM
		4:30 PM - 6:00 PM
DONALD'S POOL	DECK 11, MID	12:00 PM - 3:15 PM
		6:00 PM - 10:00 PM
MICKEY'S POOL	DECK 11, MID	12:00 PM - 3:15 PM
		4:30 PM - 10:00 PM
MICKEY'S SLIDE	DECK 11, MID	12:00 PM - 3:15 PM
		4:30 PM - 6:00 PM
NEMO'S REEF	DECK 11, MID	12:00 PM - 3:00 PM
		4:30 PM - 6:00 PM
QUIET COVE POOL (18+)	DECK 11, FWD	12:00 PM - 11:00 PM
SATELLITE FALLS (18+)	DECK 13, FWD	12:00 PM - 8:00 PM

Please note, "selfie sticks" are not permitted in any aquatic area. Complimentary pool vests are available for children to use in the pools onboard. They are located on the pool deck.

### RECREATION

GOLF/SPORTS SIMULATORS	DECK 13, AFT	4:30 PM - 6:00 PM
GOOFY GOLF	DECK 13, AFT	5:30 PM - 10:00 PM
GOOFY'S SPORTS DECK	DECK 13, AFT	12:00 PM - 3:00 PM
		4:30 PM - 6:00 PM
MIDSHIP DETECTIVE AGENCY	DECKS 2 & 5, MID	11:30 AM - 10:00 PM
PORT ADVENTURES DESK	DECK 5, MID	12:00 PM - 3:30 PM
		4:30 PM - 8:30 PM
SENSES FITNESS CENTER (18+)	DECK 11, FWD	11:30 AM - 10:00 PM

### GENERAL INFORMATION

CONNECT@SEA	DECK 4, MID	7:00 AM - 9:00 AM
		1:00 PM - 3:30 PM
		7:00 PM - 10:00 PM
DISNEY VACATION CLUB	DECK 4, MID	5:00 PM - 10:00 PM
DISNEY VACATION PLANNING	DECK 4, MID	7:00 PM - 8:00 PM
GUEST SERVICES	DECK 3, MID	24 HOURS
HAIR BRADING	DECK 11, MID	1:30 PM - 6:00 PM
MEDICAL HEALTH CENTER	DECK 1, FWD	4:30 PM - 7:00 PM
PRELUDES	DECK 3, FWD	SHOWTIMES
SENSES SPA AND SALON	DECK 11, FWD	11:30 AM - 10:00 PM
SHUTTERS PHOTO GALLERY	DECK 4, MID	7:00 PM - 10:30 PM

### SHOPPING

BIBBIDI BOBBIDI BOUTIQUE	DECK 5, MID	12:00 PM - 3:00 PM
		5:00 PM - 9:00 PM
MICKEY'S MAINSAIL	DECK 3, FWD	5:45 PM - 11:00 PM
PORT SHOPPING DESK	DECK 4, MID	7:00 PM - 8:30 PM
SEA TREASURES	DECK 3, FWD	6:45 PM - 11:00 PM
TIFFANY & CO.	DECK 4, MID	5:45 PM - 11:00 PM
VISTA GALLERY	DECK 2, MID	
BVLGARI	DECK 3, FWD	5:45 PM - 11:00 PM
WHITE CAPS	DECK 3, FWD	5:45 PM - 11:00 PM
WHOZITS & WHATZITS	DECK 11, MID	6:00 PM - 9:00 PM

DUE TO PORT REGULATIONS, WHEN THE SHIP IS DOCKED, THE STORES MUST REMAIN CLOSED.

## DINING & LOUNGES

### LUNCH

ANIMATOR'S PALATE	DECK 3, AFT	11:45 AM - 2:00 PM
CABANAS	DECK 11, AFT	11:45 PM - 3:15 PM
FILLMORE'S FAVORITES	DECK 11, MID	12:00 PM - 3:30 PM
		4:15 PM - 6:30 PM
LUIGI'S PIZZA	DECK 11, MID	12:00 PM - 3:30 PM
		4:15 PM - 6:30 PM
TOW MATER'S GRILL	DECK 11, MID	12:00 PM - 3:30 PM
		4:15 PM - 10:00 PM

### DINNER

ANIMATOR'S PALATE	DECK 3, AFT	5:45 PM & 8:15 PM
ENCHANTED GARDEN	DECK 2, MID	5:45 PM & 8:15 PM
PALO (18+) (Reservations Req. & Now Fee Apply)	DECK 12, AFT	6:00 PM - 8:30 PM
REMY (18+) (Reservations Req. & Now Fee Apply)	DECK 12, AFT	6:00 PM - 8:30 PM
ROYAL COURT	DECK 3, MID	5:45 PM & 8:15 PM

### LATE NIGHT SNACKS

LA PIAZZA (18+)	DECK 4, AFT	10:45 PM - 11:30 PM
LUIGI'S PIZZA	DECK 11, MID	9:30 PM - 12:00 AM

### ADDED FEATURES

BEVERAGE STATION	DECK 11, MID	24 HOURS
EYE SCREAM	DECK 11, MID	12:00 PM - 3:30 PM
		4:15 PM - 11:00 PM
ROOM SERVICE	DIAL 0	24 HOURS
SWEET ON YOU	DECK 11, AFT	11:30 AM - 3:30 PM
		4:15 PM - 10:30 PM

### ENTERTAINMENT - LOUNGES - BARS

Adults must be 21 and older to consume alcoholic beverages.

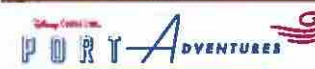
BON VOYAGE	DECK 3, MID	11:45 AM - 10:30 PM
COVE BAR (18+)	DECK 11, FWD	11:45 AM - 10:30 PM
COVE CAFE (18+)	DECK 11, FWD	11:45 AM - 12:00 AM
CURRENTS (18+)	DECK 13, FWD	11:45 AM - 11:00 PM
D LOUNGE	DECK 4, MID	SHOWTIMES
FROZONE TREATS	DECK 11, MID	11:45 AM - 6:00 PM
LA PIAZZA (18+ AFTER 9:00 P.M.)	DECK 4, AFT	11:45 AM - 2:00 AM
MERIDIAN (18+)	DECK 12, AFT	5:00 PM - 12:00 AM
O'GILLS PUB (18+ AFTER 9:00 P.M.)	DECK 4, AFT	11:45 AM - 12:00 AM
OOH LA LA (18+)	DECK 4, AFT	5:00 PM - 12:00 AM
OUTLOOK (18+)	DECK 4, MID	
SENSES JUICE BAR	DECK 11, FWD	11:30 AM - 6:00 PM
SKYLINE (18+)	DECK 4, AFT	5:00 PM - 12:00 AM
THE TUBE (18+ AFTER 9:00 P.M.)	DECK 4, AFT	6:00 PM - 12:00 AM
VISTA CAFE	DECK 4, MID	11:45 AM - 10:30 PM
WAVES	DECK 12, AFT	11:45 AM - 5:00 PM

Public Health Advisory: Consuming raw or under-cooked meats, poultry, seafood, shellfish, or eggs may increase your risk for food borne illness, especially if you have certain medical condition.



### MIDSHIP DETECTIVE AGENCY

Use your detective know-how and our special detective "badge" to search the ship and catch your criminal! Deck 2 & 5, Midship Kiosks.



Visit the Port Adventures Desk, Deck 5, Midship, for bookings & questions.

### IMPORTANT NUMBERS

Fire/Security:	7-3001
Medical Emergency:	7-3000
Health Center:	7-1927