

VOYAGE NAVIGATOR

SUNDAY
FEBRUARY 02, 2020

TO

THURSDAY
FEBRUARY 06, 2020

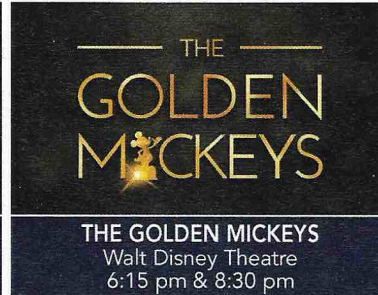
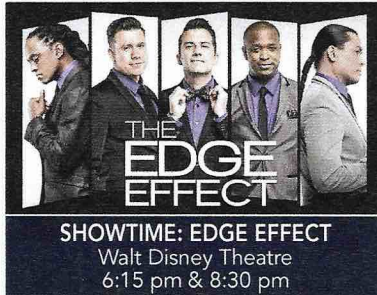
CRUISE HIGHLIGHTS

SUNDAY

SAN JUAN, PUERTO RICO
Port Departure: 6:00 pm
All Aboard: 5:00 pm
Attire: Cruise Casual

MONDAY

DAY AT SEA
Attire: Cruise Casual



TUESDAY

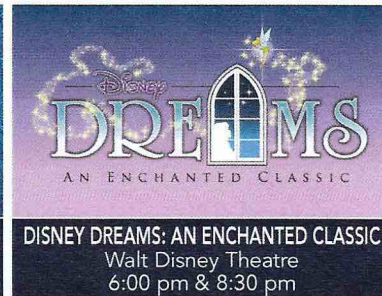
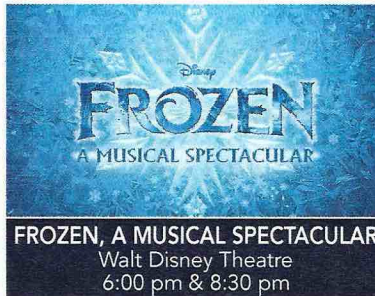
DISNEY CASTAWAY CAY
All Ashore: 9:30 am
All Aboard: 4:45 pm
Attire: Pirate or Cruise Casual

WEDNESDAY

DAY AT SEA
Attire: Optional Dress Up

THURSDAY

DAY AT SEA
Attire: Cruise Casual



Subject to change.

WELCOME ABOARD!

YOUR STATEROOM & LUGGAGE

Staterooms will be ready at 1:30 pm. To allow your Stateroom Host/ess time to prepare your room, please do not remove the blue stanchion straps. Stateroom hosts will deliver luggage throughout the day until 5:30 pm.

STATEROOMS WITH BUNK BEDS

Bunk beds are recessed into the ceiling and will be prepared during evening turndown service by your Stateroom Host/ess.

STATEROOM SAFE

Each stateroom is equipped with a secured storage safe. Instructions for use are located on the safe.

TO CHANGE DINING ASSIGNMENT

Requests for different seating times will be taken today:
12:30 pm - 3:30 pm; Book in Azure, Deck 3, Forward or please dial 7-10891 and leave a voicemail.

PALO DINING RESERVATIONS

Reservations are required and will be taken on a first come basis today:
12:30 pm - 3:30 pm; Book in Azure, Deck 3, Forward or please dial 7-6843 and leave a voicemail.

Adult Exclusive Dining Opportunity! Guests are invited to make 2 dinner reservations at our adult-exclusive restaurant, Palo. This includes one reservation on embarkation evening and one more on another night of the cruise. Reservations are subject to availability and a specialty dining charge will apply.

DINNER

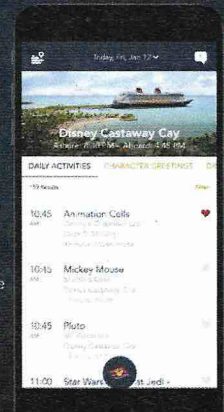
5:45 pm - First seating 8:15 pm - Second seating
Please check your Key To The World Card for details of your dining rotation, and bring them to your specific dining location. There is no need to wait in line prior to dinner. Dining Rooms open at designated seating times and your table is reserved each night of your cruise.

AP = Animator's Palate, Deck 4, Aft TR = Triton's, Deck 3, Midship TP = Tiana's Place, Deck 3, Aft

DOWNLOAD THE DISNEY CRUISE LINE NAVIGATOR APP

BEFORE YOU SAIL AWAY

Explore all that's going on aboard your Disney cruise.



Tap the Disney Cruise Line logo to view your Personal Itinerary.

Send messages to your friends and family on the ship.

Your Personal Itinerary includes all activities booked at home and onboard.

Create the most memorable experiences during your Disney Cruise Line vacation with Port Adventures! Our Port Adventures are designed for you to see the best our ports have to offer. Stop by the Port Adventures Desk, Deck 3, Midship where our friendly team will be happy to assist you plan your adventure!
There is an adventure for everyone on your Disney Wonder® vacation.



IMPORTANT NUMBERS Fire/Security: 7-3001 Medical Emergency: 7-3000 Health Center: 7-1927

ADULT ACTIVITY HIGHLIGHTS



1820 SOCIETY (GUESTS 18-20 YEARS ONLY)
1820 Society is an exclusive option for young adult Guests. Come meet fellow passengers and learn about the excellent activities that the Disney Wonder offers to create the perfect cruise experience.



80'S FLASHBACK
The 80's are back! Join your Cruise Staff team, in testing your 80's knowledge in this high energy 80's revival.



ANYONE CAN COOK
Every Chef has a specialty, and ours is no exception. Get a taste of perfection with each recipe.

ART OF THE THEME SHOW TOUR

Join us for a guided tour highlighting the design, Imagineering and artistry of the ship. This tour is reserved for Guests 18 and over.

CRUISIN' SOLO GATHERING

Single, single parent or just traveling alone? Join your Cruise Staff for an informal gathering.



DISNEY AT SEA WITH D23
Join us for an exciting look at what's new and what's next from all of Disney's wonderful worlds! From theme parks and movies, to vision, music and beyond, you won't want to miss a minute of this new show presented by D23, Disney's official fan club.



MATCH YOUR MATE
It's time to play everyone's favorite couples game show, Match Your Mate!



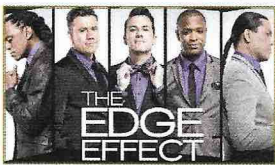
Senses Spa & Salon has a variety of seminars and fitness classes available throughout the cruise. Pamper yourself with therapeutic spa treatments of heat, steam, rain and water in luxurious and tranquil private rooms. Deck 9, Forward.

BEVERAGE SEMINARS

Your Beverage team has a host of tastings and seminars to entertain and educate you. Stop by French Quarter Lounge, Deck 3, Aft to pre-book these experiences (nominal fee applies).

Mixology - Stem to Stern Wine Tasting - Martini Tasting - Mojito Tasting
Beer Tasting - Cognac Tasting - Whisky Tasting - Champagne Tasting
Tequila & Margarita Tasting - Chocolate & Liquor Tasting - Rum Tasting

FEATURED VARIETY ACTS THIS VOYAGE



THE ACAPELLA VOCALS OF EDGE EFFECT

The innovative vocal collaboration, The Edge Effect is taking music to a whole new level, and in ways you might not expect. The Edge Effect combines pop, R & B, jazz, rock, and funk in a vocal show unlike any other. The Edge Effect's signature

sound blurs the genre line and weaves a colorful tapestry of infectious beats, intricate harmonies, and spectacular vocal acrobatics. Their vast repertoire knows no boundaries to style or genre, and the band's stunning reinterpretations of musical favorites, as well as inventive, contemporary original songs, make for an unparalleled entertainment experience for all ages.



THE INTERACTIVE COMEDIC JUGGLING OF DAVID AIKEN

Since 1981 David Aiken has performed as 'The Checkerboard Guy,' a Comic Daredevil who's manic energy, zany sense of humor and robust skill set have been his passport to the globe! There's an

anticipation, a palpable 'what's going to happen next' in every aspect of how this guy delivers his material. This is a show that destroys any performer audience barrier in a spectacle that turns audience volunteers into Heroes and has everyone cheering with approval. It's a knock down, roll around, bust a gut sort of romp that'll leave audiences young and old clamoring for more.

FUN FOR ALL AGES HIGHLIGHTS



A PIRATES LIFE FOR ME

Calling all Pirates, we be! If you have an adventurous spirit or pirate savvy, come spin the "Wheel of Destiny" for a treasure trove of fun be ripe for the takin' in this action packed pirate game show.



CASTAWAY CAY 5K REGISTRATION (10+)

Sign up today for the Castaway Cay 5K! Please visit the Port Adventures Desk or the Guest Services Desk to register at any time prior to our arrival at Disney Castaway Cay. Please note that runners must be 10 years of age or older to participate.



DISNEY MOVIE CHALLENGE POOLSIDE

So you like movies? And you like bingo? This deck party has them both! Come on out to watch all your favorite movie clips and just maybe your team will win the opportunity to choose the movie played by the pool today!



DISNEY VACATION CLUB GROUP PREVIEW

Join us for our interactive group presentation to learn about taking magical vacations year after year! For more information please see a Disney Vacation Club Cast Member on Deck 4, Midship, or call 7-2805 from your stateroom phone.



FROZEN PHRASES

Contestants attempt to guess a series of words or phrases based on descriptions given to them by their teammates as they race against the clock in this Frozen themed game show.



JACK-JACK'S INCREDIBLE DIAPER DASH

Calling all baby cruisers! It's time to take to the mat to see who's the fastest crawler of the seven seas! Register your baby 15 minutes prior to the big race.



JACKPOT BINGO

CASH prizes and raffle prizes to be won in our family friendly Bingo sessions with your Cruise Staff. Those under the age of 18 must be accompanied by an adult to play!



MAGIC WORKSHOP

You may have been fooled before but will now have the opportunity to learn how to trick your friends and family in this close up magic workshop with one of our Cruise Staff hosts.



MICKEY MANIA

Join us for the ultimate test of your Disney knowledge as we play our live, interactive game show, that's "insania!"



MICKEY'S SAIL-A-WAVE PARTY!

Mickey's Sail-a-Wave Deck Party is a high energy, Disney Bounding, countdown celebration happening atop the Disney Wonder! Wave goodbye to work & school, and hello to vacation! Mickey and the gang throw a Sail-a-Wave celebration you won't forget!!



PIRATES IN THE CARIBBEAN DECK PARTY

Yer Disney Friends are all set for a swashbucklin' good time! It's a Pirate Celebration, me hearties! Hoist yourse to Deck 9 to enjoy a rowdy buccaneer bash we call Pirates IN the Caribbean Deck Party.



SO YOU THINK YOU KNOW YOUR FAMILY?

This fun-filled family game show is always full of surprises. Find out how well you know, or don't know your family!



SPIRITS & SPIRITS GAME SHOW

The French Quarter comes to life with this mysterious game of choice and chance. It is up to you to challenge the Spirits to see if you have what it takes to win!



WHO WANTS TO BE A MOUSEKETEER?

Your chance to get into the "hot seat" and win limited edition prizes. Or, play along as part of our live studio audience.



'TIL WE MEET AGAIN

The world-famous Disney Characters and some of your new friends from the Disney Wonder stage shows bid you a charming farewell.

Please check the Disney Cruise Line App or Personal Navigator for all times and locations.

YOUTH ACTIVITIES INFO & HIGHLIGHTS



Dine & Play

As a convenience for families dining at 8:15 pm, our Youth Activities counselors will be available at the entrance of each restaurant to bring registered children to join the fun in the Youth Activities areas at the following times:

- 9:15 pm at the entrance of Triton's,
- 9:30 pm at the entrance of Tiana's Place and Animator's Palate.

Pre-School Fun

Disney's Oceaneer Club is reserved for only those between 3-5 years of age. This is a time for them to become acclimated to Disney's Oceaneer Club, make new friends and join in on a lot of fun-filled programs and activities. Please note after Pre-School Fun has concluded, Disney's Oceaneer Club will be open for Secured Programming for ages 3-12.

Youth Activities Open House

Open House is an opportunity for all to come and participate in a variety of exciting activities and free time in the Oceaneer Club, Oceaneer Lab, Edge and Vibe throughout the cruise. During these times secured programming will still be offered in the other venue for those looking to check their children into care.

Youth Activities Venue Tour

Come and take a tour of Disney's Oceaneer Club and Disney's Oceaneer Lab. This informative tour will give you the information you need to know about our exciting spaces and activities offered for children ages 3-12. Please see your Personal Navigator or the Navigator App for times.



3 - 12 years old

JOIN THE LION GUARD

Harness your inner animal and find out if you have what it takes to join the Lion Guard!

VAMPIRINA DANDELVANIA DANCE PARTY

Get ready to show off your own monstrous style and spine chilling dance moves with Vampirina in a spook-tacular Dancelvania Party!

FANCY IT YOURSELF WITH FANCY NANCY

Join the School de Fancy to practice your fanciness with the number one expert on the subject, Fancy Nancy.



3 - 12 years old

LAVA FLOW

Build your own volcano and watch it erupt as you learn about the physics of volcanoes.

MINNIE'S CAPTAIN ACADEMY

Minnie Mouse is looking for new recruits for her Captain Academy. Young Cruisers will test their nautical skills in various challenges and games as they learn what it takes to become an honorary captain.

PISTON CUP CHALLENGE

It's Dinoco time and you're part of the pit crew! Design your own race car and see if you've got what it takes to end up in the winner's circle!



11 - 14 years old

HEROES AND VILLAINS

Join your favorite hero or villain team on a series of activities that will take place throughout the cruise.

DESCENDANT'S DEN DJ SPIN OFF

Photo Booth! DJ lessons! Fun games! Sing! Laugh! Dance! It's the next generation of fun - Descendants style!



14 - 17 years old

GOTCHA

You will try to eliminate your victim by various methods collecting points throughout the day, last person standing with the most points wins.

THAT'S HILARIOUS

Ever wanted to show off your comedy skills? Then be a part of the cast for the crazy improv show "That's Hilarious" and put on a live show for your friends.

BUENA VISTA THEATRE

Deck 5, Aft

FEATURE MOVIES THIS VOYAGE

SUNDAY - SAN JUAN, PUERTO RICO

5:45 pm	PG	Aladdin (2019)	
8:30 pm	PG	Aladdin (2019)	
11:00 pm	PG	The Lion King (2019)	CC Open Captioning

MONDAY - DAY AT SEA

8:30 am	G	Family Movie Fun Time: Toy Story 4	
10:30 am	PG	Aladdin (2019)	CC Open Captioning
1:00 pm	G	Toy Story 4	
3:00 pm	PG	The Lion King (2019)	
5:30 pm	PG	Maleficent: Mistress of Evil	
8:15 pm	PG	Maleficent: Mistress of Evil	
10:45 pm	PG-13	Star Wars: The Rise of Skywalker	3D

TUESDAY - DISNEY CASTAWAY CAY

9:15 am	PG	Maleficent: Mistress of Evil	CC Open Captioning
12:00 pm	PG	The Lion King (2019)	
2:30 pm	PG	Aladdin (2019)	
5:00 pm	PG-13	Star Wars: The Rise of Skywalker	3D
8:00 pm	PG-13	Star Wars: The Rise of Skywalker	3D
11:00 pm	PG	Maleficent: Mistress of Evil	

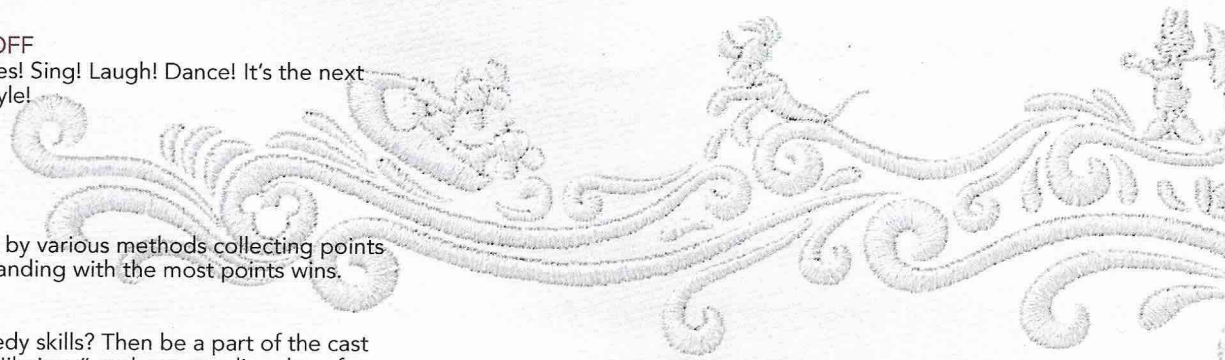
WEDNESDAY - DAY AT SEA

9:00 am	PG	Family Movie Fun Time: Frozen II	
11:30 am	PG-13	Star Wars: The Rise of Skywalker	CC Open Captioning
2:30 pm	PG	The Lion King (2019)	
5:15 pm	G	Toy Story 4	3D
8:15 pm	G	Toy Story 4	3D
10:30 pm	PG	Frozen II	

THURSDAY - DAY AT SEA

8:30 am	PG	Family Movie Fun Time: Aladdin (2019)	
11:00 am	G	Toy Story 4	CC Open Captioning
1:00 pm	PG	Maleficent: Mistress of Evil	
3:15 pm	PG	Frozen II	
5:30 pm	PG	Frozen II	3D
8:15 pm	PG	Frozen II	3D
10:30 pm	PG-13	Star Wars: The Rise of Skywalker	

Subject to change.



MORE TO ENJOY ONBOARD



NEW SPRING 2020 ITINERARIES

New Spring 2020 Itineraries announced! Experience sailings to the Caribbean, the Bahamas, Mexico, and Hawaii with your family! And for the very first time, sail from New Orleans to the Caribbean or Bahamas on Disney Wonder. Visit Disney Vacation Planning, Deck 4, Midship for more information. Disney Vacation Planning tends to get busy on the last day of sailing. Don't miss the opportunity to plan your next Disney vacation.



DISNEY VACATION CLUB® GROUP PREVIEW

Join us for our interactive group presentation to learn about taking magical vacations year after year! For more information, please see a Disney Vacation Club Cast Member on Deck 4, Midship, or call 7-2805 from your stateroom phone.

RELIGIOUS SERVICES

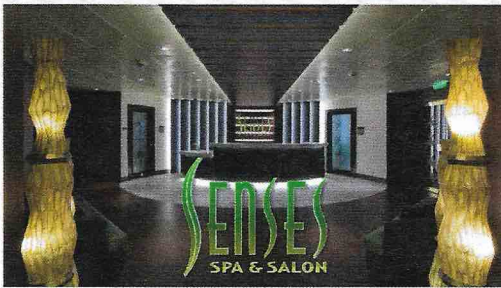
Groups who need a location to practice their faith may contact Guest Services for availability information.

Connect@Sea

FREE INTERNET EMBARKATION DAY SPECIAL

Sign up for a free 50 MB Internet package today and enjoy it throughout the cruise! This offer is only available from noon to midnight on the day your cruise begins. On your wireless device, simply find the "DCL-Guest" Wi-Fi Network, go to www.dclguest.com to create an account, and get your free 50 MB of data to start sharing your memories even before you leave port! If you have any questions, ask our Connect@Sea Expert located at Deck 3, Aft. No purchase necessary. The free 50 MB package can only be used for the duration of the cruise. Only one free package per stateroom, but everyone can share it. Unused data from a package will not be reimbursed and it is non-transferable between voyages or ships.

SENSES SPA & SALON



DECK 9, FORWARD
Extension 7-1465

RAINFOREST

Come enjoy our serenity lounge, with heated chairs, dry sauna, aromatherapy steam rooms and rainfall, misting showers. 5 Day Pass: Couples \$159 Single \$89

REJUVENATION SPA CONSULTATIONS

Ready to enhance your natural beauty? Book your free Facial Rejuvenation consultation with our Rejuvenation Doctor at the Senses Spa.

ONBOARD ACUPUNCTURE

Acupuncture is a safe and effective medicine that allows your body to heal itself, and is effective for various health conditions. See your onboard Acupuncturist for your free consultation.

IONITHERMIE

Lose between 1 – 8 inches. Speed up your metabolism. Firm muscle tone. Improve appearance of cellulite. \$149/1 session or \$299/3 sessions.

BIOTEC FACIALS

Our revolutionary facials address skin tone, blemishes and fine lines to transform the texture of the skin. The ultrasonic peel, massage and light therapy deliver a complexion that has never been smoother.

AN 18% AUTO GRATUITY IS ADDED TO ALL SENSES SPA SERVICES.

MERCHANDISE SHOPPING



DECK 4, FORWARD

HELPFUL SHOPPING TIP

While shopping onboard, you may collect your items from both stores before proceeding to checkout at any register. No need to have to wait in line in each store to pay for your items separately! Mickey's Mainsail and White Caps, Deck 4, Forward.

EFFY JEWELRY SPECIAL OFFER

The stylish Effy jewelry pieces are designed to allow you the opportunity to mix and match to create a look that's all your own. Receive a complimentary Effy scarf and jewelry pouch with each Effy jewelry purchase. While supplies last. White Caps, Deck 4, Forward.

BIBBIDI BOBBIDI BOUTIQUE

A makeover fit for a princess! Fairy Godmothers-in-Training are ready with magic and pixie dust to give your Prince and Princess the transformation of a lifetime. Make your reservations by visiting Bibbidi Bobbidi Boutique, Deck 10, Forward, Port Side, or dialing extension 7-10878. Limited space available.

DISNEY PIN TRADING

Experience the fun of pin trading onboard! You can find everything you need from character lanyards to lanyard medallions. Then fill your lanyard with starter pins to keep and trade and find an entire collection of Disney and Disney Cruise Line pins to tell your Disney story. Mickey's Mainsail, Deck 4, Forward.

DUE TO PORT REGULATIONS, WHEN THE SHIP IS DOCKED, THE STORES WILL REMAIN CLOSED.

SHUTTERS PHOTO GALLERY



DECK 4, AFT

WELCOME ABOARD RAFFLE

View your embarkation photos after 6:00 pm and enter our raffle for a chance to win a 10 Digital Photo Package valued at \$149.95. Guest must be present to win at the 8pm drawing in the Shutters Gallery, Deck 4 Aft. Terms and conditions apply.

GET THE PICTURE!

Take home all your stateroom photos from this cruise on USB! Packages are per stateroom, terms and conditions apply. Visit the Shutters Gallery for more information.

PHOTO BOOK

Turn your vacation memories into an impressive personalized PhotoBook. Build daily. Your order must be complete by 10:00 pm on the last night of the cruise.

SHUTTERS PORTRAIT STUDIO

Book early with our Portrait Artist to secure your 30min session in the private studio for Wall Art worthy portraits. No sitting fee, Black and White only. Pirate costumes welcome!

PHOTOS ARE AVAILABLE TO VIEW ON THE GALLERY KIOSKS APPROXIMATELY FIVE HOURS AFTER BEING TAKEN. DUE TO PORT REGULATIONS, KIOSKS WILL NOT BE AVAILABLE TO USE WHILE DOCKED.

IMPORTANT INFORMATION

Security Notice/Unaccompanied Minor Ashore
All Guests (including children) who wish to disembark or embark the ship are required to present their Key to the World card at the gangway. A photo ID is also required for those Guests who are 18 years of age or older. Guests under the age of 18 are required to have a Parent, Guardian or other responsible adult complete the "Traveling with Minors" section of "My Online Check-In" prior to sailing or sign an authorization form at the Guest Services Desk if they wish to go ashore unaccompanied or with any adult from another stateroom.

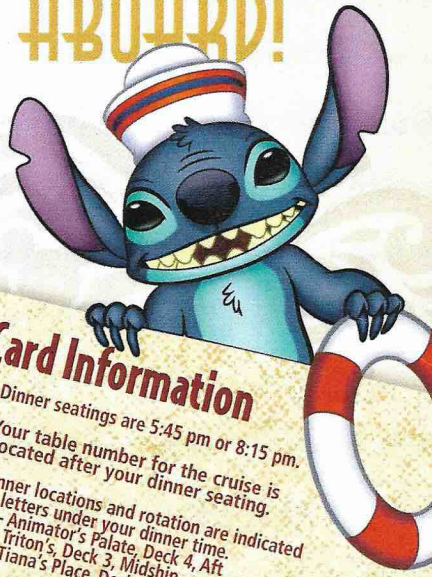
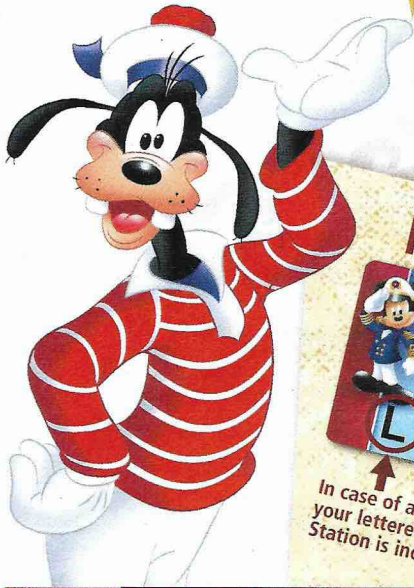
Inclement Weather
For the safety of all Guests, outdoor events may be changed due to unforeseen weather conditions.
Insect Repellent Advisory
The Centers for Disease Control and Prevention recommends wearing long-sleeved shirts and pants along with insect repellent to protect against mosquito bites and related illnesses when going ashore. Complimentary insect repellent is available on the pier as you exit the ship. Insect repellent is also available for purchase in White Caps. When using both sunscreen and insect repellent, use sunscreen first and apply insect repellent on top of sunscreen.

Corridor Quiet Hours
As a courtesy to all our Guests, please recognize quiet hallway hours from 10:00 pm til 8:00 am.
No Reserved Seats Policy
As a courtesy to all our Guests, we kindly advise that the saving of seats is not permitted in the Walt Disney Theatre, and the saving of the sun loungers is not permitted on Deck 9 and 10. Items left unattended will be returned to lost and found at Guest Services, Deck 3 Midship.
Cold and Flu Reminder
Please wash hands frequently and thoroughly, particularly before meals. Contact the Health Center by dialing 7-1927, should anyone in your party become ill.

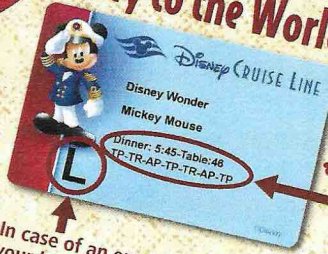
Smoking
For the comfort of our Guests, the following areas are designated as smoking areas:
*Deck 9, Forward, Port Side
*Deck 4, Starboard side from 6:00 pm to 6:00 am only (all of Deck 4 is non-smoking from 6:00 am to 6:00 pm)
Smoking is prohibited inside all Guest staterooms and on stateroom verandahs. Guests found smoking in their staterooms or on their verandahs will be charged a \$250 stateroom recovery fee. Electronic cigarettes may only be used in designated smoking areas.

Walt Disney Theatre
Theatrical performances may use artificial fog, strobe lights, pyrotechnics and other special effects. For the safety of our performers, and the comfort of those around you, the use of any photography, video recording device or any electronic equipment is prohibited.
Verandah Safety
Please do not leave any personal items on your verandah that may be blown overboard or present a fire hazard if left unattended. Do not throw anything over the ship's side. Guests should not sit, lean or climb on the railing or leave children unattended on the verandah. Do not open the verandah and stateroom doors simultaneously as this may create a wind effect and could cause the doors to slam unexpectedly.

WELCOME ABOARD!



Key to the World Card Information



In case of an emergency, your lettered Assembly Station is indicated here.

- Dinner seatings are 5:45 pm or 8:15 pm.
- Your table number for the cruise is located after your dinner seating.
- Dinner locations and rotation are indicated by letters under your dinner time.
 AP - Animator's Palate, Deck 4, Aft
 TR - Triton's, Deck 3, Midship
 TP - Tiana's Place, Deck 3, Aft



FAMILY DECK PARTY

Mickey's Sail-a-Wave Deck Party is a high energy, Disney Bounding, countdown celebration happening atop the Disney Wonder! Wave goodbye to work & school, and hello to vacation! Mickey and the gang throw a Sail-a-Wave celebration you won't forget!!
Deck 9 Stage, 4:45 pm

DRINK OF THE DAY
 Paradise Punch (Alcoholic)
 Espresso Chiller (Non-Alcoholic)

Afternoon	1:45	2:00	2:15	2:30	2:45	3:00	3:15	3:30	3:45	4:00	4:15	4:30	4:45	5:00	5:15	5:30	5:45	6:00	6:15	6:30	6:45	
FUNNEL VISION	Pixar Short Films (G) Funnel Vision												Mickey's Sail-A-Wave Party! Deck 9 Stage			Toy Story (G) Open Captioning Funnel Vision						
BUENA VISTA THEATRE																	Aladdin (2019) (PG) Duration: 2 Hours 8 Minutes					
CHARACTERS	Join the Lion Guard Disney's Oceaneer Club												Mickey's Sail-A-Wave Party! Deck 9 Stage	Mickey DK4 Mid (S) Pluto Lobby Atrium (P)			Minnie DK4 Mid (S) Chip & Dale Lobby Atrium (P)					
FUN FOR ALL AGES		Walking Ship Tour Préludes			Walking Ship Tour Préludes												Mostly Disney with Sean Flowers Lobby Atrium		Showtime: The Acapella Vocals of Edge Effect Walt Disney Theatre			
ADULTS		Smooth Sounds with Soul Duo Quiet Cove Pool			Spa Raffle Senses Spa & Salon											Cruisin' Solo Gathering Cove Café						
VIBE 14-17 YEARS OLD	Youth Activities Open House & Registration																					
EDGE 11-14 YEARS OLD	Youth Activities Open House & Registration																					
OCEANEER LAB 3-12 YEARS OLD	Youth Activities Open House & Registration Youth Activities Tour Open House																					
OCEANEER CLUB 3-12 YEARS OLD	Join the Lion Guard Youth Activities Open House & Registration																					

Mandatory Guest Assembly Drill 4:15 pm
 (All Guests must attend)

All ship services will be suspended during this time.

Refer to the posted drill instructions on the back of your stateroom door prior to heading to Deck 4. Please bring your Key to the World Card.

You will not need your life jacket for the Guest Assembly Drill.

Your Assembly Station is indicated on your Key To The World card.

Fold along the dotted lines and take me with you so you don't miss any of the fun!

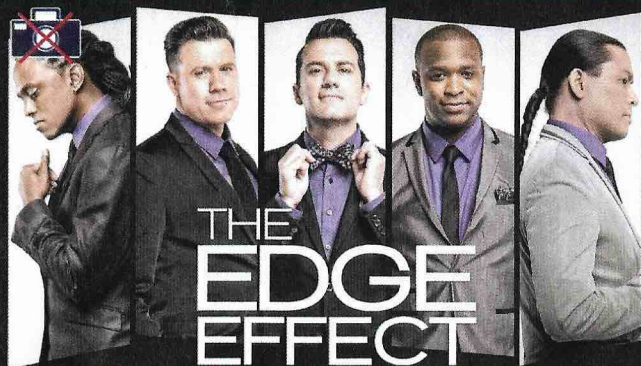


Evening	7:00	7:15	7:30	7:45	8:00	8:15	8:30	8:45	9:00	9:15	9:30	9:45	10:00	10:15	10:30	10:45	11:00	11:15	11:30	11:45	12:00		
FUNNEL VISION	Super Bowl 54: 49ers vs. Chiefs Funnel Vision (Subject to Satellite Availability)																						
BUENA VISTA THEATRE																	Aladdin (2019) (PG) Duration: 2 Hours 8 Minutes			The Lion King (2019) (PG) Open Captioning Duration: 1 Hour 58 Minutes			
CHARACTERS													Minnie DK4 Mid (S)			Mickey DK4 Mid (S)							
FUN FOR ALL AGES				Disney Tunes Trivia Azure									Goofy Lobby Atrium (P)			Pluto Lobby Atrium (P)							
				Disney Vacation Club Member Celebration D Lounge									Animation: Mickey Mouse D Lounge			Mickey Mania D Lounge						Family Superstar Karaoke D Lounge	
				Super Bowl 54: 49ers vs. Chiefs French Quarter Lounge (Subject to Satellite Availability)									Mellow Sounds with Soul Duo Lobby Atrium			Mixtape with Sean Flowers Lobby Atrium							
ADULTS				Super Bowl 54: 49ers vs. Chiefs Crown & Fin Pub (Subject to Satellite Availability)									Cruise Staff DJ Azure			Game Show: The Feud Azure						Awesome Mix Tape with Cruise Staff DJ Azure	
				Pop Goes the Bubbly Cadillac Lounge									Broadway and Movies with Sean Flowers Cadillac Lounge			1820 Society: Game Challenge Azure						Snippets Azure	
VIBE 14-17 YEARS OLD	Four Square	Game Challenge			Karaoke								Profiles			Ice Breakers						The Download	
EDGE 11-14 YEARS OLD	Wii Challenge	GAGA Ball			Rockband Challenge								Cards Tournament			Taking it to The Edge						Ice Breakers	
OCEANEER LAB 3-12 YEARS OLD	Ice Breakers		Piston Cup Challenge			Craft Corner		Elephant Soccer					Stitch's Space Goo			Bingo						GAGA Ball	
OCEANEER CLUB 3-12 YEARS OLD	Super Bowl Crafts			Human Bingo			Scavenger Hunt						Dress Up Fun			Once Upon a Time						Hula Hoop Jam	
																						Youth Activities Open House	

FOLD

ASL - AMERICAN SIGN LANGUAGE INTERPRETED

YOUTH ACTIVITIES OPEN HOUSE
 A non-secured program with activities for families, adults and children to enjoy together.



THE EDGE EFFECT

WALT DISNEY THEATRE

Deck 4, Forward
6:15 pm & 8:30 pm

As a courtesy to all Guests, we kindly advise that the saving of seats is **not** permitted in the Walt Disney Theatre.

Assistance is available at the entrance to the Walt Disney Theatre 30 minutes prior to show time.

Character Experience Reservations

Port Adventures Desk, Deck 3, Midship - 12:00 pm - 2:00 pm

The following appearances require a reservation. Space is limited. For Guests who did not book online, a limited number of reservations are available for:

- Princess Gathering
- Frozen Gathering

Character Appearances

JOIN THE LION GUARD

Disney's Oceaneer Club
1:45 pm

CHIP & DALE

Lobby Atrium (P) - 6:00 pm

GOOFY

Lobby Atrium (P) - 9:45 pm

MICKEY'S SAIL-A-WAVE PARTY!

Deck 9 Stage - 4:45 pm

MICKEY MOUSE

DK4 Mid (S)
5:30 pm & 10:00 pm

MINNIE MOUSE

DK4 Mid (S)
6:00 pm & 9:30 pm

PLUTO

Lobby Atrium (P)
5:30 pm & 10:15 pm



(S) Starboard Side - (P) Port Side

For details of daily Disney character appearances, refer to the Disney Cruise Line App, character line on the Navigator Grid, or the digital character board in the Lobby Atrium.

Lines close 15 minutes after advertised start time.

SHIP DIRECTORY

YOUTH ACTIVITIES

DISNEY'S OCEANEER CLUB	DECK 5, MID	12:00 PM - 3:45 PM 4:45 PM - 12:00 AM
DISNEY'S OCEANEER LAB	DECK 5, MID	12:00 PM - 3:45 PM 4:45 PM - 12:00 AM
EDGE	DECK 9, MID	12:00 PM - 3:45 PM 4:45 PM - 12:00 AM
IT'S A SMALL WORLD NURSERY!	DECK 5, AFT	12:00 PM - 3:45 PM 4:45 PM - 11:00 PM
VIBE	DECK 10, MID	12:00 PM - 3:45 PM 4:45 PM - 12:00 AM

POOLS

Children under 12 years of age must have adult supervision in all pools.

AQUALAB	DECK 9, AFT	12:00 PM - 3:45 PM 4:45 PM - 10:00 PM
DORY'S REEF	DECK 9, AFT	12:00 PM - 3:45 PM 4:45 PM - 8:00 PM
GOOFY'S POOL	DECK 9, MID	12:00 PM - 3:45 PM
QUIET COVE POOL (18+)	DECK 9, FWD	12:00 PM - 3:30 PM 4:30 PM - 11:00 PM
TWIST N' SPOUT	DECK 9, AFT	12:00 PM - 3:30 PM 4:30 PM - 8:00 PM

Please note, "selfie sticks" are not permitted in any aquatic area. Complimentary pool vests are available for children to use in the pools onboard. They are located on the pool deck.

RECREATION

CHILL SPA	DECK 9, FWD	12:00 PM - 10:00 PM
PORT ADVENTURES DESK	DECK 3, MID	12:00 PM - 3:45 PM 5:00 PM - 6:00 PM 7:00 PM - 8:30 PM
SENSES FITNESS CENTER (18+)	DECK 9, FWD	12:00 PM - 10:00 PM
WIDE WORLD OF SPORTS DECK	DECK 10, FWD	12:00 PM - 3:30 PM 4:30 PM - 11:59 PM

GENERAL INFORMATION

BUENA VISTA THEATRE	DECK 5, AFT	SHOWTIMES
CONNECT@SEA DESK	DECK 3, MID	1:00 PM - 4:00 PM 6:00 PM - 9:00 PM
DISNEY VACATION CLUB DESK	DECK 4, MID	5:00 PM - 10:00 PM
DISNEY VACATION PLANNING DESK	DECK 4, MID	7:30 PM - 8:30 PM
FUNNEL VISION	DECK 9, MID	SHOWTIMES
GUEST SERVICES	DECK 3, MID	24 HOURS
MEDICAL HEALTH CENTER	DECK 1, FWD	4:30 PM - 7:00 PM
PRELUDES	DECK 4, FWD	SHOWTIMES
SENSES SPA AND SALON	DECK 9, FWD	12:00 PM - 10:00 PM
SHUTTERS PHOTO GALLERY	DECK 4, AFT	6:00 PM - 10:30 PM
WALT DISNEY THEATRE	DECK 4, FWD	SHOWTIMES

SHOPPING

ART GALLERY	DECK 4, MID	
BIBBIDI BOBBIDI BOUTIQUE	DECK 10, FWD	12:00 PM - 3:00 PM 5:00 PM - 9:00 PM
MICKEY'S MAINSAIL	DECK 4, FWD	7:15 PM - 11:00 PM
SEA TREASURES	DECK 3, FWD	7:30 PM - 10:30 PM
WHITE CAPS	DECK 4, FWD	7:15 PM - 11:00 PM



TIME ZONE CHANGE

Remember to turn your clocks **BACK 1 HOUR** upon retiring on **SUNDAY** evening, or first thing **MONDAY** morning.

EVENING ATTIRE Cruise Casual

DINING & LOUNGES

LUNCH

CABANAS	DECK 9, AFT	12:00 PM - 3:00 PM
DAISY'S DE-LITES	DECK 9, AFT	12:00 PM - 3:30 PM 4:15 PM - 6:00 PM
PINOCCHIO'S PIZZERIA	DECK 9, MID	12:00 PM - 3:30 PM 4:15 PM - 6:00 PM
PETE'S BOILER BITES	DECK 9, AFT	12:00 PM - 3:30 PM 4:15 PM - 6:00 PM
TRITON'S (À-LA CARTE)	DECK 3, MID	11:45 AM - 1:30 PM

DINNER

ANIMATOR'S PALATE	DECK 4, AFT	5:45 PM & 8:15 PM
PALO (18+)	DECK 10, AFT	6:00 PM - 8:30 PM
PETE'S BOILER BITES	DECK 9, AFT	6:00 PM - 10:30 PM
PINOCCHIO'S PIZZERIA	DECK 9, MID	6:00 PM - 9:30 PM
TIANA'S PLACE	DECK 3, AFT	5:45 PM & 8:15 PM
TRITON'S	DECK 3, MID	5:45 PM & 8:15 PM

LATE NIGHT SNACKS

CROWN & FIN PUB (18+ AFTER 6:00 PM)	DECK 3, FWD	10:30 PM - 11:30 PM
PINOCCHIO'S PIZZERIA	DECK 9, MID	9:30 PM - 12:00 AM

ADDED FEATURES

BEVERAGE STATION	DECK 9, AFT, PORT SIDE	24 HOURS
EYE SCREAM	DECK 9, MID	12:00 PM - 3:30 PM 4:15 PM - 11:00 PM
ROOM SERVICE	DIAL 4330	OPENS AT 1:30 PM

ENTERTAINMENT - LOUNGES - BARS

Adults must be 21 and older to consume alcoholic beverages.

AZURE (18+ AFTER 9:00 PM)	DECK 3, FWD	9:30 PM - 1:00 AM
CADILLAC LOUNGE (18+)	DECK 3, FWD	5:30 PM - 12:00 AM
COVE CAFE (18+)	DECK 9, MID	11:45 AM - 12:00 AM
CROWN & FIN PUB (18+ AFTER 6:00 PM)	DECK 3, FWD	12:00 PM - 12:00 AM
D LOUNGE	DECK 4, MID	SHOWTIMES
FRENCH QUARTER LOUNGE	DECK 3, AFT	11:45 AM - 12:00 AM
PINOCCHIO'S PIZZERIA	DECK 9, MID	11:45 AM - 12:00 AM
PRELUDES	DECK 4, FWD	SHOWTIMES
SIGNALS (18+)	DECK 9, FWD	11:45 AM - 11:00 PM
SULLY'S SIPS	DECK 9, MID	11:45 AM - 5:30 PM

Public Health Advisory: Consuming raw or under-cooked meats, poultry, seafood, shellfish, or eggs may increase your risk for food borne illness, especially if you have certain medical conditions.



Explore and more with our carefully selected Port Adventures. Visit the Port Adventures Desk, Deck 3, Midship to find out more.

IMPORTANT NUMBERS

Fire/Security:	7-3001
Medical EMERGENCY:	7-3000
Health Center:	7-1927