

VOYAGE NAVIGATOR

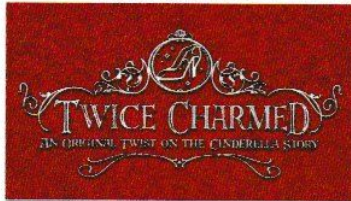
MONDAY
JANUARY 27, 2020

TO

FRIDAY
JANUARY 31, 2020

CRUISE HIGHLIGHTS

MONDAY
MIAMI, FLORIDA
Port Departure: 5:00 pm
All Aboard: 4:00 pm
Attire: Cruise Casual



TWICE CHARMED
Walt Disney Theatre
6:15 pm & 8:30 pm

TUESDAY
DAY AT SEA
Attire: Cruise Casual



JOURNEY INTO THE MYSTIC ARTS WITH DOCTOR STRANGE
Walt Disney Theatre
3:00 pm, 4:15 pm & 6:15 pm

WEDNESDAY
KEY WEST, FLORIDA
All Ashore: 8:30 am
All Aboard: 4:15 pm
Attire: Optional Dress Up



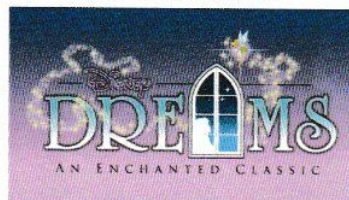
TANGLED: THE MUSICAL
Walt Disney Theatre
6:15 pm & 8:30 pm

THURSDAY
DISNEY CASTAWAY CAY
All Ashore: 8:30 am
All Aboard: 4:45 pm
Attire: Pirate or Cruise Casual



SHOWTIME: MAX WINFREY
Walt Disney Theatre
6:15 pm & 8:30 pm

FRIDAY
NASSAU, BAHAMAS
All Ashore: 8:30 am
All Aboard: 5:15 pm
Attire: Cruise Casual



DISNEY DREAMS: AN ENCHANTED CLASSIC
Walt Disney Theatre
6:15 pm & 8:30 pm

Subject to change.

WELCOME ABOARD!

YOUR STATEROOM & LUGGAGE

Staterooms will be ready at 1:30 pm. To allow your Stateroom Host/ess time to prepare your room, please do not remove the blue stanchion straps. Stateroom hosts will deliver luggage throughout the day until 5:30 pm.

STATEROOMS WITH BUNK BEDS

Bunk beds are recessed into the ceiling and will be prepared during evening turndown service by your Stateroom Host/ess.

STATEROOM SAFE

Each stateroom is equipped with a secured storage safe. Instructions for use are located on the safe.

TO CHANGE DINING ASSIGNMENT

Requests for different seating times will be taken today:

• 12:30 pm - 3:00 pm; Book in Fathoms, Deck 3, Forward, or please dial 7-1831 and leave a voicemail.

PALO DINING RESERVATIONS

Reservations are required and will be taken on a first come basis today:

• 12:30 pm - 3:00 pm; Book in Fathoms, Deck 3, Forward, or please dial 7-6843 and leave a voicemail.

Adult Exclusive Dining Opportunity! Guests are invited to make 2 dinner reservations at our adult-exclusive restaurant, Palo. This includes one reservation on embarkation evening and one more on another night of the cruise.

DINNER

5:45 pm - First seating 8:15 pm - Second seating

Please check your Key To The World Card for details of your dining rotation, and bring it to your specific dining location. There is no need to wait in line prior to dinner. Dining Rooms open at designated seating times and your table is reserved each night of your cruise.

A = Animator's Palate, Deck 4, Aft L = Lumière's, Deck 3, Midship R = Rapunzel's Royal Table, Deck 3, Aft

DOWNLOAD THE NEW
**DISNEY CRUISE LINE
NAVIGATOR APP**
BEFORE YOU SAIL AWAY

Available
on iOS
and
Android



Create the most memorable experiences during your Disney Cruise Line vacation with Port Adventures! Our Port Adventures are designed for you to see the best our ports have to offer. Stop by the Port Adventures Desk, Deck 3, Midship where our friendly team will be happy to assist you plan your adventure!
There is an adventure for everyone on your Disney Magic® vacation.



IMPORTANT NUMBERS Fire/Security: 7-3001 Medical Emergency: 7-3000 Health Center: 7-1927

ADULT ACTIVITY HIGHLIGHTS



1820 SOCIETY (GUESTS 18-20 YEARS ONLY)

1820 Society is an exclusive option for young adult Guests. Come meet fellow passengers and learn about the excellent activities that the Disney Magic offers to create the perfect cruise experience.



80'S FLASHBACK

The 80's are back! Join your Cruise Staff team, in testing your 80's knowledge in this high energy 80's revival.



ANYONE CAN COOK

Every Chef has a specialty, and ours is no exception. Get a taste of perfection with each recipe.



KRAZY KARAOKE

Take to the stage, grab a microphone and sing your favorite tunes with your Club Host and DJ.



MATCH YOUR MATE

It's time to play everyone's favorite couples game show, Match Your Mate!



SENSES SPA & SALON

Senses Spa & Salon has a variety of seminars and fitness classes available throughout the cruise. Pamper yourself with therapeutic spa treatments of heat, steam, rain and water in luxurious and tranquil private rooms. Deck 9, Forward.



PALO

Exquisite Italian cuisine, ocean views and rich décor creates a perfect setting for romantic dinners. Proper attire required, reservations and an additional fee applies. For more information or to make a reservation please dial 7-6843.

BEVERAGE SEMINARS

Your Beverage team has a host of tastings and seminars to entertain and educate you. Stop by Fathoms, Deck 3, Forward, 12:30 - 3:00 pm or Guest Services, Deck 3, Midship after today to pre-book these experiences (nominal fee applies).

- Stem to Stern Wine Tasting -
- Cognac Tasting - Whiskey Tasting -
- Tequila & Margarita Tasting -

FEATURED VARIETY ACTS THIS VOYAGE



THE PHYSICAL COMEDY OF MAX WINFREY

Fasten your seat belts and get ready for the outrageous Physical Comedy of Max Winfrey. His unique style of combining stunts and improvisational comedy has landed him numerous appearances on national television, most recently as a semi-finalist on America's Got Talent. Earlier this year, Max shattered the Guinness World Record for endurance juggling with full sized axes. Young and old alike will enjoy this unpredictable show that is filled with crazy audience participation.



THE JUMP ROPE STUNTS OF FLIGHT CREW

Members of Flight Crew have been featured in America's Got Talent, Cirque Dreams, America's Best Dance Crew and as World Jump Roping Champions! Not just a jump rope show, the amazing Flight Crew uses high energy stunts, LED ropes and dynamic choreography to present a show that leaps from the stage into your memories! Jumpin' FUN for the entire Family!

FUN FOR ALL AGES HIGHLIGHTS



A PIRATES LIFE FOR ME

Calling all Pirates, we be! If ye have an adventurous spirit or pirate savvy, come spin the "Wheel of Destiny" for a treasure trove of fun be ripe for the taking in this action packed pirate game show.



CASTAWAY CAY 5K: OVERVIEW & SIGN UP

Before your run, join us to pick up your Race Bib, receive an overview of the course, and more! Not signed up yet? The team can sign you up at the end of this overview presentation. Runners must be 10 years and older to participate.



CASTAWAY CAY 5K (10+)

On your marks, get set and meet on the island at the Bike Rentals (Pelican Point) to start your Fun Run. Bring your Key to the World Card and Photo ID required for Guests 18 years and older. Please note that runners must be 10 years of age or older to participate.



DISNEY VACATION CLUB GROUP PREVIEW

Join us for our interactive group presentation to learn about taking magical vacations year after year! For more information, please see a Disney Vacation Club Cast Member on Deck 4, Midship, or call 7-2805 from your stateroom phone.



JACKPOT BINGO

CASH prizes and raffle prizes to be won in our family friendly Bingo sessions with your Cruise Staff. Those under the age of 18 must be accompanied by an adult to play.



MICKEY'S SAIL-A-WAVE PARTY!

Mickey's Sail-A-Wave Party is a high energy, Disney Bound-ing, countdown celebration. Say goodbye to work and school and hello to vacation! Mickey and the gang throw a Sail-A-Wave celebration you won't forget!



PIRATES IN THE CARIBBEAN DECK PARTY

Yer Disney Friends are all set for a swashbucklin' good time! It's a Pirate Celebration, me hearties! Hoist yourself to Deck 9 to enjoy a rowdy buccaneer bash we call Pirates IN the Caribbean Deck Party. (Weather Permitting)



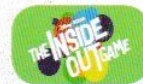
SO YOU THINK YOU KNOW YOUR FAMILY?

This fun-filled family game show is always full of surprises. Find out how well you know, or don't know your family!



SNUGGLY DUCKLING TAKEOVER

The Thugs have chosen O'Gills Pub as "their" new home. Join them for an offering of fun, games, and tomfoolery.



THE INSIDE OUT GAME

Make new memories using the memories you already have. Embrace joy and play against anger, fear & disgust in this one-of-a-kind game show based on the Pixar movie Inside Out!



WAKE UP WITH DISNEY JUNIOR

What happens when you experience unlimited fun with your favorite Disney Junior shows? You get an exciting dance party designed especially for preschoolers ages seven and under.



WHO WANTS TO BE A MOUSEKETEER?

Your chance to get into the "hot seat" and win limited edition prizes. Or, play along as part of our live studio audience.

YOUTH ACTIVITIES INFO & HIGHLIGHTS



Dine & Play

As a convenience for families dining at 8:15 pm, our Youth Activities Counselors will be available at 9:15 pm at the entrance of Lumiere's, and at 9:30 pm at the entrance of Animator's Palate and Rapunzel's Royal Table to bring registered children to join the fun in Disney's Oceaneer Club and Disney's Oceaneer Lab.

Youth Activities Open House

Open House is an opportunity for all to come and participate in a variety of exciting activities and free time in the Oceaneer Club, Oceaneer Lab, Edge and Vibe throughout the cruise. During these times secured programming will still be offered in the other venue for those looking to check their children into care.

Youth Activities Venue Tour

Come and take a tour of Disney's Oceaneer Club and Disney's Oceaneer Lab. This informative tour will give you the information you need to know about our exciting spaces and activities offered for children ages 3-12. Please see your Personal Navigator or the Navigator App for times.

Pre-Tween Fun (9-12 Year Olds)

This is a time reserved exclusively for ages 9-12 where children can participate in exciting activities just for them!

Toddler Time for Families

A time for Toddlers and their families to explore and play together.



3 - 12 years old

MICKEY'S PUZZLE PLAYTIME

Come and play with Mickey & friends as they share their favorite games, puzzles and dances!

DISNEY ROYAL ACADEMY

Hear ye! Hear ye! All boys and girls are invited to become part of the Oceaneer Royal Court. Learn all about your favorite Disney Prince and Princesses, create your own royal garb and become one of the most powerful in the land. Disney Royal Academy is in session!



3 - 12 years old

SUPER SLOPPY SCIENCE

Join Professor Make-O-Mess in some of the most extreme experiments you will ever see in the world of Super Sloppy Science!

PLUTO'S PAJAMA PARTY

Bring the little ones in their pajamas but there will be anything but sleep when Pluto and friends host the ultimate slumber party!



11 - 14 years old

HEROES VS. VILLAINS

Join your favorite hero or villain team on a series of activities that will take place throughout the cruise.

THAT'S HILARIOUS

Ever wanted to show off your comedy skills? Then be a part of the cast for the crazy improv show "That's Hilarious" and put on a live show for your friends.



14 - 17 years old

HAUNTED MANSION FAMILY PORTRAITS

Grim grinning ghosts come out to socialize as teens get transformed in a ghoulish photo shoot that is guaranteed to bring the spooks out for a swinging wake!

HOMECOMING

Come and join your fellow teens in our very own version of "Homecoming" and dance the night away.

BUENA VISTA THEATRE

Deck 5, Midship

FEATURE MOVIES THIS VOYAGE

MONDAY - MIAMI, FLORIDA

5:30 pm PG Maleficent: Mistress of Evil
8:15 pm PG Maleficent: Mistress of Evil

TUESDAY - DAY AT SEA

12:00 pm PG-13 Guardians of the Galaxy
2:30 pm PG-13 Guardians of the Galaxy Vol. 2
5:15 pm PG-13 Captain Marvel
8:00 pm PG-13 Captain Marvel
11:00 pm PG-13 Black Panther



WEDNESDAY - KEY WEST, FLORIDA

9:30 am PG Frozen II
11:45 am PG-13 Iron Man 3
2:30 pm PG Maleficent: Mistress of Evil
4:45 pm PG-13 Star Wars: The Rise of Skywalker
8:15 pm PG-13 Star Wars: The Rise of Skywalker
11:00 pm PG-13 Dr. Strange



THURSDAY - DISNEY CASTAWAY CAY

8:30 am PG Maleficent: Mistress of Evil
11:00 am PG-13 Avengers: Endgame
2:45 pm PG-13 Star Wars: The Rise of Skywalker
5:30 pm PG Frozen II
8:30 pm PG Frozen II
10:45 pm PG-13 Star Wars: The Rise of Skywalker



FRIDAY - NASSAU, BAHAMAS

8:30 am PG Frozen II
10:45 am PG-13 Star Wars: The Rise of Skywalker
1:45 pm PG-13 Thor: Ragnarok
4:45 pm PG-13 Star Wars: The Rise of Skywalker
8:15 pm PG-13 Star Wars: The Rise of Skywalker
11:00 pm PG Frozen II



Subject to change.



MORE TO ENJOY ONBOARD



NEW EARLY 2021 DISNEY CRUISE LINE ITINERARIES
New Early 2021 itineraries announced! Experience sailings to the Caribbean, The Bahamas or Mexico with your family. And returning for a limited time, tropical itineraries from New Orleans to the Caribbean or The Bahamas on the Disney Wonder. Visit Disney Vacation Planning, Deck 4, Midship for more information.



DISNEY VACATION CLUB® MEMBER CELEBRATION
Join us as we welcome you onboard with a fun, interactive event where you can catch the latest updates at Disney Vacation Club! Please see a Disney Vacation Club Cast Member on Deck 4, Midship or call 7-2805 from your stateroom phone for more information.



PORT SHOPPING INFORMATION
Meet Jolene, your Port Shopping Guide, for hints, tips and know how when it comes to shopping ashore this cruise! Jolene has great recommendations for the whole family and will show you how to maximize your time in our ports of call with money saving tips! Find Jolene van Ree around the Atrium, Deck 3, Midship on Embark Day to collect your FREE Ship Charm!

Connect@Sea

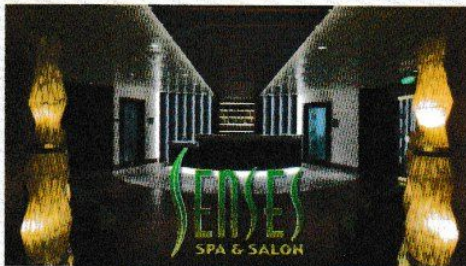
FREE INTERNET EMBARKATION DAY SPECIAL

Sign up for a free 50 MB Internet package today and enjoy it throughout the cruise! This offer is only available from noon to midnight on the day your cruise begins. On your wireless device, simply find the "DCL-Guest" Wi-Fi Network, go to www.dclguest.com to create an account, and get your free 50 MB of data to start sharing your memories even before you leave port! If you have any questions, ask our Connect@Sea Expert located at Deck 3, Aft. No purchase necessary. The free 50 MB package can only be used for the duration of the cruise. Only one free package per stateroom, but everyone can share it. Unused data from a package will not be reimbursed and it is non-transferable between voyages or ships.

RELIGIOUS SERVICES

Groups who need a location to practice their faith may contact Guest Services for availability information.

SENSES SPA & SALON



DECK 9, FORWARD
Extension 7-1465

RAINFOREST

Come enjoy our serenity lounge, with heated chairs, dry sauna, aromatherapy steam rooms and rainfall, misting showers.
Couples Cruise Pass - \$159 ~ Single Cruise Pass - \$89

IONITHERMIE

Lose between 1 – 8 inches? Speed up your metabolism. Firm muscle tone. Improve appearance of cellulite. \$149/1 session or \$299/3 sessions.

ONBOARD ACUPUNCTURE

Naturally effective for pain, arthritis, sea sickness, stress, digestion, weight loss, and much more.
\$169/session.

ELEMIS BIOTEC

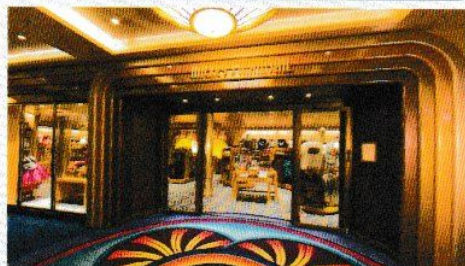
8 different Facial treatments available based on your specific concerns or needs. Technology turbo charges the concept of touch. The clinically proven result is visibly healthy, nourished and energized skin. Starting at \$169.

REJUVENATION SPA CONSULTATIONS

Ready to enhance your natural beauty? Book your free Facial Rejuvenation consultation with our Rejuvenation Doctor at the Senses Spa.

AN 18% AUTO GRATUITY IS ADDED TO ALL SENSES SPA SERVICES.

MERCHANDISE SHOPPING



DECK 4, FORWARD

THE CROWN JEWELRY

Visit The Crown Jewelry, located on Deck 4, Aft, to discover stylish timepieces and fine jewelry. Discover the Crown of Light Diamonds, Safi Kilima Tanzanites and John Hardy's handcrafted jewelry, as well as luxury watches by Hublot and Breitling.

MARVEL MERCHANDISE

Stop by Sea Treasures, Deck 3, Forward and discover exciting merchandise of some of your favorite Marvel Superheroes!

BIBBIDI BOBBIDI BOUTIQUE

A makeover fit for a princess! Fairy Godmothers-in-Training are ready with magic and pixie dust to give your Prince and Princess the transformation of a lifetime. Make your reservations by visiting Bibbidi Bobbidi Boutique, Deck 10, Forward, Port Side, or dialing extension 7-1492. Limited space available.

HELPFUL SHOPPING TIP

While shopping onboard, you may collect your items from both stores before proceeding to checkout at any register. No need to have to wait in line in each store to pay for your items separately! Mickey's Mainsail and White Caps, Deck 4, Forward.

SHUTTERS PHOTO GALLERY



DECK 4, AFT

WELCOME ABOARD

Welcome aboard! We hope we can help you make memories that will last a lifetime. Your photos will be available on our interactive kiosks for viewing. Ask any friendly photographer for help finding your photos, we will be happy to help you!

HOW TO LINK PHOTOS TO YOUR ACCOUNT

Please remember to give your room number when having your photos taken in order to get your photos linked to your account. Photos not linked to an account can be found on our kiosks.

BLACK AND WHITE PRIVATE STUDIO PORTRAITURE

Book our exclusive and contemporary Private Studio experience today, and capture elegant and timeless memories in a private and comfortable area. No seating fee, no obligation to purchase.

OUR CRUISE PHOTOS DIGITAL

Want to take home all of your fun memories from this magical vacation? Our easy and convenient USB package includes all of the photos from your stateroom. For more information please visit Shutters, Deck 4, Aft. Visit Shutters daily to check your photos.

PHOTOS WILL BE AVAILABLE FOR VIEWING ON OUR INTERACTIVE KIOSKS, PLEASE ASK A FRIENDLY PHOTOGRAPHER FOR HELP. VISIT SHUTTERS DAILY TO CHECK YOUR PHOTOS.

IMPORTANT INFORMATION

Security Notice/Unaccompanied Minor Ashore
All Guests (including children) who wish to disembark or embark the ship are required to present their Key to the World card at the gangway. A photo ID is also required for those Guests who are 18 years of age or older. Guests under the age of 18 are required to have a Parent, Guardian or other responsible adult complete the "Traveling with Minors" section of the "Online Check-In" prior to sailing or sign an authorization form at the Guest Services Desk if they wish to go ashore unaccompanied or with any adult from another stateroom.

Insect Repellent Advisory
The Centers for Disease Control and Prevention recommends wearing long-sleeved shirts and pants along with insect repellent to protect against mosquito bites and related illnesses when going ashore. Complimentary insect repellent is available on the pier as you exit the ship. Insect repellent is also available for purchase in White Caps. When using both sunscreen and insect repellent, use sunscreen first and apply insect repellent on top of sunscreen.

Corridor Quiet Hours
As a courtesy to all our Guests, please recognize quiet hallway hours from 10:00 pm til 8:00 am.

No Reserved Seats Policy
As a courtesy to all our Guests, we kindly advise that the saving of seats is not permitted in the Walt Disney Theatre, and the saving of the sun loungers is not permitted on Deck 9 and 10. Items left unattended will be returned to lost and found at Guest Services, Deck 3 Midship.

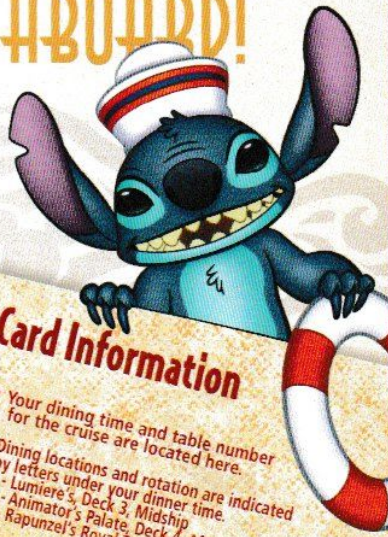
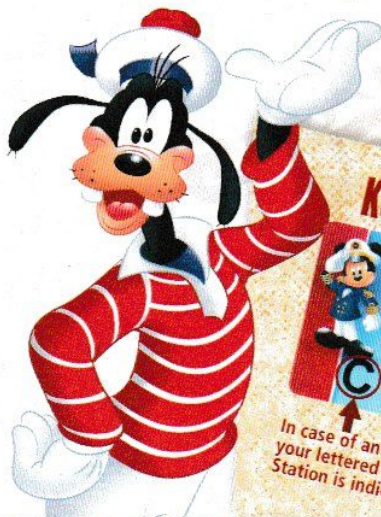
Cold and Flu Reminder
Please wash hands frequently and thoroughly, particularly before meals. Contact the Health Center by dialing 7-1927, should anyone in your party become ill.

Inclement Weather
For the safety of all Guests, outdoor events may be changed due to unforeseen weather conditions.

Smoking
For the comfort of our Guests, the following areas are designated as smoking areas:
*Deck 9, Forward, Port Side by 6:00 am only (all of Deck 4 is non-smoking from 6:00 am to 6:00 pm)
*Deck 4, Starboard side from 6:00 pm to 6:00 am only (all of Deck 4 is non-smoking from 6:00 am to 6:00 pm)
Smoking is prohibited inside all Guest staterooms and on stateroom verandahs. Guests found smoking in their staterooms or on their verandahs will be charged a \$250 stateroom recovery fee. Electronic cigarettes may only be used in designated smoking areas.

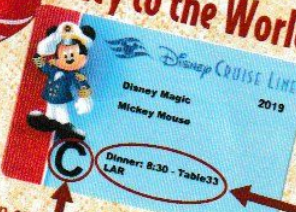
Walt Disney Theatre
Theatrical performances may use artificial fog, strobe lights, pyrotechnics and other special effects. For the safety of our performers and the comfort of those around you, the use of any photography, video recording device or any electronic equipment is prohibited.
Verandah Safety
Please do not leave any personal items on your verandah that may be blown overboard or present a fire hazard if left unattended. Do not throw anything over the ship's side. Guests should not sit, lean or climb on the railing or leave children unattended on the verandah. Do not open the verandah and stateroom doors simultaneously as this may create a wind effect and could cause the doors to slam unexpectedly.

WELCOME ABOARD!



Key to the World Card Information

In case of an emergency, your lettered Assembly Station is indicated here.



- Your dining time and table number for the cruise are located here.
- Dining locations and rotation are indicated by letters under your dinner time.
 - L - Lumiere's, Deck 3, Midship
 - A - Animator's Palate, Deck 4, Aft
 - R - Rapunzel's Royal Table, Deck 3, Aft

FAMILY DECK PARTY!

Mickey's Sail-A-Wave Deck Party is a high energy, Disney Bounding, countdown celebration happening atop the Disney Magic! Wave goodbye to work and school, and hello to vacation! Mickey and the gang throw a Sail-A-Wave celebration you won't forget!!

Deck 9 Stage, Midship, 4:30 pm

DRINK OF THE DAY
Captain's Mai Tai (Alcoholic)
Princess Delight (Non-Alcoholic)

Afternoon	1:45	2:00	2:15	2:30	2:45	3:00	3:15	3:30	3:45	4:00	4:15	4:30	4:45	5:00	5:15	5:30	5:45	6:00	6:15	6:30	6:45					
FUNNEL VISION	A Goofy Movie (G) Open Captioning Funnel Vision																									
BUENA VISTA THEATRE																					Mulan (G) Open Captioning Funnel Vision					
CHARACTERS																					Maleficent: Mistress of Evil (PG) Duration: 1 Hour 58 Minutes					
FUN FOR ALL AGES	Walking Ship Tour Preludes		Disney Cruise Line's Toddlerin' for Fun it's a small world nursery!																							
ADULTS	Spa Open House Senses Spa & Salon		Walk-in Acupuncture: Consultation Senses Spa & Salon		Spa Raffle Senses Spa																					
VIBE 14-17 YEARS OLD	Youth Activities Open House & Registration																				Open for Teens					
EDGE 11-14 YEARS OLD	Youth Activities Open House & Registration																				Open for Tweens					
OCEANEER LAB 3-12 YEARS OLD	Youth Activities Open House & Registration Youth Activities Tour																				Game Challenge					
OCEANEER CLUB 3-12 YEARS OLD	Youth Activities Open House & Registration Youth Activities Tour																				Meet Your Counselors					
	Youth Activities Open House & Registration																				Craft Corner					

Mandatory Guest Assembly Drill 4:00 pm
(All Guests must attend)

All ship services will be suspended during this time.

Refer to the posted drill instructions on the back of your stateroom door prior to heading to Deck 4. Please bring your Key to the World Card.

You will not need your life jacket for the Guest Assembly Drill.

Your Assembly Station is indicated on your Key To The World card.

Disney MAGIC

Evening	7:00	7:15	7:30	7:45	8:00	8:15	8:30	8:45	9:00	9:15	9:30	9:45	10:00	10:15	10:30	10:45	11:00	11:15	11:30	11:45	12:00					
FUNNEL VISION	Brave (PG) Open Captioning Funnel Vision		The Good Dinosaur (PG) Open Captioning Funnel Vision		Avengers: Age of Ultron (PG-13) Open Captioning Funnel Vision																					
BUENA VISTA THEATRE	Maleficent: Mistress of Evil (PG) Duration: 1 Hour 58 Minutes																									
CHARACTERS	Donald Minnie Daisy Mickey Lobby Atrium (P) Lobby Atrium (P) Lobby Atrium (P) DK4 Mid (S) Lobby Atrium (P)																									
FUN FOR ALL AGES	Who Wants to be a Mouseketeer? D Lounge		Twice Charmed Walt Disney Theatre		Who Wants to be a Mouseketeer? D Lounge		Disney Trivia Promenade Lounge		Family Dance Party Promenade Lounge																	
ADULTS	DVC Member Celebration Fathoms		Easy Listening Promenade Lounge		Cruise Staff DJ Fathoms		Majority Rules Fathoms		Match Your Mate Fathoms		Going Underground with Cruise Staff DJ Fathoms															
VIBE 14-17 YEARS OLD	Cards Tournament		Profiles		Your Pick: Board Game Challenge		Ice Breakers		Meet Your Counselors		Heroes and Villains															
EDGE 11-14 YEARS OLD	Wii Challenge		Craft Corner		Game Challenge		Ice Breakers		Meet Your Counselors		Profiles		Heroes and Villains													
OCEANEER LAB 3-12 YEARS OLD	Ice Breakers		Super Sloppy Science		GAGA Ball		Relay Games		Zootopia Mystery Trek		Wii Challenge															
OCEANEER CLUB 3-12 YEARS OLD	Meet Your Counselors		Toy Story Boot Camp		Go Fetch		Putting it Together		Ultimate Challenge		Wacky Relays		Craft Corner		Dance Party											

Fold along the dotted lines and take me with you so you don't miss any of the fun!

FOLD

YOUTH ACTIVITIES OPEN HOUSE
A non-secured program with activities for families, adults and children to enjoy together.

MONDAY, JANUARY 27, 2020 - MIAMI, FLORIDA



TWICE CHARMED

AN ORIGINAL TWIST ON THE CINDERELLA STORY

WALT DISNEY THEATRE

Deck 4, Forward
6:15 pm & 8:30 pm

As a courtesy to all Guests, we kindly advise that the saving of seats is **not** permitted in the Walt Disney Theatre.

Assistance is available at the entrance to the Walt Disney Theatre 30 minutes prior to show time.

Character Meet & Greet Ticket Distribution

Port Adventures Desk, Deck 3, Midship - 12:00 pm - 2:00 pm
The following appearances require a reservation. Space is limited.
For Guests who did not book online, a limited number of reservations are available for

- Princess Gathering
- Frozen Gathering

Character Appearances

DISNEY CRUISE LINE'S TODDLERIN' FOR FUN
it's a small world nursery!
2:30 pm

MICKEY'S SAIL-A-WAVE PARTY!
Deck 9 Stage - 4:30 pm

MICKEY MOUSE
DK4 Mid (S)
5:15 pm & 10:15 pm

MINNIE MOUSE
Lobby Atrium (P) - 5:15 pm
DK4 Mid (S) - 9:45 pm

CHIP & DALE
Preludes - 5:30 pm & 9:45 pm

PLUTO
DK5 Mid (S) - 5:30 pm

DONALD DUCK
Lobby Atrium (P)
5:45 pm & 9:30 pm

DAISY DUCK
Lobby Atrium (P) - 10:00 pm

GOOFY
Preludes - 10:15 pm



(S) Starboard Side - (P) Port Side

For detailed character appearances refer to the characters tab on the Disney Cruise Line App, or the digital character board in the Lobby Atrium.
Lines close 15 minutes after advertised start time.

SHIP DIRECTORY

YOUTH ACTIVITIES

DISNEY'S OCEANEER CLUB	DECK 5, MID	12:00 PM - 3:30 PM 4:30 PM - 12:00 AM
DISNEY'S OCEANEER LAB	DECK 5, MID	12:00 PM - 3:30 PM 4:30 PM - 12:00 AM
EDGE	DECK 9, MID	12:00 PM - 3:30 PM 4:30 PM - 12:00 AM
IT'S A SMALL WORLD NURSERY	DECK 5, AFT	12:00 PM - 3:30 PM 4:30 PM - 11:30 PM
VIBE	DECK 10, MID	12:00 PM - 3:30 PM 4:30 PM - 12:00 AM

POOLS

*Children under 12 years of age must have adult supervision in all pools.

AQUADUNK	DECK 10, MID	12:00 PM - 3:00 PM 6:00 PM - 8:00 PM
AQUALAB	DECK 9, AFT	12:00 PM - 3:30 PM 4:30 PM - 8:00 PM
GOOFY'S POOL	DECK 9, MID	12:00 PM - 3:15 PM 6:00 PM - 10:00 PM
NEPHEWS' SPLASH ZONE	DECK 9, AFT	12:00 PM - 3:30 PM 4:30 PM - 6:00 PM
QUIET COVE POOL (18+)	DECK 9, FWD	12:00 PM - 11:00 PM
TWIST 'N' SPOUT	DECK 9, AFT	12:00 PM - 3:00 PM 4:30 PM - 8:00 PM

Please note, "selfie sticks" are not permitted in any aquatic areas.
Complimentary pool vests are available for children to use in the pools onboard.
They are located on the pool deck.

RECREATION

PORT ADVENTURES DESK	DECK 3, MID	12:00 PM - 3:30 PM 4:30 PM - 8:00 PM 7:00 PM - 8:30 PM
SENSES FITNESS CENTER (18+)	DECK 9, FWD	11:30 AM - 10:00 PM
WIDE WORLD OF SPORTS DECK	DECK 10, FWD	24 HOURS

GENERAL INFORMATION

BUENA VISTA THEATRE	DECK 5, AFT	SHOWTIMES
CONNECT@SEA DESK	DECK 3, AFT	1:00 PM - 3:30 PM 7:00 PM - 9:30 PM
DISNEY VACATION CLUB DESK	DECK 4, MID	5:00 PM - 7:00 PM 8:30 PM - 10:00 PM
DISNEY VACATION PLANNING	DECK 4, MID	7:30 PM - 8:30 PM
FUNNEL VISION	DECK 9, MID	SHOWTIMES
GUEST SERVICES	DECK 3, MID	24 HOURS
MEDICAL HEALTH CENTER	DECK 1, FWD	4:30 PM - 7:00 PM
PRELUDES	DECK 4, FWD	SHOWTIMES
SENSES SPA AND SALON	DECK 9, FWD	11:30 AM - 10:00 PM
SHUTTERS PHOTO GALLERY	DECK 4, AFT	7:00 PM - 10:30 PM
WALT DISNEY THEATRE	DECK 4, FWD	SHOWTIMES

SHOPPING

PORT SHOPPING DESK	DECK 3, MID	4:30 PM - 6:00 PM 7:00 PM - 8:30 PM
BIBBIDI BOBBIDI BOUTIQUE	DECK 10, FWD	12:00 PM - 3:00 PM 5:00 PM - 9:00 PM
MICKEY'S MAINSAIL	DECK 4, FWD	6:00 PM - 11:00 PM
SEA TREASURES	DECK 3, FWD	6:00 PM - 11:00 PM
THE CROWN JEWELRY	DECK 4, AFT	6:00 PM - 11:00 PM
VISTA GALLERY	DECK 4, MID	
WHITE CAPS	DECK 4, FWD	6:00 PM - 11:00 PM

DUE TO PORT REGULATIONS, WHEN THE SHIP IS DOCKED, THE STORES MUST REMAIN CLOSED.

EVENING ATTIRE | Cruise Casual

DINING & LOUNGES

LUNCH

CABANAS	DECK 9, AFT	12:00 PM - 3:00 PM
DAISY'S DE LITES	DECK 9, AFT	12:00 PM - 3:30 PM 4:15 PM - 6:00 PM
DUCK-IN DINER	DECK 9, AFT	12:00 PM - 3:30 PM
LUMIERE'S	DECK 3, MID	12:00 PM - 2:00 PM
PINOCCHIO'S PIZZERIA	DECK 9, MID	12:00 PM - 3:30 PM 4:15 PM - 6:00 PM

DINNER

ANIMATOR'S PALATE	DECK 4, AFT	5:45 PM & 8:15 PM
DUCK-IN DINER	DECK 9, AFT	4:15 PM - 10:00 PM
LUMIERE'S	DECK 3, MID	5:45 PM & 8:15 PM
PALO (18+) (FOR RESERVATIONS CALL 7-8949)	DECK 10, AFT	6:00 PM - 8:30 PM
RAPUNZEL'S ROYAL TABLE	DECK 3, AFT	5:45 PM & 8:15 PM

LATE NIGHT SNACKS

O'GILLS PUB	DECK 3, FWD	10:45 PM - 11:30 PM
PINOCCHIO'S PIZZERIA	DECK 9, MID	9:30 PM - 12:00 AM
PROMENADE LOUNGE	DECK 3, AFT	10:45 PM - 11:30 PM

ADDED FEATURES

EYE SCREAM	DECK 9, AFT	12:00 PM - 3:30 PM 4:15 PM - 11:00 PM
BEVERAGE STATION	DECK 9, AFT	24 HOURS
ROOM SERVICE	DIAL 7-4330	24 HOURS

ENTERTAINMENT - LOUNGES - BARS

Adults must be 21 and older to consume alcoholic beverages.

AFTER HOURS	DECK 3, FWD	(AFTER 9:00 PM, ADULTS ONLY)
COVE CAFE (18+)	DECK 9, MID	11:45 AM - 12:00 AM
D LOUNGE	DECK 4, MID	SHOWTIMES
FATHOMS (18+ AFTER 9:00 PM)	DECK 3, FWD	9:30 PM - 1:00 AM
FROZONE TREATS	DECK 9, AFT	11:45 AM - 5:30 PM
KEYS (18+)	DECK 3, FWD	6:00 PM - 12:00 AM
O'GILLS PUB (18+ AFTER 9:00 PM)	DECK 3, FWD	11:45 AM - 12:00 AM
PINOCCHIO'S	DECK 9, MID	11:45 AM - 12:00 AM
PRELUDES	DECK 4, FWD	SHOWTIMES
PROMENADE LOUNGE	DECK 3, AFT	11:45 AM - 12:00 AM
SIGNALS (18+)	DECK 9, FWD	11:45 AM - 10:00 PM

Public Health Advisory: Consuming raw or undercooked meats, poultry, seafood, shellfish, or eggs may increase your risk for foodborne illness, especially if you have certain medical condition.



Explore and more with our carefully selected Port Adventures. Pass by the Port Adventures Desk, Deck 3, Midship to find out more.

IMPORTANT NUMBERS

Fire/Security: 7-3001
Medical EMERGENCY: 7-3000
Health Center: 7-1927