

VOYAGE NAVIGATOR

SUNDAY
JANUARY 19, 2020

TO

SATURDAY
JANUARY 25, 2020

CRUISE HIGHLIGHTS

SUNDAY

SAN JUAN, PUERTO RICO
Port Departure: 6:00 pm
All Aboard: 5:00 pm
Attire: Cruise Casual

The Magic & Music of
Kyle Knight & Mistie



SHOWTIME: KYLE KNIGHT & MISTIE
Walt Disney Theatre
6:15 pm & 8:30 pm

MONDAY

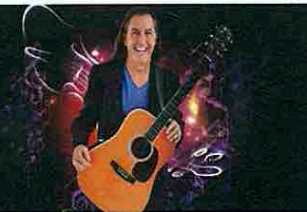
ST. JOHN'S, ANTIGUA
All Ashore: 9:30 am
All Aboard: 5:45 pm
Attire: Formal

THE
**GOLDEN
MICKEYS**

THE GOLDEN MICKEYS
Walt Disney Theatre
6:15 pm & 8:30 pm

TUESDAY

DAY AT SEA
Attire: Cruise Casual



SHOWTIME: JOHN CHARLES
Walt Disney Theatre
6:15 pm & 8:30 pm

WEDNESDAY

KRALENDIJK, BONAIRE
All Ashore: 8:30 am
All Aboard: 4:45 pm
Attire: Semi Formal



FROZEN, A MUSICAL SPECTACULAR
Walt Disney Theatre
6:00 pm & 8:30 pm

THURSDAY

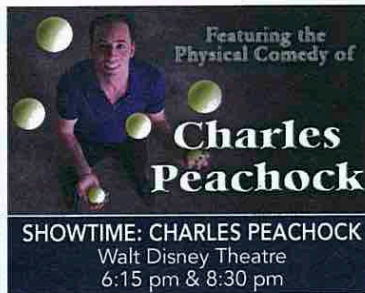
ORANJESTAD, ARUBA
All Ashore: 8:30 am
All Aboard: 11:45 pm
Attire: Cruise Casual



FROZEN II - (PG)
Walt Disney Theatre
5:30 pm & 8:15 pm

FRIDAY

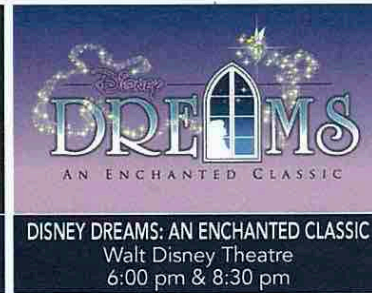
WILLEMSTAD, CURACAO
All Ashore: 8:30 am
All Aboard: 4:45 pm
Attire: Pirate or Cruise Casual



SHOWTIME: CHARLES PEACHOCK
Walt Disney Theatre
6:15 pm & 8:30 pm

SATURDAY

DAY AT SEA
Attire: Cruise Casual



DISNEY DREAMS: AN ENCHANTED CLASSIC
Walt Disney Theatre
6:00 pm & 8:30 pm

Subject to change.

WELCOME ABOARD!

YOUR STATEROOM & LUGGAGE

Staterooms will be ready at 1:30 pm. To allow your Stateroom Host/ess time to prepare your room, please do not remove the blue stanchion straps. Stateroom hosts will deliver luggage throughout the day until 5:30 pm.

STATEROOMS WITH BUNK BEDS

Bunk beds are recessed into the ceiling and will be prepared during evening turndown service by your Stateroom Host/ess.

STATEROOM SAFE

Each stateroom is equipped with a secured storage safe. Instructions for use are located on the safe.

TO CHANGE DINING ASSIGNMENT

Requests for different seating times will be taken today:

• 12:30 pm - 3:30 pm; Book in Azure, Deck 3, Forward or please dial 7-10891 and leave a voicemail.

PALO DINING RESERVATIONS

Reservations are required and will be taken on a first come basis today:

• 12:30 pm - 3:30 pm; Book in Azure, Deck 3, Forward or please dial 7-6843 and leave a voicemail.

Adult Exclusive Dining Opportunity! Guests are invited to make 2 dinner reservations at our adult-exclusive restaurant, Palo. This includes one reservation on embarkation evening and one more on another night of the cruise. Reservations are subject to availability and a specialty dining charge will apply.

DINNER

5:45 pm - First seating 8:15 pm - Second seating

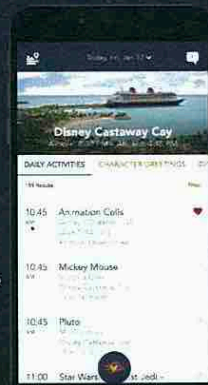
Please check your Key To The World Card for details of your dining rotation, and bring them to your specific dining location. There is no need to wait in line prior to dinner. Dining Rooms open at designated seating times and your table is reserved each night of your cruise.

AP = Animator's Palate, Deck 4, Aft TR = Triton's, Deck 3, Midship TP = Tiana's Place, Deck 3, Aft

DOWNLOAD THE DISNEY CRUISE LINE NAVIGATOR APP

BEFORE YOU SAIL AWAY

Explore all that's going on aboard your Disney cruise.



Tap the Disney Cruise Line logo to view your Personal Itinerary.

Send messages to your friends and family on the ship.

Your Personal Itinerary includes all activities booked at home and onboard.

Disney Cruise Line
PORT ADVENTURES

Create the most memorable experiences during your Disney Cruise Line vacation with Port Adventures! Our Port Adventures are designed for you to see the best our ports have to offer. Stop by the Port Adventures Desk, Deck 3, Midship where our friendly team will be happy to assist you plan your adventure!

There is an adventure for everyone on your Disney Wonder® vacation.

IMPORTANT NUMBERS Fire/Security: 7-3001 Medical Emergency: 7-3000 Health Center: 7-1927

ADULT ACTIVITY HIGHLIGHTS



1820 SOCIETY (GUESTS 18-20 YEARS ONLY)
1820 Society is an exclusive option for young adult Guests. Come meet fellow passengers and learn about the excellent activities that the Disney Wonder offers to create the perfect cruise experience.



ANYONE CAN COOK
Every Chef has a specialty, and ours is no exception. Get a taste of perfection with each recipe.

ART OF THE THEME SHOW TOUR

Join us for a guided tour highlighting the design, Imagineering and artistry of the ship. This tour is reserved for Guests 18 and over.



DISNEY AT SEA WITH D23

Join us for an exciting look at what's new and what's next from all of Disney's wonderful worlds! From theme parks and movies, to vision, music and beyond, you won't want to miss a minute of this new show presented by D23, Disney's official fan club.



KRAZY KARAOKE

Take to the stage, grab a microphone and sing your favorite tunes with your Club Host and DJ.



MATCH YOUR MATE

It's time to play everyone's favorite couples game show, Match Your Mate!



Senses Spa & Salon has a variety of seminars and fitness classes available throughout the cruise. Pamper yourself with therapeutic spa treatments of heat, steam, rain and water in luxurious and tranquil private rooms. Deck 9, Forward.

BEVERAGE SEMINARS

Your Beverage team has a host of tastings and seminars to entertain and educate you. Stop by Azuré, Deck 3, Forward to pre-book these experiences (nominal fee applies).

Mixology - Stem to Stern Wine Tasting - Martini Tasting - Champagne Tasting
Rum Tasting - Cognac Tasting - Whisky Tasting - Mojito & Caipirinha Tasting
Tequila & Margarita Tasting - Chocolate & Liquor Tasting - Bourbon Tasting

FEATURED VARIETY ACTS THIS VOYAGE



THE MAGIC & ILLUSION OF KYLE KNIGHT & MISTIE
Las Vegas illusionists Kyle and Mistie Knight have appeared on TV's "Fool Us" and "Now You See It," and were the grand-prize winners on the magician competition show "Wizard Wars." Together they perform their magic with a bold and modern style, and allow their audience to get up close and involved in ways they've never seen before.



THE MUSIC & COMEDY OF JOHN CHARLES
With just his guitar, and his incredible singing voice, John Charles amazes his audience with his ability to combine music, comedy and audience interaction. No two shows are ever alike!



THE PHYSICAL COMEDY OF CHARLES PEACHOCK
Charles Peachock is a Finalist from America's Got Talent, where he placed higher than any juggler in the show's history. Charles is a World Champion, and the only juggler to appear in People Magazine. Don't miss this one-of-a-kind hard-hitting entertainer.



THE VENTRILOQUISM & COMEDY OF LYNN TREFZGER
Lynn is a ventriloquist/comedienne with a trunk full of zany characters. Audiences are treated to Lynn's vocal illusion talents, when they may meet a lovable camel, a grumpy old man, a feisty little girl, and may even see some other audience members who are brought up for the action! Her off-the-wall audience interplay is tailored for both family and adult audiences.

FUN FOR ALL AGES HIGHLIGHTS



A PIRATES LIFE FOR ME

Calling all Pirates, we be! If ye have an adventurous spirit or pirate savvy, come spin the "Wheel of Destiny" for a treasure trove of fun be ripe for the takin' in this action packed pirate game show.



CLUB D DANCE PARTY

Join your Cruise Staff as we turn D Lounge into an electrifying family nightclub. Club D, where everyone is a VIP!



DISNEY MOVIE CHALLENGE POOLSIDE

So you like movies? And you like bingo? This deck party has them both! Come on out to watch all your favorite movie clips and just maybe your team will win the opportunity to choose the movie played by the pool today!



DISNEY VACATION CLUB GROUP PREVIEW

Join us for our interactive group presentation to learn about taking magical vacations year after year! For more information, please see a Disney Vacation Club Cast Member on Deck 4, Midship, or call 7-2805 from your stateroom phone.

GAME SHOW: THE FEUD

"Survey Says" you'll have a fantastic time with our version of a classic game.

GAME SHOW: THE WHEEL

A special version of this popular TV game show.



JACK-JACK'S INCREDIBLE DIAPER DASH

Calling all baby cruisers! It's time to take to the mat to see who's the fastest crawler of the seven seas! Register your baby 15 minutes prior to the big race.



JACKPOT BINGO

CASH prizes and raffle prizes to be won in our family friendly Bingo sessions with your Cruise Staff. Those under the age of 18 must be accompanied by an adult to play!



MAGIC WORKSHOP

You may have been fooled before but will now have the opportunity to learn how to trick your friends and family in this close up magic workshop with one of our Cruise Staff hosts.



MICKEY MANIA

Join us for the ultimate test of your Disney knowledge as we play our live, interactive game show, that's "insania!"



MICKEY'S SAIL-A-WAVE PARTY!

Mickey's Sail-a-Wave Deck Party is a high energy, Disney Bounding, countdown celebration happening atop the Disney Wonder! Wave goodbye to work & school, and hello to vacation! Mickey and the gang throw a Sail-a-Wave celebration you won't forget!!



PIRATES IN THE CARIBBEAN DECK PARTY

Yer Disney Friends are all set for a swashbucklin' good time! It's a Pirate Celebration, me hearties! Hoist yourself to Deck 9 to enjoy a rowdy buccaneer bash we call Pirates IN the Caribbean Deck Party.



SO YOU THINK YOU KNOW YOUR FAMILY?

This fun-filled family game show is always full of surprises. Find out how well you know, or don't know your family!



SPIRITS & SPIRITS GAME SHOW

The French Quarter comes to life with this mysterious game of choice and chance. It is up to you to challenge the Spirits to see if you have what it takes to win!



THE GOLDEN MICKEYS AFTER PARTY

Join your Cruise Staff for the awards celebration after party, featuring great dance music for the entire family.



WHO WANTS TO BE A MOUSEKETEER?

Your chance to get into the "hot seat" and win limited edition prizes. Or, play along as part of our live studio audience.

YOUTH ACTIVITIES INFO & HIGHLIGHTS



Dine & Play

As a convenience for families dining at 8:15 pm, our Youth Activities counselors will be available at the entrance of each restaurant to bring registered children to join the fun in the Youth Activities areas at the following times:

9:15 pm at the entrance of Triton's,

9:30 pm at the entrance of Tiana's Place and Animator's Palate.

Pre-School Fun

Disney's Oceaneer Club is reserved for only those between 3-5 years of age.

This is a time for them to become acclimated to Disney's Oceaneer Club, make new friends and join in on a lot of fun-filled programs and activities.

Please note after Pre-School Fun has concluded, Disney's Oceaneer Club will be open for Secured Programming for ages 3-12.

Youth Activities Open House

Open House is an opportunity for all to come and participate in a variety of exciting activities and free time in the Oceaneer Club, Oceaneer Lab, Edge and Vibe throughout the cruise. During these times secured programming will still be offered in the other venue for those looking to check their children into care.

Youth Activities Venue Tour

Come and take a tour of Disney's Oceaneer Club and Disney's Oceaneer Lab. This informative tour will give you the information you need to know about our exciting spaces and activities offered for children ages 3-12. Please see your Personal Navigator or the Navigator App for times.



3 - 12 years old

JOIN THE LION GUARD

Harness your inner animal and find out if you have what it takes to join the Lion Guard!

VAMPIRINA DANCELVANIA DANCE PARTY

Get ready to show off your own monstrous style and spine chilling dance moves with Vampirina in a spook-tacular Dancelvania Party!

FANCY IT YOURSELF WITH FANCY NANCY

Join the School de Fancy to practice your fanciness with the number one expert on the subject, Fancy Nancy.



3 - 12 years old

LAVA FLOW

Build your own volcano and watch it erupt as you learn about the physics of volcanoes.

MINNIE'S CAPTAIN ACADEMY

Minnie Mouse is looking for new recruits for her Captain Academy. Young Cruisers will test their nautical skills in various challenges and games as they learn what it takes to become an honorary captain.

PISTON CUP CHALLENGE

It's Dinoco time and you're part of the pit crew! Design your own race car and see if you've got what it takes to end up in the winner's circle!



11 - 14 years old

HEROES AND VILLAINS

Join your favorite hero or villain team on a series of activities that will take place throughout the cruise.

DESCENDANT'S DEN DJ SPIN OFF

Photo Booth! DJ lessons! Fun games! Sing! Laugh! Dance! It's the next generation of fun - Descendants style!



14 - 17 years old

GOTCHA

You will try to eliminate your victim by various methods collecting points throughout the day, last person standing with the most points wins.

THAT'S HILARIOUS

Ever wanted to show off your comedy skills? Then be a part of the cast for the crazy improv show "That's Hilarious" and put on a live show for your friends.

BUENA VISTA THEATRE

Deck 5, Aft

FEATURE MOVIES THIS VOYAGE

SUNDAY - SAN JUAN, PUERTO RICO

5:45 pm	PG	Aladdin (2019)
8:30 pm	PG	Aladdin (2019)
10:30 pm	PG	The Lion King (2019)



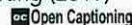
MONDAY - ST. JOHN'S, ANTIGUA

12:00 pm	PG	The Lion King (2019)
2:45 pm	PG	Aladdin (2019)
5:15 pm	PG	Maleficent: Mistress of Evil
8:15 pm	PG	Maleficent: Mistress of Evil
10:45 pm	G	Toy Story 4



TUESDAY - DAY AT SEA

8:30 am	PG	Family Movie Fun Time: The Lion King (2019)
12:45 pm	PG	Aladdin (2019)
3:15 pm	PG	The Lion King (2019)
5:45 pm	G	Toy Story 4
8:15 pm	G	Toy Story 4
10:45 pm	PG	Aladdin (2019)



WEDNESDAY - KRALENDIJK, BONAIRE

9:30 am	PG	Aladdin (2019)
12:15 pm	G	Toy Story 4
2:30 pm	PG-13	Star Wars: The Rise of Skywalker
5:30 pm	PG	The Lion King (2019)
8:15 pm	PG	The Lion King (2019)
10:45 pm	PG-13	Star Wars: The Rise of Skywalker



THURSDAY - ORANJESTAD, ARUBA

9:30 am	PG	The Lion King (2019)
12:00 pm	PG-13	Star Wars: The Rise of Skywalker
3:00 pm	G	Toy Story 4
5:30 pm	PG-13	Star Wars: The Rise of Skywalker
8:15 pm	PG-13	Star Wars: The Rise of Skywalker
11:00 pm	G	Toy Story 4



FRIDAY - WILLEMSTAD, CURACAO

10:00 am	PG	Aladdin (2019)
12:45 pm	PG	The Lion King (2019)
3:15 pm	PG	Frozen II
5:45 pm	G	Toy Story 4
8:15 pm	G	Toy Story 4
11:00 pm	PG	Frozen II



SATURDAY - DAY AT SEA

8:30 am	PG	Family Movie Fun Time: Frozen II
10:45 am	G	Toy Story 4
3:00 pm	PG	Frozen II
6:00 pm	PG	Frozen II
8:15 pm	PG	Frozen II
10:30 pm	PG-13	Star Wars: The Rise of Skywalker



Subject to change.

MORE TO ENJOY ONBOARD



NEW SPRING 2020 ITINERARIES

New Spring 2020 Itineraries announced! Experience sailings to the Caribbean, the Bahamas, Mexico, and Hawaii with your family! And for the very first time, sail from New Orleans to the Caribbean or Bahamas on Disney Wonder. Visit Disney Vacation Planning, Deck 4, Midship for more information. Disney Vacation Planning tends to get busy on the last day of sailing. Don't miss the opportunity to plan your next Disney vacation.

DISNEY VACATION CLUB® GROUP PREVIEW

Join us for our interactive group presentation to learn about taking magical vacations year after year! For more information, please see a Disney Vacation Club Cast Member on Deck 4, Midship, or call 7-2805 from your stateroom phone.

PORT SHOPPING INFORMATION

Come and meet Shannon, your Port Shopping Guide, at the Port Shopping Desk, Deck 3, Midship from 6:00 pm - 8:00 pm for a complimentary charm. Don't miss the Port Shopping Talk on Sea Day 1 in the Buena Vista Theatre, Deck 5, Aft, at 11:00 am for all of your Port Shopping information and to enter a raffle for a chance to win a Diamond Pendant. Tune into Channel 9 all cruise long for more Port Shopping information.



Connect@Sea

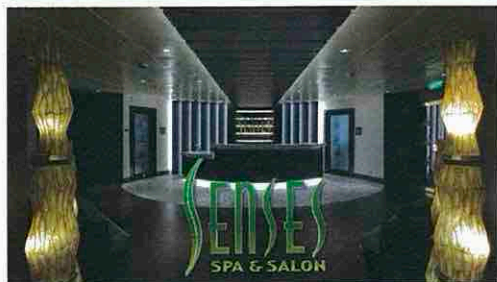
FREE INTERNET EMBARKATION DAY SPECIAL

Sign up for a free 50 MB Internet package today and enjoy it throughout the cruise! This offer is only available from noon to midnight on the day your cruise begins. On your wireless device, simply find the "DCL-Guest" Wi-Fi Network, go to www.dclguest.com to create an account, and get your free 50 MB of data to start sharing your memories even before you leave port! If you have any questions, ask our Connect@Sea Expert located at Deck 3, Aft. No purchase necessary. The free 50 MB package can only be used for the duration of the cruise. Only one free package per stateroom, but everyone can share it. Unused data from a package will not be reimbursed and it is non-transferable between voyages or ships.

RELIGIOUS SERVICES

Groups who need a location to practice their faith may contact Guest Services for availability information.

SENSES SPA & SALON



DECK 9, FORWARD
Extension 7-1465

RAINFOREST

Come enjoy our serenity lounge, with heated chairs, dry sauna, aromatherapy steam rooms and rainfall, misting showers. 7 Day Pass: Couples \$229 Single \$129

REJUVENATION SPA CONSULTATIONS

Ready to enhance your natural beauty? Book your free Facial Rejuvenation consultation with our Rejuvenation Doctor at the Senses Spa.

ONBOARD ACUPUNCTURE

Acupuncture is a safe and effective medicine that allows your body to heal itself, and is effective for various health conditions. See your onboard Acupuncturist for your free consultation.

IONITHERMIE

Lose between 1 - 8 inches. Speed up your metabolism. Firm muscle tone. Improve appearance of cellulite. \$149/1 session or \$299/3 sessions.

BIOTEC FACIALS

Our revolutionary facials address skin tone, blemishes and fine lines to transform the texture of the skin. The ultrasonic peel, massage and light therapy deliver a complexion that has never been smoother.

AN 18% AUTO GRATUITY IS ADDED TO ALL SENSES SPA SERVICES.

MERCHANDISE SHOPPING



DECK 4, FORWARD

HELPFUL SHOPPING TIP

While shopping onboard, you may collect your items from both stores before proceeding to checkout at any register. No need to have to wait in line in each store to pay for your items separately! Mickey's Mainsail and White Caps, Deck 4, Forward.

EFFY JEWELRY SPECIAL OFFER

The stylish Effy jewelry pieces are designed to allow you the opportunity to mix and match to create a look that's all your own. Receive a complimentary Effy scarf and jewelry pouch with each Effy jewelry purchase. While supplies last. White Caps, Deck 4, Forward.

BIBBIDI BOBBIDI BOUTIQUE

A makeover fit for a princess! Fairy Godmothers-in-Training are ready with magic and pixie dust to give your Prince and Princess the transformation of a lifetime. Make your reservations by visiting Bibbidi Bobbidi Boutique, Deck 10, Forward, Port Side, or dialing extension 7-10878. Limited space available.

DISNEY PIN TRADING

Experience the fun of pin trading onboard! You can find everything you need from character lanyards to lanyard medallions. Then fill your lanyard with starter pins to keep and trade and find an entire collection of Disney and Disney Cruise Line pins to tell your Disney story. Mickey's Mainsail, Deck 4, Forward.

DUE TO PORT REGULATIONS, WHEN THE SHIP IS DOCKED, THE STORES WILL REMAIN CLOSED.

SHUTTERS PHOTO GALLERY



DECK 4, AFT

WELCOME ABOARD RAFFLE

View your embarkation photos after 6:00 pm and enter our raffle for a chance to win a 10 Digital Photo Package valued at \$149.95. Guest must be present to win at the 8pm drawing in the Shutters Gallery, Deck 4 Aft. Terms and conditions apply.

GET THE PICTURE!

Take home all your stateroom photos from this cruise on USB! Packages are per stateroom, terms and conditions apply. Visit the Shutters Gallery for more information.

PHOTO BOOK

Turn your vacation memories into an impressive personalized PhotoBook. Build daily. Your order must be complete by 10:00 pm on the last night of the cruise.

SHUTTERS PORTRAIT STUDIO

Book early with our Portrait Artist to secure your 30min session in the private studio for Wall Art worthy portraits. No sitting fee, Black and White only. Pirate costumes welcome!

PHOTOS ARE AVAILABLE TO VIEW ON THE GALLERY KIOSKS APPROXIMATELY FIVE HOURS AFTER BEING TAKEN. DUE TO PORT REGULATIONS, KIOSKS WILL NOT BE AVAILABLE TO USE WHILE DOCKED.

IMPORTANT INFORMATION

Security Notice/

Unaccompanied Minor Ashore
All Guests (including children) who wish to disembark or embark the ship are required to present their Key to the World card at the gangway. A photo ID is also required for those Guests who are 18 years of age or older. Guests under the age of 18 are required to have a Parent, Guardian or other responsible adult complete the "Traveling with Minors" section of "My Online Check-In" prior to sailing or sign an authorization form at the Guest Services Desk if they wish to go ashore unaccompanied or with any adult from another stateroom.

Inclement Weather

For the safety of all Guests, outdoor events may be changed due to unforeseen weather conditions.
Insect Repellent Advisory
The Centers for Disease Control and Prevention recommends wearing long-sleeved shirts and pants along with insect repellent to protect against mosquito bites and related illnesses when going ashore. Complimentary insect repellent is available on the pier as you exit the ship. Insect repellent is also available for purchase in White Caps. When using both sunscreen and insect repellent, use sunscreen first and apply insect repellent on top of sunscreen.

Corridor Quiet Hours

As a courtesy to all our Guests, please recognize quiet hallway hours from 10:00 pm til 8:00 am.

No Reserved Seats Policy

As a courtesy to all our Guests, we kindly advise that the saving of seats is not permitted in the Walt Disney Theatre, and the saving of the sun loungers is not permitted on Deck 9 and 10. Items left unattended will be returned to lost and found at Guest Services, Deck 3 Midship.

Cold and Flu Reminder

Please wash hands frequently and thoroughly, particularly before meals. Contact the Health Center by dialing 7-1927, should anyone in your party become ill.

Smoking

For the comfort of our Guests, the following areas are designated as smoking areas:
*Deck 9, Forward, Port Side
*Deck 4, Starboard side from 6:00 pm to 6:00 am only (all of Deck 4 is non-smoking from 6:00 am to 6:00 pm)
Smoking is prohibited inside all Guest staterooms and on stateroom verandahs. Guests found smoking in their staterooms or on their verandahs will be charged a \$250 stateroom recovery fee. Electronic cigarettes may only be used in designated smoking areas.

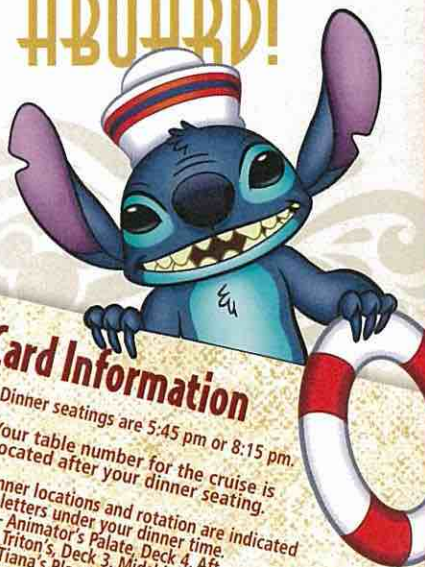
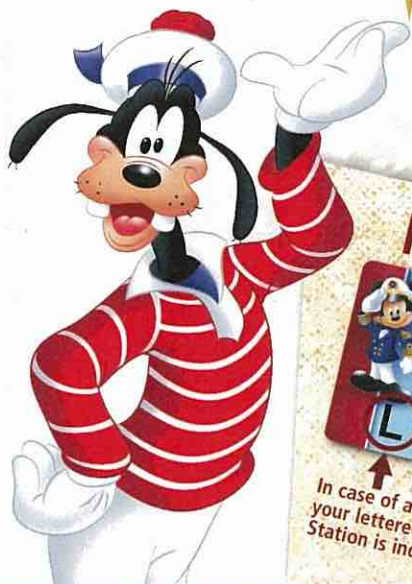
Walt Disney Theatre

Theatrical performances may use artificial fog, strobe lights, pyrotechnics and other special effects. For the safety of our performers, and the comfort of those around you, the use of any photography, video recording device or any electronic equipment is prohibited.

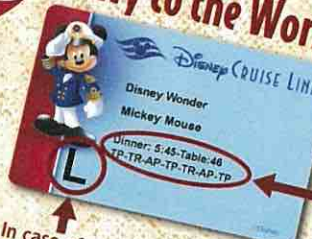
Verandah Safety

Please do not leave any personal items on your verandah that may be blown overboard or present a fire hazard if left unattended. Do not throw anything over the ship's side. Guests should not sit, lean or climb on the railing or leave children unattended on the verandah. Do not open the verandah and stateroom doors simultaneously as this may create a wind effect and could cause the doors to slam unexpectedly.

WELCOME ABOARD!



Key to the World Card Information



In case of an emergency, your lettered Assembly Station is indicated here.

- ♥ Dinner seatings are 5:45 pm or 8:15 pm.
- ♥ Your table number for the cruise is located after your dinner seating.
- ♥ Dinner locations and rotation are indicated by letters under your dinner time.
AP - Animator's Palate, Deck 4, Aft
TR - Triton's, Deck 3, Midship
TP - Tiana's Place, Deck 3, Aft

FAMILY DECK PARTY

Mickey's Sail-a-Wave Deck Party is a high energy, Disney Bounding, countdown celebration happening atop the Disney Wonder! Wave goodbye to work & school, and hello to vacation! Mickey and the gang throw a Sail-a-Wave celebration you won't forget!!
Deck 9 Stage, 4:45 pm

DRINK OF THE DAY
Paradise Punch (Alcoholic)
Bora Shake (Non-Alcoholic)

Afternoon	1:45	2:00	2:15	2:30	2:45	3:00	3:15	3:30	3:45	4:00	4:15	4:30	4:45	5:00	5:15	5:30	5:45	6:00	6:15	6:30	6:45				
FUNNEL VISION	Pixar Short Films (G) Funnel Vision					<div>Mandatory Guest Assembly Drill 4:15 pm (All Guests must attend)</div> <div>All ship services will be suspended during this time.</div> <div>Refer to the posted drill instructions on the back of your stateroom door prior to heading to Deck 4. Please bring your Key to the World Card.</div> <div>You will not need your life jacket for the Guest Assembly Drill.</div> <div></div> <div>Your Assembly Station is indicated on your Key To The World card.</div>								The Incredibles (PG) Open Captioning Funnel Vision					Aladdin (2019) (PG) Duration: 2 Hour 8 Minutes						
BUENA VISTA THEATRE	Join the Lion Guard Disney's Oceaneer Club													Mickey's Sail-A-Wave Party! Deck 9 Stage					Mickey DK4 Mid (S)		Minnie DK4 Mid (S)				
CHARACTERS																			Pluto Lobby Atrium (P)		Chip & Dale Lobby Atrium (P)				
FUN FOR ALL AGES	Walking Ship Tour Preludes					Walking Ship Tour Preludes					Cool Sounds with Soul Duo Lobby Atrium					Showtime: The Magic & Illusion of Kyle Knight & Mistie Walt Disney Theatre									
	Join the Lion Guard Disney's Oceaneer Club										New Orleans Jazz with MVP Duo French Quarter Lounge														
ADULTS	Spa Open House Senses Spa Fitness Center					Spa Raffle Senses Spa Fitness Center					Live Sports: NFL AFC Championship: Tennessee Titans vs. Kansas City Crown & Fin Pub (Subject to Satellite Availability) Starts at 4:00 pm														
											Cruisin' Solo Gathering Cove Café														
VIBE 14-17 YEARS OLD	Youth Activities Open House & Registration												Youth Activities Open House					Open for Teens					Four Square		
EDGE 11-14 YEARS OLD	Youth Activities Open House & Registration												Youth Activities Open House					Open for Tweens					Wii Challenge		
OCEANEER LAB 3-12 YEARS OLD	Youth Activities Open House & Registration					Youth Activities Tour		Open House			Open House		Meet Your Counselors			Four Square		Ice Breakers							
OCEANEER CLUB 3-12 YEARS OLD	Join the Lion Guard					Youth Activities Open House & Registration							Youth Activities Open House & Registration					Pre-School Fun (3-5 Years Old)							



Evening	7:00	7:15	7:30	7:45	8:00	8:15	8:30	8:45	9:00	9:15	9:30	9:45	10:00	10:15	10:30	10:45	11:00	11:15	11:30	11:45	12:00	
FUNNEL VISION						Big Hero 6 (PG) Open Captioning Funnel Vision								Cinderella (2015) (PG) Open Captioning Funnel Vision								
BUENA VISTA THEATRE						Aladdin (2019) (PG) Duration: 2 Hour 8 Minutes								The Lion King (2019) (PG) Duration: 1 Hour 58 Minutes								
CHARACTERS												Minnie DK4 Mid (S)		Mickey DK4 Mid (S)								
												Goofy Lobby Atrium (P)		Pluto Lobby Atrium (P)								
FUN FOR ALL AGES			Disney Tunes Trivia <i>Azure</i>				Showtime: The Magic & Illusion of Kyle Knight & Mistie <i>Walt Disney Theatre</i>					Animation: Mickey Mouse D Lounge		Mickey Mania D Lounge		Family Superstar Karaoke D Lounge						
			Disney Vacation Club Member Celebration D Lounge									Easy Listening with MVP Duo French Quarter Lounge					Swing Jazz French Quarter Lounge					
ADULTS						Live Sports: NFC Championship: Green Bay Packers vs. San Francisco 49ers Crown & Fin Pub (Subject to Satellite Availability)					Cruise Staff DJ <i>Azure</i>			Game Show: The Feud <i>Azure</i>		Snippets <i>Azure</i>		Awesome Mix Tape with Cruise Staff DJ <i>Azure</i>				
						Music and Martinis with Lavik Cadillac Lounge																
VIBE 14-17 YEARS OLD	Four Square	Game Challenge			Karaoke			Profiles			Ice Breakers			The Download			Heroes and Villains					
EDGE 11-14 YEARS OLD	Wii Challenge	GAGA Ball			Rockband Challenge			Profiles			Cards Tournament			Taking it to The Edge		Ice Breakers		Heroes and Villains				
OCEANEER LAB 3-12 YEARS OLD	Ice Breakers		Piston Cup Challenge			All About Me			Elephant Soccer			Stitch's Space Goo			Bingo		GAGA Ball		Dance Party			
OCEANEER CLUB 3-12 YEARS OLD			Meet Your Counselors			Space Ranger Training			Once Upon a Time			Game Challenge						Youth Activities Open House				

Fold along the dotted lines and take me with you so you don't miss any of the fun!

ASL - AMERICAN SIGN LANGUAGE INTERPRETED

YOUTH ACTIVITIES OPEN HOUSE
A non-secured program with activities for families, adults and children to enjoy together.

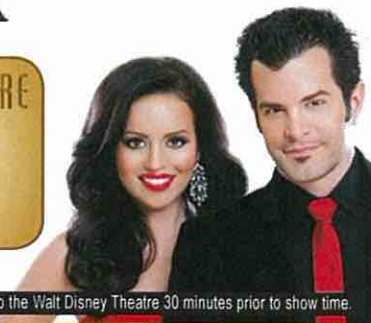
The Magic & Illusion of Kyle Knight & Mistie



WALT DISNEY THEATRE

Deck 4, Forward
6:15 pm & 8:30 pm

As a courtesy to all Guests,
we kindly advise that the saving of
seats is **not** permitted
in the Walt Disney Theatre.



Assistance is available at the entrance to the Walt Disney Theatre 30 minutes prior to show time.

Character Experience Reservations

Port Adventures Desk, Deck 3, Midship - 12:00 pm - 2:00 pm

The following appearances require a reservation.
Space is limited. For Guests who did not book online,
a limited number of reservations are available for:

- Princess Gathering
- Frozen Gathering
- VIP Character Breakfast

Character Appearances

JOIN THE LION GUARD

Disney's Oceaneer Club
1:45 pm

CHIP & DALE

Lobby Atrium (P) - 6:00 pm

MICKEY'S SAIL-A-WAVE PARTY!

Deck 9 Stage - 4:45 pm

GOOFY

Lobby Atrium (P) - 9:45 pm

MICKEY MOUSE

DK4 Mid (S)
5:30 pm & 10:00 pm

MINNIE MOUSE

DK4 Mid (S)
6:00 pm & 9:30 pm

PLUTO

Lobby Atrium (P)
5:30 pm & 10:15 pm



(S) Starboard Side - (P) Port Side

For details of daily Disney character appearances, refer to the
Disney Cruise Line App, character line on the Navigator Grid, or the digital
character board in the Lobby Atrium.

Lines close 15 minutes after advertised start time.

SHIP DIRECTORY

YOUTH ACTIVITIES

Disney's OCEANEER CLUB	DECK 5, MID	12:00 PM - 3:45 PM 4:45 PM - 12:00 AM
Disney's OCEANEER LAB	DECK 5, MID	12:00 PM - 3:45 PM 4:45 PM - 12:00 AM
EDGE	DECK 9, MID	12:00 PM - 3:45 PM 4:45 PM - 12:00 AM
IT'S A SMALL WORLD NURSERY!	DECK 5, AFT	12:00 PM - 3:45 PM 5:30 PM - 11:00 PM
VIBE	DECK 10, MID	12:00 PM - 3:45 PM 4:45 PM - 12:00 AM

POOLS

Children under 12 years of age must have adult supervision in all pools.

AQUALAB	DECK 9, AFT	12:00 PM - 3:45 PM 4:45 PM - 8:00 PM
DORY'S REEF	DECK 9, AFT	12:00 PM - 3:45 PM 4:45 PM - 8:00 PM
GOOFY'S POOL	DECK 9, MID	12:00 PM - 3:45 PM 6:30 PM - 10:00 PM
QUIET COVE POOL (18+)	DECK 9, FWD	12:00 PM - 3:45 PM 5:30 PM - 11:00 PM
TWIST N' SPOUT	DECK 9, AFT	12:00 PM - 3:30 PM 4:45 PM - 8:00 PM

Please note, "selfie sticks" are not permitted in any aquatic area.
Complimentary pool vests are available for children to use in the pools onboard.
They are located on the pool deck.

RECREATION

CHILL SPA	DECK 9, FWD	12:00 PM - 10:00 PM
PORT ADVENTURES DESK	DECK 3, MID	12:00 PM - 3:45 PM 5:00 PM - 6:00 PM 7:00 PM - 8:30 PM
SENSES FITNESS CENTER (18+)	DECK 9, FWD	12:00 PM - 10:00 PM
WIDE WORLD OF SPORTS DECK	DECK 10, FWD	12:00 PM - 3:45 PM 4:45 PM - 11:59 PM

GENERAL INFORMATION

BUENA VISTA THEATRE	DECK 5, AFT	SHOWTIMES
CONNECT@SEA DESK	DECK 3, MID	1:30 PM - 4:00 PM 6:00 PM - 9:00 PM
DISNEY VACATION CLUB DESK	DECK 4, MID	5:00 PM - 10:00 PM
DISNEY VACATION PLANNING DESK	DECK 4, MID	7:30 PM - 8:30 PM
FUNNEL VISION	DECK 9, MID	SHOWTIMES
GUEST SERVICES	DECK 3, MID	24 HOURS
MEDICAL HEALTH CENTER	DECK 1, FWD	4:30 PM - 7:00 PM
PRELUDES	DECK 4, FWD	SHOWTIMES
SENSES SPA AND SALON	DECK 9, FWD	12:00 PM - 10:00 PM
SHUTTERS PHOTO GALLERY	DECK 4, AFT	6:00 PM - 10:30 PM
WALT DISNEY THEATRE	DECK 4, FWD	SHOWTIMES

SHOPPING

ART GALLERY	DECK 4, MID	
BIBBIDI BOBBIDI BOUTIQUE	DECK 10, FWD	12:00 PM - 3:00 PM 5:00 PM - 9:00 PM
MICKEY'S MAINSAIL	DECK 4, FWD	6:45 PM - 11:00 PM
PORT SHOPPING DESK	DECK 3, MID	7:00 PM - 8:30 PM
SEA TREASURES	DECK 3, FWD	7:00 PM - 10:00 PM
WHITE CAPS	DECK 4, FWD	6:45 PM - 11:00 PM

EVENING ATTIRE Cruise Casual

DINING & LOUNGES

LUNCH

CABANAS	DECK 9, AFT	12:00 PM - 3:00 PM
DAISY'S DE-LITES	DECK 9, AFT	12:00 PM - 3:30 PM 4:30 PM - 6:00 PM
PINOCCHIO'S PIZZERIA	DECK 9, MID	12:00 PM - 3:30 PM 4:30 PM - 6:00 PM
PETE'S BOILER BITES	DECK 9, AFT	12:00 PM - 3:30 PM 4:30 PM - 6:00 PM
TRITON'S (À-LA CARTE)	DECK 3, MID	11:45 AM - 1:30 PM

DINNER

ANIMATOR'S PALATE	DECK 4, AFT	5:45 PM & 8:15 PM
PALO (18+)	DECK 10, AFT	6:00 PM - 8:30 PM
PETE'S BOILER BITES	DECK 9, AFT	6:00 PM - 9:30 PM
TIANA'S PLACE	DECK 3, AFT	5:45 PM & 8:15 PM
TRITON'S	DECK 3, MID	5:45 PM & 8:15 PM

LATE NIGHT SNACKS

CROWN & FIN PUB (18+ AFTER 9:00 PM)	DECK 3, FWD	10:30 PM - 11:30 PM
PINOCCHIO'S PIZZERIA	DECK 9, MID	10:30 PM - 11:30 PM

ADDED FEATURES

BEVERAGE STATION	DECK 9, AFT, PORT SIDE	24 HOURS
EYE SCREAM	DECK 9, MID	12:00 PM - 3:30 PM 4:30 PM - 11:00 PM
ROOM SERVICE	DIAL 4330	OPENS AT 1:30 PM

ENTERTAINMENT - LOUNGES - BARS

Adults must be 21 and older to consume alcoholic beverages.

AZURE (18+ AFTER 9:00 PM)	DECK 3, FWD	9:30 PM - 1:00 AM
CADILLAC LOUNGE (18+)	DECK 3, FWD	6:00 PM - 12:00 AM
COVE CAFE (18+)	DECK 9, MID	11:45 AM - 12:00 AM
CROWN & FIN PUB (18+ AFTER 9:00 PM)	DECK 3, FWD	11:45 AM - 12:00 AM
D LOUNGE	DECK 4, MID	SHOWTIMES
FRENCH QUARTER LOUNGE	DECK 3, AFT	11:45 AM - 12:00 AM
PINOCCHIO'S PIZZERIA	DECK 9, MID	11:45 AM - 12:00 AM
PRELUDES	DECK 4, FWD	SHOWTIMES
SIGNALS (18+)	DECK 9, FWD	11:45 AM - 10:30 PM
SULLEY'S SIPS	DECK 9, MID	11:45 AM - 5:30 PM

Public Health Advisory: Consuming raw or under-cooked meats, poultry, seafood, shellfish, or eggs may increase your risk for food borne illness, especially if you have certain medical conditions.

Disney CRUISE LINE. PORT ADVENTURES

Explore and more with our carefully selected
Port Adventures. Visit the Port Adventures Desk,
Deck 3, Midship to find out more.

IMPORTANT NUMBERS

Fire/Security: 7-3001
Medical EMERGENCY: 7-3000