

VOYAGE NAVIGATOR



MONDAY
NOVEMBER 25, 2019

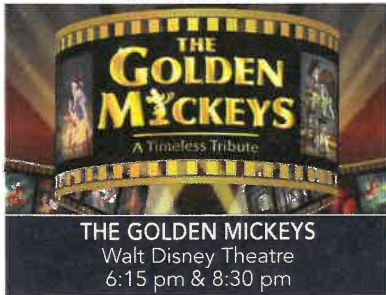
TO

THURSDAY
NOVEMBER 28, 2019

CRUISE HIGHLIGHTS

MONDAY

PORT CANAVERAL, FLORIDA
Port Departure: 5:00 pm
All Aboard: 3:45 pm
Attire: Cruise Casual



THE GOLDEN MICKEYS
Walt Disney Theatre
6:15 pm & 8:30 pm

TUESDAY

NASSAU, BAHAMAS
All Ashore: 9:30 am
All Aboard: 5:15 pm
Attire: Optional Dress Up



BEAUTY AND THE BEAST
Walt Disney Theatre
6:00 pm & 8:30 pm

WEDNESDAY

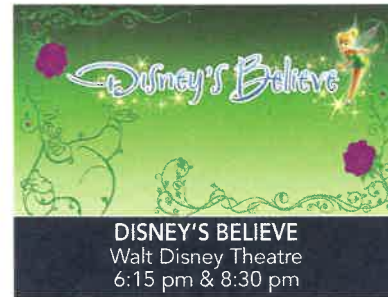
DISNEY CASTAWAY CAY
All Ashore: 8:30 am
All Aboard: 4:45 pm
Attire: Pirate or Cruise Casual



FROZEN II - (G)
Walt Disney Theatre
5:30 pm & 8:15 pm

THURSDAY

DAY AT SEA
Attire: Cruise Casual



DISNEY'S BELIEVE
Walt Disney Theatre
6:15 pm & 8:30 pm

Subject to change.

WELCOME ABOARD!

YOUR STATEROOM & LUGGAGE

Staterooms will be ready at 1:30 pm. To allow your Stateroom Host/ess time to prepare your room, please do not remove the blue stanchion straps. Stateroom hosts will deliver luggage throughout the day until 6:00 pm.

STATEROOMS WITH BUNK BEDS

Bunk beds are recessed into the ceiling and will be prepared during evening turndown service by your Stateroom Host/ess.

STATEROOM SAFE

Each stateroom is equipped with a secured storage safe. Instructions for use are located on the safe.

TO CHANGE DINING ASSIGNMENT

Requests for different seating times will be taken today:

12:30 pm - 3:00 pm; Book in Enchanted Garden, Deck 2 Mid
3:00 pm - 5:00 pm; please dial 7-1831, 7-1832, or 7-1833

REMY & PALO DINING RESERVATIONS

Reservations are required and will be taken on a first come basis today:

12:30 pm - 3:00 pm; Enchanted Garden, Deck 2 Mid

Please dial 7-9734 for Remy or 7-9735 for Palo for more information. Cover charge applicable.

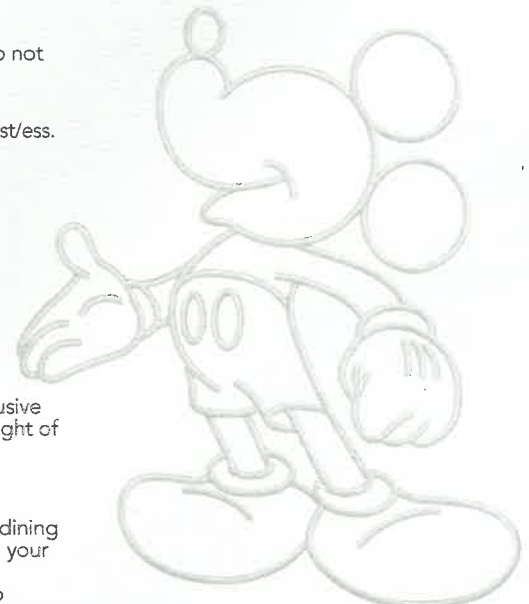
Adult Exclusive Dining Opportunity! Guests are invited to make 2 dinner reservations at our two adult-exclusive restaurants, Palo & Remy. This includes one reservation on embarkation evening and one more on another night of the cruise. Reservations are subject to availability and a specialty dining charge will apply.

DINNER

5:45 pm - First seating 8:15 pm - Second seating

Please check your Key To The World Card for details of your dining rotation, and bring them to your specific dining location. There is no need to wait in line prior to dinner. Dining Rooms open at designated seating times and your table is reserved each night of your cruise.

A = Animator's Palate, Deck 3, Aft E = Enchanted Garden, Deck 2, Midship R = Royal Palace, Deck 3, Midship



Create the most memorable experiences during your Disney Cruise Line vacation with Port Adventures! Our Port Adventures are designed for you to see the best our ports have to offer. Stop by the Port Adventures Desk, Deck 5, Midship where our friendly team will be happy to assist you plan your adventure!

There is an adventure for everyone on your Disney Dream® vacation.

ADULT ACTIVITY HIGHLIGHTS



1820 SOCIETY (GUESTS 18-20 YEARS ONLY)
1820 Society is an exclusive option for young adult guests. Come meet fellow passengers and learn about the excellent activities that the Dream offers to create the perfect cruise experience.



80'S MUSIC CHALLENGE
"Moon Walk" back to the 80's as we put your musical knowledge of the decade to the test.

CRUISIN' SOLO GATHERING

Single, single parent or just traveling alone? Join your Cruise Staff for an informal gathering.



KRAZY KARAOKE
Take to the stage, grab a microphone and sing your favorite tunes with your Club Host and DJ.



MAKING OF THE DREAM
Explore the origins of Disney Cruise Line and the latest and greatest innovations conjured especially for the Disney Dream in this fascinating and entertaining behind-the-scenes program.



MATCH YOUR MATE
It's time to play everyone's favorite couples game show, Match Your Mate!



Senses Spa & Salon has a variety of seminars and fitness classes available throughout the cruise. Pamper yourself with therapeutic spa treatments of heat, steam, rain and water in luxurious and tranquil private rooms. Deck 11, Forward.

BEVERAGE SEMINARS

Your Beverage team has a host of tastings and seminars to entertain and educate you. Stop by Guest Services Deck 3, Midship to pre-book these experiences. (nominal fee applies).

Whiskey Tasting - Stem to Stern Wine Tasting - Martini Tasting
Cognac Tasting - Tequila & Margarita Tasting - Mixology

FUN FOR ALL AGES HIGHLIGHTS



ANYONE CAN COOK
Every Chef has a specialty, and ours is no exception. Get a taste of perfection with each day's recipe.



A PIRATE'S LIFE FOR ME
Calling all Pirates, we be! If ye have an adventurous spirit or pirate savvy, come spin the "Wheel of Destiny" for a treasure trove of fun be ripe for the takin' in this action packed pirate game show.



BUCCANEER BLAST FIREWORKS
What's a pirate party without some fireworks to remind the other ships who be ruling the oceans blue? (Weather Permitting)



CASTAWAY CAY 5K (10+)
Sign up today for the Castaway Cay 5K! Please visit the information desk in the terminal to sign up before you board, and if you're registered already, to sign your waiver. You may also visit the Port Adventures Desk or the Guest Services Desk to register at any time prior to our arrival at Disney Castaway Cay. Please note that runners must be 10 years of age or older to participate.



DISNEY VACATION CLUB GROUP PREVIEW
Join us for our interactive group presentation to learn about taking magical vacations year after year! For more information, please see a Disney Vacation Club Cast Member on Deck 4, Midship, or call 7-2805 from your stateroom phone.



FAMILY FUSION
Bring the entire family and test your Disney knowledge in the high-tech interactive game show, Family Fusion.



JACK-JACK'S INCREDIBLE DIAPER DASH
Calling all baby cruisers! It's time to take to the mat to see who's the fastest crawler of the seven seas! Register your baby 15 minutes prior to the big race.



JACKPOT BINGO
CASH prizes and raffle prizes to be won in our family friendly Bingo sessions with your Cruise Staff. Those under the age of 18 must be accompanied by an adult to play.



MICKEY'S PIRATES IN THE CARIBBEAN
It's a Pirate Celebration, me hearties! Come experience all the pirate fun alongside Captain Mickey Mouse and his famous pirate crew. Play, dance and acquire all the pirate skills needed to become an official member of Mickey's Pirate Crew! (Weather Permitting)



SO YOU THINK YOU KNOW YOUR FAMILY?
This fun-filled family game show is always full of surprises. Find out how well you know, or don't know your family!

VERY MERRYTIME HOLIDAY HIGHLIGHTS



MICKEY'S TREE LIGHTING MAGIC
Come gather in the ship's atrium to experience this magical Disney Cruise Line holiday tradition. Join Mickey and the gang for a holiday sing along as a family of dreamers helps us create a little Disney magic by lighting our holiday tree.



SANTA'S WINTER WONDERLAND BALL
An evening of spectacle and holiday enchantment, join your Cruise Director and our holiday Snowbells as we celebrate the arrival of a very special holiday guest - Santa Claus! Get your cameras ready. You don't want to miss Santa and the World Famous Disney Characters as they create a Winter Wonderland....at sea!

STORYTIME WITH MRS. CLAU

Full of fun and whimsy, Mrs. Claus makes a very special visit to the ship's atrium to read classic holiday tales to all the children - and children at heart!



SEA YA REAL SOON
A final chance to come together with your Disney friends and Merrytime cruisers. The children are all invited to the stairs to perform their own candlelight magic. Hugs, photos and joy will prevail!

YOUTH ACTIVITIES INFO & HIGHLIGHTS



Dine & Play
A convenience for families dining at 8:15 pm, our Youth Activities counselors will be available at 9:15 pm at the entrance of Royal Palace, Enchanted Garden and Animator's Palate dining rooms to bring registered children to join the fun in the Youth Activities areas.

Pre-School Fun

Disney's Oceaneer Club is reserved for only those between 3-5 years of age. This is a time for them to become acclimated to Disney's Oceaneer Club, make new friends and join in on a lot of fun-filled programs and activities. Please note after Pre-School Fun has concluded, Disney's Oceaneer Club will be open for Secured Programming for ages 3-12.

Pre-Tween Fun

This is a time reserved exclusively for ages 9-12 where children can participate in exciting activities just for them!

Youth Activities Open House

Open House is an opportunity for all to come and participate in a variety of exciting activities and free time in the Oceaneer Club, Oceaneer Lab, Edge and Vibe throughout the cruise. During these times secured programming will still be offered in the other venue for those looking to check their children into care.

Youth Activities Venue Tour

Come and take a tour of Disney's Oceaneer Club and Disney's Oceaneer Lab. This informative tour will give you the information you need to know about our exciting spaces and activities offered for children ages 3-12. Please see your Personal Navigator or the Navigator App for times.



3 - 12 years old

ALOHA LUAU

It's party time, Hawaiian style! Come join us for a Luau experience and learn how to dance like Lilo & Stitch!

TOY STORY BOOT CAMP

Join Corporal Green in our own version of boot camp as we learn how to have fun - The Toy Story way!

JEDI TRAINING: EXPERIENCE THE FORCE

Become one with the Force as you take your first step into a larger world.



3 - 12 years old

SUPER SLOPPY SCIENCE

Join Professor Make-O-Mess in some of the most extreme experiments you will ever see in the world of Super Sloppy Science!

PLUTO'S PAJAMA PARTY

Bring the little ones in their pajamas but there will be anything but sleep when Pluto and friends host the ultimate slumber party.

GET THE HOOK

A villainous villain has stolen Captain Hook's prized golden hook. Become a member of the Top Deck Detective Agency and help solve the clues to retrieve Hook's hook.

STITCH'S ADVENTURE SQUAD

Stitch, everyone's favorite alien, is making an appearance to share some of his mischievous games and activities.



11 - 14 years old

TAKING IT TO THE EDGE

Come to Edge and get all the info you need to squeeze every bit of fun out of your stay onboard

DESCENDANT'S DEN DJ SPIN OFF

Photo Booth! DJ lessons! Fun games! Sing! Laugh! Dance! It's the next generation of fun - Descendants style.



14 - 17 years old

THE DOWNLOAD

Come up to Vibe and help plan all the fun activities you will be doing this cruise with your new friends!

VIBE MOVIE MAKERS

Ready! Set! ACTION! Come learn the skill of movie making as only Disney can do it. Whether you're on screen or behind the camera you're sure to have fun making a one-of-a-kind movie based on the best of Disney.

BUENA VISTA THEATRE

Deck 4 & 5, Midship

FEATURE MOVIES THIS VOYAGE

MONDAY - PORT CANAVERAL, FLORIDA

12:45 pm	G	Toy Story 4
5:15 pm	PG	The Lion King (2019)
8:15 pm	PG	The Lion King (2019)
10:45 pm	PG	Maleficent: Mistress of Evil

TUESDAY - NASSAU, BAHAMAS

11:30 am	PG	Maleficent: Mistress of Evil
2:30 pm	PG	The Lion King (2019)
5:15 pm	G	Toy Story 4
8:15 pm	G	Toy Story 4
11:00 pm	PG	Aladdin (2019)

WEDNESDAY - DISNEY CASTAWAY CAY

9:00 am	PG	Family Movie Fun Time: Aladdin (2019)
11:45 am	G	Toy Story 4
2:30 pm	PG	The Lion King (2019)
5:15 pm	PG	Maleficent: Mistress of Evil
8:15 pm	PG	Maleficent: Mistress of Evil
11:00 pm	PG	The Lion King (2019)

THURSDAY - DAY AT SEA

8:45 am	G	Family Movie Fun Time: Frozen II
12:30 pm	PG	The Lion King (2019)
3:00 pm	PG	Maleficent: Mistress of Evil
5:30 pm	G	Frozen II
8:15 pm	G	Frozen II
11:00 pm	G	Frozen II

Subject to change.

FEATURED VARIETY ACT THIS VOYAGE



DAVID GATTI: A MAGICAL JOURNEY

An award winning magician, David is an Italian by birth who has been hooked by illusion and wizardry since childhood. Over an illustrious career of 2 decades, this state-of-the-art magician has mesmerized many with his incredible and unique talents through several European TV shows and Satellite programs recently headlining his show in Las Vegas. He has performed in more than 50 countries across 4 continents. The theatrical storytelling style and incredible sleight of hand are his trademarks.

MORE TO ENJOY ONBOARD



NEW FALL 2020 ITINERARIES

New Fall 2020 Itineraries announced! Celebrate the seasons at sea with our Halloween on the High Seas Cruises or Very Merrytime Cruises and set sail for tropical destinations in The Bahamas, the Caribbean, Mexico, and a limited-time return to Bermuda. Visit the Disney Vacation Planning Desk, Deck 4, Midship for more information.



DISNEY VACATION CLUB® MEMBER CELEBRATION

Join us as we welcome you onboard with a fun, interactive event where you can catch the latest updates at Disney Vacation Club! Please see a Disney Vacation Club Cast Member on Deck 4, Midship or call 7-2805 from your stateroom phone for more information.



PORT SHOPPING INFORMATION

Join your Port Shopping Guide Austin today at 2:45 pm in the Buena Vista Theatre to learn about the incredible shopping ashore in Nassau, including give a-ways and prizes!

Connect @Sea

FREE INTERNET EMBARKATION DAY SPECIAL

Sign up for a free 50 MB Internet package today and enjoy it throughout the cruise! This offer is only available from noon to midnight on the day your cruise begins. On your wireless device, simply find the "DCL-Guest" Wi-Fi Network, go to www.dclguest.com to create an account, and get your free 0 MB of data to start sharing your memories even before you leave port! If you have any questions, ask our Connect@Sea Expert located at Deck 4, Midship. No purchase necessary. The free 50 MB package can only be used for the duration of the cruise. Only one free package per stateroom, but everyone can share it. Unused data from a package will not be reimbursed and it is non-transferable between voyages or ships.

RELIGIOUS SERVICES

Groups who need a location to practice their faith may contact Guest Services for availability information.

FREE ON DEMAND TV

Watch Disney movies, Hollywood features, ABC shows, and even captioned content, plus much more "On Demand" for FREE in the comfort of your stateroom! Bookmark your movie and come back to watch it later. Press MENU on your stateroom television remote control and follow the prompts.

SENSES SPA & SALON



DECK 11, FORWARD

Extension 7-1465

RAINFOREST

Come enjoy our serenity lounge, with heated chairs, dry sauna, aromatherapy steam rooms and rainfall, misting showers. \$129/Couples or \$69/Single

IONITHERME

Would you like to lose 3-8 inches? Speed up your metabolism, reduce fluid retention and the appearance of cellulite? Firm your muscle tone? If so, this is the best treatment for you! \$149/session

ONBOARD ACUPUNCTURE

Naturally effective for pain, arthritis, sea sickness, stress, digestion, weight loss, and much more. \$169/session or \$450/3 sessions

THE PERFECT DAY

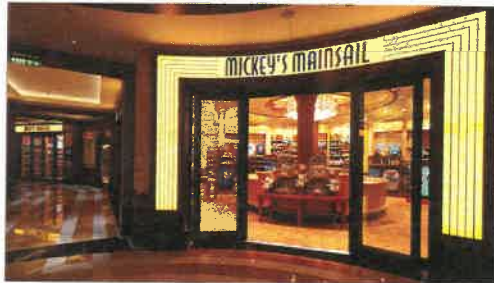
The Perfect Day: 50 minute full body massage, Foot & Ankle Massage, Scalp Massage & Hydrating Facial. 75 minute treatment - \$169.

REJUVENATION SPA CONSULTATIONS

Ready to enhance your natural beauty? Book your free Facial Rejuvenation consultation with our Rejuvenation Doctor at the Senses Spa.

AN 18% AUTO GRATUITY IS ADDED TO ALL SENSES SPA SERVICES.

MERCHANDISE SHOPPING



DECK 3, FORWARD

TIFFANY & CO. GRAND CELEBRATION

Explore classic and cutting-edge Tiffany & Co. jewelry collections and meet our friendly, professional staff during this onboard party honoring the luxury brand. The fun starts tonight at Tiffany & Co. on Deck 4, Midship.

WINE & SHINE AT WHITE CAPS

Join our diamond experts in White Caps to experience some of the most stunning jewelry and watch collections on the sea. Stop by the Wine & Shine event on Nassau evening and ask how you can enter the Guess the Carat Weight draw!

DISNEY-INSPIRED PANDORA JEWELRY

The Disney Parks Collection by PANDORA Jewelry features charms inspired by some of Disney's most beloved characters. Commemorate your voyage with exclusive Disney Cruise Line charms from White Caps, Deck 3, forward.

BIBBIDI BOBBIDI BOUTIQUE

A makeover fit for a princess! Fairy Godmothers-in-Training are ready with magic and pixie dust to give your Prince and Princess the transformation of a lifetime. Make your reservations by visiting Bibbidi Bobbidi Boutique, Deck 5, Midship or dialing extension 7-9438. Limited space available.

DUE TO PORT REGULATIONS, WHEN THE SHIP IS DOCKED, THE STORES WILL REMAIN CLOSED.

SHUTTERS PHOTO GALLERY



DECK 4, MIDSHIP

OUR CRUISE PHOTOS

View your embarkation photos starting at 7:00pm at Shutters, Deck 4, Midship and find out about all the amazing Photo opportunities available for you this cruise. Visit Shutters on Deck 4, Midship for all your photographic needs, from digital cameras, batteries, binoculars and accessories.

Ask a friendly photographer about Our Cruise Photos and the incredible value of an unlimited digital photo package, which includes all of your stateroom's photos. Ask a friendly photographer about Our Cruise Photos and the incredible value of an unlimited digital photo package, which includes all of your stateroom's photos.

PROFESSIONAL PORTRAITS

Professional portraits will be available during your cruise in the Lobby Atrium, Deck 3, Midship. Please refer to your daily personal Navigator for available hours.

PHOTO BOOK

Visit Shutters today and turn your magical vacation memories into an impressive keepsake, a personal one-of-a-kind Photo Book. Fill every page with memories of your cruise vacation.

PHOTOS ARE AVAILABLE FOR VIEWING ON OUR INTERACTIVE PHOTO KIOSKS APPROXIMATELY FIVE HOURS AFTER BEING TAKEN AND ARE ONLY AVAILABLE FOR PURCHASE DURING THIS CRUISE.

IMPORTANT INFORMATION

Security Notice/ Unaccompanied Minor Ashore
All Guests (including children) who wish to disembark or embark the ship are required to present their Key to the World card at the gangway. A photo ID is also required for those Guests who are 18 years of age or older. Guests under the age of 18 are required to have a Parent, Guardian or other responsible adult complete the "Traveling with Minors" section of "My Online Check-In" prior to sailing or sign an authorization form at the Guest Services Desk if they wish to go ashore unaccompanied or with any adult from another stateroom.

Incident Weather
For the safety of all Guests, outdoor events may be changed due to unforeseen weather conditions.

Insect Repellent Advisory
The Centers for Disease Control and Prevention recommends wearing long-sleeved shirts and pants along with insect repellent to protect against mosquito bites and related illnesses when going ashore. Complimentary insect repellent is available on the pier as you exit the ship. Insect repellent is also available for purchase in White Caps. When using both sunscreen and insect repellent, use sunscreen first and apply insect repellent on top of sunscreen.

Corridor Quiet Hours
As a courtesy to all our Guests, please recognize quiet hallway hours from 10:00 pm til 8:00 am.

No Reserved Seats Policy
As a courtesy to all our Guests, we kindly advise that the saving of seats is not permitted in the Walt Disney Theatre, and the saving of the sun loungers is not permitted on Deck 11, 12, and 13. Items left unattended will be returned to lost and found at Guest Services, Deck 3 Midship.

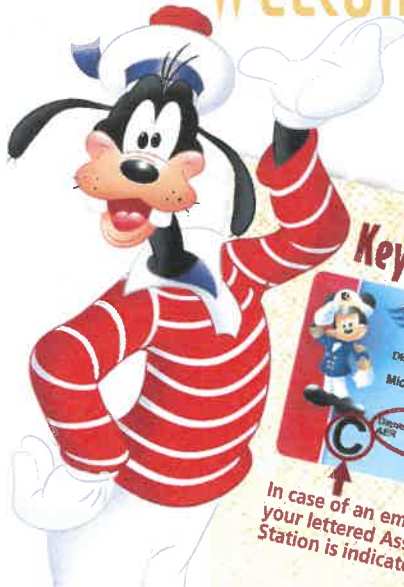
Cold and Flu Reminder
Please wash hands frequently and thoroughly, particularly before meals. Contact the Health Center by dialing 7-1927, should anyone in your party become ill.

Smoking
For the comfort of our Guests, the following areas are designated as smoking areas:
*Deck 13, forward, port side by Currents
*Deck 12, aft, port side outdoor area that is accessible through the Meridian Lounge
*Deck 4, aft, port side from 6:00 pm to 6:00 am only (all of Deck 4 is non-smoking from 6:00 am to 6:00 pm)
Smoking is prohibited inside all Guest staterooms and on stateroom verandahs. Guests found smoking in their staterooms or on their verandahs will be charged a \$250 stateroom recovery fee. Electronic cigarettes may only be used in designated smoking areas.

Walt Disney Theatre
Theatrical performances may use artificial fog, strobe lights, pyrotechnics and other special effects. For the safety of our performers and the comfort of those around you, the use of any photography, video recording device or any electronic equipment is prohibited.

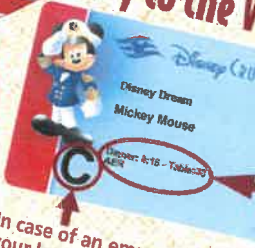
Verandah Safety
Please do not leave any personal items on your verandah that may be blown overboard or present a fire hazard if left unattended. Do not throw anything over the ship's side. Guests should not sit, lean or climb on the railing or leave children unattended on the verandah. Do not open the verandah and stateroom doors simultaneously as this may create a wind effect and could cause the doors to slam unexpectedly.

WELCOME ABOARD!



Key to the World Card Information

In case of an emergency, your lettered Assembly Station is indicated here.



- ♥ Dinner seatings are 5:45 pm or 8:15 pm.
- ♥ Your table number for the cruise is located after your dinner seating.
- ♥ Dinner locations and rotation are indicated by letters under your dinner time.
 - A - Animator's Palate, Deck 3, Aft
 - E - Enchanted Garden, Deck 2, Midship
 - R - Royal Palace, Deck 3, Midship

SAILING AWAY

It's time to go Sailing Away! Join Mickey and Minnie and the rest of the gang as they welcome you aboard the Disney Dream.

Deck Stage,
Deck 11, Midship,
4:30 pm

Afternoon	1:45	2:00	2:15	2:30	2:45	3:00	3:15	3:30	3:45	4:00	4:15	4:30	4:45	5:00	5:15	5:30	5:45	6:00	6:15	6:30	6:45					
FUNNEL VISION	Toy Story (G) Open Captioning Funnel Vision								Mandatory Guest Assembly Drill 4:00 pm All ship services will be suspended during this time. Please refer to the posted drill instructions on the back of your stateroom door prior to heading to your Assembly Station. You will not need your life jacket for the Guest Assembly Drill. Your Assembly Station is indicated on your Key To The World card.				Sailing Away Deck 11 Stage		Zootopia (PG) Open Captioning Funnel Vision											
BUENA VISTA THEATRE					Port Shopping Talk										The Lion King (2019) (PG) Duration: 1 Hour 58 Minutes											
CHARACTERS															Sailing Away Deck 11 Stage		Donald Lobby Atrium (H)		Mickey Mouse Balcony		Goofy Lobby Atrium (V)					
FUN FOR ALL AGES	Walking Ship Tour Preludes		Tour del Barco Preludes		Disney Vacation Club Member Celebration D Lounge												Piano Classics with Bernadett Bihari District Lounge		Red Carpet Arrivals Preludes		The Golden Mickeys Walt Disney Theatre					
ADULTS	Wacky Relays Oceaneer Lab		Walking Ship Tour Preludes				Magic PlayFloor Oceaneer Lab						Kids Me! Bath Padi Party (Nom. Fee) Senses Fitness Center		Smooth Sounds with Sunshine Trio Lobby Atrium											
VIBE 14-17 YEARS OLD	Youth Activities Open House & Registration																									
EDGE 11-14 YEARS OLD	Youth Activities Open House & Registration																									
OCEANEER LAB 3-12 YEARS OLD	Wacky Relays		Youth Activities Open House				Magic PlayFloor						Complimentary Footprint Analysis Senses Fitness Center		Complimentary Face & Body Consultations Senses Spa & Salon		Cruisin' Solo Cove Cafe									
OCEANEER CLUB 3-12 YEARS OLD	Magic PlayFloor		Dance Party		Youth Tour		Open House						Youth Activities Open House		Open For Secured Activities		Bingo		GAGA Ball		Meet Your Counselors					
													Youth Activities Open House		Open For Secured Activities		Memory Wall		Star Wars							



Evening	7:00	7:15	7:30	7:45	8:00	8:15	8:30	8:45	9:00	9:15	9:30	9:45	10:00	10:15	10:30	10:45	11:00	11:15	11:30	11:45	12:00	
FUNNEL VISION	Wreck-It Ralph (PG) Funnel Vision				Disney's A Christmas Carol (G) Funnel Vision				Guardians of the Galaxy (PG-13) Funnel Vision													
BUENA VISTA THEATRE					The Lion King (2019) (PG) Duration: 1 Hour 58 Minutes				Maleficent: Mistress of Evil (PG) Duration: 1 Hour 58 Minutes													
CHARACTERS			Mickey's Tree Lighting Magic Lobby Atrium		Cinderella Balcony		Donald Lobby Atrium (H)		Daisy Lobby Atrium (H)				Santa's Winter Wonderland Ball Lobby Atrium									
FUN FOR ALL AGES	Bingo Pre-Sales Evolution		\$3000 Mega Jackpot Bingo Evolution		Red Carpet Arrivals Preludes		The Golden Mickeys Walt Disney Theatre				Disney Animation: Creating a Character D Lounge		Family Fusion D Lounge		Family Superstar Karaoke D Lounge							
ADULTS			70s Music Trivia Pub 687		NFL: Baltimore Ravens vs Los Angeles Rams Pub 687 (Subject to Satellite Availability)				Dream Quest Evolution		The Magic & Illusion of David Gatti Evolution		Cruise Staff DJ Evolution								Cruise Staff DJ District Lounge	
VIBE 14-17 YEARS OLD			Game Challenge		Marvel Trivia		Foosball Tournament		GAGA Ball		Ice Breakers		The Download								Heroes and Villains	
EDGE 11-14 YEARS OLD	Trivia Challenge		Video Game Challenge		GAGA Ball		Karaoke		Game Challenge		Profiles		Taking it to the Edge		Ice Breakers						Dodgeball on the Sports Deck	
OCEANEER LAB 3-12 YEARS OLD	Game Challenge				Disney Animation: Creating a Character		Get the Hook				Pluto's Pajama Party		Hula Hoop Jam		Magic PlayFloor		4 Square Competition					
OCEANEER CLUB 3-12 YEARS OLD	Disney Infinity Challenge		Magic PlayFloor		Aloha Luau		Glow Jam		Toy Story Boot Camp				Go Fetch				Star Wars Galaxy Designers					

Bahama Mama (Alcoholic)
Passion Cream Freeze (Non-Alcoholic)
DRINK OF THE DAY

YOUTH ACTIVITIES OPEN HOUSE
A non-secured program with activities for families, adults and children to enjoy together.





THE GOLDEN MICKEYS

A Timeless Tribute

WALT DISNEY THEATRE
DECK 3 & 4, FORWARD
6:15 pm & 8:30 pm

As a courtesy to all Guests, we kindly advise that the saving of seats is not permitted in the Walt Disney Theatre.

Assistance available at the entrance to the Walt Disney Theatre 30 minutes prior to show time.

Character Meet and Greet Experience Reservation

Port Adventures Desk, Deck 5, Midship - 11:45 am - 2:00 pm

The following appearances require a reservation. Space is limited

For Guests who did not book online, a limited number of reservations are available for:

- Princess Gathering
- Frozen Meet and Greet

Character Appearances

SAILING AWAY
Deck 11 Stage - 4:30 pm

MICKEY MOUSE
Balcony - 5:15 pm

DONALD DUCK
Lobby Atrium (H)
5:30 pm & 7:45 pm

GOOFY
Lobby Atrium (V) - 5:45 pm

MICKEY'S TREE LIGHTING MAGIC
Lobby Atrium - 7:30 pm

CINDERELLA
Balcony - 7:45 pm

DAISY DUCK
Lobby Atrium (H) - 8:15 pm

SANTA'S WINTER WONDERLAND BALL
Lobby Atrium - 10:15 pm

(H) Hallway - (S) Starboard Side - (P) Port Side - (V) Vestibule

For details of daily Disney character appearances, refer to the character line on your Navigator Grid, or the digital character board in the Lobby Atrium. Lines close 15 minutes after advertised start time.

SHIP DIRECTORY

YOUTH ACTIVITIES

DISNEY'S OCEANEER CLUB	DECK 5, MID	12:00 PM - 3:30 PM	4:30 PM - 12:00 AM
DISNEY'S OCEANEER LAB	DECK 5, MID	12:00 PM - 3:30 PM	4:30 PM - 12:00 AM
EDGE	DECK 13, MID	12:00 PM - 3:30 PM	4:30 PM - 12:00 AM
IT'S A SMALL WORLD NURSERY	DECK 5, MID	12:00 PM - 3:30 PM	4:30 PM - 12:00 AM
VIBE	DECK 4, FWD	12:00 PM - 3:30 PM	4:30 PM - 1:00 AM

POOLS & MORE

* Children under 12 must have adult supervision in pool areas.

AQUADUCK	DECK 12, AFT	12:00 PM - 3:00 PM	4:30 PM - 10:00 PM
DONALD'S POOL	DECK 11, MID	12:00 PM - 3:15 PM	6:00 PM - 10:00 PM
FUNNEL PUDDLE	DECK 12, FWD	12:00 PM - 6:00 PM	
MICKEY'S POOL	DECK 11, MID	12:00 PM - 3:15 PM	4:30 PM - 10:00 PM
MICKEY'S SLIDE	DECK 11, MID	12:00 PM - 3:00 PM	4:30 PM - 6:00 PM
NEMO'S REEF	DECK 11, MID	12:00 PM - 3:15 PM	4:30 PM - 8:00 PM
QUIET COVE POOL (18+)	DECK 11, FWD	12:00 PM - 11:00 PM	
SATELLITE FALLS (18+)	DECK 13, FWD	12:00 PM - 9:00 PM	

Please note, "selfie sticks" are not permitted in any aquatic area.

Complimentary pool vests are available for children to use in the pools onboard. Located on the pool deck.

RECREATION

GOLF & SPORTS SIMULATORS	DECK 13, AFT	12:00 PM - 3:15 PM	4:30 PM - 6:00 PM
GOOFY GOLF	DECK 13, AFT	5:30 PM - 10:00 PM	
GOOFY'S SPORTS DECK	DECK 13, AFT	12:00 PM - 6:00 PM	
MIDSHIP DETECTIVE AGENCY	DECK 2 & 5, MID	11:00 AM - 11:00 PM	
PORT ADVENTURES DESK	DECK 5, MID	12:00 PM - 3:30 PM	4:30 PM - 10:00 PM
SENSES FITNESS CENTER (18+)	DECK 11, FWD	12:00 PM - 10:00 PM	

GENERAL INFORMATION

BUENA VISTA THEATRE	DECK 4 & 5, MID	SHOWTIMES
CONNECT@SEA DESK	DECK 4, MID	1:00 PM - 3:00 PM 5:00 PM - 6:00 PM 7:00 PM - 10:00 PM
DISNEY VACATION CLUB	DECK 4, MID	5:00 PM - 10:00 PM
DISNEY VACATION PLANNING	DECK 4, MID	5:00 PM - 10:00 PM
GUEST SERVICES	DECK 3, MID	24 HOURS
HAIRBRAIDING	DECK 11, MID	5:00 PM - 10:00 PM
MEDICAL HEALTH CENTER	DECK 1, FWD	4:30 PM - 7:00 PM
PRELUDES	DECK 3, FWD	5:45 PM - 9:00 PM
SENSES SPA AND SALON	DECK 11, FWD	12:00 PM - 10:00 PM
SHUTTERS PHOTO GALLERY	DECK 4, MID	7:00 PM - 10:30 PM
WALT DISNEY THEATRE	DECK 3 & 4, FWD	SHOWTIMES

SHOPPING

BIBBIDI BOBBIDI BOUTIQUE	DECK 5, MID	12:00 PM - 3:00 PM	5:00 PM - 9:00 PM
MICKEY'S MAINSAIL	DECK 3, FWD	5:45 PM - 11:00 PM	
PORT SHOPPING DESK	DECK 5, MID	7:00 PM - 8:00 PM	
SEA TREASURES	DECK 3, FWD	5:45 PM - 11:00 PM	
TIFFANY & CO.	DECK 4, MID	5:45 PM - 11:00 PM	
VISTA GALLERY	DECK 2, MID		
WHITE CAPS	DECK 3, FWD	5:45 PM - 11:00 PM	
WHOZITS & WHATZITS	DECK 11, MID	6:30 PM - 11:00 PM	

DUE TO PORT REGULATIONS, WHEN THE SHIP IS DOCKED, THE STORES MUST REMAIN CLOSED.

EVENING ATTIRE | Cruise Casual

DINING & LOUNGES

LUNCH

CABANAS	DECK 11, AFT	11:45 AM - 3:00 PM
ANIMATOR'S PALATE	DECK 3, AFT	11:45 AM - 2:00 PM
FILLMORE'S FAVORITES	DECK 11, MID	12:00 PM - 3:30 PM 4:30 PM - 6:00 PM
LUIGI'S PIZZA	DECK 11, MID	12:00 PM - 3:30 PM 4:30 PM - 6:00 PM
TOW MATER'S GRILL	DECK 11, MID	12:00 PM - 3:30 PM 4:30 PM - 6:00 PM

DINNER

ANIMATOR'S PALATE	DECK 3, AFT	5:45 PM & 8:15 PM
ENCHANTED GARDEN	DECK 2, MID	5:45 PM & 8:15 PM
PALO (18+) (RESERVATIONS REQ. & NON-FEE APPLIES)	DECK 12, AFT	6:00 PM - 8:30 PM
REMY (18+) (RESERVATIONS REQ. & NON-FEE APPLIES)	DECK 12, AFT	6:00 PM - 8:30 PM
ROYAL PALACE	DECK 3, MID	5:45 PM & 8:15 PM
TOW MATER'S GRILL	DECK 11, MID	6:00 PM - 11:00 PM

LATE NIGHT SNACKS

LUIGI'S PIZZA	DECK 11, MID	9:30 PM - 12:00 AM
THE DISTRICT	DECK 4, AFT	10:45 PM - 11:45 PM

ADDED FEATURES

BEVERAGE STATION	DECK 11, MID	24 HOURS
EYE SCREAM	DECK 11, MID	11:45 AM - 3:30 PM 4:30 PM - 11:30 PM
ROOM SERVICE	DIAL 0	OPENS AT 1:30 PM
VANELLOPE'S SWEETS AND TREATS	DECK 11, AFT	11:30 AM - 3:30 PM 4:30 PM - 10:30 PM

ENTERTAINMENT - LOUNGES - BARS

Adults must be 21 and older to consume alcoholic beverages.

BON VOYAGE	DECK 3, MID	11:30 AM - 11:00 PM
COVE BAR (18+)	DECK 11, FWD	11:30 AM - 10:30 PM
COVE CAFE (18+)	DECK 11, FWD	7:00 AM - 12:00 AM
CURRENTS (18+)	DECK 13, FWD	11:30 AM - 11:00 PM
D LOUNGE	DECK 4, MID	SHOWTIMES
DISTRICT LOUNGE (18+ AFTER 9:00 PM)	DECK 4, AFT	11:30 AM - 2:00 AM
EVOLUTION (18+ AFTER 9:00 PM)	DECK 4, AFT	7:15 PM - 8:30 PM 9:30 PM - 12:00 AM
FROZONE TREATS	DECK 11, MID	11:30 AM - 6:00 PM
MERIDIAN (18+)	DECK 12, AFT	5:00 PM - 12:00 AM
OUTLOOK (18+)	DECK 14, MID	
PINK: WINE AND CHAMPAGNE BAR (18+)	DECK 4, AFT	5:00 PM - 12:00 AM
PUB 687 (18+ AFTER 9:00 PM)	DECK 4, AFT	11:30 AM - 12:00 AM
SENSES JUICE BAR	DECK 11, FWD	4:00 PM - 6:00 PM
SKYLINE (18+)	DECK 4, AFT	5:00 PM - 12:00 AM
VISTA CAFE	DECK 4, MID	7:00 AM - 10:30 PM
WAVES	DECK 12, AFT	11:30 AM - 6:00 PM

Public Health Advisory: Consuming raw or under-cooked meats, poultry, seafood, shellfish, or eggs may increase your risk for food borne illness, especially if you have certain medical condition.



MIDSHIP DETECTIVE AGENCY

Use your detective know-how and our special detective "badge" to search the ship and catch your criminal! Deck 2 & 5, Midship Kiosks.

Disney Cruise Line
PORT ADVENTURES

Visit the Port Adventures Desk, Deck 5, Midship, for bookings & questions.

IMPORTANT NUMBERS

Fire/Security: 7-3001
Medical Emergency: 7-3000
Health Center: 7-1927