

VOYAGE NAVIGATOR



FRIDAY
JUNE 15, 2018

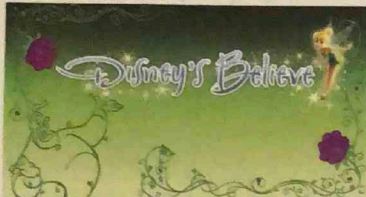
TO

WEDNESDAY
JUNE 20, 2018

CRUISE HIGHLIGHTS

FRIDAY

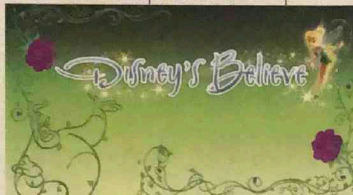
PORT CANAVERAL
Port Departure: 5:00 pm
All Aboard: 3:45 pm
Attire: Cruise Casual



DISNEY'S BELIEVE
Walt Disney Theatre
6:15 pm & 8:30 pm

SATURDAY

DISNEY CASTAWAY CAY
All Ashore: 8:30 am
All Aboard: 4:45 pm
Attire: Optional Dress Up



DISNEY'S BELIEVE
Walt Disney Theatre
6:15 pm & 8:30 pm

SUNDAY

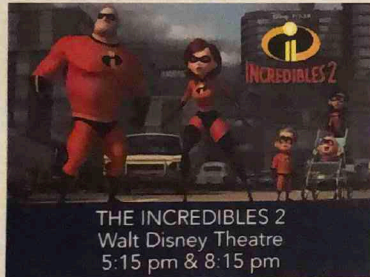
NASSAU
All Ashore: 8:15 am
All Aboard: 5:15 pm
Attire: Cruise Casual



BEAUTY AND THE BEAST
Walt Disney Theatre
6:00 pm & 8:30 pm

MONDAY

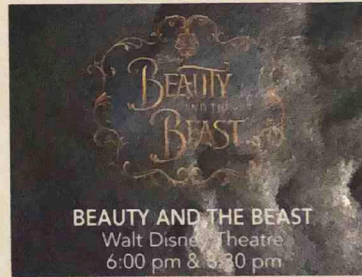
DISNEY CASTAWAY CAY
All Ashore: 8:30 am
All Aboard: 4:45 pm
Attire: Pirate or Cruise Casual



THE INCREDIBLES 2
Walt Disney Theatre
5:15 pm & 8:15 pm

TUESDAY

DAY AT SEA
Attire: Cruise Casual



BEAUTY AND THE BEAST
Walt Disney Theatre
6:00 pm & 8:30 pm

Subject to change.

WELCOME ABOARD!

YOUR STATEROOM & LUGGAGE

Staterooms will be ready at 1:30 pm. To allow your Stateroom Host/ess time to prepare your room, please do not remove the blue stanchion straps. Stateroom hosts will deliver luggage throughout the day until 6:00 pm.

STATEROOMS WITH BUNK BEDS

Bunk beds are recessed into the ceiling and will be prepared during evening turndown service by your Stateroom Host/ess.

STATEROOM SAFE

Each stateroom is equipped with a secured storage safe. Instructions for use are located on the safe.

TO CHANGE DINING ASSIGNMENT

Requests for different seating times will be taken today:
1:00 pm - 3:30 pm; Book in Animator's Palate, Deck 3, Aft
3:30 pm - 5:00 pm; please dial 7-1831, 7-1832, or 7-1833

REMY & PALO DINING RESERVATIONS

Reservations are required and will be taken on a first come basis today:
1:00 pm - 3:30 pm; Animator's Palate, Deck 3, Aft

Please dial 7-9734 for Remy or 7-9735 for Palo for more information. Cover charge applicable.

Adult Exclusive Dining Opportunity! Guests are invited to make 2 dinner reservations at our two adult-exclusive restaurants, Palo & Remy. This includes one reservation on embarkation evening and one more on another night of the cruise. Reservations are subject to availability and a specialty dining charge will apply.

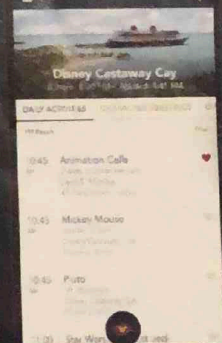
DINNER

5:45 pm - First seating 8:15 pm - Second seating
Please check your Key To The World Card for details of your dining rotation, and bring them to your specific dining location. There is no need to wait in line prior to dinner. Dining Rooms open at designated seating times and your table is reserved each night of your cruise.

A = Animator's Palate, Deck 3, Aft E = Enchanted Garden, Deck 2, Midship R = Royal Palace, Deck 3, Midship

DOWNLOAD THE NEW
**DISNEY CRUISE LINE
NAVIGATOR APP**
BEFORE YOU SAIL AWAY

Available
on iOS
and
Android



Create the most memorable experiences during your Disney Cruise Line vacation with Port Adventures! Our Port Adventures are designed for you to see the best our ports have to offer. Stop by the Port Adventures Desk, Deck 5, Midship where our friendly team will be happy to assist you plan your adventure!

There is an adventure for everyone on your Disney Dream® vacation.



IMPORTANT NUMBERS

Fire/Security: 7-3001

Medical Emergency: 7-3000

Health Center: 7-1927

ADULT ACTIVITY HIGHLIGHTS



1820 SOCIETY (GUESTS 18-20 YEARS ONLY)
1820 Society is an exclusive option for young adult guests. Come meet fellow passengers and learn about the excellent activities that the Dream offers to create the perfect cruise experience.



80'S MUSIC CHALLENGE
"Moon Walk" back to the 80's as we put your musical knowledge of the decade to the test.



CRUISIN' SOLO GATHERING
Single, single parent or just traveling alone? Join your Cruise Staff for an informal gathering.



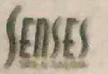
KRAZY KARAOKE
Take to the stage, grab a microphone and sing your favorite tunes with your Club Host and DJ.



MAKING OF THE DREAM
Explore the origins of Disney Cruise Line and the latest and greatest innovations conjured especially for the Disney Dream in this fascinating and entertaining behind-the-scenes program.



MATCH YOUR MATE
It's time to play everyone's favorite couples game show, Match Your Mate!



Senses Spa & Salon has a variety of seminars and fitness classes available throughout the cruise. Pamper yourself with therapeutic spa treatments of heat, steam, rain and water in luxurious and tranquil private rooms. Deck 11, Forward.

REVEREND WINE

Your Beverage team has a host of tastings and seminars to entertain and educate you. Stop by Guest Services Deck 3, Midship to pre-book these experiences. (Minimal fee applies).

Whiskey Tasting - Stem to Stem Wine Tasting - Martini Tasting
Cognac Tasting - Tequila & Margarita Tasting - Mixology

FUN FOR ALL AGES HIGHLIGHTS



ANYONE CAN COOK
Every Chef has a specialty, and ours is no exception. Get a taste of perfection with each day's recipe.



A PIRATES LIFE FOR ME
Calling all Pirates, we be! If ye have an adventurous spirit or pirate savvy, come spin the "Wheel of Destiny" for a packed pirate game show.



BUCCANEER BLAST FIREWORKS
What's a pirate party without some fireworks to remind the other ships who be ruling the oceans blue? (Weather Permitting)



CASTAWAY CAY 5K (10+)
Sign up today for the Castaway Cay 5K! Please visit the Port Adventures Desk or the Guest Services Desk to register at anytime prior to our arrival at Disney Castaway Cay. Please note that runners must be 10 years of age or older to participate.



DISNEY CHANNEL ON DECK
It's time for a Disney Channel afternoon poolside! Your Cruise Staff will host an exciting day of games and contests in between your favorite Disney Channel shows! So sit back, relax, and enjoy the sun!



DISNEY JUNIOR PIRATE & PRINCESS DANCE PARTY
Calling all Pirates and Princesses! Come join us for a family dance party featuring music and fun activities from Jake & the Neverland Pirates and Sofia the First. Whether you favor tiaras or treasure chests, there's something for you at our Disney Junior Pirate & Princess Dance Party!



DISNEY VACATION CLUB GROUP PREVIEW
Join us for our interactive group presentation to learn about taking magical vacations year after year! For more information, please see a Disney Vacation Club Cast Member on Deck 4, Midship, or call 7-2805 from your stateroom phone.



ESPN SPORTS CAMP
Calling all athletes! Gather your team and participate in one of a kind sports camp at sea that only Disney and ESPN could offer. Learn new games, compete as teams & individuals - and have some fun!



FAMILY FUSION
Bring the entire family and test your Disney knowledge in the high-tech interactive game show, Family Fusion.



JACK-JACK'S INCREDIBLE DIAPER DASH
Calling all baby cruisers! It's time to take to the mat to see who's the fastest crawler of the seven seas! Register your baby 15 minutes prior to the big race.



JACKPOT BINGO
CASH prizes and raffle prizes to be won in our family friendly Bingo sessions with your Cruise Staff. Those under the age of 18 must be accompanied by an adult to play.



MICKEY'S PIRATES IN THE CARIBBEAN
It's a Pirate Celebration, me hearties! Come experience all the pirate fun alongside Captain Mickey Mouse and his famous pirate crew. Play, dance and acquire all the pirate skills needed to become an official member of Mickey's Pirate Crew! (Weather Permitting)



MIRROR MIRROR
Join the Magic Mirror in the fairest game show of them all, Mirror, Mirror. There's trivia, singing and even a relay race. Hi Ho, Hi Ho, it's off to play we go



SALUDOS AMIGOS FIESTA
Come see what Donald and his friends are up to this time. Bring the family out to this interactive dance party featuring fun Latin music! Your family will learn to salsa, merengue and just have a Latin good time!



SO YOU THINK YOU KNOW YOUR FAMILY?
This fun-filled family game show is always full of surprises. Find out how well you know, or don't know your family!

YOUTH ACTIVITIES INFO & HIGHLIGHTS



Dine & Play
A convenience for families dining at 8:15 pm, our Youth Activities counselors will be available at 9:15 pm at the entrance of Royal Palace, Enchanted Garden and Animator's Palate dining rooms to bring registered children to join the fun in the Youth Activities areas.

Pre-School Fun
Disney's Oceaneer Club is reserved for only those between 3-5 years of age. This is a time for them to become acclimated to Disney's Oceaneer Club, make new friends and join in on a lot of fun-filled programs and activities. Please note after Pre-School Fun has concluded, Disney's Oceaneer Club will be open for Secured Programming for ages 3-12.

Youth Activities Open House
Open House is an opportunity for all to come and participate in a variety of exciting activities and free time in the Oceaneer Club, Oceaneer Lab, Edge and Vibe throughout the cruise. During these times secured programming will still be offered in the other venue for those looking to check their children into care.

Youth Activities Venue Tour
Come and take a tour of Disney's Oceaneer Club and Disney's Oceaneer Lab. This informative tour will give you the information you need to know about our exciting spaces and activities offered for children ages 3-12. Please see your Personal Navigator or the Navigator App for times.



3 - 12 years old

MICKEY'S PUZZLE PLAYTIME
Come and play with Mickey & friends as they share their favorite games, puzzles and dances!

TOY STORY BOOT CAMP
Join Corporal Green in our own version of boot camp as we learn how to have fun - The Toy Story way!

REDI TRAINING: EXPERIENCE THE FORCE
Become one with the Force as you take your first step into a larger world.



3 - 12 years old

SUPER SLOPPY SCIENCE
Join Professor Make-O-Mess in some of the most extreme experiments you will ever see in the world of Super Sloppy Science!

PISTON CUP
It's Dinoco time and you're part of the pit crew! Design your own race car and see if you've got what it takes to end up in the winner's circle!

GET THE HOOK
A villainous villain has stolen Captain Hook's prized golden hook. Become a member of the Top Deck Detective Agency and help solve the clues to retrieve Hook's hook.

STITCH'S ADVENTURE SQUAD
Stitch, everyone's favorite alien, is making an appearance to share some of his mischievous games and activities.



11 - 14 years old

HEROES VS. VILLAINS
Join your favorite hero or villain team on a series of activities that will take place throughout the cruise.

THAT'S HILARIOUS
Ever wanted to show off your comedy skills? Then be a part of the cast for the crazy improv show "That's Hilarious" and put on a live show for your friends.



14 - 17 years old

THE DOWNLOAD
Come up to Vibe and help plan all the fun activities you will be doing this cruise with your new friends!

GOTCHA
You will try to eliminate your victim by various methods collecting points throughout the day, last person standing with the most points wins.

BUENA VISTA THEATRE

Deck 4 & 5, Midship

FEATURE MOVIES THIS VOYAGE

FRIDAY - PORT CANAVERAL, FLORIDA

5:30 pm	PG	Coco	
8:15 pm	PG	Coco	
10:30 pm	PG-13	Avengers: Infinity War	3D

SATURDAY - DISNEY CASTAWAY CAY

8:30 am	PG-13	Solo: A Star Wars Story	
11:15 am	PG	Coco	
1:45 pm	PG-13	Solo: A Star Wars Story	3D
4:45 pm	PG-13	Avengers: Infinity War	3D
8:00 pm	PG-13	Avengers: Infinity War	3D
11:15 pm	PG-13	Solo: A Star Wars Story	3D

SUNDAY - NASSAU, BAHAMAS

8:30 am	PG	Family Movie Fun Time: Coco	Open Captioning
11:15 am	PG-13	Avengers: Infinity War	Open Captioning
2:30 pm	PG-13	Black Panther	
5:00 pm	PG-13	Solo: A Star Wars Story	3D
8:15 pm	PG-13	Solo: A Star Wars Story	3D
11:00 pm	PG-13	Avengers: Infinity War	

MONDAY - DISNEY CASTAWAY CAY

11:00 am	PG-13	Solo: A Star Wars Story	Open Captioning
2:00 pm	PG	Coco	3D
4:45 pm	PG-13	Avengers: Infinity War	
8:00 pm	PG-13	Avengers: Infinity War	
11:15 pm	PG	The Incredibles 2	3D

TUESDAY - DAY AT SEA

8:30 am	PG	Family Movie Fun Time: The Incredibles 2	Open Captioning
11:00 am	PG-13	Solo: A Star Wars Story	
2:30 pm	PG	The Incredibles 2	
5:30 pm	PG	The Incredibles 2	3D
8:15 pm	PG	The Incredibles 2	3D
10:45 pm	PG-13	Solo: A Star Wars Story	Subject to change.

FEATURED VARIETY ACT THIS VOYAGE



MAGIC AND ILLUSION WITH JUSTINO ZOPPE
If you enjoy shows like "America's Got Talent", "Cirque du Soleil" and the magic of "David Copperfield" then you will love Justino! His show takes you on a high speed visual journey, presenting a magical evening of grand illusions, quick change, extreme stunts, hilarious comedy, sleight of hand and aerial acrobatics. All enhanced by amazing visual FX, stunning costumes and a heart stopping soundtrack.



THE COMEDY OF MARYELLEN HOOPER
A veteran in the world of stand-up, Maryellen Hooper's comedy has taken her from clubs and colleges to theaters and television. In 1998, the comedy industry awarded Maryellen "Female Comedian of the Year" at the American Comedy Awards.

A physical, story-teller, Maryellen's act is an ever-evolving story about her life as a woman, wife and mother. Never crude or offensive, her accounts of life's little annoyances leave audiences exhausted from laughter.

MORE TO ENJOY ONBOARD



NEW FALL 2019 ITINERARIES

New Fall 2019 Itineraries announced! Set sail for spectacular ports including Bermuda and Quebec City, Canada. Disney Cruise Line will continue sailing to sun-soaked destinations on Bahamian, Caribbean and Baja cruises! Visit the Disney Vacation Planning Center, Deck 4, Midship for more information. Disney Vacation Planning tends to get busy on the last day of sailing. Don't miss the opportunity to plan your next Disney vacation.



DISNEY VACATION CLUB® MEMBERS PREVIEW

Join us as we welcome you onboard with a fun, interactive event where you can catch the latest updates at Disney Vacation Club! Please see a Disney Vacation Club Cast Member on Deck 4, Midship or call 7-2805 from your stateroom phone for more information.

PORT SHOPPING INFORMATION

Join your Port Shopping Guide Gemma today at 2:45 pm in the Buena Vista Theatre to learn about the incredible shopping ashore in Nassau! Over \$1,000 in give-a-ways and prizes! Arrive early for free gifts and more! Collect your free ship charm from the Port Shopping Desk, Deck 4, Midship, today from 6:00 pm - 8:00 pm.



Connect@Sea

FREE INTERNET EMBARKATION DAY SPECIAL

Sign up for a free 50 MB Internet package today and enjoy it throughout the cruise! This offer is only available from noon to midnight on the day your cruise begins. On your wireless device, simply find the "DCL-Guest" Wi-Fi Network, go to www.dclguest.com to create an account, and get your free 50 MB of data to start sharing your memories even before you leave port! If you have any questions, ask our Connect@Sea Expert located at Deck 4, Midship. No purchase necessary. The free 50 MB package can only be used for the duration of the cruise. Only one free package per stateroom, but everyone can share it. Unused data from a package will not be reimbursed and it is non-transferable between voyages or ships.

RELIGIOUS SERVICES

Groups who need a location to practice their faith may contact Guest Services for availability information.

SENSES SPA & SALON



DECK 11, FORWARD

Extension 7-1465

RAINFOREST

Come enjoy our serenity lounge, with heated chairs, dry sauna, aromatherapy steam rooms and rainfall, misting showers.

IONITHERME

Would you like to lose 3-8 inches? Speed up your metabolism, reduce fluid retention and the appearance of cellulite? Firm your muscle tone? If so, this is the best treatment for you! \$155/session

ONBOARD ACUPUNCTURE

Naturally effective for pain, arthritis, sea sickness, stress, digestion, weight loss, and much more. \$150/session or \$360/3 sessions.

REJUVENATION SPA CONSULTATIONS

Ready to enhance your natural beauty? Book your free Facial Rejuvenation consultation with our Rejuvenation Doctor at the Senses Spa.

MERCHANDISE SHOPPING



DECK 3, FORWARD

STYLISH WATCHES ONBOARD

Whether you need a tool for timekeeping or a fun fashion accessory, visit White Caps and browse a wide selection of stylish watches available. Popular brands include Breitling and Hublot. Deck 3, Forward

THE DISNEY PARKS COLLECTION BY

PANDORA JEWELRY

The Disney Parks Collection by PANDORA Jewelry features hand-finished .925 sterling silver and 14K gold charms inspired by some of Disney's most beloved characters. Visit White Caps on Deck 3, Forward, where you'll find a specially designed sterling silver charm featuring a Disney Cruise Line ship.

BIBBIDI BOBBIDI BOUTIQUE

A makeover fit for a princess! Fairy Godmothers-in-Training are ready with magic and pixie dust to give your Prince and Princess the transformation of a lifetime. Make your reservations by visiting Bibbidi Bobbidi Boutique, Deck 5, Midship or dialing extension 7-9438. Limited space available.

SHUTTERS PHOTO GALLERY



DECK 4, MIDSHIP

OUR CRUISE PHOTOS

View your embarkation photos starting at 10:00 am at Shutters, Deck 4, Midship and enter our raffle for a chance to win a 10 Digital Images Photo USB worth \$149.95. Raffle entries are accepted until 10:30 pm tonight.

*Terms and conditions apply.

Visit Shutters on Deck 4, Midship for all your photography needs, from digital cameras, batteries, binoculars and accessories.

Ask a friendly photographer about Our Cruise Photos and the incredible value of an unlimited digital photo package, which includes all of your stateroom's photos.

PROFESSIONAL PORTRAITS

Professional portraits will be available during your cruise in the Lobby Atrium, Deck 3, Midship. Please refer to your daily personal Navigator for available hours.

PHOTO BOOK

Visit Shutters today and turn your magical vacation memories into an impressive keepsake, a personal one-of-a-kind Photo Book. Fill every page with memories of your cruise vacation.

PHOTOS ARE AVAILABLE FOR VIEWING ON OUR INTERACTIVE PHOTO KIOSKS APPROXIMATELY FIVE HOURS AFTER BEING TAKEN AND ARE ONLY AVAILABLE FOR PURCHASE DURING THIS CRUISE.

AN 18% AUTO GRATUITY IS ADDED TO ALL SENSES SPA SERVICES.

DUE TO PORT REGULATIONS, WHEN THE SHIP IS DOCKED, THE STORES WILL REMAIN CLOSED.

IMPORTANT INFORMATION

Security Notice

All Guests (including children) who wish to disembark the ship are required to present their Key to the World card at the gangway. A photo ID is also required for those Guests who are 18 years of age or older. Guests under the age of 18 are required to have a parent, guardian or other responsible adult sign an authorization form at the Guest Service Desk if they wish to go ashore unaccompanied or with any adult from another stateroom.

Incident Weather

For the safety of all Guests, outdoor events may be changed due to unforeseen weather conditions.

Insect Repellent Advisory

The Centers for Disease Control and Prevention recommends wearing long-sleeved shirts and pants along with insect repellent to protect against mosquito bites and related illnesses when going ashore. Complimentary insect repellent is available on the pier as you exit the ship. Insect repellent is also available for purchase in White Caps. When using both sunscreen and insect repellent, use sunscreen first and apply insect repellent on top of sunscreen.

Corridor Quiet Hours

As a courtesy to all our Guests, please recognize quiet hallway hours from 10:00 pm til 8:00 am.

Environmental Message

With Disney's commitment to the Environment, please refrain from throwing anything over the Ship's side. Thank you!

No Reserved Seats Policy

As a courtesy to all our Guests, we kindly advise that the saving of seats is not permitted in the Walt Disney Theatre, and the saving of the sun loungers is not permitted on Deck 11, 12, and 13. Items left unattended will be returned to lost and found at Guest Services, Deck 3 Midship.

Cold and Flu Reminder

Please wash hands frequently and thoroughly, particularly before meals. Contact the Health Center by dialing 7-1927, should anyone in your party become ill.

Smoking

For the comfort of our Guests, the following areas are designated as smoking areas:

*Deck 13, forward, port side by Currents
*Deck 12, aft, port side outdoor area that is accessible through the Meridian Lounge

*Deck 4, aft, port side from 6:00 pm to 6:00 am only (all of Deck 4 is non-smoking from 6:00 am to 6:00 pm)
Smoking is prohibited inside all Guest staterooms and on stateroom verandahs. Guests found smoking in their staterooms or on their verandahs will be charged a \$250 stateroom recovery fee. Electronic cigarettes may only be used in designated smoking areas.

Walt Disney Theatre

Theatrical performances may use artificial fog, strobe lights, pyrotechnics and other special effects. For the safety of our performers and the comfort of those around you, the use of any photography, video recording device or any electronic equipment is prohibited.

Verandah Safety

Please do not leave any personal items on your verandah that may be blown overboard or present a fire hazard if left unattended. Guests should not sit, lean or climb on the railing or leave children unattended on the verandah. Do not open the verandah and stateroom doors simultaneously as this may create a wind effect and could cause the doors to slam unexpectedly.

WELCOME ABOARD!



Key to the World Card Information

Disney Cruise Line
Disney Dream
Mickey Mouse
2017

Key:
C - Mickey Mouse
M - Minnie Mouse

Dinner seatings are 5:45 pm or 8:15 pm, located after your dinner seating.

Dinner locations and rotation are indicated by letters under your dinner time.
A - Animator's Palate, Deck 3, Aft
E - Enchanted Garden, Deck 2, Midship
R - Royal Palace, Deck 3, Midship

In case of an emergency, your lettered Assembly Station is indicated here.

SAILING AWAY

It's time to go Sailing Away! Join Mickey and Minnie and the rest of the gang as they welcome you aboard the Disney Dream.

Deck Stage, Deck 11, Midship, 4:30 pm

Bahama Mama (Alcoholic)
Passion Cream Frezzer (Non-Alcoholic)

DRINK OF THE DAY

Afternoon	1:45	2:00	2:15	2:30	2:45	3:00	3:15	3:30	3:45	4:00	4:15	4:30	4:45	5:00	5:15	5:30	5:45	6:00	6:15	6:30	6:45	
FUNNEL VISION	Lilo & Stitch (PG) Funnel Vision																					
BUENA VISTA THEATRE					Port Shopping Talk Buena Vista Theatre																	
CHARACTERS																						
FUN FOR ALL AGES	Walking Ship Tour Preludes				Disney Vacation Club Members' Preview D Lounge								Sailing Away Funnel Vision		Tangled (PG) Funnel Vision		Open Capturing Funnel Vision					
ADULTS	Acupuncture Demonstration Senses Fitness Center				Spa Raffle (18+) Senses Spa & Salon																	
VIBE	Youth Activities Open House																					
EDGE	Youth Activities Open House																					
OCEANEER LAB	Game Challenge		Youth Activities Open House		Magic Play Floor																	
OCEANEER CLUB	Magic PlayFloor		Dance Party		YA Tour		YA Open House															

Mandatory Guest Assembly Drill 4:00 pm

All ship services will be suspended during this time.

Please refer to the posted drill instructions prior to heading to your Assembly Station.

You will not need your life jacket for the Guest Assembly Drill.

Your Assembly Station is indicated on your Key To The World card.



Evening	7:00	7:15	7:30	7:45	8:00	8:15	8:30	8:45	9:00	9:15	9:30	9:45	10:00	10:15	10:30	10:45	11:00	11:15	11:30	11:45	12:00	
FUNNEL VISION	Movie Under the Stars										Triple Feature											
BUENA VISTA THEATRE	Coco (PG) Duration: 1 Hour 49 Minutes										Avengers: Infinity War (PG-13) Duration: 2 Hours 36 Minutes											
CHARACTERS	Pluto	Cinderella	Minnie									Goofy	Belle	Minnie								
FUN FOR ALL AGES	Family Dance Party Evolution				Disney's Bahama Mama				Disney Animation Creating a Character D Lounge		Music through the Decades - Summer Breeze Lobby Atrium		Family Fusion D Lounge		Family Superstar Karaoke D Lounge							
ADULTS	Chill Out - The Vitos District Lounge		50's and 60's Music Trivia Pub 687				Ultimate Disney Trivia District Lounge		Violin Serenades Pink Wine and Champagne Bar		1920 Society Sit 'n Blend n Taste II Cove Cafe		Snippets Evolution		Magic & Music of Justino Zopp		Silent DJ Party Evolution		Cruise Staff DJ Going Underground District Lounge			
VIBE	GAGA Ball		Game Challenge		Foosball Tournament		Ice Breakers		The Download		Heroes and Villains											
EDGE	Foosball Tournament		Video Game Challenge		Game Challenge		Profiles		Taking it to The Edge		Ice Breakers		Dodgeball									
OCEANEER LAB	Game Challenge		Super Sloppy Science		Animation		Pluto's Pajama Party		Magic Play Floor				4 Square Competition									
OCEANEER CLUB	Aloha Luau		Magic PlayFloor		Toy Story Boot Camp		Game Challenge		Disney Infinity Challenge		Star Wars Galaxy Designer											

...with activities for families...

FRIDAY, JUNE 15, 2018 - PORT CANAVERAL, FLORIDA



Disney's Believe

Genie from Aladdin and many of Disney's most beloved magic makers take a father on a magical journey to show him that anything is possible if you just believe

WALT DISNEY THEATRE
DECK 3 & 4, FORWARD
6:15 pm & 8:30 pm

As a courtesy to all Guests, we kindly advise that the stowing of seats is not permitted in the Walt Disney Theatre.

Assistance available at the entrance to the Walt Disney Theatre 30 minutes prior to show time

Character Meet and Greet Ticket Distribution

Port Adventures Desk, Deck 5, Midship - 11:45 am - 2:00 pm
For Guests who did not reserve Meet and Greets online, a limited number of tickets are available today to meet some of your favorite Disney friends.

- Princess Gathering
- Frozen Meet and Greet

Tickets are required for each of these Meet and Greets.

Space is limited.

Character Appearances

SAILING AWAY

Deck 11 Stage - 4:30 pm

BELLE

Lobby Atrium (V) - 9:45 pm

MICKEY MOUSE

Balcony
5:15 pm, 7:30 pm & 9:30 pm

MINNIE MOUSE

Lobby Atrium (H)
5:30 pm, 7:45 pm & 10:00 pm

GOOFY

Lobby Atrium (V) - 5:45 pm
Lobby Atrium (H) - 9:30 pm

PLUTO

Lobby Atrium (H) - 7:15 pm

CINDERELLA

Lobby Atrium (V) - 7:30 pm



(H) Hallway - (S) Starboard Side - (P) Port Side - (V) Vestibule
For details of daily Disney character appearances, refer to the character line on your Navigator Grid, or the digital character board in the Lobby Atrium.
Lines close 15 minutes after advertised start time

SHIP DIRECTORY

YOUTH ACTIVITIES			
DISNEY'S OCEANEER CLUB	DECK 5, MID	12:00 PM - 4:30 PM	3:30 PM - 12:00 AM
DISNEY'S OCEANEER LAB	DECK 5, MID	12:00 PM - 4:30 PM	3:30 PM - 12:00 AM
EDGE	DECK 13, MID	12:00 PM - 4:30 PM	3:30 PM - 1:00 AM
IT'S A SMALL WORLD NURSERY	DECK 5, MID	12:00 PM - 4:30 PM	3:30 PM - 12:00 AM
VIBE	DECK 4, FWD	12:00 PM - 4:30 PM	3:30 PM - 1:00 AM

POOLS & MORE			
* Children under 12 must have adult supervision in pool areas.			
AQUADUCK	DECK 12, AFT	12:00 PM - 4:30 PM	3:00 PM - 11:00 PM
DONALD'S POOL	DECK 11, MID	12:00 PM - 6:00 PM	3:15 PM - 11:00 PM
FUNNEL PUDDLE	DECK 12, FWD	12:00 PM - 4:30 PM	6:00 PM - 11:00 PM
MICKY'S POOL	DECK 11, MID	12:00 PM - 4:30 PM	3:15 PM - 11:00 PM
MICKY'S SUDE	DECK 11, MID	12:00 PM - 4:30 PM	3:15 PM - 7:00 PM
NEMO'S REEF	DECK 11, MID	12:00 PM - 4:30 PM	3:15 PM - 7:00 PM
QUIET COVE POOL (18+)	DECK 11, FWD	12:00 PM - 4:30 PM	11:00 PM - 9:00 PM
SATELLITE FALLS (18+)	DECK 13, FWD	12:00 PM - 4:30 PM	9:00 PM - 11:00 PM

Please note, "selfie sticks" are not permitted in any aquatic area.
Complimentary pool vests are available for children to use in the pools onboard.
Located on the pool deck.

RECREATION			
GOLF/SPORTS SIMULATOR	DECK 13, AFT	12:00 PM - 4:30 PM	3:15 PM - 6:00 PM
GOOFY GOLF	DECK 13, AFT	5:30 PM - 7:00 PM	11:00 PM - 6:00 PM
GOOFY'S SPORTS DECK	DECK 13, AFT	12:00 PM - 5:30 PM	6:00 PM - 3:30 PM
MIDSHIP DETECTIVE AGENCY	DECK 2 & 5, MID	11:00 AM - 4:30 PM	11:00 PM - 9:00 PM
PORT ADVENTURES DESK	DECK 5, MID	12:00 PM - 4:30 PM	9:00 PM - 10:00 PM
SENSES FITNESS CENTER (18+)	DECK 11, FWD	12:00 PM - 4:30 PM	10:00 PM - 10:00 PM

GENERAL INFORMATION			
BUENA VISTA THEATRE	DECK 4 & 5, MID	SHOWTIMES	
CONNECT@SEA DESK	DECK 4, MID	1:00 PM - 7:00 PM	3:30 PM - 10:00 PM
DISNEY VACATION CLUB	DECK 4, MID	5:00 PM - 7:00 PM	10:00 PM - 8:00 PM
DISNEY VACATION PLANNING	DECK 4, MID	5:00 PM - 7:00 PM	8:00 PM - 24 HOURS
GUEST SERVICES	DECK 3, MID	24 HOURS	
HAIRBRAIDING	DECK 11, MID	5:00 PM - 7:00 PM	10:00 PM - 12:00 PM
MEDICAL HEALTH CENTER	DECK 1, FWD	4:30 PM - 6:00 PM	7:00 PM - 8:00 PM
PORT SHOPPING DESK	DECK 4, MID	6:00 PM - 8:00 PM	8:00 PM - 9:00 PM
PRELUDES	DECK 3, FWD	5:45 PM - 8:00 PM	6:30 PM - 9:00 PM
SENSES SPA AND SALON	DECK 11, FWD	12:00 PM - 7:00 PM	10:00 PM - 10:30 PM
SHUTTERS PHOTO GALLERY	DECK 4, MID	7:00 PM - 9:00 PM	10:30 PM - SHOWTIMES
WALT DISNEY THEATRE	DECK 3 & 4, FWD	SHOWTIMES	

SHOPPING			
BIBBIDI BOBBIDI BOUTIQUE	DECK 5, MID	12:00 PM - 5:00 PM	3:00 PM - 9:00 PM
MICKY'S MAINSAIL	DECK 3, FWD	5:45 PM - 7:15 PM	11:00 PM - 8:30 PM
SEA TREASURES	DECK 3, FWD	5:45 PM - 9:30 PM	11:00 PM - 10:30 PM
VISTA GALLERY	DECK 4, MID	7:15 PM - 9:30 PM	10:30 PM - 11:00 PM
WHITE CAPS	DECK 3, FWD	5:45 PM - 4:30 PM	11:00 PM - 3:15 PM
WHOZITS & WHATZITS	DECK 11, MID	12:00 PM - 4:30 PM	3:15 PM - 9:00 PM
		4:30 PM - 9:00 PM	6:00 PM - 11:00 PM

DUE TO PORT REGULATIONS, WHEN THE SHIP IS DOCKED, THE STORES MUST REMAIN CLOSED.

EVENING ATTIRE

Cruise Casual

WEATHER FORECAST

Today: Partly Cloudy
High: 86°F / 30°C

DINING & LOUNGES

LUNCH			
CARANAS	DECK 11, AFT	11:45 AM - 4:30 PM	3:00 PM - 6:00 PM
ENCHANTED GARDEN	DECK 2, MID	11:45 AM - 4:30 PM	2:00 PM - 6:00 PM
FILLMORE'S FAVORITES	DECK 11, MID	12:00 PM - 4:30 PM	3:30 PM - 6:00 PM
LUIGI'S PIZZA	DECK 11, MID	12:00 PM - 4:30 PM	3:30 PM - 6:00 PM
TOW MATER'S GRILL	DECK 11, MID	12:00 PM - 4:30 PM	3:30 PM - 6:00 PM

DINNER			
ANIMATOR'S PALATE	DECK 3, AFT	5:45 PM & 7:00 PM	8:15 PM - 8:15 PM
ENCHANTED GARDEN	DECK 2, MID	5:45 PM & 7:00 PM	8:15 PM - 8:15 PM
PALO (18+) (Reservations Req. & Now For Arrival)	DECK 12, AFT	6:00 PM - 7:00 PM	8:30 PM - 8:30 PM
REMY (18+) (Reservations Req. & Now For Arrival)	DECK 12, AFT	7:00 PM - 8:15 PM	8:30 PM - 8:30 PM
ROYAL PALACE	DECK 3, MID	5:45 PM & 7:00 PM	8:15 PM - 8:15 PM
TOW MATER'S GRILL	DECK 11, MID	6:00 PM - 4:30 PM	11:00 PM - 11:00 PM

LATE NIGHT SNACKS			
LUIGI'S PIZZA	DECK 11, MID	9:30 PM - 10:45 PM	12:00 AM - 11:45 PM
THE DISTRICT	DECK 4, AFT	10:45 PM - 4:30 PM	11:45 PM - 11:45 PM

BEVERAGE STATION			
BEVERAGE STATION	DECK 11, MID	24 HOURS	
EYE SCREAM	DECK 11, MID	11:45 AM - 4:30 PM	11:30 PM - 24 HOURS
ROOM SERVICE	DIAL O	24 HOURS	
VAELLOPE'S SWEETS AND TREATS	DECK 11, AFT	11:30 AM - 4:30 PM	3:30 PM - 10:30 PM

DISNEY'S VACATION CLUB			
Adults must be 21 and older to consume alcoholic beverages.			
BON VOYAGE	DECK 3, MID	11:45 AM - 5:00 PM	11:00 PM - 11:00 PM
COVE BAR (18+)	DECK 11, FWD	11:45 AM - 5:00 PM	11:00 PM - 12:00 AM
COVE CAFE (18+)	DECK 11, FWD	11:45 AM - 5:00 PM	12:00 AM - 12:00 AM
CURRY (18+)	DECK 13, FWD	11:45 AM - 5:00 PM	12:00 AM - 12:00 AM
DJ JUNGLE	DECK 4, MID	SHOWTIMES	
DISTRICT LOUNGE (18+ AFTER 9:00 PM)	DECK 4, AFT	11:45 AM - 9:30 PM	2:00 AM - 12:00 AM
EVOLUTION (18+ AFTER 9:00 PM)	DECK 4, AFT	9:30 PM - 11:45 AM	12:00 AM - 6:00 PM
FROZONE TREATS	DECK 11, MID	11:45 AM - 5:00 PM	12:00 AM - 12:00 AM
MERIDIAN (18+)	DECK 12, AFT	5:00 PM - 8:00 PM	12:00 AM - 12:00 AM
OUTLOOK (18+)	DECK 14, MID	SHOWTIMES	
PINK WINE AND CHAMPAGNE BAR (18+)	DECK 4, AFT	5:00 PM - 11:45 AM	12:00 AM - 12:00 AM
PUB 687 (18+ AFTER 9:00 PM)	DECK 4, AFT	11:45 AM - 5:00 PM	12:00 AM - 12:00 AM
SENSES JUICE BAR	DECK 11, FWD	11:45 AM - 5:00 PM	8:00 PM - 12:00 AM
SKYLINE (18+)	DECK 4, AFT	5:00 PM - 11:45 AM	12:00 AM - 10:30 PM
VISTA CAFE	DECK 4, MID	11:45 AM - 4:30 PM	6:00 PM - 6:00 PM
WAVES	DECK 12, AFT	11:45 AM - 4:30 PM	6:00 PM - 6:00 PM

Public Health Advisory: Consuming raw or under-cooked meats, poultry, seafood, shellfish, or eggs may increase your risk for food borne illness, especially if you have certain medical condition.



MIDSHIP DETECTIVE AGENCY

Use your detective know-how and our special detective "badge" to search the ship and catch your criminal! Deck 2 & 5, Midship Kiosks.

Disney Cruise Line
PORT ADVENTURES
Visit the Port Adventures Desk,
Deck 5, Midship, for bookings & questions.

IMPORTANT NUMBERS

Fire/Security: 7-3001
Medical Emergency: 7-3000
Health Center: 7-1927