

VOYAGE NAVIGATOR

FRIDAY
JUNE 14, 2019

TO

SATURDAY
JUNE 22, 2019

CRUISE HIGHLIGHTS

FRIDAY

CIVITAVECCHIA (ROME), ITALY
Port Departure: 5:00 pm
All Aboard: 4:00 pm
Attire: Cruise Casual

SATURDAY

SALERNO (POMPEII), ITALY
All Ashore: 7:30 am
All Aboard: 6:00 pm
Attire: Cruise Casual

SUNDAY

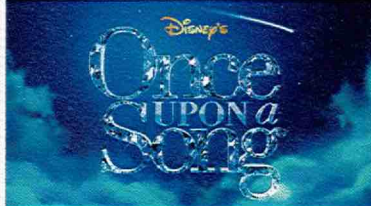
DAY AT SEA
Attire: Formal

MONDAY

LA SPEZIA (FLORENCE, PISA), ITALY
All Ashore: 7:00 am
All Aboard: 6:45 pm
Attire: Pirate or Cruise Casual



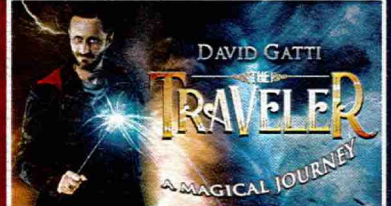
BE OUR GUEST - WELCOME ABOARD SHOW
Walt Disney Theatre
6:30 pm & 8:45 pm



ONCE UPON A SONG
Walt Disney Theatre
6:45 pm & 8:45 pm



TWICE CHARMED
Walt Disney Theatre
6:30 pm & 8:45 pm



SHOWTIME: DAVID GATTI
Walt Disney Theatre
6:45 pm & 8:45 pm

TUESDAY

VILLEFRANCHE (MONTE CARLO / NICE), FRANCE
First Tender: 7:30 am
Last Tender: 5:45 pm
Attire: Cruise Casual

WEDNESDAY

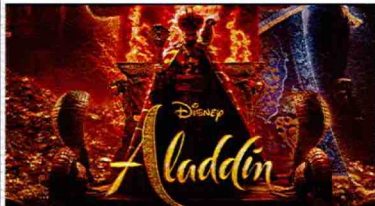
MARSEILLE, FRANCE
All Ashore: 8:30 am
All Aboard: 4:45 pm
Attire: Semi Formal

THURSDAY

BARCELONA, SPAIN
All Ashore: 8:00 am
All Aboard: 6:00 pm
Attire: Cruise Casual

FRIDAY

DAY AT SEA
Attire: Cruise Casual



ALADDIN (2019) (PG)
Walt Disney Theatre
5:45 pm & 8:45 pm



TANGLED: THE MUSICAL
Walt Disney Theatre
6:30 pm & 8:45 pm



SHOWTIME: JUNNK
Walt Disney Theatre
6:45 pm & 8:45 pm



DISNEY DREAMS: AN ENCHANTED CLASSIC
Walt Disney Theatre
6:30 pm & 8:45 pm

Subject to change.

WELCOME ABOARD!

YOUR STATEROOM & LUGGAGE

Staterooms will be ready at 1:30 pm. To allow your Stateroom Host/ess time to prepare your room, please do not remove the blue stanchion straps. Stateroom hosts will deliver luggage throughout the day until 5:30 pm.

STATEROOMS WITH BUNK BEDS

Bunk beds are recessed into the ceiling and will be prepared during evening turndown service by your Stateroom Host/ess.

STATEROOM SAFE

Each stateroom is equipped with a secured storage safe. Instructions for use are located on the safe.

TO CHANGE DINING ASSIGNMENT

Requests for different seating times will be taken today:

- 12:30 pm - 3:00 pm; Book in Promenade Lounge, Deck 3, Aft or please dial 7-1831 and leave a voicemail.

PALO DINING RESERVATIONS

Reservations are required and will be taken on a first come basis today:

- 12:30 pm - 3:00 pm in Promenade Lounge, Deck 3, Aft, or please dial 7-6843 and leave a voicemail.

Adult Exclusive Dining Opportunity! Guests are invited to make 2 dinner reservations at our adult-exclusive restaurant, Palo. This includes one reservation on embarkation evening and one more on another night of the cruise.

DINNER

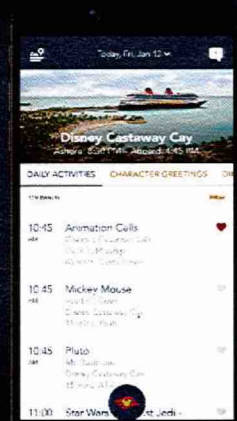
6:00 pm - First seating 8:30 pm - Second seating

Please check your Key To The World Card for details of your dining rotation, and bring it to your specific dining location. There is no need to wait in line prior to dinner. Dining Rooms open at designated seating times and your table is reserved each night of your cruise.

A = Animator's Palate, Deck 4, Aft L = Lumière's, Deck 3, Midship R = Rapunzel's Royal Table, Deck 3, Aft

DOWNLOAD THE NEW
**DISNEY CRUISE LINE
NAVIGATOR APP**
BEFORE YOU SAIL AWAY

Available
on iOS
and
Android



Create the most memorable experiences during your Disney Cruise Line vacation with Port Adventures! Our Port Adventures are designed for you to see the best our ports have to offer. Stop by the Port Adventures Desk, Deck 3, Midship where our friendly team will be happy to assist you plan your adventure!
There is an adventure for everyone on your Disney Magic® vacation.



IMPORTANT NUMBERS Fire/Security: 7-3001 Medical Emergency: 7-3000 Health Center: 7-1927

ADULT ACTIVITY HIGHLIGHTS



1820 SOCIETY (GUESTS 18-20 YEARS ONLY)
1820 Society is an exclusive option for young adult Guests. Come meet fellow passengers and learn about the excellent activities that the Disney Magic offers to create the perfect cruise experience.



80'S FLASHBACK
The 80's are back! Join your Cruise Staff team, in testing your 80's knowledge in this high energy 80's revival.



KRAZY KARAOKE
Take to the stage, grab a microphone and sing your favorite tunes with your Club Host and DJ.



MATCH YOUR MATE
It's time to play everyone's favorite couples game show, Match Your Mate!



Senses Spa & Salon has a variety of seminars and fitness classes available throughout the cruise. Pamper yourself with therapeutic spa treatments of heat, steam, rain and water in luxurious and tranquil private rooms. Deck 9, Forward.

BEVERAGE SEMINARS

Your Beverage team has a host of tastings and seminars to entertain and educate you. Stop by Promenade Lounge, Deck 3, Aft, 12:00 - 3:00 pm or Guest Services, Deck 3, Midship after today to pre-book these experiences (nominal fee applies).

- Stem to Stern Wine Tasting -
- Cognac Tasting - Whisky Tasting -
- Tequila & Margarita Tasting -

FEATURED VARIETY ACTS THIS VOYAGE



THE VENTRILOQUISM OF KIERAN POWELL
Comical singing ventriloquist, Kieran Powell is without a doubt one of the UK's finest variety acts and one of the world's top ventriloquists. He has been described as "the act that every puppet's talking about". Over the past few years he has entertained tens of thousands of people with his truly original and highly imaginative award-winning act.



THE MAGIC & ILLUSION OF DAVID GATTI
An award winning magician, Gatti is an Italian by birth who has been hooked by illusion and wizardry since childhood. Over an illustrious career of 2 decades, the state-of-the-art magician has mesmerized many with his incredible and unique talents through several Euro TV shows and Satellite programs recently headlining his show in Las Vegas. He has performed in more than 50 countries across 4 continents. The theatrical storytelling style and incredible sleight of hands are his trademarks.



THE PERCUSSION & COMEDY OF JUNNK
JunNk use bins, bottles, ladders and drainpipes to create a lively, hilarious and utterly enthralling fast paced show, providing a fresh outlook on today's modern entertainment scene.



THE PHYSICAL COMEDY OF PETE MATTHEWS
With his infectious enthusiasm, his rapid-fire wit and highly skilled juggling, Pete will no doubt change your opinion of jugglers. Widely recognized as the UK's Premier Comedy Juggler, Pete's early career kick started in 1990 with TV appearances on "Barrymore" and "You Bet!"

FUN FOR ALL AGES HIGHLIGHTS



MICKEY'S SAIL-A-WAVE PARTY!
Mickey's Sail-A-Wave Party is a high energy, Disney Bounding, countdown celebration. Say goodbye to work and school and hello to vacation! Mickey and the gang throw a Sail-A-Wave celebration you won't forget!



A PIRATES LIFE FOR ME
Calling all Pirates, we be! If ye have an adventurous spirit or pirate savvy, come spin the "Wheel of Destiny" for a treasure trove of fun be ripe for the taking in this action packed pirate game show.



DISNEY JUNIOR PIRATE & PRINCESS DANCE PARTY
Calling all Pirates and Princesses! Come join us for a family dance party featuring music and fun activities from Jake & the Neverland Pirates and Sofia the First. Whether you favor tiaras or treasure chests, there's something for you at our Disney Junior Pirate & Princess Dance Party!



DISNEY VACATION CLUB GROUP PREVIEW
Join us for our interactive group presentation to learn about taking magical vacations year after year! For more information, please see a Disney Vacation Club Cast Member on Deck 4, Midship, or call 7-2805 from your stateroom phone.



FAMILY SUPERSTAR KARAOKE
Join your Cruise Staff and sing along to your favorite song, fun for everyone.



JACKPOT BINGO
CASH prizes and raffle prizes to be won in our family friendly Bingo sessions with your Cruise Staff. Those under the age of 18 must be accompanied by an adult to play.



PIRATES IN THE CARIBBEAN DECK PARTY
Yer Disney Friends are all set for a swashbucklin' good time! It's a Pirate Celebration, me hearties! Hoist yourself to Deck 9 to enjoy a rowdy buccaneer bash we call Pirates IN the Caribbean Deck Party. (Weather Permitting)



SALUDOS AMIGOS FIESTA
Come see what Donald and his friends are up to this time. Bring the family out to this interactive dance party featuring fun Latin music! Your family will learn to salsa, merengue and just have a Latin good time!



SO YOU THINK YOU KNOW YOUR FAMILY?
This fun-filled family game show is always full of surprises. Find out how well you know, or don't know your family!



THE INSIDE OUT GAME
Make new memories using the memories you already have. Embrace joy and play against anger, fear & disgust in this one-of-a-kind game show based on the Pixar movie Inside Out!



WAKE UP WITH DISNEY JUNIOR
What happens when you experience unlimited fun with your favorite Disney Junior shows? You get an exciting dance party designed especially for preschoolers ages seven and under.



WHO WANTS TO BE A MOUSEKETEER?
Your chance to get into the "hot seat" and win limited edition prizes. Or, play along as part of our live studio audience.

YOUTH ACTIVITIES INFO & HIGHLIGHTS



Dine & Play

As a convenience for families dining at 8:15 pm, our Youth Activities Counselors will be available at 9:30 pm at the entrance of Lumiere's, at 9:45 pm at the entrance of Animator's Palate and 10:00 pm at the entrance of Rapunzel's Royal Table to bring registered children to join the fun in Disney's Oceaneer Club and Disney's Oceaneer Lab.

Youth Activities Open House

Open House is an opportunity for all to come and participate in a variety of exciting activities and free time in the Oceaneer Club, Oceaneer Lab, Edge and Vibe throughout the cruise. During these times secured programming will still be offered in the other venue for those looking to check their children into care.

Youth Activities Venue Tour

Come and take a tour of Disney's Oceaneer Club and Disney's Oceaneer Lab. This informative tour will give you the information you need to know about our exciting spaces and activities offered for children ages 3-12. Please see your Personal Navigator or the Navigator App for times.



3 - 12 years old

STITCH'S GREAT ADVENTURE

Stitch needs your help in trying to capture ten of his lost cousins before they cause all kinds of problems on the ship!

MICKEY'S PUZZLE PLAYTIME

Come and play with Mickey & friends as they share their favorite games, puzzles and dances!

DISNEY ROYAL ACADEMY

Hear ye! Hear ye! All boys and girls are invited to become part of the Oceaneer Royal Court. Learn all about your favorite Disney Prince and Princesses, create your own royal garb and become one of the most powerful in the land. Disney Royal Academy is in session!



3 - 12 years old

SUPER SLOPPY SCIENCE

Join Professor Make-O-Mess in some of the most extreme experiments you will ever see in the world of Super Sloppy Science!

PLUTO'S PAJAMA PARTY

Bring the little ones in their pajamas but there will be anything but sleep when Pluto and friends host the ultimate slumber party!

PISTON CUP

It's Dinoco time and you're part of the pit crew! Design your own race car and see if you've got what it takes to end up in the winner's circle!



11 - 14 years old

HEROES VS. VILLAINS

Join your favorite hero or villain team on a series of activities that will take place throughout the cruise.

THAT'S HILARIOUS

Ever wanted to show off your comedy skills? Then be a part of the cast for the crazy improv show "That's Hilarious" and put on a live show for your friends.



14 - 17 years old

HAUNTED MANSION FAMILY PORTRAITS

Grim grinning ghosts come out to socialize as teens get transformed in a ghoulish photo shoot that is guaranteed to bring the spooks out for a swinging wake!

HOMECOMING

Come and join your fellow teens in our very own version of "Homecoming" and dance the night away.

BUENA VISTA THEATRE

Deck 5, Midship

FEATURE MOVIES THIS VOYAGE

FRIDAY - CIVITAVECCHIA (ROME), ITALY

6:15 pm	G	Disneynature: Penguins
8:30 pm	G	Disneynature: Penguins
10:30 pm	PG	Dumbo (2019)



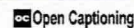
SATURDAY - SALERNO (POMPEII), ITALY

9:30 am	G	Disneynature: Penguins
11:15 am	PG-13	Avengers: Endgame
3:00 pm	PG	Dumbo (2019)
5:45 pm	PG-13	Captain Marvel
8:30 pm	PG-13	Captain Marvel
11:15 pm	PG-13	Avengers: Endgame



SUNDAY - DAY AT SEA

9:30 am	PG	Ralph Breaks the Internet
12:00 pm	PG	Dumbo (2019)
2:30 pm	PG-13	Captain Marvel
5:45 pm	PG	Ralph Breaks the Internet
8:30 pm	PG	Ralph Breaks the Internet
11:00 pm	PG-13	Captain Marvel



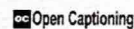
MONDAY - LA SPEZIA (FLORENCE, PISA), ITALY

11:00 am	G	Dumbo (2019)
2:00 pm	PG-13	Avengers: Endgame
5:45 pm	PG	Dumbo (2019)
8:15 pm	PG	Dumbo (2019)
11:00 pm	PG	Ralph Breaks the Internet



TUESDAY - VILLEFRANCHE, FRANCE

11:00 am	PG-13	Captain Marvel
2:00 pm	PG	Dumbo (2019)
4:45 pm	PG-13	Avengers: Endgame
8:30 pm	PG-13	Avengers: Endgame



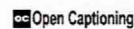
WEDNESDAY - MARSEILLE, FRANCE

8:45 am	PG	Dumbo (2019)
11:15 am	PG	Aladdin (2019)
2:00 pm	PG-13	Avengers: Endgame
5:45 pm	PG	Aladdin (2019)
8:30 pm	PG	Aladdin (2019)



THURSDAY - BARCELONA, SPAIN

9:30 am	PG	Aladdin (2019)
12:30 pm	PG	Ralph Breaks the Internet
3:15 pm	PG	Aladdin (2019)
6:15 pm	PG	Disneynature: Penguins
8:30 pm	PG	Disneynature: Penguins



FRIDAY - DAY AT SEA

11:00 am	PG	Aladdin (2019)
----------	----	----------------

Subject to change.

MORE TO ENJOY ONBOARD



NEW FALL 2020 ITINERARIES

New Fall 2020 Itineraries announced! Celebrate the seasons at sea with our Halloween on the High Seas Cruises or Very Merrytime Cruises and set sail for tropical destinations in The Bahamas, the Caribbean, Mexico, and a limited-time return to Bermuda. Visit the Disney Vacation Planning Desk, Deck 4, Midship for more information.



DISNEY VACATION CLUB® MEMBER CELEBRATION

Join us as we welcome you onboard with a fun, interactive event where you can catch the latest updates at Disney Vacation Club! Please see a Disney Vacation Club Cast Member on Deck 4, Midship or call 7-2805 from your stateroom phone for more information.

PORT SHOPPING INFORMATION

Meet Emily, your Port Shopping Guide, for hints, tips and know how when it comes to shopping ashore this cruise! Emily has great recommendations for the whole family and will show you how to maximize your time in our ports of call with money saving tips! Visit Emily at the Port Shopping Desk, Deck 3, Midship between 7:30 pm & 8:30 pm tonight for a free gift.



Connect@Sea

CONNECT@SEA

We are now offering a NEW and improved Internet service to stay connected on your cruise like no other in the industry! Internet packages range from \$0.30 per MB - \$110.00 (1000 MB package). For more information contact your Connect@Sea Expert or Guest Services onboard. Possible service interruptions due to area configuration.

CURRENCY EXCHANGE

Euros will be available for exchange at Guest Services, Deck 3, Midship, 24 hrs a day. Not all currencies will be exchanged onboard, so please check with Guest Services for further information.

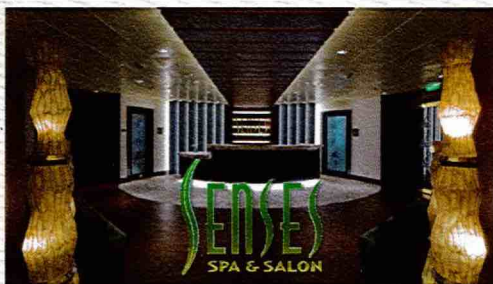
RELIGIOUS SERVICES

Groups who need a location to practice their faith may contact Guest Services for availability information.

TRANSPORTATION INFORMATION

Should you wish to purchase transportation to the Barcelona airport, kindly proceed to Guest Services on Deck 3, Midship for further assistance.

SENSES SPA & SALON



DECK 9, FORWARD Extension 7-1465

RAINFOREST

Come enjoy our serenity lounge, with heated chairs, dry sauna, aromatherapy steam rooms and rainfall, misting showers.
Couples Cruise Pass - \$193 ~ Single Cruise Pass - \$144

IONITHERMIE

Lose between 1 – 8 inches? Speed up your metabolism. Firm muscle tone. Improve appearance of cellulite. \$155/1 session or \$497/5 sessions.

ONBOARD ACUPUNCTURE

Naturally effective for pain, arthritis, sea sickness, stress, digestion, weight loss, and much more.
\$150/session or \$550/5 sessions.

ELEMIS BIOTEC

8 different Facial treatments available based on your specific concerns or needs. Technology turbo charges the concept of touch. The clinically proven result is visibly healthy, nourished and energized skin.

REJUVENATION SPA CONSULTATIONS

Ready to enhance your natural beauty? Book your free Facial Rejuvenation consultation with our Rejuvenation Doctor at the Senses Spa.

AN 18% AUTO GRATUITY IS ADDED TO ALL SENSES SPA SERVICES.

MERCHANDISE SHOPPING



DECK 4, FORWARD

THE CROWN JEWELRY

Visit The Crown Jewelry, located on Deck 4, Aft, to discover stylish timepieces and fine jewelry. Discover the Crown of Light Diamonds, Safi Kilima Tanzanites and John Hardy's handcrafted jewelry, as well as luxury watches by Hublot and Breitling.

HELPFUL SHOPPING TIP

While shopping onboard, you may collect your items from both stores before proceeding to checkout at any register. No need to have to wait in line in each store to pay for your items separately! Mickey's Mainsail and White Caps, Deck 4, Forward.

BIBBIDI BOBBIDI BOUTIQUE

A makeover fit for a princess! Fairy Godmothers-in-Training are ready with magic and pixie dust to give your Prince and Princess the transformation of a lifetime. Make your reservations by visiting Bibbidi Bobbidi Boutique, Deck 10, Forward, Port Side, or dialing extension 7-1492. Limited space available.

DUE TO PORT REGULATIONS, WHEN THE SHIP IS DOCKED, THE STORES WILL REMAIN CLOSED.

SHUTTERS PHOTO GALLERY



DECK 4, AFT

WELCOME ABOARD RAFFLE

Your embarkation photos will be available for viewing at 6:30pm. Visit Shutters on Deck 4 Aft and drop your raffle coupon for a chance to win a 10 Digital Photo package with a \$149.95 value.

OUR CRUISE PHOTOS DIGITAL!

Ask a friendly photographer about our Cruise digital Photos! And the incredible value of an All Inclusive digital photo package, which includes all of your stateroom's photos. Visit Shutters today as supplies are limited. *Terms and conditions apply.

PRIVATE STUDIO PORTRAITURE

Book our exclusive and contemporary Private Studio experience today and capture these memories. No obligation to purchase. Black and White only.

PHOTO BOOK

Turn your magical vacation memories into an impressive keepsake, a personal one of a kind Photo Book. Fill every page with memories of your cruise vacation. Orders close at 10:00 pm on the last day of the cruise.

PHOTOS ARE AVAILABLE FOR VIEWING ON OUR INTERACTIVE PHOTO KIOSKS APPROXIMATELY FIVE HOURS AFTER BEING TAKEN AND ARE ONLY AVAILABLE FOR PURCHASE DURING THIS CRUISE.

IMPORTANT INFORMATION

Security Notice/Unaccompanied Minor Ashore
All Guests (including children) who wish to disembark or embark the ship are required to present their Key to the World card at the gangway. A photo ID is also required for those Guests who are 18 years of age or older. Guests under the age of 18 are required to have a Parent, Guardian or other responsible adult complete the "Traveling with Minors" section of "My Online Check-In" prior to sailing or sign an authorization form at the Guest Services Desk if they wish to go ashore unaccompanied or with any adult from another stateroom.

Insect Repellent Advisory
The Centers for Disease Control and Prevention recommends wearing long-sleeved shirts and pants along with insect repellent to protect against mosquito bites and related illnesses when going ashore. Complimentary insect repellent is available on the pier as you exit the ship. Insect repellent is also available for purchase in White Caps. When using both sunscreen and insect repellent, use sunscreen first and apply insect repellent on top of sunscreen.

Corridor Quiet Hours
As a courtesy to all our Guests, please recognize quiet hallway hours from 10:00 pm til 8:00 am.

No Reserved Seats Policy
As a courtesy to all of our Guests, we kindly advise that the saving of seats is not permitted in the Walt Disney Theatre, and the saving of the sun loungers is not permitted on Deck 9 and 10. Items left unattended will be returned to lost and found at Guest Services, Deck 3 Midship.

Cold and Flu Reminder
Please wash hands frequently and thoroughly, particularly before meals. Contact the Health Center by dialing 7-1927, should anyone in your party become ill.

Inclement Weather
For the safety of all Guests, outdoor events may be changed due to unforeseen weather conditions.

Smoking
For the comfort of our Guests, the following areas are designated as smoking areas:
*Deck 9, Forward, Port Side by
*Deck 4, Starboard side from 6:00 pm to 6:00 am only (all of Deck 4 is non-smoking from 6:00 am to 6:00 pm)
Smoking is prohibited inside all Guest staterooms and on stateroom verandahs. Guests found smoking in their staterooms or on their verandahs will be charged a \$250 stateroom recovery fee. Electronic cigarettes may only be used in designated smoking areas.

Walt Disney Theatre
Theatrical performances may use artificial fog, strobe lights, pyrotechnics and other special effects. For the safety of our performers and the comfort of those around you, the use of any photography, video recording device or any electronic equipment is prohibited.
Verandah Safety
Please do not leave any personal items on your verandah that may be blown overboard or present a fire hazard if left unattended. Do not throw anything over the ship's side. Guests should not sit, lean or climb on the railing or leave children unattended on the verandah. Do not open the verandah and stateroom doors simultaneously as this may create a wind effect and could cause the doors to slam unexpectedly.

WELCOME ABOARD!



Key to the World Card Information



In case of an emergency, your lettered Assembly Station is indicated here.


- Your dining time and table number for the cruise are located here.
- Dining locations and rotation are indicated by letters under your dinner time.
 L - Lumiere's, Deck 3, Midship
 A - Animator's Palate, Deck 4, Aft
 R - Rapunzel's Royal Table, Deck 3, Aft



FAMILY DECK PARTY!

Mickey's Sail-A-Wave Deck Party is a high energy, Disney Bounding, countdown celebration happening atop the Disney Magic! Wave goodbye to work and school, and hello to vacation! Mickey and the gang throw a Sail-A-Wave celebration you won't forget!!

Deck 9 Stage, Midship,
4:30 pm

Afternoon	2:00	2:15	2:30	2:45	3:00	3:15	3:30	3:45	4:00	4:15	4:30	4:45	5:00	5:15	5:30	5:45	6:00	6:15	6:30	6:45	7:00
FUNNEL VISION	Pixar Short Films (G) Funnel Vision			Port Shopping Talk Buena Vista Theatre						Mandatory Guest Assembly Drill 4:15 pm (All Guests must attend) All ship services will be suspended during this time. Refer to the posted drill instructions on the back of your stateroom door prior to heading to Deck 4. Please bring your Key to the World Card. You will not need your life jacket for the Guest Assembly Drill.  Your Assembly Station is indicated on your Key To The World card.			Mickey's Sail-A-Wave Funnel Vision			Cars (G) Open Captioning Funnel Vision					
BUENA VISTA THEATRE													Daisy Lobby Atrium (P)			Donald Lobby Atrium (P)			Disneyature: Penguins (G) Duration: 1 Hour 16 Minutes		
CHARACTERS													Sail-A-Wave Party! Deck 9 Stage			Chilled Sounds with The Dreamers Lobby Atrium			Be Our Guest Welcome Aboard Show Walt Disney Theatre		
FUN FOR ALL AGES	Walking Ship Tour Preludes			Walking Ship Tour Preludes			Youth Activities Tour Disney's Oceaneer Lab									Smooth Sounds with O&A Duo Promenade Lounge					
ADULTS	Spa Open House Senses Spa & Salon			Spa Raffle Senses Spa & Salon						Footprint Analysis Senses Spa & Salon						Music and Martinis with Joe Creamer Keys					
VIBE 14-17 YEARS OLD	Youth Activities Open House & Registration									Youth Activities Open House			Open for Teens								
EDGE 11-14 YEARS OLD	Youth Activities Open House & Registration									Open House Tween You and I			Youth Activities Open House			Open for Tweens					
OCEANEER LAB 3-12 YEARS OLD	Open for Youth Activities Registration			Youth Activities Tour						Youth Activities Open House			Game Challenge			Meet Your Counselors					
OCEANEER CLUB 3-12 YEARS OLD	Open for Youth Activities Registration			Youth Activities Tour						Youth Activities Open House			Youth Activities Open House			Craft Corner					



Evening	7:15	7:30	7:45	8:00	8:15	8:30	8:45	9:00	9:15	9:30	9:45	10:00	10:15	10:30	10:45	11:00	11:15	11:30	11:45	12:00	12:15
FUNNEL VISION	Cinderella (2015) (PG)			Ratatouille (G)																	
BUENA VISTA THEATRE				Disneyature: Penguins (G) Duration: 1 Hour 16 Minutes						Dumbo (2019) (PG)											
CHARACTERS	Minnie Lobby Atrium (P)			Mickey Lobby Atrium (P)			Minnie Lobby Atrium (P)			Mickey Lobby Atrium (P)											
FUN FOR ALL AGES	Who Wants to be a Mouseketeer? D Lounge			Be Our Guest - Welcome Aboard Show Walt Disney Theatre			Disney Disco D Lounge			Game Show: The Wheel D Lounge			Family Superstar Karaoke D Lounge								
ADULTS	Music Trivia O'Gills Pub			Pub Quiz O'Gills Pub			Cruise Staff DJ Fathoms			Frozen Phrases Fathoms			Match Your Mate Fathoms			Cruise Staff DJ Fathoms					
VIBE 14-17 YEARS OLD	Cards Tournament			Profiles			Your Pick: Games Galore			Ice Breakers			Meet Your Counselors			Heroes and Villains					
EDGE 11-14 YEARS OLD	Wii Challenge			Four Square			Craft Corner			Profiles			Meet Your Counselors			Ice Breakers					
OCEANEER LAB 3-12 YEARS OLD	Explore the Lab!			Super Sloppy Science			GAGA Ball			Ice Breakers			Mad Hatter's Unbirthday Party			Wii Challenge					
OCEANEER CLUB 3-12 YEARS OLD	Explore the Club			Toy Story Boot Camp			Memory Wall			Human Bingo			Four Square			Dance Party					

DRINK OF THE DAY
Bay Breeze (Alcoholic)
Bora Shake (Non-Alcoholic)

FOLD

Fold along the dotted lines and take me with you so you don't miss any of the fun!

FOLD

YOUTH ACTIVITIES OPEN HOUSE
A non-secured program with activities for families, adults and children to enjoy together.



Be our Guest!

WELCOME ABOARD SHOW

WALT DISNEY THEATRE

Deck 4, Forward
6:30 pm & 8:45 pm

As a courtesy to all Guests, we kindly advise that the saving of seats is not permitted in the Walt Disney Theatre.

Assistance is available at the entrance to the Walt Disney Theatre 30 minutes prior to show time.

Character Meet & Greet Ticket Distribution

Port Adventures Desk, Deck 3, Midship - 12:00 pm - 2:00 pm

The following appearances require a reservation. Space is limited. For Guests who did not book online, a limited number of reservations are available for

- Princess Gathering
- Frozen Gathering
- Canvas & Cocktails

Character Appearances

MICKEY'S SAIL-A-WAVE PARTY!

Deck 9 Stage - 4:45 pm

DAISY DUCK

Lobby Atrium (P) - 5:30 pm

DONALD DUCK

Lobby Atrium (P) - 6:00 pm

MINNIE MOUSE

Lobby Atrium (P) - 7:45 pm & 9:45 pm

MICKEY MOUSE

Lobby Atrium (P) - 8:15 pm & 10:15 pm



(S) Starboard Side - (P) Port Side

For detailed character appearances refer to the characters tab on the Disney Cruise Line App, or the digital character board in the Lobby Atrium.

Lines close 15 minutes after advertised start time.

SHIP DIRECTORY

YOUTH ACTIVITIES

DISNEY'S OCEANEER CLUB	DECK 5, MID	12:00 PM - 3:45 PM 4:30 PM - 12:00 AM
DISNEY'S OCEANEER LAB	DECK 5, MID	12:00 PM - 3:45 PM 4:30 PM - 12:00 AM
EDGE	DECK 9, MID	12:00 PM - 3:45 PM 4:30 PM - 12:00 AM
IT'S A SMALL WORLD NURSERY	DECK 5, AFT	12:00 PM - 3:45 PM 4:30 PM - 11:30 PM
VIBE	DECK 10, MID	12:00 PM - 3:45 PM 4:30 PM - 12:00 AM

POOLS

*Children under 12 years of age must have adult supervision in all pools.

AQUADUNK	DECK 10, MID	12:00 PM - 3:30 PM 6:00 PM - 8:00 PM
AQUALAB	DECK 9, AFT	12:00 PM - 3:30 PM 5:00 PM - 8:00 PM
GOOFY'S POOL	DECK 9, MID	12:00 PM - 3:30 PM 6:00 PM - 8:00 PM
NEPHEWS' SPLASH ZONE	DECK 9, AFT	12:00 PM - 3:30 PM 5:00 PM - 6:00 PM
QUIET COVE POOL (18+)	DECK 9, FWD	12:00 PM - 11:00 PM
TWIST 'N' SPOUT	DECK 9, AFT	12:00 PM - 3:30 PM 5:00 PM - 8:30 PM

Please note, "selfie sticks" are not permitted in any aquatic areas.

Complimentary pool vests are available for children to use in the pools onboard. They are located on the pool deck.

RECREATION

PORT ADVENTURES DESK	DECK 3, MID	12:00 PM - 4:00 PM 5:00 PM - 6:00 PM 7:00 PM - 8:30 PM
SENSES FITNESS CENTER (18+)	DECK 9, FWD	11:30 AM - 10:00 PM
WIDE WORLD OF SPORTS DECK	DECK 10, FWD	24 HOURS

GENERAL INFORMATION

BUENA VISTA THEATRE	DECK 5, AFT	SHOWTIMES
CONNECT@SEA DESK	DECK 3, AFT	1:00 PM - 3:30 PM 7:00 PM - 10:00 PM
DISNEY VACATION CLUB DESK	DECK 4, MID	6:00 PM - 10:00 PM
DISNEY VACATION PLANNING	DECK 4, MID	7:30 PM - 8:30 PM
FUNNEL VISION	DECK 9, MID	SHOWTIMES
GUEST SERVICES	DECK 3, MID	24 HOURS
HAIR BRAIDING	DECK 9, MID	
MEDICAL HEALTH CENTER	DECK 1, FWD	4:30 PM - 7:00 PM
PORT SHOPPING DESK	DECK 3, MID	7:00 PM - 8:30 PM
PRELUDES	DECK 4, FWD	SHOWTIMES
SENSES SPA AND SALON	DECK 9, FWD	11:30 AM - 10:00 PM
SHUTTERS PHOTO GALLERY	DECK 4, AFT	6:00 PM - 10:30 PM
WALT DISNEY THEATRE	DECK 4, FWD	SHOWTIMES

SHOPPING

BIBBIDI BOBBIDI BOUTIQUE	DECK 10, FWD	12:00 PM - 3:00 PM 5:00 PM - 9:00 PM
MICKEY'S MAINSAIL	DECK 4, FWD	6:00 PM - 10:00 PM
SEA TREASURES	DECK 3, FWD	6:00 PM - 10:00 PM
THE CROWN JEWELRY	DECK 4, AFT	6:00 PM - 10:00 PM
WHITE CAPS	DECK 4, FWD	6:00 PM - 10:00 PM

DUE TO PORT REGULATIONS, WHEN THE SHIP IS DOCKED, THE STORES MUST REMAIN CLOSED.

EVENING ATTIRE | Cruise Casual

DINING & LOUNGES

LUNCH

CABANAS	DECK 9, AFT	12:00 PM - 3:00 PM
DAISY'S DE LITES	DECK 9, AFT	12:00 PM - 3:30 PM 4:15 PM - 6:00 PM
DUCK-IN DINER	DECK 9, AFT	12:00 PM - 3:30 PM 4:15 PM - 6:00 PM
LUMIERE'S	DECK 3, MID	11:45 AM - 1:45 PM
PINOCCHIO'S PIZZERIA	DECK 9, MID	12:00 PM - 3:30 PM 4:15 PM - 6:00 PM

DINNER

ANIMATOR'S PALATE	DECK 4, AFT	6:00 PM & 8:30 PM
DUCK-IN DINER	DECK 9, AFT	6:00 PM - 10:00 PM
LUMIERE'S	DECK 3, MID	6:00 PM & 8:30 PM
PALO (18+) (FOR RESERVATIONS CALL 7-6843)	DECK 10, AFT	6:00 PM - 8:30 PM
RAPUNZEL'S ROYAL TABLE	DECK 3, AFT	6:00 PM & 8:30 PM

LATE NIGHT SNACKS

O'GILLS PUB	DECK 3, FWD	10:45 PM - 11:45 PM
PINOCCHIO'S PIZZERIA	DECK 9, MID	9:30 PM - 12:00 AM
PROMENADE LOUNGE	DECK 3, AFT	10:45 PM - 11:45 PM

ADDED FEATURES

EYE SCREAM	DECK 9, AFT	12:00 PM - 3:30 PM 4:15 PM - 11:00 PM
BEVERAGE STATION	DECK 9, AFT	24 HOURS
ROOM SERVICE	DIAL 7-4330	24 HOURS

ENTERTAINMENT - LOUNGES - BARS

Adults must be 21 and older to consume alcoholic beverages.

AFTER HOURS	DECK 3, FWD	(AFTER 9:00 PM, ADULTS ONLY)
COVE CAFE (18+)	DECK 9, MID	11:45 AM - 12:00 AM
D LOUNGE	DECK 4, MID	SHOWTIMES
FATHOMS (18+ AFTER 9:00 PM)	DECK 3, FWD	7:30 PM - 8:30 PM 9:45 PM - 1:00 AM
FROZONE TREATS	DECK 9, AFT	11:45 AM - 6:00 PM
KEYS (18+)	DECK 3, FWD	7:30 PM - 12:30 AM
O'GILLS PUB (18+ AFTER 9:00 PM)	DECK 3, FWD	12:00 PM - 3:30 PM 7:30 PM - 12:30 AM
PINOCCHIO'S	DECK 9, MID	11:45 AM - 12:00 AM
PRELUDES	DECK 4, FWD	SHOWTIMES
PROMENADE LOUNGE	DECK 3, AFT	11:45 AM - 12:00 AM
SIGNALS (18+)	DECK 9, FWD	11:45 AM - 11:00 PM

Public Health Advisory: Consuming raw or undercooked meats, poultry, seafood, shellfish, or eggs may increase your risk for foodborne illness, especially if you have certain medical condition.



Explore and more with our carefully selected Port Adventures. Pass by the Port Adventures Desk, Deck 3, Midship to find out more.

IMPORTANT NUMBERS

Fire/Security:	7-3001
Medical EMERGENCY:	7-3000
Health Center:	7-1927