

# VOYAGE NAVIGATOR



MONDAY  
MAY 27, 2019

TO

MONDAY  
JUNE 3, 2019

## CRUISE HIGHLIGHTS

### MONDAY

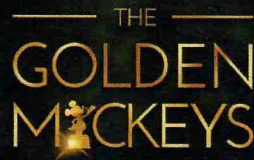
VANCOUVER, CANADA  
Port Departure: 5:00 pm  
All Aboard: 4:00 pm  
Attire: Cruise Casual



**SHOWTIME: MICHAEL HARRISON**  
Walt Disney Theatre  
6:15 pm & 8:30 pm

### TUESDAY

DAY AT SEA  
Attire: Formal



**THE GOLDEN MICKEYS**  
Walt Disney Theatre  
6:15 pm & 8:30 pm

### WEDNESDAY

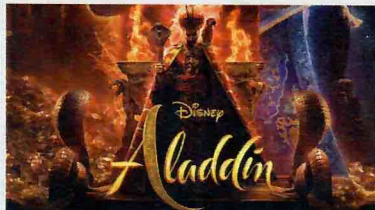
DAWES GLACIER, ALASKA  
Attire: Cruise Casual



**SHOWTIME: KYLE KNIGHT & MISTIE**  
Walt Disney Theatre  
6:15 pm & 8:30 pm

### THURSDAY

SKAGWAY, ALASKA  
All Ashore: 7:15 am  
All Aboard: 8:00 pm  
Attire: Cruise Casual



**ALADDIN (2019) (PG)**  
Walt Disney Theatre  
5:15 pm & 8:30 pm

### FRIDAY

JUNEAU, ALASKA  
All Ashore: 6:45 am  
All Aboard: 4:45 pm  
Attire: Semi Formal



**FROZEN, A MUSICAL SPECTACULAR**  
Walt Disney Theatre  
6:00 pm & 8:30 pm

### SATURDAY

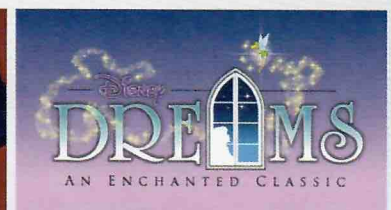
KETCHIKAN, ALASKA  
All Ashore: 11:15 am  
All Aboard: 7:45 pm  
Attire: Cruise Casual



**SHOWTIME: MICHAEL HOLLY**  
Walt Disney Theatre  
6:15 pm & 8:30 pm

### SUNDAY

DAY AT SEA  
Attire: Cruise Casual



**DISNEY DREAMS: AN ENCHANTED CLASSIC**  
Walt Disney Theatre  
6:00 pm & 8:30 pm

Subject to change.

## WELCOME ABOARD!

### YOUR STATEROOM & LUGGAGE

Staterooms will be ready at 1:30 pm. To allow your Stateroom Host/ess time to prepare your room, please do not remove the blue stanchion straps. Stateroom hosts will deliver luggage throughout the day until 5:30 pm.

### STATEROOMS WITH BUNK BEDS

Bunk beds are recessed into the ceiling and will be prepared during evening turndown service by your Stateroom Host/ess.

### STATEROOM SAFE

Each stateroom is equipped with a secured storage safe. Instructions for use are located on the safe.

### TO CHANGE DINING ASSIGNMENT

Requests for different seating times will be taken today:

- 12:30 pm - 3:30 pm; Book in Azure, Deck 3, Forward or please dial 7-10891 and leave a voicemail.

### PALO DINING RESERVATIONS

Reservations are required and will be taken on a first come basis today:

- 12:30 pm - 3:30 pm; Book in Azure, Deck 3, Forward or please dial 7-6843 and leave a voicemail.

**Adult Exclusive Dining Opportunity!** Guests are invited to make 2 dinner reservations at our adult-exclusive restaurant, Palo. This includes one reservation on embarkation evening and one more on another night of the cruise. Reservations are subject to availability and a specialty dining charge will apply.

### DINNER

5:45 pm - First seating 8:15 pm - Second seating

Please check your Key To The World Card for details of your dining rotation, and bring them to your specific dining location. There is no need to wait in line prior to dinner. Dining Rooms open at designated seating times and your table is reserved each night of your cruise.

AP = Animator's Palate, Deck 4, Aft TR = Triton's, Deck 3, Midship TP = Tiana's Place, Deck 3, Aft

## DOWNLOAD THE DISNEY CRUISE LINE NAVIGATOR APP

BEFORE YOU SAIL AWAY

Explore all that's going on aboard your Disney cruise.



Tap the Disney Cruise Line logo to view your Personal Itinerary.

Send messages to your friends and family on the ship.

Your Personal Itinerary includes all activities booked at home and onboard.



Create the most memorable experiences during your Disney Cruise Line vacation with Port Adventures! Our Port Adventures are designed for you to see the best our ports have to offer. Stop by the Port Adventures Desk, Deck 3, Midship where our friendly team will be happy to assist you plan your adventure!

There is an adventure for everyone on your Disney Wonder® vacation.

IMPORTANT NUMBERS

Fire/Security: 7-3001

Medical Emergency: 7-3000

Health Center: 7-1927



## ADULT ACTIVITY HIGHLIGHTS



### 1820 SOCIETY (GUESTS 18-20 YEARS ONLY)

1820 Society is an exclusive option for young adult Guests. Come meet fellow passengers and learn about the excellent activities that the Disney Wonder offers to create the perfect cruise experience.



### 80'S FLASHBACK

The 80's are back! Join your Cruise Staff team, in testing your 80's knowledge in this high energy 80's revival.



### ANYONE CAN COOK

Every Chef has a specialty, and ours is no exception. Get a taste of perfection with each recipe.

### CRUISIN' SOLO GATHERING

Single, single parent or just traveling alone? Join your Cruise Staff for an informal gathering.



### MATCH YOUR MATE

It's time to play everyone's favorite couples game show, Match Your Mate!



### POPI

Have you been told you are full of useless information about pop culture? If the answer is "Yes", then you have what it takes to play the high energy game show all about the world of Pop!



Senses Spa & Salon has a variety of seminars and fitness classes available throughout the cruise. Pamper yourself with therapeutic spa treatments of heat, steam, rain and water in luxurious and tranquil private rooms. Deck 9, Forward.

### BEVERAGE SEMINARS

Your Beverage team has a host of tastings and seminars to entertain and educate you. Stop by Azure, Deck 3, Forward to pre-book these experiences (nominal fee applies).

Mixology - Stem to Stern Wine Tasting - Martini Tasting - Champagne Tasting  
Rum Tasting - Cognac Tasting - Whisky Tasting - Beer Tasting - Mojito & Caipirinha Tasting  
Tequila & Margarita Tasting - Chocolate & Liquor Tasting - Bourbon Tasting

## FEATURED VARIETY ACTS THIS VOYAGE



### THE VENTRILOQUISM & COMEDY OF MICHAEL HARRISON

Michael Harrison is an extraordinarily talented ventriloquist, puppeteer and comedian. He has worked alongside numerous acts from The Muppets to Boyz 2 Men. Michael wrote and starred in the award winning television show, "Kids in the Firehall," which was awarded the prestigious Bronze Apple Award. Recently, he took his talents to a new level and appeared on "America's Got Talent" & finished as one of the finalists.



### THE MAGIC & ILLUSION OF KYLE KNIGHT & MISTIE

Las Vegas illusionists Kyle and Mistie Knight have appeared on TV's "Fool Us" and "Now You See It," and were the grand-prize winners on the magician competition show "Wizard Wars." Together they perform their magic with a bold and modern style, and allow their audience to get up close and involved in ways they've never seen before.



### THE PHYSICAL COMEDY OF HEATH HYCHE

Heath uses stand-up comedy, quick-change costumes, original music, sound effects, and cleverly constructed props and scenery to take the audience on a journey through his vivid imagination and meet a cavalcade of manic characters. Heath Hyche's TV credits include "The Tonight Show with Jay Leno", "Last Comic Standing", and two seasons on "Blue Collar TV" alongside Jeff Foxworthy, Larry the Cable Guy, and Bill Engvall. On the big screen, Heath appeared in the films "Man on the Moon" with Jim Carrey and Will Ferrell's "Talladega Nights".



### THE PHYSICAL COMEDY OF MICHAEL HOLLY

Michael Holly began his performing days on the cobbled streets of Fantasyland at Disneyland in 1985 and since then has been the comedy star of a dozen Las Vegas Shows including Vegas-The Show at Planet Hollywood, V-The Ultimate Variety Show at the Venetian, Les Folies Bergere at The Tropicana and has the highest rated one man comedy variety show in Las Vegas, his own, "Michael Holly's Off The Wall Comedy Hour".

## FUN FOR ALL AGES HIGHLIGHTS



### MICKEY'S SAIL-A-WAVE PARTY!

Mickey's Sail-a-Wave Deck Party is a high energy, Disney Bounding, countdown celebration happening atop the Disney Wonder! Wave goodbye to work & school, and hello to vacation! Mickey and the gang throw a Sail-a-Wave celebration you won't forget!!



### DISNEY JUNIOR PIRATE & PRINCESS DANCE PARTY

Calling all Pirates and Princesses! Come join us for a family dance party featuring music and fun activities from Jake & the Neverland Pirates and Sofia the First. Whether you favor tiaras or treasure chests, there's something for you at our Disney Junior Pirate & Princess Dance Party!



### DISNEY VACATION CLUB GROUP PREVIEW

Join us for our interactive group presentation to learn about taking magical vacations year after year! For more information, please see a Disney Vacation Club Cast Member on Deck 4, Midship, or call 7-2805 from your stateroom phone.



### FAMILY SUPERSTAR KARAOKE

Join your Cruise Staff and sing along to your favorite song, fun for everyone.



### FREEZING THE NIGHT AWAY WITH ANNA, ELSA AND FRIENDS!

It's a Big Summer Blowout! Come join some of your favorite Frozen friends and Arendelle's royal party planners on Deck 9 for the best deck celebration on this side of the fjord! (Weather Permitting)



### FROZEN PHRASES

Contestants attempt to guess a series of words or phrases based on descriptions given to them by their teammates as they race against the clock in this Frozen themed game show.

### GAME SHOW: THE FEUD

"Survey Says" you'll have a fantastic time with our version of a classic game.

### GAME SHOW: THE WHEEL

A special version of this popular TV game show.



### JACK-JACK'S INCREDIBLE DIAPER DASH

Calling all baby cruisers! It's time to take to the mat to see who's the fastest crawler of the seven seas! Register your baby 15 minutes prior to the big race.



### JACKPOT BINGO

CASH prizes and raffle prizes to be won in our family friendly Bingo sessions with your Cruise Staff. Those under the age of 18 must be accompanied by an adult to play!



### MICKEY 200

Don't eat your vegetables... race them in this wild and wacky charge to the finish line. May the best veggie win! (Limited Availability)



### MICKEY MANIA

Join us for the ultimate test of your Disney knowledge as we play our live, interactive game show, that's "insania!"



### OAKEN'S MAYPOLE SWIRL AND TWIRL

Hoo-Hoo! Family! Join Oaken's cousins for a Midsummer celebration. Take a swirl and a twirl around the maypole and learn some traditional songs and dances, yah?



### SO YOU THINK YOU KNOW YOUR FAMILY?

This fun-filled family game show is always full of surprises. Find out how well you know, or don't know your family!



### WHO WANTS TO BE A MOUSEKETEER?

Your chance to get into the "hot seat" and win limited edition prizes. Or, play along as part of our live studio audience.



### 'TIL WE MEET AGAIN

The world-famous Disney Characters and some of your new friends from the Disney Wonder stage shows bid you a charming farewell.

Please check the Disney Cruise Line App or Personal Navigator for all times and locations.



# YOUTH ACTIVITIES INFO & HIGHLIGHTS



## Dine & Play

As a convenience for families dining at 8:15 pm, our Youth Activities counselors will be available at the entrance of each restaurant to bring registered children to join the fun in the Youth Activities areas at the following times:

9:15 pm at the entrance of Triton's,  
9:30 pm at the entrance of Tiana's Place and Animator's Palate.

## Pre-School Fun

Disney's Oceaneer Club is reserved for only those between 3-5 years of age. This is a time for them to become acclimated to Disney's Oceaneer Club, make new friends and join in on a lot of fun-filled programs and activities. Please note after Pre-School Fun has concluded, Disney's Oceaneer Club will be open for Secured Programming for ages 3-12.

## Youth Activities Open House

Open House is an opportunity for all to come and participate in a variety of exciting activities and free time in the Oceaneer Club, Oceaneer Lab, Edge and Vibe throughout the cruise. During these times secured programming will still be offered in the other venue for those looking to check their children into care.

## Youth Activities Venue Tour

Come and take a tour of Disney's Oceaneer Club and Disney's Oceaneer Lab. This informative tour will give you the information you need to know about our exciting spaces and activities offered for children ages 3-12. Please see your Personal Navigator or the Navigator App for times.



3 - 12 years old

## JOIN THE LION GUARD

Harness your inner animal and find out if you have what it takes to join the Lion Guard!

## MILES' COSMIC EXPLORER ADVENTURES

Miles needs your help! Gadfly has stolen his tech, and it's up to you to solve clues and puzzles in order to return the missing items back to Miles.

## SOFIA THE FIRST - MAGICAL STORYTELLING

You're invited to take part in Sorcery 101 at the Royal Prep Academy, where you'll learn a few spells and help retell one of Sofia's many magical adventures.



3 - 12 years old

## ALOHA LUAU

It's party time, Hawaiian style! Come join us for a Luau experience and learn how to dance like Lilo & Stitch.

## ANYONE CAN COOK: COOKIES

From our galley to yours. Join our chefs as they show you how to prepare delicious cookies.

## LAVA FLOW

Build your own volcano and watch it erupt as you learn about the physics of volcanoes.



11 - 14 years old

## HEROES AND VILLAINS

Join your favorite hero or villain team on a series of activities that will take place throughout the cruise.

## DESCENDANT'S DEN DJ SPIN OFF

Photo Booth! DJ lessons! Fun games! Sing! Laugh! Dance! It's the next generation of fun - Descendants style!



14 - 17 years old

## GOTCHA

You will try to eliminate your victim by various methods collecting points throughout the day, last person standing with the most points wins.

## THAT'S HILARIOUS

Ever wanted to show off your comedy skills? Then be a part of the cast for the crazy improv show "That's Hilarious" and put on a live show for your friends.

# BUENA VISTA THEATRE

Deck 5, Aft

## FEATURE MOVIES THIS VOYAGE

### MONDAY - VANCOUVER, CANADA

1:30 pm	PG	Ralph Breaks the Internet
5:30 pm	PG	The Incredibles 2
8:00 pm	PG	The Incredibles 2
10:30 pm	G	Disneynature: Penguins

### TUESDAY - DAY AT SEA

8:30 am	PG	Family Movie Fun Time: Ralph Breaks the Internet
2:30 pm	PG	Dumbo (2019)
5:00 pm	PG-13	Captain Marvel
8:00 pm	PG-13	Captain Marvel
10:30 pm	PG	Dumbo (2019)

### WEDNESDAY - DAWES GLACIER, ALASKA

9:00 am	PG	Dumbo (2019)	Open Captioning
11:15 am	PG	The Incredibles 2	3D
1:45 pm	PG-13	Captain Marvel	3D
4:15 pm	PG-13	Avengers: Endgame	
8:15 pm	PG-13	Avengers: Endgame	

### THURSDAY - SKAGWAY, ALASKA

12:00 pm	PG	Dumbo (2019)	
2:30 pm	PG	The Incredibles 2	3D
5:30 pm	PG	Ralph Breaks the Internet	3D
8:00 pm	PG	Ralph Breaks the Internet	3D
10:15 pm	PG	Aladdin (2019)	3D

### FRIDAY - JUNEAU, ALASKA

8:30 am	PG	Aladdin (2019)	
11:15 am	PG-13	Avengers: Endgame	Open Captioning
2:45 pm	PG	Aladdin (2019)	
5:30 pm	PG	Dumbo (2019)	
8:15 pm	PG	Dumbo (2019)	
10:30 pm	PG	Aladdin (2019)	

### SATURDAY - KETCHIKAN, ALASKA

8:30 am	PG	Aladdin (2019)	
11:15 am	PG-13	Captain Marvel	Open Captioning
2:00 pm	G	Disneynature: Penguins	
3:45 pm	PG	Aladdin (2019)	Open Captioning
6:15 pm	G	Disneynature: Penguins	
8:15 pm	G	Disneynature: Penguins	
10:00 pm	PG-13	Avengers: Endgame	3D

### SUNDAY - DAY AT SEA

9:30 am	PG	Aladdin (2019)
2:15 pm	PG	Aladdin (2019)
5:30 pm	PG	Dumbo (2019)
8:15 pm	PG	Dumbo (2019)
10:30 pm	PG	Aladdin (2019)

Subject to change.



# MORE TO ENJOY ONBOARD



## NEW SPRING 2020 ITINERARIES

New Spring 2020 Itineraries announced! Experience sailings to the Caribbean, the Bahamas, Mexico, and Hawaii with your family! And for the very first time, sail from New Orleans to the Caribbean or Bahamas on Disney Wonder. Visit Disney Vacation Planning, Deck 4, Midship for more information. Disney Vacation Planning tends to get busy on the last day of sailing. Don't miss the opportunity to plan your next Disney vacation.

## DISNEY VACATION CLUB® GROUP PREVIEW

Join us for our interactive group presentation to learn about taking magical vacations year after year! For more information, please see a Disney Vacation Club Cast Member on Deck 4, Midship, or call 7-2805 from your stateroom phone.

## PORT SHOPPING INFORMATION

Come and meet Violet, your Port Shopping Guide, at the Port Shopping Desk, Deck 3, Midship from 7:00 pm - 8:30 pm for a complimentary charm. Don't miss the Port Shopping Talk on Day at Sea 1 in the Buena Vista Theatre, Deck 5, Aft, at 11:00 am for all of your Port Shopping information and to enter a raffle for a chance to win a Diamond Pendant. Tune into Channel 24-6 all cruise long for more Port Shopping information.

SHOPPING  
Ashore

## Connect@Sea

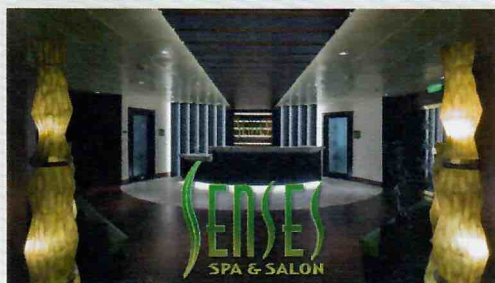
### FREE INTERNET EMBARKATION DAY SPECIAL

Sign up for a free 50 MB Internet package today and enjoy it throughout the cruise! This offer is only available from noon to midnight on the day your cruise begins. On your wireless device, simply find the "DCL-Guest" Wi-Fi Network, go to [www.dclguest.com](http://www.dclguest.com) to create an account, and get your free 50 MB of data to start sharing your memories even before you leave port! If you have any questions, ask our Connect@Sea Expert located at Deck 3, Aft. No purchase necessary. The free 50 MB package can only be used for the duration of the cruise. Only one free package per stateroom, but everyone can share it. Unused data from a package will not be reimbursed and it is non-transferable between voyages or ships.

### RELIGIOUS SERVICES

Groups who need a location to practice their faith may contact Guest Services for availability information.

## SENSES SPA & SALON



DECK 9, FORWARD  
Extension 7-1465

### RAINFOREST

Come enjoy our serenity lounge, with heated chairs, dry sauna, aromatherapy steam rooms and rainfall, misting showers. 7 Day Pass: Couples \$193 Single \$144

### REJUVENATION SPA CONSULTATIONS

Ready to enhance your natural beauty? Book your free Facial Rejuvenation consultation with our Rejuvenation Doctor at the Senses Spa.

### ONBOARD ACUPUNCTURE

Acupuncture is a safe and effective medicine that allows your body to heal itself, and is effective for various health conditions. See your onboard Acupuncturist for your free consultation.

### IONITHERMIE

Lose between 1 - 8 inches. Speed up your metabolism. Firm muscle tone. Improve appearance of cellulite. \$155/1 session or \$299/3 sessions.

### BIOTEC FACIALS

Our revolutionary facials address skin tone, blemishes and fine lines to transform the texture of the skin. The ultrasonic peel, massage and light therapy deliver a complexion that has never been smoother.

**AN 18% AUTO GRATUITY IS ADDED TO ALL SENSES SPA SERVICES.**

## MERCHANDISE SHOPPING



DECK 4, FORWARD

### DISNEY CRUISE LINE ALASKAN SOUVENIRS

Discover a variety of merchandise to commemorate your trip for the Alaskan season, including apparel, accessories, souvenirs, plush, drink ware and more. Sea Treasures, Deck 3, Forward.

### EFFY JEWELRY SPECIAL OFFER

The stylish Effy jewelry pieces are designed to allow you the opportunity to mix and match to create a look that's all your own. Receive a complimentary Effy scarf and jewelry pouch with each Effy jewelry purchase. While supplies last. White Caps, Deck 4, Forward.

### STYLISH TAG HEUER WATCHES

TAG Heuer is one of the largest and fastest growing Swiss brands and is in a constant quest for innovation and high precision. Stop by White Caps today where you'll discover the luxury and style of a TAG Heuer watch. White Caps, Deck 4, Forward.

### BIBBIDI BOBBIDI BOUTIQUE

A makeover fit for a princess! Fairy Godmothers-in-Training are ready with magic and pixie dust to give your Prince and Princess the transformation of a lifetime. Make your reservations by visiting Bibbidi Bobbidi Boutique, Deck 10, Forward, Port Side, or dialing extension 7-10878. Limited space available.

## SHUTTERS PHOTO GALLERY



DECK 4, AFT

### WELCOME ABOARD RAFFLE

View your embarkation photos in Shutters, Deck 4, Aft and enter our raffle for a chance to win a 10 Digital Photos valued at \$149.95. Winner must be present at the 10:00 pm drawing in Shutters, Deck 4, Aft. \*Terms and conditions apply. Visit Shutters on Deck 4, Aft for more information.

### GET THE PICTURE!

Take home all your stateroom photos from this cruise on a USB! Terms and conditions apply. Visit Shutters on Deck 4, Aft and ask your friendly Shutters staff for more information. Get The Picture! Hurry! Order yours now.

### PHOTO BOOK

Turn your magical vacation memories into an impressive keepsake with a personalized PhotoBook. Order by 9:30 pm on the final night of the cruise.

### PRIVATE STUDIO PORTRAITURE

Book our exclusive and contemporary Private Studio experience today and capture these memories. No obligation to purchase. Black and White only.

**PHOTOS ARE AVAILABLE FOR VIEWING ON OUR INTERACTIVE PHOTO KIOSKS APPROXIMATELY FIVE HOURS AFTER BEING TAKEN AND ARE ONLY AVAILABLE FOR PURCHASE DURING THIS CRUISE.**

## IMPORTANT INFORMATION

**Security Notice/Unaccompanied Minor Ashore**  
All Guests (including children) who wish to disembark or embark the ship are required to present their Key to the World card at the gangway. A photo ID is also required for those Guests who are 18 years of age or older. Guests under the age of 18 are required to have a Parent, Guardian or other responsible adult complete the "Traveling with Minors" section of "My Online Check-In" prior to sailing or sign an authorization form at the Guest Services Desk if they wish to go ashore unaccompanied or with any adult from another stateroom.

**Inclement Weather**  
For the safety of all Guests, outdoor events may be changed due to unforeseen weather conditions.

**Corridor Quiet Hours**  
As a courtesy to all our Guests, please recognize quiet hallway hours from 10:00 pm til 8:00 am.

**Cold and Flu Reminder**  
Please wash hands frequently and thoroughly; particularly before meals. Contact the Health Center by dialing 7-1927, should anyone in your party become ill.

**Smoking**  
For the comfort of our Guests, the following areas are designated as smoking areas:  
\*Deck 9, Forward, Port Side  
\*Deck 4, Starboard side from 6:00 pm to 6:00 am only (all of Deck 4 is non-smoking from 6:00 am to 6:00 pm)  
Smoking is prohibited inside all Guest staterooms and on stateroom verandahs. Guests found smoking in their staterooms or on their verandahs will be charged a \$250 stateroom recovery fee. Electronic cigarettes may only be used in designated smoking areas.

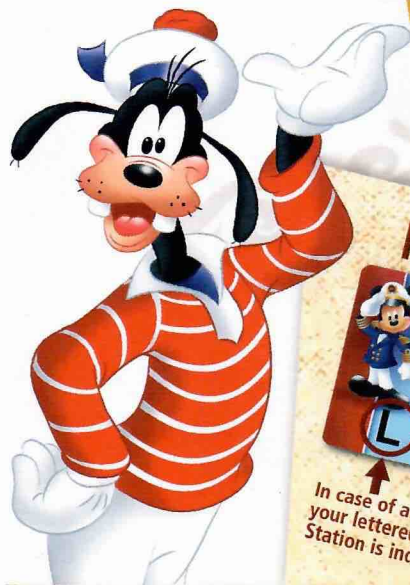
**Walt Disney Theatre**  
Theatrical performances may use artificial fog, strobe lights, pyrotechnics and other special effects. For the safety of our performers, and the comfort of those around you, the use of any photography, video recording device or any electronic equipment is prohibited.

**No Reserved Seats Policy**  
As a courtesy to all our Guests, we kindly advise that the saving of seats is not permitted in the Walt Disney Theatre, and the saving of the sun loungers is not permitted on Deck 9 and 10. Items left unattended will be returned to lost and found at Guest Services, Deck 3 Midship.

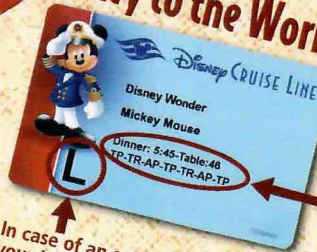
**Verandah Safety**  
Please do not leave any personal items on your verandah that may be blown overboard or present a fire hazard if left unattended. Do not throw anything over the ship's side. Guests should not sit, lean or climb on the railing or leave children unattended on the verandah. Do not open the verandah and stateroom doors simultaneously as this may create a wind effect and could cause the doors to slam unexpectedly.



# WELCOME ABOARD!



## Key to the World Card Information



In case of an emergency, your lettered Assembly Station is indicated here.

- ♥ Dinner seatings are 5:45 pm or 8:15 pm.
- ♥ Your table number for the cruise is located after your dinner seating.
- ♥ Dinner locations and rotation are indicated by letters under your dinner time.  
AP - Animator's Palate, Deck 4, Aft  
TR - Triton's, Deck 3, Midship  
TP - Tiana's Place, Deck 3, Aft



### FAMILY DECK PARTY

Mickey's Sail-a-Wave Deck Party is a high energy, Disney Bounding, countdown celebration happening atop the Disney Wonder! Wave goodbye to work & school, and hello to vacation! Mickey and the gang throw a Sail-a-Wave celebration you won't forget!!  
**Deck 9 Stage, 4:30 pm**

**DRINK OF THE DAY**  
Captain's Mai Tai (Alcoholic)  
Princess Delight (Non-Alcoholic)

Afternoon	1:45	2:00	2:15	2:30	2:45	3:00	3:15	3:30	3:45	4:00	4:15	4:30	4:45	5:00	5:15	5:30	5:45	6:00	6:15	6:30	6:45					
FUNNEL VISION	Brother Bear (G)  Open Captioning Funnel Vision					<div>Mandatory Guest Assembly Drill 4:00 pm (All Guests must attend)</div> <div>All ship services will be suspended during this time.</div> <div>Refer to the posted drill instructions on the back of your stateroom door prior to heading to Deck 4. Please bring your Key to the World Card.</div> <div>You will not need your life jacket for the Guest Assembly Drill.</div> <div> Disney Cruise Line Disney Keycard All Guests Must Have It With You At All Times To Enter Ship's Deck 4 At 4:00 PM On Day 1</div> <div>Your Assembly Station is indicated on your Key To The World card.</div>						Mickey's Sail-A-Wave Party! Deck 9 Stage					The Muppets (PG)  Open Captioning Funnel Vision									
BUENA VISTA THEATRE	Ralph Breaks the Internet (PG) < Starts 1:30 pm Duration: 1 Hour 54 Minutes											The Incredibles 2 (PG) Duration: 1 Hour 58 Minutes														
CHARACTERS	Join the Lion Guard Oceaneer Club																Mickey DK4 Mid (S)					Goofy Preludes				
FUN FOR ALL AGES	Walking Ship Tour Preludes				Walking Ship Tour Preludes														Chip & Dale Lobby Atrium (P)		Minnie DK4 Mid (S)		Showtime: The Ventriloquism & Comedy of Michael Harrison Walt Disney Theatre			
	Join the Lion Guard Oceaneer Club				Youth Activities Tour Oceaneer Lab				Guitar Melodies With David Kenny Promenade Lounge																	
ADULTS						Spa Raffle <small>Senses Spa Fitness Center</small>					Mickey's Sail-A-Wave Party! Deck 9 Stage					Disney Songs with Supremova Duo Lobby Atrium										
	Spa Open House <small>Senses Spa Fitness Center</small>										Kids Me! Bath Padi Party <small>Senses Spa Fitness Center</small>					Cruisin' Solo Gathering Cove Cafe										
VIBE 14-17 YEARS OLD	Youth Activities Open House & Registration											Youth Activities Open House & Registration					Open for Teens									
EDGE 11-14 YEARS OLD	Youth Activities Open House & Registration											Youth Activities Open House & Registration					Open for Tweens									
OCEANEER LAB 3-12 YEARS OLD	Youth Activities Open House & Registration					Youth Activities Tour		Open House		Youth Activities Open House & Registration					Game Challenge		Ice Breakers									
OCEANEER CLUB 3-12 YEARS OLD	Open House		Join the Lion Guard		Youth Activities Open House & Registration		Youth Activities Open House & Registration					Spider-Man Origin		Pre-School Fun (3-5 Years Old)												

### Mandatory Guest Assembly Drill 4:00 pm (All Guests must attend)

All ship services will be suspended during this time.

Refer to the posted drill instructions on the back of your stateroom door prior to heading to Deck 4. Please bring your Key to the World Card.

You will not need your life jacket for the Guest Assembly Drill.



Your Assembly Station is indicated on your Key To The World card.



Evening	7:00	7:15	7:30	7:45	8:00	8:15	8:30	8:45	9:00	9:15	9:30	9:45	10:00	10:15	10:30	10:45	11:00	11:15	11:30	11:45	12:00			
FUNNEL VISION		Frozen Fever (G) Funnel Vision	Wreck-It Ralph (PG)  Open Captioning Funnel Vision								WALL-E (G) Funnel Vision													
BUENA VISTA THEATRE					The Incredibles 2 (PG) Duration: 1 Hour 58 Minutes								Disneynature: Penguins (G) Duration: 1 Hour 16 Minutes											
CHARACTERS											Minnie DK4 Mid (S)		Mickey DK4 Mid (S)											
											Daisy Lobby Atrium (P)		Donald Lobby Atrium (P)											
FUN FOR ALL AGES		Family Dance Party  Promenade Lounge	Disney Tunes Trivia Azure		Showtime: The Ventriloquism & Comedy of Michael Harrison Walt Disney Theatre				Family Animation D Lounge				Family Superstar Karaoke D Lounge											
	Disney Vacation Club Member Celebration D Lounge		Guitar Melodies With David Kenny Promenade Lounge						Guitar Melodies With David Kenny Promenade Lounge															
ADULTS			Pub Quiz Crown & Fin Pub								1820 Society: Stir It Blend It Taste It Cove Cafe		Game Show: The Feud Azure		Wonder Quest Azure		Cruise Staff DJ Azure							
			All That Jazz with Bongi Maestro Cadillac Lounge														Late Night Piano Cadillac Lounge							
VIBE 14-17 YEARS OLD			Cards Tournament								Wii Challenge				Ice Breakers		Profiles				The Download		Heroes and Villains	
EDGE 11-14 YEARS OLD			GAGA Ball								Ice Breakers		Profiles		Taking it to The Edge						Heroes and Villains			
OCEANEER LAB 3-12 YEARS OLD			Oceaneer Rangers			GAGA Ball					Meet Your Counselors					Lava Flow					Human Bingo		Youth Activities Open House	
OCEANEER CLUB 3-12 YEARS OLD			Welcome Party						Space Ranger Training					Once Upon a Time					Game Challenge				MARVEL Super Hero Academy Avengers Assemble	

Fold along the dotted lines and take me with you so you don't miss any of the fun!

FOLD  
ASL - AMERICAN SIGN LANGUAGE INTERPRETED

YOUTH ACTIVITIES OPEN HOUSE  
A non-secured program with activities for families, adults and children to enjoy together.





# The MICHAEL HARRISON SHOW



## WALT DISNEY THEATRE

Deck 4, Forward  
6:15 pm & 8:30 pm

As a courtesy to all Guests,  
we kindly advise that the saving of  
seats is **not** permitted  
in the Walt Disney Theatre.

Assistance is available at the entrance to the Walt Disney Theatre 30 minutes prior to show time.

## Character Experience Reservations

Port Adventures Desk, Deck 3, Midship - 12:00 pm - 2:00 pm

The following appearances require a reservation.  
Space is limited. For Guests who did not book online,  
a limited number of reservations are available for:

- Princess Gathering
- Frozen Gathering
- VIP Character Breakfast

## Character Appearances

### MICKEY MOUSE

DK4 Mid (S) - 12:00 pm,  
1:00 pm, 5:15 pm & 10:00 pm

### PLUTO

DK4 Mid (S)  
12:30 pm & 1:30 pm

### JOIN THE LION GUARD

Disney's Oceaneer Club  
2:00 pm

### MICKEY'S SAIL-A-WAVE PARTY!

Deck 9 Stage - 4:30 pm

### GOOFY

Preludes - 5:30 pm

### CHIP & DALE

Lobby Atrium (P) - 5:30 pm

### MINNIE MOUSE

DK4 Mid (S)  
5:45 pm & 9:30 pm

### DAISY DUCK

Lobby Atrium (P) - 9:45 pm

### DONALD DUCK

Lobby Atrium (P) - 10:15 pm



(S) Starboard Side - (P) Port Side

For details of daily Disney character appearances, refer to the  
Disney Cruise Line App, character line on the Navigator Grid, or the digital  
character board in the Lobby Atrium.

Lines close 15 minutes after advertised start time.

## SHIP DIRECTORY

### YOUTH ACTIVITIES

Disney's OCEANEER CLUB	DECK 5, MID	12:00 PM - 3:30 PM 4:30 PM - 12:00 AM
Disney's OCEANEER LAB	DECK 5, MID	12:00 PM - 3:30 PM 4:30 PM - 12:00 AM
EDGE	DECK 9, MID	12:00 PM - 3:30 PM 4:30 PM - 12:00 AM
It's A SMALL WORLD NURSERY	DECK 5, AFT	12:00 PM - 3:30 PM 5:30 PM - 11:00 PM
VIBE	DECK 10, MID	12:00 PM - 3:30 PM 4:30 PM - 12:00 AM

### POOLS

Children under 12 years of age must have adult supervision in all pools.

AQUALAB	DECK 9, AFT	12:00 PM - 3:30 PM 4:30 PM - 6:00 PM
DORY'S REEF	DECK 9, AFT	12:00 PM - 3:30 PM 4:30 PM - 6:00 PM
GOOFY'S POOL	DECK 9, MID	12:00 PM - 3:30 PM 6:00 PM - 8:00 PM
QUIET COVE POOL (18+)	DECK 9, FWD	12:00 PM - 10:00 PM
TWIST N' SPOUT	DECK 9, AFT	12:00 PM - 3:30 PM 4:30 PM - 6:00 PM

Please note, "selfie sticks" are not permitted in any aquatic area.  
Complimentary pool vests are available for children to use in the pools onboard.  
They are located on the pool deck.

### RECREATION

CHILL SPA	DECK 9, FWD	12:00 PM - 10:00 PM
PORT ADVENTURES DESK	DECK 3, MID	12:00 PM - 3:00 PM 4:30 PM - 8:30 PM
SENSES FITNESS CENTER (18+)	DECK 9, FWD	11:30 AM - 10:00 PM
WIDE WORLD OF SPORTS DECK	DECK 10, FWD	- 24 HOURS

### GENERAL INFORMATION

BUENA VISTA THEATRE	DECK 5, AFT	SHOWTIMES
CONNECT@SEA DESK	DECK 3, AFT	1:00 PM - 4:00 PM 7:00 PM - 10:00 PM
DISNEY VACATION CLUB DESK	DECK 4, MID	5:00 PM - 7:00 PM 8:30 PM - 10:00 PM
DISNEY VACATION PLANNING DESK	DECK 4, MID	7:00 PM - 8:30 PM
FUNNEL VISION	DECK 9, MID	SHOWTIMES
GUEST SERVICES	DECK 3, MID	24 HOURS
MEDICAL HEALTH CENTER	DECK 1, FWD	4:30 PM - 7:00 PM
PORT SHOPPING DESK	DECK 3, MID	7:00 PM - 8:30 PM
PRELUDES	DECK 4, FWD	SHOWTIMES
SENSES SPA AND SALON	DECK 9, FWD	11:30 AM - 10:00 PM
SHUTTERS PHOTO GALLERY	DECK 4, AFT	6:00 PM - 10:30 PM
WALT DISNEY THEATRE	DECK 4, FWD	SHOWTIMES

### SHOPPING

ART GALLERY	DECK 4, MID	
BIBBIDI BOBBIDI BOUTIQUE	DECK 10, FWD	12:00 PM - 3:00 PM 5:00 PM - 9:00 PM
MICKEY'S MAINSAIL	DECK 4, FWD	6:00 PM - 11:00 PM
QUACKS	DECK 9, MID	
SEA TREASURES	DECK 3, FWD	6:15 PM - 11:00 PM
WHITE CAPS	DECK 4, FWD	6:00 PM - 11:00 PM

## EVENING ATTIRE Cruise Casual

## DINING & LOUNGES

### LUNCH

CABANAS	DECK 9, AFT	11:45 AM - 3:15 PM
DAISY'S DE-LITES	DECK 9, AFT	12:00 PM - 3:30 PM 4:30 PM - 6:00 PM
PINOCCHIO'S PIZZERIA	DECK 9, MID	12:00 PM - 3:30 PM 4:30 PM - 6:00 PM
PETE'S BOILER BITES	DECK 9, AFT	12:00 PM - 3:30 PM 4:30 PM - 6:00 PM
TRITON'S (À-LA CARTE)	DECK 3, MID	11:45 AM - 1:30 PM

### DINNER

ANIMATOR'S PALATE	DECK 4, AFT	5:45 PM & 8:15 PM
PALO (18+)	DECK 10, AFT	6:00 PM - 8:30 PM
PETE'S BOILER BITES	DECK 9, AFT	6:00 PM - 9:30 PM
TIANA'S PLACE	DECK 3, AFT	5:45 PM & 8:15 PM
TRITON'S	DECK 3, MID	5:45 PM & 8:15 PM

### LATE NIGHT SNACKS

CROWN & FIN PUB (18+ AFTER 9:00 PM)	DECK 3, FWD	10:30 PM - 11:30 PM
PINOCCHIO'S PIZZERIA	DECK 9, MID	9:30 PM - 12:00 AM
PROMENADE LOUNGE	DECK 3, AFT	10:30 PM - 11:30 PM

### ADDED FEATURES

BEVERAGE STATION	DECK 9, AFT, PORT SIDE	24 HOURS
EYE SCREAM	DECK 9, MID	12:00 PM - 3:30 PM 4:30 PM - 11:00 PM
ROOM SERVICE	DIAL 4330	OPENS AT 1:30 PM

### ENTERTAINMENT - LOUNGES - BARS

Adults must be 21 and older to consume alcoholic beverages.

AZURE (18+ AFTER 9:00 PM)	DECK 3, FWD	8:30 PM - 1:00 AM
CADILLAC LOUNGE (18+)	DECK 3, FWD	6:00 PM - 12:00 AM
COVE CAFE (18+)	DECK 9, MID	11:45 AM - 12:00 AM
CROWN & FIN PUB (18+ AFTER 9:00 PM)	DECK 3, FWD	4:30 PM - 12:00 AM
D LOUNGE	DECK 4, MID	SHOWTIMES
PINOCCHIO'S PIZZERIA	DECK 9, MID	11:45 AM - 12:00 AM
PRELUDES	DECK 4, FWD	SHOWTIMES
PROMENADE LOUNGE	DECK 3, AFT	3:00 PM - 12:00 AM
SIGNALS (18+)	DECK 9, FWD	4:30 PM - 10:00 PM
SULLEY'S SIPS	DECK 9, MID	11:45 AM - 6:00 PM

Public Health Advisory: Consuming raw or under-cooked meats, poultry, seafood, shellfish, or eggs may increase your risk for food borne illness, especially if you have certain medical conditions.



Explore and more with our carefully selected  
Port Adventures. Visit the Port Adventures Desk,  
Deck 3, Midship to find out more.

## IMPORTANT NUMBERS

Fire/Security:	7-3001
Medical EMERGENCY:	7-3000
Health Center:	7-1927