

# VOYAGE NAVIGATOR

SUNDAY  
APRIL 21, 2019

TO

SUNDAY  
APRIL 28, 2019

## CRUISE HIGHLIGHTS

### SUNDAY

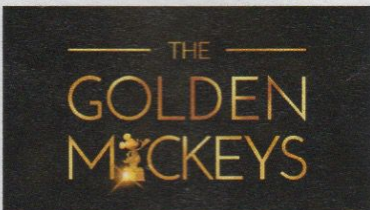
SAN DIEGO, CALIFORNIA  
Port Departure: 5:00 pm  
All Aboard: 4:00 pm  
Attire: Cruise Casual



**SHOWTIME: JON ARMSTRONG**  
Walt Disney Theatre  
6:15 pm & 8:30 pm

### MONDAY

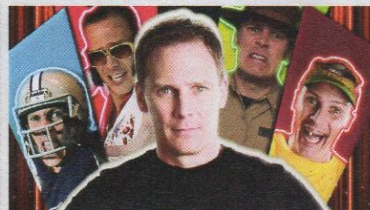
DAY AT SEA  
Attire: Formal



**THE GOLDEN MICKEYS**  
Walt Disney Theatre  
6:15 pm & 8:30 pm

### TUESDAY

CABO SAN LUCAS, MEXICO  
All Ashore: 8:30 am  
All Aboard: 4:45 pm  
Attire: Cruise Casual



**SHOWTIME: HEATH HYCHE**  
Walt Disney Theatre  
6:15 pm & 8:30 pm

### WEDNESDAY

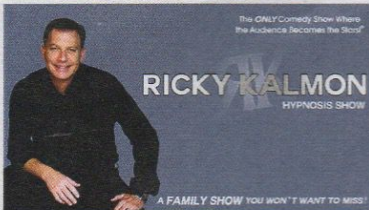
MAZATLAN, MEXICO  
All Ashore: 8:30 am  
All Aboard: 4:45 pm  
Attire: Cruise Casual



**FROZEN, A MUSICAL SPECTACULAR**  
Walt Disney Theatre  
6:00 pm & 8:30 pm

### THURSDAY

PUERTO VALLARTA, MEXICO  
All Ashore: 8:30 am  
All Aboard: 4:45 pm  
Attire: Pirate or Cruise Casual



**SHOWTIME: RICKY KALMON**  
Walt Disney Theatre  
6:15 pm & 8:30 pm

### FRIDAY

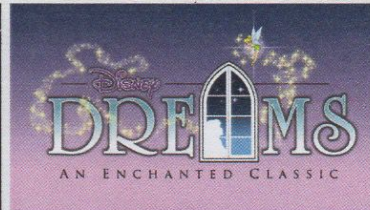
DAY AT SEA  
Attire: Semi Formal



**MOVIE SPECIAL NIGHT**  
Walt Disney Theatre

### SATURDAY

DAY AT SEA  
Attire: Cruise Casual



**DISNEY DREAMS: AN ENCHANTED CLASSIC**  
Walt Disney Theatre  
6:00 pm & 8:30 pm

Subject to change.

## WELCOME ABOARD!

### YOUR STATEROOM & LUGGAGE

Staterooms will be ready at 1:30 pm. To allow your Stateroom Host/ess time to prepare your room, please do not remove the blue stanchion straps. Stateroom hosts will deliver luggage throughout the day until 5:30 pm.

### STATEROOMS WITH BUNK BEDS

Bunk beds are recessed into the ceiling and will be prepared during evening turndown service by your Stateroom Host/ess.

### STATEROOM SAFE

Each stateroom is equipped with a secured storage safe. Instructions for use are located on the safe.

### TO CHANGE DINING ASSIGNMENT

Requests for different seating times will be taken today:

- 12:30 pm - 3:30 pm; Book in Azure, Deck 3, Forward or please dial 7-10891 and leave a voicemail.

### PALO DINING RESERVATIONS

Reservations are required and will be taken on a first come basis today:

- 12:30 pm - 3:30 pm; Book in Azure, Deck 3, Forward or please dial 7-6843 and leave a voicemail.

**Adult Exclusive Dining Opportunity!** Guests are invited to make 2 dinner reservations at our adult-exclusive restaurant, Palo. This includes one reservation on embarkation evening and one more on another night of the cruise. Reservations are subject to availability and a specialty dining charge will apply.

### DINNER

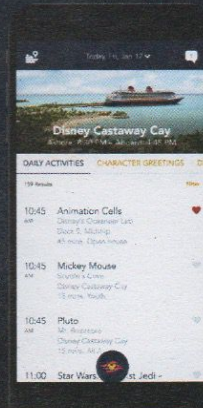
5:45 pm - First seating      8:15 pm - Second seating

Please check your Key To The World Card for details of your dining rotation, and bring them to your specific dining location. There is no need to wait in line prior to dinner. Dining Rooms open at designated seating times and your table is reserved each night of your cruise.

AP = Animator's Palate, Deck 4, Aft      TR = Triton's, Deck 3, Midship      TP = Tiana's Place, Deck 3, Aft

DOWNLOAD THE  
**DISNEY CRUISE LINE  
NAVIGATOR APP**  
BEFORE YOU SAIL AWAY

Explore all that's going on aboard your Disney cruise.



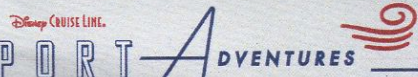
Tap the Disney Cruise Line logo to view your Personal Itinerary.

Send messages to your friends and family on the ship.

Your Personal Itinerary includes all activities booked at home and onboard.

Create the most memorable experiences during your Disney Cruise Line vacation with Port Adventures! Our Port Adventures are designed for you to see the best our ports have to offer. Stop by the Port Adventures Desk, Deck 3, Midship where our friendly team will be happy to assist you plan your adventure!

There is an adventure for everyone on your Disney Wonder® vacation.



IMPORTANT NUMBERS

Fire/Security: 7-3001

Medical Emergency: 7-3000

Health Center: 7-1927

# ADULT ACTIVITY HIGHLIGHTS



**1820 SOCIETY (GUESTS 18-20 YEARS ONLY)**  
1820 Society is an exclusive option for young adult Guests. Come meet fellow passengers and learn about the excellent activities that the Disney Wonder offers to create the perfect cruise experience.



**ANYONE CAN COOK**  
Every Chef has a specialty, and ours is no exception. Get a taste of perfection with each recipe.

## CRUISIN' SOLO GATHERING

Single, single parent or just traveling alone? Join your Cruise Staff for an informal gathering.



**DISNEY AT SEA WITH D23**  
Join us for an exciting look at what's new and what's next from all of Disney's wonderful worlds! From theme parks and movies, to vision, music and beyond, you won't want to miss a minute of this new show presented by D23, Disney's official fan club.



**MATCH YOUR MATE**  
It's time to play everyone's favorite couples game show, Match Your Mate!



*Senses Spa & Salon has a variety of seminars and fitness classes available throughout the cruise. Pamper yourself with therapeutic spa treatments of heat, steam, rain and water in luxurious and tranquil private rooms. Deck 9, Forward.*

## BEVERAGE SEMINARS

Your Beverage team has a host of tastings and seminars to entertain and educate you. Stop by Azure, Deck 3, Forward to pre-book these experiences (nominal fee applies).

Mixology - Stem to Stern Wine Tasting - Martini Tasting - Champagne Tasting  
Beer Tasting - Cognac Tasting - Whisky Tasting  
Tequila & Margarita Tasting - Chocolate & Liquor Tasting - Rum Tasting

## FEATURED VARIETY ACTS THIS VOYAGE



**THE MAGIC & COMEDY OF JON ARMSTRONG**  
Appearing on "Penn and Teller's Fool Us" and winner of numerous awards, including Close Up Magician of the Year, Jon Armstrong is best known for his world-class magical talent and for being funny. Not just magician funny, actually funny. Jon honed both skills beginning at age 20, when he became the resident magician at Disney World. When you see him live, you will laugh loudly.



**THE PHYSICAL COMEDY OF HEATH HYPHE**  
Heath uses stand-up comedy, quick-change costumes, original music, sound effects, and cleverly constructed props and scenery to take the audience on a journey through his vivid imagination and meet a cavalcade of manic characters. Heath Hyche's TV credits include "The Tonight Show with Jay Leno", "Last Comic Standing", and two seasons on "Blue Collar TV" alongside Jeff Foxworthy, Larry the Cable Guy, and Bill Engvall. On the big screen, Heath appeared in the films "Man on the Moon" with Jim Carrey and Will Ferrell's "Talladega Nights".



**THE COMEDY & HYPNOSIS OF RICKY KALMON**  
For over two decades, Kalmon's hypnosis show has amazed audience around the world. Kalmon is the star of SNAP! that airs on the Disney Channel. An exciting and high-energy experience, Ricky's live shows are the Only Comedy Show Where the Audience Becomes the Stars. Kalmon's uniqueness comes from the way he combines music, audience participation, and comedy to create an unforgettable show which is unmatched by anyone. It's a show that will keep you on the edge of your seat and take you on a Vacation of the Mind! A Ricky Kalmon show is more than a comedy show—it's an experience!



**THE PHYSICAL COMEDY OF MARCUS MONROE**  
Marcus Monroe is a New York City based award winning comedian and juggler. His show is a high-energy blend of innovative juggling with in your face comedic banter riddled with awkwardness. He is the recipient of the prestigious Andy Kaufman Award and has recently appeared on The Late Show, HBO, MTV, Netflix and Comedy Central. The New York Times calls Marcus "one of the most entertaining performers to watch in New York City."

# FUN FOR ALL AGES HIGHLIGHTS



**MICKEY'S SAIL-A-WAVE PARTY!**  
Mickey's Sail-a-Wave Deck Party is a high energy, Disney Bounding, countdown celebration happening atop the Disney Wonder! Wave goodbye to work & school, and hello to vacation! Mickey and the gang throw a Sail-a-Wave celebration you won't forget!!



**A PIRATES LIFE FOR ME**  
Calling all Pirates, we be! If ye have an adventurous spirit or pirate savvy, come spin the "Wheel of Destiny" for a treasure trove of fun be ripe for the takin' in this action packed pirate game show.



**CHIP-IT GOLF (12+)**  
It's par for the course for our Guests 12 and older to compete on our special "greens" in this fun tournament.



**DISNEY JUNIOR PIRATE & PRINCESS DANCE PARTY**  
Calling all Pirates and Princesses! Come join us for a family dance party featuring music and fun activities from Jake & the Neverland Pirates and Sofia the First. Whether you favor tiaras or treasure chests, there's something for you at our Disney Junior Pirate & Princess Dance Party!



**DISNEY VACATION CLUB GROUP PREVIEW**  
Join us for our interactive group presentation to learn about taking magical vacations year after year! For more information, please see a Disney Vacation Club Cast Member on Deck 4, Midship, or call 7-2805 from your stateroom phone.



**FAMILY SUPERSTAR KARAOKE**  
Join your Cruise Staff and sing along to your favorite song, fun for everyone.

## GAME SHOW: THE FEUD

"Survey Says" you'll have a fantastic time with our version of a classic game.

## GAME SHOW: THE WHEEL

A special version of this popular TV game show.



**JACK-JACK'S INCREDIBLE DIAPER DASH**  
Calling all baby cruisers! It's time to take to the mat to see who's the fastest crawler of the seven seas! Register your baby 15 minutes prior to the big race.



**JACKPOT BINGO**  
CASH prizes and raffle prizes to be won in our family friendly Bingo sessions with your Cruise Staff. Those under the age of 18 must be accompanied by an adult to play!



**MICKEY MANIA**  
Join us for the ultimate test of your Disney knowledge as we play our live, interactive game show, that's "insania!"



**PIRATES IN THE CARIBBEAN DECK PARTY**  
Yer Disney Friends are all set for a swashbucklin' good time! It's a Pirate Celebration, me hearties! Hoist yourself to Deck 9 to enjoy a rowdy buccaneer bash we call Pirates IN the Caribbean Deck Party.



**SO YOU THINK YOU KNOW YOUR FAMILY?**  
This fun-filled family game show is always full of surprises. Find out how well you know, or don't know your family!



**WAKE UP WITH DISNEY JUNIOR**  
What happens when you experience unlimited fun with your favorite Disney Junior shows? You get an exciting dance party designed especially for preschoolers ages seven and under.



**WHO WANTS TO BE A MOUSEKETEER?**  
Your chance to get into the "hot seat" and win limited edition prizes. Or, play along as part of our live studio audience.



Please check the Disney Cruise Line App or Personal Navigator for all times and locations.

# YOUTH ACTIVITIES INFO & HIGHLIGHTS



## Dine & Play

As a convenience for families dining at 8:15 pm, our Youth Activities counselors will be available at the entrance of each restaurant to bring registered children to join the fun in the Youth Activities areas at the following times:

9:15 pm at the entrance of Triton's,  
9:30 pm at the entrance of Tiana's Place and Animator's Palate.

## Pre-School Fun

Disney's Oceaneer Club is reserved for only those between 3-5 years of age. This is a time for them to become acclimated to Disney's Oceaneer Club, make new friends and join in on a lot of fun-filled programs and activities. Please note after Pre-School Fun has concluded, Disney's Oceaneer Club will be open for Secured Programming for ages 3-12.

## Youth Activities Open House

Open House is an opportunity for all to come and participate in a variety of exciting activities and free time in the Oceaneer Club, Oceaneer Lab, Edge and Vibe throughout the cruise. During these times secured programming will still be offered in the other venue for those looking to check their children into care.

## Youth Activities Venue Tour

Come and take a tour of Disney's Oceaneer Club and Disney's Oceaneer Lab. This informative tour will give you the information you need to know about our exciting spaces and activities offered for children ages 3-12. Please see your Personal Navigator or the Navigator App for times.



3 - 12 years old

## JOIN THE LION GUARD

Harness your inner animal and find out if you have what it takes to join the Lion Guard!

## MILES' COSMIC EXPLORER ADVENTURES

Miles needs your help! Gadfly has stolen his tech, and it's up to you to solve clues and puzzles in order to return the missing items back to Miles.

## SOFIA THE FIRST - MAGICAL STORYTELLING

You're invited to take part in Sorcery 101 at the Royal Prep Academy, where you'll learn a few spells and help retell one of Sofia's many magical adventures.



3 - 12 years old

## ANYONE CAN COOK: COOKIES

From our galley to yours. Join our chefs as they show you how to prepare delicious cookies.

## LAVA FLOW

Build your own volcano and watch it erupt as you learn about the physics of volcanoes.

## PISTON CUP CHALLENGE

It's Dinoco time and you're part of the pit crew! Design your own race car and see if you've got what it takes to end up in the winner's circle!



11 - 14 years old

## HEROES AND VILLAINS

Join your favorite hero or villain team on a series of activities that will take place throughout the cruise.

## DESCENDANT'S DEN DJ SPIN OFF

Photo Booth! DJ lessons! Fun games! Sing! Laugh! Dance! It's the next generation of fun - Descendants style!



14 - 17 years old

## GOTCHA

You will try to eliminate your victim by various methods collecting points throughout the day, last person standing with the most points wins.

## THAT'S HILARIOUS

Ever wanted to show off your comedy skills? Then be a part of the cast for the crazy improv show "That's Hilarious" and put on a live show for your friends.

# BUENA VISTA THEATRE

Deck 5, Aft

## FEATURE MOVIES THIS VOYAGE

### SUNDAY - SAN DIEGO, CALIFORNIA

5:30 pm	PG	Dumbo (2019)
8:00 pm	PG	Dumbo (2019)
10:15 pm	PG-13	Avengers: Infinity War

### MONDAY - DAY AT SEA

9:00 am	G	Dumbo (2019)
11:15 am	G	Disneynature: Penguins
2:30 pm	PG-13	Captain Marvel
5:15 pm	PG	Ralph Breaks the Internet
8:00 pm	PG	Ralph Breaks the Internet
10:30 pm	PG-13	Captain Marvel



### TUESDAY - CABO SAN LUCAS, MEXICO

12:15 pm	PG-13	Avengers: Infinity War
3:15 pm	G	Disneynature: Penguins
5:00 pm	PG-13	Captain Marvel
8:00 pm	PG-13	Captain Marvel
10:30 pm	G	Dumbo (2019)



### WEDNESDAY - MAZATLAN, MEXICO

9:00 am	PG	The Incredibles 2
11:30 am	PG-13	Captain Marvel
2:15 pm	G	Dumbo (2019)
4:45 pm	PG-13	Avengers: Infinity War
8:00 pm	PG-13	Avengers: Infinity War
11:00 pm	G	Disneynature: Penguins



### THURSDAY - PUERTO VALLARTA, MEXICO

11:00 am	G	Dumbo (2019)
1:15 pm	G	Disneynature: Penguins
3:00 pm	PG-13	Captain Marvel
5:30 pm	PG	The Incredibles 2
8:00 pm	PG	The Incredibles 2



### FRIDAY - DAY AT SEA

8:30 am	PG	Family Movie Fun Time: Ralph Breaks the Internet
10:45 am	G	Disneynature: Penguins

### SATURDAY - DAY AT SEA

8:30 am	G	Disneynature: Penguins
5:45 pm	G	Disneynature: Penguins
8:30 pm	G	Disneynature: Penguins

Subject to change.



# MORE TO ENJOY ONBOARD

## NEW SUMMER 2020 ITINERARIES

New Summer 2020 Itineraries announced! Be among the first to experience sailings in Europe, Alaska, the Caribbean and the Bahamas with your family! And for the first time in five years, Disney Magic will return to the Greek Isles on three special sailings in the Mediterranean. Visit Disney Vacation Planning, Deck 4, Midship for more information. Disney Vacation Planning tends to get busy on the last day of sailing. Don't miss the opportunity to plan your next Disney vacation.

## DISNEY VACATION CLUB® GROUP PREVIEW

Join us for our interactive group presentation to learn about taking magical vacations year after year! For more information, please see a Disney Vacation Club Cast Member on Deck 4, Midship, or call 7-2805 from your stateroom phone.

## PORT SHOPPING INFORMATION

Come and meet Hannah, your Port Shopping Guide, at the Port Shopping Desk, Deck 3, Midship from 7:00 pm - 8:30 pm for a complimentary charm. Don't miss the Port Shopping Talk on Day at Sea 1 in the Buena Vista Theatre, Deck 5, Aft, at 1:00 pm for all of your Port Shopping information and to enter a raffle for a chance to win a Diamond Pendant. Tune into Channel 24-6 all cruise long for more Port Shopping information.

## Connect@Sea

### FREE INTERNET EMBARKATION DAY SPECIAL

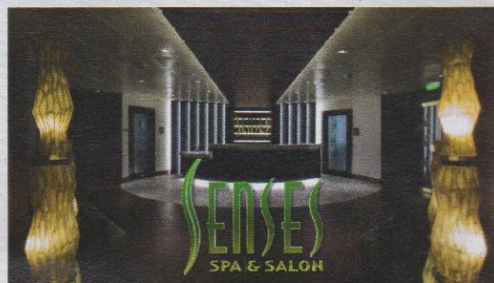
Sign up for a free 50 MB Internet package today and enjoy it throughout the cruise! This offer is only available from noon to midnight on the day your cruise begins. On your wireless device, simply find the "DCL-Guest" Wi-Fi Network, go to [www.dclguest.com](http://www.dclguest.com) to create an account, and get your free 50 MB of data to start sharing your memories even before you leave port! If you have any questions, ask our Connect@Sea Expert located at Deck 3, Aft. No purchase necessary. The free 50 MB package can only be used for the duration of the cruise. Only one free package per stateroom, but everyone can share it. Unused data from a package will not be reimbursed and it is non-transferable between voyages or ships.

### RELIGIOUS SERVICES

Groups who need a location to practice their faith may contact Guest Services for availability information.



## SENSES SPA & SALON



DECK 9, FORWARD  
Extension 7-1465

### RAINFOREST

Come enjoy our serenity lounge, with heated chairs, dry sauna, aromatherapy steam rooms and rainfall, misting showers. 7 Day Pass: Couples \$193 Single \$144

### REJUVENATION SPA CONSULTATIONS

Ready to enhance your natural beauty? Book your free Facial Rejuvenation consultation with our Rejuvenation Doctor at the Senses Spa.

### ONBOARD ACUPUNCTURE

Acupuncture is a safe and effective medicine that allows your body to heal itself, and is effective for various health conditions. See your onboard Acupuncturist for your free consultation.

### IONITHERMIE

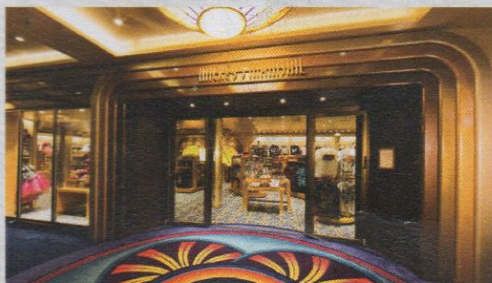
Lose between 1 - 8 inches. Speed up your metabolism. Firm muscle tone. Improve appearance of cellulite. \$155/1 session or \$299/3 sessions.

### BIOTEC FACIALS

Our revolutionary facials address skin tone, blemishes and fine lines to transform the texture of the skin. The ultrasonic peel, massage and light therapy deliver a complexion that has never been smoother.

**AN 18% AUTO GRATUITY IS ADDED TO ALL SENSES SPA SERVICES.**

## MERCHANDISE SHOPPING



DECK 4, FORWARD

### EFFY JEWELRY SPECIAL OFFER

The stylish Effy jewelry pieces are designed to allow you the opportunity to mix and match to create a look that's all your own. Receive a complimentary Effy scarf and jewelry pouch with each Effy jewelry purchase. While supplies last. White Caps, Deck 4, Forward.

### TAG HEUER TIMEPIECES ONBOARD

Representatives from TAG Heuer, one of the world's largest luxury watch brands, have boarded the Disney Wonder® Cruise Ship. Visit White Caps, Deck 4, Forward, for a preview of the stylish new timepieces brought onboard especially for this sailing. Please check your Personal Navigator for details about this sailing's onboard TAG Heuer events.

### BIBBIDI BOBBIDI BOUTIQUE

A makeover fit for a princess! Fairy Godmothers-in-Training are ready with magic and pixie dust to give your Prince and Princess the transformation of a lifetime. Make your reservations by visiting Bibbidi Bobbidi Boutique, Deck 10, Forward, Port Side, or dialing extension 7-10878. Limited space available.

### HELPFUL SHOPPING TIP

While shopping onboard, you may collect your items from both stores before proceeding to checkout at any register. No need to have to wait in line in each store to pay for your items separately!

**DUE TO PORT REGULATIONS, WHEN THE SHIP IS DOCKED, THE STORES WILL REMAIN CLOSED.**

## SHUTTERS PHOTO GALLERY



DECK 4, AFT

### WELCOME ABOARD RAFFLE

View your embarkation photos in Shutters, Deck 4, Aft and enter our raffle for a chance to win a 10 Digital Photos valued at \$149.95. Winner must be present at the 10:00 pm drawing in Shutters, Deck 4, Aft. \*Terms and conditions apply. Visit Shutters on Deck 4, Aft for more information.

### GET THE PICTURE!

Take home all your stateroom photos from this cruise on a USB! Terms and conditions apply. Visit Shutters on Deck 4, Aft and ask your friendly Shutters staff for more information. Get The Picture! Hurry! Order yours now.

### PHOTO BOOK

Turn your magical vacation memories into an impressive keepsake with a personalized PhotoBook. Order by 9:30 pm on the final night of the cruise.

### PRIVATE STUDIO PORTRAITURE

Book our exclusive and contemporary Private Studio experience today and capture these memories. No obligation to purchase. Black and White only.

**PHOTOS ARE AVAILABLE FOR VIEWING ON OUR INTERACTIVE PHOTO KIOSKS APPROXIMATELY FIVE HOURS AFTER BEING TAKEN AND ARE ONLY AVAILABLE FOR PURCHASE DURING THIS CRUISE.**

## IMPORTANT INFORMATION

**Security Notice/Unaccompanied Minor Ashore**  
All Guests (including children) who wish to disembark or embark the ship are required to present their Key to the World card at the gangway. A photo ID is also required for those Guests who are 18 years of age or older. Guests under the age of 18 are required to have a Parent, Guardian or other responsible adult complete the "Traveling with Minors" section of "My Online Check-In" prior to sailing or sign an authorization form at the Guest Services Desk if they wish to go ashore unaccompanied or with any adult from another stateroom.

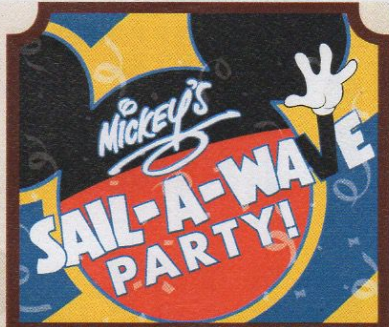
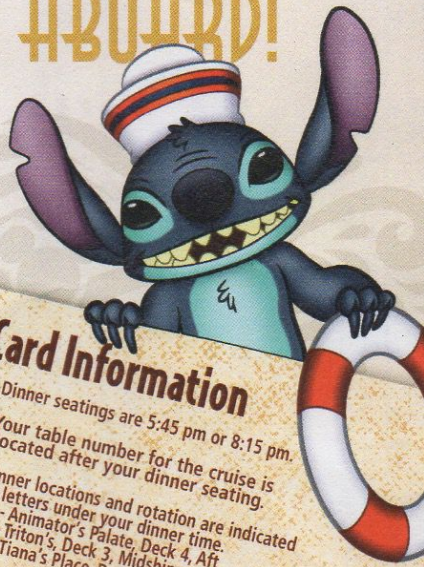
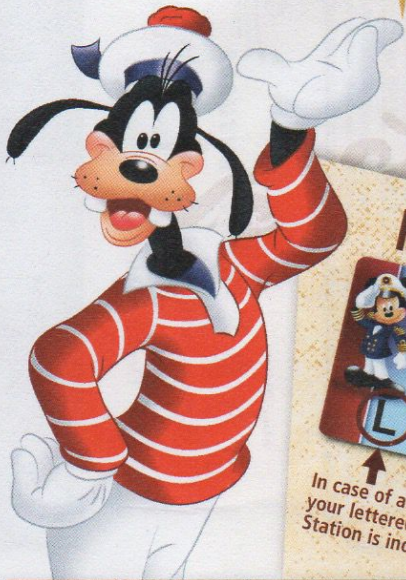
**Inclement Weather**  
For the safety of all Guests, outdoor events may be changed due to unforeseen weather conditions.  
**Insect Repellent Advisory**  
The Centers for Disease Control and Prevention recommends wearing long-sleeved shirts and pants along with insect repellent to protect against mosquito bites and related illnesses when going ashore. Complimentary insect repellent is available on the pier as you exit the ship. Insect repellent is also available for purchase in White Caps. When using both sunscreen and insect repellent, use sunscreen first and apply insect repellent on top of sunscreen.

**Corridor Quiet Hours**  
As a courtesy to all our Guests, please recognize quiet hallway hours from 10:00 pm til 8:00 am.  
**No Reserved Seats Policy**  
As a courtesy to all our Guests, we kindly advise that the saving of seats is not permitted in the Walt Disney Theatre, and the saving of the sun loungers is not permitted on Deck 9 and 10. Items left unattended will be returned to lost and found at Guest Services, Deck 3 Midship.  
**Cold and Flu Reminder**  
Please wash hands frequently and thoroughly, particularly before meals. Contact the Health Center by dialing 7-1927, should anyone in your party become ill.

**Smoking**  
For the comfort of our Guests, the following areas are designated as smoking areas:  
\*Deck 9, Forward, Port Side  
\*Deck 4, Starboard side from 6:00 pm to 6:00 am only (all of Deck 4 is non-smoking from 6:00 am to 6:00 pm)  
Smoking is prohibited inside all Guest staterooms and on stateroom verandahs. Guests found smoking in their staterooms or on their verandahs will be charged a \$250 stateroom recovery fee. Electronic cigarettes may only be used in designated smoking areas.

**Walt Disney Theatre**  
Theatrical performances may use artificial fog, strobe lights, pyrotechnics and other special effects. For the safety of our performers, and the comfort of those around you, the use of any photography, video recording device or any electronic equipment is prohibited.  
**Verandah Safety**  
Please do not leave any personal items on your verandah that may be blown overboard or present a fire hazard if left unattended. Do not throw anything over the ship's side. Guests should not sit, lean or climb on the railing or leave children unattended on the verandah. Do not open the verandah and stateroom doors simultaneously as this may create a wind effect and could cause the doors to slam unexpectedly.

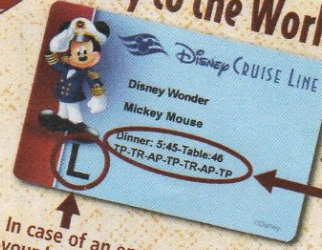
# WELCOME ABOARD!



## FAMILY DECK PARTY

Mickey's Sail-a-Wave Deck Party is a high energy, Disney Bounding, countdown celebration happening atop the Disney Wonder! Wave goodbye to work & school, and hello to vacation! Mickey and the gang throw a Sail-a-Wave celebration you won't forget!!  
Deck 9 Stage, 4:30 pm

## Key to the World Card Information



In case of an emergency, your lettered Assembly Station is indicated here.

- ♥ Dinner seatings are 5:45 pm or 8:15 pm.
- ♥ Your table number for the cruise is located after your dinner seating.
- ♥ Dinner locations and rotation are indicated by letters under your dinner time.  
AP - Animator's Palate, Deck 4, Aft  
TR - Triton's, Deck 3, Midship  
TP - Tiana's Place, Deck 3, Aft

**DRINK OF THE DAY**  
The Easter Egg (Alcoholic)  
Minnie's Mango Pango (Non-Alcoholic)

Afternoon	1:45	2:00	2:15	2:30	2:45	3:00	3:15	3:30	3:45	4:00	4:15	4:30	4:45	5:00	5:15	5:30	5:45	6:00	6:15	6:30	6:45	
FUNNEL VISION	The Princess and the Frog (G)  Open Captioning Funnel Vision											Mickey's Sail-A-Wave Party! Deck 9 Stage		Cars (G)  Open Captioning Funnel Vision								
BUENA VISTA THEATRE	Easter Catholic Mass											Dumbo (2019) (PG) Duration: 1 Hour 52 Minutes										
CHARACTERS	Join the Lion Guard Oceaneer Club											Minnie DK4 Mid (S)		Super Hero Origins: Spider-Man Oceaneer Club								
	Walking Ship Tour Preludes											Mickey's Sail-A-Wave Party! Deck 9 Stage		White Rabbit Lobby Atrium (P) DK4 Mid (S)			Guitar Melodies With David Kenny Promenade Lounge			The Magic & Comedy of Jon Armstrong Walt Disney Theatre		
FUN FOR ALL AGES	Join the Lion Guard  Easter Catholic Mass Oceaneer Club Buena Vista Theatre											Kids MelBath Peditary Senses Spa Fitness Center		Let's Pop with Supernova Duo Lobby Atrium			Cruisin' Solo Gathering Cove Cafe					
ADULTS	Spa Open House Senses Spa Fitness Center											Youth Activities Open House		Cruisin' Solo Gathering Cove Cafe			The Magic & Comedy of Jon Armstrong Walt Disney Theatre					
VIBE 14-17 YEARS OLD	Youth Activities Open House											Youth Activities Open House		Youth Activities Open House			Open for Teens					
EDGE 11-14 YEARS OLD	Youth Activities Open House											Youth Activities Open House		Youth Activities Open House			Open for Tweens					
OCEANEER LAB 3-12 YEARS OLD	Youth Activities Open House & Registration  Youth Activities Tour  Open House											Youth Activities Open House		Youth Activities Open House			Easter Crafts					
OCEANEER CLUB 3-12 YEARS OLD	Open House Join the Lion Guard  Youth Activities Open House & Registration											Youth Activities Open House		Youth Activities Open House			Spider-Man Origins  Open House  Pre-School Fun					

### Mandatory Guest Assembly Drill 4:00 pm (All Guests must attend)

All ship services will be suspended during this time.

Refer to the posted drill instructions on the back of your stateroom door prior to heading to Deck 4. Please bring your Key to the World Card.

You will not need your life jacket for the Guest Assembly Drill.



Your Assembly Station is indicated on your Key To The World Card.

Fold along the dotted lines and take me with you so you don't miss any of the fun!



## EASTER SUNDAY

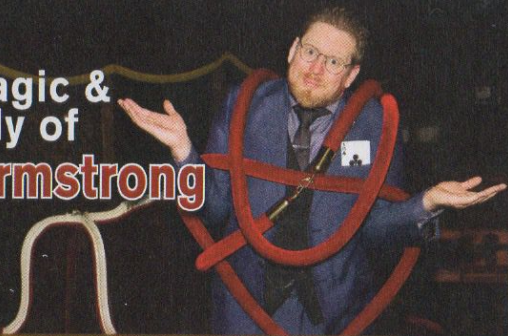
Evening	7:00	7:15	7:30	7:45	8:00	8:15	8:30	8:45	9:00	9:15	9:30	9:45	10:00	10:15	10:30	10:45	11:00	11:15	11:30	11:45	12:00					
FUNNEL VISION	Tangled (PG)  Open Captioning Funnel Vision											Monsters, Inc. (G) Funnel Vision		Guardians of the Galaxy (PG-13) Funnel Vision												
BUENA VISTA THEATRE	Dumbo (2019) (PG) Duration: 1 Hour 52 Minutes											Avengers: Infinity War (PG-13) Duration: 2 Hours 29 Minutes														
CHARACTERS	Minnie Preludes											Minnie DK4 Mid (S)		White Rabbit Lobby Atrium (P)		Mickey DK4 Mid (S)		Mickey DK5 Mid (S)								
	Mickey Preludes											Donald DK5 Mid (S)		Daisy DK5 Mid (S)		The Magic & Comedy of Jon Armstrong Walt Disney Theatre										
FUN FOR ALL AGES	Crafts: Easter Crafts Promenade Lounge		Disney Tunes Trivia Azure		The Magic & Comedy of Jon Armstrong Walt Disney Theatre											Mickey Mania D Lounge		Club D Dance Party D Lounge		Family Superstar Karaoke D Lounge						
	Disney Vacation Club Member Celebration D Lounge											Guitar Melodies With David Kenny Promenade Lounge				Guitar Melodies With David Kenny Promenade Lounge										
ADULTS	Pub Quiz Crown & Fin Pub		Cruise Staff DJ Azure											Intuition Azure		Gameshow: The Feud Azure		Cruise Staff DJ Azure								
	Music & Martinis with Bernadett Bihari Cadillac Lounge											1820 Society: Stir it, Blend it, Taste it. Cove Cafe		Late Night Piano Cadillac Lounge												
VIBE 14-17 YEARS OLD	Cards Tournament											Wii Challenge		Ice Breakers		Profiles		The Download		Heroes and Villains						
EDGE 11-14 YEARS OLD	GAGA Ball											Ice Breakers		Profiles		Taking it to The Edge		Heroes and Villains								
OCEANEER LAB 3-12 YEARS OLD	Oceaneer Rangers											GAGA Ball		Easter Face Paint		Lava Flow		Human Bingo		Youth Activities Open House						
OCEANEER CLUB 3-12 YEARS OLD	Welcome Party											Space Ranger Training		Make a Card for Someone Special		Once Upon a Time		Easter Crafts		Egg Hunt		MARVEL Super Hero Academy Avengers Assemble				

FOLD

**YOUTH ACTIVITIES OPEN HOUSE**  
A non-secured program with activities for families, adults and children to enjoy together.



# The Magic & Comedy of Jon Armstrong



## WALT DISNEY THEATRE

Deck 4, Forward

6:15 pm & 8:30 pm

As a courtesy to all Guests, we kindly advise that the saving of seats is **not** permitted in the Walt Disney Theatre.

Assistance is available at the entrance to the Walt Disney Theatre 30 minutes prior to show time.

### Character Experience Reservations

Port Adventures Desk, Deck 3, Midship - 12:00 pm - 2:00 pm

The following appearances require a reservation. Space is limited. For Guests who did not book online, a limited number of reservations are available for:

- Princess Gathering
- Frozen Gathering
- Disney Junior Character Breakfast

### Character Appearances

**JOIN THE LION GUARD**  
Disney's Oceaneer Club  
2:00 pm

**MICKEY'S SAIL-A-WAVE PARTY!**  
Deck 9 Stage - 4:30 pm

**MINNIE MOUSE**  
DK4 Mid (S)  
5:15 pm & 9:30 pm  
Preludes - 7:30 pm

**WHITE RABBIT**  
Lobby Atrium (P)  
5:30 pm & 9:45 pm

**SUPER HERO ORIGINS: SPIDER-MAN**  
Disney's Oceaneer Club  
5:30 pm

**CHIP & DALE**  
Preludes - 5:30 pm

**MICKEY MOUSE**  
DK4 Mid (S)  
5:45 pm & 10:00 pm  
Preludes - 8:00 pm

**DONALD DUCK**  
DK5 Mid (S) - 9:30 pm

**DAISY DUCK**  
DK5 Mid (S) - 10:00 pm

(S) Starboard Side - (P) Port Side

For details of daily Disney character appearances, refer to the Disney Cruise Line App, character line on the Navigator Grid, or the digital character board in the Lobby Atrium.

Lines close 15 minutes after advertised start time.

## SHIP DIRECTORY

### YOUTH ACTIVITIES

DISNEY'S OCEANEER CLUB	DECK 5, MID	12:00 PM - 3:30 PM
		4:30 PM - 12:00 AM
DISNEY'S OCEANEER LAB	DECK 5, MID	12:00 PM - 3:30 PM
		4:30 PM - 12:00 AM
EDGE	DECK 9, MID	12:00 PM - 3:30 PM
		4:30 PM - 12:00 AM
IT'S A SMALL WORLD NURSERY	DECK 5, AFT	12:00 PM - 3:30 PM
		5:30 PM - 11:00 PM
VIBE	DECK 10, MID	12:00 PM - 3:30 PM
		4:30 PM - 12:00 AM

### POOLS

Children under 12 years of age must have adult supervision in all pools.

AQUALAB	DECK 9, AFT	12:00 PM - 3:30 PM
		4:30 PM - 6:00 PM
DORY'S REEF	DECK 9, AFT	12:00 PM - 3:30 PM
		4:30 PM - 6:00 PM
GOOFY'S POOL	DECK 9, MID	12:00 PM - 3:30 PM
		6:00 PM - 10:00 PM
QUIET COVE POOL (18+)	DECK 9, FWD	12:00 PM - 3:30 PM
		4:30 PM - 11:00 PM
TWIST N' SPOUT	DECK 9, AFT	12:00 PM - 3:00 PM
		4:30 PM - 6:00 PM

Please note, "selfie sticks" are not permitted in any aquatic area.

Complimentary pool vests are available for children to use in the pools onboard.

They are located on the pool deck.

### RECREATION

CHILL SPA	DECK 9, FWD	12:00 PM - 10:00 PM
PORT ADVENTURES DESK	DECK 3, MID	12:00 PM - 3:30 PM
		4:30 PM - 8:30 PM
SENSES FITNESS CENTER (18+)	DECK 9, FWD	12:00 PM - 10:00 PM
WIDE WORLD OF SPORTS DECK	DECK 10, FWD	12:00 PM - 3:30 PM
		4:30 PM - 11:59 PM

### GENERAL INFORMATION

BUENA VISTA THEATRE	DECK 5, AFT	SHOWTIMES
CONNECT@SEA DESK	DECK 3, AFT	1:00 PM - 4:00 PM
		7:00 PM - 10:00 PM
DISNEY VACATION CLUB DESK	DECK 4, MID	5:00 PM - 10:30 PM
DISNEY VACATION PLANNING DESK	DECK 4, MID	7:00 PM - 8:30 PM
FUNNEL VISION	DECK 9, MID	SHOWTIMES
GUEST SERVICES	DECK 3, MID	24 HOURS
MEDICAL HEALTH CENTER	DECK 1, FWD	4:30 PM - 7:00 PM
PORT SHOPPING DESK	DECK 3, MID	7:00 PM - 8:30 PM
PRELUDES	DECK 4, FWD	SHOWTIMES
SENSES SPA AND SALON	DECK 9, FWD	12:00 PM - 10:00 PM
SHUTTERS PHOTO GALLERY	DECK 4, AFT	6:00 PM - 10:30 PM
WALT DISNEY THEATRE	DECK 4, FWD	SHOWTIMES

### SHOPPING

ART GALLERY	DECK 4, MID	
BIBBIDI BOBBIDI BOUTIQUE	DECK 10, FWD	12:00 PM - 3:00 PM
		5:00 PM - 9:00 PM
MICKEY'S MAINSAIL	DECK 4, FWD	6:00 PM - 11:00 PM
QUACKS	DECK 9, MID	
SEA TREASURES	DECK 3, FWD	6:30 PM - 10:30 PM
WHITE CAPS	DECK 4, FWD	6:00 PM - 11:00 PM

### TIME ZONE CHANGE

Remember to turn your clocks **FORWARD 1 HOUR** upon retiring on **SUNDAY** evening, or first thing **MONDAY** morning.



**EVENING ATTIRE** Cruise Casual

## DINING & LOUNGES

### LUNCH

CABANAS	DECK 9, AFT	12:00 PM - 3:00 PM
DAISY'S DE-LITES	DECK 9, AFT	12:00 PM - 3:30 PM
		4:30 PM - 7:00 PM
PINOCCHIO'S PIZZERIA	DECK 9, MID	12:00 PM - 3:30 PM
		4:30 PM - 6:00 PM
PETE'S BOILER BITES	DECK 9, AFT	12:00 PM - 3:30 PM
		4:30 PM - 6:00 PM
TRITON'S (À-LA CARTE)	DECK 3, MID	11:45 AM - 1:30 PM

### DINNER

ANIMATOR'S PALATE	DECK 4, AFT	5:45 PM & 8:15 PM
PALO (18+)	DECK 10, AFT	6:00 PM - 8:30 PM
PETE'S BOILER BITES	DECK 9, AFT	6:00 PM - 9:30 PM
TIANA'S PLACE	DECK 3, AFT	5:45 PM & 8:15 PM
TRITON'S	DECK 3, MID	5:45 PM & 8:15 PM

### LATE NIGHT SNACKS

CROWN & FIN PUB (18+ AFTER 9:00 PM)	DECK 3, FWD	10:30 PM - 11:30 PM
PINOCCHIO'S PIZZERIA	DECK 9, MID	9:30 PM - 12:00 AM
PROMENADE LOUNGE	DECK 3, AFT	10:30 PM - 11:30 PM

### ADDED FEATURES

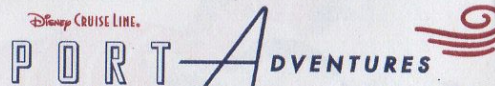
BEVERAGE STATION	DECK 9, AFT, PORT SIDE	24 HOURS
EYE SCREAM	DECK 9, MID	12:00 PM - 3:30 PM
		4:30 PM - 11:00 PM
ROOM SERVICE	DIAL 4330	OPENS AT 1:30 PM

### ENTERTAINMENT - LOUNGES - BARS

Adults must be 21 and older to consume alcoholic beverages.

AZURE (18+ AFTER 9:00 PM)	DECK 3, FWD	9:30 PM - 1:00 AM
CADILLAC LOUNGE (18+)	DECK 3, FWD	6:00 PM - 12:00 AM
COVE CAFE (18+)	DECK 9, MID	11:45 AM - 12:00 AM
CROWN & FIN PUB (18+ AFTER 9:00 PM)	DECK 3, FWD	11:45 AM - 12:00 AM
D LOUNGE	DECK 4, MID	SHOWTIMES
PINOCCHIO'S PIZZERIA	DECK 9, MID	11:45 AM - 12:00 AM
PRELUDES	DECK 4, FWD	SHOWTIMES
PROMENADE LOUNGE	DECK 3, AFT	11:45 AM - 12:00 AM
SIGNALS (18+)	DECK 9, FWD	11:45 AM - 10:00 PM
SULLY'S SIPS	DECK 9, MID	11:45 AM - 5:30 PM

Public Health Advisory: Consuming raw or under-cooked meats, poultry, seafood, shellfish, or eggs may increase your risk for food borne illness, especially if you have certain medical conditions.



Explore and more with our carefully selected Port Adventures. Visit the Port Adventures Desk, Deck 3, Midship to find out more.

### IMPORTANT NUMBERS

Fire/Security: 7-3001  
Medical EMERGENCY: 7-3000  
Health Center: 7-1927