

# VOYAGE NAVIGATOR



FRIDAY  
APRIL 5, 2019

TO  
WEDNESDAY  
APRIL 10, 2019

## CRUISE HIGHLIGHTS

### FRIDAY

MIAMI, FLORIDA  
Port Departure: 5:00 pm  
All Aboard: 4:00 pm  
Attire: Cruise Casual



**SHOWTIME: KYLE KNIGHT & MISTIE**  
Walt Disney Theatre  
6:15 pm & 8:30 pm

### SATURDAY

KEY WEST, FLORIDA  
All Ashore: 7:30 am  
All Aboard: 3:30 pm  
Attire: Cruise Casual



**TWICE CHARMED**  
Walt Disney Theatre  
6:15 pm & 8:30 pm

### SUNDAY

NASSAU, BAHAMAS  
All Ashore: 9:30 am  
All Aboard: 5:15 pm  
Attire: Pirate or Cruise Casual



**DUMBO (PG)**  
Walt Disney Theatre  
5:15 pm & 8:00 pm

### MONDAY

DISNEY CASTAWAY CAY  
All Ashore: 8:30 am  
All Aboard: 4:45 pm  
Attire: Cruise Casual



**TANGLED: THE MUSICAL**  
Walt Disney Theatre  
6:15 pm & 8:30 pm

### TUESDAY

DAY AT SEA  
Attire: Cruise Casual



**DISNEY DREAMS: AN ENCHANTED CLASSIC**  
Walt Disney Theatre  
6:15 pm & 8:30 pm

Subject to change.

## WELCOME ABOARD!

### YOUR STATEROOM & LUGGAGE

Staterooms will be ready at 1:30 pm. To allow your Stateroom Host/ess time to prepare your room, please do not remove the blue stanchion straps. Stateroom hosts will deliver luggage throughout the day until 5:30 pm.

### STATEROOMS WITH BUNK BEDS

Bunk beds are recessed into the ceiling and will be prepared during evening turndown service by your Stateroom Host/ess.

### STATEROOM SAFE

Each stateroom is equipped with a secured storage safe. Instructions for use are located on the safe.

### TO CHANGE DINING ASSIGNMENT

Requests for different seating times will be taken today:

• 12:30 pm - 3:00 pm; Book in Promenade Lounge, Deck 3, Aft or please dial 7-1831 and leave a voicemail.

### PALO DINING RESERVATIONS

Reservations are required and will be taken on a first come basis today:

• 12:30 pm - 3:00 pm in Promenade Lounge, Deck 3, Aft, or please dial 7-6843 and leave a voicemail.

**Adult Exclusive Dining Opportunity!** Guests are invited to make 2 dinner reservations at our adult-exclusive restaurant, Palo. This includes one reservation on embarkation evening and one more on another night of the cruise.

### DINNER

5:45 pm - First seating    8:15 pm - Second seating

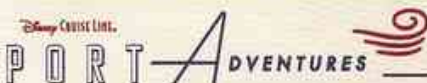
Please check your Key To The World Card for details of your dining rotation, and bring it to your specific dining location. There is no need to wait in line prior to dinner. Dining Rooms open at designated seating times and your table is reserved each night of your cruise.

A = Animator's Palate, Deck 4, Aft    L = Lumière's, Deck 3, Midship    R = Rapunzel's Royal Table, Deck 3, Aft

DOWNLOAD THE NEW  
**DISNEY CRUISE LINE  
NAVIGATOR APP**  
BEFORE YOU SAIL AWAY



Available  
on iOS  
and  
Android



Create the most memorable experiences during your Disney Cruise Line vacation with Port Adventures! Our Port Adventures are designed for you to see the best our ports have to offer. Stop by the Port Adventures Desk, Deck 3, Midship where our friendly team will be happy to assist you plan your adventure!

There is an adventure for everyone on your Disney Magic® vacation.

IMPORTANT NUMBERS    Fire/Security: 7-3001    Medical Emergency: 7-3000    Health Center: 7-1927

# MORE TO ENJOY ONBOARD

## NEW SPRING 2020 ITINERARIES

New Spring 2020 Itineraries announced! Experience sailings to the Caribbean, the Bahamas, Mexico, and Hawaii with your family! And for the very first time, sail from New Orleans to the Caribbean or Bahamas on Disney Wonder. Visit Disney Vacation Planning, Deck 4, Midship for more information. Disney Vacation Planning tends to get busy on the last day of sailing. Don't miss the opportunity to plan your next Disney vacation.

## DISNEY VACATION CLUB® MEMBER CELEBRATION

Join us as we welcome you onboard with a fun, interactive event where you can catch the latest updates at Disney Vacation Club! Please see a Disney Vacation Club Cast Member on Deck 4, Midship or call 7-2805 from your stateroom phone for more information.

## PORT SHOPPING INFORMATION

Meet Dru, your Port Shopping Guide, for hints, tips and know how when it comes to shopping ashore this cruise! Dru has great recommendations for the whole family and will show you how to maximize your time in our ports of call with money saving tips! Visit Dru at the Port Shopping Desk, Deck 3, Midship between 7:30 pm & 8:30 pm tonight for a free gift.

## Connect@Sea

### FREE INTERNET EMBARKATION DAY SPECIAL

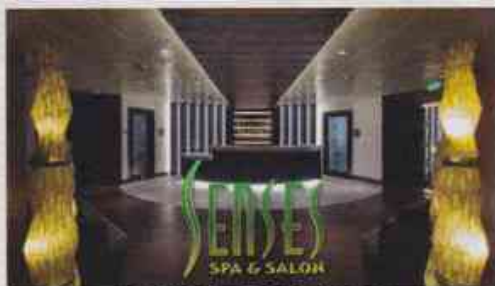
Sign up for a free 50 MB Internet package today and enjoy it throughout the cruise! This offer is only available from noon to midnight on the day your cruise begins. On your wireless device, simply find the "DCL-Guest" Wi-Fi Network, go to www.dclguest.com to create an account, and get your free 50 MB of data to start sharing your memories even before you leave port! If you have any questions, ask our Connect@Sea Expert located at Deck 3, Aft. No purchase necessary. The free 50 MB package can only be used for the duration of the cruise. Only one free package per stateroom, but everyone can share it. Unused data from a package will not be reimbursed and it is non-transferable between voyages or ships.

### RELIGIOUS SERVICES

Groups who need a location to practice their faith may contact Guest Services for availability information.



## SENSES SPA & SALON



### DECK 9, FORWARD

Extension 7-1465

#### RAINFOREST

Come enjoy our serenity lounge, with heated chairs, dry sauna, aromatherapy steam rooms and rainfall, misting showers.

Couples Cruise Pass - \$169 - Single Cruise Pass - \$114

#### IONITHERMIE

Lose between 1 - 8 inches? Speed up your metabolism. Firm muscle tone. Improve appearance of cellulite. \$155/1 session or \$388/3 sessions.

#### ONBOARD ACUPUNCTURE

Naturally effective for pain, arthritis, sea sickness, stress, digestion, weight loss, and much more. \$150/session or \$550/5 sessions.

#### ELEMIS BIOTEC

8 different Facial treatments available based on your specific concerns or needs. Technology turbo-charges the concept of touch. The clinically proven result is visibly healthy, nourished and energized skin.

#### REJUVENATION SPA CONSULTATIONS

Ready to enhance your natural beauty? Book your free Facial Rejuvenation consultation with our Rejuvenation Doctor at the Senses Spa.

**AN 18% AUTO GRATUITY IS ADDED TO ALL SENSES SPA SERVICES.**

## MERCHANDISE SHOPPING



### DECK 4, FORWARD

#### THE CROWN JEWELRY

Visit The Crown Jewelry, located on Deck 4, Midship, to discover stylish timepieces and fine jewelry. Discover the Crown of Light Diamonds, Safi Kilima Tanzinites and John Hardy's handcrafted jewelry, as well as luxury watches by Hublot and Breitling.

#### HELPFUL SHOPPING TIP

While shopping onboard, you may collect your items from both stores before proceeding to checkout at any register. No need to have to wait in line in each store to pay for your items separately! Mickey's Mainsail and White Caps, Deck 4, Forward.

#### H2O PLUS SPA PRODUCTS

Can't get enough of your stateroom's moisturizing H2O Plus Spa products? From shampoo and conditioner to body lotion and after sun care, take home their marine-rich formulas available in White Caps, Deck 4, Forward.

#### BIBBIDI BOBBIDI BOUTIQUE

A makeover fit for a princess! Fairy Godmothers-in-Training are ready with magic and pixie dust to give your Prince and Princess the transformation of a lifetime. Make your reservations by visiting Bibbidi Bobbidi Boutique, Deck 10, Forward, Port Side, or dialing extension 7-1492. Limited space available.

**DUE TO PORT REGULATIONS, WHEN THE SHIP IS DOCKED, THE STORES WILL REMAIN CLOSED.**

## SHUTTERS PHOTO GALLERY



### DECK 4, AFT

#### WELCOME ABOARD RAFFLE

Your embarkation photos will be available for viewing at 6:30pm. Visit Shutters on Deck 4 AFT and drop your raffle coupon for a chance to win a 10 Digital Photo package with a \$149.95 value.

#### OUR CRUISE PHOTOS DIGITAL!

Ask a friendly photographer about our Cruise digital Photos! And the incredible value of an All Inclusive digital photo package, which includes all of your stateroom's photos. Visit Shutters today as supplies are limited. \*Terms and conditions apply.

#### PRIVATE STUDIO PORTRAITURE

Book our exclusive and contemporary Private Studio experience today and capture these memories: No obligation to purchase. Black and White only.

#### PHOTO BOOK

Turn your magical vacation memories into an impressive keepsake, a personal one of a kind Photo Book. Fill every page with memories of your cruise vacation. Orders close at 10:00 pm on the last day of the cruise.

**PHOTOS ARE AVAILABLE FOR VIEWING ON OUR INTERACTIVE PHOTO KIOSKS APPROXIMATELY FIVE HOURS AFTER BEING TAKEN AND ARE ONLY AVAILABLE FOR PURCHASE DURING THIS CRUISE.**

## IMPORTANT INFORMATION

**Security Notice/Unaccompanied Minor Ashore**  
All Guests (including children) who wish to disembark or embark the ship are required to present their Key to the World card at the gangway. A photo ID is also required for those Guests who are 18 years of age or older. Guests under the age of 18 are required to have a Parent, Guardian or other responsible adult complete the "Traveling with Minors" section of "My Online Check-In" prior to sailing or sign an authorization form at the Guest Services Desk if they wish to go ashore unaccompanied or with any adult from another stateroom.

**Insect Repellent Advisory**  
The Centers for Disease Control and Prevention recommends wearing long-sleeved shirts and pants along with insect repellent to protect against mosquitoes and related illnesses when going ashore. Complimentary insect repellent is available on the pier as you exit the ship. Insect repellent is also available for purchase in White Caps. When using both sunscreen and insect repellent, use sunscreen first and apply insect repellent on top of sunscreen.

**Corridor Quiet Hours**  
As a courtesy to all our Guests, please recognize quiet hallway hours from 10:00 pm till 8:00 am.

**No Reserved Seats Policy**  
As a courtesy to all our Guests, we kindly advise that the saving of seats is not permitted in the Walt Disney Theatre, and the saving of the sun loungers is not permitted on Deck 9 and 10. Items left unattended will be returned to lost and found at Guest Services, Deck 3 Midship.

**Cold and Flu Reminder**  
Please wash hands frequently and thoroughly, particularly before meals. Contact the Health Center by dialing 7-1927, should anyone in your party become ill.

**Incident Weather**  
For the safety of all Guests, outdoor events may be changed due to unforeseen weather conditions.

**Smoking**  
For the comfort of our Guests, the following areas are designated as smoking areas:  
Deck 9, Forward, Port Side by 6:00 am only (all of Deck 4 is non-smoking from 6:00 am to 6:00 pm)  
Smoking is prohibited inside all Guest staterooms and on stateroom verandahs. Guests found smoking in their staterooms or on their verandahs will be charged a \$250 stateroom recovery fee. Electronic cigarettes may only be used in designated smoking areas.

**Walt Disney Theatre**  
Theatrical performances may use artificial fog, strobe lights, pyrotechnics and other special effects. For the safety of our performers and the comfort of those around you, the use of any photography, video recording device or any electronic equipment is prohibited.

**Verandah Safety**  
Please do not leave any personal items on your verandah that may be blown overboard or present a fire hazard if left unattended. Do not throw anything over the ship's side. Guests should not sit, lean or climb on the railing or leave children unattended on the verandah. Do not open the verandah and stateroom doors simultaneously as this may create a wind effect and could cause the doors to slam unexpectedly.

# YOUTH ACTIVITIES INFO & HIGHLIGHTS



## Dine & Play

As a convenience for families dining at 8:15 pm, our Youth Activities Counselors will be available at 9:15 pm at the entrance of Lumiere's, at 9:30 pm at the entrance of Animator's Palate and 9:45 pm at the entrance of Rapunzel's Royal Table to bring registered children to join the fun in Disney's Oceaneer Club and Disney's Oceaneer Lab.

## Youth Activities Open House

Open House is an opportunity for all to come and participate in a variety of exciting activities and free time in the Oceaneer Club, Oceaneer Lab, Edge and Vibe throughout the cruise. During these times secured programming will still be offered in the other venue for those looking to check their children into care.

## Youth Activities Venue Tour

Come and take a tour of Disney's Oceaneer Club and Disney's Oceaneer Lab. This informative tour will give you the information you need to know about our exciting spaces and activities offered for children ages 3-12. Please see your Personal Navigator or the Navigator App for times.



3 - 12 years old

## STITCH'S GREAT ADVENTURE

Stitch needs your help in trying to capture ten of his lost cousins before they cause all kinds of problems on the ship!

## MICKEY'S PUZZLE PLAYTIME

Come and play with Mickey & friends as they share their favorite games, puzzles and dances!

## DISNEY ROYAL ACADEMY

Hear ye! Hear ye! All boys and girls are invited to become part of the Oceaneer Royal Court. Learn all about your favorite Disney Prince and Princesses, create your own royal garb and become one of the most powerful in the land. Disney Royal Academy is in session!



3 - 12 years old

## SUPER SLOPPY SCIENCE

Join Professor Make-O-Mess in some of the most extreme experiments you will ever see in the world of Super Sloppy Science!

## PLUTO'S PAJAMA PARTY

Bring the little ones in their pajamas but there will be anything but sleep when Pluto and friends host the ultimate slumber party!

## PISTON CUP

It's Dinoco time and you're part of the pit crew! Design your own race car and see if you've got what it takes to end up in the winner's circle!



11 - 14 years old

## HEROES VS. VILLAINS

Join your favorite hero or villain team on a series of activities that will take place throughout the cruise.

## THAT'S HILARIOUS

Ever wanted to show off your comedy skills? Then be a part of the cast for the crazy improv show "That's Hilarious" and put on a live show for your friends.



14 - 17 years old

## HAUNTED MANSION FAMILY PORTRAITS

Grim grinning ghosts come out to socialize as teens get transformed in a ghoulish photo shoot that is guaranteed to bring the spooks out for a swinging wake!

## HOMECOMING

Come and join your fellow teens in our very own version of "Homecoming" and dance the night away.

# BUENA VISTA THEATRE

Deck 5, Midship

## FEATURE MOVIES THIS VOYAGE

### FRIDAY - MIAMI, FLORIDA

5:30 pm	PG	The Incredibles 2
8:15 pm	PG	The Incredibles 2
10:45 pm	PG	Ralph Breaks the Internet

### SATURDAY - KEY WEST, FLORIDA

8:30 am	PG-13	Captain Marvel	Open Captioning
12:15 pm	PG	The Incredibles 2	
2:45 pm	PG	Ralph Breaks the Internet	
5:15 pm	PG	Mary Poppins Returns	
8:15 pm	PG	Mary Poppins Returns	
11:00 pm	PG-13	Captain Marvel	3D

### SUNDAY - NASSAU, BAHAMAS

9:30 am	PG	Mary Poppins Returns	
12:15 pm	PG	Ralph Breaks the Internet	
2:45 pm	PG-13	Captain Marvel	
5:30 pm	PG	Ralph Breaks the Internet	3D
8:15 pm	PG	Ralph Breaks the Internet	3D
10:45 pm	G	Dumbo (2019)	

### MONDAY - DISNEY CASTAWAY CAY

10:00 am	PG-13	Captain Marvel	3D
12:45 pm	G	Dumbo (2019)	
3:00 pm	PG	Ralph Breaks the Internet	
5:30 pm	G	Dumbo (2019)	3D
8:15 pm	G	Dumbo (2019)	3D
10:30 pm	PG	Mary Poppins Returns	

### TUESDAY - DAY AT SEA

8:30 am	G	Dumbo (2019)	Open Captioning
11:45 am	PG	Mary Poppins Returns	
2:30 pm	G	Dumbo (2019)	
5:15 pm	PG-13	Captain Marvel	
8:15 pm	PG-13	Captain Marvel	
10:45 pm	G	Dumbo (2019)	

Subject to change.



## ADULT ACTIVITY HIGHLIGHTS



**1820 SOCIETY (GUESTS 18-20 YEARS ONLY)**  
1820 Society is an exclusive option for young adult Guests. Come meet fellow passengers and learn about the excellent activities that the Disney Magic offers to create the perfect cruise experience.



**80'S FLASHBACK**  
The 80's are back! Join your Cruise Staff team, in testing your 80's knowledge in this high energy 80's revival.



**ANYONE CAN COOK**  
Every Chef has a specialty, and ours is no exception. Get a taste of perfection with each recipe.



**KRAZY KARAOKE**  
Take to the stage, grab a microphone and sing your favorite tunes with your Club Host and DJ.



**MATCH YOUR MATE**  
It's time to play everyone's favorite couples game show, Match Your Mate!



*Senses Spa & Salon has a variety of seminars and fitness classes available throughout the cruise. Pamper yourself with therapeutic spa treatments of heat, steam, rain and water in luxurious and tranquil private rooms. Deck 9, Forward.*

### BEVERAGE SEMINARS

*Your Beverage team has a host of tastings and seminars to entertain and educate you. Stop by Lumière's, Deck 3, Midship, 12:00 - 3:00 pm or Guest Services, Deck 3, Midship after today to pre-book these experiences (nominal fee applies).*

- Stem to Stem Wine Tasting -
- Cognac Tasting - Whisky Tasting -
- Tequila & Margarita Tasting -

## FEATURED VARIETY ACTS THIS VOYAGE



**THE MAGIC & ILLUSION OF KYLE KNIGHT & MISTIE**  
Las Vegas illusionists Kyle and Mistie Knight have appeared on TV's "Fool Us" and "Now You See It," and were the grand-prize winners on the magician competition show "Wizard Wars." Together they perform their magic with a bold and modern style, and allow their audience to get up close and involved in ways they've never seen before.



**THE VENTRILOQUISM & COMEDY OF KIERAN POWELL**  
Comical singing ventriloquist, Kieran Powell is without a doubt one of the UK's finest variety acts and one of the world's top ventriloquists. He has been described as "the act that every puppet's talking about". Over the past few years he has entertained tens of thousands of people with his truly original and highly imaginative award-winning act.

## FUN FOR ALL AGES HIGHLIGHTS



**MICKEY'S SAIL-A-WAVE PARTY!**  
Mickey's Sail-A-Wave Party is a high energy, Disney Bounding, countdown celebration. Say goodbye to work and school and hello to vacation! Mickey and the gang throw a Sail-A-Wave celebration you won't forget!



**A PIRATES LIFE FOR ME**  
Calling all Pirates, we be! If ye have an adventurous spirit or pirate savvy, come spin the "Wheel of Destiny" fer a treasure trove of fun be ripe for the taking in this action packed pirate game show.



**DISNEY JUNIOR PIRATE & PRINCESS DANCE PARTY**  
Calling all Pirates and Princesses! Come join us for a family dance party featuring music and fun activities from Jake & the Neverland Pirates and Sofia the First. Whether you favor tiaras or treasure chests, there's something for you at our Disney Junior Pirate & Princess Dance Party!



**DISNEY VACATION CLUB GROUP PREVIEW**  
Join us for our interactive group presentation to learn about taking magical vacations year after year! For more information, please see a Disney Vacation Club Cast Member on Deck 4, Midship, or call 7-2805 from your stateroom phone.



**FAMILY SUPERSTAR KARAOKE**  
Join your Cruise Staff and sing along to your favorite song, fun for everyone.



**JACK-JACK'S INCREDIBLE DIAPER DASH**  
Calling all baby cruisers! It's time to take to the mat to see who's the fastest crawler of the seven seas! Register your baby 15 minutes prior to the big race.



**JACKPOT BINGO**  
CASH prizes and raffle prizes to be won in our family friendly Bingo sessions with your Cruise Staff. Those under the age of 18 must be accompanied by an adult to play.



**PIRATES IN THE CARIBBEAN DECK PARTY**  
Yer Disney Friends are all set for a swashbucklin' good time! It's a Pirate Celebration, me hearties! Hoist yourself to Deck 9 to enjoy a rowdy buccaneer bash we call Pirates IN the Caribbean Deck Party. (Weather Permitting)



**SALUDOS AMIGOS FIESTA**  
Come see what Donald and his friends are up to this time. Bring the family out to this interactive dance party featuring fun Latin music! Your family will learn to salsa, merengue and just have a Latin good time!



**SO YOU THINK YOU KNOW YOUR FAMILY?**  
This fun-filled family game show is always full of surprises. Find out how well you know, or don't know your family!



**THE INSIDE OUT GAME**  
Make new memories using the memories you already have. Embrace joy and play against anger, fear & disgust in this one-of-a-kind game show based on the Pixar movie Inside Out!



**WAKE UP WITH DISNEY JUNIOR**  
What happens when you experience unlimited fun with your favorite Disney Junior shows? You get an exciting dance party designed especially for preschoolers ages seven and under.



**WHO WANTS TO BE A MOUSEKETEER?**  
Your chance to get into the "hot seat" and win limited edition prizes. Or, play along as part of our live studio audience.

Please check your daily Personal Navigator for all times and locations.

# WELCOME ABOARD!

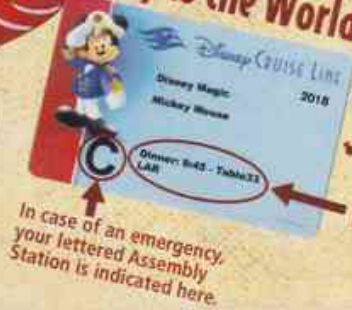


## FAMILY DECK PARTY!

Mickey's Sail-A-Wave Deck Party is a high energy, Disney Bounding, countdown celebration happening atop the Disney Magic! Wave goodbye to work and school, and hello to vacation! Mickey and the gang throw a Sail-A-Wave celebration you won't forget!!

Deck 9 Stage, Midship,  
4:30 pm

## Key to the World Card Information



In case of an emergency, your lettered Assembly Station is indicated here.

- Your dining time and table number for the cruise are located here.
- Dining locations and rotation are indicated by letters under your dinner time.
  - L - Lumiere's, Deck 3, Midship
  - A - Animator's Palate, Deck 4, Aft
  - R - Rapunzel's Royal Table, Deck 3, Aft

Afternoon	1:45	2:00	2:15	2:30	2:45	3:00	3:15	3:30	3:45	4:00	4:15	4:30	4:45	5:00	5:15	5:30	5:45	6:00	6:15	6:30	6:45	
FUNNEL VISION		Pixar Short Films (G) Funnel Vision																				
BUENA VISTA THEATRE			Port Shopping Talk Buena Vista Theatre																			
CHARACTERS																						
FUN FOR ALL AGES		Tour Del Barco Fathoms	Walking Ship Tour Fathoms	Youth Activities Tour Oceaneer Club	Youth Activities Tour Oceaneer Club																	
ADULTS		Spa Open House Senses Spa & Salon		Spa Raffle Senses Spa & Salon																		
VIBE 14-17 YEARS OLD		Youth Activities Open House & Registration																				
EDGE 11-14 YEARS OLD		Youth Activities Open House & Registration																				
OCEANEER LAB 9-12 YEARS OLD		Youth Activities Open House & Registration	Youth Activities Tour																			
OCEANEER CLUB 3-8 YEARS OLD		Youth Activities Open House & Registration	Youth Activities Tour																			

**Mandatory Guest Assembly Drill 4:00 pm**  
(All Guests must attend)

All ship services will be suspended during this time.

Refer to the posted drill instructions on the back of your stateroom door prior to heading to Deck 4. Please bring your Key to the World Card.

You will not need your life jacket for the Guest Assembly Drill.

Your Assembly Station is indicated on your Key To The World card.



Evening	7:00	7:15	7:30	7:45	8:00	8:15	8:30	8:45	9:00	9:15	9:30	9:45	10:00	10:15	10:30	10:45	11:00	11:15	11:30	11:45	12:00	
FUNNEL VISION		Coco (PG) Open Captioning Funnel Vision																				
BUENA VISTA THEATRE																						
CHARACTERS			Pluto DK4 Mid (S)	Belle Preludes	Mickey Lobby Atrium				Tiana Preludes	Minnie Lobby Atrium	Ariel Preludes	Mickey Lobby Atrium										
FUN FOR ALL AGES		Cinderella Preludes	Daisy DK5 Mid (S)	Donald DK5 Mid (S)																		
ADULTS		Who Wants to be a Mouseketeer? D Lounge	Disney Vacation Club Member Celebration Fathoms	Family Dance Party with Supernova Duo Promenade Lounge																		
VIBE 14-17 YEARS OLD		50's & 60's Music Trivia O'Galls Pub																				
EDGE 11-14 YEARS OLD		All That Jazz with Bongli Maestro Keys																				
OCEANEER LAB 9-12 YEARS OLD		Cards Tournament	Profiles	Your Pick: Games Galore	Ice Breakers	Meet Your Counselors	Heroes and Villains															
OCEANEER CLUB 3-8 YEARS OLD		Wii Challenge	Four Square	Craft Corner	Profiles	Meet Your Counselors	Ice Breakers	Heroes and Villains														
		Explore the Lab!	Super Sloppy Science	GAGA Ball	Ice Breakers	Mad Hatter's Unbirthday Party	Wii Challenge															
		Explore the Club	Toy Story Boot Camp	Memory Wall	Human Bingo	Four Square	Dance Party															

DRINK OF THE DAY  
Ponder Punch (Alcoholic)  
Eggnog Chiller (Non-Alcoholic)

Fold along this dotted line and place me with you  
so you can share any of the fun!

With Activities Open House  
A non-secured program with activities for families, adults and children to enjoy together.



**The Magic & Illusion of  
KYLE KNIGHT  
& MISTIE**

**WALT DISNEY THEATRE**  
Deck 4, Forward  
6:15 pm & 8:30 pm

As a courtesy to all Guests, we kindly advise that the saving of seats is **not** permitted in the Walt Disney Theatre.

Assistance is available at the entrance to the Walt Disney Theatre 30 minutes prior to show time.

**Character Meet & Greet Ticket Distribution**

Port Adventures Desk, Deck 3, Midship - 12:00 pm - 2:00 pm  
The following appearances require a reservation. Space is limited.

For Guests who did not book online, a limited number of reservations are available for

- Princess Gathering
- Frozen Gathering

**Character Appearances**

**MICKEY'S SAIL-A-WAVE PARTY!**  
Deck 9 Stage - 4:30 pm

**DAISY DUCK**  
DK4 Mid (S) - 5:15 pm  
DK5 Mid (S)  
7:30 pm & 9:30 pm

**GOOFY**  
Lobby Atrium (P) - 5:30 pm  
DK3 Mid (S)  
8:00 pm & 10:00 pm

**DONALD DUCK**  
DK4 Mid (S) - 5:45 pm  
DK5 Mid (S)  
8:00 pm & 10:00 pm

**MICKEY MOUSE**  
Lobby Atrium (P) - 6:00 pm,  
8:00 pm & 10:15 pm

**CINDERELLA**  
Preludes - 7:15 pm

**MINNIE MOUSE**  
Lobby Atrium (P)  
7:30 pm & 9:45 pm

**PLUTO**  
DK4 Mid (S)  
7:30 pm & 9:30 pm

**BELLE**  
Preludes - 7:45 pm

**PRINCESS TIANA**  
Preludes - 9:30 pm

**ARIEL**  
Preludes - 10:00 pm

(S) Starboard Side - (P) Port Side

For detailed character appearances, refer to the characters tab on the Disney Cruise Line App, or the digital character board in the Lobby Atrium. Lines close 15 minutes after advertised start time.

**SHIP DIRECTORY**

**YOUTH ACTIVITIES**

DISNEY'S OCEANEER CLUB	DECK 5, MID	12:00 PM - 4:30 PM	3:30 PM - 12:00 AM
DISNEY'S OCEANEER LAB	DECK 5, MID	12:00 PM - 4:30 PM	3:30 PM - 12:00 AM
EDGE	DECK 9, MID	12:00 PM - 4:30 PM	3:30 PM - 12:00 AM
IT'S A SMALL WORLD NURSERY	DECK 5, AFT	12:00 PM - 4:30 PM	3:30 PM - 11:00 PM
VIBE	DECK 10, MID	12:00 PM - 4:30 PM	3:30 PM - 12:00 AM

**POOLS**

\*Children under 12 years of age must have adult supervision in all pools.

AQUADUNK	DECK 10, MID	12:00 PM - 6:00 PM	3:00 PM - 8:00 PM
AQUALAB	DECK 9, AFT	12:00 PM - 4:30 PM	3:30 PM - 8:00 PM
GOOFY'S POOL	DECK 9, MID	12:00 PM - 6:00 PM	3:30 PM - 10:00 PM
NEPHEWS' SPLASH ZONE	DECK 9, AFT	12:00 PM - 4:30 PM	3:30 PM - 6:00 PM
QUIET COVE POOL (18+)	DECK 9, FWD	12:00 PM - 4:30 PM	11:00 PM - 8:00 PM
TWIST 'N' SPOUT	DECK 9, AFT	12:00 PM - 4:30 PM	3:00 PM - 6:00 PM

Please note, "selfie sticks" are not permitted in any aquatic areas.

Complimentary pool vests are available for children to use in the pools onboard. They are located on the pool deck.

**RECREATION**

PORT ADVENTURES DESK	DECK 3, MID	12:00 PM - 4:30 PM	3:30 PM - 6:00 PM
		7:00 PM - 8:30 PM	
SENSES FITNESS CENTER (18+)	DECK 9, FWD	11:30 AM - 7:00 PM	10:00 PM - 24 HOURS
WIDE WORLD OF SPORTS	DECK 10, FWD		24 HOURS

**GENERAL INFORMATION**

BUENA VISTA THEATRE	DECK 5, AFT	SHOWTIMES
CONNECT@SEA DESK	DECK 3, AFT	1:00 PM - 7:00 PM
		3:30 PM - 10:00 PM
DISNEY VACATION CLUB DESK	DECK 4, MID	5:30 PM - 9:00 PM
		6:30 PM - 10:00 PM
DISNEY VACATION PLANNING	DECK 4, MID	7:30 PM - 8:30 PM
FUNNEL VISION	DECK 9, MID	SHOWTIMES
GUEST SERVICES	DECK 3, MID	24 HOURS
HAIR BRANDING	DECK 9, MID	
MEDICAL HEALTH CENTER	DECK 1, FWD	4:30 PM - 7:00 PM
PORT SHOPPING DESK	DECK 3, MID	5:00 PM - 7:30 PM
		6:00 PM - 8:30 PM
PRELUDES	DECK 4, FWD	SHOWTIMES
SENSES SPA AND SALON	DECK 9, FWD	11:30 AM - 6:00 PM
SHUTTERS PHOTO GALLERY	DECK 4, AFT	6:00 PM - 10:30 PM
WALT DISNEY THEATRE	DECK 4, FWD	SHOWTIMES

**SHOPPING**

BIBBIDI BOBBIDI BOUTIQUE	DECK 10, FWD	12:00 PM - 5:00 PM	3:00 PM - 9:00 PM
MICKEY'S MAINSAIL	DECK 4, FWD	6:00 PM - 8:00 PM	11:00 PM - 11:00 PM
SEA TREASURES	DECK 3, FWD	6:00 PM - 8:00 PM	11:00 PM - 11:00 PM
THE CROWN JEWELRY	DECK 4, AFT	6:00 PM - 8:00 PM	11:00 PM - 11:00 PM
WHITE CAPS	DECK 4, FWD	6:00 PM - 8:00 PM	11:00 PM - 11:00 PM

DUE TO PORT REGULATIONS, WHEN THE SHIP IS DOCKED, THE STORES MUST REMAIN CLOSED.

**EVENING ATTIRE | Cruise Casual**

**DINING & LOUNGES**

**LUNCH**

CABANAS	DECK 9, AFT	12:00 PM - 4:15 PM	3:15 PM - 6:00 PM
DAISY'S DE LITES	DECK 9, AFT	12:00 PM - 4:15 PM	3:30 PM - 6:00 PM
DUCK-IN DINER	DECK 9, AFT	12:00 PM - 4:15 PM	3:30 PM - 6:00 PM
LUMIERE'S	DECK 3, MID	11:45 AM - 4:15 PM	1:45 PM - 6:00 PM
PINOCCHIO'S PIZZERIA	DECK 9, MID	12:00 PM - 4:15 PM	3:30 PM - 6:00 PM

**DINNER**

ANIMATOR'S PALATE	DECK 4, AFT	5:45 PM & 8:15 PM
DUCK-IN DINER	DECK 9, AFT	6:00 PM - 10:00 PM
LUMIERE'S	DECK 3, MID	5:45 PM & 8:15 PM
PAID (18+)	FOR RESERVATIONS CALL 7-840 DECK 10, AFT	6:00 PM - 8:30 PM
RAPUNZEL'S ROYAL TABLE	DECK 3, AFT	5:45 PM & 8:15 PM

**LATE NIGHT SNACKS**

O'GILLS PUB	DECK 3, FWD	10:45 PM - 9:30 PM	11:30 PM - 12:00 AM
PINOCCHIO'S PIZZERIA	DECK 9, MID	9:30 PM - 10:45 PM	12:00 AM - 11:30 PM
PROMENADE LOUNGE	DECK 3, AFT	10:45 PM - 11:30 PM	

**ADDED FEATURES**

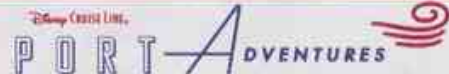
EYE SCREAM	DECK 9, AFT	12:00 PM - 4:15 PM	3:30 PM - 11:00 PM
BEVERAGE STATION	DECK 9, AFT		24 HOURS
ROOM SERVICE	DIAL 7-4330		24 HOURS

**ENTERTAINMENT - LOUNGES - BARS**

Adults must be 21 and older to consume alcoholic beverages.

AFTER HOURS	DECK 3, FWD	(AFTER 9:00 PM, ADULTS ONLY)
COVE CAFE (18+)	DECK 9, MID	11:45 AM - 12:00 AM
D LOUNGE	DECK 4, MID	SHOWTIMES
FATHOMS (18+ AFTER 9:00 PM)	DECK 3, FWD	9:30 PM - 1:00 AM
FROZONE TREATS	DECK 9, AFT	11:45 AM - 6:00 PM
KEYS (18+)	DECK 3, FWD	6:00 PM - 12:00 AM
O'GILLS PUB (18+ AFTER 9:00 PM)	DECK 3, FWD	11:45 AM - 12:00 AM
PINOCCHIO'S	DECK 9, MID	11:45 AM - 12:00 AM
PRELUDES	DECK 4, FWD	SHOWTIMES
PROMENADE LOUNGE	DECK 3, AFT	11:45 AM - 12:00 AM
SIGNALS (18+)	DECK 9, FWD	11:45 AM - 11:00 PM

Public Health Advisory: Consuming raw or undercooked meats, poultry, seafood, shellfish, or eggs may increase your risk for foodborne illness, especially if you have certain medical conditions.



Explore and more with our carefully selected Port Adventures. Pass by the Port Adventures Desk, Deck 3, Midship to find out more.

**IMPORTANT NUMBERS**

Fire/Security: 7-3001  
Medical EMERGENCY: 7-3000  
Health Center: 7-1927