

# VOYAGE NAVIGATOR

MONDAY  
APRIL 8, 2019

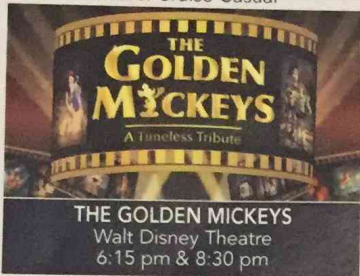
TO

FRIDAY  
APRIL 12, 2019

## CRUISE HIGHLIGHTS

### MONDAY

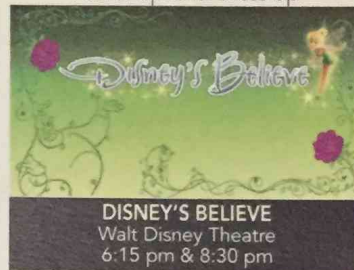
PORT CANAVERAL, FLORIDA  
Port Departure: 5:00 pm  
All Aboard: 3:45 pm  
Attire: Cruise Casual



**THE GOLDEN MICKEYS**  
Walt Disney Theatre  
6:15 pm & 8:30 pm

### TUESDAY

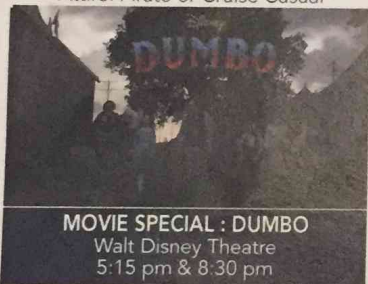
NASSAU, BAHAMAS  
All Ashore: 9:30 am  
All Aboard: 5:15 pm  
Attire: Optional Dress Up



**DISNEY'S BELIEVE**  
Walt Disney Theatre  
6:15 pm & 8:30 pm

### WEDNESDAY

DISNEY CASTAWAY CAY  
All Ashore: 8:30 am  
All Aboard: 4:45 pm  
Attire: Pirate or Cruise Casual



**MOVIE SPECIAL : DUMBO**  
Walt Disney Theatre  
5:15 pm & 8:30 pm

### THURSDAY

DAY AT SEA  
Attire: Cruise Casual



**BEAUTY AND THE BEAST**  
Walt Disney Theatre  
6:00 pm & 8:30 pm

Subject to change

## WELCOME ABOARD!

### YOUR STATEROOM & LUGGAGE

Staterooms will be ready at 1:30 pm. To allow your Stateroom Host/ess time to prepare your room, please do not remove the blue stanchion straps. Stateroom hosts will deliver luggage throughout the day until 6:00 pm.

### STATEROOMS WITH BUNK BEDS

Bunk beds are recessed into the ceiling and will be prepared during evening turndown service by your Stateroom Host/ess.

### STATEROOM SAFE

Each stateroom is equipped with a secured storage safe. Instructions for use are located on the safe.

### TO CHANGE DINING ASSIGNMENT

Requests for different seating times will be taken today:

12:30 pm - 3:00 pm; Book in Enchanted Garden, Deck 2 Mid

3:00 pm - 5:00 pm; please dial 7-1831, 7-1832, or 7-1833

### REMY & PALO DINING RESERVATIONS

Reservations are required and will be taken on a first come basis today:

12:30 pm - 3:00 pm; Enchanted Garden, Deck 2 Mid

Please dial 7-9734 for Remy or 7-9735 for Palo for more information. Cover charge applicable.

**Adult Exclusive Dining Opportunity!** Guests are invited to make 2 dinner reservations at our two adult-exclusive restaurants, Palo & Remy. This includes one reservation on embarkation evening and one more on another night of the cruise. Reservations are subject to availability and a specialty dining charge will apply.

### DINNER

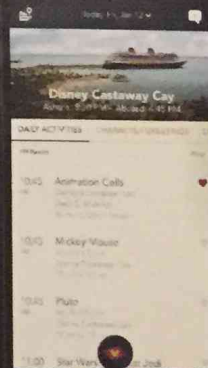
5:45 pm - First seating      8:15 pm - Second seating

Please check your Key To The World Card for details of your dining rotation, and bring them to your specific dining location. There is no need to wait in line prior to dinner. Dining Rooms open at designated seating times and your table is reserved each night of your cruise.

A = Animator's Palate, Deck 3, Aft    E = Enchanted Garden, Deck 2, Midship    R = Royal Palace, Deck 3, Midship

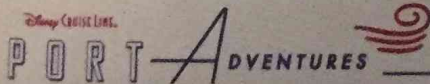
DOWNLOAD THE NEW  
**DISNEY CRUISE LINE  
NAVIGATOR APP**  
BEFORE YOU SAIL AWAY

Available  
on iOS  
and  
Android



Create the most memorable experiences during your Disney Cruise Line vacation with Port Adventures! Our Port Adventures are designed for you to see the best our ports have to offer. Stop by the Port Adventures Desk, Deck 5, Midship where our friendly team will be happy to assist you plan your adventure!

There is an adventure for everyone on your Disney Dream® vacation.



IMPORTANT NUMBERS

Fire/Security: 7-3001

Medical Emergency: 7-3000

Health Center: 7-1927

## ADULT ACTIVITY HIGHLIGHTS



**1820 SOCIETY (GUESTS 18-20 YEARS ONLY)**  
1820 Society is an exclusive option for young adult guests. Come meet fellow passengers and learn about the excellent activities that the Dream offers to create the perfect cruise experience.



**80'S MUSIC CHALLENGE**  
"Moon Walk" back to the 80's as we put your musical knowledge of the decade to the test.

### CRUISIN' SOLO GATHERING

Single, single parent or just traveling alone? Join your Cruise Staff for an informal gathering.



**DISNEY AT SEA WITH D23**  
Join us for an exciting look at what's new and what's next from all of Disney's wonderful worlds!



**KRAZY KARAOKE**  
Take to the stage, grab a microphone and sing your favorite tunes with your Club Host and DJ.



**MAKING OF THE DREAM**  
Explore the origins of Disney Cruise Line and the latest and greatest innovations conjured especially for the Disney Dream in this fascinating and entertaining behind-the-scenes program.



**MATCH YOUR MATE**  
It's time to play everyone's favorite couples game show, Match Your Mate!



*Senses Spa & Salon has a variety of seminars and fitness classes available throughout the cruise. Pamper yourself with therapeutic spa treatments of heat, steam, rain and water in luxurious and tranquil private rooms. Deck 11, Forward.*

### BEVERAGE SEMINARS

Your Beverage team has a host of tastings and seminars to entertain and educate you. Stop by Guest Services Deck 3, Midship to pre-book these experiences. (nominal fee applies).

Whiskey Tasting - Stem to Stern Wine Tasting - Martini Tasting  
Cognac Tasting - Tequila & Margarita Tasting - Mixology



## FUN FOR ALL AGES HIGHLIGHTS



**ANYONE CAN COOK**  
Every Chef has a specialty, and ours is no exception. Get a taste of perfection with each day's recipe.



**A PIRATES LIFE FOR ME**  
Calling all Pirates, we be! If you have an adventurous spirit or pirate savvy, come spin the "Wheel of Destiny" for a treasure trove of fun be ripe for the takin' in this action packed pirate game show.



**BUCCANEER BLAST FIREWORKS**  
What's a pirate party without some fireworks to remind the other ships who be ruling the oceans blue? (Weather Permitting)



**CASTAWAY CAY 5K (10+)**  
Sign up today for the Castaway Cay 5K! Please visit the Port Adventures Desk or the Guest Services Desk to register at anytime prior to our arrival at Disney Castaway Cay. Please note that runners must be 10 years of age or older to participate.



**DISNEY CHANNEL ON DECK**  
It's time for a Disney Channel afternoon poolside! Your Cruise Staff will host an exciting day of games and contests in between your favorite Disney Channel shows! So sit back, relax, and enjoy the sun!



**DISNEY JUNIOR PIRATE & PRINCESS DANCE PARTY**  
Calling all Pirates and Princesses! Come join us for a family dance party featuring music and fun activities. Whether you favor tiaras or treasure chests, there's something for you at our Disney Junior Pirate & Princess Dance Party!



**DISNEY VACATION CLUB GROUP PREVIEW**  
Join us for our interactive group presentation to learn about taking magical vacations year after year! For more information, please see a Disney Vacation Club Cast Member on Deck 4, Midship, or call 7-2805 from your stateroom phone.



**ESPN SPORTS CAMP**  
Calling all athletes! Gather your team and participate in a one of a kind sports camp at sea that only Disney and ESPN could offer. Learn new games, compete as teams & individuals - and have some fun!



**FAMILY FUSION**  
Bring the entire family and test your Disney knowledge in the high-tech interactive game show, Family Fusion.



**JACK-JACK'S INCREDIBLE DIAPER DASH**  
Calling all baby cruisers! It's time to take to the mat to see who's the fastest crawler of the seven seas! Register your baby 15 minutes prior to the big race.



**JACKPOT BINGO**  
CASH prizes and raffle prizes to be won in our family friendly Bingo sessions with your Cruise Staff. Those under the age of 18 must be accompanied by an adult to play.



**MICKEY'S PIRATES IN THE CARIBBEAN**  
It's a Pirate Celebration, me hearties! Come experience all the pirate fun alongside Captain Mickey Mouse and his famous pirate crew. Play, dance and acquire all the pirate skills needed to become an official member of Mickey's Pirate Crew! (Weather Permitting)



**SALUDOS AMIGOS FIESTA**  
Come see what Donald and his friends are up to this time. Bring the family out to this interactive dance party featuring fun Latin music! Your family will learn to salsa, merengue and just have a Latin good time!



**SO YOU THINK YOU KNOW YOUR FAMILY?**  
This fun-filled family game show is always full of surprises. Find out how well you know, or don't know your family!

# YOUTH ACTIVITIES INFO & HIGHLIGHTS



## Dine & Play

A convenience for families dining at 8:15 pm, our Youth Activities counselors will be available at 9:15 pm at the entrance of Royal Palace, Enchanted Garden and Animator's Palate dining rooms to bring registered children to join the fun in the Youth Activities areas.

## Pre-School Fun

Disney's Oceaneer Club is reserved for only those between 3-5 years of age. This is a time for them to become acclimated to Disney's Oceaneer Club, make new friends and join in on a lot of fun-filled programs and activities. Please note after Pre-School Fun has concluded, Disney's Oceaneer Club will be open for Secured Programming for ages 3-12.

## Youth Activities Open House

Open House is an opportunity for all to come and participate in a variety of exciting activities and free time in the Oceaneer Club, Oceaneer Lab, Edge and Vibe throughout the cruise. During these times secured programming will still be offered in the other venue for those looking to check their children into care.

## Youth Activities Venue Tour

Come and take a tour of Disney's Oceaneer Club and Disney's Oceaneer Lab. This informative tour will give you the information you need to know about our exciting spaces and activities offered for children ages 3-12. Please see your Personal Navigator or the Navigator App for times.



3 - 12 years old

## MICKEY'S PUZZLE PLAYTIME

Come and play with Mickey & friends as they share their favorite games, puzzles and dances!

## TOY STORY BOOT CAMP

Join Corporal Green in our own version of boot camp as we learn how to have fun - The Toy Story way!

## JEDI TRAINING: EXPERIENCE THE FORCE

Become one with the Force as you take your first step into a larger world.



3 - 12 years old

## SUPER SLOPPY SCIENCE

Join Professor Make-O-Mess in some of the most extreme experiments you will ever see in the world of Super Sloppy Science!

## PISTON CUP

It's Dinoco time and you're part of the pit crew! Design your own race car and see if you've got what it takes to end up in the winner's circle!

## GET THE HOOK

A villainous villain has stolen Captain Hook's prized golden hook. Become a member of the Top Deck Detective Agency and help solve the clues to retrieve Hook's hook.

## STITCH'S ADVENTURE SQUAD

Stitch, everyone's favorite alien, is making an appearance to share some of his mischievous games and activities.



11 - 14 years old

## HEROES VS. VILLAINS

Join your favorite hero or villain team on a series of activities that will take place throughout the cruise.

## THAT'S HILARIOUS

Ever wanted to show off your comedy skills? Then be a part of the cast for the crazy improv show "That's Hilarious" and put on a live show for your friends.



14 - 17 years old

## THE DOWNLOAD

Come up to Vibe and help plan all the fun activities you will be doing this cruise with your new friends!

## GOTCHA

You will try to eliminate your victim by various methods collecting points throughout the day, last person standing with the most points wins.

# BUENA VISTA THEATRE

Deck 4 & 5, Midship

## FEATURE MOVIES THIS VOYAGE

### MONDAY - PORT CANAVERAL, FLORIDA

12:00 pm	PG	Ralph Breaks the Internet
5:45 pm	PG	Ralph Breaks the Internet
8:30 pm	PG	Ralph Breaks the Internet
11:00 pm	PG-13	Captain Marvel

### TUESDAY - NASSAU, BAHAMAS

11:30 am	PG-13	Captain Marvel
2:15 pm	PG	Mary Poppins Returns
5:15 pm	PG-13	Captain Marvel
8:15 pm	PG-13	Captain Marvel
11:00 pm	PG	Mary Poppins Returns

### WEDNESDAY - DISNEY CASTAWAY CAY

8:30 am	PG-13	Captain Marvel	Open Captioning
11:00 am	PG	Ralph Breaks the Internet	3D
2:45 pm	PG-13	Captain Marvel	3D
5:15 pm	PG	Mary Poppins Returns	
8:15 pm	PG	Mary Poppins Returns	
11:00 pm	PG	Dumbo (2019)	

### THURSDAY - DAY AT SEA

8:30 am	PG	Family Movie Fun Time: Dumbo (2019)	
12:30 pm	PG	Ralph Breaks the Internet	3D
3:00 pm	PG-13	Captain Marvel	
5:30 pm	PG	Dumbo (2019)	
8:15 pm	PG	Dumbo (2019)	
10:45 pm	PG-13	Captain Marvel	3D

Subject to change.

## FEATURED VARIETY ACT THIS VOYAGE



### THE MAGIC & COMEDY OF ANTWAN TOWNER

Antwan Towner is originally from Portland, Oregon and now resides in Orlando, Florida. Inspired by the works of David Blaine and Lance Burton, he has performed at Walt Disney World and across the country. His clean comedy magic and mind reading shows lead to an evening of curiosities!

# MORE TO ENJOY ONBOARD



## NEW SPRING 2020 ITINERARIES

New Spring 2020 Itineraries announced! Experience sailings to the Caribbean, the Bahamas, Mexico, and Hawaii with your family! And for the very first time, sail from New Orleans to the Caribbean or Bahamas on Disney Wonder. Visit Disney Vacation Planning, Deck 4, Midship for more information. Disney Vacation Planning tends to get busy on the last day of sailing. Don't miss the opportunity to plan your next Disney vacation.



## DISNEY VACATION CLUB® MEMBER CELEBRATION

Join us as we welcome you onboard with a fun, interactive event where you can catch the latest updates at Disney Vacation Club! Please see a Disney Vacation Club Cast Member on Deck 4, Midship or call 7-2805 from your stateroom phone for more information.

## PORT SHOPPING INFORMATION

Join your Port Shopping Guide Gemma today at 2:45 pm in the Buena Vista Theatre to learn about the incredible shopping ashore in Nassau! Over \$1,000 in give-a-ways and prizes! Arrive early for free gifts and more! Collect your free ship charm from the Port Shopping Desk, Deck 4, Midship, today from 6:00 pm - 8:00 pm.



## Connect @ Sea

### FREE INTERNET EMBARKATION DAY SPECIAL

Sign up for a free 50 MB Internet package today and enjoy it throughout the cruise! This offer is only available from noon to midnight on the day your cruise begins. On your wireless device, simply find the "DCL-Guest" Wi-Fi Network, go to [www.dclguest.com](http://www.dclguest.com) to create an account, and get your free 50 MB of data to start sharing your memories even before you leave port! If you have any questions, ask our Connect@Sea Expert located at Deck 4, Midship. No purchase necessary. The free 50 MB package can only be used for the duration of the cruise. Only one free package per stateroom, but everyone can share it. Unused data from a package will not be reimbursed and it is non-transferable between voyages or ships.

### RELIGIOUS SERVICES

Groups who need a location to practice their faith may contact Guest Services for availability information.

## SENSES SPA & SALON



### DECK 11, FORWARD

Extension 7-1465

#### RAINFOREST

Come enjoy our serenity lounge, with heated chairs, dry sauna, aromatherapy steam rooms and rainfall, misting showers. Singles: \$99, Couples: \$144

#### IONITHERME

Would you like to lose 3-8 inches? Speed up your metabolism, reduce fluid retention and the appearance of cellulite? Firm your muscle tone? If so, this is the best treatment for you! \$155/session

#### ONBOARD ACUPUNCTURE

Naturally effective for pain, arthritis, sea sickness, stress, digestion, weight loss, and much more. \$150/session or \$360/3 sessions.

#### THE PERFECT DAY

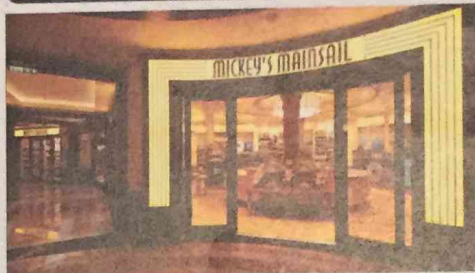
The Perfect Day: 50 minute full body massage, Foot & Ankle Massage, Scalp Massage & Hydrating Facial. 75 minute treatment - \$149.

#### REJUVENATION SPA CONSULTATIONS

Ready to enhance your natural beauty? Book your free Facial Rejuvenation consultation with our Rejuvenation Doctor at the Senses Spa.

**AN 18% AUTO GRATUITY IS ADDED TO ALL SENSES SPA SERVICES.**

## MERCHANDISE SHOPPING



### DECK 3, FORWARD

#### BIBBIDI BOBBIDI BOUTIQUE

A makeover fit for a princess! Fairy Godmothers-in-Training are ready with magic and pixie dust to give your Prince and Princess the transformation of a lifetime. Make your reservations by visiting Bibbidi Bobbidi Boutique, Deck 5, Midship or dialing extension 7-9438. Limited space available.

#### STYLISH WATCHES ONBOARD

Whether you need a tool for timekeeping or a fun fashion accessory, visit White Caps and browse a wide selection of stylish watches available. Popular brands include Breitling and Hublot. Deck 3, Forward

#### THE DISNEY PARKS COLLECTION BY

#### PANDORA JEWELRY

The Disney Parks Collection by PANDORA Jewelry features hand-finished .925 sterling silver and 14K gold charms inspired by some of Disney's most beloved characters. Visit White Caps on Deck 3, Forward, where you'll find a specially designed sterling silver charm featuring a Disney Cruise Line ship.

## SHUTTERS PHOTO GALLERY



### DECK 4, MIDSHIP

#### OUR CRUISE PHOTOS

View your embarkation photos starting at 7:00pm at Shutters, Deck 4, Midship and enter our raffle for a chance to win a 10 Digital Images Photo USB worth \$149.95. Raffle entries are accepted until 10:30 pm tonight.

\*Terms and conditions apply.

Visit Shutters on Deck 4, Midship for all your photographic needs, from digital cameras, batteries, binoculars and accessories.

Ask a friendly photographer about Our Cruise Photos and the incredible value of an unlimited digital photo package, which includes all of your stateroom's photos.

#### PROFESSIONAL PORTRAITS

Professional portraits will be available during your cruise in the Lobby Atrium, Deck 3, Midship. Please refer to your daily personal Navigator for available hours.

#### PHOTO BOOK

Visit Shutters today and turn your magical vacation memories into an impressive keepsake, a personal one-of-a-kind Photo Book. Fill every page with memories of your cruise vacation.

**PHOTOS ARE AVAILABLE FOR VIEWING ON OUR INTERACTIVE PHOTO KIOSKS APPROXIMATELY FIVE HOURS AFTER BEING TAKEN AND ARE ONLY AVAILABLE FOR PURCHASE DURING THIS CRUISE.**

## IMPORTANT INFORMATION

**Security Notice/ Unaccompanied Minor Ashore**  
All Guests (including children) who wish to disembark or embark the ship are required to present their Key to the World card at the gangway. A photo ID is also required for those Guests who are 18 years of age or older. Guests under the age of 18 are required to have a Parent, Guardian or other responsible adult complete the "Traveling with Minors" section of "My Online Check-In" prior to sailing or sign an authorization form at the Guest Services Desk if they wish to go ashore unaccompanied or with any adult from another stateroom.

**Inclement Weather**  
For the safety of all Guests, outdoor events may be changed due to unforeseen weather conditions.

**Insect Repellent Advisory**  
The Centers for Disease Control and Prevention recommends wearing long-sleeved shirts and pants along with insect repellent to protect against mosquito bites and related illnesses when going ashore. Complimentary insect repellent is available on the pier as you exit the ship. Insect repellent is also available for purchase in White Caps. When using both sunscreen and insect repellent, use sunscreen first and apply insect repellent on top of sunscreen.

**Corridor Quiet Hours**  
As a courtesy to all our Guests, please recognize quiet hallway hours from 10:00 pm til 8:00 am.

**No Reserved Seats Policy**  
As a courtesy to all our Guests, we kindly advise that the saving of seats is not permitted in the Walt Disney Theatre, and the saving of the sun loungers is not permitted on Deck 11, 12, and 13. Items left unattended will be returned to lost and found at Guest Services, Deck 3 Midship.

**Cold and Flu Reminder**  
Please wash hands frequently and thoroughly, particularly before meals. Contact the Health Center by dialing 7-1927, should anyone in your party become ill.

**Smoking**  
For the comfort of our Guests, the following areas are designated as smoking areas:  
\*Deck 13, forward, port side by Currents  
\*Deck 12, aft, port side outdoor area that is accessible through the Meridian Lounge  
\*Deck 4, aft, port side from 6:00 pm to 6:00 am only (all of Deck 4 is non-smoking from 6:00 am to 6:00 pm)  
Smoking is prohibited inside all Guest staterooms and on stateroom verandahs. Guests found smoking in their staterooms or on their verandahs will be charged a \$250 stateroom recovery fee. Electronic cigarettes may only be used in designated smoking areas.

**Walt Disney Theatre**  
Theatrical performances may use artificial fog, strobe lights, pyrotechnics and other special effects. For the safety of our performers and the comfort of those around you, the use of any photography, video recording device or any electronic equipment is prohibited.

**Verandah Safety**  
Please do not leave any personal items on your verandah that may be blown overboard or present a fire hazard if left unattended. Do not throw anything over the ship's side. Guests should not sit, lean or climb on the railing or leave children unattended on the verandah. Do not open the verandah and stateroom doors simultaneously as this may create a wind effect and could cause the doors to slam unexpectedly.

# WELCOME ABOARD!



## SAILING AWAY

It's time to go Sailing Away! Join Mickey and Minnie and the rest of the gang as they welcome you aboard the Disney Dream.

**Deck Stage, Deck 11, Midship, 4:30 pm**

## Key to the World Card Information



In case of an emergency, your lettered Assembly Station is indicated here.

- ♥ Dinner seatings are 5:45 pm or 8:15 pm.
- ♥ Your table number for the cruise is located after your dinner seating.
- ♥ Dinner locations and rotation are indicated by letters under your dinner time.
  - A - Animator's Palate, Deck 3, Aft
  - E - Enchanted Garden, Deck 2, Midship
  - R - Royal Palace, Deck 3, Midship

Afternoon	1:45	2:00	2:15	2:30	2:45	3:00	3:15	3:30	3:45	4:00	4:15	4:30	4:45	5:00	5:15	5:30	5:45	6:00	6:15	6:30	6:45	
FUNNEL VISION	Ratatouille (G)  Funnel Vision		Open Captioning								Sailing Away Deck 11 Stage				Cars (G)  Funnel Vision						Ralph Breaks the Internet (PG) Duration: 1 Hour 54 Minutes	
BUENA VISTA THEATRE					Port Shopping Talk																	
CHARACTERS													Sailing Away Deck 11 Stage		Mickey Mouse Balcony		Goofy Lobby Atrium (H)					
FUN FOR ALL AGES	Walking Ship Tour Preludes				Disney Vacation Club Member Celebration D Lounge								Kids Me! Bath Peditary Senses Fitness Center		Rock 'n' Roll with FireLites Lobby Atrium		Red Carpet Arrivals Preludes		The Golden Mickeys Walt Disney Theatre			
ADULTS	Spa Open House Senses Fitness Center				Walking Ship Tour Preludes		Magic PlayFloor Disney's Dreamer Lab						Footprint Analysis Senses Spa & Salon				Smooth Sounds with Ievgeniia Pink Wine and Champagne Bar					
VIBE 14-17 YEARS OLD	Youth Activities Open House & Registration												Youth Activities Open House				Open for Teens		Video Game Challenge			
EDGE 11-14 YEARS OLD	Youth Activities Open House & Registration												Youth Activities Open House				Open for Tweens		4 Square Competition			
OCEANEER LAB 3-12 YEARS OLD	Wacky Relays		Youth Activities Open House		Magic PlayFloor								Bingo		GAGA Ball		Meet Your Counselors		Ice Breakers			
OCEANEER CLUB 3-12 YEARS OLD	Magic PlayFloor		Dance Party		Youth Activities Open House								Youth Activities Open House				Memory Wall		Star Wars			

**Mandatory Guest Assembly Drill 4:00 pm**

All ship services will be suspended during this time.

Please refer to the posted drill instructions on the back of your stateroom door prior to heading to your Assembly Station.

You will not need your life jacket for the Guest Assembly Drill.

Your Assembly Station is indicated on your Key To The World card.



Evening	7:00	7:15	7:30	7:45	8:00	8:15	8:30	8:45	9:00	9:15	9:30	9:45	10:00	10:15	10:30	10:45	11:00	11:15	11:30	11:45	12:00	
FUNNEL VISION	NCAA Basket Ball Championships (Subject to Satellite Availability)																					
BUENA VISTA THEATRE	Ralph Breaks the Internet (PG) Duration: 1 Hour 54 Minutes												Captain Marvel (PG-13) Duration: 2 Hours 8 Minutes									
CHARACTERS	Mickey Mouse Balcony		Princess Tiana Lobby Atrium (V)		Pluto Lobby Atrium (H)				Rapunzel Lobby Atrium (V)		Mickey Mouse Balcony		Daisy Lobby Atrium (H)		Donald Lobby Atrium (H)							
FUN FOR ALL AGES	Bingo Pre-Sales Evolution		Big X \$500 Jackpot Bingo Evolution				Red Carpet Arrivals Preludes		The Golden Mickeys Walt Disney Theatre		The Golden Mickeys After Party D Lounge		So You Think You Know Your Family? D Lounge		Family Superstar Karaoke D Lounge							
ADULTS			Mirror Mirror D Lounge		70's Music Trivia Pub 687		NCAA Basketball (Subject to Satellite Availability) Pub 687		Snippets Evolution		Pop Acoustic with FireLites Lobby Atrium		Smooth Sounds with FireLites Lobby Atrium		Match Your Mate Evolution		Cruise Staff DJ Evolution		Cruise Staff DJ District Lounge			
VIBE 14-17 YEARS OLD	Cards Tournament		Game Challenge		GAGA Ball		Foosball Tournament		The Download				Heroes and Villains									
EDGE 11-14 YEARS OLD	Trivia Challenge		GAGA Ball		Game Challenge		Profiles		Taking it to The Edge		Ice Breakers		Heroes and Villains									
OCEANEER LAB 3-12 YEARS OLD	Game Challenge		Get the Hook		Disney Animation: Creating a Character		Pluto's Pajama Party		Magic PlayFloor		Four Square											
OCEANEER CLUB 3-12 YEARS OLD	Game Challenge		Magic PlayFloor		Aloha Luau		Glow Jam		Toy Story Boot Camp		Go Fetch		Star Wars Galaxy Designers									

Bahama Muna (Alcoholic)  
Passion Cream Freeze (Non-Alcoholic)

**DRINK OF THE DAY**

YOUTH ACTIVITIES OPEN HOUSE  
A non-secured program with activities for families, adults and children to enjoy together.





# THE GOLDEN MICKEYS

A Timeless Tribute

**WALT DISNEY THEATRE**  
DECK 3 & 4, FORWARD  
**6:15 pm & 8:30 pm**

As a courtesy to all Guests, we kindly advise that the saving of seats is not permitted in the Walt Disney Theatre.

Assistance available at the entrance to the Walt Disney Theatre 30 minutes prior to show time

### Character Meet and Greet Experience Reservation

Port Adventures Desk, Deck 5, Midship - 11:45 am - 2:00 pm  
The following appearances require a reservation. Space is limited.

For Guests who did not book online, a limited number of reservations are available for:

- \* Princess Gathering
- \* Frozen Meet and Greet

### Character Appearances

**PRINCESS TIANA**  
Balcony - 11:30 am  
Lobby Atrium (V) - 7:15 pm

**PETER PAN**  
Balcony - 12:15 pm

**SAILING AWAY**  
Deck 11 Stage - 4:30 pm

**MICKEY MOUSE**  
Balcony  
5:15 pm, 7:30 pm & 9:45 pm

**MINNIE MOUSE**  
Lobby Atrium (H) - 5:30 pm

**GOOFY**  
Lobby Atrium (V) - 5:45 pm

**PLUTO**  
Lobby Atrium (H) - 7:45 pm

**DAISY DUCK**  
Lobby Atrium (H) - 9:30 pm

**RAPUNZEL**  
Lobby Atrium (V) - 9:30 pm

**DONALD DUCK**  
Lobby Atrium (H) - 10:00 pm



(H) Hallway - (S) Starboard Side - (P) Port Side - (V) Vestibule

For details of daily Disney character appearances, refer to the character line on your Navigator Grid, or the digital character board in the Lobby Atrium. Lines close 15 minutes after advertised start time.

## SHIP DIRECTORY

YOUTH ACTIVITIES			
DISNEY'S OCEANEER CLUB	DECK 5, MID	12:00 PM - 3:30 PM	4:30 PM - 12:00 AM
DISNEY'S OCEANEER LAB	DECK 5, MID	12:00 PM - 3:30 PM	4:30 PM - 12:00 AM
EDGE	DECK 13, MID	12:00 PM - 3:30 PM	4:30 PM - 1:00 AM
IT'S A SMALL WORLD NURSERY	DECK 5, MID	12:00 PM - 3:30 PM	4:30 PM - 12:00 AM
VIBE	DECK 4, FWD	12:00 PM - 3:30 PM	4:30 PM - 1:00 AM

POOLS & MORE			
<small>* Children under 12 must have adult supervision in pool areas.</small>			
AQUADUCK	DECK 12, AFT	12:00 PM - 3:00 PM	4:30 PM - 10:00 PM
DONALD'S POOL	DECK 11, MID	12:00 PM - 3:15 PM	6:00 PM - 10:00 PM
FUNNEL PUDDLE	DECK 12, FWD	12:00 PM - 6:00 PM	
MICKEY'S POOL	DECK 11, MID	12:00 PM - 3:15 PM	4:30 PM - 10:00 PM
MICKEY'S SLIDE	DECK 11, MID	12:00 PM - 3:00 PM	4:30 PM - 6:00 PM
NEMO'S REEF	DECK 11, MID	12:00 PM - 3:15 PM	4:30 PM - 6:00 PM
QUIET COVE POOL (18+)	DECK 11, FWD	12:00 PM - 11:00 PM	
SATELLITE FALLS (18+)	DECK 13, FWD	12:00 PM - 9:00 PM	

Please note, "selfie sticks" are not permitted in any aquatic area.  
Complimentary pool vests are available for children to use in the pools onboard.  
Located on the pool deck.

RECREATION			
GOLF/SPORTS SIMULATOR	DECK 13, AFT	12:00 PM - 3:15 PM	4:30 PM - 6:00 PM
GOOFY GOLF	DECK 13, AFT	5:30 PM - 10:00 PM	
GOOFY'S SPORTS DECK	DECK 13, AFT	12:00 PM - 6:00 PM	
MIDSHIP DETECTIVE AGENCY	DECK 2 & 5, MID	11:00 AM - 11:00 PM	
PORT ADVENTURES DESK	DECK 5, MID	12:00 PM - 3:30 PM	4:30 PM - 10:00 PM
SENSES FITNESS CENTER (18+)	DECK 11, FWD	12:00 PM - 10:00 PM	

GENERAL INFORMATION			
BUENA VISTA THEATRE	DECK 4 & 5, MID	SHOWTIMES	
CONNECT@SEA DESK	DECK 4, MID	1:00 PM - 3:30 PM	7:00 PM - 10:00 PM
DISNEY VACATION CLUB	DECK 4, MID	5:00 PM - 10:00 PM	
DISNEY VACATION PLANNING	DECK 4, MID	5:00 PM - 10:00 PM	
GUEST SERVICES	DECK 3, MID	24 HOURS	
HAIRBRAIDING	DECK 11, MID	5:00 PM - 10:00 PM	
MEDICAL HEALTH CENTER	DECK 1, FWD	4:30 PM - 7:00 PM	
PORT SHOPPING DESK	DECK 5, MID	6:30 PM - 8:30 PM	
PRELUDES	DECK 3, FWD	5:45 PM - 9:00 PM	
SENSES SPA AND SALON	DECK 11, FWD	12:00 PM - 10:00 PM	
SHUTTERS PHOTO GALLERY	DECK 4, MID	7:00 PM - 10:30 PM	
WALT DISNEY THEATRE	DECK 3 & 4, FWD	SHOWTIMES	

SHOPPING			
BIBBIDI BOBBIDI BOUTIQUE	DECK 5, MID	12:00 PM - 3:00 PM	5:00 PM - 9:00 PM
MICKEY'S MAINSAIL	DECK 3, FWD	5:45 PM - 11:00 PM	
SEA TREASURES	DECK 3, FWD	5:45 PM - 11:00 PM	
VISTA GALLERY	DECK 2, MID		
WHITE CAPS	DECK 3, FWD	5:45 PM - 11:00 PM	
WHOZITS & WHATZITS	DECK 11, MID	12:00 PM - 3:15 PM	4:30 PM - 6:00 PM
		9:00 PM - 11:00 PM	

DUE TO PORT REGULATIONS, WHEN THE SHIP IS DOCKED, THE STORES MUST REMAIN CLOSED.

## EVENING ATTIRE | Cruise Casual

### DINING & LOUNGES

LUNCH			
CABANAS	DECK 11, AFT	11:45 AM - 3:00 PM	
ANIMATOR'S PALATE	DECK 3, AFT	11:45 AM - 2:00 PM	
FILLMORE'S FAVORITES	DECK 11, MID	12:00 PM - 3:30 PM	4:30 PM - 6:00 PM
LUIGI'S PIZZA	DECK 11, MID	12:00 PM - 3:30 PM	4:30 PM - 6:00 PM
TOW MATER'S GRILL	DECK 11, MID	12:00 PM - 3:30 PM	4:30 PM - 6:00 PM

DINNER			
ANIMATOR'S PALATE	DECK 3, AFT	5:45 PM & 8:15 PM	
ENCHANTED GARDEN	DECK 2, MID	5:45 PM & 8:15 PM	
PALO (18+) <small>(RESERVATIONS REQ. &amp; NON-FEE APPLIES)</small>	DECK 12, AFT	6:00 PM - 8:30 PM	
REMY (18+) <small>(RESERVATIONS REQ. &amp; NON-FEE APPLIES)</small>	DECK 12, AFT	6:00 PM - 8:30 PM	
ROYAL PALACE	DECK 3, MID	5:45 PM & 8:15 PM	
TOW MATER'S GRILL	DECK 11, MID	6:00 PM - 11:00 PM	

LATE NIGHT SNACKS			
LUIGI'S PIZZA	DECK 11, MID	9:30 PM - 12:00 AM	
THE DISTRICT	DECK 4, AFT	10:45 PM - 11:45 PM	

ADDED FEATURES			
BEVERAGE STATION	DECK 11, MID	24 HOURS	
EYE SCREAM	DECK 11, MID	11:45 AM - 3:30 PM	4:30 PM - 11:30 PM
ROOM SERVICE	DIAL 0	24 HOURS	
VANELLOPE'S SWEETS AND TREATS	DECK 11, AFT	11:30 AM - 3:30 PM	4:30 PM - 10:30 PM

### ENTERTAINMENT - LOUNGES - BARS

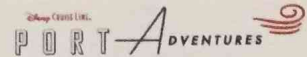
Adults must be 21 and older to consume alcoholic beverages.

BON VOYAGE	DECK 3, MID	11:30 AM - 11:00 PM
COVE BAR (18+)	DECK 11, FWD	11:30 AM - 10:30 PM
COVE CAFE (18+)	DECK 11, FWD	11:30 AM - 12:00 AM
CURRENTS (18+)	DECK 13, FWD	11:30 AM - 11:00 PM
D LOUNGE	DECK 4, MID	SHOWTIMES
DISTRICT LOUNGE (18+ AFTER 9:00 PM)	DECK 4, AFT	11:30 AM - 2:00 AM
EVOLUTION (18+ AFTER 9:00 PM)	DECK 4, AFT	9:30 PM - 12:00 AM
FROZONE TREATS	DECK 11, MID	11:30 AM - 6:00 PM
MERIDIAN (18+)	DECK 12, AFT	5:00 PM - 12:00 AM
OUTLOOK (18+)	DECK 14, MID	
PINK: WINE AND CHAMPAGNE BAR (18+)	DECK 4, AFT	5:00 PM - 12:00 AM
PUB 687 (18+ AFTER 9:00 PM)	DECK 4, AFT	1:30 PM - 12:00 AM
SENSES JUICE BAR	DECK 11, FWD	11:30 AM - 6:00 PM
SKYLINE (18+)	DECK 4, AFT	5:00 PM - 12:00 AM
VISTA CAFE	DECK 4, MID	7:00 AM - 10:30 PM
WAVES	DECK 12, AFT	11:30 AM - 6:00 PM

Public Health Advisory: Consuming raw or under-cooked meats, poultry, seafood, shellfish, or eggs may increase your risk for food borne illness, especially if you have certain medical condition.



**MIDSHIP DETECTIVE AGENCY**  
Use your detective know-how and our special detective "badge" to search the ship and catch your criminal! Deck 2 & 5, Midship Kiosks.



Visit the Port Adventures Desk, Deck 5, Midship, for bookings & questions.

### IMPORTANT NUMBERS

Fire/Security:	7-3001
Medical Emergency:	7-3000
Health Center:	7-1927