

VOYAGE NAVIGATOR

FRIDAY
APRIL 5, 2019

TO

MONDAY
APRIL 8, 2019

CRUISE HIGHLIGHTS

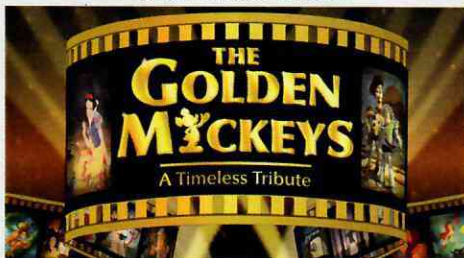
FRIDAY

PORT CANAVERAL, FLORIDA

Port Departure: 5:00 pm

All Aboard: 3:45 pm

Attire: Cruise Casual



THE GOLDEN MICKEYS

Walt Disney Theatre
6:15 pm & 8:30 pm

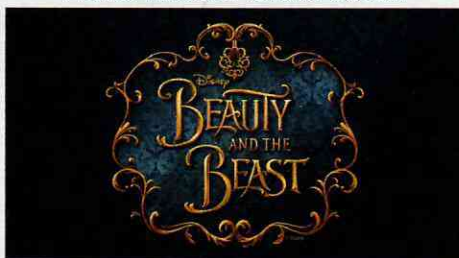
SATURDAY

NASSAU, BAHAMAS

All Ashore: 9:30 am

All Aboard: 5:15 pm

Attire: Pirate or Cruise Casual



BEAUTY AND THE BEAST

Walt Disney Theatre
6:00 pm & 8:30 pm

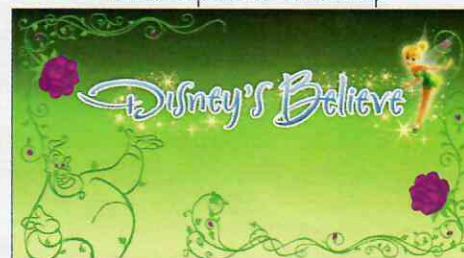
SUNDAY

DISNEY CASTAWAY CAY

All Ashore: 8:30 am

All Aboard: 4:45 pm

Attire: Optional Dress Up



DISNEY'S BELIEVE

Walt Disney Theatre
6:15 pm & 8:30 pm



Subject to change.

WELCOME ABOARD!

YOUR STATEROOM & LUGGAGE

Staterooms will be ready at 1:30 pm. To allow your Stateroom Host/ess time to prepare your room, please do not remove the blue stanchion straps. Stateroom hosts will deliver luggage throughout the day until 6:00 pm.

STATEROOMS WITH BUNK BEDS

Bunk beds are recessed into the ceiling and will be prepared during evening turndown service by your Stateroom Host/ess.

STATEROOM SAFE

Each stateroom is equipped with a secured storage safe. Instructions for use are located on the safe.

TO CHANGE DINING ASSIGNMENT

Requests for different seating times will be taken today:

12:30 pm - 3:00 pm; Book in Enchanted Garden, Deck 2 Mid

3:00 pm - 5:00 pm; please dial 7-1831, 7-1832, or 7-1833

REMY & PALO DINING RESERVATIONS

Reservations are required and will be taken on a first come basis today:

12:30 pm - 3:00 pm; Enchanted Garden, Deck 2 Mid

Please dial 7-9734 for Remy or 7-9735 for Palo for more information. Cover charge applicable.

Adult Exclusive Dining Opportunity! Guests are invited to make 2 dinner reservations at our two adult-exclusive restaurants, Palo & Remy. This includes one reservation on embarkation evening and one more on another night of the cruise. Reservations are subject to availability and a specialty dining charge will apply.

DINNER

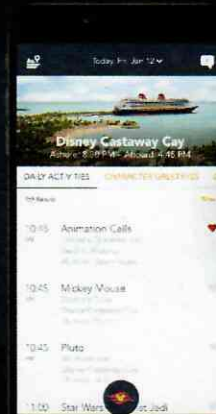
5:45 pm - First seating 8:15 pm - Second seating

Please check your Key To The World Card for details of your dining rotation, and bring them to your specific dining location. There is no need to wait in line prior to dinner. Dining Rooms open at designated seating times and your table is reserved each night of your cruise.

A = Animator's Palate, Deck 3, Aft E = Enchanted Garden, Deck 2, Midship R = Royal Palace, Deck 3, Midship

DOWNLOAD THE NEW
**DISNEY CRUISE LINE
NAVIGATOR APP**
BEFORE YOU SAIL AWAY

Available
on iOS
and
Android



Create the most memorable experiences during your Disney Cruise Line vacation with Port Adventures! Our Port Adventures are designed for you to see the best of our ports have to offer. Stop by the Port Adventures Desk, Deck 5, Midship where our friendly team will be happy to assist you plan your adventure!

There is an adventure for everyone on your Disney Dream® vacation.

IMPORTANT NUMBERS

Fire/Security: 7-3001

Medical Emergency: 7-3000

Health Center: 7-1927

ADULT ACTIVITY HIGHLIGHTS



1820 SOCIETY (GUESTS 18-20 YEARS ONLY)

1820 Society is an exclusive option for young adult guests. Come meet fellow passengers and learn about the excellent activities that the Dream offers to create the perfect cruise experience.



80'S MUSIC CHALLENGE

"Moon Walk" back to the 80's as we put your musical knowledge of the decade to the test.

CRUISIN' SOLO GATHERING

Single, single parent or just traveling alone? Join your Cruise Staff for an informal gathering.



KRAZY KARAOKE

Take to the stage, grab a microphone and sing your favorite tunes with your Club Host and DJ.



MAKING OF THE DREAM

Explore the origins of Disney Cruise Line and the latest and greatest innovations conjured especially for the Disney Dream in this fascinating and entertaining behind-the-scenes program.



MATCH YOUR MATE

It's time to play everyone's favorite couples game show, Match Your Mate!



Senses Spa & Salon has a variety of seminars and fitness classes available throughout the cruise. Pamper yourself with therapeutic spa treatments of heat, steam, rain and water in luxurious and tranquil private rooms. Deck 11, Forward.

BEVERAGE SEMINARS

Your Beverage team has a host of tastings and seminars to entertain and educate you. Stop by Guest Services Deck 3, Midship to pre-book these experiences. (nominal fee applies).

Whiskey Tasting - Stem to Stern Wine Tasting - Martini Tasting
Cognac Tasting - Tequila & Margarita Tasting - Mixology



FUN FOR ALL AGES HIGHLIGHTS



A PIRATES LIFE FOR ME

Calling all Pirates, we be! If ye have an adventurous spirit or pirate savvy, come spin the "Wheel of Destiny" for a treasure trove of fun be ripe for the takin' in this action packed pirate game show.



BUCCANEER BLAST FIREWORKS

What's a pirate party without some fireworks to remind the other ships who be ruling the oceans blue? (Weather Permitting)



CASTAWAY CAY 5K (10+)

Sign up today for the Castaway Cay 5K! Please visit the Port Adventures Desk or the Guest Services Desk to register at anytime prior to our arrival at Disney Castaway Cay. Please note that runners must be 10 years of age or older to participate.



DISNEY JUNIOR PIRATE & PRINCESS DANCE PARTY

Calling all Pirates and Princesses! Come join us for a family dance party featuring music and fun activities. Whether you favor tiaras or treasure chests, there's something for you at our Disney Junior Pirate & Princess Dance Party!



DISNEY VACATION CLUB GROUP PREVIEW

Join us for our interactive group presentation to learn about taking magical vacations year after year! For more information, please see a Disney Vacation Club Cast Member on Deck 4, Midship, or call 7-2805 from your stateroom phone.



FAMILY FUSION

Bring the entire family and test your Disney knowledge in the high-tech interactive game show, Family Fusion.



JACKPOT BINGO

CASH prizes and raffle prizes to be won in our family friendly Bingo sessions with your Cruise Staff. Those under the age of 18 must be accompanied by an adult to play.



MICKEY'S PIRATES IN THE CARIBBEAN

It's a Pirate Celebration, me hearties! Come experience all the pirate fun alongside Captain Mickey Mouse and his famous pirate crew. Play, dance and acquire all the pirate skills needed to become an official member of Mickey's Pirate Crew! (Weather Permitting)



MIRROR MIRROR

Join the Magic Mirror in the fairest game show of them all, Mirror, Mirror. There's trivia, singing and even a relay race. Hi Ho, Hi Ho, it's off to play we go



SO YOU THINK YOU KNOW YOUR FAMILY?

This fun-filled family game show is always full of surprises. Find out how well you know, or don't know your family!

YOUTH ACTIVITIES INFO & HIGHLIGHTS



OCEANEER LAB



Dine & Play

A convenience for families dining at 8:15 pm, our Youth Activities counselors will be available at 9:15 pm at the entrance of Royal Palace, Enchanted Garden and Animator's Palate dining rooms to bring registered children to join the fun in the Youth Activities areas.

Pre-School Fun

Disney's Oceaneer Club is reserved for only those between 3-5 years of age.

This is a time for them to become acclimated to Disney's Oceaneer Club, make new friends and join in on a lot of fun-filled programs and activities.

Please note after Pre-School Fun has concluded, Disney's Oceaneer Club will be open for Secured Programming for ages 3-12.

Youth Activities Open House

Open House is an opportunity for all to come and participate in a variety of exciting activities and free time in the Oceaneer Club, Oceaneer Lab, Edge and Vibe throughout the cruise. During these times secured programming will still be offered in the other venue for those looking to check their children into care.

Youth Activities Venue Tour

Come and take a tour of Disney's Oceaneer Club and Disney's Oceaneer Lab. This informative tour will give you the information you need to know about our exciting spaces and activities offered for children ages 3-12. Please see your Personal Navigator or the Navigator App for times.



3 - 12 years old

MICKEY'S PUZZLE PLAYTIME

Come and play with Mickey & friends as they share their favorite games, puzzles and dances!

TOY STORY BOOT CAMP

Join Corporal Green in our own version of boot camp as we learn how to have fun - The Toy Story way!

JEDI TRAINING: EXPERIENCE THE FORCE

Become one with the Force as you take your first step into a larger world.



3 - 12 years old

SUPER SLOPPY SCIENCE

Join Professor Make-O-Mess in some of the most extreme experiments you will ever see in the world of Super Sloppy Science!

PISTON CUP

It's Dinoco time and you're part of the pit crew! Design your own race car and see if you've got what it takes to end up in the winner's circle!

GET THE HOOK

A villainous villain has stolen Captain Hook's prized golden hook. Become a member of the Top Deck Detective Agency and help solve the clues to retrieve Hook's hook.

STITCH'S ADVENTURE SQUAD

Stitch, everyone's favorite alien, is making an appearance to share some of his mischievous games and activities.



11 - 14 years old

HEROES VS. VILLAINS

Join your favorite hero or villain team on a series of activities that will take place throughout the cruise.

THAT'S HILARIOUS

Ever wanted to show off your comedy skills? Then be a part of the cast for the crazy improv show "That's Hilarious" and put on a live show for your friends.



14 - 17 years old

A PIRATE'S LIFE FOR ME

Yo ho, yo ho, a Pirate's Life for Me! Aarrgh me mateys! Put your knowledge to the test!

HOMECOMING

Come and join your fellow teens in our very own version of "Homecoming" and dance the night away.

BUENA VISTA THEATRE

Deck 4 & 5, Midship

FEATURE MOVIES THIS VOYAGE

FRIDAY - PORT CANAVERAL, FLORIDA

| | | |
|---------|----|---------------------------|
| 12:00pm | PG | Ralph Breaks the Internet |
| 5:30 pm | PG | Mary Poppins Returns |
| 8:30 pm | PG | Mary Poppins Returns |

SATURDAY - NASSAU, BAHAMAS

| | | | |
|----------|-------|---------------------------|--------------------|
| 10:00 am | PG | Ralph Breaks the Internet | 3D |
| 12:15 pm | PG | Mary Poppins Returns | |
| 3:00 pm | PG-13 | Captain Marvel | cc Open Captioning |
| 5:30 pm | PG | Dumbo (2019) | 3D |
| 8:30 pm | PG | Dumbo (2019) | 3D |
| 11:00 pm | PG-13 | Captain Marvel | |

SUNDAY - DISNEY CASTAWAY CAY

| | | | |
|----------|-------|--|--------------------|
| 8:30 am | PG | Family Movie Fun Time: Ralph Breaks the Internet | |
| 11:15 am | PG | Dumbo (2019) | |
| 1:45 pm | PG-13 | Captain Marvel | cc Open Captioning |
| 5:30 pm | PG-13 | Captain Marvel | 3D |
| 8:15 pm | PG-13 | Captain Marvel | |
| 11:00pm | PG | Dumbo (2019) | |

Subject to change.

FEATURED VARIETY ACT THIS VOYAGE



THE MAGIC & COMEDY OF ANTWAN TOWNER

Antwan Towner is originally from Portland, Oregon and now resides in Orlando, Florida. Inspired by the works of David Blaine and Lance Burton, he has performed at Walt Disney World and across the country. His clean comedy magic and mind reading shows lead to an evening of curiosities!

MORE TO ENJOY ONBOARD

NEW SPRING 2020 ITINERARIES

New Spring 2020 Itineraries announced! Experience sailings to the Caribbean, the Bahamas, Mexico, and Hawaii with your family! And for the very first time, sail from New Orleans to the Caribbean or Bahamas on Disney Wonder. Visit Disney Vacation Planning, Deck 4, Midship for more information. Disney Vacation Planning tends to get busy on the last day of sailing. Don't miss the opportunity to plan your next Disney vacation.

DISNEY VACATION CLUB® MEMBER CELEBRATION

Join us as we welcome you onboard with a fun, interactive event where you can catch the latest updates at Disney Vacation Club! Please see a Disney Vacation Club Cast Member on Deck 4, Midship or call 7-2805 from your stateroom phone for more information.

PORT SHOPPING INFORMATION

Join your Port Shopping Guide Gemma today at 2:45 pm in the Buena Vista Theatre to learn about the incredible shopping ashore in Nassau! Over \$1,000 in give-a-ways and prizes! Arrive early for free gifts and more! Collect your free ship charm from the Port Shopping Desk, Deck 4, Midship, today from 6:00 pm - 8:00 pm.

Connect @ Sea

FREE INTERNET EMBARKATION DAY SPECIAL

Sign up for a free 50 MB Internet package today and enjoy it throughout the cruise! This offer is only available from noon to midnight on the day your cruise begins. On your wireless device, simply find the "DCL-Guest" Wi-Fi Network, go to www.dclguest.com to create an account, and get your free 50 MB of data to start sharing your memories even before you leave port! If you have any questions, ask our Connect@Sea Expert located at Deck 4, Midship. No purchase necessary. The free 50 MB package can only be used for the duration of the cruise. Only one free package per stateroom, but everyone can share it. Unused data from a package will not be reimbursed and it is non-transferable between voyages or ships.

RELIGIOUS SERVICES

Groups who need a location to practice their faith may contact Guest Services for availability information.

FREE ON DEMAND TV

Watch Disney movies, Hollywood features, ABC shows, and even captioned content, plus much more "On Demand" for FREE in the comfort of your stateroom! Bookmark your movie and come back to watch it later. Press MENU on your stateroom television remote control and follow the prompts.



SHOPPING
Ashore

SENSES SPA & SALON



DECK 11, FORWARD

Extension 7-1465

RAINFOREST

Come enjoy our serenity lounge, with heated chairs, dry sauna, aromatherapy steam rooms and rainfall, misting showers.

\$99 for Couples pass, \$75 for Singles pass

IONITHERME

Would you like to lose 3-8 inches? Speed up your metabolism, reduce fluid retention and the appearance of cellulite? Firm your muscle tone? If so, this is the best treatment for you! \$155/session.

ONBOARD ACUPUNCTURE

Naturally effective for pain, arthritis, sea sickness, stress, digestion, weight loss, and much more.

\$150/session or \$360/3 sessions.

THE PERFECT DAY

The Perfect Day: 50 minute full body massage, Foot & Ankle Massage, Scalp Massage & Hydrating Facial. 75 minute treatment - \$169.

REJUVENATION SPA CONSULTATIONS

Ready to enhance your natural beauty? Book your free Facial Rejuvenation consultation with our Rejuvenation Doctor at the Senses Spa.

AN 18% AUTO GRATUITY IS ADDED TO ALL SENSES SPA SERVICES.

MERCHANDISE SHOPPING



DECK 3, FORWARD

BIBBIDI BOBBIDI BOUTIQUE

A makeover fit for a princess! Fairy Godmothers-in-Training are ready with magic and pixie dust to give your Prince and Princess the transformation of a lifetime. Make your reservations by visiting Bibbidi Bobbidi Boutique, Deck 5, Midship or dialing extension 7-9438. Limited space available.

STYLISH WATCHES ONBOARD

Whether you need a tool for timekeeping or a fun fashion accessory, visit White Caps and browse a wide selection of stylish watches available. Popular brands include Breitling and Hublot. Deck 3, Forward

THE DISNEY PARKS COLLECTION BY PANDORA JEWELRY

The Disney Parks Collection by PANDORA Jewelry features hand-finished .925 sterling silver and 14K gold charms inspired by some of Disney's most beloved characters. Visit White Caps on Deck 3, Forward, where you'll find a specially designed sterling silver charm featuring a Disney Cruise Line ship.

LUXURY GOODS JEWELRY

Check out the Crown of Light Diamonds collection at White Caps. Deck 3, Forward.

SHUTTERS PHOTO GALLERY



DECK 4, MIDSHIP

OUR CRUISE PHOTOS

View your embarkation photos starting at 7:00pm at Shutter's, Deck 4, Midship and enter our raffle for a chance to win a 10 Digital Images Photo USB worth \$149.95.

Raffle entries are accepted until 10:30 pm tonight.

*Terms and conditions apply.

Visit Shutter's on Deck 4, Midship for all your photographic needs, from digital cameras, batteries, binoculars and accessories.

Ask a friendly photographer about Our Cruise Photos and the incredible value of an unlimited digital photo package, which includes all of your stateroom's photos.

PROFESSIONAL PORTRAITS

Professional portraits will be available during your cruise in the Lobby Atrium, Deck 3, Midship. Please refer to your daily personal Navigator for available hours.

PHOTOBOOK

Visit Shutter's today and turn your magical vacation memories into an impressive keepsake, a personal one-of-a-kind Photo Book. Fill every page with memories of your cruise vacation.

PHOTOS ARE AVAILABLE FOR VIEWING ON OUR INTERACTIVE PHOTO KIOSKS APPROXIMATELY FIVE HOURS AFTER BEING TAKEN AND ARE ONLY AVAILABLE FOR PURCHASE DURING THIS CRUISE.

IMPORTANT INFORMATION

Security Notice/Unaccompanied Minor Ashore

All Guests (including children) who wish to disembark or embark the ship are required to present their Key to the World card at the gangway. A photo ID is also required for those Guests who are 18 years of age or older. Guests under the age of 18 are required to have a Parent, Guardian or other responsible adult complete the "Traveling with Minors" section of "My Online Check-In" prior to sailing or sign an authorization form at the Guest Services Desk if they wish to go ashore unaccompanied or with any adult from another stateroom.

Inclement Weather

For the safety of all Guests, outdoor events may be changed due to unforeseen weather conditions.

Insect Repellent Advisory

The Centers for Disease Control and Prevention recommends wearing long-sleeved shirts and pants along with insect repellent to protect against mosquito bites and related illnesses when going ashore. Complimentary insect repellent is available on the pier as you exit the ship. Insect repellent is also available for purchase in White Caps. When using both sunscreen and insect repellent, use sunscreen first and apply insect repellent on top of sunscreen.

Corridor Quiet Hours

As a courtesy to all our Guests, please recognize quiet hallway hours from 10:00 pm til 8:00 am.

No Reserved Seats Policy

As a courtesy to all our Guests, we kindly advise that the saving of seats is not permitted in the Walt Disney Theatre, and the saving of the sun loungers is not permitted on Deck 11, 12, and 13. Items left unattended will be returned to lost and found at Guest Services, Deck 3 Midship.

Cold and Flu Reminder

Please wash hands frequently and thoroughly, particularly before meals. Contact the Health Center by dialing 7-1927, should anyone in your party become ill.

Smoking

For the comfort of our Guests, the following areas are designated as smoking areas:

*Deck 13, forward, port side by Currents
*Deck 12, aft, port side outdoor area that is accessible through the Meridian Lounge

*Deck 4, aft, port side from 6:00 pm to 6:00 am only (all of Deck 4 is non-smoking from 6:00 am to 6:00 pm)

Smoking is prohibited inside all Guest staterooms and on stateroom verandahs. Guests found smoking in their staterooms or on their verandahs will be charged a \$250 stateroom recovery fee. Electronic cigarettes may only be used in designated smoking areas.

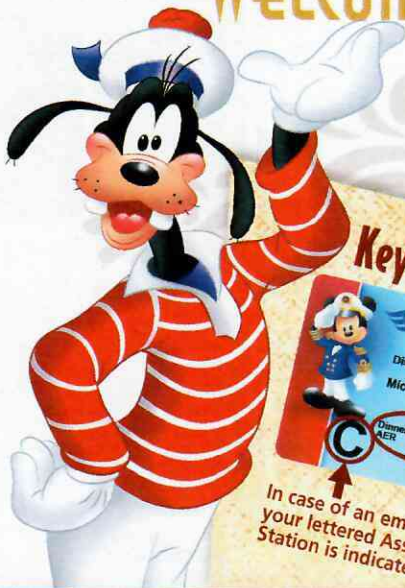
Walt Disney Theatre

Theatrical performances may use artificial fog, strobe lights, pyrotechnics and other special effects. For the safety of our performers and the comfort of those around you, the use of any photography, video recording device or any electronic equipment is prohibited.

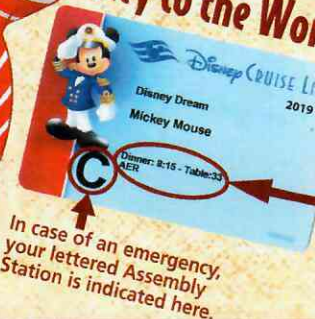
Verandah Safety

Please do not leave any personal items on your verandah that may be blown overboard or present a fire hazard if left unattended. Do not throw anything over the ship's side. Guests should not sit, lean or climb on the railing or leave children unattended on the verandah. Do not open the verandah and stateroom doors simultaneously as this may create a wind effect and could cause the doors to slam unexpectedly.

WELCOME ABOARD!



Key to the World Card Information



- ♥ Dinner seatings are 5:45 pm or 8:15 pm.
- ♥ Your table number for the cruise is located after your dinner seating.
- ♥ Dinner locations and rotation are indicated by letters under your dinner time.
A - Animator's Palate, Deck 3, Aft
E - Enchanted Garden, Deck 2, Midship
R - Royal Palace, Deck 3, Midship

SAILING AWAY

It's time to go Sailing Away! Join Mickey and Minnie and the rest of the gang as they welcome you aboard the Disney Dream.

**Deck Stage,
Deck 11, Midship,
4:30 pm**

Bahama Mama (Alcoholic)
Passion Cream Freeze (Non-Alcoholic)
**DRINK
OF THE DAY**

| Afternoon | 1:45 | 2:00 | 2:15 | 2:30 | 2:45 | 3:00 | 3:15 | 3:30 | 3:45 | 4:00 | 4:15 | 4:30 | 4:45 | 5:00 | 5:15 | 5:30 | 5:45 | 6:00 | 6:15 | 6:30 | 6:45 | | | | |
|---------------------------------|--|------|--|------|---|------|--|------|---------------------------------------|---|------------|---|--|---|-----------------------------------|--|-----------|---|------|------|------|--|--|--|--|
| FUNNEL VISION | Ratatouille (PG) Open Captioning Funnel Vision | | | | | | | | | | | Mandatory Guest Assembly Drill 4:00 pm All ship services will be suspended during this time. Please refer to the posted drill instructions on the back of your stateroom door prior to heading to your Assembly Station.  Your Assembly Station is indicated on your Key To The World card. | | Sailing Away Deck Stage 11 | | Cars (G) Open Captioning Funnel Vision | | | | | | | | | |
| BUENA VISTA THEATRE | | | | | Port Shopping Talk | | | | | | | | | Mary Poppins Returns (PG) Duration: 2 Hours 10 Minutes | | | | | | | | | | | |
| CHARACTERS | | | | | | | | | | | | | | Sailing Away Deck Stage 11 | | Mickey Mouse Balcony | | Goofy Lobby Atrium (V) | | | | | | | |
| FUN FOR ALL AGES | Walking Ship Tour Preludes | | Disney Vacation Club Member Celebration D Lounge | | | | | | | Minnie Mouse Lobby Atrium (H) | | | | | | | | | | | | | | | |
| | | | | | | | | | | Songs by the Sea with Sunshine Trio Lobby Atrium | | Hollywood Hits with Charles Reuter District Lounge | | | | Red Carpet Arrivals Preludes | | The Golden Mickeys Walt Disney Theatre | | | | | | | |
| | Magic PlayFloor | | Walking Ship Tour Preludes | | Magic PlayFloor | | Kids Me! Bath Padi Party Senses Spa & Salon | | Jewish Sabbath Outlook (Guest Led) | | Open House | | | | | | | | | | | | | | |
| ADULTS | Spa Open House Senses Spa & Salon | | | | | | | | Cruisin' Solo Gathering Cove Cafe | | | | | | | | | | | | | | | | |
| | | | | | Port Shopping Talk Buena Vista Theatre | | | | | | | | Footprint Analysis Senses Spa & Salon | | | | | | | | | | | | |
| VIBE 14-17 YEARS OLD | Youth Activities Open House | | | | | | | | | | | Youth Activities Open House | | | | Open for Teens | | Video Game Challenge | | | | | | | |
| EDGE 11-14 YEARS OLD | Youth Activities Open House | | | | | | | | | | | Youth Activities Open House | | | | Open for Tweens | | 4 Square Competition | | | | | | | |
| OCEANEER LAB 3-12 YEARS OLD | Wacky Relays | | Youth Activities Open House | | | | Magic PlayFloor | | | | | | | | | | | | | | | | | | |
| OCEANEER CLUB 3-12 YEARS OLD | Magic PlayFloor | | Dance Party | | Youth Activities Open House | | Open House | | Bingo | | | | Meet Your Counselors | | Monsters, Inc.: Open "Mike" Night | | Star Wars | | | | | | | | |

Mandatory Guest Assembly Drill 4:00 pm

All ship services will be suspended during this time.

Please refer to the posted drill instructions on the back of your stateroom door prior to heading to your Assembly Station.

You will not need your life jacket for the Guest Assembly Drill.



Your Assembly Station is indicated on your Key To The World card.


Disney DREAM

| Evening | 7:00 | 7:15 | 7:30 | 7:45 | 8:00 | 8:15 | 8:30 | 8:45 | 9:00 | 9:15 | 9:30 | 9:45 | 10:00 | 10:15 | 10:30 | 10:45 | 11:00 | 11:15 | 11:30 | 11:45 | 12:00 | | | | | | |
|---------------------------------|------------------|------------------------------------|--|-----------------|------|---------------------------------|--|---|---------------|---------------------|---|--|--|-------|--|-------|---|---|-----------------|------------------------------------|-------|-------------|----------------------------|-------------|--|--|--|
| FUNNEL VISION | | | Tangled (PG) Open Captioning Funnel Vision | | | | | | | | Monsters, Inc. (G) Open Captioning Funnel Vision | | | | | | Guardians of the Galaxy (PG-13) Open Captioning Funnel Vision | | | | | | | | | | |
| BUENA VISTA THEATRE | | | | | | | | | | | Mary Poppins Returns (PG) Duration: 2 Hours 10 Minutes | | | | | | Dumbo (PG) Duration: 1 Hour 52 Minutes | | | | | | | | | | |
| CHARACTERS | | | Mickey Mouse Balcony | | | | | | | | Belle Lobby Atrium (V) | | | | Mickey Mouse Balcony | | | | | | | | | | | | |
| | | | Rapunzel/Pluto Lobby Atrium (V) Lobby Atrium (H) | | | | | | | | Daisy Lobby Atrium (H) | | | | Donald Lobby Atrium (H) | | | | | | | | | | | | |
| FUN FOR ALL AGES | | Bingo Pre-Sales Evolution | Big X \$500 Bingo Evolution | | | Red Carpet Arrivals Preludes | | The Golden Mickeys Walt Disney Theatre | | | | | The Golden Mickeys After Party D Lounge | | So You Think You Think You Know Your Family? D Lounge | | | Family Superstar Karaoke D Lounge | | | | | | | | | |
| | | Family Dance Party Lobby Atrium | Mirror Mirror D Lounge | | | | | | | | | Smooth Sounds with Sunshine Trio Lobby Atrium | | | | | | | | | | | | | | | |
| | | | | | | | | | | | | | | | | | | | | | | | | | | | |
| ADULTS | | | 80's Music Trivia Pub 687 | | | | | | | | Cruise Staff DJ Evolution | | Dream Quest Evolution | | Match Your Mate Evolution | | | Silent DJ Party Evolution | | Cruise Staff DJ District Lounge | | | | | | | |
| | | | Lounge Love Songs with Charles Reuter Pink Wine and Champagne Bar | | | | | | | | | | 1820 Society Cove Cafe | | | | | Live Lounge with FireLites District Lounge | | | | | | | | | |
| VIBE 14-17 YEARS OLD | Cards Tournament | | | Game Challenge | | | GAGA Ball | | | Foosball Tournament | | | The Download | | | | | | Magic Show | | | | | Teen Choice | | | |
| EDGE 11-14 YEARS OLD | | | Cards Tournament | | | GAGA Ball | | | Wii Challenge | | | Profiles | | | Taking it to The Edge | | | Ice Breakers | | | | | Heroes and Villains | | | | |
| OCEANEER LAB 3-12 YEARS OLD | Ice Breakers | | | Get the Hook | | | Disney Animation: Creating a Character | | | | | Pluto's Pajama Party | | | | | | | Magic PlayFloor | | | Four Square | | | | | |
| OCEANEER CLUB 3-12 YEARS OLD | Game Challenge | | | Magic PlayFloor | | | Aloha Luau | | | Glow Jam | | | Toy Story Boot Camp | | | | | | | Go Fetch | | | Star Wars Galaxy Designers | | | | |

YOUTH ACTIVITIES OPEN HOUSE
A non-secured program with activities for families, adults and children to enjoy together.



FRIDAY, APRIL 5, 2019 - PORT CANAVERAL, FLORIDA

THE GOLDEN MICKEY'S
A Timeless Tribute

WALT DISNEY THEATRE
DECK 3 & 4, FORWARD
6:15 pm & 8:30 pm

As a courtesy to all Guests, we kindly advise that the saving of seats is **not** permitted in the Walt Disney Theatre.

Assistance available at the entrance to the Walt Disney Theatre 30 minutes prior to show time.

Character Meet and Greet Experience Reservation

Port Adventures Desk, Deck 5, Midship - 11:45 am - 2:00 pm

The following appearances require a reservation. Space is limited

For Guests who did not book online,
a limited number of reservations are available for:

- Princess Gathering
- Frozen Meet and Greet

Character Appearances

CINDERELLA

Balcony
11:30 am & 12:45 pm

BELLE

Balcony - 12:15 pm
Lobby Atrium (V) - 9:30 pm

SAILING AWAY

Deck 11 Stage - 4:30 pm

MICKEY MOUSE

Balcony
5:15 pm, 7:30 pm & 9:45 pm

MINNIE MOUSE

Lobby Atrium (H) - 5:30 pm

GOOFY

Lobby Atrium (V) - 5:45 pm

Rapunzel

Lobby Atrium (V) - 7:15 pm

PLUTO

Lobby Atrium (H) - 7:45 pm

DAISY DUCK

Lobby Atrium (H) - 9:30 pm

DONALD DUCK

Lobby Atrium (H) - 10:00 pm



(H) Hallway - (S) Starboard Side - (P) Port Side - (V) Vestibule

For details of daily Disney character appearances, refer to the character line on your Navigator Grid, or the digital character board in the Lobby Atrium.

Lines close 15 minutes after advertised start time.

SHIP DIRECTORY

YOUTH ACTIVITIES

| | | |
|----------------------------|--------------|--|
| DISNEY'S OCEANEER CLUB | DECK 5, MID | 12:00 PM - 3:30 PM 4:30 PM - 12:00 AM |
| DISNEY'S OCEANEER LAB | DECK 5, MID | 12:00 PM - 3:30 PM 4:30 PM - 12:00 AM |
| EDGE | DECK 13, MID | 12:00 PM - 3:30 PM 4:30 PM - 1:00 AM |
| IT'S A SMALL WORLD NURSERY | DECK 5, MID | 12:00 PM - 3:30 PM 4:30 PM - 12:00 AM |
| VIBE | DECK 4, FWD | 12:00 PM - 3:30 PM 4:30 PM - 1:00 AM |

POOLS & MORE

* Children under 12 must have adult supervision in pool areas.

| | | |
|-----------------------|--------------|--|
| AQUADUCK | DECK 12, AFT | 12:00 PM - 3:00 PM 4:30 PM - 10:00 PM |
| DONALD'S POOL | DECK 11, MID | 12:00 PM - 3:15 PM 6:00 PM - 10:00 PM |
| FUNNEL PUDDLE | DECK 12, FWD | 12:00 PM - 6:00 PM |
| MICKEY'S POOL | DECK 11, MID | 12:00 PM - 3:15 PM 4:30 PM - 10:00 PM |
| MICKEY'S SLIDE | DECK 11, MID | 12:00 PM - 3:00 PM 4:30 PM - 6:00 PM |
| NEMO'S REEF | DECK 11, MID | 12:00 PM - 3:15 PM 4:30 PM - 6:00 PM |
| QUIET COVE POOL (18+) | DECK 11, FWD | 12:00 PM - 11:00 PM |
| SATELLITE FALLS (18+) | DECK 13, FWD | 12:00 PM - 9:00 PM |

Please note, "selfie sticks" are not permitted in any aquatic area.

Complimentary pool vests are available for children to use in the pools onboard.
Located on the pool deck.

RECREATION

| | | |
|-----------------------------|-----------------|--|
| GOLF/SPORTS SIMULATOR | DECK 13, AFT | 12:00 PM - 3:15 PM 4:30 PM - 6:00 PM |
| GOOFY GOLF | DECK 13, AFT | 5:30 PM - 10:00 PM |
| GOOFY'S SPORTS DECK | DECK 13, AFT | 12:00 PM - 6:00 PM |
| MIDSHIP DETECTIVE AGENCY | DECK 2 & 5, MID | 12:00 PM - 11:00 PM |
| PORT ADVENTURES DESK | DECK 5, MID | 12:00 PM - 3:30 PM 4:30 PM - 10:00 PM |
| SENSES FITNESS CENTER (18+) | DECK 11, FWD | 12:00 PM - 10:00 PM |

GENERAL INFORMATION

| | | |
|--------------------------|-----------------|---|
| BUENA VISTA THEATRE | DECK 4 & 5, MID | SHOWTIMES |
| CONNECT@SEA DESK | DECK 4, MID | 1:00 PM - 3:30 PM 7:00 PM - 10:00 PM |
| DISNEY VACATION CLUB | DECK 4, MID | 5:00 PM - 10:00 PM |
| DISNEY VACATION PLANNING | DECK 4, MID | 5:00 PM - 10:00 PM |
| GUEST SERVICES | DECK 3, MID | 24 HOURS |
| HAIRBRAIDING | DECK 11, MID | 5:00 PM - 10:00 PM |
| MEDICAL HEALTH CENTER | DECK 1, FWD | 4:30 PM - 7:00 PM |
| PORT SHOPPING DESK | DECK 5, MID | 6:30 PM - 8:30 PM |
| PRELUDES | DECK 3, FWD | 5:30 PM - 9:00 PM |
| SENSES SPA AND SALON | DECK 11, FWD | 12:00 PM - 10:00 PM |
| SHUTTERS PHOTO GALLERY | DECK 4, MID | 7:00 PM - 10:30 PM |
| WALT DISNEY THEATRE | DECK 3 & 4, FWD | SHOWTIMES |

SHOPPING

| | | |
|--------------------------|--------------|---|
| BIBBIDI BOBBIDI BOUTIQUE | DECK 5, MID | 12:00 PM - 3:00 PM 5:00 PM - 9:00 PM |
| MICKEY'S MAINSAIL | DECK 3, FWD | 5:45 PM - 11:00 PM |
| SEA TREASURES | DECK 3, FWD | 5:45 PM - 11:00 PM |
| VISTA GALLERY | DECK 2, MID | |
| WHITE CAPS | DECK 3, FWD | 5:45 PM - 11:00 PM |
| WHOZITS & WHATZITS | DECK 11, MID | 12:00 PM - 3:15 PM 4:30 PM - 6:00 PM 9:00 PM - 11:00 PM |

DUE TO PORT REGULATIONS, WHEN THE SHIP IS DOCKED,
THE STORES MUST REMAIN CLOSED.

EVENING ATTIRE | Cruise Casual

DINING & LOUNGES

LUNCH

| | | |
|----------------------|--------------|---|
| CABANAS | DECK 11, AFT | 11:45 AM - 3:00 PM |
| ANIMATOR'S PALATE | DECK 3, AFT | 11:45 AM - 2:00 PM |
| FILLMORE'S FAVORITES | DECK 11, MID | 12:00 PM - 3:30 PM 4:30 PM - 6:00 PM |
| LUIGI'S PIZZA | DECK 11, MID | 12:00 PM - 3:30 PM 4:30 PM - 6:00 PM |
| TOW MATER'S GRILL | DECK 11, MID | 12:00 PM - 3:30 PM 4:30 PM - 6:00 PM |

DINNER

| | | |
|--|--------------|--------------------|
| ANIMATOR'S PALATE | DECK 3, AFT | 5:45 PM & 8:15 PM |
| ENCHANTED GARDEN | DECK 2, MID | 5:45 PM & 8:15 PM |
| PALO (18+) (RESERVATIONS REQ. & NON-FEE APPLIES) | DECK 12, AFT | 6:00 PM - 8:30 PM |
| REMY (18+) (RESERVATIONS REQ. & NON-FEE APPLIES) | DECK 12, AFT | 6:00 PM - 8:30 PM |
| ROYAL PALACE | DECK 3, MID | 5:45 PM & 8:15 PM |
| TOW MATER'S GRILL | DECK 11, MID | 6:00 PM - 11:00 PM |

LATE NIGHT SNACKS

| | | |
|---------------|--------------|---------------------|
| LUIGI'S PIZZA | DECK 11, MID | 9:30 PM - 12:00 AM |
| THE DISTRICT | DECK 4, AFT | 10:45 PM - 11:30 PM |

ADDED FEATURES

| | | |
|-------------------------------|--------------|--|
| BEVERAGE STATION | DECK 11, MID | 24 HOURS |
| EYE SCREAM | DECK 11, MID | 11:45 AM - 3:30 PM 4:30 PM - 11:30 PM |
| ROOM SERVICE | DIAL 0 | 24 HOURS |
| VANELLOPE'S SWEETS AND TREATS | DECK 11, AFT | 11:30 AM - 3:30 PM 4:30 PM - 10:30 PM |

ENTERTAINMENT - LOUNGES - BARS

Adults must be 21 and older to consume alcoholic beverages.

| | | |
|-------------------------------------|--------------|---------------------|
| BON VOYAGE | DECK 3, MID | 11:30 AM - 11:00 PM |
| COVE BAR (18+) | DECK 11, FWD | 11:30 AM - 10:30 PM |
| COVE CAFE (18+) | DECK 11, FWD | 11:30 AM - 12:00 AM |
| CURRENTS (18+) | DECK 13, FWD | 11:30 AM - 11:00 PM |
| D LOUNGE | DECK 4, MID | SHOWTIMES |
| DISTRICT LOUNGE (18+ AFTER 9:00 PM) | DECK 4, AFT | 11:30 AM - 2:00 AM |
| EVOLUTION (18+ AFTER 9:00 PM) | DECK 4, AFT | 9:30 PM - 12:00 AM |
| FROZONE TREATS | DECK 11, MID | 11:30 AM - 6:00 PM |
| MERIDIAN (18+) | DECK 12, AFT | 5:00 PM - 12:00 AM |
| OUTLOOK (18+) | DECK 14, MID | |
| PINK WINE AND CHAMPAGNE BAR (18+) | DECK 4, AFT | 5:00 PM - 12:00 AM |
| PUB 687 (18+ AFTER 9:00 PM) | DECK 4, AFT | 11:30 AM - 12:00 AM |
| SENSES JUICE BAR | DECK 11, FWD | 11:30 AM - 6:00 PM |
| SKYLINE (18+) | DECK 4, AFT | 5:00 PM - 12:00 AM |
| VISTA CAFE | DECK 4, MID | 11:30 AM - 10:30 PM |
| WAVES | DECK 12, AFT | 11:30 AM - 6:00 PM |

Public Health Advisory: Consuming raw or under-cooked meats, poultry, seafood, shellfish, or eggs may increase your risk for food borne illness, especially if you have certain medical condition.



MIDSHIP DETECTIVE AGENCY

Use your detective know-how and our special
detective "badge" to search the ship and catch your
criminal! Deck 2 & 5, Midship Kiosks.

Disney Cruising
PORT ADVENTURES

Visit the Port Adventures Desk,
Deck 5, Midship, for bookings & questions.

IMPORTANT NUMBERS

| | |
|--------------------|--------|
| Fire/Security: | 7-3001 |
| Medical Emergency: | 7-3000 |
| Health Center: | 7-1927 |