

VOYAGE NAVIGATOR




SUNDAY
MARCH 3, 2019
TO
SUNDAY
MARCH 10, 2019

CRUISE HIGHLIGHTS

SUNDAY
DAY AT SEA
Attire: Semi Formal

MONDAY
DAY AT SEA
Attire: Cruise Casual

TUESDAY
DAY AT SEA
Attire: Pirate or Cruise Casual



FROZEN, A MUSICAL SPECTACULAR
Walt Disney Theatre
6:00 pm & 8:30 pm



SHOWTIME: THE BEVERLY BELLES
Walt Disney Theatre
6:15 pm & 8:30 pm



SHOWTIME: JUNNK
Walt Disney Theatre
6:15 pm & 8:30 pm

WEDNESDAY
DAY AT SEA
Attire: Formal

THURSDAY
PUERTO VALLARTA, MEXICO
All Ashore: 7:00 am
All Aboard: 3:30 pm
Attire: Cruise Casual

FRIDAY
CABO SAN LUCAS, MEXICO
All Ashore: 7:30 am
All Aboard: 2:45 pm
Attire: Cruise Casual


SATURDAY
DAY AT SEA
Attire: Cruise Casual



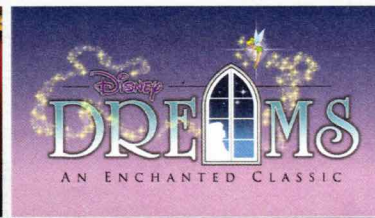
DISNEY ON BROADWAY STAR JOSH STRICKLAND
Walt Disney Theatre
6:15 pm & 8:30 pm



CREW TALENT SHOW
Walt Disney Theatre
6:15 pm & 8:30 pm



MOVIE NIGHT
Walt Disney Theatre
5:00 pm & 8:15 pm



DISNEY DREAMS: AN ENCHANTED CLASSIC
Walt Disney Theatre
6:00 pm & 8:30 pm

PANAMA CANAL

Stretching approximately 48 miles long, the Panama Canal is an international water passage between North and South America that connects the Atlantic to the Pacific. The canal passes through the Isthmus of Panama, allowing sea voyagers to save precious travel time and resources. A masterful feat of engineering, this legendary waterway is revered as one of the 7 wonders of the modern world. However, the "Path between the Seas" is not a natural wonder, it's a man-made triumph involving a series of lifts and lock gates made to raise ships and transport them through the waterway.

As you travel through the Panama Canal, have your camera at the ready! Bordered by lush, tropical rainforests, the canal is a spectacular sight full of photographic potential.

For those who can't make it out on deck, Bridge camera and Panama Canal narration is available on Channel 27-1.

FACTS ABOUT THE ORIGINAL PANAMA CANAL

- The official opening of the Panama Canal was August 15, 1914.
- The 50-mile long passage created an important shortcut for ships traveling between New York and California trimming nearly 8,000 miles from their voyage.
- Between 12,000 & 15,000 ships cross the Panama Canal every year.
- Every ship that transits the canal must pay a toll based on its size and cargo volume. Tolls for large ships can be as high as \$450,000.
- The lowest toll ever paid was \$0.36 cents by Richard Haliburton who swam the canal.
- A system of locks raises each ship 85 feet above sea level.

FACTS ABOUT THE NEW PANAMA CANAL

- The Panama Canal expansion started in 2007 and was completed in June 2016.
- The estimated cost of building the new locks was \$5.25 billion dollars.
- The allowed length of ships increased from 965 feet to 1200 feet. The allowed width of ships increased from 106 feet to 160 feet.
- The new lock chambers are 180 feet wide, 1,400 feet long and 60 feet deep.
- The new lock chambers hold 65% more water than the original locks and use 7% less water per transit.
- The total annual tonnage traveling through the Panama Canal will increase from 275 million tons to 600 million tons.
- The Disney Wonder was the first passenger ship to navigate entirely through the new locks - Aqua Clara and Cocoli.



Create the most memorable experiences during your Disney Cruise Line vacation with Port Adventures! Our Port Adventures are designed for you to see the best our ports have to offer. Stop by the Port Adventures Desk, Deck 3, Midship where our friendly team will be happy to assist you plan your adventure! There is an adventure for everyone on your Disney Wonder® vacation.

FEATURED VARIETY ACTS THIS WEEK



THE PHYSICAL COMEDY OF HEATH HYCHE

Heath uses stand-up comedy, quick-change costumes, original music, sound effects, and cleverly constructed props and scenery to take the audience on a journey through his vivid imagination and meet a cavalcade of manic characters. Heath Hyche's TV credits include "The Tonight Show with Jay Leno", "Last Comic Standing", and two seasons on "Blue Collar TV" alongside Jeff Foxworthy, Larry the Cable Guy, and Bill Engvall. On the big screen, Heath appeared in the films "Man on the Moon" with Jim Carrey and Will Ferrell's "Talladega Nights".



THE PERCUSSION & COMEDY OF JUNNK

JunNk use bins, bottles, ladders and drainpipes to create a lively, hilarious and utterly enthralling fast paced show, providing a fresh outlook on today's modern entertainment scene.



THE VOCAL TALENTS OF DISNEY THEATRICAL STAR JOSH STRICKLAND

Featuring the vocal talents of Disney Theatrical star Josh Strickland who originated the title role in Disney's Tarzan on Broadway.



DUELING PIANOS: PIANO PARTY!

Piano Party is a dynamic dueling piano duo rocking parties across the globe with our irresistible brand of sunny Florida fun! This Duo have played all around the world and rocked 'em all. Katie and Whitney are looking forward to rockin' the Disney Wonder!



THE ACAPPELLA VOCALS OF SIX APPEAL

The Acappella sensation that's growing across the nation is Six Appeal Vocal Band! Using only their voices, these six young men transform your favorite songs from multiple decades into new hits that all ages will love! Six Appeal will rock the stage with energetic dance move, soaring vocals, and just the right amount of humor; you'll be smiling and clapping along faster than you can say "No instruments!?"

FUN FOR ALL AGES HIGHLIGHTS



A PIRATES LIFE FOR ME

Calling all Pirates, we be! If ye have an adventurous spirit or pirate savvy, come spin the "Wheel of Destiny" for a treasure trove of fun be ripe for the takin' in this action packed pirate game show.



DISNEY JUNIOR PIRATE & PRINCESS DANCE PARTY

Calling all Pirates and Princesses! Come join us for a family dance party featuring music and fun activities. Whether you favor tiaras or treasure chests, there's something for you at our Disney Junior Pirate & Princess Dance Party!



DISNEY VACATION CLUB GROUP PREVIEW

Join us for our interactive group presentation to learn about taking magical vacations year after year! For more information, please see a Disney Vacation Club Cast Member on Deck 4, Midship, or call 7-2805 from your stateroom phone.



FAMILY SUPERSTAR KARAOKE

Join your Cruise Staff and sing along to your favorite song, fun for everyone.



JACKPOT BINGO

CASH prizes and raffle prizes to be won in our family friendly Bingo sessions with your Cruise Staff. Those under the age of 18 must be accompanied by an adult to play!



PIRATES IN THE CARIBBEAN DECK PARTY

Yer Disney Friends are all set for a swashbucklin' good time! It's a Pirate Celebration, me hearties! Hoist yourself to Deck 9 to enjoy a rowdy buccaneer bash we call Pirates IN the Caribbean Deck Party.



SO YOU THINK YOU KNOW YOUR FAMILY?

This fun-filled family game show is always full of surprises. Find out how well you know, or don't know your family!



WHO WANTS TO BE A MOUSEKETEER?

Your chance to get into the "hot seat" and win limited edition prizes. Or, play along as part of our live studio audience.

ADULT ACTIVITY HIGHLIGHTS



1820 SOCIETY (GUESTS 18-20 YEARS ONLY)

1820 Society is an exclusive option for young adult Guests. Come meet fellow passengers and learn about the excellent activities that the Disney Wonder offers to create the perfect cruise experience.



80'S FLASHBACK

The 80's are back! Join your Cruise Staff team, in testing your 80's knowledge in this high energy 80's revival.

ART OF THE THEME SHOW TOUR

Join us for a guided tour highlighting the design, Imagineering and artistry of the ship. This tour is reserved for Guests 18 and over.



DISNEY AT SEA WITH D23

Join us for an exciting look at what's new and what's next from all of Disney's wonderful worlds! From theme parks and movies, to vision, music and beyond, you won't want to miss a minute of this new show presented by D23, Disney's official fan club.



Senses Spa & Salon has a variety of seminars and fitness classes available throughout the cruise. Pamper yourself with therapeutic spa treatments of heat, steam, rain and water in luxurious and tranquil private rooms. Deck 9, Forward.

BEVERAGE SEMINARS

Your Beverage team has a host of tastings and seminars to entertain and educate you. Stop by Azure, Deck 3, Forward to pre-book these experiences (nominal fee applies).
Mixology - Stem to Stern Wine Tasting - Martini Tasting - Champagne Tasting
Beer Tasting - Cognac Tasting - Whisky Tasting
Tequila & Margarita Tasting - Chocolate & Liquor Tasting - Rum Tasting



GUEST BEVERAGE PRESENTER CHANNING DIAL

Channing Dial grew up in Phoenix, Arizona, and after graduating from Arizona State University, joined Southern Glazer's. After it's launch in 2016, Channing became an advocate of Código 1530 Tequila in downtown Denver, where the owner of Código 1530 took notice and recruited her on the team. She now shares Código 1530's story of using the highest quality ingredients to make the best tequila in the world.

GUEST PRESENTERS THIS WEEK

CAPTAIN KENNETH PUCKETT

Retired Master Mariner-US Navy-US Army and Senior Panama Canal Pilot and Port Captain; Captain Puckett, adjunct Professor of Marine Science was selected by the Panama Canal Commission to join the elite corps of Panama Canal Pilots. For 16 years he worked as a Senior Panama Canal Pilot and Canal Port Captain during which time he safely piloted over 1440 merchant and military vessels through the Panama Canal.

CHEF ROBERTO RIVERA

Roberto Rivera is Chef at Cinderella's Royal Table, Magic Kingdom. Curiosity around his grandmothers cooking started his culinary career; her food was so delicious compared to everyone else's so he started asking her questions about how she prepared dishes. He majored in Restaurant Management in College, and once graduated he went on to a full Culinary Arts program in Orlando FL.

BALLROOM DANCERS, WILLEM AND NATALIA

A native of Moscow, Natalia studied ballet and classical piano as a child and pursued her love of the arts at the Russian Academy of Theatre Arts, where she received an MFA with honors. After graduation, she danced professionally in Moscow before touring the world as a performer. Willem de Vries has been a professional Ballroom & Latin dancer, instructor, competitor, and choreographer for 17 years. During that time he has competed and taught around the world and won various regional, national, and international awards and titles.

GEORGE SCRIBNER

George Scribner is a Fine Artist, Animator and Filmmaker. He was born and raised in Panama City, Panama and has been with The Walt Disney Company for more than thirty-five years. In 1983 he became a Character Animator at Walt Disney Feature Animation and in 1988 directed Oliver and Company, a full-length animated feature. Commissioned by the Government of Panama to record the expansion of the Panama Canal, George spent more than nine years creating large scale oil paintings documenting the construction of this massive engineering marvel.

YOUTH ACTIVITIES INFO & HIGHLIGHTS



Dine & Play

As a convenience for families dining at 8:15 pm, our Youth Activities counselors will be available at the entrance of each restaurant to bring registered children to join the fun in the Youth Activities areas at the following times:

9:15 pm at the entrance of Triton's,
9:30 pm at the entrance of Tiana's Place and Animator's Palate.

Pre-School Fun

Disney's Oceaneer Club is reserved for only those between 3-5 years of age. This is a time for them to become acclimated to Disney's Oceaneer Club, make new friends and join in on a lot of fun-filled programs and activities. Please note after Pre-School Fun has concluded, Disney's Oceaneer Club will be open for Secured Programming for ages 3-12.

Youth Activities Open House

Open House is an opportunity for all to come and participate in a variety of exciting activities and free time in the Oceaneer Club, Oceaneer Lab, Edge and Vibe throughout the cruise. During these times secured programming will still be offered in the other venue for those looking to check their children into care.

Youth Activities Venue Tour

Come and take a tour of Disney's Oceaneer Club and Disney's Oceaneer Lab. This informative tour will give you the information you need to know about our exciting spaces and activities offered for children ages 3-12. Please see your Personal Navigator or the Navigator App for times.



3 - 12 years old

JOIN THE LION GUARD

Harness your inner animal and find out if you have what it takes to join the Lion Guard!

MILES' COSMIC EXPLORER ADVENTURES

Miles needs your help! Gadfly has stolen his tech, and it's up to you to solve clues and puzzles in order to return the missing items back to Miles.

SOFIA THE FIRST - MAGICAL STORYTELLING

You're invited to take part in Sorcery 101 at the Royal Prep Academy, where you'll learn a few spells and help retell one of Sofia's many magical adventures.



3 - 12 years old

LAVA FLOW

Build your own volcano and watch it erupt as you learn about the physics of volcanoes.

MAKE A SHOW DISNEY STYLE

OPEN CALL - kids needed for a fun, one of a kind, make it your own show. Working in teams you'll have everything you need to make your own show in 90 minutes or less. Whether you're a Beauty or a Beast, you're sure to have fun!

PISTON CUP CHALLENGE

It's Dinoco time and you're part of the pit crew! Design your own race car and see if you've got what it takes to end up in the winner's circle!



11 - 14 years old

HEROES AND VILLAINS

Join your favorite hero or villain team on a series of activities that will take place throughout the cruise.

DESCENDANT'S DEN DJ SPIN OFF

Photo Booth! DJ lessons! Fun games! Sing! Laugh! Dance! It's the next generation of fun - Descendants style!



14 - 17 years old

GOTCHA

You will try to eliminate your victim by various methods collecting points throughout the day, last person standing with the most points wins.

HAUNTED MANSION FAMILY PORTRAITS

Grim grinning ghosts come out to socialize as teens get transformed in a ghoulish photo shoot that is guaranteed to bring the spooks out for a swinging wake!

BUENA VISTA THEATRE

Deck 5, Aft

FEATURE MOVIES THIS VOYAGE

SUNDAY - DAY AT SEA

10:00 am	PG	Ralph Breaks the Internet
3:00 pm	G	Movie Classic: Bedknobs and Broomsticks
5:30 pm	PG-13	Thor: Ragnarok
8:00 pm	PG-13	Thor: Ragnarok
10:30 pm	PG	Mary Poppins Returns

MONDAY - DAY AT SEA

2:45 pm	PG	Movie Classic: Pete's Dragon (1977)
5:30 pm	PG-13	Black Panther
8:15 pm	PG-13	Black Panther
11:00 pm	PG	Christopher Robin

TUESDAY - DAY AT SEA

10:00 am	PG-13	Ant-Man and The Wasp
1:45 pm	PG-13	Pirates of the Caribbean: The Curse of the Black Pearl
4:30 pm	PG-13	Avengers: Infinity War
7:30 pm	PG-13	Avengers: Infinity War
10:45 pm	PG-13	Pirates of the Caribbean: The Curse of the Black Pearl

WEDNESDAY - DAY AT SEA

8:30 am	PG	Ralph Breaks the Internet
11:00 am	G	Movie Classic: 20,000 Leagues Under the Sea
1:45 pm	PG	Mary Poppins Returns
5:30 pm	PG	The Incredibles 2
8:00 pm	PG	The Incredibles 2
10:30 pm	PG	Ralph Breaks the Internet

THURSDAY - PUERTO VALLARTA, MEXICO

8:30 am	G	Movie Classic: The Parent Trap (1961)
11:00 am	PG	The Incredibles 2
1:15 pm	PG	The Nutcracker & the Four Realms
3:15 pm	PG	Movie Classic: Saving Mr. Banks
5:45 pm	PG-13	Ant-Man and the Wasp
8:15 pm	PG-13	Ant-Man and the Wasp
10:45 pm	PG	The Incredibles 2

FRIDAY - CABO SAN LUCAS, MEXICO

11:30 am	PG	Mary Poppins Returns
2:45 pm	PG-13	Solo: A Star Wars Story
5:30 pm	PG	Ralph Breaks the Internet
8:00 pm	PG	Ralph Breaks the Internet

SATURDAY - DAY AT SEA

2:00 pm	PG	Mary Poppins Returns
10:45 pm	PG	Mary Poppins Returns

Subject to change.



MORE TO ENJOY ONBOARD

NEW SUMMER 2020 ITINERARIES

New Summer 2020 Itineraries announced! Be among the first to experience sailings in Europe, Alaska, the Caribbean and the Bahamas with your family! And for the first time in five years, Disney Magic will return to the Greek Isles on three special sailings in the Mediterranean. Visit Disney Vacation Planning, Deck 4, Midship for more information. Disney Vacation Planning tends to get busy on the last day of sailing. Don't miss the opportunity to plan your next Disney vacation.

DISNEY VACATION CLUB® GROUP PREVIEW

Join us for our interactive group presentation to learn about taking magical vacations year after year! For more information, please see a Disney Vacation Club Cast Member on Deck 4, Midship, or call 7-2805 from your stateroom phone.

PORT SHOPPING INFORMATION

Come and meet Richard, your Port Shopping Guide, at the Port Shopping Desk, Deck 3, Midship from 7:00 pm - 8:30 pm for a complimentary charm. Don't miss the Port Shopping Talk on Day at Sea, March 6th in the Promenade Lounge, Deck 3, Midship, at 3:00 pm for all of your Port Shopping information and to enter a raffle for a chance to win a Diamond Pendant. Tune into Channel 24-6 all cruise long for more Port Shopping information.

Connect@Sea

We are now offering a NEW and improved Internet service to stay connected on your cruise like no other in the industry! Internet packages range from \$0.25 per MB - \$89.00 (1000 MB package). For more information contact your Connect@Sea Expert or Guest Services onboard.

RELIGIOUS SERVICES

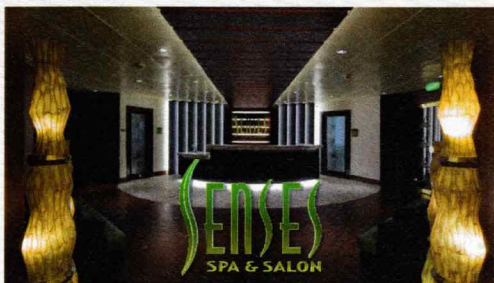
Groups who need a location to practice their faith may contact Guest Services for availability information.

DISNEY CRUISE LINE RETURNS TO GREECE

Set sail with Disney Cruise Line during May—September 2020 as Disney Magic makes a grand tour of Europe, including a return to the Greek Isles on special Mediterranean sailings and 5 new ports of call across all European itineraries! Explore enchanting locales in the Mediterranean like Rome and Barcelona or journey to the British Isles and Scandinavia. Visit the Disney Vacation Planning Desk, Deck 4, Midship for more information.



SENSES SPA & SALON



DECK 9, FORWARD
Extension 7-1465

RAINFOREST

Come enjoy our serenity lounge, with heated chairs, dry sauna, aromatherapy steam rooms and rainfall, misting showers.

REJUVENATION SPA CONSULTATIONS

Ready to enhance your natural beauty? Book your free Facial Rejuvenation consultation with our Rejuvenation Doctor at the Senses Spa.

ONBOARD ACUPUNCTURE

Acupuncture is a safe and effective medicine that allows your body to heal itself, and is effective for various health conditions. See your onboard Acupuncturist for your free consultation.

IONITHERMIE

Lose between 1 – 8 inches. Speed up your metabolism. Firm muscle tone. Improve appearance of cellulite. \$155/1 session or \$299/3 sessions.

BIOTEC FACIALS

Our revolutionary facials address skin tone, blemishes and fine lines to transform the texture of the skin. The ultrasonic peel, massage and light therapy deliver a complexion that has never been smoother.

AN 18% AUTO GRATUITY IS ADDED TO ALL SENSES SPA SERVICES.

MERCHANDISE SHOPPING



DECK 4, FORWARD

TAG HEUER TIMEPIECES

Travel through time with TAG Heuer; and discover the luxury Swiss watchmaker's latest collection. Visit White Caps, Deck 4, Forward.

EFFY JEWELRY SPECIAL OFFER

The stylish Effy jewelry pieces are designed to allow you the opportunity to mix and match to create a look that's all your own. Receive a complimentary Effy scarf and jewelry pouch with each Effy jewelry purchase. While supplies last. White Caps, Deck 4, Forward.

BIBBIDI BOBBIDI BOUTIQUE

A makeover fit for a princess! Fairy Godmothers-in-Training are ready with magic and pixie dust to give your Prince and Princess the transformation of a lifetime. Make your reservations by visiting Bibbidi Bobbidi Boutique, Deck 10, Forward, Port Side, or dialing extension 7-10878. Limited space available.

HELPFUL SHOPPING TIP

While shopping onboard, you may collect your items from both stores before proceeding to checkout at any register. No need to have to wait in line in each store to pay for your items separately! Mickey's Mainsail and White Caps, Deck 4, Forward.

DUE TO PORT REGULATIONS, WHEN THE SHIP IS DOCKED, THE STORES WILL REMAIN CLOSED.

SHUTTERS PHOTO GALLERY



DECK 4, AFT

DIGITAL PACKAGE

Looking for a digital compilation of your cruise photos to enjoy at home? Purchase Get The Picture! photo USB.

GET THE PICTURE!

Take home all your stateroom photos from this cruise on a USB! Terms and conditions apply. Visit Shutters on Deck 4, Aft and ask your friendly Shutters staff for more information. Get The Picture! Hurry! Order yours now.

PHOTO BOOK

Turn your magical vacation memories into an impressive keepsake with a personalized PhotoBook. Order by 9:30 pm on the final night of the cruise.

PRIVATE STUDIO PORTRAITURE

Book our exclusive and contemporary Private Studio experience today and capture these memories. No obligation to purchase. Black and White only.

PHOTOS ARE AVAILABLE FOR VIEWING ON OUR INTERACTIVE PHOTO KIOSKS APPROXIMATELY FIVE HOURS AFTER BEING TAKEN AND ARE ONLY AVAILABLE FOR PURCHASE DURING THIS CRUISE.

IMPORTANT INFORMATION

Security Notice/ Unaccompanied Minor Ashore
All Guests (including children) who wish to disembark or embark the ship are required to present their Key to the World card at the gangway. A photo ID is also required for those Guests who are 18 years of age or older. Guests under the age of 18 are required to have a Parent, Guardian or other responsible adult complete the "Traveling with Minors" section of "My Online Check-In" prior to sailing or sign an authorization form at the Guest Services Desk if they wish to go ashore unaccompanied or with any adult from another stateroom.

Incident Weather
For the safety of all Guests, outdoor events may be changed due to unforeseen weather conditions.
Insect Repellent Advisory
The Centers for Disease Control and Prevention recommends wearing long-sleeved shirts and pants along with insect repellent to protect against mosquito bites and related illnesses when going ashore. Complimentary insect repellent is available on the pier as you exit the ship. Insect repellent is also available for purchase in White Caps. When using both sunscreen and insect repellent, use sunscreen first and apply insect repellent on top of sunscreen.

Corridor Quiet Hours
As a courtesy to all our Guests, please recognize quiet hallway hours from 10:00 pm til 8:00 am.
No Reserved Seats Policy
As a courtesy to all our Guests, we kindly advise that the saving of seats is not permitted in the Walt Disney Theatre, and the saving of the sun loungers is not permitted on Deck 9 and 10. Items left unattended will be returned to lost and found at Guest Services, Deck 3 Midship.
Cold and Flu Reminder
Please wash hands frequently and thoroughly, particularly before meals. Contact the Health Center by dialing 7-1927, should anyone in your party become ill.

Smoking
For the comfort of our Guests, the following areas are designated as smoking areas:
*Deck 9, Forward, Port Side
*Deck 4, Starboard side from 6:00 pm to 6:00 am only (all of Deck 4 is non-smoking from 6:00 am to 6:00 pm)
Smoking is prohibited inside all Guest staterooms and on stateroom verandahs. Guests found smoking in their staterooms or on their verandahs will be charged a \$250 stateroom recovery fee. Electronic cigarettes may only be used in designated smoking areas.

Walt Disney Theatre
Theatrical performances may use artificial fog, strobe lights, pyrotechnics and other special effects. For the safety of our performers, and the comfort of those around you, the use of any photography, video recording device or any electronic equipment is prohibited.
Verandah Safety
Please do not leave any personal items on your verandah that may be blown overboard or present a fire hazard if left unattended. Do not throw anything over the ship's side. Guests should not sit, lean or climb on the railing or leave children unattended on the verandah. Do not open the verandah and stateroom doors simultaneously as this may create a wind effect and could cause the doors to slam unexpectedly.

PERSONAL NAVIGATOR



Evening Attire:
Semi Formal

SUNDAY, MARCH 3, 2019

DAY AT SEA

Morning	8:30	8:45	9:00	9:15	9:30	9:45	10:00	10:15	10:30	10:45	11:00	11:15	11:30	11:45	12:00	12:15	12:30	12:45	1:00	1:15	1:30
FUNNEL VISION	A Goofy Movie (G) CC Open Captioning						Tangled (PG) CC Open Captioning						Ice Carving Deck 9 Stage			Frozen (PG) CC Open Captioning					
BUENA VISTA THEATRE	Daily Mass						Ralph Breaks the Internet (PG) Duration: 1 Hour 58 Minutes						Shanghai Disneyland Paintings featuring George Scribner								
CHARACTERS	Hook & Smeek Lobby Atrium (P)			Stitch Lobby Atrium (P)			Max Lobby Atrium (P)			Pluto Gazebo DK 9			Mickey Gazebo DK 9			Chip & Dale Gazebo DK 9					
FUN FOR ALL AGES	Daily Mass Buena Vista Theatre		Good Morning DISNEY WONDER D Lounge & Channel 28-3		Disney Trivia Promenade Lounge		Post Panama Canal Transit Q&A Featuring Captain Ken Puckett Walt Disney Theatre		The Ultimate Quest Azure		Crafts: Buttons Promenade Lounge		Disney Vacation Club Group Preview D Lounge		Shanghai Disneyland Paintings featuring George Scribner Buena Vista Theatre						
ADULTS	Friends of Bill W. Tiana's Place		Walk A Mile Preludes		Art of The Theme Show Tour Palo		ANYONE CAN COOK D Lounge - Oil-Poached Octopus		Brainteasers Trivia Crown & Fin Pub		Dining Team: Origami Animator's Palate		Lunch Cabanas		Movie Tunes Trivia Azure						
VIBE	Youth Activities Open House CH						Brain Teasers						Star Wars™ Jedi Challenges								
EDGE	Youth Activities Open House CH						Brain Teasers						Animation Antics		Hero Vision Iron Man Experience						
OCEANEER LAB	Open House CH						Oceaneer Rangers CH		Open House		Human Bingo		Lunch								
OCEANEER CLUB	Foam Block Building				Game Challenge				All About Me				Lunch in Disney's Oceaneer Lab								

Afternoon	1:45	2:00	2:15	2:30	2:45	3:00	3:15	3:30	3:45	4:00	4:15	4:30	4:45	5:00	5:15	5:30	5:45	6:00	6:15	6:30	6:45			
FUNNEL VISION	Monsters, Inc. (G) CC Open Captioning						The Mighty Ducks (PG) CC Open Captioning						Inside Out (PG) CC Open Captioning											
BUENA VISTA THEATRE	Movie Classic: Bedknobs and Broomsticks (G) Duration: 1 Hour 57 Minutes						Thor: Ragnarok (PG-13) Duration: 2 Hours 10 Minutes																	
CHARACTERS	Daisy Gazebo DK 9			Minnie Gazebo DK 9			Goofy Preludes			Mickey DK4 Mid (S)			Pluto Preludes			Minnie DK4 Mid (S)			Chip & Dale Preludes			Daisy DK5 Mid (S)		
FUN FOR ALL AGES	Towel Folding D Lounge		BOAT-BUILDING BASH Sign-Ups Promenade Lounge		How to Draw featuring George Scribner Animator's Palate		Bingo Pre Sales		Mega Raffle Jackpot BINGO Azure		Pop Through the Ages with Deep Sea Jivers Lobby Atrium		Disney Classics with The Belle Adventure Promenade Lounge		Frozen A MUSICAL SPECTACULAR Walt Disney Theatre									
ADULTS	Crafts: Memory Pages Crown & Fin Pub		Stitch's Space Goo CH Disney's Oceaneer Lab		Know It All Trivia Crown & Fin Pub		Chill Out and Hang Out with Rob Lamont Quiet Cove		Cruisin' Solo Gathering Cove Cafe															
VIBE	Dive into DJ'ing						Teen Choice						Marshmallow Olympics											
EDGE	Brains and Brawns						Tween Choice						Craft Corner		Wall-E & Friends Robot Building									
OCEANEER LAB	Open House						Stitch's Space Goo CH		Adult Exclusive Open House CH		All About Me		Elephant Soccer		Dinner									
OCEANEER CLUB	S.H.I.E.L.D. Secret Agent 101				Elephant Soccer				Go Fetch				Pre-School Fun (3-5 Years Old)		Youth Activities Open House CH									

Evening	7:00	7:15	7:30	7:45	8:00	8:15	8:30	8:45	9:00	9:15	9:30	9:45	10:00	10:15	10:30	10:45	11:00	11:15	11:30	11:45	12:00
FUNNEL VISION	Big Hero 6 (PG) CC Open Captioning						Moana (PG)														
BUENA VISTA THEATRE	Thor: Ragnarok (PG-13) Duration: 2 Hours 10 Minutes						Mary Poppins Returns (PG) Duration: 2 Hours 10 Minutes														
CHARACTERS	Goofy Preludes		Mickey DK4 Mid (S)		Pluto Preludes		Minnie DK4 Mid (S)		Donald DK5 Mid (S)		Mickey DK4 Mid (S)		Daisy DK5 Mid (S)		Minnie DK4 Mid (S)		Chip & Dale Preludes		Pluto Preludes		
FUN FOR ALL AGES	Family Karaoke D Lounge		Ballroom Dancing with Willem and Natalia Azure		Frozen A MUSICAL SPECTACULAR Walt Disney Theatre		Family Dance Party D Lounge		Game Show: The Feud D Lounge		Family Animation D Lounge		Mixtape Melodies Lobby Atrium		Late Night Piano with Sean Flowers Promenade Lounge						
ADULTS	TV Tunes Trivia Crown & Fin Pub		Chill Out and Hang Out Crown & Fin Pub		The Percussion & Comedy of JUNK Azure		Majority Rules Azure		The Percussion & Comedy of JUNK Azure		Cruise Staff DJ Azure										
VIBE	Craft Corner						Disney Cruise Line Trivia						Game Challenge		Invade the Club						
EDGE	Youth Activities Open House CH						Game Challenge						Heroes and Villains		Invade the Club						
OCEANEER LAB	4 Square Competition				Bingo				A to Z Scavenger Hunt				Pathfinders								
OCEANEER CLUB	Olaf's Summer Day				Adventures with Anna				Wacky Relays				Ultimate Challenge								

DRINK OF THE DAY Double Crown (Alcoholic)
Virgin Bloody Cesar (Non-Alcoholic)

FOLD

FOLD

FOLD

ASL - AMERICAN SIGN LANGUAGE INTERPRETED

YOUTH ACTIVITIES OPEN HOUSE A non-secured program with activities for families, adults and children to enjoy together.



FROZEN

A MUSICAL SPECTACULAR

WALT DISNEY THEATRE

Deck 4, Forward
6:00 pm & 8:30 pm

As a courtesy to all Guests, we kindly advise that the saving of seats is **not** permitted in the Walt Disney Theatre.

Assistance is available at the entrance to the Walt Disney Theatre 30 minutes prior to show time.

Character Appearances

CAPTAIN HOOK & MR SMEE

Lobby Atrium (P) - 9:15 am

STITCH

Lobby Atrium (P) - 9:45 am

MAX

Lobby Atrium (P) - 10:15 am

PLUTO

Gazebo DK 9 - 11:30 am
Preludes
5:00 pm, 7:45 pm & 10:15 pm

GOOFY

Gazebo DK 9 - 12:00 pm
Preludes
4:30 pm & 7:15 pm

MICKY MOUSE

Gazebo DK 9 - 12:30 pm
DK4 Mid (S)
4:45 pm, 7:30 pm & 9:45 pm

DONALD DUCK

Gazebo DK 9 - 1:00 pm
DK5 Mid (S)
4:45 pm, 7:30 pm & 9:30 pm

CHIP & DALE

Gazebo DK 9 - 1:30 pm
Preludes
5:30 pm & 9:45 pm

DAISY DUCK

Gazebo DK 9 - 2:00 pm
DK5 Mid (S)
5:15 pm, 8:00 pm & 10:00 pm

MINNIE MOUSE

Gazebo DK 9 - 2:30 pm
DK4 Mid (S)
5:15 pm, 8:00 pm & 10:15 pm



(S) Starboard Side - (P) Port Side

For details of daily Disney character appearances, refer to the character line on your Navigator Grid, or the digital character board in the Lobby Atrium. Lines close 15 minutes after advertised start time.

SHIP DIRECTORY

YOUTH ACTIVITIES

DISNEY'S OCEANEER CLUB	DECK 5, MID	9:00 AM - 10:00 PM
DISNEY'S OCEANEER LAB	DECK 5, MID	10:00 AM - 12:00 AM
IT'S A SMALL WORLD NURSERY	DECK 5, AFT	9:00 AM - 11:00 PM
EDGE	DECK 9, MID	9:00 AM - 12:00 AM
VIBE	DECK 11, MID	10:00 AM - 12:00 AM

POOLS

Children under 12 years of age must have adult supervision in all pools.

AQUALAB	DECK 9, AFT	9:00 AM - 6:00 PM
DORY'S REEF	DECK 9, AFT	9:00 AM - 6:00 PM
GOOFY'S POOL	DECK 9, MID	9:00 AM - 10:00 PM
TWIST N' SPOUT	DECK 9, AFT	9:00 AM - 6:00 PM
QUIET COVE POOL (18+)	DECK 9, FWD	6:00 AM - 12:00 AM

Please note, "selfie sticks" are not permitted in any aquatic area.
Complimentary pool vests are available for children to use in the pools onboard. They are located on the pool deck.

RECREATION

CHILL SPA	DECK 9, FWD	8:00 AM - 10:00 PM
PORT ADVENTURES DESK	DECK 3, MID	10:00 AM - 2:00 PM 4:00 PM - 6:00 PM 7:00 PM - 8:30 PM
SENSES FITNESS CENTER (18+)	DECK 9, FWD	6:00 AM - 10:00 PM
WIDE WORLD OF SPORTS DECK	DECK 10, FWD	24 HOURS

GENERAL INFORMATION

BUENA VISTA THEATRE	DECK 5, AFT	SHOWTIMES
CONNECT@SEA DESK	DECK 3, AFT	9:00 AM - 12:00 PM 1:00 PM - 3:00 PM 7:00 PM - 10:00 PM
DISNEY VACATION CLUB DESK	DECK 4, MID	9:00 AM - 11:00 AM 1:30 PM - 10:00 PM
DISNEY VACATION PLANNING DESK	DECK 4, MID	9:00 AM - 12:00 PM 4:00 PM - 9:00 PM
FUNNEL VISION	DECK 9, MID	SHOWTIMES
GUEST SERVICES	DECK 3, MID	24 HOURS
MEDICAL HEALTH CENTER	DECK 1, FWD	9:30 AM - 11:00 AM 4:30 PM - 7:00 PM
PORT SHOPPING DESK	DECK 3, MID	7:00 PM - 8:30 PM
PRELUDES	DECK 4, FWD	SHOWTIMES
SENSES SPA AND SALON	DECK 9, FWD	8:00 AM - 10:00 PM
SHUTTERS PHOTO GALLERY	DECK 4, AFT	10:00 AM - 10:30 PM
WALT DISNEY THEATRE	DECK 4, FWD	SHOWTIMES

SHOPPING

ART GALLERY	DECK 4, MID	
BIBBIDI BOBBIDI BOUTIQUE	DECK 10, FWD	9:00 AM - 9:00 PM
MICKEY'S MAINSAIL	DECK 4, FWD	9:30 AM - 10:30 PM
QUACKS	DECK 9, MID	
SEA TREASURES	DECK 3, FWD	6:30 PM - 10:00 PM
WHITE CAPS	DECK 4, FWD	9:30 AM - 10:30 PM

Verandah Safety

Please do not leave any personal items on your verandah that may be blown overboard or present a fire hazard if left unattended. Do not throw anything over the ship's side. Guests should not sit, lean or climb on the railing or leave children unattended on the verandah. Do not open the verandah and stateroom doors simultaneously as this may create a wind effect and could cause the doors to slam unexpectedly.

Environmental Message

With Disney's commitment to the environment, please refrain from throwing anything over the ship's side.

Sunscreen/Insect Repellent Advisory

Protect against mosquito bites and related illnesses by applying insect repellent on top of sunscreen when going ashore.

Cold and Flu Reminder

Wash hands frequently, particularly before meals. Contact the Health Center at 7-1927, should anyone in your party become ill.

Smoking

For the comfort of our guests, the following areas are designated as smoking areas:
• Deck 9 Forward, Port Side
• Deck 4, Starboard Side from 6:00 pm to 6:00 am only (all of Deck 4 is non-smoking from 6:00 am to 6:00 pm)

Smoking is prohibited inside all guest staterooms and on stateroom verandahs. Guests found smoking in their staterooms or on their verandahs will be charged a \$250 stateroom recovery fee.

DINING & LOUNGES

BREAKFAST

CABANAS	DECK 9, AFT	7:30 AM - 11:30 AM
DAISY'S DE-LITES	DECK 9, AFT	7:00 AM - 9:00 AM
TRITON'S (Brunch)	DECK 3, MID	9:00 AM - 12:30 PM

LUNCH

CABANAS	DECK 9, AFT	11:45 AM - 2:00 PM
DAISY'S DE-LITES	DECK 9, AFT	10:30 AM - 6:00 PM
PALO BRUNCH (18+)	DECK 10, AFT	10:00 AM - 12:30 PM
PETE'S BOILER BITES	DECK 9, AFT	10:30 AM - 6:00 PM
PINOCCHIO'S PIZZERIA	DECK 9, MID	10:30 AM - 6:00 PM
TRITON'S (Brunch)	DECK 3, MID	9:00 AM - 12:30 PM

DINNER

ANIMATOR'S PALATE	DECK 4, AFT	5:45 PM & 8:15 PM
CABANAS TABLE SERVICE	DECK 9, AFT	6:30 PM - 8:30 PM
PALO (18+)	DECK 10, AFT	6:00 PM - 8:30 PM
PETE'S BOILER BITES	DECK 9, AFT	6:00 PM - 9:30 PM
TIANA'S PLACE	DECK 3, AFT	5:45 PM & 8:15 PM
TRITON'S	DECK 3, MID	5:45 PM & 8:15 PM

LATE NIGHT SNACKS

CROWN & FIN PUB (18+ AFTER 9:00 PM)	DECK 3, FWD	10:30 PM - 11:30 PM
PINOCCHIO'S PIZZERIA	DECK 9, MID	9:30 PM - 12:00 AM
PROMENADE LOUNGE	DECK 3, AFT	10:30 PM - 11:30 PM

ADDED FEATURES

BEVERAGE STATION	DECK 9, AFT, PORT SIDE	24 HOURS
EYE SCREAM	DECK 9, MID	10:30 AM - 11:00 PM
ROOM SERVICE	DIAL 4330	24 HOURS

ENTERTAINMENT - LOUNGES - BARS

Adults must be 21 and older to consume alcoholic beverages.

AZURE (18+ AFTER 9:00 PM)	DECK 3, FWD	9:30 PM - 1:30 AM
CADILLAC LOUNGE (18+)	DECK 3, FWD	6:00 PM - 12:30 AM
COVE CAFE (18+)	DECK 9, MID	6:30 AM - 12:00 AM
CROWN & FIN PUB (18+ AFTER 9:00 PM)	DECK 3, FWD	12:30 PM - 12:00 AM
D LOUNGE	DECK 4, MID	SHOWTIMES
PINOCCHIO'S PIZZERIA	DECK 9, MID	9:30 AM - 12:00 AM
PRELUDES	DECK 4, FWD	SHOWTIMES
PROMENADE LOUNGE	DECK 3, AFT	8:00 AM - 12:00 AM
SIGNALS (18+)	DECK 9, FWD	9:30 AM - 10:30 PM
SULLEY'S SIPS	DECK 9, MID	7:00 AM - 5:30 PM

Public Health Advisory: Consuming raw or under-cooked meats, poultry, seafood, shellfish, or eggs may increase your risk for food borne illness, especially if you have certain medical conditions.

SPECIALS OF THE DAY

Senses Spa & Salon - GoSmile Teeth Whitening

Learn about our amazing onboard GO Smile teeth whitening service. Lift the shade of your teeth from 1-6 shades. \$149 Single, \$258 Couples.

Alex and Ani Available onboard!

Perfect for the Disney fan with a flair for fashion, head to White Caps where you'll find the stylish bangles by Alex and Ani featuring Disney-inspired charms such as the specially designed Disney Cruise Line charm. Deck 4, Forward.

Shutters - Lifestyle Portraits

The most popular family portrait on board. We capture your personality with fun and excitement. Lobby Atrium, Deck 3 Midship from 5:15 pm-6:00 pm, 7:15-8:30 pm and 9:30pm-10:30pm.

IMPORTANT NUMBERS

Fire/Security:	7-3001
Medical Emergency:	7-3000
Health Center:	7-1927