

VOYAGE NAVIGATOR



SUNDAY
FEBRUARY 24, 2019

TO

SATURDAY
MARCH 2, 2019

CRUISE HIGHLIGHTS

SUNDAY

PORT CANAVERAL, FLORIDA
Port Departure: 5:00 pm
All Aboard: 4:00 pm
Attire: Cruise Casual



SHOWTIME: THE GREAT DUBOIS
Walt Disney Theatre
6:15 pm & 8:30 pm

MONDAY

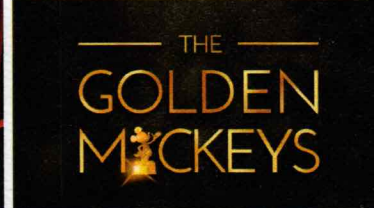
DISNEY CASTAWAY CAY
All Ashore: 8:30 am
All Aboard: 4:00 pm
Attire: Cruise Casual



SHOWTIME: MIKE SUPER
Walt Disney Theatre
6:15 pm & 8:30 pm

TUESDAY

DAY AT SEA
Attire: Formal



THE GOLDEN MICKEYS
Walt Disney Theatre
6:15 pm & 8:30 pm

WEDNESDAY

GEORGE TOWN, GRAND CAYMAN
First Tender: 10:30 am
Last Tender: 5:30 pm
Attire: Cruise Casual

THURSDAY

DAY AT SEA
Attire: Cruise Casual

FRIDAY

CARTAGENA, COLOMBIA
All Ashore: 7:00 am
All Aboard: 2:30 pm
Attire: Cruise Casual

SATURDAY

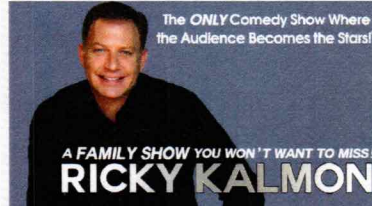
PANAMA CANAL
Attire: Cruise Casual



SHOWTIME: FLIGHT CREW
Walt Disney Theatre
6:15 pm & 8:30 pm



SHOWTIME: MARYELLEN HOOPER
Walt Disney Theatre
6:15 pm & 8:30 pm



SHOWTIME: RICKY KALMON
Walt Disney Theatre
6:15 pm & 8:30 pm



SHOWTIME: THE BEVERLY BELLES
Walt Disney Theatre
6:15 pm & 8:30 pm

Subject to change.

WELCOME ABOARD!

YOUR STATEROOM & LUGGAGE

Staterooms will be ready at 1:30 pm. To allow your Stateroom Host/ess time to prepare your room, please do not remove the blue stanchion straps. Stateroom hosts will deliver luggage throughout the day until 5:30 pm.

STATEROOMS WITH BUNK BEDS

Bunk beds are recessed into the ceiling and will be prepared during evening turndown service by your Stateroom Host/ess.

STATEROOM SAFE

Each stateroom is equipped with a secured storage safe. Instructions for use are located on the safe.

TO CHANGE DINING ASSIGNMENT

Requests for different seating times will be taken today:

- 12:00 pm - 3:00 pm; Book in D Lounge, Deck 4, Mid or please dial 7-10891 and leave a voicemail.

PALO DINING RESERVATIONS

Reservations are required and will be taken on a first come basis today:

- 12:00 pm - 3:00 pm; Book in D Lounge, Deck 4, Mid or please dial 7-6843 and leave a voicemail.

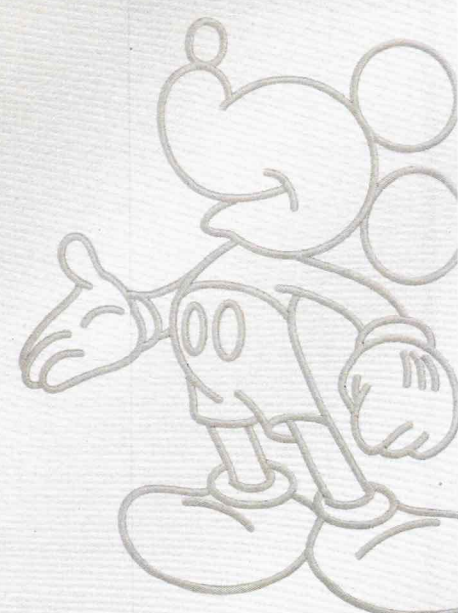
Adult Exclusive Dining Opportunity! Guests are invited to make 2 dinner reservations at our adult-exclusive restaurant, Palo. This includes one reservation on embarkation evening and one more on another night of the cruise. Reservations are subject to availability and a specialty dining charge will apply.

DINNER

5:45 pm - First seating 8:15 pm - Second seating

Please check your Key To The World Card for details of your dining rotation, and bring them to your specific dining location. There is no need to wait in line prior to dinner. Dining Rooms open at designated seating times and your table is reserved each night of your cruise.

AP = Animator's Palate, Deck 4, Aft TR = Triton's, Deck 3, Midship TP = Tiana's Place, Deck 3, Aft



Create the most memorable experiences during your Disney Cruise Line vacation with Port Adventures! Our Port Adventures are designed for you to see the best our ports have to offer. Stop by the Port Adventures Desk, Deck 3, Midship where our friendly team will be happy to assist you plan your adventure!

There is an adventure for everyone on your Disney Wonder® vacation.

IMPORTANT NUMBERS

Fire/Security: 7-3001

Medical Emergency: 7-3000

Health Center: 7-1927

FEATURED VARIETY ACTS THIS WEEK



THE PHYSICAL COMEDY OF THE GREAT DUBOIS

The Great DuBois is a fast-paced, all ages, variety show showcasing incredible feats of juggling, hula hoops, unicycle, aerial, circus stunts, contortion, magic, and audience interaction all wrapped in a blanket of comedy.



THE MAGIC & ILLUSION OF MIKE SUPER

Mike's ever-growing popularity has garnered him many prestigious awards and honors, including being the only magician in history to win a live magic competition on primetime US network television. In addition, his other accomplishments include being named Entertainer of the Year, Best Performing Artist of the Year and Best Novelty Performer of the Year.



THE JUMP ROPE STUNTS OF FLIGHT CREW

Not just a jump rope show, the amazing Flight Crew uses high energy stunts, LED ropes and dynamic choreography to present a show that leaps from the stage into your memories! Jumpin' FUN for the entire Family!



THE COMEDY OF MARYELLEN HOOPER

A physical, story-teller, Maryellen's act is an ever-evolving story about her life as a woman, wife and mother. A veteran in the world of stand-up, Maryellen Hooper's comedy has taken her from clubs and colleges to theaters and television.



THE COMEDY & HYPNOSIS OF RICKY KALMON

For over two decades, Kalmon's hypnosis show has amazed audience around the world. Kalmon is the star of SNAP! that airs on the Disney Channel. An exciting and high-energy experience, Ricky's live shows are the Only Comedy Show Where the Audience Becomes the Stars.



THE MUSIC & COMEDY OF THE BEVERLY BELLES

The Beverly Belles are America's premier vintage singing trio - a sassier version of The Andrews Sisters! They take the music of the 1930s, 40s, and 50s, Disney films and Today's Top 40 and put their own entertaining spin on it with fun choreography and charming banter. The lovely ladies have performed all over the USA to standing ovations at every turn. Their musicianship, classic look and comedy make The Beverly Belles absolutely unforgettable!

GUEST PRESENTERS THIS WEEK

CAPTAIN KENNETH PUCKETT

Retired Master Mariner-US Navy-US Army and Senior Panama Canal Pilot and Port Captain; Captain Puckett, adjunct Professor of Marine Science was selected by the Panama Canal Commission to join the elite corps of Panama Canal Pilots. For 16 years he worked as a Senior Panama Canal Pilot and Canal Port Captain during which time he safely piloted over 1440 merchant and military vessels through the Panama Canal.

CHEF ROBERTO RIVERA

Roberto Rivera is Chef at Cinderella's Royal Table, Magic Kingdom. Curiosity around his grandmothers cooking started his culinary career; her food was so delicious compared to everyone else's so he started asking her questions about how she prepared dishes. He majored in Restaurant Management in College, and once graduated he went on to a full Culinary Arts program in Orlando FL.

BALLROOM DANCERS, WILLEM AND NATALIA

A native of Moscow, Natalia studied ballet and classical piano as a child and pursued her love of the arts at the Russian Academy of Theatre Arts, where she received an MFA with honors. After graduation, she danced professionally in Moscow before touring the world as a performer. Willem de Vries has been a professional Ballroom & Latin dancer, instructor, competitor, and choreographer for 17 years. During that time he has competed and taught around the world and won various regional, national, and international awards and titles.

GEORGE SCRIBNER

George Scribner is a Fine Artist, Animator and Filmmaker. He was born and raised in Panama City, Panama and has been with The Walt Disney Company for more than thirty-five years. In 1983 he became a Character Animator at Walt Disney Feature Animation and in 1988 directed Oliver and Company, a full-length animated feature. Commissioned by the Government of Panama to record the expansion of the Panama Canal, George spent more than nine years creating large scale oil paintings documenting the construction of this massive engineering marvel.

ADULT ACTIVITY HIGHLIGHTS



1820 SOCIETY (GUESTS 18-20 YEARS ONLY)

1820 Society is an exclusive option for young adult Guests. Come meet fellow passengers and learn about the excellent activities that the Disney Wonder offers to create the perfect cruise experience.

ART OF THE THEME SHOW TOUR

Join us for a guided tour highlighting the design, Imagineering and artistry of the ship. This tour is reserved for Guests 18 and over. Please book at Guest Services, Deck 3, Midship.

CRUISIN' SOLO GATHERING

Single, single parent or just traveling alone? Join your Cruise Staff for an informal gathering.



Senses Spa & Salon has a variety of seminars and fitness classes available throughout the cruise. Pamper yourself with therapeutic spa treatments of heat, steam, rain and water in luxurious and tranquil private rooms. Deck 9, Forward.

BEVERAGE SEMINARS

Your Beverage team has a host of tastings and seminars to entertain and educate you. Stop by D Lounge, Deck 3, Aft to pre-book these experiences (nominal fee applies).

Mixology - Stem to Stern Wine Tasting - Martini Tasting - Champagne Tasting
Beer Tasting - Cognac Tasting - Whisky Tasting
Tequila & Margarita Tasting - Chocolate & Liquor Tasting - Rum Tasting

PANAMA CANAL INFORMATION

Stretching approximately 48 miles long, the Panama Canal is an international water passage between North and South America that connects the Atlantic to the Pacific. The canal passes through the Isthmus of Panama, allowing sea voyagers to save precious travel time and resources. A masterful feat of engineering, this legendary waterway is revered as one of the 7 wonders of the modern world. However, the "Path between the Seas" is not a natural wonder, it's a man-made triumph involving a series of lifts and lock gates made to raise ships and transport them through the waterway.

As you travel through the Panama Canal, have your camera at the ready! Bordered by lush, tropical rainforests, the canal is a spectacular sight full of photographic potential.

For those who can't make it out on deck, Bridge camera and Panama Canal narration is available on Channel 27-1.

FACTS ABOUT THE ORIGINAL PANAMA CANAL

- The official opening of the Panama Canal was August 15, 1914.
- The 50-mile long passage created an important shortcut for ships traveling between New York and California trimming nearly 8,000 miles from their voyage.
- Between 12,000 & 15,000 ships cross the Panama Canal every year.
- Every ship that transits the canal must pay a toll based on its size and cargo volume. Tolls for large ships can be as high as \$450,000.
- The lowest toll ever paid was \$0.36 cents by Richard Haliburton who swam the canal.
- A system of locks raises each ship 85 feet above sea level.

FACTS ABOUT THE NEW PANAMA CANAL

- The Panama Canal expansion started in 2007 and was completed in June 2016.
- The estimated cost of building the new locks was \$5.25 billion dollars.
- The allowed length of ships increased from 965 feet to 1200 feet. The allowed width of ships increased from 106 feet to 160 feet.
- The new lock chambers are 180 feet wide, 1,400 feet long and 60 feet deep.
- The new lock chambers hold 65% more water than the original locks and use 7% less water per transit.
- The total annual tonnage traveling through the Panama Canal will increase from 275 million tons to 600 million tons.
- The Disney Wonder was the first passenger ship to navigate entirely through the new locks - Aqua Clara and Cocoli.

FUN FOR ALL AGES HIGHLIGHTS



BOAT BUILDING BASH SIGN-UPS

Is your team up to the challenge to build your own boat? It will take imagination and creativity.

CASTAWAY CAY 5K REGISTRATION (10+)

Sign up today for the Castaway Cay 5K! Please visit the Port Adventures Desk or the Guest Services Desk to register at anytime prior to our arrival at Disney Castaway Cay. Please note that runners must be 10 years of age or older to participate.

FAMILY TALENT SHOW SIGN UP

Pre-register at the Port Adventures Desk, Deck 3, Midship Let your family take center stage and strut their stuff. Everyone has a talent, it's time to show off yours! Pre-register at the Port Adventures Desk.

MICKEY'S SAIL-A-WAVE PARTY!

Mickey's Sail-a-Wave Deck Party is a high energy, Disney Bounding, countdown celebration happening atop the Disney Wonder! Wave goodbye to work & school, and hello to vacation! Mickey and the gang throw a Sail-a-Wave celebration you won't forget!!

SO YOU THINK YOU KNOW YOUR FAMILY?

This fun-filled family game show is always full of surprises. Find out how well you know, or don't know your family!

WHO WANTS TO BE A MOUSEKETEER?

Your chance to get into the "hot seat" and win limited edition prizes. Or, play along as part of our live studio audience.

GOOD MORNING DISNEY WONDER

Get your day started with your Cruise Director and Special Guest, to find out what exciting events are happening around the ship each day! On our Days at Sea, come sit in the audience and be a part of the live broadcast in D Lounge, Deck 4, Midship or watch live and on our Port Days on channel 28-3.

PHOTO CHALLENGES

Stop by the Port Adventures Desk on selected Days at Sea to pick up that days photo challenge. Complete at your own leisure but please return the form before 10:00 pm that night. The winner will be announced on the Good Morning Disney Wonder show the following Day at Sea.

YOUTH ACTIVITIES INFORMATION



0 - 3
Years Old



3 - 12
Years Old



3 - 12
Years Old



11 - 14
Years Old



14 - 17
Years Old

Dine & Play

As a convenience for families dining at 8:15 pm, our Youth Activities counselors will be available at the entrance of each restaurant to bring registered children to join the fun in the Youth Activities areas at the following times:

- 9:15 pm at the entrance of Triton's,
- 9:30 pm at the entrance of Tiana's Place and Animator's Palate.

Pre-School Fun

Disney's Oceaneer Club is reserved for only those between 3-5 years of age. This is a time for them to become acclimated to Disney's Oceaneer Club, make new friends and join in on a lot of fun-filled programs and activities. Please note after Pre-School Fun has concluded, Disney's Oceaneer Club will be open for Secured Programming for ages 3-12.

Youth Activities Open House

Open House is an opportunity for all to come and participate in a variety of exciting activities and free time in the Oceaneer Club, Oceaneer Lab, Edge and Vibe throughout the cruise. During these times secured programming will still be offered in the other venue for those looking to check their children into care.

Youth Activities Venue Tour

Come and take a tour of Disney's Oceaneer Club and Disney's Oceaneer Lab. This informative tour will give you the information you need to know about our exciting spaces and activities offered for children ages 3-12. Please see your Personal Navigator or the Navigator App for times.

BUENA VISTA THEATRE

Deck 5, Aft

FEATURE MOVIES THIS VOYAGE

SUNDAY - PORT CANAVERAL, FLORIDA

1:45 pm	PG	The Nutcracker and the Four Realms	Open Captioning
5:30 pm	PG	Christopher Robin	
8:00 pm	PG	Christopher Robin	
10:15 pm	PG	Ralph Breaks the Internet	3D

MONDAY - DISNEY CASTAWAY CAY

8:30 am	PG	Christopher Robin	
10:45 am	PG	Ralph Breaks the Internet	Open Captioning
1:45 pm	PG-13	Solo: A Star Wars Story	
5:15 pm	PG	Mary Poppins Returns	
8:00 pm	PG	Mary Poppins Returns	
10:45 pm	PG	Movie Classic: Pete's Dragon (1977)	

TUESDAY - DAY AT SEA

10:00 am	PG	The Incredibles 2	3D
2:30 pm	PG	Mary Poppins Returns	
5:30 pm	PG	The Nutcracker and the Four Realms	
8:00 pm	PG	The Nutcracker and the Four Realms	
10:15 pm	PG	Mary Poppins Returns	Open Captioning

WEDNESDAY - GEORGE TOWN, GRAND CAYMAN

1:00 pm	PG-13	Avengers: Infinity War	
5:30 pm	PG	The Incredibles 2	
8:00 pm	PG	The Incredibles 2	
10:30 pm	PG	Movie Classic: Saving Mr. Banks	

THURSDAY - DAY AT SEA

12:30 pm	PG	Christopher Robin	
2:45 pm	PG	Movie Classic: The Parent Trap (1961)	
5:30 pm	PG	Ralph Breaks the Internet	
8:00 pm	PG	Ralph Breaks the Internet	
10:30 pm	PG	The Nutcracker and the Four Realms	3D

FRIDAY - CARTAGENA, COLOMBIA

8:00 am	PG	The Incredibles 2	Open Captioning
12:15 pm	PG-13	Thor: Ragnarok	
2:45 pm	PG	Ralph Breaks the Internet	
5:15 pm	PG	Mary Poppins Returns	
8:00 pm	PG	Mary Poppins Returns	
10:30 pm	G	Movie Classic: 20,000 Leagues Under the Sea	

SATURDAY - PANAMA CANAL

8:30 am	PG	Ralph Breaks the Internet	
11:00 am	PG-13	Black Panther	
2:45 pm	PG	The Incredibles 2	
5:30 pm	PG	Christopher Robin	
8:00 pm	PG	Christopher Robin	
10:30 pm	G	Bedknobs and Broomsticks (Movie Classic)	

Subject to change.

COAST TO COAST CHARACTER CAMP OUT



Pick up your tickets today to reserve your place for the Youth Activities Coast To Coast Campout. This overnight event will be happening on Monday, March 4th at 10:00 pm and will be an opportunity to participate in activities throughout the evening and have a bedtime story read to your child in Disney's Oceaneer Club by a very special visitor. These tickets are on a first come first serve basis, so book your tickets now at the Port Adventures Desk, Deck 3 Midship to not miss out on this magical event. (Please note that all children ages 3-12 are able to participate in the event activities 10:00 pm - 11:30 pm in the Oceaneer Club. Tickets are only required for children ages 5-12 who wish to participate in the overnight sleepover.)

MORE TO ENJOY ONBOARD

NEW SPRING 2020 ITINERARIES

New Spring 2020 Itineraries announced! Experience sailings to the Caribbean, the Bahamas, Mexico, and Hawaii with your family! And for the very first time, sail from New Orleans to the Caribbean or Bahamas on Disney Wonder. Visit Disney Vacation Planning, Deck 4, Midship for more information. Disney Vacation Planning tends to get busy on the last day of sailing. Don't miss the opportunity to plan your next Disney vacation.

DISNEY VACATION CLUB® GROUP PREVIEW

Join us for our interactive group presentation to learn about taking magical vacations year after year! For more information, please see a Disney Vacation Club Cast Member on Deck 4, Midship, or call 7-2805 from your stateroom phone.

PORT SHOPPING INFORMATION

Come and meet Richard, your Port Shopping Guide, at the Port Shopping Desk, Deck 3, Midship from 7:00 pm - 8:30 pm for a complimentary charm. Don't miss the Port Shopping Talk on Day at Sea 1 in the Buena Vista Theatre, Deck 5, Aft, at 1:00 pm for all of your Port Shopping information and to enter a raffle for a chance to win a Diamond Pendant. Tune into Channel 24-6 all cruise long for more Port Shopping information.

Connect@Sea

FREE INTERNET EMBARKATION DAY SPECIAL

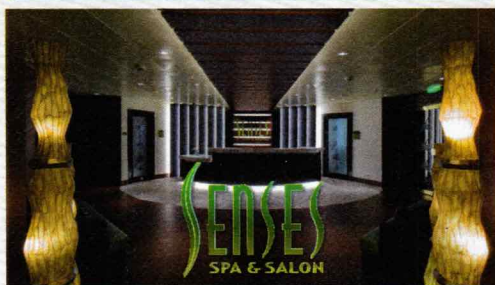
Sign up for a free 50 MB Internet package today and enjoy it throughout the cruise! This offer is only available from noon to midnight on the day your cruise begins. On your wireless device, simply find the "DCL-Guest" Wi-Fi Network, go to www.dclguest.com to create an account, and get your free 50 MB of data to start sharing your memories even before you leave port! If you have any questions, ask our Connect@Sea Expert located at Deck 3, Aft. No purchase necessary. The free 50 MB package can only be used for the duration of the cruise. Only one free package per stateroom, but everyone can share it. Unused data from a package will not be reimbursed and it is non-transferable between voyages or ships.

RELIGIOUS SERVICES

Groups who need a location to practice their faith may contact Guest Services for availability information.



SENSES SPA & SALON



DECK 9, FORWARD Extension 7-1465

RAINFOREST

Come enjoy our serenity lounge, with heated chairs, dry sauna, aromatherapy steam rooms and rainfall, misting showers. \$249 - Single Cruise Pass - \$345 - Couple's Cruise Pass

REJUVENATION SPA CONSULTATIONS

Ready to enhance your natural beauty? Book your free Facial Rejuvenation consultation with our Rejuvenation Doctor at the Senses Spa.

ONBOARD ACUPUNCTURE

Acupuncture is a safe and effective medicine that allows your body to heal itself, and is effective for various health conditions. See your onboard Acupuncturist for your free consultation.

IONITHERMIE

Lose between 1 - 8 inches. Speed up your metabolism. Firm muscle tone. Improve appearance of cellulite. \$155/1 session or \$299/3 sessions.

BIOTEC FACIALS

Our revolutionary facials address skin tone, blemishes and fine lines to transform the texture of the skin. The ultrasonic peel, massage and light therapy deliver a complexion that has never been smoother.

AN 18% AUTO GRATUITY IS ADDED TO ALL SENSES SPA SERVICES.

MERCHANDISE SHOPPING



DECK 4, FORWARD

EFFY JEWELRY SPECIAL OFFER

Known for their bold designs, Effy jewelry is meticulously crafted with every design overseen by its founder, who plays a key role in the journey of each piece. A stylish collection of Effy jewelry pieces is now available onboard and are waiting for you to discover them in White Caps. Deck 4, Forward

2019 DISNEY CRUISE LINE MERCHANDISE

Step into Mickey's Mainsail today and commemorate your Disney Cruise with a wide selection of 2019 Disney Cruise Line merchandise. From casual apparel to drinkware, you are sure to find a special souvenir for the whole family.

PANAMA MERCHANDISE

Commemorate this Panama Canal voyage with a specially designed Tervis, magnet, ornament, pin and hat for everyone in the family! Available at White Caps on Deck 4, Forward.

DOONEY & BOURKE: CHARACTER EXPERIENCE

Dooney & Bourke bags are reborn in this new Disney Cruise Line Character Experience collection. With enhanced materials and more intricate designs, these new bags are sure to be an inspired addition to your collection. White Caps, Deck 4, Forward.

DUE TO PORT REGULATIONS, WHEN THE SHIP IS DOCKED, THE STORES WILL REMAIN CLOSED.

SHUTTERS PHOTO GALLERY



DECK 4, AFT

WELCOME ABOARD RAFFLE

View your embarkation photos in Shutters, Deck 4, Aft and enter our raffle for a chance to win a 10 Digital Photos valued at \$149.95. Winner must be present at the 10:00 pm drawing in Shutters, Deck 4, Aft. *Terms and conditions apply. Visit Shutters on Deck 4, Aft for more information.

GET THE PICTURE!

Take home all your stateroom photos from this cruise on a USB! Terms and conditions apply. Visit Shutters on Deck 4, Aft and ask your friendly Shutters staff for more information. Get The Picture! Hurry! Order yours now.

PHOTO BOOK

Turn your magical vacation memories into an impressive keepsake with a personalized PhotoBook. Order by 9:30 pm on the final night of the cruise.

PRIVATE STUDIO PORTRAITURE

Book our exclusive and contemporary Private Studio experience today and capture these memories. No obligation to purchase. Black and White only.

PHOTOS ARE AVAILABLE FOR VIEWING ON OUR INTERACTIVE PHOTO KIOSKS APPROXIMATELY FIVE HOURS AFTER BEING TAKEN AND ARE ONLY AVAILABLE FOR PURCHASE DURING THIS CRUISE.

IMPORTANT INFORMATION

Security Notice/Unaccompanied Minor Ashore
All Guests (including children) who wish to disembark or embark the ship are required to present their Key to the World card at the gangway. A photo ID is also required for those Guests who are 18 years of age or older. Guests under the age of 18 are required to have a Parent, Guardian or other responsible adult complete the "Traveling with Minors" section of "My Online Check-In" prior to sailing or sign an authorization form at the Guest Services Desk if they wish to go ashore unaccompanied or with any adult from another stateroom.

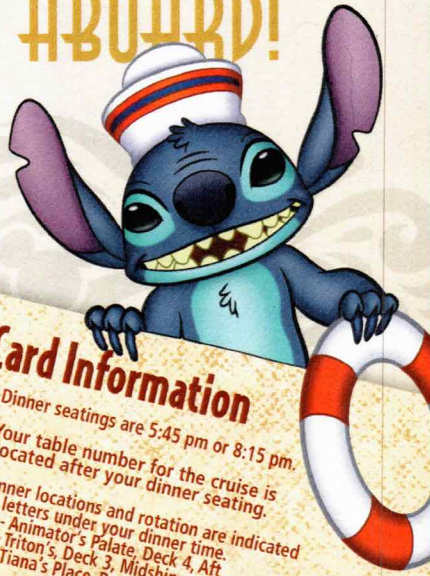
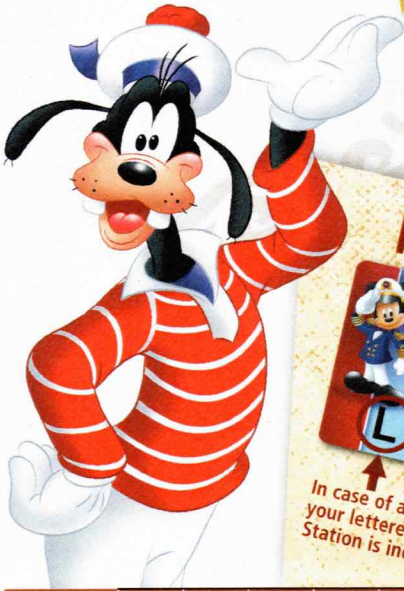
Inclement Weather
For the safety of all Guests, outdoor events may be changed due to unforeseen weather conditions.
Insect Repellent Advisory
The Centers for Disease Control and Prevention recommends wearing long-sleeved shirts and pants along with insect repellent to protect against mosquito bites and related illnesses when going ashore. Complimentary insect repellent is available on the pier as you exit the ship. Insect repellent is also available for purchase in White Caps. When using both sunscreen and insect repellent, use sunscreen first and apply insect repellent on top of sunscreen.

Corridor Quiet Hours
As a courtesy to all our Guests, please recognize quiet hallway hours from 10:00 pm til 8:00 am.
No Reserved Seats Policy
As a courtesy to all our Guests, we kindly advise that the saving of seats is not permitted in the Walt Disney Theatre, and the saving of the sun loungers is not permitted on Deck 9 and 10. Items left unattended will be returned to lost and found at Guest Services, Deck 3 Midship.
Cold and Flu Reminder
Please wash hands frequently and thoroughly, particularly before meals. Contact the Health Center by dialing 7-1927, should anyone in your party become ill.

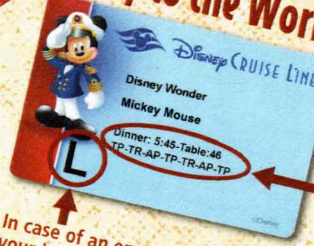
Smoking
For the comfort of our Guests, the following areas are designated as smoking areas:
*Deck 9, Forward, Port Side
*Deck 4, Starboard side from 6:00 pm to 6:00 am only (all of Deck 4 is non-smoking from 6:00 am to 6:00 pm)
Smoking is prohibited inside all Guest staterooms and on stateroom verandahs. Guests found smoking in their staterooms or on their verandahs will be charged a \$250 stateroom recovery fee. Electronic cigarettes may only be used in designated smoking areas.

Walt Disney Theatre
Theatrical performances may use artificial fog, strobe lights, pyrotechnics and other special effects. For the safety of our performers, and the comfort of those around you, the use of any photography, video recording device or any electronic equipment is prohibited.
Verandah Safety
Please do not leave any personal items on your verandah that may be blown overboard or present a fire hazard if left unattended. Do not throw anything over the ship's side. Guests should not sit, lean or climb on the railing or leave children unattended on the verandah. Do not open the verandah and stateroom doors simultaneously as this may create a wind effect and could cause the doors to slam unexpectedly.

WELCOME ABOARD!



Key to the World Card Information



In case of an emergency, your lettered Assembly Station is indicated here.

- ♥ Dinner seatings are 5:45 pm or 8:15 pm.
- ♥ Your table number for the cruise is located after your dinner seating.
- ♥ Dinner locations and rotation are indicated by letters under your dinner time.
 AP - Animator's Palate, Deck 4, Aft
 TR - Triton's, Deck 3, Midship
 TP - Tiana's Place, Deck 3, Aft



FAMILY DECK PARTY

Mickey's Sail-a-Wave Deck Party is a high energy, Disney Bounding, countdown celebration happening atop the Disney Wonder! Wave goodbye to work & school, and hello to vacation! Mickey and the gang throw a Sail-a-Wave celebration you won't forget!!
Deck 9 Stage, 4:30 pm

Bay Breeze (Alcoholic)
 Bora Shake (Non-Alcoholic)
DRINK OF THE DAY

Afternoon	1:45	2:00	2:15	2:30	2:45	3:00	3:15	3:30	3:45	4:00	4:15	4:30	4:45	5:00	5:15	5:30	5:45	6:00	6:15	6:30	6:45	
FUNNEL VISION	The Hunchback of Notre Dame (G) Open Captioning Funnel Vision												Mickey's Sail-A-Wave Party! Deck 9 Stage				The Princess and the Frog (G) Open Captioning Funnel Vision					
BUENA VISTA THEATRE	The Nutcracker and the Four Realms (PG) Open Captioning Duration: 1 Hour 39 Minutes																		Christopher Robin (PG) Duration: 1 Hour 44 Minutes			
CHARACTERS	Join the Lion Guard Oceaneer Club														Mickey Mouse DK4 Mid (S)				Minnie Lobby Atrium (P)			
FUN FOR ALL AGES	Join the Lion Guard Oceaneer Club														Disney Classics with The Belle Adventure Promenade Lounge				THE GREAT DUBOIS Walt Disney Theatre			
ADULTS	Chilled Sounds with Rob Lamont Cove Cafe		Chilled Sounds with Rob Lamont Cove Cafe												Cruisin' Solo Gathering Cove Cafe							
VIBE 14-17 YEARS OLD	Youth Activities Open House												Youth Activities Open House								Open for Teens	
EDGE 11-14 YEARS OLD	Youth Activities Open House												Youth Activities Open House								Open for Tweens	
OCEANEER LAB 3-12 YEARS OLD	Youth Activities Open House & Registration		Youth Activities Tour		Open House								Youth Activities Open House								Ice Breakers	
OCEANEER CLUB 3-12 YEARS OLD	Open House		Join the Lion Guard		Youth Activities Open House & Registration								Youth Activities Open House								Pre-School Fun (3-5 Years Old)	

Mandatory Guest Assembly Drill 4:00 pm
 (All Guests must attend)
 All ship services will be suspended during this time.

Refer to the posted drill instructions on the back of your stateroom door prior to heading to Deck 4. Please bring your Key to the World Card.

You will not need your life jacket for the Guest Assembly Drill.



Your Assembly Station is indicated on your Key To The World card.



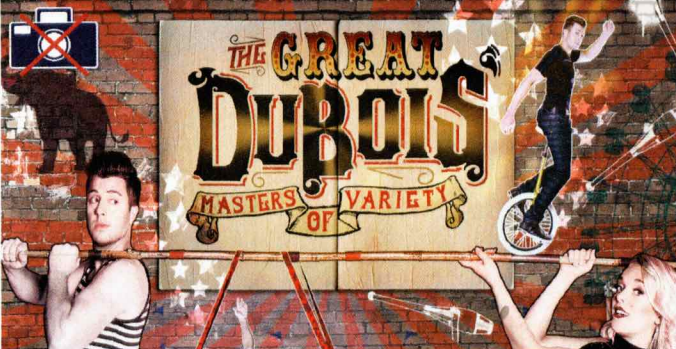
Evening	7:00	7:15	7:30	7:45	8:00	8:15	8:30	8:45	9:00	9:15	9:30	9:45	10:00	10:15	10:30	10:45	11:00	11:15	11:30	11:45	12:00	
FUNNEL VISION			Fantasia (G) Open Captioning Funnel Vision										Enchanted (PG) Funnel Vision									
BUENA VISTA THEATRE					Christopher Robin (PG) Duration: 1 Hour 44 Minutes												Ralph Breaks the Internet (PG)				Duration: 1 Hour 54 Minutes	
CHARACTERS									Mickey DK4 Mid (S)		Pluto Lobby Atrium (P)		Minnie DK4 Mid (S)						Donald Preludes		Daisy Preludes	
FUN FOR ALL AGES			D Lounge		THE GREAT DUBOIS Walt Disney Theatre				Family Dance Party D Lounge		Disney Trivia D Lounge				D Lounge							
ADULTS	Classic Broadway with Sean Flowers Cadillac Lounge		Music Through the Decades with Aaron Lotzow Cadillac Lounge		91st Annual Academy Awards Crown & Fin Pub		Piano Melodies Cadillac Lounge		The Magic & Illusions of MIKE SUPER Azure		Ice Breakers Azure		The Magic & Illusions of MIKE SUPER Azure		Cruise Staff DJ Azure		Late Night Piano with Aaron Lotzow Cadillac Lounge					
VIBE 14-17 YEARS OLD			Cards Tournament				Wii Challenge		Ice Breakers		Profiles		The Download		Heroes and Villains							
EDGE 11-14 YEARS OLD			GAGA Ball				Ice Breakers		Profiles		Taking it to The Edge				Heroes and Villains							
OCEANEER LAB 3-12 YEARS OLD			Meet Your Counselors				Oceaneer Rangers		Stitch's Space Goo				Human Bingo				GAGA Ball					
OCEANEER CLUB 3-12 YEARS OLD			Welcome Party				Space Ranger Training		Once Upon a Time		Game Challenge				MARVEL Super Hero Academy Avengers Assemble							

Fold along the dotted lines and take me with you so you don't miss any of the fun!

ASL - AMERICAN SIGN LANGUAGE INTERPRETED

YOUTH ACTIVITIES OPEN HOUSE
 A non-secured program with activities for families, adults and children to enjoy together.

SUNDAY, FEBRUARY 24, 2019 - PORT CANAVERAL, FLORIDA



WALT DISNEY THEATRE

Deck 4, Forward
6:15 pm & 8:30 pm

As a courtesy to all Guests, we kindly advise that the saving of seats is **not** permitted in the Walt Disney Theatre.

Assistance is available at the entrance to the Walt Disney Theatre 30 minutes prior to show time.

Character Experience Reservations

Port Adventures Desk, Deck 3, Midship - 12:00 pm - 2:00 pm

The following appearances require a reservation. Space is limited. For Guests who did not book online, a limited number of reservations are available for:

- Princess Gathering
- Frozen Gathering
- VIP Character Breakfast

Character Appearances

JOIN THE LION GUARD
Disney's Oceaneer Club -
2:00 pm

PLUTO
Lobby Atrium (P) - 9:45 pm

MICKEY'S SAIL-A-WAVE PARTY!
Deck 9 Stage - 4:30 pm

DAISY DUCK
Preludes - 10:00 pm

MICKEY MOUSE
DK4 Mid (S)
5:15 pm & 9:30 pm



MINNIE MOUSE
Lobby Atrium (P) - 5:30 pm
DK4 Mid (S) - 10:00 pm

GOOFY
Preludes - 5:30 pm

DONALD DUCK
Preludes - 9:30 pm

(S) Starboard Side - (P) Port Side

For details of daily Disney character appearances, refer to the character line on your Navigator Grid, or the digital character board in the Lobby Atrium. Lines close 15 minutes after advertised start time.

SHIP DIRECTORY

YOUTH ACTIVITIES

DISNEY'S OCEANEER CLUB	DECK 5, MID	12:00 PM - 3:30 PM 4:30 PM - 12:00 AM
DISNEY'S OCEANEER LAB	DECK 5, MID	12:00 PM - 3:30 PM 4:30 PM - 12:00 AM
EDGE	DECK 9, MID	12:00 PM - 3:30 PM 4:30 PM - 12:00 AM
IT'S A SMALL WORLD NURSERY	DECK 5, AFT	12:30 PM - 3:30 PM 5:30 PM - 11:00 PM
VIBE	DECK 10, MID	12:00 PM - 3:30 PM 4:30 PM - 12:00 AM

POOLS

Children under 12 years of age must have adult supervision in all pools.

AQUALAB	DECK 9, AFT	12:00 PM - 3:30 PM 4:30 PM - 6:00 PM
DORY'S REEF	DECK 9, AFT	12:00 PM - 3:30 PM 4:30 PM - 6:00 PM
GOOFY'S POOL	DECK 9, MID	12:00 PM - 3:30 PM 6:00 PM - 10:00 PM
QUIET COVE POOL (18+)	DECK 9, FWD	12:00 PM - 3:30 PM 4:30 PM - 11:00 PM
TWIST N' SPOUT	DECK 9, AFT	12:00 PM - 3:00 PM 4:30 PM - 6:00 PM

Please note, "selfie sticks" are not permitted in any aquatic area. Complimentary pool vests are available for children to use in the pools onboard. They are located on the pool deck.

RECREATION

CHILL SPA	DECK 9, FWD	12:00 PM - 10:00 PM
PORT ADVENTURES DESK	DECK 3, MID	12:00 PM - 3:30 PM 4:30 PM - 8:30 PM
SENSES FITNESS CENTER (18+)	DECK 9, FWD	12:00 PM - 10:00 PM
WIDE WORLD OF SPORTS DECK	DECK 10, FWD	12:00 PM - 3:30 PM 4:30 PM - 12:00 AM

GENERAL INFORMATION

BUENA VISTA THEATRE	DECK 5, AFT	SHOWTIMES
CONNECT@SEA DESK	DECK 3, AFT	1:00 PM - 4:00 PM 7:00 PM - 10:00 PM
DISNEY VACATION CLUB DESK	DECK 4, MID	5:00 PM - 10:00 PM
DISNEY VACATION PLANNING DESK	DECK 4, MID	7:00 PM - 8:30 PM
FUNNEL VISION	DECK 9, MID	SHOWTIMES
GUEST SERVICES	DECK 3, MID	24 HOURS
MEDICAL HEALTH CENTER	DECK 1, FWD	4:30 PM - 7:00 PM
PORT SHOPPING DESK	DECK 3, MID	7:00 PM - 8:30 PM
PRELUDES	DECK 4, FWD	SHOWTIMES
SENSES SPA AND SALON	DECK 9, FWD	12:00 PM - 10:00 PM
SHUTTERS PHOTO GALLERY	DECK 4, AFT	6:00 PM - 10:30 PM
WALT DISNEY THEATRE	DECK 4, FWD	SHOWTIMES

SHOPPING

ART GALLERY	DECK 4, MID	
BIBBIDI BOBBIDI BOUTIQUE	DECK 10, FWD	12:00 PM - 3:00 PM 5:00 PM - 9:00 PM
MICKEY'S MAINSAIL	DECK 4, FWD	6:00 PM - 11:00 PM
QUACKS	DECK 9, MID	
SEA TREASURES	DECK 3, FWD	6:30 PM - 10:00 PM
WHITE CAPS	DECK 4, FWD	6:00 PM - 11:00 PM

EVENING ATTIRE Cruise Casual

DINING & LOUNGES

LUNCH

CABANAS	DECK 9, AFT	12:00 PM - 3:00 PM
DAISY'S DE-LITES	DECK 9, AFT	12:00 PM - 3:30 PM
PINOCCHIO'S PIZZERIA	DECK 9, MID	12:00 PM - 3:30 PM
PETE'S BOILER BITES	DECK 9, AFT	12:00 PM - 3:30 PM
TRITON'S (A-LA CARTE)	DECK 3, MID	11:45 AM - 1:30 PM

DINNER

ANIMATOR'S PALATE	DECK 4, AFT	5:45 PM & 8:15 PM
DAISY'S DE-LITES	DECK 9, AFT	4:30 PM - 6:00 PM
PALO (18+)	DECK 10, AFT	6:00 PM - 8:30 PM
PETE'S BOILER BITES	DECK 9, AFT	4:30 PM - 9:30 PM
PINOCCHIO'S PIZZERIA	DECK 9, MID	4:30 PM - 6:00 PM
TIANA'S PLACE	DECK 3, AFT	5:45 PM & 8:15 PM
TRITON'S	DECK 3, MID	5:45 PM & 8:15 PM

LATE NIGHT SNACKS

CROWN & FIN PUB (18+ AFTER 9:00 PM)	DECK 3, FWD	10:45 PM - 11:45 PM
PINOCCHIO'S PIZZERIA	DECK 9, MID	9:30 PM - 12:00 AM
PROMENADE LOUNGE	DECK 3, AFT	10:45 PM - 11:45 PM

ADDED FEATURES

BEVERAGE STATION	DECK 9, AFT, PORT SIDE	24 HOURS
EYE SCREAM	DECK 9, MID	12:00 PM - 3:30 PM 4:30 PM - 11:00 PM
ROOM SERVICE	DIAL 4330	OPENS AT 1:30 PM

ENTERTAINMENT - LOUNGES - BARS

Adults must be 21 and older to consume alcoholic beverages.

AZURE (18+ AFTER 9:00 PM)	DECK 3, FWD	9:30 PM - 1:00 AM
CADILLAC LOUNGE (18+)	DECK 3, FWD	6:00 PM - 12:30 PM
COVE CAFE (18+)	DECK 9, MID	11:45 AM - 12:00 AM
CROWN & FIN PUB (18+ AFTER 9:00 PM)	DECK 3, FWD	11:45 AM - 12:00 AM
D LOUNGE	DECK 4, MID	SHOWTIMES
PINOCCHIO'S PIZZERIA	DECK 9, MID	11:45 AM - 12:00 AM
PRELUDES	DECK 4, FWD	SHOWTIMES
PROMENADE LOUNGE	DECK 3, AFT	11:45 AM - 12:00 AM
SIGNALS (18+)	DECK 9, FWD	11:45 AM - 10:30 PM
SULLEY'S SIPS	DECK 9, MID	11:45 AM - 5:30 PM

Public Health Advisory: Consuming raw or under-cooked meats, poultry, seafood, shellfish, or eggs may increase your risk for food borne illness, especially if you have certain medical conditions.

Disney CRUISE LINE.
PORT ADVENTURES

Explore and more with our carefully selected Port Adventures. Visit the Port Adventures Desk, Deck 3, Midship to find out more.

IMPORTANT NUMBERS

Fire/Security: 7-3001
Medical EMERGENCY: 7-3000
Health Center: 7-1927