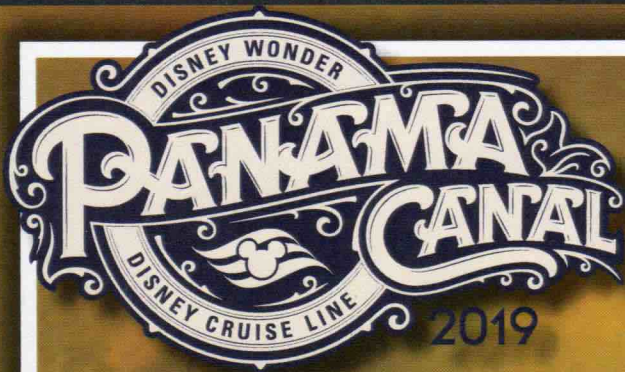
A stylized logo for the Disney Wonder Panama Canal 2019 cruise. The logo is circular with a decorative border. At the top, it says "DISNEY WONDER" in a curved banner. The main text "PANAMA CANAL" is written in a large, ornate, serif font across the center. Below this, there is a smaller circular emblem containing a Mickey Mouse head silhouette. At the bottom of the main circle, it says "DISNEY CRUISE LINE". To the right of the main circle, the year "2019" is written in a simple, sans-serif font. The logo is set against a background of a cable-stayed bridge and a cruise ship on a canal.

DISNEY WONDER
PANAMA CANAL
DISNEY CRUISE LINE
2019

FEBRUARY 24TH 2019 - MARCH 10TH 2019

CAPTAIN Daniele Aschero • STAFF CAPTAIN Grgo Skaramuca • CHIEF ENGINEER Geoff Frankum
HOTEL DIRECTOR Ugo Vaccalluzzo • CRUISE DIRECTOR Natalie Bailey • HUMAN RESOURCES MANAGER Melanie Antonini



SUNDAY, FEBRUARY 24TH, 2019
 PORT CANAVERAL, FLORIDA, USA
 5:00 pm - Depart Dock
 Weather: W Winds, Sunny
 Temperature: 88°F/31°C

MONDAY, FEBRUARY 25TH, 2019
 DISNEY CASTAWAY CAY
 8:30 am - All Ashore
 4:00 pm - All Aboard
 Weather: S Winds, Mostly Cloudy
 Temperature: 79°F/26°C

TUESDAY, FEBRUARY 26TH, 2019
 DAY AT SEA
 12:00 - 23° 07.3'N 083°12.7'W
 Weather: ESE Winds, Sunny
 Temperature: 82°F/28°C

WEDNESDAY, FEBRUARY 27TH, 2019
 GEORGE TOWN, GRAND CAYMAN
 10:30 am - Tendering Begins
 5:30 pm - Last Tender
 Weather: E Winds, Mostly Sunny
 Temperature: 81°F/27°C

THURSDAY, FEBRUARY 28TH, 2019
 DAY AT SEA
 12:00 - 14° 23.7'N 078°24.6'W
 Weather: NE Winds, Sunny
 Temperature: 77°F/25°C

FRIDAY, MARCH 1ST, 2019
 CARTAGENA, COLOMBIA
 7:00 am - All Ashore
 2:30 pm - All Aboard
 Weather: Variable Winds, Sunny
 Temperature: 90°F/32°C

SATURDAY, MARCH 2ND, 2019
 PANAMA CANAL
 Entering Agua Clara Locks - 8:00 am
 Clearing Agua Clara Locks - 10:30 am
 Passing Gamboa - 12:45 pm
 Entering Cocoli Locks: 3:45 pm
 Clearing Cocoli Locks: 7:00 pm

 Weather: Variable Winds,
 Mostly Sunny
 Temperature: 86°F/30°C

TOTAL MILEAGE THIS VOYAGE

PORT	NAUTICAL MILES	AVG. SPEED (KNOTS)
Port Canaveral to Disney Castaway Cay	221	17.0
Disney Castaway Cay to Grand Cayman	797	19.1
Grand Cayman to Cartagena	638	18.1
Cartagena to Panama Canal	279	19.9
Panama Canal Passage	44	N/A
Panama Canal to Puerto Vallarta	1888	19.0
Puerto Vallarta to Cabo San Lucas	295	19.3
Cabo San Lucas to San Diego	739	19.5
TOTAL DISTANCE	4901	

SUNDAY, MARCH 3RD 2019

DAY AT SEA

12:00 - 06°58.0'N 081° 15.3'W

Weather: NE Winds, Partly Cloudy

Temperature: 84°F/29°C

MONDAY, MARCH 4TH 2019

DAY AT SEA

12:00 - 10° 53.0'N 088° 56.1'W

Weather: Variable Winds, Partly Sunny

Temperature: 84°F/29°C

TUESDAY, MARCH 5TH 2019

DAY AT SEA

12:00 - 14° 39.6" N 096° 20.8'W

Weather: NE Winds, Partly Sunny

Temperature: 81°F/27°C

WEDNESDAY, MARCH 6TH 2019

DAY AT SEA

12:00 - 17°51.5"N 102° 43.4'W

Weather: NNE Winds Winds, Sunny

Temperature: 86°F/30°C

THURSDAY, MARCH 7TH 2019

PUERTO VALLARTA, MEXICO

7:00 am - All Ashore

3:30 pm - All Aboard

Weather: Variable Winds, Partly Sunny

Temperature: 82°F/28°C

FRIDAY, MARCH 8TH 2019

CABO SAN LUCAS, MEXICO

7:30 am - Tendering Begins

2:45 pm - Last Tender

Weather: WNW Winds, Partly Cloudy

Temperature: 79°F/26°C

SATURDAY, MARCH 9TH 2019

DAY AT SEA

12:00 - 27° 34.4'N 115° 09.8'W

Weather: NNW Winds, Partly Cloudy

Temperature: 61°F/16°C

SUNDAY, MARCH 10TH 2019

SAN DIEGO, CALIFORNIA, USA

8:30 am - End of Voyage

ENGINES:

5 Diesel Generators (GMT SULZER 16 cylinders)
5 x 15,600 H.P. (5x 11,520kW)
Total Power 78,000 H.P. or 57,600kW

THRUSTERS:

3 Bow Thrusters (each 1,800kW)
Total 5,400kW or 7,236 H.P.
2 Stern Thrusters (each 1,800kW)
Total 3,600kW or 4,824 H.P.

PROPULSION

Two six-bladed fixed pitch propellers, driven
by 2 GE electric motors 19MW each, which is
25,850 H.P. each. Total 51,700 H.P.

FUEL CONSUMPTION

1 Generator consuming approx. 48 tons per day.

WATER CONSUMPTION

With 2 evaporators and 1 reverse osmosis plant
the maximum production is 1200 tons per day.
The daily water consumption is approx. 900
tons per day.

GROSS TONNAGE 84,130

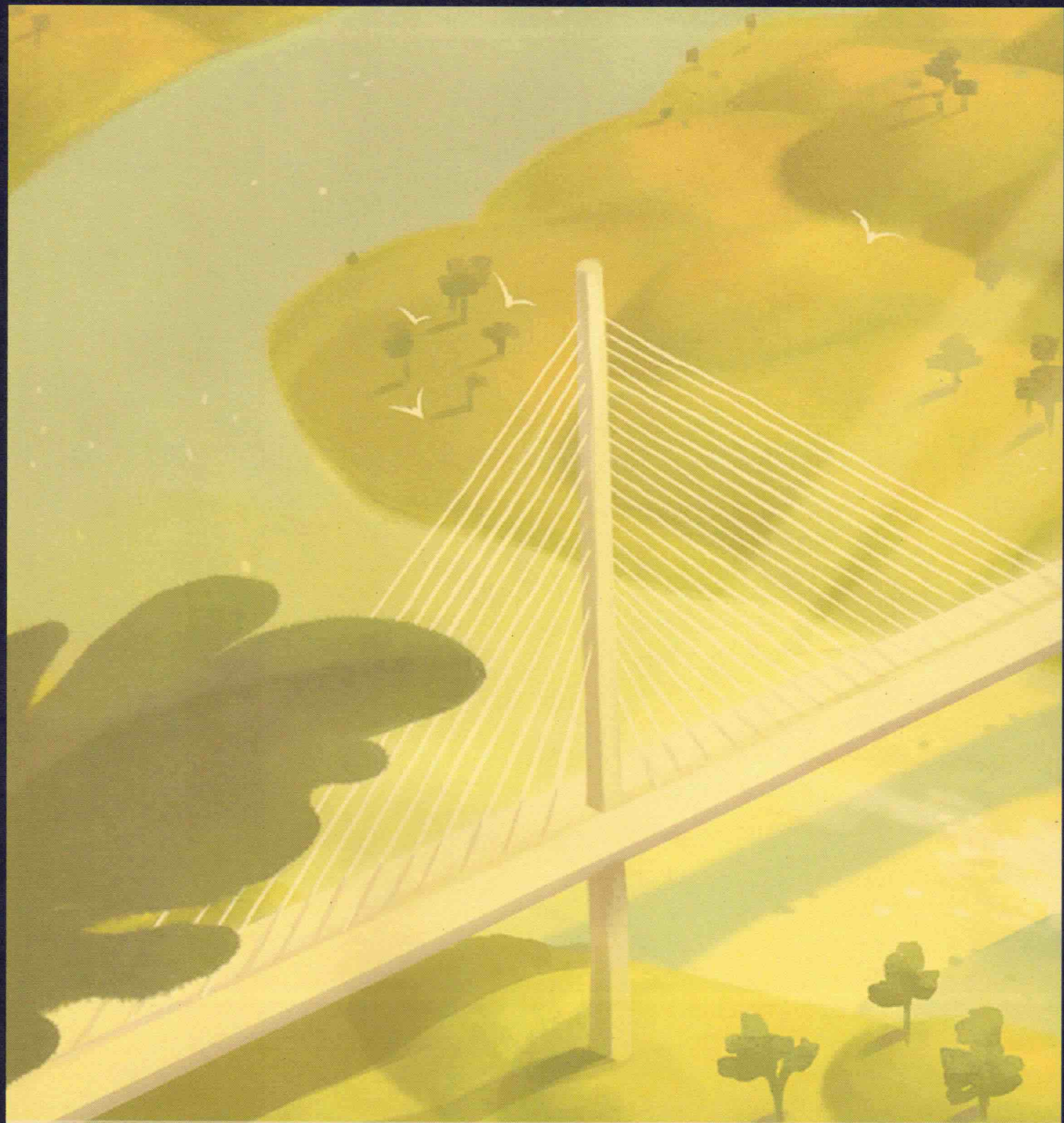
LENGTH 984.58 Feet (300.10m)

WIDTH 105.8 Feet

MAX SPEED 24 kts

CONSUMPTION THIS VOYAGE

Heavy Fuel Oil (HFO): 1805m³
Marine Gas Oil (MGO): 181m³
Fresh Water: 10755m³



On behalf of Captain Daniele Aschero and all of the ship's Officers and Crew,
we thank you for cruising with us over the last 14 nights.

We hope you have all enjoyed the experience as much as we have hosting you.
We would like to wish you all a very safe onward journey from San Diego, and we look
forward to having the opportunity of welcoming you back onboard in the future.

Thank you.