

VOYAGE NAVIGATOR

MONDAY
JANUARY 14, 2019

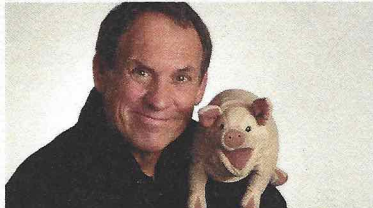
TO

SUNDAY
JANUARY 20, 2019

CRUISE HIGHLIGHTS

MONDAY

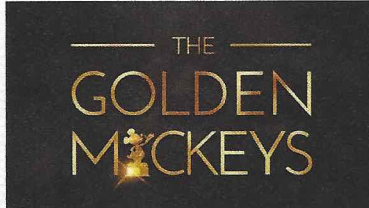
SAN JUAN, PUERTO RICO
Port Departure: 6:00 pm
All Aboard: 5:00 pm
Attire: Cruise Casual



SHOWTIME: TAYLOR MASON
Walt Disney Theatre
6:15 pm & 8:30 pm

TUESDAY

PHILIPSBURG, ST. MAARTEN
All Ashore: 8:30 am
All Aboard: 4:45 pm
Attire: Optional Dress Up



THE GOLDEN MICKEYS
Walt Disney Theatre
6:15 pm & 8:30 pm

WEDNESDAY

ST. JOHN'S, ANTIGUA
All Ashore: 8:30 am
All Aboard: 4:45 pm
Attire: Cruise Casual



MARY POPPINS RETURNS (PG)
Walt Disney Theatre
5:00 pm & 8:15 pm

THURSDAY

CASTRIES, ST. LUCIA
All Ashore: 8:30 am
All Aboard: 4:45 pm
Attire: Cruise Casual



FROZEN, A MUSICAL SPECTACULAR
Walt Disney Theatre
6:00 pm & 8:30 pm

FRIDAY

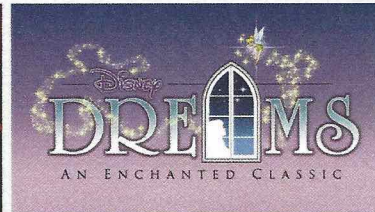
BRIDGETOWN, BARBADOS
All Ashore: 8:30 am
All Aboard: 4:45 pm
Attire: Pirate or Cruise Casual



SHOWTIME: MIKE SUPER
Walt Disney Theatre
6:15 pm & 8:30 pm

SATURDAY

DAY AT SEA
Attire: Cruise Casual



DISNEY DREAMS: AN ENCHANTED CLASSIC
Walt Disney Theatre
6:00 pm & 8:30 pm

Subject to change.

WELCOME ABOARD!

YOUR STATEROOM & LUGGAGE

Staterooms will be ready at 1:30 pm. To allow your Stateroom Host/ess time to prepare your room, please do not remove the blue stanchion straps. Stateroom hosts will deliver luggage throughout the day until 5:30 pm.

STATEROOMS WITH BUNK BEDS

Bunk beds are recessed into the ceiling and will be prepared during evening turndown service by your Stateroom Host/ess.

STATEROOM SAFE

Each stateroom is equipped with a secured storage safe. Instructions for use are located on the safe.

TO CHANGE DINING ASSIGNMENT

Requests for different seating times will be taken today:

- 12:30 pm - 3:30 pm; Book in Azure, Deck 3, Forward or please dial 7-10891 and leave a voicemail.

PALO DINING RESERVATIONS

Reservations are required and will be taken on a first come basis today:

- 12:30 pm - 3:30 pm; Book in Azure, Deck 3, Forward or please dial 7-6843 and leave a voicemail.

Adult Exclusive Dining Opportunity! Guests are invited to make 2 dinner reservations at our adult-exclusive restaurant, Palo. This includes one reservation on embarkation evening and one more on another night of the cruise. Reservations are subject to availability and a specialty dining charge will apply.

DINNER

5:45 pm - First seating 8:15 pm - Second seating

Please check your Key To The World Card for details of your dining rotation, and bring them to your specific dining location. There is no need to wait in line prior to dinner. Dining Rooms open at designated seating times and your table is reserved each night of your cruise.

AP = Animator's Palate, Deck 4, Aft TR = Triton's, Deck 3, Midship TP = Tiana's Place, Deck 3, Aft

DOWNLOAD THE
**DISNEY CRUISE LINE
NAVIGATOR APP**
BEFORE YOU SAIL AWAY

Explore all that's going on aboard your Disney cruise.

Tap the Disney Cruise Line logo to view your Personal Itinerary.



Send messages to your friends and family on the ship.

Your Personal Itinerary includes all activities booked at home and onboard.

Disney CRUISE LINE
PORT ADVENTURES

Create the most memorable experiences during your Disney Cruise Line vacation with Port Adventures! Our Port Adventures are designed for you to see the best our ports have to offer. Stop by the Port Adventures Desk, Deck 3, Midship where our friendly team will be happy to assist you plan your adventure!

There is an adventure for everyone on your Disney Wonder® vacation.

IMPORTANT NUMBERS

Fire/Security: 7-3001

Medical Emergency: 7-3000

Health Center: 7-1927

ADULT ACTIVITY HIGHLIGHTS



1820 SOCIETY (GUESTS 18-20 YEARS ONLY)
1820 Society is an exclusive option for young adult Guests. Come meet fellow passengers and learn about the excellent activities that the Disney Wonder offers to create the perfect cruise experience.



ANYONE CAN COOK
Every Chef has a specialty, and ours is no exception. Get a taste of perfection with each recipe.

ART OF THE THEME SHOW TOUR
Join us for a guided tour highlighting the design, Imagineering and artistry of the ship. This tour is reserved for Guests 18 and over.

CRUISIN' SOLO GATHERING
Single, single parent or just traveling alone? Join your Cruise Staff for an informal gathering.



DISNEY AT SEA WITH D23
Join us for an exciting look at what's new and what's next from all of Disney's wonderful worlds! From theme parks and movies, to vision, music and beyond, you won't want to miss a minute of this new show presented by D23, Disney's official fan club.



MATCH YOUR MATE
It's time to play everyone's favorite couples game show, Match Your Mate!



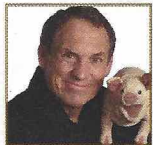
Senses Spa & Salon has a variety of seminars and fitness classes available throughout the cruise. Pamper yourself with therapeutic spa treatments of heat, steam, rain and water in luxurious and tranquil private rooms. Deck 9, Forward.

BEVERAGE SEMINARS

Your Beverage team has a host of tastings and seminars to entertain and educate you. Stop by Azure, Deck 3, Forward to pre-book these experiences (nominal fee applies).

Mixology - Stem to Stern Wine Tasting - Martini Tasting - Champagne Tasting
Beer Tasting - Cognac Tasting - Whisky Tasting
Tequila & Margarita Tasting - Chocolate & Liquor Tasting - Rum Tasting

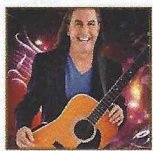
FEATURED VARIETY ACTS THIS VOYAGE



THE COMEDY & VENTRILOQUISM OF TAYLOR MASON
There is truly no other comedy entertainer in the world like TAYLOR MASON. Combining music, ventriloquism, stand-up comedy and audience participation in a solo performance that has no equal, this former Star Search Grand Champion has been making audiences laugh, very hard, for almost three decades.



THE COMEDIAN AND CONTORTIONIST JONATHAN BURNS
Born with the gifts of flexibility, curiosity, and goofiness, Jonathan Burns now uses these unique talents to astonish audiences around the globe. Over the course of his career, Jonathan has appeared on The Late Show with David Letterman, The Jay Leno Show, The Late Late Show with James Corden, been dubbed "Extremely funny" by The New York Times, and was named "Variety Artist of the Year" by Campus Activities Magazine, TWICE!



THE MUSIC & COMEDY OF JOHN CHARLES
With just his guitar, and his incredible singing voice, John Charles amazes his audience with his ability to combine music, comedy and audience interaction. No two shows are ever alike!



THE MAGIC & ILLUSION OF MIKE SUPER
Mike's ever-growing popularity has garnered him many prestigious awards and honors, including being the only magician in history to win a live magic competition on primetime US network television. In addition, his other accomplishments include being named Entertainer of the Year, Best Performing Artist of the Year, Best Novelty Performer of the Year and he was voted America's Favorite Mystifier on NBC's hit TV Show PHENOMENON. Despite all of this, Mike humbly insists, it is the loyalty of his fan base that has been most rewarding.

FUN FOR ALL AGES HIGHLIGHTS



ADVENTURES AWAY
Earn your status as V.I.P. sailors as your Cruise Director, your Disney Pals, and the Cruise Staff officially begin your "Adventures Away".



A PIRATES LIFE FOR ME
Calling all Pirates, we be! If ye have an adventurous spirit or pirate savvy, come spin the "Wheel of Destiny" for a treasure trove of fun be ripe for the takin' in this action packed pirate game show.



CHIP-IT GOLF (12+)
It's par for the course for our Guests 12 and older to compete on our special "greens" in this fun tournament.



DISNEY JUNIOR PIRATE & PRINCESS DANCE PARTY
Calling all Pirates and Princesses! Come join us for a family dance party featuring music and fun activities from Jake & the Neverland Pirates and Sofia the First. Whether you favor tiaras or treasure chests, there's something for you at our Disney Junior Pirate & Princess Dance Party!



DISNEY VACATION CLUB GROUP PREVIEW
Join us for our interactive group presentation to learn about taking magical vacations year after year! For more information please see a Disney Vacation Club Cast Member on Deck 4, Midship, or call 7-2805 from your stateroom phone.



FAMILY SUPERSTAR KARAOKE
Join your Cruise Staff and sing along to your favorite song, fun for everyone.

GAME SHOW: THE FEUD
"Survey Says" you'll have a fantastic time with our version of a classic game

GAME SHOW: THE WHEEL
A special version of this popular TV game show.



JACK-JACK'S INCREDIBLE DIAPER DASH
Calling all baby cruisers! It's time to take to the mat to see who's the fastest crawler of the seven seas! Register your baby 15 minutes prior to the big race.



JACKPOT BINGO
CASH prizes and raffle prizes to be won in our family friendly Bingo sessions with your Cruise Staff. Those under the age of 18 must be accompanied by an adult to play!



MICKEY MANIA
Join us for the ultimate test of your Disney knowledge as we play our live, interactive game show, that's "insania!"



PIRATES IN THE CARIBBEAN DECK PARTY
Yer Disney Friends are all set for a swashbucklin' good time! It's a Pirate Celebration, me hearties! Hoist yourself to Deck 9 to enjoy a rowdy buccaneer bash we call Pirates IN the Caribbean Deck Party.



SALUDOS AMIGOS FIESTA
Come see what Donald and his friends are up to this time. Bring the family out to this interactive dance party featuring fun Latin music! Your family will learn to salsa, merengue and just have a Latin good time!



SO YOU THINK YOU KNOW YOUR FAMILY?
This fun-filled family game show is always full of surprises. Find out how well you know, or don't know your family!



WAKE UP WITH DISNEY JUNIOR
What happens when you experience unlimited fun with your favorite Disney Junior shows? You get an exciting dance party designed especially for preschoolers ages seven and under.



WHO WANTS TO BE A MOUSEKETEER?
Your chance to get into the "hot seat" and win limited edition prizes. Or, play along as part of our live studio audience.



YOUTH ACTIVITIES INFO & HIGHLIGHTS



Dine & Play

As a convenience for families dining at 8:15 pm, our Youth Activities counselors will be available at the entrance of each restaurant to bring registered children to join the fun in the Youth Activities areas at the following times:

9:15 pm at the entrance of Triton's,

9:30 pm at the entrance of Tiana's Place and Animator's Palate.

Pre-School Fun

Disney's Oceaneer Club is reserved for only those between 3-5 years of age. This is a time for them to become acclimated to Disney's Oceaneer Club, make new friends and join in on a lot of fun-filled programs and activities. Please note after Pre-School Fun has concluded, Disney's Oceaneer Club will be open for Secured Programming for ages 3-12.

Youth Activities Open House

Open House is an opportunity for all to come and participate in a variety of exciting activities and free time in the Oceaneer Club, Oceaneer Lab, Edge and Vibe throughout the cruise. During these times secured programming will still be offered in the other venue for those looking to check their children into care.

Youth Activities Venue Tour

Come and take a tour of Disney's Oceaneer Club and Disney's Oceaneer Lab. This informative tour will give you the information you need to know about our exciting spaces and activities offered for children ages 3-12. Please see your Personal Navigator or the Navigator App for times.



3 - 12 years old

JOIN THE LION GUARD

Harness your inner animal and find out if you have what it takes to join the Lion Guard!

MILES' COSMIC EXPLORER ADVENTURES

Miles needs your help! Gadfly has stolen his tech, and it's up to you to solve clues and puzzles in order to return the missing items back to Miles.

SOFIA THE FIRST - MAGICAL STORYTELLING

You're invited to take part in Sorcery 101 at the Royal Prep Academy, where you'll learn a few spells and help retell one of Sofia's many magical adventures.



3 - 12 years old

ANYONE CAN COOK: COOKIES

From our galley to yours. Join our chefs as they show you how to prepare delicious cookies.

LAVA FLOW

Build your own volcano and watch it erupt as you learn about the physics of volcanoes.

PISTON CUP CHALLENGE

It's Dinoco time and you're part of the pit crew! Design your own race car and see if you've got what it takes to end up in the winner's circle!



11 - 14 years old

HEROES AND VILLAINS

Join your favorite hero or villain team on a series of activities that will take place throughout the cruise.

DESCENDANT'S DEN DJ SPIN OFF

Photo Booth! DJ lessons! Fun games! Sing! Laugh! Dance! It's the next generation of fun - Descendants style!



14 - 17 years old

GOTCHA

You will try to eliminate your victim by various methods collecting points throughout the day, last person standing with the most points wins.

THAT'S HILARIOUS

Ever wanted to show off your comedy skills? Then be a part of the cast for the crazy improv show "That's Hilarious" and put on a live show for your friends.

BUENA VISTA THEATRE

Deck 5, Aft

FEATURE MOVIES THIS VOYAGE

MONDAY - SAN JUAN, PUERTO RICO

6:00 pm PG The Nutcracker and the Four Realms
8:15 pm PG The Nutcracker and the Four Realms
10:30 pm PG-13 Ant-Man and the Wasp

TUESDAY - PHILIPSBURG, ST. MAARTEN

9:00 am PG The Incredibles 2
11:30 am PG Christopher Robin
2:15 pm PG-13 Avengers: Infinity War
5:30 pm PG-13 Ant-Man and The Wasp
8:00 pm PG-13 Ant-Man and The Wasp
10:30 pm PG The Incredibles 2

WEDNESDAY - ST. JOHN'S, ANTIGUA

9:00 am PG The Nutcracker and the Four Realms
12:30 pm PG The Incredibles 2
3:00 pm PG Ralph Breaks the Internet
5:30 pm PG Christopher Robin
8:15 pm PG Christopher Robin
10:30 pm PG The Nutcracker and the Four Realms

THURSDAY - CASTRIES, ST. LUCIA

9:00 am PG Ralph Breaks the Internet
11:30 am PG Mary Poppins Returns
2:30 pm PG-13 Ant-Man and the Wasp
5:15 pm PG Mary Poppins Returns
8:00 pm PG Mary Poppins Returns
10:45 pm PG Ralph Breaks the Internet

FRIDAY - BRIDGETOWN, BARBADOS

9:00 am PG Mary Poppins Returns
12:00 pm PG Ralph Breaks the Internet
2:30 pm PG Avengers: Infinity War
5:30 pm PG The Incredibles 2
8:00 pm PG The Incredibles 2
10:30 pm PG-13 Avengers: Infinity War

SATURDAY - DAY AT SEA

8:30 am PG The Nutcracker and the Four Realms
10:30 am PG Ralph Breaks the Internet
3:00 pm PG-13 Ant-Man and The Wasp
5:30 pm PG Ralph Breaks the Internet
8:15 pm PG Ralph Breaks the Internet
10:30 pm PG Mary Poppins Returns

Subject to change.



MORE TO ENJOY ONBOARD

NEW SPRING 2020 ITINERARIES

New Spring 2020 Itineraries announced! Experience sailings to the Caribbean, the Bahamas, Mexico, and Hawaii with your family! And for the very first time, sail from New Orleans to the Caribbean or Bahamas on Disney Wonder. Visit Disney Vacation Planning, Deck 4, Midship for more information. Disney Vacation Planning tends to get busy on the last day of sailing. Don't miss the opportunity to plan your next Disney vacation.

DISNEY VACATION CLUB® GROUP PREVIEW

Join us for our interactive group presentation to learn about taking magical vacations year after year! For more information, please see a Disney Vacation Club Cast Member on Deck 4, Midship, or call 7-2805 from your stateroom phone.

PORT SHOPPING INFORMATION

Come and meet Richard, your Port Shopping Guide, at the Port Shopping Desk, Deck 3, Midship from 7:00 pm - 8:30 pm for a complimentary charm. Don't miss the Port Shopping Talk on Embarkation Day in the Buena Vista Theatre, Deck 5, Aft, at 3:00 pm for all of your Port Shopping information and to enter a raffle for a chance to win a Diamond Pendant. Tune into Channel 24-6 all cruise long for more Port Shopping information.

Connect@Sea

FREE INTERNET EMBARKATION DAY SPECIAL

Sign up for a free 50 MB Internet package today and enjoy it throughout the cruise! This offer is only available from noon to midnight on the day your cruise begins. On your wireless device, simply find the "DCL-Guest" Wi-Fi Network, go to www.dclguest.com to create an account, and get your free 50 MB of data to start sharing your memories even before you leave port! If you have any questions, ask our Connect@Sea Expert located at Deck 3, Aft. No purchase necessary. The free 50 MB package can only be used for the duration of the cruise. Only one free package per stateroom, but everyone can share it. Unused data from a package will not be reimbursed and it is non-transferable between voyages or ships.

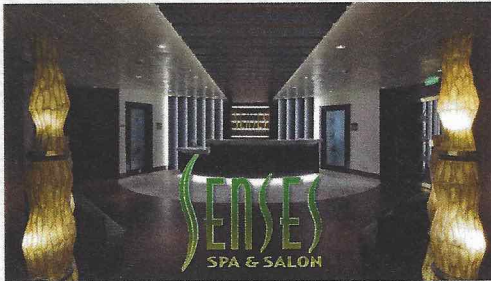
RELIGIOUS SERVICES

Groups who need a location to practice their faith may contact Guest Services for availability information.



SHOPPING
Ashore

SENSES SPA & SALON



DECK 9, FORWARD
Extension 7-1465

RAINFOREST

Come enjoy our serenity lounge, with heated chairs, dry sauna, aromatherapy steam rooms and rainfall, misting showers. 6 Day Pass: Couples \$185 Single \$124

REJUVENATION SPA CONSULTATIONS

Ready to enhance your natural beauty? Book your Facial Rejuvenation consultation with our Rejuvenation Doctor at the Senses Spa.

ONBOARD ACUPUNCTURE

Acupuncture is a safe and effective medicine that allows your body to heal itself, and is effective for various health conditions. See your onboard Acupuncturist for your free consultation.

IONITHERMIE

Lose between 1 – 8 inches. Speed up your metabolism. Firm muscle tone. Improve appearance of cellulite. \$155/1 session or \$299/3 sessions.

BIOTEC FACIALS

Our revolutionary facials address skin tone, blemishes and fine lines to transform the texture of the skin. The ultrasonic peel, massage and light therapy deliver a complexion that has never been smoother.

AN 18% AUTO GRATUITY IS ADDED TO ALL SENSES SPA SERVICES.

MERCHANDISE SHOPPING



DECK 4, FORWARD

HELPFUL SHOPPING TIP

While shopping onboard, you may collect your items from both stores before proceeding to checkout at any register. No need to have to wait in line in each store to pay for your items separately! Mickey's Mainsail and White Caps, Deck 4, Forward.

EFFY JEWELRY SPECIAL OFFER

The stylish Effy jewelry pieces are designed to allow you the opportunity to mix and match to create a look that's all your own. Receive a complimentary Effy scarf and jewelry pouch with each Effy jewelry purchase. While supplies last. White Caps, Deck 4, Forward.

BIBBIDI BOBBIDI BOUTIQUE

A makeover fit for a princess! Fairy Godmothers-in-Training are ready with magic and pixie dust to give your Prince and Princess the transformation of a lifetime. Make your reservations by visiting Bibbidi Bobbidi Boutique, Deck 10, Forward, Port Side, or dialing extension 7-10878. Limited space available.

DISNEY PIN TRADING

Experience the fun of pin trading onboard! You can find everything you need from character lanyards to lanyard medallions. Then fill your lanyard with starter pins to keep and trade and find an entire collection of Disney and Disney Cruise Line pins to tell your Disney story. Mickey's Mainsail, Deck 4, Forward.

DUE TO PORT REGULATIONS, WHEN THE SHIP IS DOCKED, THE STORES WILL REMAIN CLOSED.

SHUTTERS PHOTO GALLERY



DECK 4, AFT

WELCOME ABOARD RAFFLE

View your embarkation photos in Shutters, Deck 4, Aft and enter our raffle for a chance to win a 10 Digital Photos valued at \$149.95. Winner must be present at the 10:00 pm drawing in Shutters, Deck 4, Aft. *Terms and conditions apply. Visit Shutters on Deck 4, Aft for more information.

GET THE PICTURE!

Take home all your stateroom photos from this cruise on a USB! Terms and conditions apply. Visit Shutters on Deck 4, Aft and ask your friendly Shutters staff for more information. Get The Picture! Hurry! Order yours now.

PHOTO BOOK

Turn your magical vacation memories into an impressive keepsake with a personalized PhotoBook. Order by 9:30 pm on the final night of the cruise.

PRIVATE STUDIO PORTRAITURE

Book our exclusive and contemporary Private Studio experience today and capture these memories. No obligation to purchase. Black and White only.

PHOTOS ARE AVAILABLE FOR VIEWING ON OUR INTERACTIVE PHOTO KIOSKS APPROXIMATELY FIVE HOURS AFTER BEING TAKEN AND ARE ONLY AVAILABLE FOR PURCHASE DURING THIS CRUISE.

IMPORTANT INFORMATION

Security Notice/Unaccompanied Minor Ashore
All Guests (including children) who wish to disembark or embark the ship are required to present their Key to the World card at the gangway. A photo ID is also required for those Guests who are 18 years of age or older. Guests under the age of 18 are required to have a Parent, Guardian or other responsible adult complete the "Traveling with Minors" section of "My Online Check-In" prior to sailing or sign an authorization form at the Guest Services Desk if they wish to go ashore unaccompanied or with any adult from another stateroom.

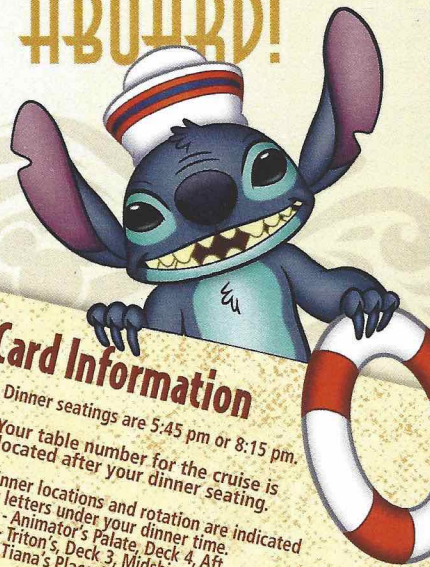
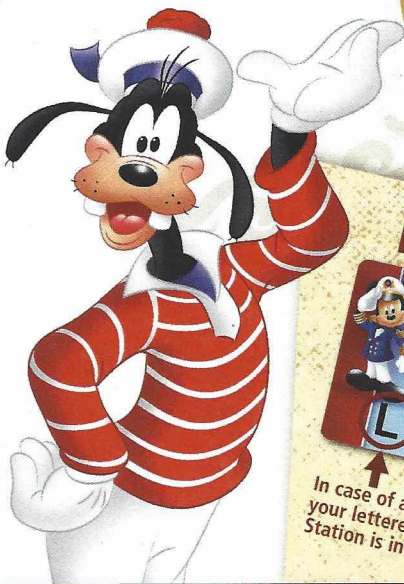
Inclement Weather
For the safety of all Guests, outdoor events may be changed due to unforeseen weather conditions.
Insect Repellent Advisory
The Centers for Disease Control and Prevention recommends wearing long-sleeved shirts and pants along with insect repellent to protect against mosquito bites and related illnesses when going ashore. Complimentary insect repellent is available on the pier as you exit the ship. Insect repellent is also available for purchase in White Caps. When using both sunscreen and insect repellent, use sunscreen first and apply insect repellent on top of sunscreen.

Corridor Quiet Hours
As a courtesy to all our Guests, please recognize quiet hallway hours from 10:00 pm til 8:00 am.
No Reserved Seats Policy
As a courtesy to all our Guests, we kindly advise that the saving of seats is not permitted in the Walt Disney Theatre, and the saving of the sun loungers is not permitted on Deck 9 and 10. Items left unattended will be returned to lost and found at Guest Services, Deck 3 Midship.
Cold and Flu Reminder
Please wash hands frequently and thoroughly, particularly before meals. Contact the Health Center by dialing 7-1927, should anyone in your party become ill.

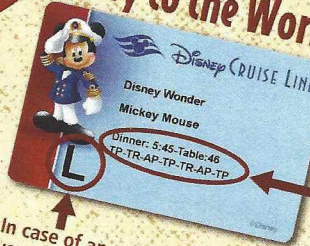
Smoking
For the comfort of our Guests, the following areas are designated as smoking areas:
*Deck 9, Forward, Port Side
*Deck 4, Starboard side from 6:00 pm to 6:00 am only (all of Deck 4 is non-smoking from 6:00 am to 6:00 pm)
Smoking is prohibited inside all Guest staterooms and on stateroom verandahs. Guests found smoking in their staterooms or on their verandahs will be charged a \$250 stateroom recovery fee. Electronic cigarettes may only be used in designated smoking areas.

Walt Disney Theatre
Theatrical performances may use artificial fog, strobe lights, pyrotechnics and other special effects. For the safety of our performers, and the comfort of those around you, the use of any photography, video recording device or any electronic equipment is prohibited.
Verandah Safety
Please do not leave any personal items on your verandah that may be blown overboard or present a fire hazard if left unattended. Do not throw anything over the ship's side. Guests should not sit, lean or climb on the railing or leave children unattended on the verandah. Do not open the verandah and stateroom doors simultaneously as this may create a wind effect and could cause the doors to slam unexpectedly.

WELCOME ABOARD!



Key to the World Card Information



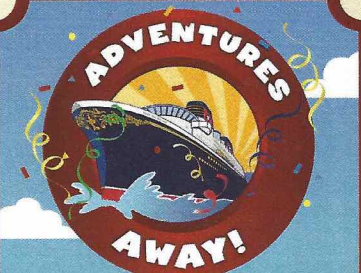
In case of an emergency, your lettered Assembly Station is indicated here.

- ♥ Dinner seatings are 5:45 pm or 8:15 pm.
- ♥ Your table number for the cruise is located after your dinner seating.
- ♥ Dinner locations and rotation are indicated by letters under your dinner time.
AP - Animator's Palate, Deck 4, Aft
TR - Triton's, Deck 3, Midship
TP - Tiana's Place, Deck 3, Aft

FAMILY DECK PARTY

Earn your status as V.I.P. sailors as your Cruise Director, Natalie, your Disney Pals, and the Cruise Staff officially begin your "Adventures Away".

Deck 9 Stage,
4:45 pm



Bay Breeze (Alcoholic)
Bora Shake (Non-Alcoholic)
DRINK OF THE DAY

Afternoon	1:45	2:00	2:15	2:30	2:45	3:00	3:15	3:30	3:45	4:00	4:15	4:30	4:45	5:00	5:15	5:30	5:45	6:00	6:15	6:30	6:45	
FUNNEL VISION	Ratatouille (G) Open Captioning Funnel Vision												Adventures Away Deck 9 Stage		Cars (G) Open Captioning Funnel Vision							
BUENA VISTA THEATRE					Port Shopping Talk																The Nutcracker and the Four Realms (PG) Duration: 1 Hour 39 Minutes	
CHARACTERS	Join the Lion Guard Oceaner Club												Deck 9 Stage		Mickey Mouse DK4 Mid (S)		Goofy Preludes Lobby Atrium (P)		Chip & Dale Lobby Atrium (P)			
FUN FOR ALL AGES	Walking Ship Tour Preludes		Walking Ship Tour Preludes												Pop and Soul with The Belle Adventure Promenade Lounge						The Ventriloquism & Comedy of TAYLOR MASON Walt Disney Theatre	
ADULTS	Join the Lion Guard Open Captioning Oceaner Club		Port Shopping Talk Buena Vista Theatre										Kids Me! Bath Padi Party Senses Spa Fitness Center		Cruisin' Solo Cove Cafe							
VIBE 14-17 YEARS OLD	Youth Activities Open House Open Captioning														Youth Activities Open House Open Captioning						Open for Teens	
EDGE 11-14 YEARS OLD	Youth Activities Open House Open Captioning														Youth Activities Open House Open Captioning						Open for Tweens	
OCEANEER LAB 3-12 YEARS OLD	Youth Activities Open House & Registration Open Captioning		Youth Activities Tour Open Captioning		Open House Open Captioning										Youth Activities Open House & Registration Open Captioning						Ice Breakers	
OCEANEER CLUB 3-12 YEARS OLD	Open House		Join the Lion Guard Open Captioning		Open House		Youth Activities Open House & Registration Open Captioning								Youth Activities Open House & Registration Open Captioning						Pre-School Fun (3-5 Years Old)	

Mandatory Guest Assembly Drill 4:15 pm
(All Guests must attend)

All ship services will be suspended during this time.

Refer to the posted drill instructions on the back of your stateroom door prior to heading to Deck 4. Please bring your Key to the World Card.

You will not need your life jacket for the Guest Assembly Drill.



Your Assembly Station is indicated on your Key To The World card.



Disney WUNDER

Evening	7:00	7:15	7:30	7:45	8:00	8:15	8:30	8:45	9:00	9:15	9:30	9:45	10:00	10:15	10:30	10:45	11:00	11:15	11:30	11:45	12:00			
FUNNEL VISION			Tangled (PG) Open Captioning Funnel Vision						Monsters, Inc. (G) Funnel Vision								Guardians of the Galaxy (PG-13) Funnel Vision							
BUENA VISTA THEATRE					The Nutcracker and the Four Realms (PG) Duration: 1 Hour 39 Minutes												Ant-Man and the Wasp (PG-13)							
CHARACTERS							Pluto Lobby Atrium (P)		Minnie DK4 Mid (S)		Goofy Lobby Atrium (P)		Mickey DK4 Mid (S)						Daisy DK5 Mid (S)		Donald DK5 Mid (S)			
FUN FOR ALL AGES	Disney Tunes Trivia Azure								The Ventriloquism & Comedy of TAYLOR MASON Walt Disney Theatre		D Lounge		D Lounge											
ADULTS	Disney Vacation Club Member Celebration D Lounge		Pop and Soul with The Belle Adventure Promenade Lounge		Slow Jams with The Belle Adventure Promenade Lounge						Cruise Staff DJ Azure		Intuition Azure		The Contortion & Comedy of JONATHAN BURNS Azure		Cruise Staff DJ Azure		Music Through the Decades with Aaron Lotzow Cadillac Lounge		Smooth Sounds with Rodrigo Figueroa Crown & Fin Pub		1820 Society, Stir It, Blend It, Taste It. Cove Cafe	
VIBE 14-17 YEARS OLD	Cards Tournament		Wii Challenge				Ice Breakers		Profiles		The Download		Heroes and Villains											
EDGE 11-14 YEARS OLD	GAGA Ball		Ice Breakers		Profiles		Taking it to The Edge		Heroes and Villains															
OCEANEER LAB 3-12 YEARS OLD	Meet Your Counselors		Oceaneer Rangers		Lava Flow				Human Bingo		GAGA Ball													
OCEANEER CLUB 3-12 YEARS OLD	Welcome Party		Space Ranger Training		Once Upon a Time		Game Challenge		MARVEL Super Hero Academy Avengers Assemble															

FOLD →

Fold along the dotted lines and take me with you so you don't miss any of the fun!

→ FOLD

ASL - AMERICAN SIGN LANGUAGE INTERPRETED

YOUTH ACTIVITIES OPEN HOUSE
A non-secured program with activities for families, adults and children to enjoy together.



The
Comedy and
Ventriloquism of
**Taylor
Mason**

WALT DISNEY THEATRE
Deck 4, Forward
6:15 pm & 8:30 pm

As a courtesy to all Guests, we kindly advise that the saving of seats is **not** permitted in the Walt Disney Theatre.

Assistance is available at the entrance to the Walt Disney Theatre 30 minutes prior to show time.

Character Meet & Greet Ticket Distribution

Port Adventures Desk, Deck 3, Midship - 12:00 pm - 2:00 pm

The following appearances require a reservation. Space is limited. For Guests who did not book online, a limited number of reservations are available for:

- Princess Gathering
- Frozen Gathering

Character Appearances

JOIN THE LION GUARD
Disney's Oceaneer Club
2:00 pm

PLUTO
Lobby Atrium (P) - 9:30 pm

ADVENTURES AWAY
Deck 9 Stage - 4:45 pm

MINNIE MOUSE
DK4 Mid (S) - 9:45 pm

MICKEY MOUSE
DK4 Mid (S)
5:30 pm & 10:15 pm

DONALD DUCK
DK5 Mid (S) - 10:00 pm

GOOFY
Preludes - 5:30 pm
Lobby Atrium (P) - 10:00 pm



CHIP & DALE
Lobby Atrium (P) - 5:45 pm

DAISY DUCK
DK5 Mid (S) - 9:30 pm

(S) Starboard Side - (P) Port Side

For details of daily Disney character appearances, refer to the character line on your Navigator Grid, or the digital character board in the Lobby Atrium. Lines close 15 minutes after advertised start time.

SHIP DIRECTORY

YOUTH ACTIVITIES

DISNEY'S OCEANEER CLUB	DECK 5, MID	12:00 PM - 3:45 PM 4:45 PM - 12:00 AM
DISNEY'S OCEANEER LAB	DECK 5, MID	12:00 PM - 3:45 PM 4:45 PM - 12:00 AM
EDGE	DECK 9, MID	12:00 PM - 3:45 PM 4:45 PM - 12:00 AM
IT'S A SMALL WORLD NURSERY	DECK 5, AFT	12:00 PM - 3:45 PM 4:45 PM - 11:00 PM
VIBE	DECK 10, MID	12:00 PM - 3:45 PM 4:45 PM - 12:00 AM

POOLS

Children under 12 years of age must have adult supervision in all pools.

AQUALAB	DECK 9, AFT	12:00 PM - 3:45 PM 4:45 PM - 6:00 PM
DORY'S REEF	DECK 9, AFT	12:00 PM - 3:45 PM 4:45 PM - 6:00 PM
GOOFY'S POOL	DECK 9, MID	12:00 PM - 3:45 PM 6:00 PM - 10:00 PM
QUIET COVE POOL (18+)	DECK 9, FWD	12:00 PM - 3:45 PM 4:45 PM - 11:00 PM
TWIST N' SPOUT	DECK 9, AFT	12:00 PM - 3:15 PM 4:45 PM - 6:00 PM

Please note, "selfie sticks" are not permitted in any aquatic area. Complimentary pool vests are available for children to use in the pools onboard. They are located on the pool deck.

RECREATION

CHILL SPA	DECK 9, FWD	12:00 PM - 10:00 PM
PORT ADVENTURES DESK	DECK 3, MID	12:00 PM - 3:45 PM 4:45 PM - 10:00 PM
SENSES FITNESS CENTER (18+)	DECK 9, FWD	12:00 PM - 10:00 PM
WIDE WORLD OF SPORTS DECK	DECK 10, FWD	12:00 PM - 3:45 PM 4:30 PM - 11:59 PM

GENERAL INFORMATION

BUENA VISTA THEATRE	DECK 5, AFT	SHOWTIMES
CONNECT@SEA DESK	DECK 3, AFT	1:00 PM - 4:00 PM 7:00 PM - 10:00 PM
DISNEY VACATION CLUB DESK	DECK 4, MID	5:00 PM - 10:00 PM
DISNEY VACATION PLANNING DESK	DECK 4, MID	7:00 PM - 8:00 PM
FUNNEL VISION	DECK 9, MID	SHOWTIMES
GUEST SERVICES	DECK 3, MID	24 HOURS
HAIR BRAIDING	DECK 9, MID	2:30 PM - 6:30 PM
MEDICAL HEALTH CENTER	DECK 1, FWD	4:30 PM - 7:00 PM
PORT SHOPPING DESK	DECK 3, MID	6:30 PM - 8:30 PM
PRELUDES	DECK 4, FWD	SHOWTIMES
SENSES SPA AND SALON	DECK 9, FWD	12:00 PM - 10:00 PM
SHUTTERS PHOTO GALLERY	DECK 4, AFT	6:00 PM - 10:00 PM
WALT DISNEY THEATRE	DECK 4, FWD	SHOWTIMES

SHOPPING

ART GALLERY	DECK 4, MID	
BIBBIDI BOBBIDI BOUTIQUE	DECK 10, FWD	12:00 PM - 3:00 PM 5:00 PM - 9:00 PM
MICKEY'S MAINSAIL	DECK 4, FWD	8:30 PM - 11:00 PM
QUACKS	DECK 9, MID	
SEA TREASURES	DECK 3, FWD	8:45 PM - 10:30 PM
WHITE CAPS	DECK 4, FWD	8:30 PM - 11:00 PM

EVENING ATTIRE Cruise Casual

DINING & LOUNGES

LUNCH

CABANAS	DECK 9, AFT	12:00 PM - 3:00 PM
DAISY'S DE-LITES	DECK 9, AFT	12:00 PM - 3:30 PM 4:15 PM - 6:00 PM
PINOCCHIO'S PIZZERIA	DECK 9, MID	12:00 PM - 3:30 PM 4:15 PM - 6:00 PM
PETE'S BOILER BITES	DECK 9, AFT	12:00 PM - 3:30 PM 4:15 PM - 6:00 PM
TRITON'S (À-LA CARTE)	DECK 3, MID	11:45 AM - 1:30 PM

DINNER

ANIMATOR'S PALATE	DECK 4, AFT	5:45 PM & 8:15 PM
PALO (18+)	DECK 10, AFT	6:00 PM - 8:30 PM
PETE'S BOILER BITES	DECK 9, AFT	6:00 PM - 9:30 PM
TIANA'S PLACE	DECK 3, AFT	5:45 PM & 8:15 PM
TRITON'S	DECK 3, MID	5:45 PM & 8:15 PM

LATE NIGHT SNACKS

CROWN & FIN PUB (18+ AFTER 9:00 PM)	DECK 3, FWD	10:30 PM - 11:30 PM
PINOCCHIO'S PIZZERIA	DECK 9, MID	9:30 PM - 12:00 AM
PROMENADE LOUNGE	DECK 3, AFT	10:30 PM - 11:30 PM

ADDED FEATURES

BEVERAGE STATION	DECK 9, AFT, PORT SIDE	24 HOURS
EYE SCREAM	DECK 9, MID	12:00 PM - 3:30 PM 4:15 PM - 11:00 PM
ROOM SERVICE	DIAL 4330	OPENS AT 1:30 PM

ENTERTAINMENT - LOUNGES - BARS

Adults must be 21 and older to consume alcoholic beverages.

AZURE (18+ AFTER 9:00 PM)	DECK 3, FWD	9:30 PM - 1:00 AM
CADILLAC LOUNGE (18+)	DECK 3, FWD	6:00 PM - 12:00 AM
COVE CAFE (18+)	DECK 9, MID	11:45 AM - 12:00 AM
CROWN & FIN PUB (18+ AFTER 9:00 PM)	DECK 3, FWD	11:45 AM - 12:00 AM
D LOUNGE	DECK 4, MID	SHOWTIMES
PINOCCHIO'S PIZZERIA	DECK 9, MID	11:45 AM - 12:00 AM
PRELUDES	DECK 4, FWD	SHOWTIMES
PROMENADE LOUNGE	DECK 3, AFT	11:45 AM - 12:00 AM
SIGNALS (18+)	DECK 9, FWD	11:45 AM - 10:30 PM
SULLEY'S SIPS	DECK 9, MID	11:45 AM - 5:45 PM

Public Health Advisory: Consuming raw or under-cooked meats, poultry, seafood, shellfish, or eggs may increase your risk for food borne illness, especially if you have certain medical conditions.



Explore and more with our carefully selected Port Adventures. Visit the Port Adventures Desk, Deck 3, Midship to find out more.

IMPORTANT NUMBERS

Fire/Security:	7-3001
Medical EMERGENCY:	7-3000
Health Center:	7-1927