

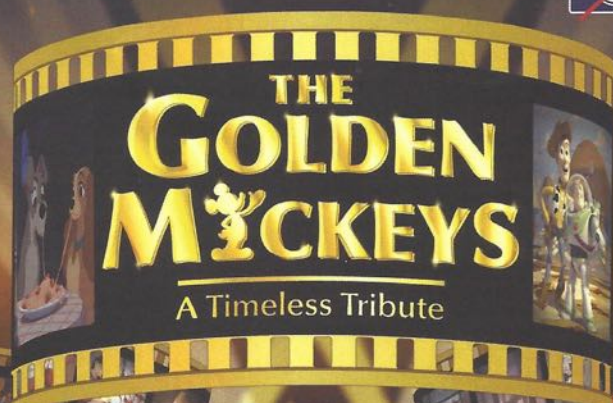
# PERSONAL NAVIGATOR

MONDAY, DECEMBER 28, 2015

Sunrise: 6:36 am Sunset: 5:20 pm  
Evening Attire: Cruise Casual  
All Aboard: 3:45 pm


Today: Partly Cloudy High: 70°F/21°C  
Tomorrow: Partly Sunny High: 78°F/26°C

PORT CANAVERAL, FLORIDA



WALT DISNEY THEATRE  
DECK 3 & 4, FORWARD  
6:15 pm & 8:30 pm

As a courtesy to all Guests, we kindly advise that the saving of seats is **not** permitted in the Walt Disney Theatre.

 Assistance available at the entrance to the Walt Disney Theatre 30 minutes prior to show time.



## Welcome Aboard!

### Your Stateroom & Luggage

Staterooms will be ready at 1:30 pm. Stateroom hosts will deliver luggage throughout the day until 5:30 pm.

### Staterooms with Bunk Beds

Bunk beds are recessed into the ceiling and will be prepared during evening turndown service by your Stateroom Host/ess.

### Stateroom Safe

Each stateroom is equipped with a secured storage safe. Instructions for use are located on the safe.

### To Change Dining Assignment

Requests for a different seating will be taken today:

- 1:00 pm - 3:30 pm; Book in Royal Palace
- 3:30 pm - 4:30 pm; Please call 7-1831, 7-1832, or 7-1833

### Remy & Palo Dining Reservations

Bookings will be taken on a first come basis today at:

- 1:00 pm - 3:30 pm, Palo; Book in Royal Palace
- 1:00 pm - 3:30 pm, Remy; Book in Royal Palace


Reservations required & cover charge applicable.

Please dial 7-9734, or 7-9735 for more information. Openings still available for tonight!

### Dinner

Please check your dining tickets for details of your dining rotation, and bring them to your specific dining location. There is no need to wait in line prior to dinner. Dining Rooms open at designated seating times and your table is reserved each night of your cruise.

- 5:45 pm - First seating
- 8:15 pm - Second seating



**FAMILY DECK PARTY**

It's time to go Sailing Away! Join Mickey and Minnie along with Tinker Bell and the rest of the gang as they welcome you to your Disney Cruise Vacation.

Deck Stage,  
Deck 11, Midship,  
4:30 pm

## Don't Miss:

### Character Meet and Greet Ticket Distribution

Port Adventures Desk, Deck 5, Midship - 11:45 am - 2:30 pm

Pick up your tickets today to meet some of your favorite Disney friends.

- Princess Gathering
- Anna and Elsa

Tickets are required for each of these meet and greets. Space is limited.

### Walking Ship Tour

Preludes, Deck 3, Forward - 1:00 pm & 1:45 pm

(El tour del barco en Español sale a la 1:30 pm desde Preludes, Piso 3, Forward)

Enjoy the beauty of the Disney Dream with your Cruise Staff in this guided tour.

### Saludos Amigos Fiesta

D Lounge, Deck 4, Midship - 10:15 pm

Come see what Donald and his friends are up to this time. Bring the family out to this interactive dance party featuring fun Latin music! Your family will learn to salsa, merengue and just have a Latin good time!

### Match Your Mate (18+)

Evolution, Deck 4, Aft - 10:30 pm

It's time to play everyone's favorite couples game show, Match Your Mate!



### WELCOME ABOARD RAFFLE!

View your Embarkation photos starting at 7:00 pm and enter the raffle for a chance to win a digital photo package of 10 images worth \$149.95! Visit Shutters for all your photographic needs, from digital cameras, batteries, binoculars and accessories. Terms and conditions apply. Visit Shutters on Deck 4, Midship.

## DINNER MENU

Animator's Palate: Pacific Rim Cuisine  
Enchanted Garden: Continental Market  
Royal Palace: French Dinner

## DRINK OF THE DAY

Bahama Mama (Alcoholic)  
Passion Cream Freeze (Non Alcoholic)

### IMPORTANT NUMBERS

Fire/Security: 7-3001  
Medical Emergency: 7-3000  
Health Center: 7-1923

# ADULT ACTIVITY HIGHLIGHTS



**SENSES SPA FITNESS CLASSES & SEMINARS**  
*Acupuncture Demonstration* - Senses Spa & Salon - 2:00 pm  
*Spa Raffle* - Senses Fitness Center - 3:00 pm  
*Kids Me! Bath Peditary* (Nom. Fee) - Senses Spa & Salon - 4:30 pm  
*Complimentary Footprint Analysis* - Senses Fitness Center - 4:30 pm  
*Acupuncture Tongue & Pulse Analysis* - Senses Spa & Salon - 5:00 pm

## BEVERAGE SEMINARS

Whiskey Tasting - Stem to Stern Wine Tasting - Martini Tasting  
 Cognac Tasting - Tequila & Margarita Tasting - Mixology

## TASTING CLASSES

*Whiskey Tasting* (21+) - Meridian - 10:00 pm  
 Please make reservations for tastings at Guest Services for a nominal fee.  
 Tasting Seminars are only for Guests 21 and older.



## 1820 SOCIETY: STIR IT. BLEND IT. TASTE IT.

*Cove Cafe, Deck 11, Forward - 10:00 pm*

Join us for a complimentary tasting event including coffee, chai latte and smoothies in Cove Café exclusively for our 18-20 year olds. You can learn how to create your own specialty coffees as well as plan the activities for the rest of your sailing.

# CRUISE HIGHLIGHTS

Monday	PORT CANAVERAL <i>Port Departure: 5:00 pm</i> <i>All Aboard: 3:45 pm</i> <i>Attire: Cruise Casual</i>	THE GOLDEN MICKEYS <i>Walt Disney Theatre</i> 6:15 pm & 8:30 pm
	NASSAU <i>All Ashore: 9:30 am</i> <i>All Aboard: 5:15 pm</i> <i>Attire: Pirate or Cruise Casual</i>	VILLAINS TONIGHT! <i>Walt Disney Theatre</i> 6:15 pm & 8:30 pm
Wednesday	DISNEY'S CASTAWAY CAY <i>All Ashore: 8:30 am</i> <i>All Aboard: 4:45 pm</i> <i>Attire: Optional Dress Up</i>	DISNEY'S BELIEVE <i>Walt Disney Theatre</i> 6:15 pm & 8:30 pm

Subject to change.

# FUN FOR ALL AGES HIGHLIGHTS



**runDisney: CASTAWAY CAY 5K REGISTRATION (10+)**  
 Sign up today for the runDisney: Castaway Cay 5K! Please visit the Port Adventures Desk or the Guest Services Desk to register at anytime prior to our arrival at Disney's Castaway Cay. Please note that runners must be 10 years of age or older to participate.



## DISNEY VACATION CLUB MEMBERS CELEBRATION

*D Lounge, Deck 4, Midship - 2:30 pm*

Members! Mix and mingle with other Members and learn how you can enhance your Membership! Please see a Disney Vacation Club representative on Deck 4, Midship, or call 7-2805 from your stateroom phone for more information.

## PORT & SHOPPING TALK

*Buena Vista Theatre, Deck 4 & 5, Midship - 2:45 pm*

Join your Port and Shopping Guide Brendan to learn about the incredible tax & duty free shopping ashore this cruise! Free charm bracelet for all in attendance and a raffle to win a diamond pendant!



## SAILING AWAY

*Deck 11 Stage, Deck 11, Midship - 4:30 pm*

It's time to go Sailing Away! Join Mickey and Minnie along with Tinker Bell and the rest of the gang as they welcome you to your Disney Cruise Vacation.



## \$3,000 MEGA JACKPOT BINGO

*Bingo Pre-Sales start at 7:15 pm*

*Evolution, Deck 4, Aft - 7:30 pm*

Join your Cruise Staff as we play for four cash prizes! Plus the chance to win \$3,000 if you can cover your card in 46 numbers or less on the final game. Pre-Sales start 15 minutes prior to game.



## CLUB NEW YEAR'S EVE

*D Lounge, Deck 4, Midship - 7:30 pm*

Club New Year's Eve, you won't want to miss this journey of musical genres in history and performances by some of your favorite Cruise Staff. Bring your family and help us count down to a brand new year!



## MIRROR MIRROR

*D Lounge, Deck 4, Midship - 9:45 pm*

Head to D Lounge for the fairest game show of them all, Mirror Mirror. Featuring the Magic Mirror and everyone's favorite dwarf, Dopey.



## SALUDOS AMIGOS FIESTA

*D Lounge, Deck 4, Midship - 10:15 pm*

Come see what Donald and his friends are up to this time. Bring the family out to this interactive dance party featuring fun Latin music! Your family will learn to salsa, merengue and just have a Latin good time!



## FAMILY SUPERSTAR KARAOKE

*D Lounge, Deck 4, Midship - 10:45 pm*

Join your Cruise Staff in D Lounge tonight and sing along to your favorite song - fun for everyone.



# YOUTH ACTIVITIES HIGHLIGHTS



Deck 5, Midship (7-5864) 5:30 pm - 12:00 am

Infants and toddlers can enjoy toys and activities at it's a small world nursery. Reservations are first come, first served so please stop by!



Deck 5, Midship (7-1440)  
6:45 pm - 12:00 am



Deck 5, Midship (7-1445)  
5:15 pm - 12:00 am

## REGISTRATION FOR 3-12 YEAR OLDS

Meet the Youth Activities Team in Disney's Oceaneer Lab and Disney's Oceaneer Club. Complete your registration and learn all about the Themed Experiences this cruise!

**CLUBHOUSE SERIES** - The Clubhouse Themed Experiences focus on movement and feature content which appeals to younger children. *Recommended for children seven years and younger.*

**STORYBOOK SERIES** - The Storybook Series Themed Experiences are designed with a strong connection to the Disney classic stories. *Recommended for children seven years and younger.*

**JUMP UP! SERIES** - The Jump Up! Themed Experiences will include large group games & movement-oriented activities.

**CREATE & INVENT SERIES** - The Create & Invent Themed Experiences will have a tactile focus allowing children to create and admire their work.

**IN THE SPOTLIGHT SERIES** - The In The Spotlight Themed Experiences focus on children's stage presence with lots of activities and enthusiasm. *Recommended for children seven years and older.*

**SOLVE IT! SERIES** - The Solve It! Themed Experiences are less active, but will challenge children with problem/solutions-based activities. *Recommended for children seven years and older.*

**YOUTH ACTIVITIES OPEN HOUSE** - Activities for families, adults and children of all ages to enjoy together.

### Dine & Play

A convenience for families dining at 8:15 pm, our Youth Activities counselors will be available at 9:15 pm at the entrance of Royal Palace, Enchanted Garden and Animator's Palate dining rooms to bring registered children to join the fun in the Youth Activities areas.



Deck 13, Midship (7-9743) 6:00 pm - 1:00 am  
(11-14 YEAR OLDS)

### TAKING IT TO THE EDGE

10:00 pm  
Come to Edge and get all the info you need to squeeze every bit of fun out of your stay onboard.



Entrance on Deck 4, Forward (7-9417)  
6:00 pm - 1:00 am

(14-17 YEAR OLDS)

### THE DOWNLOAD

10:30 pm  
Come up to Vibe and help plan all the fun activities you will be doing this cruise with your new friends!

# BUENA VISTA THEATRE

Deck 4 & 5, Midship  
Feature Movies this Voyage

## MONDAY - PORT CANAVERAL

5:30 pm PG The Good Dinosaur **DOLBY.3D**  
8:15 pm PG The Good Dinosaur **DOLBY.3D**  
10:30 pm PG-13 Bridge of Spies

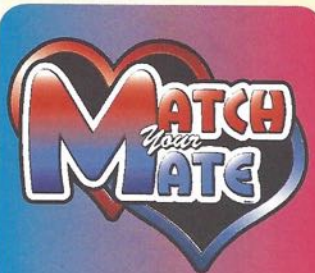
## TUESDAY - NASSAU

10:15 am PG-13 Star Wars: The Force Awakens **Open Captioning**  
1:00 pm PG-13 Ant-Man  
3:30 pm PG-13 Star Wars: The Force Awakens  
6:15 pm PG Inside Out  
8:15 pm PG Inside Out  
11:00 pm PG The Good Dinosaur **DOLBY.3D**

## WEDNESDAY - DISNEY'S CASTAWAY CAY

8:30 am PG Inside Out **DOLBY.3D**  
10:30 am PG-13 Star Wars: The Force Awakens **DOLBY.3D**  
1:00 pm PG The Good Dinosaur  
3:15 pm PG-13 Star Wars: The Force Awakens  
6:00 pm PG-13 Ant-Man  
8:15 pm PG-13 Ant-Man  
10:30 pm PG-13 Star Wars: The Force Awakens **DOLBY.3D**

Subject to change.



### ADULT GAME SHOW

It's time to play everyone's favorite couple's game show, Match your Mate!



Evolution (18+),  
Deck 4, Aft,  
10:30 pm



### FAMILY GAME SHOW

Head to D Lounge for the fairest game show of them all, Mirror Mirror. Featuring the Magic Mirror and everyone's favorite dwarf, Dopey.

D Lounge,  
Deck 4, Midship,  
9:45 pm

## YOUTH ACTIVITIES OPEN HOUSE

Open House is an opportunity for all to come and participate in a variety of exciting activities and free time in it's a small world nursery, the Oceaneer Club, Oceaneer Lab, Edge and Vibe throughout the cruise. During these times secured programming will still be offered in the other venues for those looking to check their children into care.

# MORE TO ENJOY WHILE ONBOARD

## ADVENTURES BY DISNEY® SAVINGS

Choose from over two-dozen guided family vacations on six continents! Find out how onboard Adventures by Disney® savings can help make your dream destination a reality. Visit the Disney Vacation Planning Center, Deck 4, Midship.



## DISNEY VACATION CLUB® MEMBERS CELEBRATION

Members! Mix and mingle with other Members and learn how you can enhance your Membership! Please see a Disney Vacation Club representative on Deck 4, Midship, or call 7-2805 from your stateroom phone for more information.



## PORT & SHOPPING INFORMATION

Join your Shopping Guide Brendan today at 2:45 pm in the Buena Vista Theatre to learn about the incredible shopping ashore in Nassau! Over \$1,000 in give-a-ways and prizes! Arrive early for free gifts and more!



## RAINFOREST DELUXE CRUISE PASS

Enjoy our scented showers, aroma steam, sauna rooms and private jacuzzi overlooking the ocean. Also, read a nice book on the warm loungers! Unlimited entry when you purchase your cruise pass today!

Couples \$102.00 and Singles \$69.00  
Limited number of passes on sale!

*Senses Spa & Salon, Deck 11, Forward*  
*Ext. 7-1465*



## Bibbidi Bobbidi Boutique

A makeover fit for a princess!

Fairy Godmothers-in-Training are ready with magic and pixie dust to give your Prince and Princess the transformation of a lifetime.

Make your reservations by visiting Bibbidi Bobbidi Boutique, Deck 5, Midship or dialing extension 7-9438. Limited space available.



## OUR CRUISE PHOTOS!

*Order a Our Cruise Photos! digital package and share your vacation memories digitally! No need to decide which photos to take home now, select your photos from the comfort of your home. Print, send and share your photos easily! Hurry, as supplies are limited.*

\*Terms and conditions apply. Photos captured on your vacation are only available for purchase during this cruise.

## RELIGIOUS SERVICES

Groups who need a location to practice their faith may contact Guest Services for availability information.

## Connect @ Sea

Sign up for a free 50 MB Internet package today and enjoy it throughout the cruise! This offer is only available from noon to midnight on the day your cruise begins. On your wireless device, find the "DCL-Guest" Wi-Fi Network, go to [www.dclguest.com](http://www.dclguest.com) to create an account, and get your free 50 MB of data to start sharing your memories even before you leave port! No purchase necessary. The free 50 MB package can only be used for the duration of the cruise. Only one free package per stateroom, but everyone can share it. Unused data from a package will not be reimbursed and it is non-transferable between voyages or ships.



From a visit to the world-renowned Atlantis Resort in Nassau to Parasailing high above the turquoise waters around Castaway Cay, there is an adventure for everyone on your Disney Dream cruise. Visit the friendly team at the Port Adventures Desk, Deck 5, Midship, to learn more about these, and many more Port Adventures.

*Port Adventures Desk, Deck 5, Midship*

## SHOPPING

### BIBBIDI BOBBIDI BOUTIQUE

A makeover fit for a princess! Fairy Godmothers-in-Training are ready with magic and pixie dust to give your Prince and Princess the transformation of a lifetime. Make your reservations by visiting Bibbidi Bobbidi Boutique, Deck 5, Midship or dialing extension 7-9438. Limited space available.

### BEAUTIFUL JEWELRY DESIGNS BY BELLARRI

Each BELLARRI jewelry design is a delicate art form in which the blending of colors and unique cuts of gemstones must intertwine in harmony. Discover these harmonious designs when you visit White Caps, Deck 3, Forward.

### ALEX AND ANI AVAILABLE ONBOARD!

Perfect for the Disney fan with a flair for fashion, head to White Caps where you'll find the stylish bangles by Alex and Ani featuring Disney-inspired charms such as the specially designed Disney Cruise Line charm. Deck 3, Forward.

### ROMERO BRITTO ART AT THE VISTA GALLERY

Stop by the Vista Gallery to view original artwork by popular artists such as Romero Britto. Britto's whimsical and colorful pieces feature some of your favorite Disney characters in a style that only Britto can create. Deck 4, Midship.

### GREAT REASON TO SHOP ONBOARD!

The Force is strong onboard Disney Cruise Line! Head to the onboard merchandise shops, Deck 3, Forward, where you can purchase a Disney Cruise Line Star Wars Backpack for \$17.95 with any merchandise purchase of \$50.00 or more. While supplies last. Offer subject to restrictions and change without notice.

### EXCLUSIVE STAR WARS THEMED MERCHANDISE

The Force is strong on the Disney Dream Cruise Ship! Choose your alliance and gear up with fun new Star Wars merchandise designed exclusively for Disney Cruise Line. White Caps, Deck 3, Forward.

Due to port regulations, when the ship is docked, the stores will remain closed.

## IMPORTANT INFORMATION

### Security Notice

All Guests (including children) who wish to disembark the ship are required to present their Key to the World card at the gangway. A photo ID is also required for those Guests who are 18 years of age or older. Guests under the age of 18 are required to have a parent, guardian or other responsible adult sign an authorization form at the Guest Service Desk if they wish to go ashore unaccompanied or with any adult from another stateroom.

### Inclement Weather

For the safety of all Guests, outdoor events may be changed due to unforeseen weather conditions.

### Cold and Flu Reminder

Please wash hands frequently and thoroughly, particularly before meals. Contact the Health Center by dialing 7-1923, should anyone in your party become ill.

### Corridor Quiet Hours

As a courtesy to all our Guests, please recognize quiet hallway hours from 10:00 pm - 8:00 am.

### Sunscreen/Insect Repellent Advisory

Use sunscreen first and protect against mosquito bites and related illnesses by applying insect repellent on top of sunscreen when going ashore. Insect repellent is available for purchase in White Caps.

### Environmental Message

With Disney's commitment to the environment, please refrain from throwing anything over the ship's side. Thank you!

### No Reserved Seats Policy

As a courtesy to all our Guests, we kindly advise that the saving of seats is not permitted in the Walt Disney Theatre, and the saving of the sun loungers is not permitted on Deck 11, 12 and 13. Items left unattended will be returned to lost and found at Guest Services, Deck 3, Midship.

### Smoking

For the comfort of our guests the following areas are designated as Smoking areas:

- Deck 13, Forward, port side, by "Currents"
- Deck 12, Aft, port side outdoor area that is accessible through the Meridian Lounge
- Deck 4, Aft, port side, the outside Promenade Deck from 6:00 pm to 6:00 am only (all of Deck 4 is no smoking from 6:00 am to 6:00 pm).
- Smoking is prohibited inside all Guest staterooms and on stateroom verandahs. Guests found smoking in their staterooms or on their verandahs will be charged a \$250 stateroom recovery fee. Electronic cigarettes may only be used in designated smoking areas.

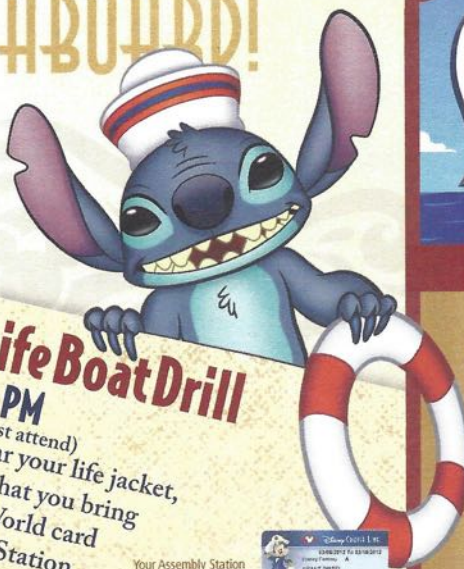
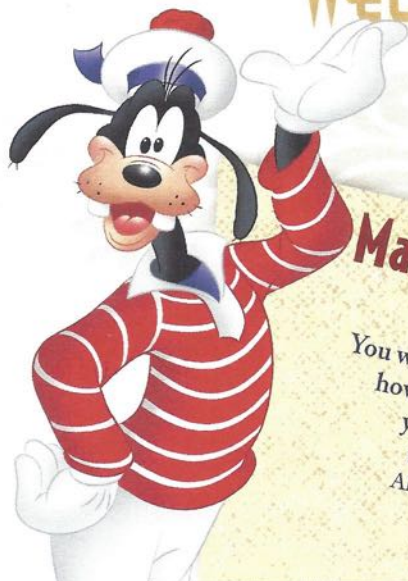
### Walt Disney Theatre

Theatrical performances may use artificial fog, strobe lights, pyrotechnics and other special effects. For the safety of our performers and the comfort of those around you, the use of any photography, video recording devices or any electronic equipment is prohibited.

### Verandah Safety

Please do not leave any combustible materials on your balcony when not present in your stateroom for safety reasons.

# WELCOME ABOARD!



## Mandatory Life Boat Drill

**4:00 PM**  
 (All Guests must attend)  
 You will not need to wear your life jacket, however it is critical that you bring your Key To The World card to your Assembly Station. All ship services will be suspended between 3:45 and 4:30 pm.

Your Assembly Station is indicated on your Key To The World card.



## SAILING AWAY

It's time to go Sailing Away! Join Mickey and Minnie along with Tinker Bell and the rest of the gang as they welcome you aboard the Disney Dream.

**4:30 pm**  
**Deck Stage**  
**Deck 11, Midship**

Symbol for activities that will be repeated during the cruise

FOLD

Fold along the dotted lines and take me with you so you don't miss any of the fun!

FOLD

AT THE SPOTLIGHT SERIES  
 CREATE & INVENT SERIES  
 OPEN HOUSE

JUMP UP! SERIES  
 CLUBHOUSE SERIES  
 STORYBOOK SERIES

Afternoon	1:45	2:00	2:15	2:30	2:45	3:00	3:15	3:30	3:45	4:00	4:15	4:30	4:45	5:00	5:15	5:30	5:45	6:00	6:15	6:30	6:45
FUNNEL VISION	Frozen (PG) Funnel Vision										Sailing Away Funnel Vision								Toy Story (G) Funnel Vision		
BUENA VISTA THEATRE			Port & Shopping Talk Buena Vista Theatre												The Good Dinosaur (PG) <b>DOLBY 3D</b> Duration: 1 Hour 40 Minutes						
CHARACTERS													Pluto Deck 4, Balcony		Mickey Deck 4, Balcony						
FUN FOR ALL AGES	Walking Ship Tour Preludes < Earlier tour at 1:00pm		Disney Vacation Club D Lounge - Members Celebration										Sailing Away Deck Stage		Live Music with EnharmoniQ Lobby Atrium		Red Carpet Arrivals		THE GOLDEN MICKEYS A Timeless Tribute Walt Disney Theatre		
	Tour del Barco Preludes < Inicia 1:30 pm		Port & Shopping Talk Buena Vista Theatre										Kids Me! Bath Padi Party Senses Spa & Salon		Live Music with The Get Ups District Lounge						
ADULTS			Spa Raffle Senses Fitness Center										Footprint Analysis Senses Fitness Center		Acupuncture Tongue & Pulse Analysis Senses Spa & Salon						
	Acupuncture Demonstration Senses Spa & Salon														Live Piano with Joe Creamer Pink: Wine and Champagne Bar						
VIBE 14-17 YEARS OLD	Youth Activities Open House												Youth Activities Open House						Open for Teens		
EDGE 11-14 YEARS OLD	Youth Activities Open House												Youth Activities Open House						Open for Tweens		
OCEANEER LAB 3-12 YEARS OLD	Youth Activities Open House & Registration												Youth Activities Open House		Choose Your Cruise				Meet Your Counselors		
OCEANEER CLUB 3-12 YEARS OLD	Youth Activities Open House & Registration												Open House		Choose Your Cruise		Magic Playfloor		Youth Activities Open House & Registration		

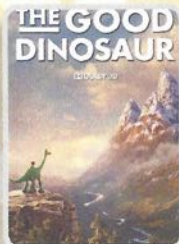


Evening	7:00	7:15	7:30	7:45	8:00	8:15	8:30	8:45	9:00	9:15	9:30	9:45	10:00	10:15	10:30	10:45	11:00	11:15	11:30	11:45	12:00
FUNNEL VISION									Monday Night Football: Cincinnati Bengals vs. Denver Broncos Funnel Vision (Subject to Satellite Reception & Availability)												
BUENA VISTA THEATRE					The Good Dinosaur (PG) <b>DOLBY 3D</b> Duration: 1 Hour 40 Minutes										Bridge of Spies (PG-13) Duration: 2 Hour 15 Minutes						
CHARACTERS	Mickey Mouse Deck 4, Balcony		Belle Lobby Atrium (V)						Mickey Mouse Deck 4, Balcony				Cinderella Lobby Atrium (V)								
	Minnie Mouse Lobby Atrium (H)								Belle Lobby Atrium (V)												
FUN FOR ALL AGES	Bingo Pre Sales		\$3,000 Mega Jackpot <b>BINGO</b> Evolution		Red Carpet Arrivals		THE GOLDEN MICKEYS A Timeless Tribute Walt Disney Theatre		Live Music with EnharmoniQ Lobby Atrium		Mirror Mirror D Lounge		Saludos Amigos Fiesta D Lounge		STAR WARS THE FORCE AWAKENS DECK 3 & 4 FORWARD DOORS OPEN 15 MIN PRIOR TO SHOWTIME 2:16 MIN PG-13		Family Superstar Karaoke D Lounge				
ADULTS			70's Music Trivia District Lounge				Monday Night Football: Cincinnati vs. Denver Pub 687 (Subject to Satellite Reception & Availability)				1820 Society Cove Cafe		The Get Ups LIVE District Lounge		Cruisin' Solo Gathering Vista Cafe		Evolution		Cruise Staff DJ District Lounge		
			Live Piano with Joe Creamer Pink: Wine and Champagne Bar																		
VIBE 14-17 YEARS OLD	Open for Teens		Meet Your Counselors		Chillin' in Vibe		Game Challenge		Ice Breakers		The Download		Gender Wars								
EDGE 11-14 YEARS OLD	Open for Tweens		Game Challenge		Chillin' in Edge		Profiles		Ice Breakers		Taking it to The Edge		Choose Your Cruise		Gender Wars						
OCEANEER LAB 3-12 YEARS OLD	Ice Breakers		Magic PlayFloor		Get the Hook		Playmation		Pirates of the Caribbean		Wacky Relays		GAGA Ball								
OCEANEER CLUB 3-12 YEARS OLD	SW Tales from a Galaxy		Toy Story Boot Camp				SW Tales from a Galaxy		Parachute Games		Disney Infinity Challenge		Star Wars Galaxy Designers								

# BUENA VISTA THEATRE

Deck 4 & 5, Midship

DOLBY 3D



5:30 pm & 8:15 pm  
Duration: 1 hr 40 mins  
Rating: PG



10:30 pm  
Duration: 2 hrs 15 mins  
Rating: PG-13

## YOUTH ACTIVITIES THEMED EXPERIENCES

**CLUBHOUSE SERIES**  
focuses on movement and features content which appeals to younger children.

**JUMP UP! SERIES**  
includes large group games & movement-oriented activities.

**IN THE SPOTLIGHT SERIES**  
focuses on children's stage presence with lots of activities and enthusiasm.

**STORYBOOK SERIES**  
is designed with a strong connection to the Disney classic stories.

**CREATE & INVENT SERIES**  
will have a tactile focus allowing children to create and admire their work.

**SOLVE IT! SERIES**  
are less active, but will challenge children with problem/solutions-based activities.

### OPEN HOUSE

are activities for families, adults and children of all ages to enjoy together.

## SHIP DIRECTORY

### YOUTH ACTIVITIES

DISNEY'S OCEANEER CLUB	DECK 5, MID	6:45 PM - 12:00 AM
DISNEY'S OCEANEER LAB	DECK 5, MID	5:15 PM - 12:00 AM
EDGE	DECK 13, MID	6:00 PM - 1:00 AM
VIBE	DECK 4, FWD	6:00 PM - 1:00 AM
IT'S A SMALL WORLD NURSERY	DECK 5, MID	5:30 PM - 12:00 AM

### POOLS & MORE

\* Children under 12 must have adult supervision in pool areas.

AQUADUCK	DECK 12, AFT	11:45 AM - 3:00 PM
		4:30 PM - 10:00 PM
DONALD'S POOL	DECK 11, MID	12:00 PM - 3:15 PM
		8:00 PM - 10:00 PM
FUNNEL PUDDLE	DECK 12, FWD	12:00 PM - 6:00 PM
MICKEY'S POOL	DECK 11, MID	12:00 PM - 3:15 PM
		4:30 PM - 10:00 PM
MICKEY'S SLIDE	DECK 11, MID	12:00 PM - 3:15 PM
		4:30 PM - 6:00 PM
NEMO'S REEF	DECK 11, MID	12:00 PM - 3:15 PM
		4:30 PM - 6:00 PM
QUIET COVE POOL (18+)	DECK 11, FWD	12:00 PM - 10:00 PM
SATELLITE FALLS (18+)	DECK 13, FWD	12:00 PM - 8:00 PM

Complimentary pool vests are available for children to use in the pools onboard. Located on the pool deck.

### RECREATION

GOLF/SPORTS SIMULATOR	DECK 13, AFT	12:00 PM - 3:30 PM
		4:30 PM - 6:00 PM
GOOFY GOLF	DECK 13, AFT	5:30 PM - 10:00 PM
GOOFY'S SPORTS DECK	DECK 13, AFT	12:00 PM - 6:00 PM
MIDSHIP DETECTIVE AGENCY	DECK 2 & 5, MID	12:00 PM - 11:00 PM
		12:00 PM - 11:00 PM
PORT ADVENTURES DESK	DECK 5, MID	12:00 PM - 3:30 PM
		4:30 PM - 6:00 PM
		7:00 PM - 10:00 PM
SENSES FITNESS CENTER (18+)	DECK 11, FWD	12:00 PM - 10:00 PM

### GENERAL INFORMATION

BUENA VISTA THEATRE	DECK 4 & 5, MID	SHOWTIMES
DISNEY VACATION PLANNING CENTER	DECK 4, MID	5:00 PM - 10:00 PM
GUEST SERVICES	DECK 3, MID	24 HOURS
HAIRBRAIDING	DECK 11, MID	4:30 PM - 10:00 PM
MEDICAL HEALTH CENTER	DECK 1, FWD	4:30 PM - 7:00 PM
PORT & SHOPPING DESK	DECK 4, MID	6:00 PM - 8:00 PM
PRELUDES	DECK 3, FWD	5:30 PM - 9:00 PM
SENSES SPA AND SALON	DECK 11, FWD	12:00 PM - 10:00 PM
SHUTTERS PHOTO GALLERY	DECK 4, MID	7:00 PM - 10:30 PM
WALT DISNEY THEATRE	DECK 3 & 4, FWD	SHOWTIMES

### SHOPPING

BIBBIDI BOBBIDI BOUTIQUE	DECK 5, MID	12:00 PM - 3:00 PM
		5:00 PM - 9:00 PM
MICKEY'S MAINSAIL	DECK 3, FWD	5:45 PM - 11:00 PM
SEA TREASURES	DECK 3, FWD	5:45 PM - 11:00 PM
QUACKS	DECK 11, MID	
VISTA GALLERY	DECK 4, MID	6:00 PM - 11:00 PM
WHITE CAPS	DECK 3, FWD	5:45 PM - 11:00 PM
WHOZITS & WHATZITS	DECK 11, MID	12:00 PM - 6:00 PM

DUE TO PORT REGULATIONS, WHEN THE SHIP IS DOCKED, THE STORES MUST REMAIN CLOSED.

<b>DINNER MENU</b>	Animator's Palate: Pacific Rim Cuisine	<b>DRINK OF THE DAY</b>	Bahama Mama (Alcoholic)	<b>WEATHER FORECAST</b>	Today: Partly Cloudy
	Enchanted Garden: Continental Market		Royal Palace: French Dinner		High: 70°F/21°C
	Dining Times: 5:45 pm & 8:15 pm		Passion Cream Freeze (Non Alcoholic)		Tomorrow: Partly Sunny
					High: 78°F/26°C

Evening Attire: Cruise Casual

## DINING & LOUNGES

### LUNCH

CABANAS	DECK 11, AFT	11:45 AM - 3:00 PM
ENCHANTED GARDEN	DECK 2, MID	12:00 PM - 2:00 PM
FILLMORE'S FAVORITES	DECK 11, MID	12:00 PM - 3:15 PM
		4:30 PM - 6:00 PM
LUIGI'S PIZZA	DECK 11, MID	12:00 PM - 3:15 PM
		4:30 PM - 6:00 PM
TOW MATER'S GRILL	DECK 11, MID	12:00 PM - 3:15 PM
		4:30 PM - 6:00 PM

### DINNER

ANIMATOR'S PALATE	DECK 3, AFT	5:45 PM & 8:15 PM
ENCHANTED GARDEN	DECK 2, MID	5:45 PM & 8:15 PM
PALO (18+) (RESERVATIONS REQ. & NON. FEE APPLIES)	DECK 12, AFT	6:00 PM - 8:30 PM
REMY (18+) (RESERVATIONS REQ. & NON. FEE APPLIES)	DECK 12, AFT	6:00 PM - 8:30 PM
ROYAL PALACE	DECK 3, MID	5:45 PM & 8:15 PM
TOW MATER'S GRILL	DECK 11, MID	6:00 PM - 11:00 PM

### LATE NIGHT SNACKS

LUIGI'S PIZZA	DECK 11, MID	9:30 PM - 12:00 AM
THE DISTRICT	DECK 4, AFT	10:45 PM - 11:30 PM

### ADDED FEATURES

BEVERAGE STATION	DECK 11, MID	24 HOURS
EYE SCREAM	DECK 11, MID	12:00 PM - 12:00 AM
ROOM SERVICE	DIAL 0	24 HOURS
VANELLOPE'S SWEETS AND TREATS	DECK 11, AFT	11:30 AM - 3:15 PM
		4:30 PM - 10:30 PM

### ENTERTAINMENT - LOUNGES - BARS

Adults must be 21 and older to consume alcoholic beverages.

BON VOYAGE	DECK 3, MID	11:30 AM - 11:00 PM
COVE BAR (18+)	DECK 11, FWD	11:30 AM - 10:30 PM
COVE CAFE (18+)	DECK 11, FWD	11:30 AM - 12:00 AM
CURRENTS (18+)	DECK 13, FWD	11:30 AM - 11:00 PM
D LOUNGE	DECK 4, MID	SHOWTIMES
DISTRICT LOUNGE (18+ AFTER 9:00 PM)	DECK 4, AFT	11:30 AM - 2:00 AM
EVOLUTION (18+)	DECK 4, AFT	9:30 PM - 12:00 AM
FROZONE TREATS	DECK 11, MID	11:30 AM - 6:00 PM
MERIDIAN (18+)	DECK 12, AFT	5:00 PM - 12:00 AM
OUTLOOK (18+)	DECK 14, MID	
PINK WINE AND CHAMPAGNE BAR (18+)	DECK 4, AFT	5:00 PM - 12:00 AM
PUB 687 (18+ AFTER 9:00 PM)	DECK 4, AFT	11:30 AM - 12:00 AM
SENSES JUICE BAR	DECK 11, FWD	12:00 PM - 10:00 PM
SKYLINE (18+)	DECK 4, AFT	5:00 PM - 12:00 AM
VISTA CAFE	DECK 4, MID	11:30 AM - 11:00 PM
WAVES	DECK 12, AFT	11:30 AM - 6:00 PM

Public Health Advisory: Consuming raw or under-cooked meats, poultry, seafood, shellfish, or eggs may increase your risk for food borne illness, especially if you have certain medical condition.

## Character Meet and Greet Ticket Distribution

Port Adventures Desk, Deck 5, Midship - 11:45 am - 2:30 pm

Pick up your tickets today to meet some of your favorite Disney friends.

- Princess Gathering
- Anna and Elsa

Tickets are required for each of these meet and greets. Space is limited.

## Character Appearances

### SAILING AWAY

Deck 11 Stage  
4:30 pm

### MINNIE MOUSE

Lobby Atrium (H)  
7:15 pm & 9:45 pm

### PLUTO

Deck 4, Balcony  
5:15 pm

### BELLE

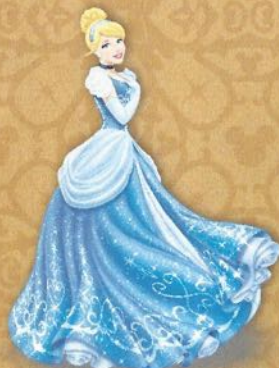
Lobby Atrium (V)  
8:00 pm & 9:30 pm

### MICKEY MOUSE

Deck 4, Balcony  
5:45 pm, 7:15 pm & 9:30 pm

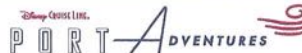
### CINDERELLA

Lobby Atrium (V)  
7:15 pm & 10:00 pm



(H) Hallway - (S) Starboard Side - (P) Port Side - (V) Vestibule

For details of daily Disney character appearances, refer to the character line on your Navigator Grid, or the digital character board in the Lobby Atrium.



Visit the Port Adventures Desk, Deck 5, Midship, for bookings & questions.

## IMPORTANT NUMBERS

Fire/Security: 7-3001  
Medical Emergency: 7-3000  
Health Center: 7-1923