

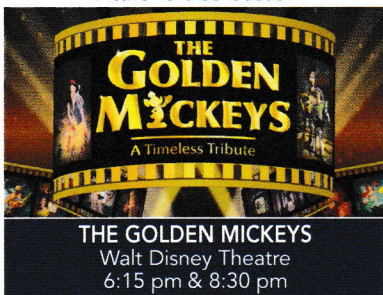
VOYAGE NAVIGATOR

MONDAY
DECEMBER 24, 2018
TO
FRIDAY
DECEMBER 28, 2018

CRUISE HIGHLIGHTS

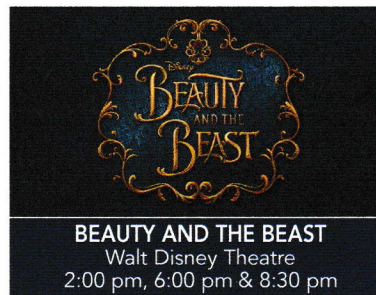
MONDAY

PORT CANAVERAL
Port Departure: 5:00 pm
All Aboard: 3:45 pm
Attire: Cruise Casual



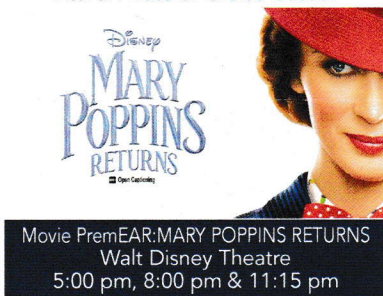
TUESDAY

DAY AT SEA
Attire: Optional Dress Up



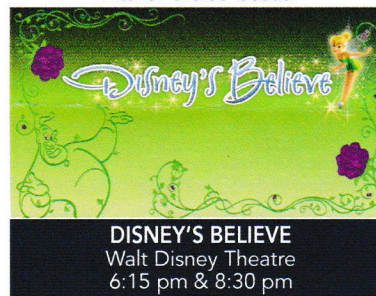
WEDNESDAY

NASSAU
All Ashore: 8:00 am
All Aboard: 5:15 pm
Attire: Pirate or Cruise Casual



THURSDAY

DISNEY CASTAWAY CAY
All Ashore: 8:30 am
All Aboard: 4:45 pm
Attire: Cruise Casual



Subject to change.

WELCOME ABOARD!

YOUR STATEROOM & LUGGAGE

Staterooms will be ready at 1:30 pm. To allow your Stateroom Host/ess time to prepare your room, please do not remove the blue stanchion straps. Stateroom hosts will deliver luggage throughout the day until 6:00 pm.

STATEROOMS WITH BUNK BEDS

Bunk beds are recessed into the ceiling and will be prepared during evening turndown service by your Stateroom Host/ess.

STATEROOM SAFE

Each stateroom is equipped with a secured storage safe. Instructions for use are located on the safe.

TO CHANGE DINING ASSIGNMENT

Requests for different seating times will be taken today:
1:00 pm - 3:30 pm; Book in Enchanted Garden, Deck 2 Mid
3:30 pm - 5:00 pm; please dial 7-1831, 7-1832, or 7-1833

REMY & PALO DINING RESERVATIONS

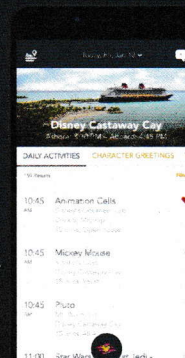
Reservations are required and will be taken on a first come basis today:
1:00 pm - 3:30 pm; Enchanted Garden, Deck 2 Mid
Please dial 7-9734 for Remy or 7-9735 for Palo for more information. Cover charge applicable.
Adult Exclusive Dining Opportunity! Guests are invited to make 2 dinner reservations at our two adult-exclusive restaurants, Palo & Remy. This includes one reservation on embarkation evening and one more on another night of the cruise. Reservations are subject to availability and a specialty dining charge will apply.

DINNER

5:45 pm - First seating 8:15 pm - Second seating
Please check your Key To The World Card for details of your dining rotation, and bring them to your specific dining location. There is no need to wait in line prior to dinner. Dining Rooms open at designated seating times and your table is reserved each night of your cruise.
A = Animator's Palate, Deck 3, Aft E = Enchanted Garden, Deck 2, Midship R = Royal Palace, Deck 3, Midship

DOWNLOAD THE
**DISNEY CRUISE LINE
NAVIGATOR APP**
BEFORE YOU SAIL AWAY

Explore all that's going on aboard your Disney cruise.



Tap the Disney Cruise Line logo to view your Personal Itinerary

Send messages to your friends and family on the ship.

Your Personal Itinerary includes all activities booked at home and onboard.

Create the most memorable experiences during your Disney Cruise Line vacation with Port Adventures! Our Port Adventures are designed for you to see the best our ports have to offer. Stop by the Port Adventures Desk, Deck 5, Midship where our friendly team will be happy to assist you plan your adventure!

There is an adventure for everyone on your Disney Dream® vacation.

IMPORTANT NUMBERS

Fire/Security: 7-3001

Medical Emergency: 7-3000

Health Center: 7-1927

Disney CRUISE LINE
PORT ADVENTURES

ADULT ACTIVITY HIGHLIGHTS



1820 SOCIETY (GUESTS 18-20 YEARS ONLY)
1820 Society is an exclusive option for young adult guests. Come meet fellow passengers and learn about the excellent activities that the Dream offers to create the perfect cruise experience.



80'S MUSIC CHALLENGE
"Moon Walk" back to the 80's as we put your musical knowledge of the decade to the test.

CRUISIN' SOLO GATHERING

Single, single parent or just traveling alone? Join your Cruise Staff for an informal gathering.



KRAZY KARAOKE
Take to the stage, grab a microphone and sing your favorite tunes with your Club Host and DJ.



MAKING OF THE DREAM
Explore the origins of Disney Cruise Line and the latest and greatest innovations conjured especially for the Disney Dream in this fascinating and entertaining behind-the-scenes program.



MATCH YOUR MATE
It's time to play everyone's favorite couples game show, Match Your Mate!

VARIETY ACT

Featuring the daring jump rope hijinks! of Flight Crew, as they entertain you in this adult exclusive show.



Senses Spa & Salon has a variety of seminars and fitness classes available throughout the cruise. Pamper yourself with therapeutic spa treatments of heat, steam, rain and water in luxurious and tranquil private rooms. Deck 11, Forward.

BEVERAGE SEMINARS

Your Beverage team has a host of tastings and seminars to entertain and educate you. Stop by Guest Services Deck 3, Midship to pre-book these experiences. (nominal fee applies).

Whiskey Tasting - Stem to Stern Wine Tasting - Martini Tasting
Cognac Tasting - Tequila & Margarita Tasting - Mixology

FEATURED HOLIDAY EVENTS



MICKEY'S TREE LIGHTING MAGIC
Join Mickey and the gang for a holiday sing along as a family of dreamers helps us create a little Disney magic by lighting our holiday tree. Come gather in the ship's atrium to experience this magical Disney Cruise Line holiday tradition



SANTA'S WINTER WONDERLAND BALL
Join your Cruise Director as we celebrate the arrival of a very special holiday Guest - Santa Claus! Get your cameras ready. You don't want to miss Santa and the World Famous Disney Characters as they create a Winter Wonderland.... at sea!



DECK THE DECK TROPICAL HOLIDAY PARTY
How do you celebrate the Holidays when you're on a tropical cruise? Your Disney pals know how to get a holiday party started with the magic of the tropics as our background! Mele Kaliki Maka everyone!

FUN FOR ALL AGES HIGHLIGHTS



ANYONE CAN COOK
Every Chef has a specialty, and ours is no exception. Get a taste of perfection with each day's recipe.



A PIRATES LIFE FOR ME
Calling all Pirates, we be! If ye have an adventurous spirit or pirate savvy, come spin the "Wheel of Destiny" for a treasure trove of fun be ripe for the takin' in this action packed pirate game show.



BUCCANEER BLAST FIREWORKS
What's a pirate party without some fireworks to remind the other ships who be ruling the oceans blue? (Weather Permitting)



CASTAWAY CAY 5K (10+)
Sign up today for the Castaway Cay 5K! Please visit the Port Adventures Desk or the Guest Services Desk to register at anytime prior to our arrival at Disney Castaway Cay. Please note that runners must be 10 years of age or older to participate.



DISNEY JUNIOR PIRATE & PRINCESS DANCE PARTY
Calling all Pirates and Princesses! Come join us for a family dance party featuring music and fun activities from Jake & the Neverland Pirates and Sofia the First. Whether you favor tiaras or treasure chests, there's something for you at our Disney Junior Pirate & Princess Dance Party!



DISNEY VACATION CLUB GROUP PREVIEW
Join us for our interactive group presentation to learn about taking magical vacations year after year! For more information, please see a Disney Vacation Club Cast Member on Deck 4, Midship, or call 7-2805 from your stateroom phone.



ESPN SPORTS CAMP
Calling all athletes! Gather your team and participate in a one of a kind sports camp at sea that only Disney and ESPN could offer. Learn new games, compete as teams & individuals - and have some fun!



FAMILY FUSION
Bring the entire family and test your Disney knowledge in the high-tech interactive game show, Family Fusion.



JACK-JACK'S INCREDIBLE DIAPER DASH
Calling all baby cruisers! It's time to take to the mat to see who's the fastest crawler of the seven seas! Register your baby 15 minutes prior to the big race.



JACKPOT BINGO
CASH prizes and raffle prizes to be won in our family friendly Bingo sessions with your Cruise Staff. Those under the age of 18 must be accompanied by an adult to play.



MICKEY'S PIRATES IN THE CARIBBEAN
It's a Pirate Celebration, me hearties! Come experience all the pirate fun alongside Captain Mickey Mouse and his famous pirate crew. Play, dance and acquire all the pirate skills needed to become an official member of Mickey's Pirate Crew! (Weather Permitting)



SALUDOS AMIGOS FIESTA
Come see what Donald and his friends are up to this time. Bring the family out to this interactive dance party featuring fun Latin music! Your family will learn to salsa, merengue and just have a Latin good time!



SO YOU THINK YOU KNOW YOUR FAMILY?
This fun-filled family game show is always full of surprises. Find out how well you know, or don't know your family!

YOUTH ACTIVITIES INFO & HIGHLIGHTS



Dine & Play

A convenience for families dining at 8:15 pm, our Youth Activities counselors will be available at 9:15 pm at the entrance of Royal Palace, Enchanted Garden and Animator's Palate dining rooms to bring registered children to join the fun in the Youth Activities areas.

Pre-School Fun

Disney's Oceaneer Club is reserved for only those between 3-5 years of age. This is a time for them to become acclimated to Disney's Oceaneer Club, make new friends and join in on a lot of fun-filled programs and activities. Please note after Pre-School Fun has concluded, Disney's Oceaneer Club will be open for Secured Programming for ages 3-12.

Youth Activities Open House

Open House is an opportunity for all to come and participate in a variety of exciting activities and free time in the Oceaneer Club, Oceaneer Lab, Edge and Vibe throughout the cruise. During these times secured programming will still be offered in the other venue for those looking to check their children into care.

Youth Activities Venue Tour

Come and take a tour of Disney's Oceaneer Club and Disney's Oceaneer Lab. This informative tour will give you the information you need to know about our exciting spaces and activities offered for children ages 3-12. Please see your Personal Navigator or the Navigator App for times.



3 - 12 years old

MICKEY'S PUZZLE PLAYTIME

Come and play with Mickey & friends as they share their favorite games, puzzles and dances!

TOY STORY BOOT CAMP

Join Corporal Green in our own version of boot camp as we learn how to have fun - The Toy Story way!

JEDI TRAINING: EXPERIENCE THE FORCE

Become one with the Force as you take your first step into a larger world.



3 - 12 years old

SUPER SLOPPY SCIENCE

Join Professor Make-O-Mess in some of the most extreme experiments you will ever see in the world of Super Sloppy Science!

PISTON CUP

It's Dinoco time and you're part of the pit crew! Design your own race car and see if you've got what it takes to end up in the winner's circle!

GET THE HOOK

A villainous villain has stolen Captain Hook's prized golden hook. Become a member of the Top Deck Detective Agency and help solve the clues to retrieve Hook's hook.

STITCH'S ADVENTURE SQUAD

Stitch, everyone's favorite alien, is making an appearance to share some of his mischievous games and activities.



11 - 14 years old

HEROES VS. VILLAINS

Join your favorite hero or villain team on a series of activities that will take place throughout the cruise.

THAT'S HILARIOUS

Ever wanted to show off your comedy skills? Then be a part of the cast for the crazy improv show "That's Hilarious" and put on a live show for your friends.



14 - 17 years old

THE DOWNLOAD

Come up to Vibe and help plan all the fun activities you will be doing this cruise with your new friends!

GOTCHA

You will try to eliminate your victim by various methods collecting points throughout the day, last person standing with the most points wins.

BUENA VISTA THEATRE

Deck 4 & 5, Midship

FEATURE MOVIES THIS VOYAGE

MONDAY - PORT CANAVERAL, FLORIDA

5:30 pm PG Ralph Breaks the Internet
8:15 pm PG Ralph Breaks the Internet
10:45 pm PG Ralph Breaks the Internet



TUESDAY - DAY AT SEA

8:30 am PG Family Movie Fun Time: The Incredibles 2 Open Captioning
12:15 pm PG Ralph Breaks the Internet
2:45 pm PG Christopher Robin
5:30 pm PG The Nutcracker and the Four Realms
8:15 pm PG The Nutcracker and the Four Realms
10:45 pm PG The Incredibles 2

WEDNESDAY - NASSAU, BAHAMAS

10:00 am PG Christopher Robin
12:15 pm PG The Nutcracker and the Four Realms
2:30 pm PG Ralph Breaks the Internet
5:15 pm PG Mary Poppins Returns
8:15 pm PG Mary Poppins Returns
11:15 pm PG Mary Poppins Returns

THURSDAY - DISNEY CASTAWAY CAY

10:00 am PG Family Movie Fun Time: Ralph Breaks the Internet Open Captioning
12:30 pm PG Christopher Robin
2:45 pm PG Mary Poppins Returns Open Captioning
5:30 pm PG Ralph Breaks the Internet
8:15 pm PG Ralph Breaks the Internet
10:45 pm PG Mary Poppins Returns

Subject to change.

FEATURED VARIETY ACT THIS VOYAGE



FLIGHT CREW JUMP ROPE

Members of Flight Crew have been featured in America's Got Talent, Cirque Dreams, America's Best Dance Crew and as World Jump Roping Champions! Not just a jump rope show, the amazing Flight Crew uses high energy stunts, LED ropes and dynamic choreography to present a show that leaps from the stage into your memories! Look for this talented group for family Jump Rope workshops where they will show you the tricks of the trade. Jumpin' FUN for the entire Family!



MORE TO ENJOY ONBOARD



NEW FALL 2020 ITINERARIES

New Spring 2020 Itineraries announced! Experience sailings to the Caribbean, the Bahamas, Mexico, and Hawaii with your family! And for the very first time, sail from New Orleans to the Caribbean or Bahamas on Disney Wonder. Visit Disney Vacation Planning, Deck 4, Midship for more information. Disney Vacation Planning tends to get busy on the last day of sailing. Don't miss the opportunity to plan your next Disney vacation.



DISNEY VACATION CLUB® MEMBER CELEBRATION

Join us as we welcome you onboard with a fun, interactive event where you can catch the latest updates at Disney Vacation Club! Please see a Disney Vacation Club Cast Member on Deck 4, Midship or call 7-2805 from your stateroom phone for more information.

PORT SHOPPING INFORMATION

Join your Port Shopping Guide Richard on Sea Day at 11:00 am in the Buena Vista Theatre to learn about the incredible shopping ashore in Nassau! Over \$1,000 in give-a-ways and prizes! Arrive early for free gifts and more! Collect your free ship charm from the Port Shopping Desk, Deck 5, Midship, today from 6:30 pm - 8:30 pm.

SHOPPING
Ashore

Connect@Sea

FREE INTERNET EMBARKATION DAY SPECIAL

Sign up for a free 50 MB Internet package today and enjoy it throughout the cruise! This offer is only available from noon to midnight on the day your cruise begins. On your wireless device, simply find the "DCL-Guest" Wi-Fi Network, go to www.dclguest.com to create an account, and get your free 50 MB of data to start sharing your memories even before you leave port! If you have any questions, ask our Connect@Sea Expert located at Deck 4, Midship. No purchase necessary. The free 50 MB package can only be used for the duration of the cruise. Only one free package per stateroom, but everyone can share it. Unused data from a package will not be reimbursed and it is non-transferable between voyages or ships.

RELIGIOUS SERVICES

Groups who need a location to practice their faith may contact Guest Services for availability information.

FREE ON DEMAND TV

Watch Disney movies, Hollywood features, ABC shows, and even captioned content, plus much more "On Demand" for FREE in the comfort of your stateroom! Bookmark your movie and come back to watch it later. Press MENU on your stateroom television remote control and follow the prompts.

SENSES SPA & SALON



DECK 11, FORWARD

Extension 7-1465

RAINFOREST

Come enjoy our serenity lounge, with heated chairs, dry sauna, aromatherapy steam rooms and rainfall, misting showers.

\$144 for Couples pass, \$99 for Singles pass

IONITHERME

Would you like to lose 3-8 inches? Speed up your metabolism, reduce fluid retention and the appearance of cellulite? Firm your muscle tone? If so, this is the best treatment for you! \$155/session.

ONBOARD ACUPUNCTURE

Naturally effective for pain, arthritis, sea sickness, stress, digestion, weight loss, and much more.

\$150/session or \$360/3 sessions.

THE PERFECT DAY

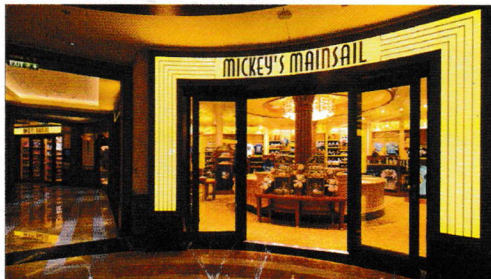
The Perfect Day: 50 minute full body massage, Foot & Ankle Massage, Scalp Massage & Hydrating Facial. 75 minute treatment - \$169.

REJUVENATION SPA CONSULTATIONS

Ready to enhance your natural beauty? Book your free Facial Rejuvenation consultation with our Rejuvenation Doctor at the Senses Spa.

AN 18% AUTO GRATUITY IS ADDED TO ALL SENSES SPA SERVICES.

MERCHANDISE SHOPPING



DECK 3, FORWARD

BIBBIDI BOBBIDI BOUTIQUE

A makeover fit for a princess! Fairy Godmothers-in-Training are ready with magic and pixie dust to give your Prince and Princess the transformation of a lifetime.

Make your reservations by visiting Bibbidi Bobbidi Boutique, Deck 5, Midship or dialing extension 7-9438. Limited space available.

STYLISH WATCHES ONBOARD

Whether you need a tool for timekeeping or a fun fashion accessory, visit White Caps and browse a wide selection of stylish watches available. Popular brands include Breitling and Hublot. Deck 3, Forward

THE DISNEY PARKS COLLECTION BY PANDORA JEWELRY

The Disney Parks Collection by PANDORA Jewelry features hand-finished .925 sterling silver and 14K gold charms inspired by some of Disney's most beloved characters. Visit White Caps on Deck 3, Forward, where you'll find a specially designed sterling silver charm featuring a Disney Cruise Line ship.

SHUTTERS PHOTO GALLERY



DECK 4, MIDSHIP

OUR CRUISE PHOTOS

View your embarkation photos starting at 7:00pm at Shutter's, Deck 4, Midship and enter our raffle for a chance to win a 10 Digital Images Photo USB worth \$149.95. Raffle entries are accepted until 10:30 pm tonight.

*Terms and conditions apply.

Visit Shutter's on Deck 4, Midship for all your photographic needs, from digital cameras, batteries, binoculars and accessories.

Ask a friendly photographer about Our Cruise Photos and the incredible value of an unlimited digital photo package, which includes all of your stateroom's photos.

PROFESSIONAL PORTRAITS

Professional portraits will be available during your cruise in the Lobby Atrium, Deck 3, Midship. Please refer to your daily personal Navigator for available hours.

PHOTOBOOK

Visit Shutter's today and turn your magical vacation memories into an impressive keepsake, a personal one-of-a-kind Photo Book. Fill every page with memories of your cruise vacation.

PHOTOS ARE AVAILABLE FOR VIEWING ON OUR INTERACTIVE PHOTO KIOSKS APPROXIMATELY FIVE HOURS AFTER BEING TAKEN AND ARE ONLY AVAILABLE FOR PURCHASE DURING THIS CRUISE.

IMPORTANT INFORMATION

Security Notice/Unaccompanied Minor Ashore
All Guests (including children) who wish to disembark or embark the ship are required to present their Key to the World card at the gangway. A photo ID is also required for those Guests who are 18 years of age or older. Guests under the age of 18 are required to have a Parent, Guardian or other responsible adult complete the "Traveling with Minors" section of "My Online Check-In" prior to sailing or sign an authorization form at the Guest Services Desk if they wish to go ashore unaccompanied or with any adult from another stateroom.

Inclement Weather
For the safety of all Guests, outdoor events may be changed due to unforeseen weather conditions.

Insect Repellent Advisory
The Centers for Disease Control and Prevention recommends wearing long-sleeved shirts and pants along with insect repellent to protect against mosquito bites and related illnesses when going ashore. Complimentary insect repellent is available on the pier as you exit the ship. Insect repellent is also available for purchase in White Caps. When using both sunscreen and insect repellent, use sunscreen first and apply insect repellent on top of sunscreen.

Corridor Quiet Hours
As a courtesy to all our Guests, please recognize quiet hallway hours from 10:00 pm til 8:00 am.

No Reserved Seats Policy
As a courtesy to all our Guests, we kindly advise that the saving of seats is not permitted in the Walt Disney Theatre, and the saving of the sun loungers is not permitted on Deck 11, 12, and 13. Items left unattended will be returned to lost and found at Guest Services, Deck 3 Midship.

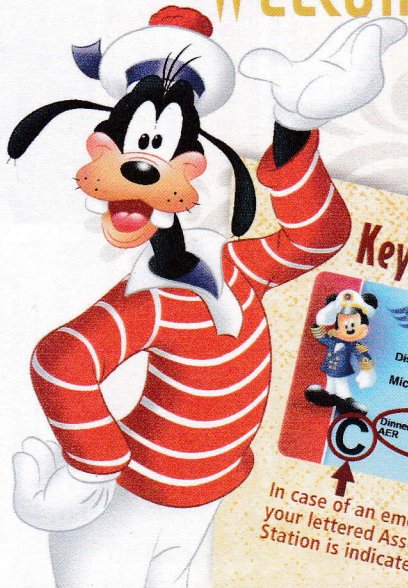
Cold and Flu Reminder
Please wash hands frequently and thoroughly, particularly before meals. Contact the Health Center by dialing 7-1927, should anyone in your party become ill.

Smoking
For the comfort of our Guests, the following areas are designated as smoking areas:
*Deck 13, forward, port side by Currents
*Deck 12, aft, port side outdoor area that is accessible through the Meridian Lounge
*Deck 4, aft, port side from 6:00 pm to 6:00 am only (all of Deck 4 is non-smoking from 6:00 am to 6:00 pm)
Smoking is prohibited inside all Guest staterooms and on stateroom verandahs. Guests found smoking in their staterooms or on their verandahs will be charged a \$250 stateroom recovery fee. Electronic cigarettes may only be used in designated smoking areas.

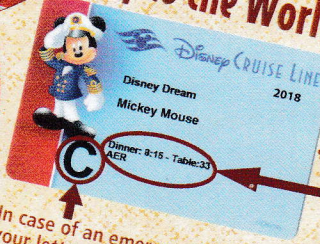
Walt Disney Theatre
Theatrical performances may use artificial fog, strobe lights, pyrotechnics and other special effects. For the safety of our performers and the comfort of those around you, the use of any photography, video recording device or any electronic equipment is prohibited.

Verandah Safety
Please do not leave any personal items on your verandah that may be blown overboard or present a fire hazard if left unattended. Do not throw anything over the ship's side. Guests should not sit, lean or climb on the railing or leave children unattended on the verandah. Do not open the verandah and stateroom doors simultaneously as this may create a wind effect and could cause the doors to slam unexpectedly.

WELCOME ABOARD!



Key to the World Card Information



In case of an emergency, your lettered Assembly Station is indicated here.

- ♥ Dinner seatings are 5:45 pm or 8:15 pm.
- ♥ Your table number for the cruise is located after your dinner seating.
- ♥ Dinner locations and rotation are indicated by letters under your dinner time.
 A - Animator's Palate, Deck 3, Aft
 E - Enchanted Garden, Deck 2, Midship
 R - Royal Palace, Deck 3, Midship

SAILING AWAY

It's time to go Sailing Away! Join Mickey and Minnie and the rest of the gang as they welcome you aboard the Disney Dream.

Deck Stage, Deck 11, Midship, 4:30 pm

Bahama Mama (Alcoholic)
Passion Cream Freeze (Non-Alcoholic)
DRINK OF THE DAY

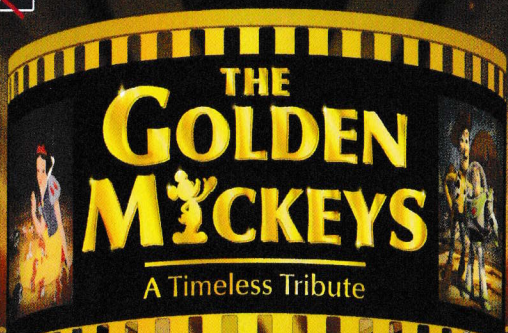
Afternoon	1:45	2:00	2:15	2:30	2:45	3:00	3:15	3:30	3:45	4:00	4:15	4:30	4:45	5:00	5:15	5:30	5:45	6:00	6:15	6:30	6:45						
FUNNEL VISION		Lilo & Stitch (PG) Open Captioning Funnel Vision						Mandatory Guest Assembly Drill 4:00 pm All ship services will be suspended during this time. Please refer to the posted drill instructions prior to heading to your Assembly Station. You will not need your life jacket for the Guest Assembly Drill. Your Assembly Station is indicated on your Key To The World card.											Tangled (PG) Open Captioning Funnel Vision								
BUENA VISTA THEATRE																										Ralph Breaks the Internet (PG) Duration: 1 Hour 54 Minutes	
CHARACTERS																					Mickey Mouse Balcony	Goofy Lobby Atrium (V)					Minnie Mouse Lobby Atrium (H)
FUN FOR ALL AGES		Walking Ship Tour Preludes		Disney's Vacation Club Members Celebration D Lounge		Walking Ship Tour Preludes	Magic PlayFloor									Deck 11 Stage					Soothing Sounds with Daria & Roberto Lobby Atrium	Red Carpet Arrivals					THE GOLDEN MICKEYS A Timeless Tribute Walt Disney Theatre
ADULTS		Acupuncture Demonstration Senses Fitness Center				Champagne Tasting (21+) Pink: Wine and Champagne Bar		Spa Raffle (18+) Senses Fitness Center									Cruisin' Solo Gathering Cove Cafe	Complimentary Footprint Analysis Senses Spa & Salon									
VIBE 14-17 YEARS OLD		Youth Activities Open House															Youth Activities Open House						Open for Teens	Video Game Challenge			
EDGE 11-14 YEARS OLD		Youth Activities Open House															Youth Activities Open House						Open for Tweens	4 Square Competition			
OCEANEER LAB 3-12 YEARS OLD		Wacky Relays	Youth Activities Open House	Magic PlayFloor																			Bingo	GAGA Ball	Meet Your Counselors	Ice Breakers	
OCEANEER CLUB 3-12 YEARS OLD		Magic PlayFloor	Dance Party	Youth Activities Tour	Open House												Youth Activities Open House							Memory Wall	Star Wars		



Evening	7:00	7:15	7:30	7:45	8:00	8:15	8:30	8:45	9:00	9:15	9:30	9:45	10:00	10:15	10:30	10:45	11:00	11:15	11:30	11:45	12:00				
FUNNEL VISION	Tarzan (G) Open Captioning Funnel Vision																							NFL Football: Denver Broncos vs. Oakland Raiders Funnel Vision (Subject to Satellite Reception & Availability)	
BUENA VISTA THEATRE																								Ralph Breaks the Internet (PG) Duration: 1 Hour 54 Minutes	
CHARACTERS							Rapunzel Lobby Atrium (V)																		
FUN FOR ALL AGES		Family Dance Party Lobby Atrium	Disney's Vacation Club Members Celebration D Lounge				Donald Lobby Atrium (H)	Red Carpet Arrivals	THE GOLDEN MICKEYS A Timeless Tribute Walt Disney Theatre		Acoustic Sounds Lobby Atrium			Lobby Atrium											Catholic Mass Walt Disney Theatre
ADULTS			Bingo Pre-Sales Evolution	Free Card \$500 Big X Jackpot BINGO Evolution																				NFL Football: Denver Broncos vs. Oakland Raiders Pub 687 (Subject to Satellite Reception & Availability)	
VIBE 14-17 YEARS OLD		Cards Tournament																						Cruise Staff DJ Evolution	
EDGE 11-14 YEARS OLD		Video Game Challenge																						Snippets Evolution 1820 Society: Stir it, Blend it, Taste it. Cove Cafe	
OCEANEER LAB 3-12 YEARS OLD		Game Challenge		Get the Hook			Pluto's Pajama Party																	Cruise Staff DJ District Lounge	
OCEANEER CLUB 3-12 YEARS OLD		Aloha Luau					Magic PlayFloor	Toy Story Boot Camp																Daring Jump Rope Hinkstrol FLIGHT CREW Evolution	
																								Silent DJ Party Evolution	
																								Cruise Staff DJ District Lounge	
																								The Download	
																								Heroes and Villains	
																								Gotcha Registration	
																								Ice Breakers	
																								Taking it to The Edge	
																								Ice Breakers	
																								Dodgeball	
																								4 Square Competition	
																								Disney Animation: Creating a Character	
																								4 Square Competition	
																								Disney Infinity Challenge	
																								Star Wars Galaxy Designers	

YOUTH ACTIVITIES OPEN HOUSE
A non-secured program with activities for families, adults and children to enjoy together.





WALT DISNEY THEATRE
DECK 3 & 4, FORWARD
6:15 pm & 8:30 pm

As a courtesy to all Guests, we kindly advise that the saving of seats is **not** permitted in the Walt Disney Theatre.

Assistance available at the entrance to the Walt Disney Theatre 30 minutes prior to show time.

Character Meet and Greet Experience Reservation

Port Adventures Desk, Deck 5, Midship - 11:45 am - 2:00 pm
The following appearances require a reservation. Space is limited

For Guests who did not book online, a limited number of reservations are available for:

- Princess Gathering
- Frozen Meet and Greet

Character Appearances

SAILING AWAY

Deck 11 Stage - 4:30 pm

MICKEY MOUSE

Balcony - 5:15 pm

MINNIE MOUSE

Lobby Atrium (H) - 5:30 pm

GOOFY

Lobby Atrium (V) - 5:45 pm

MICKEY'S TREE LIGHTING MAGIC

Lobby Atrium - 7:30 pm

CINDERELLA

Lobby Atrium (V) - 7:45 pm

DONALD DUCK

Lobby Atrium (H) - 7:45 pm

RAPUNZEL

Lobby Atrium (V) - 8:15 pm

SANTA'S WINTER WONDERLAND BALL

Lobby Atrium - 10:15 pm



(H) Hallway - (S) Starboard Side - (P) Port Side - (V) Vestibule

For details of daily Disney character appearances, refer to the character line on your Navigator Grid, or the digital character board in the Lobby Atrium.

Lines close 15 minutes after advertised start time.

SHIP DIRECTORY

YOUTH ACTIVITIES

DISNEY'S OCEANEER CLUB	DECK 5, MID	12:00 PM - 3:30 PM	4:30 PM - 12:00 AM
DISNEY'S OCEANEER LAB	DECK 5, MID	12:00 PM - 3:30 PM	4:30 PM - 12:00 AM
EDGE	DECK 13, MID	12:00 PM - 3:30 PM	4:30 PM - 1:00 AM
IT'S A SMALL WORLD NURSERY	DECK 5, MID	12:00 PM - 3:30 PM	4:30 PM - 12:00 AM
VIBE	DECK 4, FWD	12:00 PM - 3:30 PM	4:30 PM - 1:00 AM

POOLS & MORE

* Children under 12 must have adult supervision in pool areas.

AQUADUCK	DECK 12, AFT	12:00 PM - 3:00 PM	4:30 PM - 10:00 PM
DONALD'S POOL	DECK 11, MID	12:00 PM - 3:15 PM	6:00 PM - 10:00 PM
FUNNEL PUDDLE	DECK 12, FWD	12:00 PM - 6:00 PM	
MICKEY'S POOL	DECK 11, MID	12:00 PM - 3:15 PM	4:30 PM - 10:00 PM
MICKEY'S SLIDE	DECK 11, MID	12:00 PM - 3:00 PM	4:30 PM - 6:00 PM
NEMO'S REEF	DECK 11, MID	12:00 PM - 3:15 PM	4:30 PM - 6:00 PM
QUIET COVE POOL (18+)	DECK 11, FWD	12:00 PM - 11:00 PM	
SATELLITE FALLS (18+)	DECK 13, FWD	12:00 PM - 9:00 PM	

Please note, "selfie sticks" are not permitted in any aquatic area.

Complimentary pool vests are available for children to use in the pools onboard.

Located on the pool deck.

RECREATION

GOLF/SPORTS SIMULATOR	DECK 13, AFT	12:00 PM - 3:15 PM	4:30 PM - 6:00 PM
GOOFY GOLF	DECK 13, AFT	5:30 PM - 10:00 PM	
GOOFY'S SPORTS DECK	DECK 13, AFT	12:00 PM - 6:00 PM	
MIDSHIP DETECTIVE AGENCY	DECK 2 & 5, MID	11:00 AM - 11:00 PM	
PORT ADVENTURES DESK	DECK 5, MID	12:00 PM - 3:30 PM	4:30 PM - 8:30 PM
SENSES FITNESS CENTER (18+)	DECK 11, FWD	12:00 PM - 10:00 PM	

GENERAL INFORMATION

BUENA VISTA THEATRE	DECK 4 & 5, MID	SHOWTIMES
CONNECT@SEA DESK	DECK 4, MID	1:00 PM - 3:30 PM
		7:00 PM - 10:00 PM
DISNEY VACATION CLUB	DECK 4, MID	5:30 PM - 10:00 PM
DISNEY VACATION PLANNING	DECK 4, MID	5:00 PM - 10:00 PM
GUEST SERVICES	DECK 3, MID	24 HOURS
HAIRBRAIDING	DECK 11, MID	5:00 PM - 10:00 PM
MEDICAL HEALTH CENTER	DECK 1, FWD	4:30 PM - 7:00 PM
PORT SHOPPING DESK	DECK 5, MID	6:30 PM - 8:30 PM
PRELUDES	DECK 3, FWD	5:45 PM - 9:00 PM
SENSES SPA AND SALON	DECK 11, FWD	12:00 PM - 10:00 PM
SHUTTERS PHOTO GALLERY	DECK 4, MID	7:00 PM - 10:30 PM
WALT DISNEY THEATRE	DECK 3 & 4, FWD	SHOWTIMES

SHOPPING

BIBBIDI BOBBIDI BOUTIQUE	DECK 5, MID	12:00 PM - 3:00 PM	5:00 PM - 9:00 PM
MICKEY'S MAINSAIL	DECK 3, FWD	5:45 PM - 11:00 PM	
SEA TREASURES	DECK 3, FWD	5:45 PM - 11:00 PM	
VISTA GALLERY	DECK 2, MID		
WHITE CAPS	DECK 3, FWD	5:45 PM - 11:00 PM	
WHOZITS & WHATZITS	DECK 11, MID	12:00 PM - 3:15 PM	4:30 PM - 6:00 PM
		9:00 PM - 11:00 PM	

DUE TO PORT REGULATIONS, WHEN THE SHIP IS DOCKED, THE STORES MUST REMAIN CLOSED.

EVENING ATTIRE

Cruise Casual

WEATHER FORECAST

Today: Partly Cloudy
High: 72°/22°C

DINING & LOUNGES

LUNCH

CABANAS	DECK 11, AFT	11:45 AM - 3:00 PM
ANIMATOR'S PALATE	DECK 3, AFT	11:45 AM - 2:00 PM
FILLMORE'S FAVORITES	DECK 11, MID	12:00 PM - 3:30 PM
		4:30 PM - 6:00 PM
LUIGI'S PIZZA	DECK 11, MID	12:00 PM - 3:30 PM
		4:30 PM - 6:00 PM
TOW MATER'S GRILL	DECK 11, MID	12:00 PM - 3:30 PM
		4:30 PM - 6:00 PM

DINNER

ANIMATOR'S PALATE	DECK 3, AFT	5:45 PM & 8:15 PM
ENCHANTED GARDEN	DECK 2, MID	5:45 PM & 8:15 PM
PALO (18+) (RESERVATIONS REQ. & NIM. FEE APPLIES)	DECK 12, AFT	6:00 PM - 8:30 PM
REMY (18+) (RESERVATIONS REQ. & NIM. FEE APPLIES)	DECK 12, AFT	6:00 PM - 8:30 PM
ROYAL PALACE	DECK 3, MID	5:45 PM & 8:15 PM
TOW MATER'S GRILL	DECK 11, MID	6:00 PM - 11:00 PM

LATE NIGHT SNACKS

LUIGI'S PIZZA	DECK 11, MID	9:30 PM - 12:30 AM
THE DISTRICT	DECK 4, AFT	10:45 PM - 11:45 PM

ADDED FEATURES

BEVERAGE STATION	DECK 11, MID	24 HOURS
EYE SCREAM	DECK 11, MID	11:45 AM - 3:30 PM
		4:30 PM - 11:30 PM
ROOM SERVICE	DIAL 0	24 HOURS
VANELLOPE'S SWEETS AND TREATS	DECK 11, AFT	11:30 AM - 3:30 PM
		4:30 PM - 10:30 PM

ENTERTAINMENT - LOUNGES - BARS

Adults must be 21 and older to consume alcoholic beverages.

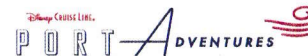
BON VOYAGE	DECK 3, MID	11:30 AM - 11:00 PM
COVE BAR (18+)	DECK 11, FWD	11:30 AM - 10:30 PM
COVE CAFE (18+)	DECK 11, FWD	11:30 AM - 12:00 AM
CURRENTS (18+)	DECK 13, FWD	11:30 AM - 12:00 AM
D LOUNGE	DECK 4, MID	SHOWTIMES
DISTRICT LOUNGE (18+ AFTER 9:00 PM)	DECK 4, AFT	11:30 AM - 2:00 AM
EVOLUTION (18+ AFTER 9:00 PM)	DECK 4, AFT	9:30 PM - 12:00 AM
FROZONE TREATS	DECK 11, MID	11:30 AM - 6:00 PM
MERIDIAN (18+)	DECK 12, AFT	5:00 PM - 12:00 AM
OUTLOOK (18+)	DECK 14, MID	
PINK: WINE AND CHAMPAGNE BAR (18+)	DECK 4, AFT	5:00 PM - 12:00 AM
PUB 687 (18+ AFTER 9:00 PM)	DECK 4, AFT	11:30 AM - 12:00 AM
SENSES JUICE BAR	DECK 11, FWD	11:30 AM - 6:00 PM
SKYLINE (18+)	DECK 4, AFT	5:00 PM - 12:00 AM
VISTA CAFE	DECK 4, MID	11:30 AM - 10:30 PM
WAVES	DECK 12, AFT	11:30 AM - 6:00 PM

Public Health Advisory: Consuming raw or under-cooked meats, poultry, seafood, shellfish, or eggs may increase your risk for food borne illness, especially if you have certain medical condition.



MIDSHIP DETECTIVE AGENCY

Use your detective know-how and our special detective "badge" to search the ship and catch your criminal! Deck 2 & 5, Midship Kiosks.



Visit the Port Adventures Desk, Deck 5, Midship, for bookings & questions.

IMPORTANT NUMBERS

Fire/Security: 7-3001
Medical Emergency: 7-3000
Health Center: 7-1927