

VOYAGE NAVIGATOR

SATURDAY
NOVEMBER 3, 2018

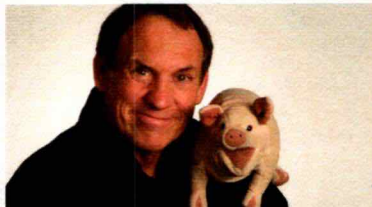
TO

SATURDAY
NOVEMBER 10, 2018

CRUISE HIGHLIGHTS

SATURDAY

PORT CANAVERAL
Port Departure: 5:00 pm
All Aboard: 3:45 pm
Attire: Cruise Casual



SHOWTIME: TAYLOR MASON
Walt Disney Theatre
6:15 pm & 8:30 pm

SUNDAY

DAY AT SEA
Attire: Formal



DISNEY WISHES
Walt Disney Theatre
6:15 pm & 8:30 pm

MONDAY

DAY AT SEA
Attire: Cruise Casual



DISNEY'S ALADDIN
Walt Disney Theatre
1:45 pm, 6:15 pm & 8:30 pm

TUESDAY

ROAD TOWN (TORTOLA)
All Ashore: 7:30 am
All Aboard: 5:45 pm
Attire: Pirate or Cruise Casual



THE NUTCRACKER AND THE FOUR REALMS (PG)
Walt Disney Theatre
5:30 pm & 8:15 pm

WEDNESDAY

ST. THOMAS
All Ashore: 7:45 am
All Aboard: 4:00 pm
Attire: Cruise Casual



SHOWTIME: NICK DIFFATTE
Walt Disney Theatre
6:15 pm & 8:30 pm

THURSDAY

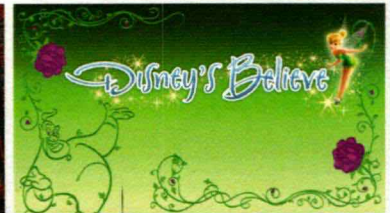
DAY AT SEA
Attire: Semi Formal



SHOWTIME: THE GREAT DUBOIS
Walt Disney Theatre
6:15 pm & 8:30 pm

FRIDAY

DISNEY CASTAWAY CAY
All Ashore: 9:30 am
All Aboard: 4:45 pm
Attire: Cruise Casual



DISNEY'S BELIEVE
Walt Disney Theatre
6:15 pm & 8:30 pm

Subject to change.

WELCOME ABOARD!

YOUR STATEROOM & LUGGAGE

Staterooms will be ready at 1:30 pm. To allow your Stateroom Host/ess time to prepare your room, please do not remove the blue stanchion straps. Stateroom hosts will deliver luggage throughout the day until 5:30 pm.

STATEROOMS WITH BUNK BEDS

Bunk beds are recessed into the ceiling and will be prepared during evening turndown service by your Stateroom Host/ess.

STATEROOM SAFE

Each stateroom is equipped with a secured storage safe. Instructions for use are located on the safe.

TO CHANGE DINING ASSIGNMENT

Requests for different seating times will be taken today:
12:30 pm - 3:00 pm; Book in Enchanted Garden, Deck 2, Midship
3:00 pm - 5:00 pm; please dial 7-1831, 7-1832, or 7-1833

REMY & PALO DINING RESERVATIONS

Reservations are required and will be taken on a first come basis today:

- 12:30 pm - 3:00 pm Enchanted Garden, Palo & Remy.
- 3:00 pm - 5:00 pm Please leave a voice mail at 7-9735 for Palo or 7-9734 for Remy.

Please dial 7-9734 for Remy or 7-9735 for Palo for more information. Cover charge applicable.

Adult Exclusive Dining Opportunity! Guests are invited to make 2 dinner reservations at our two adult-exclusive restaurants, Palo & Remy. This includes one reservation on embarkation evening and one more on another night of the cruise. Reservations are subject to availability and a specialty dining charge will apply.

DINNER

5:45 pm - First seating 8:15 pm - Second seating

Please check your Key To The World Card or dining tickets for details of your dining rotation, and bring them to your specific dining location. There is no need to wait in line prior to dinner. Dining Rooms open at designated seating times and your table is reserved each night of your cruise.

A = Animator's Palate, Deck 3, Aft E = Enchanted Garden, Deck 2, Midship R = Royal Court, Deck 3, Midship

DOWNLOAD THE DISNEY CRUISE LINE NAVIGATOR APP BEFORE YOU SAIL AWAY

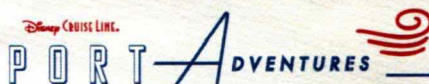
Explore all that's going on aboard your Disney cruise.



Tap the Disney Cruise Line logo to view your Personal Itinerary

Send messages to your friends and family on the ship.

Your Personal Itinerary includes all activities booked at home and onboard



Create the most memorable experiences during your Disney Cruise Line vacation with Port Adventures! Our Port Adventures are designed for you to see the best our ports have to offer. Stop by the Port Adventures Desk, Deck 5, Midship where our friendly team will be happy to assist you plan your adventure!

There is an adventure for everyone on your Disney Fantasy® vacation.

IMPORTANT NUMBERS

Fire/Security: 7-3001

Medical Emergency: 7-3000

Health Center: 7-1927

ADULT ACTIVITY HIGHLIGHTS



1820 SOCIETY (GUESTS 18-20 YEARS ONLY)

1820 Society is an exclusive option for young adult guests. Come meet fellow guests and learn about the excellent activities that the Fantasy offers to create the perfect cruise experience.



80'S MUSIC CHALLENGE

"Moon Walk" back to the 80's as we put your musical knowledge of the decade to the test.

ART OF THE THEME SHOW SHIP TOUR

Join us for a guided tour highlighting the design, Imagineering and artistry of the ship. This tour is reserved for Guests 18 and over.

CRUISIN' SOLO GATHERING

Single, single parent or just traveling alone? Join your Cruise Staff for an informal gathering.



MATCH YOUR MATE

It's time to play everyone's favorite couples game show, Match Your Mate!



Senses Spa & Salon has a variety of seminars and fitness classes available throughout the cruise. Pamper yourself with therapeutic spa treatments of heat, steam, rain and water in luxurious and tranquil private rooms. Deck 11, Forward.

BEVERAGE SEMINARS

Your Beverage team has a host of tastings and seminars to entertain and educate you. Stop by La Piazza, Deck 4, Aft to pre-book these experiences (nominal fee applies).

Mixology - Stem to Stern Wine Tasting - Martini Tasting - Champagne Tasting - Beer Tasting - Cognac Tasting - Whisky Tasting - Amari Tasting - Tequila & Margarita Tasting - Chocolate & Liquor Tasting - Rum Tasting

FEATURED VARIETY ACT THIS VOYAGE



THE VENTRILOQUISM & COMEDY OF TAYLOR MASON

Combining music, ventriloquism, comedy and audience participation sounds like a musical theater production, but it's really one man! Taylor Mason makes people of all ages laugh and laugh hard. His quick wit, flawless delivery and polished material make him a hit with Guests of all ages.



THE COMEDY AND CONTORTIONISM OF JONATHAN BURNS

Born with the gifts of flexibility, curiosity, and goofiness, Jonathan Burns now uses these unique talents to astonish audiences around the globe. Over the course of his career, Jonathan has appeared on The Late Show with David Letterman, The Jay Leno Show, The Late Late Show with James Corden, and was named "Variety Artist of the Year" by Campus Activities Magazine, TWICE!



THE COMEDY & MAGIC OF NICK DIFFATTE

Nick Diffatte is quickly becoming one of the most-talked about comedic magicians with a seamless blend of dry humor, quick wit, and incredible skill. He has performed at Magic Castle, The Late Late Show, and had a long-term residency on the Las Vegas strip.



THE PHYSICAL COMEDY OF THE GREAT DUBOIS

The Great DuBois is a fast-paced, all ages, variety show showcasing incredible feats of juggling, hula hoops, unicycle, aerial, circus stunts, contortion, magic, and audience interaction all wrapped in a blanket of comedy. Viktoria Grimmy is an award winning fifth-generation circus performer, who created circus acts for the Tony Award winning "PIPPIN", has performed with the Big Apple Circus, Ringling Brothers, the Britney Spears Circus Tour, and was featured in the film "Burlesque". Performing together as The Great DuBois, they have created multiple shows, tailor made for any occasion indoor and out and sure to amaze every crowd.

CLUB DJ THIS VOYAGE



CLUB DJ PETE DOWN

DJ Pete Down is recognized and credited as one of the World's most versatile and unique DJs / Producers. He brings a flare of stylish mixes and club anthems to the dancefloor. Pete Down has been spinning professionally for over a decade. His creativity and passion for music has captivated audiences every where he goes as well as the industry's top socialites.

FUN FOR ALL AGES HIGHLIGHTS



ANYONE CAN COOK

Every Chef has a specialty, and ours is no exception. Get a taste of perfection with each day's recipe.



A PIRATES LIFE FOR ME

Calling all Pirates, we be! If ye have an adventurous spirit or pirate savvy, come spin the "Wheel of Destiny" for a treasure trove of fun be ripe for the takin' in this action packed pirate game show.



BUCCANEER BLAST FIREWORKS

What's a pirate party without some fireworks to remind the other ships who be ruling the oceans blue?



CASTAWAY CAY 5K (10+)

Sign up today for the Castaway Cay 5K! Please visit the Port Adventures Desk or the Guest Services Desk to register at anytime prior to our arrival at Disney Castaway Cay. Please note that runners must be 10 years of age or older to participate.



DISNEY JUNIOR PIRATE & PRINCESS DANCE PARTY

Calling all Pirates and Princesses! Come join us for a family dance party featuring music and fun activities from Jake & the Neverland Pirates and Sofia the First. Whether you favor tiaras or treasure chests, there's something for you at our Disney Junior Pirate & Princess Dance Party!



DISNEY VACATION CLUB GROUP PREVIEW

Want to learn more about taking magical vacations year after year? Please see a Disney Vacation Club Cast Member on Deck 4, Midship, or call 7-2805 from your stateroom phone for more information about our interactive group presentation.



FAMILY TALENT SHOW

Let your family take center stage and strut their stuff. Everyone has a talent, it's time to show off yours! Pre-register at Guest Services.



JACK-JACK'S INCREDIBLE DIAPER DASH

Calling all baby cruisers! It's time to take to the mat to see who's the fastest crawler of the seven seas! Register your baby 15 minutes prior to the big race.



JACKPOT BINGO

CASH prizes and raffle prizes to be won in our family friendly Bingo sessions with your Cruise Staff. Those under the age of 18 must be accompanied by an adult to play.



JAKE THE NEVERLAND PIRATE

A'Hoy there mates, join us for an adventure in D Lounge with Jake and the Neverland Pirates.



MICKEY 200

Don't eat your vegetables... race them in this wild and wacky charge to the finish line. May the best veggie win! (Limited Availability)



MICKEY'S PIRATES IN THE CARIBBEAN

It's a Pirate Celebration, me hearties! Come experience all the pirate fun alongside Captain Mickey Mouse and his famous pirate crew. Play, dance and acquire all the pirate skills needed to become an official member of Mickey's Pirate Crew! (Weather Permitting)



MIRROR MIRROR

Join the Magic Mirror in the fairest game show of them all, Mirror, Mirror. There's trivia, singing and even a relay race. Hi Ho, Hi Ho, it's off to play we go!



SALUDOS AMIGOS FIESTA

Come see what Donald and his friends are up to this time. Bring the family out to this interactive dance party featuring fun Latin music! Your family will learn to salsa, merengue and just have a Latin good time!



SEA YA REAL SOON

Mickey and Minnie along with the rest of the Walt Disney Characters invite you to join them in the ship's atrium for Sea Ya Real Soon. You won't want to miss this very special farewell presentation.

YOUTH ACTIVITIES INFO & HIGHLIGHTS



Dine & Play

A convenience for families, during your dinner, our Youth Activities counselors will be available at 6:45 pm or 9:15 pm at the entrance of Royal Court and Enchanted Garden and at 7:00 pm or 9:30 pm at the Animator's Palate dining room to bring registered children to join the fun in the Youth Activities areas.

Pre-School Fun

Disney's Oceaneer Club is reserved for only those between 3-5 years of age. This is a time for them to become acclimated to Disney's Oceaneer Club, make new friends and join in on a lot of fun-filled programs and activities. Please note after Pre-School Fun has concluded, Disney's Oceaneer Club will be open for Secured Programming for ages 3-12.

Youth Activities Open House

Open House is an opportunity for all to come and participate in a variety of exciting activities and free time in the Oceaneer Club, Oceaneer Lab, Edge and Vibe throughout the cruise. During these times secured programming will still be offered in the other venue for those looking to check their children into care.



3 - 12 years old

DOCTOR STRANGE

Unravel the mysteries of the Mystic Arts from none other than Doctor Strange.

DOC MCSTUFFIN'S TOY HOSPITAL

Help Doc McStuffins diagnose and fix broken toys as you become a Jr. Toy Doctor at McStuffinsville Toy Hospital.

FORCE TRAINING

Learn the ways of the Force and take on the First Order.

JOIN THE LION GUARD

Harness your inner animal and find out if you have what it takes to join the Lion Guard!



3 - 12 years old

PLUTO'S PAJAMA PARTY

Bring the little ones in their pajamas but there will be anything but sleep when Pluto and friends host the ultimate slumber party!

GET THE HOOK

A villainous villain has stolen Captain Hook's prized golden hook. Become a member of the Top Deck Detective Agency and help solve the clues to retrieve Hook's hook.

PISTON CUP

It's Dinoco time and you're part of the pit crew! Design your own race car and see if you've got what it takes to end up in the winner's circle!

DREAM BIG, PRINCESS

Disney Princesses make their dreams come true. So can you! Join us as we find inspiration and motivation from everyone's favorite royalty and their friends. It's time to Dream Big!



11 - 14 years old

BRAINS AND BRAWNS

You will compete against each other to solve clues, take part in physical challenges, and reach the finish first.

A PIRATE'S LIFE FOR ME

Calling all Pirates, we be! If ye have an adventurous spirit or pirate savvy, come spin the "Wheel of Destiny" fer a treasure trove of fun be ripe for the takin' in this action packed pirate game show.



14 - 17 years old

THAT'S HILARIOUS

Ever wanted to show off your comedy skills? Then be a part of the cast for the crazy improv show "That's Hilarious" and put on a live show for your friends.

DIVE INTO DJ'ING

Hop on the turn tables and learn to scratch with our Guest DJ.

BUENA VISTA THEATRE

Deck 4 & 5, Midship

FEATURE MOVIES THIS VOYAGE

SATURDAY - PORT CANAVERAL

5:15 pm	PG-13	Solo: A Star Wars Story	3D
8:30 pm	PG-13	Solo: A Star Wars Story	3D

SUNDAY - DAY AT SEA

8:30 am	PG	Family Movie Fun Time: The Incredibles 2	
12:45 pm	PG	Christopher Robin	
2:45 pm	PG-13	Ant-Man and the Wasp	3D
5:15 pm	PG-13	Avengers: Infinity War	
8:15 pm	PG-13	Avengers: Infinity War	
11:00 pm	PG-13	Ant-Man and The Wasp	

MONDAY - DAY AT SEA

8:30 am	PG	Family Movie Fun Time: Coco	
11:00 am	PG-13	Ant-Man and The Wasp	
1:45 pm	PG	Christopher Robin	Open Captioning
5:30 pm	PG	The Incredibles 2	3D
8:15 pm	PG	The Incredibles 2	3D
10:45 pm	PG-13	Avengers: Infinity War	Open Captioning

TUESDAY - ROAD TOWN (TORTOLA)

11:15 am	PG	Coco	
2:00 pm	PG-13	Avengers: Infinity War	3D
5:30 pm	PG	Christopher Robin	
8:15 pm	PG	Christopher Robin	
10:30 pm	PG	The Nutcracker and the Four Realms	

WEDNESDAY - ST. THOMAS

9:30 am	PG	The Nutcracker and the Four Realms	Open Captioning
11:45 am	PG-13	Avengers: Infinity War	
3:00 pm	PG	Christopher Robin	
5:45 pm	PG	The Nutcracker and the Four Realms	3D
8:30 pm	PG	The Nutcracker and the Four Realms	3D
10:45 pm	PG-13	Solo: A Star Wars Story	

THURSDAY - DAY AT SEA

8:30 am	PG	Family Movie Fun Time: Christopher Robin	
10:45 am	PG	The Incredibles 2	Open Captioning
1:15 pm	PG	Coco	3D
5:15 pm	PG-13	Black Panther	
8:15 pm	PG-13	Black Panther	
10:45 pm	PG	Christopher Robin	

FRIDAY - DISNEY CASTAWAY CAY

8:30 am	PG	Family Movie Fun Time: The Incredibles 2	
11:15 am	PG-13	Black Panther	Open Captioning
2:00 pm	PG	The Nutcracker and the Four Realms	
5:15 pm	PG-13	Ant-Man and The Wasp	
8:00 pm	PG-13	Ant-Man and The Wasp	
11:00 pm	PG	The Nutcracker and the Four Realms	3D

Subject to change.

MORE TO ENJOY ONBOARD



NEW FALL 2019 ITINERARIES

New Fall 2019 Itineraries announced! Set sail for spectacular ports including Bermuda. Disney Cruise Line will continue sailing to sun-soaked destinations on Bahamian, Caribbean and Baja cruises! Visit the Disney Vacation Planning, Deck 4, Midship for more information. Disney Vacation Planning tends to get busy on the last day of sailing. Don't miss the opportunity to plan your next Disney vacation.



DISNEY VACATION CLUB® MEMBER CELEBRATION

Join us as we welcome you onboard with a fun, interactive event where you can catch the latest updates at Disney Vacation Club! Please see a Disney Vacation Club Cast Member on Deck 4, Midship or call 7-2805 from your stateroom phone for more information.

PORT SHOPPING INFORMATION

Meet Dan & Dan, your Port Shopping Guides at the Port Shopping Desk, Deck 4, Midship between 7:30 pm - 8:30 pm. Tonight, collect your FREE cruise ship charm and receive a bonus raffle ticket for tomorrow's Port Shopping Talk in the Buena Vista Theatre. Tune into channel 9 and don't miss tomorrow's event covering Tortola & St. Thomas. Buena Vista Theatre, Deck 4, Midship at 11:15 am.



Connect@Sea

FREE INTERNET EMBARKATION DAY SPECIAL

Sign up for a free 50 MB Internet package today and enjoy it throughout the cruise! This offer is only available from noon to midnight on the day your cruise begins. On your wireless device, simply find the "DCL-Guest" Wi-Fi Network, go to www.dclguest.com to create an account, and get your free 50 MB of data to start sharing your memories even before you leave port! If you have any questions, ask our Connect@Sea Expert located at Deck 4, Midship. No purchase necessary. The free 50 MB package can only be used for the duration of the cruise. Only one free package per stateroom, but everyone can share it. Unused data from a package will not be reimbursed and it is non-transferable between voyages or ships.

RELIGIOUS SERVICES

Groups who need a location to practice their faith may contact Guest Services for availability information.

SENSES SPA & SALON



DECK 11, FORWARD Extension 7-1465

RAINFOREST

Come enjoy our serenity lounge, with heated chairs, dry sauna, aromatherapy steam rooms and rainfall, misting showers.

\$193 for couples and \$144 for singles.

COOLSCULPTING

Fear No Mirror with CoolSculpting. The premier non-invasive fat reduction and body contouring treatment. Eliminate fat and sculpt your body with a single treatment. Complimentary Consultations available now in the Rejuvenation Spa at Senses Spa & Salon.

ONBOARD ACUPUNCTURE

Naturally effective for pain, arthritis, sea sickness, stress, digestion, weight loss, and much more.
\$150/session or \$550/5 sessions.

TRIPLE YOUR INDULGENCE

We recommend you enrich your day spa experience by choosing three of your favorite signature treatments and receive:

- 10% off your 1st signature treatment
- 20% off your 2nd signature treatment
- 30% off your 3rd signature treatment

AN 18% AUTO GRATUITY IS ADDED TO ALL SENSES SPA SERVICES.

MERCHANDISE SHOPPING



DECK 3, FORWARD

SOPHIA FIORI DIAMOND TRUNK SHOW

Sophia Fiori, Hollywood's first choice in diamonds has boarded the Disney Fantasy to premiere their new collection of white & colored diamonds worn at the Oscars, Golden Globes, Emmy and Grammy Awards. Stop by White Caps on Deck 3, Forward, and view this stunning collection.

SPECIAL OFFER ONBOARD

Stop by the onboard merchandise shops and receive a Disney Cruise Line Backpack for \$19.99 with any merchandise purchase of \$60.00 or more. No other discount apply. While supplies last. Offer subject to change without notice.

TIFFANY & CO. GRAND UNVEILING

Be a part of history as Tiffany & Co. unveils their very first Disney Cruise Line inspired jewelry! Visit Tiffany & Co. for details on how you can own a piece of this iconic moment. Deck 4 Midship

BIBBIDI BOBBIDI BOUTIQUE

A makeover fit for a princess! Fairy Godmothers In-Training are ready with magic and pixie dust to give your Prince and Princess the transformation of a lifetime. Make your reservations by visiting Bibbidi Bobbidi Boutique, Deck 5, Midship or dialing extension 7-9438. Limited space available.

DUE TO PORT REGULATIONS, WHEN THE SHIP IS DOCKED, THE STORES WILL REMAIN CLOSED.

SHUTTERS PHOTO GALLERY



DECK 4, MIDSHIP

FAMILY PORTRAITS

Photos are taken in the lobby atrium to capture all your vacation memories. Make use of these opportunities to take a beautiful family photo by our Professional photographers and remember your cruise forever.

PHOTO BOOK

Turn your magical vacation memories into an impressive keepsake, a personal one of a kind Photo Book. Fill every page with memories of your cruise vacation. Orders close at 9:00 pm on the last day of the cruise.

PRIVATE STUDIO PORTRAITURE

Book our exclusive and contemporary Private Studio experience today and capture these memories. No obligation to purchase.

PHOTOS ARE AVAILABLE FOR VIEWING ON OUR INTERACTIVE PHOTO KIOSKS APPROXIMATELY FIVE HOURS AFTER BEING TAKEN AND ARE ONLY AVAILABLE FOR PURCHASE DURING THIS CRUISE.

IMPORTANT INFORMATION

Security Notice/Unaccompanied Minor Ashore
All Guests (including children) who wish to disembark or embark the ship are required to present their Key to the World card at the gangway. A photo ID is also required for those Guests who are 18 years of age or older. Guests under the age of 18 are required to have a Parent, Guardian or other responsible adult complete the "Traveling with Minors" section of "My Online Check-In" prior to sailing or sign an authorization form at the Guest Services Desk if they wish to go ashore unaccompanied or with any adult from another stateroom.

Insect Repellent Advisory
The Centers for Disease Control and Prevention recommends wearing long-sleeved shirts and pants along with insect repellent to protect against mosquito bites and related illnesses when going ashore. Complimentary insect repellent is available on the pier as you exit the ship. Insect repellent is also available for purchase in Sea Treasures. When using both sunscreen and insect repellent, use sunscreen first and apply insect repellent on top of sunscreen.

Corridor Quiet Hours
As a courtesy to all our Guests, please recognize quiet hallway hours from 10:00 pm til 8:00 am.

No Reserved Seats Policy
As a courtesy to all our Guests, we kindly advise that the saving of seats is not permitted in the Walt Disney Theatre, and the saving of the sun loungers is not permitted on Deck 11, 12, and 13. Items left unattended will be returned to lost and found at Guest Services, Deck 3 Midship.

Cold and Flu Reminder
Please wash hands frequently and thoroughly, particularly before meals. Contact the Health Center by dialing 7-1927, should anyone in your party become ill.

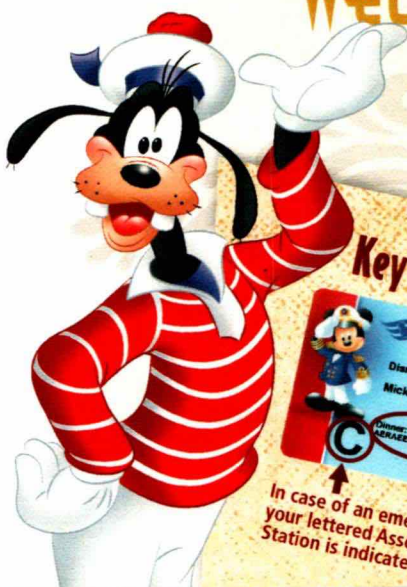
Inclement Weather
For the safety of all our Guests, outdoor events may be changed due to unforeseen weather conditions.

Smoking
For the comfort of our Guests, the following areas are designated as smoking areas:
*Deck 13, forward, port side by Currents
*Deck 12, aft, port side outdoor area that is accessible through the Meridian Lounge
*Deck 4, aft, port side from 6:00 pm to 6:00 am only (all of Deck 4 is non-smoking from 6:00 am to 6:00 pm)
Smoking is prohibited inside all Guest staterooms and on stateroom verandahs. Guests found smoking in their staterooms or on their verandahs will be charged a \$250 stateroom recovery fee. Electronic cigarettes may only be used in designated smoking areas.

Walt Disney Theatre
Theatrical performances may use artificial fog, strobe lights, pyrotechnics and other special effects. For the safety of our performers and the comfort of those around you, the use of any photography, video recording device or any electronic equipment is prohibited.

Verandah Safety
Please do not leave any personal items on your verandah that may be blown overboard or present a fire hazard if left unattended. Do not throw anything over the ship's side. Guests should not sit, lean or climb on the railing or leave children unattended on the verandah. Do not open the verandah and stateroom doors simultaneously as this may create a wind effect and could cause the doors to slam unexpectedly.

WELCOME ABOARD!



Key to the World Card Information




In case of an emergency, your lettered Assembly Station is indicated here.

- ♥ Dinner seatings are 5:45 pm or 8:15 pm.
- ♥ Your table number for the cruise is located after your dinner seating.
- ♥ Dinner locations and rotation are indicated by letters under your dinner time.
A - Animator's Palate, Deck 3, Aft
E - Enchanted Garden, Deck 2, Midship
R - Royal Court, Deck 3, Midship

SAILING AWAY

It's time to go Sailing Away! Join Mickey and Minnie along with Tinker Bell and the rest of the gang as they welcome you aboard the Disney Fantasy.

Deck Stage,
Deck 11, Midship,
4:30 pm

Afternoon	1:45	2:00	2:15	2:30	2:45	3:00	3:15	3:30	3:45	4:00	4:15	4:30	4:45	5:00	5:15	5:30	5:45	6:00	6:15	6:30	6:45						
FUNNEL VISION	Poolside Jams with Cruise Staff DJ Deck 11 Stage							<div>Mandatory Guest Assembly Drill 4:00 pm (All Guests must attend) All ship services will be suspended during this time. Please refer to the posted drill instructions on the back of your stateroom door prior to heading to your Assembly Station. You will not need your life jacket for the Guest Assembly Drill.  Your Assembly Station is indicated on your Key To The World card.</div>					Sailing Away Deck 11 Stage		The Princess and the Frog (G)  Open Captioning Funnel Vision												
BUENA VISTA THEATRE													Solo: A Star Wars Story (PG-13)  Duration: 2 Hours 15 Minutes														
CHARACTERS													 Deck Stage		Minnie Lobby Atrium (V)		Mickey Mouse Balcony		Pluto Preludes								
FUN FOR ALL AGES	Walking Ship Tour Preludes				Walking Ship Tour Disney's Oceaneer Club Preludes		BB-8 Recruitment 							Easy Listening with The Vitos Lobby Atrium				The Comedy & Ventriloquism of TAYLOR MASON Walt Disney Theatre									
ADULTS	Facial Consultations Senses Spa & Salon								Spa Open House Senses Spa & Salon		Spa Raffle Senses Spa & Salon																
VIBE 14-17 YEARS OLD	Youth Activities Open House & Registration 												Youth Activities Open House 										Open for Teens		Chillin' in Vibe		
EDGE 11-14 YEARS OLD	Youth Activities Open House & Registration 												Youth Activities Open House 										Open for Tweens		Foosball Tournament		
OCEANEER LAB 3-12 YEARS OLD	Open House 	Magic Playfloor 	Venue Tour 		Open House 							Open House 	Open For Seated Activities 	Meet Your Counselors 	Magic PlayFloor 	GAGA Ball											
OCEANEER CLUB 3-12 YEARS OLD	Doctor Strange Dark Dimension 	Open House 	Venue Tour 		BB-8 Recruitment 		Open House 							Open House 	Magic PlayFloor 	Venue Tour 	Youth Activities Open House 										
																											
Evening	7:00	7:15	7:30	7:45	8:00	8:15	8:30	8:45	9:00	9:15	9:30	9:45	10:00	10:15	10:30	10:45	11:00	11:15	11:30	11:45	12:00						
FUNNEL VISION	Hercules (G)  Open Captioning Funnel Vision							WALL-E (G)  Open Captioning Funnel Vision					Captain America: Civil War (PG-13)  Open Captioning Funnel Vision														
BUENA VISTA THEATRE								Solo: A Star Wars Story (PG-13)  Duration: 2 Hours 15 Minutes																			
CHARACTERS	Mickey Mouse Balcony		Ariel Lobby Atrium (V)				Mickey Balcony		Tiana Lobby Atrium (V)		Daisy Preludes																
FUN FOR ALL AGES	Goofy Preludes		Donald Preludes				Chip & Dale Preludes		Minnie Balcony				Disney Trivia D Lounge		 D Lounge												
ADULTS	Violin Serenades with Katrin Romanova Ooh La La						All Time Favorites with Soul Duo La Piazza		The Quest The Tube		1820 Society: Stir it, Blend it, Taste it. Cove Cafe		The Comedy & Ventriloquism of JONATHAN BURNS The Tube		Cool Sounds with Soul Duo La Piazza		Violin Serenades Ooh La La		Club DJ Pete Down La Piazza								
VIBE 14-17 YEARS OLD	Game Challenge	Jenga	Foosball Tournament		Ninja		GAGA Ball		The Download		Ice Breakers		Heroes and Villains														
EDGE 11-14 YEARS OLD	Profiles	Meet Your Counselors	Ice Breakers		Game Challenge		Profiles	Ice Breakers		Taking it to The Edge		Heroes and Villains		GAGA Ball													
OCEANEER LAB 3-12 YEARS OLD	Ice Breakers		Super Sloppy Science				Game Challenge		Human Bingo		Detective School		Scavenger Hunt														
OCEANEER CLUB 3-12 YEARS OLD	McStuffin's Toy Hospital		Join the Lion Guard		Wacky Relays		Dress Up Fun		Once Upon a Time		Magic PlayFloor	Parachute Games	Sing Along Fun														

Paradise Punch (Alcoholic)
Espresso Chiller (Non-Alcoholic)

DRINK OF THE DAY

FOLD →

Fold along the dotted lines and take me with you so you don't miss any of the fun!

← FOLD

YOUTH ACTIVITIES OPEN HOUSE
A non-secured program with activities for families, adults and children to enjoy together.



The Comedy and Ventriloquism of Taylor Mason

WALT DISNEY THEATRE

Deck 3, Forward
6:15 pm & 8:30 pm

As a courtesy to all Guests, we kindly advise that the saving of seats is **not** permitted in the Walt Disney Theatre.

Assistance available at the entrance to the Walt Disney Theatre 30 minutes prior to show time.

Character Meet & Greet Ticket Distribution

Port Adventures Desk, Deck 5, Midship 11:45 am - 2:00 pm

The following appearances require a reservation. Space is limited. For Guests who did not book online, a limited number of reservations are available for:

- Princess Gathering
- Frozen Gathering
- Disney Junior Character Breakfast

Character Appearances

SAILING AWAY

Deck 11 Stage - 4:30 pm

MICKEY MOUSE

Balcony - 5:15 pm,
7:15 pm & 9:15 pm

MINNIE MOUSE

Lobby Atrium (V) - 5:30 pm
Balcony - 9:45 pm

PLUTO

Preludes - 5:45 pm

GOOFY

Preludes - 7:30 pm

ARIEL

Lobby Atrium (V) - 7:45 pm

DONALD DUCK

Preludes - 8:00 pm

CHIP & DALE

Preludes - 9:30 pm

PRINCESS TIANA

Lobby Atrium (V) - 9:45 pm

DAISY DUCK

Preludes - 10:00 pm

(H) Hallway - (S) Starboard Side - (P) Port Side - (V) Vestibule

For details of daily Disney character appearances, refer to the character line on your Navigator Grid, or the digital character board in the Lobby Atrium.

Lines close 15 minutes after given times.

SHIP DIRECTORY

YOUTH ACTIVITIES

DISNEY'S OCEANEER CLUB	DECK 5, MID	12:00 PM - 3:30 PM 4:30 PM - 12:00 AM
DISNEY'S OCEANEER LAB	DECK 5, MID	12:00 PM - 3:30 PM 4:30 PM - 12:00 AM
EDGE	DECK 13, MID	12:00 PM - 3:30 PM 4:30 PM - 12:00 AM
IT'S A SMALL WORLD NURSERY	DECK 5, MID	12:00 PM - 3:30 PM 4:30 PM - 11:00 PM
VIBE	DECK 4, FWD	12:00 PM - 3:30 PM 4:30 PM - 12:00 AM

POOLS & MORE

* Children under 12 must have adult supervision in pool areas.

AQUADUCK	DECK 12, MID	12:00 PM - 3:00 PM 4:30 PM - 10:00 PM
AQUALAB	DECK 12, AFT	12:00 PM - 3:15 PM 4:30 PM - 6:00 PM
DONALD'S POOL	DECK 11, MID	11:30 AM - 3:15 PM 6:00 PM - 10:00 PM
MICKEY'S POOL	DECK 11, MID	11:30 AM - 3:15 PM 4:30 PM - 10:00 PM
MICKEY'S SLIDE	DECK 11, MID	12:00 PM - 3:15 PM 4:30 PM - 6:00 PM
NEMO'S REEF	DECK 11, MID	12:00 PM - 3:15 PM 4:30 PM - 6:00 PM
QUIET COVE POOL (18+)	DECK 11, FWD	12:00 PM - 11:00 PM
SATELLITE FALLS (18+)	DECK 13, FWD	12:00 PM - 8:00 PM

Please note, "selfie sticks" are not permitted in any aquatic area.

Complimentary pool vests are available for children to use in the pools onboard. They are located on the pool deck.

RECREATION

GOLF/SPORTS SIMULATORS	DECK 13, AFT	12:00 PM - 3:15 PM 4:30 PM - 6:00 PM
GOOFY GOLF	DECK 13, AFT	
GOOFY'S SPORTS DECK	DECK 13, AFT	12:00 PM - 6:00 PM
MIDSHIP DETECTIVE AGENCY	DECKS 2 & 5, MID	11:30 AM - 10:00 PM
PORT ADVENTURES DESK	DECK 5, MID	12:00 PM - 3:30 PM 4:30 PM - 8:30 PM
SENSES FITNESS CENTER (18+)	DECK 11, FWD	11:30 AM - 10:00 PM

GENERAL INFORMATION

CONNECT@SEA	DECK 4, MID	1:00 PM - 3:30 PM 7:00 PM - 10:00 PM
DISNEY VACATION CLUB	DECK 4, MID	5:00 PM - 10:00 PM
DISNEY VACATION PLANNING	DECK 4, MID	7:30 PM - 8:30 PM
GUEST SERVICES	DECK 3, MID	24 HOURS
HAIR BRAIDING	DECK 11, MID	1:30 PM - 6:00 PM
MEDICAL HEALTH CENTER	DECK 1, FWD	4:30 PM - 7:00 PM
PORT SHOPPING DESK	DECK 4, MID	7:30 PM - 8:30 PM
PRELUDES	DECK 3, FWD	SHOWTIMES
SENSES SPA AND SALON	DECK 11, FWD	11:30 AM - 10:00 PM
SHUTTERS PHOTO GALLERY	DECK 4, MID	7:00 PM - 10:30 PM

SHOPPING

BIBBIDI BOBBIDI BOUTIQUE	DECK 5, MID	12:00 PM - 3:00 PM 5:00 PM - 9:00 PM
MICKEY'S MAINSAIL	DECK 3, FWD	5:45 PM - 11:00 PM
SEA TREASURES	DECK 3, FWD	5:45 PM - 11:00 PM
TIFFANY & CO.	DECK 4, MID	5:45 PM - 11:00 PM
VISTA GALLERY	DECK 2, MID	
WHITE CAPS	DECK 3, FWD	5:45 PM - 11:00 PM
WHOZITS & WHATZITS	DECK 11, MID	12:00 PM - 3:15 PM 4:45 PM - 6:00 PM

DUE TO PORT REGULATIONS, WHEN THE SHIP IS DOCKED, THE STORES MUST REMAIN CLOSED.

EVENING ATTIRE

Cruise Casual

WEATHER FORECAST

Today: Partly Cloudy
High: 74°F/23°C

DINING & LOUNGES

LUNCH

ANIMATOR'S PALATE	DECK 3, AFT	11:45 AM - 2:00 PM
CABANAS	DECK 11, AFT	11:45 AM - 3:15 PM
FILLMORE'S FAVORITES	DECK 11, MID	12:00 PM - 3:30 PM 4:15 PM - 6:30 PM
LUIGI'S PIZZA	DECK 11, MID	12:00 PM - 3:30 PM 4:15 PM - 6:30 PM
TOW MATER'S GRILL	DECK 11, MID	12:00 PM - 3:30 PM 4:15 PM - 10:00 PM

DINNER

ANIMATOR'S PALATE	DECK 3, AFT	5:45 PM & 8:15 PM
ENCHANTED GARDEN	DECK 2, MID	5:45 PM & 8:15 PM
PALO (18+) (RESERVATIONS REQ. & NOM. FEE APPLIES)	DECK 12, AFT	6:00 PM - 8:30 PM
REMY (18+) (RESERVATIONS REQ. & NOM. FEE APPLIES)	DECK 12, AFT	6:00 PM - 8:30 PM
ROYAL COURT	DECK 3, MID	5:45 PM & 8:15 PM

LATE NIGHT SNACKS

LA PIAZZA (18+)	DECK 4, AFT	10:45 PM - 11:30 PM
LUIGI'S PIZZA	DECK 11, MID	9:30 PM - 12:00 AM

ADDED FEATURES

BEVERAGE STATION	DECK 11, MID	24 HOURS
EYE SCREAM	DECK 11, MID	12:00 PM - 3:30 PM 4:15 PM - 11:00 PM
ROOM SERVICE	DIAL O	24 HOURS
SWEET ON YOU	DECK 11, AFT	11:30 AM - 3:30 PM 4:15 PM - 10:30 PM

ENTERTAINMENT - LOUNGES - BARS

Adults must be 21 and older to consume alcoholic beverages.

BON VOYAGE	DECK 3, MID	11:45 AM - 10:30 PM
COVE BAR (18+)	DECK 11, FWD	11:45 AM - 10:30 PM
COVE CAFE (18+)	DECK 11, FWD	11:45 AM - 12:00 AM
CURRENTS (18+)	DECK 13, FWD	11:45 AM - 11:00 PM
D LOUNGE	DECK 4, MID	SHOWTIMES
FROZONE TREATS	DECK 11, MID	11:45 AM - 6:00 PM
LA PIAZZA (18+ AFTER 9:00 P.M.)	DECK 4, AFT	11:45 AM - 2:00 AM
MERIDIAN (18+)	DECK 12, AFT	5:00 PM - 12:00 AM
O'GILLS PUB (18+ AFTER 9:00 P.M.)	DECK 4, AFT	11:45 AM - 12:00 AM
OOH LA LA (18+)	DECK 4, AFT	5:00 PM - 12:00 AM
OUTLOOK (18+)	DECK 14, MID	
SENSES JUICE BAR	DECK 11, FWD	11:45 AM - 8:00 PM
SKYLINE (18+)	DECK 4, AFT	5:00 PM - 12:00 AM
THE TUBE (18+ AFTER 9:00 P.M.)	DECK 4, AFT	6:00 PM - 12:00 AM
VISTA CAFE	DECK 4, MID	11:45 AM - 10:30 PM
WAVES	DECK 12, AFT	11:45 AM - 6:00 PM

Public Health Advisory: Consuming raw or under-cooked meats, poultry, seafood, shellfish, or eggs may increase your risk for food borne illness, especially if you have certain medical condition.



MIDSHIP DETECTIVE AGENCY

Use your detective know-how and our special detective "badge" to search the ship and catch your criminal! Deck 2 & 5, Midship Kiosks.



Visit the Port Adventures Desk,
Deck 5, Midship, for bookings & questions.

IMPORTANT NUMBERS

Fire/Security:	7-3001
Medical Emergency:	7-3000
Health Center:	7-1927