



# VOYAGE NAVIGATOR

SUNDAY  
OCTOBER 14, 2018

TO

FRIDAY  
OCTOBER 19, 2018

## CRUISE HIGHLIGHTS

### SUNDAY

SAN DIEGO, CALIFORNIA  
Port Departure: 5:00 pm  
All Aboard: 4:00 pm  
Attire: Cruise Casual



**SHOWTIME: MICHAEL HARRISON**  
Walt Disney Theatre  
6:15 pm & 8:30 pm

### MONDAY

DAY AT SEA  
Attire: Optional Dress Up

THE  
GOLDEN  
MICKEYS

**THE GOLDEN MICKEYS**  
Walt Disney Theatre  
6:15 pm & 8:30 pm

### TUESDAY

CABO SAN LUCAS, MEXICO  
All Ashore: 8:30 am  
All Aboard: 4:45 pm  
Attire: Pirate or Cruise Casual



**SHOWTIME: DAVID GATTI**  
Walt Disney Theatre  
6:15 pm & 8:30 pm

### WEDNESDAY

DAY AT SEA  
Attire: Halloween or Cruise Casual



**MICKEY'S MOUSE-QUERADE**  
Lobby Atrium  
6:30 pm & 9:00 pm

### THURSDAY

ENSENADA, MEXICO  
All Ashore: 8:30 am  
All Aboard: 4:45 pm  
Attire: Cruise Casual



**FROZEN, A MUSICAL SPECTACULAR**  
Walt Disney Theatre  
6:00 pm & 8:30 pm

Subject to change.

## WELCOME ABOARD!

### YOUR STATEROOM & LUGGAGE

Staterooms will be ready at 1:30 pm. To allow your Stateroom Host/ess time to prepare your room, please do not remove the blue stanchion straps. Stateroom hosts will deliver luggage throughout the day until 5:30 pm.

### STATEROOMS WITH BUNK BEDS

Bunk beds are recessed into the ceiling and will be prepared during evening turndown service by your Stateroom Host/ess.

### STATEROOM SAFE

Each stateroom is equipped with a secured storage safe. Instructions for use are located on the safe.

### TO CHANGE DINING ASSIGNMENT

Requests for different seating times will be taken today:

- 12:30 pm - 3:30 pm; Book in Promenade Lounge, Deck 3, Aft or please dial 7-10891 and leave a voicemail.

### PALO DINING RESERVATIONS

Reservations are required and will be taken on a first come basis today:

- 12:30 pm - 3:30 pm; Book in Promenade Lounge, Deck 3, Aft or please dial 7-6843 and leave a voicemail.

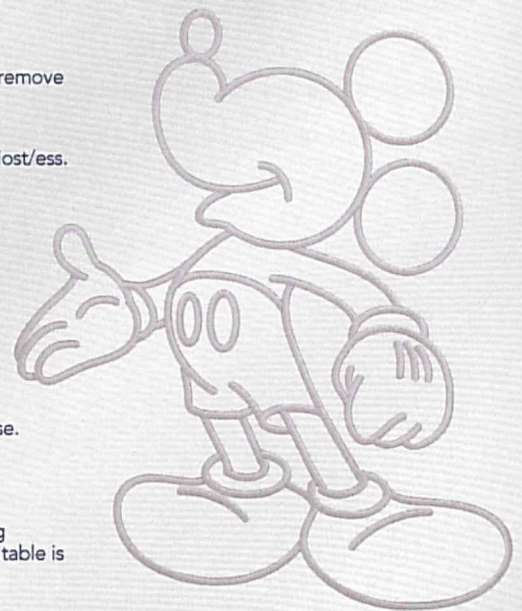
**Adult Exclusive Dining Opportunity!** Guests are invited to make 2 dinner reservations at our adult-exclusive restaurant, Palo. This includes one reservation on embarkation evening and one more on another night of the cruise. Reservations are subject to availability and a specialty dining charge will apply.

### DINNER

5:45 pm - First seating 8:15 pm - Second seating

Please check your Key To The World Card for details of your dining rotation, and bring them to your specific dining location. There is no need to wait in line prior to dinner. Dining Rooms open at designated seating times and your table is reserved each night of your cruise.

AP = Animator's Palate, Deck 4, Aft TR = Triton's, Deck 3, Midship TP = Tiana's Place, Deck 3, Aft



Create the most memorable experiences during your Disney Cruise Line vacation with Port Adventures! Our Port Adventures are designed for you to see the best our ports have to offer. Stop by the Port Adventures Desk, Deck 3, Midship where our friendly team will be happy to assist you plan your adventure! There is an adventure for everyone on your Disney Wonder® vacation.

IMPORTANT NUMBERS

Fire/Security: 7-3001

Medical Emergency: 7-3000

Health Center: 7-1927



## ADULT ACTIVITY HIGHLIGHTS



### 1820 SOCIETY (GUESTS 18-20 YEARS ONLY)

1820 Society is an exclusive option for young adult Guests. Come meet fellow passengers and learn about the excellent activities that the Disney Wonder offers to create the perfect cruise experience.



### 80'S FLASHBACK

The 80's are back! Join your Cruise Staff team, in testing your 80's knowledge in this high energy 80's revival.



### ANYONE CAN COOK

Every Chef has a specialty, and ours is no exception. Get a taste of perfection with each recipe.

### ART OF THE THEME SHOW TOUR

Join us for a guided tour highlighting the design, Imagineering and artistry of the ship. This tour is reserved for Guests 18 and over.

### CRUISIN' SOLO GATHERING

Single, single parent or just traveling alone? Join your Cruise Staff for an informal gathering.



### DISNEY AT SEA WITH D23

Join us for an exciting look at what's new and what's next from all of Disney's wonderful worlds! From theme parks and movies, to vision, music and beyond, you won't want to miss a minute of this new show presented by D23, Disney's official fan club.



### HALLOWEEN ISN'T JUST FOR KIDS

Flaunt your wild side and compete in our adults only costume contest. We hope to see you scaring up some fun on the dance floor. Trick or Treat isn't just for Kids...anymore.



Senses Spa & Salon has a variety of seminars and fitness classes available throughout the cruise. Pamper yourself with therapeutic spa treatments of heat, steam, rain and water in luxurious and tranquil private rooms. Deck 9, Forward.

### BEVERAGE SEMINARS

Your Beverage team has a host of tastings and seminars to entertain and educate you. Stop by Promenade Lounge, Deck 3. Aft to pre-book these experiences (nominal fee applies).

Mixology - Stem to Stern Wine Tasting - Martini Tasting - Mojito Tasting  
Beer Tasting - Cognac Tasting - Whisky Tasting - Champagne Tasting  
Tequila & Margarita Tasting - Chocolate & Liquor Tasting - Rum Tasting



## FUN FOR ALL AGES HIGHLIGHTS



### ADVENTURES AWAY

Earn your status as V.I.P. sailors as your Cruise Director, your Disney Pals, and the Cruise Staff officially begin your "Adventures Away".



### A PIRATES LIFE FOR ME

Calling all Pirates, we be! If ye have an adventurous spirit or pirate savvy, come spin the "Wheel of Destiny" for a treasure trove of fun be ripe for the takin' in this action packed pirate game show.



### DISNEY MOVIE CHALLENGE POOLSIDE

So you like movies? And you like bingo? This deck party has them both! Come on out to watch all your favorite movie clips and just maybe your team will win the opportunity to choose the movie played by the pool today!



### DISNEY VACATION CLUB GROUP PREVIEW

Join us for our interactive group presentation to learn about taking magical vacations year after year! For more information, please see a Disney Vacation Club Cast Member on Deck 4, Midship, or call 7-2805 from your stateroom phone.



### HAUNTED STORIES OF THE SEA

Join our Sea Captain for the Halloween tradition of telling ghostly tales of the strange, bizarre and just plain scary that will leave even the bravest of souls with a chill.



### JACK-JACK'S INCREDIBLE DIAPER DASH

Calling all baby cruisers! It's time to take to the mat to see who's the fastest crawler of the seven seas! Register your baby 15 minutes prior to the big race.



### JACKPOT BINGO

CASH prizes and raffle prizes to be won in our family friendly Bingo sessions with your Cruise Staff. Those under the age of 18 must be accompanied by an adult to play!



### MICKEY 200

Don't eat your vegetables... race them in this wild and wacky charge to the finish line. May the best veggie win! (Limited Availability)



### MICKEY MANIA

Join us for the ultimate test of your Disney knowledge as we play our live, interactive game show, that's "insania!"



### MICKEY'S MOUSE-QUERADE PARTY

Enjoy a fun "Mouse-Querade" featuring music, games, a visit from some of your favorite Disney Pals in their Halloween costumes and of course treats.



### PIRATES IN THE CARIBBEAN DECK PARTY

Yer Disney Friends are all set for a swashbucklin' good time! It's a Pirate Celebration, me hearties! Hoist yourself to Deck 9 to enjoy a rowdy buccaneer bash we call Pirates IN the Caribbean Deck Party.



### SO YOU THINK YOU KNOW YOUR FAMILY?

This fun-filled family game show is always full of surprises. Find out how well you know, or don't know your family!



### THE PUMPKIN TREE

Join us in the Lobby Atrium for some frightening fun, as we celebrate Halloween with a spooky ceremony that will have you screaming with ghoulish delight.



### WHO WANTS TO BE A MOUSEKETEER?

Your chance to get into the "hot seat" and win limited edition prizes. Or, play along as part of our live studio audience.



### 'TIL WE MEET AGAIN

The world-famous Disney Characters and some of your new friends from the Disney Wonder stage shows bid you a charming farewell.



# YOUTH ACTIVITIES INFO & HIGHLIGHTS



## Dine & Play

As a convenience for families dining at 8:15 pm, our Youth Activities counselors will be available at the entrance of each restaurant to bring registered children to join the fun in the Youth Activities areas at the following times:

9:15 pm at the entrance of Triton's,

9:30 pm at the entrance of Tiana's Place and Animator's Palate.

## Pre-School Fun

Disney's Oceaneer Club is reserved for only those between 3-5 years of age. This is a time for them to become acclimated to Disney's Oceaneer Club, make new friends and join in on a lot of fun-filled programs and activities. Please note after Pre-School Fun has concluded, Disney's Oceaneer Club will be open for Secured Programming for ages 3-12.

## Youth Activities Open House

Open House is an opportunity for all to come and participate in a variety of exciting activities and free time in the Oceaneer Club, Oceaneer Lab, Edge and Vibe throughout the cruise. During these times secured programming will still be offered in the other venue for those looking to check their children into care.

## Youth Activities Venue Tour

Come and take a tour of Disney's Oceaneer Club and Disney's Oceaneer Lab. This informative tour will give you the information you need to know about our exciting spaces and activities offered for children ages 3-12. Please see your Personal Navigator or the Navigator App for times.



3 - 12 years old

## JOIN THE LION GUARD

Harness your inner animal and find out if you have what it takes to join the Lion Guard!

## MILES' COSMIC EXPLORER ADVENTURES

Miles needs your help! Gadfly has stolen his tech, and it's up to you to solve clues and puzzles in order to return the missing items back to Miles.

## SOFIA THE FIRST - MAGICAL STORYTELLING

You're invited to take part in Sorcery 101 at the Royal Prep Academy, where you'll learn a few spells and help retell one of Sofia's many magical adventures.



3 - 12 years old

## LAVA FLOW

Build your own volcano and watch it erupt as you learn about the physics of volcanoes.

## MAKE A SHOW DISNEY STYLE

OPEN CALL - kids needed for a fun, one of a kind, make it your own show. Working in teams you'll have everything you need to make your own show in 90 minutes or less. Whether you're a Beauty or a Beast, you're sure to have fun!

## PISTON CUP CHALLENGE

It's Dinoco time and you're part of the pit crew! Design your own race car and see if you've got what it takes to end up in the winner's circle!



11 - 14 years old

## DESCENDANT'S DEN DJ SPIN OFF

Photo Booth! DJ lessons! Fun games! Sing! Laugh! Dance! It's the next generation of fun - Descendants style!

## HEROES AND VILLAINS

Join your favorite hero or villain team on a series of activities that will take place throughout the cruise.



14 - 17 years old

## GOTCHA

You will try to eliminate your victim by various methods collecting points throughout the day, last person standing with the most points wins.

## HAUNTED MANSION FAMILY PORTRAITS

Grim grinning ghosts come out to socialize as teens get transformed in a ghoulish photo shoot that is guaranteed to bring the spooks out for a swinging waken!

# BUENA VISTA THEATRE

Deck 5, Aft

## FEATURE MOVIES THIS VOYAGE

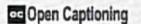
### SUNDAY - SAN DIEGO, CALIFORNIA

1:45 pm	PG	A Wrinkle in Time
5:30 pm	PG	Coco
8:00 pm	PG	Coco
10:15 pm	PG	The Incredibles 2



### MONDAY - DAY AT SEA

8:30 am	PG	A Wrinkle in Time
12:30 pm	PG	Christopher Robin
2:45 pm	PG-13	Ant-Man and the Wasp
5:15 pm	PG-13	Solo: A Star Wars Story
8:00 pm	PG-13	Solo: A Star Wars Story
10:45 pm	PG	Christopher Robin



### TUESDAY - CABO SAN LUCAS, MEXICO

12:15 pm	PG	Christopher Robin
2:30 pm	PG	The Incredibles 2
5:30 pm	PG	Christopher Robin
8:00 pm	PG	Christopher Robin
10:45 pm	PG-13	Solo: A Star Wars Story

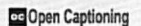


### WEDNESDAY - DAY AT SEA

8:30 am	PG	Christopher Robin
10:45 am	PG	The Incredibles 2
3:15 pm	PG	Coco
5:30 pm	PG-13	Ant-Man and The Wasp
8:00 pm	PG-13	Ant-Man and The Wasp
10:30 pm	PG	The Incredibles 2

### THURSDAY - ENSENADA, MEXICO

9:30 am	PG	The Incredibles 2
12:00 pm	PG-13	Ant-Man and the Wasp
2:30 pm	PG-13	Solo: A Star Wars Story
5:15 pm	PG	The Incredibles 2
8:00 pm	PG	The Incredibles 2
10:30 pm	PG-13	Ant-Man and the Wasp



Subject to change.

## FEATURED VARIETY ACTS THIS VOYAGE



### THE VENTRILOQUISM & COMEDY OF MICHAEL HARRISON

Michael Harrison is an extraordinarily talented ventriloquist, puppeteer and comedian. He has worked alongside numerous acts from The Muppets to Boyz 2 Men. Michael wrote and starred in the award winning television show, "Kids in the Firehall," which was awarded the prestigious Bronze Apple Award. Recently, he took his talents to a new level and appeared on "America's Got Talent" & finished as one of the finalists.



### THE AMAZING ILLUSIONS OF DAVID GATTI

An award winning magician, Gatti is an Italian by birth who has been hooked by illusion and wizardry since childhood. Over an illustrious career of 2 decades, the state-of-the-art magician has mesmerized many with his incredible and unique talents through several Euro TV shows and Satellite programs recently headlining his show in Las Vegas. He has performed in more than 50 countries across 4 continents. The theatrical storytelling style and incredible sleight of Hand, are his trademarks.



# MORE TO ENJOY ONBOARD

## NEW SPRING 2020 ITINERARIES

New Spring 2020 Itineraries announced! Experience sailings to the Caribbean, the Bahamas, Mexico, and Hawaii with your family! And for the very first time, sail from New Orleans to the Caribbean or Bahamas on Disney Wonder. Visit Disney Vacation Planning, Deck 4, Midship for more information. Disney Vacation Planning tends to get busy on the last day of sailing. Don't miss the opportunity to plan your next Disney vacation.

## DISNEY VACATION CLUB® GROUP PREVIEW

Join us for our interactive group presentation to learn about taking magical vacations year after year! For more information, please see a Disney Vacation Club Cast Member on Deck 4, Midship, or call 7-2805 from your stateroom phone.

## PORT SHOPPING INFORMATION

Come and meet Michael, your Port Shopping Guide, at the Port Shopping Desk, Deck 3, Midship from 7:00 pm - 8:30 pm for a complimentary charm. Don't miss the Port Shopping Talk on Day at Sea 1 in the Buena Vista Theatre, Deck 5, Aft, at 11:00 am for all of your Port Shopping information and to enter a raffle for a chance to win a Diamond Pendant. Tune into Channel 24-6 all cruise long for more Port Shopping information.

## Connect@Sea

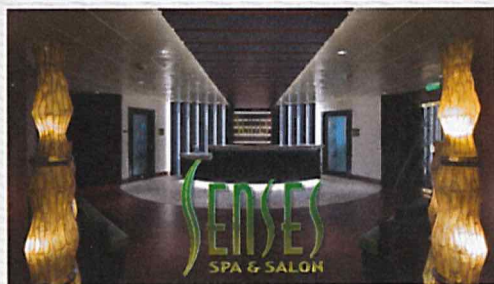
### FREE INTERNET EMBARKATION DAY SPECIAL

Sign up for a free 50 MB Internet package today and enjoy it throughout the cruise! This offer is only available from noon to midnight on the day your cruise begins. On your wireless device, simply find the "DCL-Guest" Wi-Fi Network, go to [www.dclguest.com](http://www.dclguest.com) to create an account, and get your free 50 MB of data to start sharing your memories even before you leave port! If you have any questions, ask our Connect@Sea Expert located at Deck 3, Midship. No purchase necessary. The free 50 MB package can only be used for the duration of the cruise. Only one free package per stateroom, but everyone can share it. Unused data from a package will not be reimbursed and it is non-transferable between voyages or ships.

### RELIGIOUS SERVICES

Groups who need a location to practice their faith may contact Guest Services for availability information.

## SENSES SPA & SALON



**DECK 9, FORWARD**  
Extension 7-1465

### RAINFOREST

Come enjoy our serenity lounge, with heated chairs, dry sauna, aromatherapy steam rooms and rainfall, misting showers. 5 Day Pass: Couples \$169 Single \$114

### REJUVENATION SPA CONSULTATIONS

Ready to enhance your natural beauty? Book your free Facial Rejuvenation consultation with our Rejuvenation Dr. Mariangel at the Senses Spa.

### ONBOARD ACUPUNCTURE

Acupuncture is a safe and effective medicine that allows your body to heal itself, and is effective for various health conditions. See your onboard Acupuncturist for your free consultation.

### IONTHERMIE

Lose between 1 - 8 inches. Speed up your metabolism. Firm muscle tone. Improve appearance of cellulite. \$155/1 session or \$299/3 sessions.

### BIOTEC FACIALS

Our revolutionary facials address skin tone, blemishes and fine lines to transform the texture of the skin. The ultrasonic peel, massage and light therapy deliver a complexion that has never been smoother.

**AN 18% AUTO GRATUITY IS ADDED TO ALL SENSES SPA SERVICES.**

## MERCHANDISE SHOPPING



**DECK 4, FORWARD**

### TAG HEUER TIMEPIECES

Travel through time with TAG Heuer; and discover the luxury Swiss watchmaker's latest collection. Visit White Caps, Deck 4, Forward.

### EFFY JEWELRY SPECIAL OFFER

The stylish Effy jewelry pieces are designed to allow you the opportunity to mix and match to create a look that's all your own. Receive a complimentary Effy scarf and jewelry pouch with each Effy jewelry purchase. While supplies last. White Caps, Deck 4, Forward.

### BIBBIDI BOBBIDI BOUTIQUE

A makeover fit for a princess! Fairy Godmothers-in-Training are ready with magic and pixie dust to give your Prince and Princess the transformation of a lifetime. Make your reservations by visiting Bibbidi Bobbidi Boutique, Deck 10, Forward, Port Side, or dialing extension 7-10878. Limited space available.

### HELPFUL SHOPPING TIP

While shopping onboard, you may collect your items from both stores before proceeding to checkout at any register. No need to have to wait in line in each store to pay for your items separately! Mickey's Mainsail and White Caps, Deck 4, Forward.

**DUE TO PORT REGULATIONS, WHEN THE SHIP IS DOCKED, THE STORES WILL REMAIN CLOSED.**

## SHUTTERS PHOTO GALLERY



**DECK 4, AFT**

### WELCOME ABOARD RAFFLE

View your embarkation photos in Shutters, Deck 4, Aft and enter our raffle for a chance to win a 10 Digital Photos valued at \$149.95. Winner must be present at the 10:00 pm drawing in Shutters, Deck 4, Aft. \*Terms and conditions apply. Visit Shutters on Deck 4, Aft for more information.

### GET THE PICTURE!

Take home all your stateroom photos from this cruise on a USB! Terms and conditions apply. Visit Shutters on Deck 4, Aft and ask your friendly Shutters staff for more information. Get The Picture! Hurry! Order yours now.

### PHOTO BOOK

Turn your magical vacation memories into an impressive keepsake with a personalized PhotoBook. Order by 9:30 pm on the final night of the cruise.

### PRIVATE STUDIO PORTRAITURE

Book our exclusive and contemporary Private Studio experience today and capture these memories. No obligation to purchase. Black and White only.

**PHOTOS ARE AVAILABLE FOR VIEWING ON OUR INTERACTIVE PHOTO KIOSKS APPROXIMATELY FIVE HOURS AFTER BEING TAKEN AND ARE ONLY AVAILABLE FOR PURCHASE DURING THIS CRUISE.**

## IMPORTANT INFORMATION

**Security Notice/Unaccompanied Minor Ashore**  
All Guests (including children) who wish to disembark or embark the ship are required to present their Key to the World card at the gangway. A photo ID is also required for those Guests who are 18 years of age or older. Guests under the age of 18 are required to have a Parent, Guardian or other responsible adult complete the "Traveling with Minors" section of "My Online Check-In" prior to sailing or sign an authorization form at the Guest Services Desk if they wish to go ashore unaccompanied or with an adult from another stateroom.

**Inclement Weather**  
For the safety of all Guests, outdoor events may be changed due to unforeseen weather conditions.  
**Insect Repellent Advisory**  
The Centers for Disease Control and Prevention recommends wearing long-sleeved shirts and pants along with insect repellent to protect against mosquito bites and related illnesses when going ashore. Complimentary insect repellent is available on the pier as you exit the ship. Insect repellent is also available for purchase in White Caps. When using both sunscreen and insect repellent, use sunscreen first and apply insect repellent on top of sunscreen.

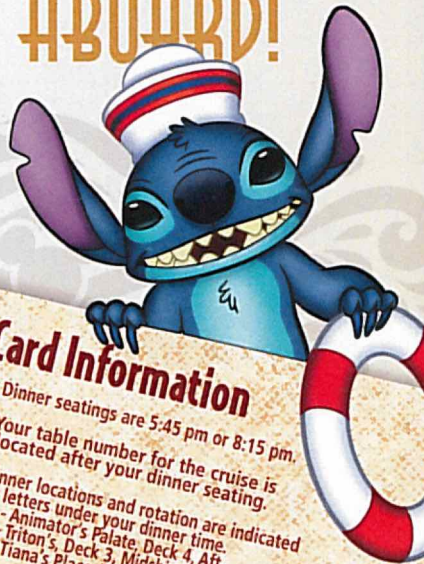
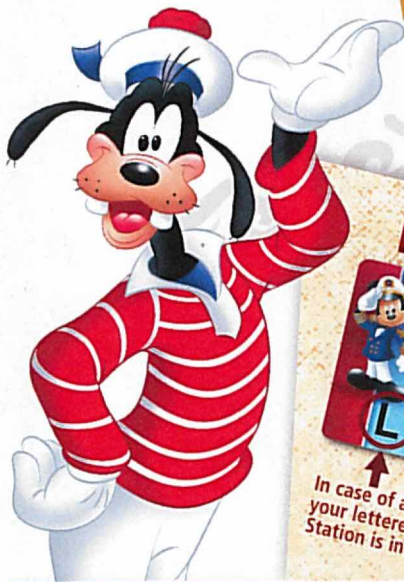
**Corridor Quiet Hours**  
As a courtesy to all our Guests, please recognize quiet hallway hours from 10:00 pm til 8:00 am.  
**No Reserved Seats Policy**  
As a courtesy to all our Guests, we kindly advise that the saving of seats is not permitted in the Walt Disney Theatre, and the saving of the sun loungers is not permitted on Deck 9 and 10. Items left unattended will be returned to lost and found at Guest Services, Deck 3 Midship.  
**Cold and Flu Reminder**  
Please wash hands frequently and thoroughly; particularly before meals. Contact the Health Center by dialing 7-1927, should anyone in your party become ill.

**Smoking**  
For the comfort of our Guests, the following areas are designated as smoking areas:  
\*Deck 9, Forward, Port Side  
\*Deck 4, Starboard side from 6:00 pm to 6:00 am only (all of Deck 4 is non-smoking from 6:00 am to 6:00 pm)  
Smoking is prohibited inside all Guest staterooms and on stateroom verandahs. Guests found smoking in their staterooms or on their verandahs will be charged a \$250 stateroom recovery fee. Electronic cigarettes may only be used in designated smoking areas.

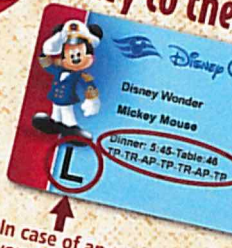
**Walt Disney Theatre**  
Theatrical performances may use artificial fog, strobe lights, pyrotechnics and other special effects. For the safety of our performers, and the comfort of those around you, the use of any photography, video recording device or any electronic equipment is prohibited.  
**Verandah Safety**  
Please do not leave any personal items on your verandah that may be blown overboard or present a fire hazard if left unattended. Do not throw anything over the ship's side. Guests should not sit, lean or climb on the railing or leave children unattended on the verandah. Do not open the verandah and stateroom doors simultaneously as this may create a wind effect and could cause the doors to slam unexpectedly.



# WELCOME ABOARD!



## Key to the World Card Information



In case of an emergency, your lettered Assembly Station is indicated here.

- ♥ Dinner seatings are 5:45 pm or 8:15 pm.
- ♥ Your table number for the cruise is located after your dinner seating.
- ♥ Dinner locations and rotation are indicated by letters under your dinner time.  
AP - Animator's Palate, Deck 4, Aft  
TR - Triton's, Deck 3, Midship  
TP - Tiana's Place, Deck 3, Aft

## FAMILY DECK PARTY

Earn your status as V.I.P. sailors as your Cruise Director, Natalie, your Disney Pals, and the Cruise Staff officially begin your "Adventures Away".

Deck 9 Stage,  
4:30 pm

**DRINK OF THE DAY**  
Paradise Punch (Alcoholic)  
Espresso Chiller (Non-Alcoholic)

Afternoon	1:45	2:00	2:15	2:30	2:45	3:00	3:15	3:30	3:45	4:00	4:15	4:30	4:45	5:00	5:15	5:30	5:45	6:00	6:15	6:30	6:45
FUNNEL VISION	The Princess and the Frog (G)  Open Captioning Funnel Vision											Adventures Away Funnel Vision									
BUENA VISTA THEATRE	A Wrinkle in Time (PG) Duration: 1 Hour 49 Minutes											Coco (PG) Duration: 1 Hour 49 Minutes									
CHARACTERS	Join the Lion Guard Oceaneer Club											Mickey DK4 Mid (S)									
FUN FOR ALL AGES	Walking Ship Tour Preludes											Goofy Preludes									
ADULTS	Spa Open House Senses Spa Fitness Center											Guitar Melodies Quiet Cove Pool									
VIBE 14-17 YEARS OLD	Youth Activities Open House & Registration											Youth Activities Open House & Registration									
EDGE 11-14 YEARS OLD	Youth Activities Open House & Registration											Youth Activities Open House & Registration									
OCEANEER LAB 3-12 YEARS OLD	Youth Activities Open House & Registration											Youth Activities Open House & Registration									
OCEANEER CLUB 3-12 YEARS OLD	Open House; Join the Lion Guard  Open House; Youth Activities Tour  Open House											Youth Activities Open House & Registration									

### Mandatory Guest Assembly Drill 4:00 pm

(All Guests must attend)

All ship services will be suspended during this time.

Refer to the posted drill instructions on the back of your stateroom door prior to heading to Deck 4. Please bring your Key to the World Card.

You will not need your life jacket for the Guest Assembly Drill.



Your Assembly Station is indicated on your Key To The World card.



Deck 9 Stage

Disney Songs with Supernova Duo  
Promenade Lounge

Piano Favorites with Ed Kelly  
Lobby Atrium

The Ventriloquism & Comedy of  
**MICHAEL HARRISON**  
Walt Disney Theatre

Cruisin' Solo  
Gathering Cove Cafe

Footprint Analysis  
Senses Spa Fitness Center

Guitar Melodies  
Quiet Cove Pool

Fold along the dotted lines and take me with you so you don't miss any of the fun!

## Disney WUNDER

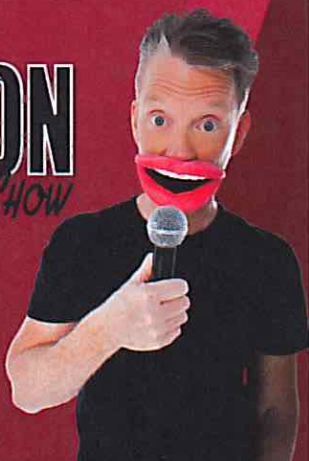
Evening	7:00	7:15	7:30	7:45	8:00	8:15	8:30	8:45	9:00	9:15	9:30	9:45	10:00	10:15	10:30	10:45	11:00	11:15	11:30	11:45	12:00
FUNNEL VISION	Frozen Fever (G)  The Incredibles (PG)  Open Captioning Funnel Vision											Guardians of the Galaxy (PG-13) Funnel Vision									
BUENA VISTA THEATRE	Coco (PG) Duration: 1 Hour 49 Minutes											The Incredibles 2 (PG)   Open Captioning Duration: 1 Hour 58 Minutes									
CHARACTERS	Minnie DK4 Mid (S)											Goofy Lobby Atrium (P)									
FUN FOR ALL AGES	Family Dance Party Promenade Lounge											Family Animation D Lounge									
ADULTS	Keys & Melodies with Bongi Maestro Cadillac Lounge											Piano Hits with Ed Kelly Cadillac Lounge									
VIBE 14-17 YEARS OLD	Cards Tournament											Ice Breakers									
EDGE 11-14 YEARS OLD	GAGA Ball											Profiles									
OCEANEER LAB 3-12 YEARS OLD	Oceaneer Rangers											Lava Flow									
OCEANEER CLUB 3-12 YEARS OLD	Welcome Party											Once Upon a Time									

**YOUTH ACTIVITIES OPEN HOUSE**  
A non-secured program with activities for families, adults and children to enjoy together.





# THE MICHAEL HARRISON SHOW



## WALT DISNEY THEATRE

Deck 4, Forward  
6:15 pm & 8:30 pm

As a courtesy to all Guests,  
we kindly advise that the saving of  
seats is **not** permitted  
in the Walt Disney Theatre.

Assistance is available at the entrance to the Walt Disney Theatre 30 minutes prior to show time.

## Character Meet & Greet Ticket Distribution

**Port Adventures Desk, Deck 3, Midship - 12:00 pm - 2:00 pm**  
The following appearances require a reservation. Space is limited. For Guests who did not book online, a limited number of reservations are available for:

- Princess Gathering
- Frozen Gathering
- Disney Junior Character Breakfast

## Character Appearances

### JOIN THE LION GUARD

Disney's Oceaneer Club - 2:00 pm

### PLUTO

Lobby Atrium (P) - 9:45 pm

### ADVENTURES AWAY

Deck 9 Stage - 4:30 pm

### DAISY DUCK

DK5 Mid (S) - 10:00 pm

### MICKEY MOUSE

DK4 Mid (S)  
5:15 pm & 10:00 pm

### GOOFY

Preludes - 5:30 pm  
Lobby Atrium (P) - 10:15 pm

### CHIP & DALE

Lobby Atrium (P) - 5:30 pm

### MINNIE MOUSE

DK4 Mid (S)  
5:45 pm & 9:30 pm

### DONALD DUCK

DK5 Mid (S) - 9:30 pm

(S) Starboard Side - (P) Port Side

For details of daily Disney character appearances, refer to the character line on your Navigator Grid, or the digital character board in the Lobby Atrium.

Lines close 15 minutes after advertised start time.



## SHIP DIRECTORY

### YOUTH ACTIVITIES

DISNEY'S OCEANEER CLUB	DECK 5, Mid	12:00 PM - 3:30 PM
		4:30 PM - 12:00 AM
DISNEY'S OCEANEER LAB	DECK 5, Mid	12:00 PM - 3:30 PM
		4:30 PM - 12:00 AM
EDGE	DECK 9, Mid	12:00 PM - 3:30 PM
		4:30 PM - 12:00 AM
IT'S A SMALL WORLD NURSERY	DECK 5, Aft	12:00 PM - 3:30 PM
		4:30 PM - 11:00 PM
VIBE	DECK 10, Mid	12:00 PM - 3:30 PM
		4:30 PM - 12:00 AM

### POOLS

Children under 12 years of age must have adult supervision in all pools.

AQUALAB	DECK 9, Aft	12:00 PM - 3:30 PM
		4:30 PM - 8:00 PM
DORY'S REEF	DECK 9, Aft	12:00 PM - 3:30 PM
		4:30 PM - 8:00 PM
GOOFY'S POOL	DECK 9, Mid	12:00 PM - 3:30 PM
		6:00 PM - 10:00 PM
QUIET COVE POOL (18+)	DECK 9, Fwd	12:00 PM - 3:30 PM
		4:30 PM - 11:00 PM
TWIST N' SPOUT	DECK 9, Aft	12:00 PM - 3:30 PM
		4:30 PM - 7:00 PM

Please note, "selfie sticks" are not permitted in any aquatic area.  
Complimentary pool vests are available for children to use in the pools onboard.  
They are located on the pool deck.

### RECREATION

CHILL SPA	DECK 9, Fwd	12:00 PM - 10:00 PM
PORT ADVENTURES DESK	DECK 3, Mid	12:00 PM - 3:30 PM
		4:30 PM - 8:30 PM
SENSES FITNESS CENTER (18+)	DECK 9, Fwd	12:00 PM - 10:00 PM
WIDE WORLD OF SPORTS DECK	DECK 10, Fwd	12:00 PM - 3:30 PM
		3:30 PM - 11:59 PM

### GENERAL INFORMATION

BUENA VISTA THEATRE	DECK 5, Aft	SHOWTIMES
CONNECT@SEA DESK	DECK 3, Aft	1:30 PM - 4:00 PM
		7:00 PM - 10:00 PM
DISNEY VACATION CLUB DESK	DECK 4, Mid	5:00 PM - 10:00 PM
DISNEY VACATION PLANNING DESK	DECK 4, Mid	7:45 PM - 9:00 PM
FUNNEL VISION	DECK 9, Mid	SHOWTIMES
GUEST SERVICES	DECK 3, Mid	24 HOURS
HAIR BRAIDING	DECK 9, Mid	4:30 PM - 6:30 PM
MEDICAL HEALTH CENTER	DECK 1, Fwd	4:30 PM - 7:00 PM
PORT SHOPPING DESK	DECK 3, Mid	7:00 PM - 8:30 PM
PRELUDES	DECK 4, Fwd	SHOWTIMES
SENSES SPA AND SALON	DECK 9, Fwd	12:00 PM - 10:00 PM
SHUTTERS PHOTO GALLERY	DECK 4, Aft	6:00 PM - 10:00 PM
WALT DISNEY THEATRE	DECK 4, Fwd	SHOWTIMES

### SHOPPING

ART GALLERY	DECK 4, Mid	
BIBBIDI BOBBIDI BOUTIQUE	DECK 10, Fwd	12:00 PM - 3:00 PM
		5:00 PM - 9:00 PM
MICKEY'S MAINSAIL	DECK 4, Fwd	6:00 PM - 11:00 PM
QUACKS	DECK 9, Mid	
SEA TREASURES	DECK 3, Fwd	6:15 PM - 10:30 PM
WHITE CAPS	DECK 4, Fwd	6:00 PM - 11:00 PM

## TIME ZONE CHANGE

Remember to turn your clocks **FORWARD 1 HOUR**  
upon retiring **TONIGHT**,  
or first thing **TOMORROW** morning.



**EVENING ATTIRE**

Cruise Casual

**WEATHER** Today: Sunny  
**FORECAST** High: 72 F/22°C

## DINING & LOUNGES

### LUNCH

CABANAS	DECK 9, Aft	12:00 PM - 3:00 PM
DAISY'S DE-LITES	DECK 9, Aft	12:00 PM - 3:30 PM
PINOCCHIO'S PIZZERIA	DECK 9, Mid	12:00 PM - 3:30 PM
		4:30 PM - 6:00 PM
PETE'S BOILER BITES	DECK 9, Aft	12:00 PM - 3:30 PM
TRITON'S (A-LA CARTE)	DECK 3, Mid	11:45 AM - 1:30 PM

### DINNER

ANIMATOR'S PALATE	DECK 4, Aft	5:45 PM & 8:15 PM
DAISY'S DE-LITES	DECK 9, Aft	4:30 PM - 6:00 PM
PALO (18+)	DECK 10, Aft	6:00 PM - 8:30 PM
PETE'S BOILER BITES	DECK 9, Aft	4:30 PM - 9:30 PM
TIANA'S PLACE	DECK 3, Aft	5:45 PM & 8:15 PM
TRITON'S	DECK 3, Mid	5:45 PM & 8:15 PM

### LATE NIGHT SNACKS

CROWN & FIN PUB (18+ AFTER 9:00 PM)	DECK 3, Fwd	10:30 PM - 11:30 PM
PINOCCHIO'S PIZZERIA	DECK 9, Mid	9:30 PM - 12:00 AM
PROMENADE LOUNGE	DECK 3, Aft	10:30 PM - 11:30 PM

### ADDED FEATURES

BEVERAGE STATION	DECK 9, Aft, PORT SIDE	24 HOURS
EYE SCREAM	DECK 9, Mid	12:00 PM - 3:30 PM
		4:30 PM - 11:00 PM
ROOM SERVICE	DIAL 4330	OPENS AT 1:30 PM

### ENTERTAINMENT - LOUNGES - BARS

Adults must be 21 and older to consume alcoholic beverages.

AZURE (18+ AFTER 9:00 PM)	DECK 3, Fwd	7:30 PM - 1:00 AM
CADILLAC LOUNGE (18+)	DECK 3, Fwd	6:00 PM - 12:00 AM
COVE CAFE (18+)	DECK 9, Mid	11:45 AM - 12:00 AM
CROWN & FIN PUB (18+ AFTER 9:00 PM)	DECK 3, Fwd	11:45 AM - 12:00 AM
D LOUNGE	DECK 4, Mid	SHOWTIMES
PINOCCHIO'S PIZZERIA	DECK 9, Mid	11:45 AM - 12:00 AM
PRELUDES	DECK 4, Fwd	SHOWTIMES
PROMENADE LOUNGE	DECK 3, Aft	11:45 AM - 12:00 AM
SIGNALS (18+)	DECK 9, Fwd	11:45 AM - 10:00 PM
SULLY'S SIPS	DECK 9, Mid	11:45 AM - 5:30 PM

Public Health Advisory: Consuming raw or under-cooked meats, poultry, seafood, shellfish, or eggs may increase your risk for food borne illness, especially if you have certain medical conditions.

Disney Cruise Line.

# PORT ADVENTURES

Explore and more with our carefully selected  
Port Adventures. Visit the Port Adventures Desk,  
Deck 3, Midship to find out more.

## IMPORTANT NUMBERS

Fire/Security: 7-3001  
Medical EMERGENCY: 7-3000  
Health Center: 7-1927