

VOYAGE NAVIGATOR

FRIDAY
OCTOBER 5, 2018

TO

SATURDAY
OCTOBER 6, 2018

CRUISE HIGHLIGHTS

FRIDAY

SAN DIEGO, CALIFORNIA
Port Departure: 5:00 pm
All Aboard: 4:00 pm
Attire: Pirate or Cruise Casual

— THE —
**GOLDEN
MICKEYS**

THE GOLDEN MICKEYS
Walt Disney Theatre
6:15 pm & 8:30 pm

SATURDAY

ENSENADA, MEXICO
All Ashore: 8:15 am
All Aboard: 4:45 pm
Attire: Halloween or Cruise Casual

Disney
FROZEN
A MUSICAL SPECTACULAR

FROZEN, A MUSICAL SPECTACULAR
Walt Disney Theatre
6:00 pm & 8:30 pm

Subject to change.

WELCOME ABOARD!

YOUR STATEROOM & LUGGAGE

Staterooms will be ready at 1:30 pm. To allow your Stateroom Host/ess time to prepare your room, please do not remove the blue stanchion straps. Stateroom hosts will deliver luggage throughout the day until 5:30 pm.

STATEROOMS WITH BUNK BEDS

Bunk beds are recessed into the ceiling and will be prepared during evening turndown service by your Stateroom Host/ess.

STATEROOM SAFE

Each stateroom is equipped with a secured storage safe. Instructions for use are located on the safe.

TO CHANGE DINING ASSIGNMENT

Requests for different seating times will be taken today:

• 12:30 pm - 3:30 pm; Book in Promenade Lounge, Deck 3, Aft or please dial 7-10891 and leave a voicemail.

PALO DINING RESERVATIONS

Reservations are required and will be taken on a first come basis today:

• 12:30 pm - 3:30 pm; Book in Promenade Lounge, Deck 3, Aft or please dial 7-6843 and leave a voicemail.

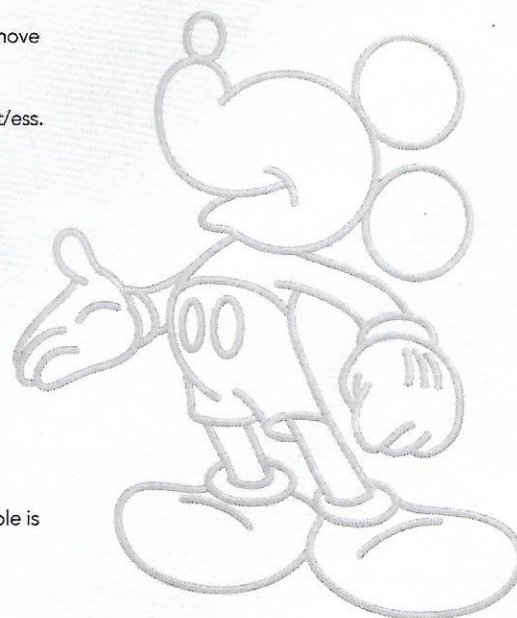
Adult Exclusive Dining Opportunity! Guests are invited to make 2 dinner reservations at our adult-exclusive restaurant, Palo. This includes one reservation on embarkation evening and one more on another night of the cruise. Reservations are subject to availability and a specialty dining charge will apply.

DINNER

5:45 pm - First seating 8:15 pm - Second seating

Please check your Key To The World Card for details of your dining rotation, and bring them to your specific dining location. There is no need to wait in line prior to dinner. Dining Rooms open at designated seating times and your table is reserved each night of your cruise.

AP = Animator's Palate, Deck 4, Aft TR = Triton's, Deck 3, Midship TP = Tiana's Place, Deck 3, Aft



Disney CRUISE LINE
PORT ADVENTURES

Create the most memorable experiences during your Disney Cruise Line vacation with Port Adventures! Our Port Adventures are designed for you to see the best our ports have to offer. Stop by the Port Adventures Desk, Deck 3, Midship where our friendly team will be happy to assist you plan your adventure!

There is an adventure for everyone on your Disney Wonder® vacation.

IMPORTANT NUMBERS

Fire/Security: 7-3001

Medical Emergency: 7-3000

Health Center: 7-1927

ADULT ACTIVITY HIGHLIGHTS

ART OF THE THEME SHOW TOUR

Join us for a guided tour highlighting the design, Imagineering and artistry of the ship. This tour is reserved for Guests 18 and over.

CRUISIN' SOLO GATHERING

Single, single parent or just traveling alone? Join your Cruise Staff for an informal gathering.

GAME SHOW: THE FEUD

"Survey Says" you'll have a fantastic time with our version of a classic game.



HALLOWEEN ISN'T JUST FOR KIDS

Flaunt your wild side and compete in our adults only costume contest. We hope to see you scaring up some fun on the dance floor. Trick or Treat isn't just for Kids...anymore.

INTUITION

Forget about skill! This hilarious adult game show is based upon your ability to use your intuition.

MAJORITY RULES

Join your Club Host to find out who really rules!



Senses Spa & Salon has a variety of seminars and fitness classes available throughout the cruise. Pamper yourself with therapeutic spa treatments of heat, steam, rain and water in luxurious and tranquil private rooms. Deck 9, Forward.

BEVERAGE SEMINARS

Your Beverage team has a host of tastings and seminars to entertain and educate you. Stop by Promenade Lounge, Deck 3, Aft to pre-book these experiences (nominal fee applies).

Mixology - Champagne Tasting
Beer Tasting - Cognac Tasting - Whisky Tasting



FUN FOR ALL AGES HIGHLIGHTS



ADVENTURES AWAY

Earn your status as V.I.P. sailors as your Cruise Director, your Disney Pals, and the Cruise Staff officially begin your "Adventures Away".

DISNEY ANIMATION

Our Cruise Staff teaches you how to draw some of your favorite Disney friends.

DISNEY TRIVIA

Navigate your way through a round of questions to test how much you really know about Disney.



DISNEY VACATION CLUB GROUP PREVIEW

Join us for our interactive group presentation to learn about taking magical vacations year after year! For more information, please see a Disney Vacation Club Cast Member on Deck 4, Midship, or call 7-2805 from your stateroom phone.

FAMILY CRAFTS

Create a fun souvenir with your Cruise Staff that is yours to keep.

FAMILY DANCE PARTY

Bring the whole family and dance your cares away to some of your favorite hits!



FAMILY SUPERSTAR KARAOKE

Join your Cruise Staff and sing along to your favorite song, fun for everyone.



FROZEN PHRASES

Contestants attempt to guess a series of words or phrases based on descriptions given to them by their teammates as they race against the clock in this Frozen themed game show.

HALLOWEEN BASH

Join your Cruise Staff and some of your favorite Disney pals for dancing, fun and another opportunity to show off your Halloween costume!



JACKPOT BINGO

CASH prizes and raffle prizes to be won in our family friendly Bingo sessions with your Cruise Staff. Those under the age of 18 must be accompanied by an adult to play!



MICKEY'S MOUSE-QUERADE PARTY

Enjoy a fun "Mouse-Querade" featuring music, games, a visit from some of your favorite Disney Pals in their Halloween costumes and of course treats.



PIRATES IN THE CARIBBEAN DECK PARTY

Yer Disney Friends are all set for a swashbucklin' good time! It's a Pirate Celebration, me hearties! Hoist yourself to Deck 9 to enjoy a rowdy buccaneer bash we call Pirates IN the Caribbean Deck Party.



THE PUMPKIN TREE

Join us in the Lobby Atrium for some frightening fun, as we celebrate Halloween with a spooky ceremony that will have you screaming with ghoulish delight.



'TIL WE MEET AGAIN

The world-famous Disney Characters and some of your new friends from the Disney Wonder stage shows bid you a charming farewell.



TIM BURTON'S THE NIGHTMARE BEFORE CHRISTMAS SING AND SCREAM

You're invited to a special presentation of Tim Burton's popular classic, presented in 3-D. Featuring state-of-the-art projection, sound and in-theatre effects, you become part of the experience, as you sing and scream along. You never know who may show up.

YOUTH ACTIVITIES INFO & HIGHLIGHTS



Dine & Play

As a convenience for families dining at 8:15 pm, our Youth Activities counselors will be available at the entrance of each restaurant to bring registered children to join the fun in the Youth Activities areas at the following times:

9:15 pm at the entrance of Triton's,
9:30 pm at the entrance of Tiana's Place and Animator's Palate.

Pre-School Fun

Disney's Oceaneer Club is reserved for only those between 3-5 years of age. This is a time for them to become acclimated to Disney's Oceaneer Club, make new friends and join in on a lot of fun-filled programs and activities. Please note after Pre-School Fun has concluded, Disney's Oceaneer Club will be open for Secured Programming for ages 3-12.

Youth Activities Open House

Open House is an opportunity for all to come and participate in a variety of exciting activities and free time in the Oceaneer Club, Oceaneer Lab, Edge and Vibe throughout the cruise. During these times secured programming will still be offered in the other venue for those looking to check their children into care.

Youth Activities Venue Tour

Come and take a tour of Disney's Oceaneer Club and Disney's Oceaneer Lab. This informative tour will give you the information you need to know about our exciting spaces and activities offered for children ages 3-12. Please see your Personal Navigator or the Navigator App for times.



3 - 12 years old

MILES' COSMIC EXPLORER ADVENTURES

Miles needs your help! Gadfly has stolen his tech, and it's up to you to solve clues and puzzles in order to return the missing items back to Miles.

ONCE UPON A TIME

Join our Storybook Maker for a magical, musical story featuring a Disney Princess!

SUPER HERO ORIGINS: SPIDER-MAN

Be a part of Spider-Man's origin, as he shares his history and how he learned that "with great power there must also come great responsibility".



3 - 12 years old

FINAL FAREWELL

Come and join in this end of cruise dance party for you to say, "See Ya Real Soon" to your new friends.

DETECTIVE SCHOOL

It's a crime how much fun you'll have as you go CSI Goofy style.

LAVA FLOW

Build your own volcano and watch it erupt as you learn about the physics of volcanoes.



11 - 14 years old

HEROES AND VILLAINS

Join your favorite hero or villain team on a series of activities that will take place throughout the cruise.

THAT'S HILARIOUS

Ever wanted to show off your comedy skills? Then be a part of the cast for the crazy improv show "That's Hilarious" and put on a live show for your friends.



14 - 17 years old

ANIMATION ANTICS

Learn simple animation techniques and then put your new skills to use by drawing some of your favorite Disney Characters.

MAKE A SHOW DISNEY STYLE

OPEN CALL - kids needed for a fun, one of a kind, make it your own show. Working in teams you'll have everything you need to make your own show in 90 minutes or less. Whether you're a Beauty or a Beast, you're sure to have fun!

BUENA VISTA THEATRE

Deck 5, Aft

FEATURE MOVIES THIS VOYAGE

FRIDAY - SAN DIEGO

1:45 pm	PG	Christopher Robin	Open Captioning
5:15 pm	PG	The Incredibles 2	
8:00 pm	PG	The Incredibles 2	
10:45 pm	PG-13	Ant-Man and the Wasp	3D

SATURDAY - ENSENADA

8:15 am	PG	Coco	
10:30 am	PG	Christopher Robin	
12:45 pm	PG	Ant-Man and The Wasp	
3:15 pm	PG	Christopher Robin	
5:30 pm	PG-13	Ant-Man and The Wasp	
8:00 pm	PG-13	Ant-Man and The Wasp	
10:30 pm	PG	The Incredibles 2	3D

WALT DISNEY THEATRE

Deck 4, Forward

FEATURE MOVIES THIS VOYAGE

SATURDAY - ENSENADA

10:00 am	PG	The Incredibles 2	
10:30 pm	PG	Tim Burton's The Nightmare Before Christmas	3D

Subject to change.

MORE TO ENJOY ONBOARD

NEW SPRING 2020 ITINERARIES

New Spring 2020 Itineraries announced! Experience sailings to the Caribbean, the Bahamas, Mexico, and Hawaii with your family! And for the very first time, sail from New Orleans to the Caribbean or Bahamas on Disney Wonder. Visit Disney Vacation Planning, Deck 4, Midship for more information. Disney Vacation Planning tends to get busy on the last day of sailing. Don't miss the opportunity to plan your next Disney vacation.

DISNEY CRUISE LINE SAILING FROM NEW ORLEANS

Set sail for the Caribbean or the Bahamas with Disney Cruise Line during February-March 2020 as Disney Wonder sails from New Orleans for the very first time! Visit the Disney Vacation Planning Desk, Deck 4, Midship for more information.

DISNEY VACATION CLUB® GROUP PREVIEW

Join us for our interactive group presentation to learn about taking magical vacations year after year! For more information, please see a Disney Vacation Club Cast Member on Deck 4, Midship, or call 7-2805 from your stateroom phone.

Connect@Sea

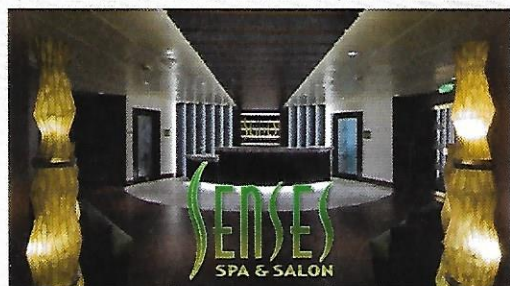
FREE INTERNET EMBARKATION DAY SPECIAL

Sign up for a free 50 MB Internet package today and enjoy it throughout the cruise! This offer is only available from noon to midnight on the day your cruise begins. On your wireless device, simply find the "DCL-Guest" Wi-Fi Network, go to www.dclguest.com to create an account, and get your free 50 MB of data to start sharing your memories even before you leave port! If you have any questions, ask our Connect@Sea Expert located at Deck 3, Midship. No purchase necessary. The free 50 MB package can only be used for the duration of the cruise. Only one free package per stateroom, but everyone can share it. Unused data from a package will not be reimbursed and it is non-transferable between voyages or ships.

RELIGIOUS SERVICES

Groups who need a location to practice their faith may contact Guest Services for availability information.

SENSES SPA & SALON



DECK 9, FORWARD
Extension 7-1465

RAINFOREST

Come enjoy our serenity lounge, with heated chairs, dry sauna, aromatherapy steam rooms and rainfall, misting showers. 2 Day Pass: Couples \$108 Single \$54

ONBOARD ACUPUNCTURE

Acupuncture is a safe and effective medicine that allows your body to heal itself, and is effective for various health conditions. See your onboard Acupuncturist for your free consultation.

IONITHERMIE

Lose between 1 – 8 inches. Speed up your metabolism. Firm muscle tone. Improve appearance of cellulite. \$155/1 session or \$299/3 sessions.

BIOTEC FACIALS

Our revolutionary facials address skin tone, blemishes and fine lines to transform the texture of the skin. The ultrasonic peel, massage and light therapy deliver a complexion that has never been smoother.

AN 18% AUTO GRATUITY IS ADDED TO ALL SENSES SPA SERVICES.

MERCHANDISE SHOPPING



DECK 4, FORWARD

TAG HEUER TIMEPIECES

Travel through time with TAG Heuer; and discover the luxury Swiss watchmaker's latest collection. Visit White Caps, Deck 4, Forward.

EFFY JEWELRY SPECIAL OFFER

The stylish Effy jewelry pieces are designed to allow you the opportunity to mix and match to create a look that's all your own. Receive a complimentary Effy scarf and jewelry pouch with each Effy jewelry purchase. While supplies last. White Caps, Deck 4, Forward.

BIBBIDI BOBBIDI BOUTIQUE

A makeover fit for a princess! Fairy Godmothers-in-Training are ready with magic and pixie dust to give your Prince and Princess the transformation of a lifetime. Make your reservations by visiting Bibbidi Bobbidi Boutique, Deck 10, Forward, Port Side, or dialing extension 7-10878. Limited space available.

DOONEY & BOURKE: CHARACTER EXPERIENCE

Dooney & Bourke bags are reborn in this new Disney Cruise Line Character Experience collection. With enhanced materials and more intricate designs, these new bags are sure to be an inspired addition to your collection. White Caps, Deck 4, Forward.

DUE TO PORT REGULATIONS, WHEN THE SHIP IS DOCKED, THE STORES WILL REMAIN CLOSED.

SHUTTERS PHOTO GALLERY



DECK 4, AFT

VIEW YOUR PHOTOS AT SHUTTERS

Use one of the kiosks at Shutters, Deck 4, Aft to view your vacation pictures, order digital packages or create a personalized PhotoBook!

GET THE PICTURE!

Take home all your stateroom photos from this cruise on a USB! Terms and conditions apply. Visit Shutters on Deck 4, Aft and ask your friendly Shutters staff for more information. Get The Picture! Hurry! Order yours now.

PERSONALIZED PHOTO PRODUCTS

Shutters offers customized photo products of your cruise for you to enjoy and share with family and friends. Stop by Shutters to view your options!

PRIVATE STUDIO PORTRAITURE

Book our exclusive and contemporary Private Studio experience today and capture these memories. No obligation to purchase. Black and White only.

PHOTOS ARE AVAILABLE FOR VIEWING ON OUR INTERACTIVE PHOTO KIOSKS APPROXIMATELY FIVE HOURS AFTER BEING TAKEN AND ARE ONLY AVAILABLE FOR PURCHASE DURING THIS CRUISE.

IMPORTANT INFORMATION

Security Notice/Unaccompanied Minor Ashore
All Guests (including children) who wish to disembark or embark the ship are required to present their Key to the World card at the gangway. A photo ID is also required for those Guests who are 18 years of age or older. Guests under the age of 18 are required to have a Parent, Guardian or other responsible adult complete the "Traveling with Minors" section of "My Online Check-In" prior to sailing or sign an authorization form at the Guest Services Desk if they wish to go ashore unaccompanied or with any adult from another stateroom.

Inclement Weather
For the safety of all Guests, outdoor events may be changed due to unforeseen weather conditions.
Insect Repellent Advisory
The Centers for Disease Control and Prevention recommends wearing long-sleeved shirts and pants along with insect repellent to protect against mosquito bites and related illnesses when going ashore. Complimentary insect repellent is available on the pier as you exit the ship. Insect repellent is also available for purchase in White Caps. When using both sunscreen and insect repellent, use sunscreen first and apply insect repellent on top of sunscreen.

Corridor Quiet Hours
As a courtesy to all our Guests, please recognize quiet hallway hours from 10:00 pm to 8:00 am.

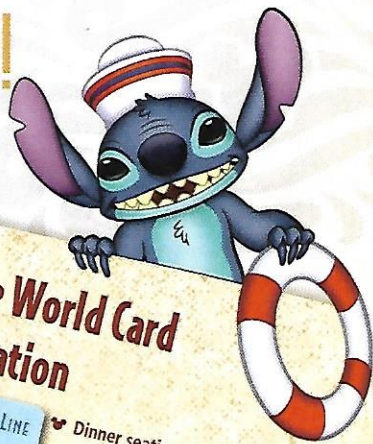
No Reserved Seats Policy
As a courtesy to all our Guests, we kindly advise that the saving of seats is not permitted in the Walt Disney Theatre, and the saving of the sun loungers is not permitted on Deck 9 and 10. Items left unattended will be returned to lost and found at Guest Services, Deck 3 Midship.

Cold and Flu Reminder
Please wash hands frequently and thoroughly, particularly before meals. Contact the Health Center by dialing 7-1927, should anyone in your party become ill.

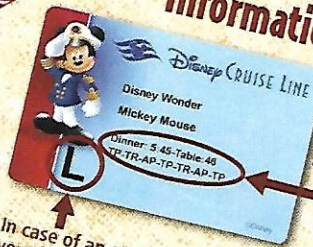
Smoking
For the comfort of our Guests, the following areas are designated as smoking areas:
*Deck 9, Forward, Port Side
*Deck 4, Starboard side from 6:00 pm to 6:00 am only (all of Deck 4 is non-smoking from 6:00 am to 6:00 pm)
Smoking is prohibited inside all Guest staterooms and on stateroom verandahs. Guests found smoking in their staterooms or on their verandahs will be charged a \$250 stateroom recovery fee. Electronic cigarettes may only be used in designated smoking areas.

Walt Disney Theatre
Theatrical performances may use artificial fog, strobe lights, pyrotechnics and other special effects. For the safety of our performers, and the comfort of those around you, the use of any photography, video recording device or any electronic equipment is prohibited.
Verandah Safety
Please do not leave any personal items on your verandah that may be blown onboard or present a fire hazard if left unattended. Do not throw anything over the ship's side. Guests should not sit, lean or climb on the railing or leave children unattended on the verandah. Do not open the verandah and stateroom doors simultaneously as this may create a wind effect and could cause the doors to slam unexpectedly.

WELCOME ABOARD!



Key to the World Card Information







In case of an emergency, your lettered Assembly Station is indicated here.

- Dinner seatings are 5:45 pm or 8:15 pm.
- Your table number for the cruise is located after your dinner seating.
- Dinner locations and rotation are indicated by letters under your dinner time.
AP - Animator's Palate, Deck 4, Aft
TR - Triton's, Deck 3, Midship
TP - Tiana's Place, Deck 3, Aft

Earn your status as V.I.P. sailors as your Cruise Director, Natalie, your Disney Pals, and the Cruise Staff officially begin your "Adventures Away".

Deck 9 Stage: 4:30 pm

Morning	12:00	12:15	12:30	12:45	1:00	1:15	1:30
FUN FOR ALL AGES			Family Crafts D Lounge			Animation: Stitch D Lounge	
			Poolside Jams with Cruise Staff DJ Deck 9 Stage				
ADULTS	Spa Open House Senses Spa Fitness Center						
VIBE 14-17 YEARS OLD	Youth Activities Open House 						
EDGE 11-14 YEARS OLD	Youth Activities Open House 						
OCEANEER LAB 3-12 YEARS OLD	Youth Activities Open House 						
OCEANEER CLUB 3-12 YEARS OLD	Youth Activities Open House 						

Afternoon	1:45	2:00	2:15	2:30	2:45	3:00	3:15	3:30	3:45	4:00	4:15	4:30	4:45	5:00	5:15	5:30	5:45	6:00	6:15	6:30	6:45
FUNNEL VISION	Toy Story (G) Open Captioning Funnel Vision											Adventures Away Funnel Vision									
BUENA VISTA THEATRE	Christopher Robin (PG) Open Captioning Duration: 1 Hour 44 Minutes											Peter Pan (G) Open Captioning Funnel Vision									
CHARACTERS	Join the Lion Guard Oceaneer Club											The Incredibles 2 (PG) Duration: 1 Hour 58 Minutes									
FUN FOR ALL AGES	Disney Trivia D Lounge											Mickey DK4 Mid (S)									
ADULTS	Guitar Melodies Quiet Cove Pool											Pluto DK4 Mid (S)									
VIBE 14-17 YEARS OLD	Spa Open House Senses Spa Fitness Center											Disney Songs with Supernova Duo Promenade Lounge									
EDGE 11-14 YEARS OLD	Youth Activities Open House & Registration											Jewish Sabbath Cadillac Lounge (Guest Led)									
OCEANEER LAB 3-12 YEARS OLD	Youth Activities Open House & Registration											Cruisin' Solo Gathering Cove Cafe									
OCEANEER CLUB 3-12 YEARS OLD	Youth Activities Open House & Registration											Footprint Analysis Senses Spa Fitness Center									
	Join the Lion Guard Open House											Youth Activities Open House									
	Crafts: 3D DCL Ship Crafts D Lounge											Youth Activities Open House									
	Youth Activities Tour											Meet Your Counselors									
	Spa Raffle Senses Spa Fitness Center											Pirate Games									
	Guitar Melodies Quiet Cove Pool											Youth Activities Open House & Registration									
	Spa Raffle Senses Spa Fitness Center											Pre-School Fun (3-5 Years Old)									

Mandatory Guest Assembly Drill 4:00 pm

(All Guests must attend)

All ship services will be suspended during this time.

Refer to the posted drill instructions on the back of your stateroom door prior to heading to Deck 4. Please bring your Key to the World Card.

You will not need your life jacket for the Guest Assembly Drill.



Your Assembly Station is indicated on your Key To The World card.



Evening	7:00	7:15	7:30	7:45	8:00	8:15	8:30	8:45	9:00	9:15	9:30	9:45	10:00	10:15	10:30	10:45	11:00	11:15	11:30	11:45	12:00
FUNNEL VISION	Muppet Treasure Island (G) Open Captioning Funnel Vision												Pirates IN the Caribbean Deck Party Funnel Vision								
BUENA VISTA THEATRE	The Incredibles 2 (PG) Duration: 1 Hour 58 Minutes												Ant-Man and the Wasp (PG-13)								
CHARACTERS	Minnie DK4 Mid (S)												Mickey DK4 Mid (S)								
FUN FOR ALL AGES	Bingo Pre Sales												Pirates IN the Caribbean Party!								
	The Family Dance Party Promenade Lounge												Sunset Tunes with Supernova Duo Promenade Lounge								
ADULTS	80's Music Trivia Crown & Fin Pub												Music Video Dance Party Azure								
	Disney Vacation Club Member Celebration D Lounge												Majority Rules Azure								
VIBE 14-17 YEARS OLD	Cards Tournament												Heroes and Villains								
EDGE 11-14 YEARS OLD	GAGA Ball												Heroes and Villains								
OCEANEER LAB 3-12 YEARS OLD	Pirate Games												GAGA Ball								
OCEANEER CLUB 3-12 YEARS OLD	Pirate Prep												Wii Challenge								
	Treasure Hunt												Lava Flow								
	Once Upon a Time												Color Yourself Heroic								
	Welcome Party												MARVEL Super Hero Academy Avengers Assemble								

Sunken Treasure (Alcoholic)
Parrot Song (Non-Alcoholic)

DRINK OF THE DAY

Fold along the dotted lines and take me with you so you don't miss any of the fun!

FOLD

YOUTH ACTIVITIES OPEN HOUSE
A non-secured program with activities for families, adults and children to enjoy together.



THE GOLDEN MICKEYS

WALT DISNEY THEATRE

Deck 4, Forward

6:15 pm & 8:30 pm

As a courtesy to all Guests, we kindly advise that the saving of seats is **not** permitted in the Walt Disney Theatre.

Assistance is available at the entrance to the Walt Disney Theatre 30 minutes prior to show time.

Character Appearances

JOIN THE LION GUARD

Disney's Oceaneer Club - 2:00 pm

ADVENTURES AWAY

Deck 9 Stage - 4:30 pm

MICKEY MOUSE

DK4 Mid (S)
5:15 pm & 8:15 pm

PLUTO

DK4 Mid (S) - 5:45 pm

MINNIE MOUSE

DK4 Mid (S) - 7:45 pm

PIRATES IN THE CARIBBEAN DECK PARTY

Deck 9 Stage - 10:00 pm



(S) Starboard Side - (P) Port Side

For details of daily Disney character appearances, refer to the character line on your Navigator Grid, or the digital character board in the Lobby Atrium. Lines close 15 minutes after advertised start time.

SHIP DIRECTORY

YOUTH ACTIVITIES

DISNEY'S OCEANEER CLUB	DECK 5, MID	12:00 PM - 3:30 PM 4:30 PM - 12:00 AM
DISNEY'S OCEANEER LAB	DECK 5, MID	12:00 PM - 3:30 PM 4:30 PM - 12:00 AM
EDGE	DECK 9, MID	12:00 PM - 3:30 PM 4:30 PM - 12:00 AM
IT'S A SMALL WORLD NURSERY	DECK 5, AFT	12:00 PM - 3:30 PM 4:30 PM - 11:00 PM
VIBE	DECK 10, MID	12:00 PM - 3:30 PM 4:30 PM - 12:00 AM

POOLS

Children under 12 years of age must have adult supervision in all pools.

AQUA LAB	DECK 9, AFT	12:00 PM - 3:30 PM 4:30 PM - 8:00 PM
DORY'S REEF	DECK 9, AFT	12:00 PM - 3:30 PM 4:30 PM - 8:00 PM
GOOFY'S POOL	DECK 9, MID	12:00 PM - 3:30 PM 6:00 PM - 8:00 PM
QUIET COVE POOL (18+)	DECK 9, FWD	12:00 PM - 3:30 PM 4:30 PM - 11:00 PM
TWIST N' SPOUT	DECK 9, AFT	12:00 PM - 3:00 PM 4:30 PM - 7:00 PM

Please note, "selfie sticks" are not permitted in any aquatic area. Complimentary pool vests are available for children to use in the pools onboard. They are located on the pool deck.

RECREATION

CHILL SPA	DECK 9, FWD	12:00 PM - 10:00 PM
PORT ADVENTURES DESK	DECK 3, MID	12:00 PM - 3:30 PM 4:30 PM - 10:00 PM
SENSES FITNESS CENTER (18+)	DECK 9, FWD	11:30 AM - 10:00 PM
WIDE WORLD OF SPORTS DECK	DECK 10, FWD	12:00 PM - 3:30 PM 4:30 PM - 11:59 PM

GENERAL INFORMATION

BUENA VISTA THEATRE	DECK 5, AFT	SHOWTIMES
CONNECT@SEA DESK	DECK 3, AFT	1:00 PM - 4:00 PM 7:00 PM - 10:00 PM
DISNEY VACATION CLUB DESK	DECK 4, MID	12:30 PM - 3:00 PM 9:00 PM - 10:00 PM
DISNEY VACATION PLANNING DESK	DECK 4, MID	5:45 PM - 9:00 PM
FUNNEL VISION	DECK 9, MID	SHOWTIMES
GUEST SERVICES	DECK 3, MID	24 HOURS
HAIR BRAIDING	DECK 9, MID	4:00 PM - 6:00 PM
MEDICAL HEALTH CENTER	DECK 1, FWD	4:30 PM - 7:00 PM
PRELUDES	DECK 4, FWD	SHOWTIMES
SENSES SPA AND SALON	DECK 9, FWD	11:30 AM - 10:00 PM
SHUTTERS PHOTO GALLERY	DECK 4, AFT	6:00 PM - 10:30 PM
WALT DISNEY THEATRE	DECK 4, FWD	SHOWTIMES

SHOPPING

ART GALLERY	DECK 4, MID	
BIBBIDI BOBBIDI BOUTIQUE	DECK 10, FWD	12:00 PM - 3:00 PM 5:00 PM - 9:00 PM
MICKEY'S MAINSAIL	DECK 4, FWD	6:00 PM - 11:00 PM
QUACKS	DECK 9, MID	
SEA TREASURES	DECK 3, FWD	6:30 PM - 10:00 PM
WHITE CAPS	DECK 4, FWD	6:00 PM - 11:00 PM

EVENING ATTIRE

Pirate or Cruise Casual

WEATHER Today: Partly Sunny
FORECAST High: 72°F/22°C

DINING & LOUNGES

LUNCH

CABANAS	DECK 9, AFT	12:00 PM - 3:00 PM
DAISY'S DE-LITES	DECK 9, AFT	12:00 PM - 3:30 PM
PETE'S BOILER BITES	DECK 9, AFT	12:00 PM - 3:30 PM
PINOCCHIO'S PIZZERIA	DECK 9, MID	12:00 PM - 3:30 PM
TRITON'S (A-LA CARTE)	DECK 3, MID	11:45 AM - 1:30 PM

DINNER

ANIMATOR'S PALATE	DECK 4, AFT	5:45 PM & 8:15 PM
DAISY'S D- LITES	DECK 9, AFT	4:30 PM - 6:00 PM
PALO (18+)	DECK 10, AFT	6:00 PM - 8:30 PM
PETE'S BOILER BITES	DECK 9, AFT	4:30 PM - 9:00 PM
PINOCCHIO'S PIZZERIA	DECK 9, MID	4:30 PM - 6:00 PM
TIANA'S PLACE	DECK 3, AFT	5:45 PM & 8:15 PM
TRITON'S	DECK 3, MID	5:45 PM & 8:15 PM

LATE NIGHT SNACKS

CABANAS PIRATE BUFFET	DECK 9, AFT	10:30 PM - 11:15 PM
PINOCCHIO'S PIZZERIA	DECK 9, MID	9:00 PM - 12:00 AM

ADDED FEATURES

BEVERAGE STATION	DECK 9, AFT, PORT SIDE	24 HOURS
EYE SCREAM	DECK 9, MID	12:00 PM - 3:30 PM 4:30 PM - 11:00 PM
ROOM SERVICE	DIAL 4330	OPENS AT 1:30 PM

ENTERTAINMENT - LOUNGES - BARS

Adults must be 21 and older to consume alcoholic beverages.

AZURE (18+ AFTER 9:00 PM)	DECK 3, FWD	7:30 PM - 1:30 AM
CADILLAC LOUNGE (18+)	DECK 3, FWD	6:00 PM - 12:00 AM
COVE CAFE (18+)	DECK 9, MID	11:45 AM - 12:00 AM
CROWN & FIN PUB (18+ AFTER 9:00 PM)	DECK 3, FWD	11:45 AM - 12:00 AM
D LOUNGE	DECK 4, MID	SHOWTIMES
PINOCCHIO'S PIZZERIA	DECK 9, MID	11:45 AM - 12:00 AM
PRELUDES	DECK 4, FWD	SHOWTIMES
PROMENADE LOUNGE	DECK 3, AFT	11:45 AM - 12:00 AM
SIGNALS (18+)	DECK 9, FWD	11:45 AM - 10:30 PM
SULLY'S SIPS	DECK 9, MID	11:45 AM - 5:30 PM

Public Health Advisory: Consuming raw or under-cooked meats, poultry, seafood, shellfish, or eggs may increase your risk for food borne illness, especially if you have certain medical conditions.

Disney CRUISE LINE.
PORT ADVENTURES

Explore and more with our carefully selected Port Adventures. Visit the Port Adventures Desk, Deck 3, Midship to find out more.

IMPORTANT NUMBERS

Fire/Security: 7-3001
Medical EMERGENCY: 7-3000
Health Center: 7-1927