

# VOYAGE NAVIGATOR

THURSDAY  
OCTOBER 4, 2018  
TO  
TUESDAY  
OCTOBER 9, 2018



## CRUISE HIGHLIGHTS

**THURSDAY**  
NEW YORK, NEW YORK  
Port Departure: 5:00 pm  
All Aboard: 4:00 pm  
Attire: Cruise Casual

**FRIDAY**  
DAY AT SEA  
Attire: Halloween or Cruise Casual

**SATURDAY**  
KING'S WHARF, BERMUDA  
All Ashore: 10:00 am  
Attire: Cruise Casual



**TANGLED: THE MUSICAL**  
Walt Disney Theatre  
6:15 pm & 8:30 pm



**SHOWTIME: MICHAEL HARRISON**  
Walt Disney Theatre  
6:15 pm & 8:30 pm



**TWICE CHARMED**  
Walt Disney Theatre  
6:15 pm & 8:30 pm

**SUNDAY**  
KING'S WHARF, BERMUDA

All Aboard: 3:30 pm  
Attire: Pirate or Cruise Casual

**MONDAY**  
DAY AT SEA  
Attire: Cruise Casual



**SHOWTIME: MARCUS MONROE**  
Walt Disney Theatre  
6:15 pm & 8:30 pm



**DISNEY DREAMS: AN ENCHANTED CLASSIC**  
Walt Disney Theatre  
6:15 pm & 8:30 pm

Subject to change.

## WELCOME ABOARD!

### YOUR STATEROOM & LUGGAGE

Staterooms will be ready at 1:30 pm. To allow your Stateroom Host/ess time to prepare your room, please do not remove the blue stanchion straps. Stateroom hosts will deliver luggage throughout the day until 5:30 pm.

### STATEROOMS WITH BUNK BEDS

Bunk beds are recessed into the ceiling and will be prepared during evening turndown service by your Stateroom Host/ess.

### STATEROOM SAFE

Each stateroom is equipped with a secured storage safe. Instructions for use are located on the safe.

### TO CHANGE DINING ASSIGNMENT

Requests for different seating times will be taken today:  
12:30 pm - 3:00 pm; Book in Promenade Lounge, Deck 3, Aft or please dial 7-1831 and leave a voicemail.

### PALO DINING RESERVATIONS

Reservations are required and will be taken on a first come basis today:  
12:30 pm - 3:00 pm in Promenade Lounge, Deck 3, Aft, or please dial 7-6843 and leave a voicemail.

**Adult Exclusive Dining Opportunity!** Guests are invited to make 2 dinner reservations at our adult-exclusive restaurant, Palo. This includes one reservation on embarkation evening and one more on another night of the cruise.

### DINNER

6:00 pm - First seating      8:30 pm - Second seating  
Please check your Key To The World Card for details of your dining rotation, and bring it to your specific dining location. There is no need to wait in line prior to dinner. Dining Rooms open at designated seating times and your table is reserved each night of your cruise.

A = Animator's Palate, Deck 4, Aft      L = Lumière's, Deck 3, Midship      R = Rapunzel's Royal Table, Deck 3, Aft

DOWNLOAD THE NEW  
**DISNEY CRUISE LINE NAVIGATOR APP**  
BEFORE YOU SAIL AWAY

Available on iOS and Android



Create the most memorable experiences during your Disney Cruise Line vacation with Port Adventures! Our Port Adventures are designed for you to see the best our ports have to offer. Stop by the Port Adventures Desk, Deck 3, Midship where our friendly team will be happy to assist you plan your adventure!  
There is an adventure for everyone on your Disney Magic® vacation.

# ADULT ACTIVITY HIGHLIGHTS



**1820 SOCIETY (GUESTS 18-20 YEARS ONLY)**  
1820 Society is an exclusive option for young adult Guests. Come meet fellow passengers and learn about the excellent activities that the Disney Magic offers to create the perfect cruise experience.



**80'S FLASHBACK**  
The 80's are back! Join your Cruise Staff team, in testing your 80's knowledge in this high energy 80's revival.



**KRAZY KARAOKE**  
Take to the stage, grab a microphone and sing your favorite tunes with your Club Host and DJ.



**MATCH YOUR MATE**  
It's time to play everyone's favorite couples game show, Match Your Mate!



*Senses Spa & Salon has a variety of seminars and fitness classes available throughout the cruise. Pamper yourself with therapeutic spa treatments of heat, steam, rain and water in luxurious and tranquil private rooms. Deck 9, Forward.*

## BEVERAGE SEMINARS

Your Beverage team has a host of tastings and seminars to entertain and educate you. Stop by Promenade Lounge, Deck 3, Aft, 12:00 - 3:00 pm or Guest Services, Deck 3, Midship after today to pre-book these experiences (nominal fee applies).

- Stem to Stern Wine Tasting -
- Cognac Tasting - Whisky Tasting -
- Tequila & Margarita Tasting -

# FUN FOR ALL AGES HIGHLIGHTS



**ADVENTURES AWAY**  
Earn your status as V.I.P. sailors as your Cruise Director, your Disney Pals, and the Cruise Staff officially begin your "Adventures Away".



**A PIRATE'S LIFE FOR ME**  
Calling all Pirates, we be! If ye have an adventurous spirit or pirate savvy, come spin the "Wheel of Destiny" fer a treasure trove of fun be ripe for the taking in this action packed pirate game show.



**DISNEY VACATION CLUB GROUP PREVIEW**  
Join us for our interactive group presentation to learn about taking magical vacations year after year! For more information, please see a Disney Vacation Club Cast Member on Deck 4, Midship, or call 7-2805 from your stateroom phone.



**JACK-JACK'S INCREDIBLE DIAPER DASH**  
Calling all baby cruisers! It's time to take to the mat to see who's the fastest crawler of the seven seas! Register your baby 15 minutes prior to the big race.



**JACKPOT BINGO**  
CASH prizes and raffle prizes to be won in our family friendly Bingo sessions with your Cruise Staff. Those under the age of 18 must be accompanied by an adult to play.



**PIRATES IN THE CARIBBEAN DECK PARTY**  
Yer Disney Friends are all set for a swashbucklin' good time! It's a Pirate Celebration, me hearties! Hoist yourself to Deck 9 to enjoy a rowdy buccaneer bash we call Pirates IN the Caribbean Deck Party. (Weather Permitting)



**SO YOU THINK YOU KNOW YOUR FAMILY?**  
This fun-filled family game show is always full of surprises. Find out how well you know, or don't know your family!



**THE INSIDE OUT GAME**  
Make new memories using the memories you already have. Embrace joy and play against anger, fear & disgust in this one-of-a-kind game show based on the Pixar movie Inside Out!

## FEATURED VARIETY ACTS THIS VOYAGE



**THE VENTRILOQUISM & COMEDY OF MICHAEL HARRISON**  
Michael Harrison is an extraordinarily talented ventriloquist, puppeteer and comedian. He has worked alongside numerous acts from The Muppets to Boyz 2 Men. Michael wrote and starred in the award winning television show, "Kids in the Firehall," which was awarded the prestigious Bronze Apple Award. Recently, he took his talents to a new level and appeared on "America's Got Talent" & finished as one of the finalists.



**THE PHYSICAL COMEDY OF MARCUS MONROE**  
Marcus Monroe is a New York City based award winning comedian and juggler. His show is a high-energy blend of innovative juggling with in your face comedic banter riddled with awkwardness. He is the recipient of the prestigious Andy Kaufman Award and has recently appeared on The Late Show, HBO, MTV, Netflix and Comedy Central. The New York Times calls Marcus "one of the most entertaining performers to watch in New York City."

## HALLOWEEN ON THE HIGH SEAS HOLIDAY HIGHLIGHTS



**HAUNTED STORIES OF THE SEA**  
Join our Sea Captain for the Halloween tradition of telling ghostly tales of the strange, bizarre and just plain scary that will leave even the bravest of souls with a chill.



**HALLOWEEN ISN'T JUST FOR KIDS (18+)**  
The trendy dance club for adults becomes the hangout for the dark side of Disney. Flaunt your wild side and compete in our adults only costume contest. We hope to see you scaring up some fun on the dance floor. Trick or Treat isn't just for Kids...anymore.



**MICKEY'S MOUSE-QUERADE PARTY**  
Enjoy a fun trick or treat "Mouse-Querade" featuring music, games, a visit from some of your favorite Disney Pals in their Halloween costumes and of course treats. Please remember, masks that completely cover a person's face may only be worn when standing still at character photo locations and must be carried when moving around the ship. We also ask that you choose costumes that are not obstructive or offensive.



**THE PUMPKIN TREE**  
Do you know why we celebrate Halloween or carve jack-o-lanterns? Join the Caretaker at the Pumpkin Tree, and hear some fun stories and customs of Halloween.



**TIM BURTON'S THE NIGHTMARE BEFORE CHRISTMAS SING AND SCREAM**  
You're invited to a special presentation of Tim Burton's popular classic, presented in 3-D. Featuring state-of-the-art projection, sound and in-theatre effects, you become part of the experience, as you sing and scream along. You never know who may show up.

Please check your daily Personal Navigator for all times and locations.

# YOUTH ACTIVITIES INFO & HIGHLIGHTS



## Dine & Play

As a convenience for families dining at 8:15 pm, our Youth Activities Counselors will be available at 9:30 pm at the entrance of Lumiere's and at 9:45 pm at the entrance of Animator's Palate and Rapunzel's Royal Table to bring registered children to join the fun in Disney's Oceaneer Club and Disney's Oceaneer Lab.

### Youth Activities Open House

Open House is an opportunity for all to come and participate in a variety of exciting activities and free time in the Oceaneer Club, Oceaneer Lab, Edge and Vibe throughout the cruise. During these times secured programming will still be offered in the other venue for those looking to check their children into care.

### Youth Activities Venue Tour

Come and take a tour of Disney's Oceaneer Club and Disney's Oceaneer Lab. This informative tour will give you the information you need to know about our exciting spaces and activities offered for children ages 3-12. Please see your Personal Navigator or the Navigator App for times.

3 - 12 years old

### STITCH'S GREAT ADVENTURE

Stitch needs your help in trying to capture ten of his lost cousins before they cause all kinds of problems on the ship!

### MICKEY'S PUZZLE PLAYTIME

Come and play with Mickey & friends as they share their favorite games, puzzles and dances!

### DISNEY ROYAL ACADEMY

Hear ye! Hear ye! All boys and girls are invited to become part of the Oceaneer Royal Court. Learn all about your favorite Disney Prince and Princesses, create your own royal garb and become one of the most powerful in the land. Disney Royal Academy is in session!

3 - 12 years old

### SUPER SLOPPY SCIENCE

Join Professor Make-O-Mess in some of the most extreme experiments you will ever see in the world of Super Sloppy Science!

### PLUTO'S PAJAMA PARTY

Bring the little ones in their pajamas but there will be anything but sleep when Pluto and friends host the ultimate slumber party!

### PISTON CUP

It's Dinoco time and you're part of the pit crew! Design your own race car and see if you've got what it takes to end up in the winner's circle!

11 - 14 years old

### HEROES VS. VILLAINS

Join your favorite hero or villain team on a series of activities that will take place throughout the cruise.

### THAT'S HILARIOUS

Ever wanted to show off your comedy skills? Then be a part of the cast for the crazy improv show "That's Hilarious" and put on a live show for your friends.

14 - 17 years old

### HAUNTED MANSION FAMILY PORTRAITS

Grim grinning ghosts come out to socialize as teens get transformed in a ghoulish photo shoot that is guaranteed to bring the spooks out for a swinging wake!

### HOMECOMING

Come and join your fellow teens in our very own version of "Homecoming" and dance the night away.

# BUENA VISTA THEATRE

Deck 5, Midship

## FEATURE MOVIES THIS VOYAGE

### THURSDAY - NEW YORK, NEW YORK

5:30 pm	PG	The Incredibles 2	
8:15 pm	PG	The Incredibles 2	
10:45 pm	PG-13	Solo: A Star Wars Story	

### FRIDAY - DAY AT SEA

8:30 am	PG	Family Movie Fun Time: The Incredibles 2	
12:15 pm	PG-13	Ant-Man and the Wasp	
2:45 pm	PG-13	Avengers: Infinity War	
5:45 pm	PG-13	Ant-Man and the Wasp	
8:15 pm	PG-13	Ant-Man and the Wasp	
10:45 pm	PG	Christopher Robin	

### SATURDAY - KING'S WHARF, BERMUDA

10:00 am	PG	Christopher Robin	
12:15 pm	PG-13	Black Panther	
3:15 pm	PG	The Incredibles 2	
5:45 pm	PG	Christopher Robin	
8:15 pm	PG	Christopher Robin	
10:30 pm	PG-13	Avengers: Infinity War	

### SUNDAY - KING'S WHARF, BERMUDA

9:30 am	PG-13	Ant-Man and the Wasp	
11:45 am	PG-13	Black Panther	
2:45 pm	PG-13	Solo: A Star Wars Story	
5:30 pm	PG	The Incredibles 2	
8:15 pm	PG	The Incredibles 2	
11:00 pm	PG-13	Ant-Man and the Wasp	

### MONDAY - DAY AT SEA

9:30 am	PG	Christopher Robin	
11:45 am	PG	The Incredibles 2	
2:30 pm	PG-13	Solo: A Star Wars Story	
5:30 pm	PG-13	Ant-Man and The Wasp	
8:15 pm	PG-13	Ant-Man and The Wasp	
10:45 pm	PG	Christopher Robin	

Subject to change.

## COSTUME INFORMATION

All Guests are encouraged to dress up in their own costumes for special Halloween on the High Seas voyages, Marvel Day at Sea, and Pirate Night; however, the following guidelines should be followed when selecting a costume:

- Masks that completely cover a person's face may only be worn when standing still at character photo locations and must be carried when moving around the ship.
- Guests should choose costumes that are family friendly, not obstructive, objectionable, offensive nor violent.
- Guests may dress as their favorite character, but may not pose for pictures or sign autographs.
- To avoid any disappointment or delay in the boarding process, Guests should refrain from bringing toys or props that resemble guns, knives or other related implements, as these items will not be allowed onboard.
- Masks are strictly prohibited during the boarding process as identity must be verified.
- Guests failing to comply with costume guidelines onboard may be removed from events unless their costume can be modified.



# MORE TO ENJOY ONBOARD

## NEW SPRING 2020 ITINERARIES

New Spring 2020 Itineraries announced! Experience sailings to the Caribbean, the Bahamas, Mexico, and Hawaii with your family! And for the very first time, sail from New Orleans to the Caribbean or Bahamas on Disney Wonder. Visit Disney Vacation Planning, Deck 4, Midship for more information. Disney Vacation Planning tends to get busy on the last day of sailing. Don't miss the opportunity to plan your next Disney vacation.

## DISNEY VACATION CLUB® GROUP PREVIEW

Join us for our interactive group presentation to learn about taking magical vacations year after year! For more information, please see a Disney Vacation Club Cast Member on Deck 4, Midship, or call 7-2805 from your stateroom phone.

## PORT SHOPPING INFORMATION

Meet Saige, your Port Shopping Guide, for hints, tips and know how when it comes to shopping ashore this cruise! Saige has great recommendations for the whole family and will show you how to maximize your time in our ports of call with money saving tips! Visit Saige at the Port Shopping Desk, Deck 3, Midship between 7:30 pm & 8:30 pm tonight for a free gift.

## Connect @ Sea

### CONNECT@SEA

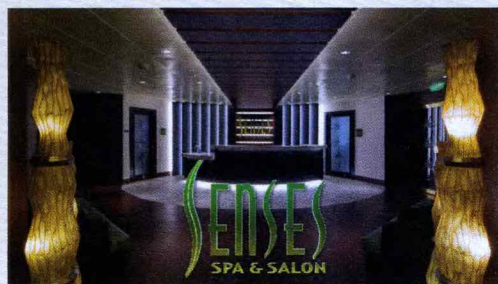
We are now offering a NEW and improved Internet service to stay connected on your cruise like no other in the industry! Internet packages range from \$0.25 per MB - \$89.00 (1000 MB package). For more information contact your Connect@Sea Expert or Guest Services onboard. Possible service interruptions due to area configuration.

### RELIGIOUS SERVICES

Groups who need a location to practice their faith may contact Guest Services for availability information.



## SENSES SPA & SALON



**DECK 9, FORWARD**  
Extension 7-1465

### RAINFOREST

Come enjoy our serenity lounge, with heated chairs, dry sauna, aromatherapy steam rooms and rainfall, misting showers.

Couples Cruise Pass - \$169 ~ Single Cruise Pass - \$114

### IONITHERMIE

Lose between 1 – 8 inches? Speed up your metabolism. Firm muscle tone. Improve appearance of cellulite. \$155/1 session or \$388/3 sessions.

### ONBOARD ACUPUNCTURE

Naturally effective for pain, arthritis, sea sickness, stress, digestion, weight loss, and much more.

\$150/session or \$550/5 sessions.

### ELEMIS BIOTEC

8 different Facial treatments available based on your specific concerns or needs. Technology turbo charges the concept of touch. The clinically proven result is visibly healthy, nourished and energized skin.

### REJUVENATION SPA CONSULTATIONS

Ready to enhance your natural beauty? Book your free Facial Rejuvenation consultation with our Rejuvenation Doctor at the Senses Spa.

## MERCHANDISE SHOPPING



**DECK 4, FORWARD**

### THE CROWN JEWELRY

Visit The Crown Jewelry, located on Deck 4, Midship, to discover stylish timepieces and fine jewelry. Discover the Crown of Light Diamonds, Safi Kilima Tanzinites and John Hardy's handcrafted jewelry, as well as luxury watches by Hublot and Breitling.

### HELPFUL SHOPPING TIP

While shopping onboard, you may collect your items from both stores before proceeding to checkout at any register. No need to have to wait in line in each store to pay for your items separately! Mickey's Mainsail and White Caps, Deck 4, Forward.

### BIBBIDI BOBBIDI BOUTIQUE

A makeover fit for a princess! Fairy Godmothers-in-Training are ready with magic and pixie dust to give your Prince and Princess the transformation of a lifetime. Make your reservations by visiting Bibbidi Bobbidi Boutique, Deck 10, Forward, Port Side, or dialing extension 7-1492. Limited space available.

## SHUTTERS PHOTO GALLERY



**DECK 4, AFT**

### WELCOME ABOARD RAFFLE

Your embarkation photos will be available for viewing at 6:30pm. Visit Shutters on Deck 4 AFT and drop your raffle coupon for a chance to win a 10 Digital Photo package with a \$149.95 value.

### OUR CRUISE PHOTOS DIGITAL!

Ask a friendly photographer about our Cruise digital Photos! And the incredible value of an All Inclusive digital photo package, which includes all of your stateroom's photos. Visit Shutters today as supplies are limited. \*Terms and conditions apply.

### PRIVATE STUDIO PORTRAITURE

Book our exclusive and contemporary Private Studio experience today and capture these memories. No obligation to purchase. Black and White only.

### PHOTO BOOK

Turn your magical vacation memories into an impressive keepsake, a personal one of a kind Photo Book. Fill every page with memories of your cruise vacation. Orders close at 10:00 pm on the last day of the cruise.

**PHOTOS ARE AVAILABLE FOR VIEWING ON OUR INTERACTIVE PHOTO KIOSKS APPROXIMATELY FIVE HOURS AFTER BEING TAKEN AND ARE ONLY AVAILABLE FOR PURCHASE DURING THIS CRUISE.**

**AN 18% AUTO GRATUITY IS ADDED TO ALL SENSES SPA SERVICES.**

**DUE TO PORT REGULATIONS, WHEN THE SHIP IS DOCKED, THE STORES WILL REMAIN CLOSED.**

## IMPORTANT INFORMATION

**Security Notice/ Unaccompanied Minor Ashore**  
All Guests (including children) who wish to disembark or embark the ship are required to present their Key to the World card at the gangway. A photo ID is also required for those Guests who are 18 years of age or older. Guests under the age of 18 are required to have a Parent, Guardian or other responsible adult complete the "Traveling with Minors" section of "My Online Check-In" prior to sailing or sign an authorization form at the Guest Services Desk if they wish to go ashore unaccompanied or with any adult from another stateroom.

**Insect Repellent Advisory**  
The Centers for Disease Control and Prevention recommends wearing long-sleeved shirts and pants along with insect repellent to protect against mosquito bites and related illnesses when going ashore. Complimentary insect repellent is available on the pier as you exit the ship. Insect repellent is also available for purchase in White Caps. When using both sunscreen and insect repellent, use sunscreen first and apply insect repellent on top of sunscreen.

**Corridor Quiet Hours**  
As a courtesy to all our Guests, please recognize quiet hallway hours from 10:00 pm til 8:00 am.

**No Reserved Seats Policy**  
As a courtesy to all our Guests, we kindly advise that the saving of seats is not permitted in the Walt Disney Theatre, and the saving of the sun loungers is not permitted on Deck 9 and 10. Items left unattended will be returned to lost and found at Guest Services, Deck 3 Midship.

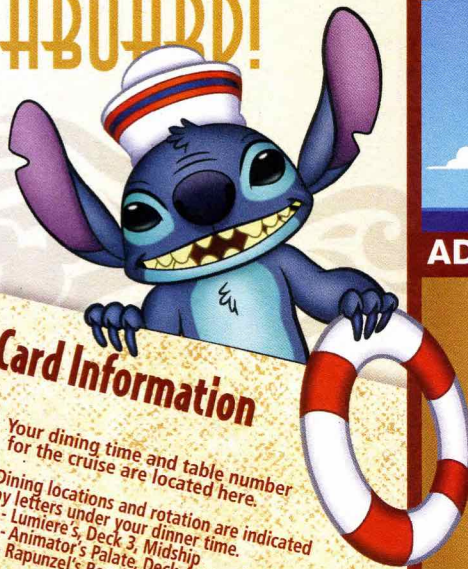
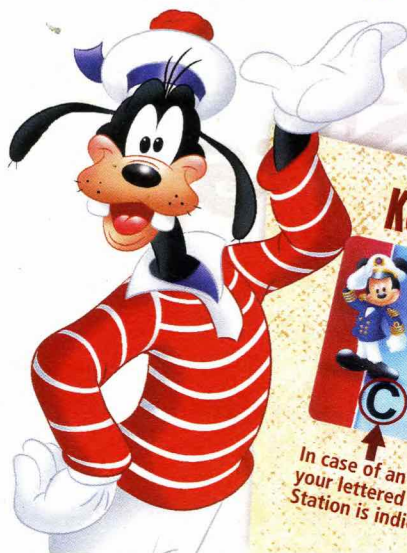
**Cold and Flu Reminder**  
Please wash hands frequently and thoroughly, particularly before meals. Contact the Health Center by dialing 7-1927, should anyone in your party become ill.

**Inclement Weather**  
For the safety of all Guests, outdoor events may be changed due to unforeseen weather conditions.

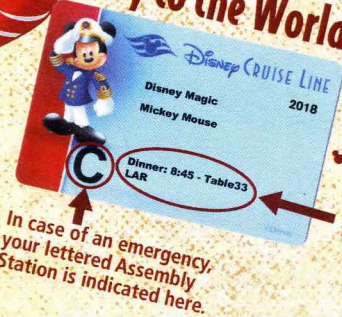
**Smoking**  
For the comfort of our Guests, the following areas are designated as smoking areas:  
\*Deck 9, Forward, Port Side by  
\*Deck 4, Starboard side from 6:00 pm to 6:00 am only (all of Deck 4 is non-smoking from 6:00 am to 6:00 pm)  
Smoking is prohibited inside all Guest staterooms and on stateroom verandahs. Guests found smoking in their staterooms or on their verandahs will be charged a \$250 stateroom recovery fee. Electronic cigarettes may only be used in designated smoking areas.

**Walt Disney Theatre**  
Theatrical performances may use artificial fog, strobe lights, pyrotechnics and other special effects. For the safety of our performers and the comfort of those around you, the use of any photography, video recording device or any electronic equipment is prohibited.  
**Verandah Safety**  
Please do not leave any personal items on your verandah that may be blown overboard or present a fire hazard if left unattended. Do not throw anything over the ship's side. Guests should not sit, lean or climb on the railing or leave children unattended on the verandah. Do not open the verandah and stateroom doors simultaneously as this may create a wind effect and could cause the doors to slam unexpectedly.

# WELCOME ABOARD!



## Key to the World Card Information



In case of an emergency, your lettered Assembly Station is indicated here.

Your dining time and table number for the cruise are located here.

Dining locations and rotation are indicated by letters under your dinner time.  
 L - Lumiere's, Deck 3, Midship  
 A - Animator's Palate, Deck 4, Aft  
 R - Rapunzel's Royal Table, Deck 3, Aft

## ADVENTURES AWAY

Earn your status as V.I.P. sailors! Join your Cruise Director, Darren, your Disney pals and your Cruise Staff as we officially begin your "Adventures Away."

**Deck Stage, Deck 9, Midship, 4:30 pm**

**DRINK OF THE DAY**  
 Planter's Punch (Alcoholic)  
 Mint Tea Punch (Non-Alcoholic)

Afternoon	1:45	2:00	2:15	2:30	2:45	3:00	3:15	3:30	3:45	4:00	4:15	4:30	4:45	5:00	5:15	5:30	5:45	6:00	6:15	6:30	6:45	
FUNNEL VISION		Poolside Jams with Cruise Staff DJ Deck 9 Stage																				Monsters, Inc. (G) -  Open Captioning Funnel Vision
BUENA VISTA THEATRE																						The Incredibles 2 (PG) Duration: 1 Hour 58 Minutes
CHARACTERS													Daisy DK4 Mid (S)	Chip & Dale Preludes	Minnie Lobby Atrium (P)							
FUN FOR ALL AGES		Walking Ship Tour Preludes			Walking Ship Tour Preludes								Deck 9 Stage	Mickey Lobby Atrium (P)	Donald DK4 Mid (S)		Pop Songs with O&A Duo Promenade Lounge	Walt Disney Theatre				
ADULTS		Spa Open House Senses Spa & Salon												Kids Me! Bath Pedi Party Senses Spa & Salon								Piano Tunes with Sean Flowers Keys
VIBE 14-17 YEARS OLD		Youth Activities Open House												Open House	Youth Activities Open House & Registration							Open for Teens
EDGE 11-14 YEARS OLD		Youth Activities Open House												Open House	Tween You & I Super Spin							Open House Open for Tweens
OCEANEER LAB 3-12 YEARS OLD		Youth Activities Open House & Registration				Youth Activities Tour								Youth Activities Open House		Game Challenge						Meet Your Counselors
OCEANEER CLUB 3-12 YEARS OLD		Youth Activities Open House & Registration				Youth Activities Tour								Open House	Open House	Dr Strange Defy the Dark Dimension	Open House					Craft Corner

### Mandatory Guest Assembly Drill 4:00 pm (All Guests must attend)

All ship services will be suspended during this time.

Refer to the posted drill instructions on the back of your stateroom door prior to heading to Deck 4. Please bring your Key to the World card.

You will not need your life jacket for the Guest Assembly Drill.



Your Assembly Station is indicated on your Key To The World card.



Evening	7:00	7:15	7:30	7:45	8:00	8:15	8:30	8:45	9:00	9:15	9:30	9:45	10:00	10:15	10:30	10:45	11:00	11:15	11:30	11:45	12:00		
FUNNEL VISION																						Up (PG) Funnel Vision	The Mighty Ducks (PG) Funnel Vision
BUENA VISTA THEATRE																							Solo: A Star Wars Story (PG-13) - 3D
CHARACTERS			Minnie Preludes	Daisy DK5 Mid (S)		Goofy DK4 Mid (S)						Minnie DK4 Mid (S)	Mickey DK4 Mid (S)										
FUN FOR ALL AGES			Lobby Atrium	D Lounge				Walt Disney Theatre				D Lounge	D Lounge										
ADULTS			Disney Vacation Club Member Celebration Fathoms						Music & Martinis with Sean Flowers Keys			Cruise Staff DJ Fathoms	Intuition Fathoms				Piano & Acoustic with O&A Duo Promenade Lounge					Cruise Staff DJ Fathoms	
VIBE 14-17 YEARS OLD		Cards Tournament				Profiles		Your Pick: Games Galore				Ice Breakers					Meet Your Counselors					Heroes and Villains	
EDGE 11-14 YEARS OLD		Wii Challenge		Craft Corner		4 Square Competition		Ice Breakers									Meet Your Counselors	Profiles				Heroes and Villains	
OCEANEER LAB 3-12 YEARS OLD		Explore the Lab!		Super Sloppy Science		GAGA Ball		Relay Games									Mad Hatter's Unbirthday Party		Wii Challenge				
OCEANEER CLUB 3-12 YEARS OLD		Meet Your Counselors		Memory Wall		Toy Story Boot Camp		Go Fetch									4 Square Competition		Dance Party				

FOLD along the dotted lines and take me with you so you don't miss any of the fun!

FOLD

**YOUTH ACTIVITIES OPEN HOUSE**  
 A non-secured program with activities for families, adults and children to enjoy together.



WALT DISNEY THEATRE

Deck 4, Forward  
6:15 pm & 8:30 pm

As a courtesy to all Guests, we kindly advise that the saving of seats is **not** permitted in the Walt Disney Theatre.

Assistance is available at the entrance to the Walt Disney Theatre 30 minutes prior to show time.

### Character Meet & Greet Ticket Distribution

*Port Adventures Desk, Deck 3, Midship - 12:00 pm - 2:00 pm*  
For Guests who did not reserve meet and greets online, a limited number of tickets are available today to meet some of your favorite Disney friends.

**Princess Gathering ~ Frodo Gathering**  
Tickets are required for each of these meet and greets.  
Space is limited.

### Character Appearances

**ADVENTURES AWAY**  
Deck 9 Stage - 4:30 pm

**PLUTO**  
DK4 Mid (S) - 7:45 pm

**DAISY DUCK**  
DK4 Mid (S) - 5:00 pm  
DK5 Mid (S) - 7:45 pm

**GOOFLY**  
DK4 Mid (S) - 8:15 pm  
Preludes - 9:45 pm

**MICKEY MOUSE**  
Lobby Atrium (P) - 5:15 pm  
Preludes - 8:00 pm  
DK4 Mid (S) - 10:00 pm

**DONALD DUCK**  
DK4 Mid (S) - 5:30 pm

**CHIP & DALE**  
Preludes - 5:30 pm

**MINNIE MOUSE**  
Lobby Atrium (P) - 5:45 pm  
Preludes - 7:30 pm  
DK4 Mid (S) - 9:30 pm



(S) Starboard Side - (P) Port Side

For detailed character appearances, refer to the character line on your Navigator, the Disney Cruise Line App, or the digital character board in the Lobby Atrium. Lines close 15 minutes after advertised start time.

### SHIP DIRECTORY

#### YOUTH ACTIVITIES

DISNEY'S OCEANEER CLUB	DECK 5, MID	12:00 PM - 3:30 PM 4:30 PM - 12:00 AM
DISNEY'S OCEANEER LAB	DECK 5, MID	12:00 PM - 3:30 PM 4:30 PM - 12:00 AM
EDGE	DECK 9, MID	12:00 PM - 3:30 PM 4:30 PM - 12:00 AM
IT'S A SMALL WORLD NURSERY	DECK 5, AFT	12:00 PM - 3:30 PM 4:30 PM - 11:30 PM
VIBE	DECK 10, MID	12:00 PM - 3:30 PM 4:30 PM - 12:00 AM

#### POOLS

\*Children under 12 years of age must have adult supervision in all pools.

AQUADUNK	DECK 10, MID	12:00 PM - 3:00 PM 6:00 PM - 8:00 PM
AQUALAB	DECK 9, AFT	12:00 PM - 3:30 PM 4:30 PM - 8:00 PM
GOOFLY'S POOL	DECK 9, MID	12:00 PM - 3:30 PM 6:00 PM - 10:00 PM
NEPHEWS' SPLASH ZONE	DECK 9, AFT	12:00 PM - 3:30 PM 4:30 PM - 6:00 PM
QUIET COVE POOL (18+)	DECK 9, FWD	12:00 PM - 11:00 PM
TWIST 'N' SPOUT	DECK 9, AFT	12:00 PM - 3:00 PM 4:30 PM - 8:00 PM

Please note, "selfie sticks" are not permitted in any aquatic areas.

Complimentary pool vests are available for children to use in the pools onboard. They are located on the pool deck.

#### RECREATION

PORT ADVENTURES DESK	DECK 3, MID	12:00 PM - 3:30 PM 4:30 PM - 6:00 PM 7:00 PM - 8:30 PM
SENSES FITNESS CENTER (18+)	DECK 9, FWD	11:30 AM - 10:00 PM
WIDE WORLD OF SPORTS DECK	DECK 10, FWD	24 HOURS

#### GENERAL INFORMATION

BUENA VISTA THEATRE	DECK 5, AFT	SHOWTIMES
CONNECT@SEA DESK	DECK 3, AFT	1:00 PM - 4:00 PM 7:00 PM - 10:00 PM
DISNEY VACATION CLUB DESK	DECK 4, MID	5:00 PM - 7:00 PM
DISNEY VACATION PLANNING	DECK 4, MID	7:30 PM - 8:30 PM
FUNNEL VISION	DECK 9, MID	SHOWTIMES
GUEST SERVICES	DECK 3, MID	24 HOURS
HAIR BRAIDING	DECK 9, MID	
MEDICAL HEALTH CENTER	DECK 1, FWD	4:30 PM - 7:00 PM
PORT SHOPPING DESK	DECK 3, MID	7:30 PM - 9:30 PM
PRELUDES	DECK 4, FWD	SHOWTIMES
SENSES SPA AND SALON	DECK 9, FWD	11:30 AM - 10:00 PM
SHUTTERS PHOTO GALLERY	DECK 4, AFT	5:30 PM - 10:30 PM
WALT DISNEY THEATRE	DECK 4, FWD	SHOWTIMES

#### SHOPPING

BIBBIDI BOBBIDI BOUTIQUE	DECK 10, FWD	12:00 PM - 3:00 PM 5:00 PM - 9:00 PM
MICKEY'S MAINSAIL	DECK 4, FWD	6:00 PM - 11:00 PM
SEA TREASURES	DECK 3, FWD	6:00 PM - 11:00 PM
THE CROWN JEWELRY	DECK 4, AFT	6:00 PM - 11:00 PM
WHITE CAPS	DECK 4, FWD	6:00 PM - 11:00 PM

DUE TO PORT REGULATIONS, WHEN THE SHIP IS DOCKED, THE STORES MUST REMAIN CLOSED.

EVENING ATTIRE Cruise Casual

WEATHER Today: Sunny  
FORECAST High: 72°F/22°C

### DINING & LOUNGES

#### LUNCH

CABANAS	DECK 9, AFT	12:00 PM - 3:15 PM
DAISY'S DE-LITES	DECK 9, AFT	12:00 PM - 3:30 PM 4:15 PM - 6:00 PM
DUCK-IN DINER	DECK 9, AFT	12:00 PM - 3:30 PM 4:15 PM - 6:00 PM
LUMIÈRE'S	DECK 3, MID	12:00 PM - 1:30 PM
PINOCCHIO'S PIZZERIA	DECK 9, MID	12:00 PM - 3:30 PM 4:15 PM - 6:00 PM

#### DINNER

ANIMATOR'S PALATE	DECK 4, AFT	5:45 PM & 8:15 PM
DUCK-IN DINER	DECK 9, AFT	6:00 PM - 10:00 PM
LUMIÈRE'S	DECK 3, MID	5:45 PM & 8:15 PM
PALO (18+) (FOR RESERVATIONS CALL 7-8843)	DECK 10, AFT	6:00 PM - 8:30 PM
RAPUNZEL'S ROYAL TABLE	DECK 3, AFT	5:45 PM & 8:15 PM

#### LATE NIGHT SNACKS

O'GILLS PUB	DECK 3, FWD	10:45 PM - 11:45 PM
PINOCCHIO'S PIZZERIA	DECK 9, MID	9:30 PM - 12:00 AM
PROMENADE LOUNGE	DECK 3, AFT	10:45 PM - 11:45 PM

#### ADDED FEATURES

EYE SCREAM	DECK 9, AFT	12:00 PM - 3:30 PM 4:15 PM - 11:00 PM
BEVERAGE STATION	DECK 9, AFT	24 HOURS
ROOM SERVICE	DIAL 7-4330	OPENS AT 1:30 PM

#### ENTERTAINMENT - LOUNGES - BARS

Adults must be 21 and older to consume alcoholic beverages.

AFTER HOURS	DECK 3, FWD	(AFTER 9:00 PM. ADULTS ONLY)
COVE CAFE (18+)	DECK 9, MID	11:45 AM - 12:00 AM
D LOUNGE	DECK 4, MID	SHOWTIMES
FATHOMS (18+ AFTER 9:00 PM)	DECK 3, FWD	7:30 PM - 8:30 PM 9:30 PM - 2:00 AM
FROZONE TREATS	DECK 9, AFT	11:45 AM - 6:00 PM
KEYS (18+)	DECK 3, FWD	6:00 PM - 12:30 AM
O'GILLS PUB (18+ AFTER 9:00 PM)	DECK 3, FWD	11:45 AM - 12:00 AM
PRELUDES	DECK 4, FWD	SHOWTIMES
PROMENADE LOUNGE	DECK 3, AFT	11:45 AM - 12:00 AM
PINOCCHIO'S PIZZERIA	DECK 9, MID	11:45 AM - 12:00 AM
SIGNALS (18+)	DECK 9, FWD	11:45 AM - 10:00 PM

Public Health Advisory: Consuming raw or undercooked meats, poultry, seafood, shellfish, or eggs may increase your risk for foodborne illness, especially if you have certain medical condition.



Explore and more with our carefully selected Port Adventures. Pass by the Port Adventures Desk, Deck 3, Midship to find out more.

### IMPORTANT NUMBERS

Fire/Security: 7-3001  
Medical EMERGENCY: 7-3000  
Health Center: 7-1927