

# PERSONAL NAVIGATOR



TUESDAY, JANUARY 24, 2017

GRAND CAYMAN, CAYMAN ISLANDS

Sunrise 7:01 am Sunset: 6:13 pm

Evening Attire: Cruise Casual

All Ashore: Refer to Tender Letter

Last Tender: 5:30 pm

Today: Partly Sunny High: 78°F/26°C

Tomorrow: Sunny High: 84°F/28°C



On the eve of their graduation, three best friends go on a magical journey down the wishing well. A host of Disney characters help them discover the connection between children who are becoming adults, and adults who stay in touch with being a kid at heart.

## WALT DISNEY THEATRE

Deck 3 & 4, Forward

6:15 pm & 8:30 pm

As a courtesy to all Guests, we kindly advise that the saving of seats is **not** permitted in the Walt Disney Theatre.



Assistance available at the entrance to the Walt Disney Theatre 30 minutes prior to show time.

## Grand Cayman Port Information

The Cayman Islands were first sighted by European explorers in 1503, in a wayward voyage headed by Christopher Columbus. Though the two smaller islands were discovered on this fateful trip, the largest of them, Grand Cayman, would escape attention by sailors until 1655, when the area was claimed by the British. For centuries from the time of their discovery, the Cayman Islands would provide a place for ships to come ashore and rest on their journeys into the Caribbean. Crewmen on these ships would routinely replenish themselves on the meat provided by the native population of turtles.

By the 19th century, Grand Cayman was overtaken by pirates. It would take political upheaval and the establishment of a local government under British rule to transform the island into what it is today.

Discover a place that—once a welcome refuge for buccaneers—is today a treasured tourist hotspot. From sparkling surf to the bounty of local shops, whatever your pleasure, you'll find it here.

### DOCKING - Please refer to Tender Letter

The ship anchors outside of the port and Guests take a tender to the dock. Tenders are small boats that provide transportation between the ship and the shore. Guests with special needs/disabilities wishing to leave the ship should check with Guest Services for accessible gangways.



### ADULT QUIZ

Have you been told you are full of useless information about pop culture? If the answer is "Yes", then you have what it takes to play the high energy game show all about the world of Pop!

The Tube (18+),  
Deck 4, Aft,  
10:15 pm

## Don't Miss:

### Good Morning Disney Fantasy

Channel 5 - Repeated from 5:00 am - 12:00 pm

Tune in to channel 5 as your Cruise Director highlights the upcoming events and activities for the day.

### Wake up with Disney Junior

D Lounge, Deck 4, Midship - 8:30 am

What happens when you experience unlimited fun with your favorite Disney Junior shows? You get an exciting dance party designed especially for preschoolers ages seven and under.

### Jake & The Neverland Pirates

D Lounge, Deck 4, Midship - 5:15 pm

A'Hoy there mates, join us for an adventure in D Lounge with Jake and the Neverland Pirates.

### Pin Trading

Lobby Atrium, Deck 3, Midship - 7:30 pm

Make your way to the Lobby Atrium at 7:30 pm and join the Officers of the Disney Fantasy Cruise Ship for pin trading. Deck 3, Midship.

### Frank Sinatra Tribute with Fine Whines (18+)

La Piazza, Deck 4, Aft - 10:30 pm

Join Fine Whines as they play live for your listening pleasure.

Disney Cruise Line



Please check your tour tickets for meeting times and locations. Visit the Port Adventures desk, Deck 5, Midship for any questions.

## DINNER MENU

Animator's Palate : Prince & Princess  
Enchanted Garden : Prince & Princess  
Royal Court : Prince & Princess

## DRINK OF THE DAY

Yellow Bird (Alcoholic)  
Lava Smoothie (Non-Alcoholic)

### IMPORTANT NUMBERS

Fire/Security: 7-3001  
Medical Emergency: 7-3000  
Health Center: 7-1923



# ADULT ACTIVITY HIGHLIGHTS

## SENSES SPA FITNESS CLASSES & SEMINARS

*Sunrise Stretch* - Donald's Pool - 7:00 am  
*Body Sculpt Boot Camp* (Nom. Fee) - Senses Fitness Center - 8:30 am  
*Complimentary Walk-In Facial Rejuvenation Consultations* - Senses Spa & Salon - 9:00 am  
*CoolSculpting - One Treatment for a Slimmer You* - Senses Spa & Salon - 9:15 am  
*Pure Form Pilates* - Senses Fitness Center - 4:00 pm  
*Complimentary Footprint Analysis* - Senses Spa & Salon - 5:00 pm



## 1820 SOCIETY: ICE CREAM SOCIAL

*Frozone Treats, Deck 11, Midship - 5:15 pm*  
 Join your fellow Society members for some ice cream and conversation.

## 1820 SOCIETY: GAME CHALLENGE

*O'Gills Pub, Deck 4, Aft - 9:45 pm*  
 Join us and play some of your favorite board games.



## ART OF THE THEME SHOW TOUR

*Meridian, Deck 12, Aft - 9:00 am*  
 Join us for a guided tour highlighting the design, Imagineering and artistry of the ship. This tour is reserved for Guests 18 and over.

## PUB QUIZ

*O'Gills Pub, Deck 4, Aft - 4:30 pm*  
 Join us as we test your knowledge against your fellow Guests at our Pub Quiz challenge.

## ULTIMATE DISNEY TRIVIA

*O'Gills Pub, Deck 4, Aft - 7:30 pm*  
 Think you know all there is to know about Disney? Come test your knowledge at ultimate Disney trivia for the Adults.

## LIVE GUITAR WITH SELKIE

*O'Gills Pub, Deck 4, Aft - 9:30 pm & 10:30 pm*  
 Join Selkie as she plays live for your listening pleasure.



# FUN FOR ALL AGES HIGHLIGHTS



## WAKE UP WITH DISNEY JUNIOR

*D Lounge, Deck 4, Midship - 8:30 am*  
 What happens when you experience unlimited fun with your favorite Disney Junior shows? You get an exciting dance party designed especially for preschoolers ages seven and under.



## DISNEY ANIMATION: CARTOON PHYSICS

*D Lounge, Deck 4, Midship - 9:00 am*  
 Go behind the scenes at Walt Disney Animation Studios and see how flat drawings and pencil lines can come to life through basic techniques such as "Stretch and Squash", and create your own "bouncing ball" animation exercise in this entertaining and fun enrichment program.



## CHIP-IT GOLF (12+)

*Lobby Atrium, Deck 3, Midship - 3:45 pm*  
 It's par for the course for our Guests 12 and older to compete on our special "greens" in this fun tournament.



## JAKE & THE NEVERLAND PIRATES

*D Lounge, Deck 4, Midship - 5:15 pm*  
 AHoy there mates, join us for an adventure in D Lounge with Jake and the Neverland Pirates.



## \$7,000 MEGA JACKPOT BINGO

*Bingo Pre-Sales start at 7:15 pm*  
*D Lounge, Deck 4, Midship - 7:30 pm*  
 Don't miss your chance to take home big money! 4 CASH prize games and great raffle prizes to be won! Complete the fourth game in 46 numbers or less and win the \$7,000 Mega Jackpot! Pre-Sales start 15 minutes prior to game.

## MAJORITY RULES

*The Tube, Deck 4, Aft - 7:30 pm*  
 Join your Club Host to find out who really rules!



## FAMILY SUPERSTAR KARAOKE

*D Lounge, Deck 4, Midship - 11:00 pm*  
 Join your Cruise Staff and sing along to your favorite song - fun for everyone.



## SO YOU THINK YOU KNOW YOUR FAMILY?

*D Lounge, Deck 4, Midship - 10:15 pm*  
 This fun-filled family game show is always full of surprises. Find out how well you know, or don't know your family!

## SAFETY ASHORE INFORMATION

While you will find many great experiences ashore, please remain vigilant about your personal safety and the safety of your belongings. As in any large urban tourist destination, you'll want to take some basic precautions to make the most of your time ashore.

- Be aware of your surroundings at all times. Avoid short cuts, narrow alleys and poorly lit streets.
- Avoid wandering from the main shopping and tourist areas into unfamiliar territory. If venturing out independently, have a plan, use only licensed taxi operators.
- Identity/Credit Card theft can occur anywhere. Please remain vigilant in monitoring the safe keeping of your personal information.
- Leave valuables in your room safe and avoid carrying large amounts of cash. Exercise caution when using ATMs. Cameras and handbags should be carried close to your body or concealed out of sight.
- Leave air transportation tickets and other travel documents in your room safe. When going ashore, each adult is required to carry a Driver's license, passport or other government-issued photo ID. - Note: Some ports may require guests to carry passports ashore.
- Most crimes are easier to commit in dark unlit areas. When going ashore at night, please be extra vigilant about your personal safety.



# YOUTH ACTIVITY HIGHLIGHTS

## DINE & PLAY

A convenience for families dining at 8:15 pm, our Youth Activities counselors will be available at 9:15 pm at the entrance of Royal Court, Enchanted Garden and Animator's Palate dining rooms to bring registered children to join the fun in the Youth Activity areas.



**Deck 5, Midship (7-1440)**  
(3-12 years old)

9:00 am - 12:00 am

### ALOHA LUAU

7:30 pm

It's party time, Hawaiian style! Come join us for a Luau experience and learn how to dance like Lilo & Stitch.

### PLUTO'S PAJAMA PARTY

10:00 pm

Bring the little ones in their pajamas but there will be anything but sleep when Pluto and friends host the ultimate slumber party!



**Deck 5, Midship (7-1445)**  
(3-12 years old)

9:00 am - 12:00 am

### DETECTIVE SCHOOL

4:30 pm

It's a crime how much fun you'll have as you go CSI Goofy style.

### MAGIC SHOW

7:30 pm

The Magnificent Magician will demonstrate to you some of the best known magic tricks on the sea.



**Deck 13, Midship (7-9743)**  
(11-14 years old)

9:00 am - 1:00 am

### DISNEY ANIMATION: CREATING A CHARACTER

7:30 pm

Go behind the scenes at Walt Disney Animation Studios as Walt Disney himself talks about his most famous characters, then learn the basic techniques of drawing Mickey and Donald in this fun and interesting enrichment program.

### ANYONE CAN COOK: PIZZA

10:15 pm

Anyone can cook as we work together to create some of our favorite treats. From our galley to yours; join our chef as they show you how to create pizza!



**Entrance on Deck 4, Forward (7-9418)**  
(14-17 years old)

10:00 am - 2:00 am

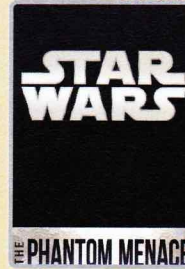
### GENDER WARS

10:00 pm

Join us as we find out who really are the kings or queens of the castle.

# BUENA VISTA THEATRE

Deck 4 & 5, Midship  
Today's Movies



12:30 pm  
Duration:  
2 hrs 16 mins  
Rating: PG

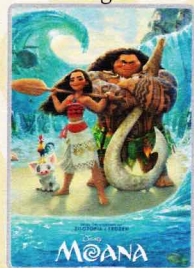


5:30 pm & 8:00 pm  
Duration:  
1 hr 55 mins  
Rating: PG-13



Open Captioning

3:15 pm  
Duration:  
1 hr 53 mins  
Rating: PG



3D

10:30 pm  
Duration:  
1 hr 53 mins  
Rating: PG



### FAMILY DANCE PARTY

Come see what Donald and his friends are up to this time. Bring the family out to this interactive dance party featuring fun Latin music! Your family will learn to Salsa, Merengue and just have a Latin good time!

**D Lounge,**  
**Deck 4, Midship,**  
**9:45 pm**



### ADULT VARIETY ACT

Featuring the Comedy and Ventriloquism of Michael Harrison, as he entertains you in this adult exclusive show.

**The Tube (18+),**  
**Deck 4, Aft,**  
**9:45 pm & 10:45 pm**

### YOUTH ACTIVITIES OPEN HOUSE

Open House is an opportunity for all to come and participate in a variety of exciting activities and free time in the Oceaneer Club, Oceaneer Lab, it's a small world nursery, Vibe and Edge throughout the cruise. During these times secured programming will still be offered in the other venue for those looking to check their children into care.

**Disney's Oceaneer Club:** 9:00 am - 1:00 pm  
**Disney's Oceaneer Lab:** 1:00 pm - 2:45 pm & 11:00 pm - 12:00 am  
**Edge:** 9:00 am - 10:00 am & 6:00 pm - 7:30 pm  
**Vibe:** 10:00 am - 11:00 am & 7:30 pm - 9:00 pm



# MORE TO ENJOY WHILE ONBOARD

## BAHAMIAN VOYAGES

The Bahamas are renowned for breathtaking beaches, incredible recreation and exceptional shopping experiences. Pair your tropical escape with the world-class comfort and service of a Disney cruise and make your getaway complete. Visit the Disney Vacation Planning desk, Deck 4, Midship for more information. Disney Vacation Planning tends to get busy on the last day of sailing. Don't miss the opportunity to plan your next Disney vacation.

## DISNEY VACATION CLUB® GROUP PREVIEW

Want to learn more about taking magical vacations year after year? Please see a Disney Vacation Club representative on Deck 4, Midship, or call 7-2805 from your stateroom phone for more information about our interactive group presentation.

## PORT SHOPPING INFORMATION

Grand Cayman is a tax & duty free shopping paradise! Everything is within walking distance from the tender drop off. Meet your Port Shopping Guide, Maureen, in Diamonds International Store #1a between 12:00 pm - 2:00 pm. Remember your Port Shopping Map! Tune into channel 9 for more Grand Cayman information.

## Connect @ Sea

We are now offering a NEW and improved Internet service to stay connected on your cruise like no other in the industry! Internet packages range from \$0.25 per MB - \$89.00 (1000 MB package). For more information contact your Connect@Sea Expert or Guest Services onboard.

## ONBOARD AIRLINE CHECK IN

Stop by the Guest Services Desk, Deck 3, Midship to find out about enrolling in our Onboard Airline Check In Service.

## ARR-CADE

Where can you be a ninja, play the guitar like a rock star, race a car down the streets of Tokyo and along the way WIN some great prizes? Arr-CADE located Deck 11, Aft where the pirates play.

## FREE ON DEMAND TV

Watch Disney movies, Hollywood features, ABC shows, and even captioned content, plus much more "On Demand" for FREE in the comfort of your stateroom! Bookmark your movie and come back to watch it later. Press MENU on your stateroom television remote control and follow the prompts.

## Disney Cruise Line PORT ADVENTURES

Welcome to the beautiful Cayman Islands.

Take this opportunity to discover Grand Cayman's world renowned snorkeling. Dive down deep and explore the ocean floor on the Atlantis submarine.

Visit the **Port Adventures Desk, Deck 5, Midship**, for more information.

## SHOPPING

### CUSTOM STAR WARS DAY AT SEA NAMETAGS

Choose your side with a custom galactic Nametag! Limited to eleven (11) characters. Place your order at Mickey's Mainsail, Deck 3, Forward.

### OFFICER PIN TRADING

Make your way to the Lobby Atrium at 7:30 pm and join the Officers of the Disney Fantasy Cruise Ship for pin trading. Deck 3, Midship.

### STAR WARS DAY AT SEA MERCHANDISE

Visit Sea Treasures, Deck 3, Forward, for the stellar array of commemorative Star Wars Day at Sea merchandise, including apparel for the entire family!

### SOPHIA FIORI DISNEY INSPIRED JEWELRY

Discover the elegant Disney inspired diamond jewelry collection by Sophia Fiori, one of the world's leading designers of diamond jewelry when you visit White Caps, Deck 3, Forward.

### HELPFUL SHOPPING TIP

Don't have time to drop off your souvenirs at your stateroom before dinner or a show? For your convenience, Disney Cruise Line's merchandise locations can hold your purchased items for up to 24 hours while you enjoy the other Disney Cruise Line experiences you don't want to miss out on. White Caps, Sea Treasures, and Mickey's Mainsail, Deck 3, Forward.

### JOE KAMINSKI ART AND MORE!

Be sure to visit Vista Gallery to admire beautiful artwork featuring some of your favorite Disney characters as interpreted by celebrated artists such as Joe Kaminski. Don't forget to as a merchandise host/hostess for details on how you can purchase your favorite pieces! Deck 4, Midship.

Due to port regulations, when the ship is docked, the stores will remain closed.



**COMPLIMENTARY  
FACIAL  
REJUVENATION  
CONSULTATIONS**

The Rejuvenation Spa at Senses Spa & Salon offers the latest in skin rejuvenation treatments - Dysport, Restylane and Thermage. In just minutes, we can help you look more rested, refreshed and youthful. Book your consultation today for a complimentary facial skin analysis.

**Senses Spa & Salon, Deck 11, Forward, Extension 7-1465**

## SOPHIA FIORI DIAMONDS

Sophia Fiori, Hollywood's first choice in diamonds has boarded the Disney Fantasy Cruise Ship to premiere their new collection of white & colored diamonds worn at the Oscars, Golden Globes, Emmy and Grammy Awards.

**WHITE CAPS  
DECK 3, FORWARD**



## PHOTO BOOK

Visit Shutters today and turn your magical vacation memories into an impressive keepsake with a personalized, one-of-a-kind PhotoBook. Fill every page with wonderful memories of your family during this cruise. Orders close at 10:30 pm on the last day of the cruise. Supplies are limited. Please use the PHOTOFINDER tab on the kiosk or ask for assistance from a friendly photographer to help locate missing images.

*\*Please note that photos are available for viewing on our interactive photo kiosks approximately five hours after being taken and are only available for purchase during this cruise. Photo sizes are preset and cannot be changed.*

## IMPORTANT INFORMATION

### Security Notice

All Guests (including children) who wish to disembark the ship are required to present their Key to the World card at the gangway. A photo ID is also required for those Guests who are 18 years of age or older. Guests under the age of 18 are required to have a parent, guardian or other responsible adult sign an authorization form at the Guest Service Desk if they wish to go ashore unaccompanied or with any adult from another stateroom.

### Inclement Weather

For the safety of all Guests, outdoor events may be changed due to unforeseen weather conditions.

### Insect Repellent Advisory

The Centers for Disease Control and Prevention recommends wearing long-sleeved shirts and pants along with insect repellent to protect against mosquito bites and related illnesses when going ashore. Complimentary insect repellent is available on the pier as you exit the ship. Insect repellent is also available for purchase in White Caps. When using both sunscreen and insect repellent, use sunscreen first and apply insect repellent on top of sunscreen.

### Corridor Quiet Hours

As a courtesy to all our Guests, please recognize quiet hallway hours from 10:00 pm til 8:00 am.

### Environmental Message

With Disney's commitment to the environment, please refrain from throwing anything over the ship's side. Thank you!

### No Reserved Seats Policy

As a courtesy to all our Guests, we kindly advise that the saving of seats is not permitted in the Walt Disney Theatre, and the saving of the sun loungers is not permitted on Deck 11, 12, and 13. Items left unattended will be returned to lost and found at Guest Services, Deck 3 Midship.

### Cold and Flu Reminder

Please wash hands frequently and thoroughly, particularly before meals. Contact the Health Center by dialing 7-1923, should anyone in your party become ill.

### Smoking

For the comfort of our Guests, the following areas are designated as smoking areas:  
\*Deck 15, forward, port side by Currents  
\*Deck 12, aft, port side outdoor area that is accessible through the Meridian Lounge  
\*Deck 4, aft, port side from 6:00 pm to 6:00 am only (all of Deck 4 is non-smoking from 6:00 am to 6:00 pm)  
Smoking is prohibited inside all Guest staterooms and on stateroom verandahs. Guests found smoking in their staterooms or on their verandahs will be charged a \$250 stateroom recovery fee. Electronic cigarettes may only be used in designated smoking areas.

### Walt Disney Theatre

Theatrical performances may use artificial fog, strobe lights, pyrotechnics and other special effects. For the safety of our performers and the comfort of those around you, the use of any photography, video recording device or any electronic equipment is prohibited.

### Verandah Safety

Please do not leave any combustible materials on your balcony when not present in your stateroom for safety reasons.



Morning	8:30	8:45	9:00	9:15	9:30	9:45	10:00	10:15	10:30	10:45	11:00	11:15	11:30	11:45	12:00	12:15	12:30	12:45	1:00	1:15	1:30				
FUNNEL VISION	Hercules (G)  Open Captioning Funnel Vision										Tangled (PG)  Open Captioning Funnel Vision														
BUENA VISTA THEATRE	Star Wars: Episode I. The Phantom Menace (PG) Duration: 2 Hours 16 Minutes																								
CHARACTERS	Jessie Lobby Atrium (V)	Cpt. Hook Preludes	Woody Lobby Atrium (V)	Peter Pan Preludes	Jessie Lobby Atrium (V)	Cpt. Hook Preludes	Woody Lobby Atrium (V)	Peter Pan Preludes																	
	Minnie Dk 4, Balcony		Queen of Hearts Dk 4, Balcony		Minnie Dk 4, Balcony		Queen of Hearts Dk 4, Balcony																		
FUN FOR ALL AGES	D Lounge	D Lounge					Create a Postcard Oceaneer Club					Craft Corner Oceaneer Club													
	Crafts: 3D Crafts O'Gills Pub																								
ADULTS	Boot Camp (Nom. Fee) Senses Fitness Center					Art of The Theme Show Tour Meridian																			
	Friends of Bill W. Outlook					CoolSculpting - A Slimmer You Senses Spa & Salon																			
VIBE 14-17 YEARS OLD							Youth Activities Open House				Animation Cells				Disney Scene It				Bingo						
EDGE 11-14 YEARS OLD					Youth Activities Open House								Around the World in 7 days				Four Square				Villains				
OCEANEER LAB 3-12 YEARS OLD							Disney Cruise Line Trivia				Stitch's Adventure Squad				Magic PlayFloor						Youth Activities Open House				
															Lunch										
OCEANEER CLUB 3-12 YEARS OLD	Youth Activities Open House																		Magic PlayFloor						
							Heffalump Expodishun								Create a Postcard				Craft Corner						
Afternoon	1:45	2:00	2:15	2:30	2:45	3:00	3:15	3:30	3:45	4:00	4:15	4:30	4:45	5:00	5:15	5:30	5:45	6:00	6:15	6:30	6:45				
FUNNEL VISION	Lilo & Stitch (PG)  Open Captioning Funnel Vision							The Little Mermaid (G)  Open Captioning Funnel Vision							Mulan (G)  Open Captioning Funnel Vision										
BUENA VISTA THEATRE	Star Wars: Episode I. The Phantom Menace (PG) Duration: 2 Hours 16 Minutes							Moana (PG)  Open Captioning Duration: 1 Hour 53 Minutes							Dr. Strange (PG-13) Duration: 1 Hour 55 Minutes										
CHARACTERS						Mickey Preludes		Pluto Preludes				Daisy Preludes				Pluto Preludes									
						Jake Dk 4, Balcony		Doc McStuffins Dk 4, Balcony		Jake Dk 4, Balcony				Doc McStuffins Dk 4, Balcony		Sofia Dk 4, Balcony									
FUN FOR ALL AGES						Cruisin' for Trivia La Piazza		Family Crafts La Piazza				Bingo Pre-Sales		Mega Raffle Jackpot D Lounge				D Lounge		Walt Disney Theatre					
										Lobby Atrium (12+)								Live Music with Soul Duo Lobby Atrium		Family Crafts D Lounge					
ADULTS								Informal Card Play O'Gills Pub						Pub Quiz O'Gills Pub				1820 Society: Ice Cream Social Frozone Treats							
												Pure Form Pilates Senses Fitness Center													
VIBE 14-17 YEARS OLD	GAGA Ball				Scattergories			Crowning of the Couch Potato			Super Sloppy Science			Scavenger Hunt						Foosball Tournament		Teen Choice			
EDGE 11-14 YEARS OLD	Video Game Challenge				Sports Deck Fun				Crowning of the Couch Potato				Brains and Brawns							Youth Activities Open House					
OCEANEER LAB 3-12 YEARS OLD						Monsters, Inc.: Open "Mike" Night			GAGA Ball			Detective School									Super Sloppy Science				
	Super Sloppy Science																								
OCEANEER CLUB 3-12 YEARS OLD	Bingo		Big Top Fun Fest!								Mickey's Puzzle Playtime			Cruisin' with Crush						Dinner		Parachute Games			



Morning	8:30	8:45	9:00	9:15	9:30	9:45	10:00	10:15	10:30	10:45	11:00	11:15	11:30	11:45	12:00	12:15	12:30	12:45	1:00	1:15	1:30														
FUNNEL VISION	Hercules (G)  Open Captioning Funnel Vision										Tangled (PG)  Open Captioning Funnel Vision																								
BUENA VISTA THEATRE											Star Wars: Episode I. The Phantom Menace (PG) Duration: 2 Hours 16 Minutes																								
CHARACTERS	Jessie Lobby Atrium (V)	Cpt. Hook Preludes	Woody Lobby Atrium (V)	Peter Pan Preludes	Jessie Lobby Atrium (V)	Cpt. Hook Preludes	Woody Lobby Atrium (V)	Peter Pan Preludes	Character Dance Party Lobby Atrium																										
FUN FOR ALL AGES	D Lounge	D Lounge				Walt Disney Theatre (PG) Duration: 2 Hours 1 Minute		Family Crafts La Piazza		Disney Trivia La Piazza		D Lounge		The Tube (Limited Availability)		La Piazza		La Piazza																	
ADULTS	Boot Camp (Nom. Fee) Senses Fitness Center		Art of The Theme Show Tour Meridian		Friends of Bill W. Outlook		CoolSculpting - A Slimmer You Senses Spa & Salon		Pub Trivia O'Gills Pub		Adult Animation O'Gills Pub		Crafts: Tile Coasters O'Gills Pub		Pictionary Challenge O'Gills Pub																				
VIBE 14-17 YEARS OLD	Youth Activities Open House										Animation Cells					Disney Scene It		Bingo																	
EDGE 11-14 YEARS OLD	Youth Activities Open House										Around the World in 7 days Four Square										Villains														
OCEANEER LAB 3-12 YEARS OLD	Disney Cruise Line Trivia										Stitch's Adventure Squad				Magic PlayFloor				Lunch																
OCEANEER CLUB 3-12 YEARS OLD	Youth Activities Open House																								Magic PlayFloor										
	Heffalump Expodishun												Create a Postcard				Craft Corner																		
Afternoon	1:45	2:00	2:15	2:30	2:45	3:00	3:15	3:30	3:45	4:00	4:15	4:30	4:45	5:00	5:15	5:30	5:45	6:00	6:15	6:30	6:45														
FUNNEL VISION	Lilo & Stitch (PG)  Open Captioning Funnel Vision										The Little Mermaid (G)  Open Captioning Funnel Vision					Mulan (G)  Open Captioning Funnel Vision																			
BUENA VISTA THEATRE	Star Wars: Episode I. The Phantom Menace (PG) Duration: 2 Hours 16 Minutes										Moana (PG)  Open Captioning Duration: 1 Hour 53 Minutes					Dr. Strange (PG-13) Duration: 1 Hour 55 Minutes																			
CHARACTERS						Jake Dk 4, Balcony		Doc McStuffins Dk 4, Balcony		Jake Dk 4, Balcony		Doc McStuffins Dk 4, Balcony		Sofia Dk 4, Balcony																					
FUN FOR ALL AGES	Walt Disney Theatre (PG) Duration: 2 Hours 1 Minute		D Lounge		Basketball Free Throw Goofy's Sports Deck		Bingo Pre-Sales		Mega Raffle Jackpot D Lounge		D Lounge		Walt Disney Theatre																						
	D Lounge - Apple Strudel		Cruisin' for Trivia La Piazza		Towel Folding The Tube		Family Crafts La Piazza		Chip It Lobby Atrium (12+)				Live Music with Soul Duo Lobby Atrium		Family Crafts D Lounge																				
ADULTS	Brainteasers O'Gills Pub		1820 Society: Mini Golf Goofy Golf		Informal Card Play O'Gills Pub				Pure Form Pilates Senses Fitness Center		Pub Quiz O'Gills Pub		1820 Society: Ice Cream Social Frozone Treats																						
VIBE 14-17 YEARS OLD	GAGA Ball		Scattergories		Crowning of the Couch Potato		Super Sloppy Science		Scavenger Hunt				Foosball Tournament		Teen Choice																				
EDGE 11-14 YEARS OLD	Video Game Challenge		Sports Deck Fun		Crowning of the Couch Potato		Brains and Brawns								Youth Activities Open House																				
OCEANEER LAB 3-12 YEARS OLD			Monsters, Inc.: Open "Mike" Night		GAGA Ball		Detective School										Super Sloppy Science																		
OCEANEER CLUB 3-12 YEARS OLD	Bingo		Big Top Fun Fest!				Mickey's Puzzle Playtime		Cruisin' with Crush				Dinner				Parachute Games																		
Evening	7:00	7:15	7:30	7:45	8:00	8:15	8:30	8:45	9:00	9:15	9:30	9:45	10:00	10:15	10:30	10:45	11:00	11:15	11:30	11:45	12:00														
FUNNEL VISION	A Bug's Life (G)  Open Captioning Funnel Vision										Pirates of the Caribbean: Dead Man's Chest (PG-13)  Open Captioning Funnel Vision																								
BUENA VISTA THEATRE	Dr. Strange (PG-13) Duration: 1 Hour 55 Minutes										Moana (PG) - 3D																								
CHARACTERS	Cinderella Preludes		Mickey Lobby Atrium (V)		Pinocchio Dk 4, Balcony		Minnie Lobby Atrium (V)		Cinderella Preludes		Ariel Preludes		Mickey Lobby Atrium (V)		Pinocchio Dk 4, Balcony		Minnie Lobby Atrium (V)		Ariel Preludes																
	Geppetto Dk 4, Balcony		Belle Preludes		Jiminy Dk 4, Balcony				Belle Preludes		Jiminy Dk 4, Balcony																								
FUN FOR ALL AGES	Bingo Pre-Sales		\$7,000 Mega Jackpot Bingo D Lounge		Walt Disney Theatre		Walt Disney Theatre		Walt Disney Theatre		Walt Disney Theatre		Walt Disney Theatre		Walt Disney Theatre		Walt Disney Theatre		Walt Disney Theatre		Walt Disney Theatre														
	Family Dance Party The Tube		Pin Trading Lobby Atrium		Majority Rules The Tube		Family Crafts D Lounge		Rock n Roll with Soul Duo Lobby Atrium																										
ADULTS	NCAA Basketball O'Gills Pub		Ultimate Disney Trivia O'Gills Pub		Live Piano with Clara Oman La Piazza		NCAA Basketball O'Gills Pub		Club DJ Mike West The Tube		Variety: Michael Harrison The Tube		POP! The Tube		Variety: Michael Harrison The Tube		Team Trivia O'Gills Pub		The Tube		90's Remix with Club DJ Mike West The Tube														
VIBE 14-17 YEARS OLD	Youth Activities Open House										Pump It Up					Gender Wars				Anyone Can Cook: Pizza															
EDGE 11-14 YEARS OLD	Open House		Disney Animation: Creating a Character		Tween Choice				Bingo				Anyone Can Cook: Pizza				Pajamarama Movie Night																		
OCEANEER LAB 3-12 YEARS OLD	Magic Show										Wacky Relays		Get the Hook		Magic PlayFloor		Youth Activities Open House																		
OCEANEER CLUB 3-12 YEARS OLD	Aloha Luau										Relay Games				Pluto's Pajama Party		Cartoon Time																		
											Scavenger Hunt																								

Symbol for activities that will be repeated during the cruise



FOLD

Fold along the dotted lines and take me with you so you don't miss any of the fun!

FOLD

YOUTH ACTIVITIES OPEN HOUSE  
A non-secured program with activities for families, adults and children to enjoy together.





# BUENA VISTA THEATRE

Deck 4 & 5, Midship



Open Captioning

3D

12:30 pm  
Duration:  
2 hrs 16 mins  
Rating: PG

3:15 pm  
Duration:  
1 hr 53 mins  
Rating: PG

5:30 pm & 8:00 pm  
Duration:  
1 hr 55 mins  
Rating: PG-13

10:30 pm  
Duration:  
1 hr 53 mins  
Rating: PG

## Character Appearances

### JESSIE

Lobby Atrium (V)  
8:30 am & 9:30 am  
**MINNIE MOUSE**  
Deck 4, Balcony  
8:45 am & 9:45 am  
Lobby Atrium (V)  
8:00 pm & 10:00 pm  
**CAPTAIN HOOK**

Preludes  
8:45 am & 9:45 am  
**WOODY**

Lobby Atrium (V)  
9:00 am & 10:00 am  
**QUEEN OF HEARTS**  
Deck 4, Balcony  
9:15 am & 10:15 am  
**PETER PAN**

Preludes  
9:15 am & 10:15 am  
**JAKE**

**THE NEVERLAND PIRATE**

Deck 4, Balcony  
3:00 pm & 4:00 pm  
**MICKEY MOUSE**  
Preludes - 3:15 pm  
Lobby Atrium (V)  
7:30 pm & 9:30 pm  
**DOC MCSTUFFINS**  
Deck 4, Balcony  
3:30 pm & 4:30 pm

### PLUTO

Preludes  
3:45 pm & 4:45 pm  
**DAISY DUCK**

Preludes - 4:15 pm  
**PRINCESS SOFIA**

Deck 4, Balcony - 5:00 pm  
**GEPPETTO**  
Deck 4, Balcony - 7:15 pm  
**CINDERELLA**

Preludes  
7:15 pm & 8:15 pm  
**PINOCCHIO**

Deck 4, Balcony  
7:45 pm & 9:45 pm  
**BELLE**

Preludes  
7:45 pm & 9:45 pm  
**JIMINY CRICKET**

Deck 4, Balcony  
8:15 pm & 10:15 pm  
**ARIEL**

Preludes  
9:15 pm & 10:15 pm



(H) Hallway - (S) Starboard Side - (P) Port Side - (V) Vestibule

For details of daily Disney character appearances, refer to the character line on your Navigator Grid, or the digital character board in the Lobby Atrium.

## SHIP DIRECTORY

### YOUTH ACTIVITIES

DISNEY'S OCEANEER CLUB	DECK 5, MID	9:00 AM - 12:00 PM
DISNEY'S OCEANEER LAB	DECK 5, MID	9:00 AM - 12:00 PM
EDGE	DECK 13, MID	9:00 AM - 1:00 PM
VIBE	DECK 4, FWD	10:00 AM - 2:00 PM
IT'S A SMALL WORLD NURSERY	DECK 5, MID	9:00 AM - 11:30 PM

### POOLS & MORE

\* Children under 12 must have adult supervision in pool areas.

AQUADUCK	DECK 12, MID	9:00 AM - 10:00 PM
AQUALAB	DECK 12, AFT	9:00 AM - 6:00 PM
DONALD'S POOL	DECK 11, MID	9:00 AM - 10:00 PM
MICKEY'S POOL	DECK 11, MID	9:00 AM - 10:00 PM
MICKEY'S SLIDE	DECK 11, MID	9:00 AM - 6:00 PM
NEMO'S REEF	DECK 11, MID	9:00 AM - 6:00 PM
QUIET COVE POOL (18+)	DECK 11, FWD	8:00 AM - 11:00 PM
SATELLITE FALLS (18+)	DECK 13, FWD	6:00 AM - 8:00 PM

Please note, "selfie sticks" are not permitted in the pools or on the slides.

Complimentary pool vests are available for children to use in the pools onboard.  
They are located on the pool deck.

### RECREATION

GOLF/SPORTS SIMULATORS	DECK 13, AFT	9:00 AM - 6:00 PM
GOOFY GOLF	DECK 13, AFT	8:00 AM - 10:00 PM
GOOFY'S SPORTS DECK	DECK 13, AFT	8:00 AM - 6:00 PM
MIDSHIP DETECTIVE AGENCY	DECKS 2 & 5, MID	9:00 AM - 10:00 PM
PORT ADVENTURES DESK	DECK 5, MID	8:00 AM - 11:00 AM 7:00 PM - 8:30 PM
SENSES FITNESS CENTER (18+)	DECK 11, FWD	6:00 AM - 10:00 PM

### GENERAL INFORMATION

ARR-CADE	DECK 11, AFT	24 HOURS
CONNECT@SEA	DECK 4, MID	8:00 AM - 11:00 AM 5:00 PM - 6:00 PM 7:00 PM - 10:00 PM
DISNEY VACATION CLUB	DECK 4, MID	8:30 AM - 10:30 AM 5:30 PM - 10:00 PM
DISNEY VACATION PLANNING	DECK 4, MID	9:00 AM - 11:00 AM 5:00 PM - 10:00 PM
GUEST SERVICES	DECK 3, MID	24 HOURS
HAIR BRAIDING	DECK 11, MID	9:00 AM - 9:30 PM
MEDICAL HEALTH CENTER	DECK 1, FWD	9:30 AM - 11:00 AM 4:30 PM - 7:00 PM
PORT SHOPPING DESK	DECK 4, MID	9:00 AM - 10:00 AM 7:30 PM - 8:30 PM
PRELUDES	DECK 3, FWD	5:45 PM - 8:45 PM
SENSES SPA AND SALON	DECK 11, FWD	8:00 AM - 10:00 PM
SHUTTERS PHOTO GALLERY	DECK 4, MID	10:00 AM - 10:30 PM
SHUTTERS DIGITAL	DECK 4, MID	10:00 AM - 10:30 PM

### SHOPPING

BIBBIDI BOBBIDI BOUTIQUE	DECK 5, MID	9:00 AM - 9:00 PM
MICKEY'S MAINSAIL	DECK 3, FWD	8:30 AM - 10:00 AM 6:30 PM - 11:00 PM
QUACKS	DECK 11, MID	
SEA TREASURES	DECK 3, FWD	8:30 AM - 10:00 AM 6:30 PM - 11:00 PM
VISTA GALLERY	DECK 4, MID	6:45 PM - 10:30 PM
WHITE CAPS	DECK 3, FWD	8:30 AM - 10:00 AM 6:30 PM - 11:00 PM
WHOZITS & WHATZITS	DECK 11, MID	8:45 AM - 10:00 AM 6:45 PM - 10:00 PM

**DINNER MENU**  
 Animator's Palate : Prince & Princess  
 Enchanted Garden : Prince & Princess  
 Royal Court : Prince & Princess  
 Dining Times: 5:45pm & 8:15pm  
**Evening Attire: Cruise Casual**

**DRINK OF THE DAY**  
 Yellow Bird (Alcoholic)  
 Lava Smoothie (Non-Alcoholic)

**WEATHER FORECAST**  
 Today: Partly Sunny  
 High: 78°F/26°C  
 Tomorrow: Sunny  
 High: 84°F/28°C

## DINING & LOUNGES

### BREAKFAST

CABANAS CONTINENTAL	DECK 11, AFT	6:45 AM - 7:15 AM
CABANAS	DECK 11, AFT	7:15 AM - 11:15 AM
ROYAL COURT	DECK 3, MID	8:00 AM - 9:30 AM

### LUNCH

CABANAS	DECK 11, AFT	11:45 AM - 2:15 PM
FILLMORE'S FAVORITES	DECK 11, MID	11:00 AM - 6:30 PM
LUIGI'S PIZZA	DECK 11, MID	11:00 AM - 6:30 PM
ROYAL COURT	DECK 3, MID	12:00 PM - 1:30 PM
TOW MATER'S GRILL	DECK 11, MID	11:00 AM - 11:00 PM

### DINNER

ANIMATOR'S PALATE	DECK 3, AFT	5:45 PM & 8:15 PM
ENCHANTED GARDEN	DECK 2, MID	5:45 PM & 8:15 PM
ROYAL COURT	DECK 3, MID	5:45 PM & 8:15 PM
CABANAS TABLE SERVICE	DECK 11, AFT	6:30 PM - 8:30 PM
PALO (18+) (RESERVATIONS REQ. & NOM. FEE APPLIES)	DECK 12, AFT	6:00 PM - 8:30 PM
REMY (18+) (RESERVATIONS REQ. & NOM. FEE APPLIES)	DECK 12, AFT	6:00 PM - 8:30 PM

### LATE NIGHT SNACKS

LA PIAZZA (18+)	DECK 4, AFT	10:45 PM - 11:45 PM
LUIGI'S PIZZA	DECK 11, MID	9:30 PM - 12:00 AM

### ADDED FEATURES

BEVERAGE STATION	DECK 11, MID	24 HOURS
EYE SCREAM	DECK 11, MID	11:00 AM - 11:00 PM
ROOM SERVICE	DIAL 0	24 HOURS

### ENTERTAINMENT - LOUNGES - BARS

Adults must be 21 and older to consume alcoholic beverages.

BON VOYAGE	DECK 3, MID	9:30 AM - 11:00 PM
COVE BAR (18+)	DECK 11, FWD	10:00 AM - 10:00 PM
COVE CAFE (18+)	DECK 11, FWD	6:30 AM - 12:00 AM
CURRENTS (18+)	DECK 13, FWD	11:00 AM - 11:00 PM
D LOUNGE	DECK 4, MID	SHOWTIMES
FROZONE TREATS	DECK 11, MID	11:00 AM - 6:00 PM
LA PIAZZA (18+ AFTER 9:00 P.M.)	DECK 4, AFT	4:00 PM - 12:00 AM
MERIDIAN (18+)	DECK 12, AFT	4:00 PM - 12:00 AM
O'GILLS PUB (18+ AFTER 9:00 P.M.)	DECK 4, AFT	3:00 PM - 12:00 AM
OOH LA LA (18+)	DECK 4, AFT	5:00 PM - 12:00 AM
OUTLOOK	DECK 14, MID	
SKYLINE (18+)	DECK 4, AFT	5:00 PM - 12:30 AM
THE TUBE (18+ AFTER 9:00 P.M.)	DECK 4, AFT	7:00 PM - 8:30 PM 9:30 PM - 2:00 AM
VISTA CAFE	DECK 4, MID	7:00 AM - 11:00 PM
WAVES	DECK 12, AFT	10:00 AM - 6:00 PM

Public Health Advisory: Consuming raw or under-cooked meats, poultry, seafood, shellfish, or eggs may increase your risk for food borne illness, especially if you have certain medical condition.

All Ashore: Refer to Tender Letter  
All Aboard: 5:30 pm

**SHIP'S AGENT IN GRAND CAYMAN**  
 Bodden Shipping Agency, Fifth Floor,  
 Room 508, Gorang Avenue,  
 GT Grand Cayman,  
 Tel: 345-949-6254 or 345-949-7424

**IMPORTANT NUMBERS**  
 Fire/Security: 7-3001  
 Medical EMERGENCY: 7-3000  
 Health Center: 7-1923





## TENDERING INFORMATION FOR GRAND CAYMAN

When arriving in Grand Cayman tomorrow, we will be utilizing small boats to transport you to the island shore. This is called a Tender Service, using Tender Boats. This service is provided by a local company in Grand Cayman. In order to make sure every Guest is transported safely, we suggest that you follow the Safety Guidelines below.

### SAFETY INSTRUCTIONS:

1. Do not crowd in gangway areas.
2. Have your hands free to use the railings.
3. Wear comfortable, safe shoes since areas might be slippery.
4. Wait for a signal from the Crew Member in charge to board or disembark.
5. Follow instructions of the Crew Members.
6. Use any hand rails and do not jump or run while boarding
7. Sit down while in the tender boat at all times. Do not stand up as the tender boat approaches the pier or the ship. Remain seated in your seat row until you can step directly to the boarding point without standing in line. Keep in mind that there may be sudden movements while the tender boat is along side the ship, due to the motion of the seas.
8. No smoking in the tender or in line.
9. Notify Crew Member if you have any problems or feel uncomfortable.

**Please listen to all public area announcements for updates.**

### ALL GUESTS

You will need your 'Key to the World' card (every Guest) and Photo ID (Guests 18 years and older) ready as you debark the ship. Please follow the tendering process below that pertains to you. Tenders will run continuously throughout the day from the Disney Fantasy to Grand Cayman Royal Watler Pier and back. **Last Tender back to the ship is at 5:30 pm**

**Please note: Regulation on agriculture and food; Meat, fruit, sandwiches, dairy products, vegetables, plants and seeds are not allowed on or off of the ship.**

### FOR GUESTS WITHOUT PORT ADVENTURES

Tendering will begin at approximately 10:30 am with a Tender Ticket process in the **Walt Disney Theatre, Deck 3, Forward**. Please allow **30 - 40 minutes** for this process. We ask that you collect all members of your party before proceeding to **Walt Disney Theatre**, at which point you will be seated until the next available tender boat is ready for boarding. Ticket distribution will run until approximately 12:30 pm or when open tenders are announced, allowing you to proceed directly to a gangway on Deck 1 without a ticket.

### FOR GUESTS GOING ON PORT ADVENTURES

- **If your Port Adventure meets before 11:45 am**  
Please meet at your designated excursion meeting location onboard at the time listed on your Port Adventure Ticket.
- **If your Port Adventure meets after 11:45 am or later and you ARE NOT planning to go ashore prior to your excursion meeting time:**  
Please meet on the Royal Watler Pier. You should allow at least **30 minutes** for tender travel time before your excursion meeting time on the pier. An announcement will be made when tender tickets are no longer required - approximately 11:45 am or when announced. Until then, please follow the process outlined above for guests without Port Adventures, please meet in **Walt Disney Theatre, Deck 3, Forward** to collect a tender ticket.
- **If your Port Adventure meets at 11:45 am or later and you'd like to spend the morning in Grand Cayman, then meet your excursion on the pier:**

You may go ashore starting at approximately 10:30 am Please meet in **Walt Disney Theatre, Deck 3, Forward**, to pick up a Tender Ticket and follow the process as outlined above for guests without Port Adventures. You should allow at least **30 minutes** for tender travel time. Remember to meet on the pier at the specified time listed on your Port Adventure ticket.

Towels will be provided for all water-based excursions. For those Guests not on a Port Adventure, towels are available on the pool deck, Deck 11. **We kindly ask you to return all towels back to the ship.** All excursions will return to the Royal Watler Pier area, where tender service will run continuously back to the Disney Fantasy until 5:30 pm

**THE LAST TENDER BACK TO THE DISNEY FANTASY WILL LEAVE THE ROYAL WATLER PIER AT 5:30 PM WE ENCOURAGE GUESTS TO RETURN EARLIER TO AVOID POSSIBLE LONG DELAYS FOR THE RETURN TENDER SERVICE.**