

# PERSONAL NAVIGATOR



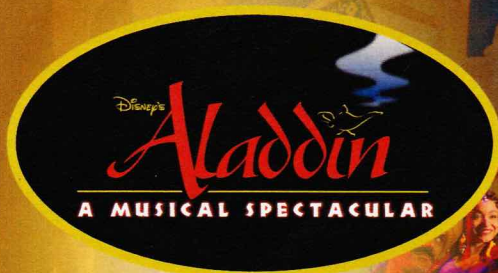
SUNDAY, JANUARY 22, 2017

Sunrise 7:06 am Sunset: 6:11 pm

Evening Attire: Formal

Today: Partly Sunny High: 80°F/27°C  
Tomorrow: Partly Sunny High: 78°F/26°C

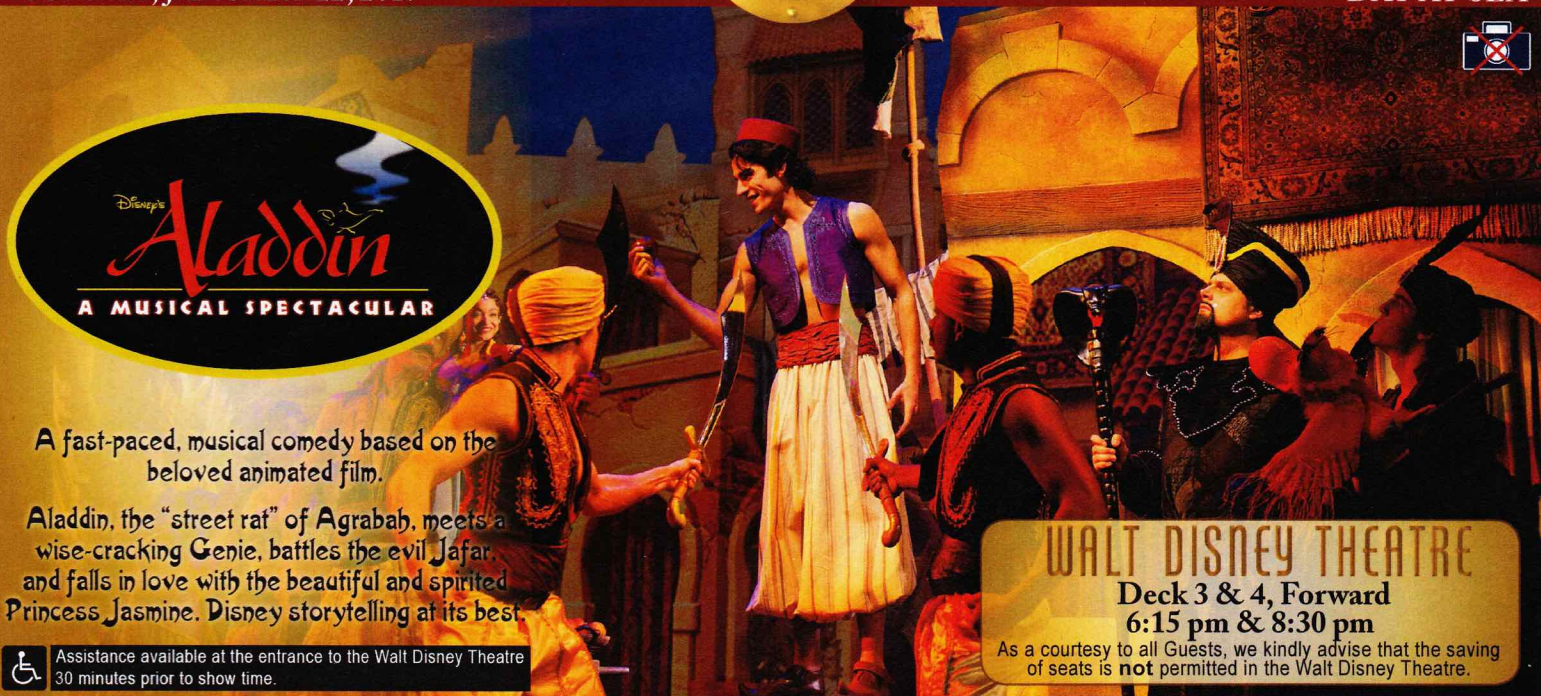
DAY AT SEA



A fast-paced, musical comedy based on the beloved animated film.

Aladdin, the "street rat" of Agrabah, meets a wise-cracking Genie, battles the evil Jafar, and falls in love with the beautiful and spirited Princess Jasmine. Disney storytelling at its best.

Assistance available at the entrance to the Walt Disney Theatre 30 minutes prior to show time.



WALT DISNEY THEATRE

Deck 3 & 4, Forward  
6:15 pm & 8:30 pm

As a courtesy to all Guests, we kindly advise that the saving of seats is **not** permitted in the Walt Disney Theatre.

## Disney FANTASY Fun Facts

**Tonnage:** 130,000 Gross Tons

**Height:** 216 Feet

**Length:** 1115 Feet

### Important Dates

**Name Announcement:** March 10, 2009

**Steel Cutting:** March 16, 2010

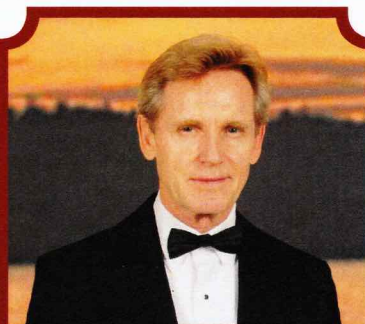
**Keel Laying:** February 11, 2011

**Delivery:** February 9, 2012

Almost four football fields in length, the Disney Fantasy is longer than the height of the Eiffel Tower in Paris (1,063 feet). She is also longer than the height of New York City's famous Chrysler building (1,047 feet).

### The Disney Fantasy's Whistle

The Disney Fantasy's whistle, a prominent element of the "Sailing Away" deck party at the start of the cruise, is quite the musical talent. It's able to perform not just the first musical line of "When You Wish Upon a Star" but also the second line of the song ("makes no difference who you are") plus several measures of "Yo Ho (A Pirate's Life for Me)," "It's a Small World," "Be Our Guest," "Hi Diddle Dee Dee (An Actor's Life for Me)," "A Dream is a Wish," and "Do you want to build a Snowman".



### CAPTAIN'S RECEPTION

Enjoy live music and a cocktail while meeting some of the ship's officers.

Lobby Atrium, Deck 3, Midship,

5:15 pm & 7:30 pm

Enjoy an exclusive photo opportunity with Commodore Tom at

5:30 pm & 7:30 pm, Lobby Atrium

## Don't Miss:

### Good Morning Disney Fantasy

Channel 5 - Repeated from 5:00 am - 12:00 pm

Tune in to channel 5 as your Cruise Director highlights the upcoming events and activities for the day.

### Michael Harrison: Ventriloquism Workshop

The Tube, Deck 4, Aft - 1:00 pm

Come learn the history, tricks and techniques of this ancient art form with master ventriloquist, Michael Harrison.

### Anyone Can Cook: Sea Bass (18+)

D Lounge, Deck 4, Midship - 2:15 pm

From our galley to yours. Join our chefs as they show you how to prepare delicious dishes. Today's Menu - Sea Bass.

### Match Your Mate (18+)

The Tube, Deck 4, Aft - 10:30 pm

It's time to play everyone's favorite couples game show, Match Your Mate!



### Welcome Aboard Photo Raffle

Stop at Shutters today before 11:00 am and drop of your raffle ticket, for a chance to win a 10 Digital Photo Package worth \$149.95.

\*Terms & Condition apply.

## DINNER MENU

Animator's Palate : Pacific Rim Cuisine

Enchanted Garden : Continental Market Cuisine

Royal Court : French Cuisine

## DRINK OF THE DAY

Bahama Mama (Alcoholic)

Coco Bali (Non-Alcoholic)

### IMPORTANT NUMBERS

Fire/Security: 7-3001

Medical Emergency: 7-3000

Health Center: 7-1923



# ADULT ACTIVITY HIGHLIGHTS



## SENSES SPA FITNESS CLASSES & SEMINARS

*Pure Form Pilates* - Donald's Pool - 7:00 am  
*Fab Abs* - Senses Spa & Salon - 7:45 am  
*Body Sculpt Boot Camp* (Nom. Fee) - Senses Fitness Center - 8:30 am  
*Acupuncture Seminar* - Senses Spa & Salon - 9:15 am  
*Detox for Health & Weight Loss* - Senses Spa & Salon - 10:30 am  
*Non-Surgical Facelift* - Senses Spa & Salon - 11:30 am  
*Acupuncture: Pain & Stress Relief* - Senses Spa & Salon - 1:15 pm  
*Good Feet Seminar: Walking In Comfort* - Senses Spa & Salon - 2:00 pm  
*Secrets to a Flatter Stomach* - Senses Spa & Salon - 2:30 pm  
*Thermage Skin Tightening* - Senses Spa & Salon - 3:15 pm  
*Tour De Cycle* (Sign-Up Required) - Senses Fitness Center - 4:00 pm  
*Complimentary Footprint Analysis* - Senses Spa & Salon - 5:00 pm

## 1820 SOCIETY: 2000'S MUSIC CHALLENGE

*O'Gills Pub, Deck 4, Aft - 12:00 pm*

Join your Cruise Staff as we navigate our way through the music of the 2000's.



## 1820 SOCIETY: MINI GOLF

*Goofy Golf, Deck 13, Aft - 3:45 pm*

Can you get a hole in one? Give it a try with some mini golf.

## 1820 SOCIETY: ICE CREAM SOCIAL

*Frozone Treats, Deck 11, Midship - 9:45 pm*

Join your fellow Society members for some ice cream and conversation.

## ART OF THE THEME SHOW TOUR

*Meridian, Deck 12, Aft - 9:00 am*

Join us for a guided tour highlighting the design, Imagineering and artistry of the ship. This tour is reserved for Guests 18 and over.

## PUB QUIZ

*O'Gills Pub, Deck 4, Aft - 10:00 am*

Join us as we test your knowledge against your fellow Guests at our Pub Quiz challenge.



## ANYONE CAN COOK: SEA BASS

*D Lounge, Deck 4, Midship - 2:15 pm*

From our galley to yours. Join our chefs as they show you how to prepare delicious dishes. Today's Menu - Sea Bass.

## BEATLES TRIBUTE WITH SOUL DUO

*La Piazza, Deck 4, Aft - 9:15 pm*

Join Soul Duo as they play live for your listening pleasure.



# FUN FOR ALL AGES HIGHLIGHTS

## DISNEY TRIVIA

*La Piazza, Deck 4, Aft - 10:30 am*

Navigate your way through a round of questions to test how much you really know about Disney.

## TODDLER TIME

*Outlook, Deck 14, Midship - 10:30 am & 2:30 pm*

Join us for some fun activities that your toddler is sure to enjoy.



## DIAMOND JACKPOT BINGO

*Bingo Pre-Sales start at 11:00 am*

*D Lounge, Deck 4, Midship - 11:15 am*

Join us for 4 cash prize games and your chance to win a diamond pendant! Everyone attending will also receive a voucher to collect a free Diamonds International charm bracelet! Complete the Big X in 20 numbers or less, and \$500 could be yours. If not we continue to play for the highest cash prize of the session! Pre-Sales start 15 minutes prior to the game.

## PORT SHOPPING TALK

*Buena Vista Theatre, Deck 4 & 5, Midship - 11:15 am*

Join your Port Shopping Guide to learn about the incredible tax & duty free shopping ashore this cruise! Free charm bracelet for all in attendance and a raffle to win a diamond pendant!



## DISNEY VACATION CLUB GROUP PREVIEW

*D Lounge, Deck 4, Midship - 12:30 pm*

*The Tube, Deck 4, Aft - 4:15 pm*

Want to learn more about taking magical vacations year after year? Please see a Disney Vacation Club representative on Deck 4, Midship, or call 7-2805 from your stateroom phone for more information about our interactive group presentation.

## ULTIMATE DISNEY TRIVIA

*La Piazza, Deck 4, Aft - 1:45 pm*

Join us for the Ultimate test of your Disney Knowledge in this fun trivia.



## CHIP-IT GOLF (12+)

*Lobby Atrium, Deck 3, Midship - 3:30 pm*

It's par for the course for our Guests 12 and older to compete on our special "greens" in this fun tournament.



## \$5,000 MEGA JACKPOT SENSES SPA BINGO

*Bingo Pre-Sales start at 4:00 pm*

*D Lounge, Deck 4, Midship - 4:15 pm*

Don't miss your chance to take home big money! 4 CASH prize games and great raffle prizes to be won! Complete the fourth game in 46 numbers or less and win the \$5,000 Mega Jackpot! Plus get Spa Prizes that will pamper you, including a mini facial and massages all courtesy of the Senses Spa and Salon. Pre-Sales start 15 minutes prior to game.



## SO YOU THINK YOU KNOW YOUR FAMILY?

*D Lounge, Deck 4, Midship - 7:30 pm*

This fun-filled family game show is always full of surprises. Find out how well you know, or don't know your family!



# YOUTH ACTIVITIES HIGHLIGHTS

## DINE & PLAY

A convenience for families dining at 8:15 pm, our Youth Activities counselors will be available at 9:15 pm at the entrance of Royal Court, Enchanted Garden and Animator's Palate dining rooms to bring registered children to join the fun in the Youth Activity areas.



**Deck 5, Midship (7-1440)**  
(3-12 years old)

9:00 am - 12:00 am

## MICKEY'S PUZZLE PLAYTIME

11:30 am

Come and play with Mickey & friends as they share their favorite games, puzzles and dances!

## TOY STORY BOOT CAMP

3:15 pm

Join Corporal Green in our own version of boot camp as we learn how to have fun - The Toy Story way!



**Deck 5, Midship (7-1445)**  
(3-12 years old)

9:00 am - 12:00 am

## GET THE HOOK

3:15 pm

A villainous villain has stolen Captain Hook's prized golden hook. Become a member of the Top Deck Detective Agency and help solve the clues to retrieve Hook's hook.

## PISTON CUP CHALLENGE

10:00 pm

It's Dinoco time and you're part of the pit crew! Design your own race car and see if you've got what it takes to end up in the winner's circle!



**Deck 13, Midship (7-9743)**  
(11-14 years old)

9:00 am - 1:00 am

## BRAINS AND BRAWNS

2:30 pm

You will compete against each other to solve clues, take part in physical challenges, and reach the finish first.

## MAGIC SHOW

7:30 pm

The Magnificent Magician will demonstrate to you some of the best known magic tricks on the sea.



**Entrance on Deck 4, Forward (7-9418)**  
(14-17 years old)

9:00 am - 2:00 am

## ZOMBIFIED

12:00 pm

A big movie producer is looking for zombies to help him film the finale to his latest masterpiece, Zombified.

## DREAM NOW! SEA HOW! - CREATE IT

3:30 pm

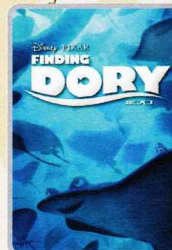
Imagine a job where your days are spent dreaming up plots, characters, designs or mechanics that only come from one place... In this VIP Experience you will meet one of the creative minds with Disney. A special Guest will ignite your imagination and answer your questions.

# BUENA VISTA THEATRE

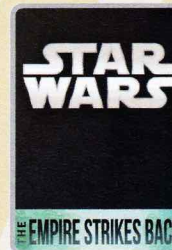
Deck 4 & 5, Midship  
Today's Movies



FAMILY MOVIE  
FUN TIME  
8:30 am  
Duration:  
1 hr 53 mins  
Rating: PG



3D  
12:45 pm  
Duration:  
1 hr 45 mins  
Rating: PG



3:00 pm  
Duration:  
2 hrs 4 mins  
Rating: PG



5:30 pm & 8:00 pm  
Duration: 1 hr 53 mins  
Rating: PG



3D  
10:30 pm  
Duration: 1 hr 55 mins  
Rating: PG-13

## FAMILY VARIETY ACT

Featuring the  
Beatboxing & Comedy of  
Bronkar Lee,  
as he entertains  
the entire family  
in this fun-filled show.

*The Tube,  
Deck 4, Aft,  
7:30 pm*

## ADULT GAME SHOW

It's time to play  
everyone's favorite couple's  
game show,  
Match your Mate!

*The Tube (18+),  
Deck 4, Aft,  
10:30 pm*

## YOUTH ACTIVITIES OPEN HOUSE

Open House is an opportunity for all to come and participate in a variety of exciting activities and free time in the Oceaneer Club, Oceaneer Lab, it's a small world nursery, Vibe and Edge throughout the cruise. During these times secured programming will still be offered in the other venue for those looking to check their children into care.

Disney's Oceaneer Lab: 7:00 pm - 8:30 pm  
Edge: 9:00 am - 10:00 am & 6:00 pm - 7:30 pm  
Vibe: 9:00 am - 10:00 am & 7:30 pm - 9:00 pm



# MORE TO ENJOY WHILE ONBOARD

## EASTERN CARIBBEAN

Disney Cruise Line offers a variety of sailings to exotic ports in the Caribbean, including port of Tortola, in the British Virgin Islands. Most voyages even include a stop at Disney Castaway Cay. Visit the Disney Vacation Planning desk, Deck 4, Midship, for more information. Disney Vacation Planning tends to get busy on the last day of sailing. Don't miss the opportunity to plan your next Disney vacation.

## DISNEY VACATION CLUB® GROUP PREVIEW

Want to learn more about taking magical vacations year after year? Please see a Disney Vacation Club representative on Deck 4, Midship, or call 7-2805 from your stateroom phone for more information about our interactive group presentation.

## PORT SHOPPING INFORMATION

Join your Port Shopping Guide, Maureen, to learn about the incredible tax & duty free shopping ashore this cruise. Everything from diamonds to t-shirts, Rolex to rum-cake! Port Shopping Talk, Buena Vista Theatre, Deck 4, Midship, 11:15 am. FREE Charm Bracelet for everyone who attends! Raffle to win OVER \$1000 in prizes & giveaways! Later, join Candice and Mark as they give insider tips on shopping for gemstones in the Caribbean at the Diamond & Gemstone Seminar, The Tube, Deck 4, Aft, 3:00 pm.



## SPA SPECIAL: IONITHERMIE

Would you like to lose between 1 - 8 inches?  
Speed up your metabolism?  
Firm your muscle tone?  
Improve appearance of cellulite?  
If so, then Ionithermie is the best treatment for you!  
50 minutes for \$155

Senses Spa & Salon, Deck 11, Forward, Extension 7-1465

## SOPHIA FIORI DIAMONDS

Discover the elegant Disney inspired diamond jewelry collection by Sophia Fiori, one of the world's leading designers of diamond jewelry.

AVAILABLE AT WHITE CAPS  
DECK 3, FORWARD



## FORMAL PORTRAITS TONIGHT!

Now that the family is dressed up and ready to enjoy the evening, capture the memories in your formal attire by visiting our professional portrait studios located in the Lobby Atrium, Deck 3, Midship.

5:15 pm - 6:00 pm  
7:15 pm - 8:30 pm  
9:30 pm - 10:15 pm

\*Please note that photos are available for viewing on our interactive photo kiosks approximately five hours after being taken and are only available for purchase during this cruise. Photo sizes are preset and cannot be changed.

DF0235 01-22-2017 ©DISNEY

## IMPORTANT INFORMATION

### Security Notice

All Guests (including children) who wish to disembark the ship are required to present their Key to the World card at the gangway. A photo ID is also required for those Guests who are 18 years of age or older. Guests under the age of 18 are required to have a parent, guardian or other responsible adult sign an authorization form at the Guest Services Desk if they wish to go ashore unaccompanied or with any adult from another stateroom.

### Insect Repellent Advisory

Protect against mosquito bites and related illnesses when going ashore. Insect repellent is available for purchase in White Caps. When using both sunscreen and insect repellent, use sunscreen first and apply insect repellent on top of sunscreen.

### Cold and Flu Reminder

Please wash hands frequently and thoroughly, particularly before meals. Contact the Health Center by dialing 7-1923, should anyone in your party become ill.

### Corridor Quiet Hours

As a courtesy to all our Guests, please recognize quiet hallway hours from 10:00 pm til 8:00 am

### Inclement Weather

For the safety of all Guests, outdoor events may be changed due to unforeseen weather conditions.

### Environmental Message

With Disney's commitment to the Environment, please refrain from throwing anything over the Ship's side. Thank you!

### No Reserved Seats Policy

As a courtesy to all our Guests, we kindly advise that the saving of seats is not permitted in the Walt Disney Theatre, and the saving of the sun loungers is not permitted on Deck 11, 12, and 13. Items left unattended will be returned to lost and found at Guest Services, Deck 3 Midship.

## Connect @ Sea

We are now offering a NEW and improved Internet service to stay connected on your cruise like no other in the industry! Internet packages range from \$0.25 per MB - \$89.00 (1000 MB package). For more information contact your Connect@Sea Expert or Guest Services onboard.

## ONBOARD AIRLINE CHECK IN

Stop by the Guest Services Desk, Deck 3, Midship to find out about enrolling in our Onboard Airline Check In Service.



## CASTAWAY CAY 5K REGISTRATION (10+)

Sign up today for the Castaway Cay 5K! Please visit the Port Adventures Desk or the Guest Services Desk to register at anytime prior to our arrival at Disney Castaway Cay. Please note that runners must be 10 years of age or older to participate. Additionally, no strollers, motorized wheelchairs or scooters, are permitted to participate in the Castaway Cay 5K.

## MIDSHIP DETECTIVE AGENCY

The puppies from 101 Dalmatians have gone missing! Use your special detective "badge" to track down the puppies and catch the villain who took them. Decks 2 & 5, Midship.



The best way to explore our ports of call is through the eyes of a Port Adventure. Be adventurous and climb up Dunn's River Falls or explore the Green Grotto Caves in Falmouth. Why not swim with stingrays in Grand Cayman or explore the ruins in Cozumel.

Visit the Port Adventures Desk, Deck 5, Midship, for more information.

## SHOPPING

### BIBBIDI BOBBIDI BOUTIQUE

Young Princesses and Princes can get ready for a formal evening with a makeover at the Bibbidi Bobbidi Boutique. Make your reservations by visiting Bibbidi Bobbidi Boutique, Deck 5, Midship or dialing extension 7-9438. Limited space available.

### SOPHIA FIORI GUESS THE CARAT WEIGHT

Whoever guesses closest wins a Sophia Fiori fine jewelry piece! Winner announced tonight at 7:30 pm. Must be present to win. White Caps, Deck 3, Forward.

### STYLISH TAG HEUER WATCHES

TAG Heuer is one of the largest and fastest growing Swiss brands and is in a constant quest for innovation and high precision. Stop by White Caps today where you'll discover the luxury and style of a TAG Heuer watch. White Caps, Deck 3, Forward.

### THOMAS KINKADE: HIDDEN CHARACTER CHALLENGE!

Known as the "Painter of Light," Thomas Kinkade is one of Disney's most celebrated artists having created an array of enchanting artwork. Stop by the Vista Gallery today to view his unique collection of paintings featuring some of your favorite Disney characters! Also, take the time to try and find all of the hidden Disney characters scattered throughout his paintings. Are you up to the challenge? Deck 4, Midship.

### ALEX AND ANI AVAILABLE ONBOARD!

Perfect for the Disney fan with a flair for fashion, head to White Caps where you'll find the stylish bangles by Alex and Ani featuring Disney-inspired charms such as the specially designed Disney Cruise Line charm. Deck 3, Forward.

### THE PIRATES LEAGUE

Shiver me timbers! Pirates are invading the Bibbidi Bobbidi Boutique tomorrow and are looking to transform you into a swashbuckling pirate to join their crew. Make your reservations by visiting Bibbidi Bobbidi Boutique, Deck 5, Midship or dialing extension 7-9438. Limited space available.

### Smoking

For the comfort of our Guests, the following areas are designated as smoking areas:

\*Deck 13, forward, port side by Currents

\*Deck 12, aft, port side outdoor area that is accessible through the Meridian Lounge

\*Deck 4, aft, port side from 6:00 pm to 6:00 am only (all of Deck 4 is non-smoking from 6:00 am to 6:00 pm)

Smoking is prohibited inside all Guest staterooms and on stateroom verandahs. Guests found smoking in their staterooms or on their verandahs will be charged a \$250 stateroom recovery fee. Electronic cigarettes may only be used in designated smoking areas.

### Walt Disney Theatre

Theatrical performances may use artificial fog, strobe lights, pyrotechnics and other special effects. For the safety of our performers and the comfort of those around you, the use of any photography, video recording device or any electronic equipment is prohibited.

### Verandah Safety

Please do not leave any combustible materials on your balcony when not present in your stateroom for safety reasons.



Morning	8:30	8:45	9:00	9:15	9:30	9:45	10:00	10:15	10:30	10:45	11:00	11:15	11:30	11:45	12:00	12:15	12:30	12:45	1:00	1:15	1:30		
FUNNEL VISION	A Goofy Movie (G)  Open Captioning Funnel Vision					Frozen (PG)  Open Captioning Funnel Vision					Inside Out (PG)  Open Captioning Funnel Vision												
BUENA VISTA THEATRE	Family Movie Fun Time: Moana (PG) Duration: 1 Hour 53 Minutes										Port Shopping Talk					Finding Dory (PG) Duration: 1 Hour 45 Minutes							
CHARACTERS			Buzz Lobby Atrium (V)		Woody Lobby Atrium (V)		Buzz Lobby Atrium (V)		Woody Lobby Atrium (V)		Queen of Hearts Dk 4, Balcony		Mad Hatter Dk 4, Balcony		Queen of Hearts Dk 4, Balcony		Mad Hatter Dk 4, Balcony		White Rabbit Dk 4, Balcony				
	Joy Preludes		Stitch Preludes		Joy Preludes		Stitch Preludes		Peter Pan Preludes		Cpt. Hook Preludes		Peter Pan Preludes		Cpt. Hook Preludes		Max Preludes		Goofy Preludes				
FUN FOR ALL AGES			Crafts: 3D Crafts La Piazza				Disney Trivia La Piazza		Bingo Pre Sales		Diamond Jackpot BINGO D Lounge						Michael Harrison VENTRILOQUISM WORKSHOP The Tube						
	Interdenominational Service Outlook					Walking Ship Tour Preludes			Toddler Time Outlook			Crafts: Door Hangers La Piazza			Disney Vacation Club Group Preview D Lounge								
ADULTS	Friends of Bill W. Outlook	Art of The Theme Show Tour Meridian					Pub Quiz O'Gills Pub			Sports Trivia O'Gills Pub			Port Shopping Talk Buena Vista Theatre			1820 Society: 2000s Music Challenge O'Gills Pub		Cruisin' Solo Lunch Royal Court		Watch Seminar La Piazza			
	Boot Camp (Nom. Fee) Senses Fitness Center																TV Tunes Trivia O'Gills Pub		Crafts: Origami Favorites O'Gills Pub				
VIBE 14-17 YEARS OLD	Youth Activities Open House					Open for Teens			Coffee Break			Disney Scene It			Zombified								
EDGE 11-14 YEARS OLD	Youth Activities Open House					Four Square				That's Hilarious				Marshmallow Olympics				Trivia Challenge					
OCEANEER LAB 3-12 YEARS OLD	Human Bingo		Magic PlayFloor			Super Sloppy Science				Stitch's Adventure Squad				Lunch				Wacky Relays					
OCEANEER CLUB 3-12 YEARS OLD	Pre-School Fun (3-5 Years Old)					Magic Show			Memory Wall		Mickey's Puzzle Playtime		Aloha Luau										
	Little Einstein's Adventure																						
Afternoon	1:45	2:00	2:15	2:30	2:45	3:00	3:15	3:30	3:45	4:00	4:15	4:30	4:45	5:00	5:15	5:30	5:45	6:00	6:15	6:30	6:45		
FUNNEL VISION	NFL Football: Atlanta Falcons vs. Green Bay Packers Funnel Vision (Subject to Satellite availability)										NFL Football Funnel Vision												
BUENA VISTA THEATRE	Star Wars: Episode V. The Empire Strikes Back (PG) Duration: 2 Hours 4 Minutes										Moana (PG) Duration: 1 Hour 53 Minutes												
CHARACTERS	Tinker Bell Lobby Atrium (V)		White Rabbit Dk 4, Balcony		Tinker Bell Lobby Atrium (V)		Geppetto Dk 4, Balcony		Jiminy Dk 4, Balcony		Pinocchio Dk 4, Balcony		Geppetto Dk 4, Balcony		Jiminy Dk 4, Balcony		Pinocchio Dk 4, Balcony						
	Max Preludes		Goofy Preludes		Pluto Preludes		Mickey Preludes		Pluto Preludes		Mickey Preludes		Minnie Preludes		Goofy Preludes								
FUN FOR ALL AGES	(PG) Walt Disney Theatre Duration: 1 Hour 53 Minutes Doors Open 15 mins prior 					Chip It GOLF Lobby Atrium (12+)			Bingo Pre Sales		\$5,000 Mega Jackpot Senses Spa BINGO D Lounge			Captain's Welcome Reception Lobby Atrium									
	Ultimate Disney Trivia La Piazza	Toddler Time Outlook		Disney Tunes Trivia La Piazza		Family Crafts La Piazza			Disney Vacation Club Group Preview The Tube			Classic Jazz with Fine Whines Lobby Atrium			Family Crafts D Lounge								
ADULTS	Brainteasers O'Gills Pub	 D Lounge - Sea Bass				Diamond & Gemstone Seminar The Tube			1820 Society: Mini Golf Goofy Golf			Live Guitar with Selkie Quiet Cove			Live Piano with Clara Oman La Piazza			Footprint Analysis Senses Spa & Salon					
VIBE 14-17 YEARS OLD	Zombified	Dive into DJ'ing					Dream Now! Sea How! - Create It					Marshmallow Olympics			Foosball Tournament			Cards Tournament					
EDGE 11-14 YEARS OLD	Craft Corner		Brains and Brawns				Anyone Can Cook: Cookies					Sports Deck Fun			Youth Activities Open House								
OCEANEER LAB 3-12 YEARS OLD	Anyone Can Cook					Get the Hook			Four Square			Around the World in 7 days			Dinner								
OCEANEER CLUB 3-12 YEARS OLD	Cruisin' with Crush			Scavenger Hunt			Toy Story Boot Camp			Tinker Bell's Talent Show													
Evening	7:00	7:15	7:30	7:45	8:00	8:15	8:30	8:45	9:00	9:15	9:30	9:45	10:00	10:15	10:30	10:45	11:00	11:15	11:30	11:45	12:00		
FUNNEL VISION	NFL Football: Pittsburgh Steelers vs. New England Patriots Funnel Vision (Subject to Satellite availability)										Guardians of the Galaxy (PG-13)  Open Captioning Funnel Vision (Pending end of game)												
BUENA VISTA THEATRE	Moana (PG) Duration: 1 Hour 53 Minutes										Dr. Strange (PG-13) - 3D Duration: 1 Hour 55 Minutes												
CHARACTERS	Mickey Dk 4, Balcony	Minnie Preludes	Mickey Dk 4, Balcony	Donald Preludes	Mickey Dk 4, Balcony		Minnie Preludes	Mickey Dk 4, Balcony	Donald Preludes	Mickey Dk 4, Balcony	Minnie Preludes	Donald Dk 4, Balcony	Mickey Dk 4, Balcony	Minnie Preludes									
	Chip & Dale Lobby Atrium (V)		Tiana Lobby Atrium (V)		Chip & Dale Lobby Atrium (V)		Goofy Lobby Atrium (V)		Pluto Lobby Atrium (V)		Daisy Lobby Atrium (V)												
FUN FOR ALL AGES	Captain's Welcome Reception Lobby Atrium								Formal Night After Party D Lounge			 D Lounge											
	Variety: Bronkar Lee The Tube																						
	So You Think You Know Your Family? D Lounge					Family Crafts D Lounge			Classic Jazz with Fine Whines Lobby Atrium														
ADULTS	Live Piano with Clara Oman La Piazza								Club DJ Mike West The Tube			Snippets The Tube			 The Tube			Going Underground with Club DJ Mike West The Tube					
	NFL Football: Pittsburgh Steelers vs. New England Patriots O'Gills Pub (Subject to Satellite availability)										Beatles Tribute with Soul Duo La Piazza					Live Music with Soul Duo La Piazza							
VIBE 14-17 YEARS OLD	Youth Activities Open House					Pump It Up					Bring It!					Gender Wars							
EDGE 11-14 YEARS OLD	Open House	Magic Show				Tween Choice				Video Game Challenge			Pictionary			Gender Wars			Karaoke				
OCEANEER LAB 3-12 YEARS OLD	Youth Activities Open House					Lights, Camera, Improv!					Piston Cup Challenge												
	Hula Hoop Jam		Anyone Can Cook																				
OCEANEER CLUB 3-12 YEARS OLD	Dress Up Fun		Once Upon a Time			Magic PlayFloor				Pluto's Pajama Party				Cartoon Time									

Symbol for activities that will be repeated during the cruise



FOLD

Fold along the dotted lines and take me with you so you don't miss any of the fun!

FOLD

YOUTH ACTIVITIES OPEN HOUSE  
A non-secured program with activities for families, adults and children to enjoy together.





**SUNDAY, JANUARY 22, 2017 DAY AT SEA**

# BUENA VISTA THEATRE

Deck 4 & 5, Midship



FAMILY MOVIE  
FUN TIME



8:30 am Duration: 1 hr 53 mins Rating: PG	12:45 pm Duration: 1 hr 45 mins Rating: PG	3:00 pm Duration: 2 hrs 4 mins Rating: PG	5:30 pm & 8:00 pm Duration: 1 hr 53 mins Rating: PG	10:30 pm Duration: 1 hr 55 mins Rating: PG-13
--	---	--	--	--

## Character Appearances

### JOY

Preludes  
9:00 am & 10:00 am  
**BUZZ LIGHTYEAR**  
Lobby Atrium (V)  
9:15 am & 10:15 am  
**STITCH**  
Preludes  
9:30 am & 10:30 am  
**WOODY**  
Lobby Atrium (V)  
9:45 am & 10:45 am  
**PETER PAN**  
Preludes  
11:00 am & 12:00 pm  
**QUEEN OF HEARTS**  
Deck 4, Balcony  
11:15 am & 12:15 pm  
**CAPTAIN HOOK**  
Preludes  
11:30 am & 12:30 pm  
**MAD HATTER**  
Deck 4, Balcony  
11:45 am & 12:45 pm  
**MAX**  
Preludes  
1:00 pm & 2:00 pm  
**WHITE RABBIT**  
Deck 4, Balcony  
1:15 pm & 2:15 pm  
**GOOFLY**  
Preludes  
1:30 pm, 2:30 pm & 5:30 pm  
Lobby Atrium (V) - 9:15 pm  
**TINKER BELL**  
Lobby Atrium (V)  
1:45 pm & 2:45 pm

### PLUTO

Preludes  
3:00 pm & 4:00 pm  
Lobby Atrium (V) - 9:45 pm  
**GEPPETTO**  
Deck 4, Balcony  
3:15 pm & 4:45 pm  
**MICKEY MOUSE**  
Preludes  
3:30 pm & 4:30 pm  
Deck 4, Balcony  
7:15 pm, 7:15 pm, 7:45 pm,  
8:15 pm, 9:30 pm & 10:00 pm  
**JIMINY CRICKET**  
Deck 4, Balcony  
3:45 pm & 5:15 pm  
**PINOCCHIO**  
Deck 4, Balcony  
4:15 pm & 5:45 pm  
**MINNIE MOUSE**  
Preludes  
5:00 pm, 7:30 pm,  
9:15 pm & 10:15 pm  
**CHIP & DALE**  
Lobby Atrium (V)  
7:15 pm & 8:15 pm  
**PRINCESS TIANA**  
Lobby Atrium (V) - 7:45 pm  
**DONALD DUCK**  
Preludes  
8:00 pm & 9:45 pm  
**DAISY DUCK**  
Lobby Atrium (V)  
10:15 pm

(H) Hallway - (S) Starboard Side - (P) Port Side - (V) Vestibule

For details of daily Disney character appearances, refer to the character line on your Navigator Grid, or the digital character board in the Lobby Atrium.

## IMPORTANT NUMBERS

Fire/Security: 7-3001  
Medical Emergency: 7-3000  
Health Center: 7-1923

## SHIP DIRECTORY

### YOUTH ACTIVITIES

DISNEY'S OCEANEER CLUB	DECK 5, MID	9:00 AM - 12:00 AM
DISNEY'S OCEANEER LAB	DECK 5, MID	9:00 AM - 12:00 AM
EDGE	DECK 13, MID	9:00 AM - 1:00 AM
IT'S A SMALL WORLD NURSERY	DECK 5, MID	9:00 AM - 11:30 PM
VIBE	DECK 4, FWD	9:00 AM - 2:00 AM

### POOLS & MORE

\* Children under 12 must have adult supervision in pool areas.

AQUADUCK	DECK 12, MID	9:00 AM - 10:00 PM
AQUALAB	DECK 12, AFT	9:00 AM - 6:00 PM
DONALD'S POOL	DECK 11, MID	9:00 AM - 10:00 PM
MICKEY'S POOL	DECK 11, MID	9:00 AM - 10:00 PM
MICKEY'S SLIDE	DECK 11, MID	9:00 AM - 6:00 PM
NEMO'S REEF	DECK 11, MID	9:00 AM - 6:00 PM
QUIET COVE POOL (18+)	DECK 11, FWD	8:00 AM - 11:00 PM
SATELLITE FALLS (18+)	DECK 13, FWD	6:00 AM - 8:00 PM

Please note, "selfie sticks" are not permitted in the pools or on the slides.

Complimentary pool vests are available for children to use in the pools onboard. They are located on the pool deck.

### RECREATION

GOLF/SPORTS SIMULATORS	DECK 13, AFT	9:00 AM - 6:00 PM
GOOFLY GOLF	DECK 13, AFT	8:00 AM - 10:00 PM
GOOFLY'S SPORTS DECK	DECK 13, AFT	8:00 AM - 6:00 PM
MIDSHIP DETECTIVE AGENCY	DECKS 2 & 5, MID	9:00 AM - 10:00 PM
PORT ADVENTURES DESK	DECK 5, MID	9:00 AM - 5:00 PM 7:00 PM - 8:30 PM
SENSES FITNESS CENTER (18+)	DECK 11, FWD	6:00 AM - 10:00 PM

### GENERAL INFORMATION

ARR-CADE	DECK 11, AFT	24 HOURS
CONNECT@SEA	DECK 4, MID	9:00 AM - 12:00 PM 1:00 PM - 4:00 PM 7:00 PM - 10:00 PM
DISNEY VACATION CLUB	DECK 4, MID	9:00 AM - 11:00 AM 2:30 PM - 10:00 PM
DISNEY VACATION PLANNING	DECK 4, MID	10:00 AM - 8:30 PM
GUEST SERVICES	DECK 3, MID	24 HOURS
HAIR BRAIDING	DECK 11, MID	9:00 AM - 9:30 PM
MEDICAL HEALTH CENTER	DECK 1, FWD	9:30 AM - 11:00 AM 4:30 PM - 7:00 PM
PORT SHOPPING DESK	DECK 4, MID	7:30 PM - 8:30 PM
PRELUDES	DECK 3, FWD	1:30 PM - 2:30 PM 5:45 PM - 8:45 PM
SENSES SPA AND SALON	DECK 11, FWD	8:00 AM - 10:00 PM
SHUTTERS PHOTO GALLERY	DECK 4, MID	9:30 AM - 12:00 PM 7:30 PM - 11:00 PM
SHUTTERS DIGITAL	DECK 4, MID	9:30 AM - 12:00 PM 7:30 PM - 11:00 PM

### SHOPPING

BIBBIDI BOBBIDI BOUTIQUE	DECK 5, MID	9:00 AM - 9:00 PM
MICKEY'S MAINSAIL	DECK 3, FWD	9:30 AM - 11:00 PM
QUACKS	DECK 11, MID	
SEA TREASURES	DECK 3, FWD	9:30 AM - 11:00 PM
VISTA GALLERY	DECK 4, MID	9:45 AM - 10:30 PM
WHITE CAPS	DECK 3, FWD	9:30 AM - 11:00 PM
WHOZITS & WHATZITS	DECK 11, MID	10:00 AM - 11:00 AM 12:00 PM - 4:00 PM 7:30 PM - 10:00 PM

## DINNER MENU

Animator's Palate : Pacific Rim Cuisine  
Enchanted Garden : Continental Market Cuisine  
Royal Court : French Cuisine  
Dining Times: 5:45pm & 8:15pm

**DRINK OF THE DAY**  
Bahama Mama (Alcoholic)  
Coco Bali (Non-Alcoholic)

**WEATHER FORECAST**  
Today: Overcast  
High: 78 F/26 C  
Tomorrow: Partly Sunny  
High: 78 F/26 C

Evening Attire: Formal

## DINING & LOUNGES

### BREAKFAST

CABANAS CONTINENTAL	DECK 11, AFT	7:00 AM - 7:30 AM
CABANAS	DECK 11, AFT	7:30 AM - 11:30 AM
ROYAL COURT	DECK 3, MID	8:30 AM - 10:00 AM

### LUNCH

CABANAS	DECK 11, AFT	11:45 AM - 2:15 PM
FILLMORE'S FAVORITES	DECK 11, MID	11:00 AM - 6:30 PM
LUIGI'S PIZZA	DECK 11, MID	11:00 AM - 6:30 PM
PALO BRUNCH (18+) (RESERVATIONS REQ. & NOM. FEE APPLIES)	DECK 12, AFT	10:00 AM - 12:30 PM
ROYAL COURT	DECK 3, MID	12:00 PM - 1:30 PM
TOW MATER'S GRILL	DECK 11, MID	11:00 AM - 11:00 PM

### DINNER

ANIMATOR'S PALATE	DECK 3, AFT	5:45 PM & 8:15 PM
ENCHANTED GARDEN	DECK 2, MID	5:45 PM & 8:15 PM
ROYAL COURT	DECK 3, MID	5:45 PM & 8:15 PM
CABANAS TABLE SERVICE	DECK 11, AFT	
PALO (18+) (RESERVATIONS REQ. & NOM. FEE APPLIES)	DECK 12, AFT	6:00 PM - 8:30 PM
REMY (18+) (RESERVATIONS REQ. & NOM. FEE APPLIES)	DECK 12, AFT	6:00 PM - 8:30 PM

### LATE NIGHT SNACKS

LA PIAZZA (18+)	DECK 4, AFT	10:45 PM - 11:45 PM
LUIGI'S PIZZA	DECK 11, MID	9:30 PM - 12:00 AM

### ADDED FEATURES

BEVERAGE STATION	DECK 11, MID	24 HOURS
EYE SCREAM	DECK 11, MID	11:00 AM - 11:00 PM
ROOM SERVICE	DIAL 0	24 HOURS

### ENTERTAINMENT - LOUNGES - BARS

Adults must be 21 and older to consume alcoholic beverages.

BON VOYAGE	DECK 3, MID	8:00 AM - 11:00 PM
COVE BAR (18+)	DECK 11, FWD	10:00 AM - 10:00 PM
COVE CAFE (18+)	DECK 11, FWD	6:30 AM - 12:00 AM
CURRENTS (18+)	DECK 13, FWD	10:00 AM - 11:00 PM
D LOUNGE	DECK 4, MID	SHOWTIMES
FROZONE TREATS	DECK 11, MID	10:00 AM - 6:00 PM
LA PIAZZA (18+ AFTER 9:00 P.M.)	DECK 4, AFT	12:00 PM - 12:00 AM
MERIDIAN (18+)	DECK 12, AFT	10:00 AM - 12:00 PM 5:00 PM - 12:00 AM
O'GILLS PUB (18+ AFTER 9:00 P.M.)	DECK 4, AFT	12:00 PM - 12:00 AM
OOH LA LA (18+)	DECK 4, AFT	5:30 PM - 12:00 AM
OUTLOOK	DECK 14, MID	
SKYLINE (18+)	DECK 4, AFT	5:30 PM - 12:30 AM
THE TUBE (18+ AFTER 9:00 P.M.)	DECK 4, AFT	7:00 PM - 8:30 PM 9:30 PM - 2:00 AM
VISTA CAFE	DECK 4, MID	7:00 AM - 11:00 PM
WAVES	DECK 12, AFT	10:00 AM - 6:00 PM

Public Health Advisory: Consuming raw or under-cooked meats, poultry, seafood, shellfish, or eggs may increase your risk for food borne illness, especially if you have certain medical condition.



## GOOFLY'S SPORTS Digital Simulators

### Sports Simulator

(Basketball, Baseball, Hockey, Football or Soccer)\$13 / half hr, \$22 / hr

### Golf Simulator

\$28 / half hr, \$49 / hr

Reservations can be made at the Port Adventures Desk, Deck 5, Midship or at the Simulators, Deck 13, Aft.