

# VOYAGE NAVIGATOR

MONDAY  
SEPTEMBER 24, 2018

TO

FRIDAY  
SEPTEMBER 28, 2018

## CRUISE HIGHLIGHTS

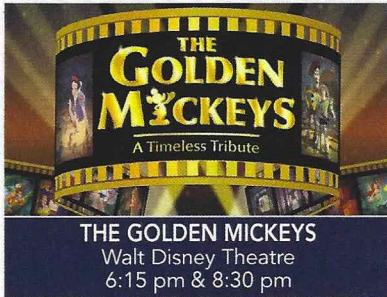
### MONDAY

PORT CANAVERAL

Port Departure: 5:00 pm

All Aboard: 3:45 pm

Attire: Cruise Casual



**THE GOLDEN MICKEYS**  
Walt Disney Theatre  
6:15 pm & 8:30 pm

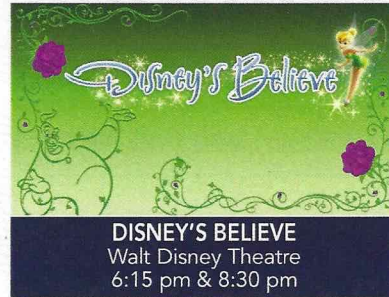
### TUESDAY

NASSAU

All Ashore: 9:30 am

All Aboard: 5:15 pm

Attire: Halloween or Cruise Casual



**DISNEY'S BELIEVE**  
Walt Disney Theatre  
6:15 pm & 8:30 pm

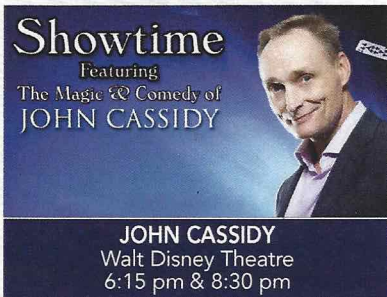
### WEDNESDAY

DISNEY CASTAWAY CAY

All Ashore: 8:30 am

All Aboard: 4:45 pm

Attire: Pirate or Cruise Casual

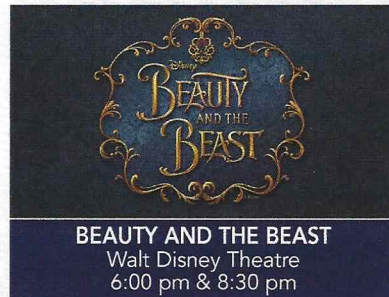


**JOHN CASSIDY**  
Walt Disney Theatre  
6:15 pm & 8:30 pm

### THURSDAY

DAY AT SEA

Attire: Optional Dressup



**BEAUTY AND THE BEAST**  
Walt Disney Theatre  
6:00 pm & 8:30 pm

Subject to change.

## WELCOME ABOARD!

### YOUR STATEROOM & LUGGAGE

Staterooms will be ready at 1:30 pm. To allow your Stateroom Host/ess time to prepare your room, please do not remove the blue stanchion straps. Stateroom hosts will deliver luggage throughout the day until 6:00 pm.

### STATEROOMS WITH BUNK BEDS

Bunk beds are recessed into the ceiling and will be prepared during evening turndown service by your Stateroom Host/ess.

### STATEROOM SAFE

Each stateroom is equipped with a secured storage safe. Instructions for use are located on the safe.

### TO CHANGE DINING ASSIGNMENT

Requests for different seating times will be taken today:

1:00 pm - 3:30 pm; Book in Enchanted Garden, Deck 2 Mid

3:30 pm - 5:00 pm; please dial 7-1831, 7-1832, or 7-1833

### REMY & PALO DINING RESERVATIONS

Reservations are required and will be taken on a first come basis today:

1:00 pm - 3:30 pm; Enchanted Garden, Deck 2 Mid

Please dial 7-9734 for Remy or 7-9735 for Palo for more information. Cover charge applicable.

**Adult Exclusive Dining Opportunity!** Guests are invited to make 2 dinner reservations at our two adult-exclusive restaurants, Palo & Remy. This includes one reservation on embarkation evening and one more on another night of the cruise. Reservations are subject to availability and a specialty dining charge will apply.

### DINNER

6:45 pm - First seating 8:15 pm - Second seating

Please check your Key To The World Card for details of your dining rotation, and bring them to your specific dining location. There is no need to wait in line prior to dinner. Dining Rooms open at designated seating times and your table is reserved each night of your cruise.

A = Animator's Palate, Deck 3, Aft E = Enchanted Garden, Deck 2, Midship R = Royal Palace, Deck 3, Midship



### THE LEGEND OF THE PUMPKIN TREE

Twice a long time ago...

Before the time of now, there was Halloween.

Not the Halloween of today, filled with merriment and pranks, but a darker celebration.

The night was filled with mystery.

The moon seemed to shine a little bit brighter,

and in every shadow lurked something unimaginable.

This was the time of the Pumpkin King.

But as the years grew on, the Pumpkin King grew weary.

He needed someone to help him keep the history of his favorite, most beloved holiday.

So he reached into his head and retrieved four pumpkin seeds,

each one representing a different characteristic of his wicked personality.

He planted them around and watched as the seeds grew

into beautifully morbid trees. The tree blooms only once

a year.

Deep within its dark, gnarled branches

hold the the remnant spirits of Halloween memories gone past.

According to the legend, once everyone has learned

the who, the what and the why, the spirit of the Pumpkin

King will bring the tree to life.

This name of their Pumpkin Tree here onboard the Disney

Dream is named "Grim".



Create the most memorable experiences during your Disney Cruise Line vacation with Port Adventures! Our Port Adventures are designed for you to see the best our ports have to offer. Stop by the Port Adventures Desk, Deck 5, Midship where our friendly team will be happy to assist you plan your adventure!

There is an adventure for everyone on your Disney Dream® vacation.

IMPORTANT NUMBERS Fire/Security: 7-3001 Medical Emergency: 7-3000 Health Center: 7-1927

# ADULT ACTIVITY HIGHLIGHTS



**1820 SOCIETY (GUESTS 18-20 YEARS ONLY)**  
1820 Society is an exclusive option for young adult guests. Come meet fellow passengers and learn about the excellent activities that the Dream offers to create the perfect cruise experience.



**80'S MUSIC CHALLENGE**  
"Moon Walk" back to the 80's as we put your musical knowledge of the decade to the test.



**DISNEY VACATION CLUB GROUP PREVIEW**  
Join us for our interactive group presentation to learn about taking magical vacations year after year! For more information, please see a Disney Vacation Club Cast Member on Deck 4, Midship, or call 7-2805 from your stateroom phone.

## CRUISIN' SOLO GATHERING

Single, single parent or just traveling alone? Join your Cruise Staff for an informal gathering.



**KRAZY KARAOKE**  
Take to the stage, grab a microphone and sing your favorite tunes with your Club Host and DJ.



**MAKING OF THE DREAM**  
Explore the origins of Disney Cruise Line and the latest and greatest innovations conjured especially for the Disney Dream in this fascinating and entertaining behind-the-scenes program.



**MATCH YOUR MATE**  
It's time to play everyone's favorite couples game show, Match Your Mate!



*Senses Spa & Salon has a variety of seminars and fitness classes available throughout the cruise. Pamper yourself with therapeutic spa treatments of heat, steam, rain and water in luxurious and tranquil private rooms. Deck 11, Forward.*

## BEVERAGE SEMINARS

Your Beverage team has a host of tastings and seminars to entertain and educate you. Stop by Guest Services Deck 3, Midship to pre-book these experiences. (nominal fee applies).

Whiskey Tasting - Stem to Stern Wine Tasting - Martini Tasting  
Cognac Tasting - Tequila & Margarita Tasting - Mixology

## COSTUME INFORMATION

All Guests are encouraged to dress up in their own costumes for special Halloween on the High Seas voyages, Star Wars Day at Sea celebrations and Pirate Night; however, the following guidelines should be followed when selecting a costume:

- Masks that completely cover a person's face may only be worn when standing still at character photo locations and must be carried when moving around the ship.
- Guests should choose costumes that are family friendly, not obstructive, objectionable, offensive nor violent.
- Guests may dress as their favorite character, but may not pose for pictures or sign autographs.
- To avoid any disappointment or delay in the boarding process, Guests should refrain from bringing toys or props that resemble guns, knives or other related implements, as these items will not be allowed onboard.
- Masks are strictly prohibited during the boarding process as identity must be verified.
- Guests failing to comply with costume guidelines onboard may be removed from events unless their costume can be modified.

# FUN FOR ALL AGES HIGHLIGHTS



**A PIRATES LIFE FOR ME**  
Calling all Pirates, we be! If ye have an adventurous spirit or pirate savvy, come spin the "Wheel of Destiny" for a treasure trove of fun be ripe for the takin' in this action-packed pirate game show.



**BUCCANEER BLAST FIREWORKS**  
What's a pirate party without some fireworks to remind the other ships who be ruling the oceans blue? (Weather Permitted)



**CASTAWAY CAY 5K (10+)**  
Sign up today for the Castaway Cay 5K! Please visit the Port Adventures Desk or the Guest Services Desk to register anytime prior to our arrival at Disney Castaway Cay. Please note that runners must be 10 years of age or older to participate.



**DISNEY JUNIOR PIRATE & PRINCESS DANCE PARTY**  
Calling all Pirates and Princesses! Come join us for a fun dance party featuring music and fun activities from Jake and the Neverland Pirates and Sofia the First. Whether you favor tiaras or treasure chests, there's something for you at our Disney Junior Pirate & Princess Dance Party!



**FAMILY FUSION**  
Bring the entire family and test your Disney knowledge in the high-tech interactive game show, Family Fusion.



**HAUNTED STORIES OF THE SEA**  
The Halloween tradition of telling ghostly tales; featuring frightening visuals, creepy sounds and spooky effects, Sea Captain will share stories of the strange, the bizarre and the just plain scary that will leave even the bravest of souls with a chill.



**JACKPOT BINGO**  
CASH prizes and raffle prizes to be won in our family friendly Bingo sessions with your Cruise Staff. Those under the age of 18 must be accompanied by an adult to play.



**MICKEY'S MOUSEQUERADE PARTY**  
Enjoy a fun trick or treat "Mouse-Querade" featuring music, games, and of course treats. And expect a visit from some of your favorite Disney Pals who arrive just in time for the party, dressed in their Halloween costumes.



**MICKEY'S PIRATES IN THE CARIBBEAN**  
It's a Pirate Celebration, me hearties! Come experience all the pirate fun alongside Captain Mickey Mouse and his famous pirate crew. Play, dance and acquire all the pirate skills needed to become an official member of Mickey's Pirate Crew! (Weather Permitting)



**THE PUMPKIN TREE**  
Join us in the Lobby Atrium for some frightening fun, and celebrate Halloween with a spooky ceremony that will have you screaming with ghoulish delight.



**MIRROR MIRROR**  
Join the Magic Mirror in the fairest game show of them all, Mirror, Mirror. There's trivia, singing and even a relay race. Hi Ho, Hi Ho, it's off to play we go



**SO YOU THINK YOU KNOW YOUR FAMILY?**  
This fun-filled family game show is always full of surprises. Find out how well you know, or don't know your family.



**TIM BURTON'S THE NIGHTMARE BEFORE CHRISTMAS SING AND SCREAM**  
You're invited to a special presentation of Tim Burton's popular classic, presented in 3-D. Featuring state-of-the-art projection, sound and in-theatre effects, you become part of the experience. You never know who may show up.

# YOUTH ACTIVITIES INFO & HIGHLIGHTS



## Dine & Play

A convenience for families dining at 8:15 pm, our Youth Activities counselors will be available at 9:15 pm at the entrance of Royal Palace, Enchanted Garden and Animator's Palate dining rooms to bring registered children to join the fun in the Youth Activities areas.

## Pre-School Fun

Disney's Oceaneer Club is reserved for only those between 3-5 years of age. This is a time for them to become acclimated to Disney's Oceaneer Club, make new friends and join in on a lot of fun-filled programs and activities. Please note after Pre-School Fun has concluded, Disney's Oceaneer Club will be open for Secured Programming for ages 3-12.

## Youth Activities Open House

Open House is an opportunity for all to come and participate in a variety of exciting activities and free time in the Oceaneer Club, Oceaneer Lab, Edge and Vibe throughout the cruise. During these times secured programming will still be offered in the other venue for those looking to check their children into care.

## Youth Activities Venue Tour

Come and take a tour of Disney's Oceaneer Club and Disney's Oceaneer Lab. This informative tour will give you the information you need to know about our exciting spaces and activities offered for children ages 3-12. Please see your Personal Navigator or the Navigator App for times.



3 - 12 years old

## MICKEY'S PUZZLE PLAYTIME

Come and play with Mickey & friends as they share their favorite games, puzzles and dances!

## TOY STORY BOOT CAMP

Join Corporal Green in our own version of boot camp as we learn how to have fun - The Toy Story way!

## JEDI TRAINING: EXPERIENCE THE FORCE

Become one with the Force as you take your first step into a larger world.



3 - 12 years old

## SUPER SLOPPY SCIENCE

Join Professor Make-O-Mess in some of the most extreme experiments you will ever see in the world of Super Sloppy Science!

## PISTON CUP

It's Dinoco time and you're part of the pit crew! Design your own race car and see if you've got what it takes to end up in the winner's circle!

## GET THE HOOK

A villainous villain has stolen Captain Hook's prized golden hook. Become a member of the Top Deck Detective Agency and help solve the clues to retrieve Hook's hook.

## STITCH'S ADVENTURE SQUAD

Stitch, everyone's favorite alien, is making an appearance to share some of his mischievous games and activities.



11 - 14 years old

## HEROES VS. VILLAINS

Join your favorite hero or villain team on a series of activities that will take place throughout the cruise.

## THAT'S HILARIOUS

Ever wanted to show off your comedy skills? Then be a part of the cast for the crazy improv show "That's Hilarious" and put on a live show for your friends.



14 - 17 years old

## THE DOWNLOAD

Come up to Vibe and help plan all the fun activities you will be doing this cruise with your new friends!

## GOTCHA

You will try to eliminate your victim by various methods collecting points throughout the day, last person standing with the most points wins.

# BUENA VISTA THEATRE

Deck 4 & 5, Midship

## FEATURE MOVIES THIS VOYAGE

### MONDAY - PORT CANAVERAL, FLORIDA

5:30 pm PG Christopher Robin  
8:15 pm PG Christopher Robin  
10:45 pm PG The Incredibles 2

Open Captioning

### TUESDAY - NASSAU, BAHAMAS

11:30 am PG Christopher Robin  
2:15 pm PG-13 Ant-Man and the Wasp  
5:15 pm PG The Incredibles 2  
8:15 pm PG The Incredibles 2  
11:00 pm PG-13 Ant-Man and the Wasp

Open Captioning

3D

### WEDNESDAY - DISNEY CASTAWAY CAY

8:30 am PG Family Movie Fun Time: Christopher Robin  
11:15 am PG The Incredibles 2  
2:15 pm PG Christopher Robin  
5:15 pm PG-13 Ant-Man and The Wasp  
8:15 pm PG-13 Ant-Man and The Wasp  
11:00 pm PG The Incredibles 2

Open Captioning

3D

### THURSDAY - DAY AT SEA

8:30 am PG Family Movie Fun Time: The Incredibles 2  
11:30 am PG Christopher Robin  
2:00 pm PG-13 Ant-Man and The Wasp  
5:15 pm PG The Incredibles 2  
8:15 pm PG The Incredibles 2  
10:45 pm PG Christopher Robin

Open Captioning

3D

Subject to change.

## FEATURED VARIETY ACT THIS VOYAGE



### COMEDY AND MAGIC WITH JOHN CASSIDY

John Cassidy is a professional comedian, magician, and balloon artist who holds several Guinness World Records® for balloon sculpting speed. His records include Most Balloon Sculptures Completed in One Hour and Most Balloon Sculptures completed in One Minute.

Though known for his Guinness World Records®, he is sought after for his stage show which he has presented across the US and internationally, performing for family, corporate and collegiate audiences.



# MORE TO ENJOY ONBOARD



## NEW FALL 2019 ITINERARIES

New Fall 2019 Itineraries announced! Set sail for spectacular ports including Bermuda and Quebec City, Canada. Disney Cruise Line will continue sailing to sun-soaked destinations on Bahamian, Caribbean and Baja cruises! Visit the Disney Vacation Planning Center, Deck 4, Midship for more information. Disney Vacation Planning tends to get busy on the last day of sailing. Don't miss the opportunity to plan your next Disney vacation.



## DISNEY VACATION CLUB® MEMBER CELEBRATION

Join us as we welcome you onboard with a fun, interactive event where you can catch the latest updates at Disney Vacation Club! Please see a Disney Vacation Club Cast Member on Deck 4, Midship or call 7-2805 from your stateroom phone for more information.

## PORT SHOPPING INFORMATION

Join your Port Shopping Guide Gemma today at 2:45 pm in the Buena Vista Theatre to learn about the incredible shopping ashore in Nassau! Over \$1,000 in give-a-ways and prizes! Arrive early for free gifts and more! Collect your free ship charm from the Port Shopping Desk, Deck 4, Midship, today from 6:00 pm - 8:00 pm.



## Connect@Sea

### FREE INTERNET EMBARKATION DAY SPECIAL

Sign up for a free 50 MB Internet package today and enjoy it throughout the cruise! This offer is only available from noon to midnight on the day your cruise begins. On your wireless device, simply find the "DCL-Guest" Wi-Fi Network, go to [www.dclguest.com](http://www.dclguest.com) to create an account, and get your free 50 MB of data to start sharing your memories even before you leave port! If you have any questions, ask our Connect@Sea Expert located at Deck 4, Midship. No purchase necessary. The free 50 MB package can only be used for the duration of the cruise. Only one free package per stateroom, but everyone can share it. Unused data from a package will not be reimbursed and it is non-transferable between voyages or ships.

### RELIGIOUS SERVICES

Groups who need a location to practice their faith may contact Guest Services for availability information.

### FREE ON DEMAND TV

Watch Disney movies, Hollywood features, ABC shows, and even captioned content, plus much more "On Demand" for FREE in the comfort of your stateroom! Bookmark your movie and come back to watch it later. Press MENU on your stateroom television remote control and follow the prompts.

## SENSES SPA & SALON



**DECK 11, FORWARD**  
Extension 7-1465

### RAINFOREST

Come enjoy our serenity lounge, with heated chairs, dry sauna, aromatherapy steam rooms and rainfall, misting showers.

\$144 for couples, \$99 for singles.

### IONITHERME

Would you like to lose 3-8 inches? Speed up your metabolism, reduce fluid retention and the appearance of cellulite? Firm your muscle tone? If so, this is the best treatment for you! \$155/session

### ONBOARD ACUPUNCTURE

Naturally effective for pain, arthritis, sea sickness, stress, digestion, weight loss, and much more.

\$150/session or \$360/3 sessions.

### THE PERFECT DAY

The Perfect Day: 50 minute full body massage, Foot & Ankle Massage, Scalp Massage & Hydrating Facial.  
75 minute treatment - \$169.

### REJUVENATION SPA CONSULTATIONS

Ready to enhance your natural beauty? Book your free Facial Rejuvenation consultation with our Rejuvenation Doctor at the Senses Spa.

**AN 18% AUTO GRATUITY IS ADDED TO ALL SENSES SPA SERVICES.**

## MERCHANDISE SHOPPING



**DECK 3, FORWARD**

### TIFFANY & CO. POP-UP STORE

Tiffany & Co - Now Sailing on the Disney Dream!  
The Tiffany & Co. Pop-Up Shop will include Tiffany's iconic collection and—for the first time on the Disney Dream—you'll be able to purchase exclusive Disney Cruise Line-themed jewelry. Visit White Caps on Deck 3, Forward today!

### STYLISH WATCHES ONBOARD

Whether you need a tool for timekeeping or a fun fashion accessory, visit White Caps and browse a wide selection of stylish watches available. Popular brands include Breitling and Hublot. Deck 3, Forward

### THE DISNEY PARKS COLLECTION BY PANDORA JEWELRY

The Disney Parks Collection by PANDORA Jewelry features hand-finished .925 sterling silver and 14K gold charms inspired by some of Disney's most beloved characters. Visit White Caps on Deck 3, Forward, where you'll find a specially designed sterling silver charm featuring a Disney Cruise Line ship.

## SHUTTERS PHOTO GALLERY



**DECK 4, MIDSHIP**

### OUR CRUISE PHOTOS

View our embarkation photos starting at 7:00pm at Shutters, Deck 4, Midship and enter our raffle for a chance to win a 10 Digital Images Photo USB worth \$149.95. Raffle entries are accepted until 10:30 pm tonight.

\*Terms and conditions apply.

Visit Shutters on Deck 4, Midship for all your photographic needs, from digital cameras, batteries, binoculars and accessories.

Ask a friendly photographer about Our Cruise Photos at the incredible value of an unlimited digital photo package which includes all of your stateroom's photos.

### PROFESSIONAL PORTRAITS

Professional portraits will be available during your cruise in the Lobby Atrium, Deck 3, Midship. Please refer to your daily personal Navigator for available hours.

### PHOTO BOOK

Visit Shutters today and turn your magical vacation memories into an impressive keepsake, a personal one-of-a-kind Photo Book. Fill every page with memories of your cruise vacation.

**PHOTOS ARE AVAILABLE FOR VIEWING ON INTERACTIVE PHOTO KIOSKS APPROXIMATELY FIVE HOURS AFTER BEING TAKEN AND ARE AVAILABLE FOR PURCHASE DURING THIS CRUISE.**

## IMPORTANT INFORMATION

**Security Notice/ Unaccompanied Minor Ashore**  
All Guests (including children) who wish to disembark or embark the ship are required to present their Key to the World card at the gangway. A photo ID is also required for those Guests who are 18 years of age or older. Guests under the age of 18 are required to have a Parent, Guardian or other responsible adult complete the "Traveling with Minors" section of "My Online Check-In" prior to sailing or sign an authorization form at the Guest Services Desk if they wish to go ashore unaccompanied or with any adult from another stateroom.

**Inclement Weather**  
For the safety of all Guests, outdoor events may be changed due to unforeseen weather conditions.

**Insect Repellent Advisory**  
The Centers for Disease Control and Prevention recommends wearing long-sleeved shirts and pants along with insect repellent to protect against mosquito bites and related illnesses when going ashore. Complimentary insect repellent is available on the pier as you exit the ship. Insect repellent is also available for purchase in White Caps. When using both sunscreen and insect repellent, use sunscreen first and apply insect repellent on top of sunscreen.

**Corridor Quiet Hours**  
As a courtesy to all our Guests, please recognize quiet hallway hours from 10:00 pm til 8:00 am.

**No Reserved Seats Policy**  
As a courtesy to all our Guests, we kindly advise that the saving of seats is not permitted in the Walt Disney Theatre, and the saving of the sun loungers is not permitted on Deck 11, 12, and 13. Items left unattended will be returned to lost and found at Guest Services, Deck 3 Midship.

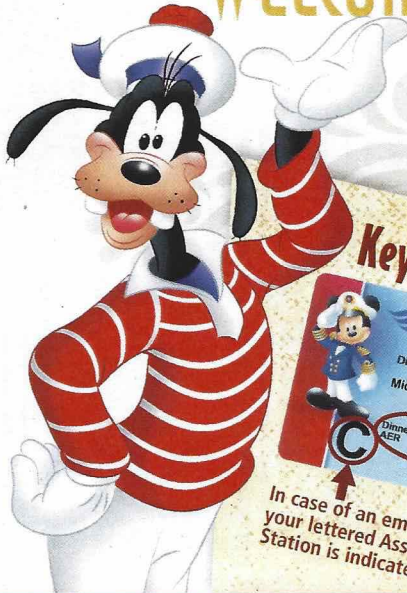
**Cold and Flu Reminder**  
Please wash hands frequently and thoroughly, particularly before meals. Contact the Health Center by dialing 7-1927, should anyone in your party become ill.

**Smoking**  
For the comfort of our Guests, the following areas are designated as smoking areas:  
\*Deck 13, forward, port side by Currents  
\*Deck 12, aft, port side outdoor area that is accessible through the Meridian Lounge  
\*Deck 4, aft, port side from 6:00 pm to 6:00 am only (all of Deck 4 is non-smoking from 6:00 am to 6:00 pm)  
Smoking is prohibited inside all Guest staterooms and on stateroom verandahs. Guests found smoking in their staterooms or on their verandahs will be charged a \$250 stateroom recovery fee. Electronic cigarettes may only be used in designated smoking areas.

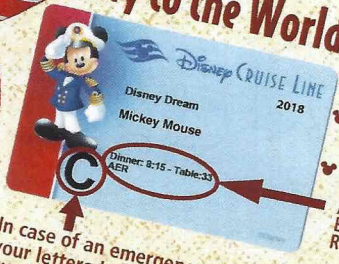
**Walt Disney Theatre**  
Theatrical performances may use artificial fire, strobe lights, pyrotechnics and other special effects. For the safety of our performers and the comfort of those around you, the use of any photography, video recording device or any electronic equipment is prohibited.

**Verandah Safety**  
Please do not leave any personal items on your verandah that may be blown overboard or present a fire hazard if left unattended. Do not throw anything over the ship's side. Guests should not sit, lean or climb on the railing or leave children unattended on the verandah. Do not open the verandah and stateroom doors simultaneously as this may create a wind effect and could cause the doors to slam unexpectedly.

# WELCOME ABOARD!



## Key to the World Card Information



In case of an emergency, your lettered Assembly Station is indicated here.

- ♥ Dinner seatings are 5:45 pm or 8:15 pm.
- ♥ Your table number for the cruise is located after your dinner seating.
- ♥ Dinner locations and rotation are indicated by letters under your dinner time.
  - A - Animator's Palate, Deck 3, Aft
  - E - Enchanted Garden, Deck 2, Midship
  - R - Royal Palace, Deck 3, Midship

# SAILING AWAY

It's time to go Sailing Away! Join Mickey and Minnie and the rest of the gang as they welcome you aboard the Disney Dream.

**Deck Stage, Deck 11, Midship, 4:30 pm**

Afternoon	1:45	2:00	2:15	2:30	2:45	3:00	3:15	3:30	3:45	4:00	4:15	4:30	4:45	5:00	5:15	5:30	5:45	6:00	6:15	6:30	6:45			
FUNNEL VISION	Frozen (PG)  Open Captioning Funnel Vision							<b>Mandatory Guest Assembly Drill 4:00 pm</b>  All ship services will be suspended during this time.  Please refer to the posted drill instructions prior to heading to your Assembly Station.  You will not need your life jacket for the Guest Assembly Drill.   Your Assembly Station is indicated on your Key To The World card.					Sailing Away Funnel Vision		Tangled (PG)  Open Captioning Funnel Vision									
BUENA VISTA THEATRE					Port Shopping Talk Buena Vista Theatre										Christopher Robin (PG) Duration: 1 Hour 44 Minutes									
CHARACTERS																								
FUN FOR ALL AGES	Walking Ship Tour Preludes				 Disney's Celebration D Lounge						 Deck 11 Stage		Mickey Mouse Balcony		Minnie Lobby Atrium (H)		Goofy Lobby Atrium (V)		Soft Pop with Summer Breeze Lobby Atrium		Red Carpet Arrivals   A Timeless Tribute Walt Disney Theatre			
ADULTS	Acupuncture Demonstration Senses Fitness Center				Port Shopping Talk Buena Vista Theatre				Spa Raffle Senses Fitness		Youth Activities Open House		Sunshine Trio Unplugged District Lounge		Cruisin Solo Cove Cafe									
VIBE 14-17 YEARS OLD	Youth Activities Open House												Open for Teens		Video Game Challenge									
EDGE 11-14 YEARS OLD	Youth Activities Open House												Open for Tweens		Foosball									
OCEANEER LAB 3-12 YEARS OLD	Game Challenge		Youth Activities Open House		Magic PlayFloor						Bingo		GAGA Ball		Meet Your Counselors		Ice Breakers							
OCEANEER CLUB 3-12 YEARS OLD	Magic PlayFloor		Dance Party		Venue Tour		Open House				Youth Activities Open House				Memory Wall		Star Wars							



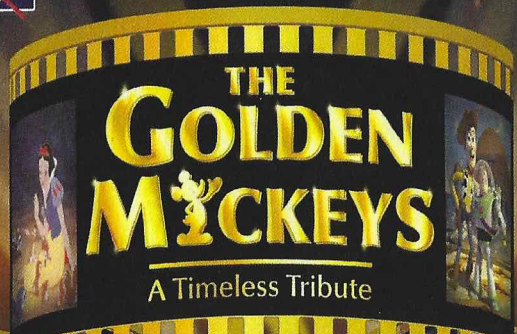
Evening	7:00	7:15	7:30	7:45	8:00	8:15	8:30	8:45	9:00	9:15	9:30	9:45	10:00	10:15	10:30	10:45	11:00	11:15	11:30	11:45	12:00			
FUNNEL VISION	Lilo & Stitch (PG)  Open Captioning Funnel Vision							NFL Football: Pittsburgh Steelers vs Tampa Bay Buccaneers Funnel Vision (Subject to Satellite Reception & Availability)																
BUENA VISTA THEATRE						Christopher Robin (PG) Duration: 1 Hour 44 Minutes										The Incredibles 2 (PG)  Open Captioning Duration: 1 Hour 58 Minutes								
CHARACTERS			Mickey Mouse Balcony						Cinderella Lobby Atrium (V)		Mickey Mouse Balcony		Minnie Lobby Atrium (H)						Goofy Lobby Atrium (H)		Rapunzel Lobby Atrium (V)			
FUN FOR ALL AGES	Family Dance Party Lobby Atrium		 D Lounge		Red Carpet Arrivals   A Timeless Tribute Walt Disney Theatre				 D Lounge		 Sing and Scream Walt Disney Theatre Rating: (PG) Duration: 1 H 16 Min		Pop Hits with Summer Breeze Lobby Atrium		Family Fusion D Lounge		Family Karaoke D Lounge							
ADULTS	Bingo Pre-Sales Evolution		Free Card \$500 Big X Jackpot BINGO Evolution						NFL Football Pittsburgh Steelers vs Tampa Bay Buccaneers Pub 687 (Subject to Satellite Reception & Availability)		Music of 70's & 80's District Lounge		1420 Society: Stir It, Blend It, Taste It Cove Cafe		Cruise Staff DJ Evolution		Snippets Evolution		 Evolution		Silent DJ Party Evolution		Cruise Staff DJ: Going Underground District Lounge	
VIBE 14-17 YEARS OLD			Foosball		Game Challenge		GAGA Ball		Ice Breakers		The Download		Heroes and Villains											
EDGE 11-14 YEARS OLD	Video Game Challenge		Foosball Tournament		Game Challenge		Profiles		Taking it to the Edge		Ice Breakers		Dodgeball											
OCEANEER LAB 3-12 YEARS OLD	Game Challenge		Get the Hook		Disney Animation: Creating a Character		Pluto's Pajama Party		Magic PlayFloor		4 Square Competition													
OCEANEER CLUB 3-12 YEARS OLD	Aloha Luau		Magic PlayFloor		Toy Story Boot Camp		Game Challenge		Disney Infinity Challenge		Star Wars Galaxy Designers													

Bahama Mama (Alcoholic)  
Passion Cream Freeze (Non-Alcoholic)

DRINK OF THE DAY

YOUTH ACTIVITIES OPEN HOUSE  
A non-secured program with activities for families.





**WALT DISNEY THEATRE**  
DECK 3 & 4, FORWARD  
6:15 pm & 8:30 pm

As a courtesy to all Guests, we kindly advise that the saving of seats is not permitted in the Walt Disney Theatre.

Assistance available at the entrance to the Walt Disney Theatre 30 minutes prior to show time.

**Character Meet and Greet Ticket Distribution**

Port Adventures Desk, Deck 5, Midship - 11:45 am - 2:00 pm  
For Guests who did not reserve Meet and Greets online, a limited number of tickets are available today to meet some of your favorite Disney friends.

- Princess Gathering
- Frozen Meet and Greet

Tickets are required for each of these Meet and Greets.

Space is limited.

**Character Appearances**

**SAILING AWAY**

Deck 11 Stage - 4:30 pm

**MICKEY MOUSE**

Balcony  
5:15 pm, 7:45 pm & 9:30 pm

**MINNIE MOUSE**

Lobby Atrium (H)  
5:30 pm, 8:00 pm & 10:00 pm

**GOOFY**

Lobby Atrium (V) - 5:45 pm  
Lobby Atrium (H) - 9:30 pm

**PRINCESS TIANA**

Lobby Atrium (V) - 7:45 pm

**CINDERELLA**

Lobby Atrium (V) - 9:15 pm

**RAPUNZEL**

Lobby Atrium (V) - 10:00 pm



(H) Hallway - (S) Starboard Side - (P) Port Side - (V) Vestibule

For details of daily Disney character appearances, refer to the character line on your Navigator Grid, or the digital character board in the Lobby Atrium.

**SHIP DIRECTORY**

**YOUTH ACTIVITIES**

DISNEY'S OCEANEER CLUB	DECK 5, MID	12:00 PM - 3:30 PM 4:30 PM - 12:00 AM
DISNEY'S OCEANEER LAB	DECK 5, MID	12:00 PM - 3:30 PM 4:30 PM - 12:00 AM
EDGE	DECK 13, MID	12:00 PM - 3:30 PM 4:30 PM - 1:00 AM
IT'S A SMALL WORLD NURSERY	DECK 5, MID	12:00 PM - 3:30 PM 4:30 PM - 12:00 AM
VIBE	DECK 4, FWD	12:00 PM - 3:30 PM 4:30 PM - 1:00 AM

**POOLS & MORE**

\* Children under 12 must have adult supervision in pool areas.

AQUADUCK	DECK 12, AFT	12:00 PM - 3:00 PM 4:30 PM - 10:00 PM
DONALD'S POOL	DECK 11, MID	12:00 PM - 3:15 PM 6:00 PM - 10:00 PM
FUNNEL PUDDLE	DECK 12, FWD	12:00 PM - 6:00 PM
MICKEY'S POOL	DECK 11, MID	12:00 PM - 3:15 PM 4:30 PM - 10:00 PM
MICKEY'S SLIDE	DECK 11, MID	12:00 PM - 3:15 PM 4:30 PM - 6:00 PM
NEMO'S REEF	DECK 11, MID	12:00 PM - 3:15 PM 4:30 PM - 6:00 PM
QUIET COVE POOL (18+)	DECK 11, FWD	12:00 PM - 11:00 PM
SATELLITE FALLS (18+)	DECK 13, FWD	12:00 PM - 8:00 PM

Please note, "selfie sticks" are not permitted in any aquatic area.

Complimentary pool vests are available for children to use in the pools onboard. Located on the pool deck.

**RECREATION**

GOLF/SPORTS SIMULATOR	DECK 13, AFT	12:00 PM - 3:15 PM 4:30 PM - 6:00 PM
GOOFY GOLF	DECK 13, AFT	5:30 PM - 10:00 PM
GOOFY'S SPORTS DECK	DECK 13, AFT	12:00 PM - 6:00 PM
MIDSHIP DETECTIVE AGENCY	DECK 2 & 5, MID	11:00 AM - 11:00 PM
PORT ADVENTURES DESK	DECK 5, MID	12:00 PM - 3:30 PM 4:30 PM - 10:00 PM
SENSES FITNESS CENTER (18+)	DECK 11, FWD	12:00 PM - 10:00 PM

**GENERAL INFORMATION**

BUENA VISTA THEATRE	DECK 4 & 5, MID	SHOWTIMES
CONNECT@SEA DESK	DECK 4, MID	1:00 PM - 3:30 PM 7:00 PM - 10:00 PM
DISNEY VACATION CLUB	DECK 4, MID	5:30 PM - 10:00 PM
DISNEY VACATION PLANNING	DECK 4, MID	5:00 PM - 10:00 PM
GUEST SERVICES	DECK 3, MID	24 HOURS
HAIRBRAIDING	DECK 11, MID	5:00 PM - 10:00 PM
MEDICAL HEALTH CENTER	DECK 1, FWD	4:30 PM - 7:00 PM
PORT SHOPPING DESK	DECK 4, MID	6:00 PM - 8:00 PM
PRELUDES	DECK 3, FWD	5:45 PM - 9:00 PM
SENSES SPA AND SALON	DECK 11, FWD	12:00 PM - 10:00 PM
SHUTTERS PHOTO GALLERY	DECK 4, MID	7:00 PM - 10:30 PM
WALT DISNEY THEATRE	DECK 3 & 4, FWD	SHOWTIMES

**SHOPPING**

BIBBIDI BOBBIDI BOUTIQUE	DECK 5, MID	12:00 PM - 3:00 PM 5:00 PM - 9:00 PM
MICKEY'S MAINSAIL	DECK 3, FWD	5:45 PM - 11:00 PM
SEA TREASURES	DECK 3, FWD	5:45 PM - 11:00 PM
VISTA GALLERY	DECK 4, MID	5:45 PM - 11:00 PM
WHITE CAPS	DECK 3, FWD	5:45 PM - 11:00 PM
WHOZITS & WHATZITS	DECK 11, MID	12:00 PM - 3:15 PM 4:30 PM - 6:00 PM 9:00 PM - 11:00 PM

DUE TO PORT REGULATIONS, WHEN THE SHIP IS DOCKED,

**EVENING ATTIRE**

Cruise Casual

**WEATHER FORECAST**

Today: Partly Cloudy  
High: 90°F/32°C

**DINING & LOUNGES**

**LUNCH**

CABANAS	DECK 11, AFT	11:45 AM - 3:00 PM
ANIMATOR'S PALATE	DECK 3, AFT	11:45 AM - 2:00 PM
FILLMORE'S FAVORITES	DECK 11, MID	12:00 PM - 3:30 PM 4:30 PM - 6:00 PM
LUIGI'S PIZZA	DECK 11, MID	12:00 PM - 3:30 PM 4:30 PM - 6:00 PM
TOW MATER'S GRILL	DECK 11, MID	12:00 PM - 3:30 PM 4:30 PM - 6:00 PM

**DINNER**

ANIMATOR'S PALATE	DECK 3, AFT	5:45 PM & 8:15 PM
ENCHANTED GARDEN	DECK 2, MID	5:45 PM & 8:15 PM
PALO (18+) (RESERVATIONS REQ. & NOM. FEE APPLIES)	DECK 12, AFT	6:00 PM - 8:30 PM
REMY (18+) (RESERVATIONS REQ. & NOM. FEE APPLIES)	DECK 12, AFT	6:00 PM - 8:30 PM
ROYAL PALACE	DECK 3, MID	5:45 PM & 8:15 PM
TOW MATER'S GRILL	DECK 11, MID	6:00 PM - 11:00 PM

**LATE NIGHT SNACKS**

LUIGI'S PIZZA	DECK 11, MID	9:30 PM - 12:00 AM
THE DISTRICT	DECK 4, AFT	10:45 PM - 11:45 PM

**ADDED FEATURES**

BEVERAGE STATION	DECK 11, MID	24 HOURS
EYE SCREAM	DECK 11, MID	11:45 AM - 3:30 PM 4:30 PM - 11:30 PM
ROOM SERVICE	DIAL 0	24 HOURS
VANELLOPE'S SWEETS AND TREATS	DECK 11, AFT	11:30 AM - 3:30 PM 4:30 PM - 10:30 PM

**ENTERTAINMENT - LOUNGES - BARS**

Adults must be 21 and older to consume alcoholic beverages.

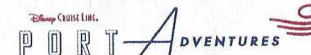
BON VOYAGE	DECK 3, MID	11:30 AM - 11:00 PM
COVE BAR (18+)	DECK 11, FWD	11:30 AM - 10:30 PM
COVE CAFE (18+)	DECK 11, FWD	11:30 AM - 12:00 AM
CURRENTS (18+)	DECK 13, FWD	11:30 AM - 12:00 AM
D LOUNGE	DECK 4, MID	SHOWTIMES
DISTRICT LOUNGE (18+ AFTER 9:00 PM)	DECK 4, AFT	11:30 AM - 2:00 AM
EVOLUTION (18+ AFTER 9:00 PM)	DECK 4, AFT	9:30 PM - 12:00 AM
FROZONE TREATS	DECK 11, MID	11:30 AM - 6:00 PM
MERIDIAN (18+)	DECK 12, AFT	5:00 PM - 12:00 AM
OUTLOOK (18+)	DECK 14, MID	
PINK WINE AND CHAMPAGNE BAR (18+)	DECK 4, AFT	5:00 PM - 12:00 AM
PUB 687 (18+ AFTER 9:00 PM)	DECK 4, AFT	11:30 AM - 12:00 AM
SENSES JUICE BAR	DECK 11, FWD	11:30 AM - 8:00 PM
SKYLINE (18+)	DECK 4, AFT	5:00 PM - 12:00 AM
VISTA CAFE	DECK 4, MID	11:30 AM - 10:30 PM
WAVES	DECK 12, AFT	11:30 AM - 6:00 PM

Public Health Advisory: Consuming raw or under-cooked meats, poultry, seafood, shellfish, or eggs may increase your risk for food borne illness, especially if you have certain medical condition.



**MIDSHIP DETECTIVE AGENCY**

Use your detective know-how and our special detective "badge" to search the ship and catch your criminal! Deck 2 & 5, Midship Kiosks.



Visit the Port Adventures Desk, Deck 5, Midship, for bookings & questions.

**IMPORTANT NUMBERS**

Fire/Security: 7-3001  
Medical Emergency: 7-3000  
Health Center: 7-1927