

VOYAGE

## NAVIGATOR



TO  
TUESDAY  
SEPTEMBER 18, 2018

## CRUISE HIGHLIGHTS

## FRIDAY

SAN DIEGO

Port Departure: 5:00 pm

All Aboard: 4:00 pm

Attire: Cruise Casual

THE  
GOLDEN  
MICKEYS

## THE GOLDEN MICKEYS

Walt Disney Theatre

6:15 pm &amp; 8:30 pm

## SATURDAY

DAY AT SEA

Attire: Halloween or Cruise Casual

MICKEY'S  
MOUSE-QUERADE  
PARTY

## MICKEY'S MOUSE-QUERADE PARTY

Lobby Atrium

6:30 pm &amp; 9:00 pm

## SUNDAY

CABO SAN LUCAS

All Ashore: 8:30 am

All Aboard: 4:45 pm

Attire: Pirate or Cruise Casual



## SHOWTIME: DAVID GATTI

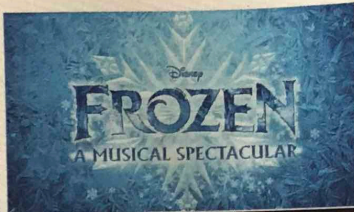
Walt Disney Theatre

6:15 pm &amp; 8:30 pm

## MONDAY

DAY AT SEA

Attire: Optional Dress Up



## FROZEN, A MUSICAL SPECTACULAR

Walt Disney Theatre

6:00 pm &amp; 8:30 pm

## TUESDAY

ENSENADA

All Ashore: 8:30 am

All Aboard: 4:45 pm

Attire: Cruise Casual



## DISNEY DREAMS: AN ENCHANTED CLASSIC

Walt Disney Theatre

6:15 pm &amp; 8:30 pm

Subject to change.

## WELCOME ABOARD!

## YOUR STATEROOM &amp; LUGGAGE

Staterooms will be ready at 1:30 pm. To allow your Stateroom Host/ess time to prepare your room, please do not remove the blue stanchion straps. Stateroom hosts will deliver luggage throughout the day until 5:30 pm.

## STATEROOMS WITH BUNK BEDS

Bunk beds are recessed into the ceiling and will be prepared during evening turndown service by your Stateroom Host/ess.

## STATEROOM SAFE

Each stateroom is equipped with a secured storage safe. Instructions for use are located on the safe.

## TO CHANGE DINING ASSIGNMENT

Requests for different seating times will be taken today:

12:30 pm - 3:30 pm; Book in Promenade Lounge, Deck 3, Aft or please dial 7-10891 and leave a voicemail.

## PALO DINING RESERVATIONS

Reservations are required and will be taken on a first come basis today:

12:30 pm - 3:30 pm; Book in Promenade Lounge, Deck 3, Aft or please dial 7-6843 and leave a voicemail.

**Adult Exclusive Dining Opportunity!** Guests are invited to make 2 dinner reservations at our adult-exclusive restaurant, Palo. This includes one reservation on embarkation evening and one more on another night of the cruise. Reservations are subject to availability and a specialty dining charge will apply.

## DINNER

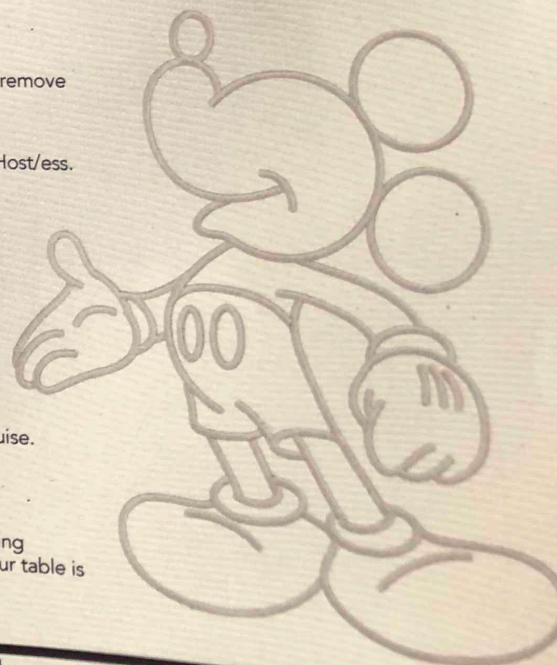
5:45 pm - First seating 8:15 pm - Second seating

Please check your Key To The World Card for details of your dining rotation, and bring them to your specific dining location. There is no need to wait in line prior to dinner. Dining Rooms open at designated seating times and your table is reserved each night of your cruise.

AP = Animator's Palate, Deck 4, Aft

TR = Triton's, Deck 3, Midship

TP = Tiana's Place, Deck 3, Aft



Disney Cruise Line  
PORT ADVENTURES

Create the most memorable experiences during your Disney Cruise Line vacation. Our Port Adventures are designed for you to see the best of our ports. Stop by the Port Adventures Desk, Deck 3, Midship where our friendly team will be happy to assist you plan your adventure! There is an adventure for everyone on your Disney Wonder® vacation.

IMPORTANT NUMBERS

Fire/Security: 7-3001

Medical Emergency: 7-3000

Health Center: 7-1927



## ADULT ACTIVITY HIGHLIGHTS



**1820 SOCIETY (GUESTS 18-20 YEARS ONLY)**  
1820 Society is an exclusive option for young adult Guests. Come meet fellow passengers and learn about the excellent activities that the Disney Wonder offers to create the perfect cruise experience.



**80'S FLASHBACK**  
The 80's are back! Join your Cruise Staff team, in testing your 80's knowledge in this high energy 80's revival.



**ANYONE CAN COOK**  
Every Chef has a specialty, and ours is no exception. Get a taste of perfection with each recipe.

**ART OF THE THEME SHOW TOUR**  
Join us for a guided tour highlighting the design, Imagineering and artistry of the ship. This tour is reserved for Guests 18 and over.

**CRUISIN' SOLO GATHERING**  
Single, single parent or just traveling alone? Join your Cruise Staff for an informal gathering.



**DISNEY INNOVATIONS**  
Take part in our presentation on the 'Top 10' innovations presented by the Walt Disney Company.



**HALLOWEEN ISN'T JUST FOR KIDS**  
Flaunt your wild side and compete in our adults only costume contest. We hope to see you scaring up some fun on the dance floor. Trick or Treat isn't just for Kids...anymore.



**MATCH YOUR MATE**  
It's time to play everyone's favorite couples game show, Match Your Mate!



Senses Spa & Salon has a variety of seminars and fitness classes available throughout the cruise. Pamper yourself with therapeutic spa treatments of heat, steam, rain and water in luxurious and tranquil private rooms. Deck 9, Forward.

### BEVERAGE SEMINARS

Your Beverage team has a host of tastings and seminars to entertain and educate you. Stop by Promenade Lounge, Deck 3, Aft to pre-book these experiences (nominal fee applies).

Mixology - Stem to Stern Wine Tasting - Martini Tasting - Mojito Tasting  
Beer Tasting - Cognac Tasting - Whisky Tasting - Champagne Tasting  
Tequila & Margarita Tasting - Chocolate & Liquor Tasting - Rum Tasting



## FUN FOR ALL AGES HIGHLIGHTS



### ADVENTURES AWAY

Earn your status as V.I.P. sailors as your Cruise Director, your Disney Pals, and the Cruise Staff officially begin your "Adventures Away".

### A PIRATES LIFE FOR ME

Calling all Pirates, we be! If ye have an adventurous spirit or pirate savvy, come spin the "Wheel of Destiny" for a treasure trove of fun be ripe for the takin' in this action packed pirate game show.



### DISNEY MOVIE CHALLENGE POOLSIDE

So you like movies? And you like bingo? This deck party has them both! Come on out to watch all your favorite movie clips and just maybe your team will win the opportunity to choose the movie played by the pool today!



### DISNEY VACATION CLUB GROUP PREVIEW

Join us for our interactive group presentation to learn about taking magical vacations year after year! For more information, please see a Disney Vacation Club Cast Member on Deck 4, Midship, or call 7-2805 from your stateroom phone.



### HAUNTED STORIES OF THE SEA

Join our Sea Captain for the Halloween tradition of telling ghostly tales of the strange, bizarre and just plain scary that will leave even the bravest of souls with a chill.



### JACK-JACK'S INCREDIBLE DIAPER DASH

Calling all baby cruisers! It's time to take to the mat to see who's the fastest crawler of the seven seas! Register your baby 15 minutes prior to the big race.



### JACKPOT BINGO

CASH prizes and raffle prizes to be won in our family friendly Bingo sessions with your Cruise Staff. Those under the age of 18 must be accompanied by an adult to play!



### MICKEY 200

Don't eat your vegetables... race them in this wild and wacky charge to the finish line. May the best veggie win! (Limited Availability)



### MICKEY MANIA

Join us for the ultimate test of your Disney knowledge as we play our live, interactive game show, that's "insania!"



### MICKEY'S MOUSE-QUERADE PARTY

Enjoy a fun "Mouse-Querade" featuring music, games, a visit from some of your favorite Disney Pals in their Halloween costumes and of course treats.



### PIRATES IN THE CARIBBEAN DECK PARTY

Yer Disney Friends are all set for a swashbucklin' good time! It's a Pirate Celebration, me hearties! Hoist yourself to Deck 9 to enjoy a rowdy buccaneer bash we call Pirates IN the Caribbean Deck Party.



### SALUDOS AMIGOS FIESTA

Come see what Donald and his friends are up to this time. Bring the family out to this interactive dance party featuring fun Latin music! Your family will learn to salsa, merengue and just have a Latin good time!



### SO YOU THINK YOU KNOW YOUR FAMILY?

This fun-filled family game show is always full of surprises. Find out how well you know, or don't know your family!



### THE PUMPKIN TREE

Join us in the Lobby Atrium for some frightening fun, as we celebrate Halloween with a spooky ceremony that will have you screaming with ghoulish delight.



### WHO WANTS TO BE A MOUSEKETEEER?

Your chance to get into the "hot seat" and win limited edition prizes. Or, play along as part of our live studio audience.



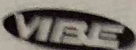
### 'TIL WE MEET AGAIN

The world-famous Disney Characters and some of your new friends from the Disney Wonder stage shows bid you a charming farewell.

Please Check Daily Personal Navigator for all times and locations.



# YOUTH ACTIVITIES INFO & HIGHLIGHTS



## Dine & Play

As a convenience for families dining at 8:15 pm, our Youth Activities counselors will be available at the entrance of each restaurant to bring registered children to join the fun in the Youth Activities areas at the following times:

9:15 pm at the entrance of Triton's,  
9:30 pm at the entrance of Tiana's Place and Animator's Palate.

## Pre-School Fun

Disney's Oceaneer Club is reserved for only those between 3-5 years of age. This is a time for them to become acclimated to Disney's Oceaneer Club, make new friends and join in on a lot of fun-filled programs and activities. Please note after Pre-School Fun has concluded, Disney's Oceaneer Club will be open for Secured Programming for ages 3-12.

## Youth Activities Open House

Open House is an opportunity for all to come and participate in a variety of exciting activities and free time in the Oceaneer Club, Oceaneer Lab, Edge and Vibe throughout the cruise. During these times secured programming will still be offered in the other venue for those looking to check their children into care.

## Youth Activities Venue Tour

Come and take a tour of Disney's Oceaneer Club and Disney's Oceaneer Lab. This informative tour will give you the information you need to know about our exciting spaces and activities offered for children ages 3-12. Please see your Personal Navigator or the Navigator App for times.



3 - 12 years old

## JOIN THE LION GUARD

Harness your inner animal and find out if you have what it takes to join the Lion Guard!

## MILES' COSMIC EXPLORER ADVENTURES

Miles needs your help! Gadfly has stolen his tech, and it's up to you to solve clues and puzzles in order to return the missing items back to Miles.

## SOFIA THE FIRST - MAGICAL STORYTELLING

You're invited to take part in Sorcery 101 at the Royal Prep Academy, where you'll learn a few spells and help retell one of Sofia's many magical adventures.



3 - 12 years old

## LAVA FLOW

Build your own volcano and watch it erupt as you learn about the physics of volcanoes.

## MAKE A SHOW DISNEY STYLE

OPEN CALL - kids needed for a fun, one of a kind, make it your own show. Working in teams you'll have everything you need to make your own show in 90 minutes or less. Whether you're a Beauty or a Beast, you're sure to have fun!

## ANIMATION ANTICS

Learn simple animation techniques and then put your new skills to use by drawing some of your favorite Disney Characters.



11 - 14 years old

## DESCENDANT'S DEN DJ SPIN OFF

Photo Booth! DJ lessons! Fun games! Sing! Laugh! Dance! It's the next generation of fun - Descendants style!

## HEROES AND VILLAINS

Join your favorite hero or villain team on a series of activities that will take place throughout the cruise.



14 - 17 years old

## GOTCHA

You will try to eliminate your victim by various methods collecting points throughout the day, last person standing with the most points wins.

## HAUNTED MANSION FAMILY PORTRAITS

Grim grinning ghosts come out to socialize as teens get transformed in a ghoulish photo shoot that is guaranteed to bring the spooks out for a swinging wake!

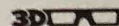
# BUENA VISTA THEATRE

Deck 5, Aft

## FEATURE MOVIES THIS VOYAGE

### FRIDAY - SAN DIEGO

1:45 pm	PG	A Wrinkle in Time
5:30 pm	PG	Coco
8:00 pm	PG	Coco
10:15 pm	PG-13	Avengers: Infinity War



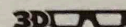
### SATURDAY - DAY AT SEA

8:30 am	PG	Family Movie Fun Time: Coco
12:30 pm	PG	The Incredibles 2
3:00 pm	PG	Christopher Robin
5:15 pm	PG-13	Solo: A Star Wars Story
8:00 pm	PG-13	Solo: A Star Wars Story
10:45 pm	PG	The Incredibles 2

cc Open Captioning

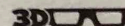
### SUNDAY - CABO SAN LUCAS

12:15 pm	PG	Christopher Robin
2:30 pm	PG-13	Avengers: Infinity War
5:30 pm	PG	Christopher Robin
8:00 pm	PG	Christopher Robin
10:45 pm	PG-13	Solo: A Star Wars Story



### MONDAY - DAY AT SEA

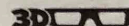
10:00 am	PG	Christopher Robin
12:15 pm	PG-13	Ant-Man and The Wasp
2:45 pm	PG	The Incredibles 2
5:30 pm	PG-13	Ant-Man and The Wasp
8:00 pm	PG-13	Ant-Man and The Wasp
10:30 pm	PG	Christopher Robin



### TUESDAY - ENSENADA

10:00 am	PG	The Incredibles 2
12:30 pm	PG-13	Ant-Man and the Wasp
3:00 pm	PG	Christopher Robin
5:15 pm	PG	The Incredibles 2
8:00 pm	PG	The Incredibles 2
10:30 pm	PG-13	Ant-Man and the Wasp

cc Open Captioning



Subject to change.

## FEATURED VARIETY ACTS THIS VOYAGE



### THE AMAZING ILLUSIONS OF DAVID GATTI

An award winning magician, Gatti is an Italian by birth who has been hooked by illusion and wizardry since childhood. Over an illustrious career of 2 decades, the state-of-the-art magician has mesmerized many with his incredible and unique talents through several Euro TV shows and Satellite programs recently headlining his show in Las Vegas. He has performed in more than 50 countries across 4 continents. The theatrical storytelling style and incredible sleight of Hand, are his trademarks.



### THE PHYSICAL-COMEDY OF HEATH HYCHE

Heath uses stand-up comedy, quick-change costumes, original music, sound effects, and cleverly constructed props and scenery to take the audience on a journey through his vivid imagination and meet a cavalcade of manic characters. Heath Hyche's TV credits include "The Tonight Show with Jay Leno", "Last Comic Standing", and two seasons on "Blue Collar TV" alongside Jeff Foxworth, Larry the Cable Guy, and Bill Engvall. On the big screen, Heath appeared in the films "Man on the Moon" with Jim Carrey and Will Ferrell's "Talladega Nights".



# MORE TO ENJOY ONBOARD

## NEW SPRING 2019 ITINERARIES

New Spring 2019 Itineraries announced! Set sail for favorite tropical destinations as Disney Cruise Line will return to The Bahamas, Caribbean and even Baja cruises! Visit the Disney Vacation Planning desk, Deck 4, Midship for more information. Disney Vacation Planning tends to get busy on the last day of sailing. Don't miss the opportunity to plan your next Disney vacation.

## DISNEY VACATION CLUB® GROUP PREVIEW

Join us for our interactive group presentation to learn about taking magical vacations year after year! For more information, please see a Disney Vacation Club Cast Member on Deck 4, Midship, or call 7-2805 from your stateroom phone.

## PORT SHOPPING INFORMATION

Come and meet Sal, your Port Shopping Guide, at the Port Shopping Desk, Deck 3, Midship from 7:00 pm - 8:30 pm for a complimentary charm. Don't miss the Port Shopping Talk on Day at Sea 1 in the Buena Vista Theatre, Deck 5, Aft, at 11:00 am for all of your Port Shopping information and to enter a raffle for a chance to win a Diamond Pendant. Tune into Channel 24-6 all cruise long for more Port Shopping information.

## Connect@Sea

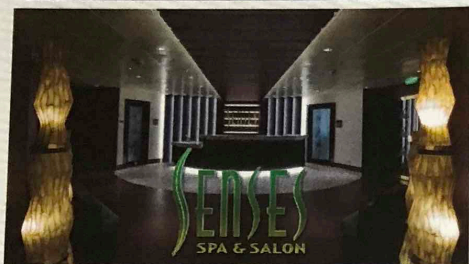
### FREE INTERNET EMBARKATION DAY SPECIAL

Sign up for a free 50 MB Internet package today and enjoy it throughout the cruise! This offer is only available from noon to midnight on the day your cruise begins. On your wireless device, simply find the "DCL-Guest" Wi-Fi Network, go to [www.dclguest.com](http://www.dclguest.com) to create an account, and get your free 50 MB of data to start sharing your memories even before you leave port! If you have any questions, ask our Connect@Sea Expert located at Deck 3, Midship. No purchase necessary. The free 50 MB package can only be used for the duration of the cruise. Only one free package per stateroom, but everyone can share it. Unused data from a package will not be reimbursed and it is non-transferable between voyages or ships.

### RELIGIOUS SERVICES

Groups who need a location to practice their faith may contact Guest Services for availability information.

## SENSES SPA & SALON



DECK 9, FORWARD  
Extension 7-1465

### RAINFORREST

Come enjoy our serenity lounge, with heated chairs, dry sauna, aromatherapy steam rooms and rainfall, misting showers. 5 Day Pass: Couples \$169 Single \$114

### REJUVENATION SPA CONSULTATIONS

Ready to enhance your natural beauty? Book your free Facial Rejuvenation consultation with our Rejuvenation Doctor at the Senses Spa.

### ONBOARD ACUPUNCTURE

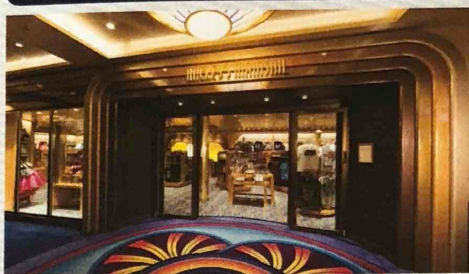
Acupuncture is a safe and effective medicine that allows your body to heal itself, and is effective for various health conditions. See your onboard Acupuncturist for your free consultation.

### BIOTEC FACIALS

Our revolutionary facials address skin tone, blemishes and fine lines to transform the texture of the skin. The ultrasonic peel, massage and light therapy deliver a complexion that has never been smoother.

AN 18% AUTO GRATUITY IS ADDED TO ALL SENSES SPA SERVICES.

## MERCHANDISE SHOPPING



DECK 4, FORWARD

### TAG HEUER TIMEPIECES

Travel through time with TAG Heuer, and discover the luxury Swiss watchmaker's latest collection. Visit White Caps, Deck 4, Forward.

### EFFY JEWELRY SPECIAL OFFER

The stylish Effy jewelry pieces are designed to allow you the opportunity to mix and match to create a look that's all your own. Receive a complimentary Effy scarf and jewelry pouch with each Effy jewelry purchase. While supplies last. White Caps, Deck 4, Forward.

### BIBBIDI BOBBIDI BOUTIQUE

A makeover fit for a princess! Fairy Godmothers-in-Training are ready with magic and pixie dust to give your Prince and Princess the transformation of a lifetime. Make your reservations by visiting Bibbidi Bobbidi Boutique, Deck 10, Forward, Port Side, or dialing extension 7-10878. Limited space available.

### DOONEY & BOURKE: CHARACTER EXPERIENCE

Dooney & Bourke bags are reborn in this new Disney Cruise Line Character Experience collection. With enhanced materials and more intricate designs, these new bags are sure to be an inspired addition to your collection. White Caps, Deck 4, Forward.

DUE TO PORT REGULATIONS, WHEN THE SHIP IS DOCKED, THE STORES WILL REMAIN CLOSED.

## SHUTTERS PHOTO GALLERY



DECK 4, AFT

### WELCOME ABOARD RAFFLE

View your embarkation photos in Shutter's, Deck 4, Aft and enter our raffle for a chance to win a 10 Digital Photos valued at \$149.95. Winner must be present at the 10:00 pm drawing in Shutter's, Deck 4, Aft. \*Terms and conditions apply.

Visit Shutter's on Deck 4, Aft for more information.

### GET THE PICTURE!

Take home all your stateroom photos from this cruise on a USB! Terms and conditions apply. Visit Shutter's on Deck 4, Aft and ask your friendly Shutter's staff for more information. Get The Picture! Hurry! Order yours now.

### PHOTO BOOK

Turn your magical vacation memories into an impressive keepsake with a personalized PhotoBook. Order by 9:30 pm on the final night of the cruise.

### PRIVATE STUDIO PORTRAITURE

Book our exclusive and contemporary Private Studio experience today and capture these memories. No obligation to purchase. Black and White only.

PHOTOS ARE AVAILABLE FOR VIEWING ON OUR INTERACTIVE PHOTO KIOSKS APPROXIMATELY FIVE HOURS AFTER BEING TAKEN AND ARE ONLY AVAILABLE FOR PURCHASE DURING THIS CRUISE.

## IMPORTANT INFORMATION

**Security Notice/Unaccompanied Minor Ashore**  
All Guests (including children) who wish to disembark or embark the ship are required to present their Key to the World card at the gangway. A photo ID is also required for those Guests who are 18 years of age or older. Guests under the age of 18 are required to have a Parent, Guardian or other responsible adult complete the "Traveling with Minors" section of "My Online Check-In" prior to sailing or sign an authorization form at the Guest Services Desk if they wish to go ashore unaccompanied or with any adult from another stateroom.

**Inclement Weather**  
For the safety of all Guests, outdoor events may be changed due to unforeseen weather conditions.  
**Insect Repellent Advisory**  
The Centers for Disease Control and Prevention recommends wearing long-sleeved shirts and pants along with insect repellent to protect against mosquito bites and related illnesses when going ashore. Complimentary insect repellent is available on the pier as you exit the ship. Insect repellent is also available for purchase in White Caps. When using both sunscreen and insect repellent, use sunscreen first and apply insect repellent on top of sunscreen.

**Corridor Quiet Hours**  
As a courtesy to all our Guests, please recognize quiet hallway hours from 10:00 pm til 8:00 am.  
**No Reserved Seats Policy**  
As a courtesy to all our Guests, we kindly advise that the saving of seats is not permitted in the Walt Disney Theatre, and the saving of the sun loungers is not permitted on Deck 9 and 10. Items left unattended will be returned to lost and found at Guest Services, Deck 3 Midship.  
**Cold and Flu Reminder**  
Please wash hands frequently and thoroughly, particularly before meals. Contact the Health Center by dialing 7-1927, should anyone in your party become ill.

**Smoking**  
For the comfort of our Guests, the following areas are designated as smoking areas:  
\*Deck 9, Forward, Port Side  
\*Deck 4, Starboard side from 6:00 pm to 6:00 am only (all of Deck 4 is non-smoking from 6:00 am to 6:00 pm)  
Smoking is prohibited inside all Guest staterooms and on stateroom verandahs. Guests found smoking in their staterooms or on their verandahs will be charged a \$250 stateroom recovery fee. Electronic cigarettes may only be used in designated smoking areas.

**Walt Disney Theatre**  
Theatrical performances may use artificial fog, strobe lights, pyrotechnics and other special effects. For the safety of our performers, and the comfort of those around you, the use of any photography, video recording device or any electronic equipment is prohibited.  
**Verandah Safety**  
Please do not leave any personal items on your verandah that may be blown overboard or present a fire hazard if left unattended. Do not throw anything over the ship's side. Guests should not sit, lean or climb on the railing or leave children unattended on the verandah. Do not open the verandah and stateroom doors simultaneously as this may create a wind effect and could cause the doors to slam unexpectedly.









# THE GOLDEN MICKEYS

## WALT DISNEY THEATRE

Deck 4, Forward  
6:15 pm & 8:30 pm

As a courtesy to all Guests, we kindly advise that the saving of seats is **not** permitted in the Walt Disney Theatre.

Assistance is available at the entrance to the Walt Disney Theatre 30 minutes prior to show time.

### Character Meet & Greet Ticket Distribution

*Port Adventures Desk, Deck 3, Midship - 12:00 pm - 2:00 pm*

For Guests who did not reserve meet and greets online, a limited number of tickets are available today to meet some of your favorite Disney friends.

**Princess Gathering ~ Frozen Meet and Greet**

Tickets are required for each of these meet and greets.  
Space is limited.

### Character Appearances

**BELLE**  
DK4 Mid (S) - 11:45 am

**CHIP & DALE**  
Lobby Atrium (P) - 7:45 pm

**ARIEL**  
DK4 Mid (S) - 12:15 pm

**PLUTO**  
Lobby Atrium (P) - 10:00 pm

**JOIN THE LION GUARD**  
Disney's Oceaneer Club - 2:00 pm

**ADVENTURES AWAY**  
Deck 9 Stage - 4:30 pm

**DONALD DUCK**  
DK4 Mid (S) - 5:15 pm

**GOOFY**  
Lobby Atrium (P) - 5:30 pm

**MICKEY MOUSE**  
DK4 Mid (S)  
5:45 pm, 8:00 pm & 10:15 pm

**MINNIE MOUSE**  
DK4 Mid (S)  
7:30 pm & 9:45 pm



(S) Starboard Side - (P) Port Side

For details of daily Disney character appearances, refer to the character line on your Navigator Grid, or the digital character board in the Lobby Atrium.  
Lines close 15 minutes after advertised start time.

## SHIP DIRECTORY

### YOUTH ACTIVITIES

DISNEY'S OCEANEER CLUB	DECK 5, MID	12:00 PM - 3:30 PM 4:30 PM - 12:00 AM
DISNEY'S OCEANEER LAB	DECK 5, MID	12:00 PM - 3:30 PM 4:30 PM - 12:00 AM
EDGE	DECK 9, MID	12:00 PM - 3:30 PM 4:30 PM - 12:00 AM
IT'S A SMALL WORLD NURSERY	DECK 5, AFT	12:00 PM - 3:30 PM 4:30 PM - 11:00 PM
VIBE	DECK 10, MID	12:00 PM - 3:30 PM 4:30 PM - 12:00 AM

### POOLS

Children under 12 years of age must have adult supervision in all pools.

AQUALAB	DECK 9, AFT	12:00 PM - 3:30 PM 4:30 PM - 6:00 PM
DORY'S REEF	DECK 9, AFT	12:00 PM - 3:30 PM 4:30 PM - 6:00 PM
GOOFY'S POOL	DECK 9, MID	12:00 PM - 3:30 PM 6:00 PM - 9:00 PM
QUIET COVE POOL (18+)	DECK 9, FWD	12:00 PM - 3:30 PM 4:30 PM - 11:00 PM
TWIST N' SPOUT	DECK 9, AFT	12:00 PM - 3:00 PM 4:30 PM - 6:00 PM

Please note, "selfie sticks" are not permitted in any aquatic area.  
Complimentary pool vests are available for children to use in the pools onboard.  
They are located on the pool deck.

### RECREATION

CHILL SPA	DECK 9, FWD	12:00 PM - 10:00 PM
PORT ADVENTURES DESK	DECK 3, MID	12:00 PM - 3:30 PM 4:30 PM - 8:30 PM
SENSES FITNESS CENTER (18+)	DECK 9, FWD	12:00 PM - 10:00 PM
WIDE WORLD OF SPORTS DECK	DECK 10, FWD	12:00 PM - 3:30 PM 3:30 PM - 11:59 PM

### GENERAL INFORMATION

BUENA VISTA THEATRE	DECK 5, AFT	SHOWTIMES
CONNECT@SEA DESK	DECK 3, AFT	1:00 PM - 4:00 PM 7:00 PM - 10:00 PM
DISNEY VACATION CLUB DESK	DECK 4, MID	5:00 PM - 10:00 PM
DISNEY VACATION PLANNING DESK	DECK 4, MID	7:00 PM - 8:30 PM
FUNNEL VISION	DECK 9, MID	SHOWTIMES
GUEST SERVICES	DECK 3, MID	24 HOURS
HAIR BRAIDING	DECK 9, MID	4:30 PM - 6:30 PM
MEDICAL HEALTH CENTER	DECK 1, FWD	4:30 PM - 7:00 PM
PORT SHOPPING DESK	DECK 3, MID	7:00 PM - 8:30 PM
PRELUDES	DECK 4, FWD	SHOWTIMES
SENSES SPA AND SALON	DECK 9, FWD	12:00 PM - 10:00 PM
SHUTTERS PHOTO GALLERY	DECK 4, AFT	6:00 PM - 10:30 PM
WALT DISNEY THEATRE	DECK 4, FWD	SHOWTIMES

### SHOPPING

ART GALLERY	DECK 4, MID	
BIBBIDI BOBBIDI BOUTIQUE	DECK 10, FWD	12:00 PM - 3:00 PM 5:00 PM - 9:00 PM
MICKEY'S MAINSAIL	DECK 4, FWD	6:00 PM - 11:00 PM
QUACKS	DECK 9, MID	
SEA TREASURES	DECK 3, FWD	6:15 PM - 10:00 PM
WHITE CAPS	DECK 4, FWD	6:00 PM - 11:00 PM



### TIME ZONE CHANGE

Remember to turn your clocks **FORWARD 1 HOUR** upon retiring on **FRIDAY** evening, or first thing **SATURDAY** morning.

**EVENING ATTIRE** Cruise Casual

**WEATHER FORECAST** Today: Sunny  
High: 80 F/27°C

## DINING & LOUNGES

### LUNCH

CABANAS	DECK 9, AFT	12:00 PM - 3:00 PM
DAISY'S DE LITES	DECK 9, AFT	12:00 PM - 3:30 PM
PINOCCHIO'S PIZZERIA	DECK 9, MID	12:00 PM - 3:30 PM 4:30 PM - 6:00 PM
PETE'S BOILER BITES	DECK 9, AFT	12:00 PM - 3:30 PM
TRITON'S (A-LA CARTE)	DECK 3, MID	11:45 AM - 1:30 PM

### DINNER

ANIMATOR'S PALATE	DECK 4, AFT	5:45 PM & 8:15 PM
DAISY'S DE LITES	DECK 9, AFT	4:30 PM - 6:00 PM
PALO (18+)	DECK 10, AFT	6:00 PM - 8:30 PM
PETE'S BOILER BITES	DECK 9, AFT	4:30 PM - 9:30 PM
TIANA'S PLACE	DECK 3, AFT	5:45 PM & 8:15 PM
TRITON'S	DECK 3, MID	5:45 PM & 8:15 PM

### LATE NIGHT SNACKS

CROWN & FIN PUB (18+ AFTER 9:00 PM)	DECK 3, FWD	10:30 PM - 11:30 PM
PINOCCHIO'S PIZZERIA	DECK 9, MID	9:30 PM - 12:00 AM
PROMENADE LOUNGE	DECK 3, AFT	10:30 PM - 11:30 PM

### ADDED FEATURES

BEVERAGE STATION	DECK 9, AFT, PORT SIDE	24 HOURS
EYE SCREAM	DECK 9, MID	12:00 PM - 3:30 PM 4:30 PM - 11:00 PM
ROOM SERVICE	DIAL 4330	OPENS AT 1:30 PM

### ENTERTAINMENT - LOUNGES - BARS

Adults must be 21 and older to consume alcoholic beverages.

AZURE (18+ AFTER 9:00 PM)	DECK 3, FWD	7:30 PM - 1:00 AM
CADILLAC LOUNGE (18+)	DECK 3, FWD	6:00 PM - 12:00 AM
COVE CAFE (18+)	DECK 9, MID	11:45 AM - 12:00 AM
CROWN & FIN PUB (18+ AFTER 9:00 PM)	DECK 3, FWD	11:45 AM - 12:00 AM
D LOUNGE	DECK 4, MID	SHOWTIMES
PINOCCHIO'S PIZZERIA	DECK 9, MID	11:45 AM - 12:00 AM
PRELUDES	DECK 4, FWD	SHOWTIMES
PROMENADE LOUNGE	DECK 3, AFT	11:45 AM - 12:00 AM
SIGNALS (18+)	DECK 9, FWD	11:45 AM - 10:00 PM
SULLEY'S SIPS	DECK 9, MID	11:45 AM - 5:30 PM

Public Health Advisory: Consuming raw or under-cooked meats, poultry, seafood, shellfish, or eggs may increase your risk for food borne illness, especially if you have certain medical conditions.

Disney CRUISE LINE  
**PORT ADVENTURES**

Explore and more with our carefully selected Port Adventures. Visit the Port Adventures Desk, Deck 3, Midship to find out more.

### IMPORTANT NUMBERS

Fire/Security: 7-3001  
Medical EMERGENCY: 7-3000  
Health Center: 7-1927