

# VOYAGE NAVIGATOR



SUNDAY  
SEPTEMBER 9, 2018

TO

THURSDAY  
SEPTEMBER 20, 2018

## CRUISE HIGHLIGHTS (WEEK 1)

### SUNDAY

DOVER, ENGLAND  
Port Departure: 5:00 pm  
All Aboard: 4:00 pm  
Attire: Cruise Casual



**BE OUR GUEST - WELCOME ABOARD SHOW**  
Walt Disney Theatre  
6:30 pm & 8:45 pm

### MONDAY

PORTLAND (STONEHENGE), ENGLAND  
All Ashore: 7:00 am  
All Aboard: 3:00 pm  
Attire: Cruise Casual



**SHOWTIME: JUST JOHN AND PAUL**  
Walt Disney Theatre  
6:30 pm & 8:45 pm

### TUESDAY

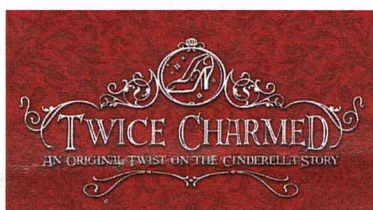
COBH (CORK), IRELAND  
All Ashore: 9:15 am  
All Aboard: 5:30 pm  
Attire: Cruise Casual



**SHOWTIME: JOHN CHARLES**  
Walt Disney Theatre  
6:30 pm & 8:45 pm

### WEDNESDAY

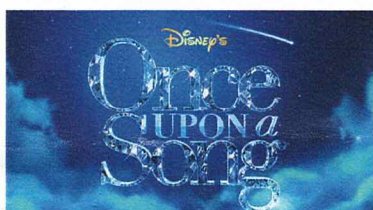
DAY AT SEA  
Attire: Formal



**TWICE CHARMED**  
Walt Disney Theatre  
6:30 pm & 8:45 pm

### THURSDAY

DAY AT SEA  
Attire: Cruise Casual



**ONCE UPON A SONG**  
Walt Disney Theatre  
6:30 pm & 8:45 pm

Subject to change.

### FRIDAY

DAY AT SEA  
Attire: Pirate or Cruise Casual



**SHOWTIME: UKEBOX**  
Walt Disney Theatre  
6:30 pm & 8:45 pm

## WELCOME ABOARD!

### YOUR STATEROOM & LUGGAGE

Staterooms will be ready at 1:30 pm. To allow your Stateroom Host/ess time to prepare your room, please do not remove the blue stanchion straps. Stateroom hosts will deliver luggage throughout the day until 5:30 pm.

### STATEROOMS WITH BUNK BEDS

Bunk beds are recessed into the ceiling and will be prepared during evening turndown service by your Stateroom Host/ess.

### STATEROOM SAFE

Each stateroom is equipped with a secured storage safe. Instructions for use are located on the safe.

### TO CHANGE DINING ASSIGNMENT

Requests for different seating times will be taken today:

11:45 am - 3:00 pm; Book in Promenade Lounge, Deck 3, Aft or please dial 7-1831 and leave a voicemail.

### PALO DINING RESERVATIONS

Reservations are required and will be taken on a first come basis today:

11:45 am - 3:00 pm in Promenade Lounge, Deck 3, Aft, or please dial 7-6843 and leave a voicemail.

**Adult Exclusive Dining Opportunity!** Guests are invited to make 2 dinner reservations at our adult-exclusive restaurant, Palo. This includes one reservation on embarkation evening and one more on another night of the cruise.

### DINNER

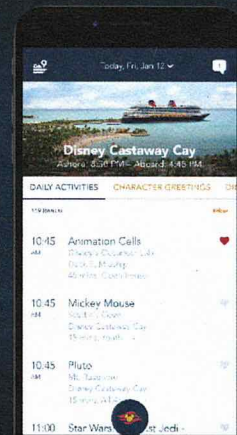
6:00 pm - First seating 8:30 pm - Second seating

Please check your Key To The World Card for details of your dining rotation, and bring it to your specific dining location. There is no need to wait in line prior to dinner. Dining Rooms open at designated seating times and your table is reserved each night of your cruise.

A = Animator's Palate, Deck 4, Aft L = Lumière's, Deck 3, Midship R = Rapunzel's Royal Table, Deck 3, Aft

DOWNLOAD THE NEW  
**DISNEY CRUISE LINE  
NAVIGATOR APP**  
BEFORE YOU SAIL AWAY

Available  
on iOS  
and  
Android



Create the most memorable experiences during your Disney Cruise Line vacation with Port Adventures! Our Port Adventures are designed for you to see the best our ports have to offer. Stop by the Port Adventures Desk, Deck 3, Midship where our friendly team will be happy to assist you plan your adventure!  
There is an adventure for everyone on your Disney Magic® vacation.

IMPORTANT NUMBERS

Fire/Security: 7-3001

Medical Emergency: 7-3000

Health Center: 7-1927



## FEATURED VARIETY ACTS THIS WEEK



**THE PERCUSSION & COMEDY OF JUNNK**  
JunNk use bins, bottles, ladders and drainpipes to create a lively, hilarious and utterly enthralling fast paced show, providing a fresh outlook on today's modern entertainment scene.



**THE MUSIC OF JUST JOHN & PAUL**  
Two brothers, Glen & Dean, are passionate about The Beatles. In the music business for over 20 years and performing in Beatle Tributes since 1995, they are the longest running "Lennon and McCartney" tribute! This isn't merely an impersonation....it's the feel of The Beatles!



**THE MUSIC & COMEDY OF JOHN CHARLES**  
With just his guitar, and his incredible singing voice, John Charles amazes his audience with his ability to combine music, comedy and audience interaction. No two shows are ever alike!



**THE MUSIC AND STORIES OF WILL & ANTHONY NUNZIATA**  
Join brothers Will & Anthony Nunziata on this magical, musical ride through the music and stories behind the creation of your favorite Disney songs.



**THE MUSIC OF UKEBOX**  
This ensemble of four draws on the flawless tonal qualities of the Ukulele. A completely unique sound with fresh arrangements of almost every genre and artist thinkable. From 'The Beach Boys' to 'Beyonce' there is something for everyone.

## GUEST PRESENTERS THIS WEEK

### BALLROOM DANCERS, ROMAN & SVETLANA

Join Roman & Svetlana, our ballroom dance duo, as they perform and teach many different styles of Dance throughout the voyage.

### CHEF BRAD SCHOLTEN

Brad Scholten, executive chef at The Crystal Palace at Magic Kingdom Park joins us on our voyage. He will bring a wealth of experience and knowledge in our Adult-Exclusive Anyone Can Cook Culinary Series. In each session he will demonstrate and cook mouthwatering cuisines. Recipes and tastings included.

### DISNEY ON BROADWAY STAR MICHELLE MALLARDI

Featuring the vocal talents of Disney Theatrical performer Michelle Mallardi, who starred as Belle in Disney's Beauty and the Beast on Broadway.

### LARS LEIGHT

Few know Banfi Vintners and its wines better than Lars Leicht, Trade Development Director and 32-year company veteran. And few professionals in the wine world are more dedicated to and passionate about the relationship between food and wine. Since 1998 Lars guides annual trips to the vineyards and wineries of Italy for the Guild of Sommeliers, hosting over 100 sommeliers to date as Italian wine culture sherpa. As adept at the stove as at the iPad, Lars continuously, with wit and style, brings new insight to food and wine pairing, never letting us forget that wine is food.

**Note** - Pre-booking is required. There is a nominal fee for tasting events.

### WALT DISNEY IMAGINEER GARY LANDRUM

Gary Landrum is a Senior Show Awareness Producer with Walt Disney Imagineering, leading the Show Awareness program in Florida. In this role, Gary archives the original design intent and stories for the Walt Disney World Resort property. He then creates educational materials and presentations that teach the fascinating world behind the creation of Disney Theme Parks, Resorts, Cruise Ships, and Entertainment venues around the world.

## FUN FOR ALL AGES HIGHLIGHTS



### ADVENTURES AWAY

Earn your status as V.I.P. sailors as your Cruise Director, your Disney Pals, and the Cruise Staff officially begin your "Adventures Away".



### A PIRATES LIFE FOR ME

Calling all Pirates, we be! If ye have an adventurous spirit or pirate savvy, come spin the "Wheel of Destiny" fer a treasure trove of fun be ripe for the takin' in this action packed pirate game show.



### BOAT BUILDING BASH SIGN-UPS

Is your team up to the challenge to build your own boat? It will take imagination and creativity.



### DISNEY JUNIOR PIRATE & PRINCESS DANCE PARTY

Calling all Pirates and Princesses! Come join us for a family dance party featuring music and fun activities from Jake & the Neverland Pirates and Sofia the First. Whether you favor tiaras or treasure chests, there's something for you at our Disney Junior Pirate & Princess Dance Party!



### DISNEY VACATION CLUB GROUP PREVIEW

Join us for our interactive group presentation to learn about taking magical vacations year after year! For more information, please see a Disney Vacation Club Cast Member on Deck 4, Midship, or call 7-2805 from your stateroom phone.



### JACKPOT BINGO

CASH prizes and raffle prizes to be won in our family friendly Bingo sessions with your Cruise Staff. Those under the age of 18 must be accompanied by an adult to play.



### PIRATES IN THE CARIBBEAN DECK PARTY

Yer Disney Friends are all set for a swashbucklin' good time! It's a Pirate Celebration, me hearties! Hoist yourself to Deck 9 to enjoy a rowdy buccaneer bash we call Pirates IN the Caribbean Deck Party. (Weather Permitting)



### SALUDOS AMIGOS FIESTA

Come see what Donald and his friends are up to this time. Bring the family out to this interactive dance party featuring fun Latin music! Your family will learn to salsa, merengue and just have a Latin good time!



### SO YOU THINK YOU KNOW YOUR FAMILY?

This fun-filled family game show is always full of surprises. Find out how well you know, or don't know your family!



### THE COGSWORTH COUNTDOWN

Beat the clock with these one of a kind games. It's time for some fast-paced fun. Tick tock, Cogsworth is watching!



### WAKE UP WITH DISNEY JUNIOR

What happens when you experience unlimited fun with your favorite Disney Junior shows? You get an exciting dance party designed especially for preschoolers ages seven and under.

### ART OF THE THEME SHOW TOUR

Join us for a guided tour highlighting the design, Imagineering and artistry of the ship.

**Pre-Booking is required for this event. Please visit the Guest Services Desk or Port Adventures Desk to register.**



## ADULT ACTIVITY HIGHLIGHTS



### 1820 SOCIETY (GUESTS 18-20 YEARS ONLY)

1820 Society is an exclusive option for young adult Guests. Come meet fellow passengers and learn about the excellent activities that the Disney Magic offers to create the perfect cruise experience.

### ANYONE CAN COOK

Every Chef has a specialty, and ours is no exception. Get a taste of perfection with each day's recipe.

### MATCH YOUR MATE

It's time to play everyone's favorite couples game show, Match Your Mate!

### CANVAS AND COCKTAILS

Create your own painting during this adult-only event. You'll learn to paint Disney style while enjoying 3 of Disney Cruise Line's most popular cocktails.

**Note** - There is a nominal fee for this event. Pre-booking required.



Senses Spa & Salon has a variety of seminars and fitness classes available throughout the cruise. Pamper yourself with therapeutic spa treatments of heat, steam, rain and water in luxurious and tranquil private rooms. Deck 9, Forward.

### BEVERAGE SEMINARS

Your Beverage team has a host of tastings and seminars to entertain and educate you. Stop by Promenade Lounge, Deck 3, Aft, 12:00 - 3:00 pm or Guest Services, Deck 3, Midship after today to pre-book these experiences (nominal fee applies).

- Stem to Stern Wine Tasting - Cognac Tasting -
- Whisky Tasting - Tequila & Margarita Tasting -

## YOUTH ACTIVITIES INFO & HIGHLIGHTS



### Dine & Play

As a convenience for those families dining at 8:30pm, our Youth Activities Counselors will be available to take registered children from Animators Palate, Lumiere's, and Rapunzel's Royal Table to join in the fun in Disney's Oceaneer Club and Disney's Oceaneer Lab. Collection times will differ depending on dining location and dates throughout the voyage. Please enquire with your Dining Room Servers or a member of the Youth Activities Team.

### Pre-School Fun

Disney's Oceaneer Club is reserved for only those between 3-5 years of age. This is a time for them to become acclimated to Disney's Oceaneer Club, make new friends and join in on a lot of fun-filled programs and activities. Please note after Pre-School Fun has concluded, Disney's Oceaneer Club will be open for Secured Programming for ages 3-12.

### Youth Activities Open House

Open House is an opportunity for all to come and participate in a variety of exciting activities and free time in the Oceaneer Club, Oceaneer Lab, Edge and Vibe throughout the cruise. During these times secured programming will still be offered in the other venue for those looking to check their children into care.

### Youth Activities Venue Tour

Come and take a tour of Disney's Oceaneer Club and Disney's Oceaneer Lab. This informative tour will give you the information you need to know about our exciting spaces and activities offered for children ages 3-12. Please see your Personal Navigator or the Navigator App for times.

## COAST TO COAST CHARACTER CAMP OUT



Pick up your tickets today to reserve your place for the Youth Activities Coast To Coast Campout. This overnight event will be happening on Thursday, September 13th at 9:30 pm and will be an opportunity to participate in activities throughout the evening and have a bedtime story read to your child in Disney's Oceaneer Lab by a very special visitor. These tickets are on a first come first serve basis, so book your tickets now at the Oceaneer Club or Oceaneer Lab, Deck 5 Midship to not miss out on this magical event.

# BUENA VISTA THEATRE

Deck 5, Midship

## FEATURE MOVIES THIS WEEK

### SUNDAY - DOVER, ENGLAND

6:00 pm	PG	A Wrinkle in Time
9:00 pm	PG	A Wrinkle in Time

### MONDAY - PORTLAND (STONEHENGE), ENGLAND

10:00 am	PG-13	Black Panther	3D
12:45 pm	PG	Coco	
3:15 pm	PG	Christopher Robin	
5:30 pm	PG-13	Solo: A Star Wars Story	
8:15 pm	PG-13	Solo: A Star Wars Story	
11:00 pm	PG	The Incredibles 2	3D

### TUESDAY - COBH (CORK), IRELAND

10:00 am	G	Homeward Bound: The Incredible Journey	
12:30 pm	PG-13	Solo: A Star Wars Story	
3:30 pm	PG-13	Ant-Man and The Wasp	3D
6:00 pm	PG	The Incredibles 2	3D
8:30 pm	PG	The Incredibles 2	3D
11:00 pm	PG	Christopher Robin	

### WEDNESDAY - DAY AT SEA

8:30 am	PG	The Incredibles 2	Open Captioning
11:00 am	PG-13	Black Panther	
1:30 pm	G	Beauty & The Beast (Classic)	
3:30 pm	PG-13	Solo: A Star Wars Story	3D
6:30 pm	PG	Christopher Robin	
8:45 pm	PG	Christopher Robin	
11:00 pm	PG-13	Avengers: Infinity War	3D

### THURSDAY - DAY AT SEA

8:30 am	PG	Christopher Robin	Open Captioning
10:30 am	PG	A Wrinkle in Time	3D
1:00 pm	PG-13	Ant-Man and The Wasp	
3:30 pm	PG-13	Avengers: Infinity War	
6:30 pm	PG	Coco	
8:45 pm	PG	Coco	
11:00 pm	PG-13	Solo: A Star Wars Story	3D

### FRIDAY - DAY AT SEA

8:30 am	G	Beauty & The Beast (Classic)	
10:15 am	PG-13	Solo: A Star Wars Story	
1:00 pm	G	Homeward Bound: The Incredible Journey	
3:00 pm	PG	The Incredibles 2	
5:30 pm	PG-13	Ant-Man and The Wasp	
8:15 pm	PG-13	Ant-Man and The Wasp	
10:45 pm	PG	Coco	3D

Subject to change.





# MORE TO ENJOY ONBOARD

## Connect@Sea

### BOOK ONBOARD AND SAVE!

Explore all the itineraries Disney Cruise Line offers - from the Caribbean and Bahamas to Alaska or Europe. Save when you book your next family adventure onboard! Visit the Disney Vacation Planning desk, Deck 4, Midship, for more information. Disney Vacation Planning tends to get busy on the last day of sailing. Don't miss the opportunity to plan your next Disney vacation.

### DISNEY VACATION CLUB® GROUP PREVIEW

Join us for our interactive group presentation to learn about taking magical vacations year after year! For more information, please see a Disney Vacation Club Cast Member on Deck 4, Midship, or call 7-2805 from your stateroom phone.

### PORT SHOPPING INFORMATION

Meet Saige, your Port Shopping Guide, for hints, tips and know how when it comes to shopping ashore this cruise! Saige has great recommendations for the whole family and will show you how to maximize your time in our ports of call with money saving tips! Visit Saige at the Port Shopping Desk, Deck 3, Midship.

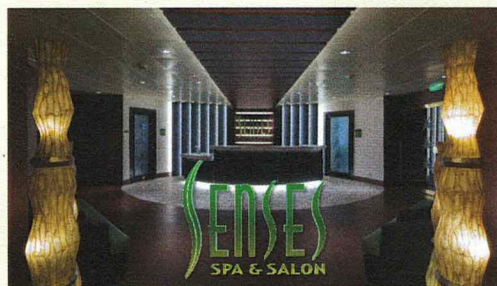
### FREE INTERNET EMBARKATION DAY SPECIAL

Sign up for a free 50 MB Internet package today and enjoy it throughout the cruise! This offer is only available from noon to midnight on the day your cruise begins. On your wireless device, simply find the "DCL-Guest" Wi-Fi Network, go to [www.dclguest.com](http://www.dclguest.com) to create an account, and get your free 50 MB of data to start sharing your memories even before you leave port! If you have any questions, ask our Connect@Sea Expert located at Deck 3, Midship. No purchase necessary. The free 50 MB package can only be used for the duration of the cruise. Only one free package per stateroom, but everyone can share it. Unused data from a package will not be reimbursed and it is non-transferable between voyages or ships.

### RELIGIOUS SERVICES

Groups who need a location to practice their faith may contact Guest Services for availability information.

## SENSES SPA & SALON



**DECK 9, FORWARD**  
Extension 7-1465

### RAINFOREST

Come enjoy our serenity lounge, with heated chairs, aromatherapy steam rooms and rainfall, misting showers.

Couples Cruise Pass - \$311 ~ Single Cruise Pass - \$210

### IONITHERMIE

Lose between 1 - 8 inches? Speed up your metabolism. Firm muscle tone. Improve appearance of cellulite. \$155/1 session or \$638/5 sessions.

### ONBOARD ACUPUNCTURE

Naturally effective for pain, arthritis, sea sickness, stress, digestion, weight loss, and much more. \$150/session or \$638/5 sessions.

### ELEMIS BIOTEC

8 different Facial treatments available based on your specific concerns or needs. Technology turbo charges the concept of touch. The clinically proven result is visibly healthy, nourished and energized skin.

### REJUVENATION SPA CONSULTATIONS

Ready to enhance your natural beauty? Book your free Facial Rejuvenation consultation with our Rejuvenation Doctor at the Senses Spa.

**AN 18% AUTO GRATUITY IS ADDED TO ALL SENSES SPA SERVICES.**

## MERCHANDISE SHOPPING



**DECK 4, FORWARD**

### TRANSATLANTIC SPECIAL DESIGN MERCHANDISE

Visit the onboard shops today to discover specially designed DCL Transatlantic merchandise, including tee's, a tumbler and more. Deck 4, Forward.

### HELPFUL SHOPPING TIP

While shopping onboard, you may collect your items from both stores before proceeding to checkout at any register. No need to have to wait in line in each store to pay for your items separately! Mickey's Mainsail and White Caps, Deck 4, Forward.

### VISTA GALLERY - MORE TO ENJOY WHILE ONBOARD

Welcome onboard, take a minute to stroll through the Vista Gallery on Deck 4, Midship and discover special themed Disney artwork. Find a selection of fine art, giclees, lithographs, and original Disney art.

### BIBBIDI BOBBIDI BOUTIQUE

A makeover fit for a princess! Fairy Godmothers-in-Training are ready with magic and pixie dust to give your Prince and Princess the transformation of a lifetime. Make your reservations by visiting Bibbidi Bobbidi Boutique, Deck 10, Forward, Port Side, or dialing extension 7-1492. Limited space available.

**DUE TO PORT REGULATIONS, WHEN THE SHIP IS DOCKED, THE STORES WILL REMAIN CLOSED.**

## SHUTTERS PHOTO GALLERY



**DECK 4, AFT**

### WELCOME ABOARD RAFFLE

Your embarkation photos will be available for viewing at 6:30pm. Visit Shutter's on Deck 4 Aft and drop your raffle coupon for a chance to win a 10 Digital Photo package with a \$149.95 value.

### OUR CRUISE PHOTOS DIGITAL!

Ask a friendly photographer about our Cruise digital Photos! And the incredible value of an All Inclusive digital photo package, which includes all of your stateroom's photos. Visit Shutter's today as supplies are limited. \*Terms and conditions apply.

### PRIVATE STUDIO PORTRAITURE

Book our exclusive and contemporary Private Studio experience today and capture these memories. No obligation to purchase. Black and White only.

### PHOTO BOOK

Turn your magical vacation memories into an impressive keepsake, a personal one of a kind Photo Book. Fill every page with memories of your cruise vacation. Orders close at 10:00 pm on the last day of the cruise.

**PHOTOS ARE AVAILABLE FOR VIEWING ON OUR INTERACTIVE PHOTO KIOSKS APPROXIMATELY FIVE HOURS AFTER BEING TAKEN AND ARE ONLY AVAILABLE FOR PURCHASE DURING THIS CRUISE.**

## IMPORTANT INFORMATION

**Security Notice/Unaccompanied Minor Ashore**  
All Guests (including children) who wish to disembark or embark the ship are required to present their Key to the World card at the gangway. A photo ID is also required for those Guests who are 18 years of age or older. Guests under the age of 18 are required to have a Parent, Guardian or other responsible adult complete the "Traveling with Minors" section of "My Online Check-In" prior to sailing or sign an authorization form at the Guest Services Desk if they wish to go ashore unaccompanied or with any adult from another stateroom.

**Insect Repellent Advisory**  
The Centers for Disease Control and Prevention recommends wearing long-sleeved shirts and pants along with insect repellent to protect against mosquito bites and related illnesses when going ashore. Complimentary insect repellent is available on the pier as you exit the ship. Insect repellent is also available for purchase in White Caps. When using both sunscreen and insect repellent, use sunscreen first and apply insect repellent on top of sunscreen.

**Corridor Quiet Hours**  
As a courtesy to all our Guests, please recognize quiet hallway hours from 10:00 pm til 8:00 am.

**No Reserved Seats Policy**  
As a courtesy to all our Guests, we kindly advise that the saving of seats is not permitted in the Walt Disney Theatre, and the saving of the sun loungers is not permitted on Deck 9 and 10. Items left unattended will be returned to lost and found at Guest Services, Deck 3 Midship.

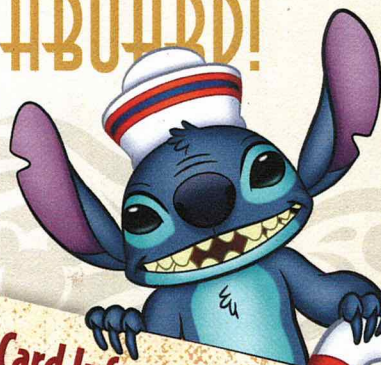
**Cold and Flu Reminder**  
Please wash hands frequently and thoroughly, particularly before meals. Contact the Health Center by dialing 7-1927, should anyone in your party become ill.

**Inclement Weather**  
For the safety of all Guests, outdoor events may be changed due to unforeseen weather conditions.

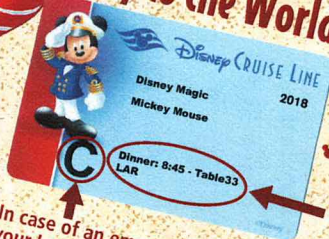
**Smoking**  
For the comfort of our Guests, the following areas are designated as smoking areas:  
"Deck 9, Forward, Port Side by "Deck 4, Starboard side from 6:00 pm to 6:00 am only (all of Deck 4 is non-smoking from 6:00 am to 6:00 pm)  
Smoking is prohibited inside all Guest staterooms and on stateroom verandahs. Guests found smoking in their staterooms or on their verandahs will be charged a \$250 stateroom recovery fee. Electronic cigarettes may only be used in designated smoking areas.

**Walt Disney Theatre**  
Theatrical performances may use artificial fog, strobe lights, pyrotechnics and other special effects. For the safety of our performers and the comfort of those around you, the use of any photography, video recording device or any electronic equipment is prohibited.  
**Verandah Safety**  
Please do not leave any personal items on your verandah that may be blown overboard or present a fire hazard if left unattended. Do not throw anything over the ship's side. Guests should not sit, lean or climb on the railing or leave children unattended on the verandah. Do not open the verandah and stateroom doors simultaneously as this may create a wind effect and could cause the doors to slam unexpectedly.





# Key to the World Card Information



In case of an emergency,  
your lettered Assembly  
Station is indicated here.

- Your dining time and table number for the cruise are located here.
- Dining locations and by letters.

Dining locations and rotation are indicated by letters under your dinner time.

- L - Lumiere's, Deck 3, Midship
- A - Animator's Palate, Deck 4, Aft
- R - Rapunzel's Royal Table, Deck 3, Aft

Afternoon	2:00	2:15	2:30	2:45	3:00	3:15	3:30	3:45	4:00	4:15	4:30	4:45	5:00	5:15	5:30	5:45	6:00	6:15	6:30	6:45	7:00
FUNNEL VISION			Poolside Jams with Cruise Staff DJ Deck 9 Stage										Adventures Away Deck 9 Stage		Brave (PG)  Open Captioning Funnel Vision						
BUENA VISTA THEATRE																					
CHARACTERS																					
FUN FOR ALL AGES	Walking Ship Tour Preludes		Walking Ship Tour Preludes		Walking Ship Tour Preludes												A Wrinkle in Time (PG) Duration: 1 Hour 49 Minutes				
			Poolside Jams with Cruise Staff DJ Deck 9 Stage										Pluto DK4 Mid (S)		Minnie DK4 Mid (S)						
ADULTS							Spa Raffle Senses Spa								Donald Lobby Atrium (P)						
	Spa Open House Senses Spa & Salon														Smooth Sounds with Royal Duo Lobby Atrium						
VIBE 14-17 YEARS OLD	Youth Activities Open House & Registration																				
EDGE 11-14 YEARS OLD	Youth Activities Open House & Registration																				
OCEANEER LAB 3-12 YEARS OLD	Open House & Registration				Youth Activities Tour		Open House								Game Challenge		Meet Your Counselors				
OCEANEER CLUB 3-12 YEARS OLD	Open House & Registration				Youth Activities Tour		Open House								Once Upon a Time		Open House		Pre-School Fun (3-5 Years Old)		

**Mandatory  
Guest Assembly Drill  
4:15 pm**  
(All Guests must attend)

All ship services will be  
suspended during this time.

Refer to the posted drill  
instructions on the back of  
your stateroom door prior to  
heading to Deck 4. Please bring  
your Key to the World Card.

You will not need your  
life jacket for the  
Guest Assembly Drill.

↑  
Your Assembly Station is indicated  
on your Key To The World card.



Evening	7:15	7:30	7:45	8:00	8:15	8:30	8:45	9:00	9:15	9:30	9:45	10:00	10:15	10:30	10:45	11:00	11:15	11:30	11:45	12:00	12:15
FUNNEL VISION	<div>Mulan (G) -  Open Captioning Funnel Vision</div> <div>Finding Dory (PG) -  Open Captioning Funnel Vision</div> <div>Ant-Man (PG-13) Funnel Vision</div>																				
BUENA VISTA THEATRE	<div>A Wrinkle in Time (PG) Duration: 1 Hour 49 Minutes</div>																				
CHARACTERS	<div>Minnie DK4 Mid (S)</div> <div>Mickey DK4 Mid (S)</div> <div>Rapunzel Lobby Atrium (P)</div> <div>Rapunzel Lobby Atrium (P)</div> <div>Ariel Lobby Atrium (P)</div> <div>Donald DK4 Mid (S)</div> <div>Mickey DK4 Mid (S)</div>																				
FUN FOR ALL AGES	<div>Gameshow: The Wheel D Lounge</div> <div> </div> <div> </div> <div> </div> <div> </div> <div>Loop Sounds with Daria &amp; Roberto Promenade Lounge</div> <div>Smooth Sounds with Daria &amp; Roberto Promenade Lounge</div>																				
ADULTS	<div>Team Trivia O' Gills Pub</div> <div>Songs of Today with Aaron Lotzow Keys</div> <div>Music &amp; Martinis with Sean Flowers Keys</div> <div>Cruise Staff DJ Fathoms</div> <div>Intuition Fathoms</div> <div>Majority Rules Fathoms</div> <div>Cruise Staff DJ Fathoms</div> <div>Late Night Piano Keys</div>																				
VIBE 14-17 YEARS OLD	Cards Tournament																				
EDGE 11-14 YEARS OLD	Wii Challenge																				
CEANEER LAB 3-12 YEARS OLD	Explore the Lab!																				
CEANEER CLUB 3-12 YEARS OLD	Meet Your Counselors																				

**DRINK**  
**OF THE DAY**

Fold along the dotted lines and take me with you  
so you don't miss any of the fun!

**CH** **YOUTH ACTIVITIES OPEN HOUSE**  
A non-secured program with activities for families, adults and children to enjoy together.



SUNDAY, SEPTEMBER 9, 2018 - DOVER, ENGLAND



**Be our Guest!**

WELCOME ABOARD SHOW

**WALT DISNEY THEATRE**

Deck 4, Forward  
6:30 pm & 8:45 pm

As a courtesy to all Guests, we kindly advise that the saving of seats is **not** permitted in the Walt Disney Theatre.

Assistance is available at the entrance to the Walt Disney Theatre 30 minutes prior to show time.

## Character Meet & Greet Ticket Distribution

**Port Adventures Desk, Deck 3, Midship - 12:00 pm - 2:30 pm**

For Guests who did not reserve meet and greets online, a limited number of tickets are available today to meet some of your favorite Disney friends.

**Princess Gathering ~ Frozen Gathering ~ Character Breakfast**

Tickets are required for each of these meet and greets.

Space is limited.

## Character Appearances

### ADVENTURES AWAY

Deck 9 Stage - 4:45 pm

### ARIEL

Lobby Atrium (P) - 10:15 pm

### PLUTO

DK4 Mid (S) - 5:30 pm

### DONALD DUCK

Lobby Atrium (P) - 5:45 pm

DK4 Mid (S) - 9:45 pm

### MINNIE MOUSE

DK4 Mid (S)

6:00 pm & 7:30 pm

### RAPUNZEL

Lobby Atrium (P)

7:45 pm & 9:45 pm

### MICKY MOUSE

DK4 Mid (S)

8:00 pm & 10:15 pm



(S) Starboard Side - (P) Port Side

For detailed character appearances, refer to the character line on your Navigator, the Disney Cruise Line App, or the digital character board in the Lobby Atrium.

Lines close 15 minutes after advertised start time.

## SHIP DIRECTORY

### YOUTH ACTIVITIES

DISNEY'S OCEANEER CLUB	DECK 5, MID	12:00 PM - 4:00 PM 5:00 PM - 12:00 AM
DISNEY'S OCEANEER LAB	DECK 5, MID	12:00 PM - 4:00 PM 5:00 PM - 12:00 AM
EDGE	DECK 9, MID	12:00 PM - 4:00 PM 5:00 PM - 12:00 AM
IT'S A SMALL WORLD NURSERY	DECK 5, AFT	12:00 PM - 4:00 PM 5:00 PM - 11:00 PM
VIBE	DECK 10, MID	12:00 PM - 4:00 PM 5:00 PM - 12:00 AM

### POOLS

\*Children under 12 years of age must have adult supervision in all pools.

AQUADUNK	DECK 10, MID	12:00 PM - 3:00 PM 6:00 PM - 8:00 PM
AQUALAB	DECK 9, AFT	12:00 PM - 3:30 PM 4:30 PM - 8:00 PM
GOOFY'S POOL	DECK 9, MID	12:00 PM - 3:30 PM 6:00 PM - 10:00 PM
NEPHEWS' SPLASH ZONE	DECK 9, AFT	12:00 PM - 3:30 PM 4:30 PM - 6:00 PM
QUIET COVE POOL (18+)	DECK 9, FWD	12:00 PM - 11:00 PM
TWIST 'N' SPOUT	DECK 9, AFT	12:00 PM - 3:00 PM 4:30 PM - 8:00 PM

Please note, "selfie sticks" are not permitted in any aquatic areas.

Complimentary pool vests are available for children to use in the pools onboard.  
They are located on the pool deck.

### RECREATION

PORT ADVENTURES DESK	DECK 3, MID	12:00 PM - 3:30 PM 4:30 PM - 6:00 PM 7:15 PM - 9:00 PM
SENSES FITNESS CENTER (18+)	DECK 9, FWD	11:30 AM - 10:00 PM
WIDE WORLD OF SPORTS DECK	DECK 10, FWD	24 HOURS

### GENERAL INFORMATION

BUENA VISTA THEATRE	DECK 5, AFT	SHOWTIMES
CONNECT@SEA DESK	DECK 3, AFT	1:00 PM - 4:00 PM 7:00 PM - 10:00 PM
DISNEY VACATION CLUB DESK	DECK 4, MID	5:00 PM - 7:00 PM 9:00 PM - 10:00 PM
DISNEY VACATION PLANNING	DECK 4, MID	7:30 PM - 8:30 PM
FUNNEL VISION	DECK 9, MID	SHOWTIMES
GUEST SERVICES	DECK 3, MID	24 HOURS
HAIR BRAIDING	DECK 9, MID	
MEDICAL HEALTH CENTER	DECK 1, FWD	4:30 PM - 7:00 PM
PORT SHOPPING DESK	DECK 3, MID	
PRELUDES	DECK 4, FWD	SHOWTIMES
SENSES SPA AND SALON	DECK 9, FWD	11:30 AM - 10:00 PM
SHUTTERS PHOTO GALLERY	DECK 4, AFT	6:00 PM - 10:30 PM

### SHOPPING

BIBBIDI BOBBIDI BOUTIQUE	DECK 10, FWD	12:00 PM - 3:00 PM 5:00 PM - 9:00 PM
MICKY'S MAINSAIL	DECK 4, FWD	6:30 PM - 11:00 PM
SEA TREASURES	DECK 3, FWD	6:30 PM - 11:00 PM
THE CROWN JEWELRY	DECK 4, AFT	6:30 PM - 11:00 PM
VISTA GALLERY	DECK 4, MID	6:30 PM - 11:00 PM
WHITE CAPS	DECK 4, FWD	6:30 PM - 11:00 PM

DUE TO PORT REGULATIONS, WHEN THE SHIP IS DOCKED, THE STORES MUST REMAIN CLOSED.

**EVENING ATTIRE** Cruise Casual

**WEATHER FORECAST** Today: Partly Cloudy  
High: 66°F/19°C

## DINING & LOUNGES

### LUNCH

CABANAS	DECK 9, AFT	11:45 AM - 3:15 PM
DAISY'S DE LITES	DECK 9, AFT	12:00 PM - 3:30 PM 4:15 PM - 6:00 PM
DUCK-IN DINER	DECK 9, AFT	12:00 PM - 3:30 PM 4:15 PM - 6:00 PM
LUMIERE'S	DECK 3, MID	11:45 AM - 1:45 PM
PINOCCHIO'S PIZZERIA	DECK 9, MID	12:00 PM - 3:30 PM 4:15 PM - 6:00 PM

### DINNER

ANIMATOR'S PALATE	DECK 4, AFT	6:00 PM & 8:30 PM
DUCK-IN DINER	DECK 9, AFT	6:00 PM - 10:00 PM
LUMIERE'S	DECK 3, MID	6:00 PM & 8:30 PM
PALO (18+) (FOR RESERVATIONS CALL 7-6843)	DECK 10, AFT	6:00 PM - 8:30 PM
RAPUNZEL'S ROYAL TABLE	DECK 3, AFT	6:00 PM & 8:30 PM

### LATE NIGHT SNACKS

O'GILLS PUB	DECK 3, FWD	10:45 PM - 11:30 PM
PINOCCHIO'S PIZZERIA	DECK 9, MID	9:30 PM - 12:00 AM
PROMENADE LOUNGE	DECK 3, AFT	10:45 PM - 11:30 PM

### ADDED FEATURES

EYE SCREAM	DECK 9, AFT	12:00 PM - 3:30 PM 4:15 PM - 11:00 PM
BEVERAGE STATION	DECK 9, AFT	24 HOURS
ROOM SERVICE	DIAL 7-4330	OPENS AT 1:30 PM

### ENTERTAINMENT - LOUNGES - BARS

Adults must be 21 and older to consume alcoholic beverages.

AFTER HOURS	DECK 3, FWD	(AFTER 9:00 PM. ADULTS ONLY)
COVE CAFE (18+)	DECK 9, MID	11:45 AM - 12:00 AM
D LOUNGE	DECK 4, MID	SHOWTIMES
FATHOMS (18+ AFTER 9:00 PM)	DECK 3, FWD	7:30 PM - 8:30 PM 9:30 PM - 2:00 AM
FROZONE TREATS	DECK 9, AFT	11:45 AM - 6:00 PM
KEYS (18+)	DECK 3, FWD	6:00 PM - 12:30 AM
O'GILLS PUB (18+ AFTER 9:00 PM)	DECK 3, FWD	11:45 AM - 12:00 AM
PRELUDES	DECK 4, FWD	SHOWTIMES
PROMENADE LOUNGE	DECK 3, AFT	11:45 AM - 12:00 AM
PINOCCHIO'S PIZZERIA	DECK 9, MID	11:45 AM - 12:00 AM
SIGNALS (18+)	DECK 9, FWD	11:45 AM - 10:00 PM

Public Health Advisory: Consuming raw or undercooked meats, poultry, seafood, shellfish, or eggs may increase your risk for foodborne illness, especially if you have certain medical condition.



Explore and more with our carefully selected Port Adventures. Pass by the Port Adventures Desk, Deck 3, Midship to find out more.

## IMPORTANT NUMBERS

Fire/Security:	7-3001
Medical EMERGENCY:	7-3000
Health Center:	7-1927