

VOYAGE

NAVIGATOR

SATURDAY
SEPTEMBER 8, 2018

TO

SATURDAY
SEPTEMBER 15, 2018

CRUISE HIGHLIGHTS

SATURDAY

PORT CANAVERAL
Port Departure: 5:00 pm
All Aboard: 3:45 pm
Attire: Cruise Casual



SHOWTIME: TAYLOR MASON
Walt Disney Theatre
6:15 pm & 8:30 pm

SUNDAY

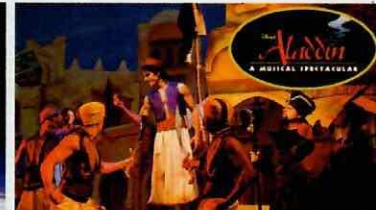
DAY AT SEA
Attire: Formal



DISNEY WISHES
Walt Disney Theatre
6:15 pm & 8:30 pm

MONDAY

DAY AT SEA
Attire: Cruise Casual



DISNEY'S ALADDIN
Walt Disney Theatre
6:15 pm & 8:30 pm

TUESDAY

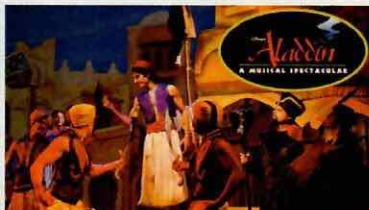
TORTOLA
All Ashore: 7:30 am
All Aboard: 5:45 pm
Attire: Pirate or Cruise Casual



SHOWTIME: MICHAEL HOLLY
Walt Disney Theatre
6:15 pm & 8:30 pm

WEDNESDAY

ST. THOMAS
All Ashore: 7:45 am
All Aboard: 4:00 pm
Attire: Cruise Casual



DISNEY'S ALADDIN
Walt Disney Theatre
7:15 pm

THURSDAY

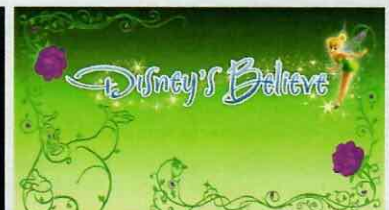
DAY AT SEA
Attire: Optional Dress Up or
Halloween



THE NIGHTMARE BEFORE CHRISTMAS
Walt Disney Theatre
2:00 pm, 6:00 pm & 8:30 pm

FRIDAY

DISNEY CASTAWAY CAY
All Ashore: 9:30 am
All Aboard: 4:45 pm
Attire: Cruise Casual



DISNEY'S BELIEVE
Walt Disney Theatre
6:15 pm & 8:30 pm

Subject to change.

WELCOME ABOARD!

YOUR STATEROOM & LUGGAGE

Staterooms will be ready at 1:30 pm. To allow your Stateroom Host/ess time to prepare your room, please do not remove the blue stanchion straps. Stateroom hosts will deliver luggage throughout the day until 5:30 pm.

STATEROOMS WITH BUNK BEDS

Bunk beds are recessed into the ceiling and will be prepared during evening turndown service by your Stateroom Host/ess.

STATEROOM SAFE

Each stateroom is equipped with a secured storage safe. Instructions for use are located on the safe.

TO CHANGE DINING ASSIGNMENT

Requests for different seating times will be taken today:

- 12:30 pm - 3:00 pm; Book in Enchanted Garden, Deck 2, Midship
- 3:00 pm - 5:00 pm; please dial 7-1831, 7-1832, or 7-1833

REMY & PALO DINING RESERVATIONS

Reservations are required and will be taken on a first come basis today:

- 12:30 pm - 3:00 pm Enchanted Garden, Palo & Remy
- 3:00 - 5:00 pm Please leave a voice mail at 7-9735 for Palo or 7-9734 for Remy.

Please dial 7-9734 for Remy or 7-9735 for Palo for more information. Cover charge applicable.

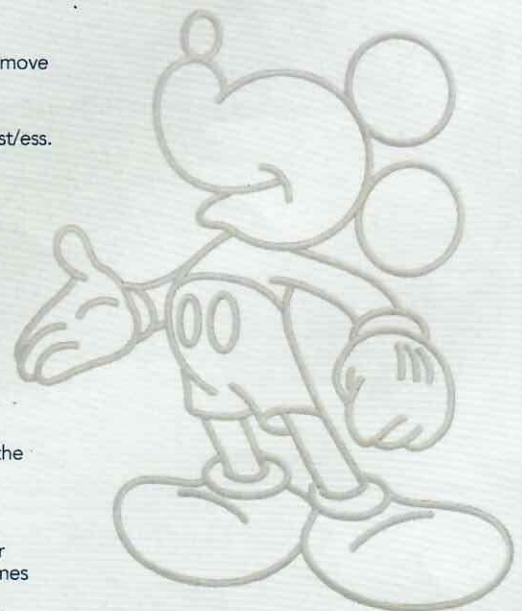
Adult Exclusive Dining Opportunity! Guests are invited to make 2 dinner reservations at our two adult-exclusive restaurants, Palo & Remy. This includes one reservation on embarkation evening and one more on another night of the cruise. Reservations are subject to availability and a specialty dining charge will apply.

DINNER

5:45 pm - First seating 8:15 pm - Second seating

Please check your Key To The World Card or dining tickets for details of your dining rotation, and bring them to your specific dining location. There is no need to wait in line prior to dinner. Dining Rooms open at designated seating times and your table is reserved each night of your cruise.

A = Animator's Palate, Deck 3, Aft E = Enchanted Garden, Deck 2, Midship R = Royal Court, Deck 3, Midship



Disney CRUISE LINE
PORT ADVENTURES

Create the most memorable experiences during your Disney Cruise Line vacation with Port Adventures! Our Port Adventures are designed for you to see the best our ports have to offer. Stop by the Port Adventures Desk, Deck 5, Midship where our friendly team will be happy to assist you plan your adventure!
There is an adventure for everyone on your Disney Fantasy® vacation.

IMPORTANT NUMBERS

Fire/Security: 7-3001

Medical Emergency: 7-3000

Health Center: 7-1927

ADULT ACTIVITY HIGHLIGHTS



1820 SOCIETY (GUESTS 18-20 YEARS ONLY)

1820 Society is an exclusive option for young adult guests. Come meet fellow guests and learn about the excellent activities that the Fantasy offers to create the perfect cruise experience.



80'S MUSIC CHALLENGE

"Moon Walk" back to the 80's as we put your musical knowledge of the decade to the test.

ART OF THE THEME SHOW SHIP TOUR

Join us for a guided tour highlighting the design, Imagineering and artistry of the ship. This tour is reserved for Guests 18 and over.

CRUISIN' SOLO GATHERING

Single, single parent or just traveling alone? Join your Cruise Staff for an informal gathering.



MATCH YOUR MATE

It's time to play everyone's favorite couples game show, Match Your Mate!



Senses Spa & Salon has a variety of seminars and fitness classes available throughout the cruise. Pamper yourself with therapeutic spa treatments of heat, steam, rain and water in luxurious and tranquil private rooms. Deck 11, Forward.

BEVERAGE SEMINARS

Your Beverage team has a host of tastings and seminars to entertain and educate you. Stop by La Piazza, Deck 4, Aft to pre-book these experiences (nominal fee applies).

Mixology - Stem to Stern Wine Tasting - Martini Tasting - Champagne Tasting - Beer Tasting - Cognac Tasting - Whisky Tasting - Amari Tasting - Tequila & Margarita Tasting - Chocolate & Liquor Tasting - Rum Tasting

FEATURED VARIETY ACT THIS VOYAGE



THE VENTRILOQUISM & COMEDY OF TAYLOR MASON

Combining music, ventriloquism, comedy and audience participation sounds like a musical theater production, but it's really one man! Taylor Mason makes people of all ages laugh and laugh hard. His quick wit, flawless delivery and polished material make him a hit with Guests of all ages.



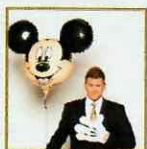
THE PHYSICAL COMEDY OF MICHAEL HOLLY

Michael Holly began his performing days on the cobbled streets of Fantasyland at Disneyland in 1985 and since then has been the comedy star of a dozen Las Vegas Shows including Vegas-The Show at Planet Hollywood, V-The Ultimate Variety Show at the Venetian, Les Folies Bergere at The Tropicana and has the highest rated one man comedy variety show in Las Vegas, his own, "Michael Holly's Off The Wall Comedy Hour".



THE MAGIC, COMEDY AND BALLOONS OF JOHN CASSIDY

John Cassidy's bizarre antics have earned him widespread acclaim as one of the most original comedians performing today. Starting his career as a magician and balloon sculptor for children's birthday parties, John began noticing that the parents were also finding his act to be especially hilarious and ingenious. The world of magic has taken a special shine to John and he is now among the most requested acts at various conventions and seminars throughout the world, and has been named one of the funniest comedy magicians working today by MAGIC Magazine.



THE COMEDY & HYPNOSIS OF DALE K

Hollywood's fabricated theory of hypnosis usually involves lightning bolts, zombie like trances and humans clucking like chickens. During his performances, Dale challenges these theories proving that hypnosis is simply the power of suggestion that consists of mind motivation rather than mind control. Just one of the many reasons why Dale K is a popular must see favorite with universal appeal and a yearly tour schedule of almost 200 cities worldwide.

CLUB DJ THIS VOYAGE

CLUB DJ AKSHEN

Renowned for his distinctive turntable skills, Jay Valdez, better known as Akshen, is one of the best in the business. His love for the "Perfect Beat" has helped him develop his very own, versatile style. Akshen has been a music enthusiast since his teen-age years and mastered the art of musical fusion. His engaging stage presence and a knack for sensing the musical pulse of his audience, guarantees an unforgettable experience. Through constant experimentation, Akshen continues to push the boundaries of his craft.

FUN FOR ALL AGES HIGHLIGHTS



ANYONE CAN COOK

Every Chef has a specialty, and ours is no exception. Get a taste of perfection with each day's recipe.



BUCCANEER BLAST FIREWORKS

What's a pirate party without some fireworks to remind the other ships who be ruling the oceans blue?



DISNEY VACATION CLUB GROUP PREVIEW

Want to learn more about taking magical vacations year after year? Please see a Disney Vacation Club Cast Member on Deck 4, Midship, or call 7-2805 from your stateroom phone for more information about our interactive group presentation.



FAMILY TALENT SHOW

Let your family take center stage and strut their stuff. Everyone has a talent, it's time to show off yours! Pre-register at Guest Services.



JACK-JACK'S INCREDIBLE DIAPER DASH

Calling all baby cruisers! It's time to take to the mat to see who's the fastest crawler of the seven seas! Register your baby 15 minutes prior to the big race.



JACKPOT BINGO

CASH prizes and raffle prizes to be won in our family friendly Bingo sessions with your Cruise Staff. Those under the age of 18 must be accompanied by an adult to play.



MICKEY'S PIRATES IN THE CARIBBEAN

It's a Pirate Celebration, me hearties! Come experience all the pirate fun alongside Captain Mickey Mouse and his famous pirate crew. Play, dance and acquire all the pirate skills needed to become an official member of Mickey's Pirate Crew! (Weather Permitting)



MIRROR MIRROR

Join the Magic Mirror in the fairest game show of them all, Mirror, Mirror. There's trivia, singing and even a relay race! Hi Ho, Hi Ho, it's off to play we go!



SEA YA REAL SOON

Mickey and Minnie along with the rest of the Walt Disney Characters invite you to join them in the ship's atrium for Sea Ya Real Soon. You won't want to miss this very special farewell presentation.

HALLOWEEN ON THE HIGH SEAS HOLIDAY HIGHLIGHTS



HALLOWEEN ISN'T JUST FOR KIDS (18+)

The trendy dance club for adults becomes the hangout for the dark side of Disney. Flaunt your wild side and compete in our adults only costume contest. We hope to see you scaring up some fun on the dance floor. Trick or Treat isn't just for Kids...anymore.



HAUNTED STORIES OF THE SEA

Join our Sea Captain for the Halloween tradition of telling ghostly tales of the strange, bizarre and just plain scary that will leave even the bravest of souls with a chill.



MICKEY'S MOUSE-QUERADE PARTY

Enjoy a fun trick or treat "Mouse-Querade" featuring music, games, a visit from some of your favorite Disney Pals in their Halloween costumes and of course treats.



THE PUMPKIN TREE

Do you know why we celebrate Halloween or carve jack-o-lanterns? Join the Caretaker at the Pumpkin Tree, and hear some fun stories and customs of Halloween. Don't forget your pumpkin seed, we promise a ghostly good time.



TIM BURTON'S THE NIGHTMARE BEFORE CHRISTMAS SING AND SCREAM

You're invited to a special presentation of Tim Burton's popular classic, presented in 3-D. Featuring state-of-the-art projection, sound and in-theatre effects, you become part of the experience, as you sing and scream along. You never know who may show up.

YOUTH ACTIVITIES INFO & HIGHLIGHTS



Dine & Play

A convenience for families, during your dinner, our Youth Activities counselors will be available at 6:45 pm or 9:15 pm at the entrance of Royal Court and Enchanted Garden and at 7:00 pm or 9:30 pm at the Animator's Palate dining room to bring registered children to join the fun in the Youth Activities areas.

Pre-School Fun

Disney's Oceaneer Club is reserved for only those between 3-5 years of age. This is a time for them to become acclimated to Disney's Oceaneer Club, make new friends and join in on a lot of fun-filled programs and activities. Please note after Pre-School Fun has concluded, Disney's Oceaneer Club will be open for Secured Programming for ages 3-12.

Youth Activities Open House

Open House is an opportunity for all to come and participate in a variety of exciting activities and free time in the Oceaneer Club, Oceaneer Lab, Edge and Vibe throughout the cruise. During these times secured programming will still be offered in the other venue for those looking to check their children into care.



3 - 12 years old

DOCTOR STRANGE

Unravel the mysteries of the Mystic Arts from none other than Doctor Strange.

DOC MCSTUFFIN'S TOY HOSPITAL

Help Doc McStuffins diagnose and fix broken toys as you become a Jr. Toy Doctor at McStuffinsville Toy Hospital.

FORCE TRAINING

Learn the ways of the Force and take on the First Order.

JOIN THE LION GUARD

Harness your inner animal and find out if you have what it takes to join the Lion Guard!



3 - 12 years old

PLUTO'S PAJAMA PARTY

Bring the little ones in their pajamas but there will be anything but sleep when Pluto and friends host the ultimate slumber party!

GET THE HOOK

A villainous villain has stolen Captain Hook's prized golden hook. Become a member of the Top Deck Detective Agency and help solve the clues to retrieve Hook's hook.

PISTON CUP

It's Dinoco time and you're part of the pit crew! Design your own race car and see if you've got what it takes to end up in the winner's circle!

DREAM BIG, PRINCESS

Disney Princesses make their dreams come true. So can you! Join us as we find inspiration and motivation from everyone's favorite royalty and their friends. It's time to Dream Big!



11 - 14 years old

BRAINS AND BRAWNS

You will compete against each other to solve clues, take part in physical challenges, and reach the finish first.

A PIRATE'S LIFE FOR ME

Calling all Pirates, we be! If ye have an adventurous spirit or pirate savvy, come spin the "Wheel of Destiny" for a treasure trove of fun be ripe for the takin' in this action packed pirate game show.



14 - 17 years old

THAT'S HILARIOUS

Ever wanted to show off your comedy skills? Then be a part of the cast for the crazy improv show "That's Hilarious" and put on a live show for your friends.

DIVE INTO DJ'ING

Hop on the turn tables and learn to scratch with our Guest DJ.

BUENA VISTA THEATRE

Deck 4 & 5, Midship

FEATURE MOVIES THIS VOYAGE

SATURDAY - PORT CANAVERAL

5:15 pm	PG-13	Solo: A Star Wars Story	
8:15 pm	PG-13	Solo: A Star Wars Story	cc Open Captioning
11:00 pm	PG	Coco	

SUNDAY - DAY AT SEA

8:30 am	PG	Family Movie Fun Time: Coco	cc Open Captioning
12:30 pm	PG	A Wrinkle in Time	
2:45 pm	PG-13	Ant-Man and The Wasp	3D
5:15 pm	PG-13	Avengers: Infinity War	
8:15 pm	PG-13	Avengers: Infinity War	
11:15 pm	PG-13	Black Panther	3D

MONDAY - DAY AT SEA

8:30 am	PG	The Incredibles 2	
11:00 am	PG-13	Ant-Man and The Wasp	
1:45 pm	PG	Christopher Robin	cc Open Captioning
5:30 pm	PG	Christopher Robin	
8:15 pm	PG	Christopher Robin	
10:30 pm	PG-13	Avengers: Infinity War	

TUESDAY - TORTOLA

8:30 am	PG	A Wrinkle in Time	cc Open Captioning
11:00 am	PG-13	Black Panther	
2:00 pm	PG-13	Avengers: Infinity War	3D
5:15 pm	PG-13	Ant-Man and The Wasp	
8:00 pm	PG-13	Ant-Man and The Wasp	
10:45 pm	PG-13	Solo: A Star Wars Story	

WEDNESDAY - ST. THOMAS

9:30 am	PG	The Incredibles 2	3D
12:00 pm	PG-13	Avengers: Infinity War	cc Open Captioning
3:00 pm	PG	Coco	3D
5:15 pm	PG-13	Black Panther	
8:15 pm	PG-13	Black Panther	
11:00 pm	PG-13	Ant-Man and The Wasp	

THURSDAY - DAY AT SEA

8:30 am	PG	Family Movie Fun Time: Christopher Robin	cc Open Captioning
11:00 am	PG-13	Solo: A Star Wars Story	3D
1:45 pm	PG	Christopher Robin	
5:30 pm	PG	The Incredibles 2	
8:15 pm	PG	The Incredibles 2	cc Open Captioning
10:45 pm	PG	Christopher Robin	

FRIDAY - DISNEY CASTAWAY CAY

8:30 am	PG	Family Movie Fun Time: The Incredibles 2	cc Open Captioning
11:15 am	PG-13	Black Panther	cc Open Captioning
2:30 pm	PG	Coco	
5:15 pm	PG-13	Ant-Man and The Wasp	
8:00 pm	PG-13	Ant-Man and The Wasp	
11:00 pm	PG	The Incredibles 2	3D

Subject to change.

MORE TO ENJOY ONBOARD



NEW FALL 2019 ITINERARIES

New Fall 2019 Itineraries announced! Set sail for spectacular ports including Bermuda and Quebec City, Canada. Disney Cruise Line will continue sailing to sun-soaked destinations on Bahamian, Caribbean and Baja cruises! Visit the Disney Vacation Planning, Deck 4, Midship for more information. Disney Vacation Planning tends to get busy on the last day of sailing. Don't miss the opportunity to plan your next Disney vacation.



DISNEY VACATION CLUB® MEMBER CELEBRATION

Join us as we welcome you onboard with a fun, interactive event where you can catch the latest updates at Disney Vacation Club! Please see a Disney Vacation Club Cast Member on Deck 4, Midship or call 7-2805 from your stateroom phone for more information.



PORT SHOPPING INFORMATION

Meet Kyle & Hannah, your Port Shopping Guides at the Port Shopping Desk, Deck 4, Midship between 7:30 pm - 8:30 pm. Tonight, collect your FREE cruise ship charm and receive a bonus raffle ticket for tomorrow's Port Shopping Talk in the Buena Vista Theatre. Tune into channel 9 and don't miss tomorrow's event covering Tortola & St. Thomas. Buena Vista Theatre, Deck 4, Midship at 11:15 am.

Connect@Sea

FREE INTERNET EMBARKATION DAY SPECIAL

Sign up for a free 50 MB Internet package today and enjoy it throughout the cruise! This offer is only available from noon to midnight on the day your cruise begins. On your wireless device, simply find the "DCL-Guest" Wi-Fi Network, go to www.dclguest.com to create an account, and get your free 50 MB of data to start sharing your memories even before you leave port! If you have any questions, ask our Connect@Sea Expert located at Deck 4, Midship. No purchase necessary. The free 50 MB package can only be used for the duration of the cruise. Only one free package per stateroom, but everyone can share it. Unused data from a package will not be reimbursed and it is non-transferable between voyages or ships.

RELIGIOUS SERVICES

Groups who need a location to practice their faith may contact Guest Services for availability information.

SENSES SPA & SALON



DECK 11, FORWARD
Extension 7-1465

RAINFOREST

Come enjoy our serenity lounge, with heated chairs, dry sauna, aromatherapy steam rooms and rainfall, misting showers.

\$193 for couples and \$144 for singles.

COOLSCULPTING

Fear No Mirror with CoolSculpting. The premier non-invasive fat reduction and body contouring treatment. Eliminate fat and sculpt your body with a single treatment. Complimentary Consultations available now in the Rejuvenation Spa at Senses Spa & Salon.

ONBOARD ACUPUNCTURE

Naturally effective for pain, arthritis, sea sickness, stress, digestion, weight loss, and much more. \$150/session or \$550/5 sessions.

TRIPLE YOUR INDULGENCE

We recommend you enrich your day spa experience by choosing three of your favorite signature treatments and receive:

- 10% off your 1st signature treatment
- 20% off your 2nd signature treatment
- 30% off your 3rd signature treatment

AN 18% AUTO GRATUITY IS ADDED TO ALL SENSES SPA SERVICES.

MERCHANDISE SHOPPING



DECK 3, FORWARD

SOPHIA FIORI DIAMOND TRUNK SHOW

Sophia Fiori is known for their exceptional and high quality colored diamonds. Your Sophia Fiori Jewelry Stylist and diamond industry expert has brought onboard over \$1 Million in Diamonds and Tanzanite jewelry at all price points from \$500 up to extravagant connoisseur pieces. White Caps, Deck 3, Forward.

TIFFANY & CO. GRAND UNVEILING

Be a part of history as Tiffany & Co. unveils their very first Disney Cruise Line inspired jewelry! Visit Tiffany & Co. for details on how you can own a piece of this iconic moment.

BIBBIDI BOBBIDI BOUTIQUE

A makeover fit for a princess! Fairy Godmothers-in-Training are ready with magic and pixie dust to give your Prince and Princess the transformation of a lifetime. Make your reservations by visiting Bibbidi Bobbidi Boutique, Deck 5, Midship or dialing extension 7-9438. Limited space available.

SHUTTERS PHOTO GALLERY



DECK 4, MIDSHIP

FAMILY PORTRAITS

Photos are taken in the lobby atrium to capture all your vacation memories. Make use of these opportunities to take a beautiful family photo by our Professional photographers and remember your cruise forever.

PHOTO BOOK

Turn your magical vacation memories into an impressive keepsake, a personal one of a kind Photo Book. Fill every page with memories of your cruise vacation. Orders close at 9:00 pm on the last day of the cruise.

PRIVATE STUDIO PORTRAITURE

Book our exclusive and contemporary Private Studio experience today and capture these memories. No obligation to purchase.

PHOTOS ARE AVAILABLE FOR VIEWING ON OUR INTERACTIVE PHOTO KIOSKS APPROXIMATELY FIVE HOURS AFTER BEING TAKEN AND ARE ONLY AVAILABLE FOR PURCHASE DURING THIS CRUISE.

IMPORTANT INFORMATION

Security Notice/Unaccompanied Minor Ashore
All Guests (including children) who wish to disembark or embark the ship are required to present their Key to the World card at the gangway. A photo ID is also required for those Guests who are 18 years of age or older. Guests under the age of 18 are required to have a Parent, Guardian or other responsible adult complete the "Traveling with Minors" section of "My Online Check-In" prior to sailing or sign an authorization form at the Guest Services Desk if they wish to go ashore unaccompanied or with any adult from another stateroom.

Insect Repellent Advisory
The Centers for Disease Control and Prevention recommends wearing long-sleeved shirts and pants along with insect repellent to protect against mosquito bites and related illnesses when going ashore. Complimentary insect repellent is available on the pier as you exit the ship. Insect repellent is also available for purchase in Sea Treasures. When using both sunscreen and insect repellent, use sunscreen first and apply insect repellent on top of sunscreen.

Corridor Quiet Hours
As a courtesy to all our Guests, please recognize quiet hallway hours from 10:00 pm til 8:00 am.

No Reserved Seats Policy
As a courtesy to all our Guests, we kindly advise that the saving of seats is not permitted in the Walt Disney Theatre, and the saving of the sun loungers is not permitted on Deck 11, 12, and 13. Items left unattended will be returned to lost and found at Guest Services, Deck 3 Midship.

Cold and Flu Reminder
Please wash hands frequently and thoroughly, particularly before meals. Contact the Health Center by dialing 7-1927, should anyone in your party become ill.

Inclement Weather
For the safety of all Guests, outdoor events may be changed due to unforeseen weather conditions.

Smoking
For the comfort of our Guests, the following areas are designated as smoking areas:
*Deck 13, forward, port side by Currents
*Deck 12, aft, port side outdoor area that is accessible through the Meridian Lounge
*Deck 4, aft, port side from 6:00 pm to 6:00 am only (all of Deck 4 is non-smoking from 6:00 am to 6:00 pm)
Smoking is prohibited inside all Guest staterooms and on stateroom verandahs. Guests found smoking in their staterooms or on their verandahs will be charged a \$250 stateroom recovery fee. Electronic cigarettes may only be used in designated smoking areas.

Walt Disney Theatre
Theatrical performances may use artificial fog, strobe lights, pyrotechnics and other special effects. For the safety of our performers and the comfort of those around you, the use of any photography, video recording device or any electronic equipment is prohibited.
Verandah Safety
Please do not leave any personal items on your verandah that may be blown overboard or present a fire hazard if left unattended. Do not throw anything over the ship's side. Guests should not sit, lean or climb on the railing or leave children unattended on the verandah. Do not open the verandah and stateroom doors simultaneously as this may create a wind effect and could cause the doors to slam unexpectedly.

WELCOME ABOARD!



Key to the World Card Information






In case of an emergency, your lettered Assembly Station is indicated here.

- ♥ Dinner seatings are 5:45 pm or 8:15 pm.
- ♥ Your table number for the cruise is located after your dinner seating.
- ♥ Dinner locations and rotation are indicated by letters under your dinner time.
A - Animator's Palate, Deck 3, Aft
E - Enchanted Garden, Deck 2, Midship
R - Royal Court, Deck 3, Midship


SAILING AWAY

It's time to go Sailing Away! Join Mickey and Minnie along with Tinker Bell and the rest of the gang as they welcome you aboard the Disney Fantasy.

Deck Stage, Deck 11, Midship, 4:30 pm

Afternoon	1:45	2:00	2:15	2:30	2:45	3:00	3:15	3:30	3:45	4:00	4:15	4:30	4:45	5:00	5:15	5:30	5:45	6:00	6:15	6:30	6:45			
FUNNEL VISION	Poolside Jams with Cruise Staff DJ Deck 11 Stage							<div>Mandatory Guest Assembly Drill 4:00 pm (All Guests must attend)</div> <div>All ship services will be suspended during this time.</div> <div>Please refer to the posted drill instructions on the back of your stateroom door prior to heading to your Assembly Station.</div> <div>You will not need your life jacket for the Guest Assembly Drill.</div> <div></div> <div>↑ Your Assembly Station is indicated on your Key To The World card.</div>					Sailing Away Deck 11 Stage		Monsters, Inc. (G) Open Captioning Funnel Vision									
BUENA VISTA THEATRE													Solo: A Star Wars Story (PG-13) Duration: 2 Hours 15 Minutes											
CHARACTERS													 Deck Stage		Minnie Lobby Atrium (V)		Mickey Mouse Balcony		Pluto Preludes		The Ventriloquism & Comedy of TAYLOR MASON Walt Disney Theatre			
	Walking Ship Tour Preludes												Greatest Hits with Soul Duo Lobby Atrium											
FUN FOR ALL AGES	Dely the Dark Dimension Disney's Oceaneer Club Preludes		Walking Ship Tour Preludes		BB-8 Recruitment Disney's Oceaneer Club								Family Crafts D Lounge											
ADULTS	Facial Consultations Senses Spa & Salon													Smooth Sounds with Rodrigo Figueroa Quiet Cove Pool										
	Spa Open House Senses Spa & Salon													Complimentary Footprint Analysis Senses Fitness Center										
VIBE 14-17 YEARS OLD	Youth Activities Open House & Registration																							
EDGE 11-14 YEARS OLD	Youth Activities Open House & Registration																							
OCEANEER LAB 3-12 YEARS OLD	Open House	Magic Playfloor	Venue Tour	Open House																				
OCEANEER CLUB 3-12 YEARS OLD	Dely the Dark Dimension	Open House	Venue Tour	BB-8 Recruitment	Open House																			

Disney Fantasy

Evening	7:00	7:15	7:30	7:45	8:00	8:15	8:30	8:45	9:00	9:15	9:30	9:45	10:00	10:15	10:30	10:45	11:00	11:15	11:30	11:45	12:00
FUNNEL VISION	Hercules (G) Open Captioning Funnel Vision						WALL-E (G) Funnel Vision						Captain America: Civil War (PG-13) Funnel Vision								
BUENA VISTA THEATRE	Solo: A Star Wars Story (PG-13) Open Captioning Duration: 2 Hours 15 Minutes						Coco (PG) Duration: 1 Hour 49 Minutes														
CHARACTERS	Mickey Mouse Balcony		Tiana Lobby Atrium (V)		Minnie Mouse Balcony		Donald Lobby Atrium (V)														
	Goofy Preludes	Belle Lobby Atrium (V)	Pluto Preludes			Chip & Dale Preludes	Ariel Lobby Atrium (V)	Daisy Preludes													
FUN FOR ALL AGES			The Pumpkin Tree Lobby Atrium		Disney Trivia D Lounge		The Ventriloquism & Comedy of TAYLOR MASON Walt Disney Theatre				Disney Tunes Trivia D Lounge		 Family KARAOKE D Lounge								
							Family Crafts D Lounge				Smooth Sounds with Soul Duo Lobby Atrium										
ADULTS			Spanish Guitar with Rodrigo Figueroa Currents				Violin Serenades with Ievgenia Ooh La La		Smooth Sounds with O&A Duo La Piazza		 The Physical Comedy of MICHAEL HOLLY The Tube		Smooth Sounds with O&A Duo La Piazza		Going Underground with Club DJ Akshen La Piazza						
			NCAA Football O'Gills Pub (Subject to Satellite Availability)								Snippets The Tube										
VIBE 14-17 YEARS OLD	Open House		Open for Teens		Foosball Tournament		Ninja		GAGA Ball		Ice Breakers		The Download		Heroes and Villains						
EDGE 11-14 YEARS OLD	Foosball Tournament		Profiles		Ice Breakers		Game Challenge		Meet Your Counselors		Ice Breakers		Taking it to The Edge		Heroes and Villains		GAGA Ball				
OCEANEER LAB 3-12 YEARS OLD	Ice Breakers		Super Sloppy Science			Game Challenge			Human Bingo			Detective School					Scavenger Hunt				
OCEANEER CLUB 3-12 YEARS OLD			McStuffin's Toy Hospital			Magic PlayFloor					Dress Up Fun		Once Upon a Time		Parachute Games		Wacky Relays				

Paradise Punch (Alcoholic)
Espresso Chiller (Non-Alcoholic)

DRINK OF THE DAY

FOLD —→
Fold along the dotted lines and take me with you so you don't miss any of the fun!

FOLD —→

YOUTH ACTIVITIES OPEN HOUSE
A non-secured program with activities for families, adults and children to enjoy together.

The
Comedy and
Ventriloquism of
Taylor Mason

WALT DISNEY THEATRE

Deck 3, Forward
6:15 pm & 8:30 pm

As a courtesy to all Guests, we kindly advise that the saving of seats is **not** permitted in the Walt Disney Theatre.

Assistance available at the entrance to the Walt Disney Theatre 30 minutes prior to show time.

Character Meet & Greet Ticket Distribution

Port Adventures Desk, Deck 5, Midship 11:45 am - 2:45 pm

For Guests who did not reserve Meet and Greets online, a limited number of tickets are available today to meet some of your favorite Disney friends.

- Princess Gathering
- Frozen Meet and Greet
- Disney Junior Character Breakfast

Tickets are required for this meet and greet. Space is limited.

Character Appearances**SAILING AWAY**

Deck 11 Stage - 4:30 pm

PRINCESS TIANA

Lobby Atrium (V) - 8:00 pm

MICKEY MOUSE

Balcony
5:15 pm & 7:15 pm

CHIP & DALE

Preludes - 9:30 pm

MINNIE MOUSE

Lobby Atrium (V) - 5:30 pm
Balcony - 9:30 pm

ARIEL

Lobby Atrium (V) - 9:45 pm

DAISY DUCK

Preludes - 10:00 pm

PLUTO

Preludes
5:45 pm & 7:45 pm

DONALD DUCK

Lobby Atrium (V) - 10:15 pm

GOOXY

Preludes - 7:15 pm

BELLE

Lobby Atrium (V) - 7:30 pm

(H) Hallway - (S) Starboard Side - (P) Port Side - (V) Vestibule

For details of daily Disney character appearances, refer to the character line on your Navigator Grid, or the digital character board in the Lobby Atrium.

Lines close 15 minutes after given times.

SHIP DIRECTORY**YOUTH ACTIVITIES**

DISNEY'S OCEANEER CLUB	DECK 5, MID	12:00 PM - 3:30 PM 4:30 PM - 12:00 AM
DISNEY'S OCEANEER LAB	DECK 5, MID	12:00 PM - 3:30 PM 4:30 PM - 12:00 AM
EDGE	DECK 13, MID	12:00 PM - 3:30 PM 4:30 PM - 12:00 AM
IT'S A SMALL WORLD NURSERY	DECK 5, MID	12:00 PM - 3:30 PM 4:30 PM - 11:00 PM
VIBE	DECK 4, FWD	12:00 PM - 3:30 PM 4:30 PM - 12:00 AM

POOLS & MORE

* Children under 12 must have adult supervision in pool areas.

AQUADUCK	DECK 12, MID	12:00 PM - 3:00 PM 4:30 PM - 10:00 PM
AQUALAB	DECK 12, AFT	12:00 PM - 3:15 PM 4:30 PM - 6:00 PM
DONALD'S POOL	DECK 11, MID	11:30 AM - 3:15 PM 6:00 PM - 10:00 PM
MICKEY'S POOL	DECK 11, MID	11:30 AM - 3:15 PM 4:30 PM - 10:00 PM
MICKEY'S SLIDE	DECK 11, MID	12:00 PM - 3:15 PM 4:30 PM - 6:00 PM
NEMO'S REEF	DECK 11, MID	12:00 PM - 3:15 PM 4:30 PM - 6:00 PM
QUIET COVE POOL (18+)	DECK 11, FWD	12:00 PM - 11:00 PM
SATELLITE FALLS (18+)	DECK 13, FWD	12:00 PM - 8:00 PM

Please note, "selfie sticks" are not permitted in any aquatic area.

Complimentary pool vests are available for children to use in the pools onboard. They are located on the pool deck.

RECREATION

GOLF/SPORTS SIMULATORS	DECK 13, AFT	12:00 PM - 3:15 PM 4:30 PM - 6:00 PM
GOOXY'S SPORTS DECK	DECK 13, AFT	12:00 PM - 6:00 PM
MIDSHIP DETECTIVE AGENCY	DECKS 2 & 5, MID	11:30 AM - 10:00 PM
PORT ADVENTURES DESK	DECK 5, MID	12:00 PM - 3:30 PM 4:30 PM - 8:30 PM
SENSES FITNESS CENTER (18+)	DECK 11, FWD	11:30 AM - 10:00 PM

GENERAL INFORMATION

CONNECT@SEA	DECK 4, MID	1:00 PM - 3:30 PM 7:00 PM - 10:00 PM
DISNEY VACATION CLUB	DECK 4, MID	5:00 PM - 10:00 PM
DISNEY VACATION PLANNING	DECK 4, MID	7:30 PM - 8:30 PM
GUEST SERVICES	DECK 3, MID	24 HOURS
HAIR BRAIDING	DECK 11, MID	1:30 PM - 6:00 PM
MEDICAL HEALTH CENTER	DECK 1, FWD	4:30 PM - 7:00 PM
PORT SHOPPING DESK	DECK 4, MID	7:30 PM - 8:30 PM
PRELUDES	DECK 3, FWD	SHOWTIMES
SENSES SPA AND SALON	DECK 11, FWD	11:30 AM - 10:00 PM
SHUTTERS PHOTO GALLERY	DECK 4, MID	7:00 PM - 10:30 PM

SHOPPING

BIBBIDI BOBBIDI BOUTIQUE	DECK 5, MID	12:00 PM - 3:00 PM 5:00 PM - 9:00 PM
MICKEY'S MAINSAIL	DECK 3, FWD	5:45 PM - 11:00 PM
SEA TREASURES	DECK 3, FWD	5:45 PM - 11:00 PM
TIFFANY & CO.	DECK 4, MID	5:45 PM - 11:00 PM
VISTA GALLERY	DECK 2, MID	
WHITE CAPS	DECK 3, FWD	5:45 PM - 11:00 PM
WHIZITS & WHATZITS	DECK 11, MID	12:00 PM - 3:15 PM 4:45 PM - 6:00 PM

DUE TO PORT REGULATIONS, WHEN THE SHIP IS DOCKED, THE STORES MUST REMAIN CLOSED.

EVENING ATTIRE | Cruise Casual

WEATHER FORECAST | Today: Partly Cloudy
High: 80°F/27°C

DINING & LOUNGES**LUNCH**

ANIMATOR'S PALATE	DECK 3, AFT	11:45 AM - 2:00 PM
CABANAS	DECK 11, AFT	12:00 PM - 3:15 PM
FILLMORE'S FAVORITES	DECK 11, MID	12:00 PM - 3:30 PM 4:15 PM - 6:30 PM
LUIGI'S PIZZA	DECK 11, MID	12:00 PM - 3:30 PM 4:15 PM - 6:30 PM
TOW MATER'S GRILL	DECK 11, MID	12:00 PM - 3:30 PM 4:15 PM - 10:00 PM

DINNER

ANIMATOR'S PALATE	DECK 3, AFT	5:45 PM & 8:15 PM
ENCHANTED GARDEN	DECK 2, MID	5:45 PM & 8:15 PM
PALO (18+) (RESERVATIONS REQ. & NOM. FEE APPLIES)	DECK 12, AFT	6:00 PM - 8:30 PM
REMY (18+) (RESERVATIONS REQ. & NOM. FEE APPLIES)	DECK 12, AFT	6:00 PM - 8:30 PM
ROYAL COURT	DECK 3, MID	5:45 PM & 8:15 PM

LATE NIGHT SNACKS

LA PIAZZA (18+)	DECK 4, AFT	10:45 PM - 11:30 PM
LUIGI'S PIZZA	DECK 11, MID	9:30 PM - 12:00 AM

ADDED FEATURES

BEVERAGE STATION	DECK 11, MID	24 HOURS
EYE SCREAM	DECK 11, MID	12:00 PM - 3:30 PM 4:15 PM - 11:00 PM
ROOM SERVICE	DIAL O	24 HOURS
SWEET ON YOU	DECK 11, AFT	11:30 AM - 3:30 PM 4:15 PM - 10:30 PM

ENTERTAINMENT - LOUNGES - BARS

Adults must be 21 and older to consume alcoholic beverages.

BON VOYAGE	DECK 3, MID	11:45 AM - 10:30 PM
COVE BAR (18+)	DECK 11, FWD	11:45 AM - 10:30 PM
COVE CAFE (18+)	DECK 11, FWD	11:45 AM - 12:00 AM
CURRENTS (18+)	DECK 13, FWD	11:45 AM - 11:00 PM
D LOUNGE	DECK 4, MID	SHOWTIMES
LA PIAZZA (18+ AFTER 9:00 PM)	DECK 4, AFT	11:45 AM - 2:00 AM
THE TUBE	DECK 4, AFT	6:00 PM - 12:00 AM
FROZONE TREATS	DECK 11, MID	11:45 AM - 6:00 PM
MERIDIAN (18+)	DECK 12, AFT	5:00 PM - 12:00 AM
OUTLOOK (18+)	DECK 14, MID	
OOL LA LA (18+)	DECK 4, AFT	5:00 PM - 12:00 AM
O'GILLS PUB (18+ AFTER 9:00 PM)	DECK 4, AFT	11:45 AM - 12:00 AM
SENSES JUICE BAR	DECK 11, FWD	11:45 AM - 8:00 PM
SKYLINE (18+)	DECK 4, AFT	5:00 PM - 12:00 AM
VISTA CAFE	DECK 4, MID	11:45 AM - 10:30 PM
WAVES	DECK 12, AFT	11:45 AM - 6:00 PM

Public Health Advisory: Consuming raw or under-cooked meats, poultry, seafood, shellfish, or eggs may increase your risk for food borne illness, especially if you have certain medical condition.

**MIDSHIP DETECTIVE AGENCY**

Use your detective know-how and our special detective "badge" to search the ship and catch your criminal! Deck 2 & 5, Midship Kiosks.

Visit the Port Adventures Desk,
Deck 5, Midship, for bookings & questions.

IMPORTANT NUMBERS

Fire/Security: 7-3001
Medical Emergency: 7-3000
Health Center: 7-1927