



VOYAGE NAVIGATOR

THURSDAY
AUGUST 9, 2018

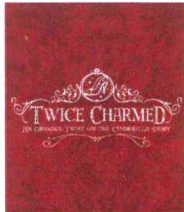
TO

THURSDAY
AUGUST 16, 2018

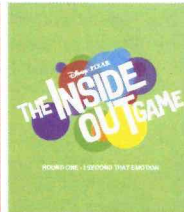
CRUISE HIGHLIGHTS

THURSDAY

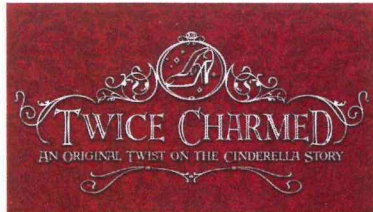
COPENHAGEN
Port Departure: 5:00 pm
All Aboard: 4:00 pm
Attire: Cruise Casual



TWICE CHARMED
Walt Disney Theatre
7:30 pm



THE INSIDE OUT GAME
D Lounge
6:45 pm & 8:45 pm



TWICE CHARMED
Walt Disney Theatre
6:30 pm & 8:45 pm



TANGLED: THE MUSICAL
Walt Disney Theatre
6:30 pm & 8:45 pm

FRIDAY

DAY AT SEA
Attire: Formal

SATURDAY

TALLINN
All Ashore: 10:30 am
All Aboard: 5:00 pm
Attire: Cruise Casual

SUNDAY

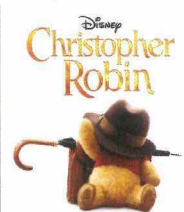
ST. PETERSBURG
All Ashore: 8:15 am
All Aboard: 11:30 pm
Attire: Cruise Casual



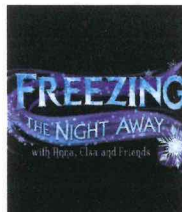
VARIETY: MICHAEL HARRISON
Walt Disney Theatre
7:30 pm



ANT-MAN AND THE WASP (PG-13)
Walt Disney Theatre
10:30 pm



CHRISTOPHER ROBIN (PG)
Walt Disney Theatre
5:45 pm & 8:30 pm



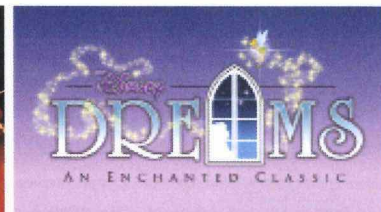
FREEZING THE NIGHT AWAY
Deck Stage
7:45 pm



DISNEY DREAMS: AN ENCHANTED CLASSIC
Walt Disney Theatre
7:30 pm



VARIETY: GRAFFITI CLASSICS
Fathoms
6:30 pm & 8:45 pm



DISNEY DREAMS: AN ENCHANTED CLASSIC
Walt Disney Theatre
6:30 pm & 8:45 pm

MONDAY

HELSINKI
All Ashore: 11:15 am
All Aboard: 5:30 pm
Attire: Cruise Casual

TUESDAY

STOCKHOLM
All Ashore: 9:00 am
All Aboard: 4:30 pm
Attire: Semi Formal

WEDNESDAY

DAY AT SEA
Attire: Cruise Casual

Subject to change.

WELCOME ABOARD!

YOUR STATEROOM & LUGGAGE

Staterooms will be ready at 1:30 pm. To allow your Stateroom Host/ess time to prepare your room, please do not remove the blue stanchion straps. Stateroom hosts will deliver luggage throughout the day until 5:30 pm.

STATEROOMS WITH BUNK BEDS

Bunk beds are recessed into the ceiling and will be prepared during evening turndown service by your Stateroom Host/ess.

STATEROOM SAFE

Each stateroom is equipped with a secured storage safe. Instructions for use are located on the safe.

TO CHANGE DINING ASSIGNMENT

Requests for different seating times will be taken today:

12:30 pm - 3:00 pm; Book in Promenade Lounge, Deck 3, Aft or please dial 7-1831 and leave a voicemail.

PALO DINING RESERVATIONS

Reservations are required and will be taken on a first come basis today:

12:30 pm - 3:00 pm in Promenade Lounge, Deck 3, Aft, or please dial 7-6843 and leave a voicemail.

Adult Exclusive Dining Opportunity! Guests are invited to make 2 dinner reservations at our adult-exclusive restaurant, Palo. This includes one reservation on embarkation evening and one more on another night of the cruise.

DINNER

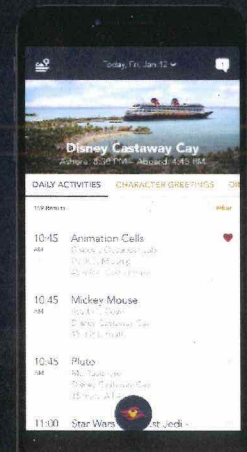
6:00 pm - First seating 8:30 pm - Second seating

Please check your Key To The World Card for details of your dining rotation, and bring it to your specific dining location. There is no need to wait in line prior to dinner. Dining Rooms open at designated seating times and your table is reserved each night of your cruise.

A = Animator's Palate, Deck 4, Aft L = Lumière's, Deck 3, Midship R = Rapunzel's Royal Table, Deck 3, Aft

DOWNLOAD THE NEW
DISNEY CRUISE LINE NAVIGATOR APP
BEFORE YOU SAIL AWAY

Available on iOS and Android



Create the most memorable experiences during your Disney Cruise Line vacation with Port Adventures! Our Port Adventures are designed for you to see the best our ports have to offer. Stop by the Port Adventures Desk, Deck 3, Midship where our friendly team will be happy to assist you plan your adventure!

There is an adventure for everyone on your Disney Magic® vacation.

IMPORTANT NUMBERS

Fire/Security: 7-3001

Medical Emergency: 7-3000

Health Center: 7-1927

ADULT ACTIVITY HIGHLIGHTS



1820 SOCIETY (GUESTS 18-20 YEARS ONLY)

1820 Society is an exclusive option for young adult Guests. Come meet fellow passengers and learn about the excellent activities that the Disney Magic offers to create the perfect cruise experience.



80'S FLASHBACK

The 80's are back! Join your Cruise Staff team, in testing your 80's knowledge in this high energy 80's revival.



KRAZY KARAOKE

Take to the stage, grab a microphone and sing your favorite tunes with your Club Host and DJ.



MATCH YOUR MATE

It's time to play everyone's favorite couples game show, Match Your Mate!



CANVAS AND COCKTAILS

Embrace your inner-artist and a cocktail as you learn to paint Disney style! Create a Disney Cruise Line exclusive painting suitable for framing. Proudly hang it & proudly say, "I did it myself!" NOTE - There is a nominal fee for this event. Pre-booking required.



Senses Spa & Salon has a variety of seminars and fitness classes available throughout the cruise. Pamper yourself with therapeutic spa treatments of heat, steam, rain and water in luxurious and tranquil private rooms. Deck 9, Forward.

BEVERAGE SEMINARS

Your Beverage team has a host of tastings and seminars to entertain and educate you. Stop by Promenade Lounge, Deck 3, Aft, 12:00 - 3:00 pm or Guest Services, Deck 3, Midship after today to pre-book these experiences (nominal fee applies).

- Stem to Stern Wine Tasting -
- Cognac Tasting - Whisky Tasting -
- Tequila & Margarita Tasting -

FEATURED VARIETY ACTS THIS VOYAGE



THE MAGIC & ILLUSION OF HECTOR IS MAGIC!

Hector is a young and charismatic illusionist from Spain. His jaw-dropping illusions and stories will transport you to a world where anything is possible. He has been traveling the world with his show for the last 10 years including cruise ships, theme parks, theaters and TV. Get ready to be amazed!



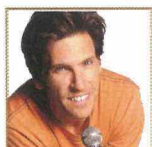
THE VENTRILOQUISM & COMEDY OF MICHAEL HARRISON

Michael Harrison is an extraordinarily talented ventriloquist, puppeteer and comedian. He has worked alongside numerous acts from The Muppets to Boyz 2 Men. Michael wrote and starred in the award winning television show, "Kids in the Firehall," which was awarded the prestigious Bronze Apple Award. Recently, he took his talents to a new level and appeared on "America's Got Talent" & finished as one of the finalists.



THE MUSICAL COMEDY OF GRAFFITI CLASSICS

Graffiti Classics was founded in 1997 by Cathal O'Duill. Whilst street-performing in Covent Garden (London) he realised that classical music could be made fun for any audience through interaction and comedy. Developing a unique antidote to the preconceptions of classical music as stuffy and elitist, Graffiti Classics succeed in bringing it to anyone and everyone whatever their age.



THE COMEDY OF DON FRIESEN

If you missed Don's hilarious Showtime/Netflix one-hour Special, "Ask Your Mom," you've got to catch him Live! Engaging, clever, and just flat-out funny, Don captures the irony of parenting, marriage and everyday absurdities through characters, voices, parodies and some of the best written routines around. He's a modern suburban dad trying to get through the day with a bit of money in the bank and a scrap of dignity intact.

FUN FOR ALL AGES HIGHLIGHTS



ADVENTURES AWAY

Earn your status as V.I.P. sailors as your Cruise Director, your Disney Pals, and the Cruise Staff officially begin your "Adventures Away".



A PIRATES LIFE FOR ME

Calling all Pirates, we be! If ye have an adventurous spirit or pirate savvy, come spin the "Wheel of Destiny" for a treasure trove of fun be ripe for the taking in this action packed pirate game show.



DISNEY JUNIOR PIRATE & PRINCESS DANCE PARTY

Calling all Pirates and Princesses! Come join us for a family dance party featuring music and fun activities from Jake & the Neverland Pirates and Sofia the First. Whether you favor tiaras or treasure chests, there's something for you at our Disney Junior Pirate & Princess Dance Party!



DISNEY VACATION CLUB GROUP PREVIEW

Join us for our interactive group presentation to learn about taking magical vacations year after year! For more information, please see a Disney Vacation Club Cast Member on Deck 4, Midship, or call 7-2805 from your stateroom phone.



FAMILY SUPERSTAR KARAOKE

Join your Cruise Staff and sing along to your favorite song, fun for everyone.



JACK-JACK'S INCREDIBLE DIAPER DASH

Calling all baby cruisers! It's time to take to the mat to see who's the fastest crawler of the seven seas! Register your baby 15 minutes prior to the big race.



JACKPOT BINGO

CASH prizes and raffle prizes to be won in our family friendly Bingo sessions with your Cruise Staff. Those under the age of 18 must be accompanied by an adult to play.



FREEZING THE NIGHT AWAY WITH ANNA, ELSA AND FRIENDS!

It's a Big Summer Blowout! Come join some of your favorite Frozen friends and Arendelle's royal party planners on Deck 9 for the best deck celebration on this side of the fjord! (Weather Permitting)



SALUDOS AMIGOS FIESTA

Come see what Donald and his friends are up to this time. Bring the family out to this interactive dance party featuring fun Latin music! Your family will learn to salsa, merengue and just have a Latin good time!



SO YOU THINK YOU KNOW YOUR FAMILY?

This fun-filled family game show is always full of surprises. Find out how well you know, or don't know your family!



THE INSIDE OUT GAME

Make new memories using the memories you already have. Embrace joy and play against anger, fear & disgust in this one-of-a-kind game show based on the Pixar movie Inside Out!



WAKE UP WITH DISNEY JUNIOR

What happens when you experience unlimited fun with your favorite Disney Junior shows? You get an exciting dance party designed especially for preschoolers ages seven and under.



WHO WANTS TO BE A MOUSEKETEER?

Your chance to get into the "hot seat" and win limited edition prizes. Or, play along as part of our live studio audience.

Please check your daily Personal Navigator for all times and locations.

YOUTH ACTIVITIES INFO & HIGHLIGHTS



Dine & Play

As a convenience for families dining at 8:15 pm, our Youth Activities Counselors will be available at 9:30 pm at the entrance of Lumiere's and at 9:45 pm at the entrance of Animator's Palate and Rapunzel's Royal Table to bring registered children to join the fun in Disney's Oceaneer Club and Disney's Oceaneer Lab.

Youth Activities Open House

Open House is an opportunity for all to come and participate in a variety of exciting activities and free time in the Oceaneer Club, Oceaneer Lab, Edge and Vibe throughout the cruise. During these times secured programming will still be offered in the other venue for those looking to check their children into care.

Youth Activities Venue Tour

Come and take a tour of Disney's Oceaneer Club and Disney's Oceaneer Lab. This informative tour will give you the information you need to know about our exciting spaces and activities offered for children ages 3-12. Please see your Personal Navigator or the Navigator App for times.



3 - 12 years old

STITCH'S GREAT ADVENTURE

Stitch needs your help in trying to capture ten of his lost cousins before they cause all kinds of problems on the ship!

MICKEY'S PUZZLE PLAYTIME

Come and play with Mickey & friends as they share their favorite games, puzzles and dances!

DISNEY ROYAL ACADEMY

Hear ye! Hear ye! All boys and girls are invited to become part of the Oceaneer Royal Court. Learn all about your favorite Disney Prince and Princesses, create your own royal garb and become one of the most powerful in the land. Disney Royal Academy is in session!



3 - 12 years old

SUPER SLOPPY SCIENCE

Join Professor Make-O-Mess in some of the most extreme experiments you will ever see in the world of Super Sloppy Science!

PLUTO'S PAJAMA PARTY

Bring the little ones in their pajamas but there will be anything but sleep when Pluto and friends host the ultimate slumber party!

PISTON CUP

It's Dinoco time and you're part of the pit crew! Design your own race car and see if you've got what it takes to end up in the winner's circle!



11 - 14 years old

HEROES VS. VILLAINS

Join your favorite hero or villain team on a series of activities that will take place throughout the cruise.

THAT'S HILARIOUS

Ever wanted to show off your comedy skills? Then be a part of the cast for the crazy improv show "That's Hilarious" and put on a live show for your friends.



14 - 17 years old

HAUNTED MANSION FAMILY PORTRAITS

Grim grinning ghosts come out to socialize as teens get transformed in a ghoulish photo shoot that is guaranteed to bring the spooks out for a swinging wake!

HOMECOMING

Come and join your fellow teens in our very own version of "Homecoming" and dance the night away.

BUENA VISTA THEATRE

Deck 5, Midship

FEATURE MOVIES THIS VOYAGE

THURSDAY - COPENHAGEN

5:30 pm	PG-13	Solo: A Star Wars Story	
8:15 pm	PG-13	Solo: A Star Wars Story	

FRIDAY - DAY AT SEA

9:00 am	PG	The Incredibles 2	
11:30 am	PG-13	Ant-Man and the Wasp	
2:30 pm	PG	Christopher Robin	
5:00 pm	PG-13	Avengers: Infinity War	
8:00 pm	PG-13	Avengers: Infinity War	
11:00 pm	PG	The Incredibles 2	

SATURDAY - TALLINN

9:00 am	PG	Family Movie Fun Time: Coco	
11:30 am	PG-13	Black Panther	
2:15 pm	PG-13	Avengers: Infinity War	
5:30 pm	PG-13	Ant-Man and the Wasp	
8:15 pm	PG-13	Ant-Man and the Wasp	
11:00 pm	PG-13	Black Panther	

SUNDAY - ST. PETERSBURG

9:00 am	PG	The Incredibles 2	
11:30 am	PG-13	Ant-Man and The Wasp	
2:15 pm	PG-13	Solo: A Star Wars Story	
5:30 pm	PG-13	Ant-Man and The Wasp	
8:15 pm	PG-13	Ant-Man and The Wasp	
11:00 pm	PG-13	Avengers: Infinity War	

MONDAY - HELSINKI

9:00 am	PG	Christopher Robin	
11:30 am	PG-13	Avengers: Infinity War	
2:45 pm	PG	The Incredibles 2	
5:30 pm	PG-13	Black Panther	
8:15 pm	PG-13	Black Panther	
10:30 pm	PG-13	Solo: A Star Wars Story	

TUESDAY - STOCKHOLM

9:00 am	PG-13	Ant-Man and the Wasp	
11:30 am	PG-13	Black Panther	
2:15 pm	PG-13	Solo: A Star Wars Story	
5:45 pm	PG	The Incredibles 2	
8:30 pm	PG	The Incredibles 2	
11:00 pm	PG	Christopher Robin	

WEDNESDAY - DAY AT SEA

9:00 am	PG	Christopher Robin	
11:15 am	PG-13	Ant-Man and The Wasp	
2:30 pm	PG	Christopher Robin	
5:30 pm	PG	Christopher Robin	
8:30 pm	PG	Christopher Robin	
11:00 pm	PG-13	Ant-Man and The Wasp	

Subject to change.



MORE TO ENJOY ONBOARD



BOOK ONBOARD AND SAVE!

Explore all the itineraries Disney Cruise Line offers - from the Caribbean and Bahamas to Alaska or Europe. Save when you book your next family adventure onboard! Visit the Disney Vacation Planning desk, Deck 4, Midship, for more information. Disney Vacation Planning tends to get busy on the last day of sailing. Don't miss the opportunity to plan your next Disney vacation.



DISNEY VACATION CLUB® MEMBER CELEBRATION

Join us as we welcome you onboard with a fun, interactive event where you can catch the latest updates at Disney Vacation Club! Please see a Disney Vacation Club Cast Member on Deck 4, Midship or call 7-2805 from your stateroom phone for more information.



PORT SHOPPING INFORMATION

You do not want to miss out on the unbelievable shopping this cruise! Tune into channel 26-6 for Port Shopping information.

Connect@Sea

CONNECT@SEA

We are now offering a NEW and improved Internet service to stay connected on your cruise like no other in the industry! Internet packages range from \$0.25 per MB - \$89.00 (1000 MB package). For more information contact your Connect@Sea Expert or Guest Services onboard. Possible service interruptions due to area configuration.

RELIGIOUS SERVICES

Groups who need a location to practice their faith may contact Guest Services for availability information.

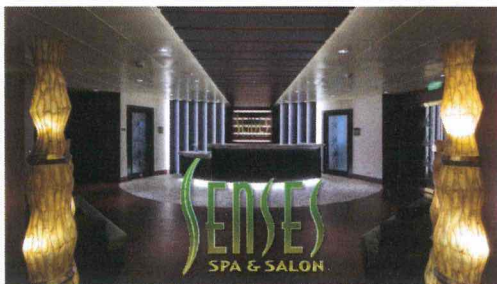
CURRENCY EXCHANGE

Euros will be available for exchange at Guest Services, Deck 3, Midship, 24 hrs a day. Not all currencies will be exchanged onboard, so please check with Guest Services for further information.

TRANSPORTATION INFORMATION

Should you wish to purchase transportation to the Copenhagen airport, kindly proceed to Guest Services on Deck 3, Midship for further assistance.

SENSES SPA & SALON



DECK 9, FORWARD
Extension 7-1465

RAINFOREST

Come enjoy our serenity lounge, with heated chairs, dry sauna, aromatherapy steam rooms and rainfall, misting showers.

Couples Cruise Pass - \$193 ~ Single Cruise Pass - \$144

IONITHERMIE

Lose between 1 - 8 inches? Speed up your metabolism. Firm muscle tone. Improve appearance of cellulite. \$155/1 session or \$598/5 sessions.

ONBOARD ACUPUNCTURE

Naturally effective for pain, arthritis, sea sickness, stress, digestion, weight loss, and much more.

\$150/session or \$550/5 sessions.

ELEMIS BIOTEC

8 different Facial treatments available based on your specific concerns or needs. Technology turbo charges the concept of touch. The clinically proven result is visibly healthy, nourished and energized skin.

REJUVENATION SPA CONSULTATIONS

Ready to enhance your natural beauty? Book your free Facial Rejuvenation consultation with our Rejuvenation Doctor at the Senses Spa.

MERCHANDISE SHOPPING



DECK 4, FORWARD

THE CROWN JEWELRY

Visit The Crown Jewelry, located on Deck 4, Midship, to discover stylish timepieces and fine jewelry. Discover the Crown of Light Diamonds, Safi Kilime Tanzinites and John Hardy's handcrafted jewelry, as well as luxury watches by Hublot and Breitling.

KIROV ARTS TRUNK SHOW

Visit Sea Treasures on Deck 3, Forward for a special collection of Russian jewelry, souvenirs, gifts, and works of traditional folk art.

HELPFUL SHOPPING TIP

While shopping onboard, you may collect your items from both stores before proceeding to checkout at any register. No need to have to wait in line in each store to pay for your items separately! Mickey's Mainsail and White Caps, Deck 4, Forward.

BIBBIDI BOBBIDI BOUTIQUE

A makeover fit for a princess! Fairy Godmothers-in-Training are ready with magic and pixie dust to give your Prince and Princess the transformation of a lifetime. Make your reservations by visiting Bibbidi Bobbidi Boutique, Deck 10, Forward, Port Side, or dialing extension 7-1492. Limited space available.

SHUTTERS PHOTO GALLERY



DECK 4, AFT

WELCOME ABOARD RAFFLE

Your embarkation photos will be available for viewing at 6:30pm. Visit Shutters on Deck 4 Aft and drop your raffle coupon for a chance to win a 10 Digital Photo package with a \$149.95 value.

OUR CRUISE PHOTOS DIGITAL!

Ask a friendly photographer about our Cruise digital Photos! And the incredible value of an All Inclusive digital photo package, which includes all of your stateroom's photos. Visit Shutters today as supplies are limited. *Terms and conditions apply.

PRIVATE STUDIO PORTRAITURE

Book our exclusive and contemporary Private Studio experience today and capture these memories. No obligation to purchase. Black and White only.

PHOTO BOOK

Turn your magical vacation memories into an impressive keepsake, a personal one of a kind Photo Book. Fill every page with memories of your cruise vacation. Orders close at 10:00 pm on the last day of the cruise.

PHOTOS ARE AVAILABLE FOR VIEWING ON OUR INTERACTIVE PHOTO KIOSKS APPROXIMATELY FIVE HOURS AFTER BEING TAKEN AND ARE ONLY AVAILABLE FOR PURCHASE DURING THIS CRUISE.

AN 18% AUTO GRATUITY IS ADDED TO ALL SENSES SPA SERVICES.

DUE TO PORT REGULATIONS, WHEN THE SHIP IS DOCKED, THE STORES WILL REMAIN CLOSED.

IMPORTANT INFORMATION

Security Notice/Unaccompanied Minor Ashore
All Guests (including children) who wish to disembark or embark the ship are required to present their Key to the World card at the gangway. A photo ID is also required for those Guests who are 18 years of age or older. Guests under the age of 18 are required to have a Parent, Guardian or other responsible adult complete the "Traveling with Minors" section of "My Online Check-In" prior to sailing or sign an authorization form at the Guest Services Desk if they wish to go ashore unaccompanied or with any adult from another stateroom.

Insect Repellent Advisory
The Centers for Disease Control and Prevention recommends wearing long-sleeved shirts and pants along with insect repellent to protect against mosquito bites and related illnesses when going ashore. Complimentary insect repellent is available on the pier as you exit the ship. Insect repellent is also available for purchase in White Caps. When using both sunscreen and insect repellent, use sunscreen first and apply insect repellent on top of sunscreen.

Corridor Quiet Hours
As a courtesy to all our Guests, please recognize quiet hallway hours from 10:00 pm til 8:00 am.

No Reserved Seats Policy
As a courtesy to all our Guests, we kindly advise that the saving of seats is not permitted in the Walt Disney Theatre, and the saving of the sun loungers is not permitted on Deck 9 and 10. Items left unattended will be returned to lost and found at Guest Services, Deck 3 Midship.

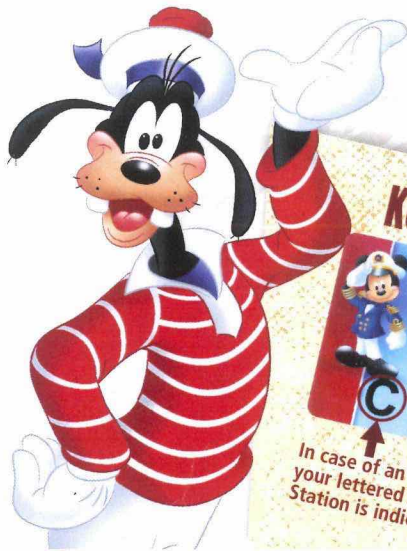
Cold and Flu Reminder
Please wash hands frequently and thoroughly, particularly before meals. Contact the Health Center by dialing 7-1927, should anyone in your party become ill.

Inclement Weather
For the safety of all Guests, outdoor events may be changed due to unforeseen weather conditions.

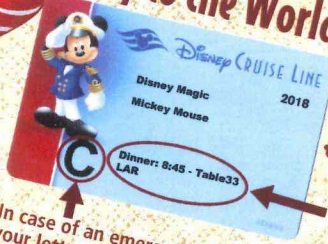
Smoking
For the comfort of our Guests, the following areas are designated as smoking areas:
*Deck 9, Forward, Port Side by *Deck 4, Starboard side from 6:00 pm to 6:00 am only (all of Deck 4 is non-smoking from 6:00 am to 6:00 pm)
Smoking is prohibited inside all Guest staterooms and on stateroom verandahs. Guests found smoking in their staterooms or on their verandahs will be charged a \$250 stateroom recovery fee. Electronic cigarettes may only be used in designated smoking areas.

Walt Disney Theatre
Theatrical performances may use artificial fog, strobe lights, pyrotechnics and other special effects. For the safety of our performers and the comfort of those around you, the use of any photography, video recording device or any electronic equipment is prohibited.
Verandah Safety
Please do not leave any personal items on your verandah that may be blown overboard or present a fire hazard if left unattended. Do not throw anything over the ship's side. Guests should not sit, lean or climb on the railing or leave children unattended on the verandah. Do not open the verandah and stateroom doors simultaneously as this may create a wind effect and could cause the doors to slam unexpectedly.

WELCOME ABOARD!



Key to the World Card Information



In case of an emergency, your lettered Assembly Station is indicated here.

- Your dining time and table number for the cruise are located here.
- Dining locations and rotation are indicated by letters under your dinner time.
 - L - Lumiere's, Deck 3, Midship
 - A - Animator's Palate, Deck 4, Aft
 - R - Rapunzel's Royal Table, Deck 3, Aft

ADVENTURES AWAY

Earn your status as V.I.P. sailors! Join your Cruise Director, Lesley, your Disney pals and your Cruise Staff as we officially begin your "Adventures Away."

**Deck Stage,
Deck 9, Midship,
4:45 pm**

DRINK OF THE DAY
Double Crown (Alcoholic)
Virgin Bloody Caesar (Non-Alcoholic)

Afternoon	2:00	2:15	2:30	2:45	3:00	3:15	3:30	3:45	4:00	4:15	4:30	4:45	5:00	5:15	5:30	5:45	6:00	6:15	6:30	6:45	7:00														
FUNNEL VISION	Poolside Jams with Cruise Staff DJ Deck 9 Stage							Mandatory Guest Assembly Drill 4:15 pm (All Guests must attend) All ship services will be suspended during this time. Refer to the posted drill instructions on the back of your stateroom door prior to heading to Deck 4. Please bring your Key to the World Card. You will not need your life jacket for the Guest Assembly Drill. Your Assembly Station is indicated on your Key To The World card.					Adventures Away Deck 9 Stage		Monsters, Inc. (G) Open Captioning Funnel Vision																				
BUENA VISTA THEATRE	Port Shopping Talk Buena Vista Theatre												Solo: A Star Wars Story (PG-13) Duration: 2 Hours 15 Minutes		Daisy Lobby Atrium (P)		Goofy DK4 Mid (S)	Pluto DK4 Mid (S)	Donald Lobby Atrium (P)																
CHARACTERS												Deck 9 Stage		Pop Songs with Firelites Promenade Lounge		D Lounge																			
FUN FOR ALL AGES	Walking Ship Tour Preludes	Walking Ship Tour Preludes	Walking Ship Tour Preludes											Going Places with Hudson River Band Lobby Atrium																					
ADULTS	Spa Open House Senses Spa & Salon				Spa Raffle Senses Spa & Salon							Footprint Analysis Senses Spa & Salon	Chillout with the Royal Duo Quiet Cove Pool																						
VIBE 14-17 YEARS OLD	Youth Activities Open House & Registration																																		
EDGE 11-14 YEARS OLD	Youth Activities Open House & Registration																																		
OCEANEER LAB 3-12 YEARS OLD	Open House & Registration										Youth Activities Tour																								
OCEANEER CLUB 3-12 YEARS OLD	Open House & Registration										Youth Activities Tour																								
	Profiles					Open for Teens					Tween You & I Super Spin					Open House					Open for Tweens														
	Open House					Game Challenge					Meet Your Counselors					Craft Corner					Doctor Strange Defy the Dark Dimension					Open House					Pre-School Fun (3-5 Years Old)				

Fold along the dotted lines and take me with you so you don't miss any of the fun!



Evening	7:15	7:30	7:45	8:00	8:15	8:30	8:45	9:00	9:15	9:30	9:45	10:00	10:15	10:30	10:45	11:00	11:15	11:30	11:45	12:00	12:15			
FUNNEL VISION						Up (PG) Funnel Vision						Ant-Man (PG-13) Funnel Vision												
BUENA VISTA THEATRE	Solo: A Star Wars Story (PG-13) Duration: 2 Hours 15 Minutes																							
CHARACTERS		Minnie Lobby Atrium (P)		Mickey Lobby Atrium (P)							Minnie DK4 Mid (S)			Ariel Lobby Atrium (P)										
		Pluto DK4 Mid (S)		Goofy DK4 Mid (S)								Cinderella Lobby Atrium (P)	Mickey DK4 Mid (S)											
FUN FOR ALL AGES	Walt Disney Theatre			D Lounge			Animation: PIXAR D Lounge			D Lounge			D Lounge											
																Pixar Trivia D Lounge	Live Lounge with Firelites Promenade Lounge		Acoustic Looping with Firelites Promenade Lounge					
ADULTS	Disney Vacation Club: Members Celebration Fathoms			Music and Martinis with Bernadett Bahari Keys			Cruise Staff DJ Fathoms			1820 Society Signals			The Close Up Magic of HECTOR IS MAGIC! Fathoms			Disney Silent DJ Party Fathoms			Late Night Keys					
VIBE 14-17 YEARS OLD	Cards Tournament				Video Game Challenge				Teen Choice				Ice Breakers				Meet Your Counselors				Heroes and Villains			
EDGE 11-14 YEARS OLD	Wii Challenge		Craft Corner		4 Square Competition				Ice Breakers				Meet Your Counselors		Profiles		Heroes and Villains							
OCEANEER LAB 3-12 YEARS OLD	Explore the Lab!		Super Sloppy Science		GAGA Ball				Relay Games				Mad Hatter's Unbirthday Party				Wii Challenge							
OCEANEER CLUB 3-12 YEARS OLD	Meet Your Counselors		Memory Wall		Toy Story Boot Camp				Go Fetch				4 Square Competition				Dance Party							

Fold

YOUTH ACTIVITIES OPEN HOUSE
A non-secured program with activities for families, adults and children to enjoy together.



TWICE CHARMED

AN ORIGINAL TWIST ON THE CINDERELLA STORY

WALT DISNEY THEATRE

Deck 4, Forward
7:30 pm

As a courtesy to all Guests, we kindly advise that the saving of seats is not permitted in the Walt Disney Theatre.

Assistance is available at the entrance to the Walt Disney Theatre 30 minutes prior to show time.

Character Meet & Greet Ticket Distribution

Port Adventures Desk, Deck 3, Midship - 12:00 pm - 2:00 pm
For Guests who did not reserve meet and greets online, a limited number of tickets are available today to meet some of your favorite Disney friends.

Princess Gathering ~ Frozen Gathering
Tickets are required for each of these meet and greets.
Space is limited.

Character Appearances

ADVENTURES AWAY

Deck 9 Stage - 4:45 pm

CINDERELLA

Lobby Atrium (P) - 10:00 pm

DAISY DUCK

Lobby Atrium (P) - 5:15 pm

ARIEL

Lobby Atrium (P) - 10:30 pm

GOOFY

DK4 Mid (S)
5:30 pm & 8:15 pm

DONALD DUCK

Lobby Atrium (P) - 5:45 pm

PLUTO

DK4 Mid (S)
6:00 pm & 7:45 pm

MINNIE MOUSE

Lobby Atrium (P) - 7:45 pm
DK4 Mid (S) - 9:45 pm

MICKEY MOUSE

Lobby Atrium (P) - 8:15 pm
DK4 Mid (S) - 10:15 pm

(S) Starboard Side - (P) Port Side

For detailed character appearances, refer to the character line on your Navigator, the Disney Cruise Line App, or the digital character board in the Lobby Atrium.
Lines close 15 minutes after advertised start time.



SHIP DIRECTORY

YOUTH ACTIVITIES

DISNEY'S OCEANEER CLUB	DECK 5, MID	12:00 PM - 4:00 PM
		5:00 PM - 12:00 AM
DISNEY'S OCEANEER LAB	DECK 5, MID	12:00 PM - 4:00 PM
		5:00 PM - 12:00 AM
EDGE	DECK 9, MID	12:00 PM - 4:00 PM
		5:00 PM - 12:00 AM
IT'S A SMALL WORLD NURSERY	DECK 5, AFT	12:00 PM - 4:00 PM
		5:00 PM - 11:00 PM
VIBE	DECK 10, MID	12:00 PM - 4:00 PM
		5:00 PM - 12:00 AM

POOLS

*Children under 12 years of age must have adult supervision in all pools.

AQUADUNK	DECK 10, MID	12:00 PM - 3:00 PM
		6:00 PM - 8:00 PM
AQUALAB	DECK 9, AFT	12:00 PM - 3:30 PM
		4:30 PM - 8:00 PM
GOOFY'S POOL	DECK 9, MID	12:00 PM - 3:30 PM
		6:00 PM - 10:00 PM
NEPHEWS' SPLASH ZONE	DECK 9, AFT	12:00 PM - 3:30 PM
		4:30 PM - 6:00 PM
QUIET-COVE POOL (18+)	DECK 9, FWD	12:00 PM - 11:00 PM
TWIST 'N' SPOUT	DECK 9, AFT	12:00 PM - 3:00 PM
		4:30 PM - 8:00 PM

Please note, "selfie sticks" are not permitted in any aquatic areas.

Complimentary pool vests are available for children to use in the pools onboard.
They are located on the pool deck.

RECREATION

PORT ADVENTURES DESK	DECK 3, MID	12:00 PM - 3:30 PM
		4:30 PM - 6:00 PM
		7:15 PM - 9:00 PM
SENSES FITNESS CENTER (18+)	DECK 9, FWD	11:30 AM - 10:00 PM
WIDE WORLD OF SPORTS DECK	DECK 10, FWD	24 HOURS

GENERAL INFORMATION

BUENA VISTA THEATRE	DECK 5, AFT	SHOWTIMES
CONNECT@SEA DESK	DECK 3, AFT	1:00 PM - 4:00 PM
		7:00 PM - 10:00 PM
DISNEY VACATION CLUB DESK	DECK 4, MID	6:00 PM - 10:30 PM
DISNEY VACATION PLANNING	DECK 4, MID	7:00 PM - 8:15 PM
FUNNEL VISION	DECK 9, MID	SHOWTIMES
GUEST SERVICES	DECK 3, MID	24 HOURS
HAIR BRAIDING	DECK 9, MID	
MEDICAL HEALTH CENTER	DECK 1, FWD	4:30 PM - 7:00 PM
PORT SHOPPING DESK	DECK 3, MID	7:30 PM - 8:30 PM
PRELUDES	DECK 4, FWD	SHOWTIMES
SENSES SPA AND SALON	DECK 9, FWD	11:30 AM - 10:00 PM
SHUTTERS PHOTO GALLERY	DECK 4, AFT	6:00 PM - 10:30 PM
WALT DISNEY THEATRE	DECK 4, FWD	SHOWTIMES

SHOPPING

BIBBIDI BOBBIDI BOUTIQUE	DECK 3, MID	12:00 PM - 3:00 PM
	DECK 10, FWD	5:00 PM - 9:00 PM
MICKEY'S MAINSAIL	DECK 4, FWD	6:00 PM - 11:00 PM
SEA TREASURES	DECK 3, FWD	6:00 PM - 11:00 PM
THE CROWN JEWELRY	DECK 4, AFT	6:00 PM - 11:00 PM
VISTA GALLERY	DECK 4, MID	6:00 PM - 11:00 PM
WHITE CAPS	DECK 4, FWD	6:00 PM - 11:00 PM

DUE TO PORT REGULATIONS, WHEN THE SHIP IS DOCKED, THE STORES MUST REMAIN CLOSED.

TIME ZONE CHANGE

Remember to turn your clocks

FORWARD 1 HOUR upon retiring on THURSDAY evening, or first thing FRIDAY morning.



EVENING ATTIRE Cruise Casual

WEATHER Today: Partly Sunny
FORECAST High: 76°F/24°C

DINING & LOUNGES

LUNCH

CABANAS	DECK 9, AFT	11:45 AM - 3:15 PM
DAISY'S DE LITES	DECK 9, AFT	12:00 PM - 3:30 PM
		4:30 PM - 6:00 PM
DUCK-IN DINER	DECK 9, AFT	12:00 PM - 3:30 PM
		4:30 PM - 6:00 PM
LUMIÈRE'S	DECK 3, MID	11:45 AM - 1:45 PM
PINOCCHIO'S PIZZERIA	DECK 9, MID	12:00 PM - 3:30 PM
		4:30 PM - 6:00 PM

DINNER

ANIMATOR'S PALATE	DECK 4, AFT	6:00 PM & 8:30 PM
DAISY'S DE LITES	DECK 9, AFT	6:00 PM - 8:30 PM
LUMIÈRE'S	DECK 3, MID	6:00 PM & 8:30 PM
PALO (18+) (FOR RESERVATIONS CALL 7-8843)	DECK 10, AFT	6:00 PM - 8:30 PM
RAPUNZEL'S ROYAL TABLE	DECK 3, AFT	6:00 PM & 8:30 PM

LATE NIGHT SNACKS

O'GILLS PUB	DECK 3, FWD	10:45 PM - 11:45 PM
PINOCCHIO'S PIZZERIA	DECK 9, MID	9:30 PM - 12:00 AM
PROMENADE LOUNGE	DECK 3, AFT	10:45 PM - 11:45 PM

ADDED FEATURES

EYE SCREAM	DECK 9, AFT	12:00 PM - 3:30 PM
		4:15 PM - 11:00 PM
BEVERAGE STATION	DECK 9, AFT	24 HOURS
ROOM SERVICE	DIAL 7-4330	24 HOURS

ENTERTAINMENT - LOUNGES - BARS

Adults must be 21 and older to consume alcoholic beverages.

AFTER HOURS	DECK 3, FWD	(AFTER 9:00 PM, ADULTS ONLY)
COVE CAFE (18+)	DECK 9, MID	11:45 AM - 12:00 AM
D LOUNGE	DECK 4, MID	SHOWTIMES
FATHOMS (18+ AFTER 9:00 PM)	DECK 3, FWD	7:30 PM - 8:30 PM
		9:30 PM - 2:00 AM
FROZONE TREATS	DECK 9, AFT	11:45 AM - 6:00 PM
KEYS (18+)	DECK 3, FWD	6:00 PM - 12:30 AM
O'GILLS PUB (18+ AFTER 9:00 PM)	DECK 3, FWD	11:45 AM - 12:00 AM
PRELUDES	DECK 4, FWD	SHOWTIMES
PROMENADE LOUNGE	DECK 3, AFT	11:45 AM - 12:00 AM
PINOCCHIO'S PIZZERIA	DECK 9, MID	11:45 AM - 12:00 AM
SIGNALS (18+)	DECK 9, FWD	11:45 AM - 10:00 PM

Public Health Advisory: Consuming raw or undercooked meats, poultry, seafood, shellfish, or eggs may increase your risk for foodborne illness, especially if you have certain medical condition.



Explore and more with our carefully selected Port Adventures. Pass by the Port Adventures Desk, Deck 3, Midship to find out more.

IMPORTANT NUMBERS

Fire/Security: 7-3001
Medical EMERGENCY: 7-3000
Health Center: 7-1927